

Article

Development of UAV Tracking and Coordinate Detection Method Using a Dual-Axis Rotary Platform for an Anti-UAV System

Bor-Horng Sheu¹, Chih-Cheng Chiu², Wei-Ting Lu, Chu-I Huang¹ and Wen-Ping Chen^{1,3,*}

¹Department of Electrical Engineering, National Kaohsiung University of Sciences and Technology

²Engineering Science and Technology, College of Engineering, National Kaohsiung University of Sciences and Technology

³Ph.D Program in Biomedical Engineering, Kaohsiung Medical University

*Corresponding author: Wen-Ping Chen (wpc@nku.edu.tw)

Abstract: The rapid development of multicopters has led to many security problems. In order to prevent multicopters from invading restricted areas or famous buildings, an Anti-UAV Defense System (AUDS) has been developed and become a research topic of interest. Topics under research in relation to this include electromagnetic interference guns for unmanned aerial vehicles (UAVs), high-energy laser guns, US military net warheads, and AUDSs with net guns. However, these AUDSs use either manual aiming or expensive radar to trace drones. This research proposes a dual-axis mechanism with drone automatic tracing. The tracing platform uses visual image processing technology to trace and lock the dynamic displacement of a drone. When a target drone is locked, the system uses a multi-axis attitude meter and laser rangefinders to measure its flight altitude and calculates its longitude and latitude coordinates through sphere coordinates to provide drone monitoring for further defense or attack missions. Tracing tests of drone flights in the air were carried out using a DJI MAVIC UAV at a height of 30 meters to 100 meters. It was set up for drone image capture and visual identification for tracing under various weather conditions by a thermal imaging camera and a full-color camera respectively. When there was no cloud during the daytime, the images acquired by the thermal imaging camera and full-color camera provide a high-quality image identification result. However, under dark weather, black clouds will emit radiant energy and seriously affect the capture of images by a thermal imaging camera. When there is no cloud at night, the thermal imaging camera performs well in drone image capture. When the drone is traced and locked, the system can effectively obtain the flight altitude and longitude and latitude coordinate values.

Keywords: drones; dynamic coordinate tracing; computer vision; Anti-UAV Defense System

I. Introduction

Since Dà-Jiāng Innovations (DJI) released the new DJI XP3.1 (a flight control system) [1,2], its multi-rotor drone has been characterized by hovering, route-planning, its comparative low price and easy of use [3, 4]. These factors have led to the rapid development of drones in the consumer selfie drone market. At present, they have been adopted all over the world in environmental aerial photography or surveillance. However, under uncontrolled drone flight control, there have been many drone misfortunes, both at home and abroad. News events have included the impact on the navigation area, the impact on famous buildings, and the horror of political figures, and the biggest worry for drones is that people or terrorists may modify them to make them carry dangerous bombs, or use the vehicles themselves as extremely dangerous devices for attacking bombs. Drone hidden hazards are an urgent problem [5, 6], so countries have begun to impose strict regulations on drone flight management, and even implement no-fly rules. The Federal Aviation Administration (FAA), similar authorities of China and Taiwan have all drawn up drone system usage scenarios. Besides, for the sake of preventing and controlling indecent invasions by drones, research into many AUDSs

has progressively turned into an international research topic of interest [7, 9]. There are lots of similar approaches of AUDS, such as spoofing attacks, tracing and in time warning, detection, defeating, and signal interfering [10, 11]. The Scalable Effects Net Warhead invented by the US military launches warheads and throws nets to attack enemy drones, and other anti-UAV technologies developed by scientists. Among them, devices such as radar, satellites and thermal imaging cameras are used for in time warning and detection which detect the trace of a drone from the ground. Those technologies are to carry out an immediate detection, warning, and tracing of the intruding drone, and provide real time messages and information support [12, 15]. Destroying intruding drones is another kind of approach which acquires the location of drones first and then defeat them by using missiles, lasers or other weapons. An example of this type of approach is a defence system using strong energy laser developed by a Turkish company ASELSAN. Even if this method with the effect of destruction and threat, there is a chance of incident injury to adjacent matters while the drone is gotten down. Interfering with communications of an intruding drone by electromagnetic interference methods is effective; however, it also affects the surrounding communications. The shortcoming is clear thus the wireless communications around that area is affected. The quality of life will also be influenced. The Scalable Effects Net Warhead is a technique for quickly and accurately delivering a net to a remote target using a projectile. It includes a mesh-containing launcher, an ejection spring, and a releasable ogive. This net warhead can be launched from a suitable barrel using a propellant or compressed gas. The speed and rotation of the warhead will be determined by the diameter of the barrel. When the warhead approaches the target, the electronic control board activates the servo motor and then pulls the central locking plunger to release the ogive. Then the spring pushes the net to aim at and spread on the target resulting in its capture.

There are lots of reports of security issues caused by drone incidents. Lots of incidents reported that terrorists around the world use drones to attack the targets. Thus there are an increasing market and insistent need for AUDS which lead to the development of AUDS technologies. However, with limited resources, how to develop AUDS detection technologies for civil purposes is a very important research topic. This research proposes a two-axis rotary tracing mechanism which adopts a thermal imaging camera and a full-color camera. With an algorithm of image identification, this device traces and locks a drone. The device traces a drone while the drone is in the range of visual detection by tracing of dynamic coordinates. A multi-axis attitude meter and laser rangefinders in the proposed device are used to perform the sensing then calculate its flight altitude of the drone. The spherical coordinates are used to obtain the longitude and latitude data of the drone. Through continuous locking the dynamic coordinates of the drone, a ground control station arranges an attack drone to defeat the target drone by a net gun, laser gun or other weapons such as rifles. In this stage, a real-time transmitting the dynamic coordinate to an attack drone for fast chase is required. This paper proposes a different approach.

II. System Architecture

The research structure of this paper consists of three units: the two-axis mechanism, drone identification and tracing approach, and drone three-dimensional coordinate calculation method. A detailed description of each unit follows:

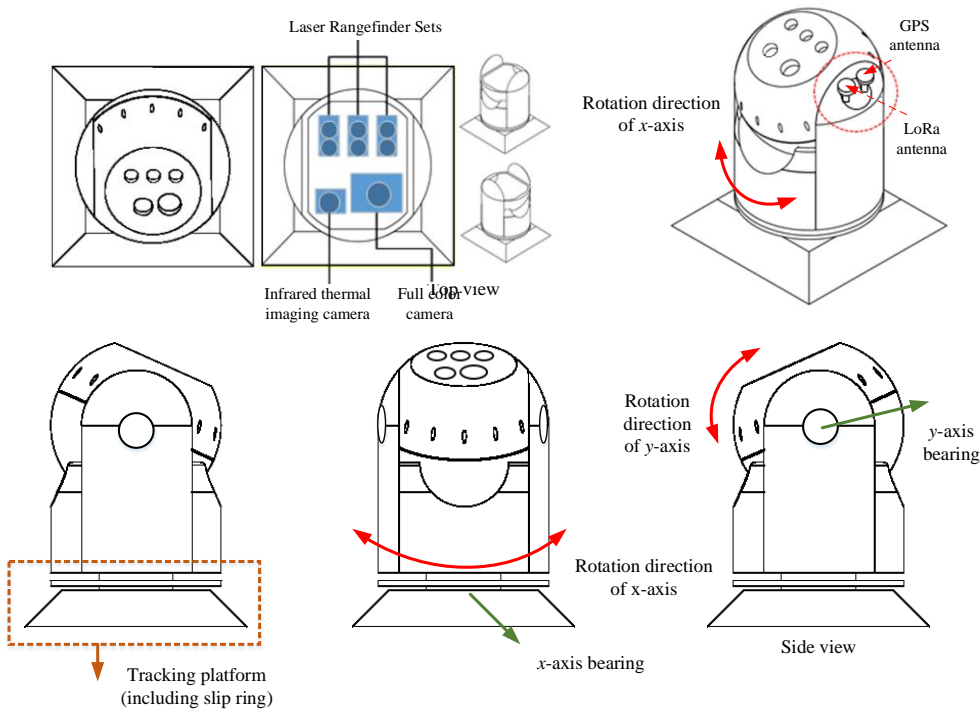


Figure 1. Design of the two-axis mechanism.

1. The Two-Axis Rotational Platform Mechanism

The design of externals for the proposed two-axis rotational device in this research is shown in Figure 1. There are two axes: the lateral axis is the x -axis and the longitudinal axis is the y -axis. With the rotation of the x -axis and y -axis, the movement of the image (the picture acquired by the thermal imaging or full-color camera) will be driven. The image provides flying drone detection with a viewing angle range of 360° for the x -axis and 180° for the y -axis of rotation. In order to improve the detection capability of the drone, there is a mechanism frame inside the two-axis mechanism which is equipped with a fine-tuning device (three sets of laser rangers), a multi-axis attitude meter, a thermal imaging camera, and a full-color camera for drone image capture and position detection. The fine-tuning mechanism is used to provide drone tracing, and the laser rangefinder is adopted for focusing precision adjustment. In the drone image focus and distance measurement, because the image acquisition lens and the laser rangefinder are not on the same line, the distance measuring of the drone for high-altitude flight needs the fine-tuning mechanism for the focus. First, the photographic lens is adopted as the focus point of the center of the image frame, then the three laser rangers are set close to the lens, before the fine-tuning mechanism is modified with the focus distance of the drone to be acquired by the tracing device, so that the hitting spot of the laser ranger on the drone overlaps with the spot of the center of the image. GPS and LoRa antennas are placed outside the tracing device due to the need to avoid metal disturbance and object signal-shelter from the thick casing of the tracing device.

2. Drone Visual Image Tracing Method

The drone image visual tracing process identifies a drone in motion using images acquired by a thermal imaging camera or full-color camera. These cameras inside a two-axis mechanism were adopted for image acquisition in this study. After image acquired, vision image processing is performed and then drone tracing is done through motor control of the above platform.

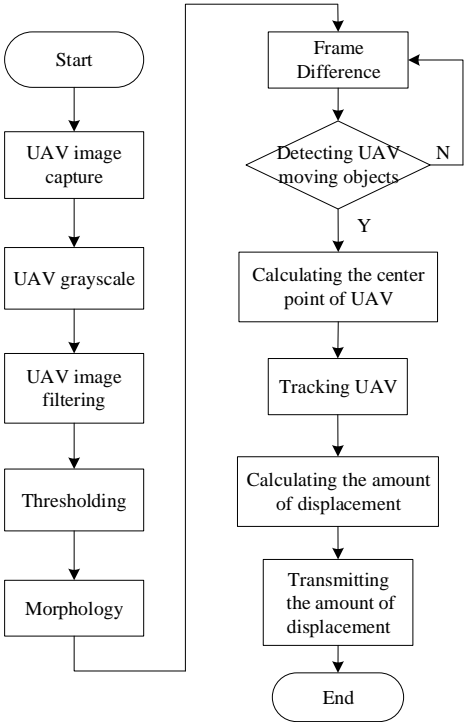
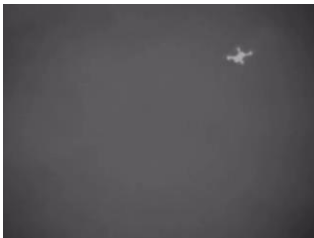


Figure 2. Drone image tracing flowchart.

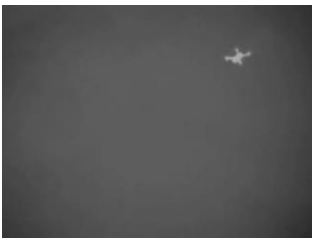
A two-axis tracing device adopts image processing techniques to deal with images of a dynamic object. An image capture card in the device acquires pictures at a speed of 30 frames per second, and then performs image processing, as shown in the image processing flowchart in Figure 2. The acquisition of a dynamic drone contour [15, 16] is carried out by the frame difference method with image pre-processing. The frame difference method allows extraction of a motion region [17, 18] on two adjacent images by performing differential operations. It oversees the movement of anomalous objects [19] in the picture with the movement of the target and the movement of the camera. There will be a significant difference between adjacent frames. For real-time tracing, due to the fast drone flight speed, a small amount of immediate calculation is needed to trace the drone steadily. There is an advantage that the background accumulation problem for the frame difference method is almost ignored. The renew speed is quick and less calculation is required for tracing a drone immediately, which is shown in Figure 3(f). The formula is as follows:

$$D(x,y) = f_{m+1}(x,y) - f_m(x,y).....(1)$$

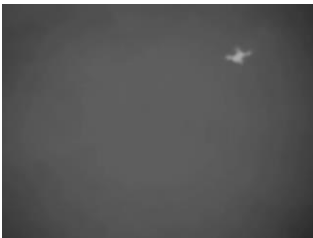
where m and (m+1) are the results of differential operations for the mth frame and (m+1)th frame.



(a) thermal image acquisition



(b) grayscale



(c) image filtering

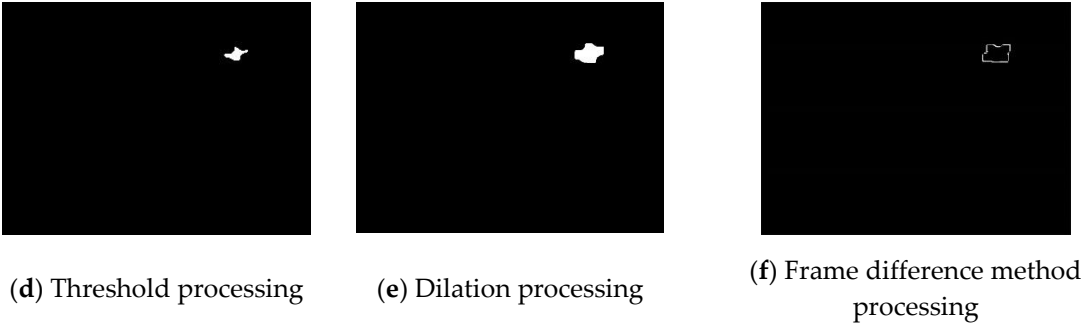


Figure 3. Drone image acquisition procedures.

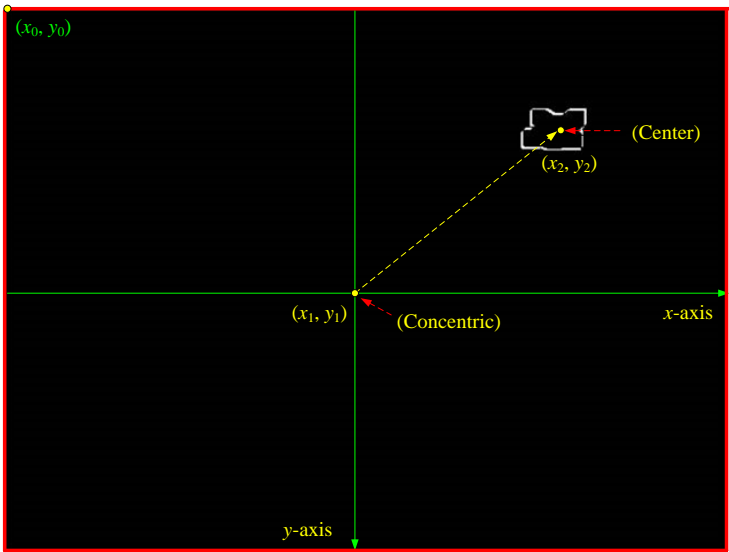


Figure 4. Diagram of the target drone displacement vector.

The drone tracing mechanism of a two-axis tracing device is to convert a two-dimensional variation of the pixels of a captured image ($\Delta x, \Delta y$) into a step-level control amount of a two-axis step motor inside the above device. A movement amount is calculated by the above conversion of acquired images, which is applied to complete drone tracing operations. Suppose the image's resolution is set as $2P \times 2Q$ pixels, which is shown in Figure 4. An acquired screen image's origin point is set as (x_0, y_0) , and its pixel coordinate is $(-P, -Q)$. The screen's center point is (x_1, y_1) , which is the concentric point in the tracing screen, and its pixel coordinate is defined as $(0, 0)$. Therefore, the pixel of the screen image in the x -axis ranges from $-P \sim +P$, and the y -axis ranges from $-Q \sim +Q$. When the target drone's image enters the edge of the rectangular frame of the tracing device, it is acquired by the visual identification of the system. The tracing system instantly estimates the pixel difference (p, q) between the x -axis and the y -axis of the center position (x_2, y_2) and the concentric point (x_1, y_1) of the drone: $(x_2 - x_1, y_2 - y_1)$. When the p value is positive, it reveals that the center point of target drone is on the right side of the center point of the screen image, and vice versa for the left side. Furthermore, when the q value is positive, it reveals that the center point of the target drone is on the lower side of the center point of the screen image, and vice versa.

In order to trace the invading drones dynamic position at any time, three-dimensional coordinate parameters such as the flight altitude of the drone and its longitude and latitude are calculated, and these parameters are immediately transmitted to the ground monitoring center for direct attack or indirect hunt for the drone. The control requirements for a two-axis step motor in the two-axis tracing device are as follows:

Suppose the position of the concentric point of the screen image is (x_1, y_1) and the position of the drone is (x_2, y_2) , which are shown in Figure 4. The system traces the drone in real time, and the requirement of motor control speed of the two-axis device is:

$$V_x = \frac{p}{\Delta t}, \quad V_y = \frac{q}{\Delta t} \dots \dots \dots (2)$$

where Δt is the time for the duration of the image capture card to acquire images, which is normally 30 frames per second; that is, $\Delta t = 1/30$ second. The smaller the value of Δt , the more accurately the tracing system can grasp the drone movement trajectory, so that the alignment screen's concentric point of the tracing device can lock the drone as soon as possible, but relatively requires a faster software computing requirement.

The system has to convert the pixel difference (p, q) of the image into the tracing step angle of the two-axis step motor of the tracing device, that is, the image coordinates are converted from pixel values (p, q) to the number of steps (S_p, S_q) to drive the two-axis step motor, where S_p and S_q represent the step numbers of the step motor for the x -axis and y -axis, respectively. Since the step motor rotates 360° in one turn, assuming that S_R is the total number of steps in one circle of the step motor, the step angle θ_m of each step motor is:

$$\theta_m = \frac{360^\circ}{S_R} \dots \dots \dots (3)$$

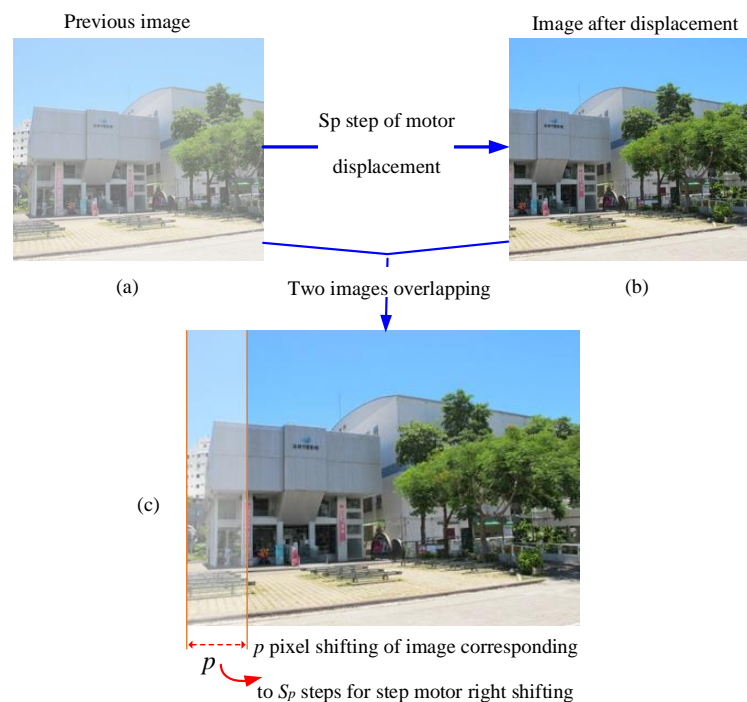


Figure 5. Schematic diagram of the relationship between the step angle and image.

Due to the necessary θ_m value of the step motor in the tracing device is related to the pixel value acquired by the image capture card, it is important to find the correlation between these two matters. First, suppose the full-color (or thermal imaging) camera acquire the picture in a certain direction as shown in Figure 5(a). Then, suppose the driver of the step motor in the tracing device send the square wave signal with the number of S_p to the step motor of the x -axis, which drives the step motor of the x -axis to carry out the rotation of S_p steps. These make the two-axis device carry out a horizontal right movement, and then acquires the immediate picture, as shown in Figure 5(b). Finally, by comparing the images of Figure 5(a) and Figure 5(b) with the superimposed image and calculating the increment of the p -value of these two images of the x -axis after the step motor of the x -axis rotates steps of S_p ,

as shown in Figure 5(c), the tracing system can receive the number of steps p_s of the step motor necessary for each pixel in the x -axis direction:

$$p_s = \frac{s_p}{p} \dots\dots\dots (4)$$

Furthermore, the number of steps of the step motor necessary for each pixel in the y -axis direction is q_s .

$$q_s = \frac{s_q}{q} \dots\dots\dots (5)$$

3. Drone Three-Dimensional Coordinate Calculation

(1) Detection method for drone height: The rotation direction and angle judgment mode of the two-axis tracing device are based on the value sensed from multi-axis attitude meters. Therefore, there is a close relationship between the placement position of the attitude meter and the accuracy of the system data. The starting point of orientation determination by an attitude sensing component is based on the preset position of its own module. The drone movement orientation of the screen image is based on the movement of the lens, so the position of the sensing component of the attitude meter should be placed as close as possible to the camera lens, so that the angular deviation will be smaller. After many tests, we found that it has the best effect when placed under the lens.

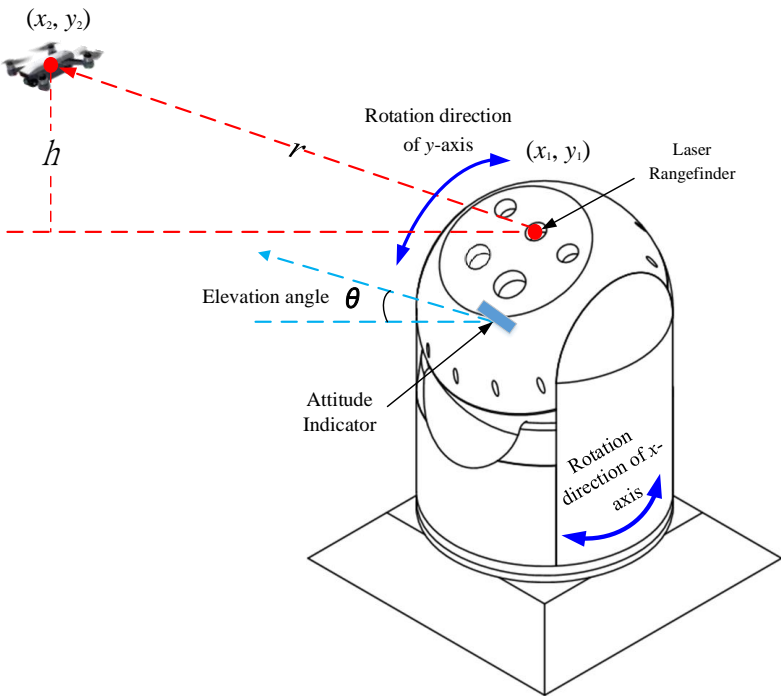
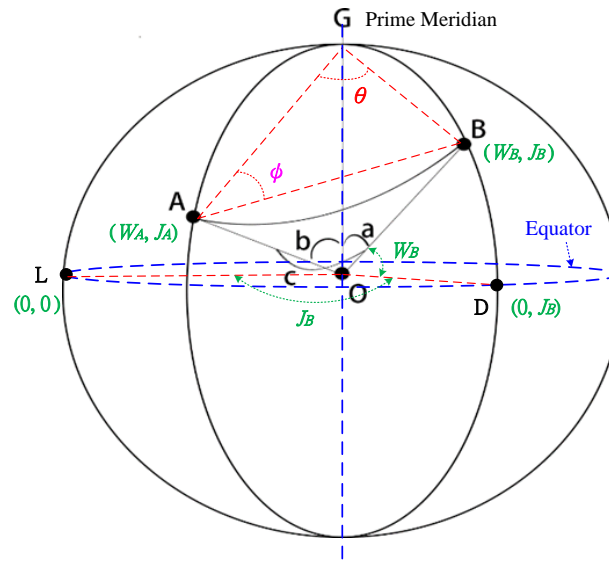


Figure 6. Schematic diagram of the calculation of the height of the drone on the image concentric point by the attitude meter and the laser ranger.

When the tracing device finds that the drone has entered the visual image of the screen as in Figure 6, the system immediately traces the drone image in the screen through visual identification, and computes the relative relationship between the drone image and the center point of the visual image screen. Then, it performs an action of target drone tracing and position locking. The drone image enters the center point (x_1, y_1) of the visual image screen of the tracing device, and the laser rangefinder can measure when the target drone enters the laser ranging range. The distance value (r) from the target is obtained, and the elevation angle (θ) of the rotating stage at this time is obtained by the multi-axis attitude meter in the apparatus. As shown in formula (6), the flight altitude h of the drone can be converted.

205

$$h = r \times \sin\theta = \sqrt{(x_2 - x_1)^2 + (y_2 - y_1)^2} \times \sin\theta \dots\dots\dots(6)$$



206

207

Figure 7. Schematic diagram of the longitude and latitude sphere coordinate algorithm for the drone.

208

209

210

211

212

213

214

215

216

217

218

219

220

221

222

(2) Detection method for drone longitude and latitude coordinate as well as azimuth: When the tracing system locks the target drone to the center point position (x_1, y_1) of the image screen through tracing, the target drone has entered the laser ranging range. The values of the distance and the horizontal elevation angle of the target drone from the test site can be obtained by laser rangefinders and the attitude meter of the two-axis device, and then the longitude and latitude, and the azimuth angle (relative to the north angle), of the drone can be analyzed. In this paper, the drone longitude and latitude coordinates [20, 21] can be obtained by using the target coordinate conversion formula. A schematic diagram of the longitude and latitude coordinate algorithm of the target drone is shown in Figure 7. This algorithm is applicable to the distance calculation between any two points on the spherical surface, where O is the center point of the sphere, and A and B are any two points on the sphere. Point A represents the longitude and latitude coordinates (W_A, J_A) obtained by the GPS in the dual-axis tracing platform, and point B represents the unknown longitude and latitude coordinates (W_B, J_B) of the drone traced by the dual-axis tracing platform. The longitude and latitude coordinates of point B can be obtained by the sphere longitude and latitude coordinate conversion [21]. Other parameters are as follows:

223

224

225

226

Point G: the true north position of the sphere; point O: center of the sphere; R: average radius of the earth (~6371 km);

227

228

229

230

231

232

233

234

235

(W_A, J_A) : the value of the longitude and latitude of point A obtained by the GPS of the two-axis device;

ψ (Azimuth angles of point A, B and G): obtained by the magnetometer and gyroscope of the multi-axis attitude meter in the two-axis device;

$\angle a$: the angle between the two points B and G and the ground connection \overline{GO} ;

$\angle b$: the angle between the two points A and G and the ground connection \overline{GO} ;

$\angle c$: the angle between the two points A and B and the ground connection \overline{GO} ;

\widehat{AB} : the spherical distance between the two points of point A (two-axis device) and B (drone aerial location); that is, the length of minor arc \widehat{AB} in the arc generated by the intersection of the planes passing through the three points A, O and B and the ball.

$\angle c$ is the metric angle:

236

$$\angle c = \frac{\widehat{AB}}{R} \times \frac{180^\circ}{\pi} \quad (7)$$

Since the spherical distance between point A (two-axis device) and point B (drone aerial location) is much smaller than the length of R, the spherical distance \widehat{AB} between two points can be approximated as the linear distance between two points \overline{AB} , so formula (7) can be corrected to:

$$\angle c = \frac{\overline{AB}}{R} \times \frac{180^\circ}{\pi} \quad (8)$$

$\angle a$ and $\angle \theta$ can be converted by the sphere longitude and latitude coordinates [21], and formula (9) and formula (10) can be obtained as follows,

$$\angle a = \cos^{-1}(\sin A_w \times \cos \angle c + \cos A_w \times \sin \angle c \times \cos \psi) \quad (9)$$

$$\angle \theta = \sin^{-1} \left(\frac{\sin c \times \sin \psi}{\sin a} \right) \quad (10)$$

Since the drone flight altitude at point B is within a few kilometers above the ground, the length between the two points A and B and the point O of the center of earth can be regarded as the same, and $\angle \theta$ can be regarded as the longitude difference between the two points A and B. Thus, the value of the longitude and latitude of point B (W_B , J_B) is the longitude and latitude coordinates of drone, where:

$$W_B = 90^\circ - \angle a \quad (11)$$

$$J_B = J_A + \angle \theta \quad (12)$$

As described above, the longitude and latitude values of the drone flying in the air, which is locked by the two-axis device and the flight altitude h, can be calculated and acquired, then transmitted wirelessly to the ground control center for the attack tasks of direct attack or tracing and entrapping.

III. Experimental Results and Discussion

The drone tracing test results of the two-axis device, software and hardware used in the study are as follows:

1. Development environment of the software and hardware:

(1) Visual identification software development: This study uses OpenCV (Open Source Computer Vision Library), which is a library application software for computer vision and machine learning. It was originally initiated and developed by the Intel Corporation and distributed under the license of BSD (Berkeley Software Distribution license). It can be used free of charge in business and research. OpenCV includes many image processing functions, machine learning algorithms, and libraries for computer vision applications.

(2) Sensors and imaging equipment:

- Infrared thermal imaging: As shown in Figure 8, this paper uses a intermediate level infrared thermal imaging camera (TE-EQ1), which is equipped with a 50 mm fixed-focus lens with 384×288 pixels. It can be used for mobile tracing tests with a drone flying altitude of about 100 meters. The TE-EQ1 is capable of observing the distribution of heat sources in drones, providing users with drone tracing tasks through computer vision technology.



Figure 8. TE-EQ1 infrared thermal imaging device.

- Full-color single-lens reflex camera: This study uses a Sony $\alpha 7SII$ (Japan) with a Sony SEL24240 lens, as shown in Figure 9. The Sony $\alpha 7SII$ features ultra-high sensitivity and an ultra-wide dynamic range. It has a 35 mm full-frame 12.2 megapixel image quality, with a wide dynamic range of ISO 50 to 409,600 and a BIONZ X processor, which optimizes the performance of the sensor, highlights details and reduces noise, and records 4K (QFHD: 3840*2160) movies in full-frame read-out without image pixel merging, effectively suppressing image edge aliasing and moiré. The main reason for choosing this device and lens is that the Sony $\alpha 7SII$ can be transmitted via HDMI, achieving high-quality image instant transmission and less delay in camera transmission than others of a similar price, allowing instant acquisition of images and image processing. Additionally, the Sony SEL24240 telephoto single lens has a focal length of 240 mm, allowing drones at short distances (<100m) to be clearly displayed on the tracing screen.



(a) Body: Sony $\alpha 7SII$ (b) Lens: Sony SEL24240

Figure 9. Single-lens reflex camera.

- Thermal image acquisition: The UPG311 UVC image acquisition device is used to read the infrared thermal imaging images. The infrared thermal imaging output interface is NTSC or PAL. It is compatible with multiple systems and supports plug-and-play and UVC (USB video device class). The agreement supports an image resolution of up to 640*480 pixels.
- Frame grabber for full-color camera: We used the Magewell USB Capture HDMI Gen2 capture card, which supports single-machine simultaneous connection of multiple groups of operations, and is compatible with Windows, Linux, and OS X operating systems with no need to install drivers, a real Plug and Play. It supports a completely standard development interface. In addition, the input and output interfaces use HDMI and USB 3.0 respectively, it supports an input image resolution of up to 2048 \times 2160 and a frame rate of up to 120 fps, and it automatically selects the aspect ratio, that is the most appropriate for the picture.
- Laser rangefinder: This article uses the LRF 28-2000 semiconductor laser rangefinder, as shown in Figure 10. The main reason for using this laser rangefinder is that it uses an RF section of 900~908 nm wavelength to protect the human eye, with a range of 3.5 m to as long as 2.0 km. Its measurement resolution and measurement accuracy are 0.1 m and 1.0 m, respectively. Its specifications are suitable for the measurement of the flight

altitude of the short-range drones in this study, and its significant distance measurement accuracy can be used as a basis for testing the drone flight altitude.



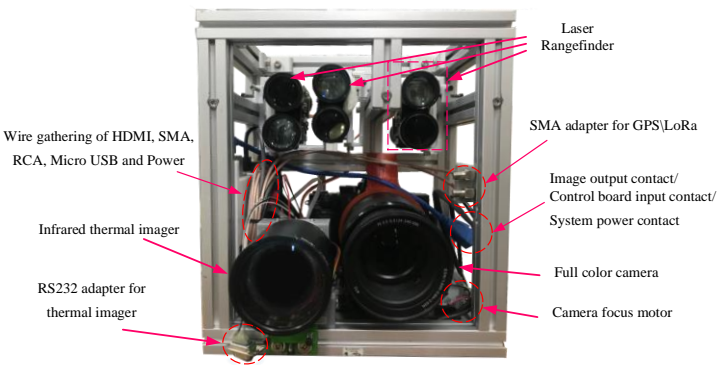
Figure 10. Laser rangefinder LRF 28-2000B.

- Multirotor: At present, the market share of multirotors is dominated by DJI Dajiang Innovation. With its drone, which is lightweight, portable and has a small volume being sold at a friendly price, it is very popular among people generally. Additionally, the news media have reported that most drone events have involved drones from DJI Dajiang Innovation, so this study uses the DJI Mavic Pro multirotor as the main tracing target of the experiment.

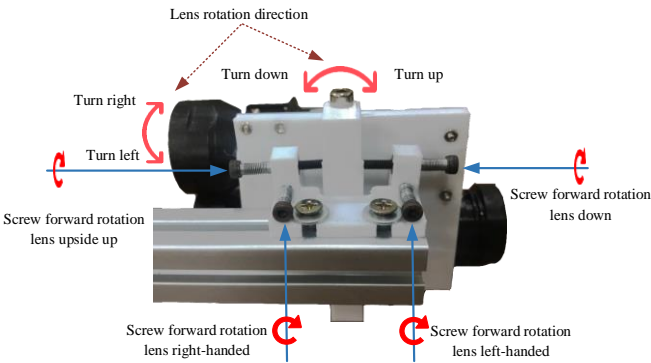
2. Development of Hardware for the Two-Axis Device

To make it shockproof, robust and waterproof, the outer material of the two-axis device of this paper is made of Teflon. It is equipped with two sets of step motors (including its step motor driver). These two step motors respectively control the up and down elevation angle and the movement of the left and right rotation of the two-axis device. The pixels of full-color image used in this device are 640×480; that is, P=640 and Q=480, and a two-phase step motor $S_R = 10,000$ is used; that is, $\theta_m = 0.036$. The test height of drone tracing is 10~100 meters, and the radius of the two-axis device is $a=0.25\text{m}$. The maximum flight speed of the drone is 20km/hr. As a result the maximum rotation speed of the two-axis device is $V_{r,max} = \frac{a}{R_{min}} \times V_{uav} \approx 0.139(\text{m/s})$.

Figure 11 (a) shows the two-axis tracing device, and Figure 11 (b) shows the hardware structure inside the two-axis tracing device. Figure 11 (c) shows the focus fine-tuning structure diagram for the laser ranger.



(a) The two-axis tracing device (b) appearance of the front view of the image lens/laser ranger



(c) picture of the focus fine-tuning configuration of the laser ranger

329 **Figure 11.** The inner hardware structure of the two-axis tracing device.

330 The main control board of the two-axis tracing device is shown in Figure 12(a), and the motor
331 control unit is shown in Figure 12(b).

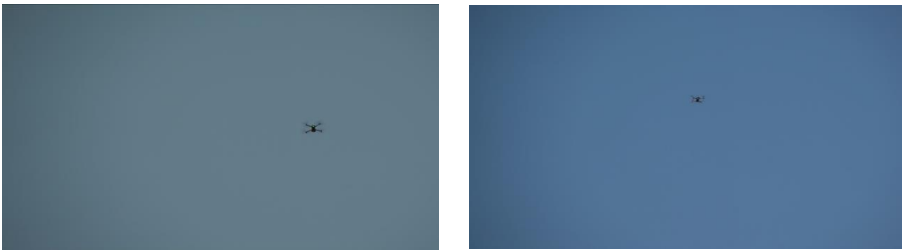


(a) main control board (b) motor control board

332 **Figure 12.** 3D simulation and physical circuit picture of the main control unit and motor control unit.

333 3. Drone Image Identification and Tracing Test in Different Weather Environments

334 This paper uses the DJI Mavic Pro four-axis drone to achieve tracing tests of drone flight in all
335 kinds of weather. The results of tracing tests on sunny days and at flight altitudes of about 70–105
336 meters are shown in Figure 13. At more than 102 meters, drone movement cannot be determined
337 (restricted by the resolution of the full-color camera). The test results of various weather conditions—
338 sunny, cloudy, and rainy—are shown in Figure 14, Figure 15, and Figure 16. The detailed test
339 description is as follows:



(a)) The distance is 72 m (b) The distance is 86 m

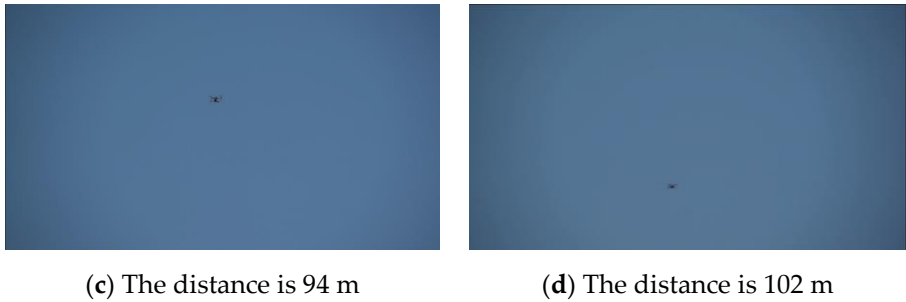


Figure 13. Tests of drone flight altitudes (on a sunny day).

(1) Sunny environment: As shown in Figure 14, the capture effects of the drone's image on sunny days are different based on different brightness and sunshade levels due to different conditions. In the case of large changes in ambient brightness, the effect of light on the lens and tracing is quite large. In addition, the size of the drone is small, which can cause the phenomenon that the target drone is lost while in image processing, and then recovered.

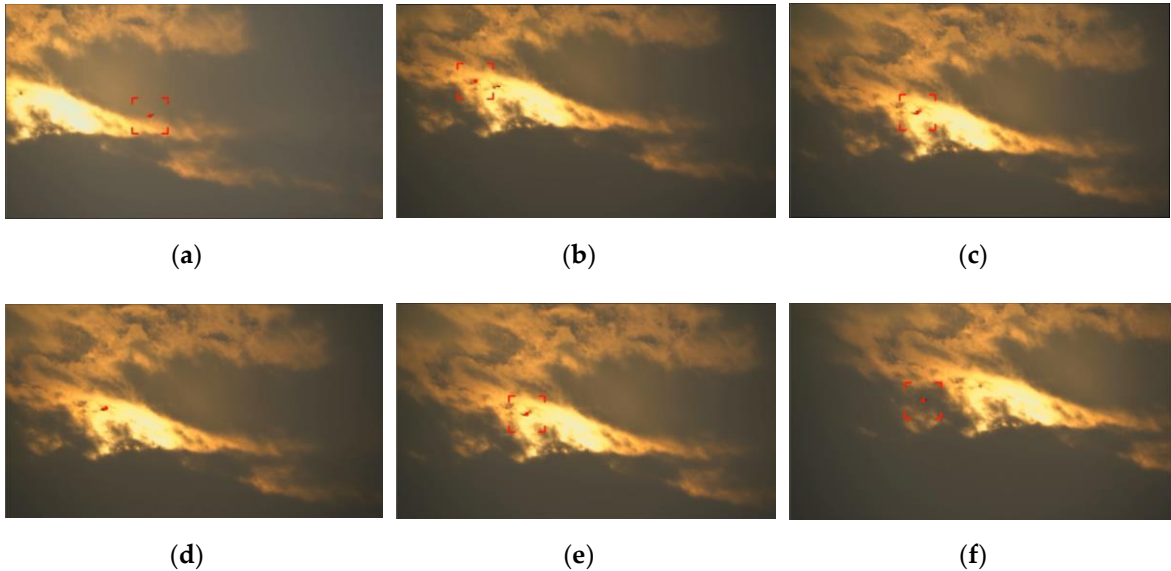
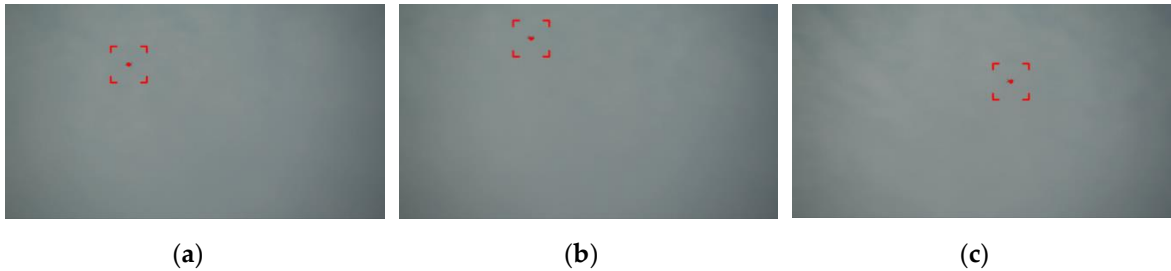


Figure 14. Results of the tracing test on sunny days (drone flight altitude is 105 m).

(2) Cloudy environment: Figure 15 shows the acquisition effects of the drone's image on cloudy days. The cloudy background is clean and free of other interference. In addition, the difference in gray scale presented by the sky is not obvious, making the tracing target more significant. The tracing effect was good, and the target drone was not easy to lose.



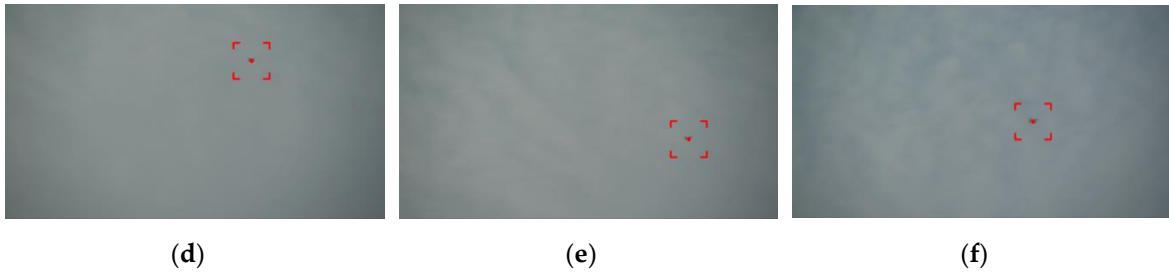


Figure 15. Results of the tracing test on cloudy days (drone flight altitude is 130 m).

(3) Rainy environment: Figure 16 shows the acquisition effects of the drone's image on rainy days. In general, no drone appears on rainy days (a normal drone is usually not waterproof); drone players usually choose to take off in clear weather. In the case of rain, the lens is susceptible to raindrops. Coupled with poor vision, it is impossible to clearly present the tracing image, and it is difficult to judge the target, which leads to a poor tracing effect.



Figure 16. Results of the tracing test on rainy days (drone flight altitude is 80 m).

4. Test of drone Tracing and Longitude and Latitude Coordinates

Figure 17 shows the tracing process through a full-color image. A target drone was successfully hit with laser rangefinders in this study. Conversion of the sensed values of the multi-axis attitude meter and the known longitude and latitude coordinates (W_A , J_A) of the GPS of the two-axis device were achieved through the longitude and latitude sphere coordinate algorithm. It can be calculated that when the drone is locked by the tracing system, its current longitude and latitude coordinates (W_B , J_B) are (120.32, 22.64), and the flying altitude is 58.7 meters.

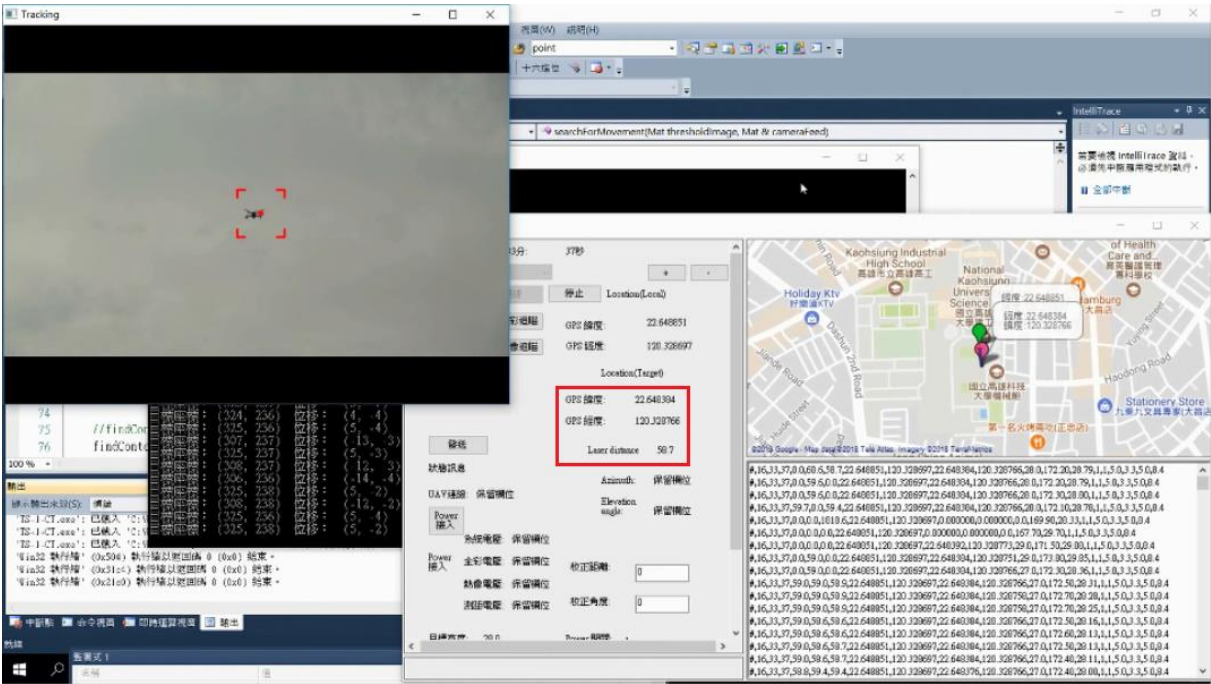


Figure 17. Test results of the full-color tracing interface.

Figure 18 shows the tracing process through a thermal image. A target drone was successfully hit with the laser rangefinders of the two-axis device. Conversion of the sensed values of the multi-axis attitude meter and the known longitude and latitude coordinates (W_A , J_A) of the GPS of the device were achieved through the longitude and latitude sphere coordinate algorithm. It can be calculated that when the drone is locked by the tracing system, its current longitude and latitude coordinates (W_B , J_B) are (120.32, 22.64) and the flying altitude is 51.9 meters.

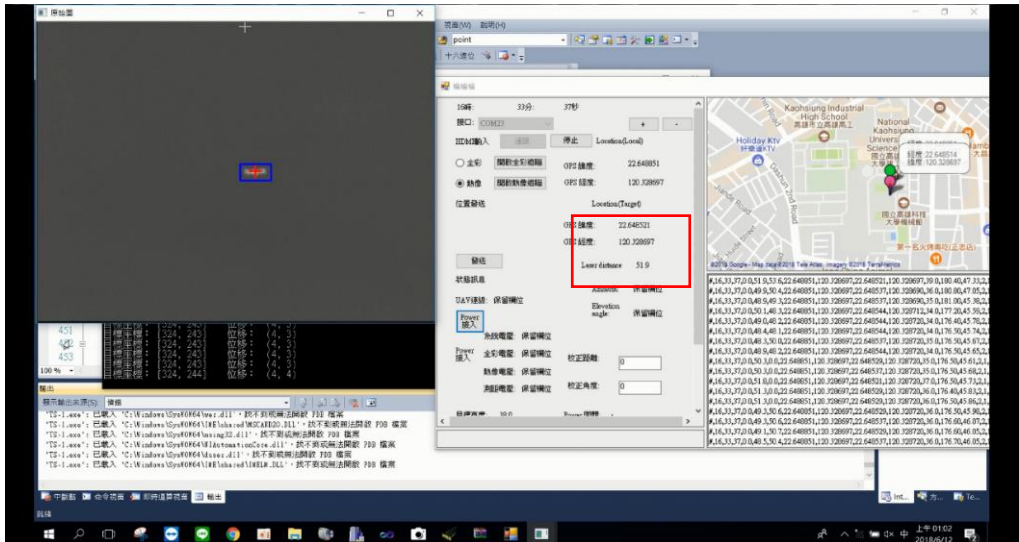


Figure 18. Test results of thermal imaging tracing interface.

IV. Conclusion

As the number of drones increases, so does the risk to flight safety. It is only a matter of time before a drone is used to attack aircrafts to cause damage. Governments are worried that the increasing number of amateur drones will lead to more flight accidents. Therefore, many governments now regulate drone registration, driver's license regulations, and so forth, and also limit flight range and maximum flight altitude. In addition, various anti-UAV systems have been proposed, but these AUDS either use manual aiming or expensive radar for tracing drones. This

study uses two sets of step motors with a thermal imaging camera/full-color camera and sensing module for the dynamic tracing of drone flying at high altitudes, and measurement of its three-dimensional coordinates, which makes it a low-cost and practical drone tracing device for anti-UAV systems. Future research will combine an attack drone and a net gun with a throwing function to provide a safe anti-UAV system with tracing and capturing of drones.

Acknowledgements: The team would like to express sincere thanks to the Ministry of Science and Technology and Southern Taiwan Science Park Bureau of Taiwan. Without their support, this work will not be done. The project numbers are MOST 107-2622-E-992 -006 -CC2 and 107B19.

References

- [1] Wai Fong Boh, Wee-Kiat Lim and Yi Zeng, "Da Jiang Innovations (DJI): the rise of the drones," *the Asian Business Case Centre-Nanyang Technology University Singapore*, pp.1-28, 2017.
- [2] Kelly Sze Hiu Chin, Alex Chun Yin Siu, Stanley Yau Kit Ying, and Yifan Zhang, "Da Jiang Innovation, DJI: The Future of Possible," *ACADEMY OF ASIAN BUSINESS REVIEW*, Vol. 3, No. 2., pp.83-109, 2017.
- [3] T.J. Diaz, "Lights, drone... action," *IEEE Spectrum*, Volume: 52, Issue: 7, pp. 36 – 41, 2015.
- [4] Marc Lort, Albert Aguasca, Carlos López-Martínez and Tomás Martínez Marín, "Initial Evaluation of SAR Capabilities in UAV Multicopter Platforms," *IEEE Journal of Selected Topics in Applied Earth Observations and Remote Sensing*, Volume: 11, Issue: 1, pp. 127 – 140, 2018.
- [5] Paul Dempsey, "View from Washington [News Comment]," *Engineering & Technology*, Volume: 10, Issue: 2, pp.14, 2015.
- [6] Paul Dempsey, "View from Washington [News Briefing]," *Engineering & Technology*, Volume: 9, Issue:9, pp.16, 2014.
- [7] Miroslav Kratky and Vaclav Minarik, "The non-destructive methods of fight against UAVs," *2017 International Conference on Military Technologies (ICMT)*, pp.690-394, 2017.
- [8] Andrew Hull and David Markov, "Foreign Counter-Unmanned Aerial Systems: Developments in the International Arms Markets," *IDA Research Notes*, pp.25-33, 2017.
- [9] Guoru Ding, Qihui Wu, Linyuan Zhang, Yun Lin, Theodoros A. Tsiftsis, and Yu-Dong Yao, "An Amateur Drone Surveillance System Based on Cognitive Internet of Things," *Amateur drone surveillance, Cognitive internet of things, Unmanned aerial vehicles, Anti-drone technology*, pp.1-17, 2017.
- [10] Holland Michel, "About the Center for the Study of the Drone," *Counter-Drone System*, pp.1-20, 2018.
- [11] POP Sebastain and LUCHIAN Andrei, "Considerations Regarding Detection and Combat System for UAV's," *RECENT*, Volume: 18, Issue: 1(15), pp.49-55, 2017.
- [12] Diogo Branquinho Ramos, Denis Silva Loubach, and Adilson Marques da Cunha, "Developing a distributed real-time monitoring system to track UAVs," *IEEE Aerospace and Electronic Systems Magazine*, Volume: 25, Issue: 9, pp.18-25, 2010.
- [13] Zhuofan Xu, Ruixuan Wei, Xiaolin Zhao, and Shulei Wang, "Coordinated Standoff Target Tracking Guidance Method for UAVs," *IEEE Access*, Volume: 6, pp. 59853-59859, 2018.
- [14] Vadim Stary, Vaclav Krivanek, and Alexandr Stefek, "Optical detection methods for laser guided unmanned devices," *Journal of Communications and Networks*, Volume: 20, Issue: 5, pp. 464-472, 2018.
- [16] Bor-Horng Sheu, Chih-Cheng Chiu, Wei-Ting Lu, Chun-Chieh Lien, Tung-Kuan Liu and Wen-Ping Chen, "Dual-axis Rotary Platform with UAV Image Recognition and Tracking," *Microelectronics Reliability*, Volume 95, pp.8-17, April. 2019.
- [15] Eija Honkavaara, Matti A. Eskelinen, Ilkka Pölönen, Heikki Saari, Harri Ojanen, Rami Mannila, Christer Holmlund, Teemu Hakala, Paula Litkey, Tomi Rosnell, Niko Viljanen, and Merja Pulkkanen, "Remote Sensing of 3-D Geometry and Surface Moisture of a Peat Production Area Using Hyperspectral Frame Cameras in Visible to Short-Wave Infrared Spectral Ranges Onboard a Small Unmanned Airborne Vehicle (UAV)," *IEEE Transactions on Geoscience and Remote Sensing*, Volume: 54, Issue: 9, pp.5440-5454, 2016.
- [17] Hongpeng Yin, Yi Chai, Simon X. Yang, and Xiaoyan Yang, "Fast-moving target tracking based on mean shift and frame-difference methods," *Journal of Systems Engineering and Electronics*, Volume: 22, Issue: 4, pp.587-592, 2011.
- [18] Bo Du, Yujia Sun, Shihan Cai, Chen Wu, and Qian Du, "Object Tracking in Satellite Videos by Fusing the Kernel Correlation Filter and the Three-Frame-Difference Algorithm," *IEEE Geoscience and Remote Sensing Letters*, Volume: 15, Issue: 2, pp.168-172, 2018.

- 435 [19] Peng Chen, Yuanjie Dang, Ronghua Liang, Wei Zhu, and Xiaofei He, "Real-Time Object Tracking on a Drone
436 With Multi-Inertial Sensing Data," *IEEE Transactions on Intelligent Transportation Systems*, Volume: 19 ,
437 Issue: 1, pp.131-139, 2018.
- 438 [20] Xu Chang and Xie Haiyan, "Notice of Retraction-Using sphere parameters to detect construction quality of
439 spherical buildings," *2010 2nd International Conference on Advanced Computer Control*, Volume: 4, pp.17-17,
440 2010.
- 441 [21] Homayoon Oraizi and Hadi Soleimani, "Optimum pattern synthesis of non-uniform spherical arrays using
442 the Euler rotation," *IET Microwaves, Antennas & Propagation*, Volume: 9 , Issue: 9, pp. 898 – 904, 2015.