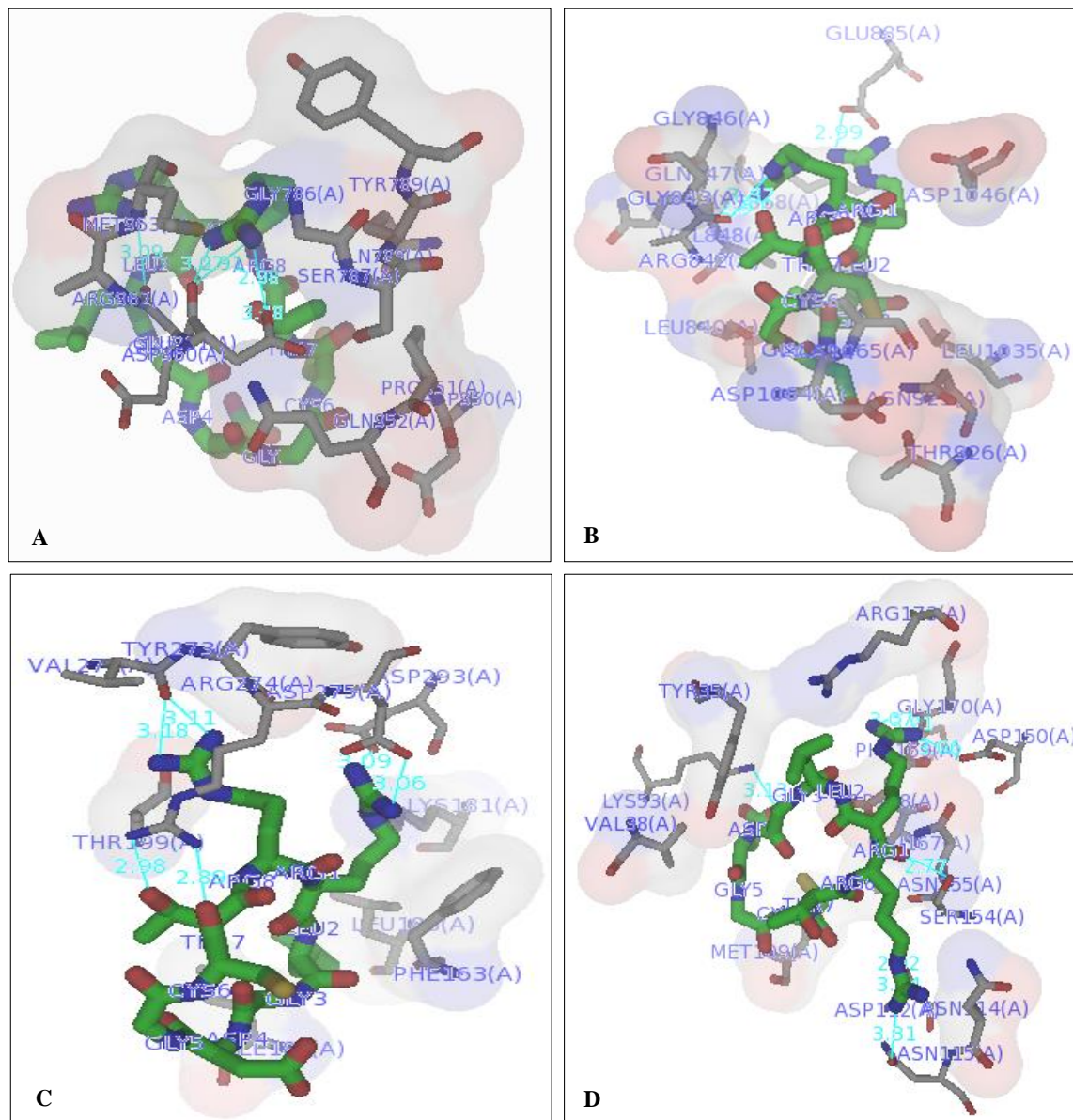
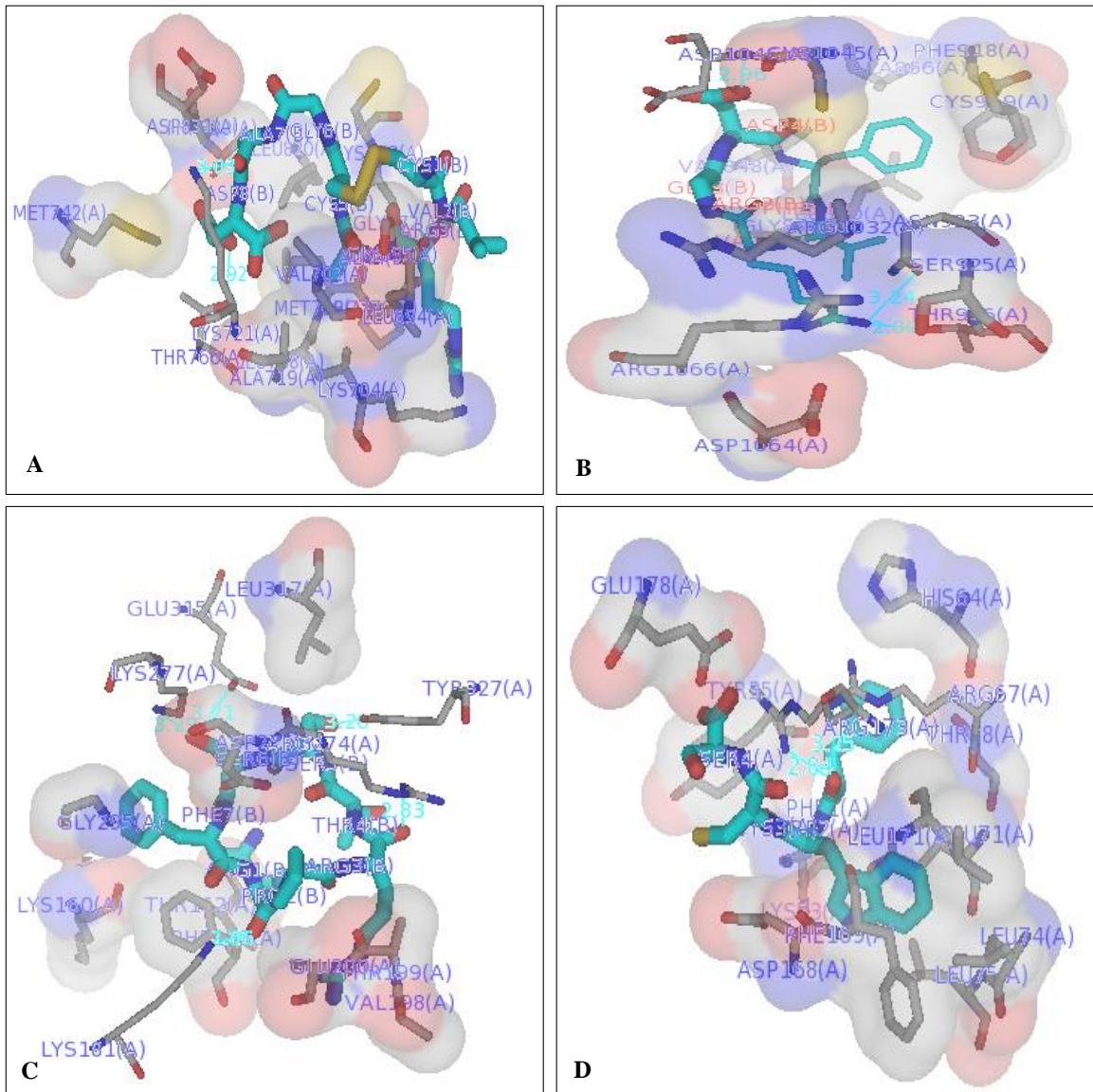


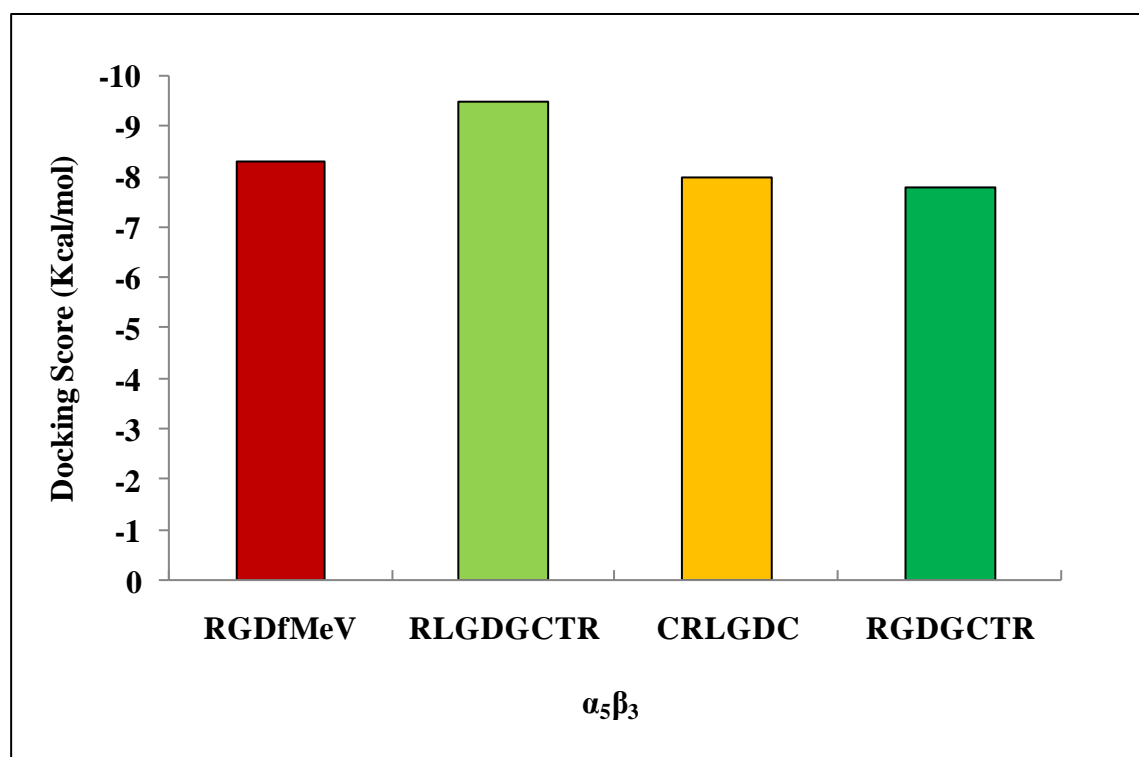
Supplementary Figures



**Fig. SB.1** Interaction of cyclosporin with various cancer-related proteins using LigPlot (3D representation). A) EGFR Kinase B) VEGFR2 Kinase C) PKB D) p38.



**Fig. SB.2** Interaction of a few peptide-based ligands with various cancer-related proteins using LigPlot (3D representation). A) CVRACGAD and EGFR kinase B) Cilengitide and VEGFR2 kinase C) RPRTSSF and PKB D) FWCS and p38.



**Fig. SB.3** Relative binding affinities (Kcal/mol) of RGD-like peptides towards integrin  $\alpha_5\beta_3$

**Fig. SB.4** The binding affinities of cyclosporin along with other RGD-like peptides

| Peptide                | Binding affinities (Kcal/mol) |
|------------------------|-------------------------------|
| RGDfMeV (Cilengitide)  | -8.3                          |
| RLGDGCTR (Cyclosporin) | -9.5                          |
| CRLGDC (Analogue I)    | -8.0                          |
| RGDGCTR (Analogue II)  | -7.8                          |