

Article

Habitat Climate Change Vulnerability Index Applied to Major Vegetation Types of the Western Interior United States

Patrick J. Comer^{1†}, Jon C. Hak¹, Marion S. Reid¹, Stephanie Auer², Keith Schulz¹, Healy Hamilton³, Regan Smyth³, Matthew Kling⁴

¹ NatureServe, 1680 38th Street, Suite 120, Boulder CO 80301

² NatureServe, San Francisco CA

³ NatureServe, 2511 Richmond Highway, Suite 930, Arlington, VA 22202

⁴ University of California, Berkeley CA

† Correspondence pcomer0318@gmail.com; Tel.: +01-703-797-4802

Abstract: We applied a framework to assess climate change vulnerability of 52 major vegetation types in the western United States to provide spatially-explicit input to adaptive management decisions. The framework addressed climate exposure and ecosystem resilience; the latter derived from analyses of ecosystem sensitivity and adaptive capacity. Measures of climate change exposure used observed climate change (1981-2014) and then climate projections for the mid-21st century (2040-2069 RCP 4.5). Measures of resilience included (under ecosystem sensitivity) landscape intactness, invasive species, fire regime alteration, and forest insect & disease risk, and (under adaptive capacity), measures for topo-climate variability, diversity with functional species groups, and vulnerability of any keystone species. Outputs are generated per 100km² hexagonal area for each type. As of 2014, moderate climate change vulnerability was indicated for >50% of the area of 50 of 52 types. By the mid-21st century, all but 19 types face high or very high vulnerability with >50% of the area scoring in these categories. Measures for resilience explain most components of vulnerability as of 2014, with most targeted vegetation scoring low in adaptive capacity measures and variably for specific sensitivity measures. Elevated climate exposure explains increases in vulnerability between the current and mid-century time periods.

Keywords: adaptive capacity, climate change vulnerability, exposure, resilience, sensitivity, vegetation

1. Introduction

Climate change represents a globally pervasive stress on natural ecosystems. Temperature and precipitation regimes drive ecosystem productivity and natural dynamics, such as the rate of plant growth, the frequency of natural wildfire, and seasonal streamflow [1]. Paleoecological research has shown that past episodes of climate change triggered transformation of natural communities at regional and local scales with varying speed and magnitude [2, 3]. As the rate of climate change increases, substantial shifts in key ecological processes are likely to cascade through natural communities, resulting in altered productivity, change in species composition, local extinctions, and many instances of ecological degradation or collapse [4].

Land use planners, managers, and policy makers are not well prepared for these changes. Conservation practitioners often lack a sufficient understanding of the many linkages between changing climate and key ecological processes. Nor do they fully understand the many interactions of climate-induced stress with other ecological stressors, such as those tied to land use, which may have already reduced the resiliency of many natural communities [5]. However, because of the controlling link between climate and many ecological

processes, and the individualistic responses of component species, natural communities could transform in unprecedented ways [6, 7]. Therefore, in any given place, a transparent assessment of climate change vulnerability for natural communities is needed to help quantify risk of ecological degradation or collapse.

While most climate change vulnerability assessments focus on individual species, here we present a framework and demonstrate methods suitable for natural communities. This Habitat Climate Change Vulnerability Index (HCCVI) integrates variables from other assessments and results in products that support practical decision making and communication. A repeatable and transparent index of climate change vulnerability designed for natural communities helps to determine those types that, in all or part of their distribution, are most at risk of climate change impacts. It can provide an early warning of elevated risk for associated species, and a baseline for developing scientifically grounded, ecosystem-based strategies for climate change adaptation.

1.1. Climate-Change Vulnerability Assessment

The notion of vulnerability to climate change was succinctly defined in the fourth assessment of the Intergovernmental Panel on Climate Change [9] as, “the degree to which a system is susceptible to - and unable to cope with - adverse effects of climate change; including climate variability and extremes. Vulnerability is a function of the character, magnitude, and rate of climate change and variation to which a system is exposed, its sensitivity, and its adaptive capacity.” These terms of exposure, sensitivity, and adaptive capacity address both extrinsic factors (exposure) and intrinsic factors (sensitivity and adaptive capacity). They were defined by the IPCC as: (*exposure*) - the degree of climate stress upon a unit of analysis; it may be represented as either long-term change in climate conditions, or by changes in climate variability, including the magnitude and frequency of extreme events; (*sensitivity*) - the degree to which a system will be affected by, or responsive to climate stimuli; and, (*adaptive capacity*) - the potential or capability of a system to adjust to climate change, including climate variability and extremes, to moderate potential damages, to take advantage of opportunities, or to cope with consequences.

Some have advocated use of different definitions for vulnerability assessment of species to emphasize species responses to climate change [10]. The IPCC fifth assessment [11] also modified definitions for climate change vulnerability, renaming extrinsic factors as “hazard” and intrinsic factors “vulnerability” and “exposure.” However, these terms have yet to be adopted widespread in the conservation community [12], and so we have retained and adapted the 2007 IPCC definitions here.

1.2. Levels of Ecological Organization

Climate change vulnerability assessments may address different levels of ecological organization, such as species, communities, or landscapes. **Species** the most common focus for vulnerability assessment and consequently has received extensive attention in the literature [13, 14, 15, 16]. Based in autecology, trait-based approaches examine projected climate change where the species occurs, aspects of the genetic variation, natural history, physiology, and landscape context to assess sensitivity and adaptive capacity [12].

Assessments of **landscapes** often produce spatially explicit results for interpretation at regional scales. Evaluation of exposure may result in maps showing where climate stress is indicated to be greatest, whereas examination of the potential climate-change effects on disturbance regimes or invasive species can address aspects of sensitivity [17, 18, 19]. Adaptive capacity can be measured through examination of the heterogeneity of topography, moisture gradients, or microclimates under the assumption that more diverse landscapes provide more opportunities for organisms to find climate refugia than homogeneous ones [20].

Assessing the vulnerability of **natural community types** can provide a useful complement to both landscape and species assessments. Whereas landscape assessments indicate a high potential for climate-change impacts in certain regions, analysis of component communities is based on synecology and aims to more directly measure how climate change will impact species assemblages, ecological processes, structure and function, and is a next logical step to identify practical adaptation strategies where local management of vegetation is a common form of resource management.

Few examples exist for assessing vulnerability at the community level of organization. In two examples, [21] assessed vulnerability of European forests, and [22] assessed coastal communities, but both took conceptual approaches based on these socio-ecological systems at continental scales. They were concerned mainly about ecosystem outputs of goods and services and aiming to inform societal responses in forestry and fisheries sectors.

In one recent example focusing more squarely at natural community types themselves [23], 31 major vegetation types in California were assessed considering climate projections for 2100, sensitivity and adaptive capacity estimates of dominant species for each type, and spatial disruption that might inhibit species movement over time. They used a basin characterization model [24] to express climate change exposure. Working at a global scale, others [25] completed an assessment for terrestrial ecosystems and emphasized the need to address all three factors of exposure, sensitivity, and adaptive capacity.

Here we demonstrate a practical framework for climate change vulnerability assessment, focusing on natural community types themselves. We integrate measures of climate exposure with a series of measures for ecosystem resilience. Our intent is to complete analysis of terrestrial ecosystems or natural community types conceptualized at relatively local scales. Our approach facilitates the accumulation of results for many ecosystem types occurring across countries and continents. Results from this form of ecologically-based analysis can then be applied to climate change adaptation in a variety of socio-ecological contexts across the range of distribution of the natural community type.

This current assessment builds upon prior efforts to address major upland vegetation types, such as sagebrush shrubland and pinyon-juniper woodlands [8], with an initial focus on types that dominate lands managed by the Bureau of Land Management (BLM) in the conterminous western US. Several of these types also have extensive distributions in neighboring Mexico or Canada. Below we explain our methods with outputs of each step illustrated with one common sagebrush shrubland type, and then summarize findings for all 52 types that extend over 3.2 million km² of western North America.

2. Materials and Methods

2.1. Analytical Framework for Vulnerability Assessment

This index approach to vulnerability assessment aims to organize a series of sub-analyses in a coherent structure that will shed light on distinct components of vulnerability, so that each can be evaluated individually, or in combination. Our approach parallels related indexing of climate change vulnerabilities for species [26]. The components of climate change vulnerability are organized into primary categories of Exposure and Resilience. Resilience is further subdivided into subcategories of Sensitivity and Adaptive Capacity (Figure 1). For the HCCVI, these terms are defined as follows:

Exposure refers to the rate, magnitude, and nature of climate-induced stress on the community. Exposure encompasses trends in climate, such as changes in temperature and precipitation regimes, and any predicted effects on ecosystem-specific processes. Analyses of exposure consider change in climate variables themselves, or if possible, their resulting effects that cause increasing ecosystem stress, changing dynamic processes such as

wildfire or hydrological regimes, or coastal dynamics. This definition of exposure aligns closely with other common applications to climate change vulnerability assessments where changing climate is viewed as an extrinsic *driver* or *pressure* on the system of interest [12].

Resilience encompasses intrinsic factors that are likely to affect ecological responses of the natural community to changing climate. These include factors commonly described for ecological resilience, as defined by [27-29]. Walker et al. [29] defined ecological resilience as “the capacity of a system to absorb disturbance and reorganize while undergoing change and while still retaining essentially the same function, structure, identity, and feedbacks.” Under the broader measure of resilience, we include subcategories of Sensitivity and Adaptive Capacity.

- *Sensitivity* focuses on ecosystem stressors that are likely to affect ecological responses of the natural community to climate change. These emphasize human alterations to characteristic patterns and process that can be readily measured across the range of the community type, such as landscape fragmentation, effects of invasive species, or human alterations to other dynamic processes. These alterations are considered independent of climate change, but once identified, are likely to interact with changing climate.
- *Adaptive Capacity* includes natural characteristics that affect the potential for a natural community to cope with climate change. Analyses might consider the natural geophysical variability in climate for the type’s distribution. They might also consider functional roles that characteristic species play, such as the relative vulnerabilities to climate change of individual species that provide “keystone” functions, and relative taxonomic diversity within key functional groups (e.g., C3 vs. C4 - dominated communities) that characterize the type.

These definitions differ in part from those provided by the IPCC because here we emphasize synecology. Whereas sensitivity in species vulnerability is based more strongly on life history characteristics, natural communities encompass multiple species, each with differing tolerances. Here our sensitivity definition aim to better account for human alterations that affect the community composition and response to changing climate. Our adaptive capacity definition emphasizes natural characteristics of the community type – both biotic (species composition) and abiotic (geophysical), that may (or may not) contribute to resilience in the face of changing climate.

Drawing inspiration from Magness et al. [30] among others in structuring analyses with a logic model, the index scores combine information in two stages, with the first analyses gauging relative climate change resilience by combining scores from intrinsic factors of sensitivity and adaptive capacity. Climate change exposure and resilience are then considered together (combining extrinsic and intrinsic factors) to arrive at an overall gauge of climate change vulnerability (Figure 1).

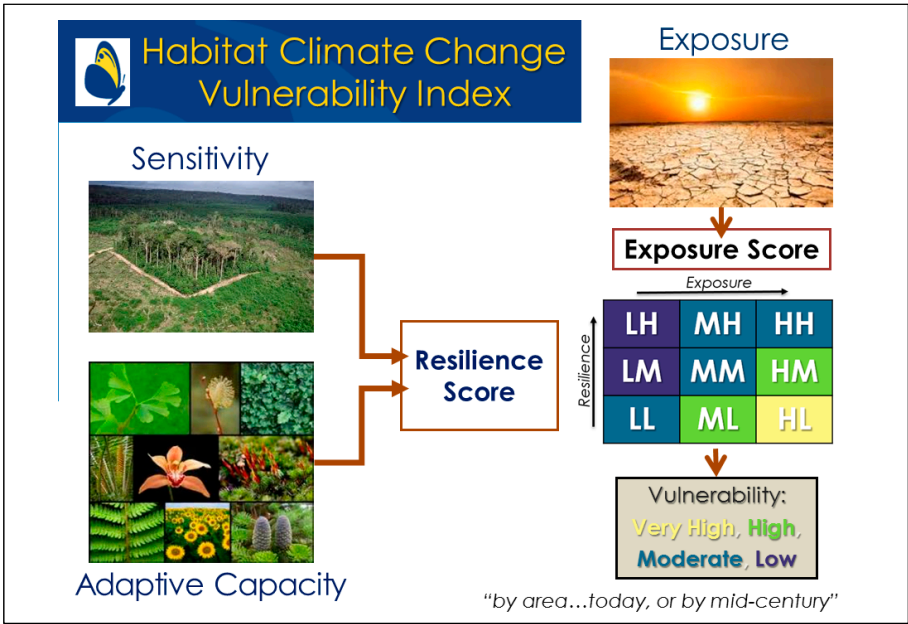


Figure 1. Analytical Framework for the NatureServe Habitat Climate Change Vulnerability Index.

The HCCVI uses component indicator values to ultimately arrive at a 4-level series of scores; i.e., Very High, High, Moderate, and Low vulnerability (Figure 1). These can be derived from relative measures of both Resilience and Exposure. When using quantitative data for measurement, numerical scores are normalized to a 0.0 to 1.0 scale, with 0.0 indicating ecologically “least favorable” conditions, and 1.0 indicating “most favorable” conditions. Quartiles of each continuous measure may be used as a starting point to determine the range falling into each of the Very High-Low categories (e.g., ≥ 0.75 = Low, 0.5-0.75 = Moderate, 0.25-0.50 = High, and ≤ 0.25 = Very High overall vulnerability). In this application of the framework, all indicators are weighted equally, and we used an arithmetic mean for their combination. Different circumstances and datasets for component measures, or different needs for reporting, may suggest alternative weightings or thresholds to delineate these categories. See Tonmoy et al. [31] for a review of issues associated with indicator treatment in vulnerability assessments. For this framework, we emphasize the need to standardized indicator data in some form to enable combination with other component analysis results.

Very High climate change vulnerability results from combining high exposure with low resilience (i.e., both trending toward “least favorable” scores). These are circumstances where climate change stress and its effects are expected to be most severe, and relative resilience is lowest. Ecosystem transformation is most likely to occur in these types.

High climate change vulnerability results from combining either high or moderate exposure with low or medium resilience. Under either combination, climate change stress is anticipated to have considerable impact.

Moderate climate change vulnerability results from a variety of combinations for exposure and resilience; initially with circumstances where both are scored as moderate. However, this also results where resilience is scored high, if combined with either high or medium exposure. Where both resilience and exposure are low, some degree of climate change vulnerability remains.

Low climate change vulnerability results from combining low exposure with high resilience (i.e., both trending toward “most favorable” scores). These are circumstances where climate change stress and its effects are expected to be least severe or absent, and relative resilience is highest.

195 2.2. Spatial and Temporal Dimensions for Documenting Vulnerability

196 Climate change vulnerability assessments need to be placed within explicit spatial bounds. For this effort,
197 we summarized component measurements by 100 km² hexagon for the distribution of each community type,
198 and then further summarized results within Level III of the Commission for Economic Cooperation (CEC)
199 ecoregions [32] for each type (Figure 2). These ecoregions provide an appropriate and consistent spatial structure
200 to systematically document climate change vulnerability at national or regional scales.

201 Similarly, climate change vulnerability assessments require a temporal dimension because the magnitude
202 of component measures could vary over time. For this effort, we based initial vulnerability measures on
203 emerging or “current” climate trends using observed climate data (as of 2014). Given both uncertainties
204 associated with climate projections, and the need to apply vulnerability assessments to decisions affecting
205 resources in upcoming decades, climate projections over the upcoming 50-year timeframe (e.g., between 2020
206 and 2070) provide subsequent realistic timeframes where climate trends can be estimated within acceptable
207 bounds of uncertainty. Therefore, we also assess vulnerability with the mid-21st century timeframe (2040-2069).

208 2.3. Ecological Classification and Distribution

209 For this project, we used NatureServe’s terrestrial ecological systems classification to define types [33]. The
210 advantage of using this classification system is that it represents an established classification of several hundred
211 upland and wetland types that have been extensively described and mapped by US federal and state resource
212 managers [34, 35] and extended into adjacent Canada, Mexico, and across Latin America and the Caribbean [36].
213 The expected pre-Columbian, or “potential,” distribution of each type, mapped at 90 m pixel resolution, was
214 used as the base distribution for assessment (Figure 2). Descriptions of each type can be found at
215 www.natureserveexplorer.org. We completed additional literature review to further document each type with
216 current knowledge of key ecological processes and stressors, and potential measures for assessing climate
217 change resilience.

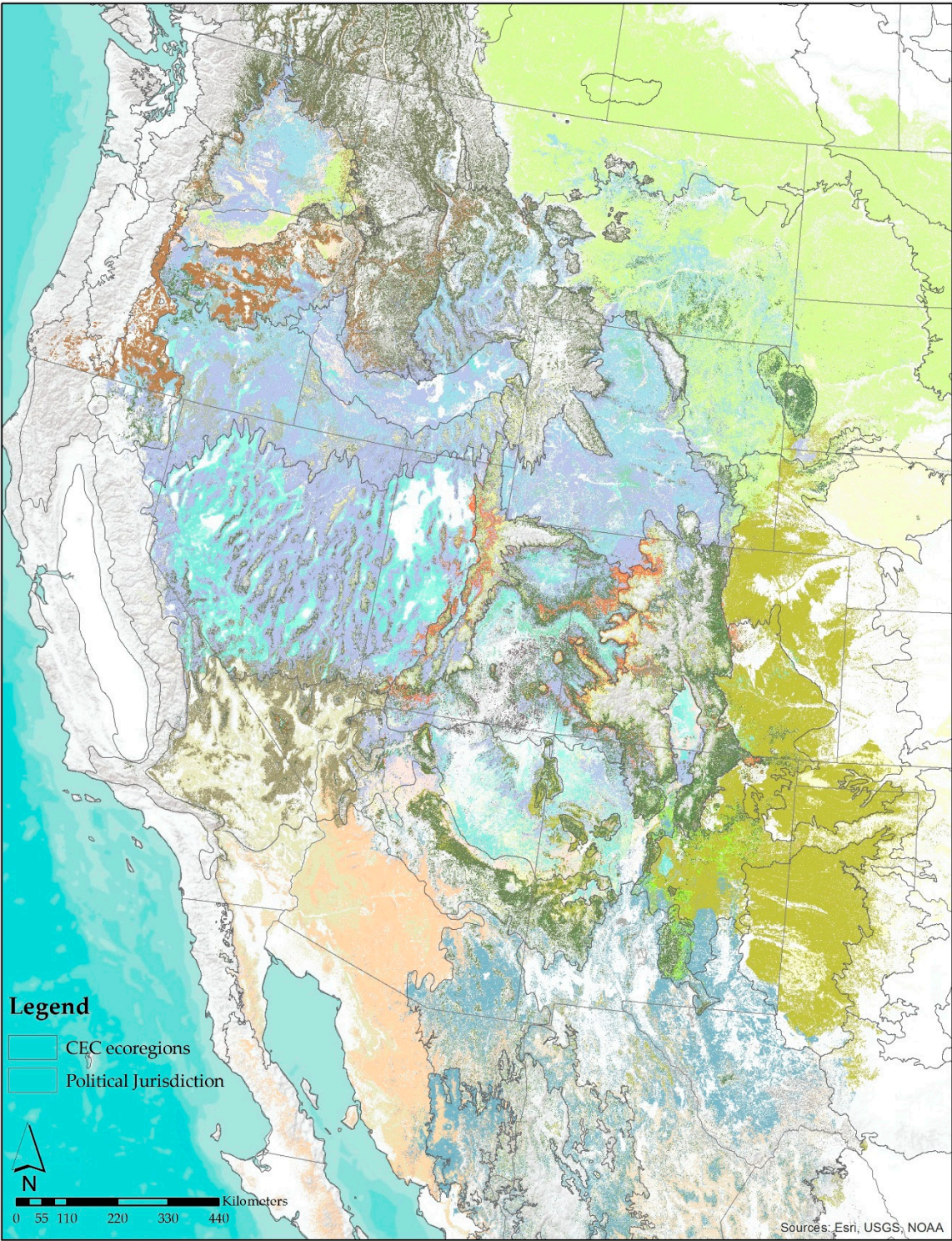


Figure 2. Mapped distributions of 52 ecological system types in western North America, centered on the USA, with boundaries of the Commission for Economic Cooperation CEC ecoregions [32] used for reporting on vulnerability.

Below, we discuss measures for climate change exposure and resilience applied to each type for this project. Appendix 1 includes a more detailed explanation of component measures used for ecosystem resilience. For

purposes of illustrating our methodology, we will use one example - Intermountain Basins Big Sagebrush Shrubland to depict component steps of the HCCVI framework (Figures 3-7).

2.4. Climate Change Exposure

We characterized the baseline climate niche for each vegetation type using historical climate data for the mid-20th century and the potential historical distribution of the type. This provides a baseline of suitable conditions from which to compare climate trends from subsequent time periods to clarify the significance of measurable change. The entire potential distribution for each community type was used to ensure that the entire range of possible suitable climate conditions was represented for each type. Using distributions that have been affected by land conversion could skew how we define climate suitability for a vegetation type and hence, how we measure climate exposure. Kling et al. [37] provide additional detail on component model design and performance.

For every grid cell of each vegetation type we calculated a composite index of climate change exposure as the sum of two distinct exposure measures: *suitability change*, which quantifies departure from the historical range of spatial climate variability across the geographic range of that vegetation type, and *typicality*, which quantifies departure from the historical range of year-to-year climate variability at a given pixel location. Each component index ranges from 0.0 to 0.5; these are summed to derive the final combined exposure index ranging from 0 (low climate exposure) to 1 (large climate departure).

Exposure measures were calculated based on changes in 19 bioclimatic variables derived from monthly temperature and precipitation variables [38]. Using a historical baseline period representing typical 20th century climate (1948–1980), we estimated exposure for both recent observed climate change (1981–2014) and projected future change (2040–2069, RCP 4.5). To maximize data quality across the full spatiotemporal extent of our analysis, we combined gridded climate datasets from several sources. Within the contiguous US, for the baseline and recent periods, temperature data were sourced from TopoWx [39] whereas precipitation data were sourced from PRISM version LT71 [40], both at 810 m resolution. Outside the US, and for the future within the US, all variables were based on 1 km² data from ClimateNA [41].

The *suitability change* metric uses niche modeling to estimate changes in a site’s climatic suitability for a given vegetation type for a given timeframe. For each vegetation type we fit a random forest [42] model using baseline means of the six most important (of 19) bioclimatic variables and 1,000 presence and absence locations sampled from within the rectangular bounding box of the type’s geographic extent. The top six differ among types, but six variables consistently explained a high proportion of model variability. Our choice of RF over alternative Generalized Linear Models (GLM), Generalized Additive Models (GAM), and MaxEnt algorithms, as well as our selection of variables for each type, was based on extensive model performance testing using spatial block cross-validation [43] to control the overfitting that comes from spatial non-independence. Variables were selected using recursive feature elimination [44], with six judged as the best empirical tradeoff between performance and parsimony. The fitted models were used to predict suitability for baseline, current, and future periods. Suitability change was then calculated by subtracting suitability measures across these time periods, and then rescaling these differences into a 0–0.5 index with 0 representing increasing or unchanged suitability, and 0.5 representing a large decrease in suitability.

The *typicality* metric compares a site’s current or future mean climate to the mean and yearly variation during a baseline period. For a given climate variable, typicality is calculated as the proportion of baseline years whose absolute deviation from the baseline mean (e.g., in degrees C) is larger than the absolute deviation of the

recent mean from the baseline mean. A value of 0 indicates no change, while a value of 1 indicates that the recent or future mean climate is more extreme, in either direction, than any individual year in the baseline period. For each vegetation type we calculated typicality for each of the same six climate variables used in the RF models, and then averaged them to derive a final typicality index. Final typicality values were divided by two to rescale them to the 0.0 to 0.5 range.

Typicality (0.0 to 0.5) and Change in Climate Suitability (0.0 to 0.5) measures were then added together to produce an overall exposure measure, resulting in per pixel values within a 0.0-1.0 range, with 1.0 indicating high climate exposure and 0.0 indicating no measurable climate exposure. These per-pixel values were subsequently inverted and averaged for one measure per 100 km² hexagon. Figure 3 illustrates one example where mid-21st century estimates of increasing or decreasing climate suitability for one major big sagebrush vegetation type. One can see where most substantial decreases in climate suitability for this type are concentrated in such places as the southeastern Washington, the Snake River Plain of Southern Idaho, Northwestern Nevada, the Big Horn Basin of Wyoming, and the Uinta Basin of Utah.

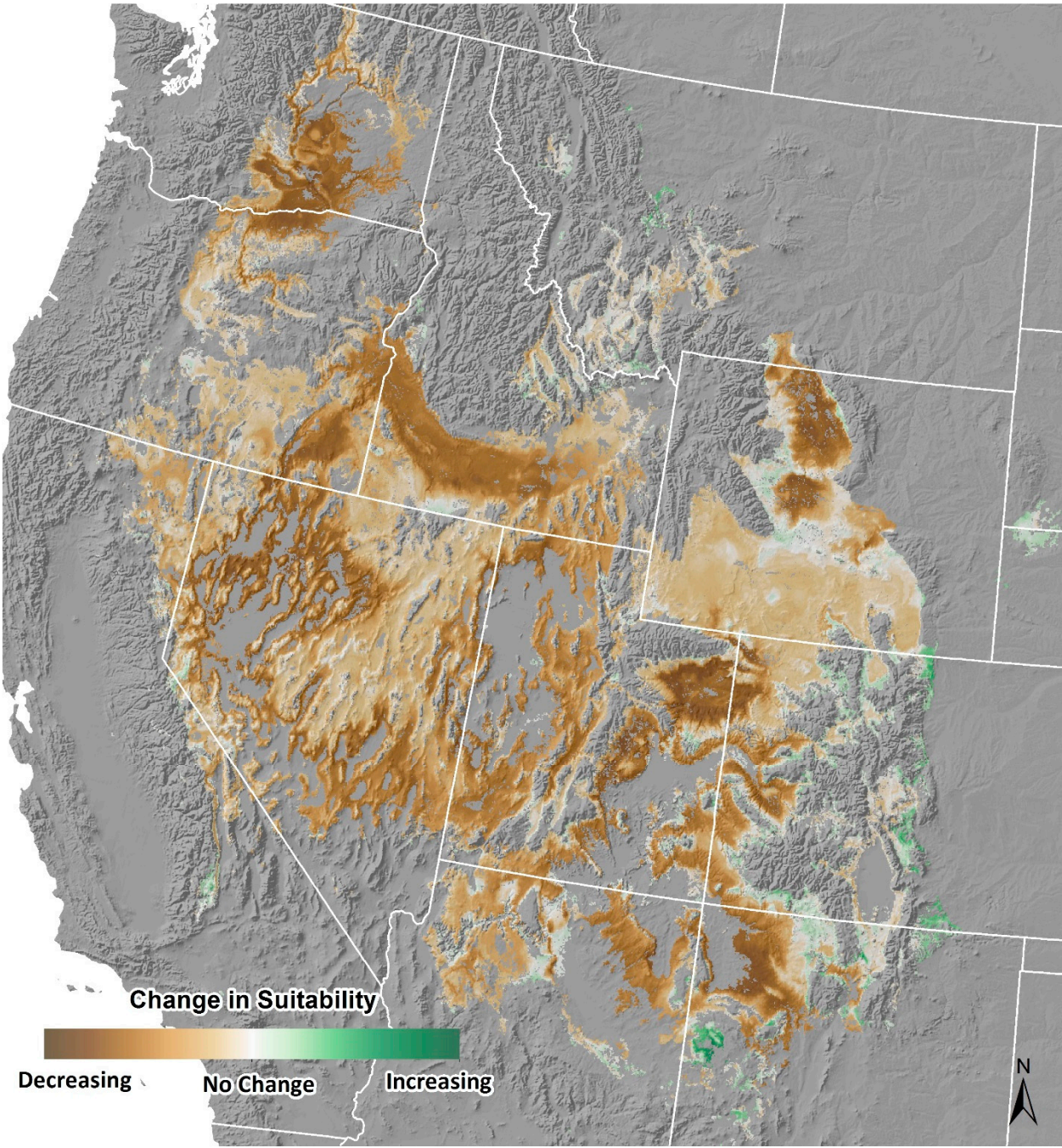


Figure 3. Change in Climate Suitability estimate for 2040-2070 timeframe for Intermountain Basins Big Sagebrush Shrubland.

Figure 4 depicts, for the same type, the result of combining typicality and change in suitability estimates, and then summarizing those per-pixel values to 100km² hexagons. Darker blue areas are forecasted to be least stressed (closer to 1.0) and yellow areas most stressed (closer to 0.0). This image indicates where a substantial proportion of the rangewide extent scores into the high-very high range of climate exposure.

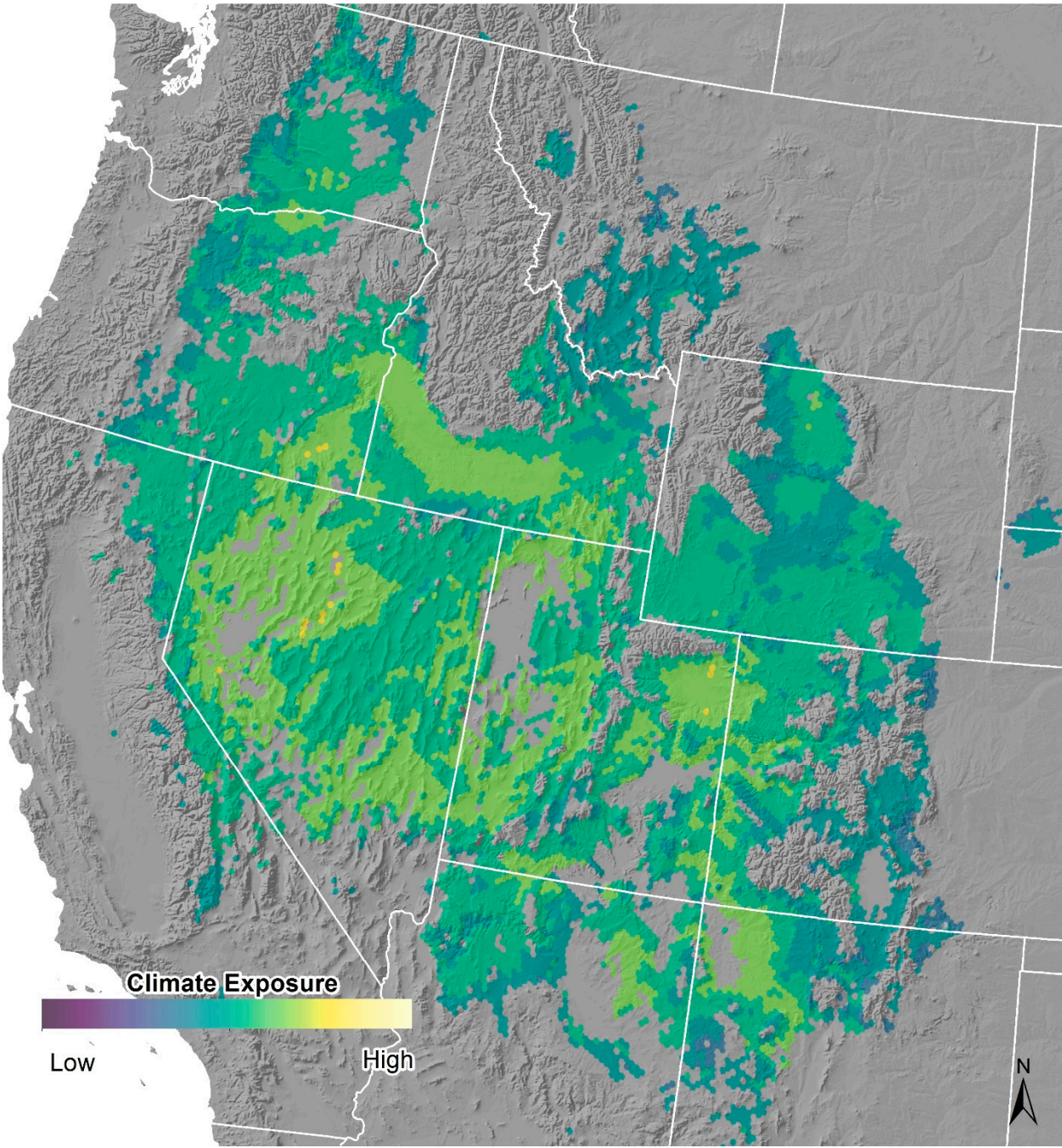


Figure 4. Climate Exposure estimate for 2040-2070 timeframe as index scores (i.e., low-high climate stress) summarized by 100km² hexagon for Intermountain Basins Big Sagebrush Shrubland.

2.5. Resilience – Ecosystem Sensitivity and Adaptive Capacity

Our measures of Resilience address predisposing conditions – such as extant ecosystem stressors, or natural abiotic or biotic characteristics of the type - that are likely to affect ecological responses of the natural community to changing climate. For example, if exposure measures indicate the need for component species to migrate toward other elevations or latitudes, but the natural landscape is fragmented by intensive land uses, the relative vulnerability of community types in that fragmented landscape could increase [45]. Similarly, the introduction of non-native species may displace native species and/or alter key dynamic processes such as wildfire regimes [46], and both could be exacerbated by climate change. These factors would describe relative climate change

sensitivity for a natural community type. This differs in approach from species vulnerability assessments, in that they tend to focus on life-history traits of individual taxa.

Inherent adaptive capacity of natural communities could consider the natural geophysical variability in climate for the type's distribution or the functional roles of species in the community type. Again, climate exposure might indicate a high level of climate stress, natural communities occurring within topographically flat landscapes with potential to retain little variability in microclimates could lack any built-in buffer effects for component species. Likewise, if certain ecosystem functions, such as nitrogen fixation, are limited to one or a few species that characterize the natural community, this could bring additional vulnerability due to the potential for their extirpation over time.

Upon completion of literature review of each type, and evaluation of available spatial data, we selected four primary indicators suitable for measuring relative sensitivity. To address effects of landscape fragmentation, we used a spatial model for landscape intactness or condition. Since many assessed types are known to be affected by invasive annual grass invasion, a model aiming to measure relative invasion severity was selected. Similarly, since most assessed types have a characteristic natural wildfire regime, a spatial model estimating fire regime departure was used. For forest types, measures of elevated risk from insects or diseases were identified. Three measures of adaptive capacity include both biotic and abiotic factors. Biotics factors included scoring of each type for diversity within identified key functional species groups and relative vulnerability of any identified "keystone" species. One measure of topo-climatic variability was applied for the distribution of each type.

In each of these cases involving spatial models, the model was overlain with the distribution of each vegetation type and scores were transformed to indicate a relative degree of sensitivity or adaptive capacity within a 0.0-1.0 range, again with 0.0 indicating most severely impacted, or least favorable, conditions while 1.0 indicating highest integrity, or apparently unaltered, conditions. These scores were each summarized to average values per 100 km² hexagon. Figure 5 depicts results from one sensitivity measure of landscape condition for Intermountain Big Sagebrush Shrubland. Darker blue areas indicate apparently least fragmented areas and yellow areas most fragmented. One can see where substantial portions of this distribution, such as in eastern Washington, across the Snake River Plain, and south along the Wasatch Front of Utah, this sagebrush type occurs in landscape highly fragmented by intensive land uses.

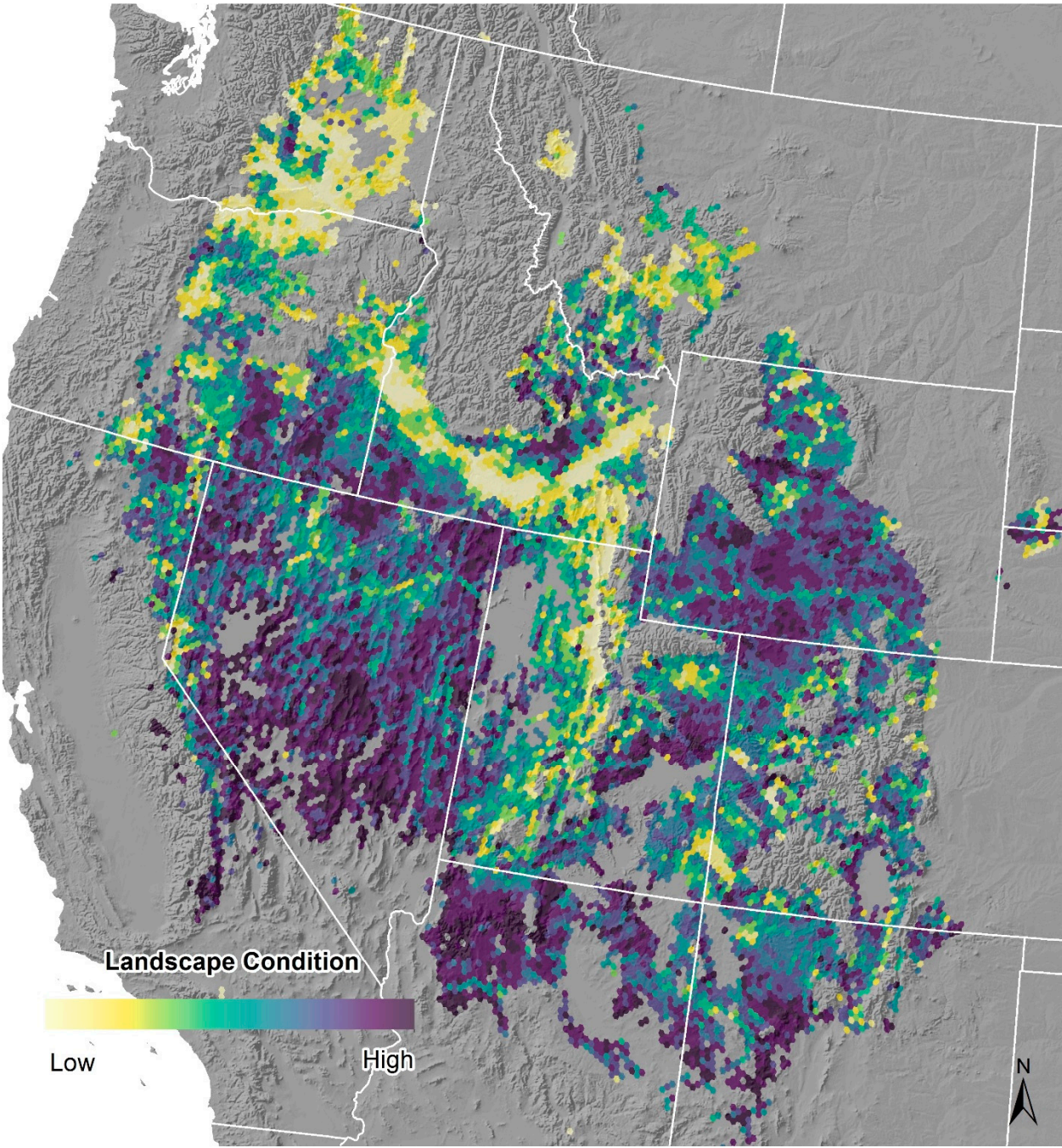


Figure 5. Sensitivity measure of landscape condition and index scores summarized by 100km² hexagon for Intermountain Basins Big Sagebrush Shrubland.

Again, Appendix 1 includes a detailed explanation of component measures used for ecosystem resilience.

2.6. Overall Resilience Scores

Overall resilience scores were derived by averaging results for each measure of Sensitivity and for Adaptive Capacity (Figure 1). This combination of up to four Sensitivity measures and up to three Adaptive Capacity measures were averaged together per 100km² hexagon to establish an overall score for resilience. As an example, Figure 6 depicts this overall measure for Intermountain Basins Big Sagebrush Shrubland. One can again see the general pattern of moderate to low resilience in the regional landscapes – such as the Snake River Plain of southern Idaho - where most intensive land use and effects of invasive plant species are concentrated.

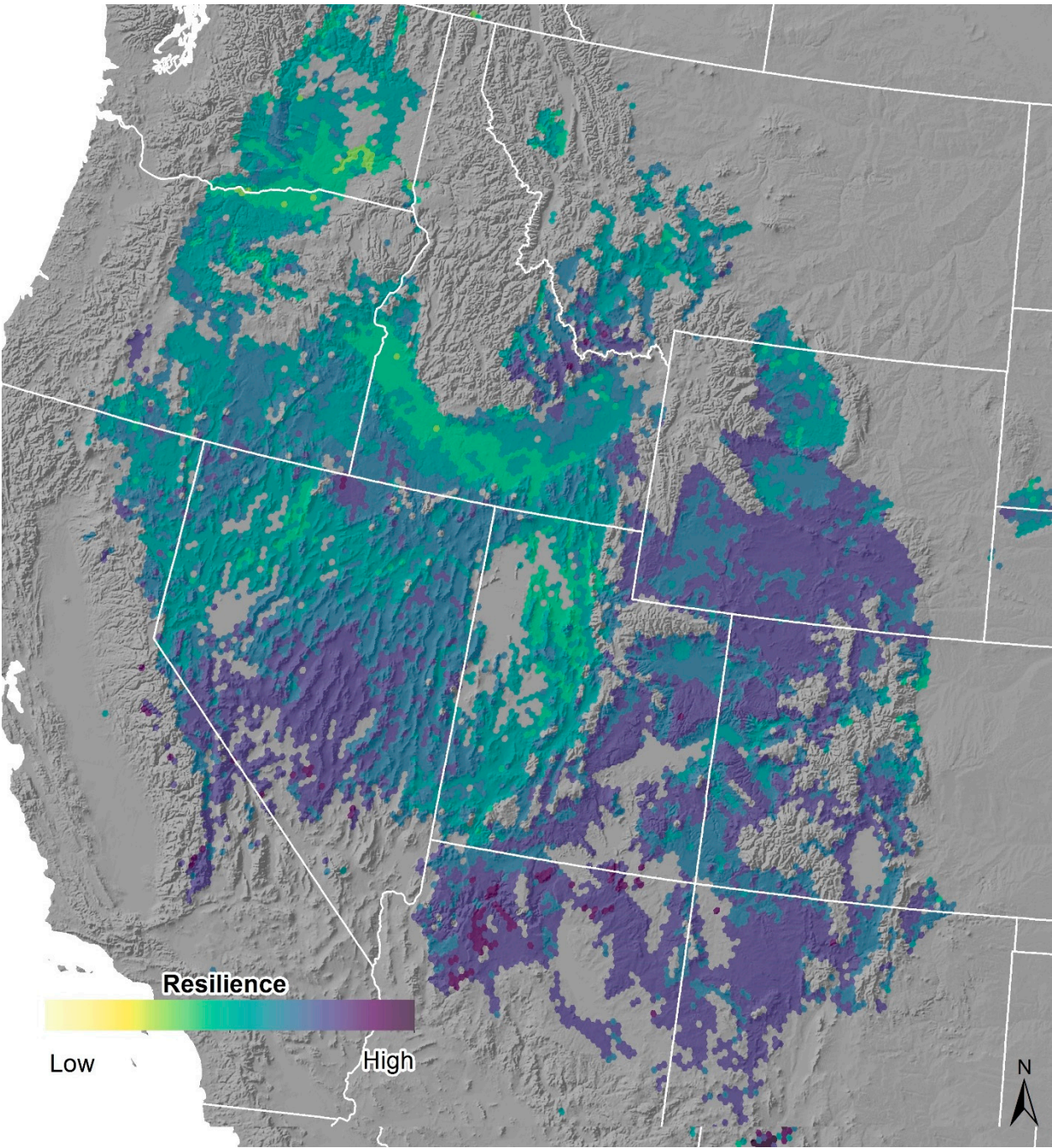


Figure 6. Overall Resilience measure summarized by 100km² hexagon for Intermountain Basins Big Sagebrush Shrubland.

2.7. Overall Climate Change Vulnerability

As noted in Figure 1, the combination of climate change exposure with resilience scores results in the relative vulnerability estimate for a given timeframe. Figure 7 depicts this result as projected for the mid-21st century for Intermountain Basins Big Sagebrush Shrubland. Patterns of vulnerability in this type vary across its distribution, as depicted with 100km² hexagons, and are driven strongly by climate change exposure measures, but are also substantially influenced by component measures of resilience (e.g., Figure 4). While per hexagon outputs are summarized along the 0.0-1.0 continuum, summary statistics for climate change vulnerability may be desirable with categories expressed as “Very High” “High” Moderate” or “Low” (Figure 1). Here, we used default break-points with quartiles of each continuous measure to determine the range falling into each of the Very High-Low

categories (≥ 0.75 = Low, $0.5-0.75$ = Moderate, $0.25-0.50$ = High, and ≤ 0.25 = Very High overall vulnerability). In the case of the Intermountain Basins Big Sagebrush Shrubland, nearly all its distribution is forecasted to fall within the “Moderate” vulnerability as of 2014 and in the “High” range of vulnerability by the mid-21st century.

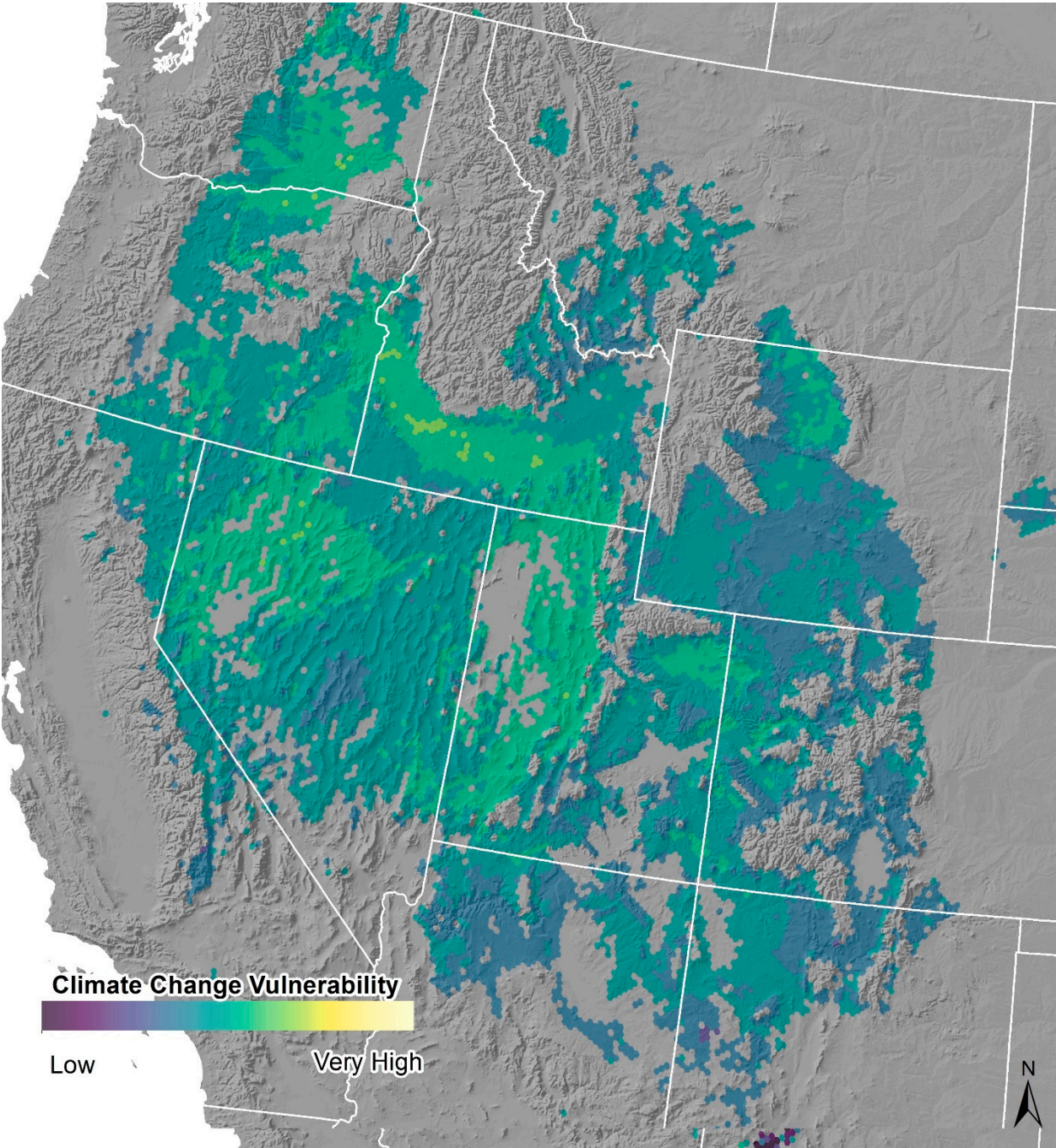


Figure 7. Overall Climate Change Vulnerability estimate for 2040-2070 summarized by 100km² hexagon for Intermountain Basins Big Sagebrush Shrubland.

3. Results

The summarized results for overall climate change vulnerability of the 52 assessed types are found in Table 1 and Appendix 2. Type-specific map, text, and tabular summary information is accessible within Appendix S1 in Supporting Information (also see: <https://databasin.org/galleries/6704179ca499490bafd2e9080df1908a>).

Results for the 52 vegetation types were arranged into 10 categories that reflect major ecological gradients of the region, from high-elevation “Cool Temperate Subalpine Woodlands” down to “Warm Desert Shrublands.” Table 1 includes a high-level summary of analysis scores and overall results for each vegetation type, with proportions of their respective distributions falling in each category (Low – Very High) of vulnerability. On the left are results pertaining to the current timeframe, using climate exposure measure from observed climate trends for the 1981- 2014 timeframe. On the right are results using climate exposure measures for the 2040-2069 timeframe.

As of 2014, 50 of 52 types scored within the Moderate vulnerability score for >50% of the rangewide extent. Seven types scored as High vulnerability with >10% of the rangewide extent in this category. No type had >1% of their range scoring in extreme of Very High vulnerability. Of those scoring currently as High Vulnerability, Sonora-Mojave Creosotebush Desert Scrub scored the highest, with 74% of its area scoring as highly vulnerable. Other types currently scoring High are found in warm deserts (Apacherian-Chihuahuan Semi-Desert Grassland and Steppe, Sonoran Paloverde-Mixed Cacti Desert Scrub, Chihuahuan Mixed Desert and Thornscrub, and western Great Plains temperate shrubland and steppe landscapes (Northwestern Great Plains Mixedgrass Prairie, Rocky Mountain Foothill Limber Pine -Juniper Woodland, Western Great Plains Sand Prairie, Northwestern Great Plains Shrubland) (Table 1).

The primary result of considering projected climate exposure for the mid-21st century was an apparent overall shift in vulnerability scores from Low-Moderate to High ranges (Table 1) for nearly all 52 vegetation types. By the mid-21st century, all but 19 types face high climate change vulnerability with >50% of the area scoring in these categories. This change in overall vulnerability is of course driven by more severe climate exposure measures (into High and Very High categories). Fourteen types scored with over 90% of their distribution in the high vulnerability category (Table 1).

Table 1. Terrestrial ecological system types assessed for climate change vulnerability, with *percentage of mapped area* that was scored from Low to Very High Vulnerability using either current climate exposure or those from climate projections to the mid-21st century. Types are organized by elevation-based category and subsequently sorted based on approximate historical extent.

Climate Change Vulnerability	Potential/ Historic Extent (Km2)	Current Vulnerability				Mid-21st Century Vulnerability			
		Low	Mod	High	Very High	Low	Mod	High	Very High
		≥0.75	≥0.5 & <0.75	≥0.25 & <0.5	<0.25	≥0.75	≥0.5 & <0.75	≥0.25 & <0.5	<0.25
Terrestrial Ecological System Types		(% area)	(% area)	(% area)	(% area)	(% area)	(% area)	(% area)	(% area)
Cool Temperate Subalpine Woodlands									
Northern Rocky Mountain Subalpine Woodland and Parkland	64,645	5%	94%				59%	41%	
Rocky Mountain Lodgepole Pine Forest	16,068	17%	83%	0.05%			21%	79%	0.2%
Aspen & Mountain Mahogany Forests and Woodlands									
Inter-Mountain Basins Aspen-Mixed Conifer Forest and Woodland	27,929	23%	77%				24%	76%	
Rocky Mountain Aspen Forest and Woodland	24,103	20%	80%	0.02%		0.01%	81%	19%	
Inter-Mountain Basins Curl-leaf Mountain-mahogany Woodland and Shrubland	7,241	53%	47%				32%	68%	
Montane Conifer Forests and Woodlands									
Northern Rocky Mountain Dry-Mesic Montane Mixed Conifer Forest	129,039	5%	95%	0.04%			94%	6%	
Middle Rocky Mountain Montane Douglas-fir Forest and Woodland	25,585	14%	86%				37%	63%	

Climate Change Vulnerability	Potential/ Historic Extent (Km2)	Current Vulnerability				Mid-21st Century Vulnerability			
		Low	Mod	High	Very High	Low	Mod	High	Very High
		≥0.75	≥0.5 & <0.75	≥0.25 & <0.5	<0.25	≥0.75	≥0.5 & <0.75	≥0.25 & <0.5	<0.25
		(% area)	(% area)	(% area)	(% area)	(% area)	(% area)	(% area)	(% area)
Terrestrial Ecological System Types									
Southern Rocky Mountain Dry-Mesic Montane Mixed Conifer Forest and Woodland	15,430	1%	99%				3%	97%	
Southern Rocky Mountain Mesic Montane Mixed Conifer Forest and Woodland	8,961	3%	97%				5%	95%	
Ponderosa Pine Woodlands and Savannas									
Northern Rocky Mountain Ponderosa Pine Woodland and Savanna	49,197	11%	79%			0.002%	63%	22%	0.1%
Southern Rocky Mountain Ponderosa Pine Woodland	38,713		98%	2%			62%	38%	
Northwestern Great Plains-Black Hills Ponderosa Pine Woodland and Savanna	18,193		93%	7%		0.3%	100%	0%	
California Montane Jeffrey Pine-(Ponderosa Pine) Woodland	13,264	2%	98%	0.01%			1%	99%	0.3%
Southern Rocky Mountain Ponderosa Pine Savanna	12,892	1%	99%				10%	90%	
East Cascades Oak-Ponderosa Pine Forest and Woodland	470		100%				3%	97%	
Pinyon and Juniper Woodlands									
Madrean Pinyon-Juniper Woodland	44,866	0.04%	97%	3%		0.03%	85%	7%	
Colorado Plateau Pinyon-Juniper Woodland	39,898	0.1%	100%				58%	42%	
Great Basin Pinyon-Juniper Woodland	22,304	0.1%	100%	0.2%			70%	30%	
Southern Rocky Mountain Pinyon-Juniper Woodland	10,466	0.2%	100%				45%	55%	

Climate Change Vulnerability	Potential/ Historic Extent (Km2)	Current Vulnerability				Mid-21st Century Vulnerability			
		Low	Mod	High	Very High	Low	Mod	High	Very High
		≥0.75	≥0.5 & <0.75	≥0.25 & <0.5	<0.25	≥0.75	≥0.5 & <0.75	≥0.25 & <0.5	<0.25
		(% area)	(% area)	(% area)	(% area)	(% area)	(% area)	(% area)	(% area)
Terrestrial Ecological System Types									
Southern Rocky Mountain Juniper Woodland and Savanna	10,382		100%				38%	62%	
Columbia Plateau Western Juniper Woodland and Savanna	7,784	3%	95%	3%			28%	72%	
Inter-Mountain Basins Juniper Savanna	1,531		99%	1%			1%	99%	
Rocky Mountain Foothill Limber Pine-Juniper Woodland	1,330	5%	85%	10%			16%	84%	
Colorado Plateau Pinyon-Juniper Shrubland	206		95%	5%			38%	62%	
Cool Temperate Grasslands									
Northwestern Great Plains Mixedgrass Prairie	620,860		68%	32%		3%	74%	24%	
Western Great Plains Sand Prairie	107,307	0.003%	90%	10%			2%	98%	
Columbia Plateau Steppe and Grassland	23,913	0.09%	100%	0.04%			48%	52%	
Inter-Mountain Basins Semi-Desert Grassland	22,532	0.03%	100%	0.07%			11%	89%	
Northern Rocky Mountain Lower Montane-Foothill-Valley Grassland	19,327	1%	97%	1%			67%	33%	
Southern Rocky Mountain Montane-Subalpine Grassland	3,054	0.4%	99%	0.2%			3%	97%	
Cool Semi-desert & Temperate Shrubland and Steppe									
Inter-Mountain Basins Big Sagebrush Shrubland	282,439	2%	97%	0.3%		0.01%	73%	27%	
Inter-Mountain Basins Big Sagebrush Steppe	182,114	2%	97%	0.1%			35%	65%	
Inter-Mountain Basins Montane Sagebrush Steppe	83,707	8%	92%	0.010%			70%	30%	
Great Basin Xeric Mixed Sagebrush Shrubland	62,126	7%	93%	0.003%			8%	92%	

Climate Change Vulnerability	Potential/ Historic Extent (Km2)	Current Vulnerability				Mid-21st Century Vulnerability			
		Low	Mod	High	Very High	Low	Mod	High	Very High
		≥0.75	≥0.5 & <0.75	≥0.25 & <0.5	<0.25	≥0.75	≥0.5 & <0.75	≥0.25 & <0.5	<0.25
		(% area)	(% area)	(% area)	(% area)	(% area)	(% area)	(% area)	(% area)
Terrestrial Ecological System Types									
Mojave Mid-Elevation Mixed Desert Scrub	54,768	1%	99%	0.3%			19%	81%	
Columbia Plateau Low Sagebrush Steppe	21,361	2%	97%	0.1%			48%	52%	
Rocky Mountain Gambel Oak-Mixed Montane Shrubland	19,637	0.0%	100%	0.01%			3%	96%	0.47%
Northwestern Great Plains Shrubland	9,786		70%	30%			36%	63%	0.48%
Colorado Plateau Blackbrush-Mormon-tea Shrubland	8,366		100%				13%	87%	
Rocky Mountain Lower Montane-Foothill Shrubland	8,020	0.1%	100%	0.4%			4%	96%	0.002%
Colorado Plateau Mixed Low Sagebrush Shrubland	4,250	0.01%	100%	0.4%			6%	94%	
Columbia Plateau Scabland Shrubland	3,775		85%	15%			5%	95%	
Wyoming Basins Dwarf Sagebrush Shrubland and Steppe	1,107		96%	4%			5%	95%	
Mixed Salt Desert Scrub & Greasewood									
Inter-Mountain Basins Mixed Salt Desert Scrub	95,681	2%	96%	2%			57%	43%	
Inter-Mountain Basins Greasewood Flat	58,269	0.005%	98%	2%			86%	14%	
Inter-Mountain Basins Mat Saltbush Shrubland	10,677		99%	1%			50%	50%	
Warm Temperate Grasslands & Semi-Desert Grasslands									
Western Great Plains Shortgrass Prairie	258,868	13%	87%	0.05%			84%	16%	
Apacherian-Chihuahuan Semi-Desert Grassland and Steppe	249,336		84%	16%		0.001%	59%	41%	
Warm Desert Shrublands									
Sonoran Paloverde-Mixed Cacti Desert Scrub	131,505		63%	37%	0.02%		58%	42%	

388
389

		Current Vulnerability				Mid-21st Century Vulnerability			
		Low	Mod	High	Very High	Low	Mod	High	Very High
Climate Change Vulnerability	Potential/ Historic	≥0.75	≥0.5 & <0.75	≥0.25 & <0.5	<0.25	≥0.75	≥0.5 & <0.75	≥0.25 & <0.5	<0.25
Terrestrial Ecological System Types	Extent (Km2)	(% area)	(% area)	(% area)	(% area)	(% area)	(% area)	(% area)	(% area)
Chihuahuan Creosotebush Desert Scrub	92,472		86%	14%			72%	28%	0.05%
Sonora-Mojave Creosotebush-White Bursage Desert Scrub	91,703		26%	74%	0.001%		14%	84%	2%
Chihuahuan Mixed Desert and Thornscrub	21,071		89%	11%			42%	57%	

Appendix 2 provides a more detailed breakdown for results, summarizing proportional rangewide area by type scoring for climate exposure (both current and mid-21st century timeframes) and for overall resilience and its component scores for sensitivity and adaptive capacity; each with proportions of rangewide extent falling into each of the four binned categories for relative vulnerability. Again, one can see the relative contribution of elevated climate change exposure in the mid-21st century timeframe, with 17 types having over 90% of their range within either the high or very high vulnerability ranges for exposure at mid-21st century. Here we also see additional explanation of overall vulnerability scores coming from component measures for resilience. Overall resilience scores were proportionally often in moderate vulnerability, but with 10 types having >50% extent in high vulnerability from their resilience scores. Overall resilience scores appear to be most strongly driven by specific measures under both sensitivity and adaptive capacity. While most proportional area of each type scored in low to moderate ranges for the combined sensitivity measures, most scored in the high range for adaptive capacity.

Components of sensitivity reflect common circumstances for these types found throughout some of the more remote and undeveloped landscape in the western United States; but that still include substantial areas impacted by past and current ecological stressors. Relative vulnerability contributed by degraded landscape condition varies considerably, with most area by type falling in the low to moderate ranges. For rangewide summary statistics, seven of these vegetation types include >50% of their area in the high to very high vulnerability ranges. Fire regime departure is a substantial contributor to vulnerability, and 16 types include >50% of their area in the high to very high vulnerability ranges. Invasive plant models for this analysis primarily pertained to cool desert shrublands and cool temperate grassland types. Several sagebrush and related vegetation types include substantial areas that are indicated as being in the high or very high vulnerability ranges (e.g., Columbia Plateau Western Juniper Woodland and Savanna - 54%, Mojave Mid-Elevation Mixed Desert Scrub - 33%, Inter-Mountain Basins Big Sagebrush Steppe - 30%, Inter-Mountain Basins Big Sagebrush Shrubland - 27%), and the effects of invasive plants interact with alterations to wildfire regimes in most of these vegetation types. Vulnerability stemming from forest insect and disease risk applied only to forest and woodland types, and from a rangewide perspective, appear to have contributed less than other factors, but for some types, rather substantial area was measured within the moderate vulnerability range (e.g., Southern Rocky Mountain Mesic Montane Mixed Conifer Forest and Woodland - 32%, California Montane Jeffrey Pine-(Ponderosa Pine) Woodland - 28%).

Most notably among adaptive capacity measures, the topo-climatic variability is naturally quite low for all but some of the montane forest and woodland types in this region, as most desert shrublands and temperate grasslands occupy vast landscapes of relatively flat to gently rolling topography. Therefore, for most types, most of their area scored within the high to very high vulnerability ranges. Also, for many of these types that dominate the arid interior of western North America, inherent species diversity is low and recovery from surface disturbance is relatively slow where compared with montane forests and shrublands. Functional species groups identified often centered on nitrogen fixation, soil stability, and other common characteristics of vegetation in semi-arid regions. Relatively low within-type diversity in one or more functional species group led to low scores for this component of climate change vulnerability. As a result, 14 types scored within the very high vulnerability range, while most others scored in the moderate range. Interestingly, only one “keystone” species was identified associated with any of these 52 assessed types. The black-tailed prairie dog (*Cynomys ludovicianus*) was associated with mixedgrass and shortgrass prairie types, but its individual climate change vulnerability was considered in to be relatively low.

While the outputs of the HCCVI are most relevant and applicable to analysis of individual ecosystem types, and factors contributing to their relative vulnerability are differentially expressed across their type distribution, one can also combine mapped results for major types to detect patterns of relative vulnerability. Figure 8 depicts the combined results for all 52 types assessed here, by their 100 km² hexagon summary unit. Since this set of types represent the predominant vegetation at lower and middle elevations across the region, they can summarize overall patterns of ecosystem type vulnerability for the region. With an extreme of 24 types occurring within a given hexagon, the figure depicts three ways of summarizing vulnerability patterns, using (left) the lowest (least vulnerable) scoring type per hexagon, (center) the highest (most vulnerable) scoring type, and (right) the average score of all types present. These views highlight a range of moderate to very high relative vulnerability across key regional landscapes, such as in the Mojave Desert, Columbia Basin, the Great Salt Lake Basin, the Colorado Front Range, the Nebraska Sandhills, and west Texas.

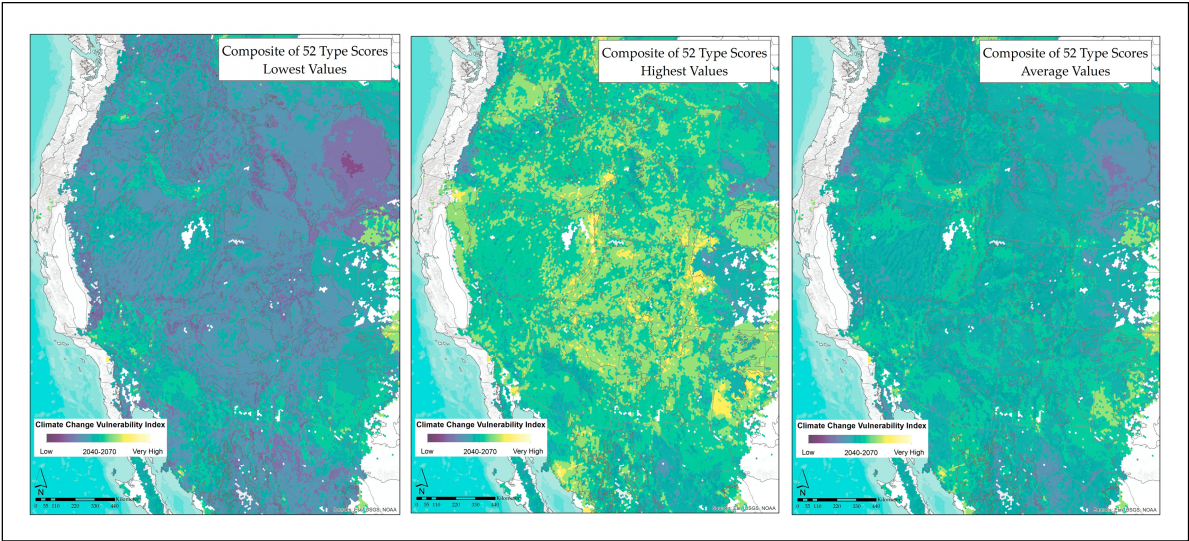


Figure 8. Overall Climate Change Vulnerability estimate for 2040-2070 summarized by 100km² hexagon for all 52 assessed types, with a minimum of 1 type and a maximum of 24 types occurring within each hexagon, displayed scores include the least, most, and average vulnerability scores (left to right).

4. Discussion

We demonstrated an analytical framework to document relative climate-change vulnerabilities among major upland vegetation types that dominate desert and montane forests of the interior western USA. While many of these types are well represented in protected and managed public lands [47] that does not shield them from effects of climate change. By integrating available information, we identified types and places where signals of climate change stress are emerging, and where they can be foreseen over upcoming decades. This effort drew inspiration from many similar efforts on the overall structure, measurements used, and available data, but here our analysis is based in synecology, and facilitates practical application of results to vegetation at scales commonly addressed in biodiversity conservation and natural resource management. By applying a systematic framework to climate change vulnerability assessment, it generates actionable information targeted to both policy-makers and land managers in support of natural resource conservation decisions.

The HCCVI could be considered an Indicator Based Vulnerability Assessments (IBVAs), where a series of indicators for exposure or resilience are measured and then combined to approximate relative climate change vulnerability. Tonmoy et al. [31] completed a meta-analysis of vulnerability assessments and provide useful insights into strengths and weaknesses in methods for IBVA design and indicator aggregation. Our HCCVI

could be categorized as a hybrid IBVA that combines simulation modeling (e.g., for project climate conditions) with the present value of other indicators (e.g., for sensitivity and adaptive capacity measures) to arrive at a vulnerability score. We normalized each indicator and used an arithmetic mean for their combination. This approach to aggregation requires a high level of independence among component indicators and considerable knowledge of the relationship between each indicator and overall vulnerability. While these vegetation types are well understood and documented, and indicators used here reflect high-quality data, we still cannot presume all assumptions have been fully met with regards to aggregation rules.

In contrast to some of the relatively few other assessment methods for natural community types, we have limited our scope to well-described types characterized by native vegetation. Where others have chosen to assess socio-ecological systems [21, 22], the level of uncertainty increases considerably. While we acknowledge the relative utility of formally integrating human dimensions into ecosystem concepts, we feel that the introduced uncertainty is considerable. Our approach aims to limit this uncertainty by first assessing the natural community type, and then in subsequent steps, these outputs can be brought together with human dimensions affecting a given landscape of interest.

Also, in contrast to many other assessments, here we have emphasized measuring climate exposure along a trend line from the mid-20th century baseline through recent conditions, and into the future time frame of the upcoming decades. This trend-based approach helps to address the considerable uncertainty associated with climate projections by first grounding “current” measures from already observed climate change, and then by focusing on the upcoming decades through the mid-21st century.

One of the most significant methodological challenges to our framework is the application of the climate exposure measure. We anticipate much additional effort to better tie climate trend data more directly to driving ecological processes (e.g., biomass productivity, hydrologic regime, fire regime) to provide more robust predictions. Similarly, some factors affecting resilience will change over upcoming decades, and so the ability to create reliable forecasts of changing conditions, such as those resulting from future development patterns or invasive species spread, will add precision to overall resilience forecasts. Other challenges identified with this framework included the treatment of functional species groups and ‘keystone’ species. While both concepts for vulnerability measures are desirable and likely provide important contributions, limits to current knowledge become apparent when one attempts to identify and assess species for each category. In addition, locating data sets for component measures that span the range of a given type will remain a challenge. A systematic and regional approach such as this that we have taken can highlight needs for investments in data sets critical to addressing climate change.

This framework is intended for widespread application and accumulation of results for many vegetation types. The summary spatial units chosen, including 100km² hexagons and ecoregion units, appear to be practical for this purpose. Some of the input raster layers (30-800m pixel resolution) are also quite useful for subsequent applications to decision making.

These outputs are also compatible with efforts to gauge the rangewide conservation status or risk of rangewide ecosystem collapse. For example, under the IUCN Red List of Ecosystems framework [48, 49], Criterion C3 addresses environmental degradation over a 50-year timeframe including the current time period where degradation is expressed in terms of relative proportional extent of and ecosystem type affected at varying levels of relative severity. Since our results can express relative severity (i.e., very high-low climate change vulnerability) in 100km² increments across the rangewide extent of the type, they could apply directly to measuring C3 for red listing.

5. Conclusions

While traditional natural resource management has tended to be ‘retrospective’ – utilizing knowledge of past and current conditions to inform today’s management actions – conservation professionals are increasingly required to more rigorously forecast future conditions. This forecasting strives to determine the nature and magnitude of change likely to occur, and then translate that knowledge to current decision-making timeframes. It is no longer sufficient to assess “how are we doing?” and then decide what actions should be prioritized for the upcoming 15-year management plan. One must now ask “how is it changing, and by when?” and then translate that knowledge back into actions to take within one or more planning horizons.

Climate change adaptation includes actions that enable ecosystems and people to better cope with or adjust to changing conditions. Some have categorized major strategies into three areas, including resistance, resilience, and facilitated transformation [50-52]. Where vulnerability assessments indicate low vulnerability over upcoming decades, management can concentrate on resistance-based strategies; aiming to prevent ecosystem degradation. Where moderate to high vulnerability is indicated, strategies focused on restoring resilience are the priority. Where vulnerability is indicated as being very high over upcoming decades, options for facilitated transformation need to be identified.

Results of this analysis suggest adaptation strategies that suit the character of the vegetation type. For example, as identified in Table 1, warm desert shrublands and semi-desert grassland types already score into the high vulnerability range. It would be prudent for planners and managers to evaluate current landscape patterns and identify zones where they can anticipate plant invasions from neighboring vegetation [53]. Where degraded from prior land uses, restoration of native herb diversity and nitrogen fixing taxa are also needed. Monitoring for pollinator population trends, invasive plant expansion, and shrub regeneration, are also increasingly urgent.

Further north and upslope, pinyon-juniper woodlands currently tend to score in the low-moderate range of vulnerability, but by mid-century, they score in the moderate to high range of vulnerability. Actions to maintain or restore resilience in these forests are needed [54]. These could include protection of remaining “old growth” stands while restoring natural wildfire regimes and tree canopy densities in surroundings. Over upcoming decades, as temperature and precipitation patterns change, models of wildfire regimes will need to be updated and customized to local conditions. Monitoring for invasive plant expansion, such as from cheatgrass (*Bromus tectorum*), effects of drought stress, and tree regeneration will all increase in urgency.

Looking out to the upcoming decades towards the mid-21st century, nearly all types assessed here would benefit from a set of resilience-based strategies, so these investments in the near term may limit needs for more extreme measures later in the century.

We believe that our analytical framework illustrated here provides a practical basis for accumulating spatially-explicit scores for climate change vulnerability of major vegetation types. It also includes sufficient specificity to inform adaptive management responses. Continued investment in this type of analysis, encompassing more types and across national and international scales, should yield benefits to natural resource managers and conservation practitioners as they navigate the challenges posed by climate change over the upcoming decades.

Supplementary Materials: **The following are available online at**
<https://databasin.org/galleries/6704179ca499490bafd2e9080df1908a>

Appendix S1: Technical Reports include type-specific map, text, and tabular information accessible on

Author Contributions: Conceptualization, Patrick J. Comer and Healy Hamilton; Data curation, Jon C. Hak, Stephanie Auer and Regan Smyth; Formal analysis, Patrick J. Comer, Jon C. Hak, Stephanie Auer and Matthew Kling; Funding acquisition, Patrick J. Comer and Healy Hamilton; Investigation, Patrick J. Comer, Jon C. Hak, Marion S. Reid, Stephanie Auer and Keith Schulz; Methodology, Patrick J. Comer, Jon C. Hak, Marion S. Reid, Stephanie Auer, Healy Hamilton and Matthew Kling; Project administration, Patrick J. Comer and Marion S. Reid; Software, Jon C. Hak and Stephanie Auer; Supervision, Healy Hamilton; Validation, Patrick J. Comer, Jon C. Hak, Stephanie Auer, Regan Smyth and Matthew Kling; Visualization, Patrick J. Comer, Marion S. Reid, Stephanie Auer, Healy Hamilton, Regan Smyth and Matthew Kling; Writing – original draft, Patrick J. Comer; Writing – review & editing, Jon C. Hak, Stephanie Auer, Healy Hamilton and Matthew Kling.

Funding: This research was funded by the USDOJ Bureau of Land Management, cooperative agreement number L13AC00243

Acknowledgments: We wish to acknowledge the support of U.S. Department of Interior agencies, primarily the Bureau of Land Management and U.S. Fish and Wildlife Service, who have provided resources for this research. Numerous experts have provided review and insights throughout the design of this method and its implementation. Geoff Hammerson conducted climate change vulnerability assessments for animal species involved in this research. Patrick McIntyre provided technical interpretation for some vegetation types. and Don Faber-Langendoen provided editorial review. Mary Harkness and Kristin Snow provided essential support for database design and management.

Conflicts of Interest: The authors declare no conflict of interest. The funders had no role in the design of the study; in the collection, analyses, or interpretation of data; in the writing of the manuscript, or in the decision to publish the results.

Appendix 1: Methods Detail for Resilience Measures

Individual measures for resilience were applied to each type. This appendix provides detailed explanation of procedures used for each measurement.

Resilience – Ecosystem Sensitivity

Below are described specific measures of sensitivity, including Landscape Condition, Invasive plant species, Fire Regime Departure, and Forest insect and disease risk.

Sensitivity - Landscape Condition

Since human land uses, such as built infrastructure for transportation, urban development, industry, agriculture and other vegetation alterations, are depicted in maps that are periodically updated, they can be used in spatial models to make inferences about the status and trends in human-induced stress and ecological condition of ecosystems and landscapes at regional to global scales [55-57]. The spatial model of landscape condition used here [58] built on a growing body of published methods and software tools for ecological effects assessment and spatial modeling; all of which aim to characterize relative ecological condition of landscapes [59-61]. The model uses regionally available spatial data to transparently express user knowledge regarding the relative effects of land uses on natural ecosystems.

Values close to 1.0 indicate almost no measurable ecological impact from the land use at a given pixel. As described in [58], model parameters were calibrated, and subsequently validated using tens of thousands of field observations indicating relative ecological condition. The result is a map surface that provides relative index scores per pixel between 0.0 and 1.0. Calibration of this model against over 50,000 field occurrence ranked as A=excellent, B=good, C=fair, and D=poor condition were used to identify thresholds in the 0.0-1.0 scale for applications. In this instance, we used one standard deviation above the mean of the index value for the D occurrences to determine the C. vs. D threshold. The overall threshold value breaks are as follows; A-Rank ≥ 0.36 , B-Rank ≥ 0.30 , C-Rank ≥ 0.25 , D-Rank < 0.25 . Per pixel scores were summarized to average values per vegetation type per 100 km² hexagon for display.

Sensitivity - Invasive Plant Species

Among desert shrubland and steppe, the effects of invasive species on ecosystem integrity is well known and there is considerable concern for their interactions with climate change [62]. Spatial models depicting likely presence and abundance of invasive annual grasses provide an important indication of vegetation condition, and therefore, relative sensitivity under the HCCVI framework. See [8] and [63] for further explanation of spatial models used here. Using the master database of over 20,000 invasive plant locality records with satellite imagery and a suite of environmental variables, inductive modeling was completed using RandomForests [42]. The resultant independently evaluated map surfaces represent invasive annual grass presence in five categories of expected absolute cover (<5%, 5-15%, 16-25%, 26-45%, and >45%). The five models were then combined onto one surface with higher predicted invasive cover classes taking precedence over lower cover classes on a per pixel basis. These absolute cover values were translated to index scores to reflect "1.0 = most favorable" to "0.0 = least favorable" index values as follows: <5% = 1.0, 5-15% = 0.80, 16-25% = 0.6, 26-45% = 0.4, >45% = 0.2. These per pixel scores were then summarized to average values per vegetation type per 100 km² hexagon. This measure applied to desert shrubland and grassland vegetation types where invasive annual grasses have substantial impact.

Sensitivity – Fire Regime Departure

Using estimates of fire frequency and successional rates, fire regime models predict the relative proportion of natural successional stages one might expect to encounter for a community type across a given landscape. They are therefore useful for indicating ecosystem degradation due to wildfire suppression or other human-caused alteration [64]. The US Interagency LANDFIRE program provides both quantitative reference models of vegetation states (i.e., successional stages) and transitions, as well as spatial models of wildfire regime departure (measured in percent of departure) that compare observed vs. predicted aerial extent of each successional stage [35]. For each vegetation type treated in this project, these percent departure values (in 10% increments) were translated to index scores to reflect "1.0 = most favorable" to "0.0 = least favorable" index values as follows: FRCC 1 = 1.0, FRCC 2 = 0.5, and FRCC 3 = 0.15. These per pixel scores were then summarized to average values per vegetation type per 100 km² hexagon.

Sensitivity – Forest Insect and Disease Risk

Forest insect and disease impacts on western US forests and woodlands are becoming pronounced, especially with increasing frequency of relatively mild winters [65]. With increasing rates of overwintering survival of both native and introduced insects, as well as compounded effects of drought [66] there is increasing potential for substantial disruption in forest stand structure, composition, and interacting effects with other natural disturbance processes [67]. The National Insect and Disease Risk Map defines forest areas where, "the expectation that, without remediation, at least 25% of standing live basal area greater than one inches in diameter will die

over a 15-year timeframe (2013-2027) due to insects and diseases” [68]. The resultant 240 m pixel resolution map represents insect and disease risk along a 0.0-1.0 ramp depicting low to high severity of predicted biomass loss (e.g., 0.05 = 5%, 0.25 = 25%, 0.35 = 35%, etc.). These index values were flipped in order to reflect our “1.0 = most favorable” to “0.0 = least favorable” index values. These per pixel scores were then summarized to average values per vegetation type per 100 km² hexagon. This index was applied only to forest and woodland types where forest insects and diseases have substantial impact.

Resilience – Ecosystem Adaptive Capacity

Below are described several measures of adaptive capacity, including diversity within functional species groups, climate change vulnerability of “keystone species,” and topo-climate variability.

Diversity within characteristic functional species groups

Natural communities may include several functional groups, or groups of organisms that pollinate, graze, disperse seeds, fix nitrogen, decompose organic matter, depredate smaller organisms, or perform other functions [69, 70]. Functional species groups (FSGs) form a link between key ecosystem processes and structures and ecological resilience. Experimental evidence gathered over recent decades supports the theoretical prediction that communities with functional groups made up of increasingly diverse members tend to be more resilient to perturbations [29]. Therefore, the more diverse the FSG (as measured by taxonomic richness), the greater the likelihood that at least one taxon will have characteristics that allow it to continue to perform its function in the community as climate changes.

Approaches to identifying FSGs for natural communities center on analysis of specific traits in response to environmental constraints [71]. In this effort, environmental settings, dynamics processes, species responses to those settings and processes, and key biotic interactions required for maintenance of each vegetation type, were evaluated to identify the most critical ecological processes and their related FSG. FSGs applicable to the vegetation types in this project included nitrogen fixers, biotic pollinators, biotic seed dispersers, biological soil crusts, perennial cool season grasses, perennial warm season graminoids, halophytes, xerophytes, and pyrophytes. Within each identified group, a listing of characteristic species is included based on existing documentation for the type. Lists of functional species groups used are described in the supporting information (Appendix S1).

In each instance, available literature was reviewed to document each group, and for each vegetation type, score them along a 0.0 to 1.0 scale. Due to limited knowledge of variation in FSG composition across the western US, the same score was applied consistently across the entire distribution of each vegetation type, and we scored FSG diversity in three categories of Low, Medium, or High. While ranges varied by FSG, generally those groups with 1-5 species were scored as low (= 0.15, 6-15 species as medium (0.5), and >15 species as high (1.0). Where several FSGs were identified for a given vegetation type, the lowest scoring FSG was applied to the type overall, as it would likely have a strong controlling effect on resilience.

CC Vulnerability of keystone species

To assess community resilience, it is important to consider the relative climate change vulnerability of species that play particularly important functional roles. We use the term “keystone species” here to refer to any species that, due to their key functional role in the community, and if extirpated or reduced in abundance, could cause disproportionate effects on the populations of other species that characterize the community. Determining the species that can be considered keystone requires an understanding of the natural history of many species in the community being assessed. Although there are quantitative means of identifying keystone species via food

web analysis [72], these methods can be time and data intensive. However, identification of potential keystone species may follow directly from the above process “Diversity within functional species groups.” That is, if an important ecosystem function is represented by just one species, that species is likely providing some ‘keystone’ function for purposed of this analysis. We reviewed all lists of species across our FSGs and identified a set of keystone species for each vegetation type.

We assessed keystone species vulnerability using the NatureServe Climate Change Vulnerability Index (CCVI), a trait-based tool that allows relatively rapid assessment of suites of species and is applicable to all terrestrial and aquatic plant and animal species [73]. The CCVI places species on a categorical scale from extremely vulnerable to those likely to benefit from climate change. For this effort, the CCVI was applied to the distribution of each species within each of the primary ecoregions that make up the distribution of the vegetation type. The CCVI categories were translated to a numerical scale (0.0-1.0 scale) for combination with other adaptive capacity measures.

Topo-climatic Variability

Natural communities occur across a range of both macro and micro-climates. For example, some major temperate grassland types of the western Great Plains form the upland ‘matrix’ of an ecoregion and in topography of limited relief, while other woodland types occur in microclimates formed by rugged canyons and low mountain ranges. Their current distributions are largely based on both regional and local-scale responses to temperature and precipitation. The relative variability in climate encompassed by the distribution of a given communities can provide another useful indication of adaptive capacity under changing climate [74]. The idea of climate change ‘velocity’ [75] has been proposed as a measure of climate change exposure, and it captures in part the interaction of changing climate with topography. The measure is derived by dividing the rate of projected climate change in units of °C per year by the rate of spatial climate variability, i.e., the temperature differential of adjacent grid cells, measured in °C km⁻¹. Areas with relatively rugged topography and elevational gradients will support a greater diversity of microclimate conditions (re: low velocity) as compared with areas of flat topography. Therefore, for the same increment of climate change and time-period, a given species would be required to migrate a shorter distance in areas of rugged topography as compared with expansive flat landscapes.

Since we provide for independent measures of climate change exposure with the HCCVI framework, we used maps of terrain ruggedness to express the influence of topography on microclimate variability. The terrain ruggedness index (TRI) provided by Riley et al. [76] was used with 90m digital elevation data of North America. TRI is the sum change in elevation between a given grid cell and its eight neighboring grid cells. For example, a cell located at 200 m elevation, surrounded by four cells at 100 m and 4 more cells at 125 m would yield a TRI of 700 (400+500-200=700). The topo-climatic variability map was derived by normalizing TRI scores to the 0.01-1.0 scale using extreme TRI estimates as projected for North America (TRI = 6,196). We overlaid this normalized map with distributions of each vegetation type to arrive at per pixel scores and then summarized them by 100km² hexagon.

Appendix 2: Proportional area for all component and composite HCCVI scores for 52 major vegetation types (supplied as separate file)

References

1. Swetnam T.W.; Betancourt J.L. Mesoscale disturbance and ecological response to decadal climatic variability in the American Southwest. *Journal of Climate* **1998**, *11*(12):3128-47.
2. Wells P.V. Paleobiogeography of montane islands in the Great Basin since the last glaciopluvial. *Ecological Monographs* **1983**, Feb;53(4):341-82.
3. Betancourt J.L.; Van Devender T.R.; Martin P.S.; editors. Packrat middens: the last 40,000 years of biotic change. University of Arizona Press; 1990.
4. Barros, V.R.; Field, C.B.; Dokke, D.J.; Mastrandrea, M.D.; Mach, K. J.; Bilir, T.E., ... Girma, B. Climate change 2014: impacts, adaptation, and vulnerability-Part B: regional aspects-Contribution of Working Group II to the Fifth Assessment Report of the Intergovernmental Panel on Climate Change. 2014.
5. Mantyka-pringle, C.S.; Martin, T.G.; Rhodes, J.R. Interactions between climate and habitat loss effects on biodiversity: a systematic review and meta-analysis. *Global Change Biology* **2012**, *18*(4), 1239-1252.
6. Fagre D.B.; Charles, C.W.; Allen, C.D.; Birkeland, C.; Chapin III, F.S.; Groffman, P.M.; ... Sugihara, G. Thresholds of Climate Change in Ecosystems. A report by the US Climate Change Science Program and the Subcommittee on Global Change Research. US Geological Survey, Department of the Interior, Washington D.C., USA. 2009.
7. Finch, D.M. Climate change in grasslands, shrublands, and deserts of the interior American West: a review and needs assessment. 2012. *Gen. Tech. Rep. RMRS-GTR-285. Fort Collins, CO: US Department of Agriculture, Forest Service, Rocky Mountain Research Station. 139 p., 285.*
8. Comer, P.J.; Crist, P.J.; Reid, M.S.; Hak, J.; Hamilton, H.; Unnasch, B.; ... Kutner, L. A Rapid Ecoregional Assessment of the Central Basin and Range Ecoregion. Report, appendices, and databases provided to the Bureau of Land Management. 2013.
9. Intergovernmental Panel on Climate Change. Climate Change 2007: Impacts, adaptation, and vulnerability. Contribution of Working Group II to the fourth assessment report of the Intergovernmental Panel on Climate Change. Cambridge, England: Cambridge University Press. 2007.
10. Fortini L; Schubert O. Beyond exposure, sensitivity and adaptive capacity: a response based ecological framework to assess species climate change vulnerability. *Climate Change Responses* **2017**, Dec;4(1):2.
11. Intergovernmental Panel on Climate Change. Climate Change 2014: Impacts, adaptation, and vulnerability. Contribution of Working Group II to the fifth assessment report of the Intergovernmental Panel on Climate Change. Cambridge, England/New York, NY: Cambridge University Press. 2014.
12. Foden, W.B.; Young, B.E.; Akçakaya, H.R.; Garcia, R.A.; Hoffmann, A.A.; Stein, B.A.; ... & Hole, D. G. Climate change vulnerability assessment of species. *Wiley Interdisciplinary Reviews: Climate Change* **2018**, e551.
13. Thomas, C.D.; Cameron, A.; Green, R. E.; Bakkenes, M., Beaumont, L. J.; Collingham, Y. C.; ...Hughes, L. Extinction risk from climate change. *Nature* **2004**, 427(6970), 145.
14. Laidre, K.L.; Stirling, I.; Lowry, L.F.; Wiig, Ø.; Heide-Jørgensen, M.P.; Ferguson, S.H. Quantifying the sensitivity of Arctic marine mammals to climate-induced habitat change. *Ecological Applications* **2008**, *18*(sp2), S97-S125.
15. Rowland, E.L.; Davison, J.E.; Graumlich, L.J. Approaches to evaluating climate change impacts on species: a guide to initiating the adaptation planning process. *Environmental management* **2008**, *47*(3), 322-337.

16. Pacifici, M.; Foden, W.B.; Visconti, P.; Watson, J.E.; Butchart, S.H.; Kovacs, K.M.; ... Corlett, R.T. Assessing species vulnerability to climate change. *Nature Climate Change* **2015**, *5*(3), 215.
17. Swanston, C.; Janowiak, M.; Iverson, L.; Parker, L.; Mladenoff, D.; Brandt, L.; ... Peters, M. Ecosystem Vulnerability Assessment and Synthesis. 2010.
18. Rustad, L.; Campbell, J.; Dukes, J.S.; Huntington, T.; Lambert, K.F.; Mohan, J.; Rodenhouse, N. Changing climate, changing forests: The impacts of climate change on forests of the northeastern United States and eastern Canada. 2012. *Gen. Tech. Rep. NRS-99. Newtown Square, PA: US Department of Agriculture, Forest Service, Northern Research Station*. 48 p., 99, 1-48.
19. Schneider, R. R. *Alberta's natural subregions under a changing climate: past, present, and future*. 2013. Edmonton, AB: Alberta Biodiversity Monitoring Institute.
20. Hamann, A.; Roberts, D.R.; Barber, Q.E.; Carroll, C.; & Nielsen, S. E. Velocity of climate change algorithms for guiding conservation and management. *Global Change Biology* **2015**, *21*(2), 997-1004.
21. Lindner, M.; Maroschek, M.; Netherer, S.; Kremer, A.; Barbati, A.; Garcia-Gonzalo, J.; Seidl, R.; Delzon, S.; Corona, P.; Kolström, M.; Lexer, M.J. Climate change impacts, adaptive capacity, and vulnerability of European forest ecosystems. *Forest ecology and management* **2010**, *259*(4), pp.698-709.
22. Cinner J.E.; Huchery C.; Darling E.S.; Humphries A.T.; Graham N.A.J.; Hicks C.C., et al. Evaluating Social and Ecological Vulnerability of Coral Reef Fisheries to Climate Change. *PLoS ONE* **2013**, *8*(9): e74321. <https://doi.org/10.1371/journal.pone.0074321>
23. Thorne, J.H.; Boynton, R.M.; Holguin, A.J.; Stewart, J.A.; Bjorkman, J. A climate change vulnerability assessment of California's terrestrial vegetation. 2016. *California Department of Fish and Wildlife, Sacramento, CA*, 331.
24. Flint, L.E.; Flint, A.L.; Thorne, J.H.; Boynton, R.M. Fine-scale hydrological modeling for regional applications: Model development and performance. *Ecological Processes* **2013**, *2*:25
25. Li, D.; Wu, S.; Liu, L.; Zhang, Y.; Li, S. Vulnerability of the global terrestrial ecosystems to climate change. *Global change biology*. 2018.
26. Young, B.; Byers, E.; Gravuer, K.; Hall, K.; Hammerson, G.; Redder, A. Guidelines for using the NatureServe climate change vulnerability index. 2011. *NatureServe, Arlington, Virginia, USA*.
27. Holling, C.S. Resilience and stability of ecological systems. *Annual review of ecology and systematics* **1973**, *4*(1), 1-23.
28. Gunderson, L.H. Ecological resilience—in theory and application. *Annual review of ecology and systematics* **2000**, *31*(1), 425-439.
29. Walker, B.; Holling, C.S.; Carpenter, S. R.; Kinzig, A. Resilience, adaptability and transformability in social-ecological systems. *Ecology and society* **2004**, *9*(2).
30. Magness, D.R.; Morton, J.M.; Huettmann, F.; Chapin III, F. S.; McGuire, A.D. A climate-change adaptation framework to reduce continental-scale vulnerability across conservation reserves. *Ecosphere* **2011**, *2*(10), 1-23.
31. Tonmoy F.N.; El-Zein A; Hinkel J. Assessment of vulnerability to climate change using indicators: a meta-analysis of the literature. *Wiley Interdisciplinary Reviews: Climate Change* **2014**, Nov;5(6):775-92.
32. Wiken, E.; Jiménez Nava, F.; Griffith, G. North American terrestrial ecoregions—Level III: Montreal, Canada, Commission for Environmental Cooperation, 2011. 149 p., accessed May 1, 2013.
33. Comer, P.; Faber-Langendoen, D.; Evans, R.; Gawler, S.; Josse, C.; Kittel, G.; ... Snow, K. Ecological systems of the United States: a working classification of US terrestrial systems. 2003. *NatureServe, Arlington, VA*.
34. Comer, P.J.; Schulz, K.A. Standardized ecological classification for mesoscale mapping in the southwestern United States. *Rangeland Ecology & Management* **2007**, *60*(3), 324-335.

35. Rollins, M.G. LANDFIRE: a nationally consistent vegetation, wildland fire, and fuel assessment. *International Journal of Wildland Fire* **2009**, *18*(3), 235-249.
36. Comer, P.J.; Hak, J.C.; Josse, C.; Smyth, R. Long-term Change in Extent and Current Protection of Terrestrial Ecosystem Diversity in the Temperate and Tropical Americas. submitted.
37. Kling, M.M.; Auer, S.; Comer, P.J.; Ackerly, D.D.; Hamilton, H.H. Multiple dimensions of ecological vulnerability to climate change. in preparation.
38. O'Donnell, M.S.; Ignizio, D.A. Bioclimatic predictors for supporting ecological applications in the conterminous United States. *US Geological Survey Data Series* **2012**, 691(10).
39. Oyler, J.W.; Ballantyne, A.; Jencso, K.; Sweet, M.; Running, S.W. Creating a topoclimatic daily air temperature dataset for the conterminous United States using homogenized station data and remotely sensed land skin temperature. *International Journal of Climatology* **2015**, *35*(9), 2258-2279.
40. Daly, C.; Halbleib, M.; Smith, J.I.; Gibson, W.P.; Doggett, M.K.; Taylor, G.H.; ... Pasteris, P.P. Physiographically sensitive mapping of climatological temperature and precipitation across the conterminous United States. *International Journal of Climatology: a Journal of the Royal Meteorological Society* **2008**, *28*(15), 2031-2064.
41. Wang, T.; Hamann, A.; Spittlehouse, D.; Carroll, C. Locally downscaled and spatially customizable climate data for historical and future periods for North America. *PLoS One* **2016**, *11*(6), e0156720.
42. Liaw, A.; Wiener, M. Classification and regression by randomForest. *R news* **2002**, *2*(3), 18-22.
43. Bahn, V.; McGill, B.J. Testing the predictive performance of distribution models. *Oikos* **2013**, *122*(3), 321-331.
44. Gregorutti, B.; Michel, B.; Saint-Pierre, P. Grouped variable importance with random forests and application to multiple functional data analysis. *Computational Statistics & Data Analysis* **2015**, *90*, 15-35.
45. Damschen, E.I.; Baker, D.V.; Bohrer, G.; Nathan, R.; Orrock, J.L.; Turner, J.R.; ... Tewksbury, J.J. How fragmentation and corridors affect wind dynamics and seed dispersal in open habitats. *Proceedings of the national academy of sciences*, 2014. 201308968.
46. Pausas, J. G.; Keeley, J.E. Abrupt climate-independent fire regime changes. *Ecosystems*, 2014. *17*(6), 1109-1120.
47. Aycrigg, J.L.; Davidson, A.; Svancara, L.K.; Gergely, K.J.; McKerrow, A.; Scott, J.M. Representation of ecological systems within the protected areas network of the continental United States. *PLoS One* **2013**, *8*(1), e54689.
48. Keith, D.A.; Rodríguez, J.P.; Rodríguez-Clark, K.M.; Nicholson, E.; Aapala, K. Alonso, A., ... Benson, J. S. Scientific foundations for an IUCN Red List of Ecosystems. *PLOS ONE* **2013**, *8*(5), e62111.
49. Bland L; Keith DA; Miller RM; Murray NJ; Rodríguez JP. Guidelines for the application of IUCN Red List of Ecosystems Categories and Criteria, version 1.1. IUCN, Gland, Switzerland. 2016.
50. Hansen, L.; Biringer, J.L.; Hoffman, J. Buying time: A user's manual to building resistance and resilience to climate change in natural systems. 2003.
51. Millar, C. I.; Stephenson, N. L.; Stephens, S. L. Climate change and forests of the future: managing in the face of uncertainty. *Ecological applications* **2007**, *17*(8), 2145-2151.
52. Chambers, J.C.; Beck, J.L.; Campbell, S.; Carlson, J.; Christiansen, T.J.; Clause, K.J.,... Pyke, D.A. Using resilience and resistance concepts to manage threats to sagebrush ecosystems, Gunnison sage-grouse, and Greater sage-grouse in their eastern range: A strategic multi-scale approach. 2016. Gen. Tech. Rep. RMRS-GTR-356. Fort Collins, CO: U.S. Department of Agriculture, Forest Service, Rocky Mountain Research Station. 143p
53. Bachelet D.; Ferschweiler K.; Sheehan T.; Strittholt J. Climate change effects on southern California deserts. *Journal of Arid Environments*, **2016**, Apr 30;127:17-29.

54. Thorne, J.H.; Choe, H.; Stine, P.A.; Chambers, J.C.; Holguin, A.; Kerr, A.C.; Schwartz, M.W. Climate change vulnerability assessment of forests in the Southwest USA. *Climatic Change* **2018**, *148*(3), 387-402.
55. Sanderson, E. W.; Jaiteh, M.; Levy, M.A.; Redford, K. H.; Wannebo, A.V.; Woolmer, G. The human footprint and the last of the wild: the human footprint is a global map of human influence on the land surface, which suggests that human beings are stewards of nature, whether we like it or not. *AIBS Bulletin* **2002**, *52*(10), 891-904.
56. Theobald, D.M. A general model to quantify ecological integrity for landscape assessments and US application. *Landscape ecology* **2013**, *28*(10), 1859-1874.
57. Haddad, N.M.; Brudvig, L.A.; Clobert, J.; Davies, K. F.; Gonzalez, A.; Holt, R.D.; ... Cook, W.M. Habitat fragmentation and its lasting impact on Earth's ecosystems. *Science Advances* **2015**, *1*(2), e1500052.
58. Hak, J.C.; Comer, P.J. Modeling landscape condition for biodiversity assessment—application in temperate North America. *Ecological Indicators* **2017**, *82*, 206-216.
59. Riitters, K.H.; Wickham, J.D. How far to the nearest road?. *Frontiers in Ecology and the Environment* **2003**, *1*(3), 125-129.
60. Hansen, A.J.; Knight, R.L.; Marzluff, J.M.; Powell, S.; Brown, K.; Gude, P.H.; Jones, K. Effects of exurban development on biodiversity: patterns, mechanisms, and research needs. *Ecological Application* **2005**, *15*(6), 1893-1905.
61. Leu, M.; Hanser, S.E.; Knick, S.T. The human footprint in the west: a large-scale analysis of anthropogenic impacts. *Ecological Applications* **2008**, *18*(5), 1119-1139.
62. Abatzoglou, J.T.; Kolden, C.A. Climate change in western US deserts: potential for increased wildfire and invasive annual grasses. *Rangeland Ecology & Management* **2011**, *64*(5), 471-478.
63. Hak, J.C.; Comer, P.J. Modeling Invasive Annual Grass Vulnerability in the Cold Deserts of the Intermountain West. *in review*.
64. Swaty, R.; Blankenship, K.; Hagen, S.; Fargione, J.; Smith, J.; Patton, J. Accounting for ecosystem alteration doubles estimates of conservation risk in the conterminous United States. *PLOS ONE* **2011**, *6*(8), e23002.
65. Kurz, W. A.; Dymond, C. C.; Stinson, G.; Rampley, G. J.; Neilson, E. T.; Carroll, A. L.; ... Safranyik, L. Mountain pine beetle and forest carbon feedback to climate change. *Nature* **2008**, *452*(7190), 987.
66. Breshears, D.D.; Cobb, N.S.; Rich, P.M.; Price, K.P.; Allen, C.D.; Balice, R.G.; ... Anderson, J.J. Regional vegetation die-off in response to global-change-type drought. *Proceedings of the National Academy of Sciences*, **2005**, *102*(42), 15144-15148.
67. Allen, C.D.; Macalady, A.K.; Chenchouni, H.; Bachelet, D.; McDowell, N.; Vennetier, M.; ... Gonzalez, P. A global overview of drought and heat-induced tree mortality reveals emerging climate change risks for forests. *Forest ecology and management* **2010**, *259*(4), 660-684.
68. Krist Jr, F. J.; Ellenwood, J.R.; Woods, M.E.; McMahan, A.J.; Cowardin, J.P.; Ryerson, D.E.; ... Romero, S.A. *2027 National insect and disease forest risk assessment 2013*, USDA Forest Service, Forest Health Technology Enterprise Team, Fort Collins, Colorado. Publication FHTET-14-01.
69. Rosenfeld, J.S. Functional redundancy in ecology and conservation. *Oikos*, **2002**, *98*(1), 156-162.
70. Folke, C.; Carpenter, S.; Walker, B.; Scheffer, M.; Elmqvist, T.; Gunderson, L.; Holling, C.S. Regime shifts, resilience, and biodiversity in ecosystem management. *Annu. Rev. Ecol. Evol. Syst.* **2004**, *35*, 557-581.
71. Díaz, S.; Cabido, M. Vive la difference: plant functional diversity matters to ecosystem processes. *Trends in ecology & evolution* **2001**, *16*(11), 646-655.
72. Ebenman, B.; Jonsson, T. Using community viability analysis to identify fragile systems and keystone species. *Trends in Ecology & Evolution* **2005**, *20*(10), 568-575.

- 882 73. Young, B.; Byers, E.; Gravuer, K.; Hall, K.; Hammerson, G.; Redder, A. Guidelines for using the NatureServe
883 climate change vulnerability index. 2011. *NatureServe, Arlington, Virginia, USA*.
- 884 74. Ackerly, D.D.; Loarie, S.R.; Cornwell, W.K.; Weiss, S.B.; Hamilton, H.; Branciforte, R.; Kraft, N.J.B. The
885 geography of climate change: implications for conservation biogeography. *Diversity and Distributions* **2010**,
886 *16*(3), 476-487.
- 887 75. Loarie, S.R.; Duffy, P.B.; Hamilton, H.; Asner, G.P.; Field, C.B.; Ackerly, D.D. The velocity of climate change.
888 *Nature* **2009**, *462*(7276), 1052.
- 889 76. Riley, S.J. Index that quantifies topographic heterogeneity. *intermountain Journal of sciences* **1999**, *5*(1-4), 23-27.