

**Table A.1**

General description of the surface sediment samples and sediment cores collected from the upland lakes of the Carajás region.

Sample codes	Location	Geographic coordinates		Lake types	Sample types	Sediment type
		(UTM: 22M)				
		Easting	Northing			
VL 1	Serra Sul (S11D)	571790,88	9292552,90	Active	Surface	Organic mud
VL 2	Serra Sul (S11D)	571724,61	9292429,99	Active	Surface	Organic mud
VL 3	Serra Sul (S11D)	571671,60	9292309,73	Active	Surface	Fragmental peat
VL 4	Serra Sul (S11D)	571689,80	9292332,13	Active	Surface	Fragmental peat
VL 5	Serra Sul (S11D)	571487,48	9292400,79	Active	Surface	Fragmental peat
VL 7	Serra Sul (S11D)	571758,37	9292623,55	Active	Surface	Slightly oxidized mud
VL 9	Serra Sul (S11D)	571693,05	9292686,98	Active	Surface	Slightly oxidized mud
VL 10	Serra Sul (S11D)	571590,26	9292632,47	Active	Surface	Slightly oxidized mud
VL 11	Serra Sul (S11D)	571477,89	9292566,19	Active	Surface	Organic mud
VL 13A	Serra Sul (S11D)	571382,17	9292631,61	Active	Surface	Organic mud
VL 13B	Serra Sul (S11D)	571404,19	9292627,40	Active	Surface	Organic mud
VL 14	Serra Sul (S11D)	571545,18	9292668,03	Active	Surface	Slightly oxidized mud
VL 15	Serra Sul (S11D)	571644,21	9292760,97	Active	Surface	Slightly oxidized mud
VL 16	Serra Sul (S11D)	571591,79	9292833,80	Active	Surface	Mud sandy
VL 17	Serra Sul (S11D)	571505,62	9292770,79	Active	Surface	Slightly oxidized mud
VL 18	Serra Sul (S11D)	571288,54	9292677,83	Active	Surface	Fragmental peat
VL 19	Serra Sul (S11D)	571289,95	9292750,47	Active	Surface	Mud sandy
VL 20	Serra Sul (S11D)	571370,67	9292840,64	Active	Surface	Fragmental peat
VL 22	Serra Sul (S11D)	571185,41	9292737,30	Active	Surface	Fragmental peat
VL 25	Serra Sul (S11D)	570930,95	9292860,67	Active	Surface	Fragmental peat
VL 26	Serra Sul (S11D)	570917,19	9292892,04	Active	Surface	Fragmental peat
VL 27	Serra Sul (S11D)	570882,15	9292853,75	Active	Surface	Fragmental peat
VL 28	Serra Sul (S11D)	570837,32	9292871,64	Active	Surface	Fragmental peat
VL 29	Serra Sul (S11D)	570828,61	9292888,46	Active	Surface	Fragmental peat
VL 30	Serra Sul (S11D)	570852,90	9292911,09	Active	Surface	Fragmental peat

VL 31	Serra Sul (S11D)	570888,20	9292906,37	Active	Surface	Fragmental peat
AM 1	Serra Sul (S11D)	569452,08	9292291,12	Active	Surface	Organic mud
AM 2	Serra Sul (S11D)	569452,00	9292349,00	Active	Surface	Organic mud
AM 3	Serra Sul (S11D)	569454,42	9292396,14	Active	Surface	Organic mud
AM 4	Serra Sul (S11D)	569448,22	9292449,03	Active	Surface	Mud
AM 5	Serra Sul (S11D)	569446,07	9292502,46	Active	Surface	Organic mud
AM 6	Serra Sul (S11D)	569450,74	9292549,44	Active	Surface	Organic mud
AM 7	Serra Sul (S11D)	569447,85	9292598,64	Active	Surface	Organic mud
AM 8	Serra Sul (S11D)	569453,40	9292651,53	Active	Surface	Organic mud
AM 9	Serra Sul (S11D)	569450,00	9292697,95	Active	Surface	Organic mud
AM 10	Serra Sul (S11D)	569449,69	9292750,64	Active	Surface	Mud
AM 11	Serra Sul (S11D)	569444,85	9292800,38	Active	Surface	Mud
AM 13	Serra Sul (S11D)	569452,39	9292848,48	Active	Surface	Organic mud
AM 14	Serra Sul (S11D)	569467,00	9292891,21	Active	Surface	Organic mud
AM 15	Serra Sul (S11D)	569554,56	9292891,47	Active	Surface	Organic mud
AM 16	Serra Sul (S11D)	569547,87	9292850,02	Active	Surface	Mud
AM 17	Serra Sul (S11D)	569548,92	9292801,74	Active	Surface	Organic mud
AM 18	Serra Sul (S11D)	569551,44	9292751,62	Active	Surface	Organic mud
AM 19	Serra Sul (S11D)	569546,77	9292702,99	Active	Surface	Organic mud
AM 20	Serra Sul (S11D)	569551,50	9292651,76	Active	Surface	Organic mud
AM 21	Serra Sul (S11D)	569550,34	9292603,49	Active	Surface	Fragmental peat
AM 22	Serra Sul (S11D)	569550,64	9292549,50	Active	Surface	Organic mud
AM 23	Serra Sul (S11D)	569549,29	9292502,15	Active	Surface	Organic mud
AM 24	Serra Sul (S11D)	569549,05	9292454,43	Active	Surface	Mud
AM 25	Serra Sul (S11D)	569550,27	9292400,08	Active	Surface	Mud
AM 26	Serra Sul (S11D)	569547,26	9292353,46	Active	Surface	Mud
AM 30	Serra Sul (S11D)	569607,71	9292644,51	Active	Surface	Mud
AM 33	Serra Sul (S11D)	569590,39	9292800,77	Active	Surface	Mud
AM 34	Serra Sul (S11D)	569515,69	9292911,23	Active	Surface	Organic mud
AM 35	Serra Sul (S11D)	569441,55	9292879,63	Active	Surface	Organic mud
AM 36	Serra Sul (S11D)	569394,82	9292794,38	Active	Surface	Organic mud

AM 37	Serra Sul (S11D)	569393,96	9292697,65	Active	Surface	Mud
AM 39	Serra Sul (S11D)	569344,32	9292500,93	Active	Surface	Organic mud
AM 40	Serra Sul (S11D)	569329,19	9292481,78	Active	Surface	Organic mud
AM 41	Serra Sul (S11D)	569316,21	9292421,73	Active	Surface	Pebbles
AM 42	Serra Sul (S11D)	569351,89	9292357,76	Active	Surface	Organic mud
AM 45	Serra Sul (S11D)	569572,95	9292403,92	Active	Surface	Mud
AM 46	Serra Sul (S11D)	569581,91	9292501,74	Active	Surface	Mud
AM 47	Serra Sul (S11D)	569492,17	9292521,38	Active	Surface	Fragmental peat
AM 48	Serra Sul (S11D)	569493,94	9292612,22	Active	Surface	Organic mud
AM 49	Serra Sul (S11D)	569499,08	9292739,90	Active	Surface	Fragmental peat
TI-1.2	Serra Sul (S11A)	560987,07	9298197,89	Active	Surface	Fragmental peat
TI-1.3	Serra Sul (S11A)	561017,70	9298177,58	Active	Surface	Fragmental peat
TI-1.5	Serra Sul (S11A)	561002,12	9298229,86	Active	Surface	Organic mud
TI-1.8	Serra Sul (S11A)	560978,76	9298280,25	Active	Surface	Fragmental peat
TI-1.9	Serra Sul (S11A)	561023,48	9298246,84	Active	Surface	Organic mud
TI-1.12	Serra Sul (S11A)	561084,61	9298268,99	Active	Surface	Organic mud
TI-1.13	Serra Sul (S11A)	561018,65	9298308,85	Active	Surface	Organic mud
TI-1.15	Serra Sul (S11A)	561031,90	9298399,49	Active	Surface	Fragmental peat
TI-1.16	Serra Sul (S11A)	561078,56	9298342,86	Active	Surface	Organic mud
TI-1.17	Serra Sul (S11A)	561124,34	9298305,99	Active	Surface	Organic mud
TI-1.18	Serra Sul (S11A)	561153,62	9298292,64	Active	Surface	Fragmental peat
TI-1.19	Serra Sul (S11A)	561191,61	9298314,59	Active	Surface	Fragmental peat
TI-1.20	Serra Sul (S11A)	561146,33	9298348,37	Active	Surface	Organic mud
TI-1.21	Serra Sul (S11A)	561103,37	9298393,68	Active	Surface	Organic mud
TI-1.22	Serra Sul (S11A)	561061,66	9298436,69	Active	Surface	Organic mud
TI-1.24	Serra Sul (S11A)	561133,36	9298428,11	Active	Surface	Organic mud
TI-1.25	Serra Sul (S11A)	561190,75	9298386,51	Active	Surface	Organic mud
TI-1.26	Serra Sul (S11A)	561227,75	9298344,63	Active	Surface	Organic mud
TI-1.28	Serra Sul (S11A)	561204,89	9298416,46	Active	Surface	Organic mud
TI-1.29	Serra Sul (S11A)	561159,56	9298464,85	Active	Surface	Organic mud
TI-1.30	Serra Sul (S11A)	561131,38	9298491,11	Active	Surface	Fragmental peat

TI-1.31	Serra Sul (S11A)	561187,81	9298530,99	Active	Surface	Fragmental peat
TI-1.32	Serra Sul (S11A)	561228,77	9298476,08	Active	Surface	Fragmental peat
TI-1.33	Serra Sul (S11A)	561272,35	9298432,73	Active	Surface	Fragmental peat
TI-2.1	Serra Sul (S11A)	560914,63	9297980,32	Active	Surface	Fragmental peat
TI-2.2	Serra Sul (S11A)	560886,11	9298004,58	Active	Surface	Fragmental peat
TI-2.3	Serra Sul (S11A)	560817,67	9298037,02	Active	Surface	Fragmental peat
TI-2.4	Serra Sul (S11A)	560761,43	9298005,41	Active	Surface	Fragmental peat
TI-2.5	Serra Sul (S11A)	560800,81	9297995,48	Active	Surface	Fragmental peat
TI-2.6	Serra Sul (S11A)	560851,41	9297964,57	Active	Surface	Fragmental peat
TI-2.7	Serra Sul (S11A)	560940,82	9297923,76	Active	Surface	Fragmental peat
TI-2.8	Serra Sul (S11A)	560863,86	9297911,68	Active	Surface	Fragmental peat
TI-2.9	Serra Sul (S11A)	560780,27	9297912,74	Active	Surface	Fragmental peat
TI-2.10	Serra Sul (S11A)	560733,39	9297944,70	Active	Surface	Fragmental peat
TI-2.11	Serra Sul (S11A)	560719,45	9297883,22	Active	Surface	Fragmental peat
TI-2.12	Serra Sul (S11A)	560770,86	9297877,94	Active	Surface	Fragmental peat
TI-2.13	Serra Sul (S11A)	560828,33	9297869,42	Active	Surface	Fragmental peat
TI-2.14	Serra Sul (S11A)	560915,65	9297878,66	Active	Surface	Fragmental peat
TI-2.15	Serra Sul (S11A)	560956,22	9297824,89	Active	Surface	Fragmental peat
TI-2.16	Serra Sul (S11A)	560883,92	9297836,19	Active	Surface	Fragmental peat
TI-2.17	Serra Sul (S11A)	560804,57	9297841,44	Active	Surface	Fragmental peat
TI-2.18	Serra Sul (S11A)	560712,07	9297816,77	Active	Surface	Fragmental peat
TI-2.19	Serra Sul (S11A)	560754,66	9297760,86	Active	Surface	Fragmental peat
TI-2.20	Serra Sul (S11A)	560814,99	9297791,24	Active	Surface	Fragmental peat
TI-2.21	Serra Sul (S11A)	560873,66	9297795,58	Active	Surface	Fragmental peat
TI-2.22	Serra Sul (S11A)	560973,80	9297782,86	Active	Surface	Fragmental peat
TI-2.23	Serra Sul (S11A)	560995,44	9297725,53	Active	Surface	Fragmental peat
TI-2.24	Serra Sul (S11A)	560926,86	9297722,83	Active	Surface	Organic mud
TI-2.25	Serra Sul (S11A)	560845,93	9297752,95	Active	Surface	Organic mud
TI-2.26	Serra Sul (S11A)	560791,09	9297724,66	Active	Surface	Fragmental peat
TI-2.27	Serra Sul (S11A)	560855,75	9297691,62	Active	Surface	Fragmental peat
TI-2.28	Serra Sul (S11A)	560913,37	9297684,01	Active	Surface	Fragmental peat

TI-2.29	Serra Sul (S11A)	561003,38	9297667,24	Active	Surface	Fragmental peat
TI-2.30	Serra Sul (S11A)	560978,28	9297601,71	Active	Surface	Fragmental peat
TI-2.31	Serra Sul (S11A)	560925,51	9297630,28	Active	Surface	Fragmental peat
TI-2.32	Serra Sul (S11A)	560911,19	9297762,52	Active	Surface	Organic mud
TI-3.2	Serra Sul (S11A)	560987,15	9297393,99	Active	Surface	Fragmental peat
TI-3.3	Serra Sul (S11A)	561072,25	9297280,26	Active	Surface	Fragmental peat
TI-3.5	Serra Sul (S11A)	561164,97	9297291,02	Active	Surface	Organic mud
TI-3.6	Serra Sul (S11A)	561121,69	9297394,91	Active	Surface	Organic mud
TI-3.9	Serra Sul (S11A)	561191,36	9297408,03	Active	Surface	Organic mud
TI-3.10	Serra Sul (S11A)	561234,78	9297364,61	Active	Surface	Organic mud
TI-3.12	Serra Sul (S11A)	561336,79	9297374,19	Active	Surface	Fragmental peat
TI-3.14	Serra Sul (S11A)	561231,62	9297503,07	Active	Surface	Fragmental peat
TI-3.16	Serra Sul (S11A)	561329,75	9297559,79	Active	Surface	Organic mud
TI-3.17	Serra Sul (S11A)	561395,36	9297488,26	Active	Surface	Organic mud
TI-3.18	Serra Sul (S11A)	561444,12	9297422,23	Active	Surface	Organic mud
TI-3.19	Serra Sul (S11A)	561524,53	9297469,04	Active	Surface	Organic mud
TI-3.20	Serra Sul (S11A)	561452,13	9297549,59	Active	Surface	Organic mud
TI-3.21	Serra Sul (S11A)	561383,77	9297653,33	Active	Surface	Organic mud
TI-3.24	Serra Sul (S11A)	561481,55	9297691,48	Active	Surface	Fragmental peat
TI-3.25	Serra Sul (S11A)	561553,13	9297617,71	Active	Surface	Fragmental peat
TI-3.27	Serra Sul (S11A)	561630,00	9297657,47	Active	Surface	Fragmental peat
TI-3.28	Serra Sul (S11A)	561586,10	9297695,37	Active	Surface	Organic mud
TI-3.29	Serra Sul (S11A)	561541,81	9297739,22	Active	Surface	Organic mud
TI-3.32	Serra Sul (S11A)	561643,18	9297742,39	Active	Surface	Fragmental peat
TI-3.34	Serra Sul (S11A)	561494,32	9297590,07	Active	Surface	Organic mud
TI-3.35	Serra Sul (S11A)	561436,16	9297675,04	Active	Surface	Organic mud
TI-3.36	Serra Sul (S11A)	561025,66	9297334,58	Active	Surface	Organic mud
LTI3 (3 Irmãs)	Serra Sul (S11A)	561348,00	9297473,00	Active	Core	Mostly inorganic (detritic), organic (peat)
LV2 (Violão)	Serra Sul (S11D)	571528,72	9292618,09	Active	Core	Mostly inorganic (detritic), organic (peat), chemical (siderites)
LSL	Serra Leste	651289,70	9339934,76	Active	Core	Mostly organic (peat), inorganic (detritic)
R1	Serra Sul (S11B)	567836,08	9296028,41	Inactive	Core	Mostly organic (peat), chemical (siderites), inorganic (detritic)

R2	Serra Sul (S11D)	575417,88	9291446,33	Inactive	Core	Mostly inorganic (detritic), chemical (siderites), organic
R4	Serra Sul (S11A)	560551,82	9301719,87	Inactive	Core	Organic (peat), inorganic (detritic)
R5	Serra Sul (S11C)	567129,31	9297347,57	Inactive	Core	Mostly inorganic (detritic), chemical (siderites), organic (peat)
ST02	Serra do Tarzan	594346,18	9300238,71	Inactive	Core	Mostly inorganic (detritic), chemical (siderites), organic (peat)
LB3	Serra da Bocaína	620610,21	9301890,65	Inactive	Core	Organic (peat), inorganic (detritic)
LB4	Serra da Bocaína	617877,84	9300334,75	Inactive	Core	Mostly organic (peat), inorganic (detritic)
LTM2 (Trilha da Mata)	Serra Norte	600741,17	9332248,63	Inactive	Core	Mostly organic (peat), inorganic (detritic)

---

**Table A.2**

Radiocarbon dates (AMS) of the samples from Carajás region.

<b>Samples</b>	<b>Lab. code</b>	<b>Material Pre-treatment</b>	<b>14C age (yr BP)</b>	<b>Cal. age, 2<math>\sigma</math>-range</b>
LT13.3-20-21	BETA 458621	Organic sediment: acid washes	1580 $\pm$ 30	1405-1540
LT13.3-30-31	BETA 458622	Organic sediment: acid washes	3730 $\pm$ 30	3980-4155
LT13.3-40-41	BETA 458623	Organic sediment: acid washes	4930 $\pm$ 30	5600-5720
LT13.3-50-51	BETA 458624	Organic sediment: acid washes	7080 $\pm$ 30	7850-7965
LT13.3-60-61	BETA 458625	Organic sediment: acid washes	5130 $\pm$ 30	5860-5940
LT13.3-70-71	BETA 458626	Organic sediment: acid washes	8660 $\pm$ 30	9545-9680
LT13.3-80-81	BETA 458627	Organic sediment: acid washes	9950 $\pm$ 40	11250-11420
LT13.3-90-91	BETA 458628	Organic sediment: acid washes	12710 $\pm$ 40	14970-15300
LT13.3-100-101	BETA 458629	Organic sediment: acid washes	15180 $\pm$ 50	18300-18605
LT13.3-110-111	BETA 458630	Organic sediment: acid washes	18910 $\pm$ 60	22540-22990
LT13.3-120-121	BETA 458631	Organic sediment: acid washes	28520 $\pm$ 150	31835-22045
LT13.3-130-131	BETA 458632	Organic sediment: acid washes	40550 $\pm$ 500	43190-45010
LT13.3-140-141	BETA 458633	Organic sediment: acid washes	39160 $\pm$ 420	42350-43680
LT13.3-150-151	BETA 458634	Organic sediment: acid washes	42230 $\pm$ 610	44450-46680
LV2-5	BETA 373598	Organic sediment: acid washes	1800 $\pm$ 30	1820-1690
LV2-10	BETA 445943	Organic sediment: acid washes	7200 $\pm$ 30	7950-8060
LV2-20	BETA 443165	Organic sediment: acid washes	9540 $\pm$ 40	10705-10890
LV2-40	BETA 443164	Organic sediment: acid washes	12150 $\pm$ 40	13900-14165
LV2-60	BETA 443166	Organic sediment: acid washes	16830 $\pm$ 60	20085-20505
LV2-80	BETA 445944	Organic sediment: acid washes	19670 $\pm$ 70	23450-23950
LV2-100	BETA 445945	Organic sediment: acid washes	29380 $\pm$ 150	33245-33920
LV2-120	BETA 445946	Organic sediment: acid washes	34590 $\pm$ 230	38575-39670
LV2-140	BETA 443167	Organic sediment: acid washes	36470 $\pm$ 300	40430-41685
LV2-162	BETA 443168	Organic sediment: acid washes	41530 $\pm$ 540	43950-45910
LSL-17	BETA 445959	Organic sediment: acid washes	370 $\pm$ 30	425-505
LSL-50	BETA 445960	Organic sediment: acid washes	1750 $\pm$ 30	1565-1725
LSL-75	BETA 445961	Organic sediment: acid washes	2480 $\pm$ 30	2430-2720
LSL-100	BETA 445962	Organic sediment: acid washes	3280 $\pm$ 30	3450-3580
LSL-125	BETA 445963	Organic sediment: acid washes	3660 $\pm$ 30	3900-4085
LSL-150	BETA 445964	Organic sediment: acid washes	3880 $\pm$ 30	4235-4415
LSL-175	BETA 445965	Organic sediment: acid washes	5920 $\pm$ 30	6665-6800
LSL-194	BETA 445966	Organic sediment: acid washes	6800 $\pm$ 30	7590-7680
LSL-200	BETA 487413	Organic sediment: acid washes	8820 $\pm$ 30	9700-9950
LSL-220	BETA 487414	Organic sediment: acid washes	11600 $\pm$ 30	13330-13500
LSL-240	BETA 487415	Organic sediment: acid washes	11810 $\pm$ 30	13560-13740
R1-40	LACUFF 140366	Organic sediment: acid washes	1400 $\pm$ 30	1375-1280
R1-50	LACUFF 140367	Organic sediment: acid washes	3310 $\pm$ 45	3640-3450
R1-170	LACUFF 140368	Organic sediment: acid washes	10180 $\pm$ 80	12140-11590
R1-185	LACUFF 140369	Organic sediment: acid washes	10800 $\pm$ 115	12990-12530
R1-215	LACUFF 140370	Organic sediment: acid washes	13580 $\pm$ 65	16630-16145
R1-228	LACUFF 140371	Organic sediment: acid washes	18730 $\pm$ 115	22900-22380
R1-254	BETA 350937	Organic sediment: acid washes	25310 $\pm$ 130	29729-28985
R1-332	LACUFF 140374	Organic sediment: acid washes	31990 $\pm$ 250	36390-35295
R1-369	LACUFF 140375	Organic sediment: acid washes	> 35000	Uncalibrated
R1-372	BETA 347777	Organic sediment: acid washes	29510 $\pm$ 170	34025-33375
R1-390	LACUFF 140376	Organic sediment: acid washes	31010 $\pm$ 260	35510-34410

R1-488	BETA 350938	Organic sediment: acid washes	27050 ± 150	31285-30860
R1-492	LACUFF 140377	Organic sediment: acid washes	26380 ± 250	31050-29980
R2-15	LACUFF 140378	Organic sediment: acid washes	1556 ± 36	1533-1370
R2-17	LACUFF 140379	Organic sediment: acid washes	2030 ± 30	2065-1900
R2-25	LACUFF 140380	Organic sediment: acid washes	3200 ± 55	3570-3340
R2-39	LACUFF 140381	Organic sediment: acid washes	4710 ± 50	5420-5320
R2-41	BETA 363900	Organic sediment: acid washes	3480 ± 30	3835-3690
R2-72	LACUFF 140382	Organic sediment: acid washes	12550 ± 60	15145-14440
R2-74	LACUFF 140383	Organic sediment: acid washes	14920 ± 70	18340-17930
R2-121	LACUFF 140384	Organic sediment: acid washes	17430 ± 175	21560-20580
R2-123	BETA 350939	Organic sediment: acid washes	16300 ± 60	19910-19500
R2-171	LACUFF 140385	Organic sediment: acid washes	14190 ± 70	17515-17040
R2-174	LACUFF 140386	Organic sediment: acid washes	16080 ± 70	19605-19195
R2-245	LACUFF 140387	Organic sediment: acid washes	26010 ± 150	30725-29770
R2-249	BETA 347778	Organic sediment: acid washes	34440 ± 280	39625-38400
R2-259	LACUFF 140388	Organic sediment: acid washes	25570 ± 285	30525-29004
R2-261	LACUFF 140389	Organic sediment: acid washes	20170 ± 100	24500-23960
R2-267	LACUFF 140390	Organic sediment: acid washes	> 35000	Uncalibrated
R2-327	BETA 350940	Organic sediment: acid washes	> 43500	Uncalibrated
R4-11	BETA 422171	Organic sediment: acid washes	390 ± 30	510-430
R4-20	BETA 422172	Organic sediment: acid washes	940 ± 30	925-790
R4-35	BETA 408082	Organic sediment: acid washes	3120 ± 30	3400-3245
R4-45	BETA 422173	Organic sediment: acid washes	2780 ± 30	2950-2795
R4-53	BETA 408083	Organic sediment: acid washes	1940 ± 30	1950-1820
R4-65	BETA 408084	Organic sediment: acid washes	6270 ± 30	7265-7160
R4-80	BETA 422174	Organic sediment: acid washes	6070 ± 40	7020-6800
R4-95	BETA 408085	Organic sediment: acid washes	8540 ± 30	9545-9490
R5-6	BETA 422175	Organic sediment: acid washes	790 ± 30 BP	750-670
R5-40	BETA 422176	Organic sediment: acid washes	4910 ± 30 BP	5665-5690
R5-44	BETA 422177	Organic sediment: acid washes	5830 ± 30 BP	6730-6554
R5-46	BETA 422178	Organic sediment: acid washes	5630 ± 40 BP	6490-6315
R5-50	BETA 408087	Organic sediment: acid washes	9690 ± 30 BP	11203-11084
R5-60	BETA 458642	Organic sediment: acid washes	6000 ± 30 BP	6915-6770
R5-70	BETA 458643	Organic sediment: acid washes	8670 ± 30 BP	9705-9540
R5-80	BETA 458644	Organic sediment: acid washes	13100 ± 40 BP	15940-14505
R5-100	BETA 422179	Organic sediment: acid washes	27020 ± 120 BP	31249-30863
R5-110	BETA 422180	Organic sediment: acid washes	22820 ± 80 BP	27426-26963
R5-130	BETA 422181	Organic sediment: acid washes	25250 ± 100 BP	29596-28984
R5-141	BETA 422182	Organic sediment: acid washes	20850 ± 80 BP	25480-24869
R5-180	BETA 408086	Organic sediment: acid washes	32000 ± 190 BP	36313-35452
ST2-20	BETA 434411	Organic sediment: acid washes	880 ± 30	835-730
ST2-35	BETA 434412	Organic sediment: acid washes	2350 ± 30	2460-2325
ST2-65	BETA 434413	Organic sediment: acid washes	7240 ± 30	8160-7995
ST2-75	BETA 434414	Organic sediment: acid washes	9010 ± 40	10245-10150
ST2-110	BETA 434415	Organic sediment: acid washes	25020 ± 110	29400-28750
ST2-120	BETA 434416	Organic sediment: acid washes	17140 ± 60	20885-20485
ST2-145	BETA 434417	Organic sediment: acid washes	14500 ± 50	17880-17495
ST2-148	BETA 434418	Organic sediment: acid washes	30400 ± 160	34720-34045
ST2-185	BETA 434419	Organic sediment: acid washes	33490 ± 210	38475-37020
ST2-195	BETA 434420	Organic sediment: acid washes	34560 ± 250	39675-38530



ST2-230	BETA 434421	Organic sediment: acid washes	34610 ± 250	39720-38565
ST2-250	BETA 434422	Organic sediment: acid washes	27320 ± 130	31410-31015
LB3-15	BETA 443145	Organic sediment: acid washes	115.8 ± 0.3 pMC	Uncalibrated
LB3-30	BETA 445956	Organic sediment: acid washes	20 ± 30	75-35
LB3-50	BETA 443146	Organic sediment: acid washes	1340 ± 30	1305-1235
LB3-75	BETA 443174	Organic sediment: acid washes	1050 ± 30	1005-925
LB3-100	BETA 443147	Organic sediment: acid washes	1150±30	1150-980
LB3-126	BETA 443148	Organic sediment: acid washes	3550 ± 30	3925-3810
LB3-145	BETA 443149	Organic sediment: acid washes	15530 ± 60	18915-18645
LB3-162	BETA 445957	Organic sediment: acid washes	22430 ± 80	27085-26430
LB3-185	BETA 443150	Organic sediment: acid washes	22470 ± 80	27110-26480
LB3-223	BETA 445958	Organic sediment: acid washes	35900 ± 280	41205-39875
LB3-240	BETA 443151	Organic sediment: acid washes	27140 ± 130	31315-30920
LB4 - 25	BETA 443157	Organic sediment: acid washes	1790 ± 30	1820-1690
LB4 - 50	BETA 443158	Organic sediment: acid washes	2510 ± 30	2645-2490
LB4 - 75	BETA 443159	Organic sediment: acid washes	4020 ± 30	4535-4420
LB4 - 98	BETA 443160	Organic sediment: acid washes	5040 ± 30	5900-5715
LB4 - 110	BETA 443161	Organic sediment: acid washes	8680 ± 40	9710-9540
LB4 - 130	BETA 443162	Organic sediment: acid washes	10500 ± 40	12590-12380
LB4 - 150	BETA 443163	Organic sediment: acid washes	11340 ± 40	13280-13095
LTM-10	BETA 422163	Organic sediment: acid washes	127.0 ± 0.3 pMC	Uncalibrated
LTM-25	BETA 464281	Organic sediment: acid washes	670 ± 30	630-675
LTM-35	BETA 434424	Organic sediment: acid washes	860 ± 30	695-800
LTM-55	BETA 422164	Organic sediment: acid washes	790 ± 30	670-750
LTM-75	BETA 434425	Organic sediment: acid washes	1130 ± 30	960-1090
LTM-95	BETA 464282	Organic sediment: acid washes	2000 ± 30 BP	1880-2005
LTM-110	BETA 422170	Organic sediment: acid washes	2010 ± 30 BP	1885-2010
LTM-112	BETA 422165	Organic sediment: acid washes	2360 ± 30	2330-2470
LTM-133	BETA 422166	Organic sediment: acid washes	14780 ± 50 BP	17815-18160

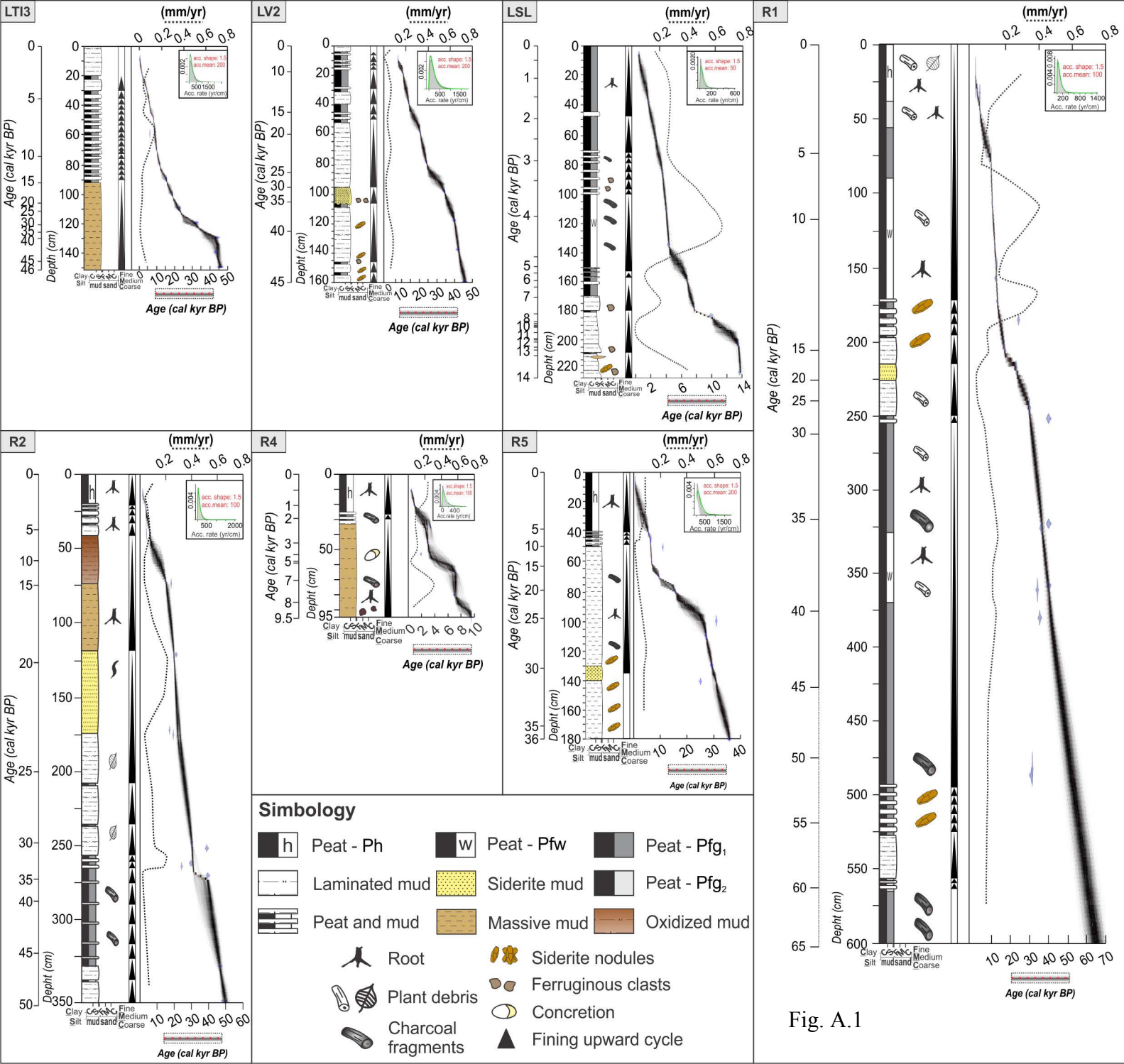
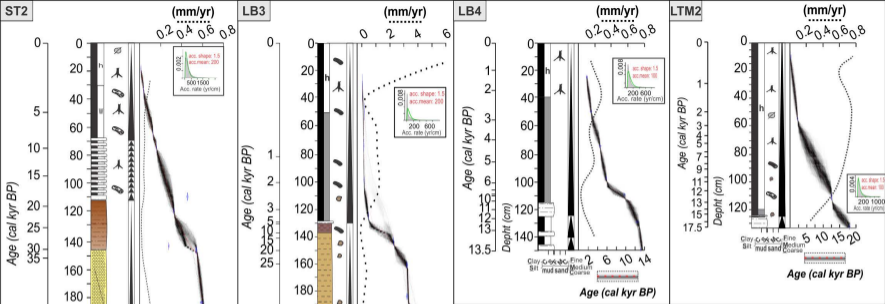


Fig. A.1



### Simbology



Fig. A.2