

SUPPLEMENTAL MATERIAL

Why the monophyly of Nymphaeaceae currently remains indeterminate: An assessment based on gene-wise plastid phylogenomics

Michael Gruenstaeudl^{1*}

¹ Institut für Biologie, Freie Universität Berlin, 14195 Berlin, Germany

* m.gruenstaeudl@fu-berlin.de

Figure S1. Results of the gene-wise phylogenetic reconstructions under the ML inference criterion on each of the 78 protein-coding plastome genes under study. Bootstrap support values are given above the branches. For easier viewing, all taxa of the Nymphaeaceae are indicated by a red bar to the right of their taxon names.

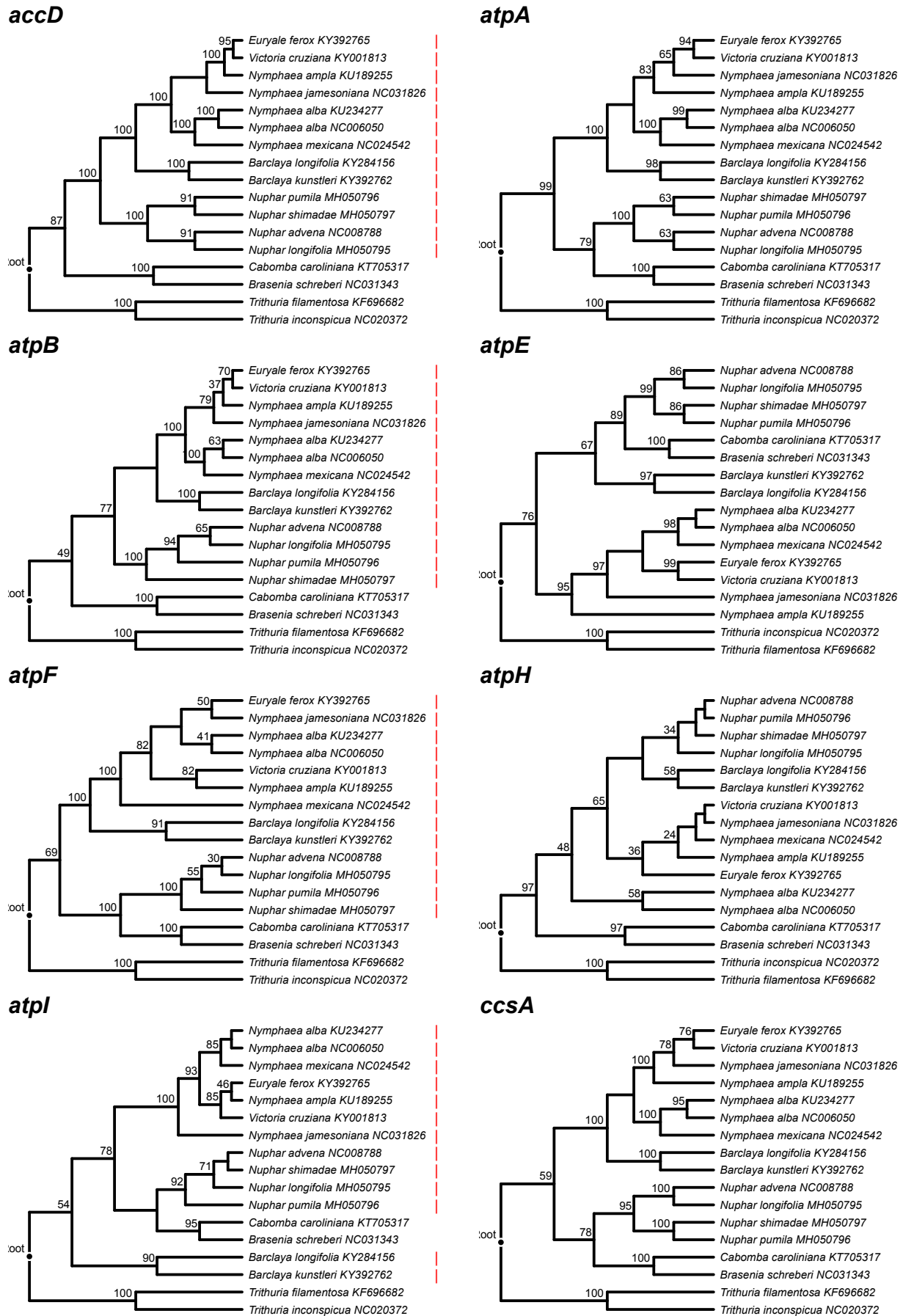
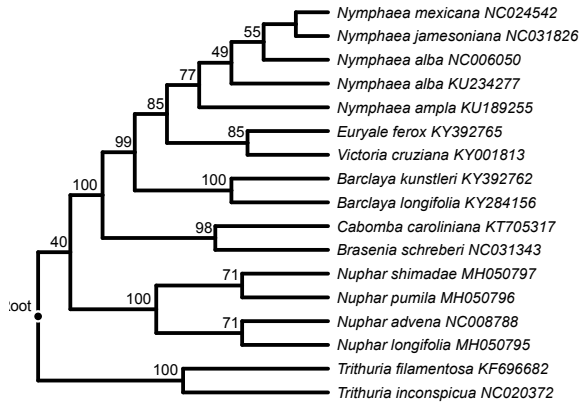
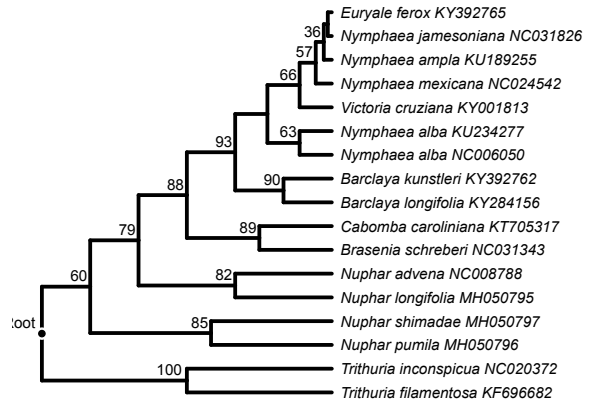


Figure S1

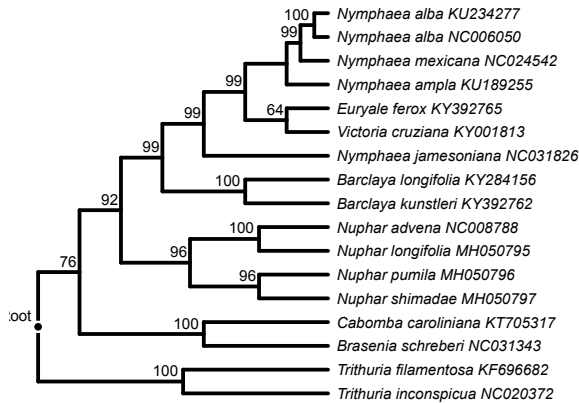
cemA



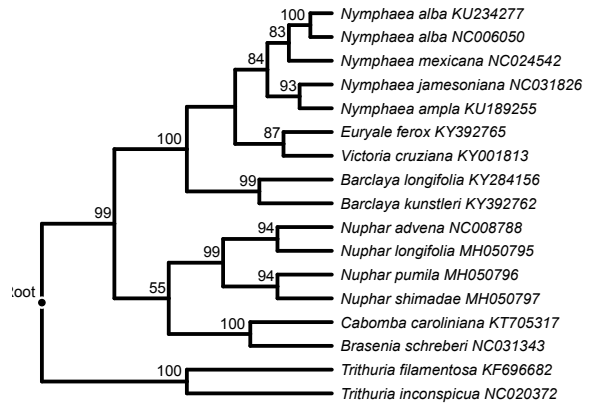
infA



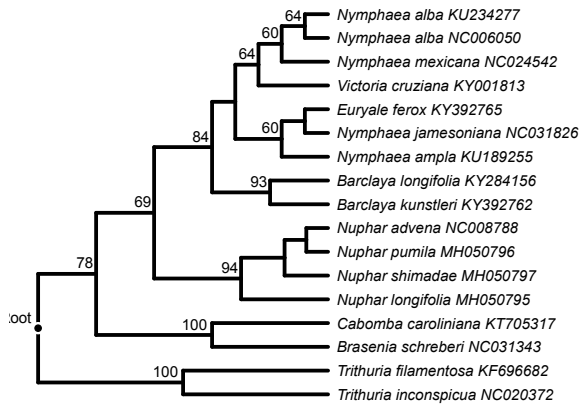
matK



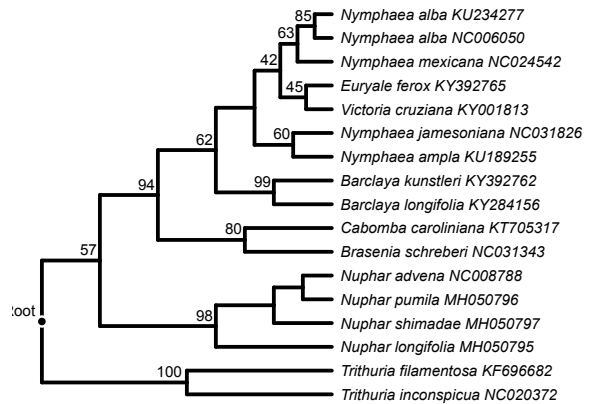
ndhA



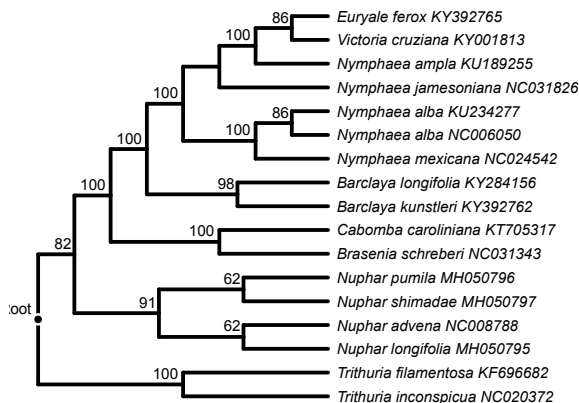
ndhB



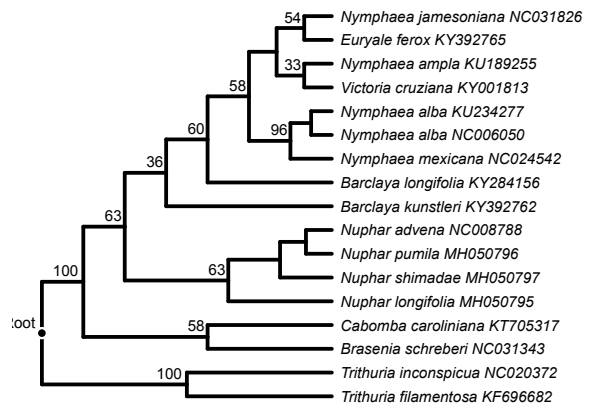
ndhC



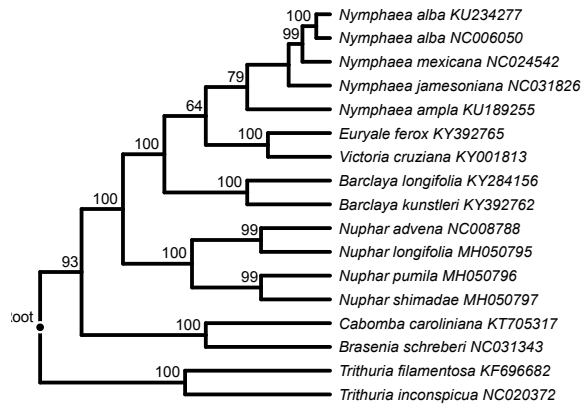
ndhD



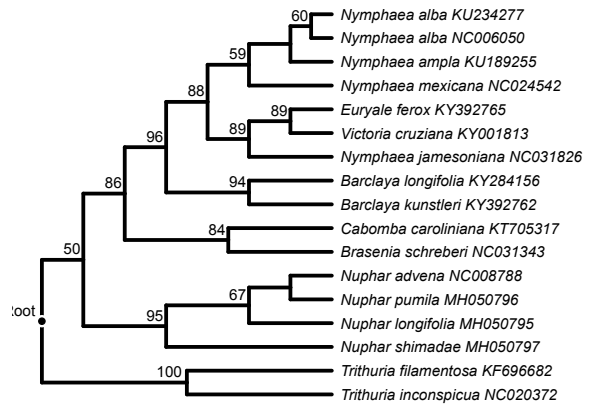
ndhE



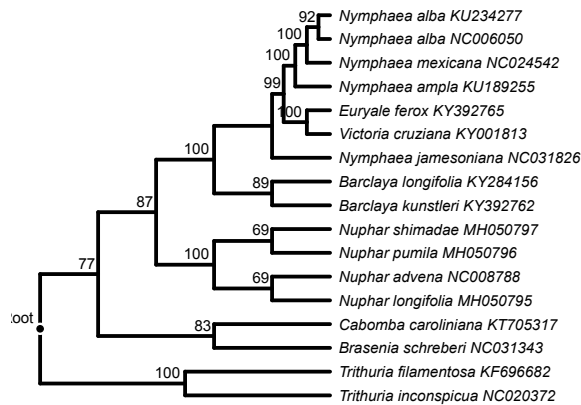
ndhF



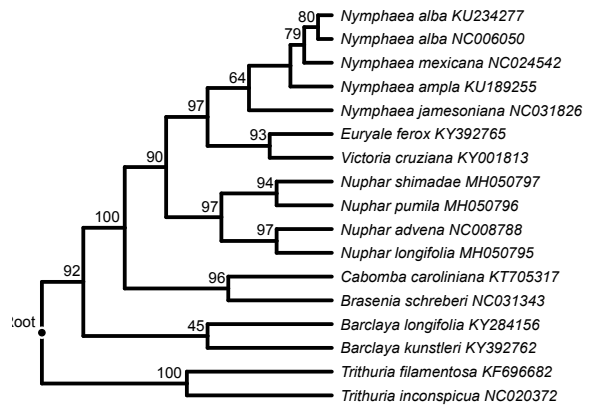
ndhG



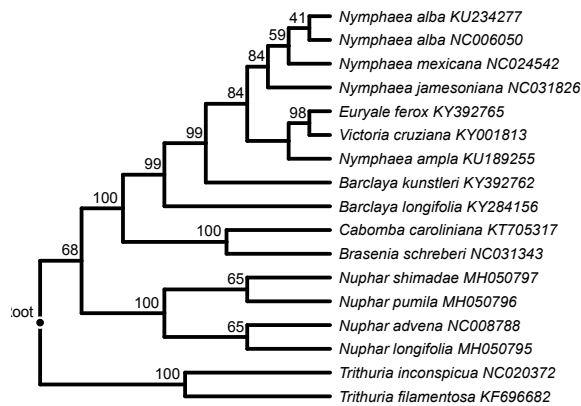
ndhH



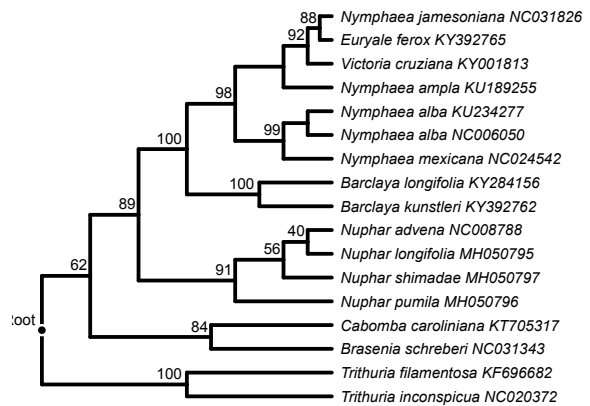
ndhI



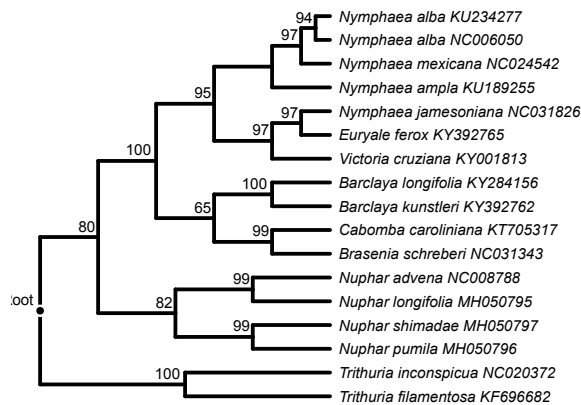
ndhJ



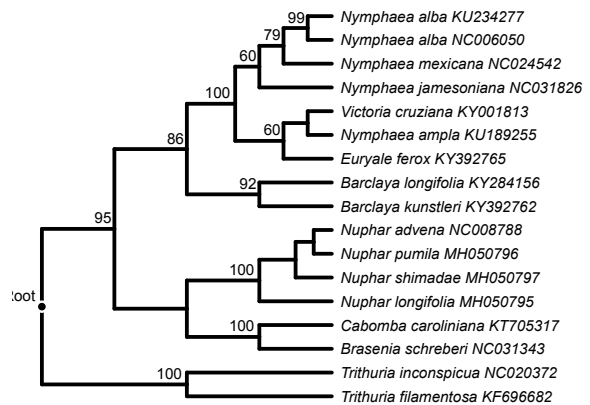
ndhK

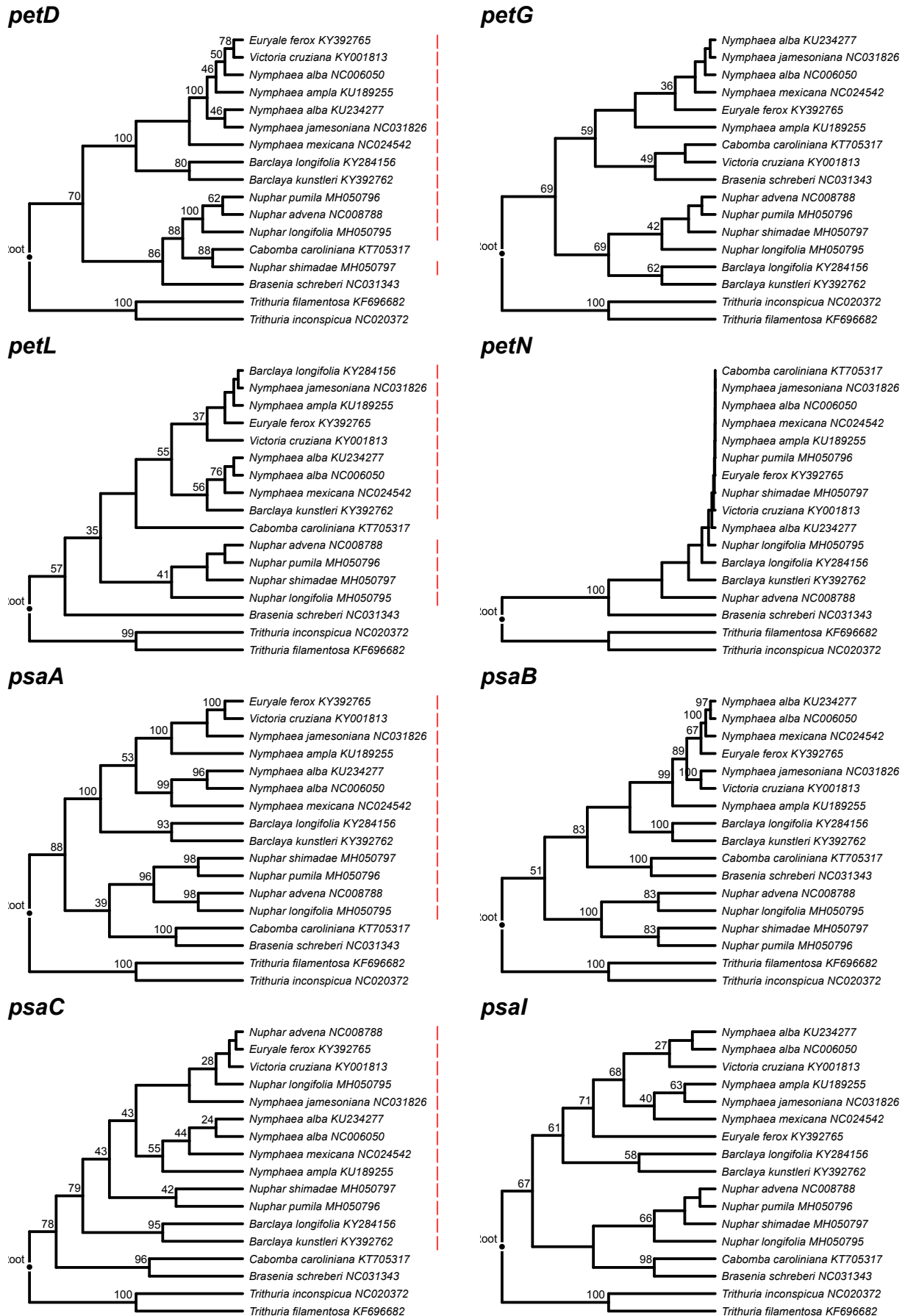


petA

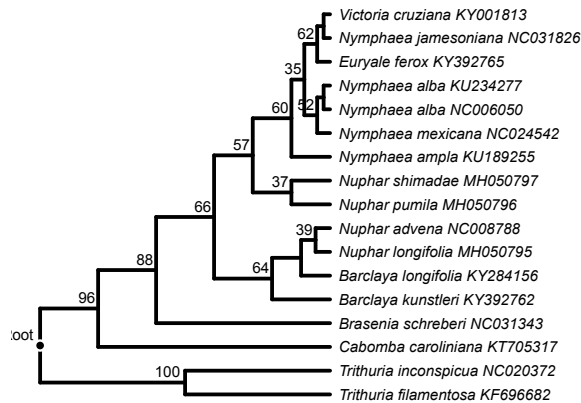


petB

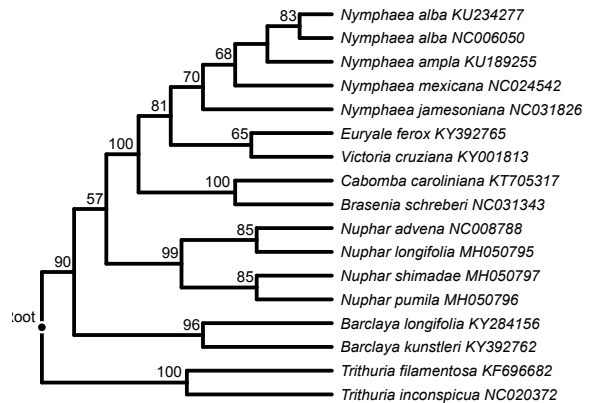




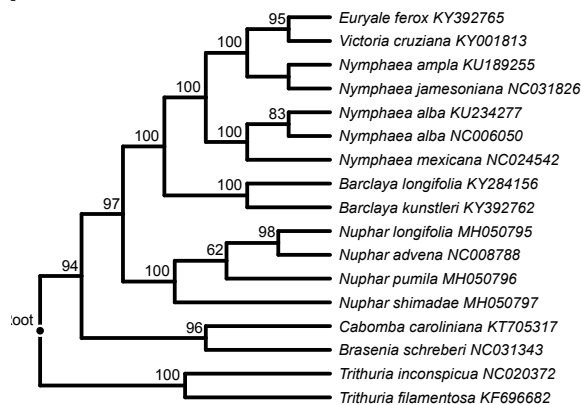
psaJ



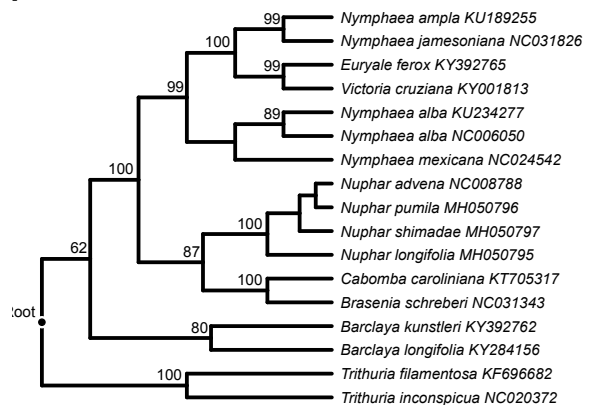
psbA



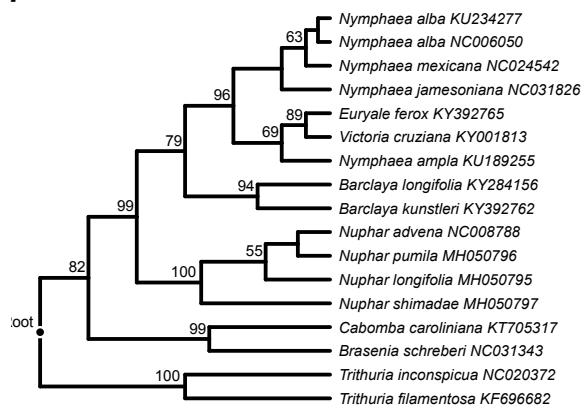
psbB



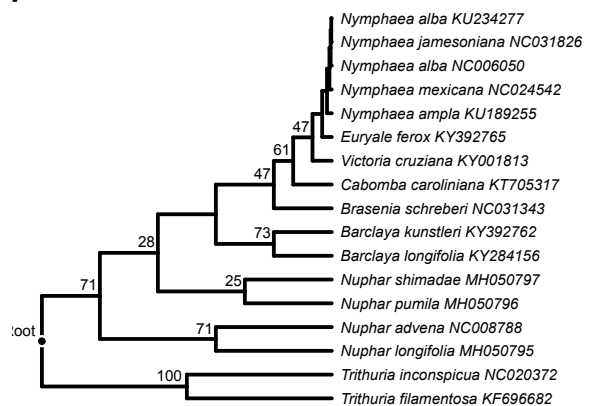
psbC



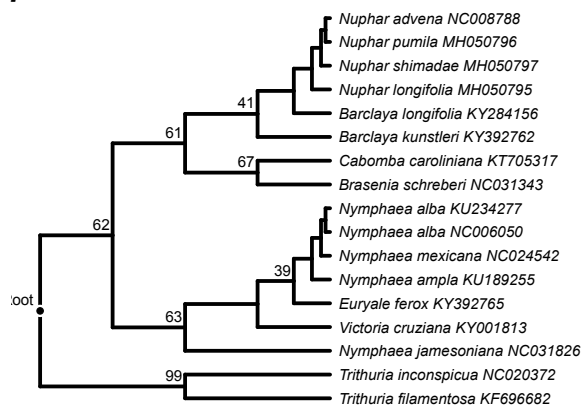
psbD



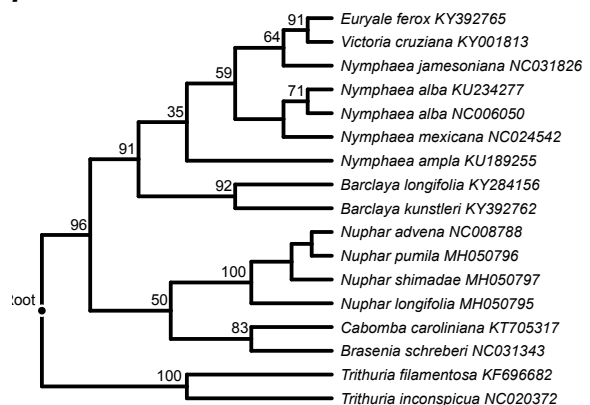
psbE



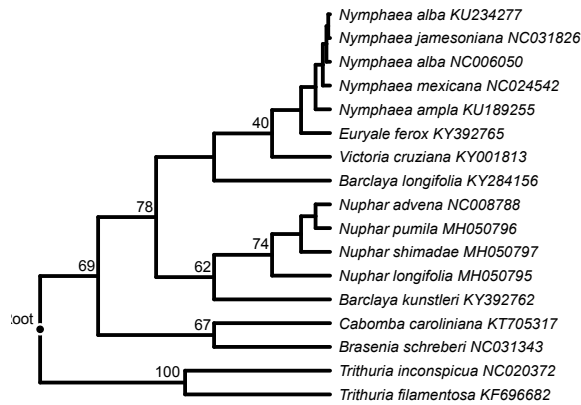
psbF



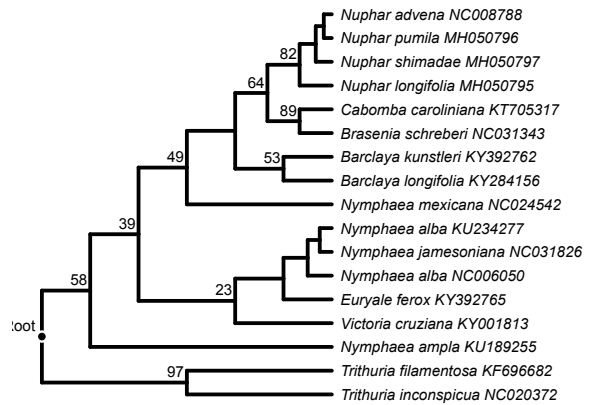
psbH



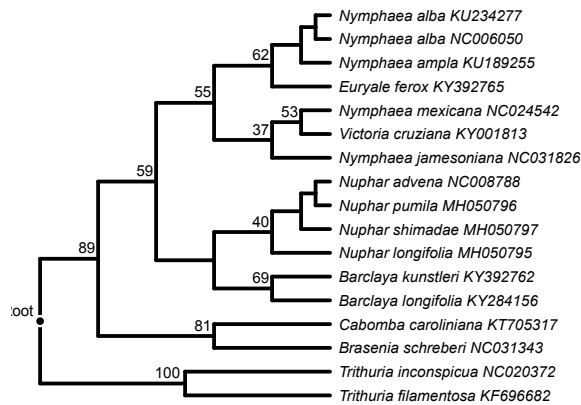
psbI



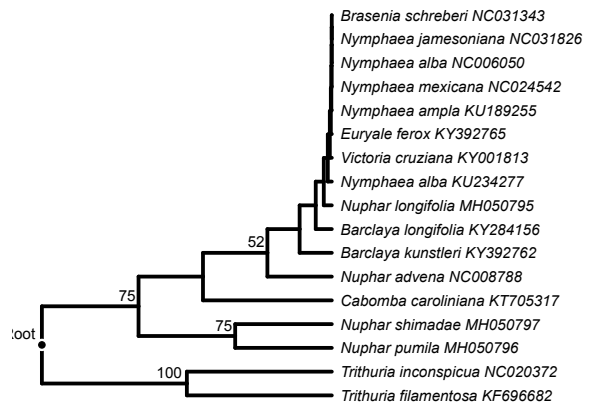
psbJ



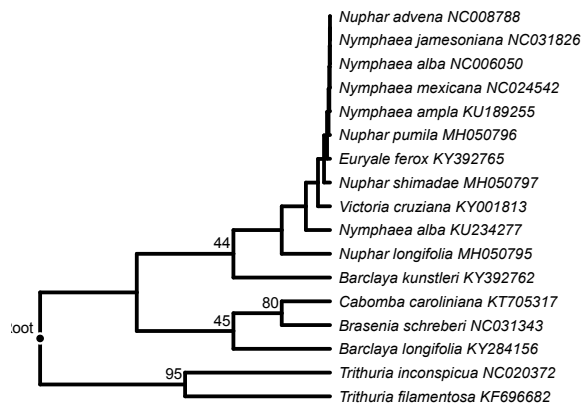
psbK



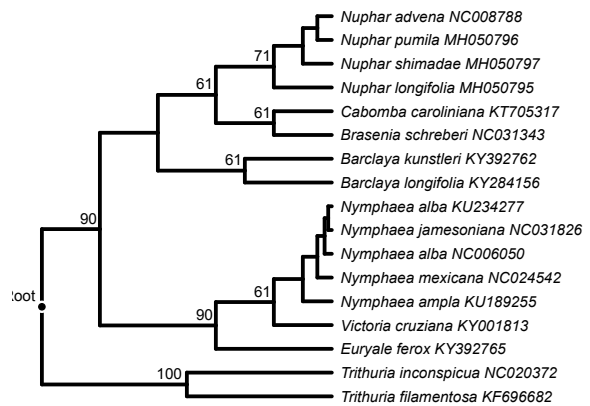
psbL



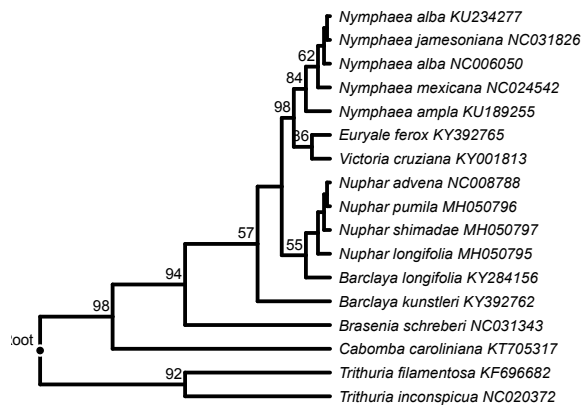
psbM



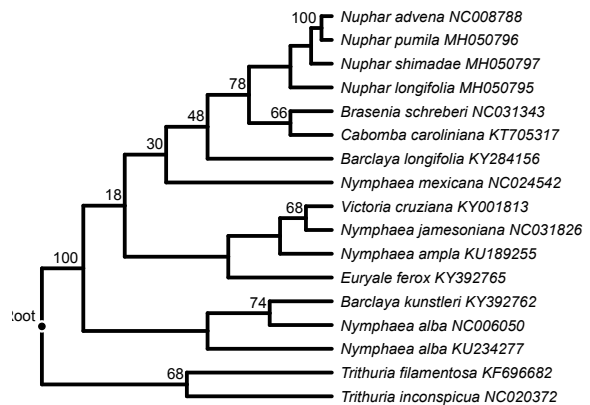
psbN



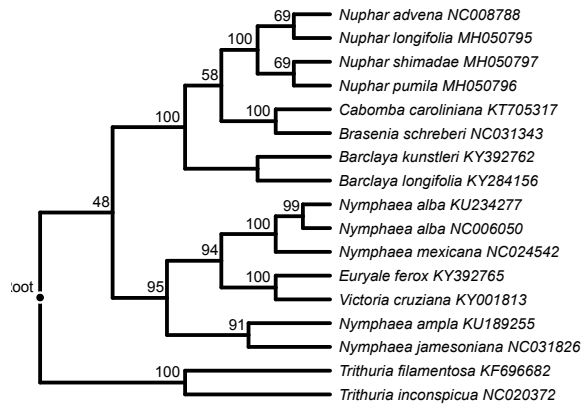
psbT



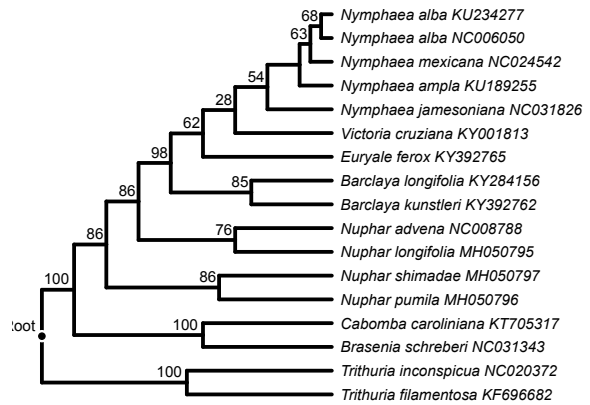
psbZ



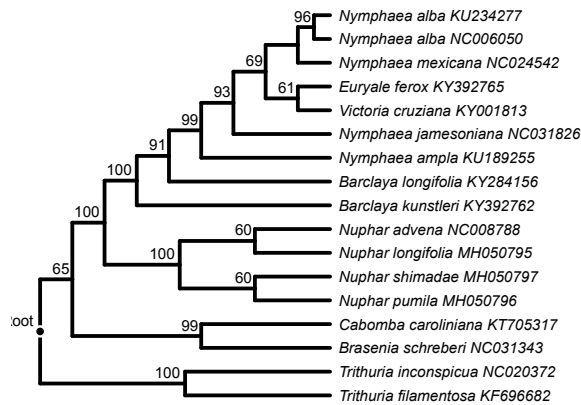
rbcL



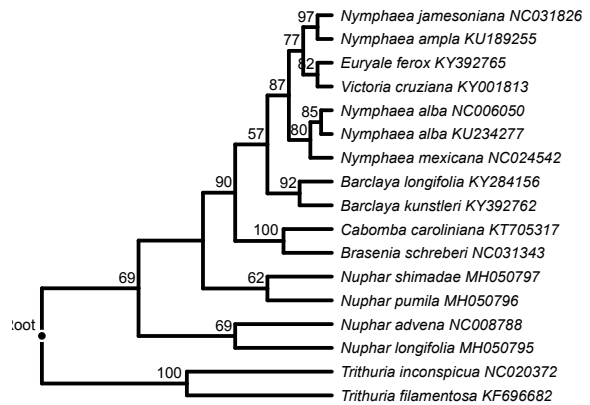
rpl14



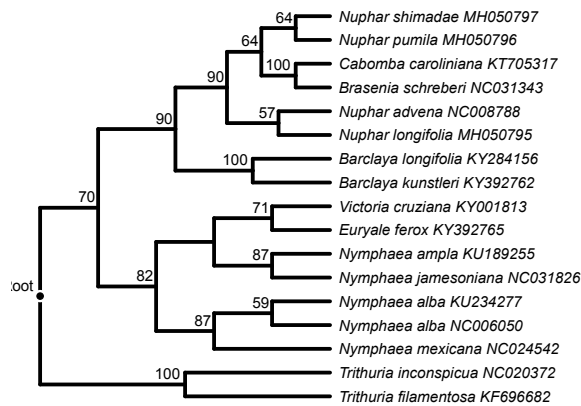
rpl16



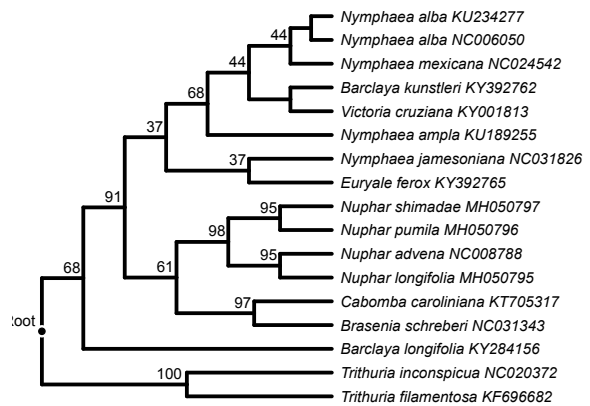
rpl2



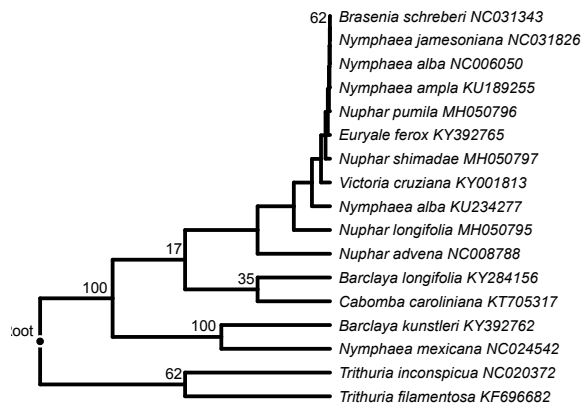
rpl20



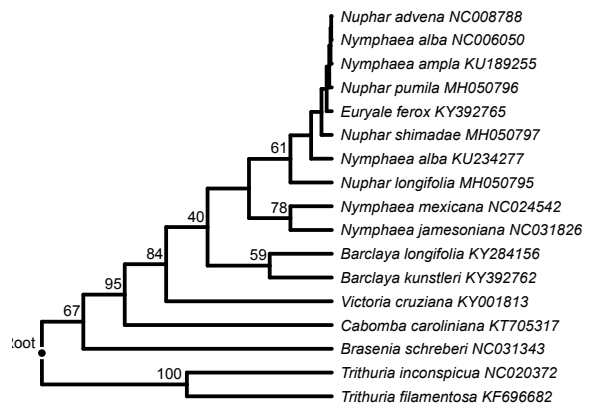
rpl22



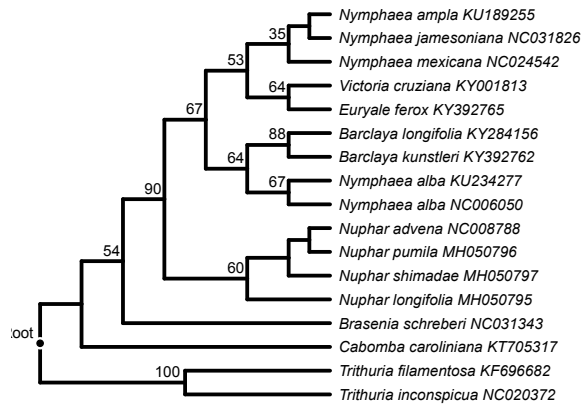
rpl23



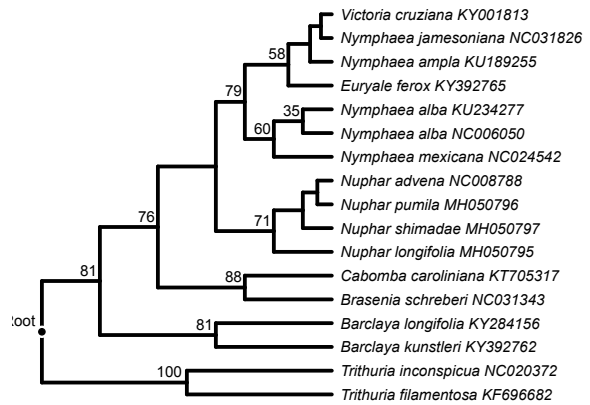
rpl32



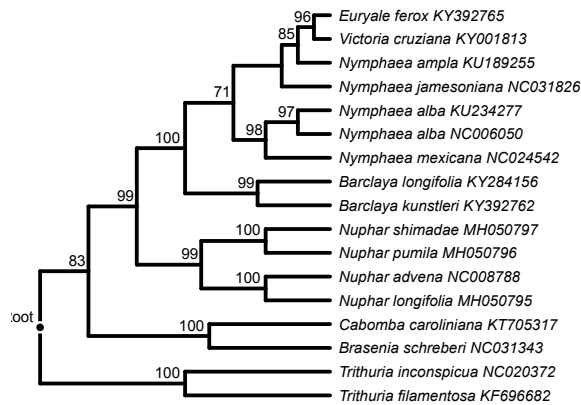
rpl33



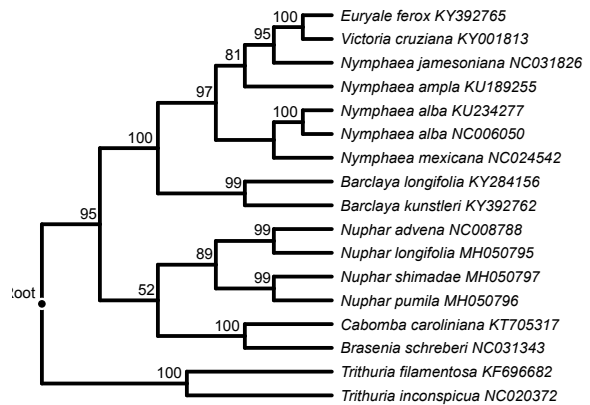
rpl36



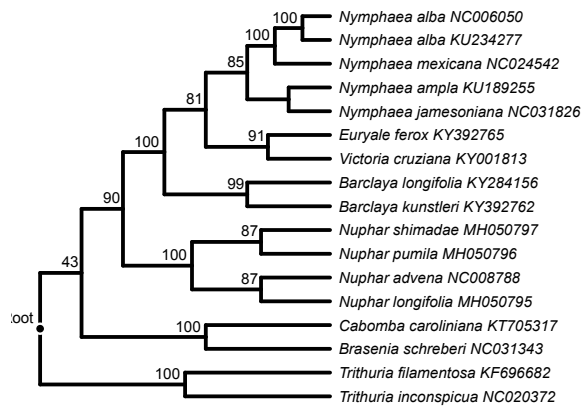
rpoA



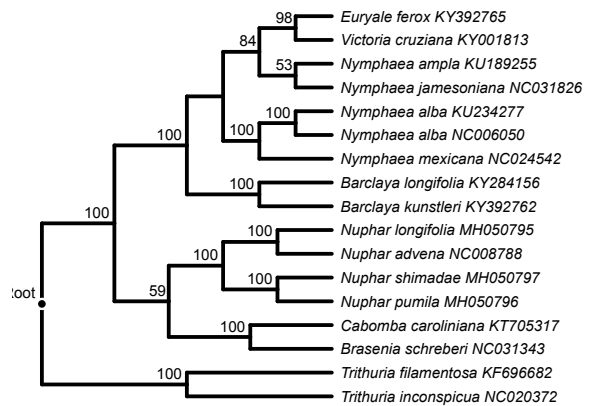
rpoB



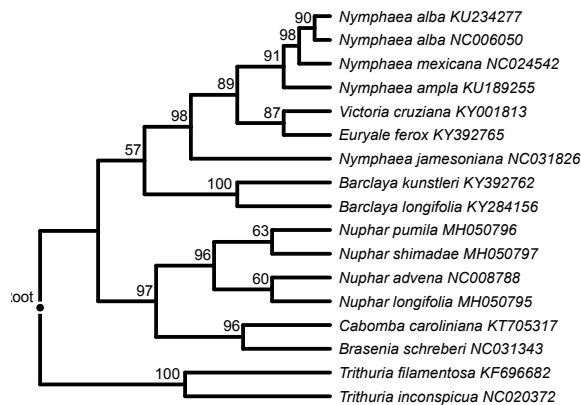
rpoC1



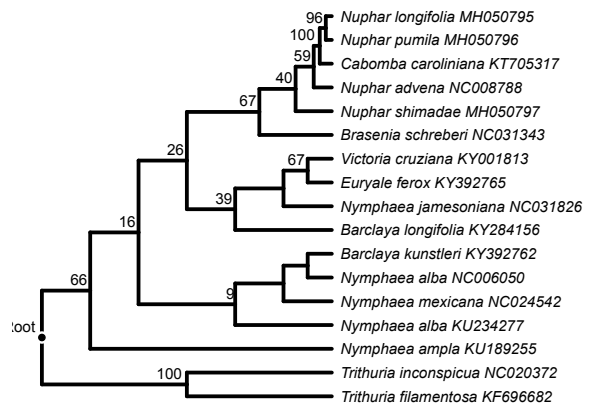
rpoC2



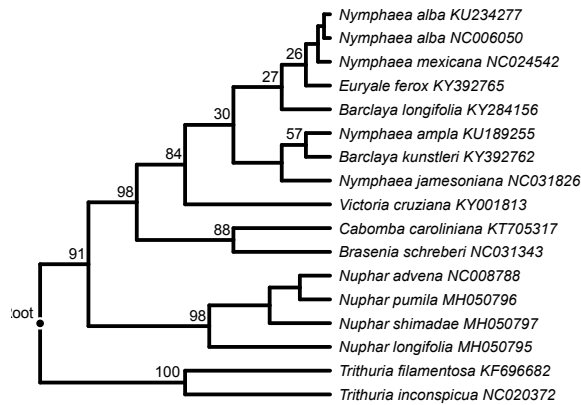
rps11



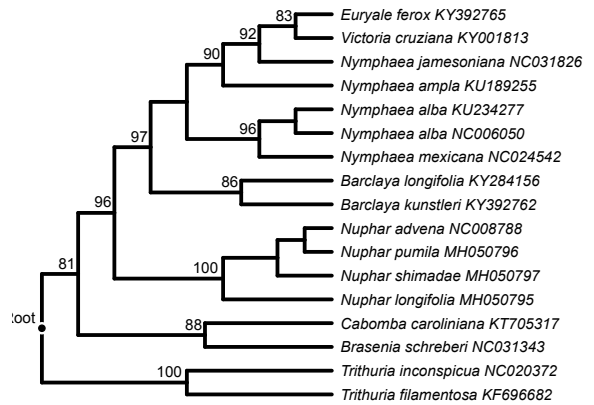
rps12



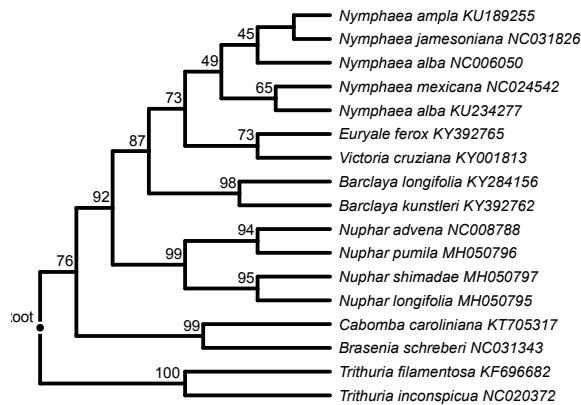
rps14



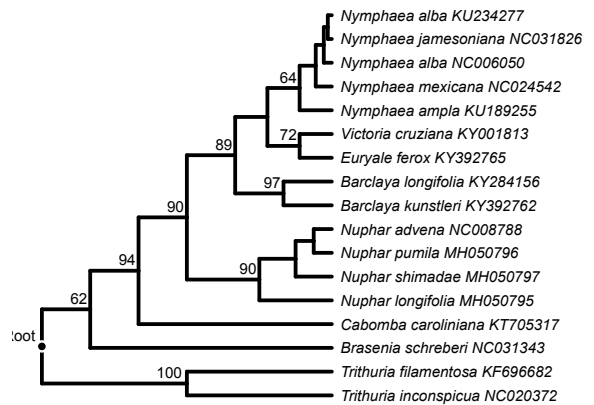
rps15



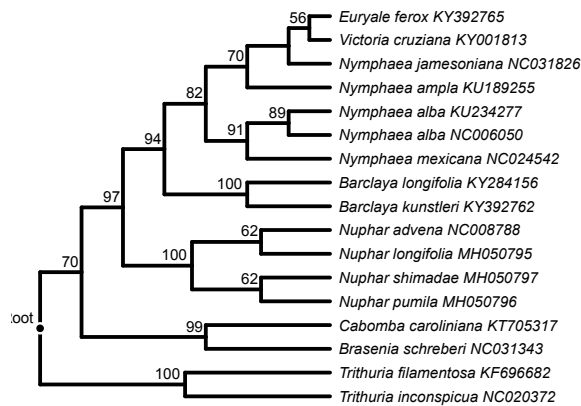
rps16



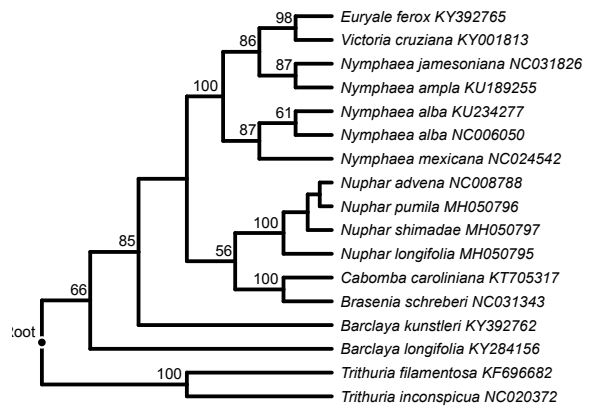
rps18



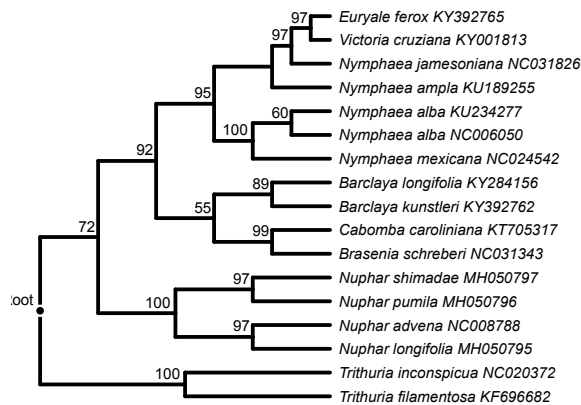
rps19



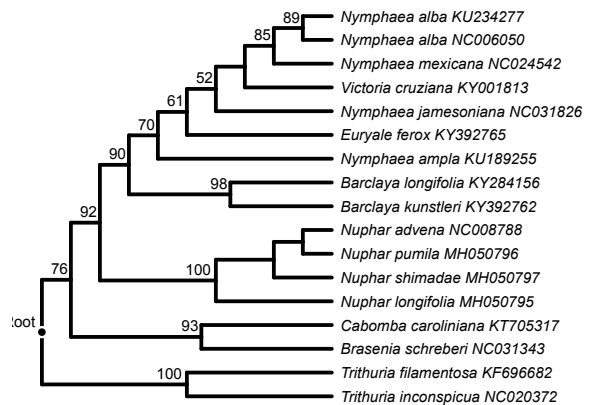
rps2



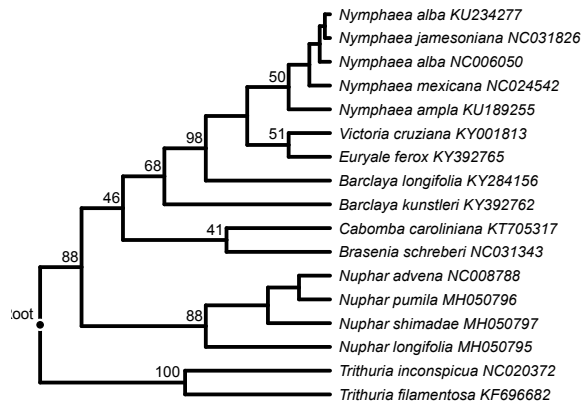
rps3



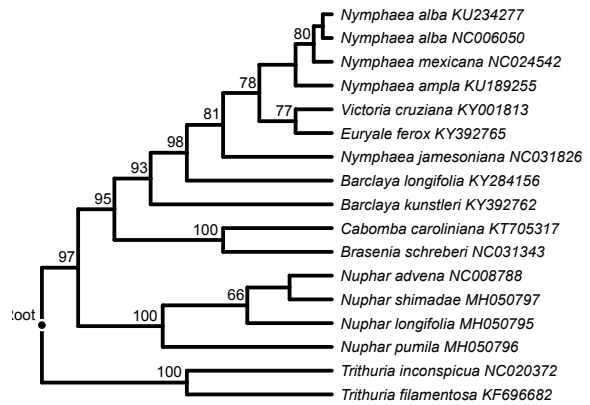
rps4



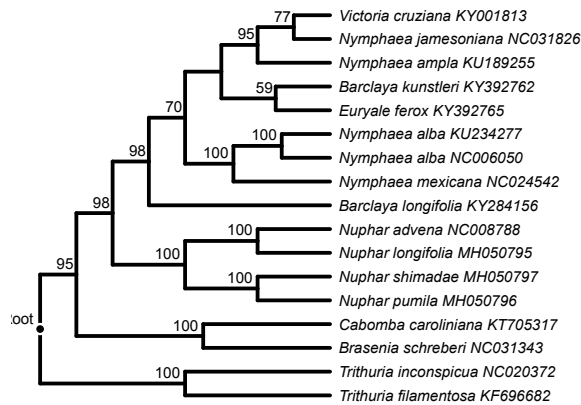
rps7



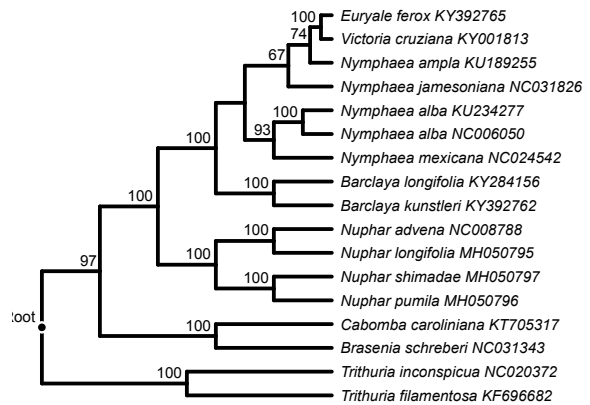
rps8



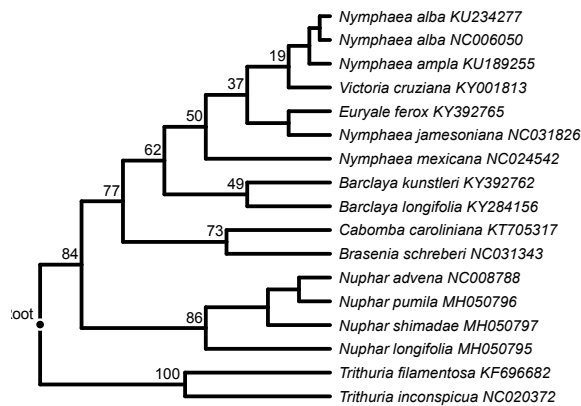
ycf1



ycf2



ycf3



ycf4

