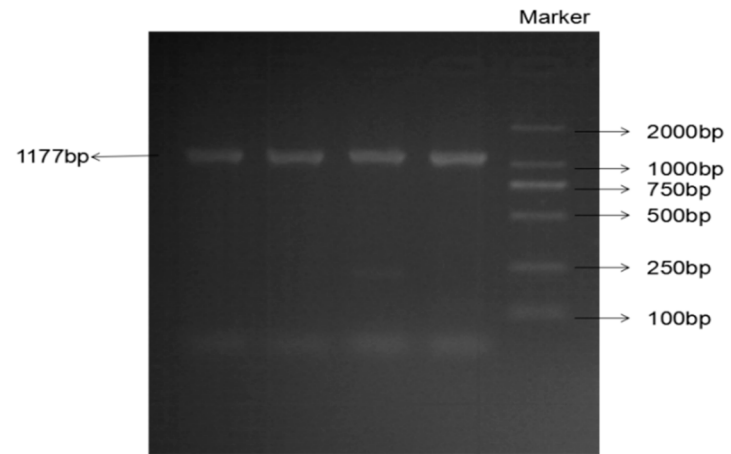


**Table S1.** Primers information for PCR amplification of bovine *KCNJ12* gene.

<b>Primer name</b>	<b>Primer sequences (5'-3')</b>	<b>Position (AC_000176)</b>	<b>Amplicon size (bp)</b>
P1	F: AGCCTGGGATCAGATAGCAGC R: CACTCGCCAGCGGAGAACA	35955547-35956420	874
P2	F: GCTCCGACTTCATAGGGT R: TGGGTGGTCAAGCGTGTA	35982793-35983704	912
P3	F: GATGGAGGCGTGGAGGTT R: CGTCTTGTGGAAATGCGAGT	35989184-35990360	1177
P4	F: GTCACGGAGGAGGGCGAGTA R: CGGCACCATCAGGCACAT	35990025-35991193	1169
P5	F: CATAGGCTGCTGGTGGGT R: GGAGGGAAGAGGCTCAGTT	35953344-35953813	470
P6	F: CCATTTGCTGGAACGTCTC R: CCAGTCTGAACCCTTGCTC	35953663-35954559	897
P7	F: AAGCCATCCTCCTTGTTAGA R: GGACTCCTTTCCCGTTGC	35954370-35854917	548
P8	F: GAGGAGCACAGAAAGAAAGCA R: GGGGAGAAAGGGGAGAAAA	35954788-35956017	1230
P9	F: TTCGGCTTTCTCAATCTTAG R: GTTCAGCATCAGGGCATAG	35990978-35991792	815
P10	F: CACAGGCTTGTTCTTGATGG R: GGGCACTAAAGAGGGAGAC	35991909-35992711	803
P11	F: AAAGGGTCAATCCCAAGC R: TCCAGGAAAAGCCGTCAC	35992251-35993157	907



**Figure S1.** Amplification of *KCNJ12* using P3 primers.