

Article

Energy pile field simulation in large buildings: validation of surface boundary assumptions

Andrea Ferrantelli ^{1,*} , Jevgeni Fadejev ^{1,2} and Jarek Kurnitski ^{1,2} 

¹ Tallinn University of Technology, Department of Civil Engineering and Architecture, Ehitajate tee 5, 19086 Tallinn, Estonia; andrea.ferrantelli@taltech.ee (A.F.)

² Aalto University, Department of Civil Engineering, P.O.Box 12100, 00076 Aalto, Finland; jevgeni.fadejev@taltech.ee (J.F.); jarek.kurnitski@taltech.ee (J.K.)

* Correspondence: andrea.ferrantelli@taltech.ee

Abstract: As the energy efficiency demands for future buildings become increasingly stringent, preliminary assessments of energy consumption are mandatory. These are possible only through numerical simulations, whose reliability crucially depends on boundary conditions. We therefore investigate their role in numerical estimates for the usage of geothermal energy, performing annual simulations of transient heat transfer for a building employing a geothermal heat pump plant and energy piles. Starting from actual measurements, we solve the heat equations in 2D and 3D using COMSOL Multiphysics and IDA-ICE, discovering a negligible impact of the multiregional ground surface boundary conditions. Moreover, we verify that the thermal mass of the soil medium induces a small vertical temperature gradient on the piles surface. We also find a roughly constant temperature on each horizontal cross-section, with nearly identical average values when either integrated over the full plane or evaluated at one single point. Calculating the yearly heating need for an entire building, we then show that the chosen upper boundary condition affects the energy balance dramatically. Using directly the pipes' outlet temperature induces a 54% overestimation of the heat flux, while the exact ground surface temperature above the piles reduces the error to 0.03%.

Keywords: energy piles; validation; floor slab heat loss; energy; computer simulations

1. Introduction

According to the European Parliament directive 2010/31/EU [1], each and every new construction should be nearly zero-energy buildings (nZEB) by the end of 2020. Such a requirement clearly demands an extensive use of renewable sources. A recent review [2] on the utilization of geothermal energy [3,4] revealed that, by 2015, 49 countries invested over 20 billion USD in geothermal plants, which resulted in energy savings of ca 52.5 million tonnes of equivalent oil. This prevented respectively 46 and 148 million tonnes of carbon and CO₂ from being released into the atmosphere every year. Furthermore, the installed ground-source heat pump capacity grew 1.51 times from 2010 to 2015.

Ground-source heat pumps utilize ground heat exchangers (GHE) [5–7] to exploit geothermal energy. In buildings with pile foundations, installation of heat exchange piping into such piles enables them to perform as a GHE; the resulting systems are known as geothermal energy piles [8]. Their immediate advantage is that installation of heat exchange piping into a foundation pile is much cheaper than drilling a new borehole, therefore energy piles tend to be a very cost effective GHE solution.

Heat exchange processes occurring in boreholes are object of continuous studies from many different sides; a more refined design can reduce installation costs and improve heat transfer and heat pump efficiency (see for instance the reviews [9,10] and references quoted therein). Specifically, the physical processes involved can be addressed at various levels: from heat transfer into the soil to heat transport within the heat exchanger and the absorber pipes, investigating the role of design geometry, quantifying thermal interactions in multiple borehole fields etc. [10–12]. Classical analytical models include line-source [13] and cylindrical-source [14] solutions, which tend however to make too strong

approximations, such as infinitely extended line sources and a constant heat flux inside an infinite and homogeneous medium. These could be extended in several ways though [12,15,16], from analytical *g-functions* [17] to superposition of thermal response functions (the so-called Hellström approach) [18,19]. Unfortunately, unavoidable approximations (such as constant wall temperatures) still limit the predictive power of these models [10,12].

Numerical computations can instead relax many assumptions that are generally needed to solve analytical models [20,21]. The geometry in particular can be more complex, accounting for finite lengths, thermal interaction of the heat exchangers, multilayer soil [22] and inclusion of the ground water flow [23,24]. A large number of different software types is being used in these investigations. Finite difference methods (FDM) used by TRNSYS [17,25] and IDA-ICE [26–29] are widely adopted, due to their ability to account for variable ground surface temperatures [30,31]. In some recent approaches, these can even be combined with probabilistic analysis [32].

The Finite Element Method (FEM) [33–35] is extensively used as well, for instance with ABAQUS [36–38] or COMSOL Multiphysics [39–42]. Several sensitivity studies assess design issues such as the role of heat exchanger configurations with a given energy pile, or the spacing and configuration of an energy pile group [43] and its vertical displacement [44]. FEM modelling is also used for developing analytical GHE heat transfer models [11,45], and Computational Fluid Dynamics (CFD) allows e.g. comparison of different types of ground heat exchangers [46]. Finally, thermomechanical effects that are induced on the heat exchanger constitute an emergent and promising field of investigation [47,48]. Experimental research is very active as well, on each and every level, providing empirical support and validation to both analytical and numerical models [10,49].

Despite a number of encouraging results, even in the numerical modelling of GHE a number of issues still need to be addressed [10,12,50]. In this paper we are mostly concerned with the assessment of variable ground surface temperatures. In the case of energy piles, this is generally described as the surface temperature of the building floor slab, which is assumed to coincide with the indoor air temperature. The soil region surrounding the building floor slab is exposed to outdoor air temperature, which unfortunately cannot be modelled in TRNSYS nor IDA-ICE due to lack of implementation [12,27]. Hypothetically, heat transfer in the soil region surrounding the building should affect the soil temperature development underneath, altering the heat transfer between the energy piles and, ultimately, their thermal yield. However, according to the present literature, the transient soil temperature profile still needs to be quantified.

Clearly, since the floor heat loss and temperature profile right under the concrete slab (or floor) are crucial for the correct implementation of energy pile analyses, one should pay particular attention to the upper boundary condition. One first objective of this study was indeed to quantify how the soil temperature and the energy piles thermal yield are affected by heat transfer processes in the soil region surrounding the building. This was accomplished numerically with COMSOL Multiphysics [33], which as remarked above, uses a finite element method (FEM). We first validate this specific FEM numerical model against measured data from an undisturbed reference energy pile of an office building called Innova 2, located in Jyväskylä, Finland.

Such validation is then used in simulations of heat transfer for a multi-pile system under a building, to investigate how the heat transfer processes depend on different temperature boundary conditions (b.c.) at the surface (multiregional or floor slab). We find that assuming a simple floor slab gives virtually no different result than a more complex multiregional b.c. proposed in [12], which can be safely disregarded in practical studies.

Another known bottleneck of energy piles modelling in IDA-ICE, prior to the November 2017 release, is the lack of calculated ground surface temperature as disturbed by the operation of an energy piles plant [27]. Such temperature constitutes the boundary condition in the floor slab model of a zone located directly above the energy piles. Since operation of the heat pump in heating mode cools the soil, heat losses in the floor slab increase the building heating need. To account for this phenomenon, a

rough estimate of the disturbed ground surface temperature¹ was applied in [27]. However, up to now the accuracy of such rough estimation was still unknown.

In this work we attempt to fill this gap by means of analogous calculations performed with a new version of IDA-ICE and with COMSOL. We define a borehole model for 20 energy piles, and compare the effect of two distinct upper boundary conditions: i) energy piles outlet temperature - "IDA-ICE outlet", and ii) ground surface temperature - "IDA-ICE slab". We find that the heat flux through the floor and the yearly energy demand computed according to i) are overestimated by 54% and 5% respectively, in comparison with ii), which is adopted both in COMSOL and in the updated version of IDA-ICE. Furthermore, when using the ground surface temperature as in case ii), differences in the thermal yield between the two software are found to be quantitatively negligible.

Nomenclature	
ρ	Density [kg/m ³]
c_p	Specific heat at constant pressure [kJ/(kgK)]
T	Temperature [°C]
λ	Thermal conductivity [W/(mK)]
Δt	Time step [hr]

The present paper is organized as follows: in Section 2 we define a 3D COMSOL model for a single energy pile, and validate it against measured data; in Section 3 a 2D reduction of the previous model performs ground surface boundary analysis for multiple energy piles. In Section 4 we validate an IDA-ICE energy piles model against a 3D COMSOL computation extended to multiple piles, and finally in Section 5 we compare the effect of different boundary conditions on a calculation of yearly energy demand. Our findings are then discussed in the Conclusions.

2. Validation of a COMSOL model for a single pile against measured data

In this section we discuss the validation of an FEM-based numerical simulation, performed with the software COMSOL Multiphysics. This preliminary was necessary as we use the same setup in the energy pile heat transfer analysis discussed in the rest of the paper, Sections 3, 4 and 5.

2.1. Method

The first building with pile foundation used as GHE in Finland is an office building called Innova 2, built in summer 2012 in Jyväskylä. The geothermal heat pump plant is equipped with energy meters and two piles of foundation, with temperature sensors placed along the depth.

Additionally, a reference energy pile located near the building measures the undisturbed soil temperature with 11 sensors installed along its depth, as in Table 1. In our COMSOL simulation, we modelled precisely this isolated energy pile, together with its surrounding soil layers. The temperatures calculated in the model were logged from the location of each sensor of the reference pile. Depth, density ρ and thermal conductivity λ of each layer were measured on site [51]. The specific heat c_p was obtained instead by combining dry specific heat values from [52,53] with the measured humidity content of each soil layer, again obtained from [51], assuming a value 4.2 kJ/kgK for the water specific heat². As illustrated in Fig.1, the reference pile was modelled per measurements as a 22m-long concrete cylinder, with $\lambda=1.8$ W/mK, $\rho=2400$ kg/m³ and $c_p=900$ kJ/kgK, and diameter 170 mm. It was embedded in a 10mx10m, 26.7m deep multilayer block with material properties listed in Table 2.

¹ In this paper we will refer to this earlier method as "IDA-ICE outlet".
² We will comment on the effect of this uncertainty on the results in the next section.

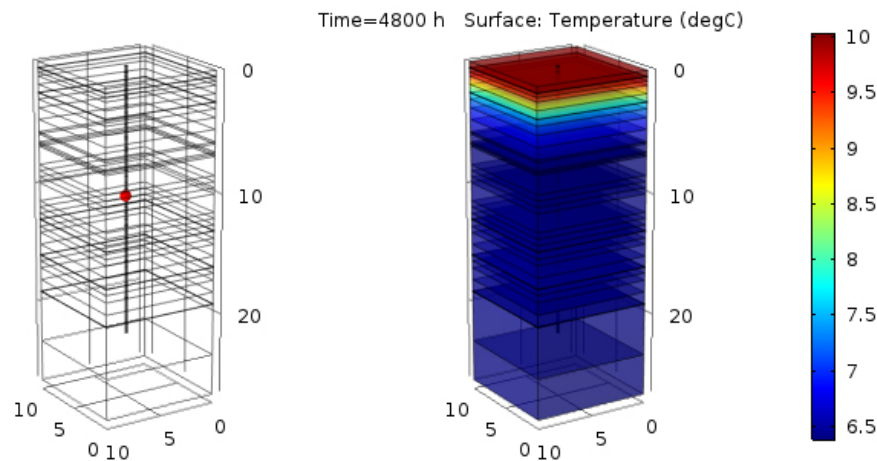


Figure 1. COMSOL simulation for the Innova office building reference pile. Left, the pile geometry (sensor T31 in red). Right, the result after $t=4800$ hrs.

Temperature sensor	Depth, m
Ground surface	0
Pile top	-0.5
T28	-0.5
T29	-2.5
T30	-4.5
T31	-6.5
T32	-8.5
T33	-10.5
T34	-12.5
T35	-14.5
T36	-16.5

Table 1. Temperature sensors location [51].

The version of COMSOL used was 5.3a, with the module Heat Transfer in Solids: the FEM method solves the time-dependent heat conduction equation in three dimensions with no heat source, namely

$$\rho C_p \frac{\partial T}{\partial t} - \nabla \cdot k \nabla T = 0, \quad (1)$$

where $\mathbf{q} = -k \nabla T$ is the heat flux through each layer of the medium. According to the large simulation scale, the mesh was defined as follows³: maximum and minimum element sizes respectively 2.67m and 0.481m, maximum element grow rate 1.5, curvature factor 0.6 and resolution of narrow regions 0.5.

The actual pile temperatures were measured with sensors placed in soil on the edge of the structure, at depths listed in Table 1. The temperatures of each soil layer at $t = 0$ were defined as initial conditions in COMSOL according to the measured data. The upper boundary condition, namely the temperature at the ground level, consisted of measured data of a sensor located on top of the pile for the period 07.03.14 - 02.10.14 (i.e. for 4800 hours). The transient study was performed with a constant time step $\Delta t = 1$ hr.

Even though the above setup is rather simple and the physical phenomenon investigated is straightforward, involving a relatively small amount of degrees of freedom, reproducing the measurements accurately was not trivial. This is due to the inherent inhomogeneity of the soil

³ A few tests performed with finer meshes showed a negligible impact of the resolution on the temperature profiles.

Layer nr	Depth, m	ρ , t/m ³	c_p , kJ/kgK	λ , W/mK
1	3.73	1.4	1.8	0.87
2	5.67	1.72	1.82	1.24
3	5.84	1.66	1.78	1.08
4	6.5	1.80	1.71	1.25
5	6.67	1.83	1.72	1.39
6	6.84	1.91	1.57	1.42
7	12.9	2.03	1.40	1.89
8	12.91	2.01	1.39	1.81
9	15.90	2.06	2.32	1.92
10	15.91	2.05	2.33	1.91
11	19	1.99	2.39	1.53
12	19.01	1.95	2.41	1.5
13	23.3	2.28	2.10	2.52
14	26.7	2.21	2.16	2.44

Table 2. Soil layer properties for the single pile simulation [51].

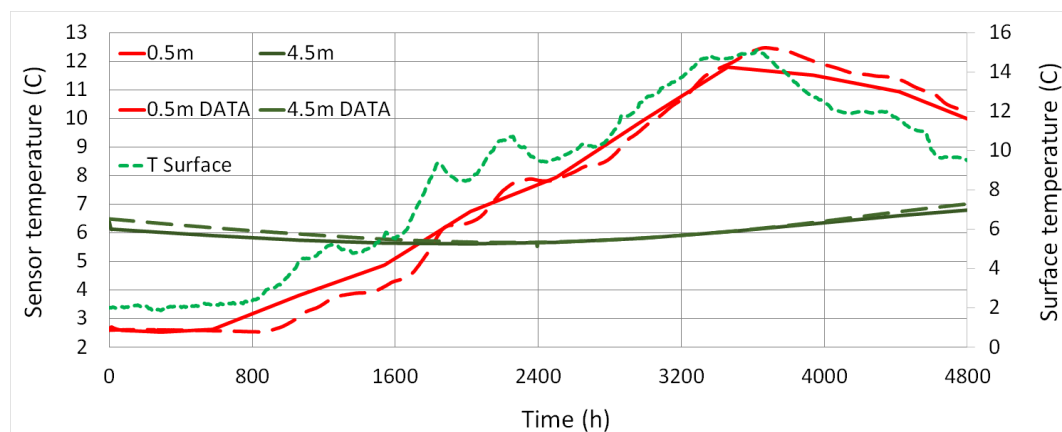


Figure 2. Measured (dashed) VS COMSOL simulated (solid) temperatures for a single pile, sensors at 0.5m and 4.5m. Surface temperature in small dashes.

layers, whose composition and thermophysical properties might well be approximated by Table 2 globally, but on a smaller scale this lack of accuracy becomes relevant.

For instance, the computed specific heat for Layer 1 was 2.5 kJ/kgK, however this value returned erroneous initial temperatures for the layer's sensors T28 and T29 (see Table 1). In the simulation we therefore fine-tuned the specific heat to 1.8 kJ/kgK, which gives correct initial T for T28 (0.5m curves in Fig.2). This c_p value is also consistent with Layer 2 right below, as one would more naturally expect. We will comment more on this in the Results, Section 2.2.

The initial temperature of each pile section was the same of the surrounding soil layer, while the measured surface T was interpolated as in Figure 2 and used as boundary condition. The main difficulty in validating the simulation consisted of matching the initial conditions also for the other sensors, not only for T28. This occurs since several layers (for which the software demands uniform initial conditions) contain sensors with different initial temperatures.

To increase accuracy, we accordingly refined the soil stratification around the pile. As illustrated in Figure 1, the original 14 layers were split when necessary into a total of 36 layers, to allow for a finer initial temperature profile. This means that 36 different initial temperatures were set in the model, still keeping the thermophysical properties in Table 2 unaltered. Avoiding sharp differences at the interface of contiguous layers, we were indeed aiming to a more physical initial temperature profile in the soil.

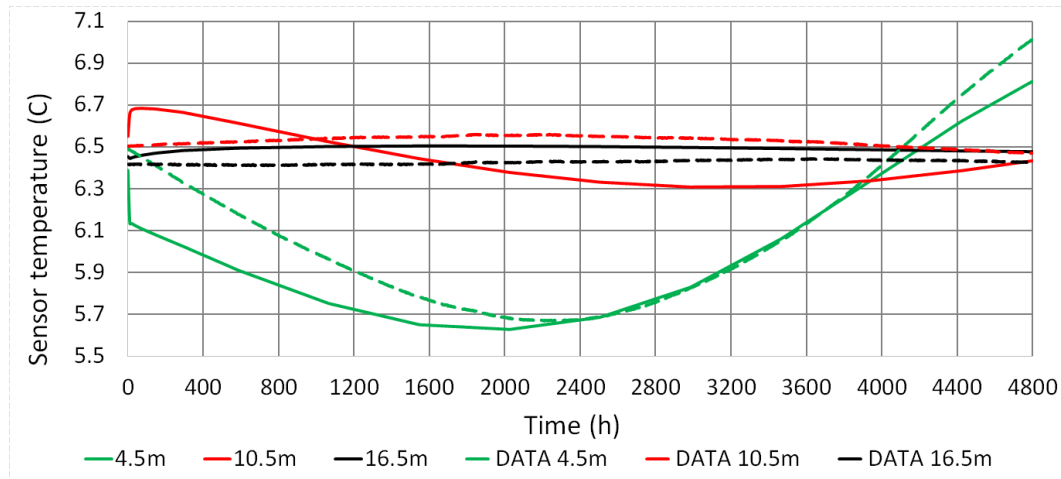


Figure 3. Data (dashed) vs COMSOL T (solid) for sensors at 4.5m, 10.5m and 16.5m depth.

2.2. Results

The plot presented in Figure 2 compares the temperature profile for the sensors at 0.5m, 2.5m and 4.5m as computed by COMSOL with the data measurements. We find a very good agreement for all sensors. In Figure 3 the temperature profiles at 4.5m (with error well below 5% for almost all time steps), at 10.5m and at 16.5m show a remarkable agreement, considering that the specific heat was unknown and had to be computed. The difference data-simulation is very minimal, never larger than $0.2^{\circ}\text{C} \sim 3\%$, and is clearly a reflection of the uncertainty in the thermal mass.

These results thus seem to be convincing; more accurate soil properties around the sensors would provide with an even more precise validation. In any case, we can conclude that our COMSOL setup is reliable enough for our purpose, and constitutes a solid foundation for the set of simulations described in the next sections.

3. Ground surface boundary analysis in COMSOL

After validating the simulation setup, we are now going to use an analogous COMSOL model to study a 2D heat transfer analysis in energy piles with two different boundary conditions at the surface: case a) single uniform indoor floor, and case b) outdoor soil/indoor floor slab. The goal of this second case study was assessing the importance of the multiregional boundary condition proposed in [12].

3.1. Method

The calculation at hand consists of a 2D dimensional reduction of the 3D model addressed in Section 2, extended to a multiple piles layout. The 2D COMSOL model in Figures 4 and 5 studies the heat transfer processes occurring between five 15m-long energy piles, placed under the building, and the surrounding homogeneous soil.

We modelled a 20m-large floor slab, consisting of two layers: a lower 20cm-thick EPS layer with $k=0.034 \text{ W/mK}$, $\rho=20 \text{ kg/m}^3$ and $c_p=750 \text{ kJ/kgK}$, and an upper 10cm-thick concrete slab with $k=1.8 \text{ W/mK}$, $\rho=2400 \text{ kg/m}^3$ and $c_p=880 \text{ kJ/kgK}$. Each pile was implemented as a 15m-long concrete grout with diameter 115mm, surrounding a U-pipe of external diameter 25mm (their modelling is discussed more into detail in the next Section 3.1.1). The piles spacing was 4.5m and they were buried into a soil medium with $k=1.1 \text{ W/mK}$, $\rho=1800 \text{ kg/m}^3$ and $c_p=1800 \text{ kJ/kgK}$.

The two cases investigated correspond to two different upper boundary conditions: a) floor only, set at 20°C , namely the average annual indoor air temperature of a commercial hall-type building; b) floor+soil, where the soil extends for 5m further from each floor edge (see Figure 6). The soil surface was set at $T=5.67^{\circ}\text{C}$, which corresponds to the average annual outdoor air temperature in Southern Finland.

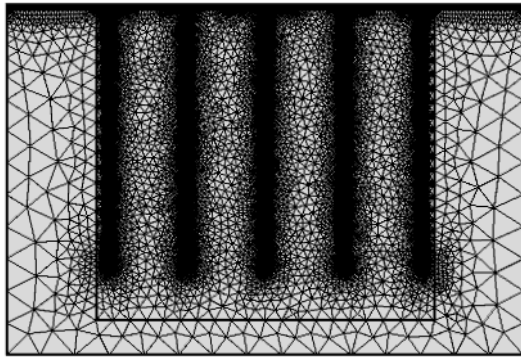


Figure 4. COMSOL mesh for case a), only floor.

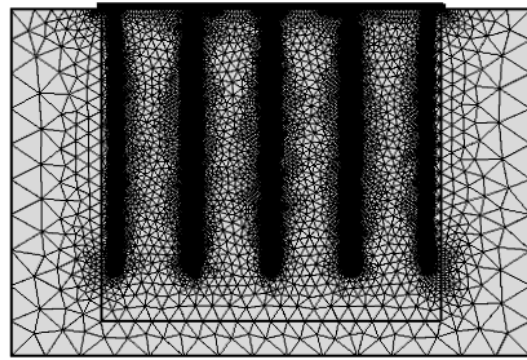


Figure 5. COMSOL mesh for case b), floor and soil.

The initial T values were the following: soil layer and grout 5.67°C , U-pipes 0°C , upper concrete floor layer 20°C . The U-pipes were always kept at constant $T=0^{\circ}\text{C}$ (corresponds to constant heat pump operation), the floor at 20°C for both a) and b) and the soil surface for case b) at 5.67°C . A 2D heat conduction module was used, defined by an equation analogous to (1) that naturally takes into account the mutual thermal interaction of adjacent piles. The mesh was normally sized, tetrahedral and physics-controlled, finer at the soil/pile interface and coarser near the boundaries (Figures 4 and 5), with minimum element size 9mm and maximum 2m. The simulation was carried out for 2400 hrs, with time interval $\Delta t=1$ hr.

3.1.1. Brine flow modelling

In standard constructions, the U-pipes inside the energy piles are usually made of high-density polyethylene (HDPE), with a brine fluid (mostly a water/ethanol mixture) flowing inside [51].

Since the simulations here performed are characterized by large geometry and time scales ($\Delta t=1$ hr and $t_{tot}=2400$ hrs), it is legitimate to be concerned with the computational problems related to the inclusion of a fluid dynamics module. For the same reasons though, simulating the fluid flow in the pipes should not be necessary, since high-resolution microphysical processes (inducing fluctuations, turbulences and local irregularities in the brine flow and temperature) should not be relevant.

This reasoning seems to find support in the literature: several examples (see e.g. [54,55]) can be found illustrating how models of transient fluid transport inside the tubes would be justified only for much smaller time scales⁴. There are different ways to simplify the implementation of fluid flow, in order to reduce the computational time; for example, in [24,42] the convective heat transfer associated with the fluid flow was simulated by an equivalent solid with the same thermophysical properties of the actual circulation fluid.

In order to quantify the error induced by neglecting the fluid flow, we therefore considered the system in Fig.4 only with heat conduction, and modelled the U pipes as made of concrete at constant temperature 0°C . The surrounding grout was at 5.67°C at $t = 0$, and then subject to heat transfer for 2400 hours. On the other hand, we created another simulation based on the exact same setup, but this time with U-pipes made of water that was flowing at 0°C , with inlet velocity $V_{in} = 0.45$ m/s and ignoring the pipe thickness.

The result is plotted in Figure 7, where we compare the average temperature in the soil area surrounding the piles, which is active for heat extraction and is highlighted in Fig.6. One can see that the difference is negligible, confirming our assumption at the beginning of this section that we can safely ignore the fluid flow. We accordingly model the U-pipes as made of concrete with constant T ,

⁴ In particular, Ref.[54] shows that a steady-state, a transient and a semi transient model converge already after ~ 3 hrs.

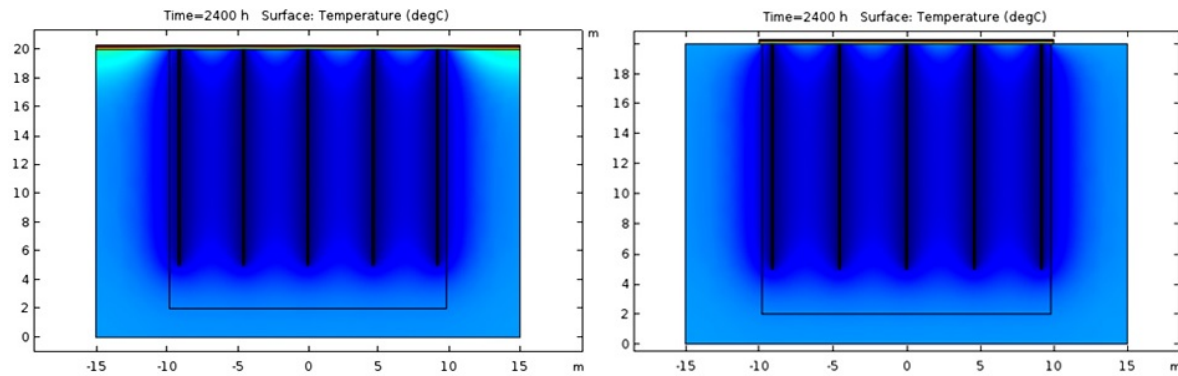


Figure 6. 2D COMSOL result after 2400 hrs for (left) a) only floor and (right) b) floor+soil as upper boundary.

both in the 2D computations and in the full 3D simulations performed in Sections 4 and 5. Let us remark however that the above discussion pertains only COMSOL; IDA-ICE, on the other hand, considers the fluid turbulence already by default when computing the convection heat transfer coefficient h .

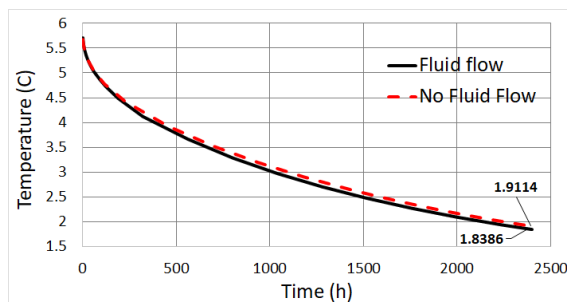


Figure 7. Average temperature in the highlighted area of Fig.6 with fluid flow modelling (solid) compared with no fluid modelling (dashed).

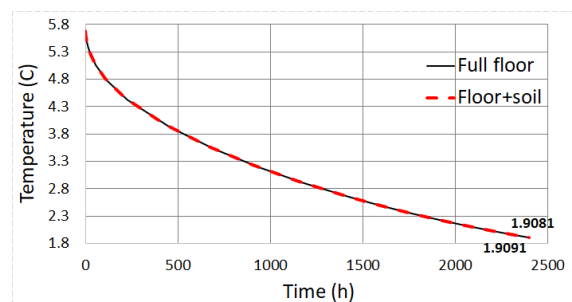


Figure 8. Average temperature in the highlighted slab portion, a) floor (dashed) VS b) floor+soil (solid). T [°C] values for the last point in bold.

3.2. Results

In this section we compare and discuss the thermal profiles calculated by COMSOL in the two cases corresponding to two different boundary conditions at surface. To quantify differences in the soil region that is active for heat extraction, we computed the average temperature for the rectangular region highlighted in Figure 6 for both a) and b). This extends for 1.5m from the most external piles on both sides, and for 1m from the piles bottom. Thermal insulation effects at the boundaries (at 0m, -5m and 15m in the plot), which are embedded in COMSOL, should not alter the result as they are washed out by the large amount of soil between boundaries and the region's edges.

The result is plotted in Figure 8. It is rather evident that, even after so many hours of heat pump operation at full load, no appreciable difference can be discerned, only $\sim 0.015^\circ\text{C}$ at the most.

We thus conclude that when interested in average temperatures and energy balance, we can freely choose either boundary conditions without compromising our results.

4. IDA-ICE borehole model validation against COMSOL

In this third study we consider a 3D IDA-ICE finite difference borehole model, together with the COMSOL FEM counterpart. The latter is a direct 3D extension of the 2D model discussed in Section 3. Here we compute the outlet temperatures at different depths on the edge of 20 energy piles, which

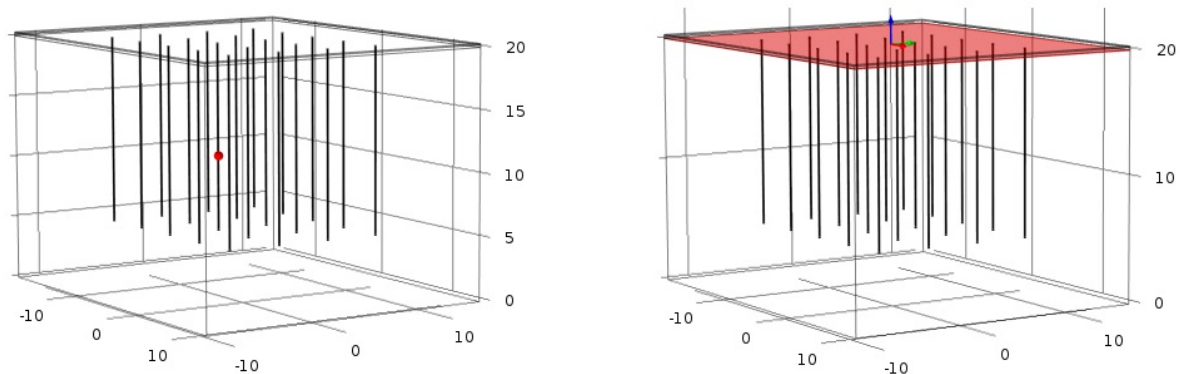


Figure 9. Floor slab with 20 energy piles in COMSOL. Data point at 9m shown as a red dot.

are buried in soil under a multilayer floor. Results from the IDA-ICE model are compared with those obtained from COMSOL, in order to estimate the accuracy of the IDA-ICE calculation.

4.1. Method

A 3D FEM COMSOL extension of the 2D model discussed in Section 3 is here performed, with 20 identical energy piles that are 15m-long and with 4.5m spacing; the same geometry is implemented both in COMSOL (Figure 9) and in IDA-ICE, with a 3D finite element (COMSOL) or finite difference (IDA-ICE) borehole model that accounts for the mutual thermal interaction of adjacent piles.

The piles were buried in a 25mx25mx20m soil medium (layout listed in Table 3), with the same multilayer floor (concrete slab over an EPS layer) addressed in Section 3 as the upper boundary condition⁵. Temperature loggers were set on the centre pile #10, on the centre-edge pile #12 and on the edge pile #20, to quantify the impact of surrounding piles on the temperature fields. Temperatures were logged at 1.5m, 3m, 6m and 12m depth, with loggers located on the pile edge in contact with soil.

In the COMSOL simulation piles, floor and soil were modelled exactly as in Section 3.1, with the same material properties. The concrete floor was kept at 20°C at all times, and the U-pipes were kept at steady $T=0^{\circ}\text{C}$ (corresponding to a constant heat pump operation). In order to decrease the simulation time, no fluid flow was modelled, as explained in Section 3.1; in IDA-ICE instead, the fluid at constant $T=0^{\circ}\text{C}$ entered the energy piles at a very high flow rate. Simulations in COMSOL and IDA-ICE ran for 2400 hrs, with time interval $\Delta t=1$ hr.

17	18	19	20
13	14	15	16
9	10	11	12
5	6	7	8
1	2	3	4

Table 3. Layout of the energy piles for the IDA-ICE and COMSOL simulations.

4.2. Results

Looking at Figures 10, 11 and 12, one can clearly see that, as expected, only the central pile #10 is slightly colder than the other two. We do not really see a major impact of the specific placement. Furthermore, predictions of COMSOL and IDA-ICE are extremely close, on the average of the order 0.05°C. Regardless of the software used, the temperature difference is overall very small, accounting

⁵ In IDA-ICE this is set by default because, as remarked earlier, the option to define multiple ground surface boundary regions is not available.

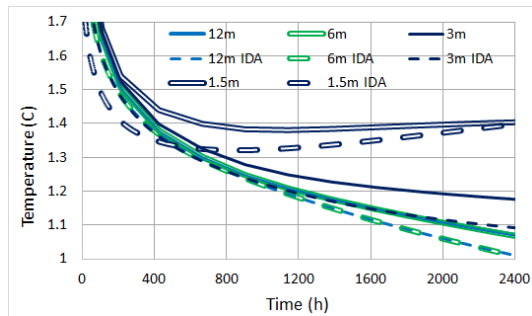


Figure 10. Pile #10.

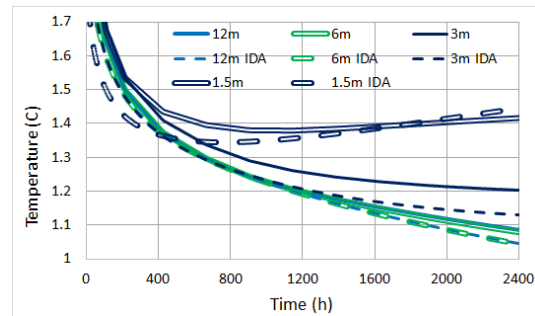


Figure 11. Pile #12.

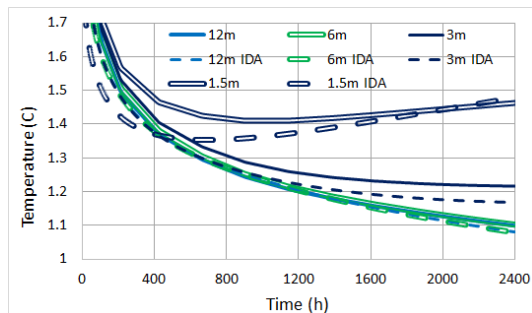


Figure 12. Pile #20.

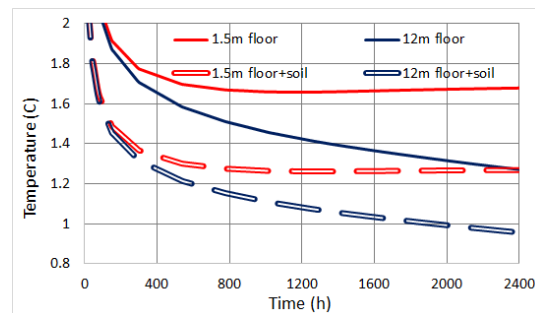


Figure 13. COMSOL comparison of different boundary conditions.

for the soil medium and piles temperature homogeneity. Even a very large depth difference shows little discrepancy, e.g. 1.5m and 12m give $\Delta T < 0.4^\circ\text{C}$. Specifically, notice how for every pile, the 12m curves overlap exactly with those at 6m. Surface effects are indeed strongly hindered by the large thermal mass of the soil medium. Fig.13 also illustrates that, for different boundary conditions at the surface (full floor vs floor+soil), COMSOL shows a similar $\Delta T \sim 0.4^\circ\text{C}$. This effect is compensated by averaging over the large area that is active for heat extraction, as we discussed in Section 3.

Surface effects should however be relevant for small depths. We thus consider a point in between the central piles, at 0.5m under the floor, and compare its temperature profile to that of another point right above, very close to the floor, at 3cm depth. As illustrated in Figure 14, after about 200 hrs (i.e. after the FEM simulation is stabilised) there is a constant $\Delta T \sim 0.8^\circ\text{C}$. This means that, differently from what we have seen above for points sitting deeper underground, when approaching the surface T differences are relevant and cannot be ignored.

More importantly though, Figure 14 also shows that the integrated average temperature on a plane located at 3cm under the floor, pictured in Fig.9, always coincides with T as computed at a central point at the same depth. This is a natural consequence of the simulation's geometrical and physical symmetry, showing that for a similar setup one can use averages instead of point values. This result might be valuable for practitioners and on-site applications.

5. Impact of boundary conditions on energy efficiency calculations

In this final case, we apply to a 3D COMSOL FEM model the data obtained in [27] by modelling the energy piles with IDA-ICE, in order to calculate the temperature underneath the floor slab (also called "ground surface temperature"). The result is then compared to the rough estimation made in [27] (the "outlet" solution here), and to an analogous IDA-ICE calculation using a new software version updated in November 2017 (the "slab" solution here). We find that the new implementation "slab" shows a remarkable improvement over the "outlet" method in terms of energy consumption assessment.

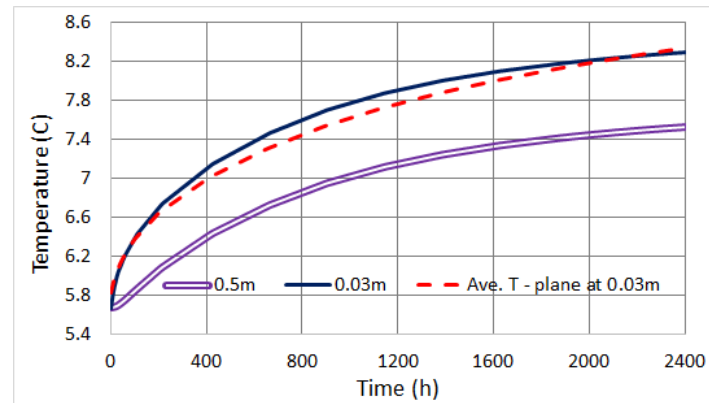


Figure 14. Temperature at mid points and on a plane parallel to the floor.

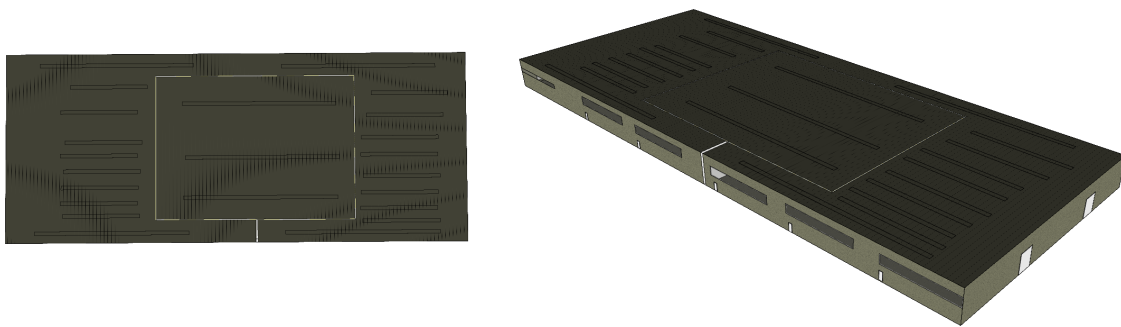


Figure 15. Building model with a separated zone (centre) above energy piles modelled in IDA-ICE.

5.1. Method

Geothermal energy piles with heat pump in a whole building were modelled in IDA-ICE following the design proposed in [27] and addressing the same commercial hall-type building (Figure 15). The total number of energy piles was 192, the initial soil temperature 5.67°C and the piles were 15m-long. The soil properties were $k=1.1$ W/mK, $\rho=1800$ kg/m³ and $c_p=1800$ kJ/kgK.

In the present study, we performed an annual IDA-ICE simulation according to this design. We obtained inlet and outlet energy piles temperatures with hourly resolution, which we used to calculate the average energy piles fluid temperature. These were then implemented in COMSOL as boundary conditions, to avoid including a fluid dynamics module for the reasons explained in Section 3.1. Our COMSOL simulation accordingly involves only heat conduction, but uses the IDA-ICE values to increase the precision.

To compute the yearly energy demand for this building, the model was divided into two zones - one with energy piles and one without. The building floor slab above the energy piles accounts for ca. 33% of the total floor slab area. In the original "outlet" approach presented in [27], a variable temperature underneath this surface is roughly estimated as the energy piles outlet temperature, with connection scheme presented in Figure 16. This was necessary since before November 2017 it was not possible for IDA-ICE to calculate the exact ground surface temperature above the piles, which we accomplish instead with the new solution called "slab".

The annual simulation with hourly resolution performed in COMSOL returned the average ground surface temperature T_s beneath the floor slab, then compared against the same T_s calculated by the new "slab" borehole model. Finally, we quantify the discrepancy between COMSOL and the two IDA-ICE models "outlet" and "slab" when computing the yearly energy need for the above building.

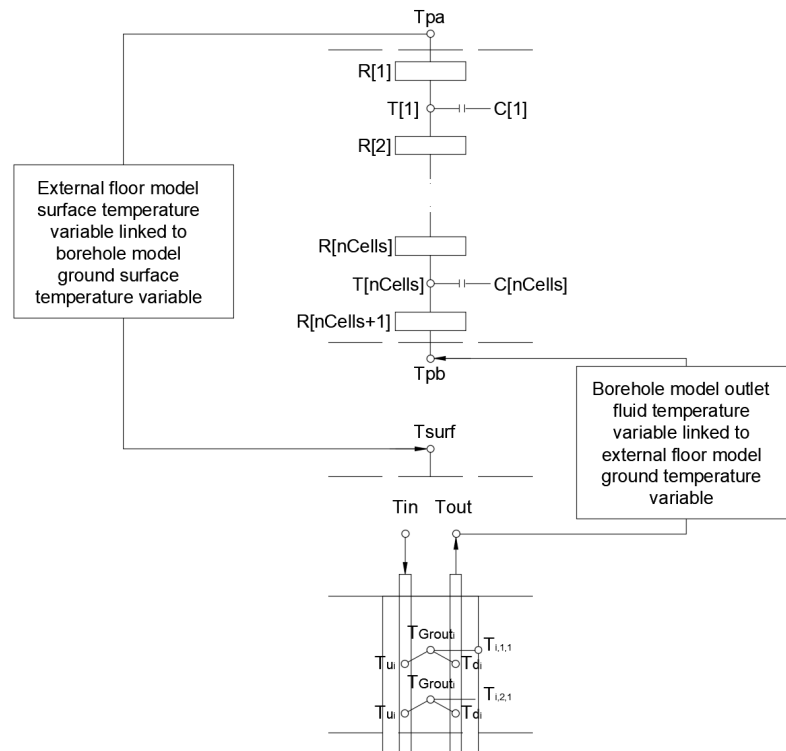


Figure 16. Connection scheme for "slab" (left) and "outlet" (right) IDA-ICE borehole models.

5.2. Results

Figure 17 compares the COMSOL-calculated ground surface temperature against the two temperatures estimated in IDA-ICE. In the previous IDA-ICE "outlet" approach [27], the results were obtained with an outdated version of the software, where the borehole model uses the energy piles outlet temperature as a rough estimate for the ground surface temperature.

The newer IDA-ICE "slab" estimates use instead the latest version of borehole model, which is now capable of estimating the ground surface temperature. One can observe a significant difference of 5.8°C between the new and old version over the simulated annual period. Remarkably, the new result of IDA-ICE borehole model differs by only 0.6°C from COMSOL.

Table 4 shows how improper modelling of the ground surface temperature affects the floor slab heat flux over the energy piles, and accordingly the overall annual heat demand of the building. From the perspective of annual heat flux difference, simply applying the outlet temperature of energy piles as ground surface boundary condition in "outlet" produces a difference in ca. 54%, which induces nearly a 5% overestimation of building annual heating need. In contrast, the new version of borehole model "slab" performs in a very good agreement with COMSOL, within an acceptable heat flux and heating need difference of 0.03% and 0.2% respectively.

Case	Floor slab heat flux, kWh/a	Heating need, kWh/a	Heat flux, % difference	Heating need, % difference
COMSOL	24066	142900	-	-
IDA-ICE slab	24073	142580	0.03%	0.2%
IDA-ICE outlet	37127	150196	54%	5%

Table 4. Validation results for the IDA-ICE estimated ground surface temperature.

The new IDA-ICE implementation of a borehole model is therefore free from previous heating consumption overestimations, providing a reliable tool for investigations of building heating needs.

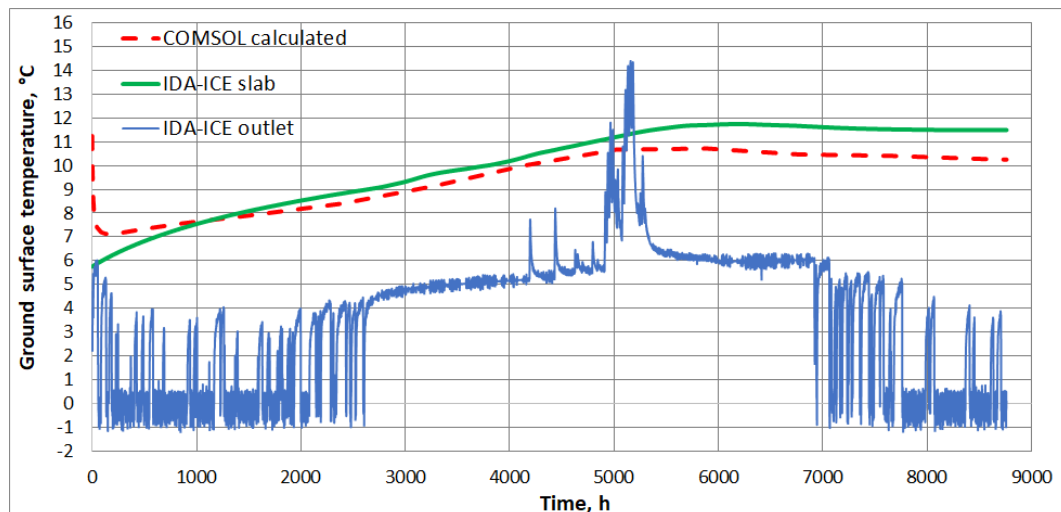


Figure 17. Estimated IDA-ICE ground surface temperature VS calculated in COMSOL.

6. Conclusions

In this paper we have investigated into detail geothermal plants modelling, by comparing different boundary conditions and their impact on numerical studies of heat transfer and energy performance. First we considered the finite element method (FEM) software COMSOL Multiphysics, and validated a 3D model of transient heat transfer against experimental data. We found an excellent agreement, despite uncertainties in the measurements and estimated soil properties.

Next we simulated transient heat transfer in a multi-pile 2D reduction of the previous simulation, and addressed the effect of different upper boundary conditions, namely either i) a unique floor multilayer at 20°C or ii) a floor at 20°C and soil at ~6°C. We found that for practical purposes, the average temperatures and energy balance for a yearly calculation are unaffected by the specific boundary condition. This holds by virtue of extremely small temperature differences in the active heat extraction region: modelling of energy piles can thus be performed using borehole models with variable ground surface temperature, which can be set as the indoor air temperature above the energy piles area. The implementation of multiregional surface boundary conditions proposed in [12] can be accordingly neglected in future studies.

As a side result, we discussed the role of fluid flow modelling inside the pipes. We confirm earlier findings that for the length and time scales of interest, one can safely ignore the fluid flow and model the U-pipes as made of concrete with constant T , both in 2D and 3D simulations.

A third computation was then performed with both COMSOL and IDA-ICE, addressing transient heat transfer for 2400 hours. The simulations consisted of a 3D model with 20 energy piles embedded in a soil medium, under a uniform multilayer floor, revealing that temperature predictions of COMSOL and IDA-ICE are extremely close, on the average of the order 0.05°C. In particular, the piles temperatures are not affected by the specific placement, as they are approximately constant for a given depth. The large thermal mass of piles and medium also provides a very small vertical gradient, e.g. the difference between 1.5m and 12m depth gives only $\Delta T < 0.4^\circ\text{C}$. Moreover, for every pile the 12m curves overlap exactly with those at 6m.

Fig.13 illustrates a comparable $\Delta T \sim 0.4^\circ\text{C}$ also for different boundary conditions at the surface (full floor vs floor+soil) in COMSOL. This effect is compensated by averaging over the large area that is active for heat extraction, as we discussed in Section 3. However, close to the surface the different boundary conditions (full floor vs floor+soil) do give a different temperature. Interestingly, we also found that the integrated average T on a horizontal plane at height h is nearly identical to the one at a point laying on it. This result could be useful for practical calculations of energy balance over the same time scale.

Finally, we performed a yearly simulation to assess the heating need of a commercial building employing a geothermal plant. Assuming the COMSOL FEM calculation validated in Section 1 as our benchmark, two IDA-ICE FDM simulations illustrated the impact of different upper boundary conditions on the final energy consumption estimate. We found that in IDA-ICE, adopting the energy piles outlet temperature as a rough estimate for the ground surface temperature overestimates the heat flux in the floor slab by 54% and the heating need by 5%. On the other hand, using the ground surface temperature produced a consistent result with COMSOL, overestimating the heat flux and heating need by only 0.03% and 0.2% respectively.

In conclusion, this paper provides a through comparison of software widely used in simulations of heating systems adopting borehole and energy piles. In particular, focusing on the role of upper boundary conditions, we showed that multiregional b.c. are fairly equivalent to a single surface with uniform temperature. Moreover, we proved that using the pipes outlet temperature induces a severe overestimation of the heat flux through the heated floor and of the energy demand for the whole building. These results are relevant especially for practical purposes, in the development of geothermal energy methods in compliance with international Standards and towards sustainability.

Funding: The research was supported by the Estonian Research Council with Institutional research funding grant IUT1-15. The authors are also grateful to the Estonian Centre of Excellence in Zero Energy and Resource Efficient Smart Buildings and Districts, ZEBE, grant 2014-2020.4.01.15-0016 funded by the European Regional Development Fund.

Conflicts of Interest: The authors declare no conflict of interest.

Abbreviations

The following abbreviations have been used in this manuscript:

Ground heat exchangers (GHE)
Finite Element Method (FEM)
Finite Difference Method (FDM)
Boundary conditions (b.c.)

References

1. European Parliament. Directive 2010/31/EU of the European Parliament and of the Council of 19 May 2010 on the energy performance of buildings. *Official Journal of the European Union* 53 (2010) 13–35 **2010**.
2. Lund, J.W.; Boyd, T.L. Direct utilization of geothermal energy 2015 worldwide review. *Geothermics* **2016**, *60*, 66–93. doi:https://doi.org/10.1016/j.geothermics.2015.11.004.
3. Agemar, T.; Weber, J.; Moeck, I.S. Assessment and Public Reporting of Geothermal Resources in Germany: Review and Outlook. *Energies* **2018**, *11*. doi:10.3390/en11020332.
4. Park, K.S.; Kim, S. Utilising Unused Energy Resources for Sustainable Heating and Cooling System in Buildings: A Case Study of Geothermal Energy and Water Sources in a University. *Energies* **2018**, *11*. doi:10.3390/en11071836.
5. Aydin, M.; Sisman, A. Experimental and computational investigation of multi U-tube boreholes. *Applied Energy* **2015**, *145*, 163–171. doi:https://doi.org/10.1016/j.apenergy.2015.02.036.
6. Bose, J.E.; Smith, M.; Spitler, J. Advances in ground source heat pump systems—an international overview. 7th IEA Heat Pump Conference. 1: 313, 2002, Vol. 324, pp. 313–324.
7. Spitler, J. Editorial: Ground-Source Heat Pump System Research—Past, Present, and Future. *HVAC&R Research* **2005**, *11*, 165–167. doi:10.1080/10789669.2005.10391132.
8. Brandl, H. Energy foundations and other thermo-active ground structures. *Geotechnique* **2006**, *56*, 81–122, [https://doi.org/10.1680/geot.2006.56.2.81]. doi:10.1680/geot.2006.56.2.81.
9. Faizal, M.; Bouazza, A.; Singh, R.M. Heat transfer enhancement of geothermal energy piles. *Renewable and Sustainable Energy Reviews* **2016**, *57*, 16–33. doi:https://doi.org/10.1016/j.rser.2015.12.065.
10. Bourne-Webb, P.; Burlon, S.; Javed, S.; Kuerten, S.; Loveridge, F. Analysis and design methods for energy geostructures. *Renewable and Sustainable Energy Reviews* **2016**, *65*, 402–419. doi:https://doi.org/10.1016/j.rser.2016.06.046.

11. Li, M.; Lai, A.C. Review of analytical models for heat transfer by vertical ground heat exchangers (GHEs): A perspective of time and space scales. *Applied Energy* **2015**, *151*, 178 – 191. doi:https://doi.org/10.1016/j.apenergy.2015.04.070.
12. Fadejev, J.; Simson, R.; Kurnitski, J.; Haghighat, F. A review on energy piles design, sizing and modelling. *Energy* **2017**, *122*, 390 – 407. doi:https://doi.org/10.1016/j.energy.2017.01.097.
13. Ingersoll, L.R.; Zobel, O.J.; Ingersoll, A.C. Heat conduction with engineering, geological and other applications. *Quarterly Journal of the Royal Meteorological Society* **1955**, *81*, 647–648. doi:10.1002/qj.49708135036.
14. Goldenberg, H. A problem in radial heat flow. *British Journal of Applied Physics* **1951**, *2*, 233.
15. Hu, P.; Zha, J.; Lei, F.; Zhu, N.; Wu, T. A composite cylindrical model and its application in analysis of thermal response and performance for energy pile. *Energy and Buildings* **2014**, *84*, 324 – 332. doi:https://doi.org/10.1016/j.enbuild.2014.07.046.
16. Abdelaziz, S.L.; Ozudogru, T.Y. Selection of the design temperature change for energy piles. *Applied Thermal Engineering* **2016**, *107*, 1036 – 1045. doi:https://doi.org/10.1016/j.applthermaleng.2016.07.067.
17. Hellström, G. Ground heat storage : thermal analyses of duct storage systems. PhD thesis, School of Mathematical Physics, Lund University, Sweden, 1991.
18. Claesson, J.; Hellström, G. Analytical studies of the influence of regional groundwater flow on the performance of borehole heat exchangers. *Proceedings of the 8th International Conference on Thermal Energy Storage, Terrastock 2000, Stuttgart, Germany 2000*, pp. 195–200.
19. Bozis, D.; Papakostas, K.; Kyriakis, N. On the evaluation of design parameters effects on the heat transfer efficiency of energy piles. *Energy and Buildings* **2011**, *43*, 1020 – 1029. doi:https://doi.org/10.1016/j.enbuild.2010.12.028.
20. Rosa, M.D.; Ruiz-Calvo, F.; Corberán, J.M.; Montagud, C.; Tagliafico, L.A. Borehole modelling: a comparison between a steady-state model and a novel dynamic model in a real ON/OFF GSHP operation. *Journal of Physics: Conference Series* **2014**, *547*, 012008.
21. Kwong Lee, C.; Nam Lam, H. Thermal Response Test Analysis for an Energy Pile in Ground-Source Heat Pump Systems. *Progress in Sustainable Energy Technologies: Generating Renewable Energy* **2014**, pp. 605–615.
22. Li, Z.; Zheng, M. Development of a numerical model for the simulation of vertical U-tube ground heat exchangers. *Applied Thermal Engineering* **2009**, *29*, 920 – 924. doi:https://doi.org/10.1016/j.applthermaleng.2008.04.024.
23. Nam, Y.; Ooka, R.; Hwang, S. Development of a numerical model to predict heat exchange rates for a ground-source heat pump system. *Energy and Buildings* **2008**, *40*, 2133 – 2140. doi:https://doi.org/10.1016/j.enbuild.2008.06.004.
24. Lazzari, S.; Priarone, A.; Zanchini, E. Long-term performance of BHE (borehole heat exchanger) fields with negligible groundwater movement. *Energy* **2010**, *35*, 4966 – 4974. The 3rd International Conference on Sustainable Energy and Environmental Protection, SEEP 2009, doi:https://doi.org/10.1016/j.energy.2010.08.028.
25. Diersch, H.J.; Bauer, D.; Heidemann, W.; Rühaak, W.; Schätzl, P. Finite element modeling of borehole heat exchanger systems: Part 2. Numerical simulation. *Computers & Geosciences* **2011**, *37*, 1136 – 1147. doi:https://doi.org/10.1016/j.cageo.2010.08.002.
26. Salvalai, G. Implementation and validation of simplified heat pump model in IDA-ICE energy simulation environment. *Energy and Buildings* **2012**, *49*, 132 – 141. doi:https://doi.org/10.1016/j.enbuild.2012.01.038.
27. Fadejev, J.; Kurnitski, J. Geothermal energy piles and boreholes design with heat pump in a whole building simulation software. *Energy and Buildings* **2015**, *106*, 23 – 34. SI: IEA-ECES Annex 31 Special Issue on Thermal Energy Storage, doi:https://doi.org/10.1016/j.enbuild.2015.06.014.
28. Østergaard, D.; Svendsen, S. Space heating with ultra-low-temperature district heating – a case study of four single-family houses from the 1980s. *Energy Procedia* **2017**, *116*, 226 – 235. 15th International Symposium on District Heating and Cooling, DHC15-2016, 4-7 September 2016, Seoul, South Korea, doi:https://doi.org/10.1016/j.egypro.2017.05.070.
29. Schweiger, G.; Heimrath, R.; Falay, B.; O'Donovan, K.; Nageler, P.; Pertschy, R.; Engel, G.; Streicher, W.; Leusbrock, I. District energy systems: Modelling paradigms and general-purpose tools. *Energy* **2018**, *164*, 1326 – 1340. doi:https://doi.org/10.1016/j.energy.2018.08.193.

30. Lee, C.; Lam, H. A simplified model of energy pile for ground-source heat pump systems. *Energy* **2013**, *55*, 838 – 845. doi:https://doi.org/10.1016/j.energy.2013.03.077.
31. Mehrizi, A.A.; Porkhial, S.; Bezyan, B.; Lotfizadeh, H. Energy pile foundation simulation for different configurations of ground source heat exchanger. *International Communications in Heat and Mass Transfer* **2016**, *70*, 105 – 114. doi:https://doi.org/10.1016/j.icheatmasstransfer.2015.12.001.
32. Xiao, J.; Luo, Z.; Martin, J.R.; Gong, W.; Wang, L. Probabilistic geotechnical analysis of energy piles in granular soils. *Engineering Geology* **2016**, *209*, 119 – 127. doi:https://doi.org/10.1016/j.enggeo.2016.05.006.
33. Pryor, R.W. *Multiphysics Modeling Using COMSOL: A First Principles Approach*, 1st ed.; Jones and Bartlett Publishers, Inc.: USA, 2009.
34. Dupray, F.; Laloui, L.; Kazangba, A. Numerical analysis of seasonal heat storage in an energy pile foundation. *Computers and Geotechnics* **2014**, *55*, 67 – 77. doi:https://doi.org/10.1016/j.compgeo.2013.08.004.
35. Diersch, H.J.; Bauer, D.; Heidemann, W.; Rühaak, W.; Schätzl, P. Finite element modeling of borehole heat exchanger systems: Part 1. Fundamentals. *Computers & Geosciences* **2011**, *37*, 1122 – 1135. doi:https://doi.org/10.1016/j.cageo.2010.08.003.
36. Park, H.; Lee, S.R.; Yoon, S.; Choi, J.C. Evaluation of thermal response and performance of PHC energy pile: Field experiments and numerical simulation. *Applied Energy* **2013**, *103*, 12 – 24. doi:https://doi.org/10.1016/j.apenergy.2012.10.012.
37. Cecinato, F.; Loveridge, F.A. Influences on the thermal efficiency of energy piles. *Energy* **2015**, *82*, 1021 – 1033. doi:https://doi.org/10.1016/j.energy.2015.02.001.
38. Ng, C.; Ma, Q.; Gunawan, A. Horizontal stress change of energy piles subjected to thermal cycles in sand. *Computers and Geotechnics* **2016**, *78*, 54 – 61. doi:https://doi.org/10.1016/j.compgeo.2016.05.003.
39. Go, G.H.; Lee, S.R.; Yoon, S.; byul Kang, H. Design of spiral coil PHC energy pile considering effective borehole thermal resistance and groundwater advection effects. *Applied Energy* **2014**, *125*, 165 – 178. doi:https://doi.org/10.1016/j.apenergy.2014.03.059.
40. Loveridge, F.; Powrie, W. 2D thermal resistance of pile heat exchangers. *Geothermics* **2014**, *50*, 122 – 135. doi:https://doi.org/10.1016/j.geothermics.2013.09.015.
41. Alberdi-Pagola, M.; Poulsen, S.E.; Jensen, R.L.; Madsen, S. Thermal design method for multiple precast energy piles. *Geothermics* **2019**, *78*, 201 – 210. doi:https://doi.org/10.1016/j.geothermics.2018.12.007.
42. Batini, N.; Loria, A.F.R.; Conti, P.; Testi, D.; Grassi, W.; Laloui, L. Energy and geotechnical behaviour of energy piles for different design solutions. *Applied Thermal Engineering* **2015**, *86*, 199 – 213. doi:https://doi.org/10.1016/j.applthermaleng.2015.04.050.
43. Caulk, R.; Ghazanfari, E.; McCartney, J.S. Parameterization of a calibrated geothermal energy pile model. *Geomechanics for Energy and the Environment* **2016**, *5*, 1 – 15. doi:https://doi.org/10.1016/j.gete.2015.11.001.
44. Loria, A.F.R.; Vadrot, A.; Laloui, L. Analysis of the vertical displacement of energy pile groups. *Geomechanics for Energy and the Environment* **2018**, *16*, 1 – 14. doi:https://doi.org/10.1016/j.gete.2018.04.001.
45. Li, M.; Lai, A.C. Heat-source solutions to heat conduction in anisotropic media with application to pile and borehole ground heat exchangers. *Applied Energy* **2012**, *96*, 451 – 458. doi:https://doi.org/10.1016/j.apenergy.2012.02.084.
46. Park, S.; Lee, D.; Lee, S.; Chauchois, A.; Choi, H. Experimental and numerical analysis on thermal performance of large-diameter cast-in-place energy pile constructed in soft ground. *Energy* **2017**, *118*, 297 – 311. doi:https://doi.org/10.1016/j.energy.2016.12.045.
47. McCartney, J.S.; Murphy, K.D. Investigation of potential dragdown/uplift effects on energy piles. *Geomechanics for Energy and the Environment* **2017**, *10*, 21 – 28. doi:https://doi.org/10.1016/j.gete.2017.03.001.
48. Sung, C.; Park, S.; Lee, S.; Oh, K.; Choi, H. Thermo-mechanical behavior of cast-in-place energy piles. *Energy* **2018**, *161*, 920 – 938. doi:https://doi.org/10.1016/j.energy.2018.07.079.
49. Singh, R.; Bouazza, A.; Wang, B. Near-field ground thermal response to heating of a geothermal energy pile: Observations from a field test. *Soils and Foundations* **2015**, *55*, 1412 – 1426. doi:https://doi.org/10.1016/j.sandf.2015.10.007.
50. Suryatriyastuti, M.; Mrroueh, H.; Burlon, S. Understanding the temperature-induced mechanical behaviour of energy pile foundations. *Renewable and Sustainable Energy Reviews* **2012**, *16*, 3344 – 3354. doi:https://doi.org/10.1016/j.rser.2012.02.062.

51. Uotinen, V.M.; Repo, T.; Vesamäki, H. Energy piles - ground energy system integrated to the steel foundation piles. *NGM 2012 Proceedings of the 16th Nordic Geotechnical Meeting, Copenhagen, Denmark, 9-12 May 2012, Vol 1-2. DFG - Bulletin 27* **2012**, pp. 837–844.
52. Jõelet, A.; Kukkonen, I.T. Physical properties of Vendian to Devonian sedimentary rocks in Estonia. *GFF* **2002**, *124*, 65–72, [<http://dx.doi.org/10.1080/11035890201242065>]. doi:10.1080/11035890201242065.
53. Kukkonen, I.; Lindberg, A. Thermal properties of rocks at the investigation sites: measured and calculated thermal conductivity, specific heat capacity and thermal diffusivity. *Working Report* **1998**.
54. Bauer, D.; Heidemann, W.; Diersch, H.J. Transient 3D analysis of borehole heat exchanger modeling. *Geothermics* **2011**, *40*, 250 – 260. doi:<https://doi.org/10.1016/j.geothermics.2011.08.001>.
55. Al-Khoury, R.; Kölbl, T.; Schramedei, R. Efficient numerical modeling of borehole heat exchangers. *Computers & Geosciences* **2010**, *36*, 1301 – 1315. doi:<https://doi.org/10.1016/j.cageo.2009.12.010>.