

# Explaining and Measuring Social-Ecological Pathways: The Case of Global Changes and Water Security

Thomas Bolognesi \*

Andrea K. Gerlak †

Gregory Giuliani ‡

November 20, 2018

## Abstract

The Social-Ecological Systems (SES) framework serves as a valuable framework to explore and understand social and ecological interactions, and pathways in water governance. Yet, it lacks a robust understanding of change. We argue an analytical and methodological approach to engaging global changes in SES is critical to strengthening the scope and relevance of the SES framework. Relying on SES and resilience thinking, we propose an institutional and cognitive model of change where institutions and natural resources systems co-evolve. Our model of change provides a dynamic understanding of SES that stands on three causal mechanisms: institutional complexity trap, rigidity trap, and learning processes. We illustrate how Data Cube technology could overcome current limitations and offer reliable avenues testing hypothesis about the dynamics of social-ecological systems and water security by offering to combine spatial and time data with no major technical requirements for users.

**Keywords:** Social-ecological system, water security, governance, institution, learning, data-cube

---

\*Institute GEDT, Department of Political Sciences and International Relations, University of Geneva, thomas.bolognesi@unige.ch.

†School of Geography and Development, University of Arizona; agerlak@email.arizona.ed.

‡Institute for Environmental Sciences, University of Geneva, gregory.giuliani@unepgrid.ch.

# 1 Introduction

Pressures on natural resources are increasing and a number of challenges need to be overcome to address growing population in a period of environmental variability. The key to sustainable development is achieving a balance between the exploitation of natural resources for socio-economic development, and conserving ecosystem services that are critical to human's wellbeing and livelihoods (Costanza et al., 2017). The policy objective of water security is symptomatic of this challenge (Bolognesi and Kluser, 2018; Dadson et al., 2017; Gerlak and Mukhtarov, 2015).

Water is a crucial natural resource supporting life on Earth and underpinning equitable, stable, and productive societies and ecosystems (Gain et al., 2016). The cumulative effects of overexploitation, pollution, and challenges posed by climate change demand to carefully monitor and assess trends and evolution of water resources (Lawford et al., 2013). This is an essential pre-condition to ensure a sustainable use and access to water that can serve as a basis for water security. This important role has been recognized as one of the seventeen Sustainable Development Goals (SDGs) defined by the United Nations. From a territorial management perspective, to support monitoring and reporting commitments and obligations, managers and decision-makers need information that is synoptic, consistent, spatially explicit and sufficiently detailed to capture anthropogenic effects (Scott and Rajabifard, 2017).

The Social-Ecological Systems framework combines different components to organize consistently the analysis of human and nature co-evolution (Ostrom, 2009). It is designed as a diagnostic tool to support identification of relevant variables that can determine sustainability in social-ecological systems and allow for analysis of relationships among levels and scales. As such, it contributes to provide a common framework to facilitate multidisciplinary research efforts, better understand and study the complexity of these systems (Ostrom, 2009), and allow for cross-institutional comparisons and evaluations (McGinnis and Ostrom, 2014). Yet, SES lacks a robust understanding of change because of a limited number of empirical studies and its use as a checklist (Schlager and Cox, 2018). We argue an analytical and methodological approach to engaging global changes in SES is critical to strengthening the scope and relevance of the SES framework. Identifying the methodological needs for carrying-out large-N (> 100 observations) dynamic analyses of SESs is needed for knowledge accumulation.

In this paper, we put forward a way to explain change and dynamics in SES that could be testable across a large number of cases. Current literature offers mainly in-depth investigations highlighting mechanisms and triggers of changes. Yet, there is a need to scale-up the knowledge toward more generalizable results (Ratajczyk et al., 2016; Robinson et al., 2018). Relying on SES and resilience thinking, we propose an institutional and cognitive model of change for SES where institutions and natural resources systems co-evolve. Our SES model of change offers a dynamic understanding of SES, and stands on three causal mechanisms: institutional complexity trap, rigid-

ity trap, and learning processes. We argue that this model of change can enable systematic and explanatory tests, and combine them.

Methodologically, we highlight current methodological limitations regarding measurement heterogeneity and time-limited analysis and emphasize the need for carrying out studies about SES dynamics. Then, we provide insights on how to operationalize this, mainly through measurement rather than methodological tools. The Data Cube technology could overcome current methodological limitations. This technology is a new big data tool providing ready for analysis dataset that combine earth observations data over years and over space (Giuliani et al., 2017a; Lewis et al., 2017). It requires no major technical skills from users or researchers and offers reliable avenues to test hypothesis about the dynamics of social-ecological systems and water security by offering to combine spatial and time data with no major technical requirements for users. We pose water security as an illustration of this analytical and methodological perspective because it is conducive to analyze human and nature interdependencies (Dadson et al., 2017; Gerlak and Mukhtarov, 2015) to highlight the spatial and time dimensions of SES. Indeed, water availability changes over space, time, and quality in consequence of human and natural trends (Bolognesi, 2015, 2018; Flörke et al., 2018; Gain et al., 2016; Vörösmarty et al., 2010).

First, we propose an institutional and cognitive model of change to feed the social-ecological system framework and frame analysis of SES evolution. Then, in section 3, we discuss the current methodological barriers to accumulate knowledge about SES evolutions and share recommendations to overcome them. We present the Data Cube technology and approach in section 4 as a promising to put in practice our recommendations and test the proposed model of change. Finally, we conclude by identifying the next steps and avenues.

## 2 SES and Evolution: Theoretical Framework

In this paper, we propose a robust understanding of change for social-ecological systems analysis. We argue that an analytical and methodological approach to engaging global changes in SES is critical to strengthening the scope and relevance of the SES framework. We begin by presenting an overview of SES and resilience scholarship, articulating the origins and scope of SES and resilience thinking and identifying the major concepts and most notable authors. Then we outline a model of change that addresses the two main phases of an adaptive cycle: saturation and reorganization. We use the concepts of rigidity trap and institutional complexity trap to explain the phases of saturation, and draw on the adaptive governance literature to explain the phase of reorganization. In addition, our model of change for SES draws on learning processes as important pathways in reorganization toward adaptation and responsiveness to changing environmental and social conditions. We craft a number of images to capture the various processes discussed and the overall model of change for SES.

## 2.1 SES and Resilience: Origins and Scope

A Social-Ecological System (SES) is “*an ecological system intricately linked with and affected by one or more social systems*” (Anderies et al., 2004). The Social-Ecological Systems framework further elaborates Elinor Ostrom’s Institutional Analysis and Development (IAD) and Marty Anderies and colleagues’ ones (Anderies et al., 2004; Ostrom et al., 2007; Schlager and Cox, 2018). It was intended to specify the biophysical aspects of the IAD framework (Schlager and Cox, 2018). The IAD framework has been updated through a rearrangement of the list of relevant attributes of governance systems to make it applicable to broader policy settings (McGinnis and Ostrom, 2014). Some emerging research aims to combine or integrate the IAD and SES frameworks to help overcome their individual limitations (SES framework as too static and the IAD framework as underspecified) and offer a more powerful framework that allows for deeper multilevel analyses of dynamic changes in social-ecological circumstances by making direct connections between institutional changes and social-ecological outcomes (Cole et al., 2014).

The SES perspective is closely linked to the resilience thinking (Gunderson and Holling, 2002; Ostrom and Janssen, 2005). While the SES framework relates to the structure of a system, resilience focuses on evolution. SES and resilience thinking conceive systems as moving across stability domains according to internal and external disturbances. Key variables of interest are interlinkages among the components of the system and the adaptation of the later according to its resilience. We adopt the social-ecological resilience thinking (Holling, 1996). Resilience is the magnitude of disturbance that can be absorbed before the system changes its structure by changing variables and processes that control behavior (Holling, 1996). Social-ecological resilience extends the ecological resilience (Holling, 1973) to the social world and distinguishes from engineering resilience (Pimm, 1984).<sup>1</sup>

The SES framework and resilience thinking together provide a consistent set of concepts for the analysis of co-evolution between humans and nature. As a consequence, most researchers use these frameworks as a “*checklist of concepts from which they could qualitatively or quantitatively measure their variables for the sake of case descriptions, case comparisons, or statistical analysis*” (Schlager and Cox, 2018, p. 243). To move toward more explanatory power, there is a need for internal theoretical models, especially regarding evolution and change (Fath et al., 2015; Lubell et al., 2014).

## 2.2 An institutional and cognitive model of change

### 2.2.1 Evolution through an adaptive cycle

With a better understanding of SES and resilience thinking as a framing, we now propose our model of change, beginning with the adaptive cycle. The global dynamics of a SES follows an adaptive cycle

---

<sup>1</sup> Engineering resilience considers changes as predictable and focuses on stability near to steady-state equilibrium. The key variable of interest is the recovery time, i.e., the speed of return to the steady-state equilibrium after a disturbance. In that perspective, the system does not change its structure.

that frames the co-evolution between humans and nature (Gunderson and Holling, 2002; Ostrom and Janssen, 2005). The adaptive cycle consists of a process of destruction-creation that drives the potential and the connectedness of the SES (Figure 1). SES's potential and connectedness increase within a stability domain until saturation, i.e., occurrence of non-absorbable disturbances. Then the SES adapts and reorganizes to move toward a new domain of stability. Two phases form the pattern of any adaptive cycle: the saturation and the reorganization phases. The first is a phase of growth until a turning-point where the SES becomes unstable because saturated. Mostly, this turning-point corresponds to a regime of over-exploitation without any additional or external stocks of resources. The next phase is marked by a release and a reorganization of the SES toward a new stability domain. After that, a new adaptive cycle starts.

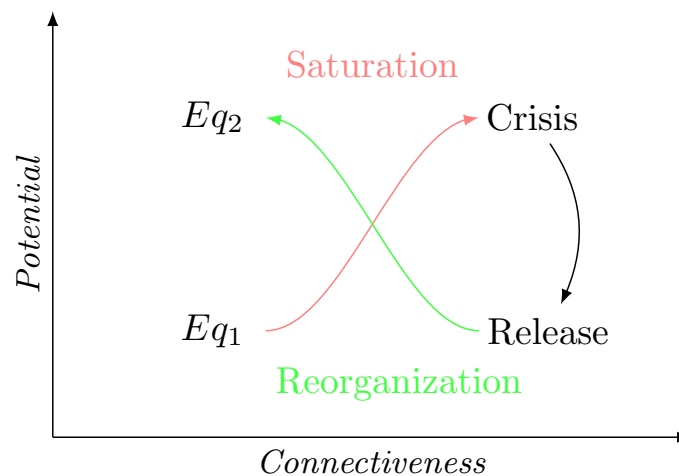


Figure 1: Heuristic scheme of an adaptive cycle

The adaptive cycle heuristics is widely used in SES analysis, but lacks of internal explanations of the patterns and triggers of change. To address this, we propose a model of change for SES that offers a theoretical background to the two main phases of an adaptive cycle – saturation and reorganization. We use the concepts of rigidity trap (i.e. a trend toward organizational status-quo) (Fath et al., 2015; Stedman, 2016) and institutional complexity trap (i.e. a trend toward institutional inefficiency) (Bolognesi and Nahrath, 2018; Bolognesi et al., 2017) to explain the phase of saturation. We draw on the adaptive governance literature to explain the phase of reorganization, elaborating from four ideal-types of reorganization pathways (Renou and Bolognesi, 2018) and the role of learning processes (Heikkila and Gerlak, 2018; Newig et al., 2016; Pahl-Wostl, 2009).

### 2.2.2 Explaining the saturation of an SES

The rigidity trap reflects the equilibrium where the SES's internal controls lock the system into a pathway that reinforces undesirable outcomes (Fath et al., 2015; Stedman, 2016). It is a dynamic

leading to an organizational status-quo which produce a vicious circle. It is a particular setting where the refinements of the management model and of the institutional design have organized exploitation of the resource characterized by a low natural diversity and a low variation in resource dynamics to maximize the economic use of the resource (Carpenter and Brock, 2008; Gunderson and Holling, 2002). The governance design appears robust because institutions are highly connected, self-reinforcing, and inflexible which constrains the innovation ability of the SES (Carpenter and Brock, 2008). Even if the outcome reveals to be undesirable, the SES is unable to explore any alternative patterns, increasing its vulnerability to disturbance. As a result, the system could not evolve anymore within the same stability domain and is likely to experience a structural crisis (Carpenter and Brock, 2008; Fath et al., 2015; Stedman, 2016). For example, a rigidity trap may be a SES organizing an ecologically clean over-exploitation of the resource, which is frequent when public policies do not distinguish the resource from its uses (Gerber et al., 2009; Varone and Nahrath, 2014).

The institutional complexity trap concept puts forward that the extent of the regulatory scope of a given SES has a decreasing marginal impact on its coordination efficiency (Bolognesi and Nahrath, 2018; Bolognesi et al., 2017). The governance of any environmental resource is a regime of multiple public policies and property rights specific to different uses of the same shared-resource (Gerber et al., 2009; Vatn, 2005). The regime efficiency (integration) to govern behaviors depends on the scope of regulated uses (extent) and the coherence of the public policies and property rights that structure the regulation.

Together extent and coherence increase the integration of the regime, and thus the potential efficiency of the governance design. This relation is not linear, the marginal impact of extent on integration is decreasing (Figure 2) (Bolognesi et al., 2017). Indeed, the increase of the regime extent impacts negatively on its coherence because of institutional overlaps and frictions. As an illustration, water uses are regulated by policies specific to agriculture, environment, urban planning, energy, among others; but these policies could be conflictual or not consistent while overlapping. These overlaps correspond to transversal transaction costs that reduce the efficiency of the coordination and lock the SES in a state of non-feasible additional progress under the same structural conditions. Indeed, the regime is no longer able to coordinate additional trade-offs between different uses and policy objectives (Banos-González et al., 2016; Vidal-Legaz et al., 2013) because transversal transaction costs limit the overall coherence of the regime. The SES becomes vulnerable to disturbances, opening the room for a release and marking the end of the saturation phase. Over time, expertise in governance stresses the increase of transversal transaction costs by developing siloization and uncoordinated extension of the regime (Cejudo and Michel, 2017).

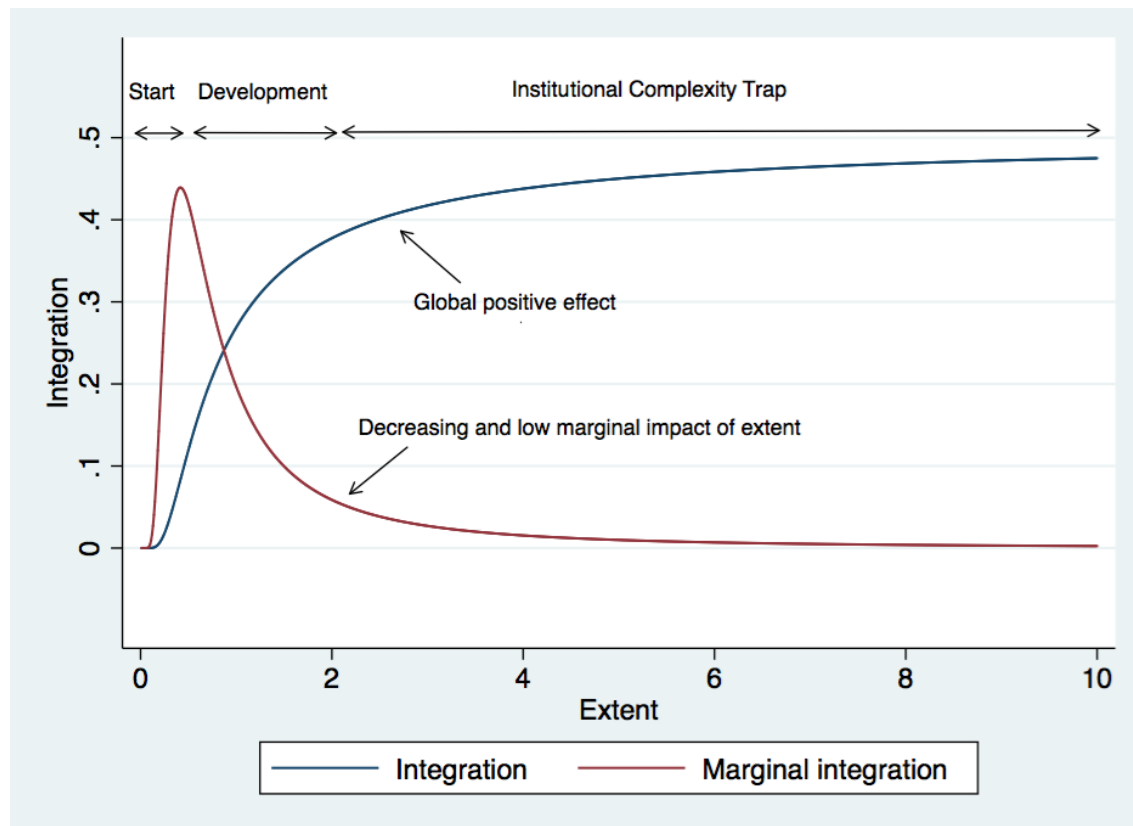


Figure 2: The saturation process through an Institutional Complexity Trap (Bolognesi and Nahrath, 2018)

The rigidity trap produces a lack of adaptive capacity and the institutional complexity trap constrains the ability to refine coordination mechanisms. Taken together, these traps drive the SES to a state where it is robust to shock but not necessarily resilient anymore. The SES is vulnerable to disturbances and likely to know a structural crisis, entering into the phase 2 of an adaptive cycle.

### 2.2.3 Explaining the reorganization of an SES

Phase 2 of the adaptive cycle is the reorganization, including a release and a reorganization process (Gunderson and Holling, 2002). SESs reorganize following the patterns of four ideal-types: integrative-synchronous regime, entrepreneurial-synchronous regime, resilient-synchronous regime, transformative-synchronous regime (Renou and Bolognesi, 2018). Each ideal-types has its logic of action and structuring principles depending on the nature of extension (control vs. self-determining) and the goal of the reorganization (poietic vs. dissipative) (Table 1). Extension is the process of producing new regulations, it is “by control” when lead by an administrative initiative, e.g. a public policy, and “by self-determination” when actors autonomously create new regulations, e.g. private contracts. These four pathways draw ideal-types, consequently the observed pathways should be hybrids of these.



Integrative synchronous regimes are problem-solving oriented, and change remains under control. The logic of action is to integrate the SES to reduce the misalignment between the different levels and scales of the SES (Teisman and Edelenbos, 2011). Even if this pattern implies changes in the structure of the SES, integrity remains an important goal. Entrepreneurial synchronous regimes are problem-solving oriented and evolve according to iterative change of components of the SES following a logic of effectuation that seeks to minimize losses (Sarasvathy, 2009). It is an organized form of micro-trial-error learning. Actors impulse reorganization in resilient synchronous regimes by seeking a new balance of the SES functions through reframing problems (Adger et al., 2005). The logic of action is resilience, and adaptability the structuring principle. Transformative synchronous regimes follow the most significant change, regarding structure, by reducing the role of control and reframing problems. Reflexivity is the structuring principle of this change.

	Autopoietic cohesion	Dissipative cohesion
Extension by control	Integrative synchronous regime	Entrepreneurial synchronous regime
	Logic of action: integration	Logic of action: effectuation
	Structuring principle: integrity	Structuring principle: subsidiarity
Extension by self-determination	Resilient synchronous regime	Transformative synchronous regime
	Logic of action: resilience	Logic of action: transformation
	Structuring principle: adaptability	Structuring principle: reflexivity

Table 1: Ideal-types of reorganization patterns (adapted from (Renou and Bolognesi, 2018))

In regard of these four ideal-types of reorganization patterns, there are critical questions arising from vulnerability research that speak to the desirability of particular system states with reorganization that address matters of societal costs and benefits around exposures, shocks and stressors and the ability of particular individuals and communities to cope and adapt (Adger, 2006; Bolognesi, 2015). It emphasizes that designing responses to stress is a trade-off between increasing the resilience of an SES and reducing its vulnerability to shocks (Miller et al., 2010; Young, 2010). Using the resilience perspective, we focus on how SESs could reorganize to increase their adaptability and emphasize the role learning.

In environmental governance, polycentric governance systems, involving multiple overlapping centers of decision-making interacting within an overarching set of rules, are thought to help address the complex interrelationships within our social and environmental systems (Heikkila et al., 2018). Polycentric governance systems exhibit enhanced adaptive capacity (Pahl-Wostl and Knieper, 2014; Silveira and Richards, 2013), adapting by changing rules and behavior as they gain experience. Learning can help support a governance system's adaptive capacity (Folke et al., 2005).

Learning is an important pathway toward adaptation and responsiveness to changing environ-



mental and social conditions. Rules structuring an environmental governance process can enable or constrain the institutional work of learning, and serve as a critical pathway toward institutional change (Heikkila and Gerlak, 2018; Newig et al., 2016; Pahl-Wostl, 2009). Openness in boundary, scope, information, and choice rules may support learning across a variety of contexts and institutional arrangements, but attention is needed to the different issue contexts and types of learning when thinking about specific design features (Heikkila and Gerlak, 2018). The deliberate creation of forums, for example, can bring together decision-makers to share information and learn (Galaz et al., 2012). But beyond the structure of the institutional design itself, the personal interrelationships and communication patterns, or social dynamics, can play a key role in promoting and inhibiting learning (Heikkila and Gerlak, 2013). Although a deliberate push for polycentric resource management can help encourage rule experimentation, some researchers found that it may not necessarily encourage adaptation and learning (McCord et al., 2017).

There are different types learning that can influence reorganization. Serial learning (sequential) differs from parallel learning (simultaneous) and it is noteworthy that the source of learning can be endogenous or exogenous, i.e. others jurisdictions or policy fields (Newig et al., 2016). In addition, the concept of triple-loop learning allows for identifying the level of learning, and thus the impact of learning on the SES reorganization (Pahl-Wostl, 2009). Single-loop learning is incremental; it proceeds of the same pattern of SES dynamics (integrative and entrepreneurial synchronous regime). Second-loop learning leads to question the cause effect relationship between components of the SES (resilient synchronous regime). Triple-loop learning is paradigmatic change and allows for deep transformation and reorganization of the SES toward a new equilibrium (transformative synchronous regime). The challenge to reorganize an SES is to develop channels for triple-loop learning.

Learning can support innovation in the SES as its implementation reorganizes the SES and proceeds through institutional crafting. Actors use the learning in problem-solving perspective solving to improve governance and decision-making (Cleaver, 2002; Ostrom and Basurto, 2011; Poteete et al., 2010). Learning can result in a change of the structure of the linkages between resource uses and institutions. The network turns from a closed-loop – characterized by rigidity and institutional complexity traps - to more open ones (Fath et al., 2015; Heikkila and Gerlak, 2018; Lubell et al., 2014).<sup>2</sup> As a consequence, reorganization of an SES necessitates triple-loop learning in association with an opening of the network of uses, resources and institutions.

Figure 3 synthesizes our institutional and cognitive model of change of an SES. The attraction into a rigidity trap or an institutional complexity trap saturates SES over the years. The SES becomes vulnerable to external disturbances and is likely to experience a crisis. The crisis opens a phase of release that ends-up with the reorganization of the SES. The reorganization consists

---

<sup>2</sup> “Characteristics of a rigid system include very few key nodes with a high concentration of influence, and low diversity both in nodes and pathways” (Fath et al., 2015, p. 4).

of embedded pathways of change (multiple spatial and time scales) and is driving by individual learning, innovation, and diffusion. These three drivers allow for a paradigmatic shift of the SES structure, opening the network of actors. It defines a new equilibrium with a more balanced relationship between ecological and social systems, and with more flexibility and adaptability.

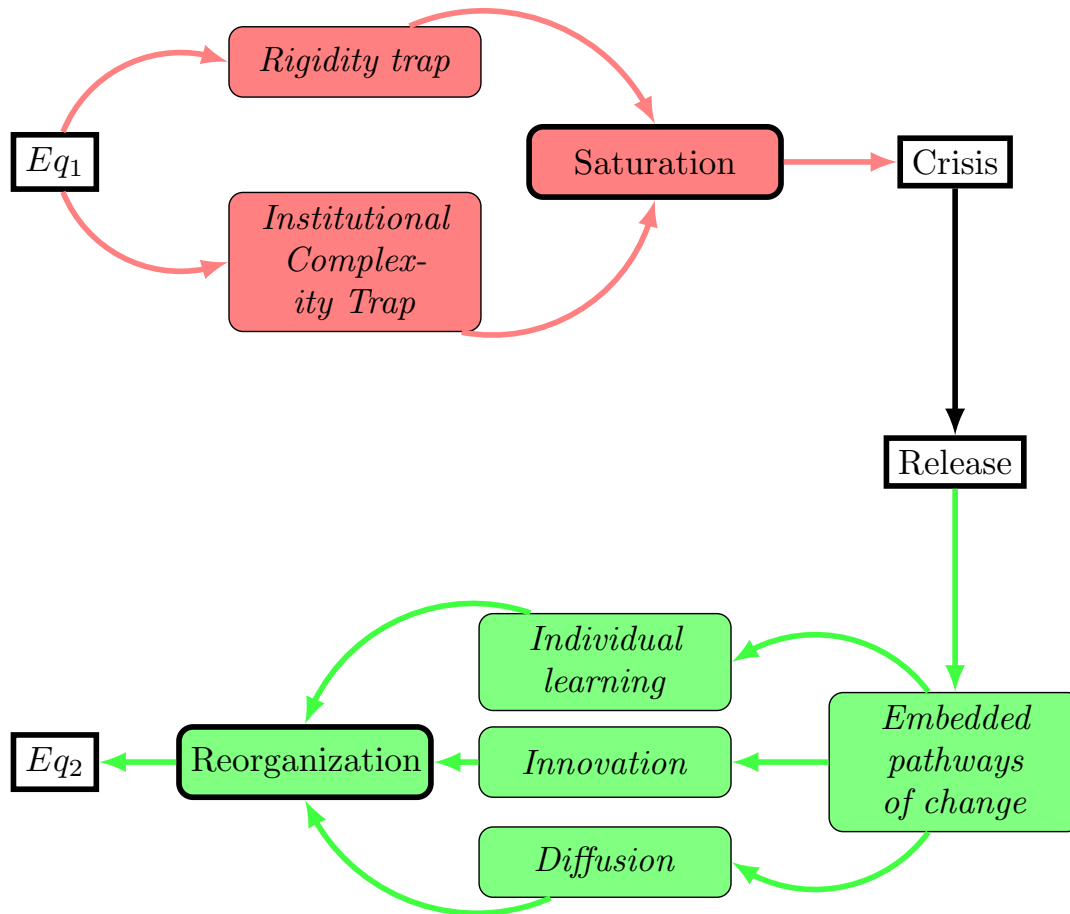


Figure 3: An institutional and cognitive model of change for SES

### 3 SES Evolution and Measurement: insights from the case of water security

In section 2, we proposed a model to understand the dynamics of SES, which is crucial in a context of global transformations. In this section, we shed lights on key methodological limitations that prevent reliable tests of the institutional and cognitive model of change of SES, and knowledge accumulation. We put forward recommendations to tackle these methodological issues. We use the

case of water security as an illustration of SES measurement. Water security makes for a good illustration given its high-priority in the political agenda, its fundamental social-ecological essence, and its multi-level and multi-uses perspective.

### **3.1 Limitations to general knowledge about water security: measurement heterogeneity and time-limited analyses**

Over the past decade, water security has emerged as a new currency of the international water community (Cook and Bakker, 2012). It can broadly be seen as an extension of sustainable development thinking to water resources with the focus on the quantity and quality of water supply for societal and ecological needs (Gerlak and Mukhtarov, 2015). There is an extensive and growing body of scholarship examining the adoption of and application of water security in a wide array of journals and from a diverse set of authors across diverse geographic regions and scales around the world (Gerlak et al., 2018; Huai and Chai, 2016). In bridging both the environmental and social spheres, water security can be seen as a tool for the adaptive management of an institutional water regime and contribute to improved governance (Bolognesi and Kluser, 2018). But knowledge accumulation is limited in that area of research.

We argue that there are three primary factors that limit knowledge accumulation around water security and thereby, hinders its ability to serve as a tool for adaptive management of SESs: large diversity of methodology, case specificity, and cross-sectional studies. The two first limitations prevent comparability and thus the external validity of findings. The former is a matter of internal validity; dynamic mechanisms are not properly observed or tested which prevents inferential and causal claims.

The first limitation that prevents knowledge accumulation around water security is heterogeneity of measurement of water security. There has been an explosion of assessments of water security. The analysis of the 124 empirically-based studies recorded in Scopus between 2010 and 2015 highlights that indicators to operationalize water security vary considerably around the world (Gerlak et al., 2018). The authors report the use of 15 sub-indicators, and that the majority of the studies use only two of them: sufficient quantity (91% of the studies) and acceptable quality (51% of the studies). This large methodological diversity is also characterized by a diversity of conceptual frameworks, which serves to limit comparison. Indeed, they are generally characterized by a high subjectivity which can reduce the relevance of their normative use (Bolognesi and Kluser, 2018). For instance, water security scores of Vietnam, Thailand, the Philippines, and Kyrgyzstan are contradictory in the literature, being good or weak depending on the study (Bolognesi and Kluser, 2018). This heterogeneity is consequential considering the current evidence-based policy-making paradigm. What “evidence-based” means regarding such an extensive range of appraisal? In addition, it actively prevents the growth of a Scientific-common knowledge because opposing measures of common ob-

servation units are shared with the same label – without mentioning this diversity.

The second limitation is case specificity in terms of how we study and understand water security. There is a growing body of place-based research that investigates how water security is adopted, engaged, and implemented in various environmental and social contexts around the world. 21% of peer-reviewed studies published between 2010 and 2015 and dealing with water security are place-based cases (Gerlak et al., 2018). The persistent diversity in perspectives and applications of water security suggests that scholars adapt the concept to the contexts of the cases they are studying. In the same sample of studies, 60% of the studies using a definition of water security offer a new definition, and thus are case-based (Gerlak et al., 2018). While this can suggest the need for a more community-context view to understand and realize water security, it might also suggest a limited generalizability of water security and hinder our knowledge of water security.

Finally, the third limitation of knowledge accumulation around water security focuses are static, or measuring cross-sectional, meaning that samples cover only one period of time (mostly a year). It prevents the study of water security evolution, and of SESs more generally. As an illustration, a significant strength of water security in comparison to Integrated Water Resource Management (IWRM) and nexus -competing concepts – is that water security is thought as a lever of development and transitions (Bolognesi and Kluser, 2018; Dadson et al., 2017). IWRM and Nexus consist mostly of refining an existing situation without any systemic change in most cases (Al-Saidi and Elagib, 2017; Wichelns, 2017). IWRM and nexus-based governance concepts are prone to institutionalizing the saturation of the SES. Regarding our institutional and cognitive model of change, we could assume that they frame integrative and entrepreneurial synchronous regimes mainly. Existing dataset prevent to test this core assumption which impedes to analyze the impact of social reforms on the ecological outcome of an SES.

### **3.2 Dealing with measurement disparity and evolution: recommendations to reinforce external and internal validity**

To overcome methodological heterogeneity and case-specificity that constrain external validity of studies, we recommend to (1) enlarge the number of observations; (2) carry out a replicable empirical strategy; and (3) include a time dimension. First, increasing the number of observations and cases automatically increase the external validity as it reduces to the case-dependency of results. In addition, it makes easier the identification strategy and to delineate impacts of contextual variables (climate, economic activity, etc.) from effects of explanatory variables (learning processes, institutional setting, resource uses, etc.). Seven prominent databases that contain SES or Commons related dataset exist. Recommendations have been formulated to favor their use in a replicable and consistent manner (Ratajczyk et al., 2016). These datasets cover about 2000 cases, and coding

strategies are all based on the SES or IAD framework, which limits inconsistency among studies.<sup>3</sup> The literature on water security should gain in developing this kind of common research practice and data sharing.

Second, replicable research design is a necessary condition for expending datasets over time, by adding new observations or variables and by facilitating merging dataset. The choice of raw data and coding strategy are critical. We recommend using data that are reliable, free and “protected” to ensure their accessibility over space and time. Coding strategy contributes to reach this goal. It should be clear, not case-dependent and easy to replicate over a large number of observations. In this regard, automated-coding looks necessary. It is widely used to analyze the resource and its characteristics but remains rare and difficult in the study of institutions and actors relationships. Recent methodological progress in social sciences enables (semi) automated-coding of institutions-actors attributes. For instance a dataset links actor, rule, and the deontic categories of Ostrom’s institutional grammar (Ostrom, 2005) to study polycentricity across 11 Colorado oil and gas regulations (Heikkila and Weible, 2018). In that way, they produce a convincing measure of polycentricity and other network attributes that could be transposed to the analysis of the rigidity trap. Discourse network analysis (Leifeld, 2013) techniques could be used to appraise the degree of institutional innovation and its diffusion to depict the logic of actions SES pathways of change (Renou and Bolognesi, 2018) and reorganization of SESs. Finally, inferential network analysis (Cranmer et al., 2017) methodologies permit tests of causality between these institutional characteristics and actor attributes with environmental outcomes in a pervasive manner. Geographical factors are of primary importance in an SES (Lubell et al., 2014), in the same line, space and scale play a critical role in the water security (Gerlak et al., 2018). As a consequence, SESs studies must have a spatial dimension and ideally include GIS information into databases. It is decisive to identify central actors, rules, context path-dependencies and scale-related non-linearity.

Finally, analysis of change necessitates including time-related variables like date, time lag, event history. While it seems to be a commonplace, it is not a trivial challenge. Methodologies to study ecological patterns in SES exist (Epstein et al., 2015, 2013; Janssen et al., 2007; Vogt et al., 2015) but measuring and observing social components over the years remains difficult. As a consequence, a very few studies manage with change over the time. The first attempt to model feedback between water security, risk and economic growth is very recent (Dadson et al., 2017) and researchers start to draw and share lessons from their experience in modeling coupled human-natural systems (Robinson et al., 2018).<sup>4</sup> It is consistent with our previous recommendations: common language, open-access

<sup>3</sup> Two important meta-database initiatives include (1) SESMAD, 2014. Social-Ecological Systems Meta-Analysis Database: Background and Research Methods. Available from: <http://sesmad.dartmouth.edu/>; and (2) Resilience Alliance and Santa Fe Institute. 2004. Thresholds and alternate states in ecological and social-ecological systems. Resilience Alliance. (Online.) [http://www.resalliance.org/index.php/thresholds\\_database](http://www.resalliance.org/index.php/thresholds_database).

<sup>4</sup> “The following eight lessons were identified that if taken into account by future coupled human–natural-systems model developments may increase their success: (1) leverage the power of sensitivity analysis with models, (2) re-member modelling is an iterative process, (3) create a common language, (4) make code open-access, (5) ensure

code, considering spatio-temporal mismatch, homogeneous units reveals indispensable. Transposing qualitative materials into quantitative materials to study water resource regimes extent, coherence and integration over centuries seems to be a fruitful avenue (Bolognesi and Nahrath, 2018). Coupling these types of analyses with environmental outcomes seems promising to the analyses of SESs evolution and the identification of global changes as exogenous shocks. Consequently, we recommend including a time-variable in each study even if the research is time invariant. This would facilitate future aggregations of existing studies and enable dynamic analysis of SES evolution.

## 4 Earth Observations for Water Security: The Data Cube

We identify three primary methodological limitations to testing our institutional and cognitive model of change of SES. The case of water security studies highlights significant issues related to measurement heterogeneity, case specificity and static perspective. The Data Cube technology could help overcome current limitations and offer reliable avenues to test hypothesis about the dynamics of social-ecological systems and water security by combining spatial and time data with no major technical requirements for users.

### 4.1 Earth Observation data to consider the spatial dimension of SES and water security

Remotely-sensed Earth Observations (EO) data appears to be necessary materials to take into account the spatial dimension of water security, and SES in general. Acquired by satellites together with in-situ measurements, they are a source for effective, quantitative and integrated capabilities (e.g., social and ecological) to monitor trends and variability for social-ecological systems. Regarding water security, authors already scrutinize water quantity and quality (Lawford et al., 2013; Lehmann et al., 2014). With EO data, one can map and monitor water bodies. Optical and radar sensors help identifying changes in area and water quality information can be obtained by applying algorithms to retrieve information (e.g., total suspended matter, chlorophyll content) from water colour (Concha and Schott, 2016). Usually, spatial resolution is about 10-30m and temporal resolution is about 5-15 days.

One of the main advantages of using EO data is that it provides information at the pixel level and therefore it can be then aggregated or disaggregated according to ecological or social variables to ensure the spatial fit of the components of an SES. For example, a network of actors can be represented following its spatial perimeter and then can serve as the basic statistical unit from which pixel values can be aggregated and various statistical information can be derived using zonal statistics. Such an approach suits for analysis of spatial mismatch between actors, institutions and resource (Ingold et al., 2018), but with large N dataset which allows inferential analysis. As a

---

*consistency, (6) reconcile spatio-temporal mismatch, (7) construct homogeneous units, and (8) incorporating feedback increases non-linearity and variability.” (Robinson et al., 2018, p. 896).*



consequence, the analysis is not framed by administrative boundaries but by the footprint of the variables of interest. In addition, this strategy of data collection could be use for treatment effect research design by allowing to test the treatment in space or over time. As an illustration, the impact of the institutional complexity trap on resource use could be tested robustly.

Two principal missions allow retrieving EO data related to water security. Firstly, the Gravity Recovery and Climate Experiment (GRACE) mission allows tracking anomalies of the Earth's gravity field and consequently extract information on groundwater resources. Secondly, the Soil Moisture and Ocean Salinity (SMOS) mission enables mapping soil moisture and can provide useful information for monitoring droughts and extreme events. Other information can be generated from EO data such as precipitation, evapotranspiration, land cover, snow, temperature, that are all important variables to monitor the water cycle (Lehmann et al., 2014). Usually EO data are processed to generate information products that describe real-world variables, and these products are in turn converted into evidence-based information for decision support (Giuliani et al., 2017b).

#### 4.2 The data cube to make EO-based research replicable over time and space

Measurement heterogeneity and non-replicability are significant limitations to the study of SES dynamics. EO Data Cubes overcome these limitations. EO data can provide an efficient and effective mechanism to support water security monitoring. However, the full potential information of EO data is difficult to realize mainly because of their complexity, increasing volume, and the lack of efficient processing capabilities (Lehmann et al., 2017; Purss et al., 2015). Consequently, new approaches are required to rapidly analyze data in a transparent and repeatable manner and to facilitate the transformation of large amounts of EO data into actionable information and decision-ready products (Giuliani et al., 2017b). Data cubes are part of these new approaches.

To tackle these issues and bridge the gap between users' expectations and current Big Data analytical capabilities, EO Data Cubes (EODC) are a promising solution to store, organize, manage and analyze EO data. The main objective of EODC is to facilitate EO data usage by addressing Volume, Velocity, Variety challenges, and providing access to large spatio-temporal data, for a given geographic area over a specified time period, in an analysis ready format (Giuliani et al., 2017a). EODC reveals to be a promising tool for analyzing SES dynamics and testing the institutional and cognitive model of change.

With EODCs, researchers could address the current methodological limitations enabling reliable and causal analysis of SES dynamics. It constitutes a data infrastructure offering: open access materials, systematic measurements and sample combination in a versatile format. As a consequence, it facilitates replicable empirical strategies, common measurements and enlarging sample size by including new geographic areas and new time periods. Because of the versatility of EODC, EO data can be merged with social data, we can build an integrative dataset of SES. For instance,



with EODC, a discourse network analysis dedicated to grasp degrees of institutional innovation in learning process could be combined with water flows and water quality information over years.

There are four different technologies currently operational namely the Open Data Cube supported by Digital Earth Australia (Lewis et al., 2017), the EarthServer (Baumann et al., 2016), or the Google Earth Engine (Gorelick et al., 2017), and E-sensing (Maciel et al., 2018). These initiatives are paving the way to broaden the use of EO data to larger communities of users; they represent about 50 different implementations worldwide supporting decision-makers with timely and actionable information converted in meaningful geophysical variables; and ultimately are unlocking the information power of EO data. For example, the Swiss Data Cube holds currently 34 years of Landsat (1984-2018) and 3 years of Sentinel-2 (2015-2018) Analysis Ready Data (ARD)<sup>5</sup> over Switzerland (Giuliani et al., 2017a). This corresponds approximately to 7000 scenes from 194 to 2018 for a total volume of 4TB of ARD and more than 110 billion observations that can be converted in different environmental variables.

Most of these EODC implementations are using Landsat data, partly because it is the oldest EO program, providing continuous observations for more than 45 years. In addition, since 2008 the entire data archive is freely and openly accessible (Wulder et al., 2012). This creates an unprecedented opportunities to use Landsat data in different contexts such as land cover changes, ecosystem mapping or water monitoring (Pasquarella et al., 2016; Tulbure et al., 2016). Besides Landsat, the Sentinels program, operated by the European Space Agency (ESA), forms another valuable EO data source. Sentinels are part of a satellite's constellation for the operational need of the European EO program called Copernicus (ESA, 2017; Malenovský et al., 2012). These two exhaustive sources favor establishing common, reliable and precise measurements that minimize the risk of missing data over time and space.

Among the major benefits of EODC is that it makes data analysis easier, facilitating data access and distribution and lowering the technical barriers for managing and processing large amounts of EO data (Figure 4). Traditionally, satellite imagery is downloaded, processed and provided to users on a custom basis. This process serves a single purpose each time analyzing data locally (e.g., desktop computer) and downloading data on scene-based file. With the paradigm shift advanced by EODC information becomes available more rapidly, the burden of data preparation and usage is drastically reduced (Dhu et al., 2017; Lewis et al., 2017). Moreover, the data quality is enhanced as Analysis Ready Data are homogenous. They are combined in a consistent workflow offering pre-processed data with the same procedure along the entire time-series. Similarly, it makes easier the

---

<sup>5</sup> An essential pre-condition to support user applications and generating usable information products is to facilitate data access, preparation, and analyses. The systematic and regular provision of Analysis Ready Data (ARD) can significantly reduce the burden of EO data usage. To be considered as ARD, data should be processed to a minimum set of requirements (e.g., radiometric and geometric calibration; atmospheric correction; metadata description) and organized in a way that allows immediate analysis without additional effort. ARD correspond in optical imagery to surface reflectance products.

cross-checking with other databases because data can be accessed through interoperable Application Programming Interfaces (APIs). This allows to seamlessly integrate data coming from various sources into a single analysis in a very efficient and effective manner. Consequently, the widespread availability of EO data, the advent of Analysis Ready Data, and the large processing capabilities provided by High Performance Computing (e.g., clouds, clusters) allow envisioning supporting policy frameworks like the SDGs (Anderson et al., 2017). EODC can provide the long baseline required to determine trends, define present, and inform future, and thus provide a good fit between the analytical scope of SES evolution and empirical tests.

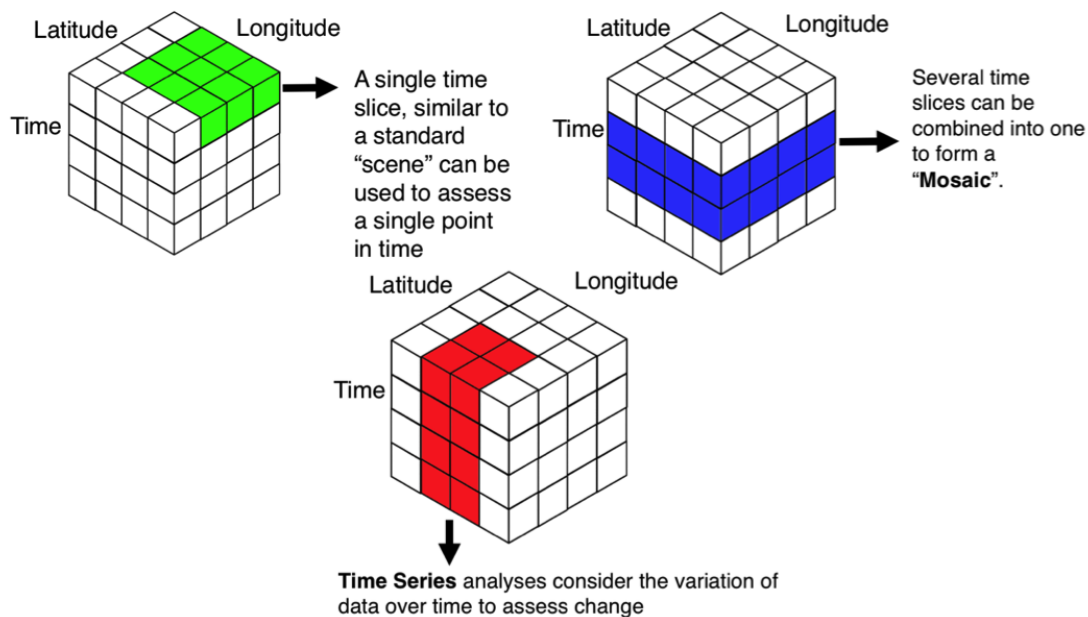


Figure 4: Sampling in a Data Cube (adapted from (Killough, 2018))

#### 4.3 Avenues for implementing an analysis of water security dynamics through Data Cube

Currently, the most advanced EODC implementation is represented by Digital Earth Australia (DEA) that already developed some interesting information products related to water management. In particular, using the Water Observations from Space (WOfS) they map the presence and extent of surface water over the entire country using 27 years of Landsat observations (Lewis et al., 2016). It allows for flood risk assessment, agricultural water tracking, and mangrove monitoring. Similarly, Australia has developed an algal bloom early warning alert system informing the SDG 6 (clean water and sanitation). This initiative contributes to build common and replicable measurements of the water security ecological system.

We argue combinations of these measurements of the ecological system with variables about the social system related to water security, namely institutions and actors, is promising. Moreover,

there is a momentum for these combinations as social sciences recently developed new methods for collecting information and coding variables about institutions and actors configurations (Bolognesi et al., 2017; Heikkila and Weible, 2018; Leifeld, 2013). For instance, these new methods allow for systematic measurement of polycentricity and policy content with a large number of observations over time and space. It could advantageously be merged with ecological dataset. Then, because the dataset has a time dimension, it becomes possible to analyze patterns of change. For instance, we could appraise the impact of socio-institutional changes in oil and gas regulation (Heikkila and Weible, 2018) on water quality. Regarding the on-going debates about fracking, it would result in substantial added-values for both science and policy-making. More generally, it enables to link fine-grained measurements of polycentricity with water resources and thus to provide new insights into influential water governance paradigms such as the Integrated Water Resource Management.

Regarding water security, EODC paves promising avenues in the use of the Water Security Index (WSI) (Gain et al., 2016). The WSI results from a quantitative and integrated (e.g. physical and socio-economic) approach to develop a spatial multi-criteria analysis framework. The index combines four criteria ‘availability’, ‘accessibility to services’, ‘safety and quality’, and ‘management’, based on the measurement of ten indicators (Table 2). Indicators about water availability are at the 0.5° spatial resolution while the other indicators are at the country or river scales, and the time coverage excludes dynamic analysis.

Security criteria (weights)	Indicators (weights)	Spatial and temporal scales
Availability (45%)	Water scarcity index (70%)	0.5° spatial resolution; Monthly mean value of 2010
	Drought index (15%)	0.5° spatial resolution; Monthly mean value of 2012
	Groundwater depletion (15%)	0.5° spatial resolution; Monthly mean value of 2010
Accessibility to water services (20%)	Access to sanitation (40%)	Country scale; 2014
	Access to drinking water (60%)	Country scale; 2014
Safety and quality (20%)	Water quality index (50%)	Country scale; 2012
	Global flood frequency (50%)	Country scale; 1985-2003
Management (15%)	World governance index (70%)	Country scale; 2010
	Transboundary legal framework (15%)	River Basin scale; 2015
	Transboundary political tension (15%)	River Basin scale; 2015

Table 2: Composition of the Water Security Index (adapted from (Gain et al., 2016))

A first avenue is to take advantage of EODC versatility to replicate the measure of the WSI and expand its time coverage to several decades. It would allow observing changes in water security situations and in relations between the criteria of WSI (e.g. Accessibility to water services with

Safety and quality). Then, the longitudinal measure of the WSI could be combined with accurate measures about actors and institutions, i.e. under the country scale. Because EODC facilitates spatial matching thanks to disaggregating-reaggregating pixels procedures, one could test our institutional and cognitive model of change for SES (Figure 3). For instance, it allows estimating the association of new regulations with WSI changes to grasp the institutional complexity trap dynamic. This would allow identifying the level of saturation of SESs (see Figures 1).

The potential contribution of EODC for water security is wider than expanding the use of the WSI. EODC allows measuring an index that corresponds more with the water systems and current use of the resource. For instance, ecological structure is a critical component of any SES. With EODC, it is possible to characterize the river degree of fragmentation and the water extent. EODC allows observing total suspended matter and chlorophyll content in water bodies which will enable for appraising water quality in the past (where no sampling have been made) and in the future reliably.

EODC offers accurate measures of water-related hazards, for example, to observe floods and droughts events and to determine human and economic exposure by crossing the spatial extension of events with population and economic datasets. A concrete illustration is the mapping of water extent dynamics across the entire Australian continent (Lewis et al., 2016). Using EODC, the mapping combines observations of permanent and temporary water bodies at 30m resolution, with a temporal resolution of 15 days during 27 years. Such information gave insights on presence and frequency of occurrence of surface water across various spatial scales ranging from a few tens of meters about to the entire continent. It gave key information about spatial and temporal extents of significant stream flows and floods. Another example is the PreView Global Risk Data Platform using more than 30 years of EO data to map floods and droughts at the global scale (Giuliani and Peduzzi, 2011). It allows determining human and economic exposure as well as associated risks (Peduzzi, 2017). This can give essential information on socio-economic aspects related to natural hazards.

These EODC tools could be used to set up experimental research design, and use causal modeling to test our model of change for SES. For instance, the institutional complexity trap has been studied in the case of flood policy in Switzerland by showing an unexpected increase in institutional overlaps and conflicts that should limit regulation efficiency (Bolognesi et al., 2017). With the PreView Global Risk Data Platform, we could link this increasing complexity of the Swiss flood regulation with exposure to floods. Learning could be tested as well. Since the 1960ies, changes in experts influence significantly impacted Dutch and American flood governance in order to limit exposure to floods during (Bergsma, 2018). Linking these changes with accurate measures about floods, through EODC, allows for a systematic analysis of the reorganization of SESs.

These avenues highlight that the versatility of the EODC enables research designs with treatment effect, and therefore causal inference. Indeed, natural experiments are rare in the social world and ecological information are not reliable or accessible worldwide and for every time. Consequently, elaborating robust experimental designs for SES analysis reveals extremely difficult. With EODC, if we observe a change in relevant social variables (e.g. new policies or new information initiating or diffusing learning), we could design robust causal tests which would advance empirical and theoretical knowledge about SES dynamic.

## 5 Conclusion and next steps

In this paper, we propose a model of change for SES that explains how institutions and natural resources systems co-evolve. In doing so, we offer a more dynamic understanding of SES that stands on three causal mechanisms: institutional complexity trap, rigidity trap, and learning processes. We rely on the adaptive cycle heuristic and focus on the saturation and the reorganization phases of a SES. We discuss how rigidity traps and institutional complexity traps drive the saturation of an SES until a crisis. Rigidity traps reduce adaptive capacity (i.e. the ability to explore alternative patterns) while institutional complexity traps reduce the ability to refine coordination mechanisms (i.e. the marginal effectiveness of new institutions). After a crisis, four ideal-types grasp the SES's diversity of reorganization patterns. We discuss how transformative and resilient synchronous regimes are more likely to frame a rebound. We argue that learning processes are pivotal in defining the ideal-type of reorganization pattern that the SES is likely to follow. Learning mechanisms and capacities contribute to determine the level of innovation and its scope of diffusion in a reorganizing SES.

This model of change offers many testable propositions however, there are three main methodological limitations that prevent hypothesis testing and results-comparison. We highlighted these limitations using water security as an illustrative case. These limitations include: heterogeneity of measurement, case specificity and static perspective. These methodological limitations bound the external validity and reproducibility of research designs that address SES dynamics. We suggest three primary recommendations to overcome these limitations: (1) increase number of observations and the geographic scope; (2) provide replicable measurements regarding both data availability and method transparency; and (3) include time variables in the analysis – even in the case of panel dataset.

Finally, we put forward Earth Observation Data Cubes (EODC) as a promising avenue to address these methodological limitations and recommendations, and thus to contribute to a better understanding of SES dynamics. Earth observations enable focusing on the spatial dimension of SESs and water security, but they are difficult to perform. Data cubes provide Earth Observations through a handy interface, excluding complex technical knowledge from the users, and combine data over the years reduced. They make easier the combination of social and ecological data over a

large number of observations and facilitate broadening the space and time coverage; which makes it a unique tool for testing generalizable propositions of SES change. Moreover, data cubes enable the data structure fits with the theoretical unit of analysis. Indeed, the basic unit of EODC is the pixel, but then pixels could be aggregated according to the analytical needs. It means the dataset is less dependent of administrative boundaries but could stick with the resource footprint for instance.

Overall, our contribution to the scholarship and research on SES is threefold. First, we provide a model of change to enable causal hypothesis on the evolution of SES. Second, we identify three methodological limitations preventing from reliable and generalizable results on the evolution of SES through an illustration of water security. Finally, we propose new tools through the Earth Observation Data Cubes to overcome these limitations and enable an easy combination of social and ecological data over space and time.

As next steps, we foresee two primary way to combine social and ecological datasets. The first way consists of building a georeferencing social network and linking this with ecological system (Lubell et al., 2014). The second way is to give a spatial perimeter to institutions and to link this with the ecological system. This has been recently done to highlight spatial misfits (Ingold et al., 2018), but it could be used to analyze institutional complementarities, in relation with the institutional complexity trap mechanism, or mechanism of learning and diffusion to studies reorganization patterns in a dynamic way. However, with only four operational data cubes in Australia, Colombia, Switzerland and Taiwan (but with many more appearing<sup>6</sup>), there remain challenges to data cubes extensive use. Further, harnessing the full potential of EO data for supporting informed decision-making on water security requires developing new algorithms (e.g., water related indices, aggregations methods) and tailored applications specific to the water security domain. Finally, we invite researcher to share their data in a common and free access repository to accelerate knowledge accumulation by favoring comparison, cross-analysis, and collaboration.

---

<sup>6</sup> Recently, the African Regional Data Cube has been launched covering Kenya, Senegal, Sierra Leone, Ghana, and Tanzania. Other EODC are under development in Vietnam, Uganda, United Kingdom, Georgia and Moldova and more that 30 other countries have expressed interest. The long-term objective is to have continental or even global coverage.



## References

- Adger, W. N. (2006). Vulnerability. *Global Environmental Change*, 16(3):268–281.
- Adger, W. N., Brown, K., and Tompkins, E. L. (2005). The Political Economy of Cross-Scale Networks in Resource Co-Management. *Ecology and Society*, 10(2).
- Al-Saidi, M. and Elagib, N. A. (2017). Towards understanding the integrative approach of the water, energy and food nexus. *Science of The Total Environment*, 574:1131–1139.
- Anderies, J., Janssen, M., and Ostrom, E. (2004). A Framework to Analyze the Robustness of Social-ecological Systems from an Institutional Perspective. *Ecology and Society*, 9(1).
- Anderson, K., Ryan, B., Sonntag, W., Kavvada, A., and Friedl, L. (2017). Earth observation in service of the 2030 Agenda for Sustainable Development. *Geo-spatial Information Science*, 20(2):77–96.
- Banos-González, I., Martínez-Fernández, J., and Esteve-Selma, M. A. (2016). Using dynamic sustainability indicators to assess environmental policy measures in Biosphere Reserves. *Ecological Indicators*, 67:565–576.
- Baumann, P., Mazzetti, P., Ungar, J., Barbera, R., Barboni, D., Beccati, A., Bigagli, L., Boldrini, E., Bruno, R., Calanducci, A., Campalani, P., Clements, O., Dumitru, A., Grant, M., Herzig, P., Kakalettris, G., Laxton, J., Koltsida, P., Lipskoch, K., Mahdiraji, A. R., Mantovani, S., Merticariu, V., Messina, A., Misev, D., Natali, S., Nativi, S., Oosthoek, J., Pappalardo, M., Passmore, J., Rossi, A. P., Rundo, F., Sen, M., Sorbera, V., Sullivan, D., Torrissi, M., Trovato, L., Veratelli, M. G., and Wagner, S. (2016). Big Data Analytics for Earth Sciences: the EarthServer approach. *International Journal of Digital Earth*, 9(1):3–29.
- Bergsma, E. (2018). Expert-influence in adapting flood governance: An institutional analysis of the spatial turns in the United States and the Netherlands. *Journal of Institutional Economics*, 14(3):449–471.
- Bolognesi, T. (2015). The water vulnerability of metro and megacities: An investigation of structural determinants. *Natural Resources Forum*, 39(2):123–133.
- Bolognesi, T. (2018). *Modernization and Urban Water Governance: Organizational Change and Sustainability in Europe*. Palgrave Macmillan UK, London.
- Bolognesi, T. and Kluser, S. (2018). Water security as a normative goal or as a structural principle for water governance. In *A Critical Approach to International Water Management Trends: Policy and Practice*, Palgrave Studies in Water Governance: Policy and Practice. Palgrave MacMillan, London.
- Bolognesi, T. and Nahrath, S. (2018). Environmental Governance Dynamics: Some micro foundations of macro failures. *SSRN*, 3163828.
- Bolognesi, T., Nahrath, S., and Metz, F. (2017). Why Resource Regimes Fail in the Long Run? The Role of Institutional Complexity Traps and Transversal Transaction Costs. *SSRN*, 2991551.
- Carpenter, S. and Brock, W. (2008). Adaptive Capacity and Traps. *Ecology and Society*, 13(2).
- Cejudo, G. M. and Michel, C. L. (2017). Addressing fragmented government action: coordination, coherence, and integration. *Policy Sciences*, 50(4):745–767.



- Cleaver, F. (2002). Reinventing Institutions: Bricolage and the Social Embeddedness of Natural Resource Management. *The European Journal of Development Research*, 14(2):11–30.
- Cole, D. H., Epstein, G., and McGinnis, M. D. (2014). Toward a New Institutional Analysis of Social-Ecological Systems (NIASES): Combining Elinor Ostrom's IAD and SES Frameworks. *Indiana Legal Studies Research Paper*, 299.
- Concha, J. A. and Schott, J. R. (2016). Retrieval of color producing agents in Case 2 waters using Landsat 8. *Remote Sensing of Environment*, 185:95–107.
- Cook, C. and Bakker, K. (2012). Water security: Debating an emerging paradigm. *Global Environmental Change*, 22(1):94–102.
- Costanza, R., de Groot, R., Braat, L., Kubiszewski, I., Fioramonti, L., Sutton, P., Farber, S., and Grasso, M. (2017). Twenty years of ecosystem services: How far have we come and how far do we still need to go? *Ecosystem Services*, 28:1–16.
- Cranmer, S. J., Leifeld, P., McClurg, S. D., and Rolfe, M. (2017). Navigating the Range of Statistical Tools for Inferential Network Analysis. *American Journal of Political Science*, 61(1):237–251.
- Dadson, S., Hall, J. W., Garrick, D., Sadoff, C., Grey, D., and Whittington, D. (2017). Water security, risk, and economic growth: Insights from a dynamical systems model. *Water Resources Research*, 53(8):6425–6438.
- Dhu, T., Dunn, B., Lewis, B., Lymburner, L., Mueller, N., Telfer, E., Lewis, A., McIntyre, A., Minchin, S., and Phillips, C. (2017). Digital earth Australia – unlocking new value from earth observation data. *Big Earth Data*, 1(1-2):64–74.
- Epstein, G., Pittman, J., Alexander, S. M., Berdej, S., Dyck, T., Kreitmair, U., Rathwell, K. J., Villamayor-Tomas, S., Vogt, J., and Armitage, D. (2015). Institutional fit and the sustainability of social-ecological systems. *Current Opinion in Environmental Sustainability*, 14:34–40.
- Epstein, G., Vogt, J. M., Mincey, S. K., Cox, M., and Fischer, B. (2013). Missing ecology: integrating ecological perspectives with the social-ecological system framework. *International Journal of the Commons*, 7(2):432–453.
- ESA (2017). Sentinel Data Access Report 2016. Technical report, European Space Agency.
- Fath, B., Dean, C., and Katzmaier, H. (2015). Navigating the adaptive cycle: an approach to managing the resilience of social systems. *Ecology and Society*, 20(2).
- Flörke, M., Schneider, C., and McDonald, R. I. (2018). Water competition between cities and agriculture driven by climate change and urban growth. *Nature Sustainability*, 1(1):51–58.
- Folke, C., Hahn, T., Olsson, P., and Norberg, J. (2005). Adaptive Governance of Social-Ecological Systems. *Annual Review of Environment and Resources*, 30(1):441–473.
- Gain, A. K., Giupponi, C., and Wada, Y. (2016). Measuring global water security towards sustainable development goals. *Environmental Research Letters*, 11(12):124015.

- Galaz, V., Crona, B., Österblom, H., Olsson, P., and Folke, C. (2012). Polycentric systems and interacting planetary boundaries — Emerging governance of climate change–ocean acidification–marine biodiversity. *Ecological Economics*, 81:21–32.
- Gerber, J.-D., Knoepfel, P., Nahrath, S., and Varone, F. (2009). Institutional Resource Regimes: Towards sustainability through the combination of property-rights theory and policy analysis. *Ecological Economics*, 68(3):798–809.
- Gerlak, A. K., House-Peters, L., Varady, R. G., Albrecht, T., Zúñiga-Terán, A., de Grenade, R. R., Cook, C., and Scott, C. A. (2018). Water security: A review of place-based research. *Environmental Science & Policy*, 82:79–89.
- Gerlak, A. K. and Mukhtarov, F. (2015). ‘Ways of knowing’ water: integrated water resources management and water security as complementary discourses. *International Environmental Agreements: Politics, Law and Economics*, 15(3):257–272.
- Giuliani, G., Chatenoux, B., Bono, A. D., Rodila, D., Richard, J.-P., Allenbach, K., Dao, H., and Peduzzi, P. (2017a). Building an Earth Observations Data Cube: lessons learned from the Swiss Data Cube (SDC) on generating Analysis Ready Data (ARD). *Big Earth Data*, 1(1-2):100–117.
- Giuliani, G., Dao, H., De Bono, A., Chatenoux, B., Allenbach, K., De Laborie, P., Rodila, D., Alexandris, N., and Peduzzi, P. (2017b). Live Monitoring of Earth Surface (LiMES): A framework for monitoring environmental changes from Earth Observations. *Remote Sensing of Environment*, 202:222–233.
- Giuliani, G. and Peduzzi, P. (2011). The PREVIEW Global Risk Data Platform: a geoportal to serve and share global data on risk to natural hazards. *Natural Hazards and Earth System Sciences*, 11(1):53–66.
- Gorelick, N., Hancher, M., Dixon, M., Ilyushchenko, S., Thau, D., and Moore, R. (2017). Google Earth Engine: Planetary-scale geospatial analysis for everyone. *Remote Sensing of Environment*, 202:18–27.
- Gunderson, L. H. and Holling, C. S. (2002). *Panarchy Understanding transformations in human and natural systems*. Island Press, Washington.
- Heikkila, T. and Gerlak, A. K. (2013). Building a Conceptual Approach to Collective Learning: Lessons for Public Policy Scholars. *Policy Studies Journal*, 41(3):484–512.
- Heikkila, T. and Gerlak, A. K. (2018). Working on learning: how the institutional rules of environmental governance matter. *Journal of Environmental Planning and Management*, 0(0):1–18.
- Heikkila, T., Villamayor-Tomas, S., and Garrick, D. (2018). Special Issue: Bringing polycentric systems into focus for environmental governance. *Environmental Policy and Governance*, 28(4):207–318.
- Heikkila, T. and Weible, C. M. (2018). A semiautomated approach to analyzing polycentricity. *Environmental Policy and Governance*, 28(4):308–318.
- Holling, C. S. (1973). Resilience and Stability of Ecological Systems. *Annual Review of Ecology and Systematics*, 4(1):1–23.
- Holling, C. S. (1996). Engineering resilience versus ecological resilience. In *Engineering within ecological constraints*, pages 31–44. The National Academies Press, Washington, DC.

- Huai, C. and Chai, L. (2016). A bibliometric analysis on the performance and underlying dynamic patterns of water security research. *Scientometrics*, 108(3):1531–1551.
- Ingold, K., Moser, A., Metz, F., Herzog, L., Bader, H.-P., Scheidegger, R., and Stamm, C. (2018). Misfit between physical affectedness and regulatory embeddedness: The case of drinking water supply along the Rhine River. *Global Environmental Change*, 48:136–150.
- Janssen, M. A., Anderies, J. M., and Ostrom, E. (2007). Robustness of Social-Ecological Systems to Spatial and Temporal Variability. *Society & Natural Resources*, 20(4):307–322.
- Killough, B. (2018). Open Data Cubes, A Big Data Solution for Global Capacity Building.
- Lawford, R., Strauch, A., Toll, D., Fekete, B., and Cripe, D. (2013). Earth observations for global water security. *Current Opinion in Environmental Sustainability*, 5(6):633–643.
- Lehmann, A., Chaplin-Kramer, R., Lacayo, M., Giuliani, G., Thau, D., Koy, K., Goldberg, G., and Jr., R. S. (2017). Lifting the Information Barriers to Address Sustainability Challenges with Data from Physical Geography and Earth Observation. *Sustainability*, 9(5):858.
- Lehmann, A., Giuliani, G., Ray, N., Rahman, K., Abbaspour, K. C., Nativi, S., Craglia, M., Cripe, D., Quevauviller, P., and Beniston, M. (2014). Reviewing innovative Earth observation solutions for filling science-policy gaps in hydrology. *Journal of Hydrology*, 518:267–277.
- Leifeld, P. (2013). Reconceptualizing Major Policy Change in the Advocacy Coalition Framework: A Discourse Network Analysis of German Pension Politics. *Policy Studies Journal*, 41(1):169–198.
- Lewis, A., Lymburner, L., Purss, M. B. J., Brooke, B., Evans, B., Ip, A., Dekker, A. G., Irons, J. R., Minchin, S., Mueller, N., Oliver, S., Roberts, D., Ryan, B., Thankappan, M., Woodcock, R., and Wyborn, L. (2016). Rapid, high-resolution detection of environmental change over continental scales from satellite data – the Earth Observation Data Cube. *International Journal of Digital Earth*, 9(1):106–111.
- Lewis, A., Oliver, S., Lymburner, L., Evans, B., Wyborn, L., Mueller, N., Raevksi, G., Hooke, J., Woodcock, R., Sixsmith, J., Wu, W., Tan, P., Li, F., Killough, B., Minchin, S., Roberts, D., Ayers, D., Bala, B., Dwyer, J., Dekker, A., Dhu, T., Hicks, A., Ip, A., Purss, M., Richards, C., Sagar, S., Trenham, C., Wang, P., and Wang, L.-W. (2017). The Australian Geoscience Data Cube — Foundations and lessons learned. *Remote Sensing of Environment*, 202:276–292.
- Lubell, M., Robins, G., and Wang, P. (2014). Network structure and institutional complexity in an ecology of water management games. *Ecology and Society*, 19(4).
- Maciel, A. M., Camara, G., Vinhas, L., Picoli, M. C. A., Begotti, R. A., and Assis, L. F. F. G. d. (2018). A spatiotemporal calculus for reasoning about land-use trajectories. *International Journal of Geographical Information Science*, 0(0):1–17.
- Malenovský, Z., Rott, H., Cihlar, J., Schaepman, M. E., García-Santos, G., Fernandes, R., and Berger, M. (2012). Sentinels for science: Potential of Sentinel-1, -2, and -3 missions for scientific observations of ocean, cryosphere, and land. *Remote Sensing of Environment*, 120:91–101.
- McCord, P., Dell'Angelo, J., Baldwin, E., and Evans, T. (2017). Polycentric Transformation in Kenyan Water Governance: A Dynamic Analysis of Institutional and Social-Ecological Change. *Policy Studies Journal*, 45(4):633–658.

- McGinnis, M. D. and Ostrom, E. (2014). Social-ecological system framework: initial changes and continuing challenges. *Ecology and Society*, 19(2).
- Miller, F., Osbahr, H., Boyd, E., Thomalla, F., Bharwani, S., Ziervogel, G., Walker, B., Birkmann, J., van der Leeuw, S., Rockström, J., Hinkel, J., Downing, T., Folke, C., and Nelson, D. (2010). Resilience and Vulnerability: Complementary or Conflicting Concepts? *Ecology and Society*, 15(3).
- Newig, J., Kochskämper, E., Challies, E., and Jager, N. W. (2016). Exploring governance learning: How policymakers draw on evidence, experience and intuition in designing participatory flood risk planning. *Environmental Science & Policy*, 55:353–360.
- Ostrom, E. (2005). *Understanding Institutional Diversity*. Princeton University Press, Princeton.
- Ostrom, E. (2009). A General Framework for Analyzing Sustainability of Social-Ecological Systems. *Science*, 325(5939):419–422.
- Ostrom, E. and Basurto, X. (2011). Crafting analytical tools to study institutional change. *Journal of Institutional Economics*, 7(3):317–343.
- Ostrom, E. and Janssen, M. A. (2005). Multi-Level Governance and Resilience of Social-Ecological Systems. In Spoor, M., editor, *Globalisation, Poverty and Conflict: A Critical “Development” Reader*, pages 239–259. Springer Netherlands, Dordrecht.
- Ostrom, E., Janssen, M. A., and Anderies, J. M. (2007). Going beyond panaceas. *Proceedings of the National Academy of Sciences*, 104(39):15176–15178.
- Pahl-Wostl, C. (2009). A conceptual framework for analysing adaptive capacity and multi-level learning processes in resource governance regimes. *Global Environmental Change*, 19(3):354–365.
- Pahl-Wostl, C. and Knieper, C. (2014). The capacity of water governance to deal with the climate change adaptation challenge: Using fuzzy set Qualitative Comparative Analysis to distinguish between polycentric, fragmented and centralized regimes. *Global Environmental Change*, 29:139–154.
- Pasquarella, V. J., Holden, C. E., Kaufman, L., and Woodcock, C. E. (2016). From imagery to ecology: leveraging time series of all available Landsat observations to map and monitor ecosystem state and dynamics. *Remote Sensing in Ecology and Conservation*, 2(3):152–170.
- Peduzzi, P. (2017). Flooding: Prioritizing protection? *Nature Climate Change*, 7(9):625–626.
- Pimm, S. L. (1984). The complexity and stability of ecosystems. *Nature*, 307(5949):321–326.
- Poteete, A. R., Janssen, M. A., and Ostrom, E. (2010). *Working together: collective action, the commons, and multiple methods in practice*. Princeton University Press.
- Purss, M. B. J., Lewis, A., Oliver, S., Ip, A., Sixsmith, J., Evans, B., Edberg, R., Frankish, G., Hurst, L., and Chan, T. (2015). Unlocking the Australian Landsat Archive – From dark data to High Performance Data infrastructures. *GeoResJ*, 6:135–140.
- Ratajczyk, E., Brady, U., Baggio, J., Barnett, A., Perez-Ibarra, I., Rollins, N., Rubiños, C., Shin, H., Yu, D., Aggarwal, R., Anderies, J., and Janssen, M. (2016). Challenges and opportunities in coding the commons: problems, procedures, and potential solutions in large-N comparative case studies. *International Journal of the Commons*, 10(2).

- Renou, Y. and Bolognesi, T. (2018). Governing urban water services in Europe: Towards sustainable synchronous regimes. *Journal of Hydrology*.
- Robinson, D. T., Vittorio, A. D., Alexander, P., Arneth, A., Barton, C. M., Brown, D. G., Kettner, A., Lemmen, C., O'Neill, B. C., Janssen, M., Pugh, T. A. M., Rabin, S. S., Rounsevell, M., Syvitski, J. P., Ullah, I., and Verburg, P. H. (2018). Modelling feedbacks between human and natural processes in the land system. *Earth System Dynamics*, 9(2):895–914.
- Sarasvathy, S. D. (2009). *Effectuation: Elements of entrepreneurial expertise*. Edward Elgar Publishing.
- Schlager, E. and Cox, M. (2018). The IAD Framework and the SES Framework: An Introduction and Assessment of the Ostrom Workshop Frameworks. In *Theories of the Policy Process*, pages 215–252. Westview Press, New York.
- Scott, G. and Rajabifard, A. (2017). Sustainable development and geospatial information: a strategic framework for integrating a global policy agenda into national geospatial capabilities. *Geo-spatial Information Science*, 20(2):59–76.
- Silveira, A. R. d. and Richards, K. S. (2013). The Link Between Polycentrism and Adaptive Capacity in River Basin Governance Systems: Insights from the River Rhine and the Zhujiang (Pearl River) Basin. *Annals of the Association of American Geographers*, 103(2):319–329.
- Stedman, R. C. (2016). Subjectivity and social-ecological systems: a rigidity trap (and sense of place as a way out). *Sustainability Science*, 11(6):891–901.
- Teisman, G. R. and Edelenbos, J. (2011). Towards a perspective of system synchronization in water governance: a synthesis of empirical lessons and complexity theories. *International Review of Administrative Sciences*, 77(1):101–118.
- Tulbure, M. G., Broich, M., Stehman, S. V., and Kommareddy, A. (2016). Surface water extent dynamics from three decades of seasonally continuous Landsat time series at subcontinental scale in a semi-arid region. *Remote Sensing of Environment*, 178:142–157.
- Varone, F. and Nahrath, S. (2014). Regulating the use of natural resources: When policy instruments meet property rights. In *L'instrumentation de l'action publique. Controverses, resistances, effets*, pages 237–264. Presses de Sciences Po, Paris.
- Vatn, A. (2005). *Institutions and the Environment*. Edward Elgar Publishing, Cheltenham.
- Vidal-Legaz, B., Martínez-Fernández, J., Picón, A. S., and Pugnaire, F. I. (2013). Trade-offs between maintenance of ecosystem services and socio-economic development in rural mountainous communities in southern Spain: A dynamic simulation approach. *Journal of Environmental Management*, 131:280–297.
- Vogt, J. M., Epstein, G. B., Mincey, S. K., Fischer, B. C., and McCord, P. (2015). Putting the "E" in SES: unpacking the ecology in the Ostrom social-ecological system framework. *Ecology and Society*, 20(1).
- Vörösmarty, C. J., McIntyre, P. B., Gessner, M. O., Dudgeon, D., Prusevich, A., Green, P., Glidden, S., Bunn, S. E., Sullivan, C. A., Liermann, C. R., and Davies, P. M. (2010). Global threats to human water security and river biodiversity. *Nature*, 467(7315):555–561.

- Wichelns, D. (2017). The water-energy-food nexus: Is the increasing attention warranted, from either a research or policy perspective? *Environmental Science & Policy*, 69:113–123.
- Wulder, M. A., Masek, J. G., Cohen, W. B., Loveland, T. R., and Woodcock, C. E. (2012). Opening the archive: How free data has enabled the science and monitoring promise of Landsat. *Remote Sensing of Environment*, 122:2–10.
- Young, O. R. (2010). Institutional dynamics: Resilience, vulnerability and adaptation in environmental and resource regimes. *Global Environmental Change*, 20(3):378–385.