

# SUPPORTING MATERIALS

## **Site-Specific Labeling Of Proteins With Near-IR Dyes**

Chen-Ming Lin <sup>1</sup>, Syed Muhammad Usama <sup>1</sup> and Kevin Burgess <sup>1,\*</sup>

Department of Chemistry, Texas A & M University, Box 30012, College Station,  
TX 77842, USA

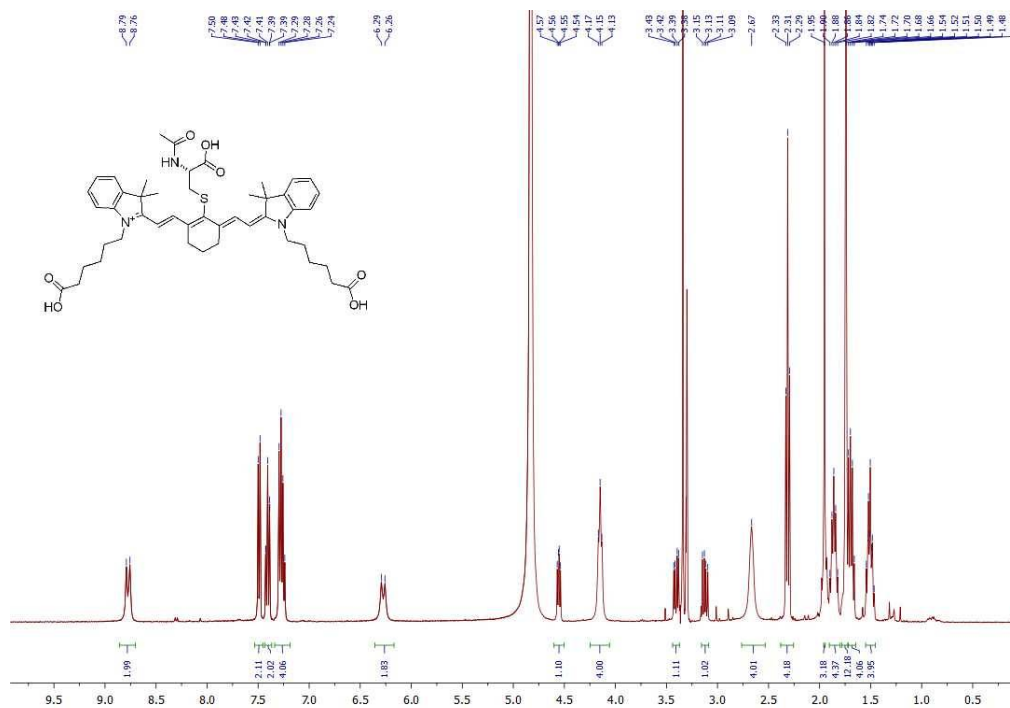
E-mail: [burgess@tamu.edu](mailto:burgess@tamu.edu)

## Table of Contents

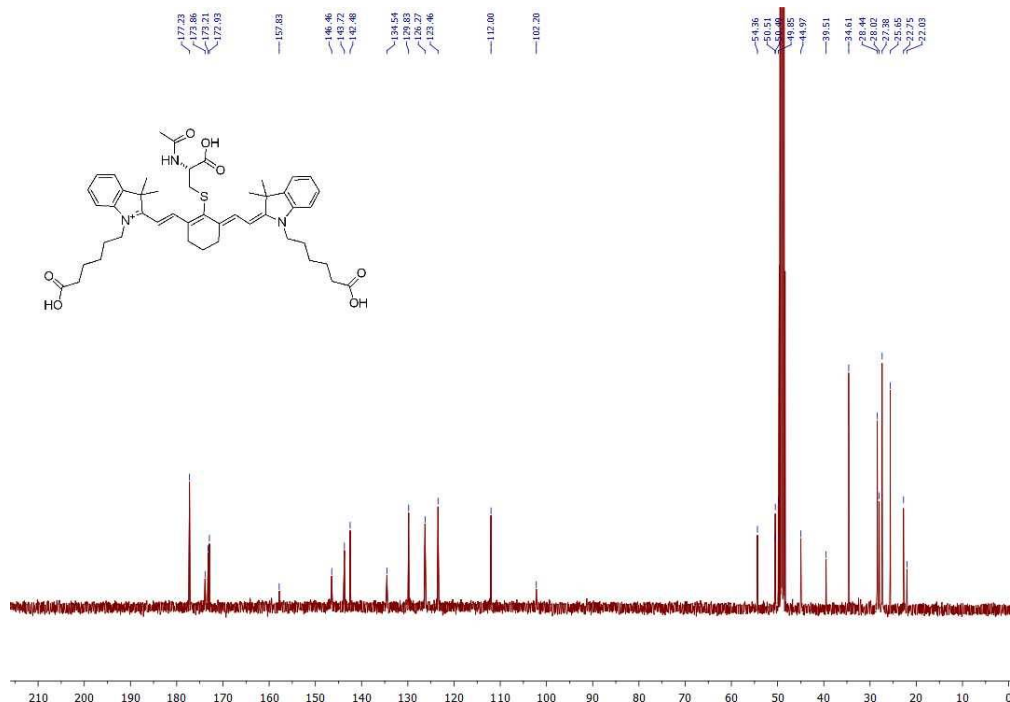
<b>A. Characterization Spectra Of Compound 1a</b> .....	<b>3</b>
<sup>1</sup> H NMR.....	3
<sup>13</sup> C NMR.....	3
HRMS.....	4
<b>B. Characterization Spectra Of Compound 1b</b> .....	<b>5</b>
<sup>1</sup> H NMR.....	5
<sup>13</sup> C NMR.....	5
HRMS.....	6
<b>C. Characterization Spectra Of Compound 1c</b> .....	<b>7</b>
<sup>1</sup> H NMR.....	7
<sup>13</sup> C NMR.....	7
HRMS.....	8
<b>D. Characterization Spectra Of Compound 1d</b> .....	<b>9</b>
<sup>1</sup> H NMR.....	9
<sup>13</sup> C NMR.....	9
HRMS.....	10
<b>E. Coomassie Blue Staining Of Diverse Proteins Gel</b> .....	<b>11</b>

## A. Characterization Spectra Of Compound 1a

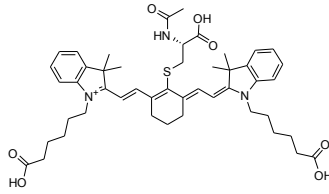
### <sup>1</sup>H NMR



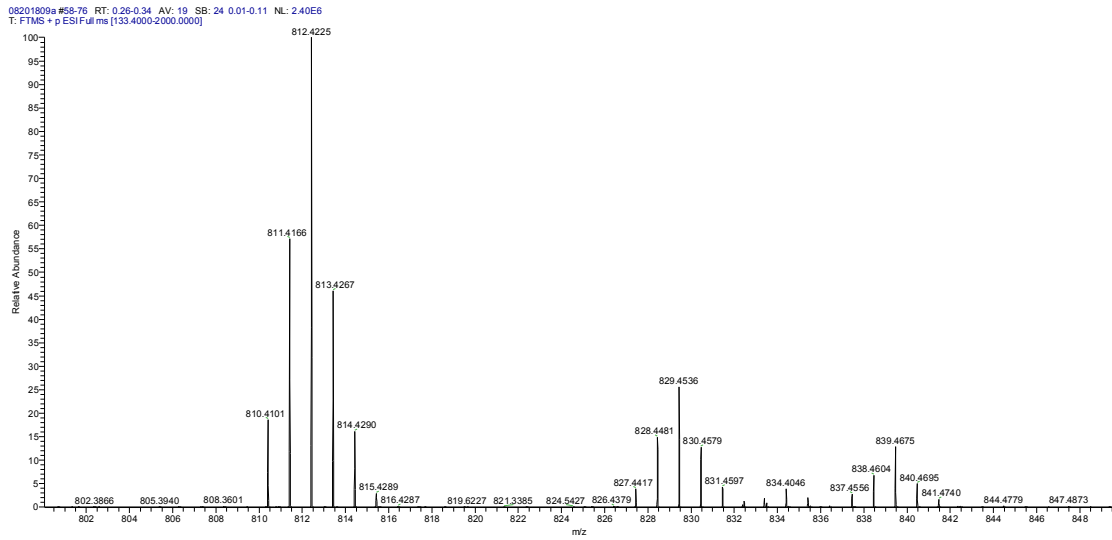
### <sup>13</sup>C NMR



# HRMS

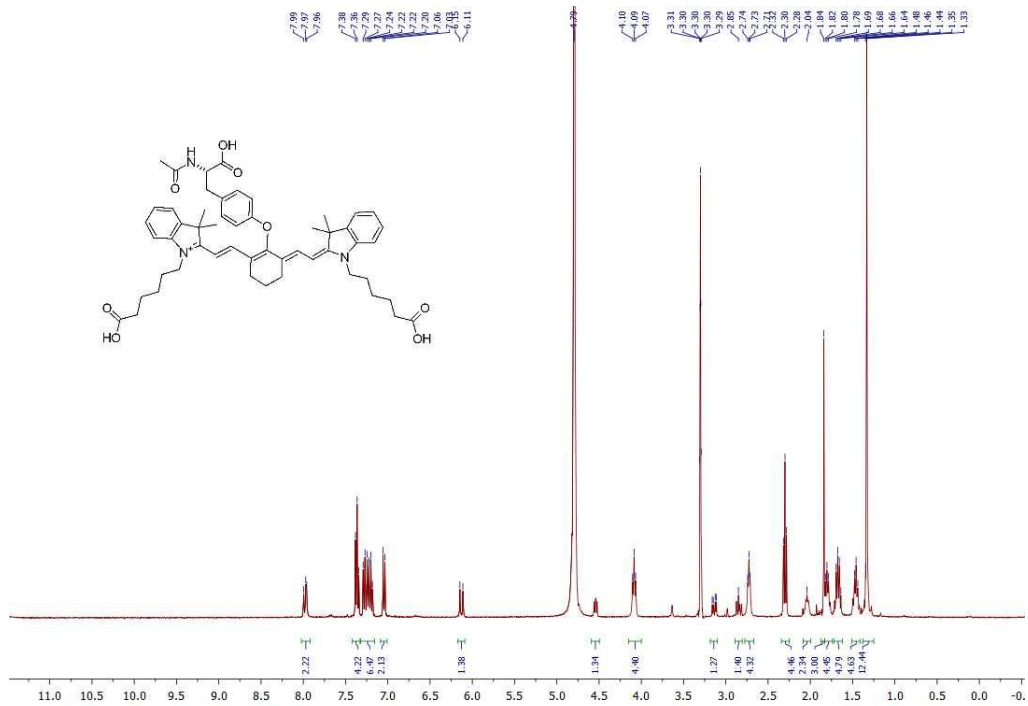


Chemical Formula:  $C_{47}H_{60}N_3O_7S^+$   
Exact Mass: 810.4146

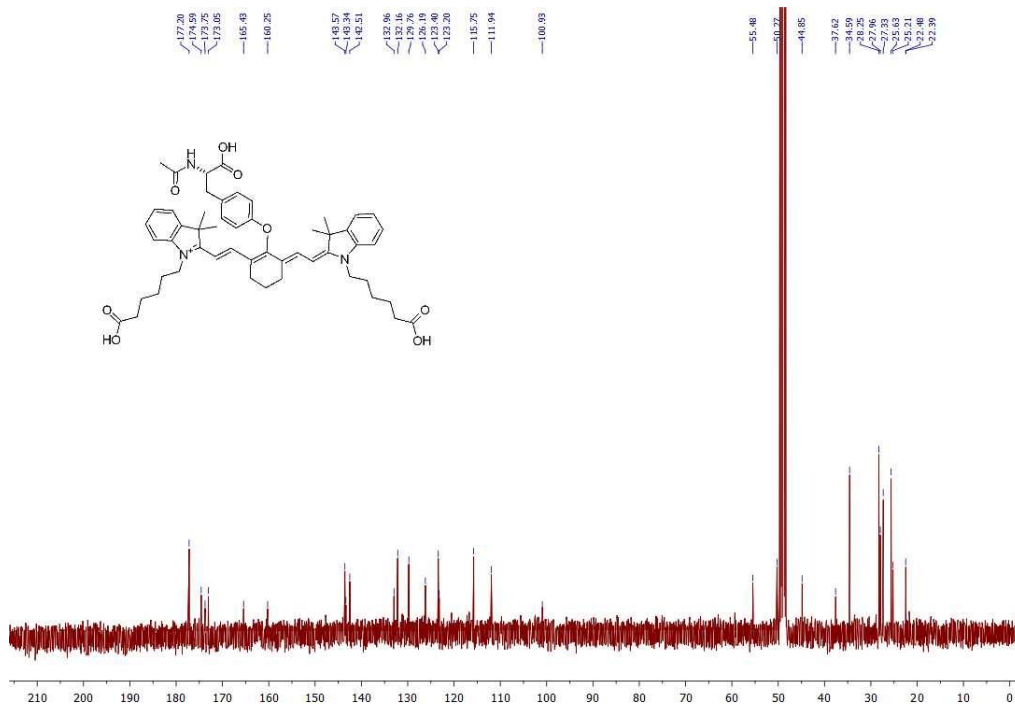


## B. Characterization Spectra Of Compound 1b

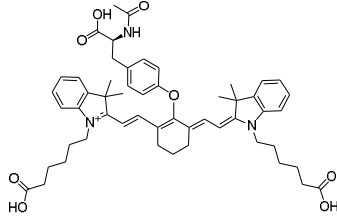
### <sup>1</sup>H NMR



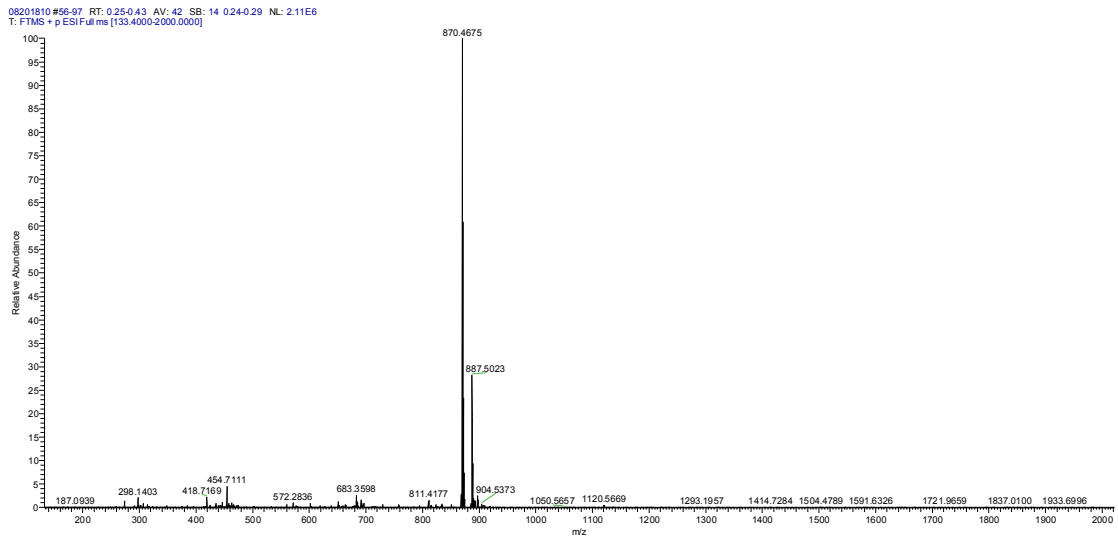
### <sup>13</sup>C NMR



## HRMS

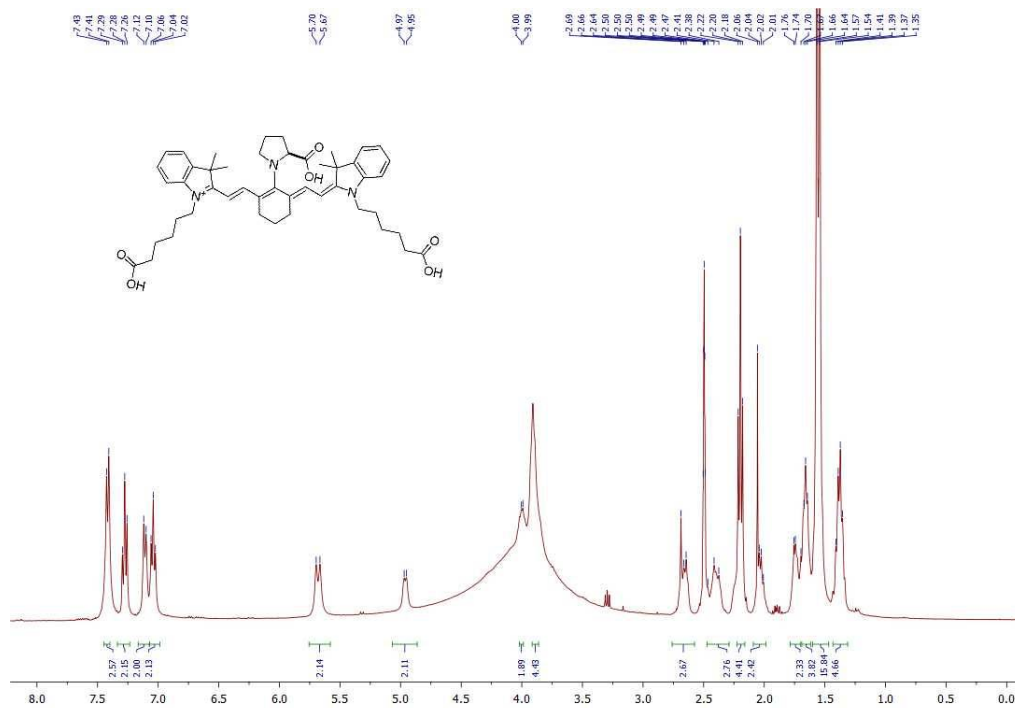


Chemical Formula:  $C_{53}H_{64}N_3O_8^+$   
Exact Mass: 870.4688

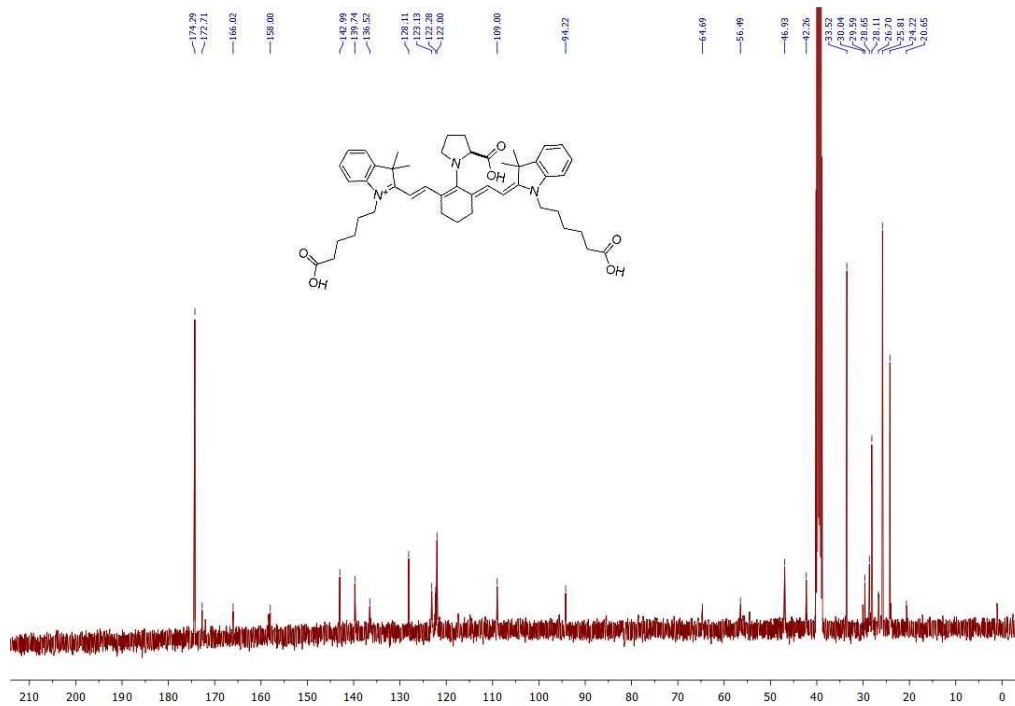


## C. Characterization Spectra Of Compound 1c

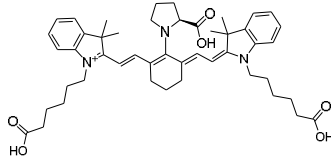
### <sup>1</sup>H NMR



### <sup>13</sup>C NMR

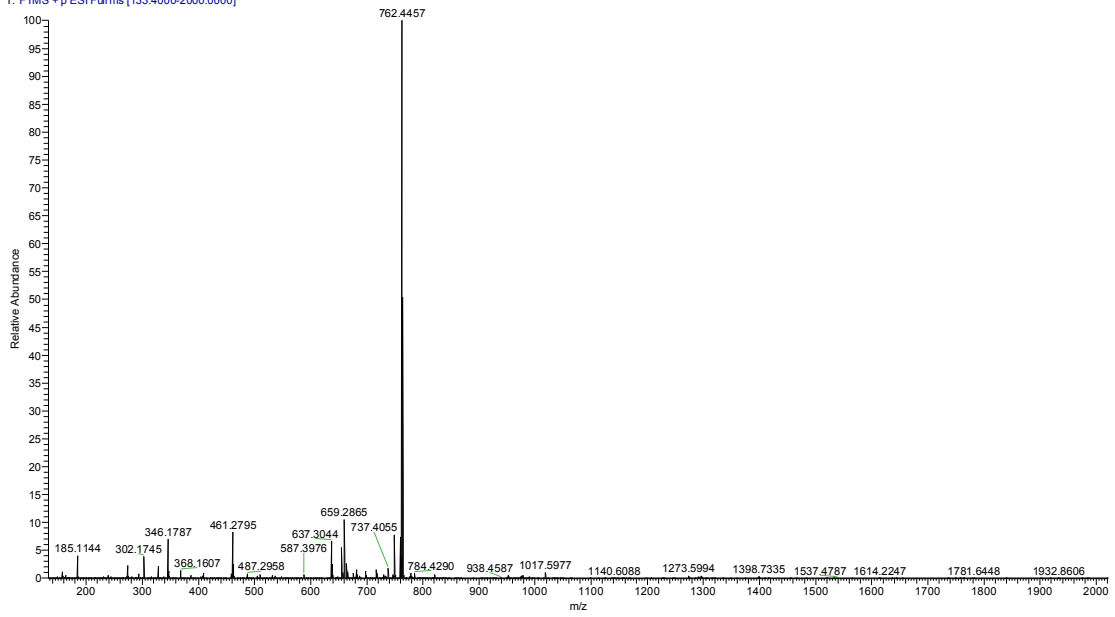


## HRMS



Chemical Formula:  $C_{47}H_{60}N_3O_6^+$   
Exact Mass: 762.4477

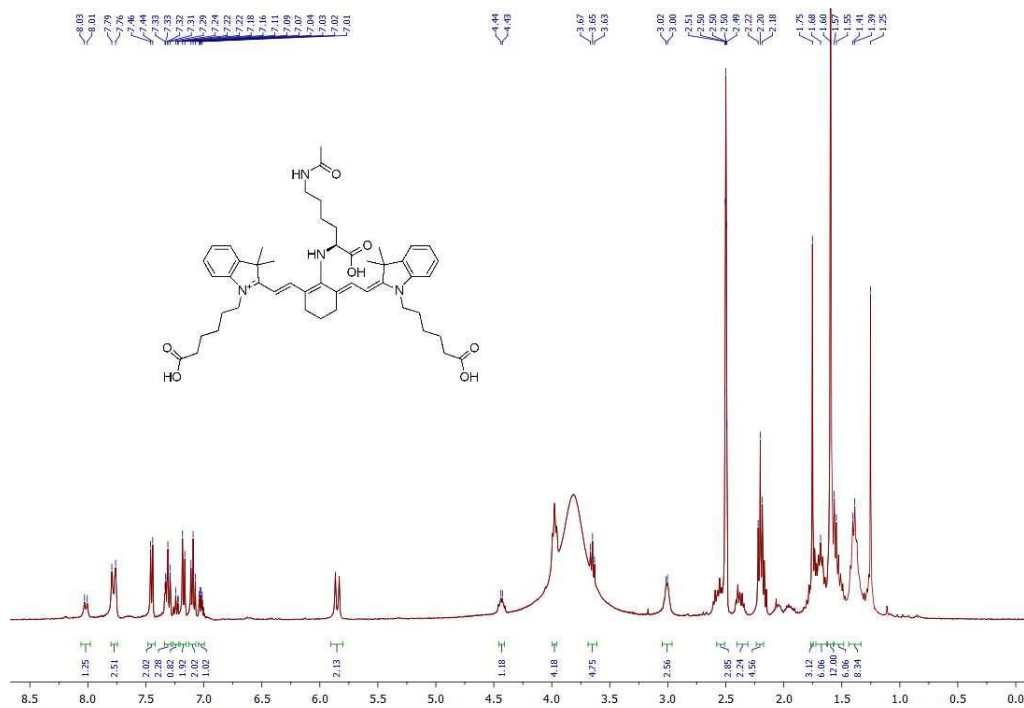
09121807 #420-485 RT: 0.53-0.62 AV: 66 SB: 224 0.01-0.29 NL: 2.12E7  
T: FTMS + p ESI Full ms [133.4000-2000.0000]



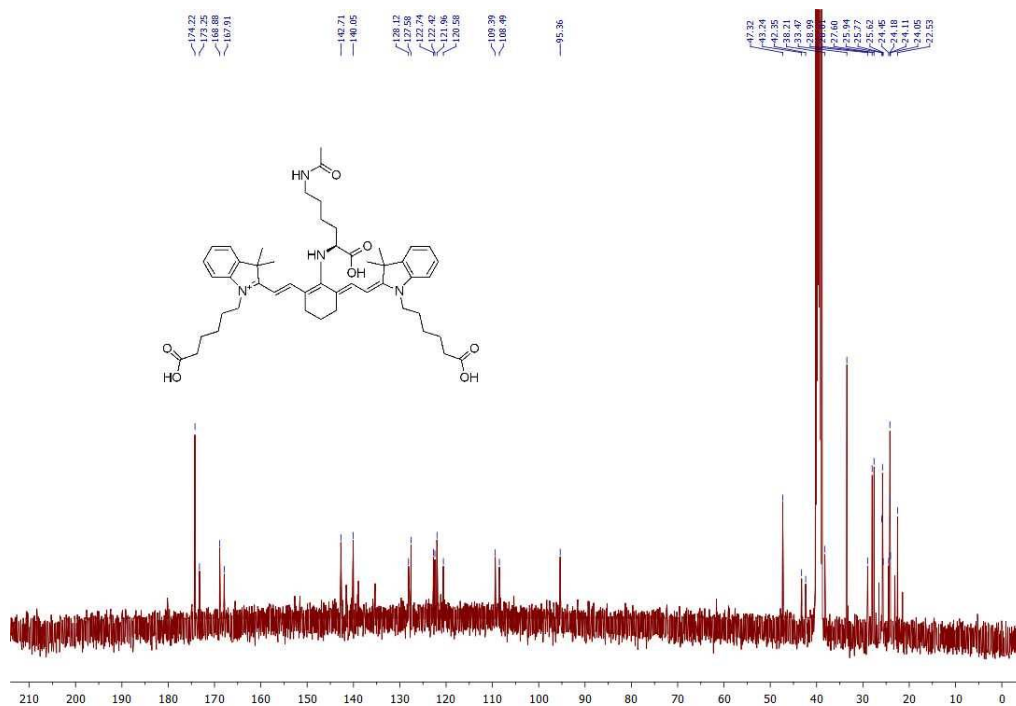


## D. Characterization Spectra Of Compound 1d

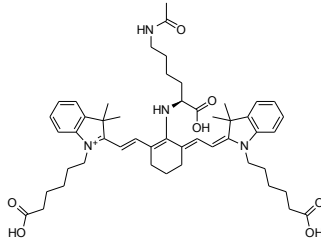
### <sup>1</sup>H NMR



### <sup>13</sup>C NMR

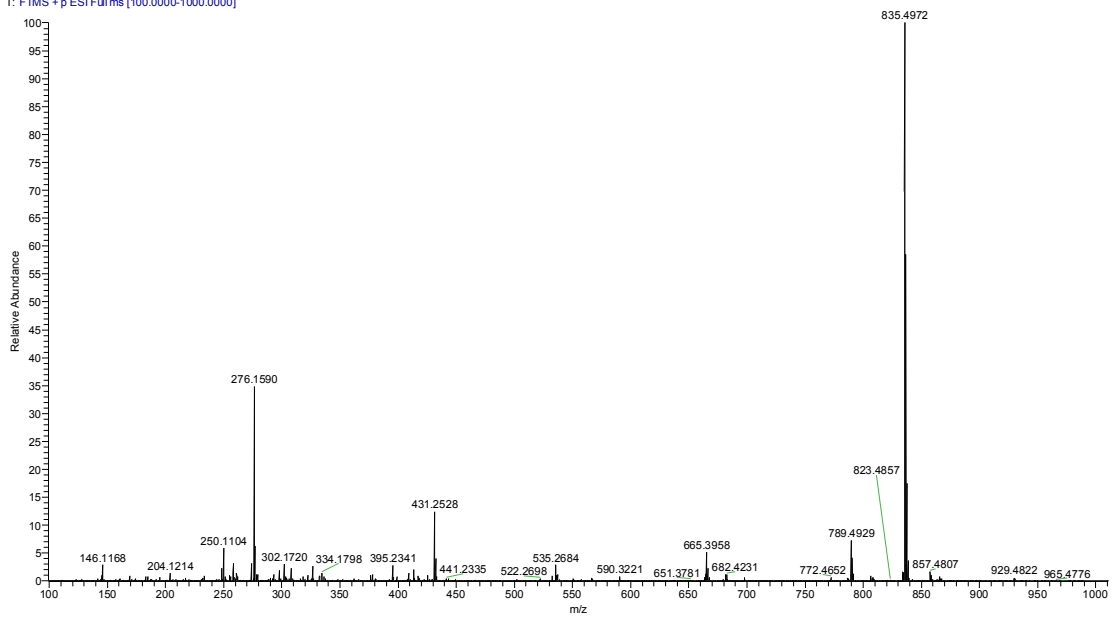


# HRMS



Chemical Formula:  $C_{50}H_{67}N_4O_7^+$   
Exact Mass: 835.5004

09171808a #1593-1817 RT: 2.01-2.30 AV: 225 SB: 394 0.02-0.52 NL: 5.40E7  
T: FTMS + p ESI Fullms [100.0000-1000.0000]



## E. Coomassie Blue Staining Of Diverse Proteins Gel

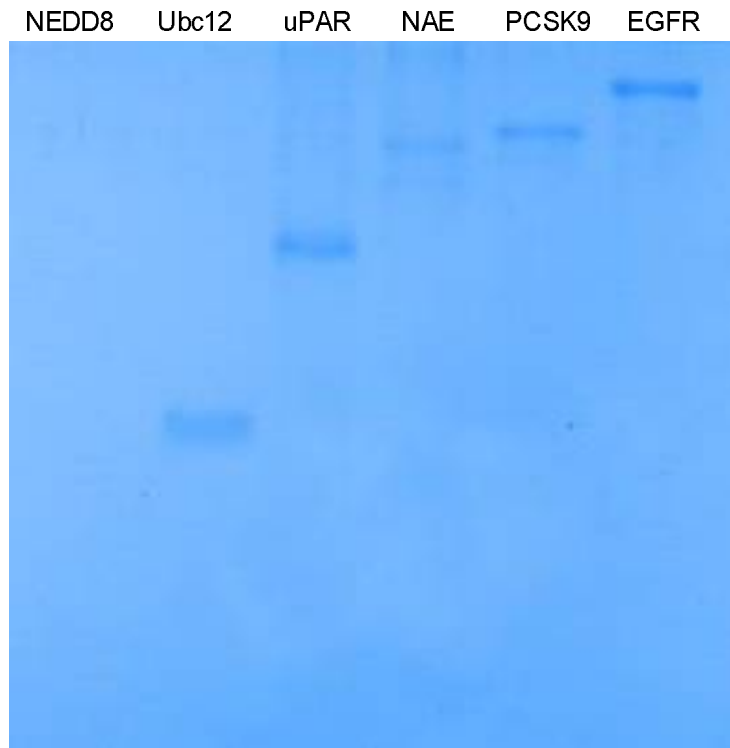


Figure S1. CBB-G250 staining of SDS-PAGE gel referred to Figure 6.