

Back to the future? The fallopian tube, precursor escape and a dualistic model of high-grade serous
carcinogenesis

Thing R. Soong, MD, PhD, MPH ¹

David L. Kolin, MD, PhD ²

Nathan J. Teschan, DO ²

Christopher P Crum, MD ²

¹Department of Pathology, University of Washington Medical Center, Seattle, WA

²Department of Pathology, Division of Women's and Perinatal Pathology, Brigham and Women's
Hospital, Boston, MA 02115

Address correspondence to Christopher P Crum, MD, Department of Pathology, Brigham and Women's
Hospital, 75 Francis Street, Boston MA 02115

Tel: 617-732-5481

FAX: 617-264-5125

Email: ccrum@bwh.harvard.edu

Abstract

Beginning with the discovery of the BRCA ovarian cancer susceptibility genes and subsequent detailed examination of risk reduction salpingo-oophorectomy (RRSO) specimens, a new paradigm of ovarian carcinogenesis has unfolded with attention to the distal fallopian tube. The primary focus has been an early cancer in the fallopian tube which is seen in virtually all incidentally discovered high-grade serous cancers in asymptomatic women. This high-frequency of tubal involvement in early serous cancer - serous tubal intraepithelial carcinoma or STIC - has galvanized attention to this organ as a primary source of this disease. However, an enduring mystery has been the relatively low frequency of STIC in fallopian tubes of women with advanced malignancy. This paradox, a high-frequency of tubal involvement early and a low-frequency late in the disease process has spurred interest in other potential sources, such as the ovarian surface or secondary Mullerian system. However, because essentially all high-grade serous carcinomas are linked by TP53 mutations, and because fallopian tubes frequently contain early serous proliferations (ESPs) with these mutations, attention has turned to the possibility that nonmalignant but TP53 mutated tubal epithelium could be responsible for an eventual malignancy. Recent data have shown evidence of lineage continuity between ESPs and concurrent serous carcinomas prompting the concept of "precursor escape". This creates a 2nd component of the paradigm by which cells from early lesions can escape the fallopian tube and undergo future malignant transformation later, emerging suddenly as widespread malignancy. This dualistic model thus explains the paradox and opens new questions pertaining to the challenge of both early detection and prevention of this lethal malignancy.

The past

Ovarian cancer has been one of the most unique and perplexing diseases to diagnose and treat over the past 50 years. This is largely due to the inability of investigators to pinpoint its origins as well as the

difficulty in detecting the tumor at a curable stage, combined with eventual resistance to chemotherapy.

¹ Unlike endometrial and cervical malignancies, which are preceded by recognizable precursor lesions, the majority of ovarian carcinomas – high-grade serous carcinomas (HGSC) – have been assigned to the ovary by default. Systems for estimating origin have been primarily dependent upon location of tumor rather than identification of a specific carcinogenic sequence.² Because most of these carcinomas do involve the ovarian surface, an origin in the ovarian surface epithelium was presumed.² For those tumors that did not involve the ovarian surface or demonstrated scant evidence of ovarian involvement a source in the peritoneal cavity was presumed. These so-called "primary peritoneal carcinomas" were generally assumed to arise within epithelial rests such as endosalpingiosis, endometriosis or other components of the "secondary Mullerian system".²

The paradigm shift

Several unrelated but temporally linked observations facilitated the emergence of a potential new source for HGSC. The first was the discovery of the BRCA cancer susceptibility genes.³ The ability to identify patients at risk by testing for germline BRCA1 and BRCA2 mutations accelerated the adoptions of risk reduction salpingo-oophorectomy. This in turn increased the likelihood that early cancers would be discovered in the ovary or fallopian tubes. A second was a concurrent study that underscored the rarity of early HGSC of the ovary.⁴ A third was the progressive realization that serologic screening or ultrasound demonstrated very little efficacy in detecting these particular tumors at a curable stage.⁵

The most compelling evidence moving the origin of this tumor away from the ovary and to the fallopian tube began around 2000 when investigators reported early serous carcinomas in the fallopian tubes of women with germline BRCA1 or BRCA2 mutations.⁶ This was followed by a series of confirmatory reports identifying either serous cancers or epithelial abnormalities containing TP53 mutations in the tube.⁷⁸ Subsequently the SEE-FIM dissection protocol was adopted, which focused on the distal

fallopian tube, where the majority of early malignancies were being found.⁹ This was followed by studies of earlier precursor lesions in the fallopian tube ranging from small stretches of epithelium with TP53 mutations and proliferations termed serous tubal intraepithelial lesions.^{7 10 11} Based on these observations a serous carcinogenic sequence was assembled in the distal tube which began with a p53 signature and terminated in STIC, with serous tubal intraepithelial lesions signifying a transition.

Application of the SEE-FIM protocols to carefully examine the tubes of women at risk for HGSC accelerated the percentage of early cancers attributed to the distal tube, approaching 100% in some studies.¹² The tubal theory of high-grade serous carcinogenesis was thus superimposed upon the prior literature and like most new models began as a simple paradigm in which precursor to cancer evolution occurred in the tube, followed by dissemination to the peritoneal surfaces.¹³ This explained the rather rapid emergence of a malignancy which began as an occult carcinoma in the fallopian tube and then rapidly became advanced once the tumor is disseminated to the peritoneum.

Unanswered questions

The above serous carcinogenic sequence, one that required transition from precursor to cancer in the fallopian tube, led investigators to multiple conclusions. The first was the assumption that most or all of these malignancies began in the fallopian tube. Encouraging this were observations that up to 75% or more of HGSC involved the fallopian tube in some manner.¹⁴ This has led to consensus statements concluding - based on physical evidence - that with appreciable tubal involvement one should assume that the fallopian tube was the origin of the malignancy.¹⁵ If a serous tubal intraepithelial carcinoma could not be detected it was often attributed to the fact that the early cancer was obscured by the overwhelming burden of disease and the fallopian tube.¹⁵ Again, this approach was based upon a single assumption which was that malignancy developed in the tube and then spread. Concurrent with these assumptions was a recommendation from the clinical perspective that opportunistic salpingectomy

should be practice whenever possible to reduce the risk of eventual HGSC.¹⁶ Salpingectomy was also proposed for managing women with BRCA mutations although this is currently under study with careful guidelines to ensure that patients are aware of potential risks if the ovary is left behind.¹⁷

A second and entirely different viewpoint coming from this work was informed by critical pathologic observation. Based on multiple studies, the frequency of an intramucosal carcinoma in the fallopian tube of the patient with a symptomatic HGSC ranged from as low as 10% to as high as 60%.¹⁸ Either estimate left a large percentage of HGSC in which a clear-cut early malignancy in the fallopian tube could not be identified. Proponents of other potential sources pointed to the ovarian surface epithelium or the secondary Mullerian system.^{19 20 21} These proposals did not exclude the fallopian tube as the ultimate source of the tumor but theorized that benign cells could be transported to the ovaries or peritoneal (second Mullerian system) surface where they would be subsequently transformed, providing additional sites of cancer development that would explain the absence of a serous tubal intraepithelial carcinoma. Even STICs were viewed with suspicion as launch pads for HGSC when examination of cases of symptomatic serous cancer with intraepithelial carcinomas revealed that the intraepithelial carcinomas were sometimes deposits from a widespread cancer.²²

In summary it was clear that a very *high* percentage of *early* serous cancers discovered in asymptomatic women were within the fallopian tube. At the same time a rather *low* percentage of *advanced* cancers were associated with a tubal malignancy. This was the fundamental question requiring a solution to resolve the underpinnings of many HGSCs.

Solutions

The inability to identify early cancers and the fallopian tube in women with HGSCs could be viewed from multiple perspectives. Some authors proposed that carcinomas emerging elsewhere such as in the ovarian surface could do so rapidly and thus bypass an obvious precursor lesion.²⁰ The observation that

many cancers were associated with large cystic masses could be interpreted to mean that the lesions develop within pre-existing cysts such as endosalpingosis or endometriomas. However, there was little direct evidence that - excepting rare instances - HGSCs arose from these benign preexisting conditions. Two studies performing an exhaustive examination of the ovarian cortical inclusion cysts of women with BRCA mutations failed to identify any evidence of a precursor epithelium with a TP53 mutation.^{23 24} Some authors proposed that different morphologic growth patterns might be more likely to be associated with a serous intraepithelial carcinoma.¹⁰ What these studies did show was that the overall frequency of a serous tubal intraepithelial carcinoma in cases of serous cancer cases from women with BRCA mutations individual was low, further emphasizing the likelihood that another pathway must be identified.²⁵ Another piece of information suggesting more than one mechanism of carcinogenesis was the similarity in mean age between women with BRCA mutations who presented with isolated serous tubal intraepithelial carcinoma and symptomatic widespread malignancy.²⁶ Given the assumption that there must be a lag period between the onset of early cancer and later disseminated malignancy, the similarities in age between early and late BRCA-mutation associated HGSC amounted to another mystery and created a model at odds with the traditional precursor cancer model in the uterine cervix.²⁷ Finally, molecular genetic studies of HGSC with and without an associated serous tubal intraepithelial carcinoma failed to show any noticeable difference between the two groups.²⁸ In all of these tumors a TP53 mutation was a requirement and with the exception of the fallopian tube there was no evidence of occult TP53 mutations within endosalpingosis, endometriosis, or the ovary.

Serous cancer precursors in the fallopian tube

As mentioned above, starting around 2000, investigators began to appreciate that early serous cancer precursors could be found within the fallopian tubes. The magnitude of cancer potential from these precursors was not known and still isn't, but it is clear that TP53 mutations are common in the distal fallopian tubes. In one study, 50% of control and 70% of fallopian tubes from women with BRCA

mutations contained at least one small stretch of 12 or more cells containing evidence of a TP53 mutation.²⁹ The small foci - p53 signatures - like their malignant counterparts localized to the distal fallopian tube, occurred in non-ciliated cells, and were associated with evidence of DNA damage in the form of gamma H2AX.³⁰ (A study? Several studies? This study?) This and other studies showed examples where these early lesions can be found in continuity with intraepithelial carcinomas or occasionally malignancies in the fallopian tube.³¹ Given the frequency of these lesions they were presumed to be at very low risk for giving rise to an eventual serous cancer. Proliferative lesions, termed either tubal intraepithelial lesions in transition or serous tubal intraepithelial lesions were much less common and were considered a transition from p53 signature to malignancy.³² For the purposes of this discussion, p53 signatures and serous tubal intraepithelial lesions fall under the category of early serous proliferations or ESPs.³³

Precursor Escape?

Until recently, ESPs were not considered to play a major role in the development of HGSC. Given that they are found in up to 50% of the general population and in view of the low risk of HGSC, the overall risk for an individual with one of these lesions would seem to be very low. Moreover, it is well known that women with BRCA mutations who present with an asymptomatic serous tubal intraepithelial carcinoma carry only an approximately 5% risk of ever developing a metastatic serous cancer.³⁴ Nevertheless the only recognizable precursor lesion to date with a TP53 mutation has been found in the fallopian tube.

In a recent study, Soong et al performed meticulous sectioning of 32 consecutive cases of fallopian tubes from women with HGSC who did not have evidence of an early malignancy in the tubes. NEEDS REFERENCE The purpose of this study was to determine whether early serous proliferations were present and if they were, would they share similar TP53 mutations with the metastatic carcinomas. In this study, 3 of 32 cases revealed an occult malignancy in the tube that had not been previously

appreciated. However, the most striking finding was that in 12 cases, early serous proliferations were identified and in 9 of those 12 cases a TP53 mutation was recovered from the early serous proliferation that was identical to the metastatic serous carcinoma. This study, for the first time, provided evidence of lineage continuity between early serous proliferations and widespread HGSCs in the absence of a recognizable early serous malignancy.³² The conclusion is now that an historically early genetic lesion in the fallopian tube might be ultimately responsible for a seemingly sudden emergence of widespread serous carcinoma.

De-mystifying a paradox

The possibility that some early serous proliferations escape the fallopian tube and ultimately emerge as

a widespread intra-abdominal malignancy is a potential key to unlocking the decades old mystery of disparate and contrasting presentations of HGSC, one with and another without a coexisting serous tubal intraepithelial carcinoma. In the classic scenario, a tubal intraepithelial carcinoma or early cancer develops in the distal

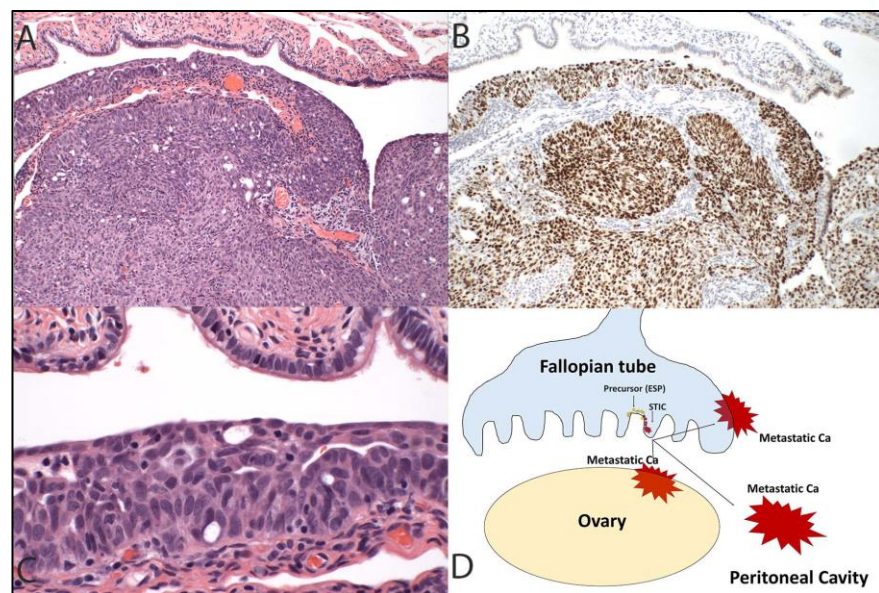


Figure 1. In this more conventional model of high-grade serous cancer development, the tumor initiates in the fallopian tube (A) and contains a TP53 mutation highlighted in this case by diffuse immunostaining for p53 (B) as well as a recognizable serous tubal intraepithelial carcinoma (C). The schematic in (D) depicts a primary tumor of the tube that spreads to the ovary and peritoneal cavity. This progression sequence is one that might be impacted, albeit in a limited way, by early detection schemes. It is also the sequence that, when discovered early, will invariably implicate the fallopian tube as the source of the malignancy.

fallopian tube and over time extends to the ovary or local peritoneal surfaces, after which the tumor

becomes more widespread (Figure 1). Alternatively, these tumors might invade and then spread directly to lymph nodes, which we have seen in tubal carcinomas. Still another possibility is what is seen in women with BRCA mutations who present with isolated serous tubal intraepithelial carcinomas. Approximately one in 20 of these patients will eventually manifest with a metastatic HGSC. This speaks to the fact that even intraepithelial carcinomas often do not possess sufficient biologic potential to metastasize and later emerge with intra-abdominal disease but some do. The scenario which involves precursor escape and eventual intra-abdominal transformation to malignancy is very similar then to the

latter pathway, the only difference being that the initiating lesion of record will not be recognized as a malignancy (Figure 2).

This may appear counterintuitive; however, the likelihood that nonmalignant

Mullerian epithelium can transport from one site to another is real, particularly when one considers the pathogenesis of endometriosis.³⁵

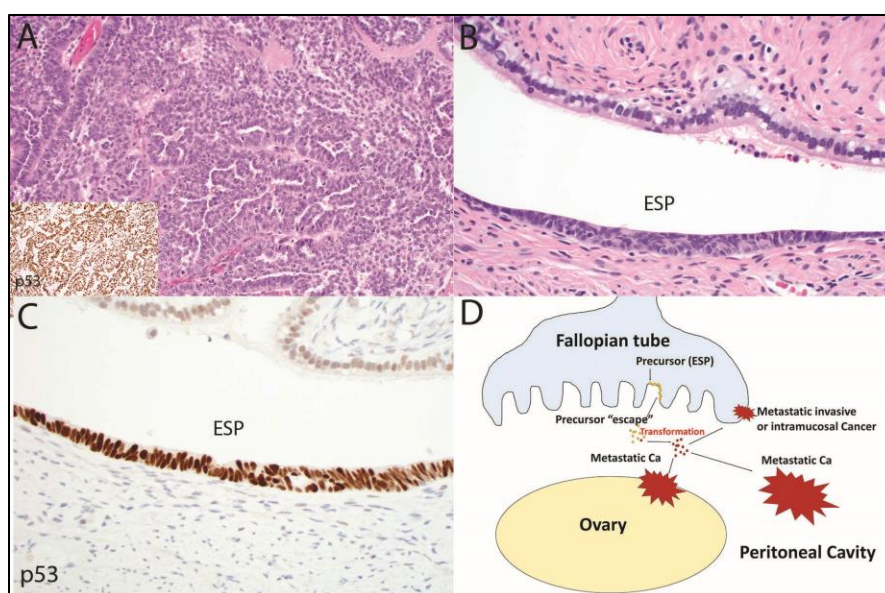


Figure 2. In this second and complementary model of serous tubal carcinogenesis, an advanced malignancy with a TP53 mutation will be discovered (A) yet the only abnormality in the fallopian tube will be an early serous proliferation (ESP)(B) with strong p53 staining indicating a TP53 mutation (C). In this scenario, a serous tubal intraepithelial carcinoma does not develop; rather cells exfoliate from the ESP via "precursor escape" and ultimately emerge as an advanced malignancy. This sequence explains the discovery of widespread serous cancer in the absence of an obvious tubal origin. In contrast to the sequence depicted in Figure 1, this sequence should rapidly terminate in widespread disease and is one that may be impossible to intercept in its earliest stages.

Unanswered questions

The promise of "precursor escape" is the possibility that such a mechanism will explain the origins of many HGSCs and settle the question of origin. If precursor escape is an important if not dominant mechanism of serous carcinogenesis, other existing models must be critically reevaluated. Neither the ovarian surface epithelium/cortical inclusion cyst model nor the secondary Mullerian system model is strongly supported by a recognizable precursor with a TP53 mutation. Nevertheless, there is yet no irrefutable evidence that virtually all HGSCs initiated in the fallopian tube. However, it can be argued that if serous tubal intraepithelial carcinomas and early serous proliferations in the tube occasionally possess the capability to persist and reemerged as metastatic HGSC, it is entirely conceivable that less conspicuous but genetically similar lesions could contribute to this disease. This possibility must be excluded by rigorous pathologic and molecular analysis of fallopian tubes of women with HGSC and a lineage relationship between these proliferations and malignancy must be verified. If proven, this association will certainly inform future strategies for serous cancer prevention, both in the general population and women at high risk for this disease. In the process of this research a more complete understanding of the biologic events taking place during the occult phase of serous cancer development could come to light.

Illustrations

Figure 1. In this more conventional model of high-grade serous cancer development, the tumor initiates in the fallopian tube (A) and contains a TP53 mutation highlighted in this case by diffuse immunostaining for p53 (B) as well as a recognizable serous tubal intraepithelial carcinoma (C). The schematic in (D) depicts a primary tumor of the tube that spreads to the ovary and peritoneal cavity. This progression sequence is one that might be impacted, albeit in a limited way, by early detection schemes. It is also the sequence that, when discovered early, will invariably implicate the fallopian tube as the source of the malignancy.

Figure 2. In this second and complementary model of serous tubal carcinogenesis, an advanced malignancy with a TP53 mutation will be discovered (A) yet the only abnormality in the fallopian tube will be an early serous proliferation (ESP)(B) with strong p53 staining indicating a TP53 mutation (C). In this scenario, a serous tubal intraepithelial carcinoma does not develop; rather cells exfoliate from the ESP via "precursor escape" and ultimately emerge as an advanced malignancy. This sequence explains the discovery of widespread serous cancer in the absence of an obvious tubal origin. In contrast to the sequence depicted in Figure 1, this sequence should rapidly terminate in widespread disease and is one that may be impossible to intercept in its earliest stages.

Bibliography

¹ Cannistra SA. Cancer of the ovary. *N Engl J Med.* 2004;351:2519-29. Erratum in: *N Engl J Med.* 2005 Jan 6;352(1):104

² Scully RE, Yo7ung RH, Clement PB. Atlas of Tumor Pathology; Tumors of the ovary, maldeveloped gonads, fallopian tube and broad ligament. American Registry of Pathology, AFIP, 1998, Bethesda MD, p51

³ Friedman LS, Ostermeyer EA, Szabo CI, et al. Confirmation of BRCA1 by analysis of germline mutations linked to breast and ovarian cancer in ten families. *Nat Genet.* 1994;8:399-404

⁴ Bell DA, Scully RE. Early de novo ovarian carcinoma. A study of fourteen cases. *Cancer.* 1994;73:1859-64

⁵ Henderson JT, Webber EM, Sawaya GF. Screening for Ovarian Cancer: An Updated Evidence Review for the U.S. Preventive Services Task Force [Internet]. Rockville (MD): Agency for Healthcare Research and Quality (US); 2018 Feb. Report No.: 17-05231-EF-1. U.S. Preventive Services Task Force Evidence Syntheses, formerly Systematic Evidence Reviews.

⁶ Zweemer RP, van Diest PJ, Verheijen RH, et al. Molecular evidence linking primary cancer of the fallopian tube to BRCA1 germline mutations. *Gynecol Oncol.* 2000;76:45-5

⁷ Piek JM, van Diest PJ, Zweemer RP, et al. Dysplastic changes in prophylactically removed Fallopian tubes of women predisposed to developing ovarian cancer. *J Pathol* 2001;195:451-6

-
- ⁸ Colgan TJ. Challenges in the early diagnosis and staging of Fallopian-tube carcinomas associated with BRCA mutations. *Int J Gynecol Pathol*. 2003;22:109-20. Review
- ⁹ Medeiros F, Muto MG, Lee Y, *et al*. The tubal fimbria is a preferred site for early adenocarcinoma in women with familial ovarian cancer syndrome. *Am J Surg Pathol* 2006; **30**: 230–236
- ¹⁰ Howitt BE, Hanamornroongruang S, Lin DI, *et al*. Evidence for a dualistic model of high-grade serous carcinoma: BRCA mutation status, histology, and tubal intraepithelial carcinoma. *Am J Surg Pathol* 2015; **39**: 287–93.
- ¹¹ Jarboe EA, Pizer ES, Miron A, *et al*. Evidence for a latent precursor (p53 signature) that may precede serous endometrial intraepithelial carcinoma. *Mod Pathol* 2009;22:345-50.
- ¹² Callahan MJ, Crum CP, Medeiros F, *et al*. Primary fallopian tube malignancies in BRCA-positive women undergoing surgery for ovarian cancer risk reduction. *J Clin Oncol*. 2007;25:3985-90
- ¹³ Vang R, Shih IeM, Kurman RJ. Fallopian tube precursors of ovarian low- and high-grade serous neoplasms. *Histopathology*. 2013;62:44-58
- ¹⁴ Kindelberger DW, Lee Y, Miron A, *et al*. Intraepithelial carcinoma of the fimbria and pelvic serous carcinoma: Evidence for a causal relationship. *Am J Surg Pathol*. 2007;31:161-9
- ¹⁵ Singh N, Gilks CB, Hirschowitz L, *et al*. Primary site assignment in tubo-ovarian high-grade serous carcinoma: Consensus statement on unifying practice worldwide. *Gynecol Oncol* 2016; **141**: 195–198
- ¹⁶ Gockley AA, Elias KM. Fallopian tube tumorigenesis and clinical implications for ovarian cancer risk-reduction. *Cancer Treat Rev*. 2018;69:66-71
- ¹⁷ Nebgen DR, Hurteau J, Holman LL, *et al*. Bilateral salpingectomy with delayed oophorectomy for ovarian cancer risk reduction: A pilot study in women with BRCA1/2 mutations. *Gynecol Oncol*. 2018;150:79-84.
- ¹⁸ Chen F, Gaitskell K, Garcia MJ, *et al*. Serous tubal intraepithelial carcinomas associated with high-grade serous ovarian carcinomas: a systematic review. *Brit J Obstet Gynecol* 2017; **124**: 872–878
- ¹⁹ Kim J, Coffey DM, Ma L, *et al*. The ovary is an alternative site of origin for high-grade serous ovarian cancer in mice. *Endocrinology*. 2015;156:1975-81.
- ²⁰ Auersperg N. Ovarian surface epithelium as a source of ovarian cancers: unwarranted speculation or evidence-based hypothesis? *Gynecol Oncol*. 2013;130:246-51.
- ²¹ Dubeau L. The cell of origin of ovarian epithelial tumours. *Lancet Oncol*. 2008;9:1191-7.

-
- ²² McDaniel AS, Stall JN, Hovelson DH *et al.* Next-generation sequencing of tubal intraepithelial carcinomas. *JAMA Oncol* 2015; **1**: 1128–1132.
- ²³ Folkins AK, Jarboe EA, Saleemuddin A, *et al.* A candidate precursor to pelvic serous cancer (p53 signature) and its prevalence in ovaries and fallopian tubes from women with BRCA mutations. *Gynecol Oncol.* 2008;109:168-73
- ²⁴ Barakat RR1, Federici MG, Saigo PE, *et al.* Absence of premalignant histologic, molecular, or cell biologic alterations in prophylactic oophorectomy specimens from BRCA1 heterozygotes. *Cancer.* 2000;89:383-90.
- ²⁵ Howitt BE, Hanamornroongruang S, Lin DI, *et al.* Evidence for a dualistic model of high-grade serous carcinoma: BRCA mutation status, histology, and tubal intraepithelial carcinoma. *Am J Surg Pathol.* 2015;39:287-93.
- ²⁶ Kotsopoulos J, Gronwald J, Karlan B, *et al.*; Hereditary Ovarian Cancer Clinical Study Group. Age-specific ovarian cancer risks among women with a BRCA1 or BRCA2 mutation. *Gynecol Oncol.* 2018;150:85-91
- ²⁷ Brown PO, Palmer C. The preclinical natural history of serous ovarian cancer: defining the target for early detection. *PLoS Med* 2009; **6**: e1000114
- ²⁸ Ducie J, Dao F, Considine M, *et al.* Molecular analysis of high-grade serous ovarian carcinoma with and without associated serous tubal intra-epithelial carcinoma. *Nat Commun.* 2017;8:990
- ²⁹ Mehra KK, Chang MC, Folkins AK, *et al.* The impact of tissue block sampling on the detection of p53 signatures in fallopian tubes from women with BRCA 1 or 2 mutations (BRCA+) and controls. *Mod Pathol* 2011; **24**: 152–156.
- ³⁰ Lee Y, Miron A, Drapkin R, *et al.* A candidate precursor to serous carcinoma that originates in the distal fallopian tube. *J Pathol.* 2007;211:26-35
- ³¹ Labidi-Galy SI, Papp E, Hallberg D, *et al.* High grade serous ovarian carcinomas originate in the fallopian tube. *Nat Commun.* 2017 Oct23;8:1093
- ³² Vang R, Visvanathan K, Gross A *et al.* Validation of an algorithm for the diagnosis of serous tubal intraepithelial carcinoma. *Int J Gynecol Pathol* 2012; **31**: 243–253.
- ³³ Soong TR, Howitt BE, Miron A, *et al.* Evidence for lineage continuity between early serous proliferations (ESPs) in the Fallopian tube and disseminated high-grade serous carcinomas. *J Pathol.* 2018 Jul 25.
- ³⁴ Zakhour M, Danovitch Y, Lester J, *et al.* Occult and subsequent cancer incidence following risk-reducing surgery in BRCA mutation carriers. *Gynecol Oncol.* 2016;143:231-235

³⁵ Anglesio MS, Wang YK, Maassen M, et al. Synchronous Endometrial and Ovarian Carcinomas: Evidence of Clonality. *J Natl Cancer Inst* 2016;108(6):