

Modified PSO Algorithm for Real-time Energy Management in Grid-connected Microgrids

Md Alamgir Hossain^{1,*}, Hemanshu Roy Pota¹, Stefano Squartini² and Ahmed Fathi Abdou¹

¹*School of Engineering & Information Technology, The University of New South Wales, Canberra, ACT 2610, Australia*

²*Department of Information Engineering, Università Politecnica delle Marche, Ancona, Italy*

Abstract

Real-time energy management of a converter-based microgrid is difficult to determine optimal operating points of a storage system in order to save costs and minimise energy waste. This complexity arises due to time-varying electricity prices, stochastic energy sources and power demand. Many countries have imposed real-time electricity pricing to efficiently control demand side management. This paper presents a particle swarm optimisation (PSO) for the application of real-time energy management to find optimal battery controls of a community microgrid. The modification of the PSO consists in altering the cost function to better model the battery charging/discharging operations. As optimal control is performed by formulating an cost function, it is suitably analysed and then a dynamic penalty function to obtain the best cost function is proposed. Several case studies with different scenarios are conducted to determine the effectiveness of the proposed cost function. The proposed cost function can reduce operational cost by 12% as compared to the original cost function over a time horizon of 96 hours. Simulation results reveal the suitability of applying the regularised PSO algorithm with the proposed cost function, which can be adjusted according to the need of the community, for the real-time energy management.

Keywords: Converter-based microgrids, renewable energy sources, optimum battery control, real-time energy management, and particle swarm optimisation.

Abbreviations

The following abbreviations are used in this manuscript:

PSO	Particle swarm optimisation	BL_o	Initial battery energy level
RESs	Renewable energy sources	BL_{max}	Maximum battery energy level
ESS	Energy storage system	BL_{min}	Minimum battery energy level
SOC	State of charge	P_{wT}	Total wind power
5 ADP	Adaptive dynamic programming	P_{sT}	Total solar power
I-DEMS	Intelligent dynamic energy management system	P_g	Import/export grid power
PV	Photovoltaic	$L(t)$	Load at time t
PCC	Point of common-coupling	$Cost$	Objective function
EMS	Energy management system	u	Battery command signals

*Corresponding author

Email address: Md.Hossain6@student.adfa.edu.au or alamgir_duet@hotmail.com (Md Alamgir Hossain^{1,*})

f_{pc}	Penalty cost function	Pd, max	Maximum discharging rate
RRTP	Real-time electricity price	η	Efficiency
WT	Wind turbine	CF	Constriction factor
SI	Solar irradiation	ϕ	Constriction co-efficient
Pc, max	Maximum charging rate		

1. Introduction

The penetration of renewable energy sources (RESs), such as wind and solar, into existing distribution networks has increased significantly to meet the growing electricity demand and fulfil the target of reducing greenhouse gas emissions [1, 2]. However, these RESs, depending on weather conditions and time of day, are stochastic in nature, resulting in variable power generation. Random application of RESs with this intermittent power generation can create difficulty in control, operation and management of the distribution network [3]. To minimise complexities on an existing power system, the concept of a microgrid has been introduced [4]. A microgrid (consisting of small-scale emerging generators, loads, energy storage elements and a control unit) is a controlled, small-scale power system that can be operated in an islanded and/or grid-connected mode in a defined area to facilitate the provision of supplementary power and/or maintain a standard service [5]. In the case of grid-tied microgrids, power can be exchanged with the main grid depending on electricity prices. Although electricity price per kWh is generally fixed, it may vary over the time to have better demand management with the help of smart meter technologies capable of measuring power generation and demand in each time instant [6].

The central control unit in a microgrid is responsible for an efficient power management with the help of an energy storage system (ESS) with or without grid-connection. The application of ESSs increases the stability of the grid utility, upgrades the capacity of transmission lines, allows RES penetration, levels load curves, mitigates voltage fluctuation, and improves power quality and reliability [7]. An ESS absorbs surplus power and then dispatches it later when input sources are not available, e.g., at night time for solar panels. In addition, energy can be stored when electricity prices are low and sold during the hours of high prices to minimise operational costs, allowing more flexible and reliable energy management for a community microgrid. To control the battery energy optimally for reducing electricity costs of investors, the formulation of the cost function considering charging and discharging factors needs to be carefully analysed in addition to the application of efficient algorithms.

An intelligent energy management for handling uncertainties in microgrids becomes essential to maintain reliable power supply. Energy management for a microgrid, consisting of solar, wind and battery, involves determining the most economical control of stored energy that reduces the operating cost subject to the satisfaction of a number of operating constraints. Although conventionally if-else rule-based policies, where initial sets of rules are fixed for different scenarios, are employed, they can not provide an optimal control policy [8, 9]. Generally, in this method, energy is dispatched based on available power and state of charge (SOC) of the battery, and stored if power generation is higher than power demand [10]. In addition, abrupt charging and discharging decisions can decrease the lifetime of the storage system without providing maximum benefits.

To improve optimal control approaches for battery energy, a lot of optimisation algorithms, such as linear

40 programming [11, 12, 13], dynamic programming [14], fuzzy logic [15] and adaptive dynamic control [16], are studies in literature. In [17], an expert-based control approach incorporating operating constraints, such as SOC limits and charging/discharging current limits, is presented to optimally use the storage systems for dispatching RESs smoothly. In [15], a fuzzy logic expert system to minimize the operations cost and emission levels of a microgrid is developed. A power management mechanism using dynamic programming for photovoltaic (PV)
45 systems with storage to allow massive penetration of PV power into a distribution network is described in [18]. In [19], a firefly algorithm to find optimal operation of a microgrid considering lifetime characteristics of battery is applied. A batch reinforcement learning algorithm to optimally schedule the battery energy for maximising self-consumption of local power generation in a microgrid is presented in [20]. The adaptive dynamic programming (ADP) for the residential power management and control that focus on the home battery
50 management is applied in [21]. ADP is employed in an office building to control battery energy management optimally [22]. An intelligent dynamic energy management system (I-DEMS) is developed to optimally use RESs and an energy storage system for maintaining continuous electricity supply to critical loads [8].

In most of the literature reported above, the contribution remains in the application of new algorithms with different objective functions and reduction of simulation time to minimise operational costs. Although a
55 formulation of an objective function has a direct involvement in altering results, little attention has been paid when applying it to efficiently control the battery energy. Consequently, slight improvements in their results can be observed when their methods are compared to that of others. To find improved solutions quickly and continuously, this paper proposes a particle swarm optimisation (PSO) that runs any time a new sample is available (in our simulations this occurs with a sampling time equal to 1 h) for analysing cost functions and
60 then a penalty function related to a dynamic electricity price is multiplied to the charging component. This is done for optimally charging and discharging the battery energy in order to exchange energy to the grid utility depending on electricity prices and availability of local generated power. The major contributions are listed as follows:

- A regularised PSO algorithm in which a different procedure is used from the conventional one is presented
65 for the application of real-time energy management of a community microgrid,
- Cost functions, used to determine the output of an optimisation algorithm, for determining charging/discharging energy amount of a battery are analysed, and
- A dynamic penalty function, which can be tuned depending on energy production of RESs, to efficiently manage battery energy is proposed to the cost function.

70 The rest of the paper is organised as follows. Section 2 introduces an overview of a community microgrid. In Section 3, different components of the microgrid to facilitate the analysis are modelled. Section 4 proposes a cost function with constraints after analysing other ones. In Section 5, the metaheuristic optimisation algorithm in the standard and regularised forms is presented. Simulation results for the different cost functions in two scenarios are performed in Section 6. Section 7 concludes the study.

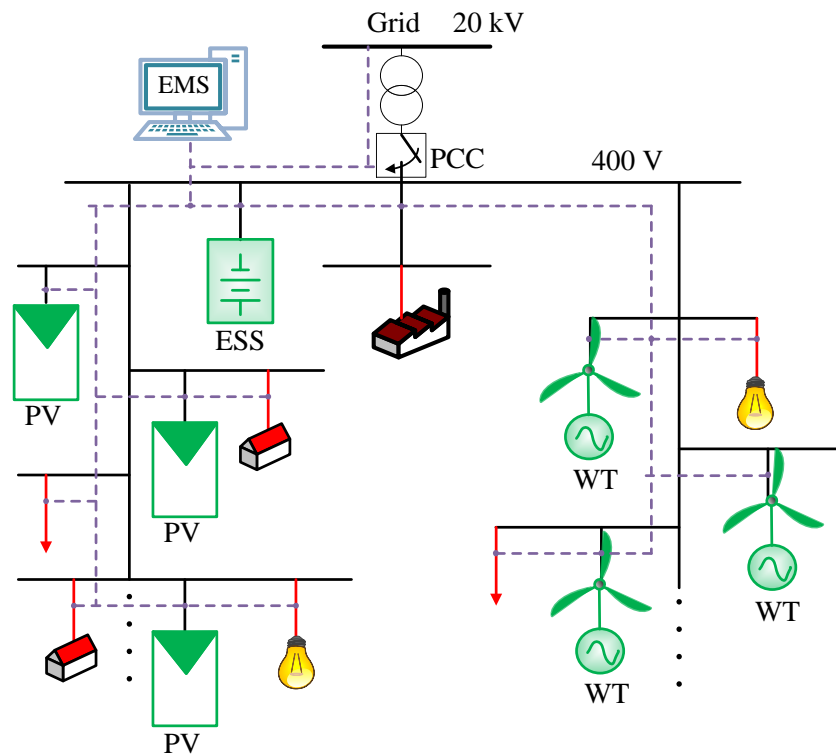


Figure 1: A typical converter-based microgrid.

75 2. Description of a community microgrid

A community microgrid using local resources to meet power demand is illustrated in Figure 1. The community consists of twenty houses, among them four houses are equipped with solar panels of 5 m^2 areas and six wind generators are installed. Thus, the microgrid consists of PV generators, wind generators, an energy storage system, local loads, a main electrical grid and an energy management system (EMS). The microgrid is connected to the main grid through a transformer and the point of common coupling (PCC). Although the microgrid is capable of operating either islanded or grid-tied modes, only latter is taken into account for this paper to exchange powers. The main grid and RESs can supply the power to loads and/or charge the battery. The excess energy after meeting local demands from RESs can be sold to the grid in order to reduce operational costs. Due to security and reliability issues of continuous power supply to local loads, in this study, the battery energy is not used to sell its energy.

The EMS manages the energy to ensure the requirement of the local power demand over the time periods and to exchange power with the main grid during excess and scarcity of local power generation. Although a number of countries may not approve an energy business with the grid utility due to their rules and regulations, this study considers case studies where there are no obligations for this business rather than the encouragement of microgrid investors. The total capacity for PV generators, wind generators and battery are taken as 20 kW, 30 kW and 35 kWh, respectively. The battery capacity considered to supply one hour local load increases complexities of the analysis due to small storage system with stochastic power generation. Generally, battery capacity is estimated three time greater than the maximum load demand to maintain continuous supply at least three hours after the loss of grid connection [23]. The optimal size determination of the microgrid parameters

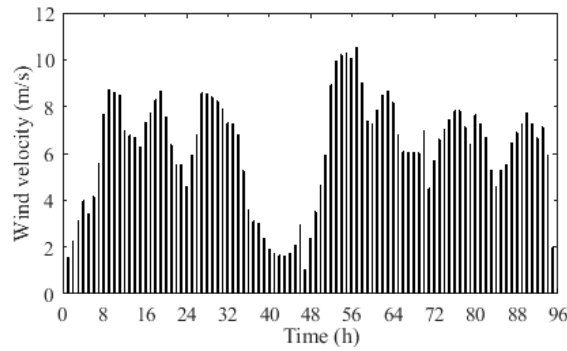
Table 1: Input parameters.

Parameter	Value	Unit
PV generators		
Total covered area, A	20	m ²
Efficiency, η_s	15	%
Maximum power	20	kW
Wind generators		
Cut-in velocity	3	m/s
Cut-out velocity	25	m/s
Rated speed	10	m/s
Efficiency, η_w	95	%
Maximum power	30	kW
Battery		
Efficiency, η_b	95	%
Initial energy level, BL_o	17.5	kWh
Maximum energy level, BL_{max}	35	kWh
Minimum energy level, BL_{min}	7	kWh
Energy capacity	35	kWh
Maximum charging rate	3.5	kWh
Maximum discharging rate	-3.5	kWh

95 is out of scope of this paper. The parameters of a solar generator, wind generator and battery are given in Table 1.

Although the generated power, which is unpredictable and can not directly be handled, may be partially controlled using power curtailment strategy, this study considers to operate all RESs in maximum power tracking modes to extract maximum power. As a result, controlling battery energy, which is a crucial issue for
 100 the consideration of dynamic electricity prices, available energy and satisfaction of power demand, is the only option for these types of microgrids. The battery can be used one of the following options at a time:

- Charge modes: the battery can be charged from the grid and/or RESs with an energy quantity which is not beyond the charging rate;
- Discharge modes: the battery supplies energy to the loads when prices are high with an energy quantity
 105 within the battery discharging rate;
- Inactive modes: there is no activity of the battery energy in this mode as the grid utility directly supplies the electricity to loads at certain hours in order to consider economic perspectives.

Figure 2: Wind velocity, v_1 .

3. System modeling

3.1. Wind generators

Wind power, a free available energy source, is the electric power generated by the rotating turbine blades, mounted on a tower at a considerable height, while wind hits the blades of the wind turbine. As the wind is stochastic in nature, the wind turbine has no control over its generated power. Therefore, power generation by the wind turbine solely depends on the availability of wind speed and this varies with heights. The wind speed v_1 for this paper is shown in Figure 2. The wind speed measured at anemometer height needs to be converted to hub heights by the following power law equation [24]:

$$\frac{v_2}{v_1} = \left(\frac{h_2}{h_1} \right)^\alpha \quad (1)$$

110 where v_1 and v_2 are the wind velocity at the hub height h_1 and h_2 , respectively, and α is the power-law exponent which is a function of parameters [25, 26]. The value of α is generally considered as 1/7 for an open space.

The power generated by the wind turbine is a function of wind velocity, and a piece-wise function relates the relationship between the wind speed and output power as follows [27]:

$$P_w = \begin{cases} 0 & \text{if } v_f \leq v \text{ or } v \leq v_c \\ P_r * \frac{v^3 - v_c^3}{v_r^3 - v_c^3} & \text{if } v_c \leq v \leq v_r \\ P_r & \text{if } v_r \leq v \leq v_f \end{cases} \quad (2)$$

115 where P_r and v_r are the rated electrical power and rated wind speed, respectively, and v , v_c and v_f represent wind speed, cut-in wind speed and cut-off wind speed, respectively.

For a number of wind turbines taking into consideration of the generator efficiency, the total output power can be extracted as follows:

$$P_{wT} = P_w \times \eta_w \times N_w \quad (3)$$

where η_w and N_w are the wind generator efficiency and number of wind generators, respectively.

3.2. Solar generators

Power generated by PV panels from sunlight is known as solar power. In PV panels, sunlight is converted into dc electricity. In solar power generation, the size of PV panels and solar irradiation (SI), which determines

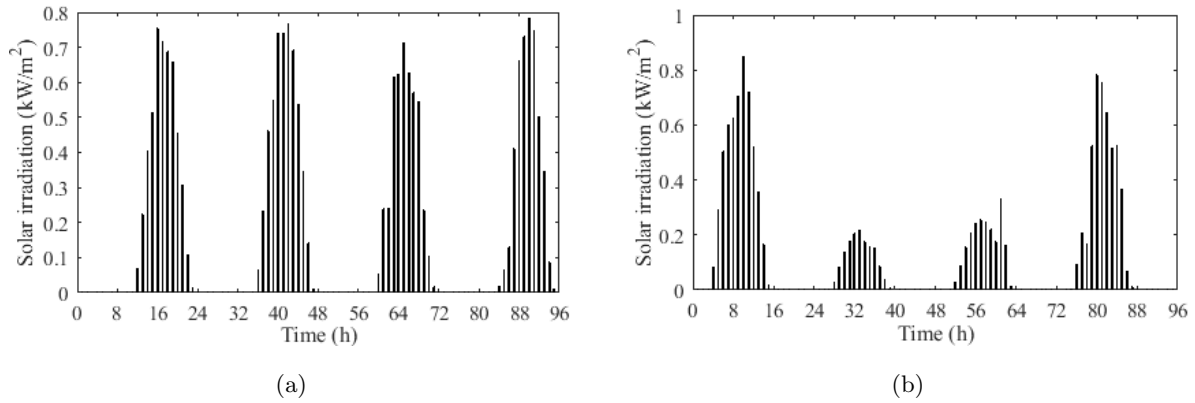


Figure 3: Solar irradiation over a 96 h horizon (a) Scenario 1 and (b) Scenario 2.

120 the amount of direct and defused energy on an earth surface, play a vital role. The SI varies from place to place and is expressed as kW/m^2 . To receive efficient energy transfer, the PV panels are operated with the maximum power point tracking (MPPT) mode [28].

The output power of the PV panel depends on its size and efficiency, and can be calculated as a function of SI with the assumption of operation at MPPT mode as follows:

$$P_s = \eta_s * A * SI(1 - 0.005(t_o - 25)) \quad (4)$$

where η_s and A are the overall efficiency and area of PV panels, respectively, SI and t_o denote solar irradiation and outside air temperature, respectively.

For a number of solar generators, the total output power can be extracted as follows:

$$P_{sT} = P_s \times N_s \quad (5)$$

125 where N_s is number of solar generators.

3.3. Converters

Converters, including dc/dc and dc/ac conversions, are used to match the frequency of power generated by distributed generators to the distribution network converting from dc power to ac power. Therefore, converters' efficiency are considered with the following equation [29]:

$$\eta_{con} = \frac{\frac{P_s}{P_n}}{\frac{P_s}{P_n} + \eta_o + k\left(\frac{P_s}{P_n}\right)^2} \quad (6)$$

where $\eta_o = \left(\frac{10}{\eta_{10}} - \frac{1}{\eta_{100}} - 9\right)/99$ and $k = \frac{1}{\eta_{100} - \eta_o - 1}$. P_n and P_s are the nominal power and output power of the converter, respectively, and η_{100} and η_{10} are the converter efficiency provided by manufacturer at 100% and 10% nominal power, respectively.

130 3.4. Energy storage systems

Several forms of an ESS are available in practice, such as supercapacitors, electrochemical batteries, superconducting magnetic energy storage, compressed air energy storage and flywheel energy storage. Electrochemical batteries are selected in this study due to their popularity in storing electrical energy. The storage system can minimise the effect of the stochastic nature of RESs on microgrid to balance power generation and demand.

This can be achieved by charging and discharging the storage system during extra and deficient energy from RESs, respectively. The charging and discharging models of the battery can be represented as follows:

$$BL(t) = BL(t - 1) + \Delta t P_c(t) \eta_c \quad \text{if battery is charged} \quad (7)$$

$$BL(t) = BL(t - 1) - \Delta t P_d(t) / \eta_d \quad \text{if battery is discharged} \quad (8)$$

subject to the following battery constraints:

Power limits:

$$P_{c,max} > P_c > 0$$

$$P_{d,max} < P_d < 0$$

Battery energy level limits:

$$BL_{max} > BL(t) > BL_{min}$$

where $P_c(t)$ and $P_d(t)$ are the charging and discharging powers of the battery at time, t , respectively, $BL(t)$ and Δt are the storage energy at time t and the interval of time period, respectively, and η_c and η_d are the charging and discharging efficiency, respectively. For simplicity, η_c and η_d are assumed as unity.

The operating commands, $u(t)$, of the battery from the optimisation algorithm determine the charging and discharging energy amount. The positive values of $u(t)$ indicate $P_c(t)$ while negative values refer to $P_d(t)$.

3.5. Loads

The residential load varying hourly with noise, $L(t)$, is a (piecewise) continuous function with the time step of 1 h. The time steps could be small in minute ranges, but for the sake of consistency with other literature [30, 31, 32], the time slot is taken as 1 h. The typical load profile for a house, which is taken from the usage of daily household appliances, is illustrated in Figure 4. The maximum load is considered around 1.8 kW, which covers the basic loads of a house, such as refrigerators, lights, TVs, fans, computers and air-conditioning. It is assumed that the total houses are twenty, with the similar load patterns. It is observed that everyday there is physical-activity routines of the householders reflected as a spike during the day time and the highest activities are carried out during the night-time, revealing cooking and relaxing activities before sleeping in Scenario 1. However, in Scenario 2, the load pattern is slightly altered to increase versatility in the simulation results.

3.6. Electric grid

One of the microgrid features is to purchase power from and sell back to the grid utility. For simplicity, buying and selling electricity prices, which is determined in real-time for shifting loads from peak hours to off-peak hours to efficiently manage power demand, at time t is identical, denoted as $C(t)$ (cents/kWh). In real-time pricing, the rate varies over the time periods depending on wholesale market prices that are changed with respect to power demand, i.e., peak demand indicates high rate of electricity usages [21]. A typical real-time electricity rate is demonstrated in Figure 5. The unit of the rate is expressed as cents of an Australian dollar per kilo-watt hour. The rates are set to be suitably matched with the future Australian electricity market, although the variation is taken from the real-time electricity prices [33].

The import and export power at time t is denoted as $P_g(t)$ kW, with the following interpretation:

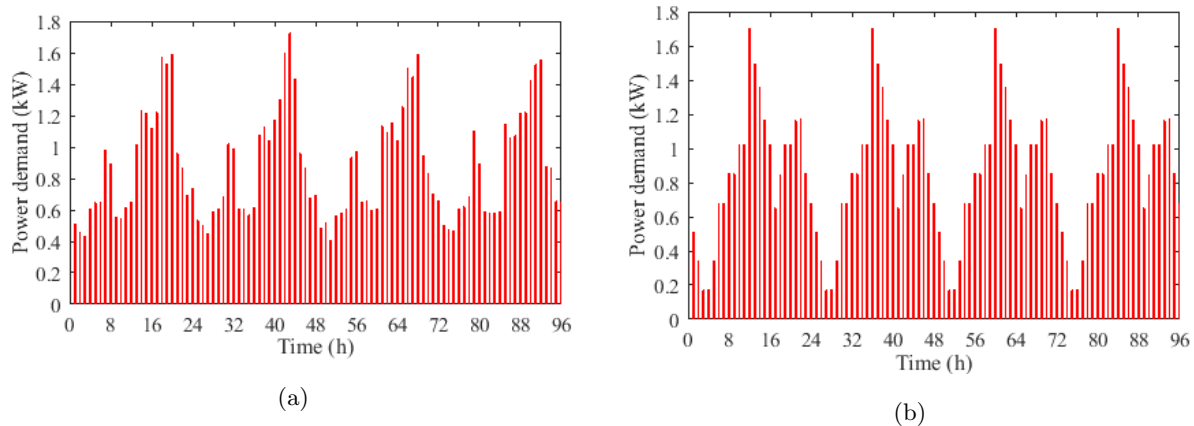


Figure 4: Typical power demand of a householder over a time horizon of 96 hours (a) Scenario 1 and (b) Scenario 2.

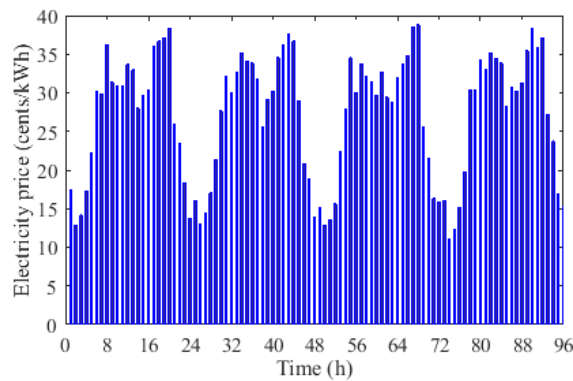


Figure 5: Real-time electricity pricing in a 96 h horizon.

- $P_g(t) > 0$ if power is imported from the grid, and
- $P_g(t) < 0$ if power is exported to the grid.

To reliably operate the grid network, it is assumed that power can be exchanged within the following limits.

$$P_{gmin} < P_g < P_{gmax}$$

160 where P_{gmin} and P_{gmax} are the minimum and maximum power exchange limits with the grid utility, respectively.

In this study, the limits are considered as ± 15 kW that a microgrid can import and export in order to maintain reliability of power supply and reduce operational costs.

4. The proposed cost function

165 The target of this study is to reduce electricity costs and make profit by exchanging the power of microgrids with the grid utility. In this case, the performance index is first formulated then the PSO algorithm is applied for solving the index in order to obtain optimal control operations of an energy storage system.

The minimum values of the performance index indicates the lowest energy costs and optimal control policies. The performance index, which is also known as objective or cost function, is generally formulated as the buying and selling electricity costs of a microgrid as follows:

$$Cost_{original}(t) = P_g C(t) \quad (9)$$

where $C(t)$ is the real-time electricity pricing (RRTP) and P_g , a positive or negative value indicating buying or selling power, is a function of battery commands, renewable energy and power demand. The P_g as a decision variable of the optimisation algorithm can be computed from two approaches of which one is to select random grid power within given limits while another is to take random battery commands. The later is considered in this paper to optimally control the battery power.

The cost function of Eq. (9) implemented in [21, 34, 35, 22] indicates the discharging of battery power as it can guarantee the low electricity prices. Therefore, a charging term, which is the absence of the battery energy, is added in [36, 37, 30] to charge the battery from renewable energy to obtain optimal control actions of the battery as follows:

$$Cost_{alternative}(t) = \sqrt{((L(t) - P_{sT}(t) - P_{wT}(t) + u(t))C(t)/C_{min})^2 + (BL_{max} - (BL + u(t)))^2} \quad (10)$$

where $L(t)$, $P_{sT}(t)$ and $P_{wT}(t)$ denote total load, total solar power and total wind power at the time t , respectively, and C_{min} and $u(t)$ refer to the lowest electricity price and charging/discharging commands of battery energy, respectively. The first term of Eq. (10) indicates a discharging component of the battery energy, which is also related to purchasing electricity from the grid, while the second term is a charging parameter. The charging component is a critical portion for the optimal controls of the battery energy. This is because of its involvement in charging the battery during low electricity prices and the full battery charging during an upcoming event. As a result, a dynamic penalty function is proposed for the first time in this paper to complete the task in an optimal way as follows:

$$Cost_{proposed}(t) = \sqrt{((L(t) - P_{sT}(t) - P_{wT}(t) + u(t))C(t))^2 + (f_{pc}(BL_{max} - (BL + u(t))))^2} \quad (11)$$

where $f_{pc} = k - C(t)$ refers to a penalty function for charging the battery energy efficiently by determining the k value, which is generally calculated as an average value of electricity prices over a day. Changing the value of k has a direct effect in minimising electricity costs. The minimum values of the $Cost_{proposed}$ indicate discharging the battery during low power generation and/or higher electricity prices, or charging the battery when power generation is high and/or prices are low. The command signals, u , must satisfy the battery constraints to protect immature degradation of the battery capacity, otherwise the command is invalid and must be discarded with a high penalty cost during the optimisation process. As the cost function as formulated is calculated with a time step of 1 hour (step-by-step), the algorithm evaluates the function as an on-line approach. The square root term is used to obtain a non-negative value of the cost function.

4.1. Constraints:

To determine the feasible solutions of the cost functions, the following constraints, equalities and inequalities, are imposed as follows.

Energy balance: The utility function must satisfy the energy balance equation as follows:

$$P_g(t) + P_{sT}(t) + P_{wT}(t) = L(t) + u(t) \quad (12)$$

where u and L are the charging/discharging power of the battery commands and load power consumption, respectively, and P_{wT} , P_{sT} and P_g are the wind, solar, and grid power, respectively. The reason of u at the right hand side of the equation is that the negative values of it indicate the discharging of the power while positive values the charging.

Battery energy: In the utility function, only $u(t)$ is varied to find the optimal solution. The commanded signal, $u(t)$, controls the battery energy as an on-line approach since the utility function proceeds step by step over the time horizon without the prior knowledge of the energy status. The values of $u(t)$ must satisfy the following constraints in order to extend the lifetime and efficiency of a battery.

- 1) The charging and discharging rate must be within the given limitations, i.e., $(P_{c,max} < u(t) < P_{d,max})$. These limitations are imposed to decrease overheating while charging and discharging the batteries.
- 2) The energy level of the battery must maintain upper and lower limits, i.e., $BL_{min} < BL + u(t) < BL_{max}$. The lifetime of the battery depends on the status of energy levels, for example, if the battery is operated at a lower level charge or it is overcharged, the lifetime of the battery decreases.

Energy exchange: Power from the microgrid can be exchanged with the grid utility as ± 15 kW.

Remarks: As there is a single decision variable, u , in Eq. (11), one may think to solve the problem in an accurate way through mathematical calculation in each hour by applying Lagrange multiplier, and therefore, optimisation algorithms are not needed. The reasons for the application of the optimisation algorithm are explained below.

By applying Lagrange multipliers, the objective function at a specific time can be formulated as follows:

$$L(u, \lambda_1, \lambda_2) = \sqrt{((L - P_{sT} - P_{wT} + u)C)^2 + (f_{pc}(BL_{max} - (BL + u)))^2} + \lambda_1(u - P_{c,max}) + \lambda_2(P_{d,min} - u). \quad (13)$$

The energy balance equation is not considered as equality constraint in Eq. (13) because decision variable, u , does not depend on the parameters.

The constraints $(u - P_{c,max})$ and $(P_{d,min} - u)$ in Eq.(13) are satisfied when they are negative-valued. The derivatives of Eq. (13) with respect to u , λ_1 , and λ_2 can be represented as follows:

$$\frac{(L - P_{sT} - P_{wT} + u)C - f_{pc}(BL_{max} - (BL + u))}{\sqrt{((L - P_{sT} - P_{wT} + u)C)^2 + (f_{pc}(BL_{max} - (BL + u)))^2}} + \lambda_1 - \lambda_2 = 0 \quad (14)$$

$$u - P_{c,max} = 0 \quad (15)$$

$$P_{d,max} - u = 0. \quad (16)$$

From Eqs. (15) and (16), it can be clearly seen that the equations can not be satisfied due to $P_{c,max} \neq P_{d,max}$, and consequently the u can not be equal for both $P_{c,max}$ and $P_{d,max}$ [38]. As a result, optimisation algorithms are needed to solve the proposed problem.

5. The PSO algorithm

This study presents a regularised PSO algorithm to optimally control the battery energy, which reduces electricity cost of a grid-connected microgrid. The PSO is a stochastic optimization technique that finds the optimal solution for a formulated problem by iteratively attempting to enhance a candidate solution. This method was originally developed by Eberhart and Kennedy in 1995 [39], inspired by certain social behavior seen in bird flocking or fish schooling.

In PSO, a random number of particles in the search space of the problems are evaluated based on the objective function at its current location. Then each particle changes its position by determining movements through the search space based on its own current locations, previous velocities, and overall the best locations,

210 with some random perturbations. The velocity of each particle is iteratively changed in order to obtain the best position. The next step starts again after updating the position of each particle. In this process, the swarm as a whole is able to explore a near optimal solution [40]. As particles interact with each other, they progress toward the optimal solution.

5.1. Standard PSO

The most important aspect of the PSO is its straightforward calculation method that considers only two model equations of the position and velocity vectors in N -dimensional solution space. The movement and position of each particle i can be expressed as v_i^{k+1} vector and x_i^{k+1} vector, respectively, as follows:

$$v_i^{k+1} = wv_i^k + c_1r_1(p_i^k - x_i^k) + c_2r_2(p_g^k - x_i^k) \quad (17)$$

$$x_i^{k+1} = x_i^k + v_i^{k+1} \quad (18)$$

215 where v_i^k refers to the i^{th} particle velocity for k^{th} iteration in N -dimension, x_i^k denotes i^{th} particle position for k^{th} iteration, p_i is the best position of an individual particle i , and p_g the best position achieved among all particles. In addition, r_1, r_2 are the random numbers of the uniform distribution within the range of $[0, 1]$, and c_1, c_2 represent learning factors used to control the significance of the best solution. The implementation steps of the PSO are illustrated in Figure 6. It is clear that it has a minimum number of parameters that need to be determined. One of the parameters is population size, which is often set in the range of 20–50, and the values of w and c_1, c_2 are considered as unity and two, respectively.

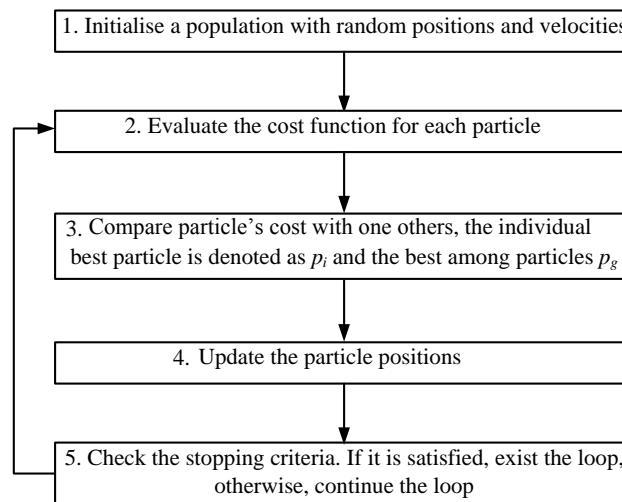


Figure 6: The standard PSO flowchart.

5.2. Regularised PSO

If particle velocities are not restricted when PSO is run, then the velocities can increase to unacceptable levels within a few iterations. Therefore, this approach was modified by the introduction of constriction coefficients to regulate particle velocities [41]. The coefficient controls the particle movements and directs them toward the convergence. The modified velocities of particles can be represented as follows:

$$v_i^{k+1} = w_{CF}^k v_i^k + C_1 r_1 (p_i^k - x_i^k) + C_2 r_2 (p_g^k - x_i^k) \quad (19)$$

where $w_{CF} = wCF$, and C_1, C_2 refer to cognitive and social components that have an influence on convergence speed and the finding of an optimal point in the search space. The C_1 and C_2 can be represented as follows:

$$C_1 = CF\phi_1 \quad (20)$$

$$C_2 = CF\phi_2 \quad (21)$$

where

$$CF = \frac{2}{|\phi - 2 + \sqrt{\phi^2 - 4\phi}|}$$

$$\phi = \phi_1 + \phi_2$$

$$\phi_1 + \phi_2 \geq 4$$

where CF and ϕ represent a constriction factor and co-efficient, respectively. Generally, ϕ is set 4.1 where $\phi_1 = \phi_2$. Now, the constriction particles can help to converge the process toward optimal solutions without using the velocity limits. However, a better approach is to use limits of velocities and positions.

5.2.1. The procedure for the application of the PSO algorithm

The following procedure is applied while evaluating the cost function of each hour.

Part I: Initialisation

1. Load parameters of the components according to Table 1;
2. Load meteorological data (hourly wind speed, solar irradiation and load profile);
3. Calculate total loads, wind power and solar power;
4. Set the parameter of the PSO:
 - (a) Search space dimension = 1;
 - (b) Population size = 50;
 - (c) Maximum number of iteration = 100;
 - (d) Constriction co-efficient, $\phi = 4.1$;
 - (e) Damping ratio of inertia coefficient, $w_{damp} = 0.99$;
 - (f) Inertia coefficient, $w = 0.73$;
 - (g) Penalty factor = 10^6 ;

Part II: Iteration for the real-time evaluation

1. For each particle, the position and velocity vectors are randomly selected;
2. Evaluate the objective functions to find the fitness value of each particle;
3. Internal iteration start:
 - (a) Update the velocity and position of each particle according to Eqs. (19) and (18), respectively, with taking into account their limits;

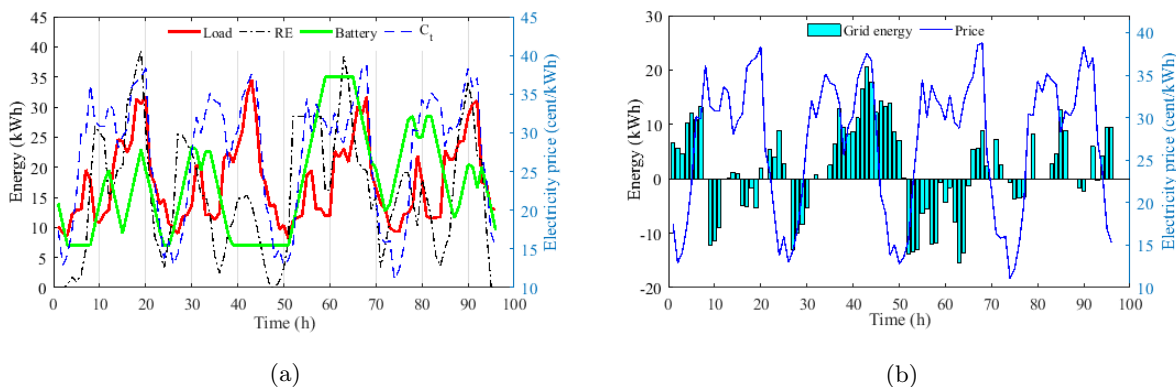


Figure 7: Original cost function for Scenario 1: (a) charging/discharging cycles of the battery energy and (b) energy exchanges with the grid.

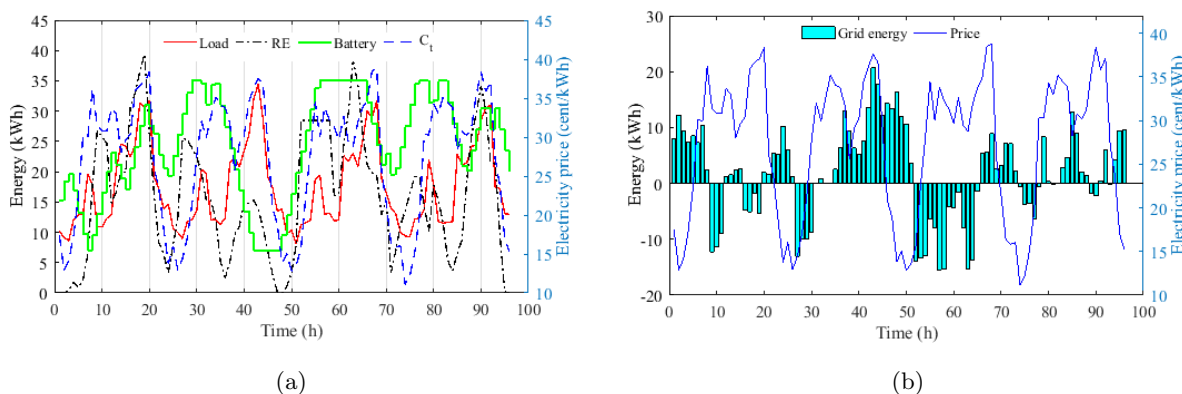


Figure 8: Alternative cost function for Scenario 1: (a) charging/discharging cycles of the battery energy and (b) energy exchange with the grid.

- (b) Calculate the objective function while all constraints are satisfied, otherwise impose penalty factor to discard the solution;
- (c) Set the individual best and global best value by comparing the cost function values;
- (d) Update inertia weight;
- (e) Repeat steps from 3 until the termination criterion, i.e. maximum number of iterations, is satisfied.

250

6. Simulation results

In this section, numerical experiments and comparisons are demonstrated to examine the performance of the proposed cost function. In this paper, the grid-connected microgrids is considered, where the EMS unit manages the energy flow of the sources ensuring load demand of the community microgrid in order to reduce operational costs. The electricity cost is minimised by the optimal battery operations as a function of power generation, load demand and electricity prices, with the application of the regularised PSO algorithm. The battery capacity is chosen as 35 kWh, and the lower and upper storage limits is considered as 7 kWh and 35 kWh, respectively. The initial energy level of the battery is taken as 17.5 kWh. Table 1 displays the other input values of the microgrid parameters. The simulation is calculated over 96 hours horizon with a time slot of 1 h.

260

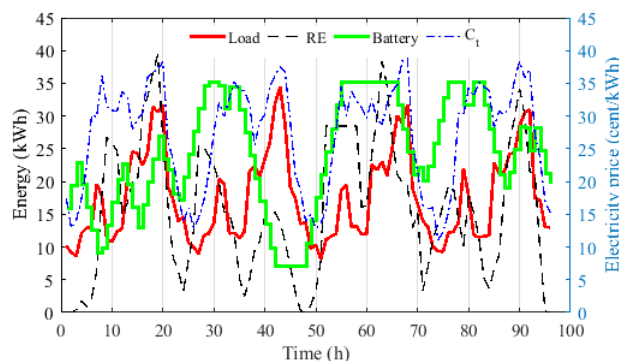


Figure 9: Proposed cost function for Scenario 1: optimal charging/discharging cycles of the battery energy.

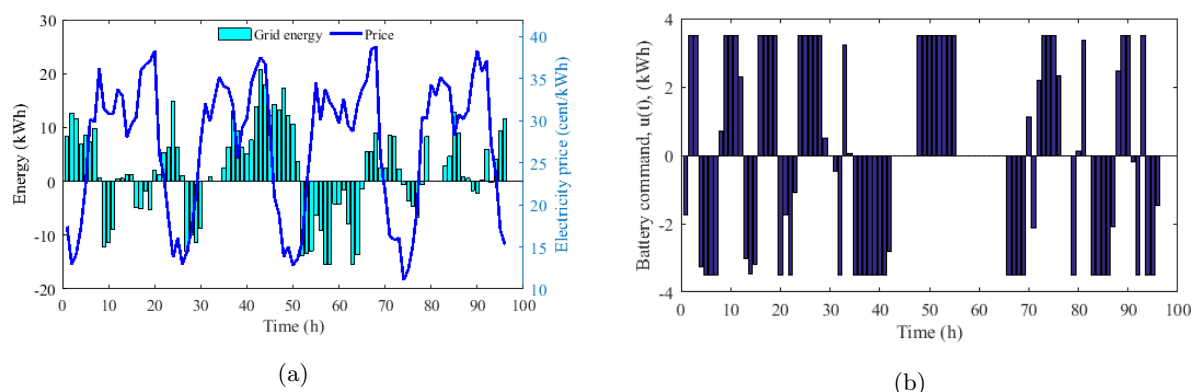


Figure 10: Proposed cost function for Scenario 1: (a) energy exchange with the grid and (b) command signals for the battery energy.

6.1. Scenario 1

Case 1: With original cost function

Generally, researchers consider the cost of buying electricity from the grid utility depending on electricity prices over the time periods [42, 34, 35, 22]. This is formulated as $P_g \times C_t$, where P_g is a decision function, consisting of loads, renewable energy and energy dispatch of the battery. If only this cost function without a square root is applied to obtain the optimal values for the application of the PSO algorithm, this, indeed, provides only the discharging of the whole battery from the initial energy level, EL_o . However, if the cost function is equipped with a square root, then it can continue as charging and discharging cycles as shown in Figure 7a due to only positive values of the function. It is observed that the battery energy is being discharged from the initial time, $t = 0$, to feed the loads as RESs are not producing power. The battery is only charged when renewable power is higher than the load demand, and it is discharged when load demand is higher than the local power supply. The reason for this scenario is that the cost function is developed for discharging the battery power in order to minimise electricity costs; however, the battery is charged when renewable energy is more than the load demand due to the square root terms. In this simulation, the total electricity cost for the application of renewable energy and battery is \$ 38.59 for a time horizon of 96 hours after actively engaging in the electricity business. It is noticeable from Figures 7a and 7b that the algorithm does not take into account the electricity prices to charge and discharge the battery energy.

Case 2: With alternative cost function

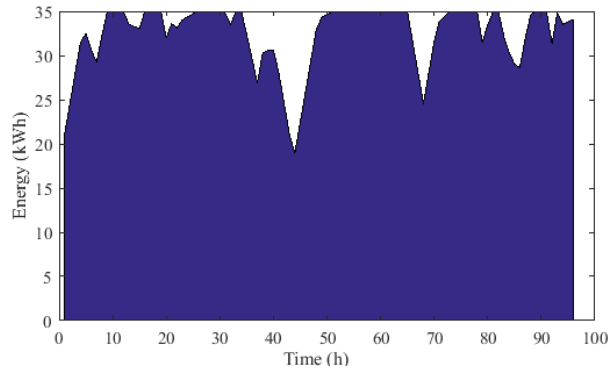


Figure 11: Reserved battery energy for special events.

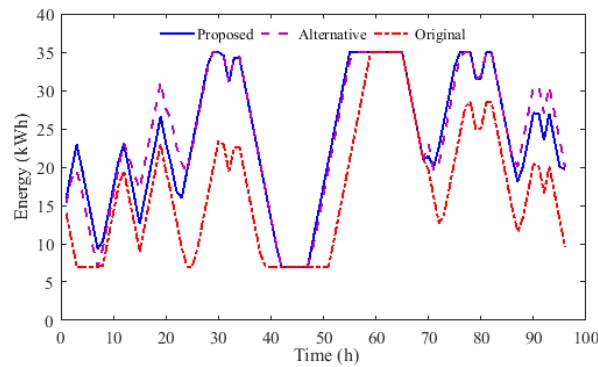


Figure 12: Comparison among proposed, alternative and original cost functions for Scenario 1.

To charge the battery from the RESs and grid utility supply, a charging term that corresponds to the absence of full charge needs to be added to incur an additional cost in the objective function. This is done mathematically as $BL_{max} - (BL + u)$, which always provides an extra cost if the battery is not fully charged. The square root for the both terms, charging and discharging, is applied at the function to charge the battery from the RESs and grid utility [36, 30, 37]. After adding the term to the objective function with a square root, the simulation results are observed in Figure 8. The battery is charged during low electricity prices up to a certain time, $t = 4$ h, while power is drawn from the grid utility for loads as well. After that, the battery discharges the power to feed loads to reduce electricity costs when electricity prices are high. It is also observed that the battery is

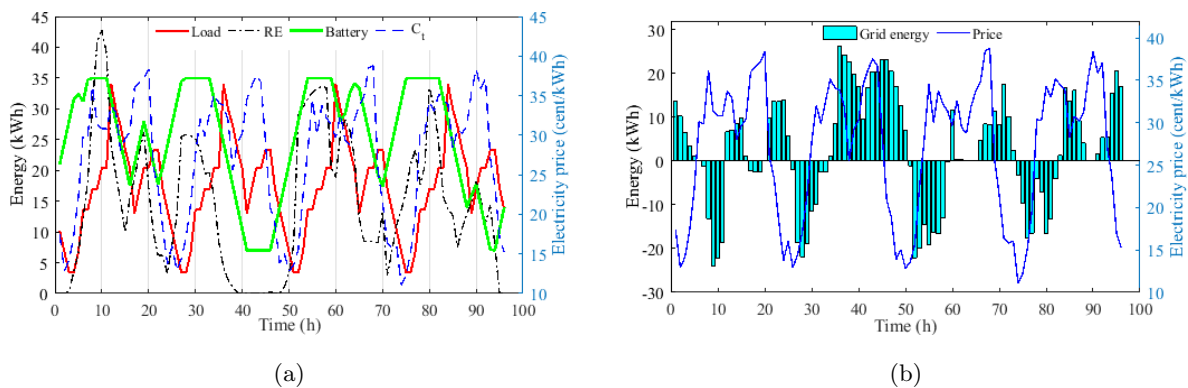


Figure 13: Proposed cost function for Scenario 2: (a) optimal charging/discharging cycles of the battery energy and (b) energy exchange with the grid.

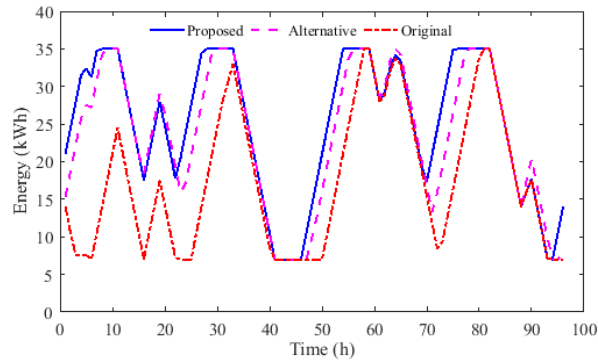


Figure 14: Comparison among proposed, alternative and original cost functions for Scenario 2.

Table 2: Comparison among cost functions in Scenario 1.

Cost function	Electricity cost	% Saving
Original (9)	38.57	0
Alternative (10)	36.11	6.38
Proposed (11)	33.76	12.47

charged during higher renewable power than load demand. In the alternative objective function, the algorithm endeavours to provide an optimal solution based on the defined cost function. However, due to the lack of a proper formulation, it still struggles to find an optimal solution. The electricity cost of this method is \$ 36.11 for a time horizon of 96 hours.

Case 3: With proposed cost function

The limitations of the alternative cost function can be overcome by multiplying a penalty function with the charging component for not charging the battery during low electricity prices and renewable energy availability. This penalty function can be static or dynamic based on the electricity prices. However, the static penalty function generally fails to optimally charge the battery if varying electricity price is applied because of not following up its variation. Therefore, this paper proposes a dynamic penalty function that is based on the electricity prices as $f_p = K - C(t)$. The value of K can be tuned for receiving an optimal operation of the battery energy. For example, if owners want to fully charge the battery, the value of K needs to be increased. Generally, it is set at the average values of electricity prices, in this paper it is chosen as 29.2. The proposed penalty function is basically the opposite value of the cost function, which dynamically penalises the objective function if the battery is not charged optimally from RESs and grid utility. The result from this cost function is demonstrated in Figures 9 and 10. It is observed that the charging and discharging cycles of the battery are similar to the alternative function, but with reduced operational costs as \$ 33.76 for a time horizon of 96 hours. It can be seen from Figure 9 that the storage system discharges its energy to the lowest energy level at time $t = 42$ h, and after that the battery has no activities up to time $t = 47$ h due to lack of renewable power and high cost involvement in charging the battery. Similarly, the battery reaches the height energy level at time $t = 55$ h, and the battery is in an inactive mode until $t = 66$ h due to higher power generation from RESs. It should be pointed out that the formulation takes into account for using the battery energy to send power to

Table 3: Comparison among cost functions in scenario 2.

Cost function	Electricity cost	% Saving
Original (9)	68.68	0
Alternative (10)	62.61	8.84
Proposed (11)	60.82	11.44

loads when power generation is less than power demand rather than selling power to the grid utility during high electricity prices. The most important part of this dynamic penalty function is that it can modify the charging and discharging cycles according to the needs of customers. For example, the battery can be fully charged by tuning the penalty function prior to any forthcoming events, such as cloudy and rainy days, where there is a possibility of the loss of electricity connection. Taking into consideration of such an event, Figure 11 depicts a full charging battery scenario for a predicted event, where the battery always try to maintain full charge, with the expense of electricity cost \$ 38.33, which is still less than the original cost but with maintaining high energy levels all the time periods. A comparative study among different functions is shown in Figure 12 from which it can be seen that the charging/discharging cycles for the original cost function are different from the proposed and alternative ones.

6.2. Scenario 2

Although the wind speed be the same as in Figure 2, the solar irradiation and daily load patterns are changed as in Figures 3b and 4b, respectively, to exhibit the effectiveness of the proposed function. The new solar irradiation generates less power than the previous one in Figure 3a. From Figure 13, it is observed that the battery is charged during low electricity prices and high power generation, and it is discharged during low power generation and high prices. A comparison of the original, alternative and proposed functions in Scenario 2 is demonstrated in Figure 14 from where the electricity costs are tabulated in Table 3. As can be seen from Table 3, the electricity cost for the application of the proposed cost function is \$ 60.82 over a time horizon of 96 hours, while other functions have higher costs than that of the proposed one. It is worth mentioning that the improvement with respect to the alternative cost function is reduced (from 6% to 3% approximately) in Scenario 2 than that of Scenario 1. This is because of variation in power generation over the peak prices. It can be concluded that the proposed cost function is superior to the other functions.

7. Conclusion

This paper proposes a penalty function multiplied with the charging component of the objective function in order to obtain optimal use of battery energy by controlling charging/discharging behaviours. In the proposed function, the constant value can be tuned according to the requirements of the microgrid investors. A metaheuristic algorithm is applied to facilitate the analysis of the cost functions reported in literature and the one proposed here. It is observed that the proposed cost function reduces electricity costs of the community microgrid by around 12% than the original cost function over a time horizon of 96 hours. Numerical results and comparisons are carried out to demonstrate the effectiveness of the proposed function, and it can be concluded that the performance of the proposed cost function is superior to other functions.

340 In the future work, the effectiveness of the proposed cost function will be evaluated in an experiment set up, where the degradation cost of a battery will be taken into account. In addition, a mathematical relationship will be established to accurately determine the k value for different energy level stages.

Acknowledgment

345 This work is supported by the Australian Government Research Training Program (RTP) Scholarship at The University of New South Wales - Canberra, Australia. Md Alamgir Hossain would like to thank The Dhaka University of Engineering & Technology (DUET) for assistance and support of this research.

References

- [1] M. A. Hossain, H. R. Pota, M. J. Hossain, A. M. O. Haruni, Active power management in a low-voltage islanded microgrid, *International Journal of Electrical Power & Energy Systems* 98 (2018) 36–47.
- 350 [2] A. S. Hassan, L. Cipcigan, N. Jenkins, Optimal battery storage operation for pv systems with tariff incentives, *Applied Energy* 203 (2017) 422–441.
- [3] M. A. Hossain, H. R. Pota, A. M. O. Haruni, M. J. Hossain, Dc-link voltage regulation of inverters to enhance microgrid stability during network contingencies, *Electric Power Systems Research* 147 (2017) 233–244.
- 355 [4] R. H. Lasseter, Microgrids, in: *Power Engineering Society Winter Meeting, 2002. IEEE*, Vol. 1, IEEE, 2002, pp. 305–308.
- [5] M. A. Hossain, H. R. Pota, W. Issa, M. J. Hossain, Overview of ac microgrid controls with inverter-interfaced generations, *Energies* 10 (9) (2017) 1300.
- [6] H. Li, A. T. Eseye, J. Zhang, D. Zheng, Optimal energy management for industrial microgrids with high-
360 penetration renewables, *Protection and Control of Modern Power Systems* 2 (1) (2017) 12.
- [7] H. Ibrahim, A. Ilinca, J. Perron, Energy storage systems characteristics and comparisons, *Renewable and sustainable energy reviews* 12 (5) (2008) 1221–1250.
- [8] G. K. Venayagamoorthy, R. K. Sharma, P. K. Gautam, A. Ahmadi, Dynamic energy management system for a smart microgrid, *IEEE transactions on neural networks and learning systems* 27 (8) (2016) 1643–1656.
- 365 [9] Q. Wei, D. Liu, F. L. Lewis, Y. Liu, J. Zhang, Mixed iterative adaptive dynamic programming for optimal battery energy control in smart residential microgrids, *IEEE Transactions on Industrial Electronics* 64 (5) (2017) 4110–4120.
- [10] G. P. Henze, R. H. Dodier, Adaptive optimal control of a grid-independent photovoltaic system, in: *ASME Solar 2002: International Solar Energy Conference*, American Society of Mechanical Engineers, 2002, pp.
370 139–148.

- [11] F. De Angelis, M. Boaro, D. Fuselli, S. Squartini, F. Piazza, Q. Wei, Optimal home energy management under dynamic electrical and thermal constraints, *IEEE Transactions on Industrial Informatics* 9 (3) (2013) 1518–1527.
- [12] A. C. Luna, N. L. Diaz, F. Andrade, M. Graells, J. M. Guerrero, J. C. Vasquez, Economic power dispatch of distributed generators in a grid-connected microgrid, in: *Power Electronics and ECCE Asia (ICPE-ECCE Asia)*, 2015 9th International Conference on, IEEE, 2015, pp. 1161–1168.
- [13] A. C. L. Hernández, N. L. D. Aldana, M. Graells, J. C. V. Quintero, J. M. Guerrero, Mixed-integer-linear-programming-based energy management system for hybrid pv-wind-battery microgrids: Modeling, design, and experimental verification, *IEEE Transactions on Power Electronics* 32 (4) (2017) 2769–2783.
- [14] Y. Choi, H. Kim, Optimal scheduling of energy storage system for self-sustainable base station operation considering battery wear-out cost, *Energies* 9 (6) (2016) 462.
- [15] A. Chaouachi, R. M. Kamel, R. Andoulsi, K. Nagasaka, Multiobjective intelligent energy management for a microgrid, *IEEE Transactions on Industrial Electronics* 60 (4) (2013) 1688–1699.
- [16] Q. Wei, G. Shi, R. Song, Y. Liu, Adaptive dynamic programming-based optimal control scheme for energy storage systems with solar renewable energy, *IEEE Transactions on Industrial Electronics* 64 (7) (2017) 5468–5478.
- [17] S. Teleke, M. E. Baran, S. Bhattacharya, A. Q. Huang, Rule-based control of battery energy storage for dispatching intermittent renewable sources, *IEEE Transactions on Sustainable Energy* 1 (3) (2010) 117–124.
- [18] Y. Riffonneau, S. Bacha, F. Barruel, S. Ploix, Optimal power flow management for grid connected pv systems with batteries, *IEEE Transactions on Sustainable Energy* 2 (3) (2011) 309–320.
- [19] O. Penangsang, A. Soeprijanto, A. A. Fitriana, E. S. Ningrum, Operation optimization stand-alone micro-grid using firefly algorithm considering lifetime characteristics of battery, in: *Intelligent Technology and Its Applications (ISITIA)*, 2016 International Seminar on, IEEE, 2016, pp. 565–570.
- [20] B. V. Mbuwir, F. Ruelens, F. Spiessens, G. Deconinck, Battery energy management in a microgrid using batch reinforcement learning, *Energies* 10 (11) (2017) 1846.
- [21] T. Huang, D. Liu, Residential energy system control and management using adaptive dynamic programming, in: *Neural Networks (IJCNN)*, The 2011 International Joint Conference on, IEEE, 2011, pp. 119–124.
- [22] G. Shi, Q. Wei, D. Liu, Optimization of electricity consumption in office buildings based on adaptive dynamic programming, *Soft Computing* 21 (21) (2017) 6369–6379.
- [23] H. Borhanazad, S. Mekhilef, V. G. Ganapathy, M. Modiri-Delshad, A. Mirtaheri, Optimization of micro-grid system using mopso, *Renewable Energy* 71 (2014) 295–306.
- [24] C. Justus, Wind energy statistics for large arrays of wind turbines (new england and central us regions), *Solar Energy* 20 (5) (1978) 379–386.

- 405 [25] S. Rehman, N. M. Al-Abadi, Wind shear coefficients and energy yield for dhahran, saudi arabia, *Renewable Energy* 32 (5) (2007) 738–749.
- [26] R. Farrugia, The wind shear exponent in a mediterranean island climate, *Renewable Energy* 28 (4) (2003) 647–653.
- [27] B. S. Borowy, Z. M. Salameh, Optimum photovoltaic array size for a hybrid wind/pv system, *IEEE Transactions on energy conversion* 9 (3) (1994) 482–488.
- 410 [28] W. Xiao, M. G. Lind, W. G. Dunford, A. Capel, Real-time identification of optimal operating points in photovoltaic power systems, *IEEE Transactions on Industrial Electronics* 53 (4) (2006) 1017–1026.
- [29] C. Darras, S. Sailer, C. Thibault, M. Muselli, P. Poggi, J. Hoguet, S. Melscoet, E. Pinton, S. Grehant, F. Gailly, et al., Sizing of photovoltaic system coupled with hydrogen/oxygen storage based on the oriente
- 415 model, *International Journal of Hydrogen Energy* 35 (8) (2010) 3322–3332.
- [30] D. Fuselli, F. De Angelis, M. Boaro, S. Squartini, Q. Wei, D. Liu, F. Piazza, Action dependent heuristic dynamic programming for home energy resource scheduling, *International Journal of Electrical Power & Energy Systems* 48 (2013) 148–160.
- [31] A. Bakirtzis, P. Dokopoulos, Short term generation scheduling in a small autonomous system with uncon-
- 420 ventional energy sources, *IEEE Transactions on power systems* 3 (3) (1988) 1230–1236.
- [32] D. Liu, Y. Xu, Q. Wei, X. Liu, Residential energy scheduling for variable weather solar energy based on adaptive dynamic programming, *IEEE/CAA Journal of Automatica Sinica* 5 (1) (2018) 36–46.
- [33] ComEd, USA, <http://www.thewattspot.com/>.
- [34] M. Boaro, D. Fuselli, F. De Angelis, D. Liu, Q. Wei, F. Piazza, Adaptive dynamic programming algorithm
- 425 for renewable energy scheduling and battery management, *Cognitive Computation* 5 (2) (2013) 264–277.
- [35] G. Shi, Q. Wei, D. Liu, An adaptive dynamic programming based method for optimization of electricity consumption in office buildings, in: *Neural Networks (IJCNN), 2016 International Joint Conference on*, IEEE, 2016, pp. 4551–4556.
- [36] S. Squartini, M. Boaro, F. De Angelis, D. Fuselli, F. Piazza, Optimization algorithms for home energy
- 430 resource scheduling in presence of data uncertainty, in: *Intelligent Control and Information Processing (ICICIP), 2013 Fourth International Conference on*, IEEE, 2013, pp. 323–328.
- [37] N. Gudi, L. Wang, V. Devabhaktuni, A demand side management based simulation platform incorporating heuristic optimization for management of household appliances, *International Journal of Electrical Power & Energy Systems* 43 (1) (2012) 185–193.
- 435 [38] H. P. Gavin, J. T. Scruggs, Constrained optimization using lagrange multipliers, CEE 201L. Duke University.
- [39] J. Kennedy, R. Eberhart, C. 1995. particle swarm optimization, in: *IEEE International Conference on Neural Networks (Perth, Australia)*, IEEE Service Center, Piscataway, NJ, pp. 1942–1948.

- [40] R. Poli, J. Kennedy, T. Blackwell, Particle swarm optimization, *Swarm intelligence* 1 (1) (2007) 33–57.
- 440 [41] M. Clerc, J. Kennedy, The particle swarm-explosion, stability, and convergence in a multidimensional complex space, *IEEE transactions on Evolutionary Computation* 6 (1) (2002) 58–73.
- [42] T. Huang, D. Liu, A self-learning scheme for residential energy system control and management, *Neural Computing and Applications* 22 (2) (2013) 259–269.