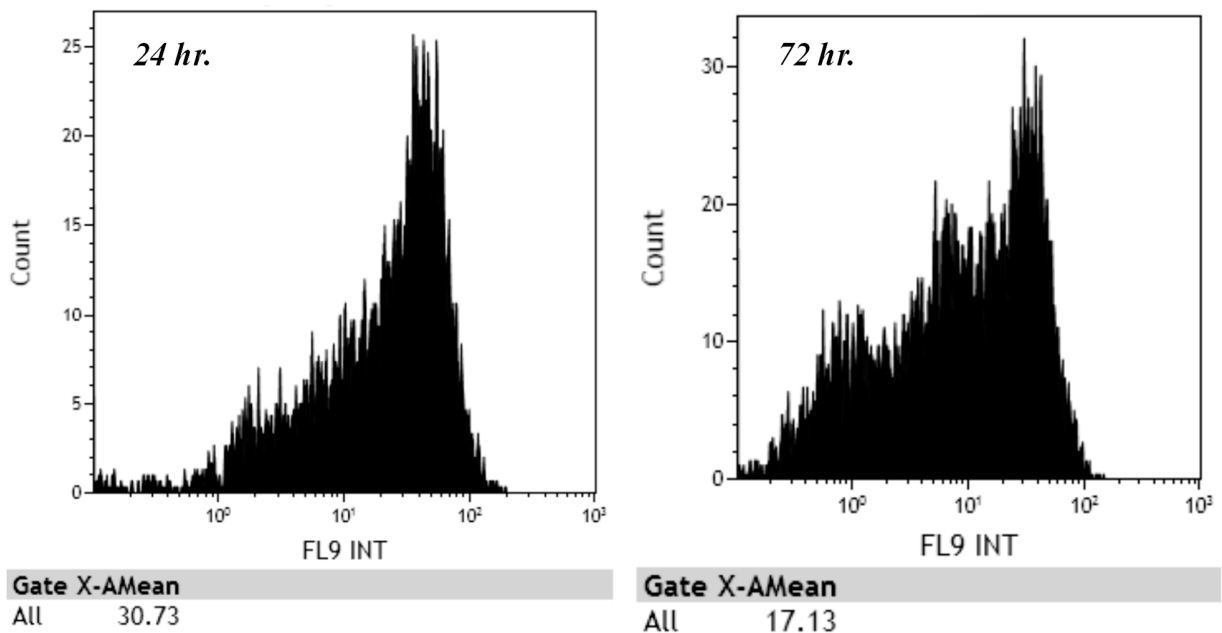


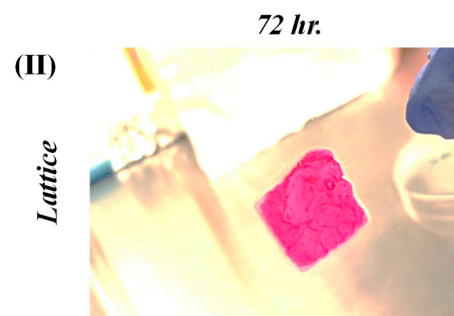
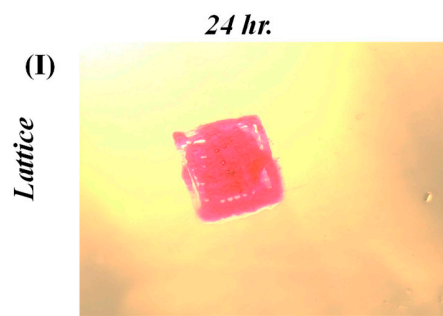
Supplementary Information

A comparative study of a 3D bioprinted gelatin-based lattice and rectangular-sheet structures

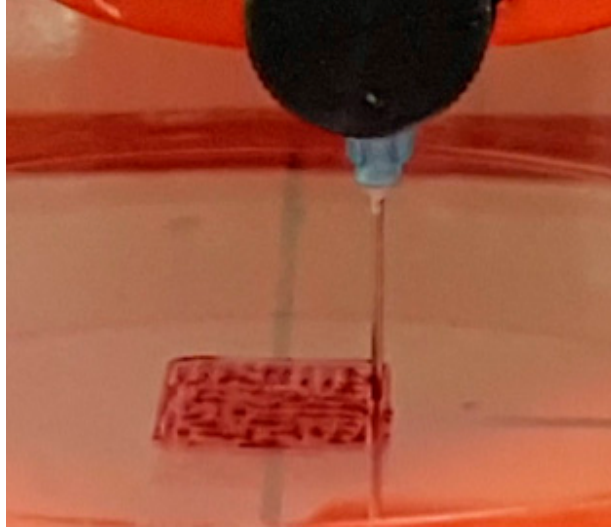
Shweta Anil Kumar, Nishat Tasnim, Erick Dominguez, Shane C. Allen, Laura Suggs, Yoshihiro Ito, Binata Joddar



Supplementary Figure 1. FACS analysis of CTV pre-stained control cells not bioprinted, but cultured in 2D tissue culture treated plastic wells for 24 (left) and 72 hr. (right) respectively. FL9 INT on the Y-axis corresponds to the 'fluorescent dye intensity' in both the figures.



Supplementary Figure 2. Shown above in (I) and (II) are cell-laden lattice constructs. In (III) and (IV) are cell-laden rectangular-sheet constructs. (I) and (III) were acquired after 24 hours of culture. (II) and (IV) were acquired after 72 hours of culture.



Supplementary Figure 3. Shown above is a lattice structure being printed, depicting horizontal and vertical lines which is believed to render macro-porosity to the structure.