

Supplementary figures list:

Figure S1. CV curve of the NiFe sample at 100 °C

Figure S2. RDE curves of 0.125 and 0.25 mg cm⁻² loadings of NiFe samples calcined at different temperature in 0.1 M KOH with 5 mV s⁻¹ at different rotation rates (400-2500 rpm)

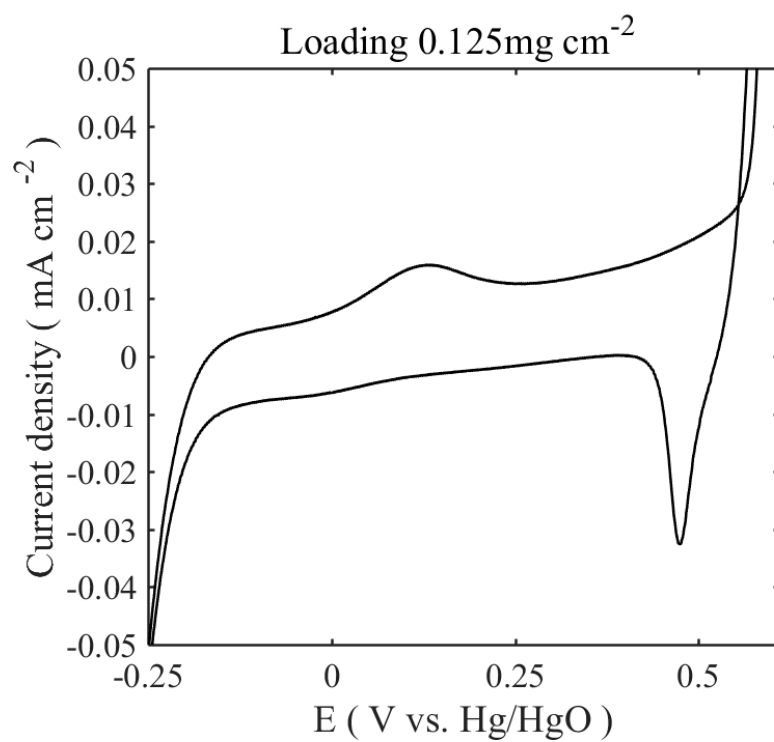
Figure S3. Electrochemical stability of Ni Fe oxide calcined at different temperature with three different mass loadings

Figure S4. Raman spectra of the different samples a) 100-250 °C; b) 450-600 °C

25 Supplementary figures:

26 Figure S1. CV curve of the NiFe sample at 100 °C

27



28

29

30

31

32

33

34

35

36

Figure S2. RDE curves of 0.125 and 0.25 mg cm⁻² loadings of NiFe samples calcined at different temperature in 0.1 M KOH with 5 mV s⁻¹ at different rotation rates (400-2500 rpm)

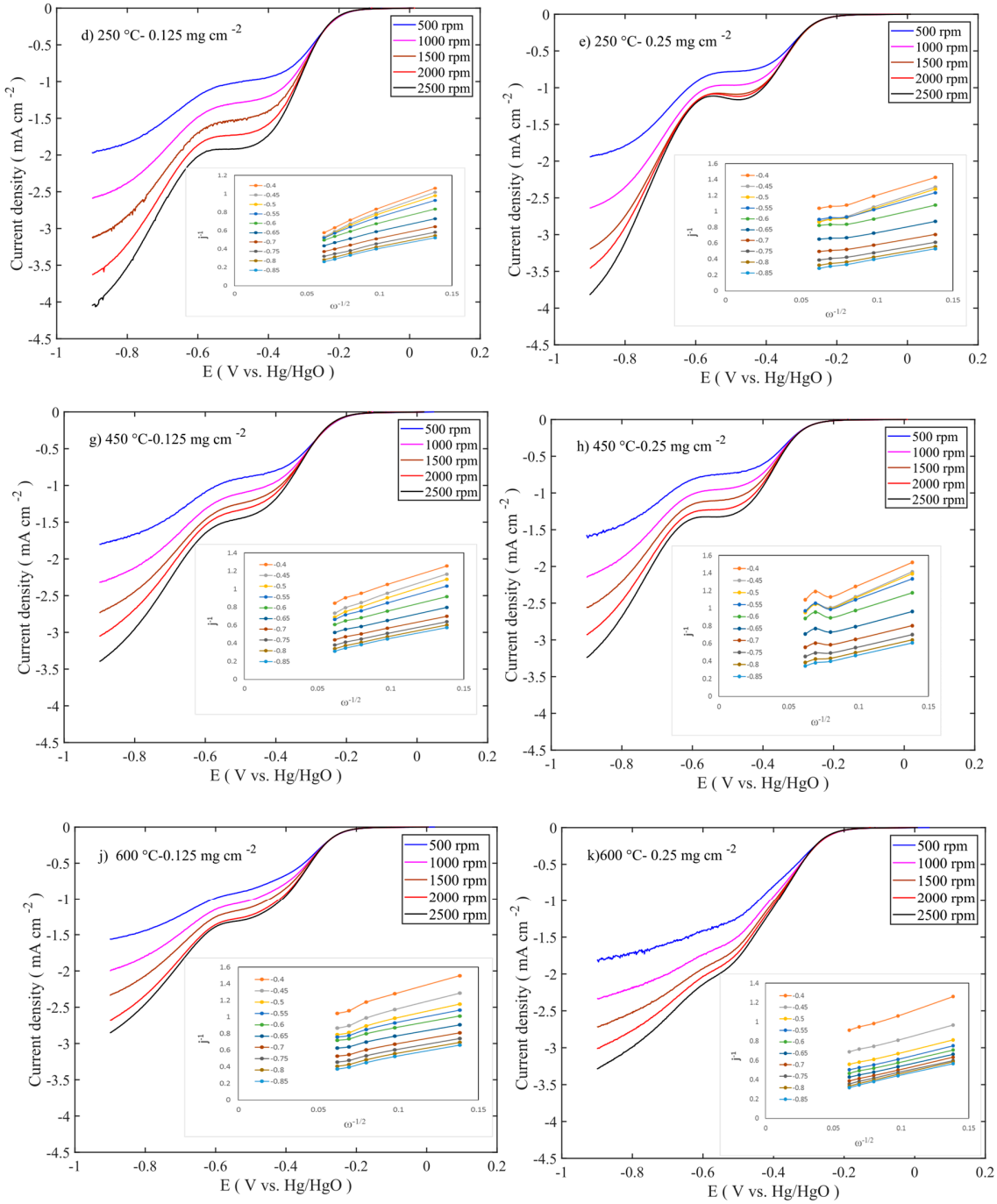
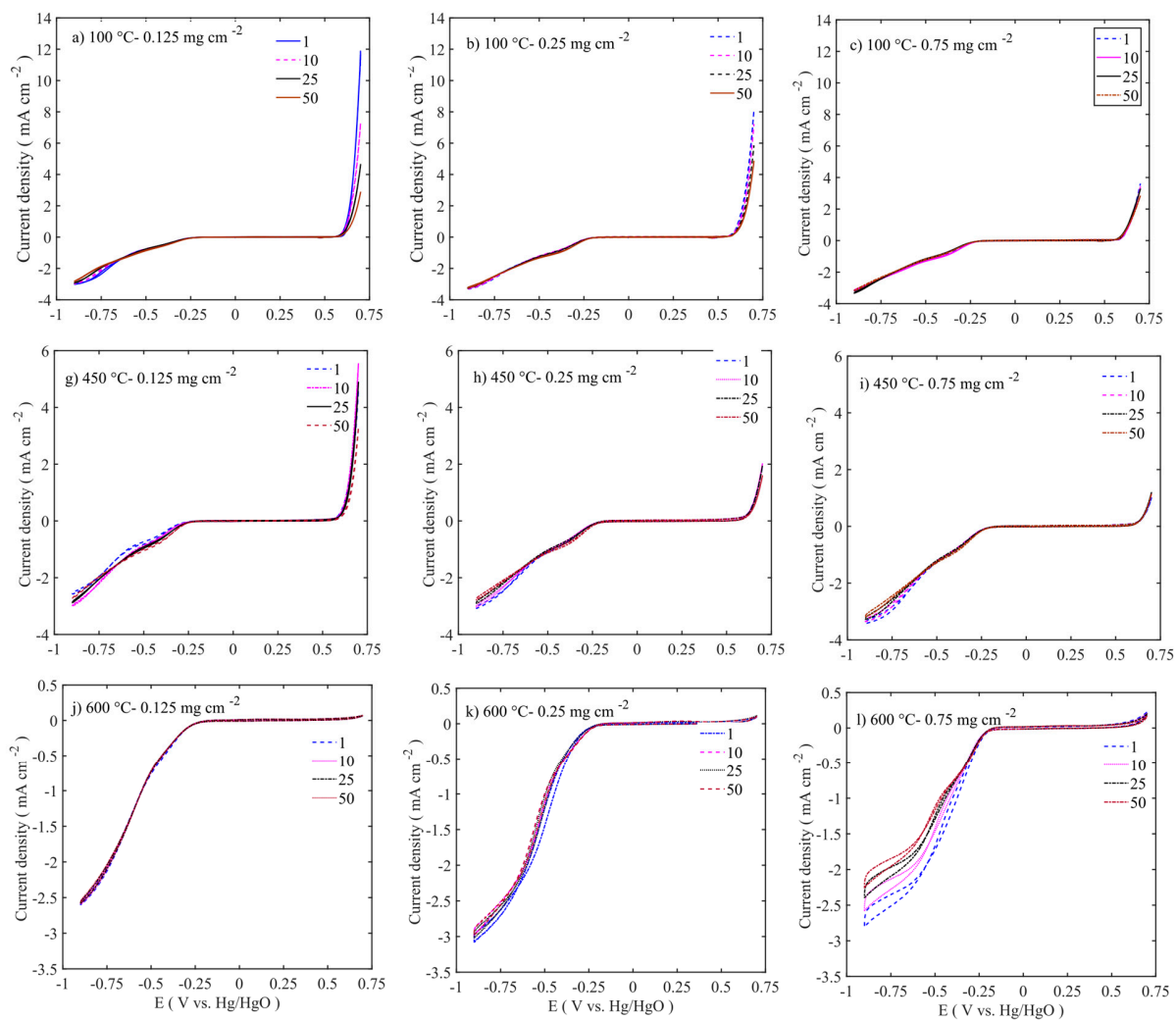
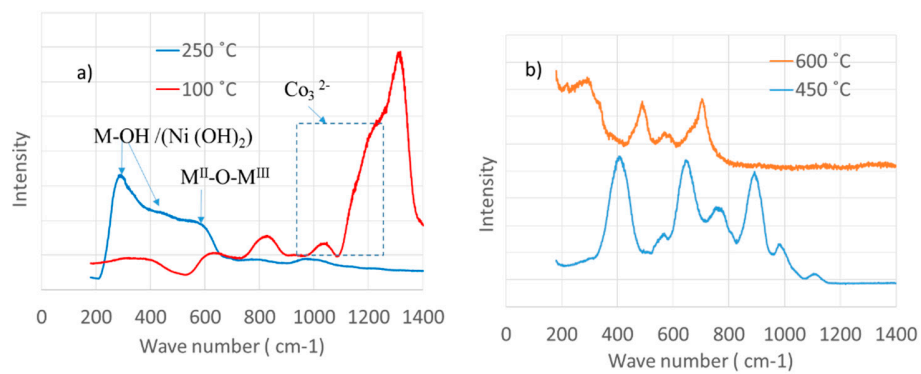


Figure S3. Electrochemical stability of Ni Fe oxide calcined at different temperature with three different mass loadings



51 Figure S4. Raman spectra of the different samples a) 100-250 °C; b) 450-600 °C

52



53