

Supplementary data

Synthesis, biological evaluation and molecular docking studies of the 7-acetamide-substituted 2-aryl-5-bromo-3-trifluoroacetylindoles as potential inhibitors of tubulin polymerisation

M.J. Mphahlele, N. Parbhoo

Figure S1: ^1H - and ^{13}C -NMR spectra of compounds **2a-d**, **3a-d**, **4a-d** and **5a-h**

Figure S2: Cytotoxicity of compounds **2a-d**, **4a-d** and **5a-h** against A549 and HeLa cells

Figure S3: Dose response curves for **5e-h** against the A549 and HeLa cells

Figure S4: Spread sheet for statistical analysis which contains p values for each test

Figure S1: ^1H - and ^{13}C -NMR spectra of compounds 2a-d, 3a-d, 4a-d and 5a-h

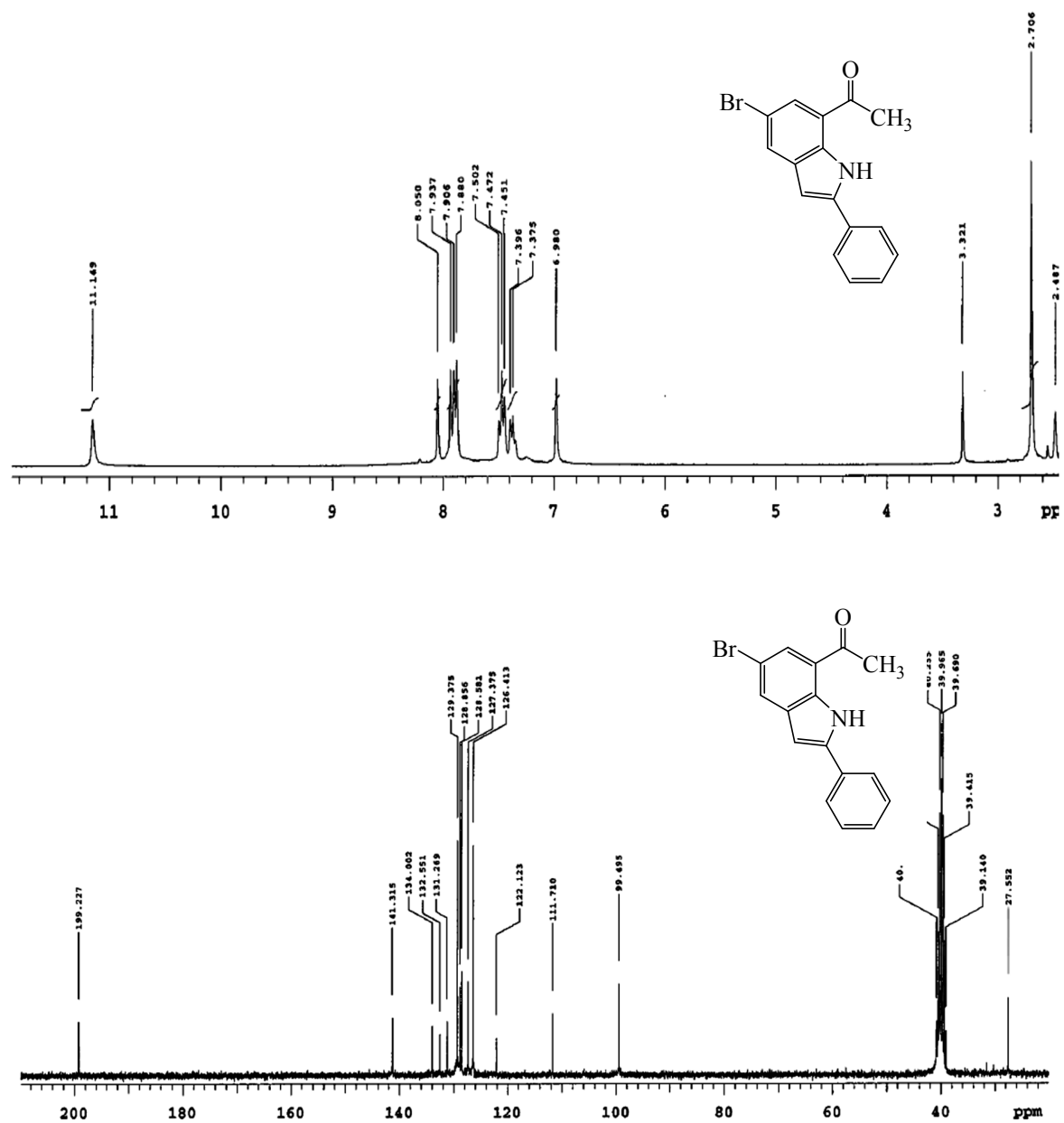


Figure S1.1: ^1H - and ^{13}C -NMR spectra of 2a in $\text{DMSO-}d_6$ at 300 MHz and 75 MHz, respectively.

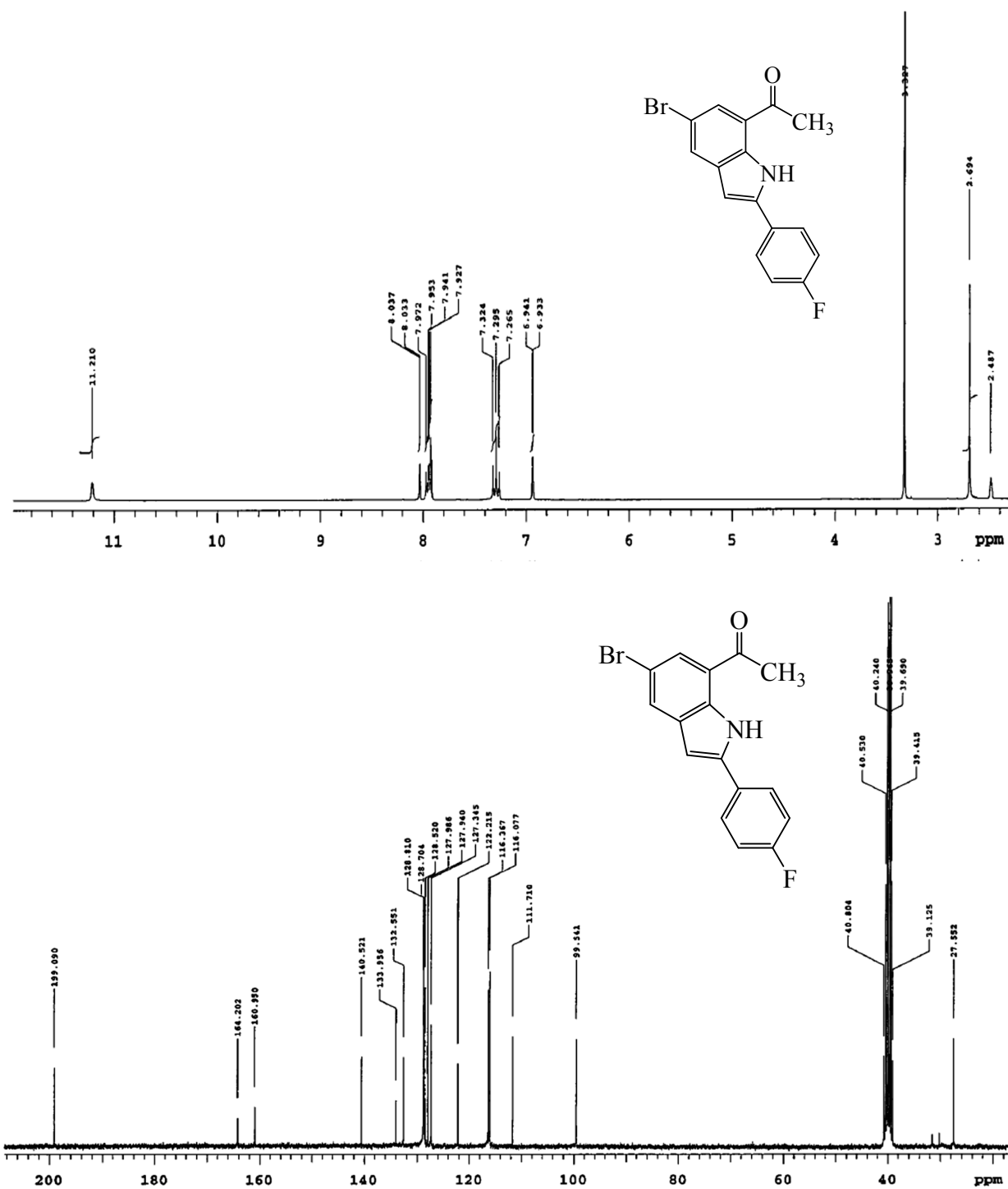


Figure S1.2: ¹H- and ¹³C-NMR spectra of **2b** in DMSO-*d*₆ at 300 MHz and 75 MHz, respectively.

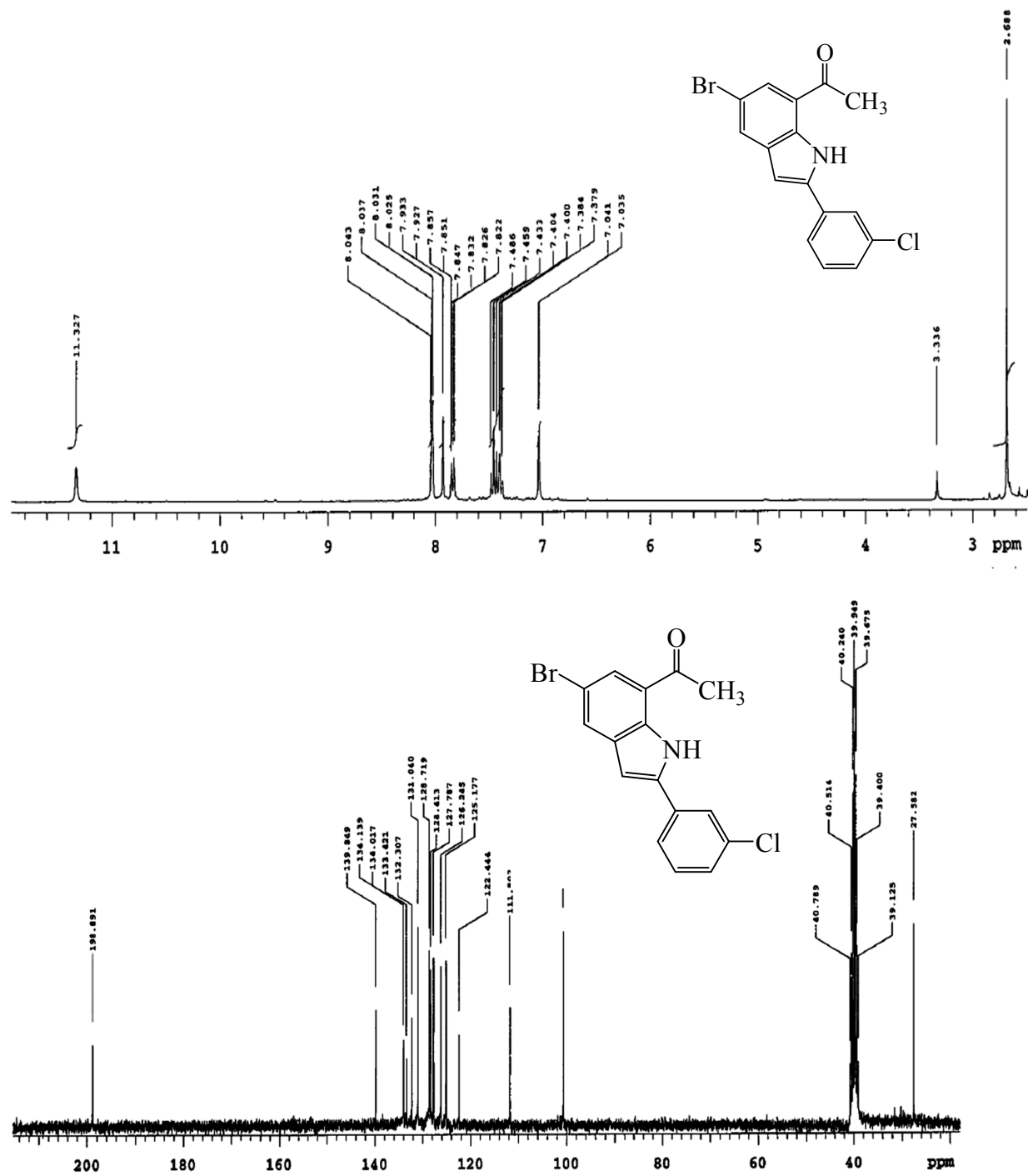


Figure S1.3: ¹H- and ¹³C-NMR spectra of **2c** in DMSO-*d*₆ at 300 MHz and 75 MHz, respectively.

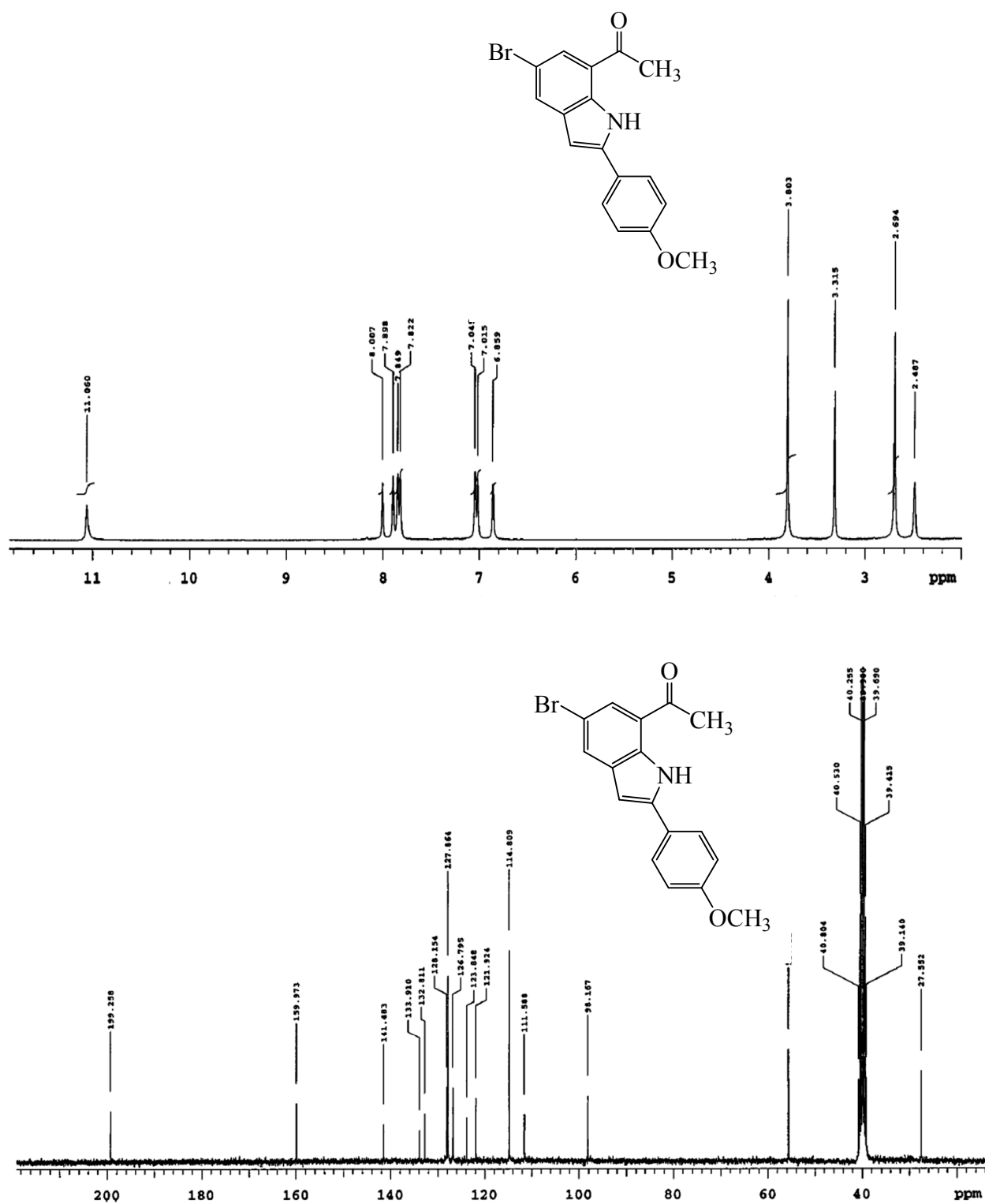


Figure S1.4: ¹H- and ¹³C-NMR spectra of **2d** in DMSO-*d*₆ at 300 MHz and 75 MHz, respectively.

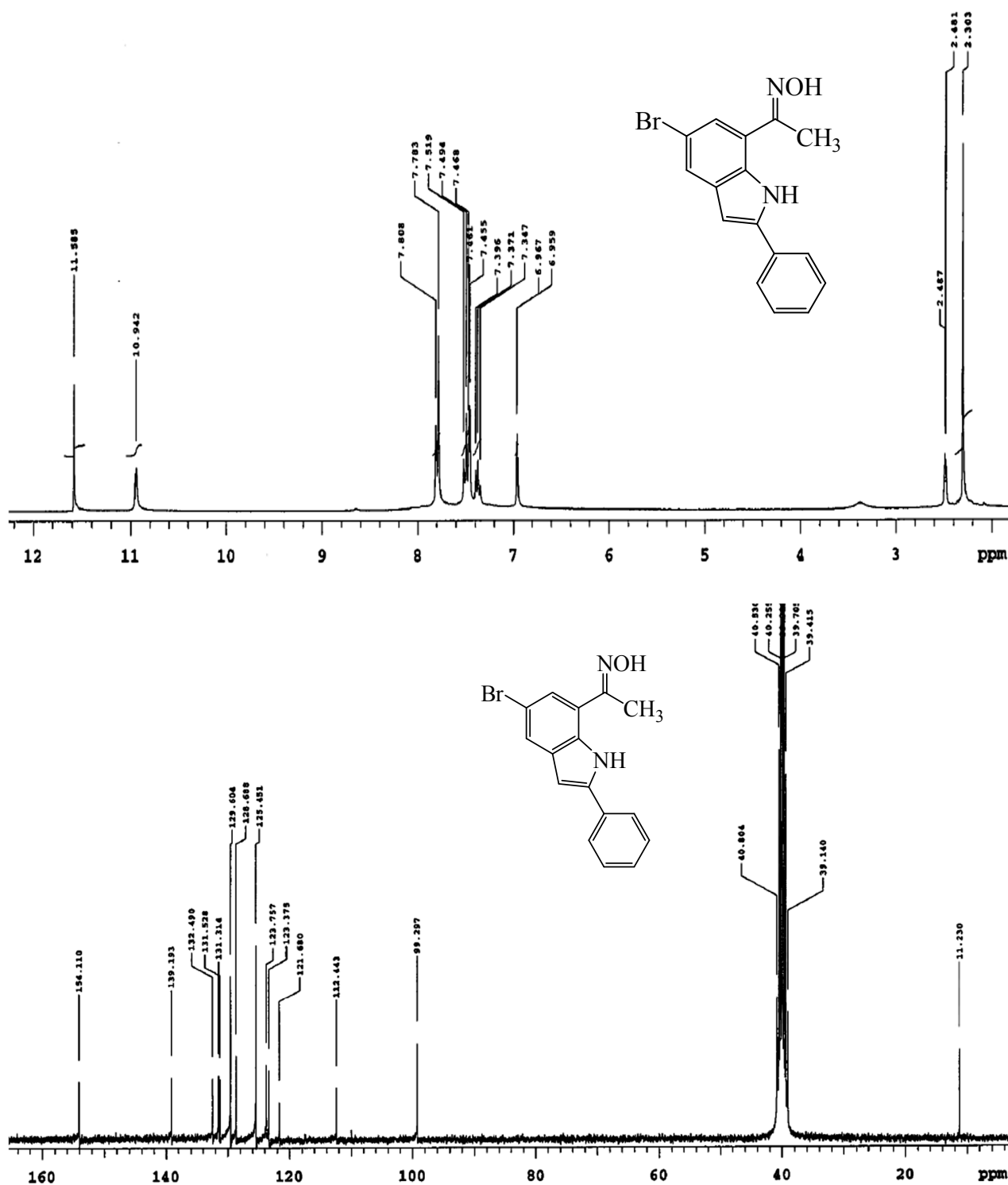


Figure S1.5: ¹H- and ¹³C-NMR spectra of 3a in DMSO-*d*₆ at 300 MHz and 75 MHz, respectively.

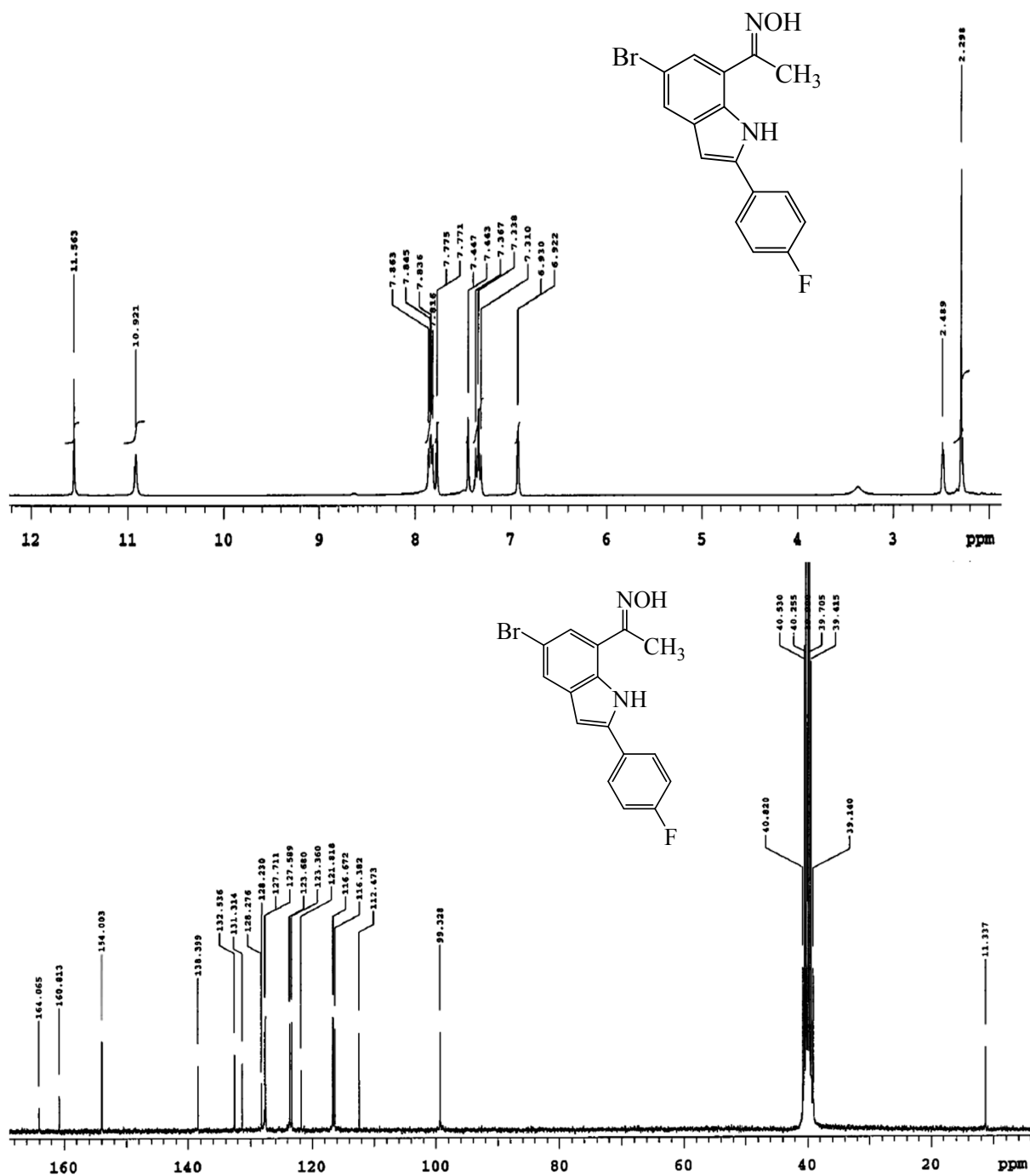


Figure S1.6: ¹H- and ¹³C-NMR spectra of **3b** in DMSO-*d*₆ at 300 MHz and 75 MHz, respectively.

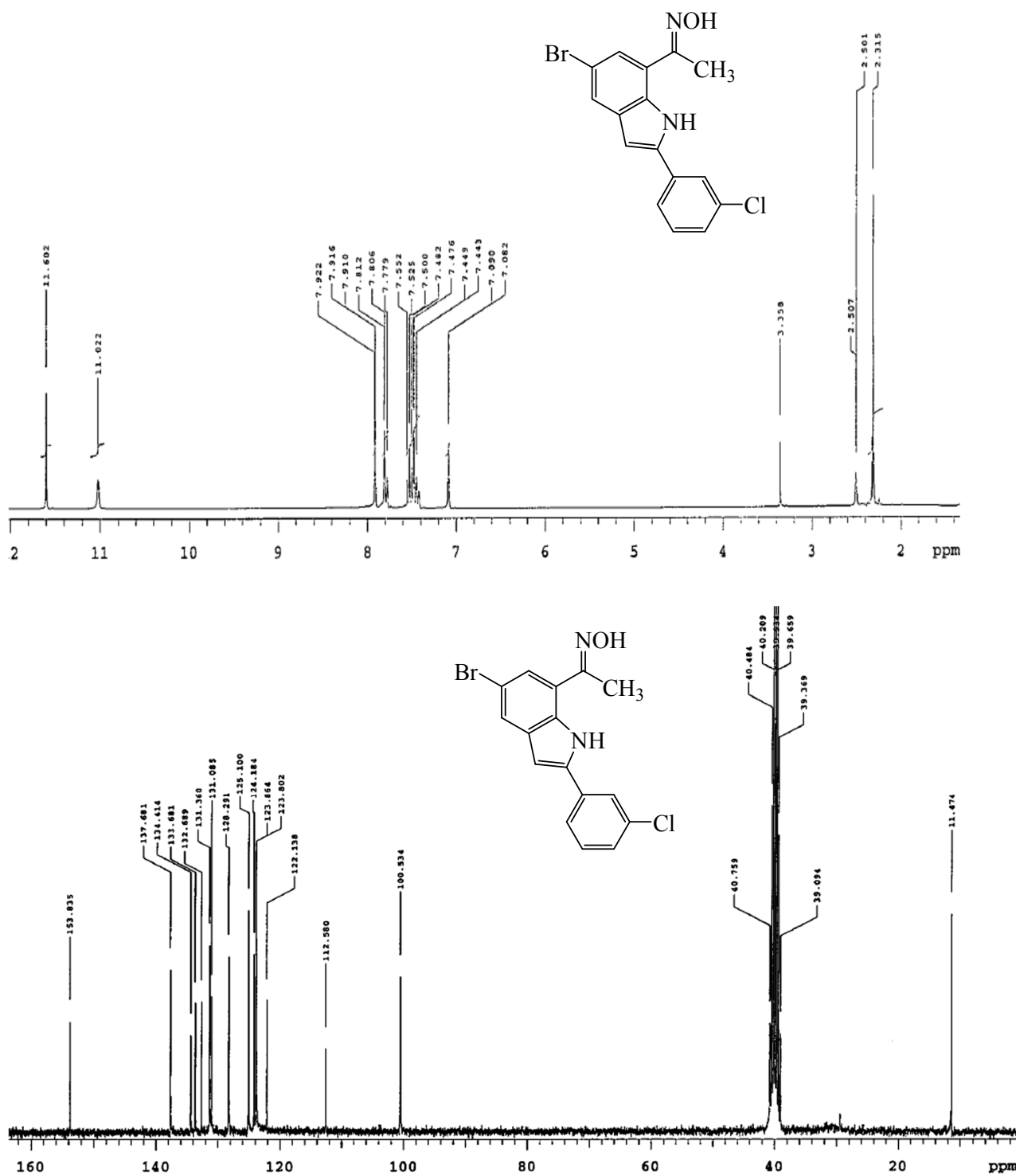


Figure S1.7: ¹H- and ¹³C-NMR spectra of **3c** in DMSO-*d*₆ at 300 MHz and 75 MHz, respectively.

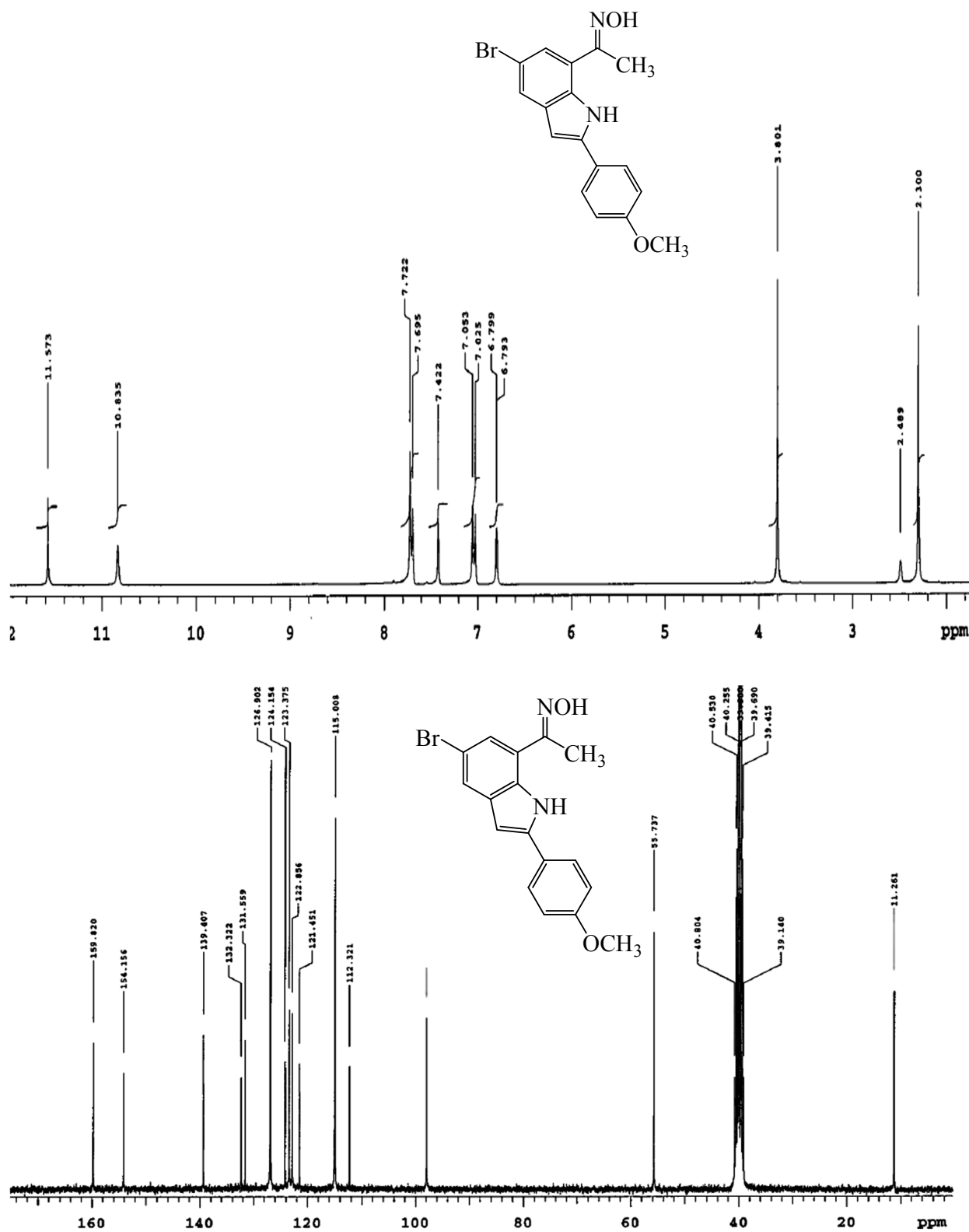


Figure S1.8: ¹H- and ¹³C-NMR spectra of **3d** in DMSO-*d*₆ at 300 MHz and 75 MHz, respectively.

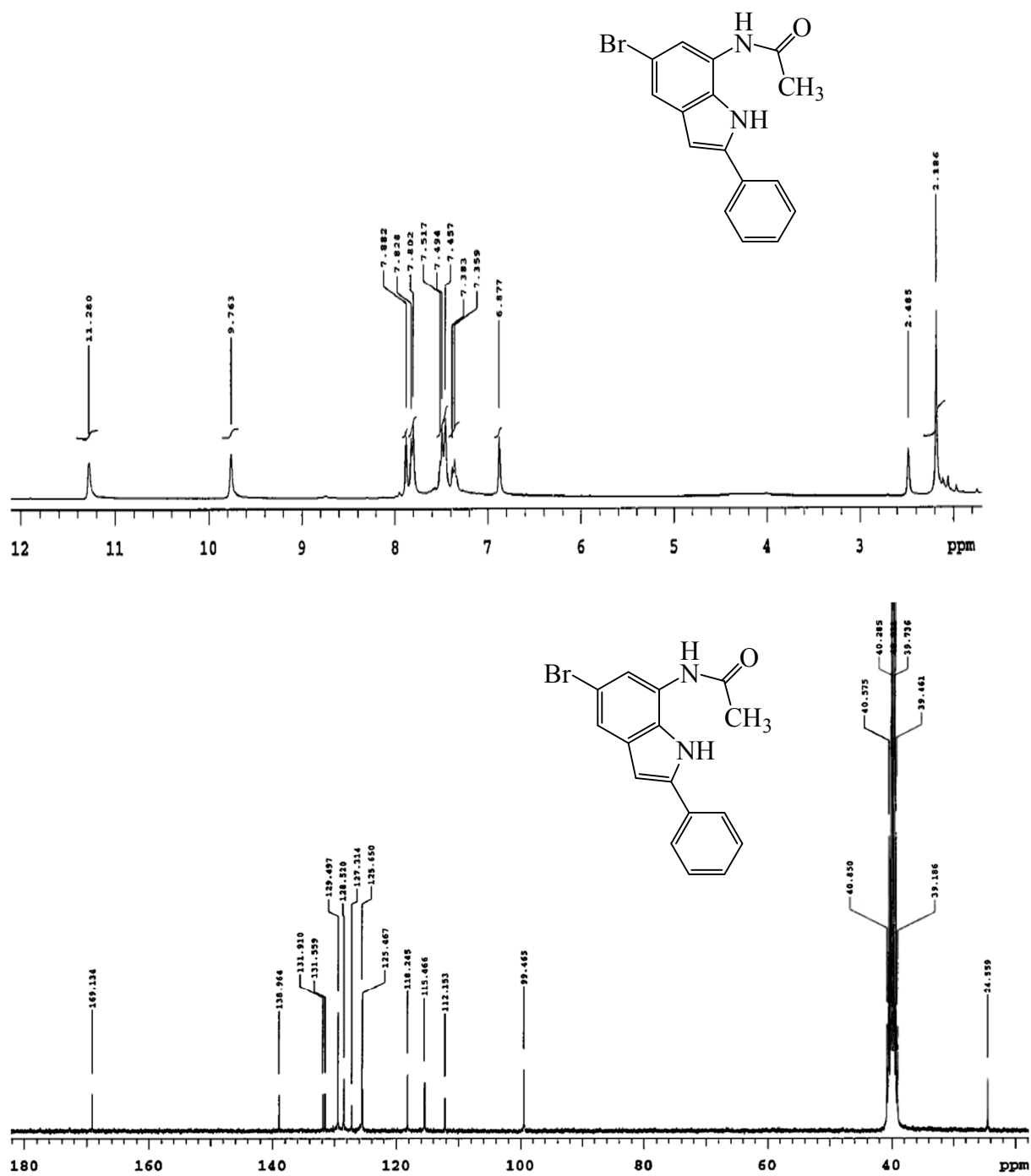


Figure S1.9: ¹H- and ¹³C-NMR spectra of **4a** in DMSO-*d*₆ at 300 MHz and 75 MHz, respectively.

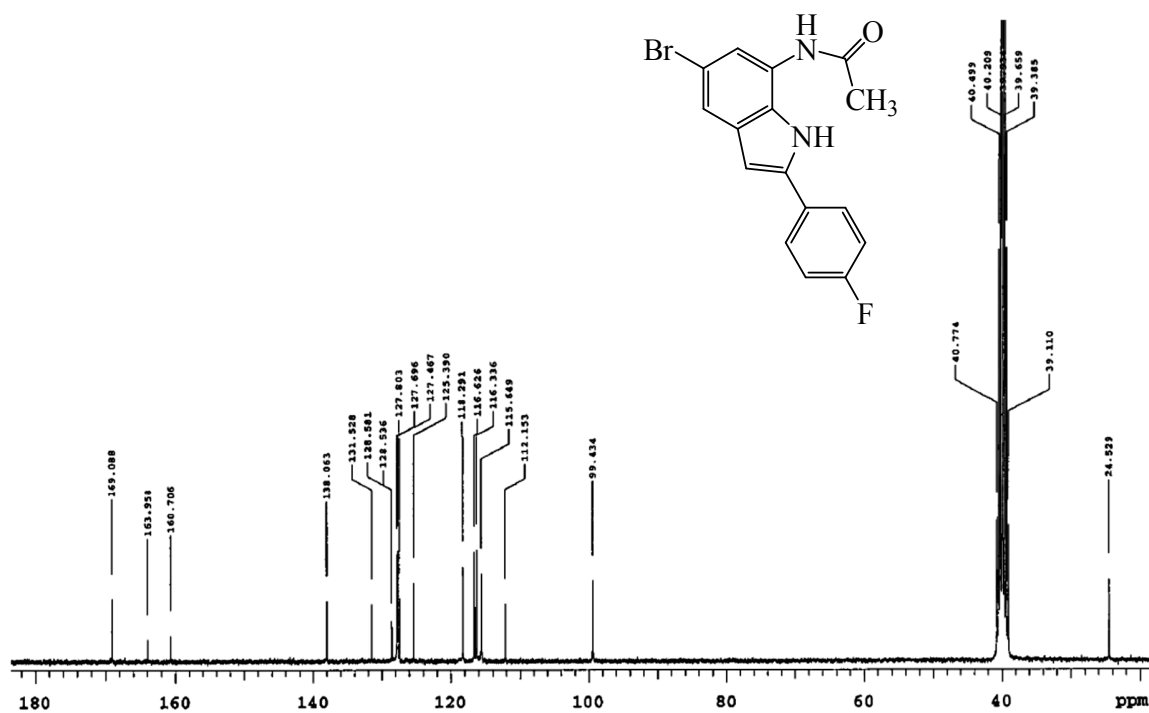
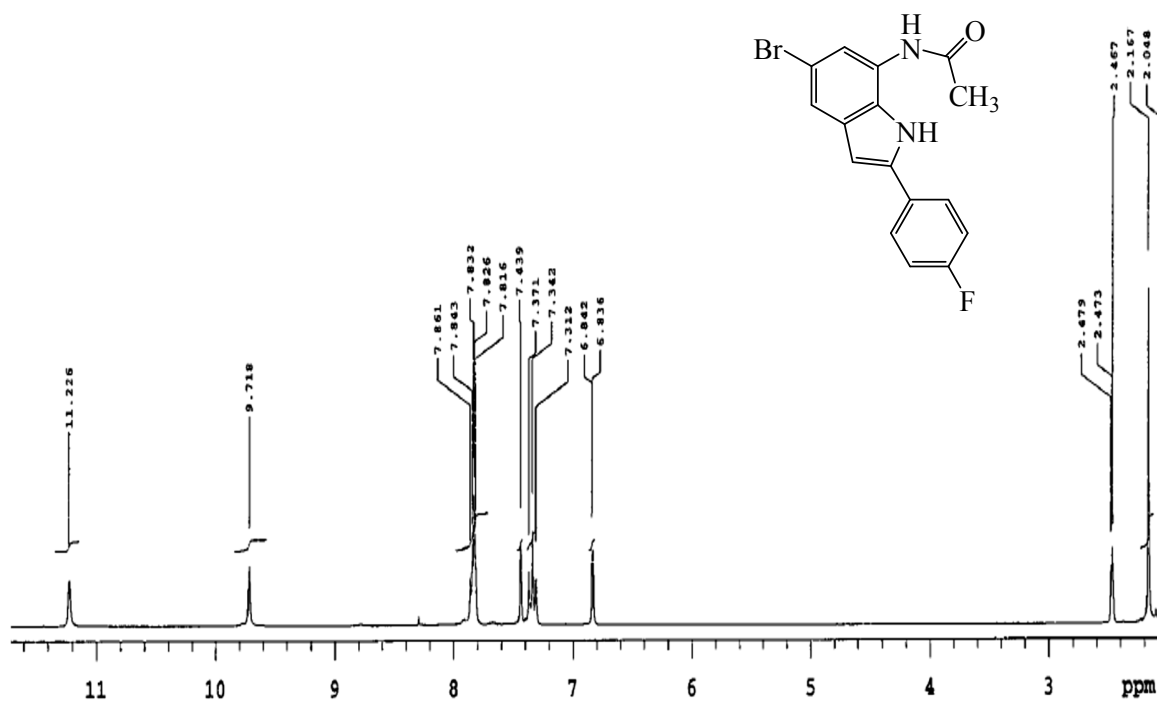


Figure S1.10: ¹H- and ¹³C-NMR spectra of **4b** in DMSO-*d*₆ at 300 MHz and 75 MHz, respectively.

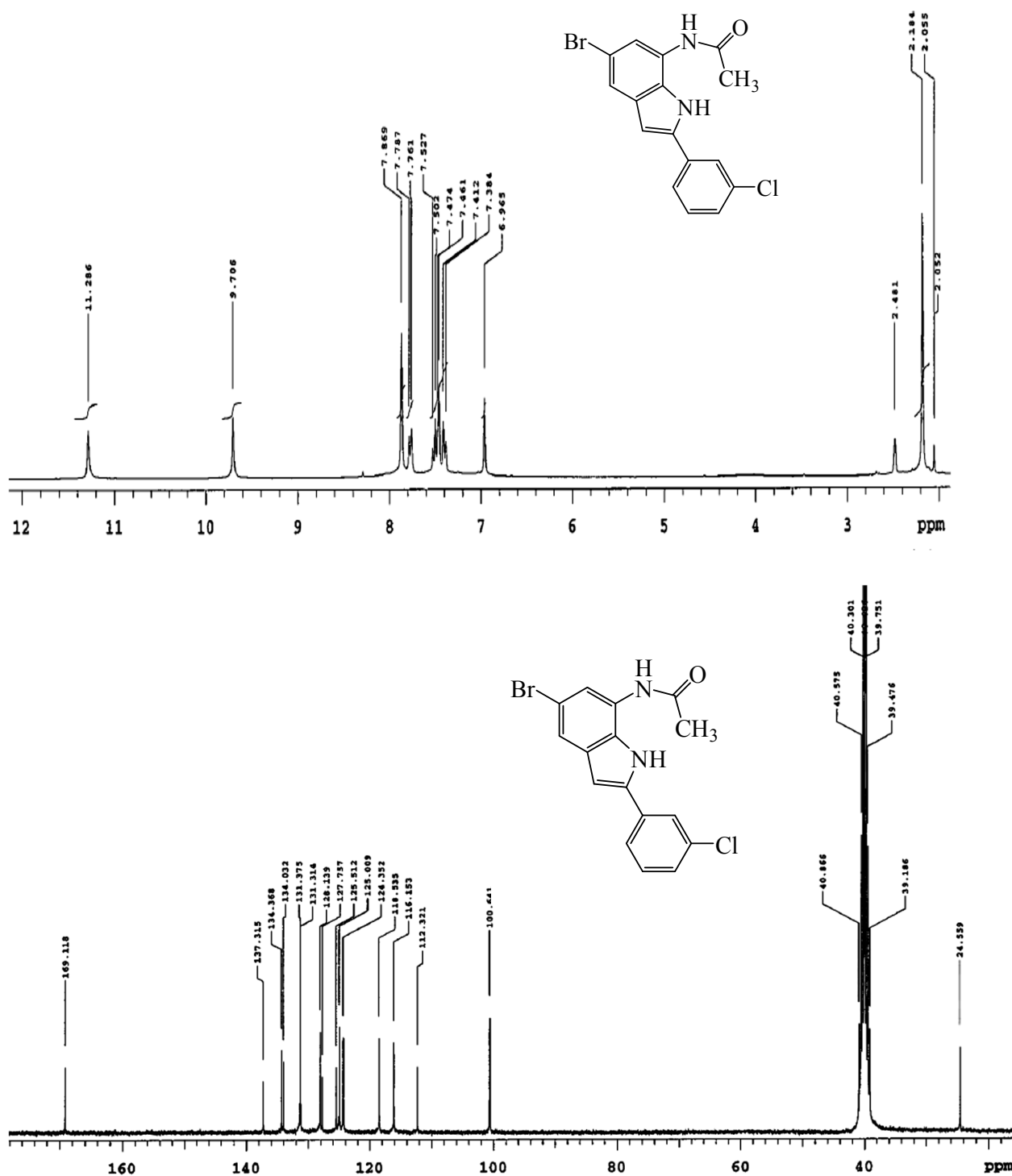


Figure S1.11: ¹H- and ¹³C-NMR spectra of **4c** in DMSO-*d*₆ at 300 MHz and 75 MHz, respectively.

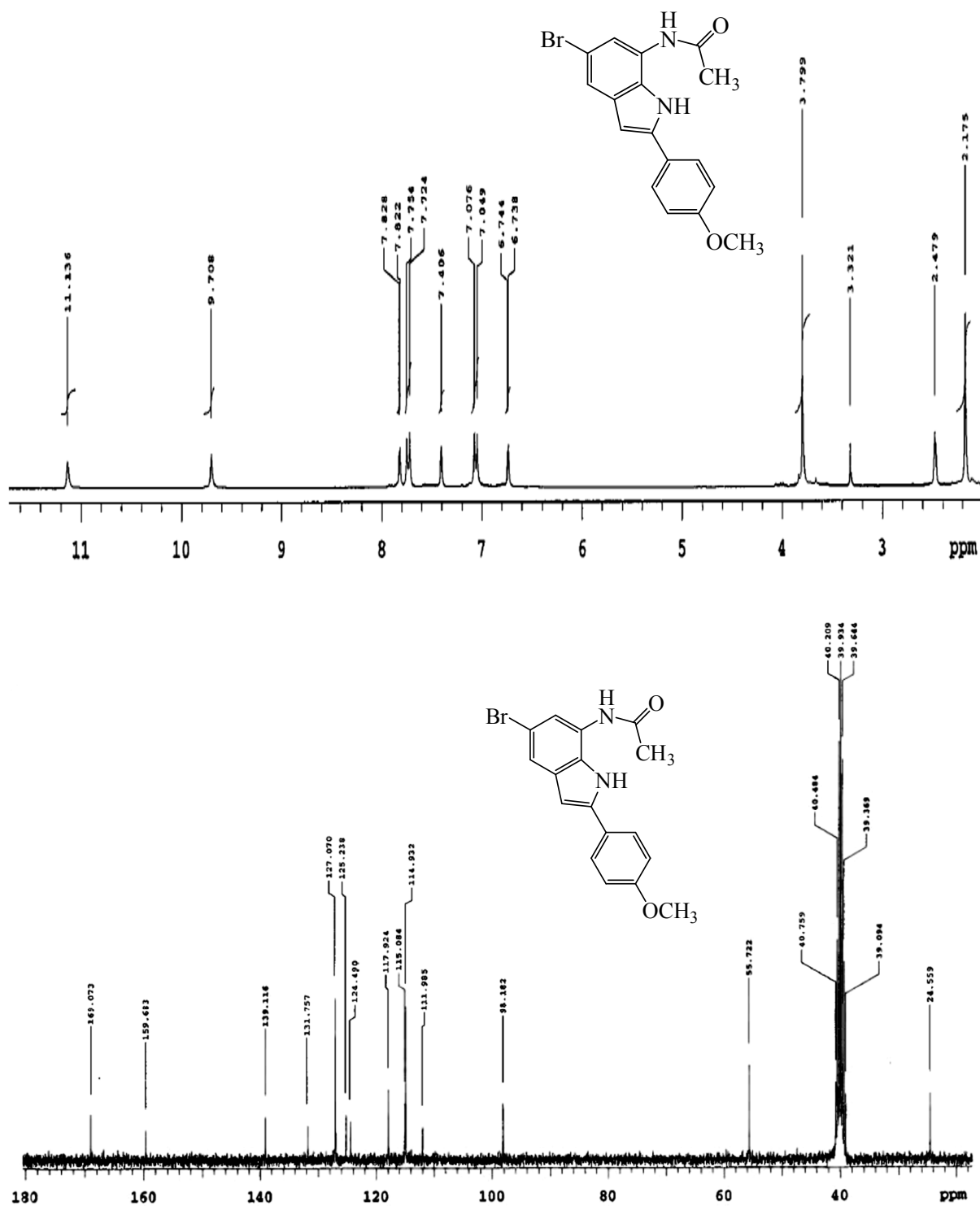


Figure S1.12: ¹H- and ¹³C-NMR spectra of **4d** in DMSO-*d*₆ at 300 MHz and 75 MHz, respectively.

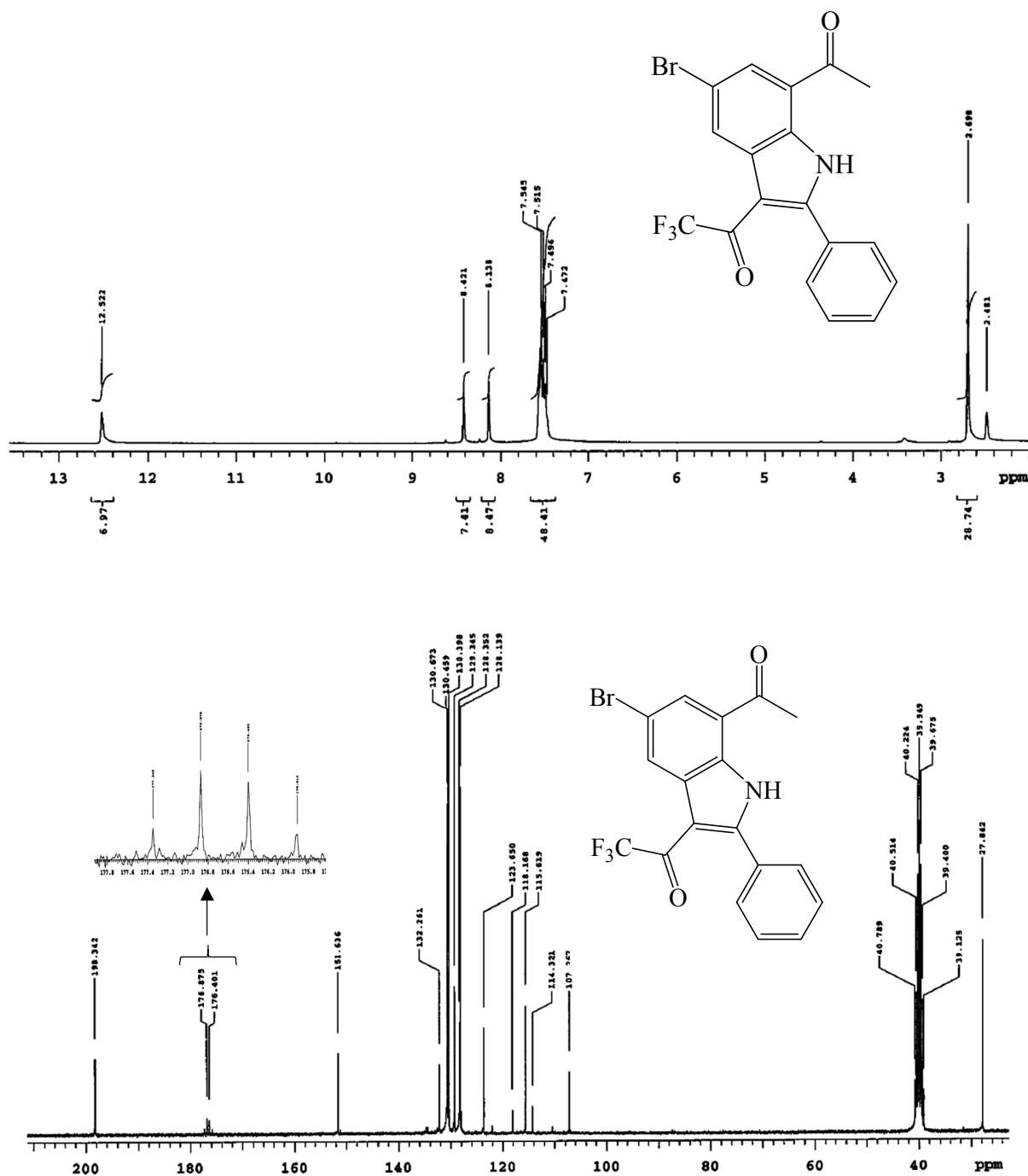


Figure S1.13: ¹H- and ¹³C-NMR spectra of **5a** in DMSO-*d*₆ at 300 MHz and 75 MHz, respectively.

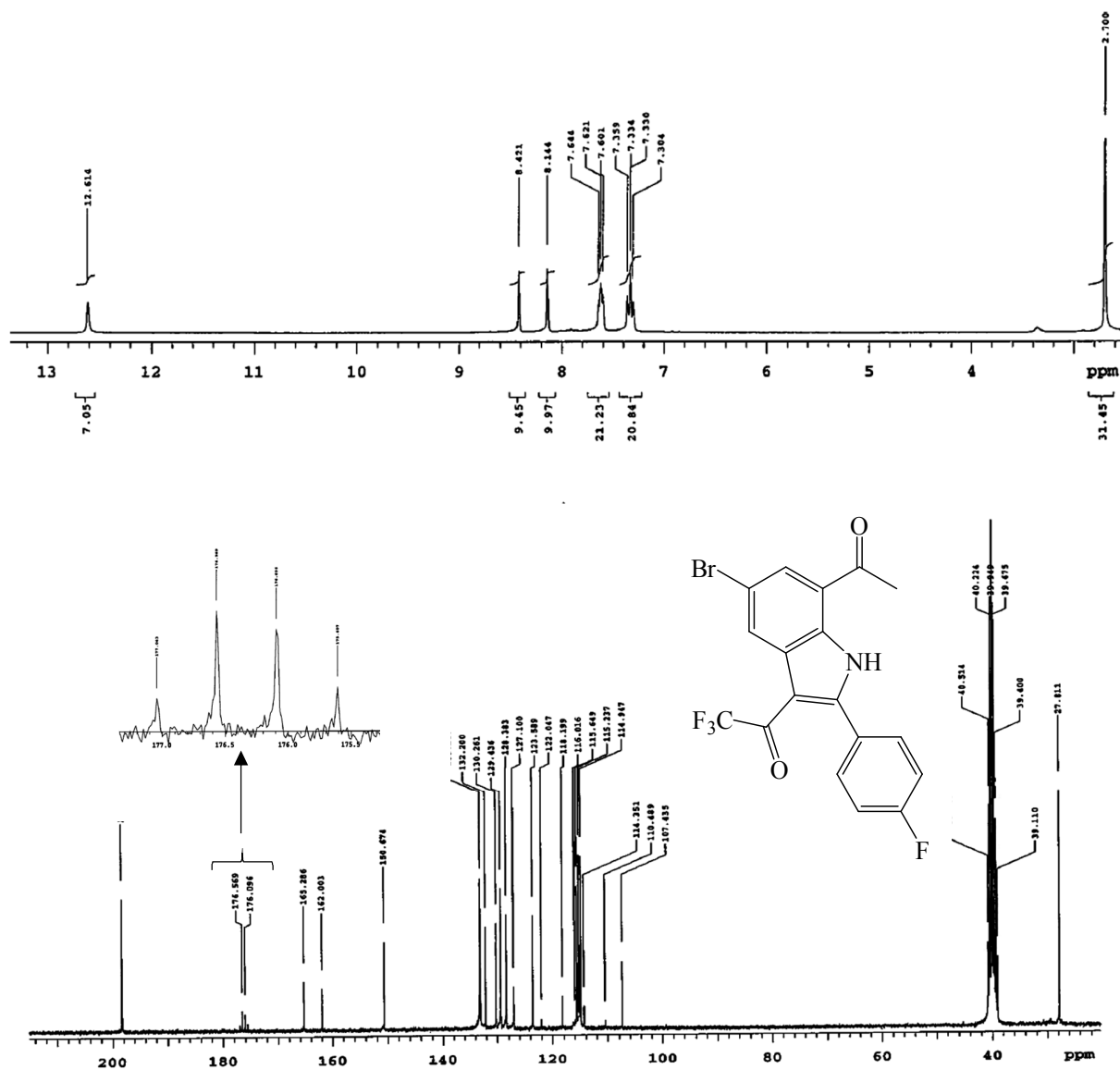


Figure S1.14: ¹H- and ¹³C-NMR spectra of **5b** in DMSO-*d*₆ at 300 MHz and 75 MHz, respectively.

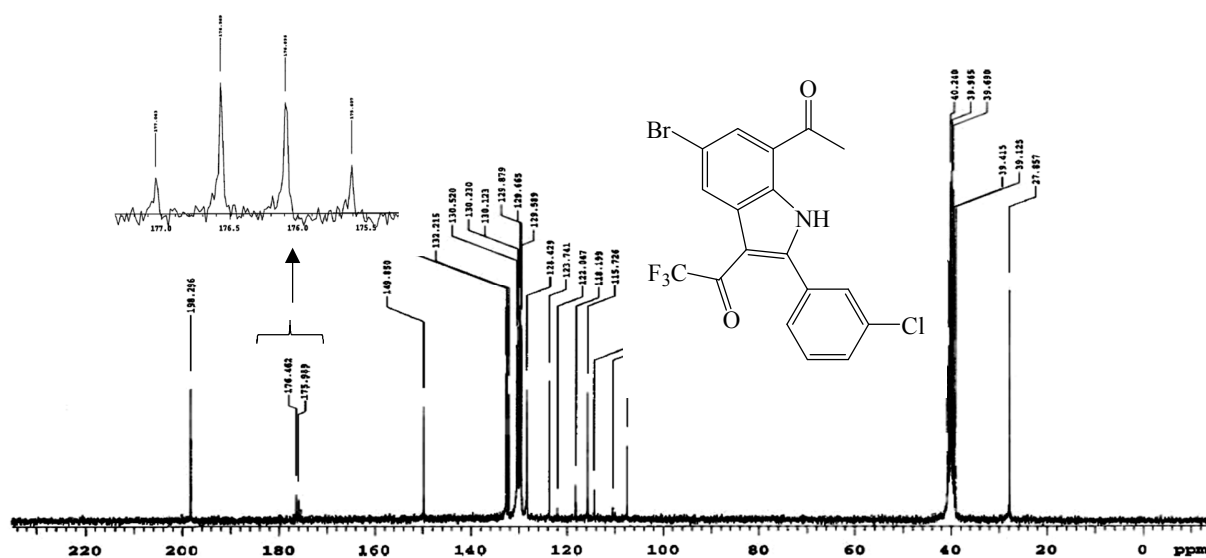
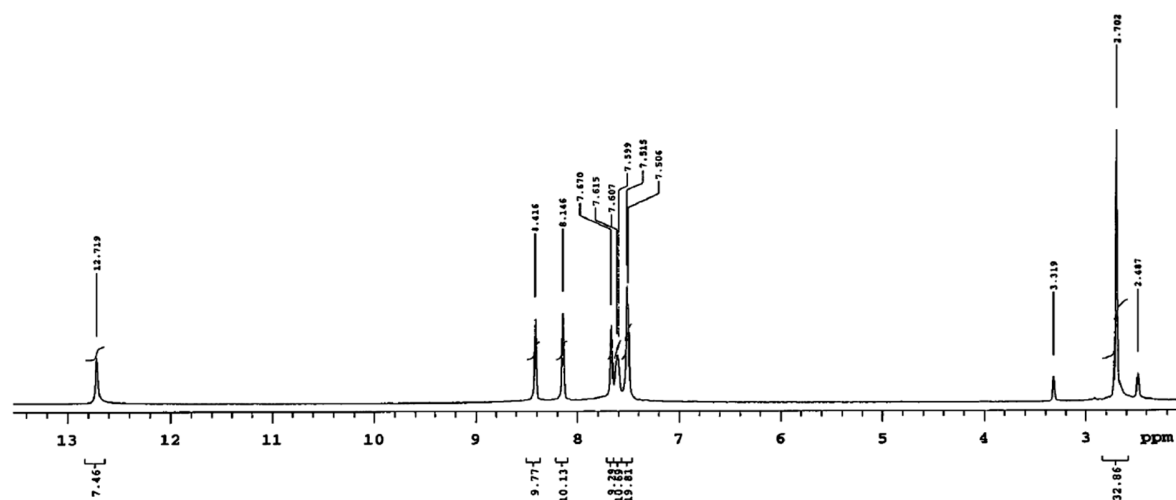


Figure S1.15: ¹H- and ¹³C-NMR spectra of 5c in DMSO-*d*₆ at 300 MHz and 75 MHz, respectively.

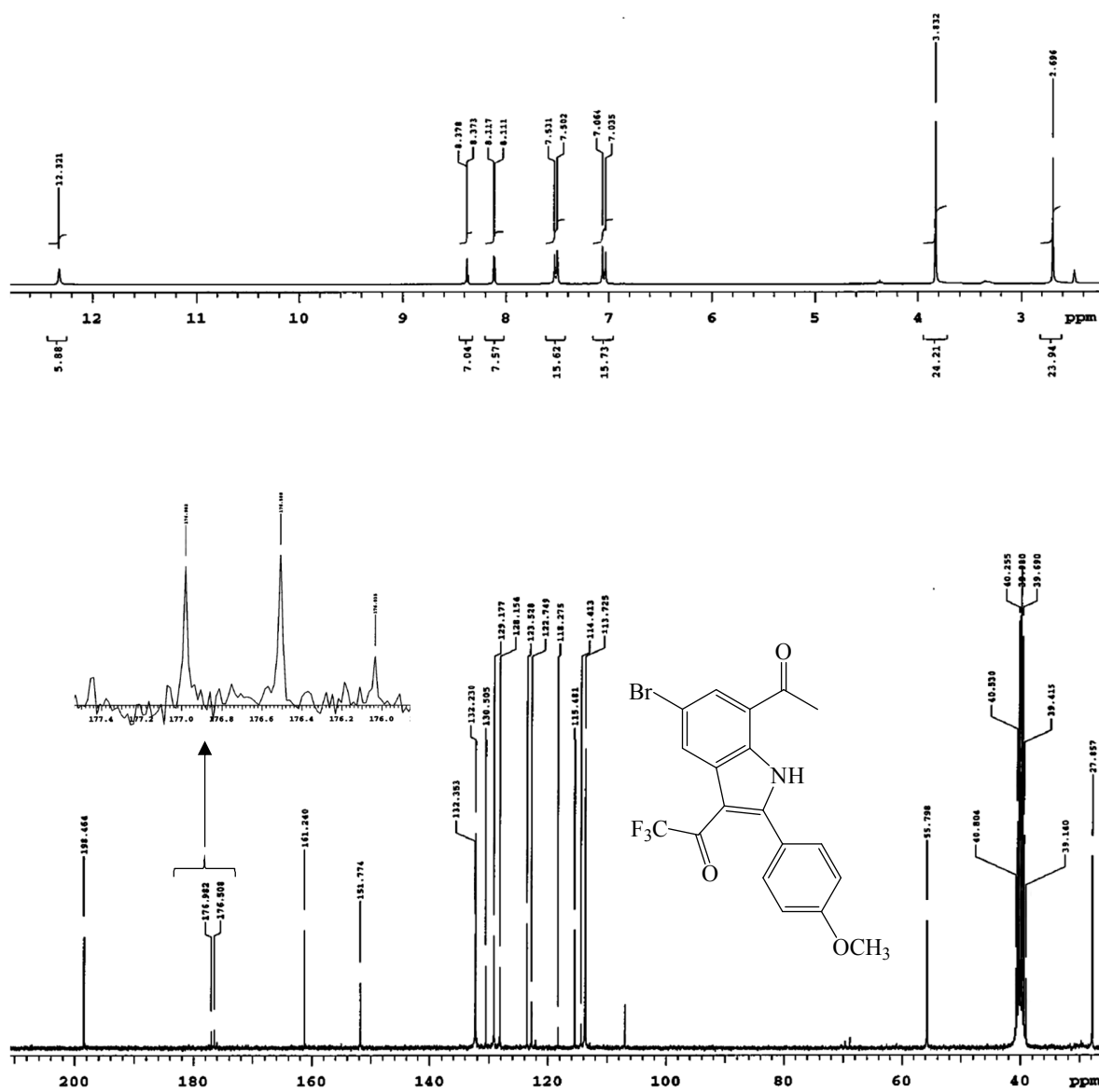


Figure S1.16: ¹H- and ¹³C-NMR spectra of **5d** in DMSO-*d*₆ at 300 MHz and 75 MHz, respectively.

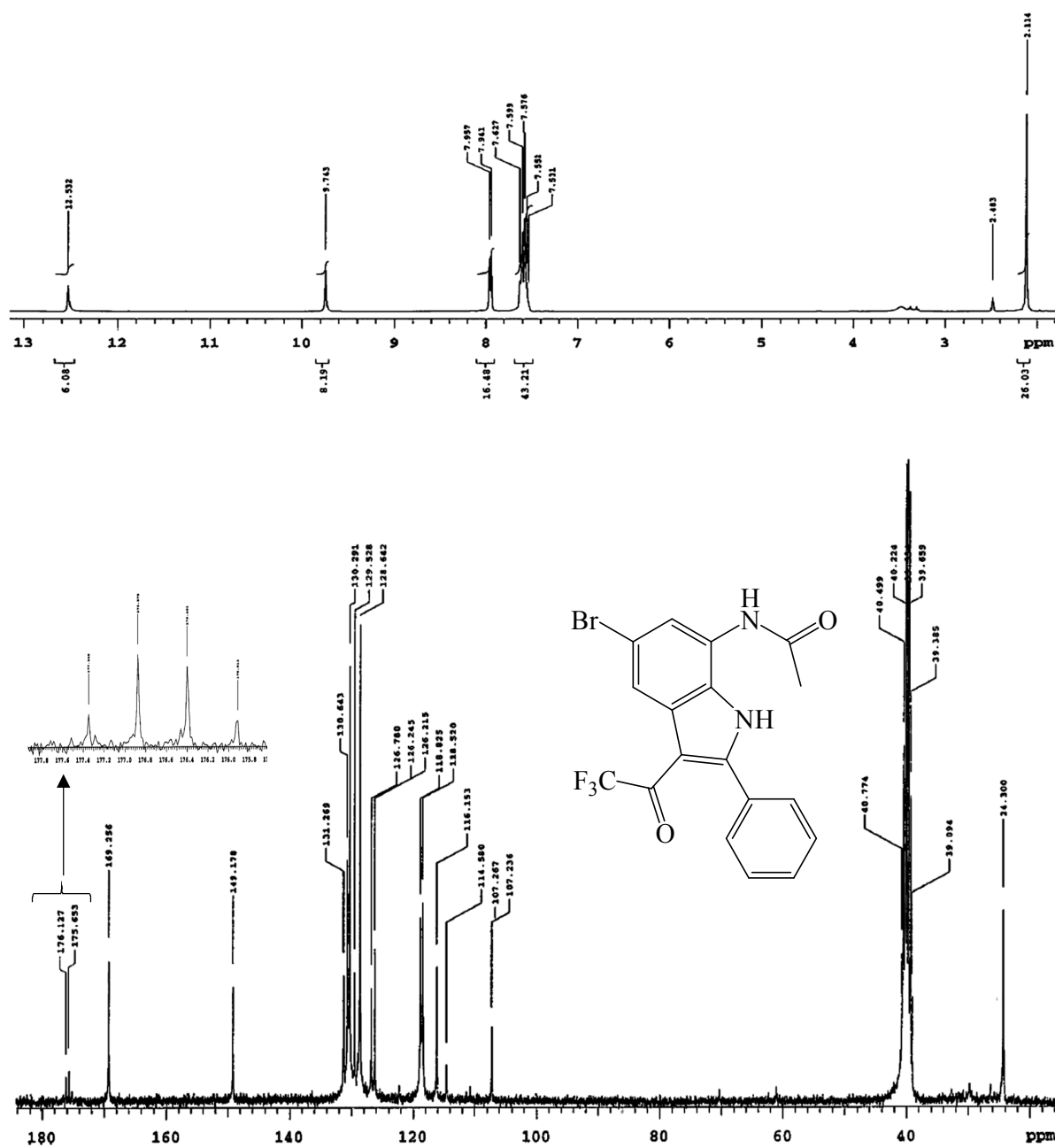


Figure S1.17: ¹H- and ¹³C-NMR spectra of **5e** in DMSO-*d*₆ at 300 MHz and 75 MHz, respectively.

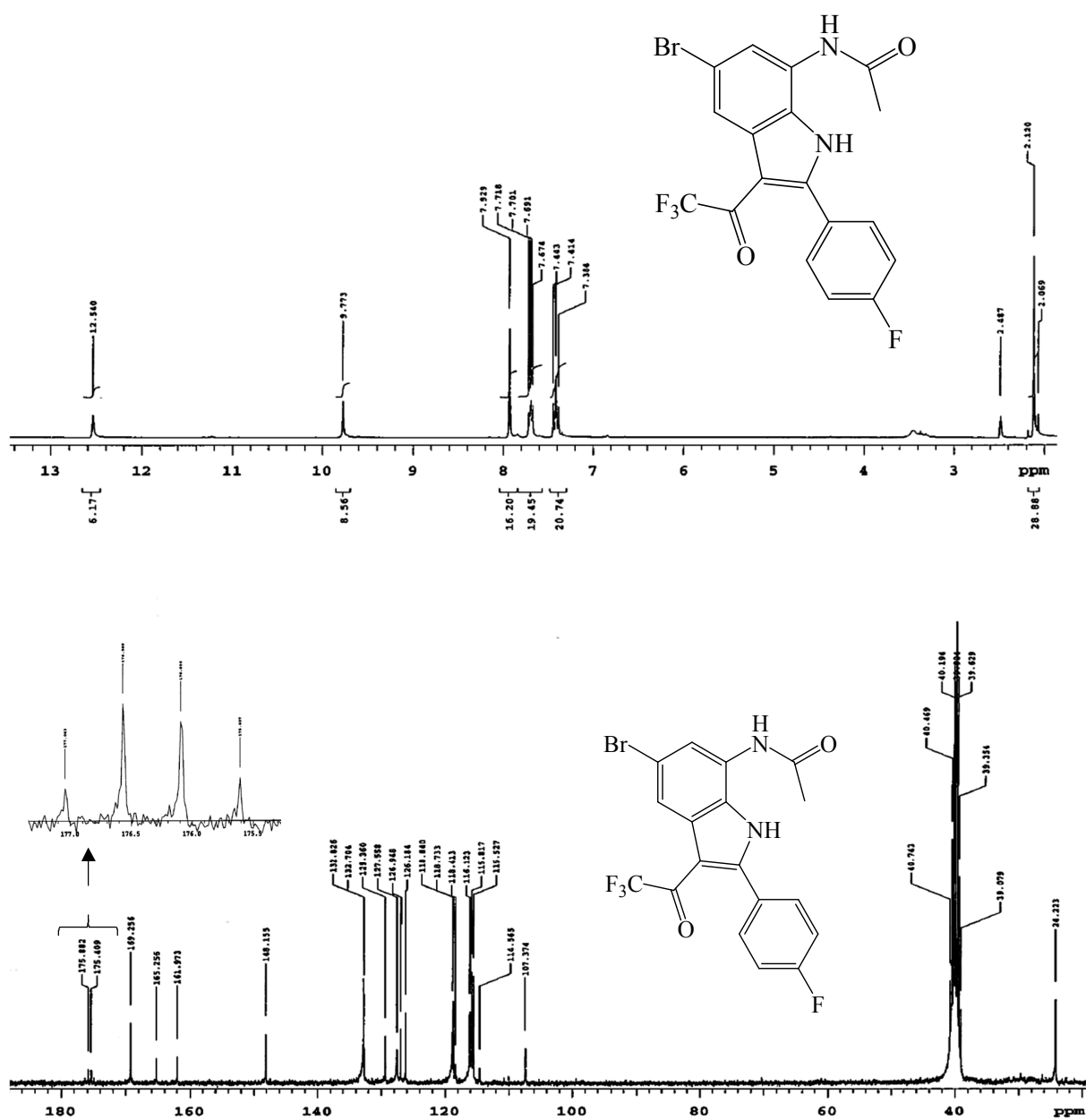


Figure S1.18: ¹H- and ¹³C-NMR spectra of **5f** in DMSO-*d*₆ at 300 MHz and 75 MHz, respectively.

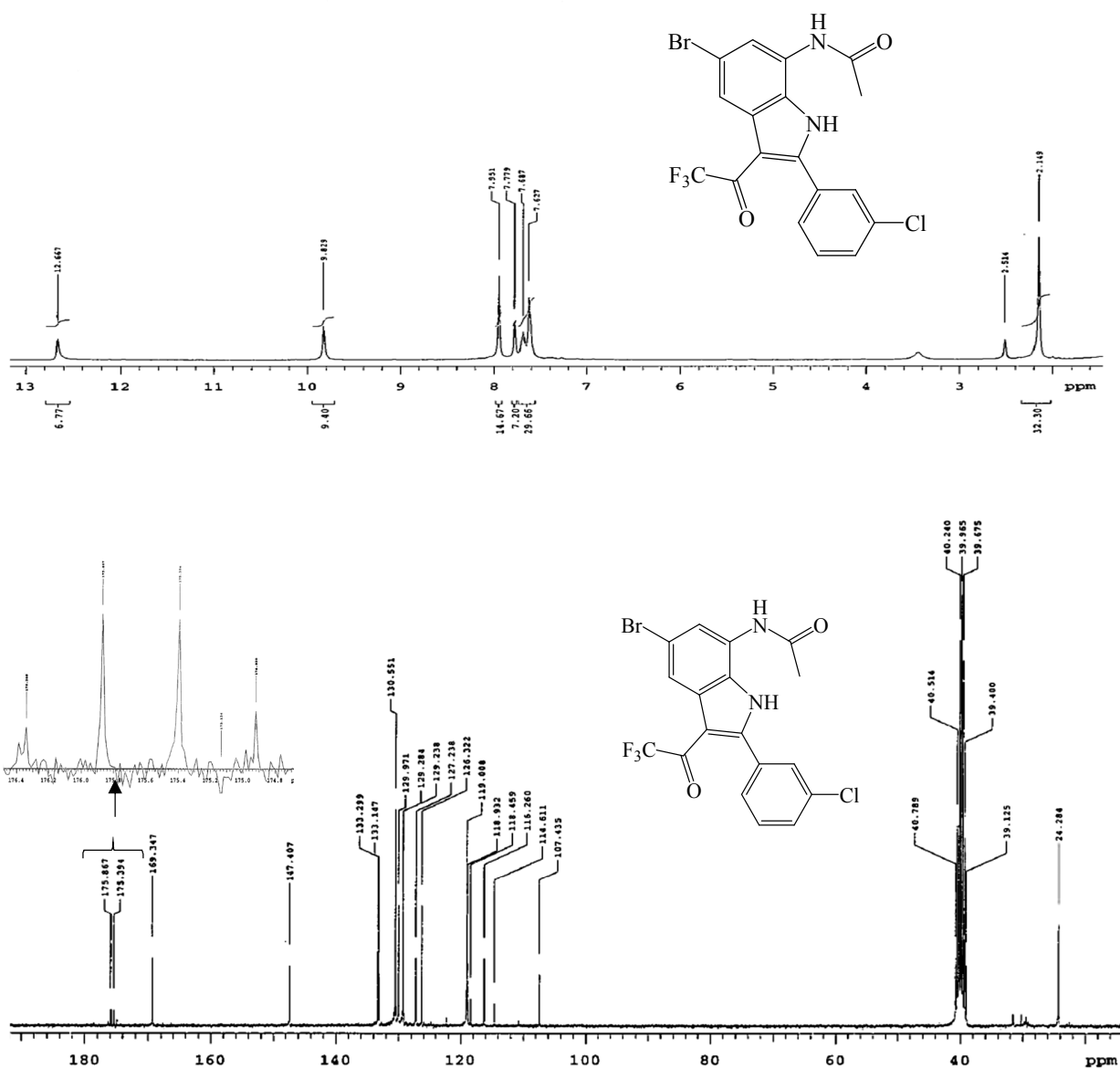


Figure S1.19: ¹H- and ¹³C-NMR spectra of **5g** in DMSO-*d*₆ at 300 MHz and 75 MHz, respectively.

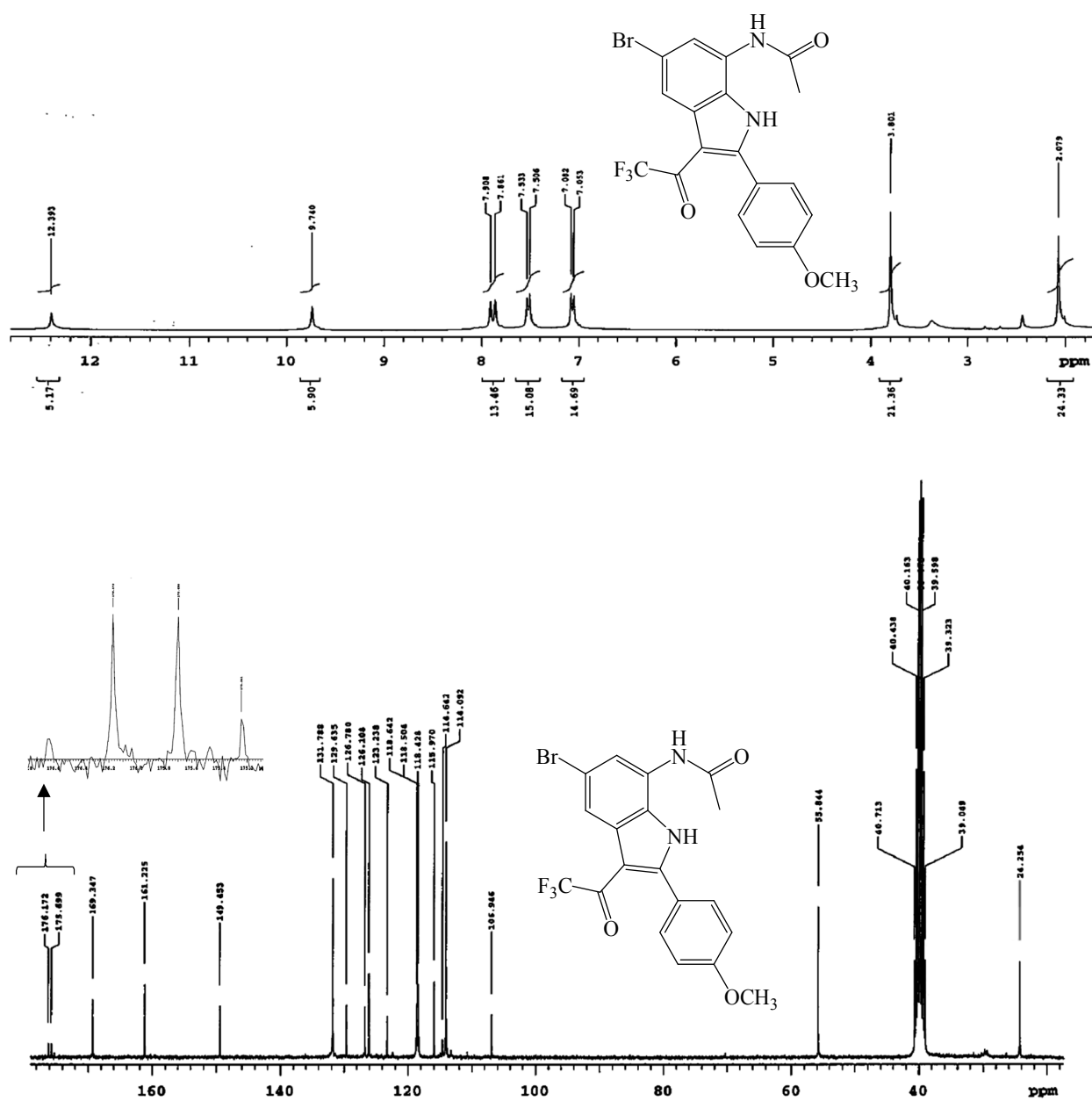


Figure S1.20: ¹H- and ¹³C-NMR spectra of **5h** in DMSO-*d*₆ at 300 MHz and 75 MHz, respectively.

Figure S2: Cytotoxicity of compounds **2a–d**, **4a–d** and **5a–h** against A549 and HeLa cells

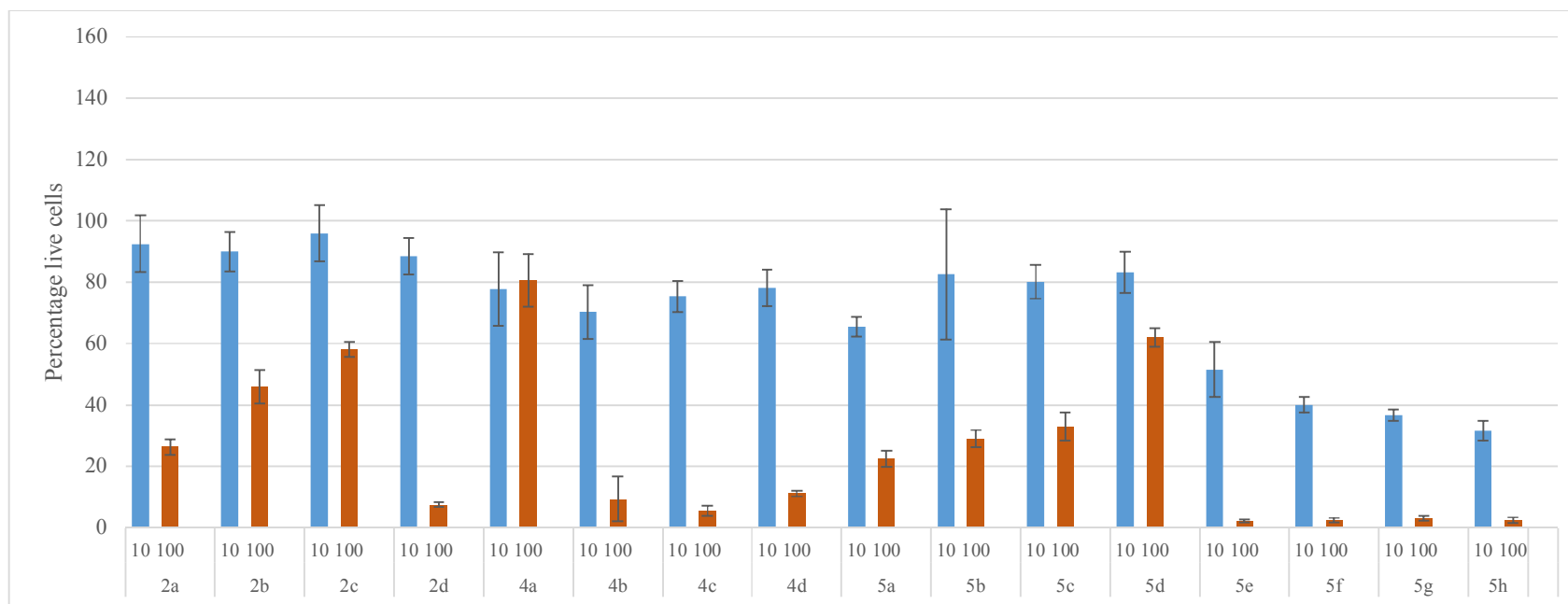


Figure S2.1: Cytotoxicity of **2a–d**, **4a–d** and **5a–h** at 10 μM (blue bar) and 100 μM (orange bar) against A549 cells. The results are indicated as percentage live cells compared to an untreated control. Error bars denote standard deviation of one experiment performed in quadruplicate.

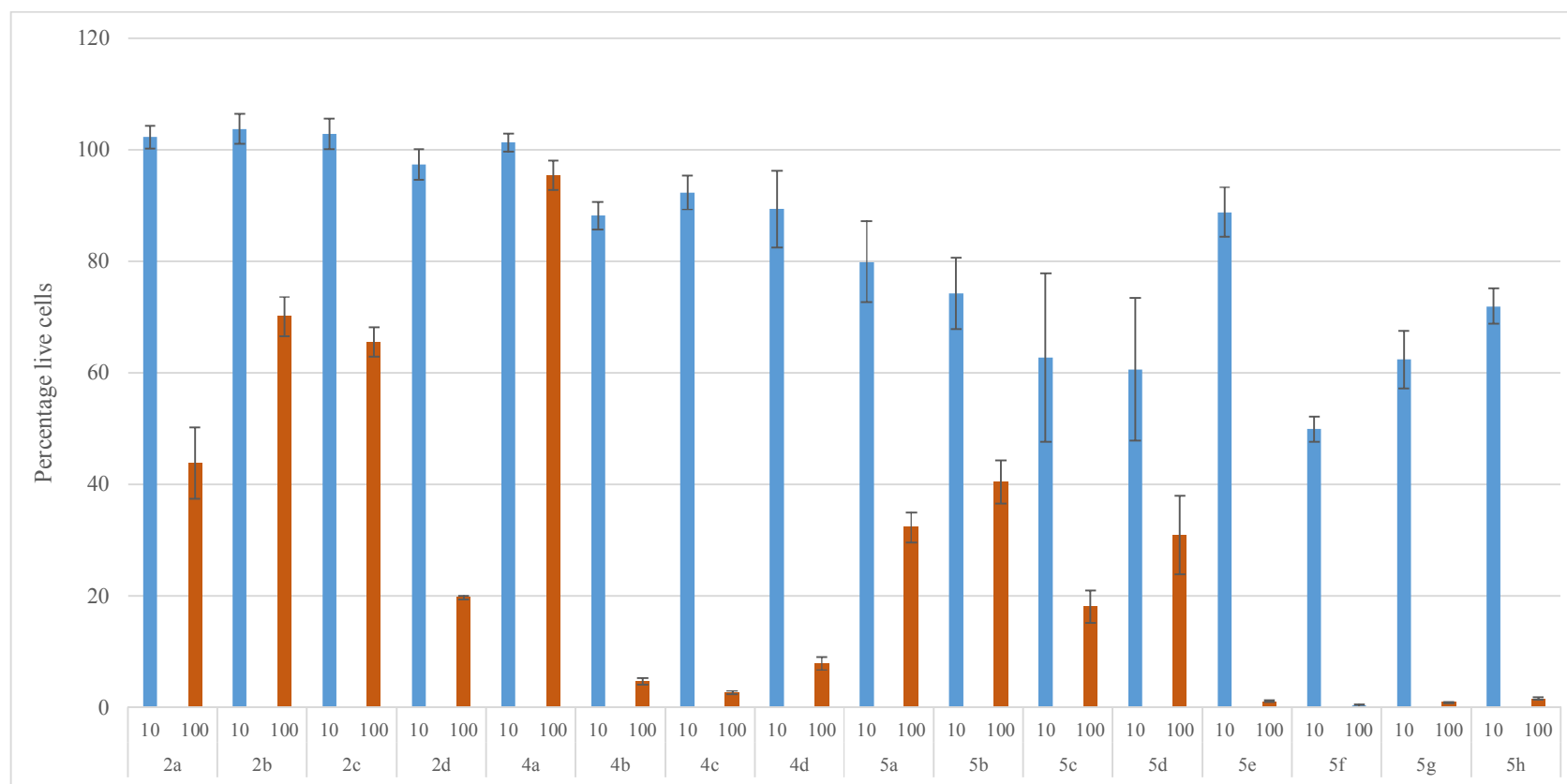


Figure S2.2: Cytotoxicity of **2a–d**, **4a–d** and **5a–h** at 10 μM (blue bar) and 100 μM (orange bar) against HeLa cervical cancer cells. The results are indicated as percentage live cells compared to an untreated control. Error bars denote standard deviation of one experiment performed in quadruplicate.

Figure S3: Dose response curves for **5e–h** against the A549 and HeLa cells

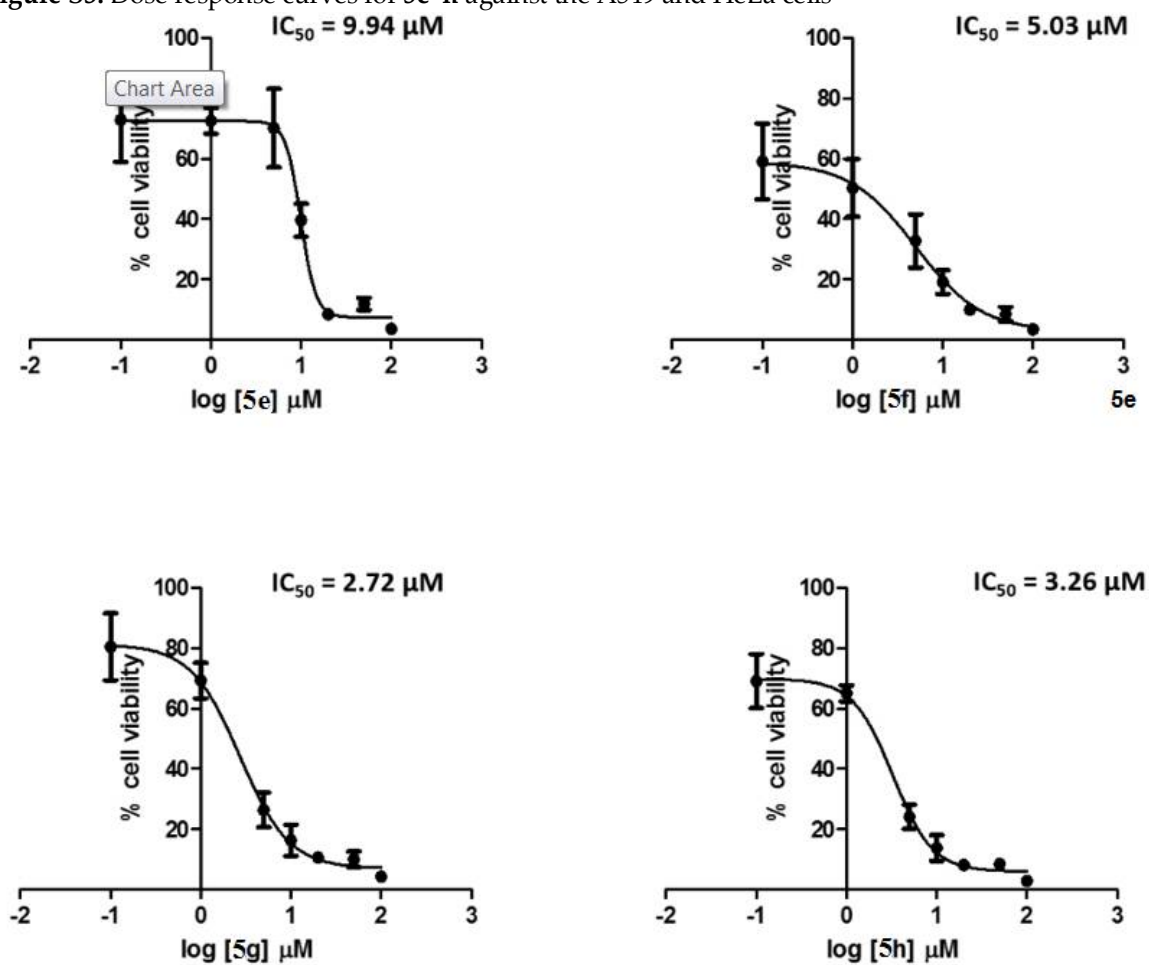


Figure S3.1: Dose response curves for compounds **5e–h** against A549 lung cancer cells. Data represents the mean \pm SD for six replicate wells at each of the indicated concentrations.

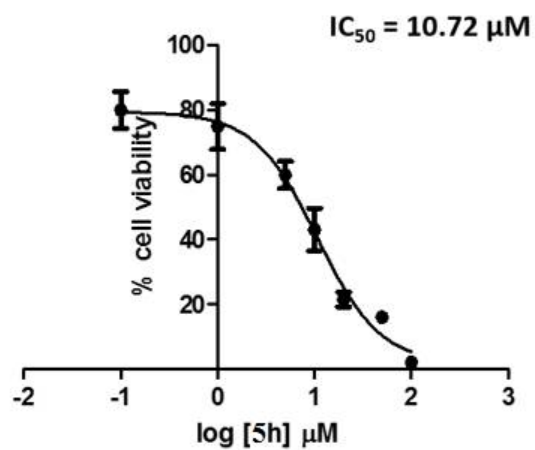
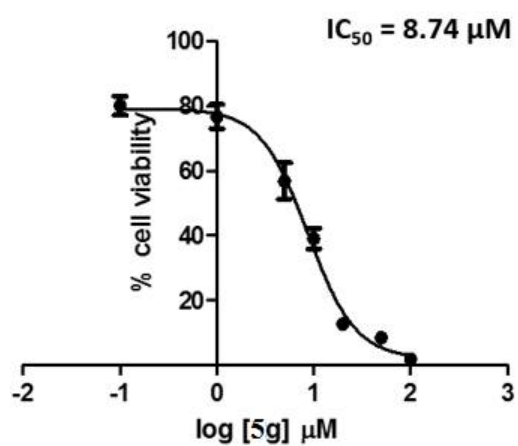
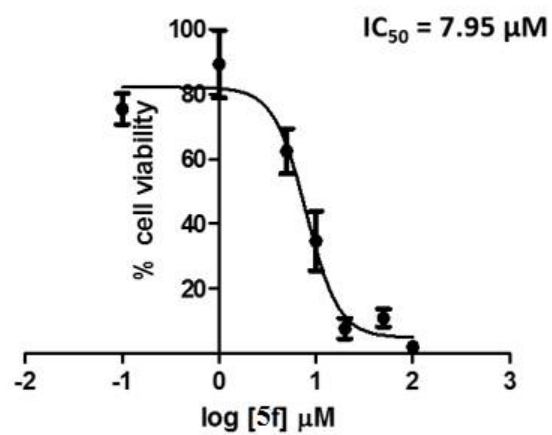
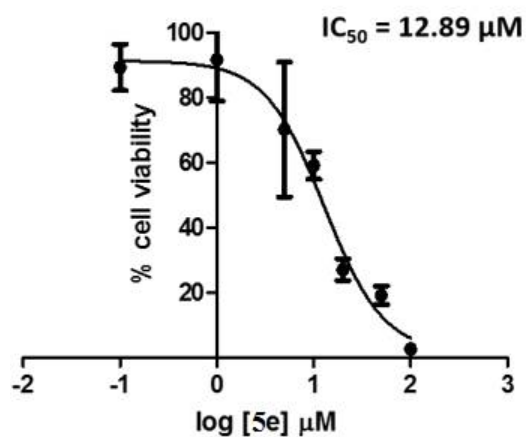


Figure 3.2: Dose response curves for **5e–h** against HeLa cells. Data represents the mean \pm SD for six replicate wells at each of the indicated concentrations.

Figure S4: Spread sheet for statistical analysis which contains p values for each test



Copy of processed
results_screening of c



Copy of processed
results_screening of c