

Increasing of strength of FDM (FFF) 3D printed parts by influencing on temperature-related parameters of the process

Vladimir E. Kuznetsov¹, Alexey N. Solonin, Azamat G. Tavitov, Oleg D. Urzhumtsev, Anna H. Vakulik
National University of Science and Technology "MISIS", Moscow, Russia

Abstract

This work investigates how the user-controlled parameters of the 3D printing process define temperature conditions on the boundary between layers of the part being fabricated and how these conditions influence the structure and strength of the part. The process studied is fused filament fabrication with a desktop 3D printer and the material utilized is PLA (polylactic acid). As a characteristic of the part strength the fracture load in the case of a three-point bend and calculated related stress were used. During the printing process parts were oriented with the long side along the Z axis, thus, in the bend tests, the maximum stress occurred orthogonally to the layers. During the fabrication process, temperature distribution on the sample surface was monitored with thermal imager. Sample mesostructure was analyzed using SEM. The influence of the extrusion temperature, the intensity of part cooling, the printing speed and the time between printing individual layers were considered. The influence of all the parameters can be expressed through two generalizing factors: the temperature of the previous layer and the flow efficiency, determining the ratio of the amount of extruded plastic to the calculated. A regression model was proposed that describes the effect of the two factors on the printed part strength. Along with interlayer bonding strength, these two factors determine the formation of the part mesostructure (the geometry of the boundaries between individual threads). It is shown that the optimization of the process parameters responsible for temperature conditions makes it possible to approximate the strength of the interlayer cohesion to the bulk material strength.

Keywords: *additive manufacturing; desktop 3D printing; fused deposition modeling; fused filament fabrication; polylactic acid; anisotropy; interlayer bonds; mechanical strength; digital fabrication*

¹

Corresponding author, Email address: kuznetsovve@isis.ru

Table of content

1	Introduction	4
2	Methodology.....	4
2.1	Sample fabrication	4
2.2	Mechanical studies	6
2.3	Mesostructure analysis	6
2.4	Sublayer temperature evaluation	7
3	Results and discussion	7
3.1	Extrusion temperature.....	7
3.2	Cooling conditions.....	9
3.3	Feed rate	11
3.4	Layer printing time.....	14
4	Generalization of results	15
4.1	Minimizing the factor space.....	15
4.2	Structure morphology	20
4.3	Comparing with reference.....	25
4.4	Comparing with previous study	26
	Case studies	26
	Case 1. Box spanner adapter	27
	Case 2. Spike heel enclosure	28
	Case 3. Device housing	29
	Conclusions.....	30
	Acknowledgments.....	30
	Author Contributions.....	30
	Conflicts of Interest.....	30
	References	31

In the current work, the following notions are introduced and the following shorthands are used:

FDM(FFF) — Fused Deposition Method (Fused Filament Fabrication) is a technology of digital additive manufacturing based on layered deposition of melted thermoplastic. While *FDM* is a trademark of Stratasys Inc., the *FFF* is a term coined inside the RepRap community;

UFL — Ultimate Fracture Load, maximum load observed during mechanical testing;

UFS — Ultimate Fracture Strength, calculated stress in the sample caused by *UFL*;

t_E — extrusion temperature — temperature of the hot end of the 3D printer at which sample is fabricated;

Sublayer — a layer of plastic already deposited by *FDM(FFF)* 3D printer which acts as a substrate for layer being deposited at given moment;

t_{SUB} — temperature of *sublayer*;

Filament — plastic in the filament form used as supply in *FDM(FFF)* process;

Thread — extruded and deposited thread of plastic mimicking the 3D printed part;

Underextrusion — a characteristic defect in *FDM(FFF)* process resulting in significant drop in thread thickness or in thread interruptions;

F_E — flow efficiency — a ratio of real to calculated mass of 3D printed object;

SEM — scanning electron microscopy;

DSC — differential scanning calorimetry.

1 Introduction

Parts obtained with a 3D printer tend to be far inferior in strength to the usual plastic products obtained with the help of injection molding and other conventional manufacturing methods. One of the reasons for the low strength is the lack of knowledge about the effect of the FDM (FFF) process parameters available for operator control on the strength of the resulting part. In the area of FDM (FFF) 3D printing, there should be no notion of “strength of the part material”, just the “part strength” is important. Products obtained with this technology are extremely anisotropic [1] and consist of layers (usually of the same thickness), which in turn are patterns formed by a thread made of the molten polymer [2–4]. The failure of a loaded part occurs in the vast majority of cases along the boundary between the threads. The part strength is accordingly determined by its geometric parameters (the superposition of the individual threads relative to each other) and the bond strength between the individual threads. A good illustration that the strength of the material itself is of secondary importance for the part strength obtained with FDM (FFF) is shown in [5], where the part strength for ABS products is significantly inferior to the strength of PLA parts, while parts obtained from the same materials with injection molding demonstrate the directly opposite picture.

Temperature conditions at which a bond is formed between the layers noticeably play an important role in strengthening the junction [6, 7]. However, the temperature parameters of the 3D printing process on an average desktop printer with an open working volume (without an insulated thermal camera) are not so easy to register and control. The purpose of this study is to find and evaluate the user-accessible desktop FDM (FFF) 3D printer capabilities to increase the strength of PLA printed parts associated with temperature factors. There are various factors associated with the geometric parameters of the part and process (nozzle diameter, layer thickness) left aside, as well as the characteristics of the material used for printing.

2 Methodology

As of now, there are no standard and widely accepted methods for determining the strength of FDM (FFF) parts. That fact allows researchers to enjoy a certain freedom in choosing the geometry of the test sample and the way to apply load to it. However, most of the known works [8–15] on the dependence of FDM (FFF) parts strength on certain parameters are based on the techniques described by the standard [16], developed for testing isotropic materials. In our opinion, a simple and informative technique for evaluating the strength of a part obtained with FDM (FFF) is a three-point bending until the sample is broken [17]. The shape and dimensions of the sample must ensure its stability in the printing process with a long-side orientation along the Z axis. Such an orientation of the sample during printing leads to the fact that the maximum stresses acting in the critical section are oriented orthogonally to the layer boundaries, that is, in the direction in which the product should exhibit the least strength. Testing of samples with stresses applied along fibers has less practical interest, since an anisotropic part will obviously exhibit higher strength characteristics along the fibers.

2.1 Sample fabrication

For this experiment we used tube-shaped samples of rectangular cross-section with 10×20 mm in size, of 120 mm in length with fillets R2 mm along long ribs (Figure 1, left). The tube shape of the sample was provided by setting the “infill” parameter to “0” in the slicer interface program (Cura 15.04) [18] and turning off the “solid infill top” and “solid infill bottom” checkboxes. The thickness of the tube wall was defined by the “shell thickness” parameter and was set to 2.4 mm. The choice of this exact shape and sample size was determined by the desire to obtain data compatible with the one from the recent publication on the main geometric parameters (nozzle diameter and layer thickness) which influence on printed part strength [17]. For the production of samples, the Ultimaker 2 (Ultimaker B.V., Geldermalsen,

The Netherlands) desktop printer was used. The machine was equipped with few aftermarket upgrades, such as an alternative BondTech (Bondtech AB, Värnamo, Sweden) extruder [19], built on the basis of a stepper motor with an integrated gearbox and double drive (both feed gears are driven) and an alternative hot end from 3D Solex (Cepta AS, Norway) [20] with a heating element of increased power (~50W). The heating unit, compared to the standard one installed on the Ultimaker 2, allows for changing the nozzles. In this series of experiments a nozzle with a channel diameter of 0.6 mm was used instead of the standard 0.4 mm nozzle for Ultimaker 2.

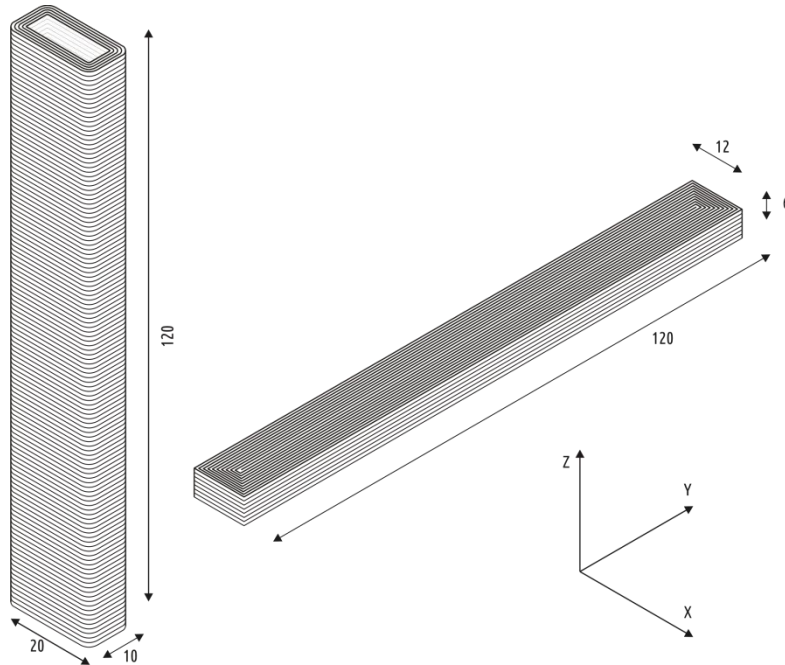


Figure 1. Shape, dimensions and printing orientation of the research (left) and the reference (right) samples

The turquoise PLA filament from REC brand was used. In different parts of the experiment, filament from different lots might have been used, which can introduce errors or deviations into the study. The choice of this specific plastic is due solely to the desire to work with locally produced material. In the course of these experiments, the following parameters of sample manufacturing remained unchanged:

- nozzle diameter and layer thickness (0.6 and 0.3 mm, respectively);
- bed heating temperature (60 °C).

The following parameters were varied:

- hot end temperature (from 190 to 250°C with 10°C step);
- cooling intensity (the parameter “fan speed” that defines fresh layer cooling was set to 0%, 50%, 100%);
- linear printing speed (feed rate 12.5, 25, 37.5, and 50 mm/s), and
- the number of simultaneously printed samples (1, 2, 3 or 5).

For each of the observations, a lot of at least three samples was prepared and tested to perform averaging and exclude outliers.

The data on PLA plastic part strength vary largely in literature, which makes it difficult to use them for comparison. Thus, specially manufactured samples of parallelepiped shape with dimensions of 6×12×120 mm were used to estimate reference strength values. Printing was performed out of the same material, with the same nozzle (0.6 mm) and layers of the same thickness (0.3 mm), however the reference samples were oriented with the long side along the “Y” axis (Figure 1, right). Thus, in the bending tests, the maximum stress acted parallel to the constituting threads. Obviously, for such shape and loading

method, the fiber strength is of greatest importance rather than cohesive strength between them. To ensure that all threads are directed along the axis where maximum stresses occur, the upper and lower base thickness was set to zero and the wall thickness was set equal to the part width (i.e. the whole sample consisted of a shell, with no infill and top/bottom covers). Reference samples were printed at 210°C, with fans switched on at maximum intensity, and 25 mm/s feed rate.

2.2 Mechanical studies

The printed samples were tested with a universal electromechanical testing machine with a test rig for three-point bending. The samples rested on two cylindrical supports of 30 mm diameter with a distance of 100 mm between the centers, the load was put on the middle of the sample between the supports by a cylinder of 40 mm in diameter.

The tests were carried out with the crosshead of the tensile tester moving at a speed of 10 mm/min.

During the test, the displacement and load were recorded, with the initial load for stabilizing the sample set at 5N. The key parameter was the maximum load measured before the samples failed (*UFL*).

For a more general discussion of results obtained, the normal stresses in the samples at the moment of failure (*UFS*) were calculated. The stresses were calculated by dividing the maximum moment (*M*) by the section modulus (*W*):

$$UFS = \frac{M}{W}, \text{ MPa.}$$

The maximum moment for testing samples at distance between the supports (*l*) of 100mm

$$M = \frac{F \times l}{4} = 0.025F, \text{ N}\cdot\text{m},$$

where *F* is the load in N at the moment of failure (*UFL*).

The section moment is calculated by using formula:

$$W = \frac{2I}{h}, \text{ m}^3,$$

where *I* is the second moment of the cross-section, calculated with the built-in app of SolidWorks to be 1416.89 mm⁴.

Thus, the maximum normal stress in the sample can be calculated from the load by

$$UFS = 0.088F,$$

where *F* is given in N and *UFS* is in MPa.

For reference samples with rectangular cross-section stresses were calculated by classical formula:

$$UFS = \frac{3F \times l}{2b \times h^2},$$

where *F* is maximum observed load (*UFL*), N; *l* is a support span and *b* and *h* are wideness and thickness of the sample, m

For the reference sample of used geometry:

$$UFS = 0.347F,$$

where *F* is given in N and *UFS* is in MPa.

2.3 Mesostructure analysis

Cross-section mesostructure of some of the broken samples were investigated using scanning electron microscopy (SEM) on Tescan Vega 3 LMH (TESCAN Brno, s.r.o., Brno – Kohoutovice, Czech Republic) microscope.

2.4 Sublayer temperature evaluation

During the printing of the samples, the temperature distribution over the surface of each sample was recorded using a FLIR B335 (FLIR Systems, Wilsonville, OR, USA) thermal imager with a resolution of 320×240 pixels. The camera was located in front of the printer. Thermal imaging was carried out when the sample was ready for 40-60% (approximately in the area in which further destruction at the three-point bend occurred). The survey was carried out from a distance of about 30 cm, which is equal to minimal focal distance documented for the imager.

The software "FLIR Tools" [21] was used to determine the average temperature on the surface of the sample at a distance of 1...3 mm from the lower cut of the nozzle. This temperature was taken as the sublayer temperature (t_{SUB}).

3 Results and discussion

3.1 Extrusion temperature

The default t_E for the PLA in the Ultimaker 2 printer is 210°C. Filament producers generally do not indicate the specific t_E , but the suggested temperature range. In particular, for the material used in the study, the manufacturer claims a range of 190 to 230°C.

DSC analysis of the initial filament (Figure 2) allows to reveal the glass transition and melting temperatures of the polymer, which are, respectively, 70°C and 151°C, which corresponds to the known reference values for PLA. In the range between 190°C and 250°C, there are no qualitative changes in the curve, which allows one to expect that the dependency of the strength characteristics on the temperature in this interval will have be continuous. Moreover, there are no obvious obstacles for printing at temperatures exceeding the manufacturer's established limit of 230°C, leaving aside such aspects as a possible increase in the embodied energy of the product, the possible increase in ultrafine particles emission, or the reduction in the service life of the non-metallic parts of the hot end.

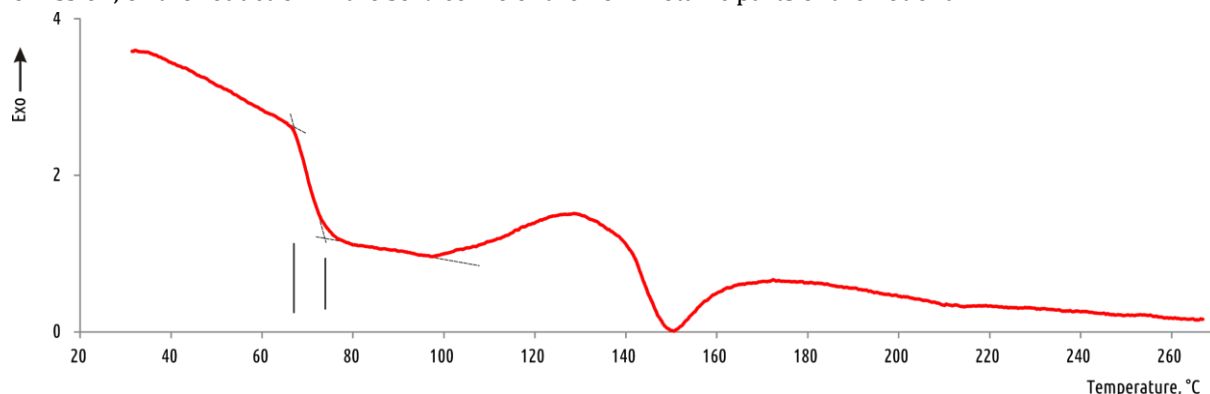


Figure 2. DSC analysis of filament used for samples fabrication

In the study the t_E was set directly on the printer at the beginning of the printing cycle. The temperature is monitored with the PT100 temperature sensor installed inside the heating unit. It should be noted that the actual temperature of the plastic being pressed through the nozzle may differ from the temperature of the heating block (from the temperature on the temperature sensor) in a negative way and this difference may increase when increasing the volume of plastic delivered through the nozzle per unit time. Samples printed at 190°C contained visible underextrusion defects and were thus excluded from further tests and the analysis. Samples obtained by printing in the temperature range of 200...250°C showed an explicit dependence of the strength on t_E . In all the investigated range, the strength increased with increasing temperature (Figure 3).

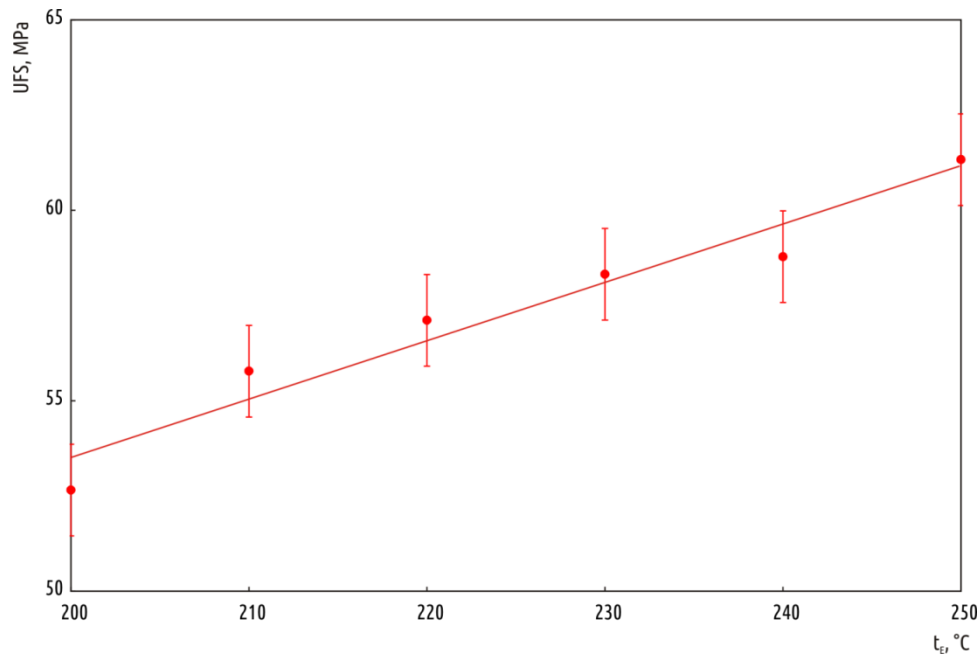


Figure 3. Dependence of the extrusion temperature on the samples strength

The increase in the t_E is also reflected in the growth of the sample mass (Figure 4).

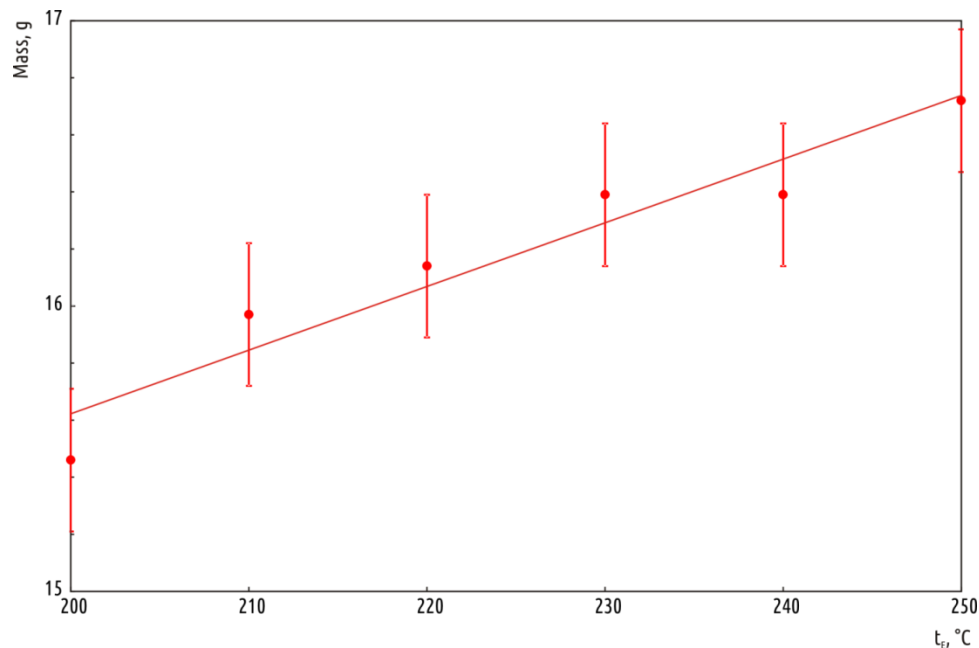


Figure 4. Dependence of the extrusion temperature on the sample mass

This increase is explained by the growing fluidity of superheated liquid plastic and the decrease in resistance as it passes through the channel in the nozzle (extrusion resistance). Despite the fact that the rotation speed of the extruder motor does not depend on the temperature of the heating element, extrusion resistance decreases with increasing temperature, so that the plastic passes faster through the feeder due to decrease in parasitic slides and filament strains.

The increase in the sample mass should have a positive effect on its strength, however, when the t_E is changed from 200 °C to 250 °C, the average mass of the sample increased by 8%, while the strength increased by 16%.

The increase in the t_E is also accompanied by a noticeable increase in the t_{SUB} (Figure 5).

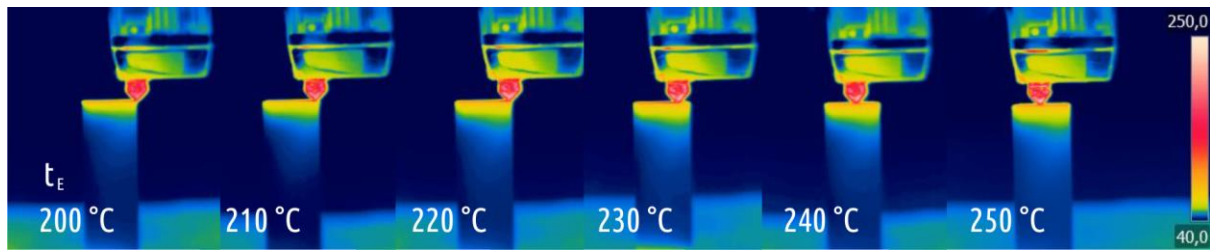


Figure 5. Temperature distribution in sample printing at different t_E (collage of six different thermograms)

Analysis of the longitudinal sections of the samples using SEM shows that the increasing flow of liquid plastic with increasing temperature does not fundamentally change the structure of the boundaries between the individual threads forming the sample. The interlayer boundaries are still weakened due to discontinuities, which are present along the boundaries of the individual threads forming each layer (Figure 6).

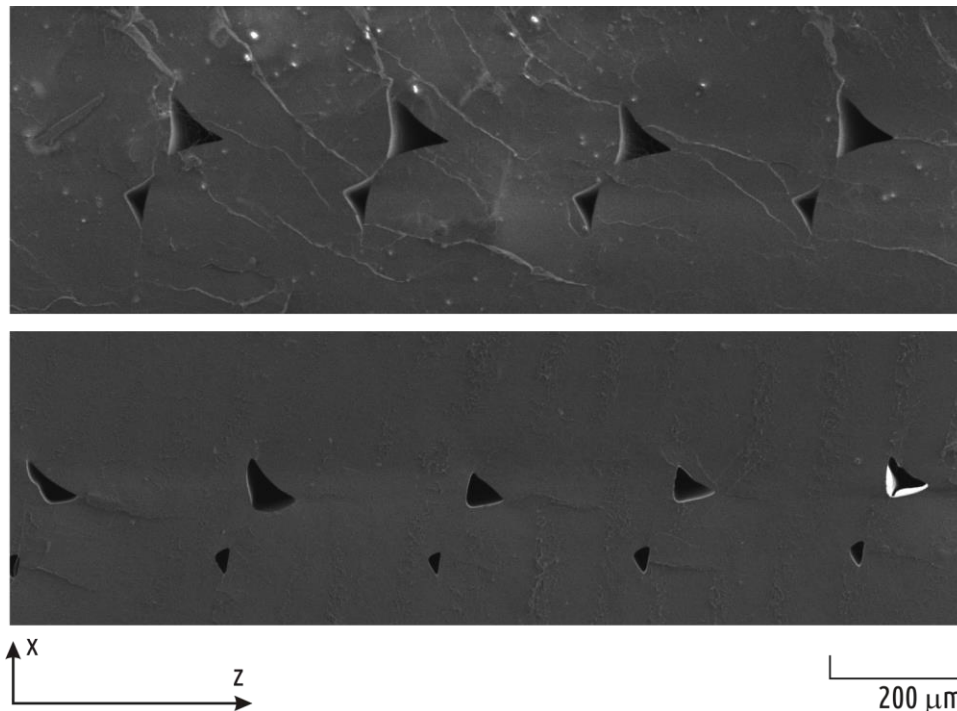


Figure 6. Voids between threads constituting samples printed at 210 °C (above) and 250 °C (below)

At the same time, voids on samples made at elevated temperatures have smaller areas.

The increase in the strength of the samples with increasing temperature is double-natured. In addition to changing the mass of the sample and, subsequently, the geometry of the interlayer boundaries, the strength increases due to an increase in cohesion between layers, depending on the temperature conditions for the formation of the boundary between the new and the previous layer. It is impossible to distinguish the impact of these two strengthening mechanisms. The next experiment was held to exclude any significant mass variations.

3.2 Cooling conditions

For the next set of experiments another group of sample lots was fabricated. Two levels of t_E were tested, the default of 210 °C and the elevated of 250 °C; samples were printed with different cooling conditions. Part cooling is set with the “fan speed” parameter in most desktop 3D printers, which defines fan rotation speed in percent (0% means the fans are off, 100% means they operate at full speed). Varying fan speed did not have any significant effect on sample mass, but obviously influenced the t_{SUB} (Figure 7).

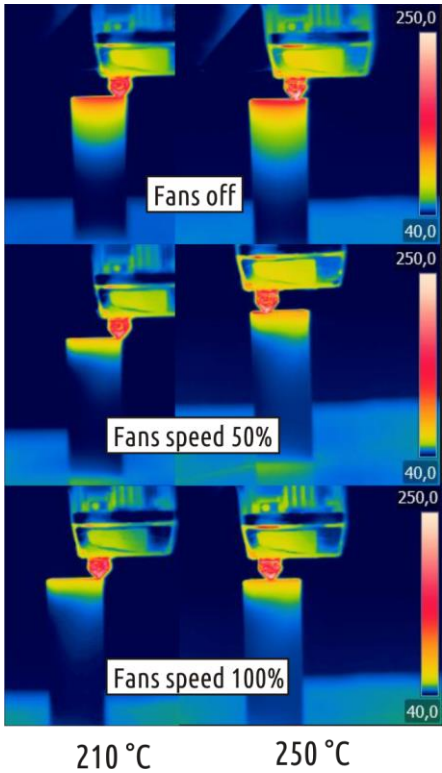


Figure 7. Temperature distribution depending on air flow (fans speed)

The experiment showed a strong dependency between part strength and cooling conditions (Figure 8). Strength of tested samples printed at default and elevated (210 and 250°C) temperature was increased by 11% and 12%, accordingly, by simply disabling the cooling.

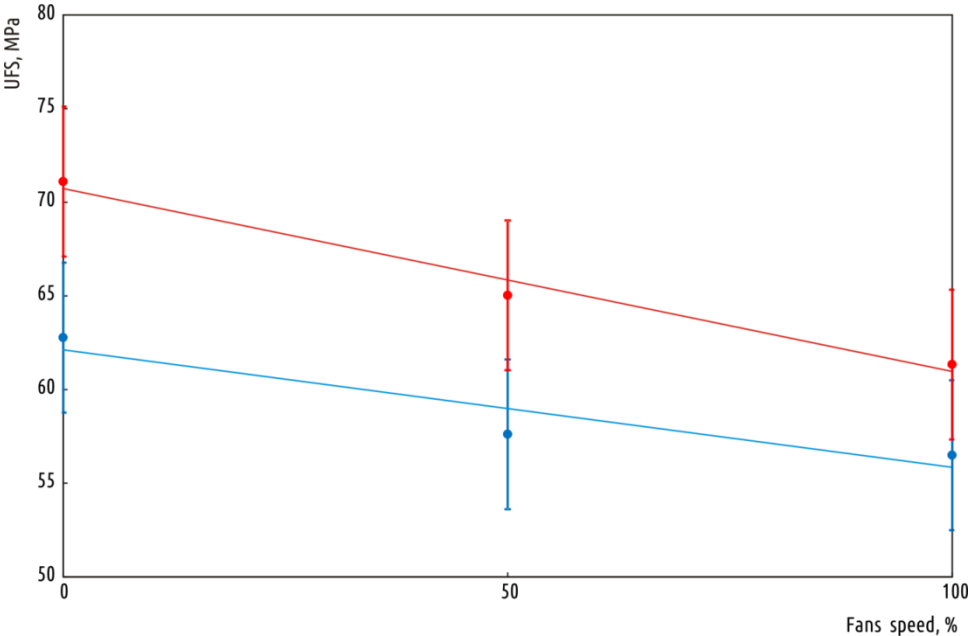


Figure 8. Dependence of cooling conditions (fans speed) on samples strength

Figure 9 contains SEM scans of longitudinal cross sections of samples, printed at t_E of 210°C with fans speed of 100%, 50% and with fans off.

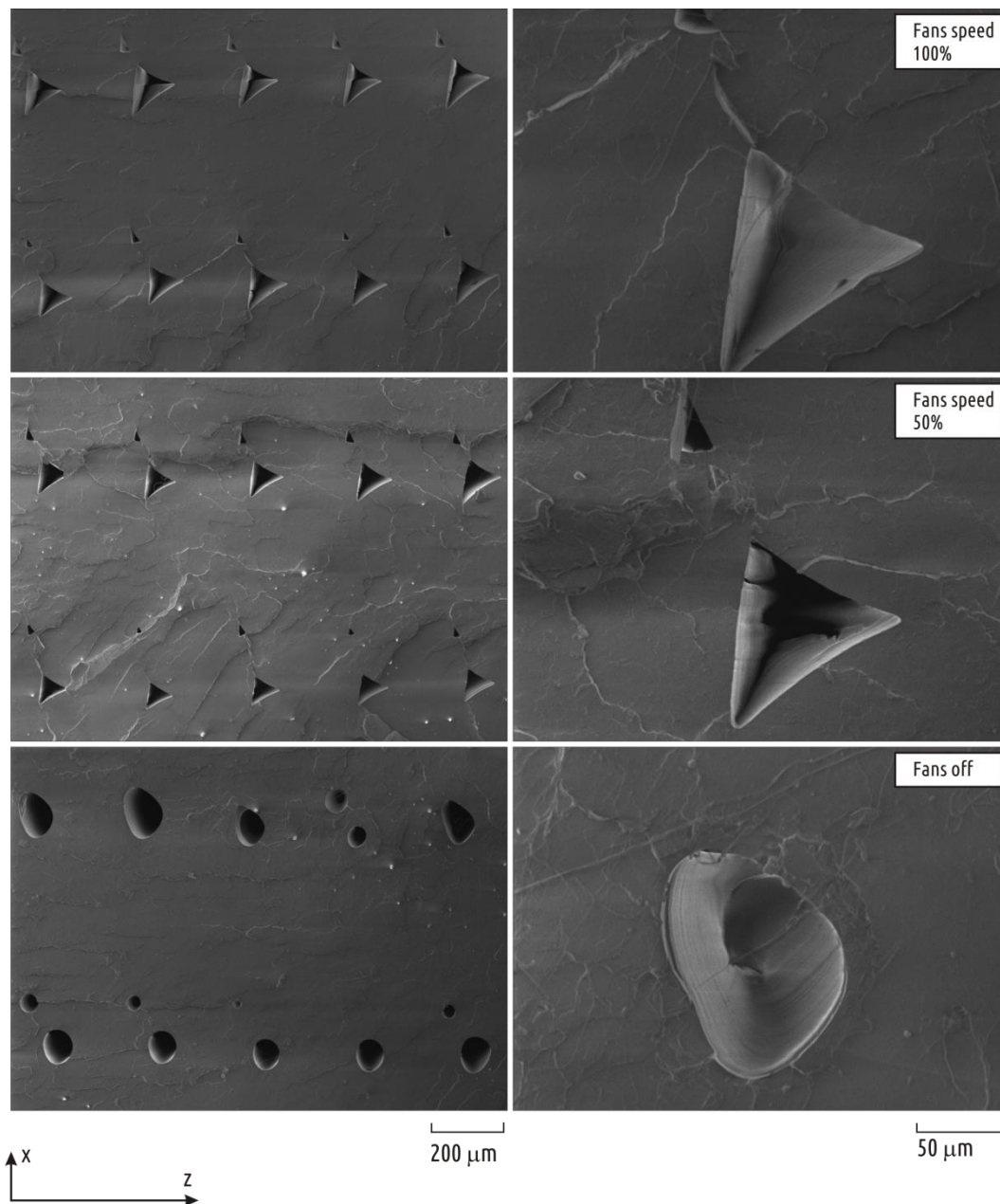


Figure 9. Mesostructure of samples printed with different cooling conditions

The cross-section of the sample printed with the fan off (the bottom image) looks totally different from the samples printed with the fan set at 50% and 100% (middle and upper images). Triangular cavities between the individual threads become more rounded when fans are switched off.

From a practical standpoint, increasing sample strength by turning off the fans has limited applicability. Obviously, results obtained for samples of such a low cross-section will differ a lot from those obtained for bigger ones. Printing time for samples of given geometry was ~ 7 seconds per layer, and the next layer was deposited while the previous one was still hot. The longer the layer is printed, the colder the underlying one will become.

3.3 Feed rate

Linear printing speed (feed rate) can have the least predictable effect on layer cohesive strength out of all factors considered in this paper. On one hand, increasing linear velocity also leads to an increase in the volumetric printing speed (flow rate, the volume of plastic extruded through the nozzle per unit of time). Thus, with increasing printing speed, the resistance to extrusion increases, which, obviously, will

adversely affect the part mass. Moreover, without changing the temperature of the heating block, increasing the flow rate can lead to a decrease in the temperature of the plastic at the nozzle outlet — the plastic can be fed through the hot end so quickly that it will be able to melt, but will not be able to heat up to the temperature of the heating block due to lower exposure time.

On the other hand, the higher the printing speed, the sooner the next layer is printed and the less the sublayer cools before the new layer is deposited. In this sense, increasing the printing speed can have a similar effect to decreasing cooling intensity and, thus, it will contribute to an increase in the cohesive strength between the layers. To study the influence of such a contradictory factor, one more experiment was conducted. During sample fabrication, the t_E (the default one of 210 °C, and the elevated of 250°C) and feed rate were varied. Samples were printed at a speed of 12.5, 37.5 and 50 mm/s. In this case, samples printed at a temperature of 210 °C at a speed of 50 mm/s contained obvious underextrusion defects and were excluded from the analysis. Strength tests of the remaining samples showed the following. Despite the fact that the mass of samples predictably decreases with increasing printing speed (Figure 10), the strength of samples printed at a temperature of 250 °C increases (Figure 11).

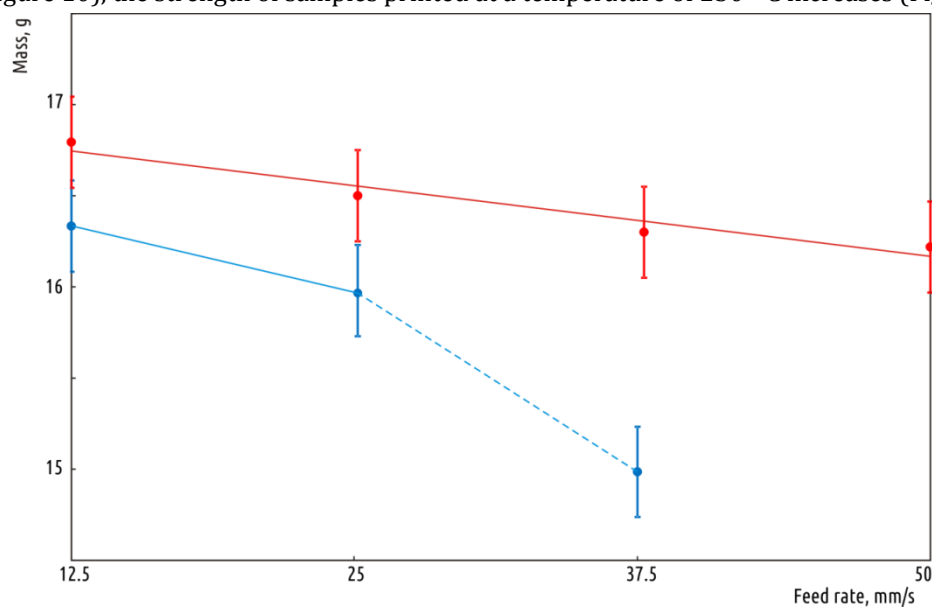


Figure 10. Dependence of printing speed on sample mass for 210°C (blue) and 250°C (red) extrusion

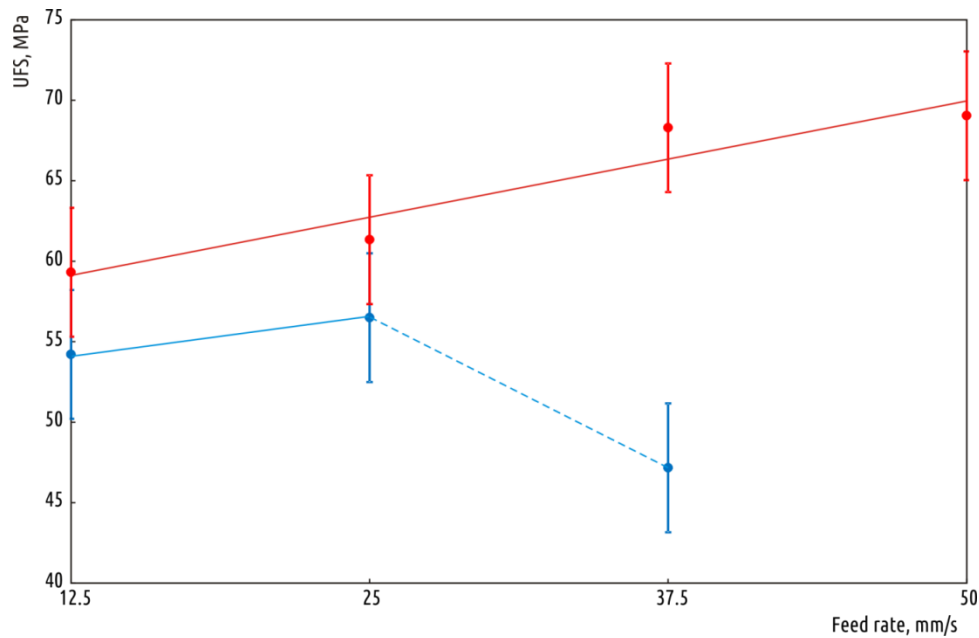


Figure 11. Dependence of printing speed on sample strength for 210 °C (blue) and 250 °C (red)

For samples printed at the default temperature (210 °C), the picture is different. If one can see a certain increase in strength when moving from a speed of 12.5 to a speed of 25 mm/s, then a further increase in speed to 37.5 mm/s leads to a sharp drop. The Figure 11 reflects the duality of the effect of printing speed on the part strength. At a temperature of 250°C, the plastic had sufficient fluidity to uniformly extrude at a speed of up to 9 mm³/s (volumetric velocity at a feed rate of 50 mm/s), but at a lower temperature, such a high speed led to the formation of obvious defects (specimens excluded from the study). Printing at 210°C at a speed of 6.8 mm³/s (37.5 mm/s feed) probably resulted in the appearance of defects not identifiable visually, but dramatically reducing the strength of the sample.

In general, despite the optimistic results obtained at t_E of 250 °C, when significant growth of UFS was achieved with a quadrupled speed (and corresponding reduction in printing time), printing speed has very limited potential for controlling the part strength. As noted above, the increase in strength is provided by increasing the t_{SUB} by reducing the time intervals between printing adjacent layers (Figure 12).

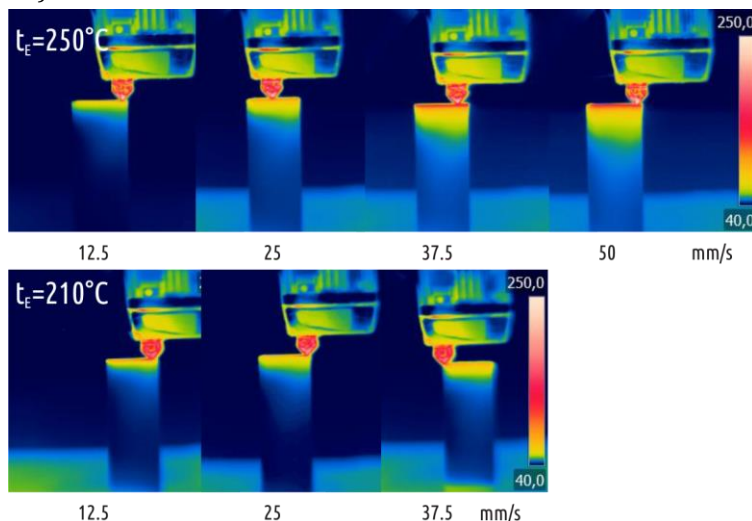


Figure 12. Temperature distribution dependence on printing speed (feed rate)

Obviously, this effect will be exhibited differently when printing parts with different perimeter length. In the case of relatively small parts (like the samples used in this study), a reasonable increase in speed will

lead to a noticeable increase in t_{SUB} and, as a result, a noticeable increase in strength. When printing much larger objects, where single layer printing time will not be counted in seconds but in tens of seconds or minutes regardless of the printing speed, the t_{SUB} will be close to the ambient temperature, leading the effect on strength to zero (or to negative due to mass reduction). To prove that statement, the next experiment was conducted.

3.4 Layer printing time

There were two, three and five samples sent to be printed with the strategy set to “all at once”. Two values of t_E were used of 210° and 250°C as well as constant printing speed of 25 mm/s. Increasing the number of samples on the bed did not lead to variations in their mass, but resulted in an increase in the time between printing the layers (~ 6.7, 15.5, 23.6 and 39.7 seconds for one, two, three and five samples, respectively) and, as a consequence, to the drop in t_{SUB} (Figure 13). The latter had a noticeable effect on the strength of the samples (Figure 14).

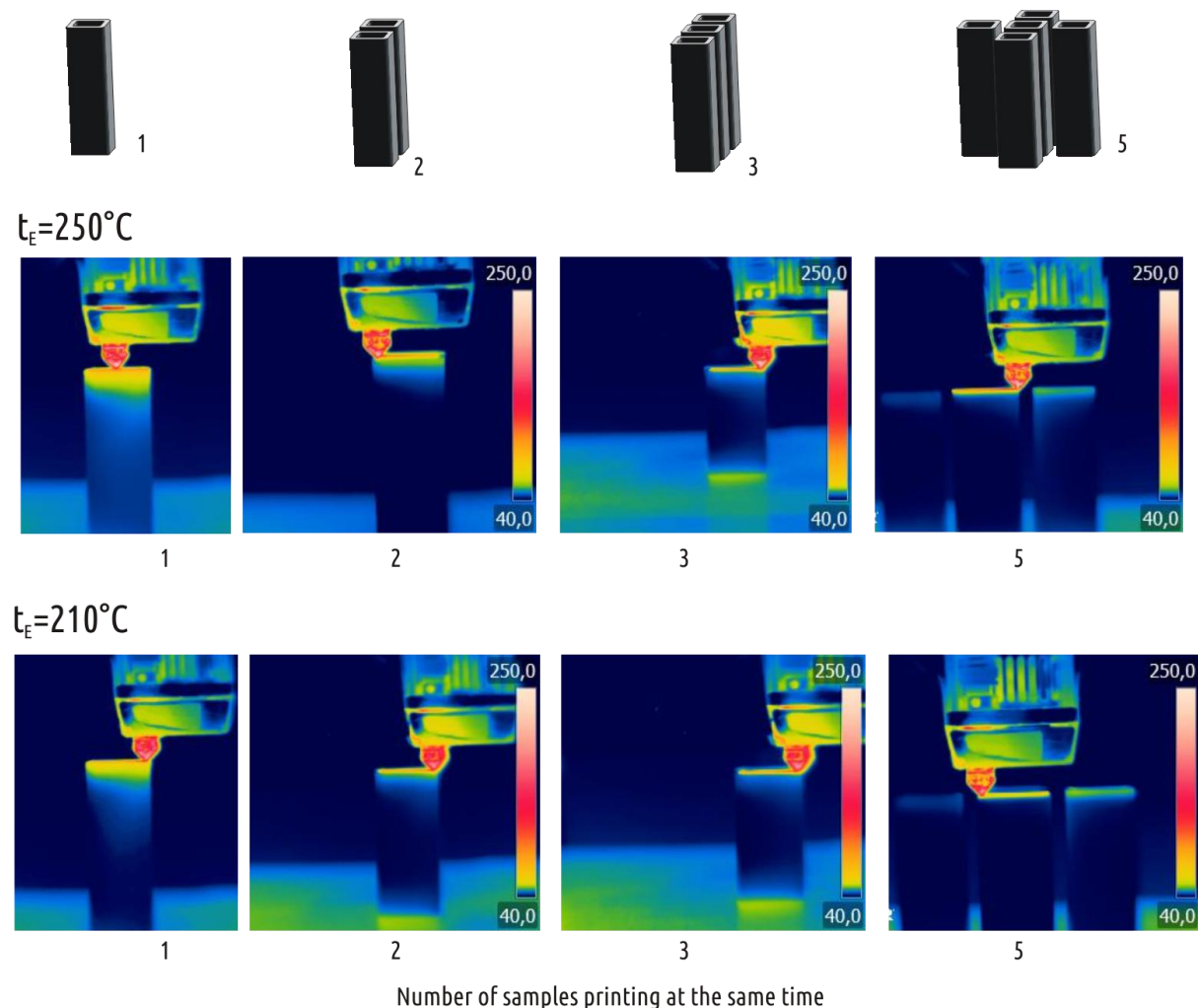


Figure 13. Positioning of samples (upper row) and temperature distribution at printing 1, 2, 3 and 5 samples at the same time

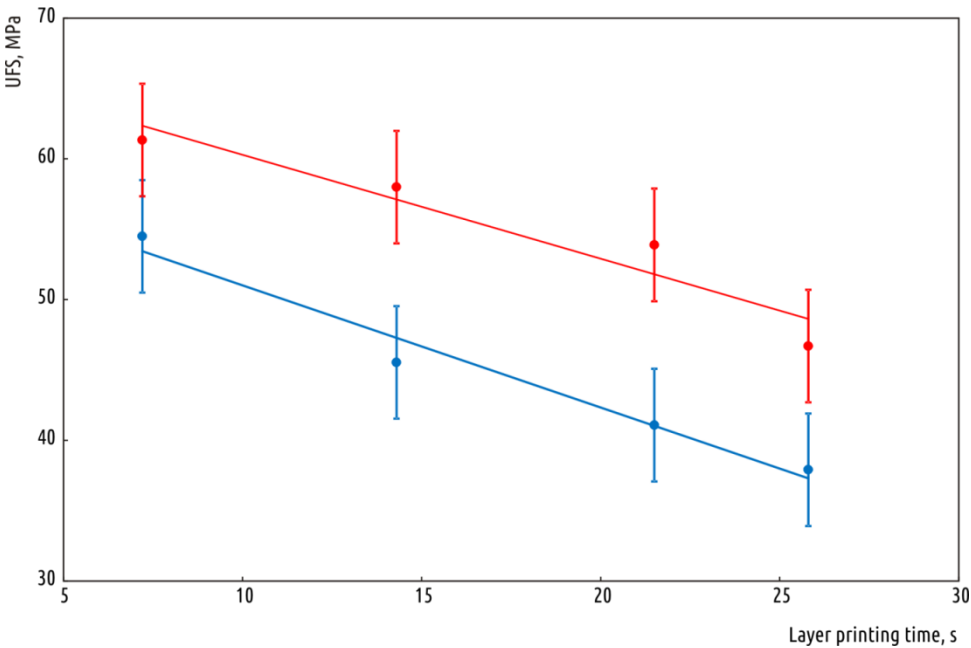


Figure 14. Dependence of layer printing time on sample strength for 210°C (blue) and 250°C (red) prints

4 Generalization of results

4.1 Minimizing the factor space

In order to generalize results above, the following statements can be made. The 3D printed part strength increases with an increase in t_E , with a decrease in the cooling intensity and with a reduction in the time interval between individual layers (when rejecting to print simultaneously several parts or due to a reasonable increase in printing speed). Table 1 contains experimental data of all sample lots tested with rows arranged by t_{sub} ascending. The Figure 15 shows a scatter plot in UFS— t_{SUB} coordinates, which combines averages on all the observations of this study.

Table 1. Experimental data

Lot #	Key	t_E , °C	Feed rate, mm/s	Fan speed, %	n*	Mass, g	t_{SUB} , °C	F_E	UFS, MPa
1	t210f25c100n5	210	25	100	5	15.72	41	0.898	37.9
2	t250f25c100n5	250	25	100	5	16.43	41	0.939	46.7
3	t210f25c100n3	210	25	100	3	15.77	48	0.901	41.1
4	t210f25c100n2	210	25	100	2	15.81	54	0.903	45.5
5	t250f25c100n3	250	25	100	3	16.44	60	0.939	53.9
6	t210f13c100n1	210	12.5	100	1	16.33	61	0.933	54.2
7	t250f13c100n1	250	12.5	100	1	16.79	68	0.960	59.3
8	t200f25c100n1	200	25	100	1	15.46	69	0.883	52.6
9	t250f25c100n2	250	25	100	2	16.50	70	0.943	58.0
10	t210f25c100n1	210	25	100	1	15.97	73	0.913	56.3
11	t220f25c100n1	220	25	100	1	16.14	74	0.922	57.2
12	t230f25c100n1	230	25	100	1	16.39	77	0.937	58.0
13	t210f38c100n1	210	37.5	100	1	14.85	77	0.848	47.2
14	t240f25c100n1	240	25	100	1	16.39	78	0.937	59.1
15	t210f25c50n1	210	25	50	1	15.68	79	0.896	58.9
16	t250f25c100n1	250	25	100	1	16.72	85	0.955	61.3
17	t250f25c50n1	250	25	50	1	16.52	95	0.944	65.0
18	t250f38c100n1	250	37.5	100	1	16.30	104	0.931	68.3
19	t250f50c100n1	250	50	100	1	16.22	111	0.927	69.0
20	t210f25c0n1	210	25	0	1	15.58	124	0.890	64.6
21	t250f25c0n1	250	25	0	1	16.54	138	0.945	71.1

*) Number of samples on the plate

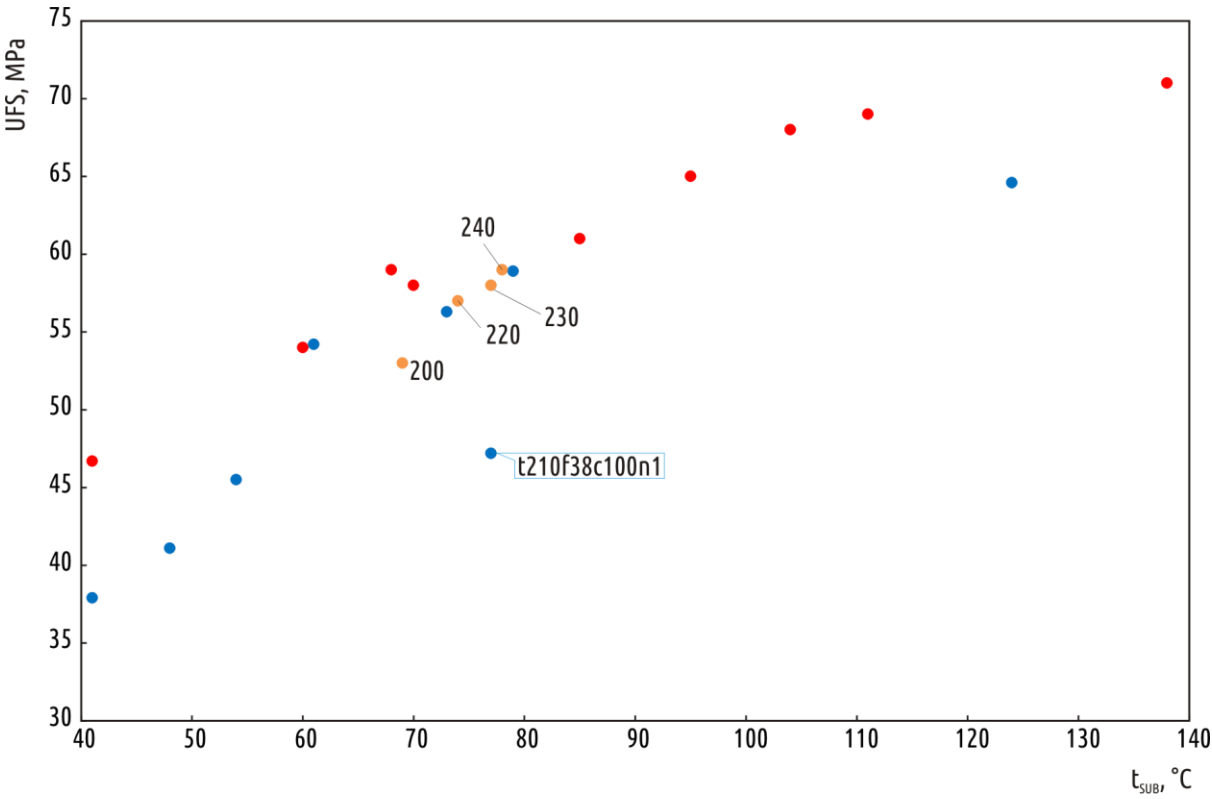


Figure 15. Scatter plot of UFS vs. t_{SUB}

Blue marks are the points corresponding to the printing of samples at a temperature of 210°C, the red ones at a temperature of 250°C. Four orange dots are for 200, 220, 230 and 240 °C from left to right. If lot#13 is excluded as an outlier, then it is possible to approximate all the dots with a single curve. Meanwhile, a better solution is to map all the parameters considered in the work onto a two-dimensional space (Figure 16).

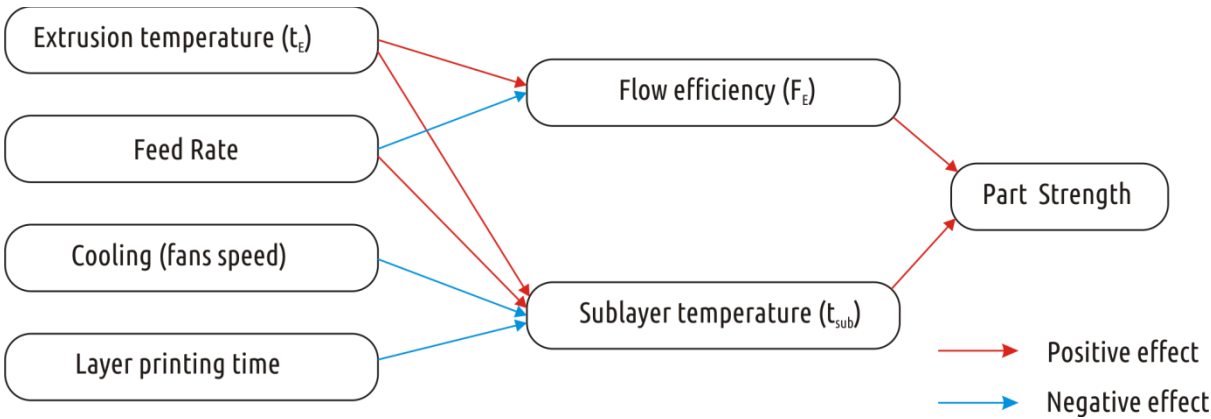


Figure 16. Factors influencing the part strength

The first and most obvious resulting factor becomes the t_{SUB} , which depends on all the parameters observed in the study.

The second resulting parameter can be named “flow efficiency” (F_E). This parameter indicates the real amount of plastic extruded through the nozzle, compared to expected amount calculated by the slicer software. The easiest way to estimate this parameter is to find the ratio between the real mass of the sample and the calculated one (filament density multiplied by 3D model volume; 17.5 g for the samples of current study). The F_E is a reflection of extrusion resistance and it seems to be highly hardware dependent. For a single hardware setup (machine, nozzle) and material the F_E depends on the t_E and on

the feed rate. The F_E explains why the red dots ($t_E=250\text{ }^{\circ}\text{C}$) are generally shifted in upper direction relational to the blue dots ($t_E=210\text{ }^{\circ}\text{C}$) on the UFS vs. t_{SUB} scatterplot (Figure 15).

In this study, the limits of the range of observations of the t_{SUB} are as close as possible to the physical limits. So, obviously, to get the t_{SUB} noticeably lower than 41°C , one can only turn off the bed heating and (or) lower the room temperature. It is possible to obtain a significantly higher t_{SUB} than observed when printing with fans turned off at a t_E of 250°C , for example, by increasing the printing speed. However, it is upper bound with PLA melting temperature; it will be difficult to obtain the part of the desired shape above it.

It also seems quite hard to get a value of F_E lower than ~ 0.85 without getting visible underextrusion defects while keeping feed rate in reasonable limits and without trying to extrude PLA filament at t_E below $210\text{ }^{\circ}\text{C}$. It is also challenging to get a value higher than ~ 0.96 without going beyond part tolerance (it is possible to increase the flow both in slicer and manually in printer menu, but that will cause overextrusion at external boundaries and part going beyond expected dimensions).

UFS dependency on two resulting factors can be described by following regression model:

$$UFS = a + b \times \ln(t_{sub}) + c \times F_E$$

With the following coefficients found by least squares optimization (Table 2) and the R^2 equal to 0.956.

Table 2. Fitting parameters for regression model

Coeff.	Estimate	Standard error	t-value	p-level	Lo. Conf Limit	Up. Conf Limit
A	-153.912	15.30031	-10.0594	0.000000	-186.057	-121.767
B	23.945	1.37579	17.4043	0.000000	21.054	26.835
C	116.580	16.10235	7.2399	0.000001	82.750	150.409

The model is plotted on the figure 16 and the quality of approximation can be evaluated by plot on Figure 18.

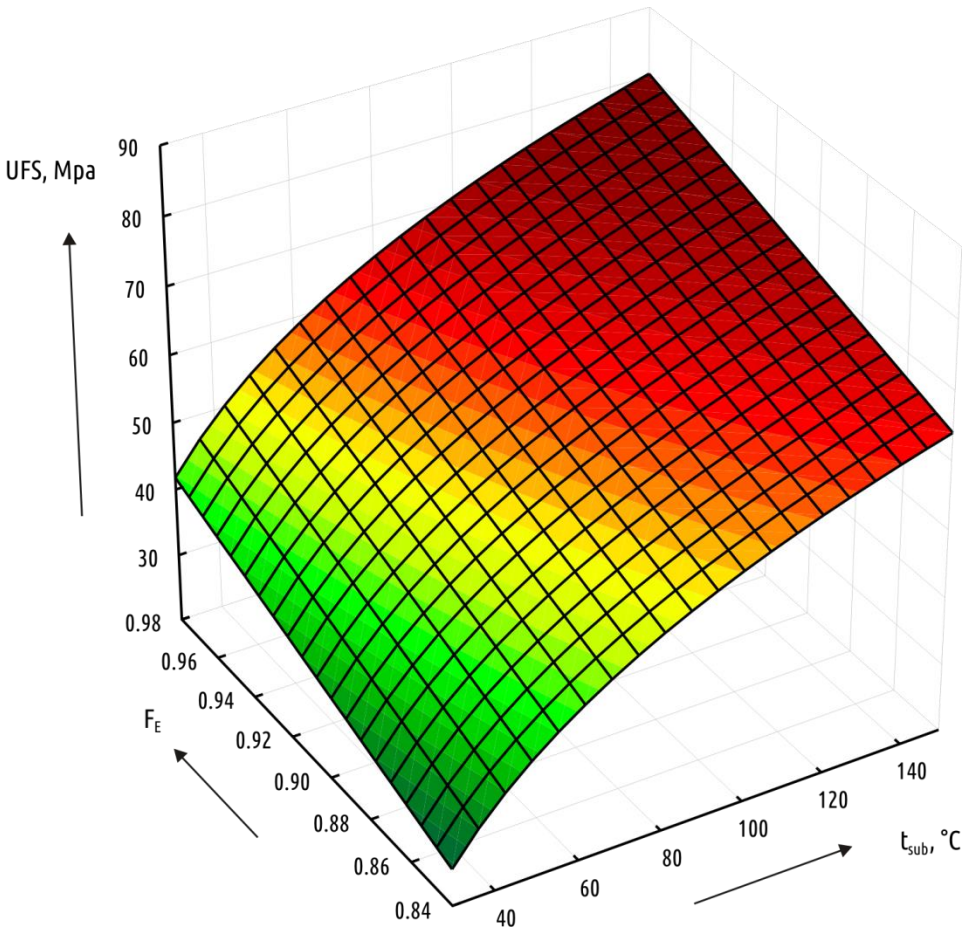


Figure 17. Response surface for regression model $UFL=f(t_{SUB}, F_E)$

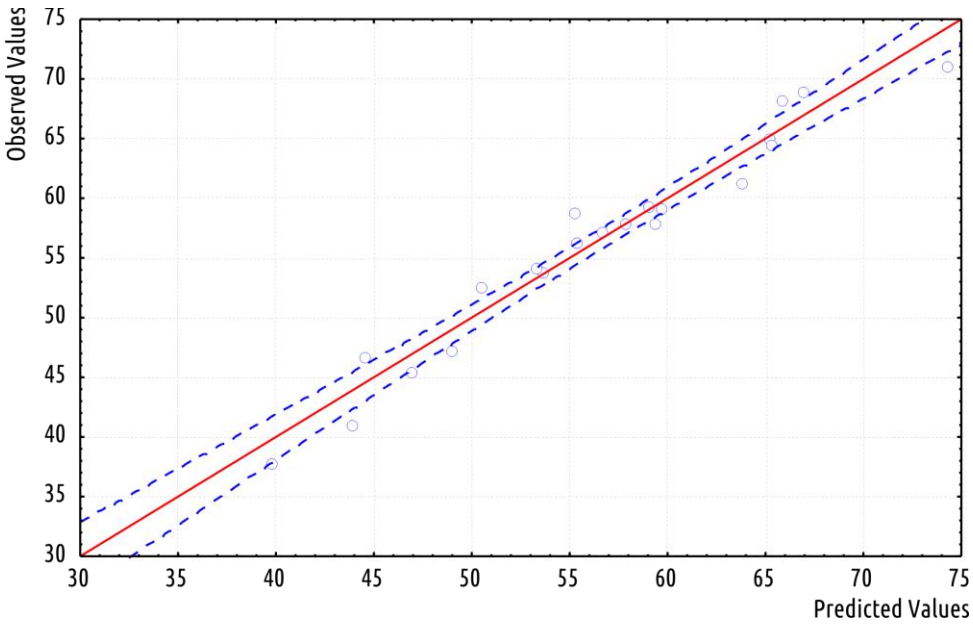


Figure 18. Observed versus predicted values (0.95 confidence interval)

In general, the apparent and significant effect of t_{SUB} on the part strength and also the inability to directly control this parameter raises the question of whether it is advisable to use printers with a controlled temperature chamber or printers with local heating [7, 22 – 24] sublayer for printing with PLA.

4.2 Structure morphology

The temperature conditions of FDM (FFF) process do not only affect measurable bonding strength, but also printed object structure. The boundary formation between individual threads is influenced by technological parameters investigated in this paper, which, as it was mentioned above, can be reduced to two factors: the F_E and the t_{SUB} . The first affects the volume of voids between threads (see figure 5), and the second affects the shape of the voids (see Figure 9).

The most durable sample considered (printed with fans turned off and the t_E of 250°C) contains voids with sections being almost ideal circles (Figure 19).

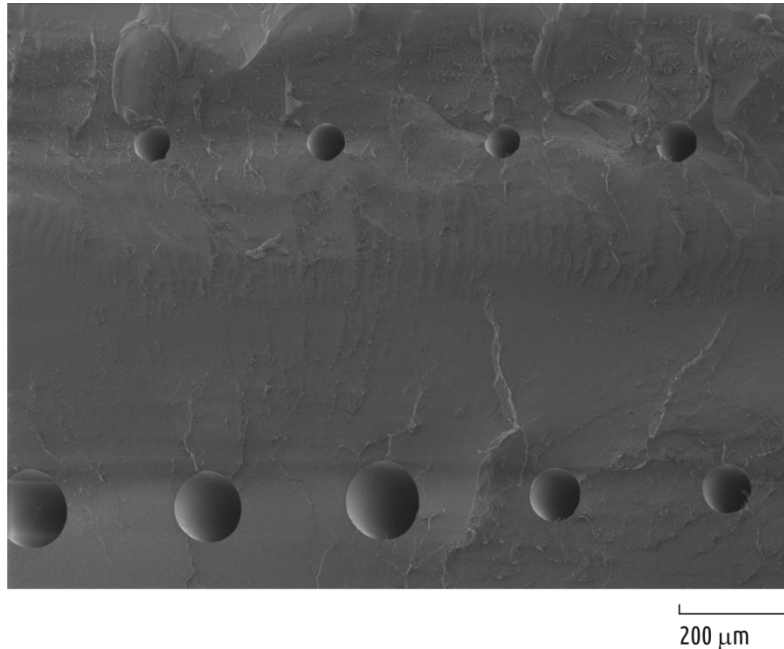


Figure 19. Mesostructure of sample from lot #21

The most suitable explanation for this phenomenon is that boundary formation was dominated by surface tension forces in the liquid phase. None of the cases examined with the thermal imager exhibited the t_{SUB} higher than the melting point of PLA. However, the limited resolution of the device does not allow for measuring the temperature of individual threads. The sublayer thread can be melted when contacting with a hot thread squeezed out of the nozzle. The depth of this fusion obviously depends on both thread temperature (t_E and t_{SUB}), melting depth, and the period when neighboring thread material remains in the liquid phase determines the shape of the void cross-section — from subtle roundings at the angles to complete conversion into a circle.

Let us consider in more detail the process of void formation between the threads forming the product on the example of sample from lot “#18” (Figure 20).

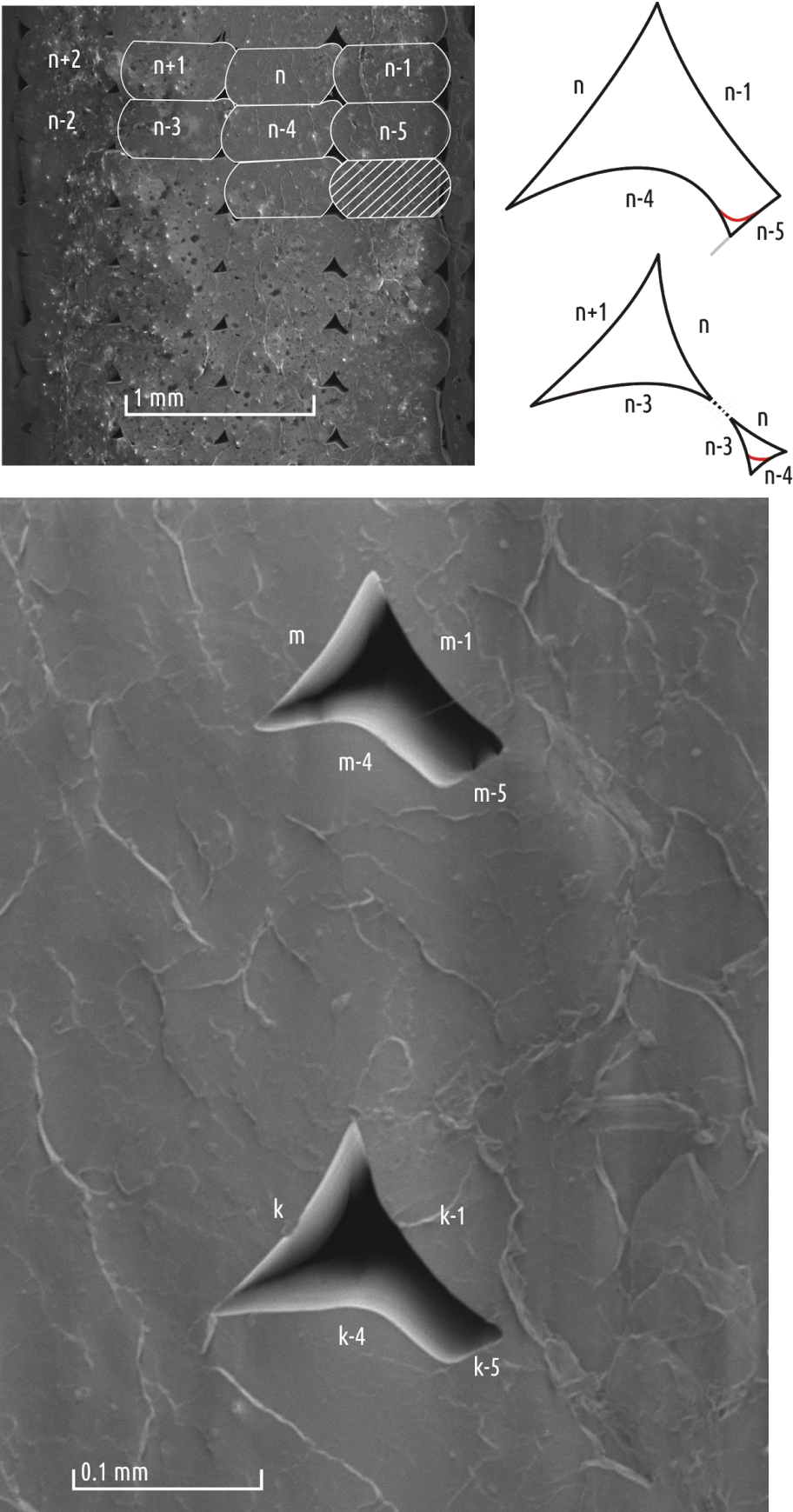


Figure 20. Structure formation (sample from lot#18)

The upper part of the figure shows a fragment obtained in the longitudinal section of the sample magnified at 100×. The sections of individual plastic threads and the printing sequence can be clearly read. The shell is printed inside out, that is, first the thread with the smallest perimeter is laid, and then the next threads forming the layer are laid around it. The letter “ n ” denotes the section of a certain thread, respectively, “ $n-1$ ” and “ $n+1$ ” are its immediate neighbors, laid just before and right after the thread in question. In the current case, each layer consists of four perimeters (the wall thickness of the sample is 2.4 mm, the nozzle diameter is 0.6 mm), thus thread n is laid over the $n-4$ and serves as a substrate for the $n+4$ filament. The cross-section of the filaments of the first (inner) perimeter ($n-1$, $n-5$) is characterized by a symmetrical barrel-like structure: this thread is limited only from the bottom (the previous layer) and from the top (the nozzle); the liquid plastic flows freely in both side directions. When forming subsequent threads, for example, n , restrictions appear not only from above and from below, but also from the side of the previous ($n-1$) thread. The plastic flows freely towards $n+1$ and a vertically symmetric convex wall is formed here, but in the direction of $n-1$ thread, the liquid plastic encounters the previous thread ($n-1$) being an obstacle and bends around it. Accordingly, a somewhat larger amount of plastic flows towards the $n+1$ side than towards the $n-1$ side. At the bottom, thread n contacts a relatively cold substrate ($n-4$), whereas on the top it is pressed with a hot nozzle and hot liquid plastic still in the nozzle. Accordingly, when the liquid plastic bends around previous thread, more material flows upwards rather than downwards, causing a characteristic step (the upper part of the boundary $n-n-1$ or $n-4-n-5$). The step occurs when the second and subsequent threads are deposited, and, with each subsequent thread, this step increases. Therefore, when depositing the thread n the plastic flowing towards $n+1$ touches the step from $n-3$ to $n-4$ and the void is divided into two parts. Thus, the geometry of the void is formed to the right and left of the thread n (Figure 20, top, right). Plastic of the previous threads should start melting from contact with the liquid plastic at the boundary with the highest temperature, and this boundary is the contact point between the step and the preceding thread $n-4-n-5$ and $n-3-n-4$, and it is possible to observe the formation of the first fillets, as can be seen in the photographs obtained at 1000× zoom (Figure 20, bottom).

A similar picture can be observed at the sample from lot #19 (Figure 21). The difference between samples from lots #18 and #19 is in increased printing speed (37.5 and 50 mm/s, respectively), which caused, on one side, some decrease of flow efficiency and an increase in registered t_{SUB} on the other. The flow efficiency drop resulted in certain increases in the void area and, more significantly, in the fact that the voids between the second and third, as well as between the third and fourth perimeters were not divided into two channels, as in the sample from lot #18. The rise of t_{SUB} led to the fact that fillets appeared not only in $n-4-n-5$ nodes, but also in $n-5-n-1$ and $n-n-1$ (Figure 21, below).

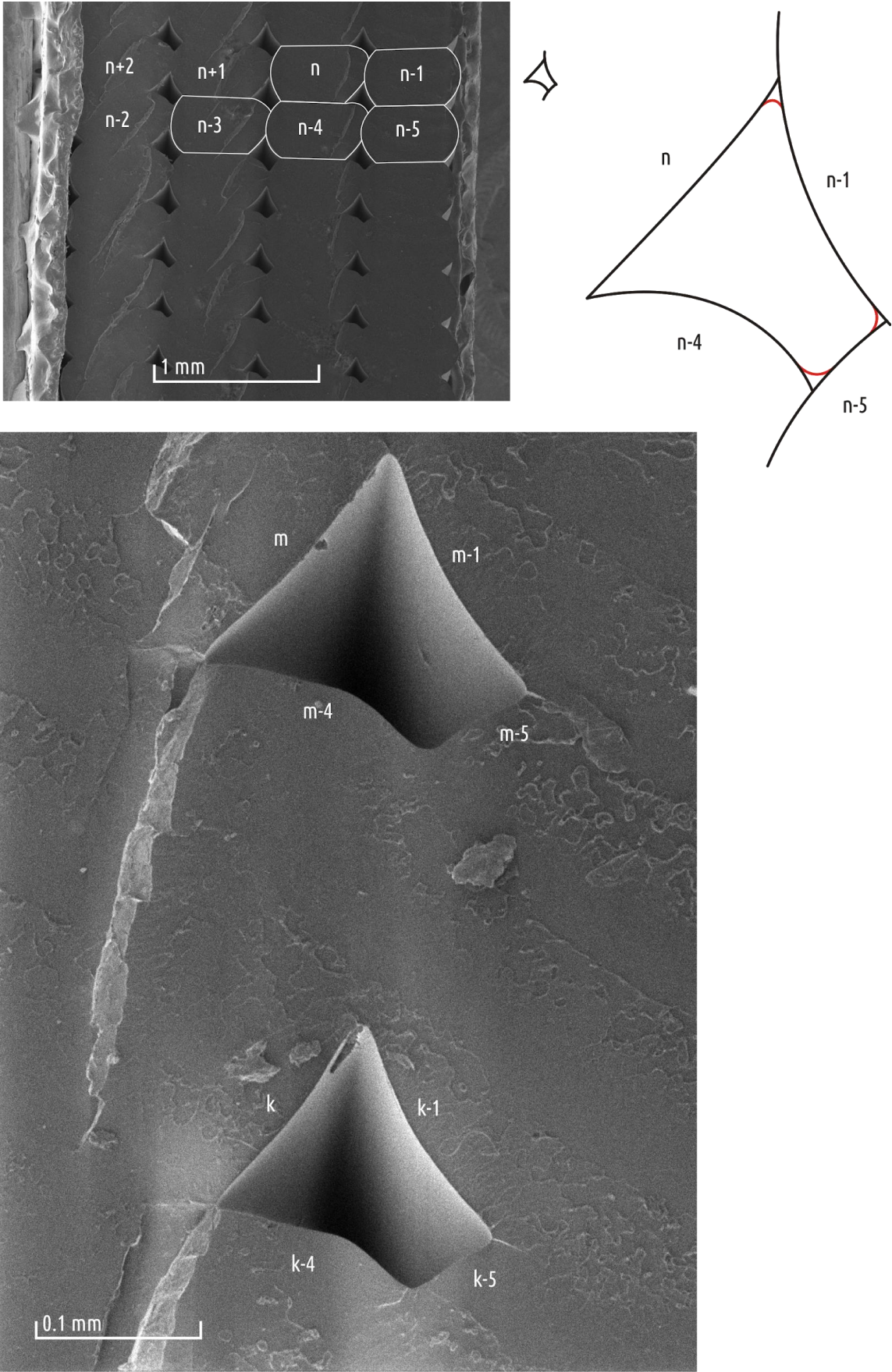


Figure 21. Formation of the structure (sample from lot #19)

Further increase of t_{SUB} (sample from lot #20) caused fillets to appear already at the $n-n-1$ junction (the lower part of the boundary between the next and previous thread), and the two nodes $n-4-n-5$ and $n-4-n-1$ merge (Figure 22).

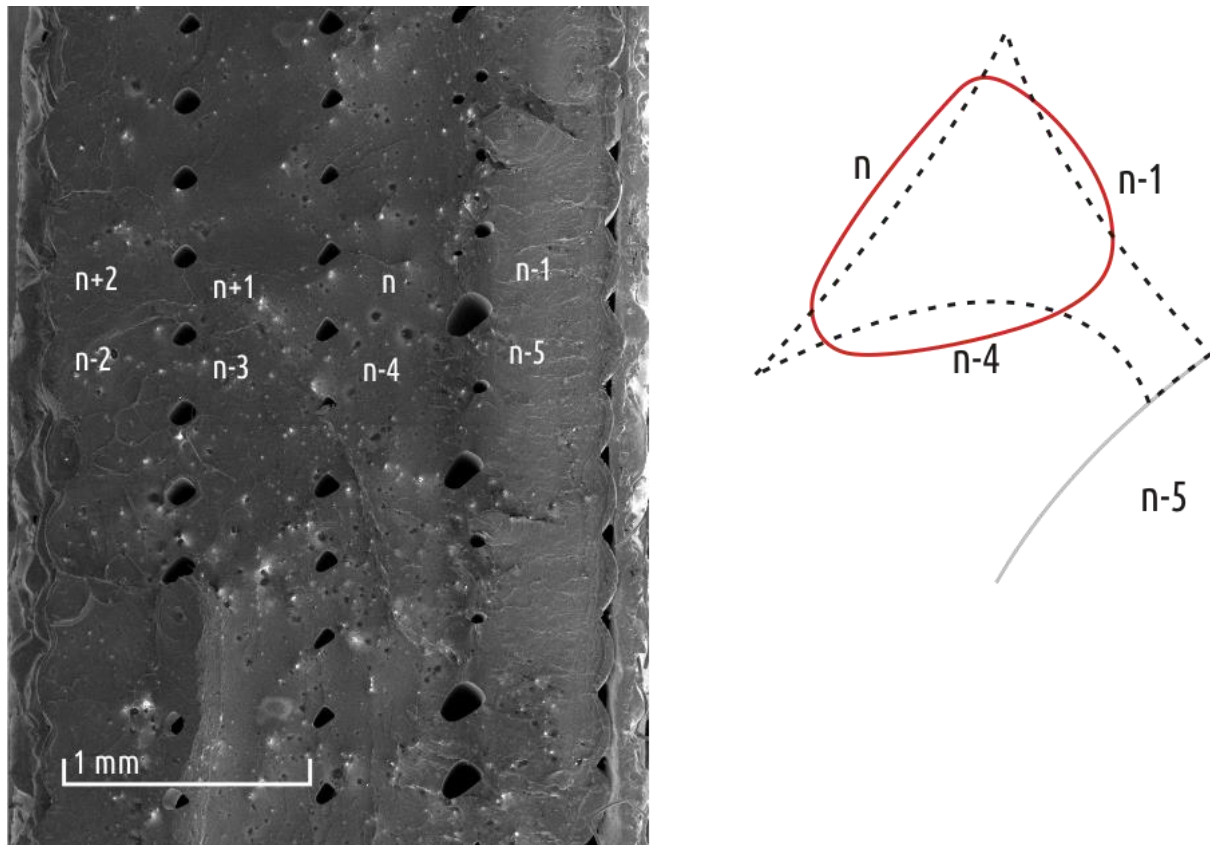


Figure 22. Formation of the structure (sample from lot #20)

Finally, as the t_{SUB} rises further to 138 °C (sample from lot #21), the shape of the cross-section approaches the ideal circle, indicating that after applying the thread n the entire system $n-n-1-n-4-n-5$ is in a liquid state for a sufficient time to complete the smoothing of the boundaries (see Figure 19). Generalized influence of flow efficiency and the t_{SUB} can be graphically expressed by the schematic on Figure 23.

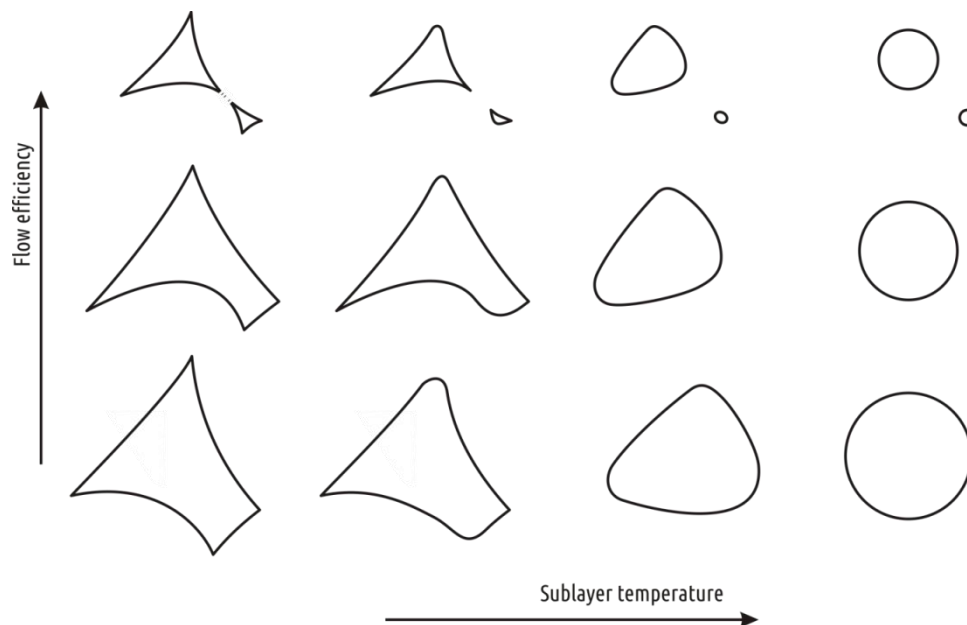


Figure 23. Morphology of a void cross-section depending on two factors

There is an interesting fact: the most drastic metamorphoses in inter-thread boundaries structure visible with SEM occurs when t_{SUB} gets close to the material melting point, but these changes are not followed by major changes in the part strength. The most steep part of UFS w.r.t. t_{SUB} curve shows a qualitative change in part strength earlier, when increasing t_{SUB} from minimum to approximately 75...80 °C leads to stronger cohesion without affecting visible voids structure.

4.3 Comparing with reference

Comparing test results with reference samples printed with maximum dimension oriented along Y axis (and, thus, with load applied along threads) is of great practical interest.

Comparison of the bending curves of the typical samples with the reference one (Figure 24) allows us to draw a number of conclusions. As typical, representatives of following lots could be considered. Lot #21 provides “best” sample (A), lot #10 provides an “average” sample (B), and, finally, lot #1 is the worst observed case.

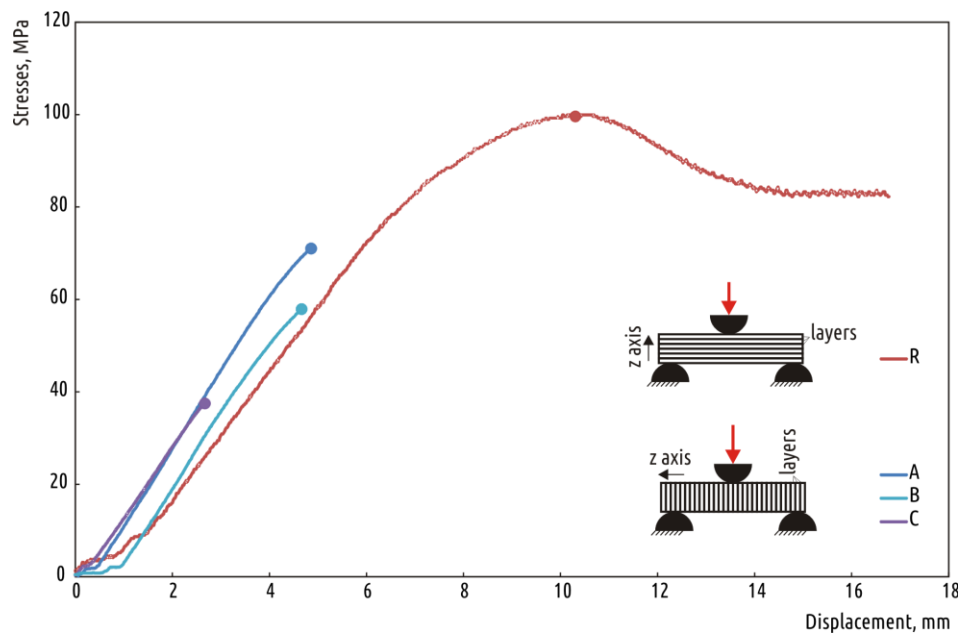


Figure 24. Test curves for samples loaded along (R) and across (A, B and C) the layers

Reference samples were fractured with a significant plastic deformation (Figure 24, curve R), while in the samples from the main set the plastic deformations are negligible (Figure 24, curves A, B and C). As it can be seen from the curves, optimizing parameters that affect the temperature conditions during the formation of interlayer bonds allows for a significant reduction in the gap in strength between testing along and across the layers. However, a complete solution to the anisotropy problem of FDM (FFF) products is not reached, since in addition to quantitative differences in strength along and across the layers, qualitative differences remain (the presence and absence of a plastic zone). Comparable results have been obtained in [24].

4.4 Comparing with previous study

Another useful validation is comparison with the results of a previous study [17] in which PLA samples of identical geometry obtained with a standard t_E of 210°C and fixed print speed (25 mm/sec) were tested using nozzles of different diameters, with varied layer thickness. For a 0.6 mm nozzle, data for layer thickness values in the range from 0.1 to 0.6 mm were obtained, while in the whole range decrease in the sample strength was registered along with layer thickness increase. Accordingly, the average maximum (68 MPa) of the strength of the nozzle was 0.6 was recorded for the layer 0.1 mm, which is practically the same as the maximum of the current study (71.1 MPa). Decreasing layer height results in an F_E increase, however, this increase at transition from “nozzle 0.6 mm - layer 0.3” to “nozzle 0.6 mm - 0.1 mm layer” configuration is insignificant (0.913-0.920) and cannot explain such a great increase in strength. Moreover, the second of the resultant parameters of the present study, t_{SUB} , decreases when thinner layers are printed. Thus, the factors studied in this paper do not completely determine the conditions for the formation of the bond between the layers and, accordingly, the strength of the product. Another important factor determining the cohesion strength of the layers remains the N/L ratio, considered in [17].

Case studies

The following case studies were implemented to demonstrate the practical usefulness of the results obtained. For three tasks, parts were designed to be printed using desktop 3D printer, two lots of test parts were manufactured for each case. The first lot (A) was made with t_E of 210°C and maximum cooling intensity. The second lot (B) was printed with t_E of 250°C and with fans switched off. All other technological parameters were kept intact: 25 mm/s linear speed, bed temperature 60°C, layer thickness

equal to 0.3 mm. The parts were made with the same 3D printer and using the same nozzle (0.6 mm), which carried out the primary research samples fabrication. Wall thickness was set so that the whole part consisted of a shell only. All parts were made from PLA.

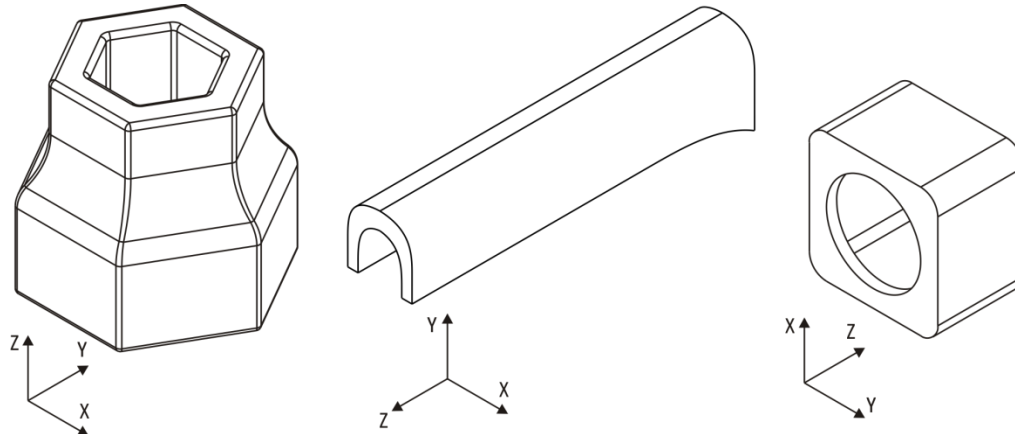


Figure 25. Case study parts and their orientation during fabrication

Case 1. Box spanner adapter

This part (Figure 25, left) serves as an adapter, allowing the use of standard 32 mm head for tightening 30 mm nuts. Products were tested using a beam-type torque wrench while tightening an M20 nut. During the test, the destructing torque was recorded when the adapter cracked or deformed permanently. The measuring accuracy using the torque wrench of this type is not high (unit value is 10 N·m), but that is sufficient for comparing two significantly different technological modes of printing.



Figure 26. Fixtures for testing the adapter strength

Lot A samples destruction happened at the moment of 40...70 N·m with a mean of 48 N·m, while the products from lot B exhibited 100...120 N·m with an average of 110 N·m. Destruction nature also differs (figure): in the case of lot A, the nut cap is deformed, while in lot B samples cracks appear in the maximally loaded areas.

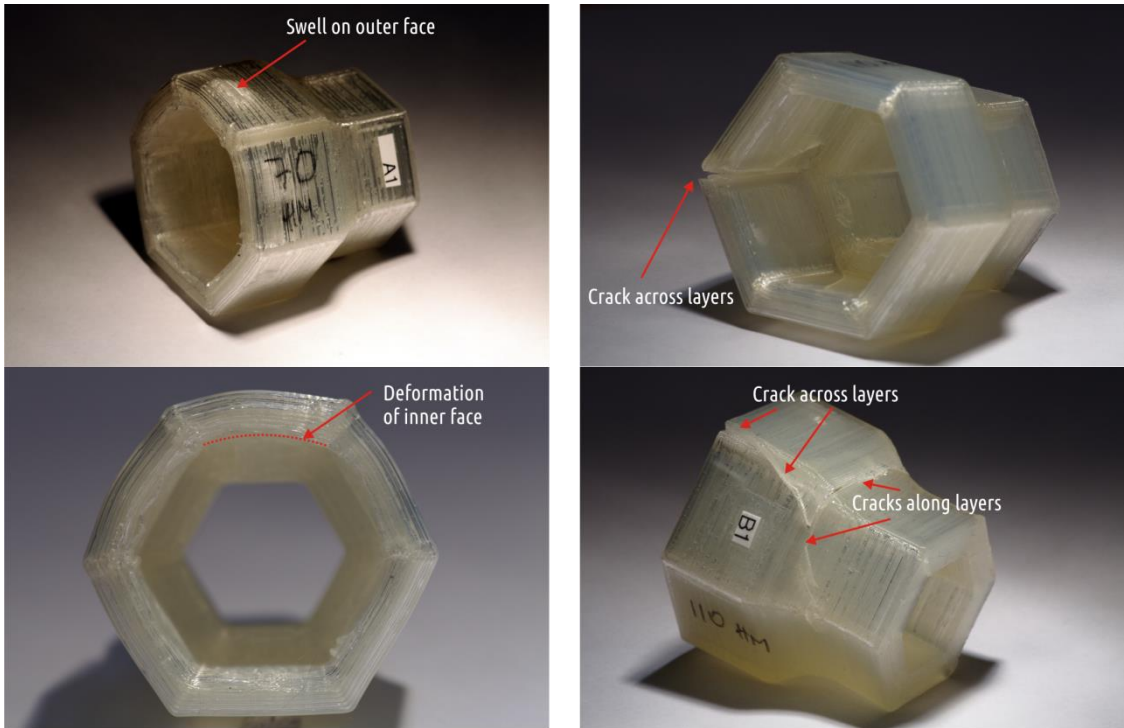


Figure 27. Destruction of a sample from lot A (left) and B (right)

Case 2. Spike heel enclosure

This product (Figure 25, middle) is designed to protect expensive women's shoes heels in the aggressive environment, such as public transport or cobblestone.

The nature of the intended use of the product implies periodic shock loads, which defined the test method for that case. An impact tester POE 2000 Instron was used for testing and comparing strength of the products from two lots.

The data in load w.r.t time curves were recorded; typical representatives from both lots are presented in the Figure 28.

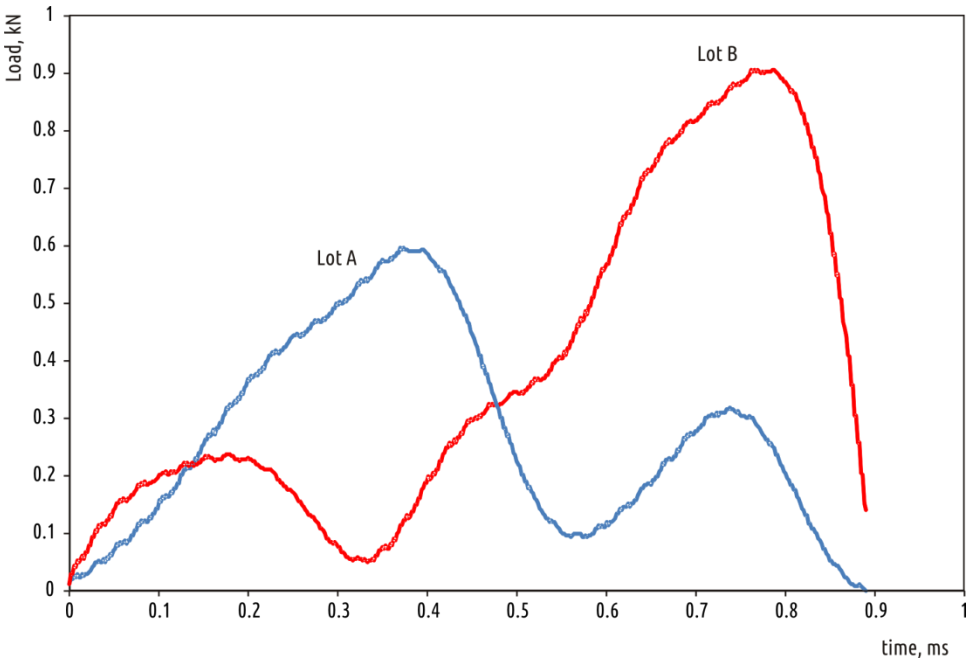


Figure 28. Impact testing (Case 2)

The testing product has a U-shape cross-section, thus the impact testing curves includes two pikes.

The maximum loads observed are 590...684 N for lot A and 850...953 N for lot B samples.

Case 3. Device housing

Housing (Figure 25, right) was printed in a shape of a parallelepiped with square base and dimensions of 30×30×20 mm. One of square faces features a circular hole in the center, another one is fully open. Samples were tested for maximum compression force using the same universal test machine that was used for testing of samples in the main part of the study. Compression is carried out between two flat parallel plates, while the object was placed on the bottom of the plate in the same orientation in which it was printed (layers were parallel plates).

Deformation nature does not differ significantly in these two cases (Figure 29): the zone of elastic deformation is followed by a short zone of uniform plastic deformation, the end of which corresponds to the peak load value. Further reduction of effort occurs due to loss of the product buckling.

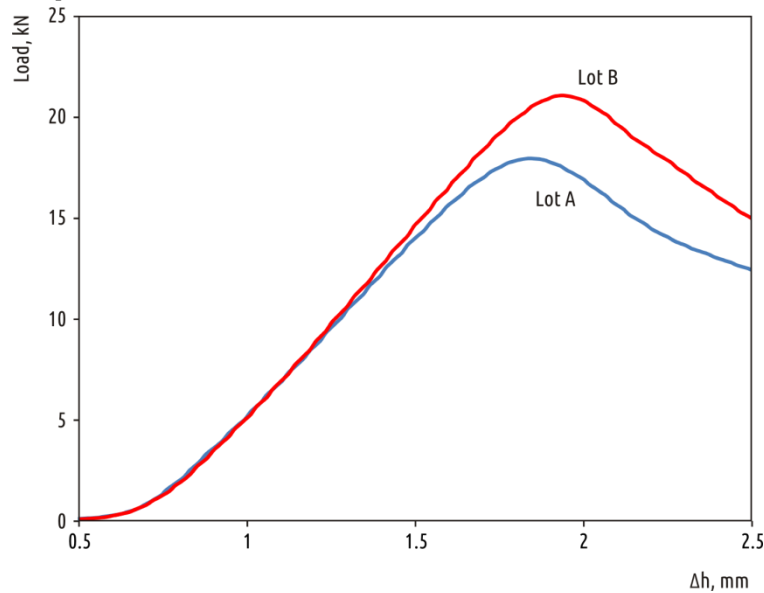


Figure 29. Compression testing (Case 3)

The average maximum force for lot A amounted to 17.86 kN, and 21.07 kN for lot B.

For all the three cases parts fabricated with elevated t_E and fans switched off (lots B) demonstrated noticeable better performance than parts fabricated with default conditions.

Conclusions

1. Changing temperature conditions of the layer-by-layer polymer deposition process has a significant effect on the cohesion strength of the layers and, accordingly, on the strength of the part. It is shown that the optimization of the FDM (FFF) process parameters responsible for temperature conditions makes it possible to approximate the strength of the interlayer cohesion to the bulk material strength.
2. Increasing extrusion temperature in the range investigated positively affects the part strength. Out of all process parameters studied, the extrusion temperature is the only factor whose effect on the strength depends to a small extent on the size and shape of the product (single layer printing time). The increase in part strength is explained both by activation of temperature-dependent processes of bond formation between the layers, and by an increase in the volume of the extruded plastic and, correspondingly, by a decrease in cavities and voids volume at the interface of the adjacent layers.
3. Cooling conditions (the intensity of fans blowing) also have a significant effect on the part strength. The effect of this process parameter strongly depends on part dimensions, more precisely, on the time of printing of a separate layer: if it is large enough, it cools down naturally.
4. Printing speed has an ambiguous effect on the part strength. On one hand, with increasing speed, the efficiency of extrusion decreases (the actual amount of material squeezed through the nozzle per unit of time); on the other hand, as the printing speed increases, the time interval between printing the layers is reduced.
5. Increase in the time interval between the printing of two adjacent layers adversely affects the part strength.
6. The influence of all parameters considered on the part strength can be expressed through two generalizing factors. The first factor determining the ratio of the amount of really extruded plastic to the calculated one is called flow efficiency (F_E). Its value is determined by the joint effect of extrusion temperature and printing speed. The second generalizing factor is the temperature of the previous layer (sublayer), depending with different coefficients on all four parameters considered in the work.
7. A regression model is proposed that adequately ($R^2 = 0.956$) describes the effect of F_E and t_{SUB} on the printed part strength.
8. These two factors (F_E and t_{SUB}) determine the formation of the part mesostructure (the geometry of the boundaries between individual threads).

Acknowledgments

The work was carried out with financial support from the Ministry of Education and Science of the Russian Federation in the framework of increase Competitiveness Program of NUST "MISIS", implemented by a governmental decree dated 16th of March 2013, No. 211.
The authors express their heartfelt thanks to their colleagues for their support.

Author Contributions

Vladimir E. Kuznetsov and Alexey N. Solonin conceived and designed the experiments; Azamat G. Tavitov performed the experiments; Vladimir E. Kuznetsov and Oleg D. Urzhumtsev analyzed the data; Alexey N. Solonin contributed analysis tools; Anna H. Vakulik performed the case study; Vladimir E. Kuznetsov wrote the paper.

Conflicts of Interest

The authors declare no conflict of interest.

References

1. John Ryan C. Dizon, Alejandro H. Espera, Qiyi Chen, Rigoberto C. Advincula, Mechanical characterization of 3D-printed polymers, *Additive Manufacturing*, Volume 20, 2018, Pages 44-67, <https://doi.org/10.1016/j.addma.2017.12.002>.
2. Crump S., Fast, Precise, Safe Prototype with FDM, *ASME PED*, vol. 50 (1991), pp. 53-60
3. Crump S., The extrusion process of fused deposition modeling, – *Proc. of 3rd Intl. Conf. on Rapid Prototyping*, 1992
4. Jones R., Haufe P., Sells E., Iravani P., Olliver V., Palmer C., Bowyer A., RepRap – the replicating rapid prototyper. *Robotica*, 2011, Vol. 29, Issue 1, pp. 177-191
doi:10.1017/S026357471000069X;
5. Tymrak, B. M., Kreiger, M., & Pearce, J. M. (2014). Mechanical properties of components fabricated with open-source 3-D printers under realistic environmental conditions. *Materials and Design*, 58, 242–246. <https://doi.org/10.1016/j.matdes.2014.02.038>
6. Costa, S. F., Duarte, F. M., & Covas, J. A. (2017). Estimation of filament temperature and adhesion development in fused deposition techniques. *Journal of Materials Processing Technology*, 245, 167–179.
7. Go, J., Schiffres, S. N., Stevens, A. G., & Hart, A. J. (2017). Rate limits of additive manufacturing by fused filament fabrication and guidelines for high-throughput system design. *Additive Manufacturing*, 16, 1–11. <https://doi.org/10.1016/j.addma.2017.03.007>
8. Ćwikła, G., Grabowik, C., Kalinowski, K., Paprocka, I., & Ociepka, P. (2017). The influence of printing parameters on selected mechanical properties of FDM/FFF 3D-printed parts. *IOP Conference Series: Materials Science and Engineering*, 227(1). <https://doi.org/10.1088/1757-899X/227/1/012033>
9. T. Letcher, M. Waytashek Material property testing of 3D-printed specimen in PLA on an entry-level 3D printer. *Proceedings of the ASME 2014 International Mechanical Engineering Congress & Exposition (IMECE2014)*, Montreal (2014)
10. Ahn, S. -, Montero, M., Odell, D., Roundy, S., & Wright, P. K. (2002). Anisotropic material properties of fused deposition modeling ABS. *Rapid Prototyping Journal*, 8(4), 248-257.
10.1108/13552540210441166
11. Melenka, G. W., Cheung, B. K. O., Schofield, J. S., Dawson, M. R., & Carey, J. P. (2016). Evaluation and prediction of the tensile properties of continuous fiber-reinforced 3D printed structures. *Composite Structures*, 153, 866-875. 10.1016/j.compstruct.2016.07.018
12. J. Cantrell, S. Rohde, D. Damiani, R. Gurnani, L. DiSandro, J. Anton, A. Young, A. Jerez, D. Steinbach, C. Kroese, P. Ifju Experimental characterization of the mechanical properties of 3D printed ABS and polycarbonate parts S. Yoshida, L. Lamberti, C. Sciammarella (Eds.), *Advancement of Optical Methods in Experimental Mechanics – Conference Proceedings of the Society for Experimental Mechanics Series*, vol. 3, Springer, Cham (2017)
13. Costa, S. F., Duarte, F. M., & Covas, J. A. (2017). Estimation of filament temperature and adhesion development in fused deposition techniques. *Journal of Materials Processing Technology*, 245, 167–179. <https://doi.org/10.1016/j.jmatprotec.2017.02.026>
14. Abbott, A. C., Tandon, G. P., Bradford, R. L., Koerner, H., & Baur, J. W. (2018). Process-structure-property effects on ABS bond strength in fused filament fabrication. *Additive Manufacturing*, 19, 29–38. <https://doi.org/10.1016/j.addma.2017.11.002>
15. Grabowik, C., Kalinowski, K., Ćwikła, G., Paprocka, I., & Kogut, P. (2017). Tensile tests of specimens made of selected group of the filament materials manufactured with FDM method. *MATEC Web of Conferences*, 112, 4017. <https://doi.org/10.1051/mateconf/201711204017>
16. ASTM: D638 tensile testing standard

17. Kuznetsov, V.; Solonin, A.N.; Urzhumtsev, O.D.; Schilling, R.; Tavitov, A.G. Strength of PLA Components Fabricated with Fused Deposition Technology Using a Desktop 3D Printer as a Function of Geometrical Parameters of the Process. *Polymers* 2018, *10*, 313
18. <https://github.com/daid/LegacyCura>
19. <http://shop.bondtech.se/en/extruders/bondtech-qr-30-universal.html>
20. <http://3dsolex.com/product-category/ultimaker-kits/>
21. <https://www.flir.com/products/flir-tools/>
22. Kishore, V., Ajinjeru, C., Nycz, A., Post, B., Lindahl, J., Kunc, V., & Duty, C. (2017). Infrared preheating to improve interlayer strength of big area additive manufacturing (BAAM) components. *Additive Manufacturing*, 14, 7–12. <https://doi.org/10.1016/j.ADDMA.2016.11.008>
23. Go, J., & Hart, A. J. (2017). Fast Desktop-Scale Extrusion Additive Manufacturing. *Additive Manufacturing*, 18, 276–284. <https://doi.org/10.1016/j.addma.2017.10.016>
24. Song, Y., Li, Y., Song, W., Yee, K., Lee, K. Y., & Tagarielli, V. L. (2017). Measurements of the mechanical response of unidirectional 3D-printed PLA. *Materials and Design*, 123, 154–164. <https://doi.org/10.1016/j.matdes.2017.03.051>