

# A SEQUENTIAL ALGORITHM FOR SIGNAL SEGMENTATION

Paulo Hubert (phubert@ime.usp.br)<sup>\*1</sup>, Linilson Padovese (lrpadovese@usp.br)<sup>2</sup>  
and Julio Stern (jstern@ime.usp.br)<sup>1</sup>

<sup>1</sup> Instituto de Matematica e Estatística - University of Sao Paulo (IME-USP)

<sup>2</sup> Escola Politécnica - University of Sao Paulo (EP-USP)

\* Corresponding author

## Abstract

The problem of event detection in general noisy signals arises in many applications; usually, either a functional form for the event is available, or a previous annotated sample with instances of the event that can be used to train a classification algorithm. There are situations, however, where neither functional forms nor annotated samples are available; then it is necessary to apply other strategies to separate and characterize events. In this work, we analyze 15 minute-long samples of an acoustic signal, and are interested in separating sections, or segments, of the signal which are likely to contain significative events. For that, we apply a sequential algorithm with the only assumption that an event alters the energy of the signal. The algorithm is entirely based on Bayesian methods.

**Keywords** signal processing; bayesian methods; subaquatic audio; hydrophone; unsupervised learning

## 1 Introduction

Signal processing is a field of intense research, both in engineering, physics and medicine<sup>1</sup>, and in the statistical and MAXENT literature [Bretthorst (1988)] [Jaynes (1987)] [Ruanaidh (1996)]. The most recurrent problems in the field are signal estimation, model comparison, and signal detection [Bretthorst (1990A)] [Bretthorst (1990B)] [Bretthorst (1990C)]: in signal estimation, given a functional form for the signal (for instance, an exponentially decaying tonal model) and a (discretized) sample, the researcher wants to estimate the functional form's parameters (the rate of decay, the fundamental frequency). In model comparison, there are different possible functional forms for the signal, and given one or more samples, one is interested in selecting the most adequate model. In signal detection, the researcher is given a sample of the signal, and must decide if a given functional form (which we might call an *event*) is or is not present.

These situations arise typically when the researcher has some control over the process of data acquisition. Namely, she usually is well aware of the presence of the event of interest in the sample, or knows precisely the kind of event she is looking for (and / or its duration). In these situations, previous works from the 1980s and 1990s [Jaynes (1987)] [Bretthorst (1990A)] [Bretthorst (1990B)] [Bretthorst (1990C)] have successfully applied maximum entropy and bayesian methods to solve the basic problems of signal estimation, model comparison and signal detection.

On the other hand, there are situations in which the researcher has very little information about the occurrence times or precise functional form of events. This is the case in this work.

We analyze samples of a subaquatic audio recording obtained by the *OceanPod*, a hydrophone developed by the Laboratory of Acoustics and Environment (LACMAM) at EP-USP. The OceanPod is capable of storing 5 months of a digital signal sampled with a frequency of 11.025 Hz<sup>2</sup>.

In january, 2015, one OceanPod was first installed in the region of *Parque da Laje*, a marine preservation park in the brazilian coast, in the region of Santos, SP. It is kept at a depth of 20 meters, and after a period ranging from 30 to 90 days it is retrieved for data extraction. After the

<sup>1</sup>For a quick and interesting exposition on the applications of signal processing, see for instance <https://signalprocessingsociety.org/our-story/signal-processing-101>. For subaquatic signal processing, see [Etter (2013)].

<sup>2</sup>More information about the OceanPod can be found at <http://lacmam.poli.usp.br/Submarina.html>

data is extracted, the hydrophone is reinserted at the same spot. Several of these data acquisition operations have been made from 2015 to the present time, and are still occurring.

When analyzing such data, one has very little information to work with. There is no exhaustive list of possible events that might be taking place, neither there is information about times or duration of their occurrences. If the analyst is looking for a very specific event (in terms of functional form either in time or frequency domain), it might be possible to design a (unsupervised) detection algorithm tailored to this functional form; even so, however, the lack of information about the starting times of the events make the detection task very computationally intensive, given the sparsity of subaquatic acoustic events[Hubert (2017)].

A natural approach is then to, first and foremost, separate sections from the signal that are likely to contain some event (as opposed to sections containing noise only). The underwater oceanic environment is very economic in this sense: there can be periods of many minutes (even hours) where nothing but the waves (and the omnipresent sound of shrimps and barnacles clapping and clicking) can be heard. This indicates that, rather than processing the entire signal in search of an event, it would be much better to first obtain sections where we believe something is happening, and then try to figure out exactly what it is.

This problem is known in the literature as **signal segmentation**, and shows up in different contexts [Makowsky (2014)][Ukil (2006)][Schwartzman (2011)][Kuntamalla (2014)]. In the specific context of audio segmentation, [Theodorou (2014)] presents a review of the algorithms often applied to solve this problem. These are divided in three categories: the distance-based segmentation, the model-based segmentation, and hybrid techniques. The distance-based approach works directly with the audio waveform (amplitudes in time domain), and assumes nothing about the forms of the segments; the model-based segmentation, on the other hand, starts with a collection of models, and works by training a classification algorithm on previously annotated data. The hybrid approach applies both distance-based and model-based approaches in a single framework.

In this paper we propose an algorithm that can be classified as distance-based, in the sense that it does not assume a collection of models, nor does it use any pre-annotated samples. We formulate the problem in a very general form, and adopt a maximum entropy Bayesian approach to propose a solution. We argue that this theoretical framework is specially adequate for the situation of scarce information, since from maximum entropy we learn how to avoid insidious and implicit assumptions to sneak into the model, and from Bayesian inference we learn how to make the best use of whatever prior information is available.

Also, the maximum entropy Bayesian approach allows us to work from first principles, avoiding the introduction of *ad hoc* procedures. We work our way from the assumptions to the final method of solution, using little more than the basic theorems of probability theory, and making explicit each and every assumption we make about the signal we are analyzing.

The rest of the paper is organized as follows: in the next section, we introduce our main assumption and build the first part of the segmentation procedure. Section 3 completely defines our segmentation algorithm. Section 4 compares our algorithm with an alternative from the literature, using simulated data, and section 5 does the same comparison in a few samples from the actual signal obtained from the OceanPod. Section 6 concludes the paper.

## 2 Bayesian model for power switch

Suppose we are given a discretely sampled signal  $y \in \mathbb{R}^N$  corrupted with noise. Given a sampling frequency rate  $f_s$ , this signal corresponds to a total duration of  $T = N \cdot f_s$  seconds. We assume that the signal is stationary with 0 mean amplitude,  $E(y_i) = 0$ , and finite power  $Var(y_i) = \sigma_0^2 < \infty$ .

Now let's imagine that, at instant  $\bar{t} \in [0, T]$ , some event has started. Our only assumption is that, whatever the particular nature of this event, it causes a change in the total signal power; this is a rather reasonable assumption, since for the combination of two random variables to have the same variance as one of its components, it is necessary that the variables have an exact covariance of  $\sigma_1^2/2$ , where  $\sigma_1^2$  is the variance of either one of the variables.

If we assume only that the signal have 0 mean amplitude and finite power, the maximum entropy principle leads us to choose a Gaussian probabilistic model for  $y$ [Jaynes (1987)]. The maximum entropy principle indicates that, given what is known about a random variable, one must choose the probabilistic model  $p$  that maximizes the entropy  $H(p) = -\int p(x)\log(p(x))dx$ , subject to the constraints that reflect our prior knowledge about the variable; adoption of this principle avoids the insidious inclusion of unwanted and / or unwarranted assumptions about the data in the model's form [Jaynes (1982)].

In our case, assuming the change of variance at  $t = \bar{t}$ , we write the model

$$y_i \sim \begin{cases} \mathcal{N}(0, \sigma_0^2) & \text{if } i \leq \bar{t} \\ \mathcal{N}(0, \delta\sigma_0^2) & \text{if } i > \bar{t} \end{cases}$$

The parameter  $\delta$  represents the ratio between the variances of the two signal sections or segments.

Our goal is to estimate the value of  $\bar{t}$ , the time when the event starts. To accomplish that, we start by writing the likelihood

$$\mathcal{L}(\bar{t}, \sigma_0^2, \delta|y) = (2\pi\sigma_0^2)^{-\frac{N}{2}} \delta^{-\frac{N-\bar{t}}{2}} \exp \left[ -\frac{\sum_{i=1}^{\bar{t}} y_i^2}{2\sigma_0^2} - \frac{\sum_{i=\bar{t}+1}^N y_i^2}{2\delta\sigma_0^2} \right] \quad (1)$$

To keep our model as general as possible, we do not assume any prior information about  $\delta$  (i.e., we do not know anything about the SNR of the possible events). In Bayesian terms, this amounts to adopting a non-informative (improper) uniform prior for  $\delta$ . Using this prior, we are able to analytically integrate equation 1 and obtain

$$\mathcal{L}(\bar{t}, \sigma_0^2|y) = \int_0^\infty \mathcal{L}(\bar{t}, \sigma_0^2, \delta|y) d\delta \quad (2)$$

$$\propto \left[ \frac{\sum_{i=\bar{t}+1}^N y_i^2}{2\sigma_0^2} \right]^{-\frac{(N-\bar{t}-6)}{2}} \Gamma \left( \frac{N-\bar{t}-2}{2} \right) \exp \left[ -\frac{\sum_{i=1}^{\bar{t}} y_i^2}{2\sigma_0^2} \right] \quad (3)$$

If the power of the first section (i.e., the power of noise, if we assume that our data starts with a noise only section) is known, the above equation can be used directly to obtain the posterior distribution for  $\bar{t}$ . If  $\sigma_0^2$  is unknown, we must choose a prior for it. We will not assume any particular knowledge about the power value; to keep the model invariant with relation to reparametrizations of the variance, we adopt the Jeffreys' prior [Jaynes (1968)][Jeffreys (1946)]  $\pi(\sigma_0) = 1/\sigma_0$ , and again integrate the above equation analytically to arrive at

$$\mathcal{L}(\bar{t}|y) = \int_0^\infty \mathcal{L}(\bar{t}, \sigma_0^2|y) \pi(\sigma_0) d\sigma_0 \quad (4)$$

$$\propto \left( \sum_{i=\bar{t}+1}^N y_i^2 \right)^{-\frac{(N-\bar{t}-6)}{2}} \Gamma \left( \frac{N-\bar{t}-2}{2} \right) \left( \sum_{i=1}^{\bar{t}} y_i^2 \right)^{-\frac{(\bar{t}+6)}{2}} \Gamma \left( \frac{\bar{t}+6}{2} \right) \quad (5)$$

From this point, it suffices to pick a prior  $\pi_t(t)$  for  $\bar{t}$ , multiply it by the above equation, and obtain (the kernel of) the posterior distribution for  $\bar{t}$ :

$$P(\bar{t}|y) \propto \pi(\bar{t}) \cdot \left( \sum_{i=1}^{\bar{t}} y_i^2 \right)^{-\frac{(\bar{t}+6)}{2}} \left( \sum_{i=\bar{t}+1}^N y_i^2 \right)^{-\frac{(N-\bar{t}-6)}{2}} \times \quad (6)$$

$$\Gamma \left( \frac{\bar{t}+6}{2} \right) \Gamma \left( \frac{N-\bar{t}-2}{2} \right) \quad (7)$$

This gives us a discrete distribution with support over  $1 < \bar{t} < N-1$ ; this means that it is in principle possible to calculate exactly the normalization constant that would make 6 a proper probability distribution. If we need to estimate  $\bar{t}$ , on the other hand, we can optimize equation 6 by inspection to find the MAP (*Maximum a Posteriori*) estimate.

In the next figures we present the distribution in 6 calculated over a simulated (Gaussian) signal of size  $N = 3000$ , with  $\delta \in \{1.1, 1.5, 2\}$ ,  $\bar{t} \in \{N/3, N/2, 2N/3\}$  and  $\sigma_0 = 1$ , and assuming a uniform prior over  $[2, N-2]$  for  $\bar{t}$ .

We notice in these figures a few important features of the above distribution; first, it peaks precisely around  $\bar{t}$  for higher values of  $\delta$ , as would be expected. Second, when it shows higher peaks far from the true value of  $\bar{t}$ , they are usually located near the extremes of the interval. This can be attributed to the high variation of variance estimatives in small samples, and could be easily eliminated by the use of an informative prior on  $\bar{t}$  (for instance, by assigning zero probability to values of  $t$  to close to 0 or  $N$ ).

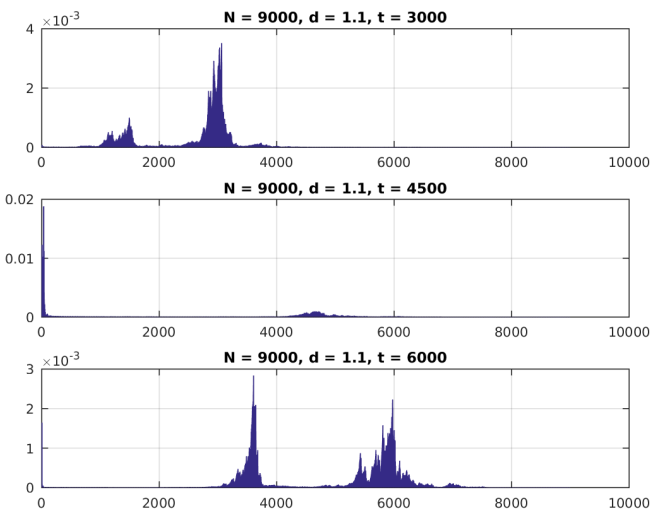


Figure 1: Posterior distribution for  $\bar{t}$ ,  $\delta = 1.1$

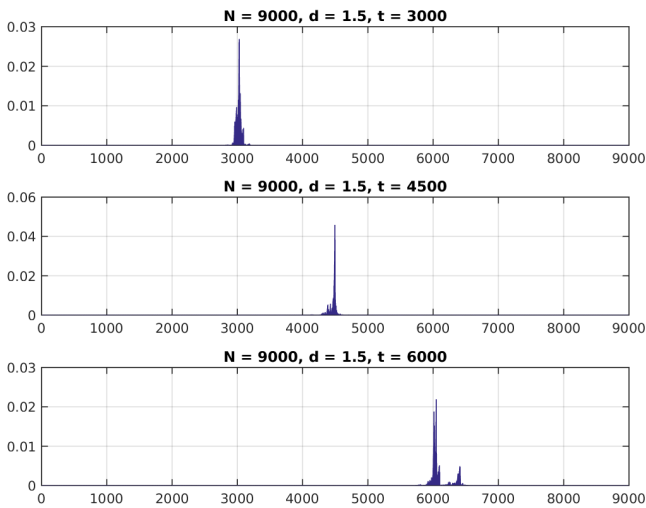
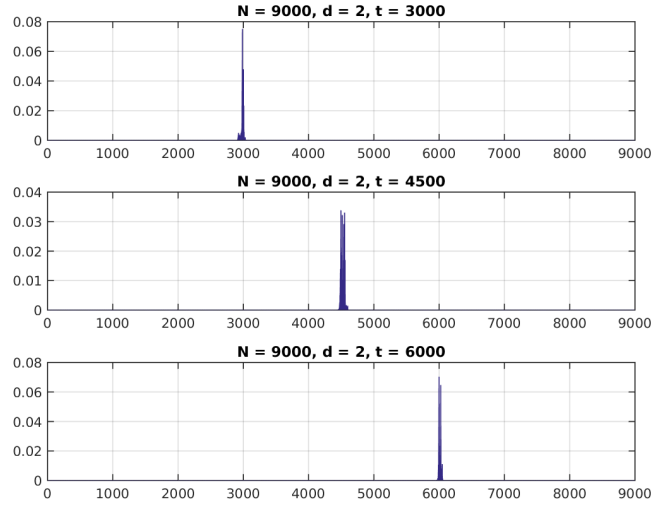


Figure 2: Posterior distribution for  $\bar{t}$ ,  $\delta = 1.5$

Figure 3: Posterior distribution for  $\bar{t}$ ,  $\delta = 2$ 

The model for the segmentation, as defined above, works well when the signal has one cut point. In most signals, however, and certainly on the samples from the OceanPod, there will be more than one segmentation point.

It would be straightforward to generalize the above model to these situations, obtaining a posterior for  $(\bar{t}_1, \bar{t}_2, \dots, \bar{t}_k)$ . However, the complexity of the discrete optimization problem involved with the MAP estimation of the cut points would grow exponentially. Also, it would raise the need to estimate  $k$ , the number of cutting points (or, equivalently, the number of segments in the signal), which we would like to avoid since we do not know this number in advance, and estimating it would be demanding.

Instead, we observe that the MAP estimate calculated from the above posterior will tend to divide the signal in regions with maximally different powers. So, whenever there is more than one change of power along the signal sample, it would still tend to estimate the cutting point at the beginning or end of one segment. To illustrate our point, we simulate a signal  $y \in \mathbb{R}^{10000}$  with two cutting points, in two different situations: first, we change the signal power from  $\sigma_0 = 1$  to  $\sigma_1 = 2$  at  $t = 2000$ , and then back to  $\sigma_0$  at  $t = 5000$ ; in the second figure, we change the power at  $t = 6000$  and then back to the original power at  $t = 8000$ . The simulated signal, along with the cutting points estimated by maximizing the posterior distribution, are shown in figure 4 below.

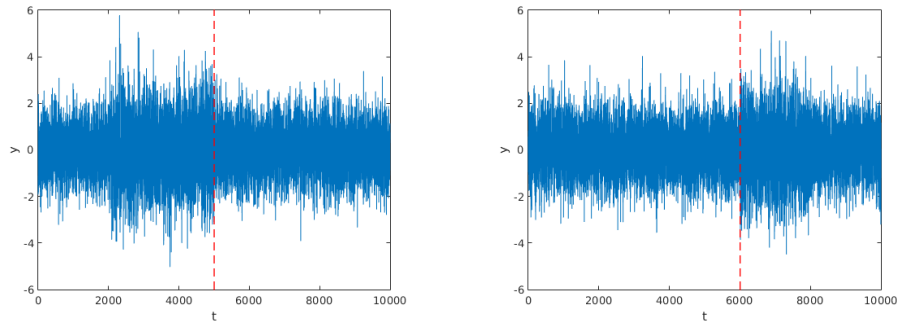


Figure 4: Segmentation point estimated for signal with two power changes; see text for details

This observation suggests a recursive approach for automatic signal segmentation: we first estimate one cutting point, and divide the original signal  $y$  into two regions,  $y_1$  and  $y_2$ . Then we apply again the same estimation to the new signals  $y_1$  and  $y_2$ , and so on. We repeat this estimation until some stopping criterion is met. This strategy gives rise to the sequential segmentation algorithm, which we define next.

### 3 The sequential segmentation algorithm

We therefore define the sequential segmentation algorithm in the following manner:

**(Sequential segmentation algorithm) Define the function  $\text{seg}(y \in \mathbb{R}^N, n_{\min})$  as:**

1. **If**  $N < n_{\min}$ , stop, returning the empty vector  $t = []$ ;
2. **Else**
  - (a) Obtain the MAP estimate  $\bar{t}$ ;
  - (b) Define  $y^1 = y_{1, \dots, \bar{t}}$  and  $y^2 = y_{\bar{t}+1, \dots, N}$ ;
  - (c) (Stopping criterion) **If**  $\text{var}(y^1) = \text{var}(y^2)$ , stop, returning the empty vector  $t = []$ ;
  - (d) **Else** return the concatenated vector  $[ \text{seg}(y^1, n_{\min}) \quad \bar{t} \quad \bar{t} + \text{seg}(y^2, n_{\min}) ]$ .

Please note that the  $\text{seg}$  appearing in the last line refers to the function itself; our algorithm, then, is of a recursive nature.

This recursive algorithm will output an ordered vector  $\tau \in [1, \dots, N-1]^k$  with the starting points of  $k$  signal segments, where the segments have been found to exhibit different powers. The condition  $N \geq n_{\min}$  guarantees that the algorithm stops and is well defined; the main question is how to decide if  $\text{var}(y^1) = \text{var}(y^2)$ , i.e., to define the stopping criterion.

As it is clear from the definition, the matter is one of testing the hypothesis of equality of variances, given two samples with mean 0. Or, using our parametrization, to test the hypothesis  $H_0 : \delta = 1$ .

Our model is defined in the parametric space  $\Theta = \mathbb{R}_+ \times \mathbb{R}$ , where  $\theta = (\sigma_0^2, \delta)$ ; under  $H_0$ , we have  $\Theta_0 = \mathbb{R}_+$ . Our hypothesis thus lies in a subspace of  $\Theta$ , i.e., it is a *sharp* hypothesis.

The traditional statistical literature proposes a few different ways to test equality of variances, the most known being possibly the  $F$  test, and the likelihood ratio test. However, it is well reported that the traditional, frequentist tests, have a few drawbacks, particularly some problems related to the definition of the alternative hypothesis [Good (1992)], or with the choice of an appropriate significance level for the decision function [Perez (2014)] [Pereira (1993)]. The classical bayesian alternative would then be a Bayes factor test, which in turn would meet some difficulties with the fact that our null hypothesis defines a lower dimensional parametric space [Pereira (1999)].

A full bayesian procedure is available, however, that is well suited to the test of sharp hypothesis such as  $H_0 : \delta = 1$ ; this is the now well-known *full bayesian significance test* (FBST) of Pereira and Stern [Pereira (1999)]. This procedure works in the full parametric space, defining an evidence measure based on the *surprise set* of points having higher posterior density than the supremum posterior under  $H_0$ . The test avoids altogether the imposition of positive probabilities over null measure sets such as  $\Theta_0 : \{(\delta, \sigma_0) \in \mathbb{R}^2 : \delta = 1\}$ , and has been tested many times with very good results (for a few examples see [Chakrabarty (2017)] [Hubert (2009)] [Lauretto (2009)] [Stern (2002)]).

Of course, even with the application of the FBST, there remains the problem of defining a decision function over the evidence value for  $H_0$ ,  $ev(H_0, y)$ ; as we will see, however, this decision function will become trivial when we calibrate our testing procedure with the use of appropriate priors.

Recalling the probabilistic model of our signal, given  $y$  and  $\bar{t}$ , and defining  $y^1$  and  $y^2$  as in the above algorithm, we write the full posterior

$$P(d, s | y^1, y^2) \propto \pi_\delta(d) \pi_\sigma(s) (2\pi s^2)^{-\frac{n_1+n_2}{2}} d^{-\frac{n_2}{2}} \exp \left[ -\frac{\sum_{i=1}^{n_1} y_{1,i}^2}{2s^2} - \frac{\sum_{i=1}^{n_2} y_{2,i}^2}{2ds^2} \right] \quad (8)$$

where  $n_1$  and  $n_2$  are the corresponding dimensions of  $y^1$  and  $y^2$ ,  $\pi_\delta$  is the prior for  $\delta$  and  $\pi_\sigma$  the prior for  $\sigma_0$ .

To incorporate the lack of knowledge about the base signal variance  $\sigma_0$ , and at the same time to guarantee invariance, we adopt again a Jeffreys' prior  $\pi_\sigma(s) = 1/s$ .

For  $\delta$ , however, we would like to choose an informative prior, to model our knowledge about the signal characteristics. Including an informative prior for  $\delta$  will also provide the algorithm with a calibration parameter, that will allow the method to be adapted to different circumstances (different lengths for the signal sample, different SNR characteristics, etc.).

To define this prior, we consider what we do know about  $\delta$ . We reason in the following terms: suppose we are to pick at random two contiguous sections of our signal, with sizes  $n_1$  and  $n_2$ ; suppose that these sections have  $s_1$  and  $s_2$  as their respective powers, as estimated from the data. We then define  $\delta = \frac{s_2}{s_1}$ .

Now, unless we happen to pick by chance two segments that include a true change of power (in our terms, the beginning or end of an event), we expect  $\delta$  to be very close to 1. This belief would

be as strong as our perceived probability of finding an event at random in our signal. As we have mentioned before, the ocean's subaquatic soundscape is a rather minimalist environment, with long periods of very low or no activity. So we believe that, in our thought experiment above, we are very likely to pick sections with  $\delta$  very close to 1.

However, if we happen to pick a segment with an event, then we can expect to find  $\delta \gg 1$ , since most events in our signal have large SNR values (for instance, the already mentioned boat engines, running at a small distance from the hydrophone). It is then reasonable to believe that, even though  $\delta$  is likely close to 1, it can sometimes differ significantly and assume high values, close to  $\delta = 2$  or even higher.

All of these considerations lead us to pick a prior distribution on  $\delta$  that is: (a) centered around 1; (b) high-peaked around this same value; but (c) with larger tails than the Gaussian. Further on, to keep matters as simple as possible, we would like our prior to have few parameters (since we will use these parameters for the calibration of our algorithm). Combining all of these objectives, we propose a Laplace prior for  $\delta$ :

$$\pi_\delta(d) = \frac{1}{\beta} e^{-\frac{|d-1|}{\beta}} \quad (9)$$

In practical terms, this prior will tend to favor  $H_0 : \delta = 1$ , inversely with the value of  $\beta$ . This value can be used as a calibration parameter for the detection algorithm. Also, picking a sufficiently low value for  $\beta$  will guarantee a minimum prior probability for the meaningless situation  $\delta \leq 0$ .

Again, we must stress that in working with acoustic signals with a sampling rate as high as 11kHz, we will be dealing with large sample sizes; typically we will define a smallest detectable event as a segment with a duration of around 1s, which means that we will be comparing the variances of samples with sizes  $N = 11025$  each. On the other extreme, the algorithm will start with a signal of duration in the order of minutes (the files obtained from the hydrophone are configured as 15 min long for default), which translates to sample sizes in the order of millions. Our numerical tests indicate that the value of  $\beta$  must be set correspondingly; our best results used  $\beta \propto 10^{-5}$ , as we will see in the results section.

With the model completely specified, the evidence value for  $H_0$  is calculated as

$$ev(H_0, y) = \int_{T(y)} P(\sigma_0, \delta | y) d\sigma_0 d\delta \quad (10)$$

where

$$T(y) = \{(\sigma_0, \delta) \in \Theta : P(\sigma_0, \delta | y) > \sup_{\Theta_0} P(\sigma_0, \delta | y)\} \quad (11)$$

It is noteworthy that, when defining the posterior for the cutting point  $\bar{t}$ , we chose priors for all the other parameters in order to analitically integrate them out. The intention behind this choice was to keep this step of the algorithm as simple as possible, since MAP estimation in this case is a discrete optimization problem which we solve by brute force. Now, however, when calculating the evidence for the hypothesis  $\delta = 1$ , we want to work on the full parametric space, without explicitly marginalizing any parameter. This is the standard procedure when working with the FBST [Pereira (1999)].

To calculate the above integral, then, we adopt a numerical procedure: we apply a block Metropolis-Hastings algorithm, with a sample size of 10000 points after a burnin of another 10000 points, and using exponential distributions as candidates for both  $\sigma$  and  $\delta$ .

The stopping criterion for the algorithm is finally defined by setting a minimal evidence for  $H_0$ ,  $\alpha_{min}$ ; the algorithm will keep segmentating the signal as long as the evidence for  $H_0 : \delta = 1$  is lower than this threshold value:

**(Stopping criterion) Given  $y^1$ ,  $y^2$  and  $\alpha_{min}$ :**

1. Obtain  $s_0 = \sup_{\Theta_0} P(\sigma_0, \delta | y)$ ;
2. Obtain the evidence  $ev(H_0, y) = \int_{T(y)} P(\sigma_0, \delta | y) d\sigma_0 d\delta$ ;
3. **If**  $ev(H_0, y) < \alpha_{min}$ , return 1 ( $var(y^1) \neq var(y^2)$ ); **else** return 0.

## 4 Results: simulated signal

To verify the performance of our algorithm we first apply it to simulated data. We simulate  $y \in \mathbb{R}^{20000}$ , where  $y_i \sim \mathcal{N}(0, \sigma_i^2)$ , and we define 5 segments in the signal, given by the following definition for the variance  $\sigma_i^2$ :



$$\sigma_i^2 = \begin{cases} 1 & \text{if } i \leq 5000 \\ 1.1 & \text{if } 5000 < i \leq 10000 \\ 1 & \text{if } 10000 < i \leq 12000 \\ 1.5 & \text{if } 12000 < i \leq 15000 \\ 1 & \text{if } i > 15000 \end{cases}$$

As a baseline method to compare our results, we use the peak detection algorithm of Palshikar [Palshikar (2009)]. This algorithm defines peaks in the signal by using local and global properties. The local properties are based in functions calculated over windows of width  $k$ , centered around each coordinate of the signal. Each function reflects a different characterization of what actually constitutes a peak. The global properties arise when each peak is compared to the average amplitude of all peaks, and a thresholding is applied based on their standard deviation.

Palshikar's algorithm takes then 2 parameters:  $h$ , the number of standard deviations to use as threshold, and  $k$ , the length of the window. Also the algorithm can use many different functions to define a peak locally; we run Palshikar's algorithm using his three  $S$  functions. The first function,  $S_1$  calculates for each point  $y_i$  of the signal the maximum (signed) difference between  $y_i$  and its left neighbours (points with indexes in the range  $j : j < i \& |i - j| < k$ ), the maximum (signed) difference between  $y_i$  and its right neighbours ( $\{y_j : j > i \& |i - j| < k\}$ ), and takes the average between these two maxima. The second function,  $S_2$ , takes the mean (signed) difference between  $y_1$  and its left neighbours, the mean (signed) difference between  $y_i$  and its right neighbours, and takes the average between the two means. The third function,  $S_3$ , takes the signed difference between  $y_i$  and the average of its left neighbours, the signed difference between  $y_i$  and the average of its right neighbours, and takes the mean <sup>3</sup>.

In table 1 we compare the results of our method with Palshikar's algorithm, using each of the three  $S$  functions and 8 combinations of values for  $h$  and  $k$ . For the sequential segmentation algorithm, we set  $\beta \in \{1, 0.01\}$  and  $\alpha \in \{0.01, 0.1\}$ ; lower values of  $\beta$  imply higher prior weight to the hypothesis  $\delta = 1$ , while lower values of  $\alpha$  imply earlier stop for the algorithm (i.e., we require higher evidence against  $\delta = 1$  to keep segmentating the signal). In the table, we labeled our algorithm as *SeqSeg*.

Algorithm	Parameters	Elapsed time (s)	# of segments	First cutting point	Last cutting point
SeqSeg	$\beta = 1, \alpha = 0.01$	9.8912	5	4990	15001
SeqSeg	$\beta = 0.01, \alpha = 0.01$	11.8567	5	4990	15001
SeqSeg	$\beta = 1, \alpha = 0.1$	12.7605	5	4990	15001
SeqSeg	$\beta = 0.01, \alpha = 0.1$	11.5746	5	4990	15001
Palshikar $S_1$	$h = 3, k = 100$	0.3116	31	4778	14852
Palshikar $S_2$	$h = 3, k = 100$	0.3303	13	5039	14470
Palshikar $S_3$	$h = 3, k = 100$	0.3443	9	1608	14249
Palshikar $S_1$	$h = 3, k = 500$	0.4264	5	5039	14179
Palshikar $S_2$	$h = 3, k = 500$	1.4768	55	1608	19892
Palshikar $S_3$	$h = 3, k = 500$	1.3090	25	964	19892
Palshikar $S_1$	$h = 3, k = 1000$	1.0846	16	964	19892
Palshikar $S_2$	$h = 3, k = 1000$	1.2406	10	964	19892
Palshikar $S_3$	$h = 3, k = 1000$	1.4050	55	1608	19892
Palshikar $S_1$	$h = 3, k = 2000$	0.9451	25	964	19892
Palshikar $S_2$	$h = 3, k = 2000$	0.9889	16	964	19892
Palshikar $S_3$	$h = 3, k = 2000$	1.1212	10	964	19892
Palshikar $S_1$	$h = 4, k = 100$	0.1718	5	13171	14311
Palshikar $S_2$	$h = 4, k = 100$	0.2303	3	13171	14311
Palshikar $S_3$	$h = 4, k = 100$	0.3023	4	12606	14727
Palshikar $S_1$	$h = 4, k = 500$	0.4439	3	12606	14727
Palshikar $S_2$	$h = 4, k = 500$	0.8924	16	1608	14923
Palshikar $S_3$	$h = 4, k = 500$	0.9922	10	1608	14923
Palshikar $S_1$	$h = 4, k = 1000$	1.0793	9	1608	14727
Palshikar $S_2$	$h = 4, k = 1000$	1.2486	6	1608	14311
Palshikar $S_3$	$h = 4, k = 1000$	0.8439	16	1608	14923
Palshikar $S_1$	$h = 4, k = 2000$	0.9167	10	1608	14923
Palshikar $S_2$	$h = 4, k = 2000$	1.0030	9	1608	14727
Palshikar $S_3$	$h = 4, k = 2000$	1.1367	6	1608	14311

Table 1: Test results; see text for details

<sup>3</sup>For details about the algorithm and a review on peak detection methods, we refer the interested reader to Palshikar's paper [Palshikar (2009)].



The experimental results show that our algorithm is much more robust to changes in the parameters than the peak detection algorithm of Palshikar. Every combination we used resulted in the same output, correctly segmenting the signal in 5 segments, the first starting around  $i = 5000$ , and the last around  $i = 15000$ . The peak detection algorithm is much more sensitive to the parameters choice. The best result for the peak detection algorithm was using  $S_1$ , with  $h = 3$  and  $k = 500$ . Also, it is clear that Palshikar's algorithm performed much better when the segment's SNR was higher (i.e., it worked better identifying the last cutpoint, rather than the first); even though our algorithm also will perform better with higher SNR, the value of  $\delta = 1.5$  is sufficient for the algorithm to capture correctly the first segment.

On the other hand, our algorithm is much slower than Palshikar's. This is due to the fact that our method involves one brute-force, integer optimization step, and one MCMC step. Nevertheless, this paper was written using a pilot version of our algorithm, written in MATLAB with little concern for computational performance. In particular, no parallelization strategy was adopted, and both steps are strongly parallelizable. With this issue in mind, we are working on a new version of the algorithm, this time written in Python and using Google's TensorFlow framework<sup>4</sup>, and we hope that our final version will sensibly improve the computational performance of our algorithm.

There is, however, one quick way to improve the performance of the SeqSeg method, in particular of the brute force optimization we apply in the calculation of the MAP estimate. We can set a *time resolution* for the algorithm, and instead of calculating the posterior for each and every  $i = 1, \dots, N$ , we can evaluate it at equally spaced points  $i = r, 2r, \dots, k \cdot r$ . The resolution  $r$  can be set to any value which is less than the length of a typical event, and the number of function evaluations in the optimization step decreases linearly with  $r$ .

## 5 Results: OceanPod samples

Our main goal when developing the segmentation algorithm was to annotate the samples from the OceanPod, in search of segments that are likely to capture any significant event. These segments can then be analyzed on their own, to characterize the events and build an annotated database to be fed to a classification algorithm.

It is important to once again stress that we do not have previous knowledge about the events taking place in the OceanPod signal; this means that it is difficult to define a precise performance measure to any segmentation or annotation algorithm applied to these data. What we propose to do is to select a few samples, with distinctive characteristics, and manually count the number of segments we expect in each sample (by inspecting the spectrogram, where the events are more easily spotted). Then we can compare the results of the segmentation algorithm to this number.

For that we select 3 samples from the OceanPod signal, each of them with a total length of 15 minutes (the default filesize for the OceanPod). The first is a recording from 2015-01-30, saturday, from 02h02m56s to 02h17m56s. During this period, there is no perceivable activity beyond background noise (concentrated around 5kHz). When applying any segmentation method to this sample we would then expect no segments to be found. The second is a recording from 2015-02-02, monday, from 07h50m49s to 08h04m49s. In this sample we found a long duration event, starting at time 0 and lasting approximately 10 minutes. By listening to the sample, we identify the sound of a large sized vessel, passing by at a long distance and with low speed. The segmentation algorithm applied to this sample should detect one or two change points for the signal's power, ideally forming a segment starting at  $i = 0$  and ending around  $i = 6.615.000$ , i.e., 10 minutes into the signal (recall that the sampling rate is  $f_s = 11.025$  Hz).

The third sample is from 2015-02-08, sunday, from 11h26m39s to 11h41m39s. During this 15 minutes there are many events taking place; listening to this sample we identify the engine of smaller vessels, being turned on and off and near the hydrophone spot. In this sample, we expect the segmentation algorithm to detect many events. By visually inspecting this sample, we identify 32 distinct segments.

We opted to show below the spectrograms obtained for each of the three samples, even though the segmentation algorithm does not use any feature in the frequency domain. The reason for using the spectrograms, instead of the raw waveforms, is that we found much easier to spot the events, specially in the third sample, when plotting on the frequency domain. An event, or segment, in these pictures, is a "heater" (red instead of blue) region on the spectrogram. We are interested in obtaining the time (horizontal) coordinates of each of these events, regardless of their spectrum (vertical coordinate).

---

<sup>4</sup>See <http://tensorflow.org>

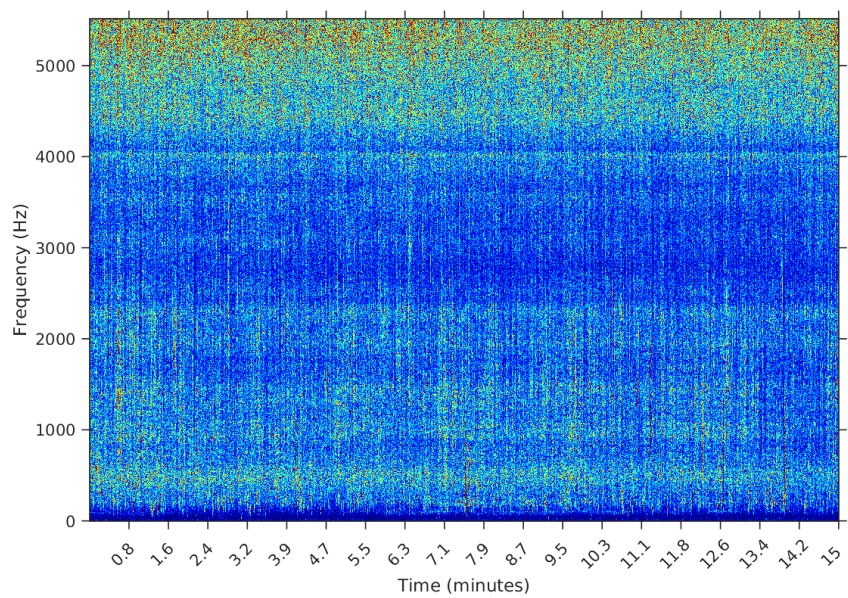


Figure 5: Spectrogram of first sample: noise only

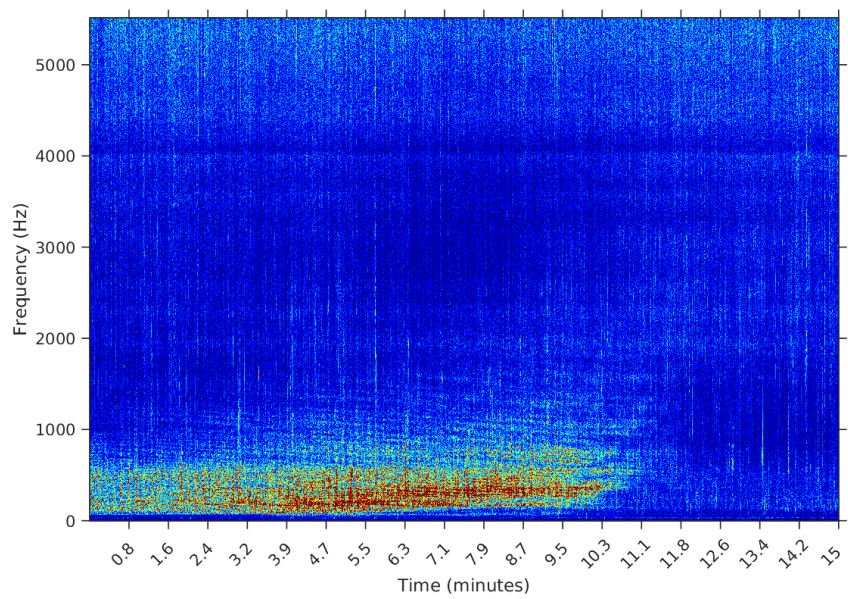


Figure 6: Spectrogram of second sample: one long duration event

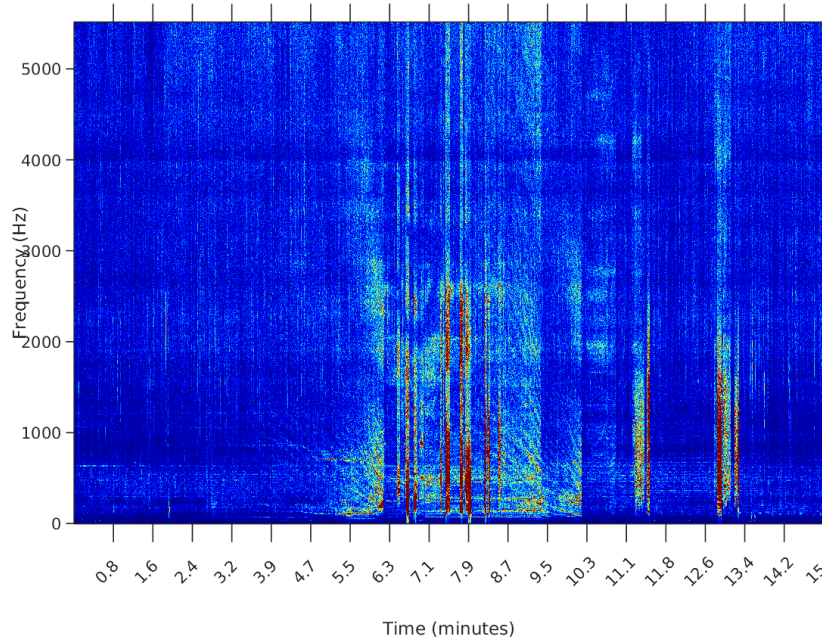


Figure 7: Spectrogram of third sample: many short events

We apply our sequential segmentation algorithm to each of this samples; we take  $\beta \in \{3 \times 10^{-5}, 1 \times 10^{-5}\}$  and fix  $\alpha = 0.01$ . Our experiments show that higher values for  $\beta$  result in an excess of segments. For comparison we also apply Palshikar's algorithm to the same samples, using the  $S_1$  function, with  $k = 11.025$  fixed and  $h \in \{3, 5\}$ .

Because both our algorithm and Palshikar's involve calculation of some function (the posterior distribution for  $\bar{t}$ , in our case, and the function  $S_i$  for Palshikar's) for each coordinate  $y_i$  of the signal vector, when analysing samples as long as 15 minutes, with a sampling frequency of 11.025 Hz, the performance of both algorithms became unpractical (more than 10 minutes to process each sample). To deal with this situation, we adopt the strategy of fixing a time resolution  $r = 11.025$  to our algorithm, and a time resolution of  $r = 10$  to Palshikar's. This means that we will calculate the posterior only for  $y_{j \cdot 11.025}, j = 1, \dots, \text{floor}(N/11.025)$ , and the  $S$  function for  $y_{j \cdot 10}, j = 1, \dots, \text{floor}(N/10)$ .

We have experimented with using  $r = 11.025$  for both methods. This accelerated the peak detection algorithm to running times of little more than 1 second. However, the nature of the  $S$  function (being based on the maxima or averages of blocks with size  $k$ ), caused Palshikar's algorithm to miss many segments endpoints. Our experiments showed that picking  $r = 10$  was a good compromise between performance and sensibility.

Algorithm	Sample	Elapsed time (s)	Segments	First segment (min)	Last segment (min)
SeqSeg, $\beta = 1e-05$	2015-02-08	245.41	28	1.80	13.32
SeqSeg, $\beta = 3e-05$	2015-02-08	174.13	13	1.80	13.32
Palshikar $h = 3$	2015-02-08	113.33	56	0.51	13.30
Palshikar $h = 5$	2015-02-08	112.23	29	6.65	13.28
SeqSeg, $\beta = 1e-05$	2015-01-30	149.61	3	2.02	10.63
SeqSeg, $\beta = 3e-05$	2015-01-30	44.83	0	-	-
Palshikar $h = 3$	2015-01-30	88.27	130	0.00	14.91
Palshikar $h = 5$	2015-01-30	87.30	27	0.30	14.21
SeqSeg, $\beta = 1e-05$	2015-02-02	101.45	7	1.77	10.90
SeqSeg, $\beta = 3e-05$	2015-02-02	94.24	3	3.75	10.32
Palshikar $h = 3$	2015-02-02	89.07	114	0.00	14.83
Palshikar $h = 5$	2015-02-02	91.15	22	0.69	14.20

Table 2: Results in real signal samples; see text for details

Table 2 summarizes the results of both algorithms applied to each of the three samples. We present the elapsed time, in seconds, the final number of segments, the start time in minutes of the



first and last segments.

The sample from 2015-01-30 is the sample containing only noise. We then expect the algorithms to output 0 segments. This was the case only for the SeqSeg algorithm when  $\beta = 3e-05$ . Palshikar's algorithm returned many false positives for this sample, regardless of the parameter value.

The sample from 2015-02-02 is the sample containing a long event, starting at the very beginning of the file (0 minutes) and ending around 10 minutes. Again, the SeqSeg algorithm found a much lower number of segments and correctly identified the end of the main event at around 10 minutes.

Finally, the sample from 2015-02-08 contains 32 segments evident to the eye. The SeqSeg algorithm came near to this number when  $\beta = 1e-05$ . It is noteworthy that, regardless of the value of  $\beta$ , the first and last segments found by SeqSeg had precisely the same start points. Palshikar's algorithm came near to the true value of segments when  $h = 5$ , and was less robust in terms of the starting times of the first and last segment.

To help the comparison between the segments obtained by the sequential segmentation algorithm and Palshikar's algorithm in the sample from 2015-02-08, we plot in figures 8 through 11 below the spectrogram of this sample with the segments found by each algorithm represented by dashed white lines.

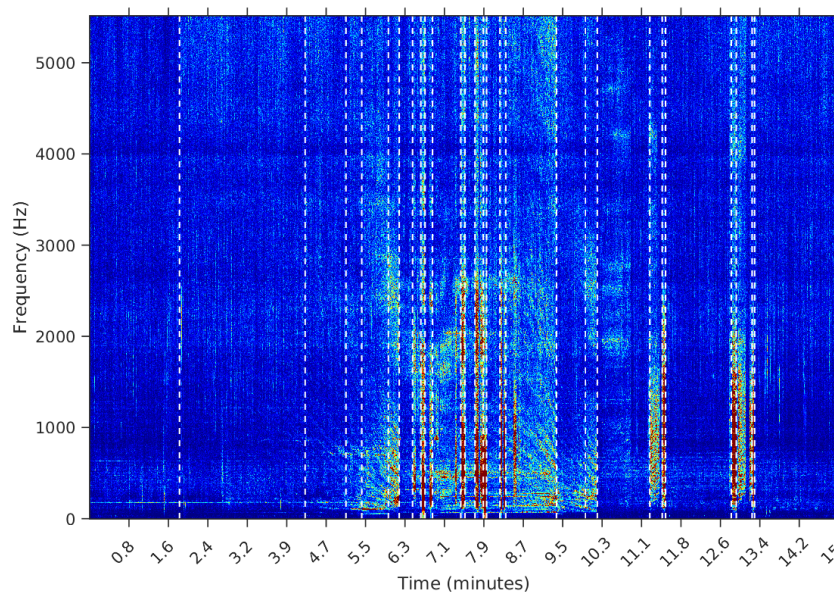


Figure 8: Segmentation using SeqSeg algorithm with  $\beta = 3e^{-5}$

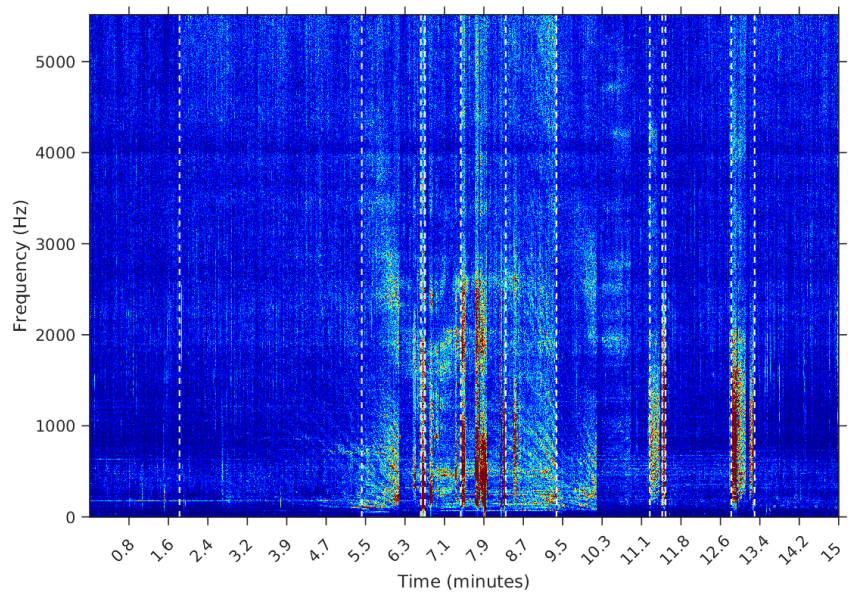


Figure 9: Segmentation using SeqSeg algorithm with  $\beta = 1e^{-5}$

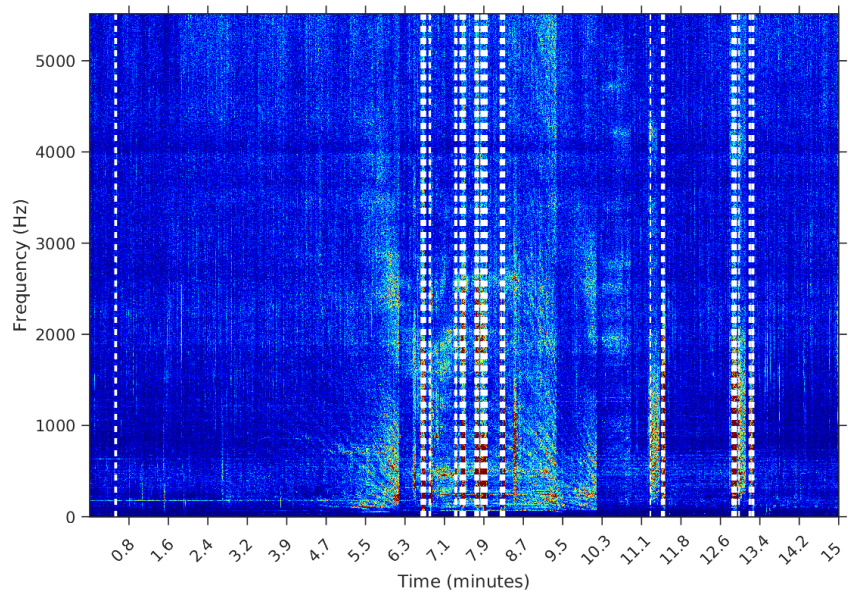


Figure 10: Segmentation using Palshikar's algorithm with  $h = 3$

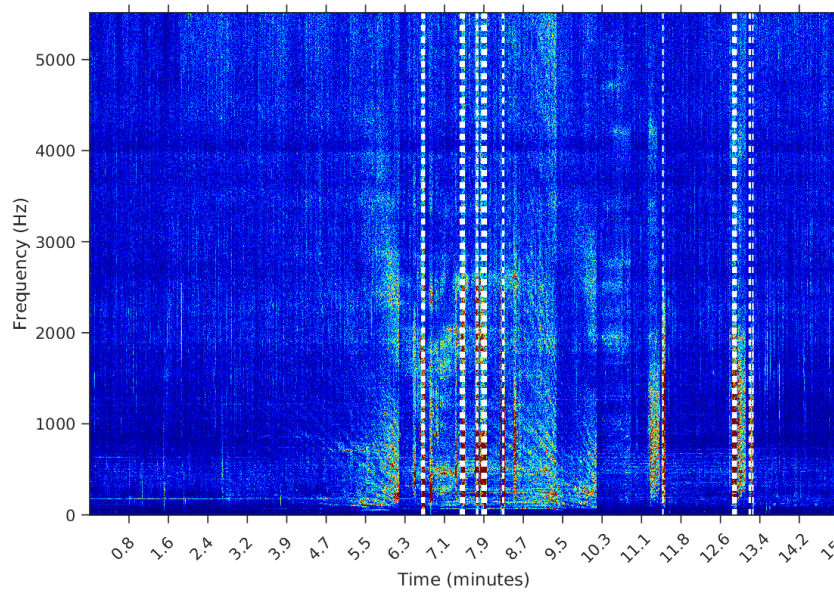


Figure 11: Segmentation using SeqSeg algorithm with  $h = 5$

It is clear that the segments defined by the SeqSeg algorithm are much closer to what we can visually identify from the spectrogram. The peak detection algorithm tends to oversegment the eventful sections, and ignore some points where there is a clear change in the signal's power.

Finally, when applying both algorithms to real data, the computational performance of the two methods were not very different. We recall, however, that we imposed a resolution limitation to the SeqSeg algorithm. Nevertheless, even with this limitation, its results are clearly superior to the traditional peak detection strategy.

## 6 Conclusions

Our goal in this paper was to define a signal segmentation algorithm that could be as general as possible. We wanted it to be general specially because we do not know in advance exactly what kinds of patterns (events) there might be in the data. In this sense, this algorithm can be described as an unsupervised learning method, and could be applied to the analysis of any signal or time series where the assumptions hold.

When compared to a standard peak detection algorithm, our method has shown to be much more robust and also more precise in detecting the number of events, and also their boundaries, both on simulated and real data. In practice, there is only one parameter to be calibrated (the prior's  $\beta$ ). The value of this parameter can be set by a technician with no mathematical training, by choosing an adequate sample to use for tuning the algorithm's behavior.

Also, our method was built based on a simple assumption (that a segment involves a change in the signal's energy), and based entirely on methods of Bayesian inference. There is no adhoceries involved, the closest to an *ad hoc* procedure being the choice of the prior distributions. However, we have argued for the choice of each of the priors, and we believe that all of them honestly reflect and incorporate the prior knowledge that we have about the signal and the segments.

Most (if not all) automatic segmentation algorithms currently known to the literature, on the contrary, rely on more or less arbitrary definitions and parameters (such as the form of the  $S$  functions or the parameter  $h$ ). We believe that, for this reason, the calibration of such algorithms is much more difficult than in our case, and our tests show that this is indeed the case.

On the other hand, the computational performance of our method is far from ideal. We acknowledge that and are currently working on a new and parallelized version of the algorithm, that we hope will perform significantly better. Nevertheless, since our algorithm is aimed at being used as a preprocessing tool, the current performance is tolerable, in the face of the quality of our results.



This work was partly supported by FAPESP grants 16/02175-0 and CNPq grant 308405/2013-7. The authors are grateful for the support received from IME-USP, the Institute of Mathematics and Statistics of the University of São Paulo; FAPESP - the State of São Paulo Research Foundation (grants CEPID-CeMEAI 2013/07375-0 and CEPID-Shell-RCGI 2014/50279-4); and CNPq - the Brazilian National Counsel of Technological and Scientific Development (grant PQ 301206/2011-2). The authors acknowledge the Laje de Santos Marine State Park Team for supporting this project. The authors would like to acknowledge professors Carlos Pereira and Victor Fossaluzza for very helpful insights in this research project. In particular, they were the ones first suggesting that we should follow a general approach before trying to model specific events. Finally, the author would like to thank three anonymous referees for very helpful comments on the first draft of this paper.

## References

- [Bretthorst (1988)] Bretthorst, L. *Bayesian Spectrum Analysis and Parameter Estimation*, Springer-Verlag: New York, USA, 1988; ISBN 978-0-387-96871-1
- [Jaynes (1987)] Jaynes, E. Bayesian Spectrum and Chirp Analysis, In *Maximum-Entropy and Bayesian Spectral Analysis and Estimation Problems*, C.R. Smith, G.J. Erickson, Eds.; D. Reidel Publishing Co., Dordrecht, Holland, 1987; ISBN 978-94-009-3961-5
- [Ruanaidh (1996)] Ruanaidh, J.J.K., Fitzgerald, W.J. *Numerical Bayesian Methods Applied to Signal Processing*, Springer, New York, USA, 1996; ISBN 978-0387946290
- [Bretthorst (1990A)] Bretthorst, L. Bayesian Analysis. I. Parameter Estimation Using Quadrature NMR Models, *Journal of Magnetic Resonance* **1990**, *88*, 533-551
- [Bretthorst (1990B)] Bretthorst, L. Bayesian Analysis. II. Signal Detection and Model Selection, *Journal of Magnetic Resonance* **1990**, *88*, 552-570
- [Bretthorst (1990C)] Bretthorst, L. Bayesian Analysis. III. Applications to NMR Signal Detection, Model Selection and Parameter Estimation, *Journal of Magnetic Resonance* **1990**, *88*, 571-595
- [Etter (2013)] Etter, P.C. *Underwater Acoustic Modeling and Simulation*, CRC Press, Boca Raton, USA, 2013; ISBN 978-1-4665-6494-7
- [Hubert (2017)] Hubert, P., Padovese, L.R., Stern, J.M. Full bayesian approach for signal detection with an application to boat detection on underwater soundscape data, to appear in *Maximum Entropy Methods in Science and Engineering*, Springer-Verlag, New York, USA
- [Makowsky (2014)] Makowsky, R., Hossa, R. Automatic Speech Signal Segmentation Based on the Innovation Adaptive Filter, *Int. J. Appl. Math. Comput. Sci* **2014**, *24* (2), 259-270
- [Ukil (2006)] Ukil, A., Zivanovic, R. Automatic Signal Segmentation based on Abrupt Change Detection for Power Systems Applications, *Power India Conference* **2006**
- [Schwartzman (2011)] Schwartzman, A., Gavrilov, Y., Adler, R.J. Multiple Testing of Local Maxima for Detection of Peaks in 1D, *The Annals of Statistics* **2011**, *39* (6), 3290-3319
- [Kuntamalla (2014)] Kuntamalla, S., Ram Gopal Reddy, L. An Efficient and Automatic Systolic Peak Detection Algorithm for Photoplethysmographic Signals, *International Journal of Computer Applications* **2014**, *97* (19)
- [Theodorou (2014)] Theodorou, T., Mporas, I., Fakotakis, N. An Overview of Automatic Audio Segmentation, *I.J. Information Technology and Computer Science* **2014**, *11*, 1-9
- [Jaynes (1982)] Jaynes, E.T. On the Rationale of Maximum-Entropy Methods, *Proceedings of the IEEE* **1982**, *70* (9) 939-952
- [Jaynes (1968)] Jaynes, E.T. Prior Probabilities, *IEEE Transactions On Systems Science and Cybernetics* **1968**, *4* (3) 227-241
- [Jeffreys (1946)] Jeffreys, H. An Invariant Form for the Prior Probability in Estimation Problems, *Proceedings of the Royal Society of London. Series A, Mathematical and Physical Sciences* **1946**, *186* (1007), 453-461
- [Good (1992)] Good, I.J. The Bayes/Non-bayes compromise: a Brief Review, *Journal of the American Statistical Association* **1992**, *87* (419) 597-606
- [Perez (2014)] Perez, M., Pericchi, L.R. Changing Statistical Significance with the Amount of Information: The Adaptive  $\alpha$  Significance Level, *Statistics & Probability Letters* **2014**, *85*, 20-24 DOI: 10.1016/j.spl.2013.10.018



- [Pereira (1993)] Pereira, C.A.B., Wechsler, S. On the Concept of P-value, *Revista Brasileira de Probabilidade e Estatística* **1993**, 7 159-177
- [Pereira (1999)] Pereira, C.A.B., Stern, J.M. Evidence and credibility: full Bayesian significance test for precise hypotheses, *Entropy* **1999**, 1 99-110
- [Chakrabarty (2017)] Chakrabarty, D. A New Bayesian Test to Test for the Intractability-Countering Hypothesis, *JASA* **2017**, 112 (518), 561-577
- [Hubert (2009)] Hubert, P., Lauretto, M., Stern, J.M. FBST for Generalized Poisson Distributions *AIP Conference Proceedings* **2009**, 1193 (1) 210-217 DOI: 10.1063/1.3275617
- [Lauretto (2009)] Lauretto, M.S., Nakano, F., Faria Jr., S.R., Pereira, C.A.B., Stern, J.M. A straightforward multiallelic significance test for the Hardy-Weinberg equilibrium law, *Genetics and Molecular Biology* **2009**, 32 (3) <http://dx.doi.org/10.1590/S1415-47572009000300028>
- [Stern (2002)] Stern, J.M., Zacks, S. Testing the independence of Poisson variates under the Holgate bivariate distribution: the power of a new evidence test, *Statistics & Probability Letters* **2002**, 60 (3), 313-320
- [Palshikar (2009)] Palshikar, G.K. Simple Algorithms for Peak Detection in Time Series, In *1st Int. Conf. Advanced Data Analysis, Business Analytics and Intelligence* **2009**