

Supplementary Table S1. Number of MLH1 foci per chromosome arm

Arm	Synaptic type	Number of MLH1 foci		Number of chromosomes examined	Number of animals
		Mean	S.D.		
Invariable chromosomes					
a	Met hom ^a	1.67	0.63	84	7
	CVIII ^b	1.90	0.61	30	2
b	Met hom	1.40	0.54	84	7
	CVIII	1.52	0.57	29	2
c	Met hom	1.46	0.63	85	7
	CVIII	1.45	0.57	29	2
d	Met hom	1.53	0.61	89	7
	CVIII	1.50	0.56	36	2
f	Met hom	1.01	0.40	84	7
	CVIII	1.00	0.46	30	2
j	Met hom	1.01	0.41	81	7
	CVIII	0.89	0.32	36	2
l	Met hom	0.94	0.33	81	7
	CVIII	0.92	0.37	36	2
t	Met hom	0.32	0.47	89	7
	CVIII	0.34	0.48	35	2
u	Met hom	0.59	0.5	89	7
	CVIII	0.66	0.48	35	2
Chromosomes involved in CVIII					
g	Met hom	1.18	0.54	57	6
	CIII ^c (g/o)	1.12	0.43	26	1
	CVIII	1.29	0.58	34	2
h	Met hom	0.99	0.46	85	7
	CVIII	1.13	0.42	32	2
i	Met hom	1.00	0.42	81	7
	CVIII	0.94	0.34	35	2
k	Met hom	0.88	0.40	83	7
	CVIII	1.03	0.39	34	2
m	Met hom	0.77	0.43	73	6
	CIII (m/p)	0.79	0.43	14	1
	CVIII	0.92	0.37	36	2
n	Met hom	0.90	0.31	89	7
	CVIII	0.94	0.23	36	2
o	Met hom	0.73	0.45	37	3
	CIII (g/o)	0.88	0.33	26	1
	Acro hom ^d	0.93	0.38	27	3
	CVIII	0.97	0.17	33	2
p	Met hom	0.65	0.48	51	3
	CIII (m/p)	0.79	0.43	14	1
	Acro hom	0.97	0.26	60	5
Chromosomes involved in CIII					
q	Met hom	0.75	0.48	48	4
	CIII	0.83	0.38	72	4
	Acro hom	1.00	-	6	1
r	Met hom	0.83	0.42	48	4
	CIII	0.86	0.35	72	4
	Acro hom	1.00	-	6	1

a – metacentric homozygotes

b – CVIII carriers

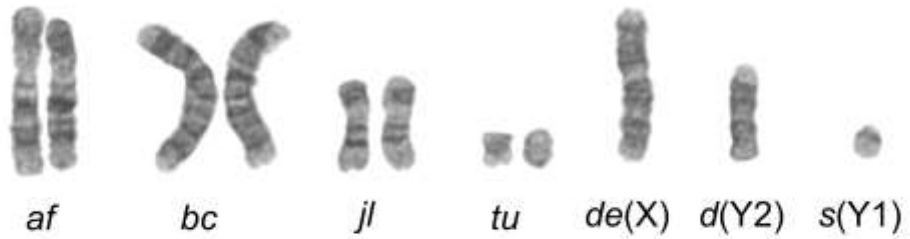
c – CIII carriers

d – acrocentric homozygotes

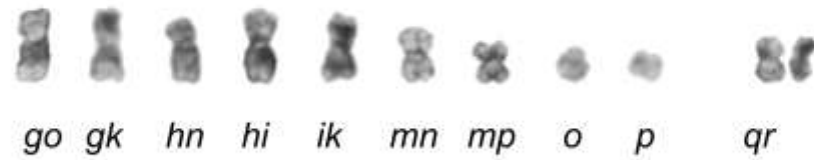
Supplementary Figure S1. G-banded karyotypes of the male shrews of Novosibirsk and Tomsk races and their hybrid.



Novosibirsk race



Tomsk race



F1 hybrid

Supplementary Figure S2. SC length and distance of MLH1 foci from centromeres of the variable chromosome arms involved in different synaptic configurations.

Whole columns show average SC lengths of the chromosome arms from centromeres (bottom) to telomeres (top). Horizontal lines show mean distances of MLH1 foci from centromeres. The caption show colour codes of synaptic configurations. Numbers below each column indicate the number of arms measured (top line) and the arms containing MLH1 foci (bottom line). Bars show S.E.

