

Article

Process Heat Generation Potential from Solar Concentration Technologies in Latin America: The Case of Argentina

Isidoro Lillo ¹, Elena Pérez ^{2,*}, Sara Moreno ¹ and Manuel Silva ¹

¹ Department of Energy Engineering, University of Seville, Camino de los Descubrimientos, s/n 41092 Seville, Spain; isidorolillo@us.es (I.L.); smoreno2@us.es (S.M.); msilva@us.es (M.S.)

² Andalusian Association for Research and Industrial Cooperation, Camino de los Descubrimientos, s/n 41092 Seville, Spain

* Correspondence: eperez@gter.es (E.P.); Tel.: +34-95-448-7239

Abstract: This paper evaluates the potential of solar concentration technologies—compound parabolic collector (CPC), linear Fresnel collector (LFC) and parabolic trough collector (PTC)—as an alternative to conventional sources of energy for industrial processes in Latin America, where high levels of solar radiation and isolated areas without energy supply exist. The analysis is addressed from energy, economic and environmental perspective. A specific application for Argentina in which fourteen locations are analyzed is considered. Results show that solar concentration technologies can be an economically and environmentally viable alternative. Levelized cost of energy (*LCOE*) ranges between 2.5 and 16.9 c€/kWh/m² and greenhouse gas (*GHG*) emissions avoided range between 33 and 348 kgCO₂/(m²·year). CPC technology stands out as the most recommendable technology when the working fluid temperature ranges from 373K to 423K. As the working fluid temperature increases the differences between the *LCOE* values of the CPC and LFC technologies decrease. When 523K is reached LFC technology is the one which presents the lowest *LCOE* values for all analyzed sites, while the *LCOE* values of PTC technology are close to CPC technology values. Results show that solar concentration technologies have reached economic and environmental competitiveness levels under certain scenarios, mainly linked to solar resource available, thermal level requirements and solar technology cost.

Keywords: feasibility; solar thermal energy; heat process; greenhouse gas emissions

1. Introduction

The review of the current situation of the energy sector shows that primary energy consumption is continuously increasing [1]. The analysis of the global energy sources matrix shows that this primary energy demand continues to prefer oil, with a share of 35.7% of the total energy consumption. Natural gas has replaced coal as the second energy resource, meeting 25.6% of the demand, mainly as a result of consumption in the United States and the Middle East. Coal has been relegated to the third energy source, representing 19.3% of the consumption [2]. From these data it is extracted that fossil fuels still account for more than 80% of the global energy matrix.

In the case of Latin America, with about 9% of the world population, the energy consumption represents about 6% of the total energy consumption. In this region about 45% of the energy demand is supplied with oil, 25% with natural gas and the rest by renewable energy, mainly hydro and biomass. In the case of Latin America approximately one third of the total energy consumption is for the transport sector, another third for the industrial sector and the remaining third for domestic and other uses [3].

Fossil energy exists in Latin America, but renewable energy resources are also available. Water and biomass are the only ones that present a significant use. The uses of others such as solar or wind are negligible despite having a high solar resource in virtually all countries [4,5]. One aspect to

consider is the fact that in some Latin American countries, such as Ecuador or Peru, natural gas is subsidized. This has a negative impact on the development and use of renewable energies.

Average daily global horizontal radiation values of Latin America range from 3.5kWh/m² to 7kWh/m² per day although most of the surface shows values between 4kWh/m² and 6kWh/m². The Andean area is the one that presents higher values, as Figure 1 shows [6]. In the case of direct normal radiation there are regions in which the annual values are higher, for example some parts of Chile and Mexico (Figure 2)[6]. As both figures show, the countries of Latin America generally receive high levels of radiation that could be exploited.

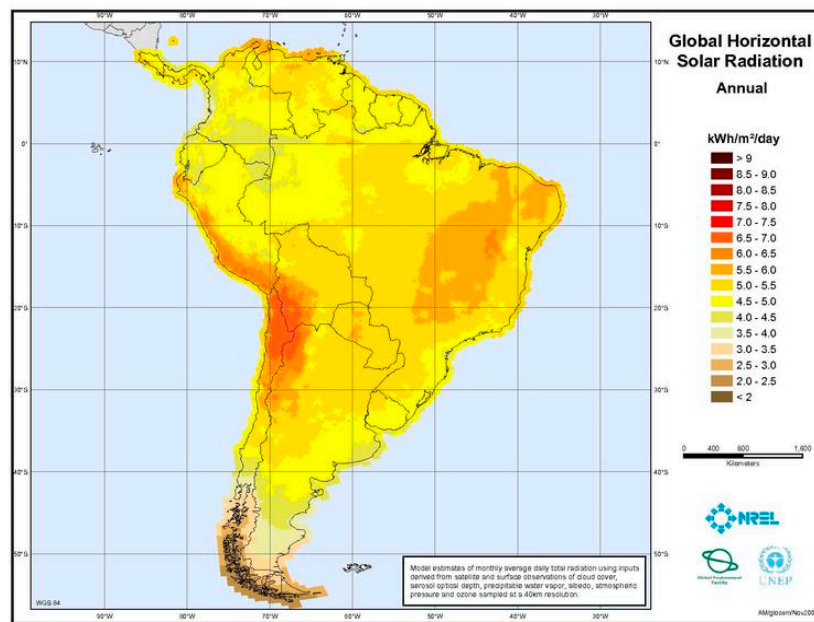


Figure 1. Map of global horizontal radiation of Latin America.

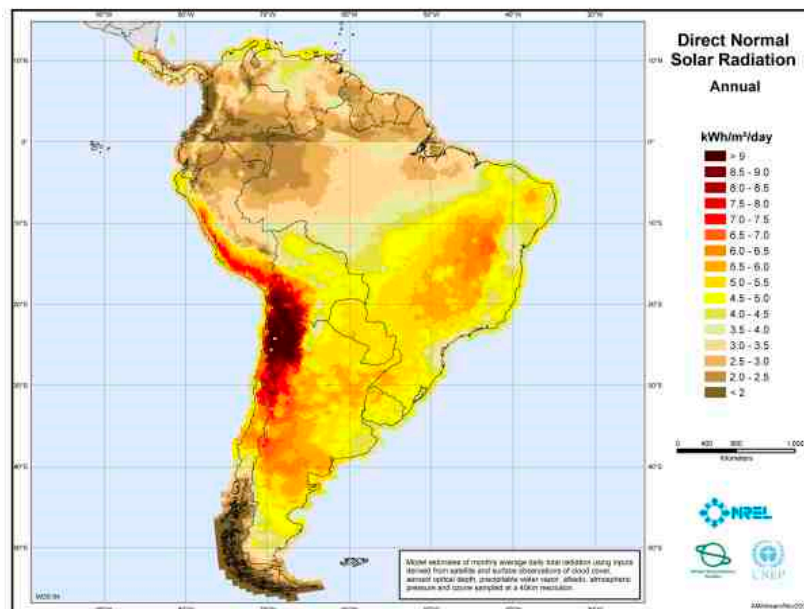


Figure 2. Map of direct normal radiation of Latin America.

High levels of solar radiation have potential for harnessing solar energy. The role that solar energy could acquire as a thermal energy source for industrial processes in which high levels of thermal energy are required is especially interesting. There are many isolated places in Latin America in which the access to conventional sources of energy as electricity or natural gas is

unfeasible and that will be favored by the implementation of this type of solar systems. The lack of energy supply in these areas has led to the development of the economy below its potential. For example, the development and commercialization of products based on raw materials has not been possible. The availability of this source of energy would provide isolated areas with the opportunity of developing this business, which would undoubtedly be associated with the economic development of the region, with an impact on the livelihoods of people.

Most of the energy needs of industrial processes are below 523K, a temperature level which could be readily be supplied by solar thermal energy (STE) [7]. Table 1 summarizes the temperature range of potential industrial processes. In the particular case of isolated areas of Latin America there are two of these applications that are especially interesting, namely the refrigeration and drying of agricultural products.

Table 1. Temperature range of potential industrial processes.

Industry	Process	Temperature Range (K)
Dairy	Sterilization	373-393
	Drying	393-453
Canned food	Sterilization	383-393
Agricultural products	Drying	353-473
Textile	Drying	373-403
	Degreasing	433-453
Paper	Bleach	403-423
	Soaps	473-533
Chemistry	Synthetic rubber	423-473
	Process heat	393-453
	Petroleum	373-423
Wood products	Pulp preparation	393-443
Desalinization	Heat transfer fluid	373-523
Mining	Drying	373-673
	Concentrate smelting	
	Heating solutions	
Plastics	Washing	393-413
	Preparation	
	Distillation	
	Separation	
	Extension	
	Drying	
Thermal treatment	Mixing	393-413
	Medium tempering	623-723
Refrigeration	Double effect solar chiller	393-463

The field of application of solar technologies is large, as it allows heat transfer fluid delivery temperatures higher than 1200K, between 318K and 673K in case of linear focus solar concentration technologies. The selection of one or another technology depends on thermal requirements mainly associated with each industrial process.

Recently several studies that focus on analyzing the possibilities of coupling a solar installation to an industrial process have been developed. These studies identify needed improvements in the collectors used in solar installations responsible for generating process heat, analyze the current market and compile a series of recommendations based on knowledge acquired through experimental facilities. Barriers that still hinder the development of solar installations such as high investment cost, lack of public funding and low costs of conventional energy are identified [8–12]. The first solar installations coupled to an industrial process were based on conventional solar technologies, used for obtaining electricity, but currently industrial processes applications have developed specific designs. As new developments become available, more solar heat for industrial processes applications will become viable [13,14].

The broad range of possibilities offered by solar energy has raised the interest of different countries such as Australia, Germany, Mexico or Tunisia. In the Australian case the research, development and demonstration program in solar industrial process heating was led principally by the Commonwealth Science and Industrial Research Organisation, CSIRO [15]. A study developed in Australia tried to identify potential sites for utilization of STE. The review identified 2498 individual sites by location, industry type, energy use and characteristic process temperature. This data is presented on maps in terms of both industry type, and characteristic process temperature, in discrete ranges for comparison with the approximate irradiation patterns and to identify sites that should be considered for more detailed analysis. Relatively few industrial sites were present in areas of high irradiation. In areas with moderate irradiation, outside major cities, there are numerous sites in the food processing, building products, textiles and wood products industries that could utilize low to moderate temperature solar heat [16]. German studies also have attempted to select the sectors with the greatest potential among them chemicals, paper or rubber industries. These sectors are analyzed to identify suitable processes for the integration of solar heat. The results of these studies facilitate the prioritized application of STE in industrial sectors and processes [17]. Meanwhile Tunisia has analyzed the feasibility of integrating thermal collectors as a source of energy supply of industrial processes. Results show that in 2012 solar thermal systems were not economically interesting for end users with current subsidy schemes, but they could lead to significant economic benefits for the government [18]. Finally, Mexico has also analyzed the potential of solar energy as a source of energy supply for the textile and food sectors [19]. As shown solar heat for industrial processes has been identified repeatedly as an important market for solar thermal applications as the industrial heat demand, proof of that are the numerous emergent applications [20]. Several reports have thoroughly analyzed the contributions of solar energy in meeting the energy requirements of several kind of industries, from the oil industry to the paper, textile or pharmaceutical industry [21–27].

Latin America already has some examples of solar systems that provide totally or partially the thermal energy required by some industrial process. One example is the Kraft Food project in Brazil, in this case corresponding to the food industry. This project consists of a thermal energy system that delivers heat to cook, clean, dry and pasteurize foods. The solar field uses parabolic trough collector (PTC) technology to heat pressurized water at a temperature of 383K. Especially striking is the couple formed by solar systems and mining companies in Chile. One of the most prominent examples is El Tesoro, a subsidiary of Antofagasta Minerals that disposes of 1280 PTC PT-1 modules to provide process heat for copper mining production. Levels of solar radiation in the Atacama Desert, where El Tesoro is located, are very high [28,29]. There is a wide range of possibilities for coupling a solar system to an industrial process [30]. The selection of one or other is done according to the industrial process requirements in each case. Figures 3 and 4 show some of them. The first diagram shows an installation in which residual use of thermal energy exists. The industrial process presented in this figure requires two levels of thermal energy. Figure 4 shows another configuration in which an auxiliary boiler and a heat recovery system are included.

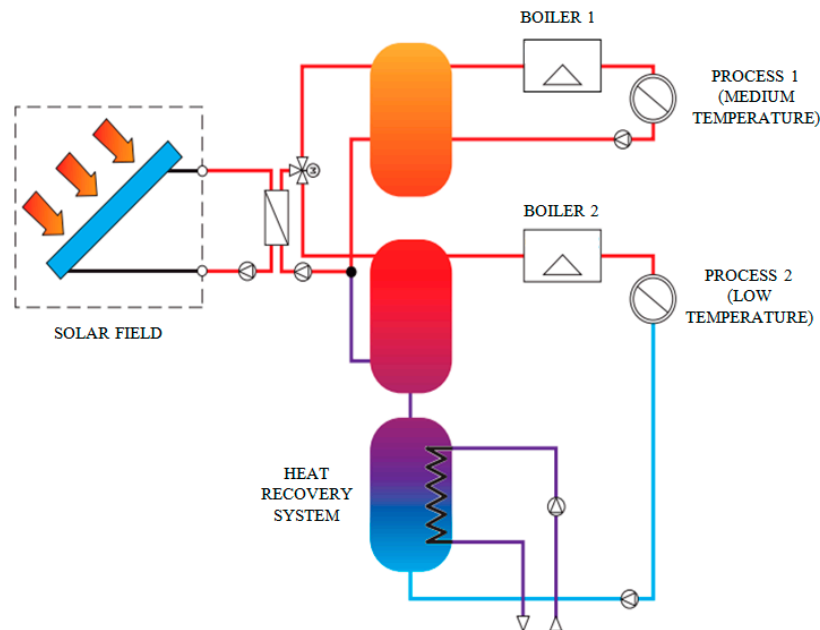


Figure 3. Process heat scheme including use and two levels of thermal energy.

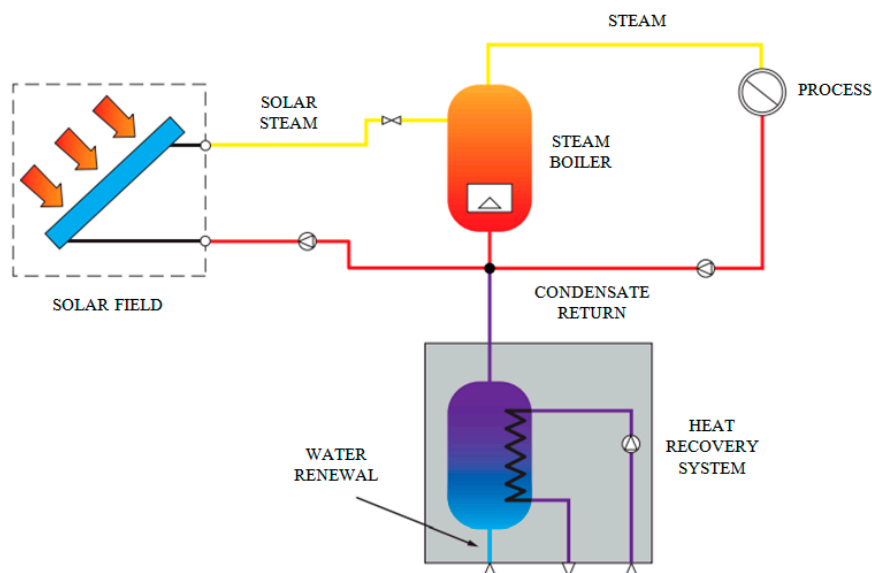


Figure 4. Process heat scheme including an auxiliary boiler and a heat recovery system.

2. Solar Thermal Energy

STE is a set of technologies for harnessing solar energy for use in industry, residential or commercial sectors. The generation of thermal energy from solar radiation is highly recommended because of this option mitigates climate change and replace exhaustible sources. In addition to the environmental benefits already mentioned, solar technologies are related to other benefits linked to increased energy self-sufficiency of each country, provide access to energy required in isolated depressed areas and employment creation effect. Related to the last issue and in the particular case of Spain the economic impact has been evaluated. The results for a typical 50MW parabolic trough plant with 7.5 h storage capacity, the most widespread type in Spain, are [31]:

- A total of 2214 equivalent jobs per year during contracting and construction, including contracting, construction and assembly, as well as manufacture of components and equipment, supply of services and indirect employment.
- A total of 47 equivalent jobs per year during operation.

Solar thermal energy collectors mainly used are flat plate (FP), compound parabolic collector (CPC), linear Fresnel collector (LFC) and PTC. The last three ones are the most used collectors for industrial processes.

2.1. Compound Parabolic Collector

A CPC vacuum tube collector, see Figure 5, is a system composed of a few rows of transparent glass tubes connected to a head pipe. Each tube contains therein an absorption tube coated with selective paint. The heat transfer fluid runs inside this pipe. Vacuum is applied to minimize conduction and convection heat losses. In this type of collectors solar radiation passes through the glass outer tube, strikes the absorber tube and is finally transformed into heat. The overall performance of vacuum tube collectors is higher than that of conventional collectors and maintains a more constant behavior. CPC collectors include annular reflectors that allow a greater concentration of solar radiation onto the absorber tube.



Figure 5.Compound parabolic collector. Source: SOLFEX Energy Systems

2.2. Linear Fresnel Collector

The concept of LFC, see Figure 6, is based on the idea of simulating a continuous concentrator, in this case a parabolic trough collector as a set of elements, rows of mirrors properly arranged on a plane. Problems related to the construction of large concentrators are avoided, allowing taking lower cost solutions. LFC are therefore a low cost alternative to parabolic trough collectors. This kind of systems is composed of long parallel rows of mirrors of relatively small width which can rotate about their longitudinal axis. These mirrors concentrate solar radiation on a fixed central receiver suspended at a certain height. This geometry allows two or more receivers in parallel, relatively close to each other, thus enabling the ranks of mirrors to be shared by two of the receptors. This configuration optimizes the use of land and minimizes blockages among rows of mirrors. The main element of this technology is the absorber tube, which is essentially similar to one used in parabolic trough collector systems.

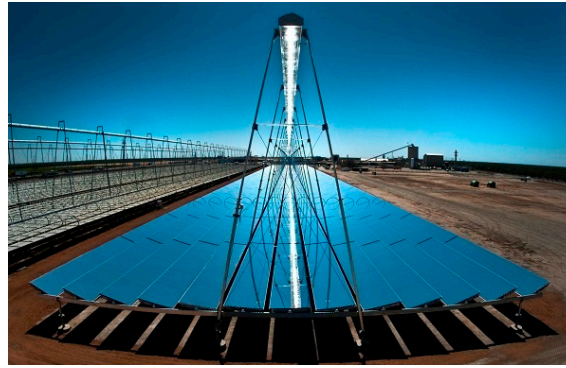


Figure 6.Linear Fresnel collector (LFC).Source: AREVA solar.

2.3.Parabolic Trough Collector

PTC is one of the most mature CSP technologies, accounting for more than 90% of the currently installed CSP capacity. As illustrated in Figure 7, PTC consists of a series of parabolic reflectors that concentrate solar radiation on receiving pipes containing the heat transfer fluid that is heated throughout the process. These collectors are placed in parallel rows that make up the solar field aligned in a north-south or east-west axis. The receivers have a special coating to maximize energy absorption, minimize infrared re-irradiation and work in an evacuated glass envelope to avoid convection heat losses. Nowadays most systems are employed to obtain electric power. In these cases solar heat is moved by a heat transfer fluid flowing in the receiver tube and transferred to a steam generator to produce the super-heated steam that runs the turbine. Mirrors and receivers track the sun's path along a single axis. An array of mirrors can be up to 100 m long with a curved aperture of 5–6 m.

Most PTC plants currently in operation have capacities of between 14 and 80 MW_e, efficiencies of around 14%–16% and maximum operating temperatures of 663K, which is limited by the degradation of synthetic oil used for heat transfer. The use of molten salt at 823K for heat transfer is under demonstration. High-temperature molten salt may increase both plant efficiency and thermal storage capacity [32].



Figure 7.Parabolic trough collector. Source: Enerstar.

3. Configuration of the Plant

The plant that is analyzed in this paper considers that the solar energy system is coupled to a previously existing industrial process. The solar system supplies the thermal energy needed to run the plant. The conventional source of energy of the plant works as an auxiliary power system in the new configuration. Its function is to replace the new system when solar radiation transients do not allow meeting the needs of the industrial process. The characterization of this industrial process is not the subject of this paper but its needs; especially the working temperature determines the most appropriate solar technology. The plant that is analyzed in this paper is mainly composed of a solar field, a heat exchanger and a thermal energy storage system. Thermal energy storage system is considered infinite, in other words, all energy generated is used. Solar part also relies on a control

system that manages the operation of the installation depending on weather conditions. The solar field is in charge of capturing solar radiation and raising the temperature of the heat transfer fluid. To cover the entire temperature range this paper analyzes CPC, LFC and PTC technologies.

To evaluate the thermal energy available at the output of the solar field the efficiency curves of each technology are required. The efficiency curves associated with the best available technology have been selected. The general expression of efficiency curves is as follows:

$$\eta_{sf} = \eta_0 - (c_1 + c_2 \cdot \Delta T) \cdot (\Delta T / G_T) \quad (1)$$

where η_{sf} : instantaneous solar field efficiency; η_0 : optical efficiency; c_1 : first order heat loss coefficient ($W/K \cdot m^2$); c_2 : second order heat loss coefficient ($W/K^2 \cdot m^2$); ΔT : difference between the mean fluid temperature and the ambient temperature (K); and G_T : incident solar radiation (W/m^2).

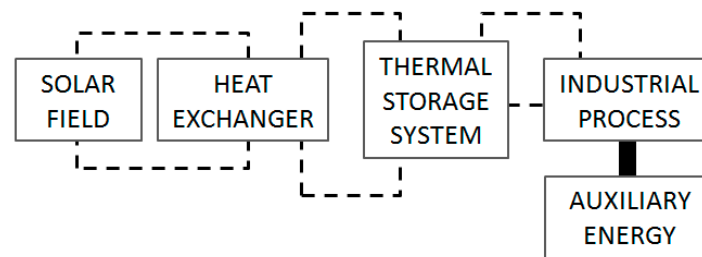


Figure 8. Configuration of the analyzed plant.

Table 2 specifies the coefficients of the equation above. The PTC efficiency coefficients shown in Table 2 correspond to an evolved version of collectors used in solar thermal power plants. Although traditionally PTC can also be allocated to process heat, cooling or heating, new collectors have been recently developed specially designed for producing thermal energy in building environments. New collectors are usually simpler and more compact than the other ones used for electricity production. Their new configuration allows them to be integrated easily in urban or industrial environments. Some of their characteristics are a lower opening, height and weight, which generally results in facilities in transport and assembly.

Table 2. Coefficients of efficiency curves. CPC: compound parabolic collector; LFC: linear fresnel collector and PTC: parabolic trough collector.

Technology	η_0	c_1	c_2	References
CPC	0.693	0.9215	0.0038	[30,33–35]
LFC	0.667	0.1020	0.0002	[30,36]
PTC	0.718	0.5000	0.0005	[30,36,37]

Figure 9 shows the efficiency evolution of medium temperature solar concentration technologies in a temperature range from 293K to 633K. It is noted that the CPC efficiency curve shows greater variability, while the steadiest behaviour is associated with the LFC technology.

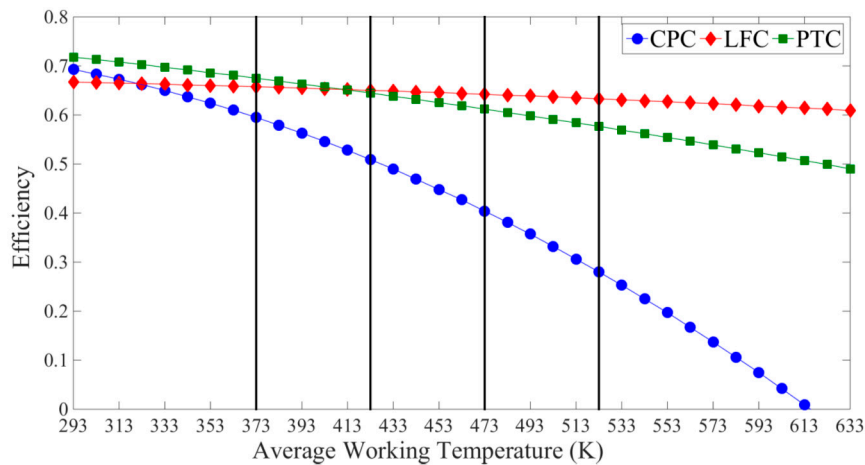


Figure 9. Efficiency curves.

Thermal energy generated in the solar field is transferred to the industrial process through the heat exchanger and the solar storage system. The estimated efficiencies of the equipment—exchanger η_{he} and energy storage system η_{SAT} —are 90% [38].

4. Economic Parameters

Table 3 summarizes the investment costs (C_I), operation and maintenance costs (C_{OM}) and replacement costs (C_R) related to each one of the analyzed technologies. C_I is calculated on the basis of the area used while the other two costs are calculated as a percentage of the C_I .

Table 3. Solar technology costs.

Technology	Costs			References
	C_I	C_{OM}	C_R	
	€/m ²	% C_I	% C_I	
CPC	325	2.5	10.0	[8,30,39]
LFC	425	5.0	10.0	[8,30,36,40,41]
PTC	560	5.5	10.0	[30,36,37,39,41]

C_{OM} is calculated annually while C_R is related to an installation overhaul that is carried out in the fifteenth year of operation. To address the economic analysis is necessary to define the useful life of the analyzed installation, 30 years in this study [42]. The residual value of solar system after these 30 years is considered void.

5. Methodology

The methodology developed in this report consists of three phases in which are included the evaluation of thermal energy generated by the solar field, the estimation of levelized cost of energy (LCOE) and the analysis of environmental advantages.

5.1. Evaluation of Thermal Energy Generated by the Solar Field

This first phase attempts to evaluate the thermal energy generated by the solar field for the selected site, technology and thermal level. The main objective in this phase is to quantify the relevance that solar energy can achieve as thermal energy source by its incorporation into the industrial sector.

The thermal energy generated by the solar field (E_{sf}) is evaluated according to the following expression in which the variable I_t represents the hourly incident solar radiation on the collector, depending on the technology under consideration. Global radiation when CPC technology is used and direct radiation when LFC or PTC are considered. The solar field efficiency (η_{sf}) of this expression is specified for each technology in Table 2. To evaluate the thermal energy generated per

unit area over a full year is considered the sum of the product of hourly radiation and solar field efficiency from first (i_i) to last (i_f) record:

$$E_{sf} = \sum_{t=i_i}^{i_f} I_t \cdot \eta_{sf_t} \quad (2)$$

The available energy at the output of the solar field differs from the useful energy for the industrial process (EIP) due to thermal losses associated to the heat exchanger and the thermal energy storage system. To evaluate the useful energy at the output of the energy storage system the estimated efficiencies of both equipments η_{he} and η_{SAT} are used, respectively. According to the configuration of the plant showed in Figure 8, the following expression is applied:

$$E_{IP} = \sum_{t=i_i}^{i_f} E_{sf_t} \cdot \eta_{he} \cdot \eta_{SAT} \quad (3)$$

5.2. Estimation of Levelized Cost of Energy

The second stage of the methodology estimates the *LCOE* parameter. This is used to compare the cost associated with the generation of thermal energy when different solar technologies or thermal levels are analyzed. The *LCOE* is evaluated according to the following expression in which the numerator considers the expenses that take place throughout all the useful life and the denominator considers the energy generated over the same period [43]. The variables r and s of this expression represent the average rate of consumer price index and the average energy price, both of them highly dependent on the country examined:

$$LCOE = \frac{\left[C_I + \sum_{t=i_i}^{i_f} \frac{C_{OMt}}{(1+r)^t} + \frac{C_R}{(1+r)^{15}} \right]}{\left[\sum_{t=i_i}^{i_f} \frac{E_{IPt}}{(1+s)^t} \right]} \quad (4)$$

5.3. Analysis of Environmental Advantages

The last phase of this methodology evaluates the environmental advantages associated with the replacement of conventional sources of energy by solar systems. These advantages are evaluated in terms of greenhouse gas (*GHG*) avoided. This paper considers two scenarios, the substitution of electricity and natural gas. In both cases it is necessary to calculate the quantity of electricity or natural gas that allow to obtain an equivalent amount of thermal energy to the one generated by the solar system (E_{IP}).

To evaluate the equivalent amount of electricity (E_e) it is considered Joule effect. The *GHG* emissions avoided by the use of a solar system instead of electricity (GHG_e) are calculated using the electricity conversion factor (FP_e) characteristic of each site analyzed:

$$GHG_e = E_e \cdot FP_e \quad (5)$$

In the case of natural gas it is considered that the fuel is used in a boiler. Thermal energy is generated by a combustion process. The natural gas lower heating value (LHV) and the efficiency boiler (η_b) are 8.18 kWh/m³ and 96%, respectively [44]. The volume (V) of natural gas used is calculated according to the following expression:

$$V = E_{IP} / (LHV \eta_b) \quad (6)$$

GHG emissions avoided are obtained as in Equation (5), taking into account that FP_{ng} represents the natural gas conversion factor. FP_e and FP_{ng} provide the conversion factor from final energy to quantity of CO₂ emissions:

$$GHG_{ng} = V \cdot FP_{ng} \quad (7)$$

6. Application

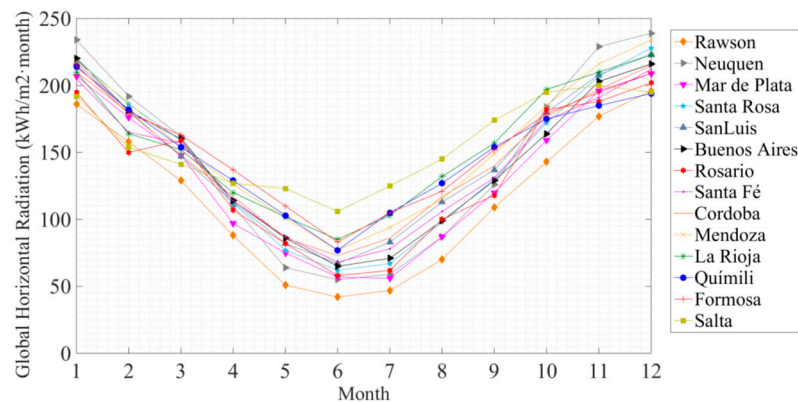
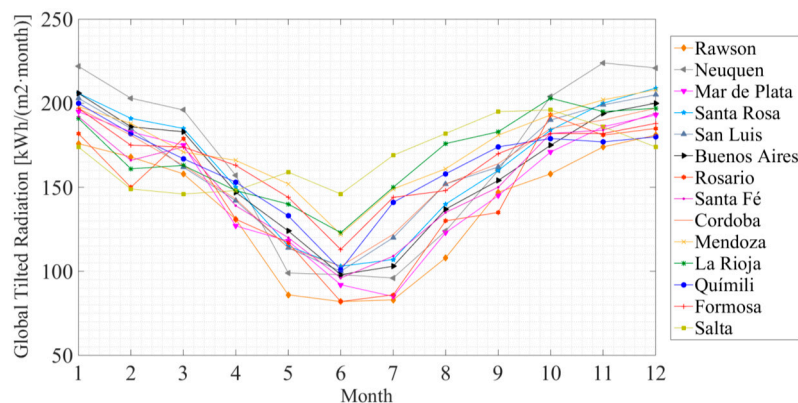
The application of the methodology described above analyzes the specific case of Argentina. This country has been selected due to its daily global horizontal radiation that ranges from 3.8kWh/m² to 5.2kWh/m² and daily direct normal radiation that ranges from 3.7kWh/m² to 5.5kWh/m². These ranges of daily radiation values represent the majority of radiation levels throughout Latin America.

To evaluate the possibilities of development of process heat generation in Argentina it is necessary to know the solar resources available. For this purpose a total of fourteen sites have been selected according to two criteria: these sites must be distributed around all the territory and zones of different levels of radiation must be covered. Table 4 lists the selected sites; they are identified numerically and their geographical coordinates are specified. Since it is complex to dispose of representative series of radiation measurements, especially in the case of direct normal radiation, the Meteonorm software (Version V.7.1.4, Meteotest, Switzerland) [45] has been used to obtain a representative solar year for each site in hourly frequency. Table 4 shows, in addition to latitude and length, the annual global horizontal radiation (H_{g0}), annual tilted global radiation (H_{gi}), annual direct normal radiation (H_{bn}), annual direct radiation on the collector (H_{bc}) and average ambient temperature (T_{amb}). To evaluate H_{gi} the optimum inclination (I_{opt}) has been selected for each site. This is the one that provides the highest annual global radiation.

Table 4. Geographical, radiometrical and meteorological data of selected sites.

Site	Latitude	Length	H_g	H_g	H_b	H_b	T_{amb}	I_{opt}
			kWh/(m ² ·year)				K	°
1	Rawson	43°18'00"S 65°06'00"W	1396	1652	1341	1120	288	38
2	Neuquen	38°57'00"S 68°04'00"W	1742	2005	1915	1644	289	33
3	Mar de Plata	38°00'00"S 57°33'00"W	1587	1791	1531	1294	287	33
4	Santa Rosa	36°37'00"S 64°17'00"W	1717	1950	1815	1534	289	31
5	San Luis	33°18'00"S 66°21'00"W	1751	1934	1767	1497	291	28
6	Buenos Aires	34°36'47"S 58°22'38"W	1707	1907	1693	1428	290	29
7	Rosario	32°57'04"S 60°39'59"W	1603	1751	1432	1211	291	27
8	Santa Fe	31°38'00"S 60°42'00"W	1687	1842	1531	1290	292	26
9	Córdoba	31°24'00"S 64°11'00"W	1746	1911	1673	1410	291	26
10	Mendoza	32°53'00"S 68°49'00"W	1856	2091	1995	1648	290	32
11	La Rioja	29°26'00"S 66°51'00"W	1854	2031	1860	1546	294	29
12	Quimilí	27°38'00"S 62°25'00"W	1799	1944	1656	1376	295	22
13	Formosa	26°11'00"S 58°11'00"W	1848	1981	1657	1378	295	26
14	Salta	24°47'00"S 65°25'00"W	1878	2026	1804	1472	290	24

Figures 10–13 show the monthly variability between solar radiation components for the fourteen selected sites. It can be seen that global horizontal radiation trend is similar to all sites, with the only exception of Salta that is slightly higher. In the case of global tilted radiation the behavior is more dispersed, however no significant conclusions can be drawn because the optimum inclination considered is different in each case. On the other hand it is observed that direct normal radiation is the variable that presents a greater variability, reaching maximum differences of 60% between different sites in June and July. The annual evolution of monthly incident direct radiation shows a behavior that is significantly more stable.

**Figure 10.** Annual evolution of monthly global horizontal radiation.**Figure 11.** Annual evolution of monthly global tilted radiation at optimum inclination.

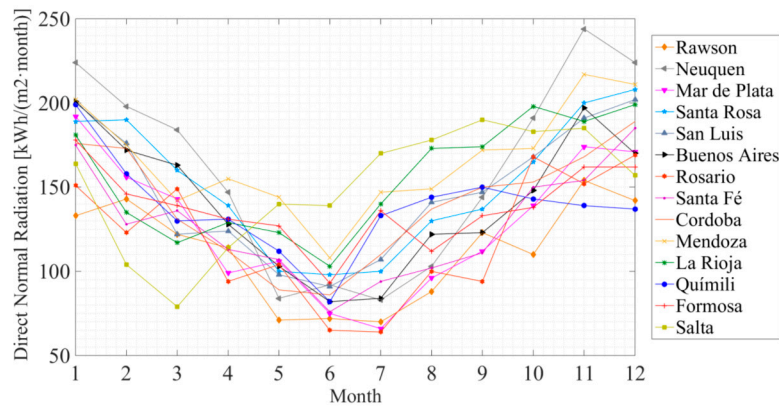


Figure 12. Annual evolution of monthly direct normal radiation.

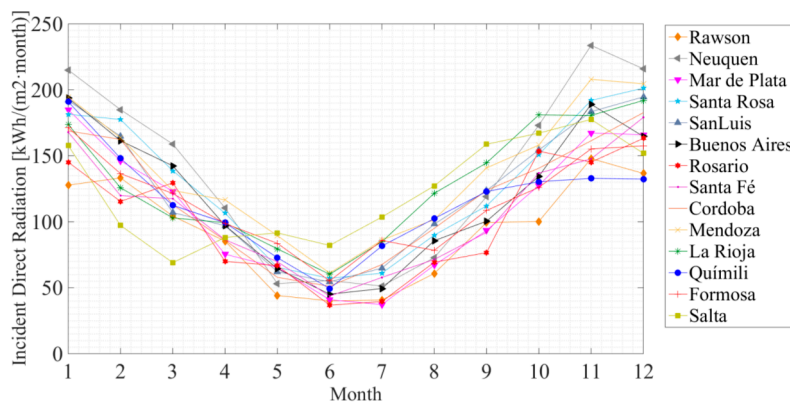


Figure 13. Annual evolution of monthly incident direct radiation.

Monthly production of thermal energy will be proportional to the radiation values shown above when one of the solar technologies considered is employed. In the case of ambient temperature it is observed that all sites show a similar trend. Maximum differences of 11K in October and November are reached (Figure 14).

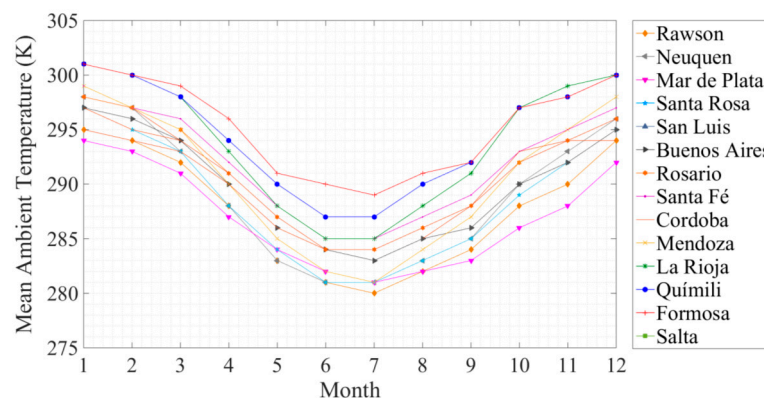


Figure 14. Annual evolution of monthly mean ambient temperature.

7. Results and Discussion

7.1. Evaluation of Thermal Energy Generated by the Solar Field

Employing Equations (2) and (3) of the methodology described above the thermal energy that a solar system can provide to an industrial process is obtained. Tables 5–7 summarize the obtained results when CPC, LFC and PTC technologies are employed from 373K to 523K in 50K. This range of

temperatures has been selected because the most part of industrial process requirements fall within this interval. The analysis of these results shows that all technologies maintain similar behavior irrespective of their location. Figures 15–17 show these results graphically.

Table 5. Annual thermal energy generated by solar system using CPC technology in a temperature range from 373K to 523K.

Site	Annual Thermal Energy Generated (kWh/(m ² ·year))			
	Thermal Level (K)			
	373	423	473	523
Rawson	636	449	272	129
Neuquen	828	622	412	221
Mar de Plata	698	500	310	150
Santa Rosa	795	590	381	196
San Luis	789	585	381	203
Buenos Aires	772	569	365	188
Rosario	693	503	315	158
Santa Fe	742	544	345	175
Córdoba	773	567	362	187
Mendoza	872	656	433	232
La Rioja	852	642	421	222
Quimilí	806	597	385	198
Formosa	824	613	394	202
Salta	832	618	401	210

Table 6. Annual thermal energy generated by solar system using LFC technology in a temperature range from 373K to 523K.

Site	Annual Thermal Energy Generated (kWh/(m ² ·year))			
	Thermal Level (K)			
	373	423	473	523
Rawson	545	532	517	499
Neuquen	836	819	799	777
Mar de Plata	639	624	607	589
Santa Rosa	772	756	737	716
San Luis	752	737	720	701
Buenos Aires	716	700	682	662
Rosario	599	586	570	553
Santa Fe	638	624	607	589
Córdoba	701	686	669	650
Mendoza	836	819	799	777
La Rioja	777	761	743	722
Quimilí	682	668	651	632
Formosa	687	672	654	634
Salta	733	718	701	682

Table 7. Annual thermal energy generated by solar system using PTC technology in a temperature range from 373K to 523K.

Site	Annual Thermal Energy Generated (kWh/(m ² ·year))			
	Thermal Level (K)			
	373	423	473	523
Rawson	525	468	408	344
Neuquen	822	749	671	588
Mar de Plata	619	557	491	423
Santa Rosa	756	688	614	537
San Luis	742	679	610	538
Buenos Aires	750	676	596	512

Rosario	585	528	466	402
Santa Fe	623	563	499	431
Córdoba	687	624	556	484
Mendoza	822	750	673	591
La Rioja	807	729	646	558
Quimilí	671	608	541	470
Formosa	673	607	536	460
Salta	721	658	591	520

The abscissa axis of these graphs show the different sites listed from 1 to 14 in Table 4 while the ordinate axis includes thermal levels considered.

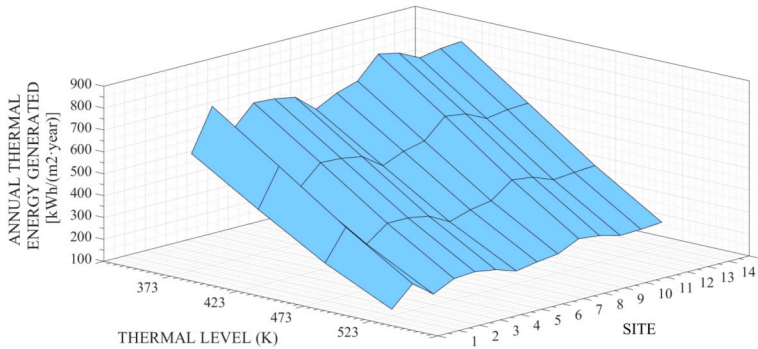


Figure 15. Annual thermal energy generated by CPC technology depending on site.

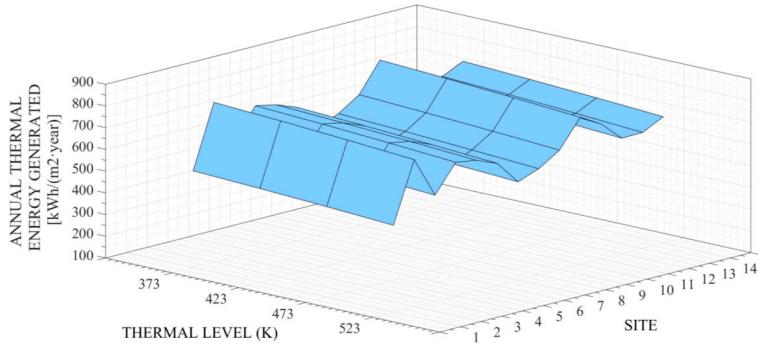


Figure 16. Annual thermal energy generated by LFC technology depending on site.

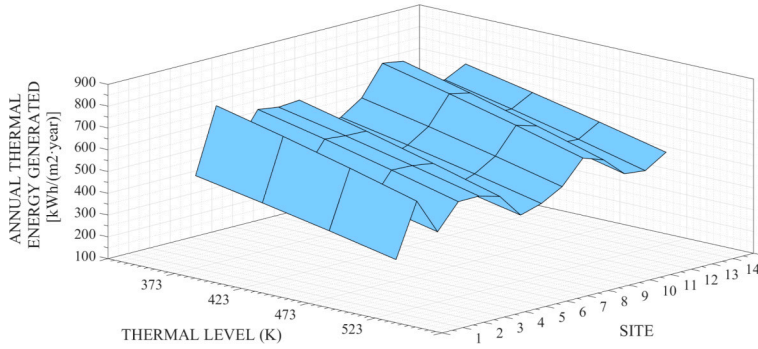


Figure 17. Annual thermal energy generated by PTC technology depending on site.

Figures 15–17 verify the previous statement which indicates that all different technologies show common operation standards for all locations. In the case of CPC technology it can be observed general downgrades of thermal energy generated by solar system when working temperature increases. This result is consistent with the efficiency curve of the CPC technology shown in Figure 9. When LFC and PTC are involved it can be observed a similar behavior although softer for both

technologies. Between the options considered Mendoza can be highlighted as the one which presents a higher thermal energy obtained for all options, while Rawson is at the other extreme. When LFC technology is analyzed Neuquen and Mendoza show similar thermal production results.

7.2. Estimation of Levelized Cost of Energy

The second block of results summarizes the *LCOE* associated with each combination of site, technology and thermal level. Table 8 shows the *LCOE* interval for each site and technology in a temperature range from 373K to 523K. To obtain these results Equation (4) of the methodology, the economical information included in Table 3 and thermal energy generated in each case are required. It is also necessary to know the value of the parameters *r* and *s*. These parameters depend heavily on the economical situation of each country. In the case of Argentina are assumed to be of 2% and 1.4%, respectively, although these ratios depend on the country and period of time analyzed.

Table 8. Range of levelized cost of energy (*LCOE*) depending on technology and site considered.

Site	<i>LCOE</i> (c€/kWh/m ²)		
	Technology		
	CPC	LFC	PTC
Rawson	3.4–16.9	7.0–7.7	10.1–15.4
Neuquen	2.6–9.9	4.6–4.9	6.4–9.0
Mar de Plata	3.1–14.5	6.0–6.5	8.6–12.5
Santa Rosa	2.7–11.1	5.0–5.3	7.0–9.9
San Luis	2.8–10.7	5.1–5.5	7.1–9.9
Buenos Aires	2.8–11.6	5.3–5.8	7.1–10.4
Rosario	3.1–13.8	6.4–6.9	9.1–13.2
Santa Fe	2.9–12.5	6.0–6.5	8.5–12.3
Córdoba	2.8–11.7	5.5–5.9	7.7–11.0
Mendoza	2.5–9.4	4.6–4.9	6.4–9.0
La Rioja	2.6–9.8	4.9–5.3	6.6–9.5
Quimilí	2.7–11.0	5.6–6.1	7.9–11.3
Formosa	2.6–10.8	5.6–6.0	7.9–11.5
Salta	2.6–10.4	5.2–5.6	7.4–10.2

Figures 18–21 show the *LCOE* evolution depending on the thermal level of the industrial process.

CPC stands out as the most recommendable technology when the working fluid temperature ranges from 373K to 423K. In this interval of temperature the LFC technology almost doubles the *LCOE* values of CPC technology while the PTC technology almost triples it.

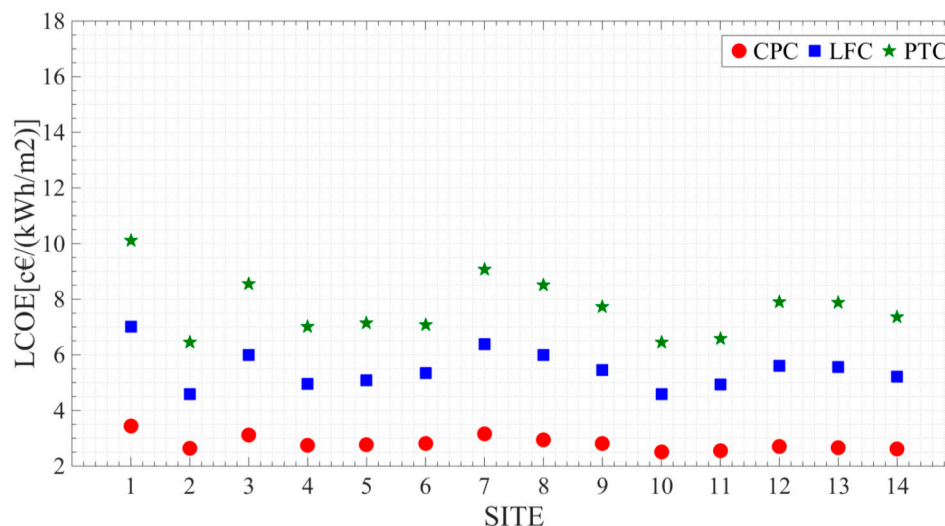


Figure 18. Influence of site and technology on the *LCOE* for a thermal level of 373K.

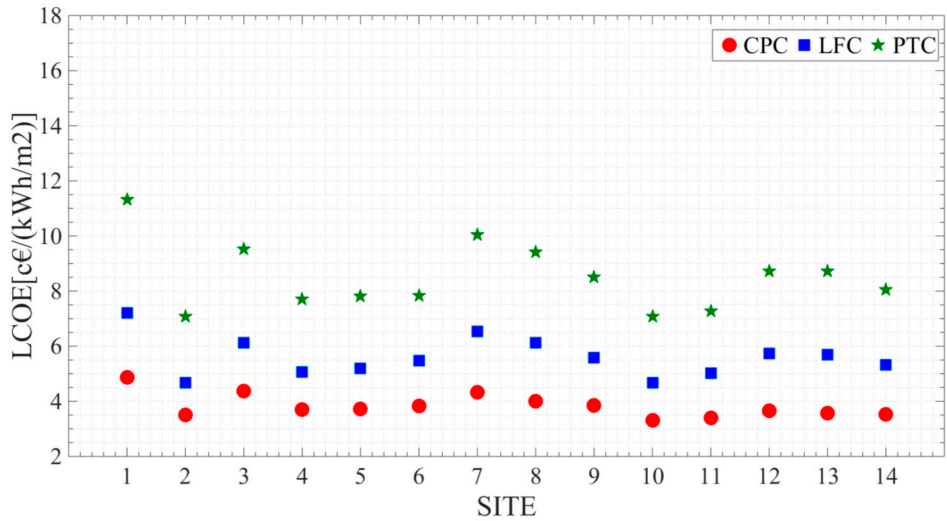


Figure 19. Influence of site and technology on the *LCOE* for a thermal level of 423K.

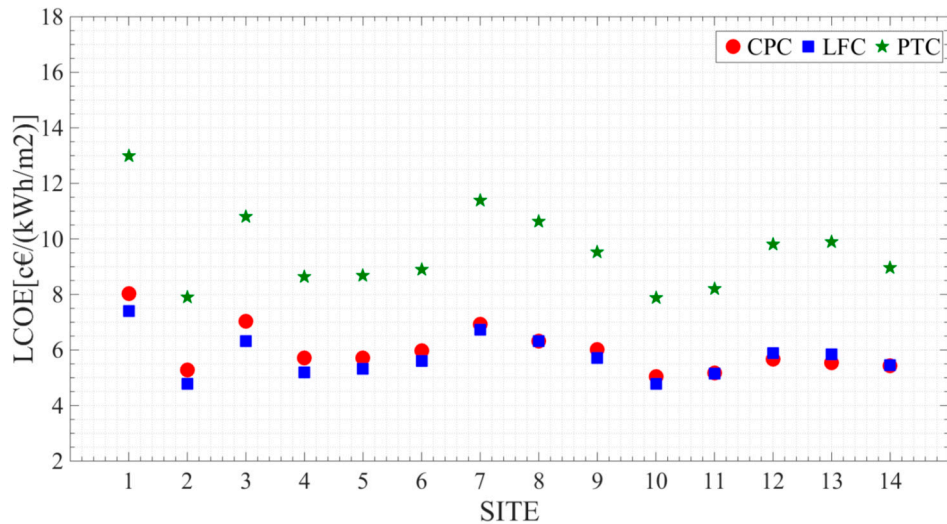


Figure 20. Influence of site and technology on the *LCOE* for a thermal level of 473K.

As working fluid temperature increases, the differences between the *LCOE* values of CPC and LFC technologies decrease as Figure 20 shows.

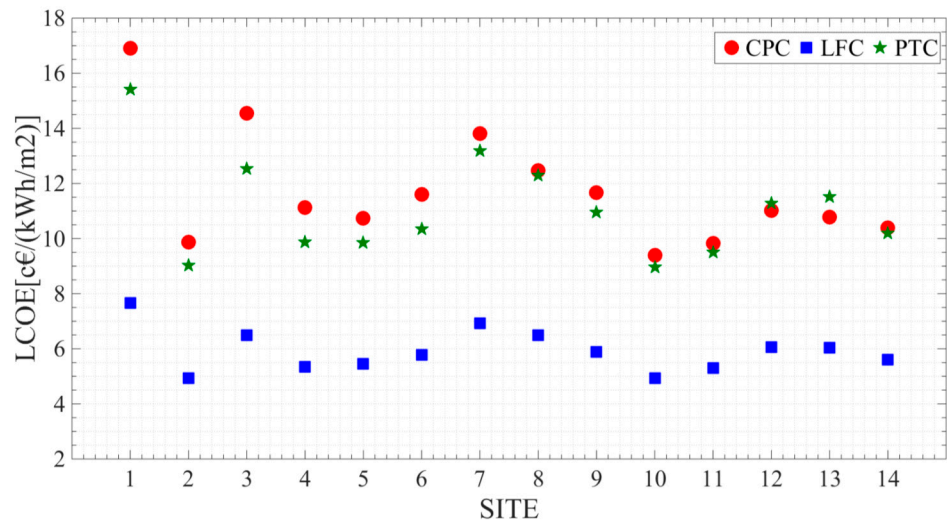


Figure 21. Influence of site and technology on the *LCOE* for a thermal level of 523K.

Figure 21 shows a substantial change, as can be observed the LFC technology is the one which presents the lowest *LCOE* values for all sites. The *LCOE* values of PTC technology are close to the CPC technology values.

In the specific case of Buenos Aires the natural gas tariff for industrial sector costumers (minimum consumption of 3,200,000m³) is 0.62 €/m³ and is tax free [46]. If it is considered that this cost remains constant over the useful life of a solar system, the average consumer price index rate is 2% and the Euro-Argentine peso exchange ratio is 0.060220 [47], so the equivalent cost of thermal energy generation is 5.87 €/kWh. If this result is compared to those listed in Table 8 it is found that in Argentina a solar system would be economically interesting as a source of thermal energy for an industrial process when CPC in the lower temperatures range or LFC technologies are used.

7.3. Analysis of Environmental Advantages

In order to use the methodology described above it is necessary to dispose of FP_e and FP_{ng} parameters. Table 9 shows the conversion factors for the particular case of Argentina [48].

Table 9. Conversion factors of electricity and natural gas.

Source of energy	Conversion Factor
Electricity	0.399 kgCO ₂ /kWh
Natural Gas	0.252 kgCO ₂ /kWh

Finally *GHG* emissions avoided by using one of the solar concentration technologies options coupled to an industrial process instead of electricity or natural gas energy are summarized in Tables 10 and 11. The results shown in Tables 10 and 11 are directly proportional to the thermal energy generated by the solar systems.

Kilograms of CO₂ avoided by replacing electricity as a source of thermal energy are greater than the option in which natural gas is replaced, as might be expected from the given values of the parameters FP_e and FP_{ng} .

Table 10. Greenhouse gas (*GHG*) emissions annually avoided depending on site and thermal level when a solar system is used instead of electricity.

Site	<i>GHG</i> Emissions Avoided (kgCO ₂ /(m ² -year))											
	CPC				LFC				PTC			
	Thermal Level (K)				Thermal Level (K)				Thermal Level (K)			
	373	423	473	523	373	423	473	523	373	423	473	523
Rawson	254	179	109	51	217	212	206	199	209	187	163	137
Neuquen	330	248	164	88	334	327	319	310	328	299	268	235
Mar de Plata	279	200	124	60	255	249	242	235	247	222	196	169
Santa Rosa	317	235	152	78	308	302	294	286	302	275	245	214
San Luis	315	233	152	81	300	294	287	280	296	271	243	215
Buenos Aires	308	227	146	75	286	279	272	264	299	270	238	204
Rosario	277	201	126	63	239	234	227	221	233	211	186	160
Santa Fe	296	217	138	70	255	249	242	235	249	225	199	172
Córdoba	308	226	144	75	280	274	267	259	274	249	222	193
Mendoza	348	262	173	93	334	327	319	310	328	299	269	236
La Rioja	340	256	168	89	310	304	296	288	322	291	258	223
Quimilí	322	238	154	79	272	267	260	252	268	243	216	188
Formosa	329	245	157	81	274	268	261	253	269	242	214	184
Salta	332	247	160	84	292	286	280	272	288	263	236	207

Table 11. GHG emissions annually avoided depending on site and thermal level when a solar system is used instead of natural gas.

Site	GHG Emissions Avoided (kgCO ₂ /(m ² ·year))											
	CPC				LFC				PTC			
	Thermal Level (K)				Thermal Level (K)				Thermal Level (K)			
	373	423	473	523	373	423	473	523	373	423	473	523
Rawson	160	113	69	33	137	134	130	126	132	118	103	87
Neuquen	209	157	104	56	211	206	201	196	207	189	169	148
Mar de Plata	176	126	78	38	161	157	153	148	156	140	124	107
Santa Rosa	200	149	96	49	195	191	186	180	191	173	155	135
San Luis	199	147	96	51	190	186	181	177	187	171	154	136
Buenos Aires	195	143	92	47	180	176	172	167	189	170	150	129
Rosario	175	127	79	40	151	148	144	139	147	133	117	101
Santa Fe	187	137	87	44	161	157	153	148	157	142	126	109
Córdoba	195	143	91	47	177	173	169	164	173	157	140	122
Mendoza	220	165	109	58	211	206	201	196	207	189	170	149
La Rioja	215	162	106	56	196	192	187	182	203	184	163	141
Quimilí	203	150	97	50	172	168	164	159	169	153	136	118
Formosa	208	154	99	51	173	169	165	160	170	153	135	116
Salta	210	156	101	53	185	181	177	172	182	166	149	131

8. Conclusions

This paper reviews the potential application of solar concentration technologies as sources of heat for industrial processes in which thermal energy are required. High levels of solar radiation observed in Latin America show that solar concentration technologies can become an interesting alternative, not only to replace conventional sources of energy in existing installations, but also to provide thermal energy in isolated areas. This possibility will provide an opportunity for the local development to isolated communities. The use of solar energy is linked to improved environmental impact, energy dependence, local development and job creation.

Public administrations must quantify the advantages of solar thermal energy from all points of view, especially in those countries in which conventional sources of energy are subsidized. This fact affects the development and widespread use of solar systems in isolated areas of Latin America.

The methodology proposed in this paper evaluates the thermal energy generated per unit area by solar system, the *LCOE* and the GHG emissions avoided by using solar energy instead of a conventional source of energy. This methodology is applied for the particular case of fourteen selected sites of Argentina which include the most representative levels of solar radiation of Latin America.

From the point of view of thermal energy production per unit area the CPC technology stands out as the most recommended option when the temperature of the working fluid is almost 373K. By increasing the temperature of the working fluid, at least until 523K, the recommended technology is LFC.

From an economic perspective CPC is highlighted as the most recommendable technology when the working fluid temperature ranges from 373K to 423K. In this interval of temperature the LFC technology almost doubles the *LCOE* values of CPC technology, while the PTC technology almost triples them. As the working fluid temperature increases to around 473K, the differences between the *LCOE* values of CPC and LFC technologies decrease. When 523K is reached LFC technology is the one which presents the lowest *LCOE* values for all sites, while the *LCOE* values of PTC technology are close to the CPC technology values.

LCOE values related to CPC technology vary between 2.5c€/ (kWh·m²) and 16.9c€/ (kWh·m²). In the case of LFC technology this interval ranges from 4.6c€/ (kWh·m²) and 7.7c€/ (kWh·m²) while for PTC technology the interval extends from 6.4c€/ (kWh·m²) to 15.4c€/ (kWh·m²). These rates change depending on the site analyzed and the thermal energy required by the industrial process. CO₂ emissions avoided when solar technologies are used instead of conventional sources of energy vary

between 51 (kgCO₂/(m²·year)) and 348 (kgCO₂/(m²·year)) when electrical energy is substituted, whereas when natural gas is replaced, this rate ranges from 33 (kgCO₂/(m²·year)) and 220 (kgCO₂/(m²·year)).

Acknowledgments: All sources of funding of the study should be disclosed. Please clearly indicate grants that you have received in support of your research work. Clearly state if you received funds for covering the costs to publish in open access.

Author Contributions: I.L. and E.P. raised the paper and drafted it, S.M. performed the calculations and M.S. evaluated solar technologies parameters. All authors reviewed the paper.

Conflicts of Interest: The authors declare no conflict of interest.

Nomenclature

c_1	First order heat loss coefficient
c_2	Second order heat loss coefficient
C_i	Investment costs
C_{OM}	Operation and maintenance costs
CPC	Compound parabolic collector
C_R	Replacement costs
CSP	Concentrating solar power
E_e	Electrical energy
E_{IP}	Industrial process energy
E_{sf}	Solar field energy
FP	Flat plate
FP_e	Electricity conversion factor
FP_{ng}	Natural gas conversion factor
GHG	Greenhouse gas
G_T	Incident solar radiation
Hb_c	Direct radiation on the collector
Hb_n	Direct normal radiation
Hg_0	Global horizontal radiation
Hg_i	Tilted global radiation
i_t	Last record
i_i	First record
I_{opt}	Optimum inclination
LCOE	Levelizedcost of energy
LFC	Linear fresnel collector
LHV	Lower heating value
η_0	Optical efficiency
η_b	Boiler efficiency
η_{he}	Heat exchanger efficiency
η_{SAT}	Energy storage system efficiency
η_{sf}	Solar field efficiency
PTC	Parabolic trough collector
r	Consumer price index
s	Energy price index
STE	Solar thermal energy
T_{amb}	Mean ambient temperature
V	Volume

References

1. British Petroleum. *Primary Energy Consumption—Leading Countries 2014*; Petroleum Industry Company: London, UK, 2015.
2. International Energy Agency. *Key World Energy Statistics 2015*; International Energy Agency: Paris, France, 2015.
3. Moreno, I.; Palenzuela, P. *América Latina. Una aproximación Pluridisciplinar*; Aconcagua Libros: Seville, Spain, 2013. (Spanish)

4. Majano, A.M. *Desarrollo Sostenible: Medio Ambiente, Cambio Climático y Energía*; Banco Interamericano de Desarrollo: Washington, DC, USA, 2008. (Spanish)
5. Sebastian, K.; Peter, M. *El Potencial de América Latina con Referencia a la Energía Renovable*; Global Energy Network Institute: San Diego, CA, USA, 2009; pp. 1–83. (Spanish)
6. National Renewable Energy Laboratory. Available online: www.nrel.org (accessed on 17 October 2016).
7. Roldán Serrano, M.I. *Diseño y análisis térmico de un sistema receptor volumétrico para un horno solar de alta temperatura*; CIEMAT: Madrid, Spain, 2013.
8. International Renewable Energy Agency. Solar Heat for Industrial Processes. In *Technology Brief*; International Renewable Energy Agency: Abu Dhabi, UAE, 2015.
9. Aidonis, A.; Drosou, V.; Mueller, T.; Staudahe, L.; Fernandez-Llebrez, F.; Oikonomou, A.; Spencer, S. PROCESOL II. Solar thermal plants in industrial processes. In *Design and Maintenance Guidelines*; Centre for Renewable Energy Sources: Pikermi, Greece, 2002.
10. Krummenacher, P.; Muster, B. *Methodologies and Software Tools for Integrating Solar Heat into Industrial Processes*; International Energy Agency: Paris, France, 2015.
11. Cottret, N.; Menichetti, E. *Technical Study Report on Solar Heat For Industrial Processes (SHIP) State of the Art in the Mediterranean Region*; Observatoire Méditerranéen de l'Energie: Nanterre, France, 2010.
12. European Solar Thermal Industry Federation. *Solar Industrial Process Heat. State of the Art*; European Solar Thermal Industry Federation: Brussels, Belgium, 2006.
13. Larcher, M.; Rommel, M.; Bohren, A.; Frank, E.; Minder, S. Characterization of a parabolic trough collector for process heat applications. *Energy Procedia* **2014**, *57*, 2804–2811.
14. Hafner, B.; Stoppok, O.; Zahler, C.; Berger, M.; Hennecke, K.; Krüger, D. Development of an integrated solar-fossil powered steam generation system for industrial applications. *Energy Procedia* **2014**, *48*, 1164–1172.
15. Fuller, R.J. Solar industrial process heating in Australia—Past and current status. *Renew. Energy* **2011**, *36*, 216–221.
16. Beath, A.C. Industrial energy usage in Australia and the potential for implementation of solar thermal heat and power. *Energy* **2012**, *43*, 261–272.
17. Lauterbach, C.; Schmitt, B.; Jordan, U.; Vajen, K. The potential of solar heat for industrial processes in Germany. *Renewable and Sustainable Energy Reviews* **2012**, *16*, 5121–5130.
18. Calderoni, M.; Aprile, M.; Moretta, S.; Aidonis, A.; Motta, M. Solar thermal plants for industrial process heat in Tunisia: Economic feasibility analysis and ideas for a new policy. *Energy Procedia* **2012**, *30*, 1390–1400.
19. Ramos, C.; Ramirez, R.; Beltran, J. Potential assessment in Mexico for solar process heat applications in food and textile industries. *Energy Procedia* **2014**, *49*, 1879–1884.
20. AEE INTEC. Database for applications of solar heat integration in industrial processes. 2016. Available online: <http://ship-plants.info/> (accessed on 15 March 2017).
21. Halabi, M.A.; Al-Qattan, A.; Al-Otaibi, A. Application of solar energy in the oil industry—Current status and future prospects. *Renew. Sustain. Energy Rev.* **2015**, *43*, 296–314.
22. Hassine, I.B.; Sehgelmeble, M.C.; Söll, R.; Pietruschka, D. Control optimization through simulations of large scale solar plants for industrial heat applications. *Energy Procedia* **2015**, *70*, 595–604.
23. Antonio Quijara, J.; González Alriols, M.; Labidi, J. Integration of a solar thermal system in canned fish factory. *Appl. Therm. Eng.* **2014**, *70*, 1062–1072.
24. Frey, P.; Fischer, S.; Drück, H.; Jakob, K. Monitoring results of a solar process heat system installed at a textile company in Southern Germany. *Energy Procedia* **2015**, *70*, 615–620.
25. Sharma, A.K.; Sharma, C.; Mullick, S.C.; Kandpal, T.C. Potential of solar energy utilization for process heating in paper industry in India: A preliminary assessment. *Energy Procedia* **2015**, *79*, 284–289.
26. Silva, R.; Cabrera, F.J.; Pérez-García, M. Process heat generation with parabolic trough collectors for a vegetables preservation industry in Southern Spain. *Energy Procedia* **2014**, *48*, 1210–1216.
27. Haagen, M.; Zahler, C.; Zimmermann, E.; Al-Najami, M.M.R. Solar process steam for pharmaceutical industry in Jordan. *Energy Procedia* **2015**, *70*, 621–625.
28. Abengoa. Available online: http://www.abengoasolar.com/web/en/plantas_solares/plantas_para_terceros/chile/index.html (accessed on 15 March 2017).
29. CSP Today. Available online: <http://es.csptoday.com/> (accessed on 24 October 2016).

30. Schoweiger, H.; Vannoni, C.; Oinedo, I.; Facci, E.; Baehrens, D.; Mozetic, L. *Evaluación de potencial de la energía solar térmica en el sector industrial. Estudio Técnico PER 2011–2020*; Institute for Energy Diversification and Saving (IDAE): Madrid, Spain, 2011. (Spanish)
31. Protermosolar and Deloitte. *Impacto macroeconómico del Sector Solar Termoeléctrico en España*; Protermosolar: Sevilla, Spain, 2010. (Spanish)
32. Energy Technology Systems Analysis Programme (IEA-ETSAP); International Renewable Energy Agency (IRENA). *Concentrating Solar Power Technology Brief*; IEA-ETSAP and IRENA Technology Brief E10; Publisher: City, Country, 2013; Volume 1, pp. 331–339.
33. Estec-Solar, 2016. Availableonline: <http://www.estec-solar.de/> (accessed on 12 September 2016).
34. Ferroli, 2016. Availableonline: <http://www.ferroli.es/zona-usuario/productos/Energia-Solar> (accessed on 12 September 2016).
35. Vaillant, 2016. Availableonline: <http://www.vaillant.es/usuarios/> (accessed on 12 September 2016).
36. Urtiaga, J.D.; Nevado, C.E.; Camacho, J.G.; Salvador, A.P. *Análisis de potencial y oportunidades de integración de energía solar térmica en redes de climatización. Energía solar de concentración en una red de calor y frío en Jaén*; Institute for Energy Diversification and Saving (IDAE): Madrid, Spain, 2015. (Spanish)
37. Silva, R.; Berenguel, M.; Pérez, M.; Fernández-García, A. Thermo-economic design optimization of parabolic trough solar plants for industrial process heat applications with memetic algorithms. *Appl. Energy* **2014**, *113*, 603–614.
38. Ma, Z.; Glatzmaier, G.; Turchi, C.; Wagner, M. Thermal energy storage performance metrics and use in thermal energy storage design. In Proceedings of the Colorado: ASES World Renewable Energy Forum Denver, Denver, CO, USA, 13–17 May 2012.
39. Lazzarin, R.M. Solar cooling: PV or thermal? A thermodynamic and economical analysis. *Int. J. Refrig.* **2014**, *39*, 38–47.
40. Zhu, G.; Wendelin, T.; Wagner, M.J.; Kutscher, C. History, current state, and future of linear Fresnel concentrating solar collectors. *Sol. Energy* **2014**, *103*, 639–652.
41. International Renewable Energy Agency (IRENA). *The Power to Change: Solar and Wind Cost Reduction Potential to 2025*; IRENA: Abu Dhabi, UAE, 2016; p. 112.
42. Morin, G.; Dersch, J.; Platzer, W.; Eck, M.; Häberle, A. Comparison of linear Fresnel and parabolic trough collector power plants. *Sol. Energy* **2012**, *86*, 1–12.
43. Konstatin, P. *Praxisbuch Energiewirtschaft: Energieumwandlung, Transport und -Beschaffung im Liberalisierten Markt*; Springer: Berlin, Germany, 2009. (German)
44. Petromercado. Availableonline: <http://petromercado.com/> (accessed on 24 October 2016).
45. Meteotest. Availableonline: <http://www.meteonorm.com/> (accessed on 13 September 2016).
46. *Análisis Comparativo de las Tarifas de Gas Natural en Argentina y Suramérica*; Centro de Estudios de la Regulación Económica de los Servicios Públicos: Buenos Aires, Argentina, 2016. (Spanish)
47. Aduana Argentina. Availableonline: <http://www.aduanaargentina.com/cm.php> (accessed on 26 October 2016).
48. Ministry of Energy and Mining of Argentina. Availableonline: <https://www.minem.gob.ar/> (accessed on 20 October 2016).



© 2017 by the authors. Licensee Preprints, Basel, Switzerland. This article is an open access article distributed under the terms and conditions of the Creative Commons by Attribution (CC-BY) license (<http://creativecommons.org/licenses/by/4.0/>).