

Article

High Biodiversity of Green Infrastructure Does Not Contribute to Recreational Ecosystem Services

Daria Sikorska^{1,*}, Piotr Sikorski² and Richard J. Hopkins³

¹ Faculty of Civil and Environmental Engineering, Warsaw University of Life Sciences – SGGW, Warszawa 02-787, Poland

² Faculty of Horticulture, Biotechnology and Landscape Architecture, Department of Environment Protection, Warsaw University of Life Sciences – SGGW, Warszawa 02-787, Poland; piotr_sikorski@sggw.pl

³ Natural Resources Institute, University of Greenwich, London SE10 9LS, UK; R.J.Hopkins@gre.ac.uk

* Correspondence: daria_sikorska@sggw.pl; Tel.: +48-690-679-106

Abstract: Urban lakes, especially those of natural origin, provide ecosystem services, recreation being one of the most important and highly valued by the city dwellers. Fulfilling the needs of city residents to relax and have contact with nature has become a priority in urbanized areas and has been proved to positively affect people's health and well-being. The recreational potential of water bodies was identified to be most important aspect of ecosystem services to the residents of the neighboring areas. An assessment of recreational ecosystem services (RES) provisioning to society based on the real time spent by the citizens and housing values in the rural-urban gradient revealed that the economic benefits of lakes differ in urbanized, suburban and rural landscapes. The growth of cities has led to an increased population density in the surroundings of ecologically valuable areas, resulting in higher pressure from visitors seeking recreational areas. Along with urbanization, the impoverishment of ecosystem functions takes place, limiting their capability to provide ecosystem services. In this work provisioning of recreational ecosystem services of 28 floodplain lakes located along the urban-rural gradient of the Warsaw agglomeration was assessed. The relationship between the ecological value of the water bodies, measured using naturalness indices, and the recreational ecosystem services they can provide was assessed. The results showed that the floodplain lakes located along the urban-rural gradient are of a great importance to the citizens due to their recreational potential. The provisioning of recreational ecosystem services is poorly connected with the ecological characteristics of the floodplain lakes. Only hemeroby, was significantly correlated with provisioning, and there was no relationship with factors such as naturalness of vegetation or water quality, demonstrating that public preference was not generally influenced by high ecological quality. These data should be available to potential buyers and be integrated in spatial planning management plans in order to shape future housing policy.

Keywords: ecosystem services; urban water; Warsaw; Poland; environment

1. Introduction

Parallel to the increasing population of cities worldwide and anxiety due to the life quality of residents, a general interest in potential and real benefits derived from the city's green infrastructure has arisen [1-9]. These benefits are classified as ecosystem services [10], the most important in urban areas being the cultural ES which are essential for the well-being and health of the citizens, [11-16], while being at the same time commonly underestimated due to difficulties in quantification [17]. Potential benefits from green infrastructure and the possibility of outdoor recreational activities are limited in many cities due to the low occurrence of good quality green space [18-19] and variations in people's preferences [20]. Studies on recreational ecosystem services (RES) have focused on recognizing components of habitats that people want to experience [21] or habitat components that could be enhanced to improve recreation [9, 22, 23]. In this paper we focus on RES associated with

urban lakes and their neighborhood, the majority being part of informal greenspaces, which are spaces not included in the city's spatial planning management plans [24, 25].

In contrast to other ecosystem services, it is important that green infrastructure can provide RES which are experienced by the users directly. The degradation of ecosystems which are part of the green infrastructure will lead to a real loss of the benefits people can derive, including the possibility of recreational activities [17, 26, 27]. The benefits from green infrastructure are revealed, for example, in the dependence of property values on the distance from green infrastructure [28-31]. Some results even indicate that the RES provided by components of the green infrastructure in cities can exceed those derived from most natural biotopes due to the direct and frequent use of these services by people, which equates to a higher demand [32].

Whilst management plans for green areas are unquestionably of benefit, and such plans are widely used for instance in the Netherlands [33], they are unfortunately absent in Warsaw, and indeed in much of Poland. Implementing an ecosystem services framework within such documents has become an increasingly popular tool used in the context of the sustainable management of natural resources, as a support for both ecosystem quality and human well-being, thus generating a comprehensive information base for policy makers in their decision making processes [34].

1.1. Does high biodiversity enhance provisioning of cultural ecosystem services?

It is generally accepted that high biodiversity increases the value of urban ecosystems and their neighboring areas [17], but this relationship is poorly investigated. The human perception of biodiversity is influenced by numerous variables such as age, sex or professional experience [35-37], attitude towards nature conservation or appreciation of rural landscapes [38-41] and general knowledge about the immediately surrounding nature [42]. City dwellers declare a desire for direct contact with nature, but at the same time seek areas which are easily accessible [42, 43]. The objects of the demand by residents, however, includes areas of various types, such as semi-natural areas, but even ecosystems associated with typical rural landscapes which provide peace and a sense of wilderness [17], but are not necessarily of a high absolute ecological value. Results indicating that the level of a particular biotope's naturalness induces the value of RES provided by these systems are hard to find. Based on Qiu et al. [42] one could conclude that the correlation between user preferences and biodiversity will not always be positive.

1.2. Actual and potential benefits from green infrastructure

Most RES assessments are based on estimating the flow of various benefits: ecological benefits, human health and well-being benefits, social and cultural benefits and marketed economic benefits [21, 32, 45, 46]. It is, however, assumed that the usage of resources by people is spatially evenly distributed [45]. Generalization at the regional scale might allow an assessment to reflect the real usage well, whilst at the scale of the city, where the population density varies [47], the assessment can be strongly biased and the RES will be unevenly distributed in space. Property values increase along the urban-rural gradient (the closer to the city centre, the more expensive) [48-51], and a similar pattern should be revealed as property nears RES provisioning of cities green infrastructure. While the benefits derived from potential ES resources of green infrastructure – such as CO₂ and noise reduction or a positive influence on microclimate affect all the citizens in the neighbourhood, benefits associated with recreation or choice of an aesthetic neighbourhood to live are subject to the general laws of demand and supply. When valuing those benefits it is crucial to differentiate between potential and real values. Benefits derived from green infrastructure of the same potential but located in different areas can have different real value.

The aim of this study was to answer the following research questions 1) How do the benefits derived from urban lakes, as reflected in property values and real time spent in green areas vary along the urban-rural gradient within the city? 2) Are the RES from urban lakes related to their biodiversity?

2. Materials and Methods

Urban lakes are a component of the city's green infrastructure which are highly valued by the citizens for the recreational opportunities they provide [54]. Due to their spatial distinctiveness from the surroundings they make a good object of study. In total 28 urban lakes were selected for this study. We chose a homogenous group of lakes in Warsaw, Poland. All the objects selected are floodplain lakes originating from the former Vistula riverbed. The Vistula in Warsaw was formerly a braided river, but after regulation and construction of embankments during the 19th and 20th centuries the channels were cut-off from the main river, forming elongated floodplain lakes permanently separated from Vistula river and subjected to strong urbanization pressure from the expansion of Warsaw [55]. The selected lakes are located along an urban-rural gradient up to 30 km from the city centre and are important elements of the green infrastructure of Warsaw (Fig. 1). All lakes are open to the public and play an important recreational function, although most lack permanent recreational infrastructure. The floodplain lakes studied are characterized by a high level of naturalness and act as refuges for rare plant taxa, such as *Salvinia natans*, *Wolffia arrhiza*, *Nymphaea alba* [56]. The habitats are subjected to a range of urbanization pressure, being surrounded by various land-use types such as built-up areas or different population densities in the neighborhood (Fig. 1). The vegetation of the lake shores is well developed, the banks are natural, with slopes < 30°.

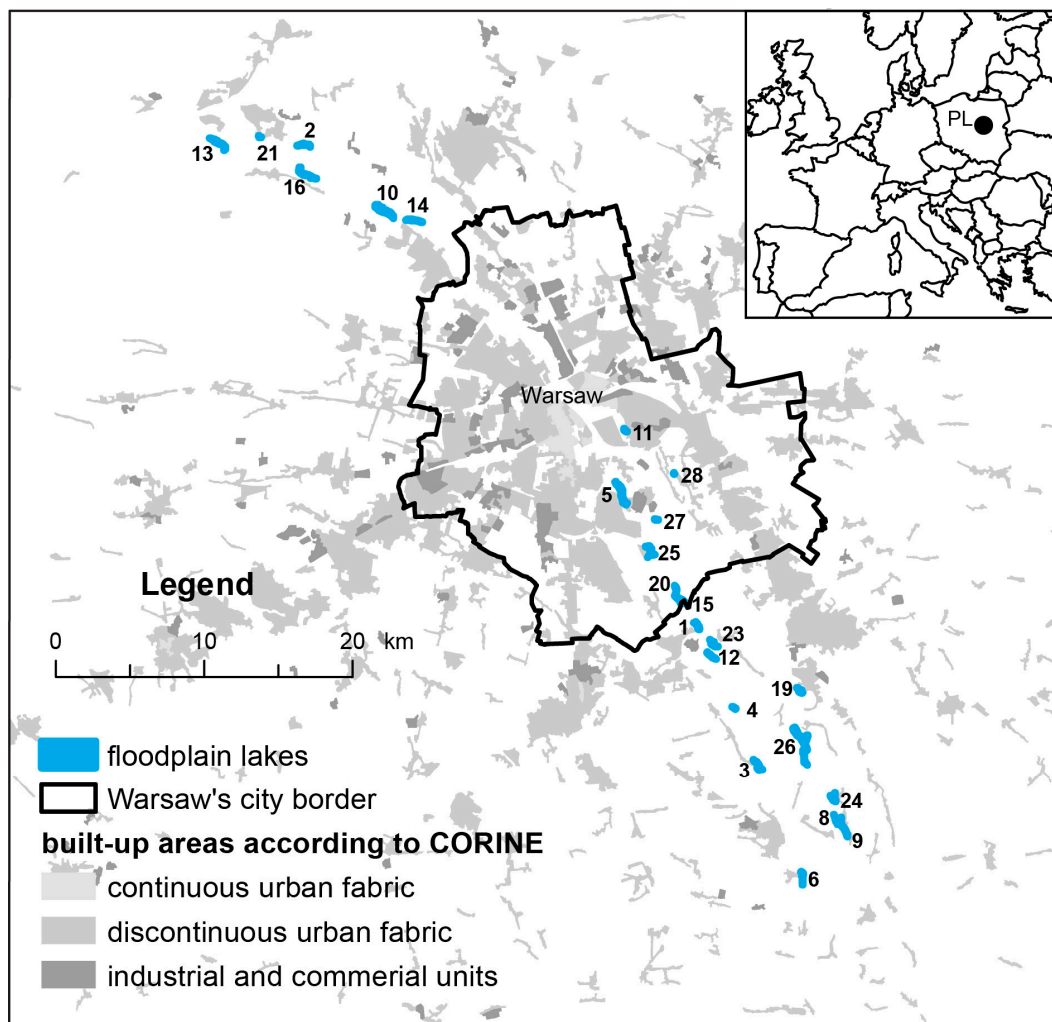


Figure 1. Location of investigated urban lakes and the strongly built-up areas of Warsaw according to Corine Land-Cover from year 2012, lake numbers according to table 1.

The benefits from urban lakes and their neighborhood which are provided to city residents were assessed on the basis of 1) housing value and 2) real time spent at the lakes by the inhabitants, which are commonly used and easy to apply indicators to estimate the value of nature associated with settlements [31].

- HOUSING VALUE - mean property transaction prices of housing in the primary and secondary market in Warsaw. Price of housing per m² was calculated according to <http://www.mapa.um.warszawa.pl/mapaApp1/mapa?service=rciwn> (synthetic map information about property values in the area in 2015 according to the city's registry). If no data were available we calculated medium market price in the area in 2015 using the portal <https://rynekpierwotny.pl>. (commercial website containing current advertisements on the primary market properties).

- REAL TIME SPENT IN NATURE - average people/day and hours spent/day per lake. The number of visitors to the lakes per day was recorded at all entrances of the examined area by researchers recording over three days in total during 2014 and 2015 for one day of weekend and two days of weekdays per lake in July and September, selected to be representative of high and low visitation days during the vegetative season [57]. Total time spent by the visitors during 3 days was averaged per day. The number of visitors during 2 combined weekdays is approximately 1/3 of the number of visitors during the weekend, which is supported by our observations taken in other areas, such as Vistula river Valley. The person recording was moving through a series of waypoints, using a GPS and was counting the number of visitors inside the 50 m buffer zone and recording the time spent by visitors with a hidden stopwatch. The routes of probable trespassing places, resting places and potential observation points were selected. People using public roads or bridges were excluded from the count.

The characteristics of the neighborhood which might benefit local residents were assessed based on a spatial analyses. To perform the spatial analysis, a 500 m buffer zone from the shore of each lake was used for a detailed vector land cover map on the basis of orthophotomaps, aerial images and verification in the field. Units distinguished included: built-up areas, other impermeable surfaces, agriculture, orchards, meadows and pastures, abandoned unmanaged areas, managed urban green areas, rushes, forests and woodlands. The urbanization gradient was expressed as a distance from the centre of the lake to the city centre [55].

The ecological value assessment of the lakes and their surroundings was based on a detailed vegetation survey in 2014 and 2015 and water quality sampling. All plant species and their abundance were recorded in representative transects in each of the lakes, in 2×2 m sample plots, separately in each vegetation zone – aquatic vegetation, rushes, and shore terrestrial vegetation (Fig. 2). The number of transects depended on the size of the lake, and was approximately every 100 m, but in case of more diverse vegetation was performed more frequently. 321 sample vegetation plots were collected in total. In summer 2014 water samples were collected from the centre of each lake (0.5m deep and 0.5m above the bottom) for quality assessment. In the case of a ditches connected to the lakes, additional samples were taken at the inflow and data was averaged. Eutrophication state was assessed on the basis of dissolved nutrients concentration. Dissolved nitrogen compounds: nitrite, nitrate and ammonium concentration in water samples was measured by ICS-1000 DIONEX Co ion chromatograph (Dionex Ltd, Camberley, UK) after samples filtering using PTFE filters (0.45 mikrone). Phosphate concentration was determined spectrophotometrically with ammonium molybdate blue method, according to norm PN-EN ISO 6878. Samples were filtered using cellulose mixed esters filters (0.45 mikrone). Chemical analyses were performed in the Laboratory - Water Centre of Warsaw University of Life Sciences.

Analyses of the urban lakes biodiversity included indices calculated separately for each lake. The ecological value of the lakes was expressed as the number of plant species taxa, Shannon-Wiener index of plant species [59], degree of naturalness was expressed by using hemeroby index share of plant species associated with humans [60], data was averaged from all transects for each lake. The relationships between RES expressed as property values and real time spend and ecological parameters concerning the lakes quality were calculated as Spearman's correlations at $p < 0.05$ using STATISTICA 10 software.



Figure. 2. Research area (dotted line) and vegetation sampling plots scheme within transects; white circles: a - aquatic vegetation, b - vegetation of the rushes, c - terrestrial vegetation of the shores. Signs based on Powsinkowskie Lake example.

3. Results

The investigated urban lakes along with their neighborhood occupy in total 180.7 ha (Table 1) and are an important component of the green infrastructure of Warsaw, where on average 837 people spend their leisure time daily (average value for the days measured at all 28 lakes), devoting in total 126.5 hours/day (Table 1)(total time in all the lakes). Taking into account how scattered the lake areas are, they nevertheless play a role as important as formal green areas of similar size. The mean value of analyzed property prices in the neighborhood of the lakes was 2485€ per m² (Table 1), a value similar to the average price of property outside the defined city centre (www.mapa.um.warszawa.pl/mapaApp1/mapa?service=rciwn). Distance to the city centre, and at the same time better access to workplaces and socio-cultural infrastructure, is revealed in the property prices of the neighbourhood of the lakes increasing significantly when approaching the city centre. However at the same time despite much higher population density in the city centre the total time spent by the citizens in these areas increases when moving away from the centre (Table 2).

No correlation between biodiversity (based on number of plant species in the aquatic zone, rushes, at the shores, hemeroby or Shannon-Wiener diversity index) and the property values in the neighborhood nor the duration of real time spent by the citizens at the urban lakes was found (Table 2). Only the terrestrial zone of the shores, adjacent to existing informal walking trails (which was most easily accessed by the visitors) was related to a high hemeroby index. The higher the naturalness of this zone the higher the property values and longer time spent by the users at the shores of the lake. In general no relationship was found between the water quality parameters and property values

nor leisure time duration. Only the hypertrophic water bodies, characterized by high NO₃ load were subjected to lower pressure from the visitors.

Table 1. Characteristics of investigated urban lakes and distance from centre, mean property value within 500 m buffer area, mean number of visitors, total time spent of people per day

No.	Lake name (ID)	Area [ha]	Lake perimeter [m]	X coordinates of the lake centroid (PUWG 1992)	Y coordinates of the lake centroid (PUWG 1992)	Distance from city centre [km]	Mean property value within 500 m buffer zone [€]	Mean number of visitors [people /day]	Total time spent of people per day [h]
1	Bielawa	6,1	1487	646648,21	473915,90	16,1	1327,2	35,2	5,25
2	Boża Wola	5,6	2250	620133,09	506266,20	25,3	1350,2	24,4	3,4
3	Brzeście	5,8	2748	650661,15	464613,40	26,5	1405,5	22,1	3,3
4	Ciecieszewskie	1,6	682	649102,31	468396,80	22,1	1390,6	26,2	3,6
5	Czerniakowskie	17,7	4096	641505,59	482874,00	6,7	1359,4	126	12,9
6	Czerskie	4,0	2049	653719,46	456946,40	34,2	1621,0	18,1	2,7
7	Kosumce	0,7	706	656008,69	460641,70	32,3	816,4	15,3	2,7
8	Dziecinów N	1,4	1222	655950,97	460908,40	32,1	816,4	11,6	1,65
9	Dziecinów S	6,8	2943	656491,89	460255,50	33,5	1277,2	8,1	1,2
10	Dzieskanowskie	26,5	4030	625488,97	501856,80	18,7	1084,1	48	7,2
11	Gocławskie	1,8	957	641756,84	487071,30	5,2	1716,6	80,2	12
12	Habdzin	3,9	1687	647538,26	471911,90	18,1	1621,0	20	3,5
13	Nowy Kazuń	14,4	3132	614401,37	506377,50	30,5	1371,0	18,3	2,7
14	Kiełpińskie	6,9	2400	627508,07	501195,00	17,4	1084,1	17,1	2,8
15	Lisowskie	7,4	2310	645454,90	475668,40	14,0	1621,0	38,7	5,7
16	Łomna E	3,2	1471	620663,38	504106,40	24,2	910,1	14,1	2,1
17	Łomna M	5,2	1438	620128,68	504304,60	24,3	910,1	19,2	2,85
18	Łomna W	2,8	810	619849,01	504630,10	25,1	910,1	18	2,7
19	Karczew	2,9	1878	653560,34	469533,60	24,8	816,4	42,4	6,3
20	Pod Morgami	2,3	1047	645189,90	476406,10	13,3	1954,8	31,2	4,4
21	Nowy Dwór	1,1	456	617152,18	506811,10	28,4	910,1	4	4,6
22	Opacz E	1,1	1189	647804,97	472562,50	18,4	1390,6	23,1	3,45
23	Opacz W	0,7	859	647579,48	472894,30	18,1	1390,6	25,1	3,75
24	Piotrowice	5,2	2120	655828,61	462257,20	31,7	816,4	25,3	3,2
25	Powsinkowskie	10,9	2720	643462,43	478953,30	10,4	1762,7	54,5	8,1
26	Otwockie	33,1	8007	653635,42	466188,90	27,5	816,4	61,1	5,15
27	Syta	1,3	627	643889,49	481052,70	9,2	1589,9	4,8	4,2
28	Żabie	0,3	279	645057,90	484160,70	9,1	1992,9	4,6	5,1
Mean							29,9	4,5	
Sum							836,7	126,5	

Table 2. Spearman's correlation coefficients between the ecological characteristics of investigated urban lakes and their surroundings and recreational ecosystem services provided by these ecosystems, expressed as mean property values in the neighborhood and real time spent by the citizens at the lakes at $p < 0.05$

	Property value in the 500 m buffer zone [€/m ²]		Duration of time spent by the users [hours/day]	
	<i>R square</i>	<i>p-value</i>	<i>R square</i>	<i>p-value</i>
<i>Distance from centre</i>	-0,430*	0,023	-0,720**	0,000
<i>Land use in the 500 m buffer zone</i>				
<i>Built-up areas [%]</i>	0,468*	0,012	0,498**	0,007
<i>Managed green areas [%]</i>	0,282	0,147	0,489**	0,008
<i>Abandoned unmanaged areas [%]</i>	0,179	0,362	0,564**	0,002
<i>Impermeable surfaces [%]</i>	0,270	0,164	0,542**	0,003
<i>Rushes and wetlands [%]</i>	0,042	0,834	0,032	0,872
<i>Forests and woodlands [%]</i>	-0,330	0,090	0,069	0,729
<i>Aquatic vegetation (zone a)</i>				
<i>Number of species</i>	0,290	0,135	-0,040	0,838
<i>Shannon-Wiener Index</i>	0,278	0,152	-0,110	0,583
<i>Hemeroby</i>	0,085	0,667	0,139	0,481
<i>Vegetation of the rushes (zone b)</i>				
<i>Number of species</i>	-0,350	0,072	-0,400	0,036
<i>Shannon-Wiener Index</i>	-0,200	0,317	-0,210	0,277
<i>Hemeroby</i>	-0,170	0,391	-0,180	0,37
<i>Vegetation of the shores (zone c)</i>				
<i>Number of species</i>	-0,260	0,187	0,107	0,588
<i>Shannon-Wiener Index</i>	-0,420	0,026	0,163	0,409
<i>Hemeroby</i>	-0,420*	0,026*	-0,390*	0,040*
<i>Water quality parameters</i>				
<i>P-PO₄³⁻</i>	0,035	0,861	-0,220	0,260
<i>N-NO₂</i>	0,234	0,230	0,149	0,449
<i>N-NO₃</i>	-0,030	0,880	-0,380*	0,046
<i>N-NH₄</i>	-0,140	0,475	-0,040	0,854

4. Discussion

The results of this study indicate that the general value and quality of the ecosystems examined do not correspond to the visiting frequencies or duration of the public. However, some clear relationships were found showing that the value of properties are in general higher in the close vicinity of floodplain lakes considered in the analysis.

Well selected representative sampling areas can supply examples of a positive relationship between the biodiversity of urban green spaces and the preferences of individuals visiting them [61, 62]. In reality the users do not necessarily prefer places characterized by unique biological diversity. They do recognize most common types of ecosystems, which can indirectly indicate biodiversity, but in many cases this recognition depends strongly on the general education level and knowledge about nature of the individual [42, 63, 64]. For the homogenous habitats, the measured ecological indices reflecting diversity of these ecosystems and the landscape associated with them were not correlated at all to the benefits perceived by the public. Thus, basing the management and maintenance of city green infrastructure on social judgment and preferences may be misguided. Moreover, this research on urban lakes indicated that if the habitats are less accessible the users will base their judgments on the accessible zone only.

The naturalness of these urban lakes is not perceived in terms of the number of species or vegetation diversity but as a share of plant species associated with humans. The time spent by the user at the

lakes is negatively correlated with the hemeroby of the vegetation occurring on the lakes edges, but no such relationship was observed with aquatic vegetation and rushes at all. The quality of the areas visited is known to be assessed on the basis of the most accessible zones [42].

The urban-rural gradient should be one of the aspects the RES of green infrastructure management and planning should follow. The distribution of benefits from RES should include demand and other social considerations [The extremities of the lakes were commonly overgrown with invasive plant species such as *Solidago canadensis* and *S. gigantea*, though in such cases the aquatic vegetation and the rushes did not necessarily reveal low floristical richness and diversity – invasive species in one zone did not contribute to biodiversity loss of other zones. The explanation for the lower interest by the visitors should rather be sought in the monotony of views regarded as lacking in diversity [42]), rather than through lower diversity or the presence of invasive species. Invasive species may be perceived by the public in a neutral or even positive way [65]), and it must be accepted that people may not know that a plant is invasive and may judge it on aesthetic rather than biological grounds.66]. Psychological studies highlight that direct contact with nature is crucial for human well-being and psycho-physical development in a long term perspective. It is even accepted that the presence of green areas affects life expectancy [11, 13, 14, 16]. Thus, green infrastructure can become the infrastructure of a healthy life, and is most needed in the city centres, densely built-up areas or highly populated areas. In such places the demand for RES is the highest, and over half of the green infrastructure users are people seeking direct contact with nature [43]. The possibilities to develop and expand formal green areas, such as forests or natural urban parks close to the city centres are usually spatially limited. Thus, integrating informal green spaces, such as urban lakes and their neighboring unmanaged areas into existing green infrastructure can provide high benefits to both nature [67] and city dwellers [25]. The higher the share of such areas the higher the real possibilities of recreation provided (Table 2). In the neighborhood surrounding the floodplain lakes in this study, which are Warsaw's most valuable natural ecosystems, on average 9.5 people/ha per day utilized the space, which are values similar to those obtained for urban parks. Areas at the city's lakes are quite frequently visited – on average 837 people visit the urban lakes studied each day, but spent little over 9 minutes per visit, indicating that they were highly transient. Comparing these values to those obtained for one of the most attractive big urban parks of Warsaw, the latter is visited by far less people per day, but the people spend much more time there, with the majority of visits exceeding 1 hour [68].

The difference between property market value and the perception of a neighborhood by the inhabitants can be complex. A certain dissonance between the effect of the neighborhood on property prices and the perception of the surroundings after already inhabiting the area by the citizens can be observed. When choosing a place to live, the parameters exhibiting high RES of the surroundings (share of managed green areas, share of unmanaged abandoned areas, share of impermeable surfaces) which can be treated as a general measure of available infrastructure in the area are not taken into account. These factors do, however, play a significant role to the local community actually using the space (Table 2). This difference in perception of the surroundings by the citizens is enhanced by the lack of the spatial planning documents that would promote high provisioning of RES for the housing estates and further influenced by the low ecological awareness of the citizens. These differences result undoubtedly to some extent from the fact that the group actually visiting the informal green areas, such as urban lakes is rather small – less than 30% of citizens [25], which can affect the perception of biodiversity [63, 64]. These results can be also influenced by the fact that the average number of apartments per 1000 inhabitants is much lower than the average for other EU countries [69]. This tendency has been changing drastically lately. Only a couple of years ago purchase of an apartment was most influenced by the building interior (56%), low rent (48%) or safety (33%), now they tend to become less important [66]. During recent years the number of citizens declaring will to live in a neighborhood characterized by abundant green areas has increased from 12 to 27% [70]. The indications from this study are that the quality of the green area *per se* is of little importance, as long as the green area exists.

Taking into account that psychological studies reveal that the benefits from a vital natural infrastructure in a neighborhood are only revealed after many years – we should conclude that multiple data about RES from residential areas and their surrounding should be collected. This is of particular importance in a high density urban environment such as Warsaw, where general anxiety and protests due to too poor information provision to the citizens on nature conservation issues are common [71]. Collecting such data, and making it easily accessed by the community, is a best practice in many EU countries [33]. Green infrastructure systems require constant verification due to insufficient recognition of RES, together with changing social conditions, property prices, and changes in land use. Multidisciplinary research, new methods and frameworks followed by on-site investigations are required to assess RES in urban areas and provide adequate management and planning strategies to optimize RES for the urban community [72]. Our findings show that the lack of sufficient information prior the purchase of property can lead to a conflict once the buyers become the users of the green spaces – the housing prices are not related to the characteristics of the green infrastructure while the time spent there by visitors is. These data should be available to potential buyers and be integrated in spatial planning management plans in order to shape housing policy.

Acceptance of biodiversity by those using urban green areas is simplified down to plants forms – the more diversified, the better perceived, which in reality does not overlap with the naturalness of an environment [42]. This is true for both indigenous vegetation and invasive species [65]. Our research shows that the perception of the quality of green areas by those using them is much simplified (Table 2). This justifies the need to use simple measures in spatial planning parameters of green areas ratio, which are commonly applied in Warsaw as well as in other cities [73, 74]. However, our study shows the share of green areas within the examined objects does not contribute directly to property values (Table 2). This is contradictory to many other studies [31, 75-77]. and this may be an effect of the research areas used in other studies exhibiting greater heterogeneity in than the relatively homogeneous components of the Vistula lakes, which were all formed by the same change in management of the river. Making information on green areas fully accessible to the public could change the perception and ecological awareness of green infrastructure users [65, 78]. In the long term, the promotion of and education about green areas to residents, can form the basis for an increase in their use, with associated benefits for the health and well-being of the individual city dwellers.

Acknowledgments: The authors would like to thank Prof. Tomasz Okruszko and Mateusz Grygoruk, PhD for critically reviewing the manuscript and for their kind suggestions and Agnieszka Bańkowska, PhD for her valuable help in the laboratory measurements.

Author Contributions: Sikorska D. conceived and designed the experiments, Sikorska D., Sikorski P. performed the experiments; Sikorski P. Hopkins R.J. - analyzed the data, all authors participated in writing the manuscript.

References

1. Benedict, M.A.; McMahon, E.T. *Green Infrastructure Linking Landscapes and Communities*. Island Press Washington, Covelo, London, **2006**.
2. Tzoulas, K.; Korpela, K.; Venn, S.; Yli-Pelkonen, V.; Kazmierczak, A.; Niemela, J.; James, P. Promoting Ecosystem and Human Health in Urban Areas using Green Infrastructure: a Literature Review. *Landsc. Urban Plan.* **2007**, *81*, 167–178.
3. Breuste, J.; Niemela, J.; Snep, R.P.H. Applying Landscape Ecological Principles in Urban Environments. *Landsc. Ecol.* **2008**, *23*, 1139–1142.
4. Vandermeulen, V.; Verspecht, A.; Vermeire, B.; Van Huylenbroeck, G.; Gellynck X., 2011. The Use of Economic Valuation to Create Public Support for Green Infrastructure Investments in Urban Areas. *Landsc. Urban Plan.* **2011**, *103*, 198–206.
5. Gómez-Baggethun, E.; Barton, D.N. Classifying and Valuing Ecosystem Services for Urban Planning. *Ecol. Econ.* **2013**, *86*, 235–245.
6. Schäffler, A.; Swilling, M. Valuing Green Infrastructure in an Urban Environment under Pressure – The Johannesburg Case. *Ecol. Econ.* **2013**, *86*, 246–257.

7. Netusil, N.R.; Levin, Z.; Shandas, V.; Hart, T. Valuing Green Infrastructure in Portland, Oregon. *Landsc. Urban Plan.* **2014**, *124*, 14–21.
8. Breuste, J.; Rahimi, A. Many Public Urban Parks, but Who Profits from Them? The Example of Tabriz, Iran. *Ecological Processes* **2015**, *4*, 1–15.
9. Richards, D.R.; Warren, P.H.; Moggridge, H.L.; Maltby, L. Spatial Variation in the Impact of Dragonflies and Debris on Recreational Ecosystem Services in a Floodplain Wetland. *Ecosystem Serv.* **2015**, *15*, 113–121.
10. MEA, *Ecosystems and Human Well-Being: Synthesis*. Island Press, Washington DC. **2005**.
11. Suding, K.N. Toward and Area of Restoration in Ecology: Successes, Failures and Opportunities ahead. *Annu. Rev. Ecol. Evol. Syst.* **2011**, *42*, 465–487.
12. Lachowycz, K.; Jones, A.P. Towards a Better Understanding of the Relationship Between Greenspace and Health: Development of a Theoretical Framework. *Landsc. Urban Plan.* **2013**, *118*, 62–69.
13. White, M.P.; Alcock, I.; Wheeler, B.W.; Depledge, M.H. Would you be happier living in a greener urban area? A Fixed-effects Analysis of Panel Data. *Psychological Science* **2013**, *24*, 920–928.
14. Alcock, I.; White, M.P.; Wheeler, B.W.; Fleming, L.E.; Depledge, M.H. Longitudinal Effects on Mental Health of Moving to Greener and Less Green Urban Areas. *Environ. Sci. Technol.* **2014**, *48*, 1247–1255.
15. Gascon, M.; Triguero-Mas, M.; Martínez, D. Residential Green Spaces and Mortality: A Systematic Review. *Environ. Intern.* **2016**, *86*, 60–67.
16. Gascon, M.; Triguero-Mas, M.; Martinez, D.; Dadvand, P.; Fors, J.; Plasencia, A. Mental Health Benefits of Long-term Exposure to Residential Green and Blue Spaces: A Systematic Review. *Int. J. Environ. Res. Public Health* **2015**, *12*, 4354–4379.
17. Fitter, A.; Elmqvist, T.; Haines-Young, R.; Potschin, M.; Rinaldo, A.; Setälä, H.; Stoll-Kleemann, S.; Zobel, M.; Murlis, J. An Assessment of Ecosystem Services and Biodiversity in Europe. *Environ. Sci. Technol.* **2010**, *30*, 1–28.
18. Bolund, P.; Hunhammar, S. Ecosystem Services in Urban Areas. *Ecol. Econ.* **1999**, *29*, 293–301.
19. Daniel, T.C.; Muhar, A.; Arnberger, A.; Aznar, O.; Boyd, J.W.; Chan, K.M.A. Contributions of Cultural Services to the Ecosystem Services Agenda. *Proc. Natl. Acad. Sci.* **2012**, *109*, 8812–8819.
20. Cord, A.F.; Roeßiger, F.; Schwarz, N. Geocaching Data as an Indicator for Recreational Ecosystem Services in Urban Areas: Exploring Spatial Gradients, Preferences and Motivations. *Landsc. Urban Plan.* **2015**, *144*, 151–162.
21. Westerberg, V.H.; Lifran, R.; Olsen, S.B. To Restore or Not? A Valuation of Social and Ecological Functions of the Marais des Baux wetland in Southern France. *Ecol. Econ.* **2010**, *69*, 2383–2393.
22. Bullock, C.H.; Elston, D.A.; Chalmers, N.A. An Application of Economic Choice Experiments to a Traditional Land Use—Deer Hunting and Landscape Change in the Scottish Highlands. *J. Environ. Manage.* **1998**, *52*, 335–351.
23. Smyth, R.L.; Watzin, M.C.; Manning, R.E. Investigating Public Preferences for Managing Lake Champlain Using a Choice Experiment. *J. Environ. Manage.* **2009**, *90*, 615–623.
24. Rupprecht, C.D.D.; Byrne, J.A. Informal Urban Greenspace: A Typology and Trilingual Systematic Review of its Role for Urban Residents and Trends in the Literature. *Urban For. Urban Greening* **2014**, *13*, 597–611.
25. Rupprecht, C.D.D.; Byrne, J.A.; Uedac, H.; Lo, A.Y. 'It's Real, not Fake Like a Park': Residents' Perception and Use of Informal Urban Green-space in Brisbane, Australia and Sapporo, Japan. *Landsc. Urban Plan.* **2015**, *143*, 205–218.
26. Costanza, R.; d'Arge, R.; de Groot, R.; Farber, S.; Grasso, M.; Hannon, B.; Limburg, K.; Naeem, S.; O'Neill, R.V.; Paruelo, J.; Raskin, R.G.; Sutton, P.; van den Belt, M. The Value of the World's Ecosystem Services and Natural Capital. *Nature* **1997**, *387*, 253–260.
27. Riechers, M.; Barkmann, J.; Tscharnkte, T. Perceptions of Cultural Ecosystem Services from Urban Green. *Ecosystem Serv.* **2016**, *17*, 33–39.
28. Tyrväinen, L. The Amenity Value of the Urban Forest: an Application of the Hedonic Pricing Method. *Landsc. Urban Plan.* **1997**, *37*, 211–222.
29. Benson, E.D.; Hansen, J.L.; Schwartz, A.L.; Smersh, G.T. Pricing Residential Amenities: The Value of a View. *J. R. Estate. Finance. Econ.* **1998**, *16*, 55–73.
30. Moranco, A.B. A Hedonic Valuation of Urban Green Areas. *Landsc. Urban Plan.* **2003**, *66*, 35–41.

31. Jim, C.Y.; Chen, W.Y. External Effects of Neighborhood Parks and Landscape Elements on High-rise Residential Value. *Land Use Policy* **2010**, *27*, 662–670.
32. Sutton, P.C.; Anderson, S.J. Holistic Valuation of Urban Ecosystem Services in New York City's Central Park. *Ecosystem Serv.* **2016**, *19*, 87–91.
33. Mabelis, A.A.; Maksymiuk, G. Public Participation in Green Urban Policy: Two Strategies Compared. *Int. J. Biodivers. Sci. Manage.* **2009**, *5*, 63–75.
34. Turner, R.K.; Paavola, J.; Cooper, P.; Farber, S.; Jessamy, V.; Georgiou, S. Valuing Nature: Lessons Learned and Future Research Directions. *Ecol. Econ.* **2003**, *46*, 493–510.
35. Lyons, E. Demographic Correlates of Landscape Preference. *Environ. Behav.* **1983**, *15*, 487–511.
36. Strumse, E. Demographic Differences in the Visual Preferences for Agrarian Landscapes in Western Norway. *J. Environ. Psychol.* **1996**, *16*, 17–31.
37. Dramstad W.E.; Tveit M.S.; Fjellstad W.J.; Fry G.L.A. Relationships Between Visual Landscape Preferences and Map-based Indicators of Landscape Structure. *Landsc. Urban Plan.* **2006**, *78*, 465–474.
38. Kaltenborn, B.P.; Bjerke, T. Associations Between Environmental Value Orientations and Landscape Preferences. *Landsc. Urban Plan.* **2002**, *59*, 1–11.
39. van der Berg, A.E.; Koole, S.L. New Wilderness in the Netherlands: An Investigation of Visual Preferences for Nature Development Landscapes. *Landsc. Urban Plan.* **2006**, *78*, 362–372.
40. Stilma, E.S.C.; Smit, A.B.; Geerling-Eiff, F.A.; Struik, P.C.; Vosman, B.; Korevaar, H. Perception of Biodiversity in Arable Production Systems in the Netherlands. *NJAS—Wageningen J. Life Sci.* **2009**, *56*, 391–404.
41. Grygoruk, M.; Rannow, S. Mind the Gap! Lessons from Science-based Stakeholder Dialogue in Climate-adapted Management of Wetlands. *J. Env. Man.* **2017**, *186*, 108–119.
42. Qiu, L.; Lindberg S.; Nielsen A.B. Is Biodiversity Attractive? - On-site Perception of Recreational and Biodiversity Values in Urban Green Space. *Landsc. Urban Plan.* **2013**, *119*, 136–146.
43. Chiesura, A. The Role of Urban Parks for the Sustainable City. *Landsc. Urban Plan.* **2004**, *68*, 129–138.
44. Faizi, M. The Role of Urban Parks in a Metropolitan City. *Environ. Sci.* **2006**, *12*, 29–34.
45. Rasmussen, L.V.; Mertz, O.; Christensen, A.E.; Danielsen, F.; Dawson, N.; Xaydongvanh, P. A Combination of Methods Needed to Assess the Actual Use of Provisioning Ecosystem Services. *Ecosystem Serv.* **2016**, *17*, 75–86.
46. Beier, C.M.; Caputo, J.; Lawrence, G.B.; Sullivan, T.J. Loss of Ecosystem Services due to Chronic Pollution of Forests and Surface Waters in the Adirondack Region (USA). *J. Env. Man.* **2017**, *191*, 19–27.
47. Bertaud, A.; Malpezzi, S. *The Spatial Distribution of Population in 48 World Cities: Implications for Economies in Transition*, Research working paper, University of Wisconsin, Center for Urban Economics, **2003**.
48. Thrane, C. Examining the Determinants of Room Rates for Hotels in Capital Cities: The Oslo Experience. *J. Revenue Pricing Manag.* **2006**, *5*, 315–323.
49. Andersson, D.E. Hotel Attributes and Hedonic Prices: An Analysis of Internet-based Transactions in Singapore's Market for Hotel Rooms. *Ann. Reg. Sci.* **2010**, *44*, 229–240.
50. Chen, C.; Rothschild, R. An Application of Hedonic Pricing Analysis to the Case of Hotel Rooms in Taipei. *Tour. Econ.* **2010**, *16*, 685–694.
51. Schamel, G. Weekend vs. Midweek Stays: Modelling Hotel Room Rates in a Small Market. *Int. J. Hosp. Manage.* **2012**, *31*, 1113–1118.
52. Balaguer, J.; Pernias, J.C. Relationship between Spatial Agglomeration and Hotel Prices: Evidence from Business and Tourism Consumers. *Tour. Manage.* **2013**, *36*, 391–400.
53. Becerra, M.; Santaló, J.; Silva, R. Being Better vs. Being Different: Differentiation, Competition, and Pricing Strategies in the Spanish Hotel Industry. *Tour. Manage.* **2013**, *34*, 71–79.
54. Mansor, M.; Said, I.; Mohamad, I. Experiential Contacts with Green Infrastructure's Diversity and Well-being of Urban Community. *Procedia Soc. Behav. Sci.* **2012**, *49*, 257–267.
55. Sudnik-Wójcikowska, B.; Galera, H. *Warsaw* [in:] Kelcey, J.G., Müller, N. [ed.]. *Plants and Habitats in European Cities*. Springer, New York, **2011**, 499–545.
56. Sikorska, D. *The Former Vistula River Beds Near Warsaw: Vegetational Diversity and Change*. Doctoral thesis. Warsaw University of Life Science, Warsaw, **2014**. 1–130. (In Polish)
57. Arnberger, A.; Brandenburg, C. *Visitor Structure of a Heavily Used Conservation Area: The Danube Floodplains National Park, Lower Austria*. 2002. Available online:

http://mmv.boku.ac.at/refbase/files/arnberger_arne_bra-2002-visitor_structure_of.pdf (accessed on 20.12.2016).

58. Hahs, A.K.; McDonnell, M.J. Selecting Independent Measures to Quantify Melbourne's Urban-rural Gradient. *Landsc. Urban Plan.* **2006**, *78*, 435–448.
59. Magurran, A.E. *Measuring Biological Diversity*. Oxford: Wiley & SONS, **2004**.
60. Fanelli, G.; Tescarollo, P.; Testi, A. Ecological Indicators Applied to Urban and Suburban Floras. *Ecol. Indic.* **2006**, *6*, 444–457.
61. Fuller, R.A.; Irvine, K.N.; Devine-Wright, P.; Warren, P.H.; Gaston, K.J. Psychological Benefits of Greenspace Increase with Biodiversity. *Biol. Lett.* **2007**, *3*, 390–394.
62. Carrus, G.; Scopelliti, M.; Laforteza, R.; Colangelo, G.; Ferrini, F.; Salbitano, F.; Sanesi, G. Go Greener, Feel Better? The Positive Effects of Biodiversity on the Well-being of Individuals Visiting Urban and Peri-urban Green areas. *Landsc. Urban Plan.* **2015**, *134*, 221–228.
63. Lin, B.B.; Fuller, R.A.; Bush, R.; Gaston, K.J.; Shanahan, D.F. Opportunity or Orientation? Who Uses Urban Parks and Why. *PloONE* **2014**, *9*(1), e87422 DOI: 10.1371/journal.pone.0087422
64. Murateta, A.; Pellegrini P.; Dufourc, A.B.; Arrif, T.; Chiron, F. Perception and Knowledge of Plant Diversity among Urban Park Users. *Landsc. Urban Plan.* **2015**, *137*, 95–106.
65. Lindemann-Matthies, P. Beasts or Beauties? Laypersons' Perception of Invasive Alien Plant Species in Switzerland and Attitudes Towards their Management. *NeoBiota* **2016**, *29*, 15–33.
66. Hand, K.L.; Freeman, C.; Seddon, P.J.; Stein, A.; van Heezik, Y. A Novel Method for Fine-scale Biodiversity Assessment and Prediction across Diverse Urban Landscapes Reveals Social Deprivation-related Inequalities in Private, not Public Spaces. *Landsc. Urban Plan.* **2016**, *151*, 33–44.
67. Kowarik, I. Novel Urban Ecosystems, Biodiversity, and Conservation. *Environ. Pollut.* **2011**, *159*, 1974–1983.
68. Cieszevska, A.; Kowalczyk, M.; Szumacher, I. *Skaryszewski Park Users in Years 2009-2015*, [in:] J. Romanowski [ed.] *Skaryszewski Park in Warsaw – Nature and Use*, UKSW Press, Warszawa, **2015**, 37–48. (In Polish)
69. Pittini, A.; Ghekière, L.; Dijol, J.; Kiss, I. Housing in Europe, the European Federation for Public, Cooperative and Social Housing Brussels. **2015**. Available online: <http://www.housingeurope.eu/file/306/download> (accessed on 20.12.2016).
70. Pankowski, K. How do Poles Live, or How They Would Like to be Living. Fundacja Centrum Badania Opinii Społecznej. 2010. Available online: www.cbos.pl/spiskom.pol/2010/k_120_10.PDF (accessed on 20.12.2016). (In Polish)
71. Pawłowska, K. Public Participation in Decision Making on Urban Nature. 2012. Available online: http://www.sendzimir.org.pl/images/zrz_3_en/03_public_participation_in_decision_making_on_urban_nature.pdf (accessed on 20.12.2016).
72. Wang, Y.F.; Bakker, F.; de Groot, R.; Wortche H. Effect of Ecosystem Services Provided by Urban Green Infrastructure on Indoor Environment: a Literature Review. *Build. Environ.* **2014**, *77*, 88–100.
73. Keeley, M. The Green Area Ratio: an Urban Site Sustainability Metric. *J. Env. Plann. Manage.* **2011**, *54*, 937–958.
74. Szulczewska, B.; Giedych, R.; Borowski, J.; Kuchcik, M.; Sikorski, P.; Mazurkiewicz, A.; Stańczyk, T. How much is Needed for a Vital Neighbourhood? *Land Use Policy* **2014**, *38*, 330–345.
75. Lutzenhiser, M.; Netusil, N.R. The Effect of Open Spaces on a Home's Sale Price. *Contemp. Econ. Policy* **2001**, *19*, 291–298.
76. Geoghegan, J. The Value of Open Spaces in Residential Land Use. *Land Use Policy* **2002**, *19*, 91–98.
77. Thorsnes, P. The Value of a Suburban Forest Preserve: Estimates from Sales of Vacant Residential Building Lots. *Land Econ.* **2002**, *78*, 426–441.
78. Helfand, G.E.; Park, J.S.; Nassauer, J.I.; Kosek, S. The Economics of Native Plants in Residential Landscape Designs. *Landsc. Urban Plan.* **2006**, *78*, 229–240.

