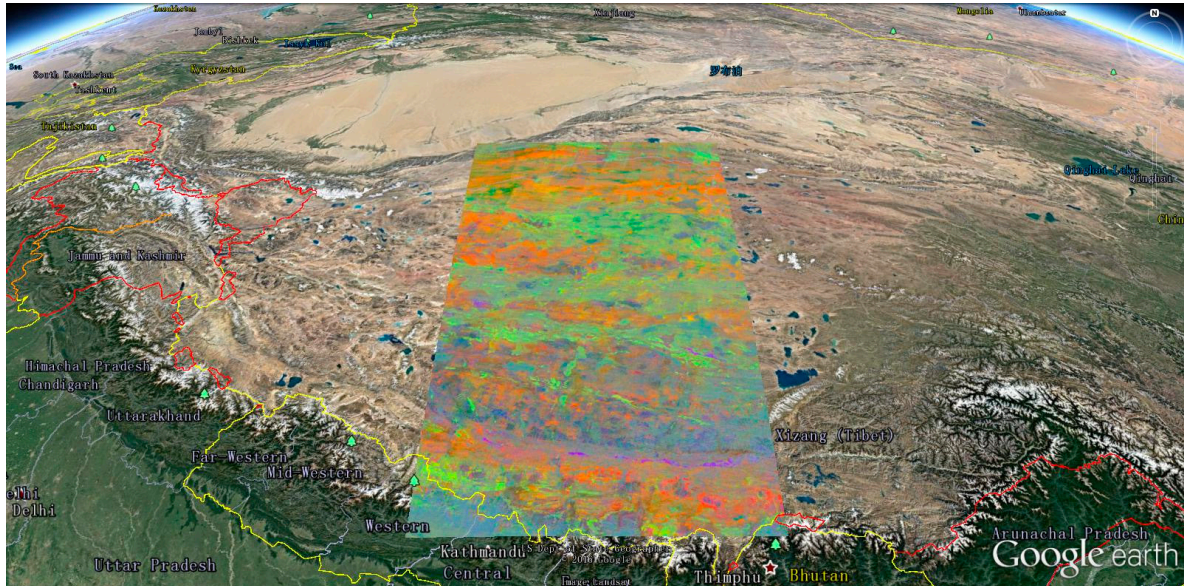


# Supplementary Materials: Regional Lithological Mapping Using ASTER-TIR Data: Preliminary Case Study for the Tibetan Plateau and the Surrounding Area



**Figure S1:** Mosaic color composite image of QI, CI and MI with a linear contrast stretch of 0.97-1.055 (QI; Red), 1.005-1.055 (CI; Green) and 0.79-0.95 (MI; Blue), produced with ASTER Level-3A products covering the entire study area. The pixel is re-sampled every 9 seconds, and the image is compressed with jpeg format. This file is converted from Figure 4 without annotations.



**Figure S2:** Mosaic color composite image of QI, CI and MI with a linear contrast stretch of 0.97-1.055 (QI; Red), 1.005-1.055 (CI; Green) and 0.79-0.95 (MI; Blue), produced with ASTER Level-3A products covering the north western part of Mt. Everest bounded by latitude 28° to 29° North and longitude 86° to 87° East. The pixel is re-sampled every 3 seconds, and the image is not compressed. This file is converted from Figure 7 (c)