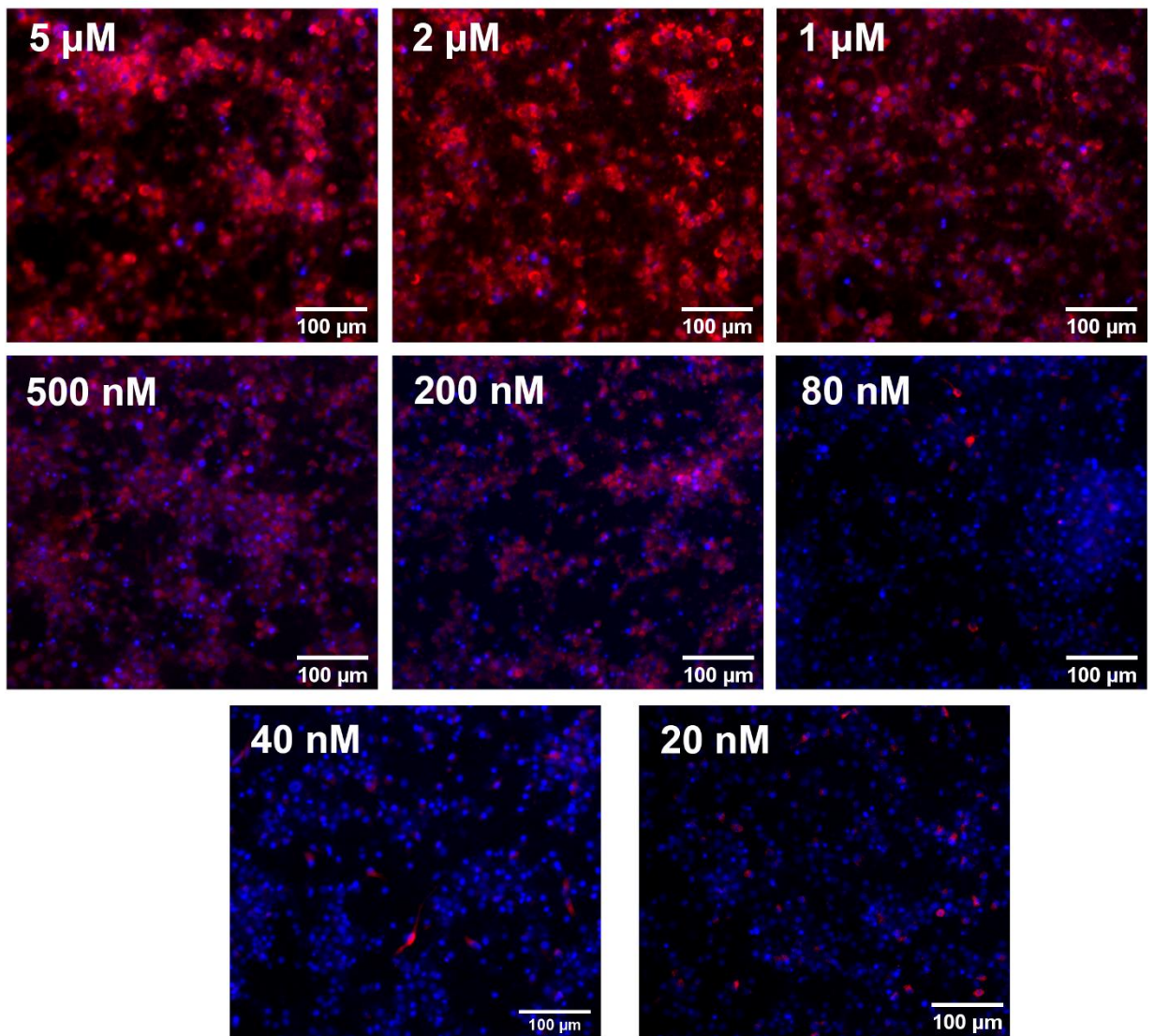
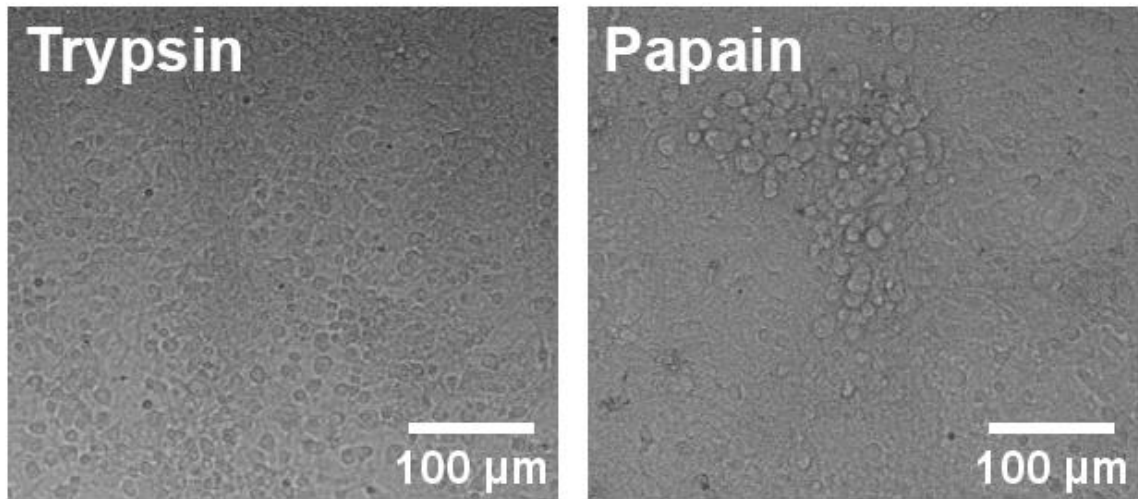


**Figure S1.** Staining of 2 DIV rat hippocampal TRY-cultures with antibodies against GFAP and Iba1.

### Hoechst 33342 + CDr20 Microglia Stain



**Figure S2.** Staining of 7 DIV TRY-cultures with different concentrations of Lumi Cell CDr20 microglia stain. The nuclei were stained with Hoechst 33342 (5 μg/mL).



**Figure S3.** Transmitted light images of 7 DIV TRY- and PAP-cultures grown in the presence of TGF $\beta$ +MCSF+cholesterol.