

Article

Not peer-reviewed version

Momentum Conservation in a Charged Retarded Field Engine

[Prachi Sharma](#) and [Asher Yahalom](#) *

Posted Date: 22 April 2026

doi: 10.20944/preprints202410.2252.v3

Keywords: Newton's third law; electromagnetism; retardation; conservation of momentum



Preprints.org is a free multidisciplinary platform providing preprint service that is dedicated to making early versions of research outputs permanently available and citable. Preprints posted at Preprints.org appear in Web of Science, Crossref, Google Scholar, Scilit, Europe PMC.

Copyright: This open access article is published under a [Creative Commons CC BY 4.0 license](#), which permit the free download, distribution, and reuse, provided that the author and preprint are cited in any reuse.

Disclaimer/Publisher's Note: The statements, opinions, and data contained in all publications are solely those of the individual author(s) and contributor(s) and not of MDPI and/or the editor(s). MDPI and/or the editor(s) disclaim responsibility for any injury to people or property resulting from any ideas, methods, instructions, or products referred to in the content.

Article

Momentum Conservation in a Charged Retarded Field Engine

Prachi Sharma ¹  and Asher Yahalom ^{1,2,*} 

¹ Ariel University, Faculty of Engineering, Department of Electrical & Electronic Engineering, Ariel 40700, Israel

² Center for Astrophysics, Geophysics, and Space Sciences (AGASS), Ariel University, Ariel 40700, Israel

* Correspondence: asya@ariel.ac.il; Tel. +972-54-7740294

Abstract

Linear momentum conservation, rooted in the spatial invariance of physical laws and formalized by Noether's theorem, requires that systems with spatial translational symmetry conserve linear momentum. This work examines how this principle applies to a charged retarded field engine, where the rate of change of total mechanical linear momentum and field linear momentum is balanced. Using electric and magnetic field expressions from a Taylor expansion to incorporate retardation effects, we analyze the linear momentum equation order by order for two arbitrary charged bodies. Our results show that total linear momentum is conserved, with mechanical and field linear momentum changes exactly balanced. Consequently, the linear momentum lost by the internal electromagnetic field precisely equals the engine's gained mechanical linear momentum, addressing the central focus of this study.

Keywords: Newton's third law; electromagnetism; retardation; conservation of momentum

1. Introduction

The foundation of modern science was established by Newton's laws of motion [1,2]. These rules explain how motion reacts to acting forces and how those forces relate to one another [1,2]. In his 1687 publication *Philosophiæ Naturalis Principia Mathematica*, Isaac Newton formulated three fundamental rules [1–3]. Here we deal with the third law only which state: When a body applies force to another, the second body reciprocally applies a force of equal magnitude but opposite direction onto the first body. As per Newton's third law, in a system unaffected by external forces, the total force sum is zero [1]. This principle has undergone numerous experimental validations and stands as a fundamental pillar of physics [2,3]. However, due to the finite speed of signal propagation, it is evident from the theory of relativity (but also prior to that from Maxwell's equations of the fields) that an action and its reaction cannot be formed simultaneously [4]. In accordance with the theory of relativity, it is postulated that no object, message, signal (regardless of its nature, even if non-electromagnetic), or field can exceed the speed of light in a vacuum [5,6]. As a result, the forces cannot add up to zero [5]. However, as Griffiths & Heald [7] pointed out, retardation can be disregarded in the quasi-static approximation.

The majority of contemporary engines operate on the principle that two material components acquire momentum, one of which is equal to and opposite from the momentum acquired by the other (for example a rocket that propels itself by ejecting matter) [2]. Nevertheless, retardation effects indicate a novel motor design where the system doesn't consist of two material bodies, but rather a material body in conjunction with a field [8]. In [8] we thoroughly elucidated the concept of a charged retarded field engine, delving into its significance for space exploration [9,10]. A charged retarded field engine is a type of propulsion system where the motion of the center of mass is achieved through the interaction between its internal components, which may either move relative to one another or remain fixed within a rigid structure [8]. The focus is primarily on the movement of the center of mass,

which can occur in all directions, including vertical motion [8]. Unlike traditional engines, a charged retarded field engine doesn't have moving mechanical parts or rely on conventional fuel, thereby eliminating the need for fuel combustion and reducing carbon emissions [8]. It operates by harnessing electromagnetic energy, such as from solar panels, making it especially advantageous for space travel, where large amounts of fuel storage are typically required [8]. This approach offers a cleaner, more efficient way to power spacecraft [10].

Yet some scholars claim that such device cannot exist as it does not respect conservation of linear momentum, it is especially those scholars for which the current paper is written [8]. In a nutshell, linear momentum is conserved in such a device if one takes both mechanical linear momentum and electromagnetic linear momentum into account [8].

Griffiths and Heald [11] noted that the laws of Coulomb and Biot-Savart govern the configurations of electric and magnetic fields exclusively for stationary sources. Time-dependent extensions of these laws, as outlined by [12], were employed to explore the validity of Coulomb and Biot-Savart formulas beyond static conditions.

In an earlier work, the author addressed the force between two current-carrying coils [13] using Jefimenko's [4,12] equation. Later on, this was extended to encompass the relationship between a permanent magnet and a current-carrying loop [14]. The earlier calculations have showed the expressions for mechanical momentum and field momentum when dealing with macroscopically neutral bodies and verified the conservation of momentum [15]. However, in the case of charged retarded field engine, momentum conservation was still a question [15]. Energy conservation in an uncharged retarded motor was also discussed [16].

The case of a charged retarded motor was discussed in [8] but without discussing in detail the problem of momentum conservation.

In the present work, we have calculated the field's momentum when electromagnetic fields are time dependent and compared with the mechanical momentum of the same system which comprises of two arbitrary charged bodies [8]. The main result of this work is that the field momentum for a two charged body system is equal and opposite to the mechanical momentum gained by the material components [8]. This result is not new, as it was already pointed out by a few authors [17–21] studying the conservation of mechanical linear momentum in electromagnetic systems. In particular Feynman [6] describes two orthogonally moving charges, apparently contradicting Newton's third law, as the forces that the charges induce do not cancel (last part of 26-2); this is resolved in 27-6 in which it is noticed that the momentum gained by the two-charge system is lost to the field. However, here we derive a general expression for field momentum that is applicable to any charge density and current density and not just point particles and prove mathematically that the total linear momentum of matter and field is indeed conserved, we underline that previous papers on the subject do not cover our results [8]. This is a consequence of the non linearity of the electromagnetic linear momentum which is proportional to the integral of the vector multiplication of the electric and magnetic fields [4]. This result can be applied also to quantum systems [22].

The scientific novelty of the solution obtained is in demonstrating that a charged retarded field engine conserves linear momentum. Thus the momentum obtained by the field is equal and opposite to the linear mechanical momentum obtained by the engine. Showing this is the purpose of our scientific research. Detailed structure of the article including the presentation of solved problems in the following sections are as follows: First we define the general formalism of electromagnetism in four dimensional notation, then we partition space and time and obtain the momentum conservation equation in standard notation. Then the system is separated to two subsystems and we calculate the relation between the mechanical momentum and the field momentum which result from the interaction of the two subsystems. In the next section we show by explicit calculation up to the relevant order that the interaction field momentum is indeed equal in magnitude and opposite in sign to the mechanical momentum thus the sum of the two is always null. This is followed by a concluding section.

2. Electromagnetic Field Momentum

The field equations of electromagnetism can be written in a four dimensional form (MKS units) [4]:

$$\partial^\beta F_{\alpha\beta} = \mu_0 J_\alpha, \quad (1)$$

where Greek letters take the values: 0, 1, 2, 3, $F_{\alpha\beta}$ is the field tensor, J_α is the four current, $\mu_0 = 4\pi \cdot 10^{-7}$ H/m is the magnetic permeability of free space, and $\partial^\beta \equiv \frac{\partial}{\partial x_\beta}$. The Einstein summation convention is implied and so is the standard notation of lowering and raising indices using the Lorentz metric:

$$g = \begin{pmatrix} +1 & 0 & 0 & 0 \\ 0 & -1 & 0 & 0 \\ 0 & 0 & -1 & 0 \\ 0 & 0 & 0 & -1 \end{pmatrix}. \quad (2)$$

The above matrix is its own inverse: $g = g^{-1}$ and thus in index notation it follows that $g_{\alpha\beta} = g^{\alpha\beta}$. Equation (1) can be derived from a four dimensional action principle:

$$\mathcal{A} = \int \mathcal{L} d^4x, \quad \mathcal{L} = -\frac{1}{4\mu_0} F_{\alpha\beta} F^{\alpha\beta} - J_\alpha A^\alpha, \quad (3)$$

in the above A^α is the four potential, and:

$$F^{\alpha\beta} = g^{\alpha\eta} g^{\beta\lambda} F_{\eta\lambda}. \quad (4)$$

The field tensor and four potential are related according to:

$$F_{\alpha\beta} = \partial_\alpha A_\beta - \partial_\beta A_\alpha \quad (5)$$

The above action is symmetric with respect to the Poincaré group and in particular symmetric to coordinate translation which leads to conserved currents given in terms of the symmetric energy momentum tensor:

$$\Theta^{\alpha\beta} = \frac{1}{\mu_0} \left(F_\lambda^\alpha F^{\lambda\beta} - \frac{1}{4} g^{\alpha\beta} F_{\mu\lambda} F^{\mu\lambda} \right), \quad F_\lambda^\alpha = g^{\alpha\eta} F_{\eta\lambda}. \quad (6)$$

Taking only the spatial Noether current we obtain the field linear momentum:

$$\vec{P}_{fieldi} = \int \Theta^{0i} d^3x, \quad (7)$$

Latin indices take the values: 1, 2, 3. If the matter action is also considered one must add to \vec{P}_{fieldi} the matter Noether current \vec{P}_{mechi} which corresponds to the matter linear momentum. In what follows we discuss the conservation of linear momentum which corresponds to the equation in terms of the standard formalism for which space and time are separated:

$$\frac{d\vec{P}_{mechi}}{dt} + \frac{d\vec{P}_{fieldi}}{dt} = \oint_S T_{ij} \hat{n}_j da \quad (8)$$

In the above, \vec{P}_{mechi} represents the i -th component of the mechanical momentum within the system, while \vec{P}_{fieldi} denotes the i -th component of the field momentum. T_{ij} stands for the Maxwell stress tensor. S denotes a closed surface that encloses the volume where the system is situated, with \hat{n} representing a unit vector perpendicular to the surface. Additionally, the notation assumes Einstein's summation

convention. T_{ij} , Maxwell stress tensor can be calculated from the electric \vec{E} and magnetic \vec{B} fields as follows:

$$T_{ij} = \epsilon_0 \left[E_i E_j + c^2 B_i B_j - \frac{1}{2} (\vec{E}^2 + c^2 \vec{B}^2) \delta_{ij} \right]. \quad (9)$$

Here, $\epsilon_0 = 8.85 \times 10^{-12} \text{ Fm}^{-1}$ is the vacuum permittivity, $c = \frac{1}{\sqrt{\epsilon_0 \mu_0}}$ is the velocity of light in vacuum and δ_{ij} is Kronecker's delta. E_i and E_j denotes the i th and j th components respectively of the electric field \vec{E} , B_i and B_j denotes the i th and j th components respectively of the magnetic field \vec{B} .

The field linear momentum is defined to be:

$$\vec{P}_{field} \equiv \epsilon_0 \int \vec{E} \times \vec{B} d^3x. \quad (10)$$

3. System Partition

Suppose we have a distribution of charge and current densities denoted by ρ and \vec{j} respectively, those are determined by the relevant equations of motion. It is well known that in such a case we will have by virtue of Maxwell equations the following expressions for the electric and magnetic field evaluated at the location \vec{x} at time t [4,12]:

$$\begin{aligned} \vec{E}(\vec{x}, t) = k \int \frac{1}{R^2} \left[\left(\rho(\vec{x}', t_{ret}) + \left(\frac{R}{c} \right) \partial_t \rho(\vec{x}', t_{ret}) \right) \hat{R} + \left(\frac{R}{c} \right)^2 \frac{\partial_t \vec{j}(\vec{x}', t_{ret})}{R} \right] d^3x', \\ \vec{R} \equiv \vec{x} - \vec{x}', \quad R \equiv |\vec{R}|, \quad \hat{R} \equiv \frac{\vec{R}}{R}, \quad t_{ret} \equiv t - \frac{R}{c}, \quad \partial_t \equiv \frac{\partial}{\partial t}. \end{aligned} \quad (11)$$

And:

$$\vec{B}(\vec{x}, t) = \frac{\mu_0}{4\pi} \int \left[\left(\vec{j}(\vec{x}', t_{ret}) + \left(\frac{R}{c} \right) \partial_t \vec{j}(\vec{x}', t_{ret}) \right) \times \frac{\hat{R}}{R^2} \right] d^3x'. \quad (12)$$

Here $k = \frac{1}{4\pi\epsilon_0} \simeq 9 \times 10^9 \text{ N m}^2/\text{C}^2$, charge and current densities are evaluated at \vec{x}' .

Let us partition the above system arbitrarily into two subsystems such that:

$$\rho = \rho_1 + \rho_2 \quad (13)$$

$$\vec{j} = \vec{j}_1 + \vec{j}_2. \quad (14)$$

From the linearity of equation (11) and equation (12) it follows that:

$$\vec{E} = \vec{E}_1 + \vec{E}_2, \quad \vec{B} = \vec{B}_1 + \vec{B}_2 \quad (15)$$

Such that:

$$\vec{E}_1(\vec{x}, t) = k \int \frac{1}{R^2} \left[\left(\rho_1(\vec{x}', t_{ret}) + \left(\frac{R}{c} \right) \partial_t \rho_1(\vec{x}', t_{ret}) \right) \hat{R} + \left(\frac{R}{c} \right)^2 \frac{\partial_t \vec{j}_1(\vec{x}', t_{ret})}{R} \right] d^3x', \quad (16)$$

$$\vec{E}_2(\vec{x}, t) = k \int \frac{1}{R^2} \left[\left(\rho_2(\vec{x}', t_{ret}) + \left(\frac{R}{c} \right) \partial_t \rho_2(\vec{x}', t_{ret}) \right) \hat{R} + \left(\frac{R}{c} \right)^2 \frac{\partial_t \vec{j}_2(\vec{x}', t_{ret})}{R} \right] d^3x', \quad (17)$$

and:

$$\vec{B}_1(\vec{x}, t) = \frac{\mu_0}{4\pi} \int \left[\left(\vec{j}_1(\vec{x}', t_{ret}) + \left(\frac{R}{c} \right) \partial_t \vec{j}_1(\vec{x}', t_{ret}) \right) \times \frac{\hat{R}}{R^2} \right] d^3x', \quad (18)$$

$$\vec{B}_2(\vec{x}, t) = \frac{\mu_0}{4\pi} \int \left[\left(\vec{j}_2(\vec{x}', t_{ret}) + \left(\frac{R}{c} \right) \partial_t \vec{j}_2(\vec{x}', t_{ret}) \right) \times \frac{\hat{R}}{R^2} \right] d^3x'. \quad (19)$$

It is obvious that the electric field \vec{E}_1 and magnetic field \vec{B}_1 solve Maxwell equations for the charge density ρ_1 and current density \vec{J}_1 and hence all theorems related to solutions of those equations hold. In particular equation (8) holds, taking the form:

$$\frac{dP_{mech\ 1\ i}}{dt} + \frac{dP_{field\ 1\ i}}{dt} = \oint_S T_{1\ ij} \hat{n}_j da. \quad (20)$$

Similarly it is obvious that the electric field \vec{E}_2 and magnetic field \vec{B}_2 solve Maxwell equations for the charge density ρ_2 and current density \vec{J}_2 and hence all theorems related to solutions of those equations hold. In particular equation (8) holds, taking the form:

$$\frac{dP_{mech\ 2\ i}}{dt} + \frac{dP_{field\ 2\ i}}{dt} = \oint_S T_{2\ ij} \hat{n}_j da. \quad (21)$$

As both equation (10) governing field momenta and equation (9) describing the Maxwell stress tensor are quadratic in the fields, the following outcome is attained:

$$\begin{aligned} \vec{P}_{field} &= \epsilon_0 \int \vec{E} \times \vec{B} d^3x = \vec{P}_{field\ 1} + \vec{P}_{field\ 2} + \vec{P}_{field\ 12} + \vec{P}_{field\ 21} \\ \vec{P}_{field\ 1} &\equiv \epsilon_0 \int \vec{E}_1 \times \vec{B}_1 d^3x \\ \vec{P}_{field\ 2} &\equiv \epsilon_0 \int \vec{E}_2 \times \vec{B}_2 d^3x \\ \vec{P}_{field\ 12} &\equiv \epsilon_0 \int \vec{E}_1 \times \vec{B}_2 d^3x \\ \vec{P}_{field\ 21} &\equiv \epsilon_0 \int \vec{E}_2 \times \vec{B}_1 d^3x \end{aligned} \quad (22)$$

$$\begin{aligned} T_{ij} &\equiv \epsilon_0 \left[E_i E_j + c^2 B_i B_j - \frac{1}{2} (\vec{E}^2 + c^2 \vec{B}^2) \delta_{ij} \right] \\ &= T_{1\ ij} + T_{2\ ij} + 2T_{12\ ij} \\ T_{1\ ij} &\equiv \epsilon_0 \left[E_{1\ i} E_{1\ j} + c^2 B_{1\ i} B_{1\ j} - \frac{1}{2} (\vec{E}_1^2 + c^2 \vec{B}_1^2) \delta_{ij} \right] \\ T_{2\ ij} &\equiv \epsilon_0 \left[E_{2\ i} E_{2\ j} + c^2 B_{2\ i} B_{2\ j} - \frac{1}{2} (\vec{E}_2^2 + c^2 \vec{B}_2^2) \delta_{ij} \right] \\ T_{12\ ij} &\equiv \epsilon_0 \left[E_{1\ i} E_{2\ j} + c^2 B_{1\ i} B_{2\ j} - \frac{1}{2} (\vec{E}_1 \cdot \vec{E}_2 + c^2 \vec{B}_1 \cdot \vec{B}_2) \delta_{ij} \right] \end{aligned} \quad (23)$$

What exactly do $\vec{P}_{field\ 12}$ and $\vec{P}_{field\ 21}$ describe in terms of the Poynting vector between systems 1 and 2? Obviously they describe a fundamental property of the quadratic (and therefore nonlinear) nature of the field linear momentum. It is precisely this property that arise from Maxwell equations that allow distant systems to convert electromagnetic linear momentum into mechanical linear momentum and vice versa (as will be shown in the following paragraphs). If the total field momentum was additive than this transformation could not occur which means that "retardation" could not have produced mechanical linear momentum without violating the conservation of total linear momentum.

The temporal derivative of the mechanical linear momentum is given by Newton's second law in terms of the total Lorentz force (see equation (6.114) in [4]):

$$\frac{d\vec{P}_{mech}}{dt} = \int (\rho \vec{E} + \vec{J} \times \vec{B}) d^3x \quad (24)$$

Thus if the derivative of the linear momentum in subsystem 1 is dependent on the fields generated in that subsystem affecting only charge and current densities of subsystem 1:

$$\frac{d\vec{P}_{mech\ 1}}{dt} = \int (\rho_1 \vec{E}_1 + \vec{J}_1 \times \vec{B}_1) d^3x \quad (25)$$

and similarly in subsystem 2 we obtain:

$$\frac{d\vec{P}_{mech\ 2}}{dt} = \int (\rho_2 \vec{E}_2 + \vec{J}_2 \times \vec{B}_2) d^3x \quad (26)$$

Then we may define:

$$\frac{d\vec{P}_{mech\ 12}}{dt} = \int (\rho_1 \vec{E}_2 + \vec{J}_1 \times \vec{B}_2) d^3x \quad (27)$$

$$\frac{d\vec{P}_{mech\ 21}}{dt} = \int (\rho_2 \vec{E}_1 + \vec{J}_2 \times \vec{B}_1) d^3x \quad (28)$$

From which it follows that the mechanical linear momentum can be partitioned in the following form:

$$\vec{P}_{mech} = \vec{P}_{mech\ 1} + \vec{P}_{mech\ 2} + \vec{P}_{mech\ 12} + \vec{P}_{mech\ 21} \quad (29)$$

Now Subtracting the expressions given in equation (20) and equation (21) from equation (8):

$$\begin{aligned} & \frac{d(P_{mech\ i} - P_{mech\ 1\ i} - P_{mech\ 2\ i})}{dt} + \frac{d(P_{field\ i} - P_{field\ 1\ i} - P_{field\ 2\ i})}{dt} \\ &= \oint_S (T_{ij} - T_{1\ ij} - T_{2\ ij}) \hat{n}_j da, \end{aligned} \quad (30)$$

now with the help of equation (22), equation (29) and equation (23) we obtain:

$$\begin{aligned} & \frac{d(P_{mech\ 12\ i} + P_{mech\ 21\ i})}{dt} + \frac{d(P_{field\ 12\ i} + P_{field\ 21\ i})}{dt} \\ &= 2 \oint_S T_{12\ ij} \hat{n}_j da \end{aligned} \quad (31)$$

It is well known that analytic expressions for both the electric and magnetic fields [4,12] (see also equation (11) and equation (12) above) contain terms which reduce as $\frac{1}{R^2}$ and terms which reduce as $\frac{1}{R}$, the later are proportion to at least $\frac{1}{c}$ (and higher powers of $\frac{1}{c}$). Now the surface area grows as R^2 , thus the surface integral will converge at large distances to $R^2 \frac{1}{R^4} = \frac{1}{R^2} \rightarrow 0$ for any square of $\frac{1}{R^2}$ terms. For mixed terms of the $\frac{1}{R^2}$ and $\frac{1}{R}$ type it will converge at large distances to $R^2 \frac{1}{R^3} = \frac{1}{R} \rightarrow 0$. Thus at infinity we will be left with a multiplication of $\frac{1}{R}$ terms which must be proportion to $\frac{1}{c^2}$ and thus will be neglected in the current approximation. Therefore:

$$\frac{d(\vec{P}_{mech\ 12} + \vec{P}_{mech\ 21} + \vec{P}_{field\ 12} + \vec{P}_{field\ 21})}{dt} \simeq 0 \quad (32)$$

Hence provided that there is no field or mechanical momenta at $t = 0$ we arrive at the result:

$$\vec{P}_{mech\ 12} + \vec{P}_{mech\ 21} \simeq -\vec{P}_{field\ 12} - \vec{P}_{field\ 21}. \quad (33)$$

Next, we use the **assumption** that the mechanical momentum produced within each subsystem is insignificant compared to the mechanical momentum generated in one subsystem as a result of the fields produced in the other subsystem, and vice versa. Consequently, the self-generated mechanical momenta are negligible (the specific conditions for this are discussed in appendix A), yielding with the help of equation (29):

$$\vec{P}_{mech} \simeq -\vec{P}_{field\ 12} - \vec{P}_{field\ 21}. \quad (34)$$

4. Retarded Field Momentum of Two Subsystems

Consider two bodies having volume elements d^3x_1, d^3x_2 located at \vec{x}_1, \vec{x}_2 , having charge densities ρ_1, ρ_2 and current densities \vec{J}_1, \vec{J}_2 respectively. Now, We will calculate the integral:

$$\vec{P}_{field12} \equiv \epsilon_0 \int \vec{E}_1 \times \vec{B}_2 d^3x. \quad (35)$$

We prove the following theorem:

Theorem

In a charged retarded field engine the interaction electromagnetic linear momentum is equal in size and opposite in direction to the mechanical linear momentum to the lowest order in $\frac{1}{c}$.

Proof

The expressions for electric field and magnetic field in the case of charged retarded motor is given by [4,12]:

$$\begin{aligned} \vec{E}_1(\vec{x}, t) = k \int \frac{1}{R_1^2} \left[\left(\rho_1(\vec{x}_1, t_{ret1}) + \left(\frac{R_1}{c} \right) \partial_t \rho_1(\vec{x}_1, t_{ret1}) \right) \hat{R}_1 \right. \\ \left. + \left(\frac{R_1}{c} \right)^2 \frac{\partial_t \vec{J}_1(\vec{x}_1, t_{ret1})}{R_1} \right] d^3x_1, \quad t_{ret1} \equiv t - \frac{R_1}{c}. \end{aligned} \quad (36)$$

And

$$\vec{B}_2(\vec{x}, t) = \frac{\mu_0}{4\pi} \int \left[\left(\vec{J}_2(\vec{x}_2, t_{ret2}) + \left(\frac{R_2}{c} \right) \partial_t \vec{J}_2(\vec{x}_2, t_{ret2}) \right) \times \frac{\hat{R}_2}{R_2} \right] d^3x_2, \quad t_{ret2} \equiv t - \frac{R_2}{c}. \quad (37)$$

Here $\vec{R}_1 = \vec{x} - \vec{x}_1$ and $\vec{R}_2 = \vec{x} - \vec{x}_2$. So, substituting equation (36) and equation (37) in equation (35), we obtain:

$$\begin{aligned} \vec{P}_{field12} = -\frac{\mu_0}{16\pi^2} \int \left[\left(\int \frac{1}{R_1^2} \left(\left(\rho_1(\vec{x}_1, t_{ret1}) + \left(\frac{R_1}{c} \right) \partial_t \rho_1(\vec{x}_1, t_{ret1}) \right) \hat{R}_1 \right. \right. \right. \\ \left. \left. + \left(\frac{R_1}{c} \right)^2 \frac{\partial_t \vec{J}_1(\vec{x}_1, t_{ret1})}{R_1} \right) d^3x_1 \right) \right. \\ \left. \times \left(\int \frac{\hat{R}_2}{R_2} \times \left(\vec{J}_2(\vec{x}_2, t_{ret2}) + \left(\frac{R_2}{c} \right) \partial_t \vec{J}_2(\vec{x}_2, t_{ret2}) \right) d^3x_2 \right) \right] d^3x. \end{aligned} \quad (38)$$

We may now introduce for any system a typical length L and time τ , we shall assume that $\epsilon \equiv \frac{L}{c\tau} \ll 1$. In terms of L we may introduce dimensionless coordinates and dimensionless time:

$$\vec{x}' \equiv \frac{\vec{x}}{L}, \quad \vec{x}'_1 \equiv \frac{\vec{x}_1}{L}, \quad \vec{x}'_2 \equiv \frac{\vec{x}_2}{L}, \quad \vec{R}'_1 \equiv \frac{\vec{R}_1}{L}, \quad \vec{R}'_2 \equiv \frac{\vec{R}_2}{L}, \quad t' \equiv \frac{t}{\tau}. \quad (39)$$

It follows that:

$$t'_{ret1} \equiv \frac{t_{ret1}}{\tau} = t' - \epsilon R'_1, \quad t'_{ret2} \equiv \frac{t_{ret2}}{\tau} = t' - \epsilon R'_2. \quad (40)$$

Similarly we can define dimensionless charge and current densities which can be thought as functions of dimensionless spatial and temporal coordinates.

$$\rho'_1 \equiv \frac{L^3}{Q_1} \rho_1, \quad \rho'_2 \equiv \frac{L^3}{Q_2} \rho_2, \quad \vec{J}'_1 \equiv \frac{L^2\tau}{Q_1} \vec{J}_1, \quad \vec{J}'_2 \equiv \frac{L^2\tau}{Q_2} \vec{J}_2. \quad (41)$$

Thus we may rewrite equation (38) in terms of dimensionless quantities:

$$\vec{P}_{field12} = -\frac{\mu_0 Q_1 Q_2}{16\pi^2 \tau} \int \left[\left(\int \frac{1}{R_1'^2} \left(\rho_1'(\vec{x}_1', t_{ret1}') + \epsilon R_1' \partial_t' \rho_1'(\vec{x}_1', t_{ret1}') \right) \hat{R}_1' \right. \right. \\ \left. \left. + \epsilon^2 R_1'^2 \frac{\partial_t' \vec{j}_1'(\vec{x}_1', t_{ret1}')}{R_1'} \right) d^3 x_1' \right] \times \left(\int \frac{\hat{R}_2'}{R_2'^2} \times \left(\vec{j}_2'(\vec{x}_2', t_{ret2}') + \epsilon R_2' \partial_t' \vec{j}_2'(\vec{x}_2', t_{ret2}') \right) d^3 x_2' \right) d^3 x'. \quad (42)$$

Neglecting all terms proportional to ϵ and consequently approximating any retarded quantity X such that $X'(\vec{x}', t_{ret}') \simeq X'(\vec{x}', t')$ we obtain:

$$\vec{P}_{field12} \simeq -\frac{\mu_0}{16\pi^2} \int \left[\int \int \left(\rho_1 \frac{\hat{R}_1}{R_1^2} \times \left(\frac{\hat{R}_2}{R_2^2} \times \vec{j}_2 \right) \right) d^3 x_1 d^3 x_2 \right] d^3 x, \quad (43)$$

in which we reinstated dimensional quantities. Using the vector identity:

$$\vec{A} \times (\vec{B} \times \vec{C}) = \vec{B}(\vec{A} \cdot \vec{C}) - (\vec{A} \cdot \vec{B})\vec{C}, \quad (44)$$

we may write:

$$\vec{P}_{field12} \simeq -\frac{\mu_0}{16\pi^2} \int \left[\int \int \left(\frac{\hat{R}_2}{R_2^2} \left(\rho_1 \frac{\hat{R}_1}{R_1^2} \cdot \vec{j}_2 \right) - \frac{\rho_1}{R_1^2 R_2^2} (\hat{R}_1 \cdot \hat{R}_2) \vec{j}_2 \right) d^3 x_1 d^3 x_2 \right] d^3 x. \quad (45)$$

Thus we may write the l component of the electromagnetic momentum in the Einstein summation convention in the form:

$$P_{field12l} \simeq -\frac{\mu_0}{16\pi^2} \int \int \rho_1 \left[\left(\int \frac{\hat{R}_{2l}}{R_2^2} \frac{\hat{R}_{1k}}{R_1^2} d^3 x \right) J_{2k} \right. \\ \left. - \left(\int \frac{\hat{R}_1 \cdot \hat{R}_2}{R_1^2 R_2^2} d^3 x \right) J_{2l} \right] d^3 x_1 d^3 x_2. \quad (46)$$

Now using the identities:

$$\frac{\hat{R}_1}{R_1^2} = \vec{\nabla} \left(\frac{1}{R_1} \right), \quad \frac{\hat{R}_1}{R_1^2} = -\vec{\nabla}_{\vec{x}_1} \left(\frac{1}{R_1} \right) \quad (47)$$

$$\frac{\hat{R}_2}{R_2^2} = \vec{\nabla} \left(\frac{1}{R_2} \right), \quad \frac{\hat{R}_2}{R_2^2} = -\vec{\nabla}_{\vec{x}_2} \left(\frac{1}{R_2} \right) \quad (48)$$

We may write:

$$I_{kl} \equiv \int \frac{\hat{R}_{2l}}{R_2^2} \frac{\hat{R}_{1k}}{R_1^2} d^3 x = -\partial_{2l} \left(\int \frac{1}{R_2} \partial_k \frac{1}{R_1} d^3 x \right). \quad (49)$$

Next we introduce the identity (the derivation is not given here but can be found in [15]):

$$\vec{G}(\vec{x}_1, \vec{x}_2) \equiv \int \frac{1}{R_1} \vec{\nabla} \frac{1}{R_2} d^3 x = -2\pi \hat{R}', \quad (50)$$

in which:

$$\vec{R}' \equiv \vec{x}_1 - \vec{x}_2, \quad R' \equiv |\vec{R}'|, \quad \hat{R}' \equiv \frac{\vec{R}'}{R'}. \quad (51)$$

Interchanging the labels 1 and 2 and using index notation we obtain:

$$\int \frac{1}{R_2} \partial_k \frac{1}{R_1} d^3 x = +2\pi \hat{R}'_k \quad (52)$$

Inserting equation (52) into equation (49) we may write I_{kl} as an explicit expression rather than an integral:

$$I_{kl} = -2\pi\partial_{2l}\hat{R}'_k. \quad (53)$$

By explicit substitution we show below that I_{kl} is symmetric with respect to the interchange of k and l :

$$\partial_{2l}\hat{R}'_k = \partial_{2l}\left(\frac{\vec{R}'_k}{R'}\right) = -\frac{\delta_{lk}}{R'} + \vec{R}'_k\partial_{2l}\left(\frac{1}{R'}\right) = -\frac{\delta_{lk}}{R'} + \vec{R}'_k\left(-\frac{\hat{R}'_l}{R'^2}\right) = -\frac{\delta_{lk}}{R'} - \frac{\hat{R}'_k\hat{R}'_l}{R'}, \quad (54)$$

in the above δ_{lk} is Kronecker's delta. Thus:

$$I_{kl} = -2\pi\partial_{2l}\hat{R}'_k = -2\pi\partial_{2k}\hat{R}'_l. \quad (55)$$

We now turn our attention to the second integral of the type $\int d^3x$ appearing in equation (46):

$$II = \int\left(\frac{\hat{R}'_1}{R_1^2} \cdot \frac{\hat{R}'_2}{R_2^2}\right)d^3x = \int\left(\vec{\nabla}\frac{1}{R_1} \cdot \vec{\nabla}\frac{1}{R_2}\right)d^3x. \quad (56)$$

Using the identity:

$$\vec{\nabla}\frac{1}{R_1} \cdot \vec{\nabla}\frac{1}{R_2} = \vec{\nabla} \cdot \left(\frac{1}{R_1}\vec{\nabla}\frac{1}{R_2}\right) - \frac{1}{R_1}\vec{\nabla}^2\frac{1}{R_2}, \quad (57)$$

and taking into account that [4]:

$$\vec{\nabla}^2\frac{1}{R_2} = -4\pi\delta(\vec{R}_2), \quad (58)$$

in which $\delta(\vec{R}_2)$ is a three dimensional delta function. We obtain:

$$\vec{\nabla}\frac{1}{R_1} \cdot \vec{\nabla}\frac{1}{R_2} = \vec{\nabla} \cdot \left(\frac{1}{R_1}\vec{\nabla}\frac{1}{R_2}\right) + \frac{4\pi}{R_1}\delta(\vec{R}_2) \quad (59)$$

The first term on the right is a divergence. Thus, using Gauss theorem its volume integral will become a surface integral, the second term contains a delta function. This means that there is no contribution to the volume integral from the delta term unless $\vec{x} = \vec{x}_2$. It follow that equation (56) becomes:

$$II = \int\left(\frac{\hat{R}'_1}{R_1^2} \cdot \frac{\hat{R}'_2}{R_2^2}\right)d^3x = \int\left(\frac{1}{R_1}\vec{\nabla}\frac{1}{R_2}\right) \cdot d\vec{S} + \frac{4\pi}{R'} \quad (60)$$

Let us look at the surface integral and assume that the system is contained inside an infinite sphere, that is such that the surface integral is taken over a spherical surface of radius $r = |\vec{x}| \rightarrow \infty$:

$$\lim_{r \rightarrow \infty} \int \frac{1}{R_1}\vec{\nabla}\frac{1}{R_2} \cdot d\vec{S} = \lim_{r \rightarrow \infty} \int \frac{1}{R_1}\frac{\hat{R}'_2}{R_2^2} \cdot d\vec{S}. \quad (61)$$

in this case $d\vec{S} = r^2d\Omega \hat{r}$, in which Ω is the solid angle. Also both $R_1 \rightarrow r \rightarrow \infty$, $R_2 \rightarrow r \rightarrow \infty$ and $\hat{R}'_2 \rightarrow \hat{r}$. It follows that:

$$\lim_{r \rightarrow \infty} \int \frac{1}{R_1}\vec{\nabla}\frac{1}{R_2} \cdot d\vec{S} = \lim_{r \rightarrow \infty} \int \frac{1}{r^3}r^2d\Omega = \lim_{r \rightarrow \infty} \int \frac{1}{r}d\Omega = 0. \quad (62)$$

(see also Appendix A.1.2. of [16] for complete explanation of equation (61)). We conclude that simply:

$$II = \frac{4\pi}{R'} \quad (63)$$

Inserting I from equation (55) and II from equation (63) into equation (46) and using again vector notation we obtain:

$$\begin{aligned} P_{field12} &\simeq -\frac{\mu_0}{16\pi^2} \int \int \rho_1 \left[-2\pi \vec{J}_2 \cdot \vec{\nabla}_{\vec{x}_2} \hat{R}'_l - \frac{4\pi}{R'} J_{2l} \right] d^3x_1 d^3x_2 \\ &= \frac{\mu_0}{8\pi} \int \int \rho_1 \left[\vec{J}_2 \cdot \vec{\nabla}_{\vec{x}_2} \hat{R}'_l + \frac{2}{R'} J_{2l} \right] d^3x_1 d^3x_2. \end{aligned} \quad (64)$$

Now we may write:

$$\vec{J}_2 \cdot \vec{\nabla}_{\vec{x}_2} \hat{R}'_l = \vec{\nabla}_{\vec{x}_2} \cdot (\vec{J}_2 \hat{R}'_l) - \hat{R}'_l \vec{\nabla}_{\vec{x}_2} \cdot \vec{J}_2 = \vec{\nabla}_{\vec{x}_2} \cdot (\vec{J}_2 \hat{R}'_l) + \hat{R}'_l \partial_t \rho_2, \quad (65)$$

in which we take into account the charge continuity equation:

$$\partial_t \rho + \vec{\nabla} \cdot \vec{J} = 0. \quad (66)$$

Taking the volume integral of equation (65) and using again Gauss theorem it follows that:

$$\int (\vec{J}_2 \cdot \vec{\nabla}_{\vec{x}_2} \hat{R}'_l) d^3x_2 = \int (\vec{J}_2 \hat{R}'_l) \cdot d\vec{S}_2 + \int \hat{R}'_l \partial_t \rho_2 d^3x_2, \quad (67)$$

taking the integration over the entire space volume, and assuming null current density at infinity it follows that the surface integral vanishes and thus:

$$\int (\vec{J}_2 \cdot \vec{\nabla}_{\vec{x}_2} \hat{R}'_l) d^3x_2 = \int \hat{R}'_l \partial_t \rho_2 d^3x_2. \quad (68)$$

Inserting equation (68) into equation (64) and using vector notation we obtain the simplified expression:

$$\begin{aligned} \vec{P}_{field12} &\simeq \frac{\mu_0}{8\pi} \int \int \rho_1 \left[\partial_t \rho_2 \hat{R}' + \frac{2}{R'} \vec{J}_2 \right] d^3x_1 d^3x_2 \\ &= \frac{\mu_0}{4\pi} \int \int \left[\frac{1}{2} \rho_1 \partial_t \rho_2 \hat{R}' + \frac{\rho_1}{R'} \vec{J}_2 \right] d^3x_1 d^3x_2. \end{aligned} \quad (69)$$

From the above expressions it is easy to calculate $\vec{P}_{field21}$ by exchanging the indices 1 and 2:

$$\vec{P}_{field21} \simeq \frac{\mu_0}{4\pi} \int \int \left[-\frac{1}{2} \rho_2 \partial_t \rho_1 \hat{R}' + \frac{\rho_2}{R'} \vec{J}_1 \right] d^3x_1 d^3x_2. \quad (70)$$

Please note that:

$$\vec{x}_{21} = \vec{x}_2 - \vec{x}_1 = -\vec{x}_{12} = -\vec{R}' \Rightarrow x_{21} = |\vec{x}_{21}| = |\vec{x}_{12}| = x_{12} = R' \quad (71)$$

Combining equation (69) and equation (70) and taking the equation (71) into account, it follows that the total interaction field momentum is:

$$\begin{aligned} \vec{P}_{field} &= \vec{P}_{field12} + \vec{P}_{field21} \\ &= -\frac{\mu_0}{4\pi} \int \int \left[\frac{1}{2} (\rho_2 \partial_t \rho_1 - \rho_1 \partial_t \rho_2) \hat{R}' - (\rho_1 \vec{J}_2 + \rho_2 \vec{J}_1) R'^{-1} \right] d^3x_1 d^3x_2 \end{aligned} \quad (72)$$

Which is exactly equal and opposite to the mechanical momentum calculated in [8] in the case of charged retarded motor, given by:

$$\vec{P}_{mech} = \frac{\mu_0}{4\pi} \int \int \left[\frac{1}{2} (\rho_2 \partial_t \rho_1 - \rho_1 \partial_t \rho_2) \hat{R}' - (\rho_1 \vec{J}_2 + \rho_2 \vec{J}_1) R'^{-1} \right] d^3x_1 d^3x_2 \quad (73)$$

Thus, the total interaction momentum of the system remains null:

$$\vec{P}_T = \vec{P}_{field} + \vec{P}_{mech} = 0 \quad (74)$$

as it was in time $t = 0$, the total momentum is a conserved quantity as expected from Noether's theorem. On the other hand neither the mechanical momentum nor the electromagnetic momentum are constant in time, but still: $\vec{P}_{mech} = -\vec{P}_{field}$ for any future time t .

We shall conclude with a numerical example. Suppose we have a uniform electric field of 3 MV/m (the dielectric strength of air) and a uniform magnetic field of 1 Tesla orthogonal to the electric field, in a box of volume V , we assume for simplicity that the fields vanish outside the given box. Such a system will have a an electromagnetic field momentum in a direction perpendicular to both the electric and magnetic fields. Now if the capacitor generating the electric field is charged from a zero voltage difference to its maximum value than the charged retarded field engine effect will cause the device to move with a linear momentum opposite in direction and equal in strength to the linear momentum of the field. Suppose that the said box has a dimension of 1 km for each side, and the mass of the device is 1 tonne. It then follows that the velocity acquired by the device is $v = 26.5 \text{ m/s} = 95.5 \text{ km/h}$.

4.1. Scenarios with Waveguides and Screens

We have assumed the disappearance of the surface flux on the sphere $r \rightarrow \infty$ (see equation (61) and equation (62)) and zero currents "at infinity"(see equation (68)), but the reader may be interested also in scenarios with waveguides or screens. A scenario in which the two interacting subsystems are placed within a waveguide is depicted in figure 1:

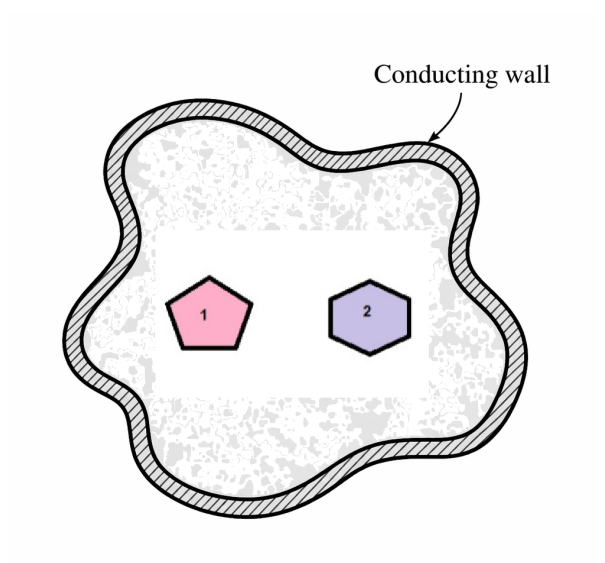


Figure 1. Two charged subsystems 1 and 2 located within a waveguide, the figure depicts a cross section of the system.

Indeed for some technological applications, for example wave guides, it is convenient to use different kind of boundary conditions (on the wave guide walls) and in this case expressions equation (11) and equation (12) cannot be used in a naive way. However, from a fundamental point of view one can always use equation (11) and equation (12) if one also takes into account induced charge and current densities in the wave guide walls. The way those charge and current densities are calculated depends on the model one uses. It is assumed that within a conductor electric fields vanish and so do time varying magnetic field. This implies that if the conductor is taken to be ideal [4] in which case the charges responds to the fields "instantly" we have:

$$\hat{n} \cdot \vec{E} = \frac{\Sigma_{ind}}{\epsilon_0}, \quad \hat{n} \times \vec{B} = \mu_0 \vec{K}_{ind}. \quad (75)$$

In the above \vec{E} is the total electric field produced by the two subsystems depicted in figure 1, and similarly \vec{B} is the total electric field produced by the same two subsystems. Σ_{ind} is the induced surface charge density and \vec{K}_{ind} is the induced current per cross section length. \hat{n} is a unit vector perpendicular to the waveguide surface in the outward direction from the conductor perspective (into the inside of the wave guide).

In the wave guide case we can take the surface S of equation (8) to be slightly inside the conductor (skin depth distance from the boundary between vacuum and metal), in this case the right hand side of equation (8) vanishes. The same is true for the right hand side of equation (20) and equation (21). We notice, however, that in this case we do not have two subsystems but three, in which to the original two we must add the induced charge and current density produced on the wall which consist of an additional subsystem.

5. The momentum of a Charged Retarded Field Engine Lacking Currents Is the Engine Frame

Suppose we have two static charge distributions consisting of a retarded field engine, and suppose one induces a time dependent change in one of the charge distributions generating momentum according to equation (73) after which the charge distribution becomes static again as in figure 2.

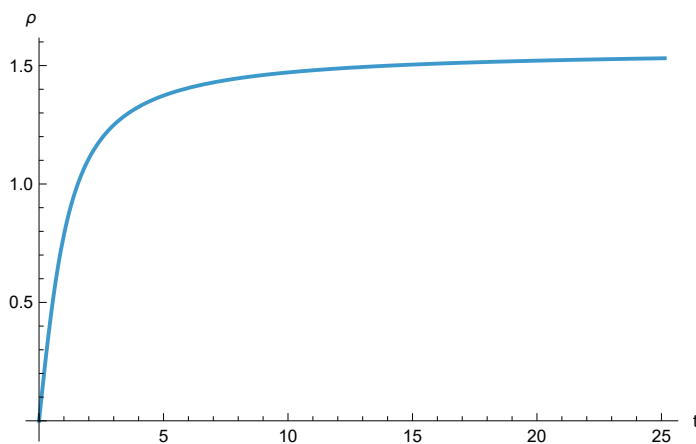


Figure 2. A change is introduced momentarily to ρ after which it becomes static.

Notice, that at this point we have two static charge distributions in the engine's frame but not in the laboratory frame. In the laboratory frame the two subsystems connected with the engine are now moving with velocity \vec{v}_s :

$$\vec{v}_s \equiv \frac{\vec{P}_{mech}}{M}, \quad (76)$$

here M is the mass of the charged retarded field engine. Let \vec{x} be the location vector of a point in the laboratory (inertial) frame, and let $\vec{x}_c(t)$ be the location of the engine in that frame as in figure 3.

It follows that the location of the same point with respect to the engine is:

$$\vec{x}' = \vec{x} - \vec{x}_c(t), \Rightarrow \vec{x} = \vec{x}' + \vec{x}_c(t). \quad (77)$$

And also that:

$$\vec{v}_s = \frac{d\vec{x}_c(t)}{dt}. \quad (78)$$

The charge density can be expressed in either the laboratory (inertial) frame or in the engine frame. In the first case it is designated by ρ and in the second by ρ_m , those two functions are related as follows:

$$\rho(\vec{x}, t) = \rho_m(\vec{x}', t) = \rho_m(\vec{x} - \vec{x}_c(t), t). \quad (79)$$

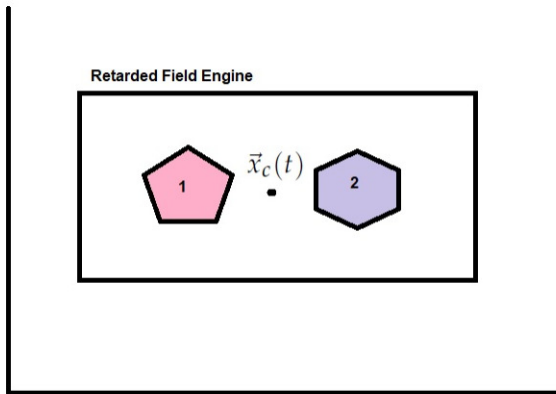


Figure 3. The Retarded field engine comprised of charged subsystems 1 and 2, the engine is located at $\vec{x}_c(t)$ with respect to the inertial system.

In the case that the charge distribution is "static" in the engine frame this reduces to:

$$\rho(\vec{x}, t) = \rho_m(\vec{x} - \vec{x}_c(t)). \quad (80)$$

Similarly the partial temporal derivative can be calculated as follows:

$$\partial_t \rho(\vec{x}, t)|_{\vec{x}} = \partial_t \rho_m(\vec{x} - \vec{x}_c(t), t)|_{\vec{x}} = -\vec{v}_s \cdot \vec{\nabla} \rho_m + \partial_t \rho_m|_{\vec{x}'}. \quad (81)$$

And for the case the charge density is "static" in the engine frame this reduces to:

$$\partial_t \rho(\vec{x}, t)|_{\vec{x}} = -\vec{v}_s \cdot \vec{\nabla} \rho_m = -\vec{\nabla} \cdot (\rho \vec{v}_s). \quad (82)$$

Taking into account the continuity equation (66) we notice that although no current densities were initially assumed in the system, it now follows that from the laboratory point of view the engine now carries current density of the form:

$$\vec{j} = \rho \vec{v}_s \quad (83)$$

We are now at a position to calculate the mechanical momentum given in equation (73) of such a system (this is equal in size and opposite in direction to the electromagnetic linear momentum):

$$\begin{aligned} P_{mech\ l} &= \frac{\mu_0}{4\pi} \iint \left[\frac{1}{2} (\rho_2 \partial_t \rho_1 - \rho_1 \partial_t \rho_2) \hat{R}'_l - (\rho_1 \vec{j}_{2\ l} + \rho_2 \vec{j}_{1\ l}) R'^{-1} \right] d^3 x_1 d^3 x_2 \\ &= \frac{\mu_0}{4\pi} \iint \left[\frac{v_s^k}{2} (\rho_1 \partial_{2\ k} \rho_2 - \rho_2 \partial_{1\ k} \rho_1) \hat{R}'_l - \frac{2}{R'} \rho_1 \rho_2 v_{s\ l} \right] d^3 x_1 d^3 x_2. \end{aligned} \quad (84)$$

Now using equation (54) it follows that:

$$\partial_{2\ k} \hat{R}'_l = -\frac{\delta_{lk}}{R'} - \frac{\hat{R}'_k \hat{R}'_l}{R'^2}, \quad \partial_{1\ k} \hat{R}'_l = \frac{\delta_{lk}}{R'} + \frac{\hat{R}'_k \hat{R}'_l}{R'^2}. \quad (85)$$

Hence:

$$\begin{aligned} \int \partial_{2\ k} \rho_2 \hat{R}'_l d^3 x_2 &= \int [\partial_{2\ k} (\rho_2 \hat{R}'_l) - \rho_2 \partial_{2\ k} \hat{R}'_l] d^3 x_2 = \oint \rho_2 \hat{R}'_l dS_{2\ k} - \int \rho_2 \partial_{2\ k} \hat{R}'_l d^3 x_2 \\ &= \int \rho_2 \left(\frac{\delta_{lk}}{R'} + \frac{\hat{R}'_k \hat{R}'_l}{R'^2} \right) d^3 x_2. \end{aligned} \quad (86)$$

In the above we have used Gauss theorem and assumed as usual that there are no charge density on an infinite far encapsulating surface. Similarly:

$$\begin{aligned} \int \partial_{1k} \rho_1 \hat{R}'_l d^3 x_1 &= \int [\partial_{1k} (\rho_1 \hat{R}'_l) - \rho_1 \partial_{1k} \hat{R}'_l] d^3 x_1 = \oint \rho_1 \hat{R}'_l dS_{1k} - \int \rho_1 \partial_{1k} \hat{R}'_l d^3 x_1 \\ &= - \int \rho_1 \left(\frac{\delta_{lk}}{R'} + \frac{\hat{R}'_k \hat{R}'_l}{R'} \right) d^3 x_1. \end{aligned} \quad (87)$$

Plugging equation (86) and equation (87) into equation (84) will result in:

$$\begin{aligned} P_{mech\ l} &= \frac{\mu_0}{4\pi} \int \int \left\{ \frac{v_{s\ k}}{2} \left[\frac{\rho_1 \rho_2}{R'} (\delta_{lk} + \hat{R}'_k \hat{R}'_l) + \frac{\rho_1 \rho_2}{R'} (\delta_{lk} + \hat{R}'_k \hat{R}'_l) \right] \right. \\ &\quad \left. - \frac{2}{R'} \rho_1 \rho_2 v_{s\ l} \right\} d^3 x_1 d^3 x_2 \\ &= \frac{\mu_0}{4\pi} \int \int \left[v_{s\ k} \frac{\rho_1 \rho_2}{R'} (\delta_{lk} + \hat{R}'_k \hat{R}'_l) - \frac{2}{R'} \rho_1 \rho_2 v_{s\ l} \right] d^3 x_1 d^3 x_2 \\ &= \frac{\mu_0}{4\pi} \int \int \frac{\rho_1 \rho_2}{R'} [v_{s\ k} \hat{R}'_k \hat{R}'_l - v_{s\ l}] d^3 x_1 d^3 x_2. \end{aligned} \quad (88)$$

This can be written in vector notation in the form:

$$\vec{P}_{mech} = -\frac{k}{c^2} \int \int \frac{\rho_1 \rho_2}{R'} (\vec{v}_s - (\vec{v}_s \cdot \hat{R}') \hat{R}') d^3 x_1 d^3 x_2. \quad (89)$$

in which we used the identity $\frac{\mu_0}{4\pi} = \frac{k}{c^2}$. The momentum is dependent on the perpendicular velocity:

$$\vec{v}_{s\ \perp} \equiv \vec{v}_s - (\vec{v}_s \cdot \hat{R}') \hat{R}' \quad \Rightarrow \quad \vec{P}_{mech} = -\frac{k}{c^2} \int \int \frac{\rho_1 \rho_2}{R'} \vec{v}_{s\ \perp} d^3 x_1 d^3 x_2. \quad (90)$$

Obviously this cannot be solved in conjunction with equation (76) for a general charge distribution unless for specific circumstances, such that:

$$M \vec{v}_s = -\frac{k}{c^2} \int \int \frac{\rho_1 \rho_2}{R'} \vec{v}_{s\ \perp} d^3 x_1 d^3 x_2. \quad (91)$$

Let us assume a system consisting of two point charges such that (see figure 4):

$$\rho_1 = q_1 \delta(\vec{x}_1 - \vec{x}_1(t)), \quad \rho_2 = q_2 \delta(\vec{x}_2 - \vec{x}_2(t)), \quad (92)$$

in which δ is a three dimensional Dirac delta function.

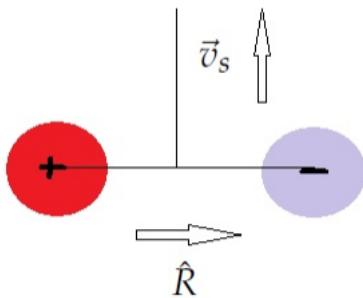


Figure 4. Two point charges. The difference between their displacement vector is perpendicular to the velocity of the system.

Thus equation (88) takes the form:

$$\begin{aligned}\vec{P}_{mech} &= -\frac{k}{c^2} \frac{q_1 q_2}{R(t)} (\vec{v}_s - (\vec{v}_s \cdot \hat{R}(t)) \hat{R}(t)), \\ \vec{R}(t) &\equiv \vec{x}_1(t) - \vec{x}_2(t), \quad R(t) = |\vec{R}(t)|, \quad \hat{R}(t) = \frac{\vec{R}(t)}{R(t)}.\end{aligned}\quad (93)$$

Now, if the velocity is set during the system charging to be perpendicular to the vector $\vec{R}(t)$ we obtain simply:

$$\vec{P}_{mech} = -\frac{k}{c^2} \frac{q_1 q_2}{R(t)} \vec{v}_s. \quad (94)$$

Or according to equation (91) we obtain, regardless of the velocity \vec{v}_s the equation:

$$M = -\frac{k}{c^2} \frac{q_1 q_2}{R(t)}. \quad (95)$$

This can only be satisfied if the displacement between the charges is fixed: $R(t) = R_c$, and the charges are of opposite signs, which is the case for charges in a capacitor. In this case:

$$M = \frac{k}{c^2} \frac{|q_1| |q_2|}{R_c}. \quad (96)$$

If the charges are equal in magnitude by opposite in sign: $q = |q_1| = |q_2|$ we obtain the condition:

$$Mc^2 = k \frac{q^2}{R_c}, \quad (97)$$

that is the rest mass energy of the device must be equal to its electrostatic energy. This is a very stringent condition for example if the system is a classical hydrogen atom it follows that $R_c \simeq 1.5 \cdot 10^{-18}$ meters which is much smaller than the radius of the proton: $8.4 \cdot 10^{-16}$ meters, this system is better described as a Neutron. For a classical positronium (a bound system of an electron and positron) the distance would be $R_c \simeq 1.4 \cdot 10^{-15}$ meters, at this distance the electron and positron cannot remain at a constant distance due to electrostatic attraction and will probably annihilate each other. Notice, however, that the phenomenon of annihilation is beyond the scope of the classical electrodynamics description of the current paper and requires a quantum electrodynamic description.

Thus a more easy implementation will involve currents in the engine's frame (and not just with respect to the laboratory), those may be either charge currents of magnetic currents. Indeed in [8] we describe a charged retarded field engine based on a capacitor/electret and coil carrying current. In [23] we describe a charged retarded field engine based on two wires carrying periodic currents, while in [24] we describe a charged retarded field engine composed of a permanent magnet and a capacitor.

6. Conclusion

In conclusion, we investigate the legitimacy of momentum conservation concerning a charged retarded field engine in this paper. We take into account the non linearity of the electromagnetic linear momentum which is proportional to the integral of the vector multiplication of the electric and magnetic fields. Although Maxwell's electromagnetism is linear in charge and current densities the unique characteristics of linear momentum of electromagnetic fields makes this specific quantity somewhat reminiscent of the convective part of the material derivative of fluid dynamics which is quadratic in the velocity field and thus has profound nonlinear consequences, see for example [25,26].

We make use of Jefimenko's field expression for the electric and magnetic fields in which the field sources are time dependent. This is of course a common situation in nature and it entails taking into account retardation phenomena. Those general solutions to the classical Maxwell equations assume some general properties such as causality and the vanishing of field at infinity. We do consider the

propagation of fields in matter (for this case please consult [24]), and mention only briefly the case of two systems encapsulated in a metal box. We also do not consider quantum electrodynamic effects and thus neglect possible heating of a metal vessel containing the two subsystems and the generation of thermal photons which should not create net momentum due to their stochastic character.

With these formulae, we determine the momentum acquired by the electromagnetic fields. When accounting for both the momentum of the field and the mechanical momentum of the device's material component, conservation of momentum is upheld. Therefore, the charged retarded motor is capable of generating forward momentum independently of any external forces, solely through internal interaction with the field and while maintaining the total momentum of the "engine + field" system. Thus, this paper has explored the principles of linear momentum conservation in charged retarded systems. This system offers a ground breaking method for space propulsion, aiming to address the major drawbacks of conventional rocket fuel. By harnessing the power of electromagnetic fields, spacecraft fitted with these engines could achieve greater speeds and distances while using significantly less fuel, thereby making interplanetary and interstellar travel more achievable.

The main scientific result of this paper is the demonstration that a charged retarded field engine does not violate the laws of conservation of linear momentum, in fact the total linear momentum remains null. This is so because the total momentum is the sum of the linear mechanical momentum and the electromagnetic linear momentum which are always equal in size and opposite in direction to each other in a charged retarded field engine. Our calculations differ fundamentally from the previous ones by extending them to the case of arbitrary charge and current distributions.

Suggestion for practical implementation as well as recommendations for designers and engineers using the principles of linear momentum conservation in charged lagging systems are given in a few published papers. In [8] we describe a charged retarded field engine based on a capacitor/electret and coil. In [23] we describe a charged retarded field engine based on two wires carrying periodic currents, while in [24] we describe a charged retarded field engine composed of a permanent magnet and a capacitor. Suggestions for implementations involving material design are given in [9,10].

Appendix A. The condition for which subsystem interaction generated momentum is much larger than self generated momentum for each subsystem considered separately

In order to derive equation (34) we had to assume that: $P_{mech} \gg P_{mech 1}$ and $P_{mech} \gg P_{mech 2}$. P_{mech} is the self generated momentum of the entire system assumed to be generated by the interaction of two subsystems and is given by equation (73). The basic intuition behind those assertions is the assumption that a retarded effect should be less when subsystem are localized and retardation time is small compared to the retardation time between two well separated subsystems in which the retardation time is considerable larger. However, this intuition will not suffice and one desires a numerical criteria which we shall now derive.

If each subsystem is just a classical point particle then obviously there is no self interaction for each of them and $P_{mech 1} = P_{mech 2} = 0$. Notice, however, that the two subsystems may be extended and thus a more elaborate analysis is required. Let us assume that subsystem 1 contains N classical point particles (this subsystem may or may not be macroscopic). Thus we may take advantage of the analysis described in section 6 of [22]. We shall briefly repeat the analysis here.

Let us define the center of mass of subsystem 1 in the following form:

$$\vec{R}_{cm} = \frac{1}{M} \sum_{i=1}^N m_i \vec{x}_i, \quad M \equiv \sum_{i=1}^N m_i. \quad (A1)$$

\vec{x}_i is the time dependent location vector of particle i and m_i is the particle's mass.

The motion of a the classical center of mass can be written in terms of the motion of the particles of the system:

$$\vec{v}_{cm}(t) = \frac{d\vec{R}_{cm}}{dt} = \frac{1}{M} \sum_{i=1}^N m_i \vec{v}_i(t) = \frac{1}{M} \sum_{i=1}^N \vec{p}_{cl\ i}(t), \quad \Rightarrow \vec{P}_{mech\ 1} = \sum_{i=1}^N \vec{p}_{cl\ i}(t) = M\vec{v}_{cm}(t). \quad (A2)$$

We can suppose without loss of generality that at $t = 0$, $\vec{R}_{cm}(0)$ is the origin of axes, that is $\vec{R}_{cm}(0) = \vec{0}$, and that at the same initial time the subsystem is at rest that is $\vec{v}_{cm}(0) = \vec{0}$. We shall inquire, what are the conditions to put the system in motion by its own internal interactions. Those are obviously the conditions for the acceleration of the center of mass at the same time $t = 0$ to be different from zero:

$$\vec{a}\dot{c}_{cm}(t) = \frac{d\vec{v}_{cm}}{dt} = \frac{1}{M} \frac{d\vec{P}_{mech\ 1}}{dt}, \quad \vec{a}\dot{c}_{cm}(0) \neq 0. \quad (A3)$$

For only in this case can we expect to have at future time a velocity different from zero which will cause the subsystem to move. Thus:

$$\vec{a}\dot{c}_{cm}(t) = \frac{1}{M} \sum_{i=1}^N m_i \vec{a}\dot{c}_i(t) = \frac{1}{M} \sum_{i=1}^N \vec{F}_i. \quad (A4)$$

in we have used Newton's second law. As the fundamental forces come about through interactions (that is due the effect of one particle on another), it follows that:

$$\vec{F}_i = \sum_{j=1, j \neq i}^N \vec{F}_{ji}. \quad (A5)$$

Thus:

$$\vec{a}\dot{c}_{cm}(t) = \frac{1}{M} \sum_{i=1}^N \sum_{j=1, j \neq i}^N \vec{F}_{ji} = \frac{1}{M} \sum_{\text{all pairs } (i,j) \ j \neq i}^{\frac{N(N-1)}{2}} (\vec{F}_{ji} + \vec{F}_{ij}). \quad (A6)$$

Now according to Newton's third law:

$$\vec{F}_{ji} = -\vec{F}_{ij} \quad (A7)$$

And it follows that:

$$\vec{a}\dot{c}_{cm}(t) = 0. \quad (A8)$$

So a closed system cannot move as a system, it needs an external force to cause motion. However, as we require Lorentz invariance of any physical interaction, all interaction must be retarded. And thus Newton third law can only be an approximation as was shown previously [8]. The total force between two subsystems i and j in an electromagnetic system calculated to second order in $\frac{1}{c}$ ([8] equation (81)):

$$\vec{F}_T^{[2]} = \vec{F}_{ij}^{[2]} + \vec{F}_{ji}^{[2]} = \frac{\mu_0}{4\pi} \partial_t \int \int \left[\frac{1}{2} (\rho_j \partial_t \rho_i - \rho_i \partial_t \rho_j) \hat{R}_{ij} - (\rho_i \vec{J}_j + \rho_j \vec{J}_i) R_{ij}^{-1} \right] d^3 x'_i d^3 x'_j. \quad (A9)$$

Let us choose the two systems to be two classical particles with indices i and j , those charged particles are associated with charge and current densities:

$$\begin{aligned} \rho_{c1}(\vec{x}, t) &= q_1 \delta^3(\vec{x} - \vec{x}_1(t)), & \rho_{c2}(\vec{x}, t) &= q_2 \delta^3(\vec{x} - \vec{x}_2(t)), \\ \vec{J}_{c1}(\vec{x}, t) &= q_1 \vec{v}_1(t) \delta^3(\vec{x} - \vec{x}_1(t)), & \vec{J}_{c2}(\vec{x}, t) &= q_2 \vec{v}_2(t) \delta^3(\vec{x} - \vec{x}_2(t)). \end{aligned} \quad (A10)$$

obviously every two electromagnetically interacting particles i, j in a given system will yield similar expressions, which must be summed through equation (A6) to obtain the center of mass acceleration which is not null. For the prevalent classical charged particle the most important force is electromag-

netic while other interactions (gravitational & nuclear) can be neglected (but must be also retarded). After some straight forward calculations we obtain:

$$\vec{P}_{Tij}^{[2]} = -\frac{kq_i q_j}{2c^2 R_{ij}(t)} [(\vec{v}_i + \vec{v}_j) + ((\vec{v}_i + \vec{v}_j) \cdot \hat{R}_{ij}(t)) \hat{R}_{ij}(t)], \quad \Rightarrow \quad \dot{\vec{P}}_{Tij}^{[2]} = \frac{d\vec{P}_{Tij}^{[2]}}{dt}. \quad (\text{A11})$$

This can be plugged into equation (A6) and we obtain

$$\frac{d\vec{P}_{mech\ 1}}{dt} = M \vec{a} \vec{c}_{cm}(t) = \frac{d}{dt} \sum_{\text{all pairs } (i,j) \ j \neq i}^{\frac{N}{2}(N-1)} \vec{P}_{Tij}^{[2]}. \quad (\text{A12})$$

As we assumed that the center of mass at $t = 0$ is at rest it follows that:

$$\vec{P}_{mech\ 1}(t) = \sum_{\text{all pairs } (i,j) \ j \neq i}^{\frac{N}{2}(N-1)} (\vec{P}_{Tij}^{[2]}(t) - \vec{P}_{Tij}^{[2]}(0)). \quad (\text{A13})$$

Now sub system 1 is not configured to serve as a charged retarded field engine alone (without interacting with subsystem 2), hence the values of velocities of particles in this subsystem can be taken as random at any time t . Calculating the expectation value of $\vec{P}_{mech\ 1}(t)$ we obtain the result:

$$E[\vec{P}_{mech\ 1}(t)] = \sum_{\text{all pairs } (i,j) \ j \neq i}^{\frac{N}{2}(N-1)} (E[\vec{P}_{Tij}^{[2]}(t)] - E[\vec{P}_{Tij}^{[2]}(0)]). \quad (\text{A14})$$

Now if $E[\vec{P}_{Tij}^{[2]}(t)] = 0$ at every time t it follows that $E[\vec{P}_{mech\ 1}(t)] = 0$, and if we assume that the velocities of the microscopic particles in a macroscopic subsystem probe the velocity distribution system in accordance with the distribution of velocities of a single microscopic particle (an ergodic assumption) it follows that $\vec{P}_{mech\ 1} \simeq E[\vec{P}_{mech\ 1}(t)] = 0$, which is what is claimed (and is true also for subsystem 2 for the same reasons). For the expectation value of $E[\vec{P}_{mech\ 1}(t)]$ to vanish it suffices that $E[\vec{P}_{Tij}^{[2]}(t)] = 0$ for any time t (including $t = 0$). Suppose that the velocities of all particles form a 3N dimensional random variable, and let us assume that each particle's velocity is independent from any other particle's velocity, such that the probability density function can be written in the form:

$$f_{\vec{v}_1 \dots \vec{v}_N}(\vec{v}_1 \dots \vec{v}_N) = f_{\vec{v}_1}(\vec{v}_1) f_{\vec{v}_2}(\vec{v}_2) \dots f_{\vec{v}_N}(\vec{v}_N). \quad (\text{A15})$$

If subsystem 1 is in thermal equilibrium then we obtain a Boltzmann type of expression:

$$f_{\vec{v}_i}(\vec{v}_i) = \frac{1}{\sqrt{2\pi}\sigma_i} e^{-\frac{v_i^2}{2\sigma_i^2}}. \quad (\text{A16})$$

Thus:

$$\begin{aligned} E[\vec{P}_{Tij}^{[2]}] &= \int f_{\vec{v}_1 \dots \vec{v}_N}(\vec{v}_1 \dots \vec{v}_N) \vec{P}_{Tij}^{[2]} dv^{3N} \\ &= \int [f_{\vec{v}_1}(\vec{v}_1) f_{\vec{v}_2}(\vec{v}_2) \dots f_{\vec{v}_{i-1}}(\vec{v}_{i-1}) f_{\vec{v}_{i+1}}(\vec{v}_{i+1}) \dots f_{\vec{v}_{j-1}}(\vec{v}_{j-1}) f_{\vec{v}_{j+1}}(\vec{v}_{j+1}) \dots f_{\vec{v}_N}(\vec{v}_N) \\ &\quad \left(\int f_{\vec{v}_i}(\vec{v}_i) f_{\vec{v}_j}(\vec{v}_j) \vec{P}_{Tij}^{[2]} dv_i^3 dv_j^3 \right) dv^{3N-6}] = 0 \end{aligned} \quad (\text{A17})$$

In which dv_{ij}^{3N-6} is a volume element in velocity space of dimension $3N - 6$ referring to all particle velocities except particle i and particle j . The vanishing of the integral is dependent on the Gaussian form of the probability density function as specified in equation (A16).

Funding: This research received no external funding.

Data Availability Statement: No new data were created or analyzed in this study. Data sharing is not applicable to this article.

Conflicts of Interest: The authors declare no conflict of interest.

References

1. Newton, I. *Philosophiæ naturalis principia mathematica*; Vol. 1, S. PEPYS, Reg. Soc. PRÆSES: London, England, 1687.
2. Goldstein P, P.C.J.; JL, S. *Classical Mechanics*; Pearson; 3 edition: London, England, 2001.
3. Arya, A. *Introduction to Classical Mechanics*; Allyn and Bacon: Boston, MA, USA, 1990.
4. Jackson, J.D. *Classical electrodynamics*, 3rd ed. ed.; Wiley: New York, NY, 1999.
5. Einstein, A. On the electrodynamics of moving bodies **1905**.
6. Feynman, R.P.; Leighton, R.B.; Sands, M. *The Feynman lectures on physics, Vol. I: The new millennium edition: mainly mechanics, radiation, and heat*; Vol. 1, Basic books: New York, New York, USA, 2011.
7. D'Abramo, G. On apparent faster-than-light behavior of moving electric fields. *The European Physical Journal Plus* **2021**, *136*, 301.
8. Rajput, S.; Yahalom, A. Newton's Third Law in the Framework of Special Relativity for Charged Bodies. *Symmetry* **2021**, *13*, 1250.
9. Yahalom, A. Newton's Third Law in the Framework of Special Relativity for Charged Bodies Part 2: Preliminary Analysis of a Nano Relativistic Motor. *Symmetry* **2022**, *14*, 94. <https://doi.org/https://doi.org/10.3390/sym14010094>.
10. Yahalom, A. Implementing a Relativistic Motor over Atomic Scales. *Symmetry* **2023**, *15*, 1613. <https://doi.org/https://doi.org/10.3390/sym15081613>.
11. Griffiths, D.J.; Heald, M.A. Time-dependent generalizations of the Biot–Savart and Coulomb laws. *American Journal of Physics* **1991**, *59*, 111–117.
12. Jefimenko, O. *Electricity and Magnetism 2nd edn*; Electret Scientific: Star City, WV, 1989.
13. Tuval, M.; Yahalom, A. Newton's Third Law in the Framework of Special Relativity. *The European Physical Journal Plus* **2014**, *129*, 240.
14. Yahalom, A. Retardation in Special Relativity and the Design of a Relativistic Engine. *Acta Physica Polonica A* **2017**, *131*, 1285–1288. <https://doi.org/DOI:10.12693/APhysPolA.131.1285>.
15. Tuval, M.; Yahalom, A. Momentum conservation in a relativistic engine. *The European Physical Journal Plus* **2016**, *131*, 1–12.
16. Rajput, S.; Yahalom, A.; Qin, H. Lorentz symmetry group, retardation and energy transformations in a relativistic engine. *Symmetry* **2021**, *13*, 420.
17. Breitenberger, E. Magnetic interaction between charged particles. *American Journal of Physics* **1968**, *36*, 505–515.
18. Scanio, J. Conservation of momentum in electrodynamics - an example. *American Journal of Physics* **1975**, *43*, 258–260.
19. Portis, A. *Electromagnetic Fields, Source and Media*; John Wiley & Sons Inc: New-York, NY, USA, 1978.
20. Jefimenko, O. A Relativistic Paradox Seemingly Violating Conservation of Momentum in Electromagnetic Systems. *Eur. J. Phys.* **1999**, *20*, 39.
21. Jefimenko, O. *Causality, Electromagnetic Induction and Gravitation 2nd edn*; Electret Scientific: Star City, WV, 2000.
22. Yahalom, A. Quantum Retarded Field Engine. *Symmetry* **2024**, *16*, 1109.
23. Yahalom, A. Time-Dependent Retarded Microwave Electromagnetic Motors. *Appl. Sci.* **2024**, *14*, 10975.
24. Sharma, P.; Yahalom, A. A Charged Relativistic Engine Based on a Permanent Magnet. *Appl. Sci.* **2024**, *14*, 11764.

25. Gao, X.Y. Auto-Bäcklund Transformation with the Solitons and Similarity Reductions for a Generalized Nonlinear Shallow Water Wave Equation. *Qualitative Theory of Dynamical Systems* **2024**, *23*, 181.
26. Gao, X.Y. In plasma physics and fluid dynamics: Symbolic computation on a (2+1)-dimensional variable-coefficient Sawada-Kotera system. *Applied Mathematics Letters* **2025**, *159*, 109262. <https://doi.org/https://doi.org/10.1016/j.aml.2024.109262>.

Disclaimer/Publisher's Note: The statements, opinions and data contained in all publications are solely those of the individual author(s) and contributor(s) and not of MDPI and/or the editor(s). MDPI and/or the editor(s) disclaim responsibility for any injury to people or property resulting from any ideas, methods, instructions or products referred to in the content.