

Article

Not peer-reviewed version

Feasibility Study on AM Manufacturing of Feed Horn Operating in D-Band

[Giuseppe Addamo](#)*, [Lorenzo Scalcinati](#), Mario Zannoni, [Oscar Antonio Peverini](#), [Flaviana Calignano](#)

Posted Date: 10 December 2024

doi: 10.20944/preprints202412.0783.v1

Keywords: PBF-LB/M; additive manufacturing; smooth wall horn; D-band



Preprints.org is a free multidisciplinary platform providing preprint service that is dedicated to making early versions of research outputs permanently available and citable. Preprints posted at Preprints.org appear in Web of Science, Crossref, Google Scholar, Scilit, Europe PMC.

Copyright: This open access article is published under a Creative Commons CC BY 4.0 license, which permit the free download, distribution, and reuse, provided that the author and preprint are cited in any reuse.

Article

Feasibility Study on AM Manufacturing of Feed Horn Operating in D-Band

Giuseppe Addamo ^{1,*}, Lorenzo Scalcinati ², Mario Zannoni ², O.A. Peverini ¹
and Flaviana Calignano ³

¹ Consiglio Nazionale delle Ricerche, IEIIT, Corso Duca degli Abruzzi 24, 10129, Torino, Italy

² Physics Department, University of Milano Bicocca, Piazza della Scienza 3, Milano 20126, Italy

³ Department of Management and Production Engineering (DIGEP), Politecnico di Torino, Corso Duca degli Abruzzi, 24 - 10129 Torino, Italy

* Correspondence: giuseppe.addamo@cnr.it

Abstract: This paper presents the outcomes of a feasibility study on the manufacturing of D-band horn antenna through Low Power Bed Fusion process. Different prototypes have been realized and tested showing nice results in terms of co-polarization component. On the other hand, a spurious cross-polarization component is present in the radiation pattern even in the principal planes, limiting the device to single polarization applications. A mechanical study of the realized devices has been conducted on the horn internal channel to understand the reasons of this issue and, subsequently, to address where improving the manufacturing process.

Keywords: PBF-LB/M; additive manufacturing; smooth wall horn; D-band

1. Introduction

The scientific community is showing, nowadays, an increasing interest in the sub-terahertz frequency band for climate monitoring and astrophysical observation [1,2]. Sub-terahertz remote sensing offers a unique capability for improving climate-change and weather monitoring from Space, thanks to higher sensitivity to fundamental observable parameters, such as columnar water-vapor distribution. This parameter is an indicator of a proxy of extreme phenomena that often hit the Mediterranean countries. On the other hand, astrophysical research increasingly quests for the realization of focal planes populated by receivers with tens or even hundreds of feed horns. QUBIC (Q&U Bolometric Interferometer for Cosmology) observation mission is a significant example. The QUBIC experiment is based on the bolometric interferometry to measure the B-mode polarization anisotropies of the Cosmic Microwave Background (CMB). The experiment consists on ground-based observations of the sky in two main spectral bands centered at 150 and 220 GHz [3]. The instrument, which is already operative in a reduced version with 64 horns, known as TD (Technological Demonstrator), will be composed by a rotating half-wave plate and a polarization grid exploited to modulate the measured polarization of the incoming signal from the sky. In the final version, an array of 400 corrugated horns collects the radiation and subsequently suitably detect it.

In both cited application domains, electroforming represents, nowadays, the best manufacturing technique to guarantee a good accordance between simulated and measured performance in terms of both radiation pattern and insertion loss. Its cost is the main drawback of this technique that, indeed, prevents its use for horn arrays larger than a few elements.

An affordable alternative, already implemented in radio-astronomical instrumentation, is the metallic platelet technique [4]. This approach makes use of packs of metal sheets (platelets) holed to reproduce the feed horn profile [5,6]. Unfortunately, at frequencies higher than ~100 GHz, even the metallic platelets show some limitations due to the discontinuities/air gaps among the plates that can compromise electromagnetic and thermal performances. It is worth to mention that the front-ends, for these instruments, are in most cases cooled at cryogenic temperatures. Therefore, this drawback

is particularly critical for the study of the Cosmic Microwave Background where the control of the instrumental systematic effects is fundamental in the polarized B-modes detection [7–9].

A viable solution to the cited problems can be represented by Additive Manufacturing (AM) processes [10] whose employment in the microwave/antenna community has increasing exponential in the last ten years thanks to their features such as net shapes and free-form capability [11]. In the case of all metal devices, such as horn antenna and relevant feed-chain, the most suitable process is the Low Power Bed Fusion with aluminum-based alloy (PBF-LB/M/AlSi10Mg). Its usual application domain is in the realization of devices operating in K/Ka bands (i.e. from 10 to 30 GHz) [12,13]. The manufacturing of complex waveguide channels at higher frequency, indeed, suffers on some process limits in terms of accuracy and surface roughness. However, considering the manufacturing of horn antenna, quite interesting examples can be found even at higher frequency (such as in Q/V and W bands [14,15]).

Starting from the nice outcomes of the cited papers in terms of measured cross-polarization and return loss, here we discuss the results of a feasibility study on the applicability of LPBF process to manufacture feed horns in D band (110-170 GHz). In particular, as significant benchmark, we have considered the design of a feed horn design operating in the frequency range 130-160 GHz with radiation performance compatible with the feed horn of the QUBIC experiment.

We have manufactured and fully electromagnetic characterized three AM prototypes with different external profiles. Although the high frequency operative band, we have observed a nice accordance with the predicted performance in the co-polar component. The radiation patterns present, unfortunately, an undesired cross-polarization term putting in evidence that the actual technological readiness of this manufacturing process is not ready for the realization of dual-polarization system in D-band. Through a mechanical analysis of the realized part and elaboration of the relevant data, we have focused on the issues that can have generated the measured problem. These outcomes can be used as starting point to improve the manufacturing process.

The article is divided in the following way. Section 2 deals with the choice of the horn architecture and its design. Sections 3 discusses the manufacturing of the prototypes and the antenna measurements. Finally, Section 4 is devoted on the mechanical nondestructive testing, through tomography, and the relevant data elaboration.

2. Feed Horn Design

In the present study, we consider the requirements of QUBIC feed in terms of operative band, return loss, cross-polarization level and field taper at the reflector illumination angle. Although corrugated horn architecture is the most suitable in terms of cross-polarization performance, its manufacturing through AM process is particularly cumbersome since the internal corrugations are not self-supporting and the device can be realized only considering an inclination of the part in the building machine. This usually translates in worse performance of the antenna. On the other hand, smooth wall solutions do not present this problem since their structure is fully self-supporting, so the part can be oriented in the building machine parallel to the laser axis assuring better manufacturing accuracy [16]. For this reason, we have adopted this architecture in the present study. The input and radiating circular waveguide diameters have been selected identically to the QUBIC horn i.e. $D_i = 2$ mm, $D_{ext} = 10.92$ mm, respectively. According to the design technique presented in [17], we have obtained the horn geometry by optimizing its generatrix profile with 14 control nodes. We have chosen such high value to cover the large (around 21%) operative bandwidth i.e. from 130 GHz to 160 GHz. **Error! Reference source not found.** reports a 2D section of the final horn profile. According to the reference system shown in the plot, the radial and longitudinal coordinates of the horn generatrix are (in millimeter):

$$\rho_i = \{1 \ 1.09 \ 2.107 \ 2.279 \ 2.454 \ 2.531 \ 2.542 \ 2.667 \ 2.798 \ 3.470 \ 3.608 \ 3.755 \ 4.824 \ 5.46 \ 5.46\};$$

$$z_i = \{0 \ 6.42 \ 11.3 \ 12.06 \ 12.97 \ 13.69 \ 20.63 \ 22.22 \ 22.96 \ 25.23 \ 26.05 \ 27.37 \ 32.39 \ 32.67 \ 33.65\};$$

Error! Reference source not found. reports the simulated performance of the horn in terms of return loss and maximum cross-polarization level within the angle $\theta^* = 60^\circ$. The plot shows a quite nice level of return loss and cross-polarization both better of -35 dB in a wider frequency band. The design has been carried out using an in-house numerical code. This code is based on the mode-matching and Coupled Integral Equation Technique (CIET) [18].

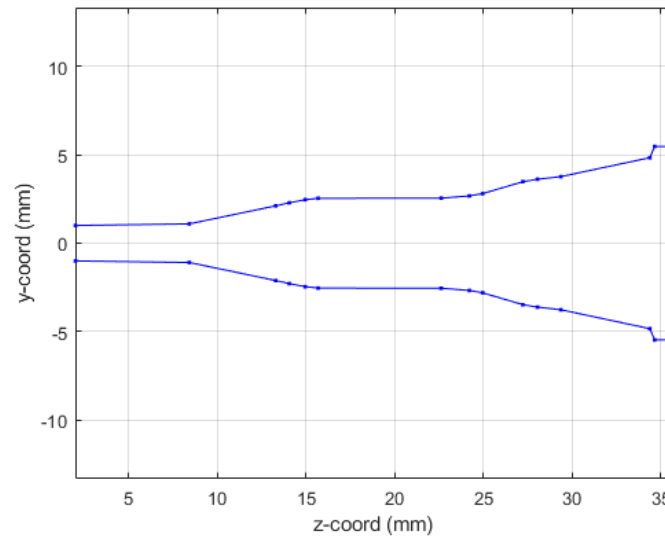


Figure 1. Geometry of the designed feed horn.

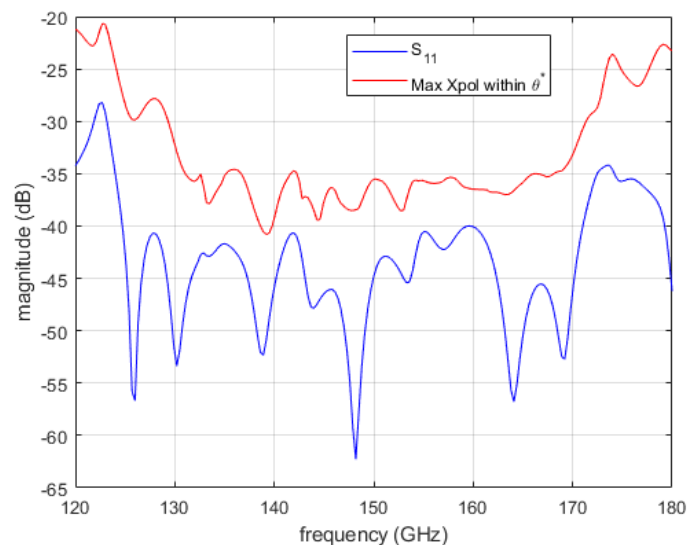


Figure 2. Simulated performance of the smooth wall horn shown in **Error! Reference source not found.**.

The horn external profile (shown in **Error! Reference source not found.**) has been designed to minimize the envelope but at the same time to guarantee a sufficient rigidity of the antenna. According to previous experience in the manufacturing of feed horn [14], we have employed a constant metal thickness of 1 mm along the central part of the antenna following the internal profile. The radiating aperture presents instead a corona of around 17 mm diameter to reduce the effect of the radiation of the external currents. The connection between the central and radiating external parts has been realized by a smooth conical external transition. Finally, the input circular waveguide has a larger cross section, with holes for pins and screws, for the connection of the horn to the measurement

setup. An input circular waveguide length of 5 mm has been included to simplify the mounting with the measurement setup.

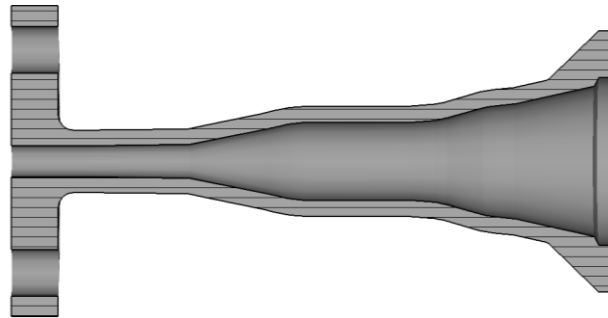


Figure 3. CAD model of the smooth wall horn of **Error! Reference source not found.**

3. Antenna Manufacturing and Testing

As discussed in the introduction, our intention is to understand the feasibility of PBF-LB/M process to realize microwave devices, and in particular feed horn, operating in D-band. Using the EOSINT M270 Dual Mode, three prototypes have been manufactured exploiting the classical AlSi10Mg alloy. **Error! Reference source not found.** reports a picture of the three antennas. From the CAD model shown in **Error! Reference source not found.**, these horns present some differences from a mechanical point of view. The first two (horn A and horn B), indeed, are quite similar to the CAD model except for a small difference related to a conic loft in the connection region between the input flanges and the central body of the horn. We have applied this expedient to guarantee more robustness to the part. The almost conical shape of smooth wall horn permits, indeed, quite neat shape solution but some trade-offs on the external shape are necessary to avoid warp/collapse during the manufacturing and post-processing procedure. In the case of Horn C, we have considered a bulky solution to understand if it could improve the manufacturing quality of the part. We have applied a stress relieving of 2h at 300 deg for all the prototypes as well as a shot peening with glass microsphere using a pressure of six bar [19]. This is an essential step to enhance the conductivity of the internal channels and, therefore, reducing the insertion loss.

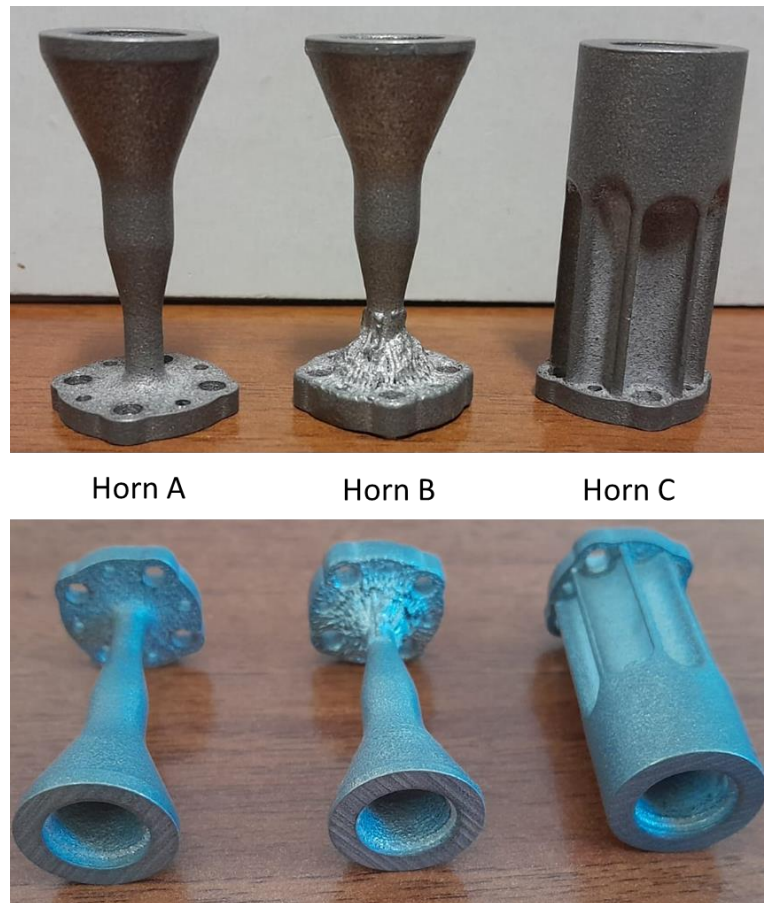


Figure 4. Pictures of the realized feed horns prototypes in PBF-LB/M/AlSi10Mg.

The measurement setup for the electromagnetic characterization of the feed horns is composed by a Vector Network Analyzer (VNA) (PNA-X N5245B) connected to a commercial transition from square to circular waveguide where the Antenna Under Test (AUT) is joined. For the beam pattern measurement, a launcher antenna (RPG Corrugated Feed Horn WR6 Type FH-CG-140) is mounted on an optical bench and connected to the VNA. Absorber material (ECCOSORB HR-10) is used to cover all the possible reflecting surfaces in the lab.

Both the launcher and the AUT are placed on proper supports to guarantee the far field approximation and the reciprocal alignment in the case of boresight direction. In particular, the launcher has fixed support with a lab-jack. The AUT is mounted on a rotating platform that allow us a proper beam pattern characterization for each incidence angle. The propagation distance from the launcher aperture to the receiver aperture is 147 cm, that is much more of the Rayleigh distance ($2D^2/\lambda$) at 160 GHz, to ensure an almost plane illumination of the AUT in the operative bandwidth. We have used waveguide twists to perform measurements on the different planes compensating their presence using straight waveguide if necessary. **Error! Reference source not found.** reports a picture of the overall measurement setup.

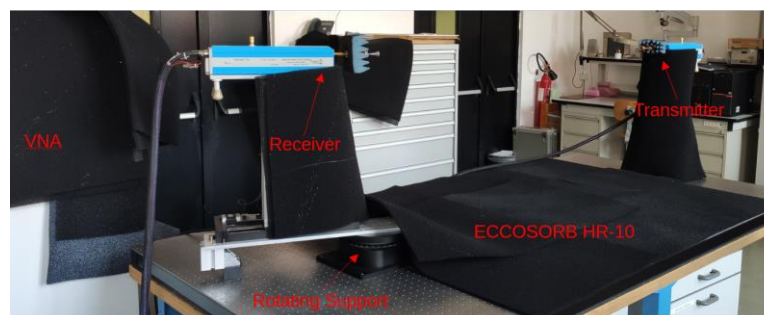


Figure 5. Picture of the measurement setup.

The measurements of the normalized co-polar radiation patterns in the E, H and D planes for the three prototypes are shown in **Error! Reference source not found.-Error! Reference source not found.** considering a 5 GHz step in the frequency range 125-160 GHz. In all the plots, the nominal radiation pattern is reported showing a very good accordance between simulations and measurements. In particular, the plots show an excellent fitting with the predicted one up to the angular range $\pm 40^\circ$, worse results can be observed at larger angles. This can be partially attributable to the accuracy of the measurement setup in terms of spurious reflections.

Unfortunately, as shown in the figures, all the three prototypes show a spurious cross-polarization level in the radiation pattern even on the principal planes where it should be nominally zero. This behavior is not uniform in frequency with worse performances at lower ones. This cross polarization component is surely the result of a spurious modal combination at the horn aperture. This combination should be composed by both circular waveguide modes with azimuthal index $m \neq 1$ and those (TE_{1n} and TM_{1n}) related to the horizontal polarization of TE_{11} mode. Note that the rectangular to circular transition is connected to the horn to excite, namely, only the vertical polarization of the TE_{11} mode. The modes with azimuthal index $m \neq 1$ can be excited if the perfect azimuthal symmetry of the horn is not maintained along the structure. These modes are below cut-off at the input waveguide, but, as the diameter increases, gradually become above cut-off and can propagate, if excited. The modes related to the other polarization of the TE_{11} mode, i.e. the horizontal one, can be present along the structure for different reasons. The first one is the not perfect connection between the horn and the transition from the rectangular and circular waveguide due to small backlash in both the screws and pins in the realized horn flange. The same polarization purity in transmission of the rectangular to circular transition can play a role on this problem by exciting a not negligible component of the horizontal TE_{11} mode. Finally, another possible concause is the not perfect concentricity of the different cross-sections along the internal channel. The verification of the first two hypothesis is quite cumbersome, while it is possible to control the last point through a mechanical nondestructive analysis on the prototypes. We discuss the details and results of this investigation in the next section.

The prototypes present an insertion loss of around 0.3dB that is compatible with an equivalent surface resistivity of 16-18 $\mu\Omega\text{cm}$. As proved in different published articles [20,21], a silver plating can be applied to reduce the metallic loss.

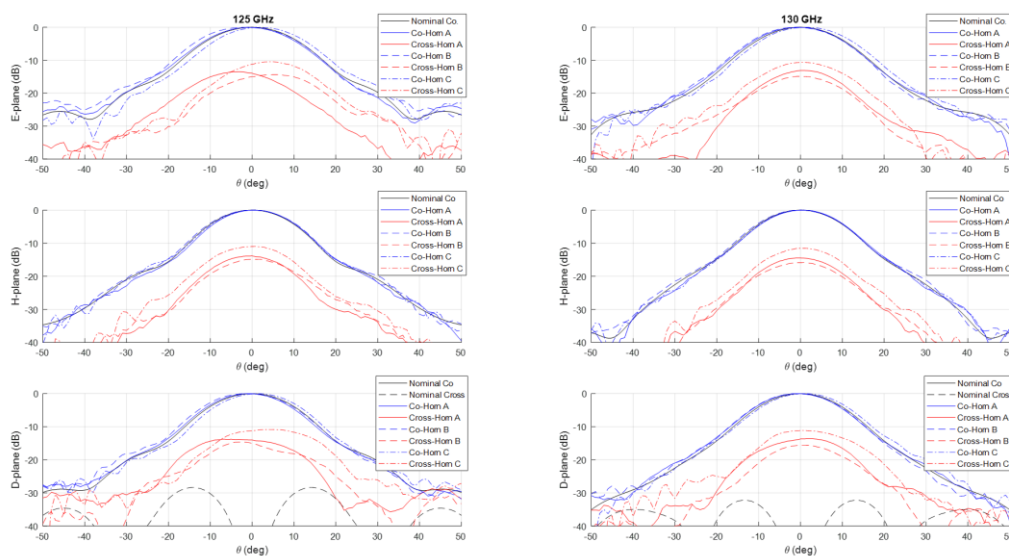


Figure 6. Comparison between nominal (in black) and measured (in blue and red) co-polar and cross-polar normalized radiation patterns in the E, H and D-planes at 125 GHz (left) and 130 GHz (right).

The plot reports the measurements on the three prototypes Horn A (continuous lines), Horn B (dashed lines) and Horn C (dashed dot lines).

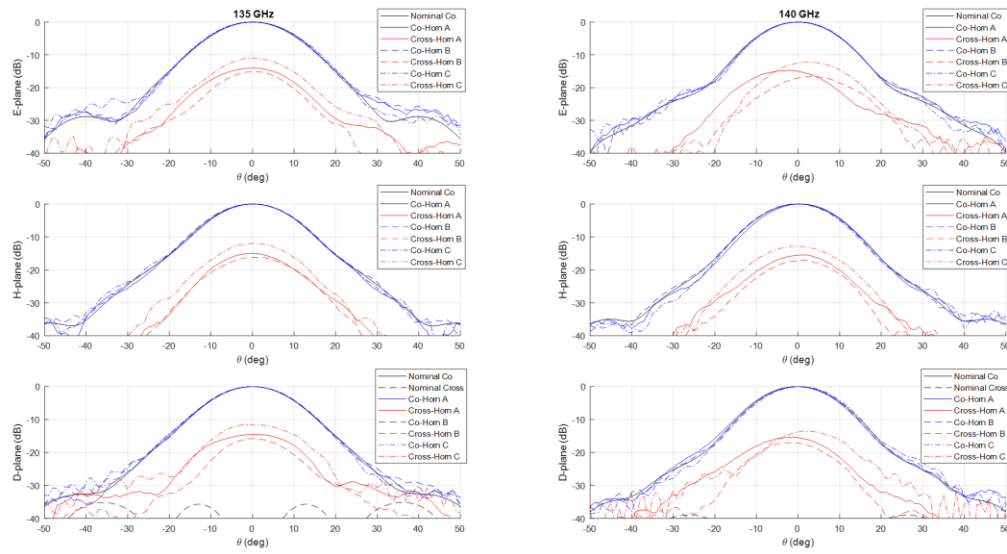


Figure 7. Comparison between nominal (in black) and measured (in blue and red) co-polar and cross-polar normalized radiation patterns in the E, H and D-planes at 135 GHz (left) and 140 GHz (right). The plot reports the measurements on the three prototypes Horn A (continuous lines), Horn B (dashed lines) and Horn C (dashed dot lines).

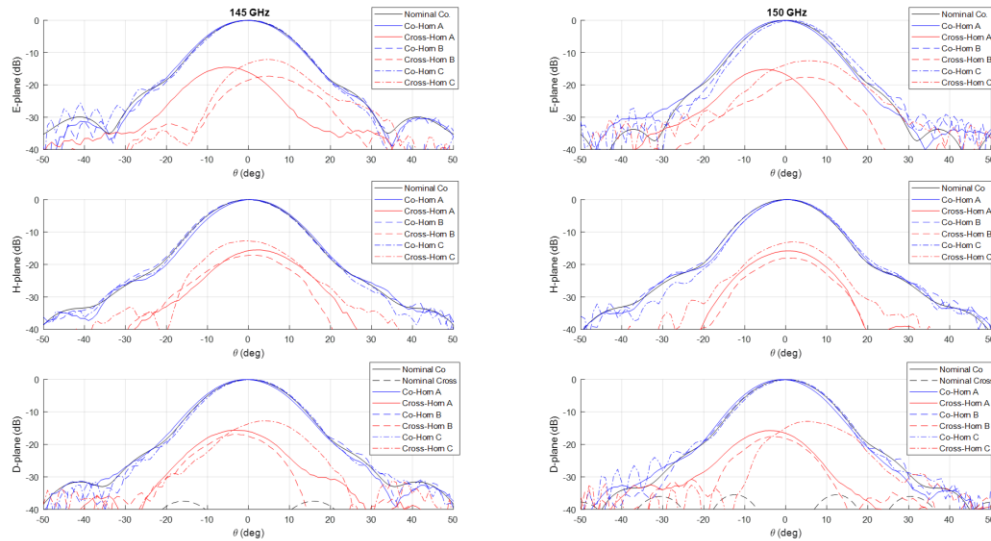


Figure 8. Comparison between nominal (in black) and measured (in blue and red) co-polar and cross-polar normalized radiation patterns in the E, H and D-planes at 145 GHz (left) and 150 GHz (right). The plot reports the measurements on the three prototypes Horn A (continuous lines), Horn B (dashed lines) and Horn C (dashed dot lines).

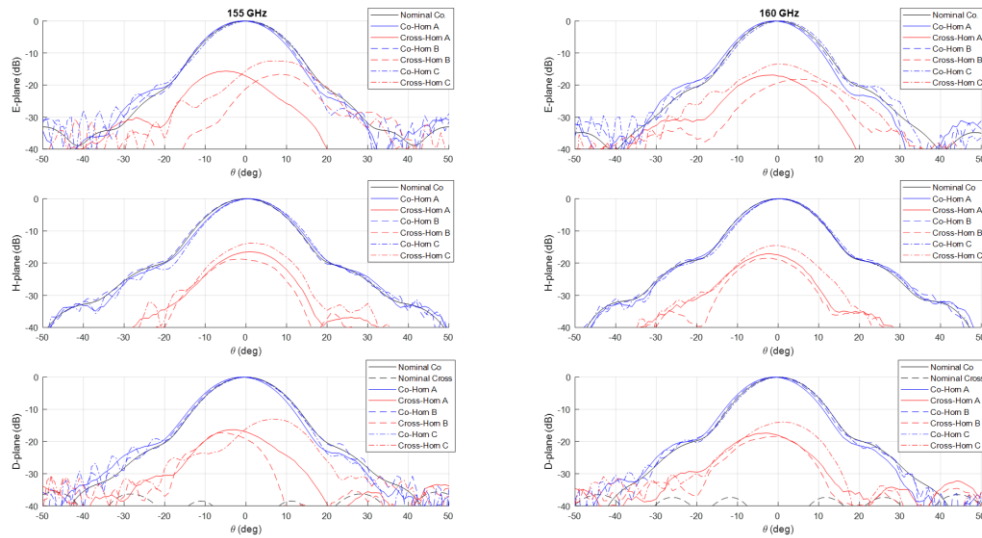


Figure 9. Comparison between nominal (in black) and measured (in blue and red) co-polar and cross-polar normalized radiation patterns in the E, H and D-planes at 155 GHz (left) and 160 GHz (right). The plot reports the measurements on the three prototypes Horn A (continuous lines), Horn B (dashed lines) and Horn C (dashed dot lines).

4. Mechanical Measurements of the Horn Prototype

We have carried out a deep investigation for better understanding the reason of the measured cross-polarization levels. To this end, we have preferred a not invasive inspection through tomographic analysis on the horns using the instrument GE Phoenix v|tome|x s. In particular, we have applied this inspection on horn A and B. In the following, we report the analysis for horn B since similar results and conclusions maintains for horn A.

During the acquisition, the tomographic scanner has acquired a set of around 470.000 3D-points. **Error! Reference source not found.** shows the 3D model generated from of this acquired data.

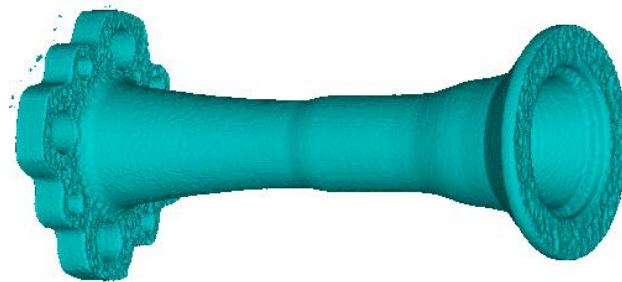


Figure 10. Result of the tomography on the horn prototype B.

Starting from this dataset, the idea is to re-construct, section by section, the realized internal channel of the horn and then compare these sections with the nominal ones. In order to maintain the highest flexibility and generality, we have exploited a numerical algorithm to deduce, for each section of the internal channel, the best fitting ellipse γ . Since the data are not uniform along the longitudinal z -axis of the horn, a discretization in steps of 0.05 mm have been applied. Note that, as well known, at least six points are necessary to define an ellipse in a plane.

The effectiveness of this numerical reconstruction is shown in **Error! Reference source not found.** where the comparison between the acquired points (in blue) and the best fitting ellipse γ (in red) is reported, as an example, in four z -sections of the horn: the input one, two centrals and one close to the radiating aperture. The good fitting shown in the plots confirms the choice of this

mathematical model. From the analytical expression of Y , we have derived, for each longitudinal section, the center position and the major (R_a) and minor (R_b) semi-axes of Y as well as the tilt of the main directions of the ellipse with respect a fixed (x, y) reference system centered at the horn input waveguide. A summary of this analysis is reported in **Error! Reference source not found.** In the plot is evident a deviation of the centers of the various Y with respect to the longitudinal axis of the horn leading to an overall drift of around 0.1 mm along the structure. At the same time, a not negligible tilting of the main axes is present. These two aspects represent surely a significant concause of the measured cross-polarization component on the radiation patterns reported in **Error! Reference source not found.** As far as the shape of the cross-section is concerned, the analysis show a good circularity with semi-axes R_a and R_b quite close (with a difference almost everywhere lower than 0.05 mm) to the nominal radius R_{nom} except in the radiating region where it is around 0.07 mm.

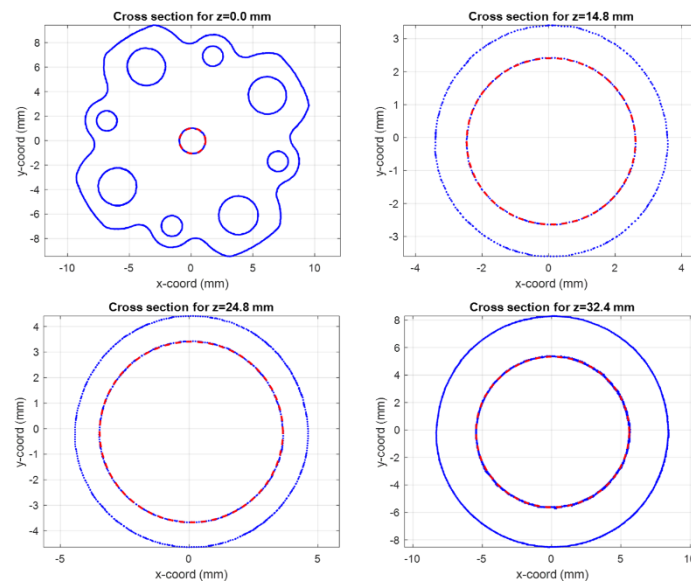


Figure 11. Cross-sections of the horn at different longitudinal coordinate z (input section: top left, central sections: top right and bottom left, close to the radiating aperture: bottom right). The blue points refer to the tomographic data, the red ones to the ellipse best fitting Y .

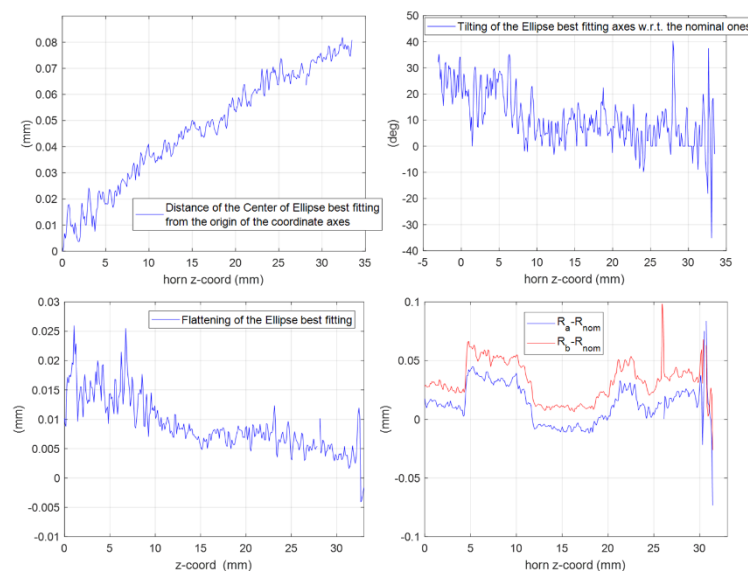


Figure 12. Results of the elaboration of the tomographic data in terms of ellipse best fitting Y along the horn sections. Top left: deviation of the center position. Top right: tilting angle of the ellipse main

axes with respect to the nominal one. Bottom left: flattening of the ellipse. Bottom right: differences between the major (R_a) and minor (R_b) semi-axes of the ellipse and the nominal radius (R_{nom}) for all the horn sections.

5. Conclusions

Despite the not excellent agreement with the desired results in terms of cross-polarization component, the nice outcomes in the measured co-polar component proves that PBF-LB/M is an interesting manufacturing technique still in D-band and it can be effectively employed for the manufacturing of single linear-polarization devices. The mechanical analysis of the horn shows the necessity of a better control, in the manufacturing process, on the absolute center position of the cross-section to reduce the observed drift. Future work will focus on both improving the manufacturing on this aspect and reducing the electromagnetic noise, in the measurement setup, for better characterizing these antennas in wide angular region. Finally, the realization of an integrated version of the horn with an orthomode transducer can be a future step to minimize the uncertainty in the multimodal connection of the horn with the transition from rectangular to circular waveguide.

References

1. L. T. Wedage, B. Butler, S. Balasubramaniam, Y. Koucheryavy, J. M. Jornet and M. C. Vuran, "Climate Change Sensing Through Terahertz Communication Infrastructure: A Disruptive Application of 6G Networks," in *IEEE Network*, vol. 38, no. 3, pp. 261-268, May 2024, doi: 10.1109/MNET.2023.3321523.
2. E. Carretti *et al.*, "The Sardinia Radio Telescope (SRT): A large modern radio telescope for observations from meter to mm wavelengths," *2017 International Conference on Electromagnetics in Advanced Applications (ICEAA)*, Verona, Italy, 2017, pp. 1739-1742, doi: 10.1109/ICEAA.2017.8065630.
3. Hamilton, J.-Ch. *et al.*, "QUBIC I: Overview and science program" in *Journal of Cosmology and Astroparticle Physics* Volume 2022, Issue 41 April 2022 Article number 034 doi: 10.1088/1475-7516/2022/04/034
4. G. Virone, O. A. Peverini, M. Lumia, M. Z. Farooqui, G. Addamo and R. Tascone, "W-Band Orthomode Transducer for Dense Focal-Plane Clusters," in *IEEE Microwave and Wireless Components Letters*, vol. 25, no. 2, pp. 85-87, Feb. 2015, doi: 10.1109/LMWC.2014.2373638.
5. C. Franceschet *et al.*, "The LSPE-Strip feed horn array" in *Journal of Instrumentation* Volume 17, Issue 1 January 2022 Article number P01029 doi: 10.1088/1748-0221/17/01/P01029
6. F. Cavaliere *et al.*, "QUBIC VII: The feedhorn-switch system of the technological demonstrator" in *Journal of Cosmology and Astroparticle Physics* Volume 2022, Issue 41 April 2022 Article number 040 doi: 10.1088/1475-7516/2022/04/040
7. P. Natoli *et al.*, "Exploring cosmic origins with CORE: Mitigation of systematic effects" in *Journal of Cosmology and Astroparticle Physics* Volume 2018, Issue 45 April 2018 Article number 022 doi:10.1088/1475-7516/2018/04/022
8. C. Leloup *et al.*, "Impact of beam far side-lobe knowledge in the presence of foregrounds for LiteBIRD" in *Journal of Cosmology and Astroparticle Physics* Volume 2024, Issue 61 June 2024 Article number 011 doi: 10.1088/1475-7516/2024/06/011
9. E. Allys *et al.*, "Probing cosmic inflation with the LiteBIRD cosmic microwave background polarization survey" in *Progress of Theoretical and Experimental Physics* Volume 2023, Issue 41 April 2023 Article number ptac150. doi: 10.1093/ptep/ptac150
10. M. Lumia, *et al.*, 'Additive Manufacturing of RF waveguide Components', in *Recent Microwave Technologies*. IntechOpen, Aug. 25, 2022. doi: 10.5772/intechopen.104106.
11. O. A. Peverini, M. Lumia, G. Addamo, G. Virone and N. J. G. Fonseca, "How 3D-Printing Is Changing RF Front-End Design for Space Applications," in *IEEE Journal of Microwaves*, vol. 3, no. 2, pp. 800-814, April 2023, doi: 10.1109/JMW.2023.3250343.
12. P. Booth, R. Roberts, M. Szymkiewicz and C. Hartwanger, "Using additive manufacturing for feed chain and other passive microwave components," *2017 11th European Conference on Antennas and Propagation (EuCAP)*, Paris, France, 2017, pp. 558-562, doi: 10.23919/EuCAP.2017.7928730.
13. S. Zhang *et al.*, "3D Antennas, Metamaterials, and Additive Manufacturing," *2019 IEEE MTT-S International Wireless Symposium (IWS)*, Guangzhou, China, 2019, pp. 1-3, doi: 10.1109/IEEE-IWS.2019.8803909.
14. A. Shama, "Additive manufactured antennas and feeds for terrestrial and space systems," *2024 International Conference on Electromagnetics in Advanced Applications (ICEAA)*, Lisbon, Portugal, 2024, pp. 1-1, doi: 10.1109/ICEAA61917.2024.10702018.

15. Y. Wang, Q. You, L. Qian and T. Skaik, "3D-Printed Millimetre-Wave Waveguide Passive Devices and Antennas," 2024 *International Conference on Electromagnetics in Advanced Applications (ICEAA)*, Lisbon, Portugal, 2024, pp. 259-259, doi: 10.1109/ICEAA61917.2024.10701752.
16. G. Addamo *et al.*, "3-D Printing of High-Performance Feed Horns From Ku- to V-Bands," in *IEEE Antennas and Wireless Propagation Letters*, vol. 17, no. 11, pp. 2036-2040, Nov. 2018, doi: 10.1109/LAWP.2018.2859828.
17. A. K. Bhattacharyya and G. Goyette, "A novel horn radiator with high aperture efficiency and low cross-polarization and applications in arrays and multibeam reflector antennas", *IEEE Trans. Antennas Propag.*, vol. 52, no. 11, pp. 2850-2859, Nov. 2004.
18. G. Addamo, O. A. Peverini, G. Virone, R. Tascone and R. Orta, "Model order reduction technique for the efficient analysis of complex waveguide structures: An application to the design of corrugated horns", *IEEE Antennas Wireless Propag. Lett.*, vol. 8, pp. 1039-1042, 2009.
19. F. Calignano, V. Mercurio, G. Rizza and M. Galati, "Investigation of surface shot blasting of AlSi10Mg and Ti6Al4V components produced by powder bed fusion technologies", *Precision Engineering*, Volume 78, 2022, pp 79-89, doi:10.1016/j.precisioneng.2022.07.008.
20. Bal A, Carey DG, Espinal FA, Huff GH. Electroless silver plating of 3D printed waveguide components by peristaltic pump driven system. *Electron Lett.* 2019; 55(2): 100-102. doi:[10.1049/el.2018.7288](https://doi.org/10.1049/el.2018.7288).
21. Peverini, O.A., Addamo, G., Lumia, M., Virone, G., Calignano, F., Lorusso, M. and Manfredi, D. (2017), Additive manufacturing of Ku/K-band waveguide filters: a comparative analysis among selective-laser melting and stereo-lithography. *IET Microw. Antennas Propag.*, 11: 1936-1942. <https://doi.org/10.1049/iet-map.2017.0151>.

Disclaimer/Publisher's Note: The statements, opinions and data contained in all publications are solely those of the individual author(s) and contributor(s) and not of MDPI and/or the editor(s). MDPI and/or the editor(s) disclaim responsibility for any injury to people or property resulting from any ideas, methods, instructions or products referred to in the content.