

Article

Not peer-reviewed version

Neuroprotective Properties of Rutin Hydrate against Scopolamine-Induced Learning and Memory Deficits in Rats

[Inturu Sreelatha](#) , [Ga-Young Choi](#) , [In-Seo Lee](#) , [Omkaram Inturu](#) , Hyun-Sook Lee , Yea-Na Park ,
Cheol-Won Lee , [SungHo Maeng](#) , [Ji-Ho Park](#) *

Posted Date: 20 August 2024

doi: 10.20944/preprints202408.1470.v1

Keywords: Rutin hydrate; scopolamine; long-term potentiation; Alzheimer's disease; synaptic plasticity



Preprints.org is a free multidiscipline platform providing preprint service that is dedicated to making early versions of research outputs permanently available and citable. Preprints posted at Preprints.org appear in Web of Science, Crossref, Google Scholar, Scilit, Europe PMC.

Copyright: This is an open access article distributed under the Creative Commons Attribution License which permits unrestricted use, distribution, and reproduction in any medium, provided the original work is properly cited.

Article

Neuroprotective Properties of Rutin Hydrate against Scopolamine-Induced Learning and Memory Deficits in Rats

Inturu Sreelatha ^{1,†}, Ga-Young Choi ^{2,†}, In-Seo Lee ¹, Omkaram Inturu ³, Hyun-Sook Lee ⁴, Yea-Na Park ⁴, Cheol-Won Lee ⁵, Sungho Maeng ¹ and Ji-Ho Park ^{1,*}

¹ Department of Gerontology (AgeTech Service Convergence Major), Graduate School of East-West Medical Science, Kyung Hee University, Yongin, 17104, Republic of Korea

² Center for Research Equipment, Korea Basic Science Institute, Cheongju, 28119, Republic of Korea

³ Department of Applied Physics and Institute of Natural Sciences, Kyung Hee University, Yongin, 17104, Republic of Korea

⁴ Department of East-West Medicine, Graduate School of East-West Medical Science, Kyung Hee University, Yongin, 17104, Republic of Korea

⁵ Convergence Healthcare Research Institute, Myong Ji University, Yongin, 17058, Republic of Korea

* Correspondence: jihopark@khu.ac.kr; Tel: +82 31 201 2187 /Fax: +82 31 204 8119

† Inturu Sreelatha and Ga-Young Choi contributed equally to this work as co-first authors.

Abstract: The current study investigated the neuroprotective effects of rutin hydrate (RH) in an Alzheimer's disease (AD)-like learning and memory impairments rat model. Since AD is an age-related degenerative brain disorder characterized by a progressive worsening in cognitive function and memory; RH may be a potential drug for the treatment of AD-like memory loss; and this work is aimed to evaluate whether RH has neuroprotective effects in memory deficits induced by scopolamine (SCO). In our study; RH demonstrated beneficial effects as a neuroprotector in the brain and improved learning; memory; and synaptic plasticity in a rat. Rats were administered RH (100 mg/kg) and SCO (1.5mg/kg); and performed behavioral tests such as Morris water navigation test; Y-maze test; and passive avoidance test to evaluate the ability of learning and memory. In accordance with these findings; RH behaviorally attenuated SCO-induced shortening of step-through latency in the PA test; increased the percent of alternation in the Y-maze; and increased the time spent in the target zone in the MWN. Moreover; the neuroprotective effect of RH on learning and memory was investigated through the long-term potential on organotypic hippocampal slice cultures. RH increased the total activity of field excitatory postsynaptic potential (fEPSP) following theta burst stimulation and attenuated SCO-induced blockade of fEPSP. This approach could potentially be used as a therapeutic strategy for the restoration of learning and memory function and the prevention of the progression of AD. SCO treatment decreased the levels of BDNF/TrkB/ERK/CREB/Bcl2 and increased the Bax protein level in rat hippocampus. RH ameliorated the expression of these proteins by attenuating SCO-induced up or downregulation in the hippocampus. Based on these findings; the results highlight the molecular and cellular mechanisms through which RH is proposed to exert its neuroprotective effects in the prevention and treatment of learning and memory deficit disorders.

Keywords: rutin hydrate; scopolamine; long-term potentiation; Alzheimer's disease; synaptic plasticity

1. Introduction

Neurodegenerative diseases (NDD), such as Alzheimer's (AD) and Parkinson's (PD) diseases, are considered common age-related motor nerve disorders of chronic and fatal illnesses, which establish a foremost danger to human health [1–3]. The proportion of the elderly population

worldwide has significantly increased in size and signifies the fourth-highest basis of disease affliction in well-developed countries of high income. These diseases advance with age and remain incurable despite a massive amount of investment in healthcare and research [4]. The common indicator of neurodegenerative diseases [5], such as AD, is a cognitive impairment that results from the accumulation of amyloid beta ($A\beta$) plaques [6] and tau protein in deceased neural cells. Thus, NDD signifies some of the greatest challenges for elementary science and clinical medicine. A pharmacological report demonstrated the use of flavonoids in neurodegenerative conditions, especially AD and PD [7,8]. Considerable efforts in evaluating the chronic evolution characterized by the damage of memory demonstrated that herbal-derived polyphenol compounds with neuroprotective potential gained importance for NDD [5]. The characteristic polyphenolic structure is owing to the free radical foragers acting as antioxidants for the responsive oxygen species [9,10], which are mostly due to the varying effectiveness and efficacy of a single flavonoid to another, rendering the amount and location of OH groups prevalent to their structure, the grade of corrosion and unsaturation, as well as other replacements and conjugations related to their elementary method [11].

Rutin hydrate (RH), a well-known flavonoid, shows promising potential and health benefits owing to its strong anti-inflammatory and anti-hypertensive effects and potent antioxidant activity. RH reduces cognitive decline in an extensive range of NDDs by protecting against 6-hydroxydopamine-induced toxicity in rodents [12]. RH was used to analyze the phenolic components and antioxidant activity of nettle to evaluate the flavonoid content in propolis [13]. RH strengthens deregulation, reduces skin aging, and regulates enzymes in the extracellular matrix [14]. The involvement of novel strategies by accepted bio-plants resulting in composites consumed as small supplements helps in the treatment of human diets with their natural food bases. Pharmacological studies demonstrated that RH and its derivatives defend dopaminergic neurons and alleviate apoptosis, astrogliosis, and oxidative stress 6-hydroxydopamine persuaded rodents of PD [15]. Autophagy activity has been studied in numerous models of $A\beta$ -linked pathology to reverse Huntington's disease by the insulin-like growth factor 1/insulin signaling pathway of RH. RH improves spatial memory and reduces the $A\beta$ oligomer levels and neuroinflammation in a PS1/APP rat model of AD [16].

Scopolamine (SCO), a muscarinic receptor blocker, is a well-established tool for the pharmacological study of cognitive impairment in learning and memory in animals and humans. SCO administration causes cholinergic dysfunction, upregulation of tau proteins, a decrease in acetylcholine level, increased amyloid beta deposition, and induces cognitive disorders in Alzheimer's disease [17]. Chronic SCO behavior also disrupts long-term memory retention in hippocampal brain-derived neurotrophic factors (BDNF) and cAMP response element-binding protein (CREB), which play significant roles in the regulation of the nervous system [18–20]. The neuronal transmission of long-term potentiation (LTP) involves postsynaptic function, and plasticity intensifies the regulation from a few hours to numerous weeks and, subsequently, the tedious electrical stimulus of synaptic nerves [21,22]. The N-methyl-D-aspartate receptor (NMDAR) generally induces LTP through the pathway for glutamate, which is covertly associated with hippocampal activity and facilitates learning and memory [23]. LTP has consequently been explored for assessing the function of cognitive synaptic mechanisms [24] by inducing cortical excitability changes using the rhythmically occurring theta burst stimulation (TBS) pattern, which improves the synaptic strength of neural networks.

This study primarily seeks to investigate the potential neuroprotective capacity of RH alone or in conjugation with SCO to induce neurotoxicity and cognitive impairment in rodents. RH seemed to improve spatial memory function by boosting the endogenous antioxidant pathway, activating cell viability, and improving apoptotic potential, which was more precise than when RH was conjugated with SCO. The neuroprotective effects of RH on learning and memory impairment induced by SCO were evaluated first by extensive electrophysiological assays using recently advanced microelectrode array (MEA) measurement methods. Second, we assessed and evaluated the hypothesis of short-term and long-term memory associated with well-established tests of rodents,

such as the Y-maze task, passive avoidance (PA) test, and Morris water navigation task (MWN). Besides, we also evaluated the association of neural signaling pathway-related protein levels in rodent hippocampal tissue to understand biological brain aging and reduce the risk of cognitive impairment, which was attributed to the positive effect of RH on NDD. Therefore, these results outline future opportunities and challenges associated with the use of RH as a promising neuroprotective compound for the treatment of NDD, such as AD.

2. Materials and Methods

2.1. Materials

Rutin hydrate (RH) and scopolamine (SCO) were purchased from Sigma-Aldrich (USA, MO, St. Louis). 4-(2-hydroxyethyl)-1-piperazineethanesulfonic acid (HEPES), dimethyl sulfoxide (DMSO), L-glutamine, Calcium Chloride (CaCl₂), D-glucose, potassium chloride (KCl), magnesium chloride (MgCl₂), sodium bicarbonate (NaHCO₃), and sodium chloride (NaCl) were acquired from Sigma-Aldrich (USA, MO, St. Louis). Hank’s balanced salt solution (HBSS) and Minimum essential medium (MEM) were purchased from the company Welgene Inc. (Gyeongsan, ROK). The heat inactivated (HS) donor horse serum was obtained from Biowest in Nuaillé, France. Penicillin-streptomycin was obtained from Gibco BRL (Rockville, MD, USA). All the reagents were research-grade products.

2.2. Animals

Adult male Sprague-Dawley (SD) rats with an average body weight of 130 ± 10 g were purchased from Saeron Bio, Inc. (Uiwang, Korea). A total of 48 male SD rats were randomly assigned to 4 groups (Control, SCO, RH, SCO+RH) for in-vivo experiments, with each group comprising 12 rats. Among these 10 rats, 7 were allocated for behavioral tests, while the remaining 5 were designated for molecular analysis. All the rats were kept in cages in a 12/12-h (lights on/off 08:00 am/pm) light/dark cycle at a moisture level of 60 ± 5% and room temperature of 23 ± 1°C in controlled atmosphere storage rooms. The individual cages housed two rats to ensure sufficient space among them; they were provided with tap water and a regular standard diet (Saeron Bio, Inc. Kyunggi-do, ROK) ad libitum during the course of the experiments. The experiments on the laboratory animals were carried out in a safe zone under the care guide of the committee of the Care and Use of Kyung-Hee University (KHGASP 19-337), which was approved by the supervisory principles of the Council of the National Institutes of Health Guide for the Care and Use of Laboratory Animals. Nearly all care was initiated to minimize the pain/distress experienced by all the laboratory animals to reduce the number of their use.

2.3. Experimental Procedure

RH was administered per oral (p.o.) at a recommended dose of 100 mg/kg/day, p.o. body weight [25–27] and SCO was administered by intraperitoneal injection (i.p.) at 1.5 mg/kg/day, i.p. body weight of the recommended dose [28]. The rats were arbitrarily divided into four groups (Table 1). Rats were adapted for 5 days, and then RH treatments were administered for total 15 days and SCO treatments were administered for 10 days for the behavioral tests. RH was administered p.o. for 60 min, and SCO i.p. was injected for 30 min before each test. For 8 consecutive days, the responses of behavioral testing for all the pretreatment were evaluated with 7 rats of each group. The rats were sacrificed on the last day (Figure 1).

Table 1. Animals grouping and experimental schedule.

Groups	Subjects	Treatment
Group 1	control	PBS 1 ml
Group 2	SCO treated	SCO 1.5 mg/kg/day, i.p.
Group 3	RH	RH 100 mg/kg/day, p.o
Group 4	SCO + RH	SCO 1.5 mg/kg/day, i.p. + RH 100 mg/kg/day, p.o.

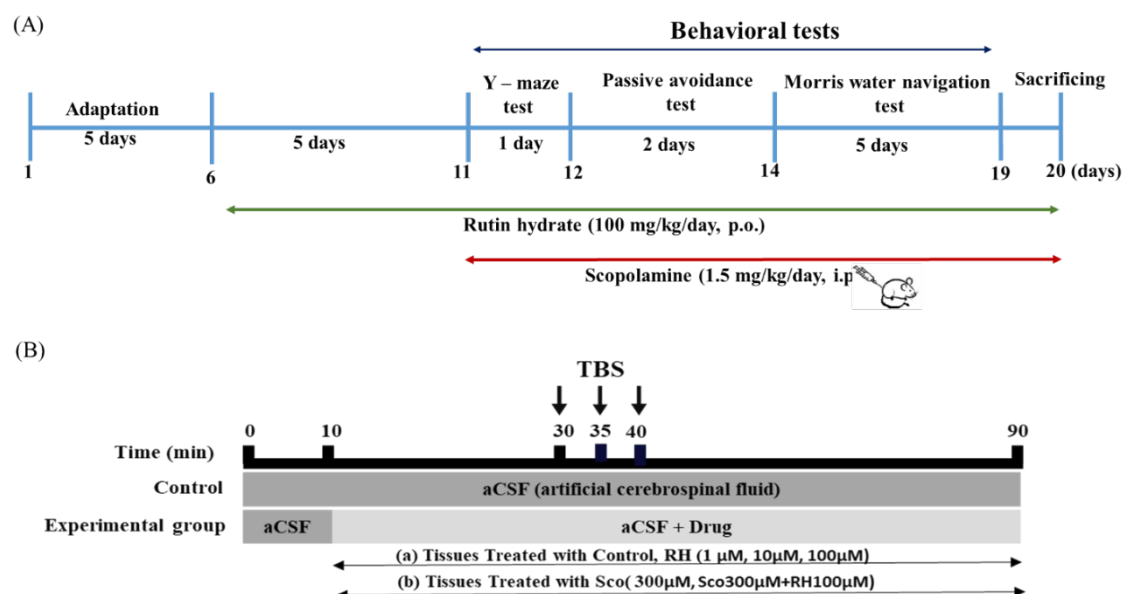


Figure 1. Experimental schedules for rutin hydrate effects. (A) Time schedule of for behavioral tests. RH treatments were administered for total 15 days Following pre-treatment, RH and SCO treatments were administered for 10 days for the behavior-al tests. Y-maze test, passive avoidance test and Morris water navigation test were per-formed for 8days. (B) Time schedule for electrophysiological tests. The organotypic hippocampal slices were treated with 300 μ M SCO and RH (1, 10 100 μ M) along with aCSF. Each experiment was executed a total of 90 min and consisted of 30 min of base-line recording of fEPSP at one stimulation per min, 10 min of TBS, and 50 min of post-TBS fEPSP measurements. SCO, scopolamine; RH, routine hydrate.

2.4. Hippocampal Slice of Organotypic Cultures (OHSCs)

The hippocampal slices of organotypic cultures (OHSCs) were arranged with Interfaces defined in the studies [29] using seven-day-old male SD (Sprague-Dawley) rats procured from Saerone Bio Inc (Uiwang, South Korea). The brain was dissected quickly by immediately immersing it in a cold HBSS medium with 20 mM of HEPES. Further, the hippocampal slices were enucleated and sectioned into 350 μ m-thick slices, which uses a tissue chopper (Mickle Laboratory Engineering Co.Ltd, Gomshall, UK) to rapidly make acute cerebellar slices from rats. Six slices were plated on top of 0.4 μ m membrane of insert (CM-Millicell; Millipore, Bedford, MA, USA) in 6-well cultured plate and maintained at 35 °C with 5% CO₂ in an incubator. The six well was filled with 1 mL of MEM -50%(v/v) culture medium (Heat-Inactivated Horse serum; 25%(v/v), HBSS; 25%(v/v), supplemented with 20 mM HEPES, 5.25 g/L D-glucose, 1 mM L-glutamine, and 1% penicillin-streptomycin, pH = 7.1). On every second day, the culture medium was changed, and the hippocampal slices were grown for days (12-14) in an incubator kept at 35°C and then used for the experiments.

2.5. Preparation of Organotypic Hippocampal Slice Tissue on Microelectrode Array (MEA)

Solitary stabilized hippocampal portion tissue remained prudently isolated after a membrane of the inset through a brush & positioned on a MEA 8×8 of ten (10) μ m thickness electrodes which remained pre-coated with polyethyleneimine of 0.01% (Multi-Channel Systems, Reutlingen, Germany). The multi-channel systems contain an amplifier with an array of high-density electrodes (MEA1060), stimulator (STG1004), computer software (MC_Rack) and controlled temperature unit. All the sliced tissues were steadied in artificial cerebrospinal fluid (aCSF, pH 7.4) containing 114 mM NaCl, 25 mM NaHCO₃, 25 mM glucose, 3 mM KCl, 2 mM CaCl₂, 1.3 mM MgCl₂, 20 mM HEPES and 1.1 mM NaH₂PO₄ for 30 min with 95% O₂ and 5% CO₂ gas aeration at 33°C. The hippocampus tissue slice was transferred to an amplifier interface (MEA1060) and stabilized perfectly with the help of an Ag/AgCl pellet. The channel of stimulation was excluded after recording the stimulation process [30].

2.6. Induction of Long-Term Potential (LTP) in Hippocampal Slices

The point of inducing the Schaffer collateral and commissural pathway was chosen based on morphological examination of hippocampal tissue and appropriate response to bipolar electrical stimulation. As a result, it was applied to the hippocampus CA 3 region and was placed in a Faraday cage. The intensity of bipolar stimulation was set at 160 μ A and applied to 240 ms per phase, and the optimum level was required to produce 40–65% of the maximum hippocampal tissue reaction. Theta burst stimulation (TBS) consisted of 300 biphasic pulses administered in three trains of 100 Hz for 1 sec with 5 min intervals [31]. Each experiment of LTP induction was performed for a total of 90 min, consisting of 30 min of field excitatory postsynaptic potential (fEPSP) record, 10 min of TBS, and 50 min of post-TBS fEPSP measurement once per min. During experiments, the slices were continuously infused with fresh aCSF bubbled with 95% O₂ and 5% CO₂ at a rate of 3 mL/min and were treated with Control, RH (1, 10, 100 μ M), SCO (300 μ M), and SCO (300 μ M)+ RH (100 μ M) from 10 min after the start of recording. All unfiltered data were sampled from 60 recording channels at 25 kHz using the recording system of MC_Rack (v.3.2.1.0, Multi-Channel Systems, Reutlingen, Germany).

2.7. Y-Maze Task

The Y maze task is valuable in assessing short-term working memory in rodents. An apparatus consisted of a Y-shaped maze of black polypropylene walls with three opaque arms spread 120° apart (10 × 45 × 35 cm). The arms were labeled as “A”, “B” and “C”, and the rat was placed at the intersection of three arms and allowed to move freely for 10 min without the presence of stimuli such as water or food. Entry into an arm was recorded if all four paws of the rats were inside the arm. Spontaneous alternation performance is defined as visiting three different arms consequently in ABC, ACB, BCA, and BAC orders. Alternative arm return is defined as visiting other arms and re-turning to the same arm, such as ABA, ACA, BAB, BCB, CAC, and CBC orders. When the rat entered the three arms consecutively, spontaneous alternation was recorded, and the following formula was used to calculate the percentage of spontaneous alternation [32]: $[(\text{number of spontaneous alternations})/(\text{total number of arm entries} - 2)] \times 100$.

2.8. PA Test

The PA test is a distress intensified test, which is used to assess the effect of chemical entities on learning and memory and study the mechanism and substantial influence on the cognitive processes in rodents [33]. The PA shuttle box chamber consisted of equal-sized light and dark compartments (17 cm × 12 cm × 15 cm) separated by a black guillotine gate (9 cm × 17 cm), which was kept open to allow passage. The floor was designed using steel gratings with a 2.5 mm diameter and connected to an electric shock stimulator, which transports electricity to the grid floor in the dark compartment. The experiment comprised two different trials: a training session for the acquisition of fear, and a retention session for detecting whether the memory of fear remained. During the training session, a rat was placed in the light compartment and left for 60 s after the middle gate was opened until the rat passed into the dark compartment. The following day, when four feet of the rat were inside the dark compartment, the door was suddenly closed, and a mild electric shock (1.5 mA, 50 Hz, 1.5 s) was delivered. The rat was then removed from the dark chamber and returned to the cage for 20 s. The retention and fear memory periods were performed 24 h and 72 h after the training sessions. Rodents will learn to associate certain properties of the chamber with the foot shock; they are subsequently placed back to test their learning and memory, and placed back in the compartments where no shock was delivered. Rodents learn to avoid electrical shocks by entering the adjacent compartment using normal learning and memory [34]. During a retention session, a rat was once again positioned in the light chamber for 60 s, and the step-through latency time to enter the dark chamber was measured up to a cut-off time of 600 s.

2.9. MWN Task

The MWN task evaluates long-term spatial learning and memory using distal cues to navigate from the starting locations around the perimeter of an open water tank to locate a submerged escape platform for finding and measuring its ability [35]. A circular water tank (Diameter -180 cm × Height-45 cm) was filled with pure water ($25 \pm 1^\circ\text{C}$) to a depth of 35 cm and rendered opaque by adding non-toxic white paints. A platform for escape was positioned randomly on one of the four quarters divided into an equal size of the tank and kept hidden by a 1 cm submersion underneath the surface of the water. Four visual arts with different shapes were randomly assigned to the north- south-east-west quadrants of the tank. All the rats were trained for four days in different quadrants at each session. Visible platform training followed for four days, starting at four different regions of the water tank each day. During the training period, the latency required to reach the underwater platform was recorded. If the rat failed to find the platform within 60 s, the rat was allowed to rest on the platform for 20 s. If the rat failed to locate the platform within 60 s, the experimenter guided the platform passively and allowed them to remain on the platform for 20 s. During the test period, navigation was carried out for the rats that were allowed to navigate for 90 s without a platform. The total experimental work was recorded by an SHC-650A video camera (Samsung, Suwon, Korea) located directly above the water tank. Moreover, the results of detecting a navigation path, latency to trace the platform, remaining time, and extra parameters were assumed using the SMART v30 video tracking software of Panlab Harvard Apparatus, Barcelona, Spain.

2.10. Western Blot

Dissected brain tissues from rats in the Normal Control, SCO, RH, SCO + RH groups were analyzed by western blotting. Subsequent to the behavioral tests, the hippocampus was homogenized in the pre-cooled RIPA buffer to prepare a complete all-in-one cocktail containing both phosphatase and a complete protease inhibitor. The homogenized tissues were incubated on ice with a shaker for 60min and the supernatant was obtained by centrifuging the solution at 14,000 rpm, 4°C for 20 min. The measured Protein concentrations at a wavelength of 562 nm of supernatants was quantified by a Bradford protein assay [36] and equivalent quantities (10 μg) of protein remained partitioned on an electrophoresis with ten percent SDS-PAGE gel, the divided proteins gels were directly transferred onto PVDF membranes. All the membranes were incubated in 5% skim milk for 60 min and then treated with main antibody overnight at 4°C with agitation. Rabbit anti-BDNF (ab108319, abcam, Cambridge, UK), monoclonal antibody against extracellular signal-regulated kinase (ERK, ab184699), phospho-ERK (ab201015), CREB (ab32515), phospho-CREB (ab254107), Tropomyosin receptor kinase B (TrkB, ab18987), phospho-TrkB (ab229908), B-cell lymphoma 2 (Bcl2, ab59348), and Bcl2 associated X protein (Bax, 2772S, Cell Signaling Technology Inc, MA, USA) were used for the experiments. After incubating with first antibody, the membrane was incubated for 60min at room temperature with 5% skim milk containing secondary anti-body such as goat anti-rabbit (7074S, Cell Signaling Technology Inc, MA, USA), IgG conjugated to horseradish. After a final wash step, the membrane was incubated with an appropriate enzyme substrate to generate a recordable signal with EzWestLumi plus ECL solution (WSE-7120S, ATTO Co., Tokyo, Japan) using a system of the task of detecting instances with Ez-Capture II (ATTO Co., Tokyo, Japan). All experiments were repeated triplicate and above with different biopsy-sized tissue for its findings are more reproducible.

2.11. Electrophysiology Data Processing

All data were sampled from 60 recording channels at 25 kHz using the Recorder-Rack software. The data consisting of analog MEA signals with MC_Rack (v.3.2.1.0, Multi-Channel Systems, Reutlingen, Germany) were converted to digital form, of which EPSPs over 80 mV were selected using the trigger mode. To stimulate and integrate the evoked field potential trajectory, a custom MATLAB program (v.7.0.1, Mathworks, Inc., MA, USA) was used to eliminate stimulus artifacts [37,38].

2.12. Statistical Analysis

Statistical analysis was performed using a well-known software SPSS (version 25.0, IBM SPSS Statistics Inc., IL, USA), and significant changes in the mean values were investigated with the help of a one-way analysis of variance (ANOVA) with least significant difference (LSD) post- hoc test ($p < 0.05$). All data are expressed as mean \pm standard error of the mean (SEM).

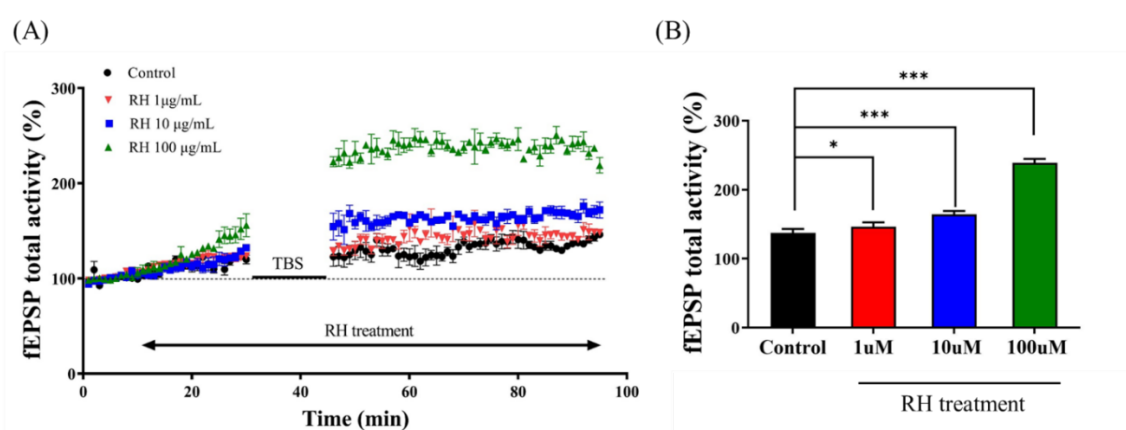
3. Results

3.1. RH Enhances fEPSP Activity of LTP in the CA1 Region of Hippocampal Slices

The primary objective was to investigate the dose dependence of RH treatment (1, 10, and 100 μ M) on LTP of the CA1 hippocampal region and assess the hypothesis that RH enhances synaptic plasticity. The time-interval percentage change in fEPSP activity (Figure 2A) and change in the activity of fEPSP, the percentage of the mean from 30 to 40 min after post-TBS (Figure 2B) were calculated for data analysis [$F(3, 12) = 277.237$, $p < 0.001$]. The total fEPSP activities of the 1 μ M RH group ($p < 0.05$) were slightly different from those of the control group. The post-TBS -average activity of fEPSP between 30 and 40 min demonstrated that the 1 μ M RH was higher than that of the control group ($p < 0.05$). In the 10 μ M RH group, the total activities of fEPSP and average post-TBS activity of fEPSP from 30 to 40 min were both increased and associated with the control group ($p < 0.001$). Furthermore, in comparison with the control group, the total activities of fEPSP and average post-TBS time of 30-40 min fEPSP activity for the 100 μ M RH group were increased ($p < 0.001$).

3.2. RH Alleviates Impairment of LTP Induction by SCO in the CA1 Region of Hippocampal Slices

Second, the impact of RH on SCO-induced LTP impairment was examined in the SCO and SCO+RH groups. Tissue from each group was treated with 300 μ M SCO and 300 μ M SCO + 100 μ M RH. The total activity of fEPSP in the SCO group was favorably lower than that of the control (Figure 2C). In contrast, the SCO+RH group demonstrated increased SCO levels. The average post-TBS activity of the fEPSP assessment from 30 to 40 min in each group was different [$F(3, 16) = 433.605$, $p < 0.001$]. The SCO group demonstrated reduction compared against the experimental group of control average post-TBS activity of fEPSP ($p < 0.001$). The average post-TBS fEPSP activity rate of the SCO+RH ($p < 0.001$) group improved compared to the SCO group ($p < 0.001$), which was near to the value of control group. These results indicate that RH improved LTP dominance induced by SCO (Figure 2D).



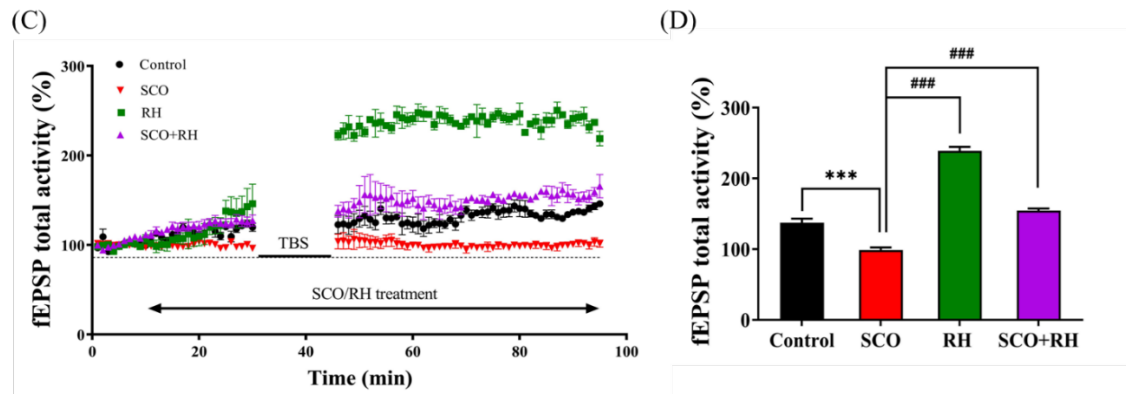


Figure 2. Effect of RH on LTP in the rat hippocampus (n=5) group. (A) Time course of total fEPSP activity percentage variation induced by TBS during the treatment of RH in the organotypic-cultured hippocampus. (B) Average of fEPSP total activity 30 to 40 min post-TBS during the dose-dependent treatment of RH (1, 10, and 100 μ M). Value of 10 μ M ($p < 0.001$), value of 100 μ M ($p < 0.001$) versus a control group. (C) Time course of total fEPSP activity percentage change induced by TBS during the treatment of SCO versus SCO+RH in the organotypic cultured hippocampus. (D) Average of fEPSP total activity 30–40 min following TBS during the treatment of SCO and SCO+RH. Upper panels of (A) and (C) show superimposed original traces recorded in typical experiments at representative time-points: before (black middle line) and between 30–40 min following TBS induction in control, SCO, or SCO+RH treated slices ($p < 0.001$), versus control group, ($p < 0.001$), versus SCO group. Significant values between the pairs of groups examined by one-way ANOVA in SPSS analysis of LSD variance statically significant difference test. SCO, scopolamine; RH, routine hydrate.

3.3. RH Amends Spatial Learning Short-Term Memory Deficits in the Y-Maze Task

The Y-maze task determined the effect of RH on spatial memory and learning impairment in SD rat models; the alternation behavior test was performed using the Y-maze. The results indicated that the ratio of spontaneous alternation in each group was significantly different [$F(3, 16) = 7.348$, $p < 0.01$; Figure 3A]. The SCO group demonstrated decreased behavioral alterations compared with the control group ($p < 0.01$). The percent of alteration in the Y-maze was significantly above chance level (50%) in control but not in SCO group. Meanwhile, the RH ($p < 0.001$) and SCO+RH groups significantly increased ($p < 0.05$) compared with the SCO group. The RH and SCO+RH groups alternated at levels that were above chance (50%). There was no change in the total number of maze arm entries [$F(3, 16) = 0.710$, $p < 0.560$, (Figure 3B)], which indicates that the differences in behavioral alternation had no spectacular influence on locomotor activity for spatial memory.

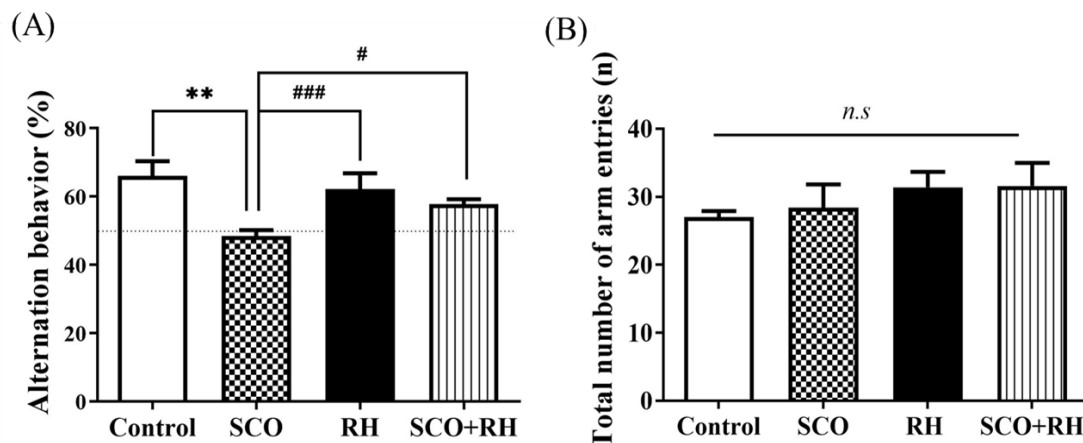


Figure 3. (A) The properties of RH on SCO-induced spatial memory effect in Y-maze (n=5). The proportion of spontaneous alternations in Y-maze test was calculated. Data are presented as mean \pm

SEM and $**p < 0.01$ vs. control group, $*p < 0.05$ and $***p < 0.001$ vs. SCO group. (B) Total number of maze arm entries into 3 arms. No significant differences were observed between all the groups. Final data are expressed as mean \pm SEM. Note that non-significant (*n.s*) differences observed in any of the parameters among the groups. Significant values between the pairs of groups examined by one-way ANOVA in SPSS analysis of LSD variance statically significant difference test. SCO, scopolamine; RH, routine hydrate.

3.4. RH Enhances Long-Term Spatial Learning & Memory Deficits in the MWN Task

The MWN task was used to assess the effects of RH on SCO-induced long-standing spatial learning and memory deficits in an SD rat model by MWN pool experiment. The rats were trained in the MWN task for four trials per day for four consecutive days (Figure 4A). The escape latency demonstrated deterioration over the training days in all the groups [$F(3,16) = 3.526$, $p < 0.05$]. In the SCO group, the latency was markedly longer than that in the control group on all the training days ($p < 0.05$). After 4 days training session, a test was conducted to check the time spent in the located platform quadrant [$F(3, 16) = 15.806$, $p < 0.001$, Figure 4B]. Rodents in the control ($p < 0.01$) group and RH/SCO groups spent more time in the target quadrant, while SCO treatment significantly reduced ($p < 0.01$) time in the target quadrant. In the RH ($p < 0.001$) group and SCO+RH co-treated rats, the target zone time demonstrated a significant ($p < 0.05$) increase in the locomotor activity of the SCO group. In the comparison of distance to the platform, the SCO group showed an increase compared to the control group ($p < 0.05$). However, the SCO+RH group exhibited a reduction in comparison to the SCO group ($p < 0.05$, Figure 4C). There was no discernible difference in average speed across the groups (Figure 4D). The results of the MWN test demonstrated that learning and memory capabilities could be impaired by SCO; however, RH ameliorated this impairment.

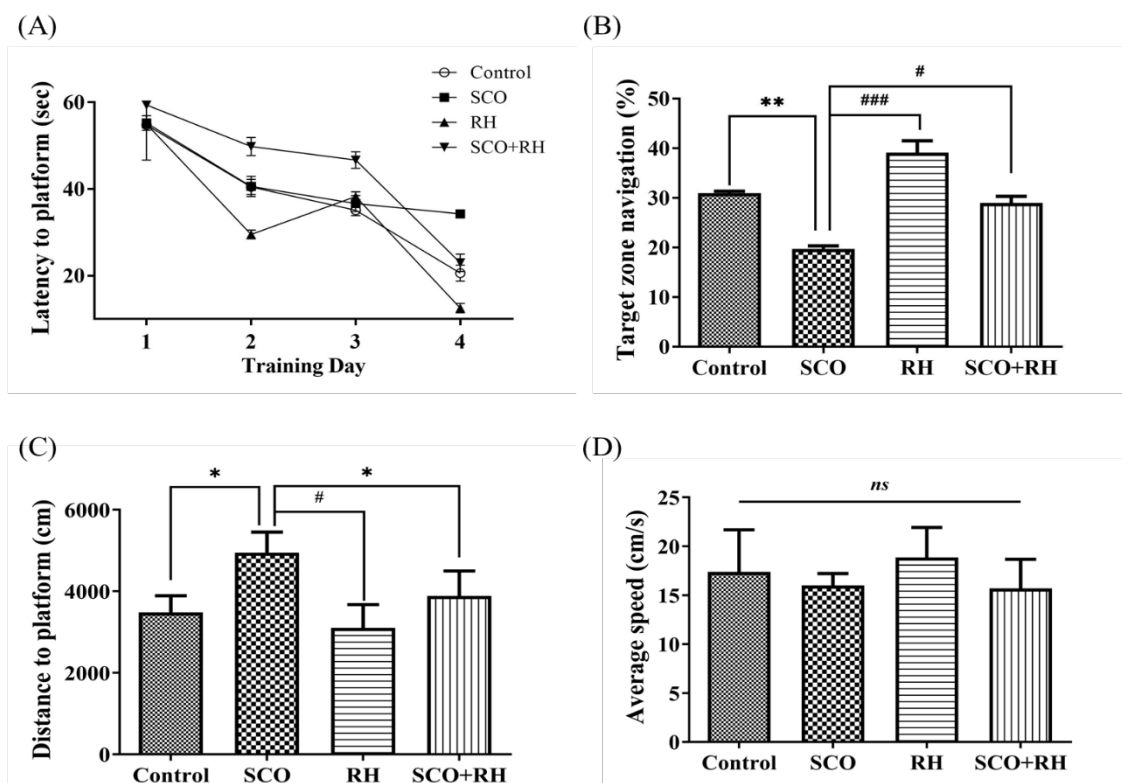


Figure 4. The result of RH on long term spatial learning and memory in the MWN task. (A) Escape latency to the concealed platform during 4 days of training. (B) Percentage of time spent in the target zone during the test session. (C) Mean distance to platform in the test session. (D) Average speed during the test session. All the data are presented as mean \pm SEM, $n = 4$, $*p < 0.05$, $**p < 0.01$ vs. control,

* $p < 0.05$, *** $p < 0.001$ vs. SCO. The values are examined by one-way ANOVA in SPSS with post-hoc LSD test. SCO, scopolamine; RH, routine hydrate.

3.5. RH Ameliorates Fear Avoidance Learning and Memory Deficits in the PA Test

The PA test examined the effect of RH on SCO-induced learning and memory deficits in SD rat models, the fear-avoidance memory test was performed as shown in Figure 5. The rats received a trial session for the acquisition of fear and a retention session of the PA test following the Y-maze task. In the trial session, no significant differences were observed in the latency to enter the dark room of the passive avoidance apparatus compartment between all the groups [$F(3, 16) = 0.827$, $p = 0.504$]; no significant differences were observed between most of the outcome groups with electrical shock. In the 24 h retention session, which was tested following the trial session [$F(3, 16) = 267.055$, $p < 0.001$], the SCO treatment group show a significant reduction compared to the control group in the step-through latency of the retention test ($p < 0.001$). The RH group ($p < 0.001$) and SCO+RH group demonstrated significant increase compared with the SCO group ($p < 0.001$). These findings revealed that SCO interrupts passive avoidance memory preservation and RH improves the retrieval of SCO-induced insults.

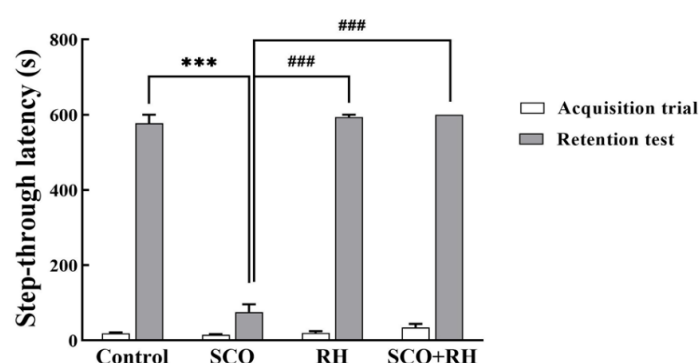


Figure 5. The results of RH on the step through latencies on the SCO induced SD rats in the trial session of the avoidance task; the rats were trained to adapt to the step-through avoidance apparatus. When the rats entered the dark room compartment, they received an electrical shock. The 24 h retention session was conducted after the training session. The following considerations examined the latency to entering the dark room compartment. Final data are presented with $n=5$, mean \pm SEM, *** $p < 0.001$ vs. control, ### $p < 0.001$ vs. SCO group, followed by the post-hoc statistically significant difference test analyzed by LSD one-way ANOVA. SCO, scopolamine; RH, routine hydrate.

3.6. RH Upregulates BDNF, Tropomyosin Receptor Kinase B (TrkB), Extracellular Signal-Regulated Kinase (ERK) and CREB Expression in the Hippocampus of SCO-Induced SD Rat Model

Western Blotting was performed to determine the effect of RH on the hippocampal BDNF-TrkB-CREB pathway (Figure 6). Considering the expression levels of BDNF [$F(3, 16) = 5.402$, $p < 0.01$, Figure 6A], the SCO group demonstrated a significant decrease compared to the control group ($p < 0.01$). Meanwhile, RH co-treatment caused an increase compared to that in the SCO group ($p < 0.05$). The p-TrkB/TrkB expression level in the SCO group ($p < 0.01$) signaling shows a downregulating compared to the control group [$F(3, 16) = 5.008$, $p < 0.01$, Figure 6B]. Besides, the RH group and SCO+RH group increased in the signal level of TrkB in comparison to the SCO group ($p < 0.01$). The expression level of p-ERK/ERK in the SCO group was significantly downregulated compared to the control group ($p < 0.001$), as indicated by the signaling [$F(3, 16) = 32.1$, $p < 0.001$, Figure 6C]. In addition, both the RH group and the SCO+RH group exhibited a higher signal level of p-ERK/ERK compared to the SCO group ($p < 0.001$). In order to the p-CREB/CREB expression [$F(3, 16) = 14.6$, $p < 0.01$, Figure 6D], The range of the SCO group is remarkably reduced related with the control group ($p < 0.05$). However, when SCO+RH was treated, the protein level of p-CREB/CREB increased

significantly relative to the SCO group ($p < 0.05$). These results support the possibility that RH treatment would improve the activation of the BDNF-TrkB-ERK-CREB pathway in the hippocampus.

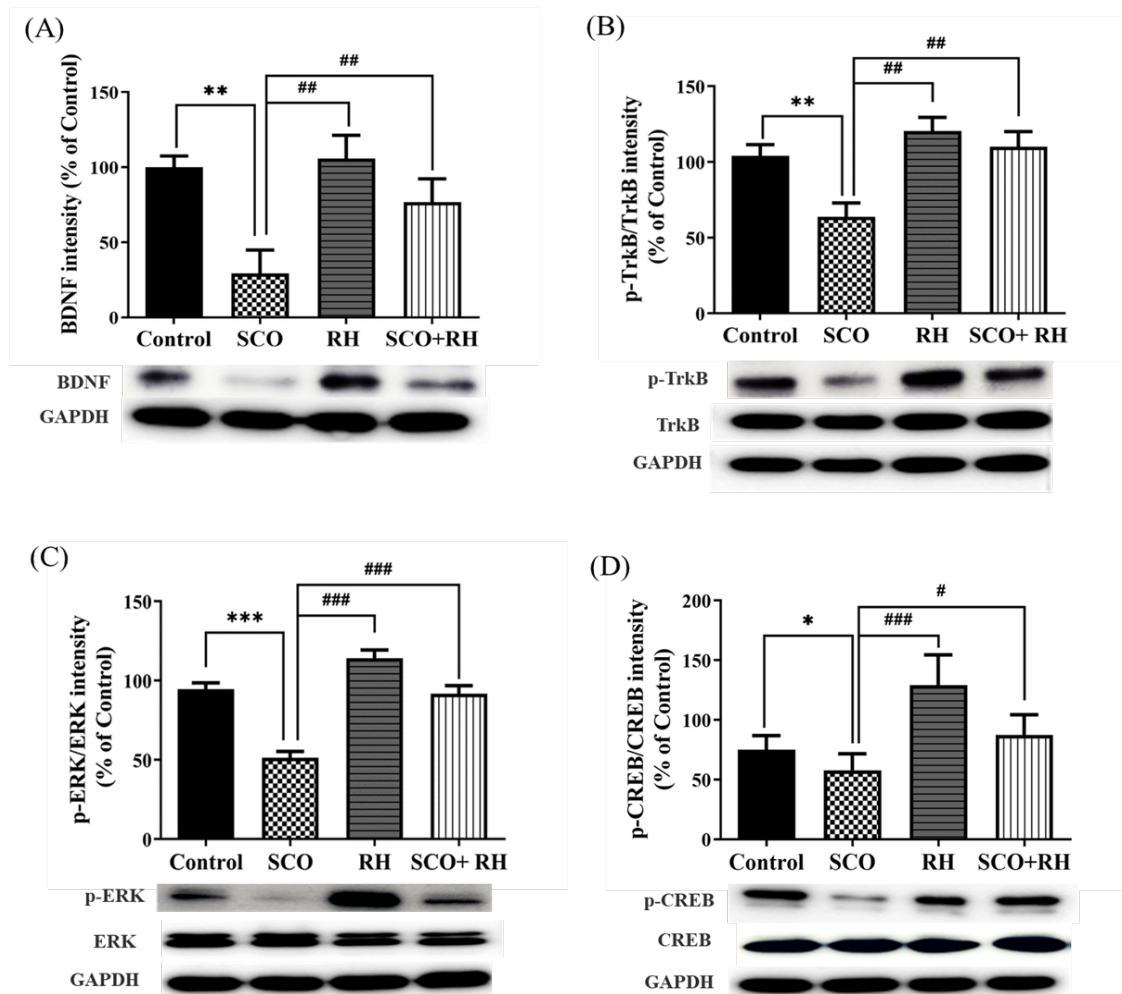


Figure 6. Effect of RH on the BDNF, TrkB, ERK and CREB protein expression in the SCO-induced rat hippocampus. (A) Band quantification of BDNF/GAPDH ratios. (B) Band quantification of p-TrkB/TrkB/GAPDH ratios, (C) Band quantification of p-ERK/ERK/GAPDH ratios, (D) Band quantification of p-CREB/CREB/GAPDH ratios. Final data are presented when $n = 5$, mean \pm SEM, * $p < 0.05$, ** $p < 0.01$ vs. control, # $p < 0.05$, ## $p < 0.01$, ### $p < 0.001$ vs. SCO group with the analysis performed using one-way ANOVA honest significant difference LSD test between groups. SCO, scopolamine; RH, routine hydrate.

3.7. RH Regulates Apoptosis-Related Protein Production in the Hippocampus of SCO-Induced SD Rats

Protein levels related to neuronal apoptosis in the hippocampus of SCO-induced SD rats were measured using western blot analysis. The results of all the groups were moderately compared with those of the control group. The ratios of Bax/ glyceraldehyde 3-phosphate dehydrogenase (GAPDH) and Bcl2/GAPDH showed significant differences in all the groups compared to the SCO group. For the apoptosis inhibitory protein Bcl2, RH was used, and a significant difference was observed among the handling groups [$F(3, 16) = 5.267$, $p < 0.05$, Figure 7A]. In association with the control group, Bcl2 level were reduced in the SCO group ($p < 0.01$). Nevertheless, Bcl2 levels in the RH treated group ($p < 0.05$) were notably higher than those in the SCO group. An obvious change was observed in the hippocampal Bax appearance among the groups [$F(3, 16) = 6.796$, $p < 0.01$, Figure 7B]. The apoptosis-promoting protein Bax was significantly upregulated in the SCO group actively compared to the control group ($p < 0.01$), whereas the Bax levels in the RH ($p < 0.05$) and SCO+RH ($p < 0.05$) treatment

group decreased in comparison with the SCO group. These results indicated that RH treatment could prevent SCO-induced apoptotic changes.

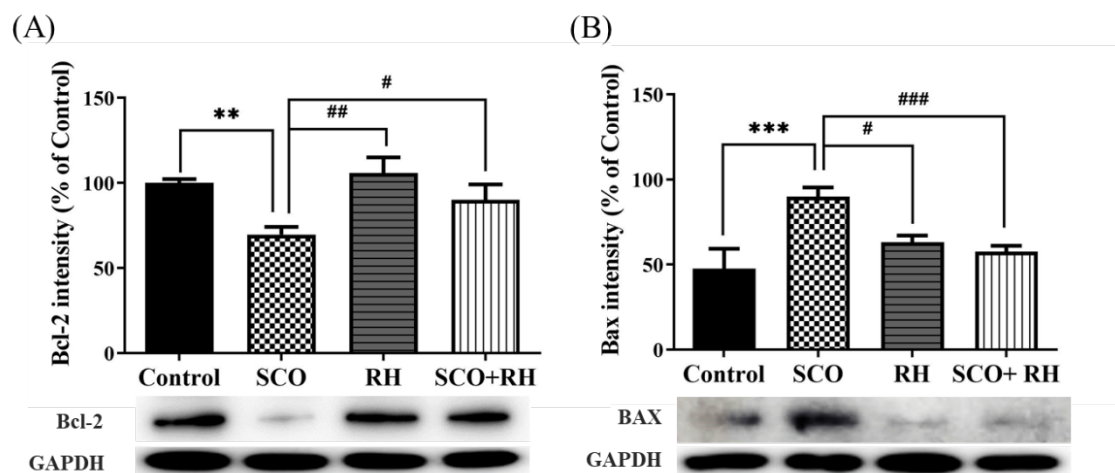


Figure 7. Results of RH on the protein expression of Bcl2 and Bax in SCO treated rat hippocampus. Western blotting biomarkers of Bcl2, Bax, and GAPDH expression in the hippocampus (A) Band quantification of Bcl2/GAPDH ratios. (B) Band quantification of Bax /GAPDH ratios. Data are shown when $n=5$, mean \pm SEM, $**p < 0.01$ vs. control, $*p < 0.05$, $##p < 0.01$ vs. SCO group with the analysis performed using one-way ANOVA with post-hoc LSD test between groups. SCO, scopolamine; RH, routine hydrate.

4. Discussion

In an aging society, NDD results in the slow progressive loss of neurons in the central nervous system (CNS), which leads to deficits in specific brain functions. Studies on the natural plant bioactive polyphenolic compound, RH, have been shown to inhibit cognitive impairment in scopolamine-induced SD rats. SCO is known as a non-selective muscarinic receptor antagonist that inhibits muscarinic acetylcholine receptors and central cholinergic neuronal activity. It causes deficits in learning and short-term memory and impairs cognitive and non-cognitive functions. Therefore, scopolamine has been used as an effective standard or reference component for the induction of dementia-related cognitive deficits as well as the suppression of working memory (spatial) in healthy humans and animals [39–41]. Also, the results of previous studies showed that SCO injection (a daily dosage of 1.5 mg/kg/day, i.p.) successively blocked ACh receptors and induced cognitive dysfunction [42–44]. SCO administration (1.5 mg/kg/day, i.p.) in rats significantly elevated the neuroinflammatory markers, leading to neuronal injury [28,45]. Therefore, the concentration of SCO (1.5 mg/kg/day) was determined based on previous studies.

In our study, the effect of RH on LTP induction was investigated using electrophysiology. Primary LTP experiments were performed to determine the optimal dose concentrations of RH (1, 10, and 100 μ M), and the fEPSP total activity baseline percentage was measured between 30 to 40 min following TBS. All the groups treated with RH concentrations demonstrated significant differences from the control group and increased fEPSP total activity (Figure 7A, B). The results with the greatest difference were found at 100 μ M, and the results confirmed that this optimal concentration increased the fEPSP total activity. LTP is a key experimental model for measuring synaptic activity related to learning and memory [46–49]. LTP can also be used to study NDD, such as AD, and the factors that cause neuroinflammation, which can result in AD [50]. The results demonstrated that RH potentiated CA1 LTP and ameliorated SCO-induced impairment of LTP (Figure 7C, D). RH treatment enhanced LTP in ex vivo cultured hippocampal tissue [51] cultures at doses of 1, 10, and 100 μ M compared to the control group, and RH of 100 μ M increased the spontaneous activity of fEPSP prior to TBS. Thus, 100 μ M RH was used to assess the effects of RH on SCO-treated tissues. Notably, treatment with 100

μM RH attenuated SCO-induced LTP impairment in tissues. The total fEPSP activity in the scopolamine group was favorably lower than that of the control, whereas the SCO+RH group increased with the SCO group (Figure 7C, D). Thus, RH enhances synaptic strength and has a protective effect against SCO-induced neurodegeneration [52]. Learning and memory require synaptic plasticity arbitrated by NMDA and AMPA glutamate receptors that comprise LTP, which rapidly increases the synaptic strength [53]. In response to acute stimulation and homeostatic plasticity, which gradually adjust the synaptic strength in response to chronic activity variations, LTP and homeostatic plasticity are expressed through variations in AMPA receptor localization and function. Alterations in these mechanisms are implicated in nervous system disorders, including AD, schizophrenia, Down syndrome, and autism. Moreover, localized Ca^{2+} influx [54] through NMDAR can provide emerging CA3 pyramidal cell synapses and may be involved in activity-dependent synaptogenesis and network formation. Activation of NMDAR leads to a cytosolic free intracellular calcium (Ca^{2+}) increase, which is required for LTP and synaptic plasticity [55]. Cognitive impairment in AD is closely related to synaptic plasticity, in which NDMAR plays a critical role. Excitatory glutamatergic neurotransmission via NDMAR is critical for synaptic plasticity and neuronal survival. Extracellular $\text{A}\beta$ and tau work together to drive healthy neurons into a diseased state in the brain in AD, leading to aberrant excitatory network activity and compensatory inhibitory responses involving learning and memory circuits [56].

In the Y-maze task, the measured percentage of spontaneous alternation was related to short-term spatial memory, and rats preferred exploring a new arm rather than turning back to the previously visited arm in the Y-maze, which is attributable to the instinct of rodents exploring new environments. The results demonstrated that the percentage of spontaneous alternations in each group was significantly different (Figure 3A). The RH group demonstrated a significant difference, and the SCO group showed decreased alternation behavior compared to the control group. No differences were observed in the total number of arm entries (Figure 3B), indicating that the differences in alternation behavior had no confounding influence on locomotor activity for spatial memory.

The MWN task is a widely accepted method used to assess long-term spatial learning and memory in rats. In the experimental trials, the escape latency to find the platform indicated how quickly the rats could learn and memorize the location of the hidden platform, evaluating long-term spatial learning capabilities. In this study, the escape latency to the platform of all the groups gradually decreased over four days [57]. However, the SCO group had a slower learning rate than the other groups (Figure 4A). After training to evaluate the spatial learning capability of rats, the swimming time in the target zone where the platform was located was measured; the SCO group swam randomly and irregularly in the maze, and the swimming time of the rats crossing the target zone decreased. The deterioration in performance of the SCO group implied marked long-term learning and memory impairment in rats induced by SCO. The RH+SCO group performed significantly more accurate navigation to the target quadrant and demonstrated similar swimming times in the target zone compared to that of the control (Figure 4B). These results suggest that RH effectively attenuates long-term spatial learning and memory deficits.

The PA task is an experiment that employs the instinct of rats that prefer darkness [58]. The PA test was performed to evaluate short-term learning and memory abilities in rats that were exposed to an unavoidable electronic shock when entering a dark box in this study. The SCO group did not remember the electric shock of the day before and entered the dark box again with little latency [59]. However, the RH group considerably retarded the step-through latency. RH administration effectively alleviated the reduction in the step-through latency induced by SCO. These results indicate that RH inhibits short-term learning and memory impairment (Figure 5). In all the behavioral tests, RH effectively inhibited learning and memory dysfunction induced by SCO in three different behavioral tests (Y-maze, PA, and MWN).

Brain-derived neurotrophic factor (BDNF) is an important member of the classic neurotrophin family that plays a crucial role in the formation, development, and function of the brain via the BDNF-TrkB-CREB pathway that regulates neuronal survival, differentiation and plasticity by activation.

BDNF, TrkB, and CREB are well-known indicators of synaptic function regulation, neuronal survival, and differentiation. These proteins may also play pivotal roles in hippocampal LTP and synaptic plasticity enhancement [60]. In this study, SCO treatment decreased the BDNF, TrkB, and CREB levels [61–63] in rat hippocampi. The ERK/MAPK pathway links extracellular signals to membrane receptors, triggering a cascade reaction in transcription factors and eventually regulating gene expression. This pathway has been confirmed to be involved in neurodegeneration and oxidative stress [64]. RH increased the expression of these three proteins, thereby attenuating SCO-induced downregulation in the hippocampus. Bcl2 family proteins are central regulators of mitochondria-mediated apoptosis and are involved in neural apoptosis [65]. Bcl2 enhances cell survival, and Bax promotes cell death [66]. Bcl2 has also been suggested to be directly dependent on the elevation of Bax. Moreover, few reports have demonstrated that Bax protein levels increase in the brain of AD patients [67,68]. Considering the effect of RH on Bcl2 and Bax, the results of western blot analysis demonstrated that RH attenuated decreasing and increasing Bax and Bcl2 expression, respectively. RH was shown to suppress neuronal histone acetylase activity and increase histone-tail acetylation, which enhanced the expression of BDNF-TrkB signaling pathway components, including CREB, independent of the activation of nuclear factor erythroid 2-related factor 2 (Nrf2), suggesting that RH could enhance neuronal plasticity. Furthermore, clinical studies have investigated the safety profile and efficacy of flavonoids against peptic ulcers, schizophrenia, autism spectrum disorder, and other diseases [69–71]. Despite the many advantages of RH, such as its DMSO/ dimethyl formamide (DMF) solubility, good pharmacokinetics, safety during oral administration, and potential blood-brain barrier penetration ability [72], doses of 150–300 mg/kg have been reported to produce marked sedation, hyperthermia, impaired motor coordination, and decreased skeletal muscle length in mice [73]. Therefore, the safety profile and risk-to-benefit ratio of RH usage should be comprehensively evaluated.

5. Conclusions

In conclusion, our evaluated results demonstrated that RH prevented the suppression of LTP and enhanced short- and long-term spatial recognition and avoidance memory in scopolamine-induced SD rats. The protective effects of RH were associated with upregulation of the expression of proteins related to the BDNF/TrkB/ERK/CREB pathway and the reduction of proapoptotic activity via Bcl2 and BAX. These findings indicate that RH improves learning and memory abilities by triggering cell survival and inhibiting apoptosis pathways. In addition, the electrophysiological analysis demonstrates that RH enhances synaptic plasticity and synaptic function in the hippocampus through LTP. Consequently, RH may be a worthwhile agent for the treatment of diseases of learning and memory impairment.

Author Contributions: Conceptualization, Methodology, Investigation, and writing-original draft were performed by G.-Y.C. and I.S.; Formal analysis, and Investigation were performed by I.-S.L. and O.I.; Visualization and Validation were performed by H.-S.L., Y.-N.P. and C.-W.L.; Writing review and editing was performed by S.M.; Writing-review and editing, Supervision, and Project administration were performed by J.-H. P.; I.S. and G.-Y.C. contributed equally to this work as co-first authors. All authors have read and agreed to the published version of the manuscript.

Funding: This work was supported by the BK21 plus program “AgeTech-Service Convergence Major” through the National Research Foundation (NRF) funded by the Ministry of Education of Korea [5120200313836] and the GRRC program of Gyeonggi province (GRRCKyunghee2018-B05).

Institutional Review Board Statement: The animal study protocol was approved by the Animal Ethics Committee of Kyung-Hee University (KHUASP 19-337) and was performed according to the guidelines of the Council of the National Institutes of Health Guide for the Care and Use of Laboratory Animals.

Informed Consent Statement: Not applicable.

Data Availability Statement: The data used to support the findings of this study are available from the corresponding author upon request.

Conflicts of Interest: The authors declare no conflicts of interest.

References

- Hou, Y.; Dan, X.; Babbar, M.; Wei, Y.; Hasselbalch, S.G.; Croteau, D.L.; Bohr, V.A. Ageing as a risk factor for neurodegenerative disease. *Nature Reviews Neurology* **2019**, *15*, 565-581.
- Enogieru, A.B.; Haylett, W.; Hiss, D.C.; Bardien, S.; Ekpo, O.E. Rutin as a potent antioxidant: Implications for neurodegenerative disorders. *Oxidative Medicine and Cellular Longevity* **2018**, 2018.
- Zhou, Y.; Zhen, Y.; Wang, G.; Liu, B. Deconvoluting the complexity of reactive oxygen species (ROS) in neurodegenerative diseases. *Frontiers in Neuroanatomy* **2022**, *16*.
- Franceschi, C.; Garagnani, P.; Morsiani, C.; Conte, M.; Santoro, A.; Grignolio, A.; Monti, D.; Capri, M.; Salvioli, S. The continuum of aging and age-related diseases: common mechanisms but different rates. *Frontiers in medicine* **2018**, *5*, 61.
- Di Meo, F.; Valentino, A.; Petillo, O.; Peluso, G.; Filosa, S.; Crispi, S. Bioactive polyphenols and neuromodulation: Molecular mechanisms in neurodegeneration. *International journal of molecular sciences* **2020**, *21*, 2564.
- Guo, T.; Zhang, D.; Zeng, Y.; Huang, T.Y.; Xu, H.; Zhao, Y. Molecular and cellular mechanisms underlying the pathogenesis of Alzheimer's disease. *Molecular neurodegeneration* **2020**, *15*, 1-37.
- de Andrade Teles, R.B.; Diniz, T.C.; Costa Pinto, T.C.; de Oliveira Junior, R.G.; Gama e Silva, M.; de Lavor, É.M.; Fernandes, A.W.C.; de Oliveira, A.P.; de Almeida Ribeiro, F.P.R.; da Silva, A.A.M. Flavonoids as therapeutic agents in Alzheimer's and Parkinson's diseases: A systematic review of preclinical evidences. *Oxidative medicine and cellular longevity* **2018**, 2018.
- Kumar, S.; Pandey, A.K. Chemistry and biological activities of flavonoids: an overview. *The scientific world journal* **2013**, 2013.
- Kurutas, E.B. The importance of antioxidants which play the role in cellular response against oxidative/nitrosative stress: current state. *Nutrition journal* **2015**, *15*, 1-22.
- Narayana, K.R.; Reddy, M.S.; Chaluvadi, M.; Krishna, D. Bioflavonoids classification, pharmacological, biochemical effects and therapeutic potential. *Indian journal of pharmacology* **2001**, *33*, 2-16.
- Van Acker, S.A.; Tromp, M.N.; Griffioen, D.H.; Van Bennekom, W.P.; Van Der Vijgh, W.J.; Bast, A. Structural aspects of antioxidant activity of flavonoids. *Free Radical Biology and Medicine* **1996**, *20*, 331-342.
- Hague, S.; Klaffke, S.; Bandmann, O. Neurodegenerative disorders: Parkinson's disease and Huntington's disease. *Journal of Neurology, Neurosurgery & Psychiatry* **2005**, *76*, 1058-1063.
- Javed, H.; Khan, M.; Ahmad, A.; Vaibhav, K.; Ahmad, M.; Khan, A.; Ashafaq, M.; Islam, F.; Siddiqui, M.; Safhi, M. Rutin prevents cognitive impairments by ameliorating oxidative stress and neuroinflammation in rat model of sporadic dementia of Alzheimer type. *Neuroscience* **2012**, *210*, 340-352.
- Choi, G.-Y.; Kim, H.-B.; Hwang, E.-S.; Lee, S.; Kim, M.-J.; Choi, J.-Y.; Lee, S.-O.; Kim, S.-S.; Park, J.-H. Curcumin alters neural plasticity and viability of intact hippocampal circuits and attenuates behavioral despair and COX-2 expression in chronically stressed rats. *Mediators of inflammation* **2017**, 2017.
- Jung, U.J.; Kim, S.R. Beneficial effects of flavonoids against Parkinson's disease. *Journal of medicinal food* **2018**, *21*, 421-432.
- Sun, X.-L.; Zhang, J.-B.; Guo, Y.-X.; Xia, T.-S.; Xu, L.-C.; Rahmand, K.; Wang, G.-P.; Li, X.-J.; Han, T.; Wang, N.-N. Xanthohumol ameliorates memory impairment and reduces the deposition of β -amyloid in APP/PS1 mice via regulating the mTOR/LC3II and Bax/Bcl-2 signalling pathways. *Journal of Pharmacy and Pharmacology* **2021**, *73*, 1230-1239.
- Djeuzong, E.; Kandeda, A.K.; Djiogue, S.; Stéphanie, L.; Nguedia, D.; Nguenguim, F.; Djientcheu, J.P.; Kouamouo, J.; Dimo, T. Antiamnesic and neuroprotective effects of an aqueous extract of Ziziphus jujuba Mill.(Rhamnaceae) on scopolamine-induced cognitive impairments in rats. *Evidence-Based Complementary and Alternative Medicine* **2021**, 2021.
- Nadimi, H.; Djazayeri, A.; Javanbakht, M.H.; Dehpour, A.; Ghaedi, E.; Derakhshanian, H.; Mohammadi, H.; Mousavi, S.N.; Djalali, M. Effect of vitamin D supplementation on CREB-TrkB-BDNF pathway in the hippocampus of diabetic rats. *Iranian Journal of Basic Medical Sciences* **2020**, *23*, 117.
- Qi, G.; Mi, Y.; Wang, Y.; Li, R.; Huang, S.; Li, X.; Liu, X. Neuroprotective action of tea polyphenols on oxidative stress-induced apoptosis through the activation of the TrkB/CREB/BDNF pathway and Keap1/Nrf2 signaling pathway in SH-SY5Y cells and mice brain. *Food & function* **2017**, *8*, 4421-4432.
- Ye, Y.-L.; Zhong, K.; Liu, D.-D.; Xu, J.; Pan, B.-B.; Li, X.; Yu, Y.-P.; Zhang, Q. Huanglian-Jie-Du-Tang extract ameliorates depression-like behaviors through BDNF-TrkB-CREB pathway in rats with chronic unpredictable stress. *Evidence-Based Complementary and Alternative Medicine* **2017**, 2017.
- Shabani, S.; Mirshekar, M.A. Diosmin is neuroprotective in a rat model of scopolamine-induced cognitive impairment. *Biomedicine & Pharmacotherapy* **2018**, *108*, 1376-1383.

22. Bliss, T.V.; Lomo, T. Long-lasting potentiation of synaptic transmission in the dentate area of the anaesthetized rabbit following stimulation of the perforant path. *The Journal of physiology* **1973**, *232*, 331-356.
23. Purves, D.; Augustine, G.; Fitzpatrick, D.; Katz, L.; LaMantia, A.; McNamara, J.; Williams, S. Neuroscience 2nd edition. Sunderland (ma) sinauer associates. *Types of Eye Movements and Their Functions* **2001**.
24. Lei, H.; Zhang, Y.; Huang, L.; Xu, S.; Li, J.; Yang, L.; Wang, L.; Xing, C.; Wang, X.; Peng, Y. L-3-n-butylphthalide regulates proliferation, migration, and differentiation of neural stem cell in vitro and promotes neurogenesis in APP/PS1 mouse model by regulating BDNF/TrkB/CREB/Akt pathway. *Neurotoxicity Research* **2018**, *34*, 477-488.
25. Alonso-Castro, A.J.; Rangel-Velázquez, J.E.; Isordia-Espinoza, M.A.; Villanueva-Solís, L.E.; Aragon-Martinez, O.H.; Zapata-Morales, J.R. Synergism between naproxen and rutin in a mouse model of visceral pain. *Drug Development Research* **2017**, *78*, 184-188.
26. Ganesan, D.; Albert, A.; Paul, E.; Ananthapadmanabhan, K.; Andiappan, R.; Sadasivam, S.G. Rutin ameliorates metabolic acidosis and fibrosis in alloxan induced diabetic nephropathy and cardiomyopathy in experimental rats. *Mol Cell Biochem* **2020**, *471*, 41-50, doi:10.1007/s11010-020-03758-y.
27. Wang, B.; Liu, D.; Zhu, Q.H.; Li, M.; Chen, H.; Guo, Y.; Fan, L.P.; Yue, L.S.; Li, L.Y.; Zhao, M. Rutin ameliorates kidney interstitial fibrosis in rats with obstructive nephropathy. *Int Immunopharmacol* **2016**, *35*, 77-84, doi:10.1016/j.intimp.2016.03.029.
28. Kazmi, I.; Al-Abbasi, F.A.; Afzal, M.; Nadeem, M.S.; Altayb, H.N. Sterubin protects against chemically-induced Alzheimer's disease by reducing biomarkers of inflammation-IL-6/IL- β /TNF- α and oxidative stress-SOD/MDA in rats. *Saudi Journal of Biological Sciences* **2023**, *30*, 103560.
29. Choi, G. Y.; Kim, H. B.; Hwang, E. S.; Park, H. S.; Cho, J. M.; Ham, Y. K.; Kim, J. H.; Mun, M. K.; Maeng, S.; Park, J. H. Naringin enhances long-term potentiation and recovers learning and memory deficits of amyloid-beta induced Alzheimer's disease-like behavioral rat model. *Neurotoxicology* **2022**, *95*, 35-45.
30. Egert, U.; Schlosshauer, B.; Fennrich, S.; Nisch, W.; Fejt, M.; Knott, T.; Müller, T.; Hämmerle, H. A novel organotypic long-term culture of the rat hippocampus on substrate-integrated multielectrode arrays. *Brain Research Protocols* **1998**, *2*, 229-242.
31. Abraham, W.C.; Huggett, A. Induction and reversal of long-term potentiation by repeated high-frequency stimulation in rat hippocampal slices. *Hippocampus* **1997**, *7*, 137-145.
32. Gudapati, K.; Singh, A.; Clarkson-Townsend, D.; Phillips, S.Q.; Douglass, A.; Feola, A.J.; Allen, R.S. Behavioral assessment of visual function via optomotor response and cognitive function via Y-maze in diabetic rats. *JoVE (Journal of Visualized Experiments)* **2020**, e61806.
33. Zhang, J.; Yu, C.; Zhang, X.; Chen, H.; Dong, J.; Lu, W.; Song, Z.; Zhou, W. Porphyromonas gingivalis lipopolysaccharide induces cognitive dysfunction, mediated by neuronal inflammation via activation of the TLR4 signaling pathway in C57BL/6 mice. *Journal of neuroinflammation* **2018**, *15*, 1-14.
34. Jin, X.; Liu, M.Y.; Zhang, D.F.; Zhong, X.; Du, K.; Qian, P.; Yao, W.F.; Gao, H.; Wei, M.J. Baicalin mitigates cognitive impairment and protects neurons from microglia-mediated neuroinflammation via suppressing NLRP 3 inflammasomes and TLR 4/NF- κ B signaling pathway. *CNS Neuroscience & Therapeutics* **2019**, *25*, 575-590.
35. Morris, R. Developments of a water-maze procedure for studying spatial learning in the rat. *Journal of neuroscience methods* **1984**, *11*, 47-60.
36. Bradford, M.M. A rapid and sensitive method for the quantitation of microgram quantities of protein utilizing the principle of protein-dye binding. *Analytical biochemistry* **1976**, *72*, 248-254.
37. Kim, H.-B.; Kwon, B.-J.; Cho, H.-J.; Kim, J.-W.; Chon, J.-W.; Do, M.-H.; Park, S.-Y.; Kim, S.-Y.; Maeng, S.-H.; Park, Y.-K. Long-term treatment with oriental medicinal herb artemisia princeps alters neuroplasticity in a rat model of ovarian hormone deficiency. *Experimental Neurobiology* **2015**, *24*, 71.
38. Shin, T.-J.; Kim, H.-J.; Kwon, B.-J.; Choi, S.-H.; Kim, H.-B.; Hwang, S.-H.; Lee, B.-H.; Lee, S.-M.; Zukin, R.S.; Park, J.-H. Gintonin, a ginseng-derived novel ingredient, evokes long-term potentiation through N-methyl-D-aspartic acid receptor activation: involvement of LPA receptors. *Molecules and cells* **2012**, *34*, 563-572.
39. Chen, J.; Long, Y.; Han, M.; Wang, T.; Chen, Q.; Wang, R. Water-soluble derivative of propolis mitigates scopolamine-induced learning and memory impairment in mice. *Pharmacology Biochemistry and Behavior* **2008**, *90*, 441-446.
40. Goverdhan, P.; Sravanthi, A.; Mamatha, T. Neuroprotective effects of meloxicam and selegiline in scopolamine-induced cognitive impairment and oxidative stress. *International Journal of Alzheimer's Disease* **2012**, *2012*, 974013.
41. Klinkenberg, I.; Blokland, A. The validity of scopolamine as a pharmacological model for cognitive impairment: a review of animal behavioral studies. *Neuroscience & Biobehavioral Reviews* **2010**, *34*, 1307-1350.
42. Bertoglio, L.J.; Carobrez, A.P. Scopolamine given pre-Trial 1 prevents the one-trial tolerance phenomenon in the elevated plus-maze Trial 2. *Behav Pharmacol* **2004**, *15*, 45-54, doi:10.1097/00008877-200402000-00006.

43. Foyet, H.S.; Abaïssou, H.H.; Wado, E.; Acha, E.A.; Alin, C. Emilia coccinae (SIMS) G Extract improves memory impairment, cholinergic dysfunction, and oxidative stress damage in scopolamine-treated rats. *BMC Complement Altern Med* **2015**, *15*, 333, doi:10.1186/s12906-015-0864-4.
44. Kim, J.-H.; Kim, J.H.; He, M.T.; Kim, S.C.; Hwa, K.P.; Cho, K.M.; Cho, E.J. Protective Effect of Processed Polygoni multiflori Radix and Its Major Substance during Scopolamine-Induced Cognitive Dysfunction. *Processes* **2021**, *9*, 342.
45. Green, J.; Heifets, B.; Pak, J.; Pak, M.; Woodruff-Pak, D. Nefiracetam ameliorates associative learning impairment in the scopolamine-injected older rabbit. *Medical Science Monitor* **2002**, *8*, BR105-BR112.
46. Shang, H.; Yang, D.; Zhang, W.; Li, T.; Ren, X.; Wang, X.; Zhao, W. Time course of Keap1-Nrf2 pathway expression after experimental intracerebral haemorrhage: correlation with brain oedema and neurological deficit. *Free radical research* **2013**, *47*, 368-375.
47. Farhat, F.; Nofal, S.; Raafat, E.M.; Ahmed, A.A.E. Akt/GSK3 β /Nrf2/HO-1 pathway activation by flurbiprofen protects the hippocampal neurons in a rat model of glutamate excitotoxicity. *Neuropharmacology* **2021**, *196*, 108654.
48. Joshi, G.; A Johnson, J. The Nrf2-ARE pathway: a valuable therapeutic target for the treatment of neurodegenerative diseases. *Recent Patents on CNS Drug Discovery (Discontinued)* **2012**, *7*, 218-229.
49. Hwang, E.-S.; Kim, H.-B.; Choi, G.-Y.; Lee, S.; Lee, S.-O.; Kim, S.; Park, J.-H. Acute rosmarinic acid treatment enhances long-term potentiation, BDNF and GluR-2 protein expression, and cell survival rate against scopolamine challenge in rat organotypic hippocampal slice cultures. *Biochemical and Biophysical Research Communications* **2016**, *475*, 44-50.
50. Mango, D.; Saidi, A.; Cisale, G.Y.; Feligioni, M.; Corbo, M.; Nistico, R. Targeting Synaptic Plasticity in Experimental Models of Alzheimer's Disease. *Front Pharmacol* **2019**, *10*, 778, doi:10.3389/fphar.2019.00778.
51. Hong, S.-W.; Yoo, D.-H.; Woo, J.-Y.; Jeong, J.-J.; Yang, J.-h.; Kim, D.-H. Soyasaponins Ab and Bb prevent scopolamine-induced memory impairment in mice without the inhibition of acetylcholinesterase. *Journal of agricultural and food chemistry* **2014**, *62*, 2062-2068.
52. Ishola, I.O.; Olubodun-Obadun, T.G.; Ojulari, M.A.; Adeyemi, O.O. Rutin ameliorates scopolamine-induced learning and memory impairments through enhancement of antioxidant defense system and cholinergic signaling. *Drug Metabolism and Personalized Therapy* **2021**, *36*, 53-61.
53. Meng, X.; Fu, M.; Wang, S.; Chen, W.; Wang, J.; Zhang, N. Naringin ameliorates memory deficits and exerts neuroprotective effects in a mouse model of Alzheimer's disease by regulating multiple metabolic pathways. *Molecular Medicine Reports* **2021**, *23*, 1-13.
54. Lee, Y.-S.; Silva, A.J. The molecular and cellular biology of enhanced cognition. *Nature Reviews Neuroscience* **2009**, *10*, 126-140.
55. Baudry, M.; Bi, X.; Gall, C.; Lynch, G. The biochemistry of memory: The 26 year journey of a 'new and specific hypothesis'. *Neurobiology of learning and memory* **2011**, *95*, 125-133.
56. Ménard, C.; Quirion, R. Group 1 metabotropic glutamate receptor function and its regulation of learning and memory in the aging brain. *Frontiers in pharmacology* **2012**, *3*, 182.
57. Foudah, A.I.; Alqarni, M.H.; Alam, A.; Devi, S.; Salkini, M.A.; Alam, P. Rutin Improves Anxiety and Reserpine-Induced Depression in Rats. *Molecules* **2022**, *27*, 7313.
58. Nassiri-Asl, M.; Zamansoltani, F.; Javadi, A.; Ganjvar, M. The effects of rutin on a passive avoidance test in rats. *Progress in Neuro-Psychopharmacology and Biological Psychiatry* **2010**, *34*, 204-207.
59. Park, H.-S.; Hwang, E.-S.; Choi, G.-Y.; Kim, H.-B.; Park, K.-S.; Sul, J.-Y.; Hwang, Y.; Choi, G.W.; Kim, B.I.; Park, H. Sulforaphane enhances long-term potentiation and ameliorate scopolamine-induced memory impairment. *Physiology & Behavior* **2021**, *238*, 113467.
60. Pu, F.; Mishima, K.; Irie, K.; Motohashi, K.; Tanaka, Y.; Orito, K.; Egawa, T.; Kitamura, Y.; Egashira, N.; Iwasaki, K. Neuroprotective effects of quercetin and rutin on spatial memory impairment in an 8-arm radial maze task and neuronal death induced by repeated cerebral ischemia in rats. *Journal of pharmacological sciences* **2007**, 0707310004-0707310004.
61. Du, Q.; Zhu, X.; Si, J. Angelica polysaccharide ameliorates memory impairment in Alzheimer's disease rat through activating BDNF/TrkB/CREB pathway. *Exp Biol Med (Maywood)* **2020**, *245*, 1-10, doi:10.1177/1535370219894558.
62. Bourtchuladze, R.; Frenguelli, B.; Blendy, J.; Cioffi, D.; Schutz, G.; Silva, A.J. Deficient long-term memory in mice with a targeted mutation of the cAMP-responsive element-binding protein. *Cell* **1994**, *79*, 59-68, doi:10.1016/0092-8674(94)90400-6.
63. Pugazhenth, S.; Wang, M.; Pham, S.; Sze, C.I.; Eckman, C.B. Downregulation of CREB expression in Alzheimer's brain and in A β -treated rat hippocampal neurons. *Mol Neurodegener* **2011**, *6*, 60, doi:10.1186/1750-1326-6-60.
64. Ruiz-Medina, B.E.; Lerma, D.; Hwang, M.; Ross, J.A.; Skouta, R.; Aguilera, R.J.; Kirken, R.A.; Varela-Ramirez, A.; Robles-Escajeda, E. Green barley mitigates cytotoxicity in human lymphocytes undergoing

aggressive oxidative stress, via activation of both the Lyn/PI3K/Akt and MAPK/ERK pathways. *Scientific reports* **2019**, *9*, 6005.

65. Wei, X.; Xu, X.; Chen, Z.; Liang, T.; Wen, Q.; Qin, N.; Huang, W.; Huang, X.; Li, Y.; Li, J.; et al. Protective Effects of 2-Dodecyl-6-Methoxycyclohexa-2,5 -Diene-1,4-Dione Isolated from Averrhoa Carambola L. (Oxalidaceae) Roots on Neuron Apoptosis and Memory Deficits in Alzheimer's Disease. *Cell Physiol Biochem* **2018**, *49*, 1064-1073, doi:10.1159/000493289.
66. Sun, X.Y.; Li, L.J.; Dong, Q.X.; Zhu, J.; Huang, Y.R.; Hou, S.J.; Yu, X.L.; Liu, R.T. Rutin prevents tau pathology and neuroinflammation in a mouse model of Alzheimer's disease. *J Neuroinflammation* **2021**, *18*, 131, doi:10.1186/s12974-021-02182-3.
67. Clementi, M.E.; Pezzotti, M.; Orsini, F.; Sampaiole, B.; Mezzogori, D.; Grassi, C.; Giardina, B.; Misiti, F. Alzheimer's amyloid beta-peptide (1-42) induces cell death in human neuroblastoma via bax/bcl-2 ratio increase: an intriguing role for methionine 35. *Biochem Biophys Res Commun* **2006**, *342*, 206-213, doi:10.1016/j.bbrc.2006.01.137.
68. Su, J.H.; Deng, G.; Cotman, C.W. Bax protein expression is increased in Alzheimer's brain: correlations with DNA damage, Bcl-2 expression, and brain pathology. *J Neuropathol Exp Neurol* **1997**, *56*, 86-93, doi:10.1097/00005072-199701000-00009.
69. Abdel-Aleem, G.A.; Khaleel, E.F. Rutin hydrate ameliorates cadmium chloride-induced spatial memory loss and neural apoptosis in rats by enhancing levels of acetylcholine, inhibiting JNK and ERK1/2 activation and activating mTOR signalling. *Archives of Physiology and Biochemistry* **2018**, *124*, 367-377.
70. Pandey, V.; Vijeeppallam, K. Antipsychotic-like activity of scopoletin and rutin against the positive symptoms of schizophrenia in mouse models. *Exp Anim* **2017**, *66*, 417-423, doi:10.1538/expanim.17-0050.
71. Dinkova-Kostova, A.T.; Kostov, R.V. Glucosinolates and isothiocyanates in health and disease. *Trends Mol Med* **2012**, *18*, 337-347, doi:10.1016/j.molmed.2012.04.003.
72. Houghton, C.A.; Fassett, R.G.; Coombes, J.S. Sulforaphane: translational research from laboratory bench to clinic. *Nutr Rev* **2013**, *71*, 709-726, doi:10.1111/nure.12060.
73. Socala, K.; Nieoczym, D.; Kowalczyk-Vasilev, E.; Wyska, E.; Wlaż, P. Increased seizure susceptibility and other toxicity symptoms following acute sulforaphane treatment in mice. *Toxicol Appl Pharmacol* **2017**, *326*, 43-53, doi:10.1016/j.taap.2017.04.010.

Disclaimer/Publisher's Note: The statements, opinions and data contained in all publications are solely those of the individual author(s) and contributor(s) and not of MDPI and/or the editor(s). MDPI and/or the editor(s) disclaim responsibility for any injury to people or property resulting from any ideas, methods, instructions or products referred to in the content.