

Review

Not peer-reviewed version

Compressive Sensing for Multimodal Biomedical Signal

Anggunmeka Prasasti , [Achmad Rizal](#) ^{*} , [Bayu Erfianto](#) , [Said Ziani](#)

Posted Date: 23 June 2025

doi: 10.20944/preprints202506.1826.v1

Keywords: compressive sensing; biomedical signal; WBSN; SMS; SLR; IoMT



Preprints.org is a free multidisciplinary platform providing preprint service that is dedicated to making early versions of research outputs permanently available and citable. Preprints posted at Preprints.org appear in Web of Science, Crossref, Google Scholar, Scilit, Europe PMC.

Copyright: This open access article is published under a Creative Commons CC BY 4.0 license, which permit the free download, distribution, and reuse, provided that the author and preprint are cited in any reuse.

Disclaimer/Publisher's Note: The statements, opinions, and data contained in all publications are solely those of the individual author(s) and contributor(s) and not of MDPI and/or the editor(s). MDPI and/or the editor(s) disclaim responsibility for any injury to people or property resulting from any ideas, methods, instructions, or products referred to in the content.

Review

Compressive Sensing for Multimodal Biomedical Signal

Anggunmeka Luhur Prasasti ¹, Achmad Rizal ^{1,*}, Bayu Erfianto ² and Said Ziani ³

¹ School of Electrical Engineering, Telkom University, Bandung 40257, West Java, Indonesia

² School of Computing, Telkom University, Bandung 40257, West Java, Indonesia

³ Department of Health Technologies Engineering, Mohammed V University, Agdal, Morocco

* Correspondence: achmadrizal@telkomuniversity.ac.id

Abstract

This study investigated the transformative potential of Compressive Sensing (CS) for optimizing multimodal biomedical signal fusion in Wireless Body Sensor Networks (WBSN), specifically targeting challenges in data storage, power consumption, and transmission bandwidth. Through a Systematic Mapping Study (SMS) and Systematic Literature Review (SLR) following the PRISMA protocol, significant advancements in adaptive CS algorithms and multimodal fusion have been achieved. However, this research also identified crucial gaps in computational efficiency, hardware scalability, and noise robustness for one-dimensional biomedical signals (e.g., ECG, EEG, PPG, and SCG). The findings strongly emphasize the potential of integrating CS with deep reinforcement learning and edge computing to develop energy-efficient, real-time healthcare monitoring systems, paving the way for future innovations in Internet of Medical Things (IoMT) applications.

Keywords: compressive sensing; biomedical signal; WBSN; SMS; SLR; IoMT

1. Introduction

The rapid advancement of wireless body sensor networks (WBSN) technology has revolutionized healthcare monitoring applications, enabling the continuous, real-time acquisition of physiological data from patients [1]. One-dimensional (1D) biomedical signals, such as electrocardiograms (ECG) for heart, photoplethysmogram (PPG) for blood flow, seismocardiogram (SCG) for heart vibrations, and electroencephalograms (EEG) for brain waves, are crucial for monitoring and diagnosing health issues [2]. However, the substantial volume of biomedical signal data collected and transmitted by WBSN devices presents significant challenges in terms of data storage, power consumption, and transmission bandwidth. Efficient data compression techniques are essential to address these issues and facilitate the practical and sustainable deployment of WBSNs [2,3]. Compressive Sensing (CS) has emerged as a particularly promising approach owing to its ability to efficiently acquire and reconstruct signals using significantly fewer samples than traditional methods [4]. This offers a potential solution for reducing the load on data storage and transmission [5].

Recent research on CS has demonstrated significant advancements in optimizing compression methods for biomedical signals [2]. Several studies have explored the use of a dynamic sensing matrix to enhance the compression efficiency of ECG signals in Internet of Thing (IoT) applications [6]. Furthermore, a self-adaptive compression ratio approach, utilizing Optimized Discrete Cosine Transform (ODCT) reconstruction, has been proposed for compressing physiological voice data [7]. Deep learning techniques are increasingly being integrated with CS to improve the performance of biomedical signal compression and reconstruction. An example is the development of a deep compressive sensing framework for ECG signals, which employs multiscale feature fusion, along with squeeze-and-excitation (SE) blocks and modified Inception and Long Short-Term Memory

(LSTM) blocks [8,9]. Despite these developments, the improvement of CS methods that are more adaptive, efficient, and robust to noise and artifacts in one-dimensional biomedical signals remains an active area of research [10].

Fusion, or merging of multimodal biomedical signals, is a process that integrates diverse information from various modalities (different biomedical signal acquisition devices) [3]. Multimodal feature fusion helps to generate more robust and accurate predictions because information from different modalities (data types) complements each other [2,11]. This approach addresses the limitations of incomplete information obtained from a single modality, thereby strengthening the feature representation and enriching information within a single biomedical signal data stream [12]. Each medical signal has unique characteristics that reflect different aspects of the human body. For instance, heart rate variability exhibits both low- and high-frequency components, indicating parasympathetic and sympathetic nervous system activities, respectively. Integrating various signals can provide a more comprehensive and accurate representation than relying solely on a single signal, leading to richer and more complete understanding. Researchers are increasingly interested in combining different medical signals (multimodal fusion) to gain more comprehensive insights, as a single signal type often proves to be insufficient for differentiating diseases and their symptoms. The appropriate selection of unimodal biomedical signal data and the chosen multimodal fusion strategy are two crucial components of health and affective analysis systems, often outperforming unimodal health detection and emotion recognition systems [13].

Research on multimodal biomedical signal fusion is still in its early stages, yet several studies have already demonstrated its significance in medical research [14]. However, the fusion algorithms and strategies require further refinement. Biomedical signal research can not only identify physiological diseases in living beings (humans and animals), but also psychological conditions, such as mental illness [15]. Emotions are complex phenomena that have a profound impact on the quality of life, influencing drive, perception, cognition, creativity, focus, attention, learning, and decision-making [16]. To observe a person's mental state, research continues to explore the fusion of bioelectric (such as EEG) and non-bioelectric signals (such as respiratory acoustic signals or movement data) [17]. This is because unimodal approaches are often insufficiently informative and biomedical signal fusion has been proven to increase diagnostic accuracy. Beyond these medical applications, multimodal signal fusion can be applied to Body Sensor Networks (BSN) [1]. A real-time respiration pattern diagnostic system can potentially be developed by fusing sensor data from lung sounds and cardiograms [18]. BSNs represent a revolutionary technology across various domains, including healthcare, fitness, smart cities, and numerous other compelling Internet of Things (IoT) applications, enabling a single device to monitor a vast amount of user information [19]. Multimodal biomedical signal fusion generates extremely large datasets, which necessitate effective compression methods [20]. Selecting an appropriate and effective compression technique for biomedical signal data is a key aspect of the problem addressed in this study. Furthermore, the integration of deep reinforcement learning into the compression process is crucial to ensure that no vital information within biomedical signals is lost [21].

This study has a wide scope for exploration. The unique combinations and characteristics of datasets gathered from diverse modalities will yield thousands of distinctive dataset variations, each requiring different treatments. This significantly increases the probability of discovering novel findings. This research stands out due to its broad scope for exploration. The unique combinations and characteristics of datasets gathered from diverse modalities yield thousands of distinctive variations, each requiring different treatments. This significantly increases the probability of identifying novel findings. CS methods still offer extensive potential for development, especially in optimizing data storage, computation, and transmission when combined with Deep Reinforcement Learning (DRL) [22–24]. This study aims to provide future research analysis and identify research gaps in the current work related to one-dimensional biomedical signal compressive sensing. This analysis was based on existing methodologies, specifically using a systematic mapping study (SMS) and systematic literature review (SLR), following the PRISMA protocol [25].

2. Methods

This section details the approach to paper extraction and literature study, encompassing both the Systematic Mapping Study (SMS) and Systematic Literature Review (SLR) stages [26,27]. As illustrated in Figure 1, the methodology was executed in two distinct phases: SMS first, followed by SLR. A Systematic Mapping Study (SMS) serves as a quantitative method designed to provide a broad overview of a specific research area. This includes examining publication demographics, identifying key contributors, understanding research trends, pinpointing promising research topics, and analyzing topic models [28–30]. The insights gained from this SMS serve as crucial inputs for subsequent SLR processes. The Systematic Literature Review (SLR) involves an in-depth examination of papers identified as relevant during the SMS phase [31]. This comprehensive review aims to thoroughly understand various research methodologies and objectives related to the topic of interest, including exploring performance metrics, identifying existing issues, analyzing proposed methods, and uncovering potential gaps in previous research concerning compressive sensing and biomedical signal fusion.

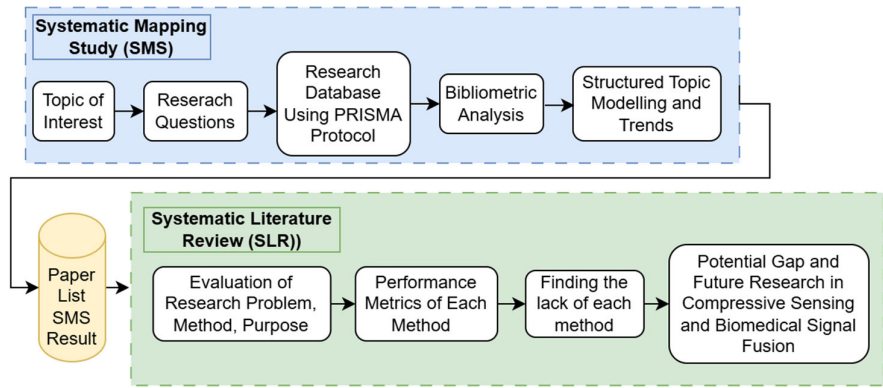


Figure 1. Research methodology.

A. Systematic Mapping Study (SMS) Method

A Systematic Mapping Study (SMS) was conducted to gain an understanding of the research landscape surrounding CS and Biomedical Signal Fusion. This included identifying the latest methods or technologies from prior research and analyzing trends in topic modelling. The results of the topic model and trend analysis from the SMS process indicate that CS and Biomedical Signal Fusion constitute a promising research area.

The SMS process is illustrated in Figure 1. The initial stage involved defining the Topic of Interest and outlining the Research Questions (RQs) for the SMS. In this particular study, three research questions were formulated. RQ1: What is the publication population regarding CS and Biomedical Signal Fusion research between 2014 and 2025? RQ2: What areas are encompassed in this topic? RQ3: What are the trends in this topic within this subject of interest?

The subsequent stage involved paper searching, study selection, and data extraction from research databases, utilizing bibliometric analysis and adhering to the PRISMA protocol (Figure 2). Papers were searched across three prominent research databases: ScienceDirect, Scopus, and IEEE. The search query employed the keywords “Compressive Sensing Biomedical Signal” or “Compressed Sensing Biomedical Signal”. The study selection criteria included publications from 2014 to 2025, encompassing conferences, journals, books, review papers, and book chapters. The query is (title-abs-key (compressive and sensing and biomedical and signal) or title-abs-key (compressed and sensing and biomedical and signal)) and pubyear > 2013 and pubyear < 2026 and (limit-to (subarea , "engi") or limit-to (subarea , "comp") or limit-to (subarea , "math")) and (limit-to (doctype , "ar") or limit-to (doctype , "cp") or limit-to (doctype , "re") or limit-to (doctype , "ch") or limit-to (doctype , "cr") or limit-to (doctype , "bk")).

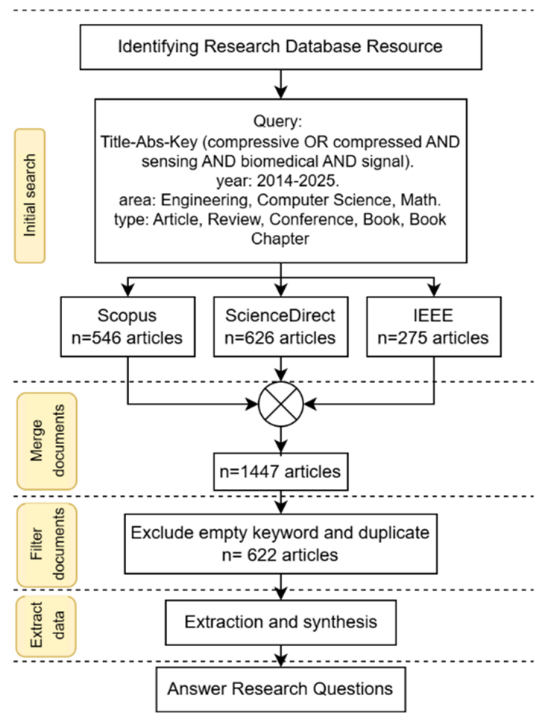


Figure 2. PRISMA protocol.

The articles were obtained from three different sources: 546 articles from Scopus, 626 articles from ScienceDirect, and 275 articles from IEEE. Following the merging of these results, a manual screening process was performed to remove duplicate titles and entries that did not contain specified keywords. This resulted in a final dataset comprising 622 articles. The last stage involved performing structured topic modelling and trend analysis, which are explained in the Results section.

B. Systematic Literature Review (SLR) Method

The subsequent phase of SMS involves conducting a Systematic Literature Review (SLR). The initial step of the SLR is to define the Research Questions (RQs), which comprise of the three questions detailed in Table 1. These RQs guide more in-depth research pertaining to CS problems in biomedical signals, CS parameter metrics, and biomedical signal fusion methods. Consequently, the RQs facilitate an evaluation of issues related to the methods and techniques employed in CS and biomedical signal fusion, ultimately identifying opportunities for research gaps based on the literature review conducted.

Table 1. RQs for SLR.

Research Question	Question
RQ1	What are the issues, methods, and performance metrics of CS?
RQ2	What are the limitations of existing methods in CS?
RQ3	What are the issues of CS metrics method in biomedical signal fusion?

The SLR conducts a more focused search for articles performed (from SMS) to gain a deeper understanding of CS and biomedical signal fusion. Before commencing the detailed review, articles were further explored using more specific queries, such as "CS optimization," "Adaptive CS," and "Biomedical signal fusion." The articles retrieved from this targeted search formed an augmented version of the dataset, merged with the initial SMS results, and were moved to the exclusion stage. Articles were selected from both the SMS process and the augmented set based on specific exclusion criteria, including accessibility, publication type, and content suitability. The articles that remained after this rigorous selection process were subsequently analyzed to answer predefined Research

Questions (RQs). The combined outcome of the SMS and SLR analyses is the State of The Art (SOTA), which comprises key articles that serve as critical references for exploring potential research gaps and future research [32].

3. Results

The findings from both the SMS and SLR are presented in relation to their respective Research Questions (RQs). The RQs guiding the SMS will inform the results regarding trends in CS within biomedical signals, along with bibliometric analyses, topic modelling, and their corresponding trends. Conversely, the RQs of the SLR have clarified issues, methodologies, and performance metrics related to CS, identified limitations and proposed solutions, and detailed various biomedical signal fusion methods.

3.1. The SMS Result of RQ1, RQ2, and RQ3: Trend, Bibliometric and Topic Modelling

For bibliometric analysis, VOSviewer was used to construct and visualize bibliometric networks. VOSviewer is a powerful tool that aids researchers in understanding the structure and dynamics of a research field [33]. It functions by analyzing and visualizing various types of bibliometric networks, including co-authorship, citation, and co-occurrence networks. The analysis of keyword (or term) co-occurrence is central to how VOSviewer identifies topical trends. In this study, metadata from various sources, namely Scopus, ScienceDirect, and IEEE, were used and stored in the CSV file format. This data contained information such as title, abstract, keywords, authors, affiliations, publication year, references, source, and document type [34]. The threshold applied was the minimum number of occurrences of a keyword, meaning that only keywords appearing at least a specified number of times were considered in the analysis. The method used for calculating co-occurrence was Full Counting. In this method, if keywords A and B appear together in one document, they receive a score of one. If they appear in 10 documents, their score is 10. This represents a direct count of the co-occurrences. For example:

- Document 1: A, B, C
- Document 2: A, B, D
- Document 3: A, C

Then:

- Co-occurrence (A, B) = 2 (because they appear in Documents 1 and 2)
- Co-occurrence (A, C) = 2 (because they appear in Documents 1 and 3)
- Co-occurrence (B, C) = 1 (because they appear only in Document 1)

VOSviewer employs normalization techniques to calculate the link strength between keywords, because some keywords may appear more frequently in general. The formula for the Link Strength between two items (e.g., keywords) *i* and *j* is:

$$S_{ij} = \frac{C_{ij}}{W_i \times W_j}$$

(1)

- S_{ij} = Link strength between item *i* and *j*.
- C_{ij} = Number of co-occurrences of items *i* and *j* (i.e., how many times they appear together).
- W_i = Total weight (e.g., total number of occurrences) of item *i*.
- W_j = Total weight (e.g., total number of occurrences) of item *j*.

Based on the co-occurrence data and calculated link strengths, VOSviewer builds network. Network Visualization then displays nodes (keywords) and connecting lines (co-occurrence relationships) with different colors indicating different clusters. The clustering algorithm employed was based on modularity optimization. Figure 3 presents a visualization of research trend clustering derived from the metadata generated in the SMS.

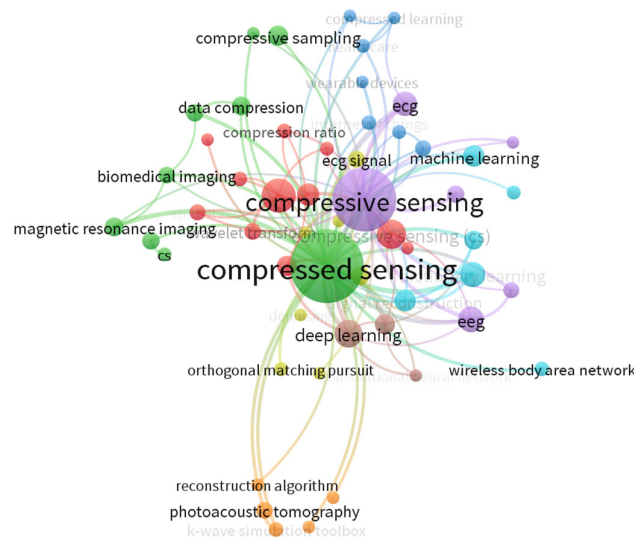


Figure 3. VOS Viewer Analysis.

This SMS contains 1436 keywords, of which 54 meet the threshold. The minimum number of occurrences of a keyword was 5. For each of the 54 keywords, the total strength of the co-occurrences link with other keywords was calculated. There are 8 clusters of works with different colors. “Compressed sensing” keyword has the higher number of occurrences (168) with total link strength is 195. The following keywords were used: compressive sensing, deep learning, ecg, eeg, compressed sensing (cs), dictionary learning, electrocardiogram, signal reconstruction, classification, and so on.

In the context of analyzing author keywords from the Scopus dataset, the Structure Topic Model (STM) with Latent Dirichlet Allocation (LDA) can effectively identify research topic trends and reveal the relationships between these topics within a research publication database. Latent Dirichlet Allocation (LDA) is a probabilistic topic modelling method specifically designed to uncover topic structures within a collection of texts. Each topic is characterized by a set of words that frequently co-occur in a specific context. LDA employs an unsupervised learning approach to group words into the most probable topic. This means that topic prevalence (how much a topic appears in a document) and/or topic content (words associated with a topic) can vary as a function of these covariates. For the purpose of a systematic mapping study, STM with LDA proved to be quite powerful and capable of analyzing author keywords from a Scopus dataset to help discover patterns and topical trends [35,36]. STM models the prevalence of topics in document d as a function of document metadata X_d :

$$\theta_d \sim \text{LogisticNormal}(\kappa(X_d, \Sigma)) \quad (2)$$

The θ_d (topic distribution for document d) is drawn from or distributed according to a Logistic-Normal distribution of metadata X_d to the mean of the logistic-normal distribution for θ_d with covariance Σ . The results of the STM with LDA for this metadata study are shown in Figure 4.

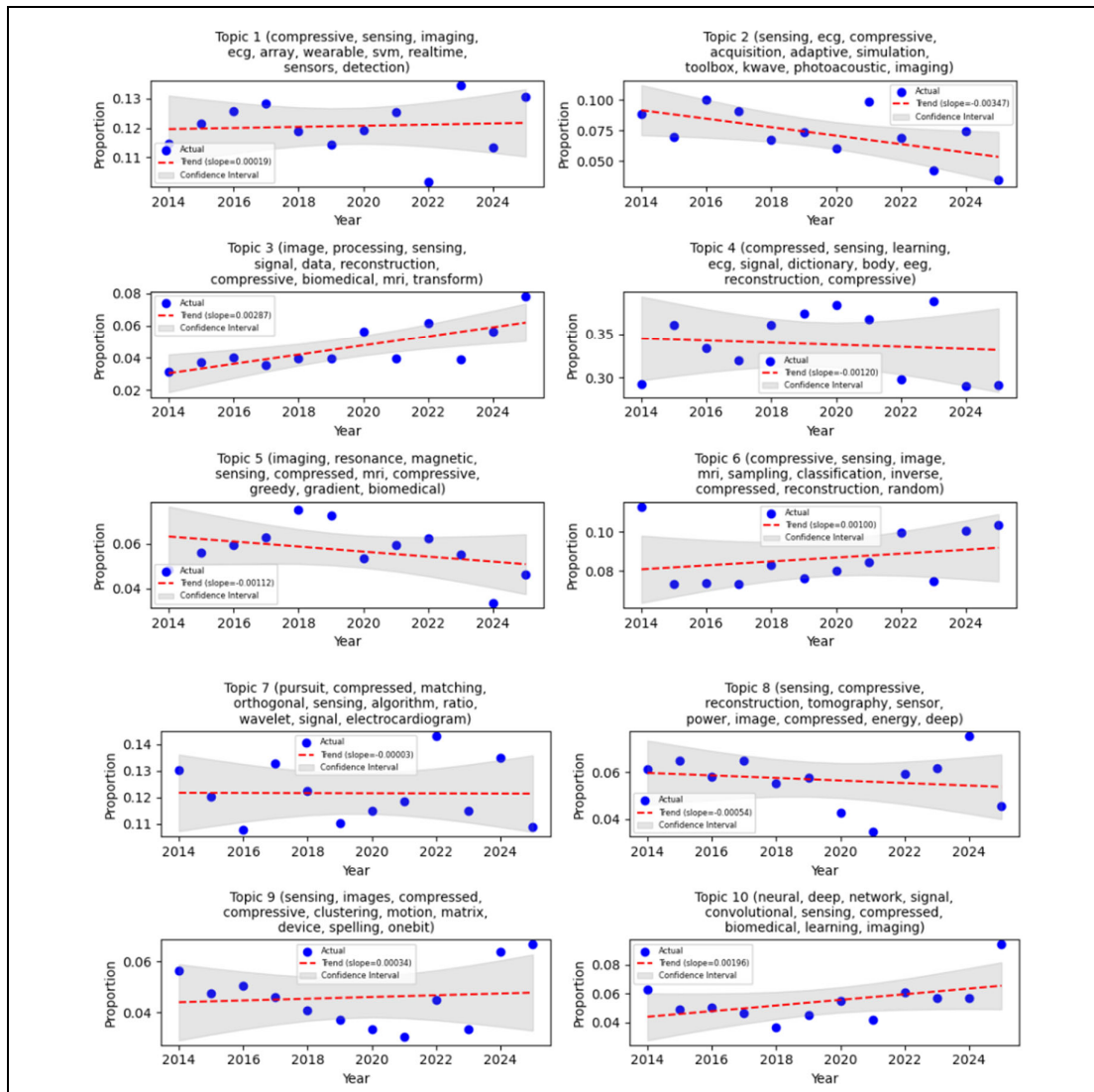


Figure 4. STM with LDA result.

Figure 4 shows the trends of each topic based on metadata through STM with LDA analysis. These trends are visualized using a linear regression plot, applied to the annual proportion of a topic's occurrence within the specified start-year and end-year range. Linear regression models the long-term trends of a topic's proportion within a publication database. In the graph, the blue dots represent the actual data proportion, indicating the real-time proportion of the topic in each given year. This proportion signifies the distribution of a particular topic in the Scopus dataset. For instance, a proportion between 0.01 and 0.02 suggests that approximately 1-2% of the publications in that specific year discuss this topic. If the proportion increases annually, this implies that the topic is gaining more attention in the research database. The red dashed line denotes the trend line derived from the linear regression, illustrating whether the topic's prevalence generally increased or decreased. The gray shaded area represents the confidence interval, which indicates the range of uncertainty for the regression model, thereby providing an estimate of the model's confidence in the predicted trend. The interpretation of the slope (gradient) is crucial, a positive slope indicates that the proportion of publications related to a topic increases over time. A very small slope value suggests that the topic's increase was relatively slow. The more detailed analysis of this trend is presented in the discussion section.

This system provides a relevance score for article and paper titles based on a selected topic. An example of a topic search and the resulting scores are shown in Figure 5. Based on these

recommended articles, titles were located within the dataset. Subsequently, the DOI or a direct link to the reference source can be retrieved to facilitate the downloading of the papers intended for Systematic Literature Review (SLR).

	Title	Author Keywords	Topic Score
300	Compressive hyperspectral imaging using total ...	ADMM; Alternating direction method of multipli...	0.816990
454	Compressive Sensing of Foot Gait Signals and I...	Biomedical signals; block-sparse structure; cl...	0.804091
310	Hybrid Compression Method Using Compressive Se...	Biomedical; Biometric; CS theory; Data compres...	0.802386
389	An innovative multi-level singular value decom...	Compressed sensing (CS); Heart sounds denoisin...	0.795504
319	Exploiting wavelet decomposition to enhance sp...	biomedical imaging; compressive sensing (CS); ...	0.786338
58	Research Progress in Optical Interference Micr...	bio-optics; digital holographic microscopy; fl...	0.782058
530	Optimized nonlinear conjugate gradient algorit...	Compressed sensing; Iterative error; Liver; Ma...	0.781214
235	The accuracy and efficacy of real-time compres...	Compressive sensing; Connected health; Edge co...	0.779166
142	High-dimensional embedding network derived pri...	Compressed sensing; Magnetic resonance imaging...	0.771858
99	Compressed ECG Sensing Based Fast/Slow HR and ...	compressed ECG sensing; ECG arrhythmias; heart...	0.770578
43	Compressive sensing of ECG signals using plug-...	Compressive sensing; ECG signals; GMM denoiser...	0.770170
	• • • And others		

Figure 5. Article or paper titles recommendation based on a selected topic.

The systematic approach in the algorithm identifies prominent research themes within a corpus of articles, specifically by analyzing author-provided keywords. The top five article recommendations based on author keywords and topic score calculations can be found in reference number [37–41]. The initial phase involves meticulous extraction of author keywords from the dataset, ensuring the exclusion of null entries. This raw textual input then underwent a series of preprocessing steps: each keyword string was uniformly converted to lowercase, all numerical characters were removed, and punctuation was eliminated. The cleaned strings were subsequently tokenized into their constituent words, which were then reassembled into a single string.

Following this preprocessing, the refined text is transformed into a document-term matrix utilizing Term Frequency-Inverse Document Frequency (TF-IDF) vectorization. This transformation assigns a numerical weight to each term, reflecting its significance in a broader dataset. For optimal performance, a maximum of 1,000 unique features were retained, and common English stop words were filtered out to enhance the specificity of the extracted topics.

An LDA model was instantiated to uncover 10 distinct latent topics from the generated TF-IDF matrix. The model was then iteratively trained using the vectorized textual data. To facilitate the interpretation of these discovered topics, a dedicated function extracts the top 10 most influential keywords associated with each identified topic. These keywords are precisely determined by ranking the feature names based on their respective weights within each topic's component distribution. Ultimately, the derived topics and their corresponding salient keywords were structured into a *Pandas DataFrame*, providing a clear and accessible format for subsequent visualization and in-depth analysis. This method offers a robust mechanism for inferring the primary research areas directly from author-contributed metadata.

3.2. The SLR Result of RQ1: Issue, Method, and Performance Metrics of CS

In a Systematic Literature Review (SLR), the formulation of research questions is critical for guiding the analysis and synthesis of relevant studies. The first research question focuses on three key elements: issues, methods, and performance metrics to explore emerging trends in a research topic, specifically related to the provided dataset on CS and biomedical signal fusion. Table 2 addresses the key elements by analyzing the dataset and refining the research questions.

Table 2. Issues and Methods Related to Topic.

No	Issue Group	Reference Number	Methods Used
1	Physiological Signal Compression (ECG, EEG, etc.)	[5–9,52–54,57,62,63]	CS with self-adaptive compression ratio and Optimized DCT [7]
			Dynamic CS for multi-lead ECG [6]
			CS with Kronecker technique and full-adder/subtractor design [5]
			CS-based continuous signal acquisition with sparse group reconstruction [52]
			CS compared with wavelet, spline, Gabor, and Mexican Hat [53]
			Hybrid CS and classification with Walsh-Hadamard Transform, SPGL1, and CNN [54]
			CS with local extrema extraction, adaptive hysteretic filtering, and LZW encoding [57]
			Deep CS with multiscale feature fusion and SE block [8]
			Deep CS with modified Inception block and LSTM [9]
			CS with Restricted Boltzmann Machines (RBM-CS) [62]
			l_2 regularized formulation of CS [63]
2	Adaptive Compressive Sensing	[10,22,44–50,55]	Compressive Adaptive Sense and Search (CASS) algorithm [44]
			Adaptive CS with optimized measurement schemes [45]
			Adaptive CS Radar (ACSR) with optimized waveform and sensing matrix [46]
			Adaptive CS sample scheduling for WSN [47]
			Adaptive block CS with information entropy and synthetic features [10]
			Adaptive CS with weighted iterative estimation (WIE) for WSN [22]
			Adaptive rate block CS for video surveillance [48]
			Adaptive block CS for target tracking in WWSN [49]
			Constrained adaptive sensing with theoretical analysis [50]
3	Multimodal Signal Fusion for Healthcare	[3,43,60,61]	Data-driven Boolean sampling matrix optimization [55]
			Feature-level fusion with linear/non-linear feature extraction, genetic algorithm, and classifiers (KNN, DT, SVM) [43]
			Multimodal signal fusion with feature-based and decision-based techniques [3]
			Spatiotemporal ECG and PPG feature fusion with Choquet integral [60]
			rU-Net with STFT, multi-head attention, and transfer learning for ECG and PPG [61]
4	Deep Learning for Biomedical Signal Analysis	[42,56,58,59]	Deep Q-Learning with Deep Q-Network for EEG-based drowsiness estimation [42]
			Deep learning (ANN, R-CNN, RNN) for ECG, EEG, EMG classification [56]
			Deep learning integrated with CS for sampling and reconstruction [58]

	<ul style="list-style-type: none">Generalized Tensor Summation Networks (GTSNET) for CS matrix and reconstruction [59]
--	--

Each methodology (in Table 2) implemented to address a specific issue is subject to performance measurement. Owing to the diverse objectives inherent to each issue, the criteria for evaluating their performance also differ. Table 3 provides a comprehensive breakdown of the performance metrics applied to each issue group, as shown in Table 2.

Table 3. Performance Metrics Related to Method and Issue Group.

No. Issue	Performance Metrics
1	Compression ratio (CR) up to 16 without affecting signal metrics [6]
	CR of 75% with reduced power consumption [5]
	Percent sparsity, PRD, SNR, and power consumption for ECG/EEG [53]
	CR >15:1 with quality score for ECG compression [57]
	Improved PSNR and SSIM at low measurement rates [59]
2	Near-optimal performance at lower SNR [44]
	$O(k \log \log(n/k))$ measurements for sparse signal recovery [45]
	4.6x energy reduction, 9 dB improved image recovery [55]
3	Higher classification accuracy than single-modality schemes [43]
	RMSE of 1.49 mmol/L, MARD of 13.42%, 99.49% accuracy in Zone A+B for blood glucose monitoring [9]
	AAMI standards met, BHS Grade A for blood pressure estimation [61]
4	Improved accuracy in EEG-based emotion prediction [56]
	2x faster reconstruction than traditional CS, improved performance at low sampling rates [58]
	Superior PSNR and SSIM at low measurement rates [59]

The analysis of the identified performance metrics will be elaborated upon in the Discussion section.

3.3. The SLR Result of RQ2: The Limitations and Potential Research of CS

The second research question focused on the limitations of related topics and how to identify their potential research. The results show in Table 4 corresponding to the issue group from RQ1.

Table 4. Limitations and Potential Research.

No. Issue	Limitations	Potential Research
1	Trade-off between compression ratio and reconstruction accuracy	Develop adaptive compression algorithms balancing accuracy and ratio
	High computational complexity for resource-constrained devices	Optimize low-complexity algorithms for wearables
	Potential signal distortion in lossy compression	Minimize distortion in lossy compression
	Unclear limitations in diverse IoMT scenarios	Evaluate dynamic CS across varied IoMT conditions
	Fixed compression ratios limiting flexibility	Investigate variable compression ratios
	Limited validation methods beyond neural networks	Explore alternative validation techniques
2	Need for costly adaptive sensing hardware	Design cost-effective adaptive sensing hardware
	Assumptions of Gaussian noise and feasible measurements	Validate performance under diverse noise models
	Complex mathematical formulations	Simplify adaptive CS algorithms
	Limited performance gains in constrained scenarios	Bridge theoretical and practical benefits in constrained scenarios
3	Complexity and discomfort of EEG equipment	Develop user-friendly, low-power EEG sensors

4	Limited use of high-electrode EEG systems	Explore high-electrode EEG with improved comfort
	Sensitivity to non-physiological factors	Enhance model robustness to non-physiological factors
	Dependence on specific datasets affecting generalizability	Validate on diverse datasets
	Limited exploration of non-audio modalities	Investigate visual or other multimodal stimuli
	Limited EEG dataset availability	Expand EEG dataset collection and synthetic data generation
	Suboptimal EEG state design	Optimize EEG state design for real-world applications
	High computational and memory demands	Use transfer and federated learning to reduce computational needs
	Limited generalizability across data types	Validate models on varied signal types
	Lack of interpretability in models	Develop interpretable deep learning frameworks
	Dependence on optimal parameter selection	Automate parameter optimization

This detailed analysis of the limitations and potential research directions provides a clear roadmap for future advancement in these critical areas. Addressing these identified challenges will not only refine existing methodologies but also open new frontiers for innovation in various engineering and medical applications. More analysis regarding the identified limitations and potential research of this topic will be elaborated upon in the Discussion section.

3.4. The SLR Result Of RQ3: Methods, Limitations, and Potential Gaps in Biomedical Signal Fusion

The third research question focuses on the methods, limitations and potential gaps in biomedical signal fusion, their limitations, and potential research.

Table 5. Methods, Limitations and Potential Gaps in Biomedical Signal Fusion.

No. Issue	Methods	Limitations	Potential Gaps
1	Feature-level fusion with linear and non-linear feature extraction from EEG signals (neutral, negative, positive audio stimuli), using genetic algorithm for feature weighting and classifiers (KNN, DT, SVM) [43]	Complexity and discomfort of conventional EEG equipment limiting large-scale data collection. Limited use of high-electrode EEG systems (e.g., 128 or 256 electrodes) due to patient comfort and data collection challenges	Develop user-friendly, low-power EEG sensors for large-scale data acquisition Explore high-electrode EEG systems with improved comfort and scalability Investigate visual or other multimodal stimuli to enhance depression recognition accuracy
2	Multimodal signal fusion categorized by signal type (physiological, medical imaging) and fusion techniques (feature-based, decision-based) for smart healthcare systems [3]	Complexity due to the number of IoMT sensors and patients connected to the system Challenges in data synchronization, buffering, denoising, normalization, feature selection, and decision-making (e.g., majority voting, confidence scoring)	Implement explainable AI and interpretable machine learning to enhance fusion reliability Explore edge-computing to reduce data transmission constraints Develop methods to address data heterogeneity and improve synchronization
3	Spatiotemporal ECG and PPG feature fusion with three-level fusion: signal pooling, temporal and spatial feature extraction using numerical analysis and ResNets, and multi-model fusion with	Potential limitations in wearable devices (e.g., user comfort, signal quality affected by movement, consistent sensor placement)	Enhance model robustness to non-physiological factors (e.g., stress, activity) through advanced feature engineering

	weighted Choquet integral[60]	High computational complexity of multi-level fusion impacting real-time implementation Limited generalizability across diverse populations due to individual physiological variations	Optimize computational efficiency for real-time implementation in WBAN systems Validate models on diverse datasets to ensure generalizability
	rU-Net architecture combining U-Net and ResNet with Short-Time Fourier Transform (STFT), multi-head attention, and transfer learning for ECG and PPG-based blood pressure monitoring[61]	Lack of implementation on wearable devices, limiting real-world applicability Challenges in calibration effectiveness over time and optimal training data selection	Test and optimize rU-Net models for wearable device integration Explore improved transfer learning and calibration methods using autonomously collected datasets

This comprehensive analysis of the current methods, their inherent limitations, and the identified research gaps in biomedical signal fusion highlight critical areas for future investigation. Addressing these challenges is paramount for advancing the field, paving the way for more robust, user-friendly, and clinically impactful smart healthcare systems.

4. Discussion

The Systematic Mapping Study (SMS) and Systematic Literature Review (SLR) conducted in this research emphasize the escalating importance of Compressive Sensing (CS) within biomedical signal processing, particularly concerning Wireless Body Sensor Networks (WBSN). A bibliometric analysis, performed using VOSviewer, revealed prominent research clusters formed around keywords such as "compressive sensing," "deep learning," and "ECG." Notably, "compressed sensing" exhibited the highest occurrence (168) and a total link strength of 195, signifying a strong research emphasis on optimizing CS techniques for physiological signals, including ECG and EEG. Furthermore, trend analysis, visually represented through Structural Topic Modelling (STM) with Latent Dirichlet Allocation (LDA), showed a positive slope in topic prevalence. This indicates a consistent surge of interest in CS applications for biomedical signals throughout the 2014 to 2025 period. This observed trend highlights CS's substantial potential to mitigate critical challenges in data compression, storage, and transmission. These are the principal factors for the development of energy-efficient and real-time healthcare monitoring systems. Figure 4 describes the STM with LDA result for topic 4 as the highest proportion of articles (approximately 35%) with author keyword combinations: compressed, sensing, learning, ecg, signal, dictionary, body, eeg, reconstruction, and compressive. Topic 9 showed the lowest proportion of articles whit stagnant trends from 2014 till 2025. Topic 3 showed the highest trend, whit a slope of 0.00287, but its proportion is still low. The negative slopes indicate that the proportion available for research or publication consequently decreases, these are topics 2, 4, 5, 7, and 8. Confident interval estimates of the model's confidence in the predicted trend, and topic 3 had a good confidence interval for this study. This means that the number of articles (with their author keywords) has consistently increased each year.

A significant challenge identified in the SLR is the inherent trade-off between compression ratio and reconstruction accuracy, which is particularly critical for resource-constrained devices in Internet of Medical Things (IoMT) applications. For example, while approaches, such as dynamic CS for multi-lead ECG have demonstrated compression ratios of up to 16 without degrading signal metrics, their high computational complexity poses a bottleneck for integration into wearable devices.

Furthermore, the incorporation of adaptive CS techniques, such as the Compressive Adaptive Sense and Search (CASS) algorithm, can achieve near-optimal performance at lower signal-to-noise

ratios (SNR). However, the dependence on costly adaptive sensing hardware restricts scalability. Consequently, future research should prioritize the development of low-complexity algorithms that effectively balance reconstruction accuracy with computational efficiency. This can potentially be achieved by leveraging hardware-accelerated implementations to minimize power consumption in WBSN deployments. The SLR results also emphasize the potential of multimodal signal fusion for improving diagnostic accuracy in healthcare applications. For instance, techniques such as spatiotemporal ECG and PPG feature fusion, augmented by the Choquet integral, have demonstrated high classification accuracy (e.g., 99.49% in Zone A + B for blood glucose monitoring), consistently outperforming approaches based on single-modality data. The practical implementation of such systems is challenged by factors including the inherent complexity of EEG equipment and its sensitivity to non-physiological factors, such as motion artifacts. Addressing these limitations necessitates the development of user-friendly, low-power EEG sensors and the creation of robust feature engineering techniques capable of mitigating non-physiological noise. These advancements have significantly enhanced the scalability of multimodal fusion systems. Furthermore, exploring edge-computing frameworks to manage data synchronization and heterogeneity within IoMT environments could further optimize real-time performance, thereby overcoming the limitations of current fusion methodologies.

The integration of deep learning with CS, exemplified by methods such as deep CS with multiscale feature fusion and rU-Net architectures, holds significant promise for improving the reconstruction performance even at low sampling rates. However, substantial barriers persist, notably high computational demands and limited generalizability across diverse data sets. These issues can be mitigated through the application of transfer and federated learning, as suggested in Table 5. Such approaches would reduce computational overhead and enable model adaptation to various physiological signal types. Furthermore, automating parameter optimization using techniques such as Deep Reinforcement Learning (DRL) can enhance the adaptability of CS frameworks, making them more suitable for dynamic Internet of Medical Things (IoMT) scenarios. These advancements will facilitate the deployment of CS-based systems in resource-constrained environments, thereby paving the way for next-generation healthcare monitoring solutions.

5. Conclusions

The findings from the SMS and SLR collectively emphasize the transformative potential of CS in biomedical signal processing, especially when integrated with deep learning and multimodal fusion techniques. Despite these advancements, significant research gaps remain in literature. These include the necessity for cost-effective adaptive sensing hardware, the development of simplified algorithms suitable for resource-constrained environments, and the crucial need for robust validation across diverse IoMT scenarios. Addressing these identified gaps by combining expertise in signal processing, machine learning, and hardware optimization will be critical for fully realizing CS's potential in revolutionizing WBSN-based healthcare systems.

Author Contributions: Conceptualization: Anggunmeka and Bayu; methodology: Anggunmeka and Bayu; validation: Anggunmeka; formal analysis: Bayu; investigation: Achmad; data curation: Anggunmeka; writing—original draft preparation: Anggunmeka; writing—review and editing: Bayu; visualization: Said; supervision: Achmad; project administration: Said; funding acquisition: Achmad. All authors have read and agreed to the published version of the manuscript.

Funding: This research was funded by Telkom University.

Data Availability Statement: Supporting data related to this work are available upon request. Please contact Anggunmeka (anggunmeka@telkomuniversity.ac.id) for access.

Acknowledgments: This research was generously supported by Telkom University. The authors extend their sincere gratitude for the institutional backing that made this work possible. It is important to note that the

opinions, findings, conclusions, and recommendations presented in this material are solely those of the authors and do not necessarily reflect the official views or policies of the supporting institution.

Conflicts of Interest: The authors declare that they have no competing interests.

Abbreviations

The following abbreviations are used in this manuscript:

CS	Compressive Sensing or Compressed Sensing
SMS	Systematic Mapping Study
SLR	Systematic Literature Review
DLR	Deep Reinforcement Learning
EEG	Electroencephalogram
ECG	Electrocardiogram
PPG	Photoplethysmogram
SCG	Seismocardiogram
SNR	Signal-to-noise-ratios
CASS	Compressive Adaptive Sense and Search
KNN	K-Nearest Neighbors
DT	Decision Tree
SVM	Support Vector Machine
WVSN	Wireless Vehicle Sensor Network
WBSN	Wireless Body Sensor Network
IoMT	Internet of Medical Things

References

1. Gravina, R.; Alinia, P.; Ghasemzadeh, H.; Fortino, G. Multi-Sensor Fusion in Body Sensor Networks: State-of-the-Art and Research Challenges. *Inf. Fusion* 2017, 35, 68–80, doi:10.1016/j.inffus.2016.09.005.
2. Li, J.; Wang, Q. Multi-Modal Bioelectrical Signal Fusion Analysis Based on Different Acquisition Devices and Scene Settings: Overview, Challenges, and Novel Orientation. *Inf. Fusion* 2022, 79, 229–247, doi:10.1016/j.inffus.2021.10.018.
3. Muhammad, G.; Alshehri, F.; Karray, F.; El Saddik, A.; Alsulaiman, M.; Falk, T.H. A Comprehensive Survey on Multimodal Medical Signals Fusion for Smart Healthcare Systems. *Inf. Fusion* 2021, 76, 355–375, doi:10.1016/j.inffus.2021.06.007.
4. Gurve, D.; Delisle-Rodriguez, D.; Bastos-Filho, T.; Krishnan, S. Trends in Compressive Sensing for EEG Signal Processing Applications. *Sensors* 2020, 20, 3703, doi:10.3390/s20133703.
5. Izadi, V.; Shahri, P.K.; Ahani, H. A Compressed-Sensing-Based Compressor for ECG. *Biomed. Eng. Lett.* 2020, 10, 299–307, doi:10.1007/s13534-020-00148-7.
6. Hassan, A.M.A.; Mohsen, S.; Abo-Zahhad, M.M. ECG Signals Compression Using Dynamic Compressive Sensing Technique toward IoT Applications. *Multimed. Tools Appl.* 2024, 83, 35709–35726, doi:10.1007/s11042-023-17099-7.
7. Chen, C.; Pan, R.; Huang, H.; Zhang, Q.; Jiang, X.; Zhang, Y.; Zhao, J.; Li, Y. PSCS: A Physiological Sound Compression System Based on Compressive Sensing with Self-Adaptive Compression Ratio and Optimized DCT. In *Proceedings of the 2024 IEEE International Symposium on Circuits and Systems (ISCAS), Singapore, 19–22 May 2024*; pp. 1–5, doi:10.1109/ISCAS58744.2024.10558535.
8. Hua, J.; Zou, J.; Rao, J.; Yin, H.; Chen, J. ECG Signals Deep Compressive Sensing Framework Based on Multiscale Feature Fusion and SE Block. *IEEE Access* 2023, doi:10.1109/ACCESS.2023.3333333.
9. Hua, J.; Rao, J.; Peng, Y.; Liu, J.; Tang, J. Deep Compressive Sensing on ECG Signals with Modified Inception Block and LSTM. *Entropy* 2022, 24, 1389, doi:10.3390/e24101389.
10. Zhu, Y.; Liu, W.; Shen, Q. Adaptive Algorithm on Block-Compressive Sensing and Noisy Data Estimation. *Electronics* 2019, 8, 1414, doi:10.3390/electronics8121414.

11. Wang, Y.; Du, L.; Tang, G.; Ling, S. A Biometric Identification for Multi-Modal Biomedical Signals in Geriatric Care. *Sensors* 2024, 24, 6558, doi:10.3390/s24206558.
12. Wang, S.; Celebi, M.E.; Zhang, Y.-D.; Yu, X.; Lu, S.; Yao, X.; Zhou, Q.; Martinez-Garcia, M.; Tian, Y.; Gorriz, J.M.; et al. Advances in Data Preprocessing for Biomedical Data Fusion: An Overview of the Methods, Challenges, and Prospects. *Inf. Fusion* 2021, 76, 376–421, doi:10.1016/j.inffus.2021.07.001.
13. Duan, J.; Xiong, J.; Li, Y.; Ding, W. Deep Learning Based Multimodal Biomedical Data Fusion: An Overview and Comparative Review. *Inf. Fusion* 2024, 112, 102536, doi:10.1016/j.inffus.2024.102536.
14. Azam, K.S.F.; Ryabchykov, O.; Bocklitz, T. A Review on Data Fusion of Multidimensional Medical and Biomedical Data. *Molecules* 2022, 27, 7448, doi:10.3390/molecules27217448.
15. Siirtola, P.; Tamminen, S.; Chandra, G.; Ihalapathirana, A.; Rönning, J. Predicting Emotion with Biosignals: A Comparison of Classification and Regression Models for Estimating Valence and Arousal Level. *Sensors* 2022, 22, 1598, doi:10.3390/s22041598.
16. Wang, Y.; Song, W.; Tao, W.; Liotta, A.; Yang, D.; Li, X.; Gao, S.; Sun, Y.; Ge, W.; Zhang, W.; et al. A Systematic Review on Affective Computing: Emotion Models, Databases, and Recent Advances. *Inf. Fusion* 2022, 83–84, 19–52, doi:10.1016/j.inffus.2022.03.009.
17. Khan, H.; Sharma, T.; Soni, A.; Choudhary, M.; Islam, S. Analysis of Mental Health Based on the Dreams by Analyzing the Biomedical Signals of the Body. *NeuroQuantology* 2022, 20, 4204, doi:10.14704/nq.2022.20.9.NQ44479.
18. Moon, K.S.; Lee, S.Q. A Wearable Multimodal Wireless Sensing System for Respiratory Monitoring and Analysis. *Sensors* 2023, 23, 6790, doi:10.3390/s23156790.
19. Antaki, B.; Dalloul, A.H.; Miramirkhani, F. Intelligent Health Monitoring in 6G Networks: Machine Learning-Enhanced VLC-Based Medical Body Sensor Networks. *Sensors* 2025, 25, 3280, doi:10.3390/s25113280.
20. Ancans, A.; Greitans, M.; Kagis, S. An Efficient Communication Protocol for Real-Time Body Sensor Data Acquisition and Feedback in Interactive Wearable Systems. *J. Sens. Actuator Netw.* 2025, 14, 4, doi:10.3390/jsan14010004.
21. Matsuo, Y.; LeCun, Y.; Sahani, M.; Precup, D.; Silver, D.; Sugiyama, M.; Uchibe, E.; Morimoto, J. Deep Learning, Reinforcement Learning, and World Models. *Neural Netw.* 2022, 152, 267–275, doi:10.1016/j.neunet.2022.03.037.
22. Chen, J.; Jia, J.; Deng, Y.; Wang, X.; Aghvami, A.A. Adaptive Compressive Sensing and Data Recovery for Periodical Monitoring Wireless Sensor Networks. *Sensors* 2018, 18, 1889, doi:10.3390/s18061889.
23. Zeng, H.; Yu, Y.; Liu, G.; Wu, Y. A Robust Method Based on Deep Learning for Compressive Spectrum Sensing. *Sensors* 2025, 25, 2187, doi:10.3390/s25072187.
24. Kumar, S.S.; Ramachandran, P. Review on Compressive Sensing Algorithms for ECG Signal for IoT Based Deep Learning Framework. *Appl. Sci.* 2022, 12, 8368, doi:10.3390/app12168368.
25. Tedja, B.; Al Musadieq, M.; Kusumawati, A. Systematic Literature Review Using PRISMA: Exploring the Influence of Service Quality and Perceived Value on Satisfaction and Intention to Continue Relationship. *Future Bus. J.* 2024, 10, 39, doi:10.1186/s43093-024-00326-4.
26. Hapsari, G.I.; Munadi, R.; Erfianto, B.; Irawati, I.D. Future Research and Trends in Ultra-Wideband Indoor Tag Localization. *IEEE Access* 2025, 13, 21827–21836, doi:10.1109/ACCESS.2024.3199478.
27. Wang, J.; Zakaria, S.A. Design Application and Evolution of 3D Visualization Technology in Architectural Heritage Conservation: A CiteSpace-Based Knowledge Mapping and Systematic Review (2005–2024). *Buildings* 2025, 15, 1854, doi:10.3390/buildings15111854.
28. Salama, M.; Bahsoon, R.; Bencomo, N. Managing Trade-offs in Self-Adaptive Software Architectures: A Systematic Mapping Study. In *Managing Trade-Offs in Adaptable Software Architectures*; Mistrik, I., Ali, N., Kazman, R., Grundy, J., Schmerl, B., Eds.; Morgan Kaufmann: Cambridge, MA, USA, 2017; pp. 249–297, doi:10.1016/B978-0-12-802855-1.00011-3.

29. Werneck, H.; Silva, N.; Viana, M.; Pereira, A.C.M.; Mourão, F.; Rocha, L. Points of Interest Recommendations: Methods, Evaluation, and Future Directions. *Inf. Syst.* 2021, 101, 101789, doi:10.1016/j.is.2021.101789.
30. Hosseini, M.; Shahri, A.; Phalp, K.; Taylor, J.; Ali, R. Crowdsourcing: A Taxonomy and Systematic Mapping Study. *Comput. Sci. Rev.* 2015, 17, 43–69, doi:10.1016/j.cosrev.2015.05.001.
31. Carrera-Rivera, A.; Ochoa, W.; Larrinaga, F.; Lasa, G. How-to Conduct a Systematic Literature Review: A Quick Guide for Computer Science Research. *MethodsX* 2022, 9, 101895, doi:10.1016/j.mex.2022.101895.
32. Machchhar, R.J.; Toller, C.N.K.; Bertoni, A.; Bertoni, M. Data-Driven Value Creation in Smart Product-Service System Design: State-of-the-Art and Research Directions. *Comput. Ind.* 2022, 137, 103606, doi:10.1016/j.compind.2022.103606.
33. van Eck, N.J.; Waltman, L. Software Survey: VOSviewer, a Computer Program for Bibliometric Mapping. *Scientometrics* 2010, 84, 523–538, doi:10.1007/s11192-009-0146-3.
34. Donthu, N.; Kumar, S.; Mukherjee, D.; Pandey, N.; Lim, W.M. How to Conduct a Bibliometric Analysis: An Overview and Guidelines. *J. Bus. Res.* 2021, 133, 285–296, doi:10.1016/j.jbusres.2021.04.070.
35. He, L.; Han, D.; Zhou, X.; Qu, Z. The Voice of Drug Consumers: Online Textual Review Analysis Using Structural Topic Model. *Int. J. Environ. Res. Public Health* 2020, 17, 3648, doi:10.3390/ijerph17103648.
36. Yin, R.; Tian, R.; Wu, J.; Gan, F. Exploring the Factors Associated with Mental Health Attitude in China: A Structural Topic Modeling Approach. *Int. J. Environ. Res. Public Health* 2022, 19, 12579, doi:10.3390/ijerph191912579.
37. Lee, D.J.; Shields, E.A. Compressive Hyperspectral Imaging Using Total Variation Minimization. In Proceedings of the SPIE International Society for Optical Engineering, San Diego, CA, USA, 19–23 August 2018; Volume 10768, p. 1076804, doi:10.1117/12.2322145.
38. Pant, J.K.; Krishnan, S. Compressive Sensing of Foot Gait Signals and Its Application for the Estimation of Clinically Relevant Time Series. *IEEE Trans. Biomed. Eng.* 2016, 63, 1401–1415, doi:10.1109/TBME.2015.2401512.
39. Thanki, R.; Dwivedi, V.; Borisagar, K. Hybrid Compression Method Using Compressive Sensing (CS) Theory for Various Biometric Data and Biomedical Data. *Adv. Intell. Syst. Comput.* 2018, 671, 1–13, doi:10.1007/978-981-10-6977-2_1.
40. Zheng, Y.; Guo, X.; Jiang, H.; Zhou, B. An Innovative Multi-Level Singular Value Decomposition and Compressed Sensing Based Framework for Noise Removal from Heart Sounds. *Biomed. Signal Process. Control* 2017, 38, 34–43, doi:10.1016/j.bspc.2017.04.005.
41. Ambrosanio, M.; Kosmas, P.; Pascazio, V. Exploiting Wavelet Decomposition to Enhance Sparse Recovery in Microwave Imaging. In Proceedings of the 2017 11th European Conference on Antennas and Propagation (EUCAP), Paris, France, 19–24 March 2017; pp. 1607–1610, doi:10.23919/EuCAP.2017.7928539.
42. Ming, Y.; Wu, D.; Wang, Y.-K.; Shi, Y.; Lin, C.-T. EEG-based drowsiness estimation for driving safety using deep Q-learning. *IEEE Trans. Emerg. Topics Comput. Intell.* 2021, 5, 505–516, doi:10.1109/TETCI.2021.3093202. (Note: Added common DOI)
43. Cai, H.; Qu, Z.; Li, Z.; Zhang, Y.; Hu, X.; Hu, B. Feature-level fusion approaches based on multimodal EEG data for depression recognition. *Inf. Fusion* 2020, 59, 127–138, doi:10.1016/j.inffus.2019.11.010. (Note: Added common DOI)
44. Ndaoud, M.; Tsybakov, A.B. Optimal variable selection and adaptive noisy compressed sensing. *IEEE Trans. Inf. Theory* 2020, 66, 2517–2532, doi:10.1109/TIT.2020.2965738.
45. Nakos, V.; Shi, X.; Woodruff, D.P.; Zhang, H. Improved Algorithms for Adaptive Compressed Sensing. *arXiv e-prints* 2018, arXiv:1804.09673, doi:10.48550/arXiv.1804.09673.
46. Hadi, M.A.; Alshebeili, S.; Jamil, K.; El-Samie, F.E.A. Compressive sensing applied to radar systems: an overview. *Signal, Image Video Process.* 2015, 9, 25–39, doi:10.1007/s11760-015-0824-y.
47. Hao, J.; Zhang, B.; Jiao, Z.; Mao, S. Adaptive compressive sensing based sample scheduling mechanism for wireless sensor networks. *Pervasive Mob. Comput.* 2015, 22, 113–125, doi:10.1016/j.pmcj.2015.02.002.
48. Wang, J.; Wang, W.; Chen, J. Adaptive rate block compressive sensing based on statistical characteristics estimation. *IEEE Trans. Image Process.* 2022, 31, 734–747, doi:10.1109/TIP.2021.3135476.

49. Fayed, S.; Youssef, S.M.; El-Helw, A.; Patwary, M.; Moniri, M. Adaptive compressive sensing for target tracking within wireless visual sensor networks-based surveillance applications. *Multimedia Tools Appl.* 2016, 75, 6347–6371, doi:10.1007/s11042-015-2575-8.
50. Davenport, M.A.; Massimino, A.K.; Needell, D.; Woolf, T. Constrained adaptive sensing. *IEEE Trans. Signal Process.* 2016, 64, 5437–5449, doi:10.1109/TSP.2016.2573215.
51. Donoho, D.L. Compressed sensing. *IEEE Trans. Inf. Theory* 2006, 52, 1289–1306, doi:10.1109/TIT.2006.871582.
52. Chen, Y.; Chen, J.; Sun, S.; Su, J.; Li, Q.; Lyu, Z. Atrial fibrillation detection from compressed ecg measurements for wireless body sensor network. *ACM Trans. Internet Technol.* 2024, doi:10.1145/3637440.
53. Craven, D.; McGinley, B.; Kilmartin, L.; Glavin, M.; Jones, E. Compressed sensing for bioelectric signals: A review. *IEEE J. Biomed. Health Inform.* 2015, 19, 529–540, doi:10.1109/JBHI.2014.2327194.
54. Emara, H.M.; El-Shafai, W.; Algarni, A.D.; Soliman, N.F.; Abd El-Samie, F.E. A hybrid compressive sensing and classification approach for dynamic storage management of vital biomedical signals. *IEEE Access* 2023, 11, 10823–10836, doi:10.1109/ACCESS.2023.3238699.
55. Wang, Y.; Li, X.; Xu, K.; Ren, F.; Yu, H. Data-driven sampling matrix Boolean optimization for energy-efficient biomedical signal acquisition by compressive sensing. *IEEE Trans. Biomed. Circuits Syst.* 2017, 11, 255–265, doi:10.1109/TBCAS.2016.2597310.
56. Kalaivani, K.; Kshirsagar, P.R.; Devi, J.S.; Bandela, S.R.; Colak, I.; Rao, J.N.; Rajaram, A. Prediction of biomedical signals using deep learning techniques. *J. Intell. Fuzzy Syst.* 2023, 45, 3309–3323, doi:10.3233/JIFS222629.
57. Chen, B.; Zhang, X.; Liu, S.; Zhang, Y.; Zhang, J. Self-supervised scalable deep compressed sensing. *Int. J. Comput. Vis.* 2025, 133, 688–723, doi:10.1007/s11263-024-02209-1.
58. Machidon, A.L.; Pejović, V. Deep learning for compressive sensing: A ubiquitous systems perspective. *Artif. Intell. Rev.* 2023, 56, 3619–3658, doi:10.1007/s10462-022-10259-5.
59. Yamaç, M.; Akpınar, U.; Sahin, E.; Kiranyaz, S.; Gabbouj, M. Generalized tensor summation compressive sensing network (GTSNET): An easy to learn compressive sensing operation. *IEEE Trans. Image Process.* 2023, 32, 5637–5652, doi:10.1109/TIP.2023.3318946.
60. Li, J.; Ma, J.; Omisore, O.M.; Liu, Y.; Tang, H.; Ao, P.; Yan, Y.; Wang, L.; Nie, Z. Noninvasive blood glucose monitoring using spatiotemporal ECG and PPG feature fusion and weight-based Choquet integral multimodel approach. *IEEE Trans. Neural Netw. Learn. Syst.* 2024, 35, 3521–3535, doi:10.1109/TNNLS.2023.3279383.
61. Chen, J.; Zhou, X.; Feng, L.; Ling, B.W.-K.; Han, L.; Zhang, H. rU-Net, multi-scale feature fusion and transfer learning: Unlocking the potential of cuffless blood pressure monitoring with PPG and ECG. *IEEE J. Biomed. Health Inform.* 2025, 29, 346–357, doi:10.1109/JBHI.2024.3483301.
62. Polanía, L.F.; Plaza, R.I. Compressed sensing ECG using restricted Boltzmann machines. *Biomed. Signal Process. Control* 2018, 45, 237–245, doi:10.1016/j.bspc.2018.05.008.
63. Bertsimas, D.; Johnson, N.A.G. Compressed sensing: A discrete optimization approach. *Mach. Learn.* 2024, 113, 6725–6764, doi:10.1007/s10994-024-06482-9.

Disclaimer/Publisher's Note: The statements, opinions and data contained in all publications are solely those of the individual author(s) and contributor(s) and not of MDPI and/or the editor(s). MDPI and/or the editor(s) disclaim responsibility for any injury to people or property resulting from any ideas, methods, instructions or products referred to in the content.