

Geochemical, Mineralogical and Morphological Characterisation of Road Dust and Associated Health Risks

Carla Candeias¹, Estela Vicente², Mário Tomé³, Fernando Rocha¹, Paula Ávila⁴,
Célia Alves^{2*}

¹Geobiosciences, Geotechnologies and Geoengineering Research Centre (GeoBioTec),
Department of Geosciences, University of Aveiro, 3810-193 Aveiro, Portugal

²Centre for Environmental and Marine Studies (CESAM), Department of Environment,
University of Aveiro, 3810-193 Aveiro, Portugal

³School of Technology and Management (ESTG), Polytechnic Institute of Viana do Castelo,
Avenida do Atlântico, nº 644, 4900-348 Viana do Castelo, Portugal

⁴LNEG, National Laboratory of Energy and Geology, São Mamede de Infesta, Portugal

* Correspondence: celia.alves@ua.pt

Abstract: Road dust resuspension, especially the particulate matter fraction below 10 µm (PM₁₀), is one of the main air quality management challenges in Europe. Road dust samples were collected from representative streets (suburban and urban) of the city of Viana do Castelo, Portugal. PM₁₀ emission factors (mg veh⁻¹ km⁻¹) ranging from 49 (asphalt) to 330 (cobble stone) were estimated by means of the United States Environmental Protection Agency method. Two road dust fractions (< 0.074 mm and from 0.0074 to 1 mm) were characterised for their geochemical, mineralogical and morphological properties. In urban streets, road dusts reveal the contribution from traffic emissions, with higher concentrations of e.g. Cu, Zn, and Pb. In the suburban area, agriculture practices likely contributed to As concentrations of 180 mg kg⁻¹ in the finest road dust fraction. Samples are primarily composed of quartz, but also of muscovite, albite, kaolinite, microcline, Fe-enstatite, graphite and amorphous content. Particle morphology clearly shows the link with natural and traffic related materials, with well-formed minerals and irregular aggregates. The hazard quotient suggests a probability to induce non-carcinogenic adverse health effects in children by ingestion of Zr. Arsenic in the suburban street represents a human health risk of 1.58 × 10⁻⁴.

Keywords: road dust, traffic, PM₁₀ emission factors, Enrichment Index, human health risk

1. Introduction

Particulates that are deposited on a road, usually called “road sediments”, “street dust” or “road dust”, are significant pollutants in the urban environment because they contain high levels of toxic metals and organic contaminants such as polycyclic aromatic hydrocarbons [1,2]. These materials can be pulverised by the passing traffic and become aerolisable, making up a significant fraction of atmospheric particles. Another process contributing to the atmospheric particle loads is the resuspension of road dust, which is due to traffic induced turbulence, tyre friction or the action of the wind. Amato et al. [3] reported that local dust accounted for 7–12% of the particulate matter < 10 µm (PM₁₀) concentrations at suburban and urban background sites in southern European cities and 19% at a traffic site, revealing the contribution from road dust resuspension. In the case of particulate matter < 2.5 µm (PM_{2.5}), the percentages decreased to 2–7% at suburban and urban background sites and to 15% at the traffic site. Results for southern Spain indicated that road dust increased PM₁₀ levels on average by 21–35% at traffic sites, 29–34% at urban background sites heavily affected by road traffic emissions, 17–22% at urban-industrial sites and 9–22% at rural sites [4]. In the urban area of Lanzhou, China, fugitive road dust was found to contribute to 24.6% of total PM_{2.5} emissions [5]. In Harbin, located at the north region of China, road dust represented 7 to 26% of PM₁₀ [6]. In Delhi, road dust is the largest contributor to PM₁₀, accounting for 35.6–65.9% [7]. As motor exhaust emissions decay as a result of increasingly strict limits, the relative importance of emissions from resuspension and wear (brakes, tyres and road pavement) will grow. These emissions are recognised as non-exhaust sources. It has been estimated that in 2020 non-exhaust sources will represent about 90% of total road traffic emissions [8].

Long-term exposure to traffic-generated dust was estimated to cause every year 1.5 to 2 million premature deaths (mostly women and children) in low-income countries [9]. There is increasing awareness and concern of the potential adverse impacts of dust on health in high- and middle-income countries. A systematic literature review of articles on road dust and its effects on health was recently carried out by Khan and Strand [2]. The components of road dust particles have been associated with multiple health effects, in particular on the respiratory and cardiovascular systems. The list of health effects reported in the reviewed

articles included chronic obstructive pulmonary disease, asthma, allergy, carcinoma, emergency cardiovascular disease issues, increased mortality due to cardiovascular disease, low birth weight and non-specific carcinoma. Numerous studies on the costs and efficacy of various products (e.g. suppressants) aimed at reducing road dust have been undertaken in the USA, Canada, Australia, New Zealand, South Africa, and several European countries [9–12].

The amount of dust that is generated and then re-settles on the road surface depends on various factors including traffic speed, vehicle weight, local road conditions and rainfall. In regions with scarce precipitation, such as the Mediterranean countries, road dust resuspension is one of the major sources triggering PM₁₀ exceedances. The composition of dust presents huge geographical and seasonal variations, so it is difficult to create a universal chemical fingerprint for this source [13]. To more accurately apportion the contribution of road dust to the atmospheric particulate matter levels, to better assess health risks, and to establish cause-effect relationships by seeking potentially toxic constituents, specific road dust chemical profiles should be obtained for each region or location. Moreover, to account for this source in pollutant inventories, appropriate emission factors are required. In Europe, some information on the chemical composition, mainly elemental, of resuspendable road dust samples from Barcelona, Girona and Zurich [14], four of the most polluted Polish cities [15], Oporto [1], and Paris [16], have been documented. This paper aims to present not only emission factors and the chemical composition, but also the mineralogical and morphological characteristics of road dust, as well as an assessment of health risks, in a medium-sized city with low pollution levels for which no previous study has been conducted.

2. Methodologies

2.1. Sampling

Road dust samples were collected in September and October 2018 on representative streets of Viana do Castelo (latitude: 41° 41' 35.63" N; longitude: -8° 49' 58.33" W), the most northern Atlantic city in Portugal with a population of about 40,000 in the most central urbanised area, although the municipality as a whole reaches 90,000 inhabitants. The city is located between Santa Luzia hill and the mouth of the river Lima. Its major industries are related to naval construction and repair, with one of the few large shipyards still in operation.

It is also home to a large cluster of wind green electricity and car-parts industries. The old downtown streets are closed to traffic.

Three streets were selected for road dust sampling:

- S1) suburban context - Rua Alto Xisto is a street with cobbled pavement made of granite cubes in a residential area on the outskirts of the city. One side of the street consists of terraced houses. The other side is flanked by an agricultural farm with some animals, and vineyard, corn, and potato cultivation;
- S2) urban context - Local road within the campus of the Higher School of Technology and Management. It is composed of stone mastic asphalt pavement and located a few meters from the beach and the shipyards;
- S3) urban context - Avenida Combatentes da Grande Guerra is a central artery connecting to the train station. It is an avenue with shops, services and an elementary school. Its cobbled pavement is made of granite cubes.

Road dust was collected on delimited lane sections using a vacuum cleaner, following the procedure described by the United States Environmental Protection Agency (USEPA) in its AP-42 document [17].

2.2. Geochemical, Mineralogical and Morphological Characterisation

After sampling, the vacuum cleaner bags were stored in polyethylene bags and brought to the laboratory, where the USEPA methodology for analysis of surface/bulk dust loading samples was followed [18]. Samples were sieved with standard Taylor screens, dried at ~40 °C, and weighted in a microbalance with 1 µg sensitivity. While particles > 1 mm were rejected, the fraction < 0.074 mm (F1) and that between 0.0074 and 1 mm (F2) were retained for further analyses.

The chemical composition of the road dust fractions was determined by X-ray Fluorescence (XRF) using a Panalytical Axios PW4400/40 X-ray fluorescence wavelength dispersive spectrometer. Mineralogy was determined by X-ray Diffraction (XRD) using a Panalytical X'Pert-Pro MPD diffractometer, with a Cu K α radiation at 45 kV, 40 mA, and with a step size of 0,02°2 θ , in 2-90° 2 θ angle range. A Hitachi S-4100 scanning electron microscope (SEM) equipped with a Bruker Quantax 400 Energy Dispersive Spectrometer (EDS) was used for point and area chemical analyses. Particle size distributions of road dusts were determined

by X-ray sedimentation technique with a Sedigraph III Plus grain size analyser from Micromeritics. This technique for determining the relative mass distribution of a sample by particle size is based on two physical principles: sedimentation theory (Stokes' law) and the absorption of X-radiation (Beer-Lambert law). Precision and accuracy of analyses and digestion procedures were monitored using internal standards, certified reference material and quality control blanks.

2.3. Estimation of Emission Factors

Road dust emission factors (EFs) were estimated using the equation outlined in the AP-42A document of USEPA [19] for paved roads:

$$EF = k (sL/2)^{0.65} \times (W/3)^{1.5} - C \quad (1)$$

where:

EF = PM_{10} emission factor ($g \text{ veh}^{-1} \text{ km}^{-1}$),

k = particle size multiplier for particle size range and units of interest ($0.46 \text{ g veh}^{-1} \text{ km}^{-1}$ for PM_{10}),

s = surface material silt content, defined as particles that pass through a 200-mesh screen, which corresponds to $74 \mu\text{m}$ (%),

L = surface material loading, defined as mass of particles per unit area of the travel surface ($g \text{ m}^{-2}$),

W = average weight (tons) of the vehicles travelling the road (a value of 2 tons was assumed),

C = emission factor for 1980's vehicle fleet exhaust, brake wear and tyre wear ($0.1317 \text{ g veh}^{-1} \text{ km}^{-1}$ for PM_{10}).

2.4. Enrichment Index

The enrichment index (EI) of an element is based on its concentration and the concentration of a reference element. The latter is chosen based on its low occurrence variability in order to identify geogenic and anthropogenic contributions. Due to the

abundant natural occurrence on Earth's crust, Al was selected for this study. EI was calculated as follows:

$$EI_x = (X/C_{ref})_{sample} / (X/C_{ref})_{crust} \quad (2)$$

with EI_x as the enrichment index of the element X, X the concentration of the element and C_{ref} the concentration of the reference element (Al). The Earth's crust individual elemental composition was taken from Riemann and Caritat [20]. $EI < 1$ indicates no enrichment (natural contribution), $1 < EI < 3$ minor anthropogenic enrichment, $3 \leq EI < 5$ moderate anthropogenic enrichment, $5 \leq EI < 10$ moderately severe anthropogenic enrichment, $10 \leq EI < 25$ severe anthropogenic enrichment, $25 \leq EI < 50$ very severe anthropogenic enrichment, and $EI \geq 50$ extremely severe anthropogenic enrichment [21].

2.4. Human Health Risk Assessment of Exposure to Potential Toxic Elements in Road Dust

A human health risk assessment assumes that residents, both children and adults, are directly exposed to potential toxic elements through three different routes: ingestion, dermal absorption and inhalation of particles [22–24]. For road dust, it was assumed that intake rates and particle emission are similar to those established for soils. Equations (3) to (5) were used to estimate the chronic daily intake (CDI_{route} , ingestion and dermal in $\text{mg kg}^{-1} \text{d}^{-1}$; inhalation in mg m^{-3} for non-carcinogenic effects, and $\mu\text{g m}^{-3}$ for carcinogenic effects) of each exposure route and for separated elements:

$$CDI_{\text{ing-nc}} = \frac{C \times \text{IngR} \times EF \times ED}{BW \times AT_{nc}} \times 10^{-6} \quad (3)$$

$$CDI_{\text{drm-nc}} = \frac{C \times SA \times SAF \times DA \times EF \times ED}{BW \times AT_{nc}} \times 10^{-6} \quad (4)$$

$$CDI_{\text{inh-nc}} = \frac{C \times \text{InhR} \times EF \times ED}{PEF \times BW \times AT_{nc}} \quad (5)$$

where, C (mg kg^{-1}) is the concentration of the element in road dust, IngR is the ingestion rate (200 and 100 mg d^{-1} for children and adults, respectively), InhR is the inhalation rate (7.6 and $20 \text{ m}^3 \text{d}^{-1}$ for children and adults, respectively), EF is the exposure frequency (180 d yr^{-1}), ED is the exposure duration (6 and 24 years for non-carcinogenic effects in children and adults,

respectively, and 70 years is the lifetime for carcinogenic effects), BW is the average body weight (15 and 70 kg for children and adults, respectively), AT_{nc} is the averaging time for non-carcinogenic effects ($AT \text{ days} = ED \times 365$), SA is the exposed skin area (2800 and 5700 cm² for children and adults, respectively), SAF is the skin adherence factor (0.2 and 0.07 mg cm⁻² for children and adults, respectively), DA is the dermal absorption factor (0.03 for As and 0.001 for other elements), and PEF is the particulate emission factor ($1.36 \times 10^9 \text{ m}^3 \text{ kg}^{-1}$) [22–26].

For each element and route, the non-cancer toxic risk was estimated by computing the Chronic Hazard Quotient (HQ , Equation (6)) for systemic toxicity [24]. A HQ less than or equal to 1 indicates that adverse effects are not likely to occur, and thus can be considered to have negligible hazard, while $HQ > 1$ suggests that there is a high probability of non-carcinogenic effects to occur. To estimate the overall developing hazard of non-carcinogenic effects, it is assumed that toxic risks have additive effects. Therefore, it is possible to calculate the cumulative non-carcinogenic hazard index (HI), which corresponds to the sum of HQ for each pathway (Equation (7)) [27].

$$HQ_{route} = \frac{CDI_{route}}{R_f D_{route}} \quad (6)$$

$$HI = \sum HQ = HQ_{ing} + HQ_{drm} + HQ_{inh} \quad (7)$$

with $R_f D$ being the chronic reference dose (values estimated as given in RAIS) [24].

The probability of an individual to develop any type of cancer over his lifetime (Risk), as a result of exposure to the carcinogenic hazards, was computed for each route according to Equation (8). The carcinogenic Total Risk is the sum of risk for each route (Equation (9)). A cancer risk below 1×10^{-6} is considered insignificant, being this value the carcinogenic target risk. A risk above 1×10^{-4} (a probability of 1 in 10 000 of an individual developing cancer) is considered unacceptable[22–24,27]:

$$\text{Risk}_{route} = CDI_{route} \times CSF_{route} \quad (8)$$

$$\begin{aligned} \text{Total Risk} &= \sum \text{Risk} = \text{Risk}_{ing} + \text{Risk}_{drm} + \text{Risk}_{inh} \\ &= CDI_{ing-ca} \times CFS_{ing} + CDI_{inh-ca} \times IUR + \frac{CDI_{drm-ca} \times CSF_{ing}}{ABS_{gi}} \end{aligned} \quad (9)$$

$$\begin{aligned}
CDI_{ing-ca} &= \frac{C \times IngR_{adj} \times EF}{AT_{ca}} \times 10^{-6} \\
IngR_{adj} &= \frac{ED_{child} \times IngR_{child}}{BW_{child}} + \frac{(ED_{resident} - ED_{child}) \times IngR_{adult}}{BW_{adult}} \\
CDI_{inh-ca} &= \frac{C \times EF \times ET \times ED}{PEF \times 24 \times AT_{ca}} \\
CDI_{drm-ca} &= \frac{C \times DA_d \times EF \times DSF_{adj}}{AT_{ca}} \times 10^{-6} \\
DSF_{adj} &= \frac{ED_{child} \times SA_{child} \times SAF_{child}}{BW_{child}} + \frac{(ED_{resident} - ED_{child}) \times SA_{adult} \times SAF_{adult}}{BW_{adult}}
\end{aligned}$$

where CSF is the chronic slope factor (ingestion, $(\text{mg kg}^{-1} \text{ d}^{-1})^{-1}$; dermal, CSF_{ing}/ABS_{gi}), ABS_{gi} is the gastrointestinal absorption factor, IUR is the chronic inhalation unit risk $((\mu\text{g m}^{-3})^{-1})$, DFS_{adj} is the soil dermal contact factor-age-adjusted ($362 \text{ mg yr kg}^{-1} \text{ d}^{-1}$), AT_{ca} is the averaging time carcinogenic effects ($AT \text{ days} = LT \times 365$) and ET is the exposure time (8 h d^{-1}) [27].

3. Results and Discussion

3.1. PM_{10} Emission Factors

For granite cube paved streets, very close PM_{10} emission factors were found: $277 \text{ mg veh}^{-1} \text{ km}^{-1}$ (central avenue, S3) and $330 \text{ mg veh}^{-1} \text{ km}^{-1}$ (street on the outskirts of the city, S1). On the asphalt paved street (S2), a much lower PM_{10} emission factor was obtained ($49 \text{ mg veh}^{-1} \text{ km}^{-1}$). Using an in-situ resuspension chamber, PM_{10} emission factors in the range 12.0 – $29.4 \text{ mg veh}^{-1} \text{ km}^{-1}$, averaging $18.6 \text{ mg veh}^{-1} \text{ km}^{-1}$, were determined for asphalt roads in the city of Oporto [1]. However, a much higher value of $1082 \text{ mg veh}^{-1} \text{ km}^{-1}$ was estimated for a cobbled pavement in the same city. Following the USEPA methodology, PM_{10} emission factors for typical urban roads in Milan within 13 – $32 \text{ mg veh}^{-1} \text{ km}^{-1}$ were recently reported, which were found to be in the central range of the literature values in Europe [28]. Based on micro-scale vertical profiles of the deposited mass, PM_{10} emission factors from 5.4 to $9.0 \text{ mg veh}^{-1} \text{ km}^{-1}$ were obtained at inner-roads of Paris, whilst a higher value was estimated for the ring road ($17 \text{ mg}^{-1} \text{ veh}^{-1} \text{ km}^{-1}$) [16]. Based on a literature review, Boulter et al. [29] summarised the available information on emissions from road dust resuspension for the United Kingdom, USA, central and northern Europe. Differences in emission factors may be associated with local factors, such as road pavement type, regularity of street washing and precipitation events. On the other hand, while in Southern Europe high solar radiation is usually recorded,

favouring the mobility of deposited particles, winter sanding or salting of roads and the use of studded tyres in Scandinavian and Alpine regions may promote the enhancement of road dust loadings. Road PM₁₀ emission factors documented for Europe are, in general, lower than those reported for USA. However, it must not be forgotten that American databases are older than European ones.

3.2. Geochemical Characterization of Dust and Enrichment Index

Road dusts are known for their heterogeneous mix with diverse natural and anthropogenic origins. The composition can vary depending on geographical location, resuspended soil, atmospheric deposition and anthropogenic sources, which include traffic related particles such as metallic components, eroded road pavement, but also building construction and demolition, and power generation [14,30].

Cluster analysis of the XRF results of the studied samples (S1 suburban environment influenced by agricultural activities; S2 and S3 urban streets) confirmed the chemical difference between the two analysed fractions (F1 with samples < 0.074 mm; F2 with sizes > 0.074 mm and < 1 mm). Elemental concentrations (Table 1) revealed Si as the most representative constituent, followed by Al > K > Fe > Ca > Na. The highest Si content was found in F2 (fraction > 0.074 mm and < 1 mm). The enrichment index suggests a low influence of anthropogenic activities in both size fractions ($EI < 1.5$). Crustal erosion and parent materials, e.g. Variscan granite parent rock, may also influence the concentrations of other elements, such as Fe, Al, Mg, Mn, Rb, Na, Ti, Mo, V and Zr [31]. Previous studies suggest that heavy metals such as Mn, V, Cu, Fe, Ni, Pb and Zn are linked to traffic emissions [32,33]. Low enrichment indices (< 3) were also obtained for manganese, indicating a major natural source. However, this element is used in fuel additives, aluminium based alloys offering a high corrosion resistance and formability, vehicle applications, such as inner panels, and heater and radiator tubes.

Table 1. Summary descriptive statistics of elements analysed in two size fractions of road dusts from three selected locations. Concentrations in mg kg⁻¹.

	< 0.074 mm		> 0.074 mm and < 1 mm	
	min-max	med±SD	min-max	med±SD
Al	64,013-95,874	75,836±13,150	54,873-67,749	66,241±5748
As	28-180	35±70	12-21	18±3.5
Ba	270-560	390±119	250-490	290±105
Br	37-62	49±11	7.7-17	11±4.0
Ca	17,146-58,412	19,669±18,887	9,806-27,938	13,687±7795
Cl	3090-11,610	6890±3485	220-400	330±74
Cr	48-230	210±81	49-67	60±7.5
Cu	95-870	260±333	31-210	42±82
F	920-1350	1170±176	1160-1640	1220±214
Fe	27,613-39,895	35,188±5059	17,353-18 633	18,416±559
Ga	14-18	15±1.5	9.6-12	10±0.8
K	31,969-48,614	43,318±6943	38,146-47,095	43,102±3661
Mg	5947-6 887	6610±395	2883-5 030	3920±877
Mn	472-488	480±6.3	248-279	263±13
Mo	1.3-2.9	2.1±0.7	2.9-11	6.9±3.3
Na	10,416-14,214	10,638±1 740	8583-16,454	10,349±3372
Ni	15-29	16±6.2	4.4-8.7	5.7±1.8
P	3561-5158	3 749±713	1554-2453	1667±400
Pb	81-310	86±107	37-79	40±19
Rb	230-350	240±54	200-250	220±21
S	2908-19,384	4870±7348	1173-1 970	1950±371
Sb	nd	nd	5.1-35	5.2±14
Si	175,454-239,759	229,176±28,153	312,012-320,823	316,480±3597
Sn	35-75	36±19	19-25	23±2.6
Sr	90-250	190±66	55-350	76±134
Ti	3717-5809	4310±880	2668-2836	2668±79
V	10-23	15±5.2	28-47	38±7.6
W	nd	nd	7.7-25	16±8.7
Zn	680-1870	1 180±488	160-510	220±153
Zr	270-550	360±117	41-74	70±15.0

min – minimum; max – maximum; med – median; SD – standard deviation; nd – not detected.

Iron, with higher concentrations in fraction F1 (max = 39,895 mg kg⁻¹), showed comparable results to those obtained for road dusts in Xi'an [34], Shanghai [35], Hong Kong [35], Beijing [35], Delhi [36] and Madrid [37], suggesting a significant geogenic contribution, which is confirmed by $EI < 3$. Elements such as Al, Fe, Ti, Zr and Na have a potential source in soil resuspended dusts and marine spray ($EI < 3$). The anthropogenic contribution may be linked

to the application of these elements in the production of metal alloys commonly used in vehicles, e.g. Fe as a major component of steel and associated rust, Al alloys associated with other elements such as Mg, Mn and Cu to reduce vehicle weight, alloys with Mn to avoid corrosion and deformation, sulphides (such as Sb_2S_3 , MoS_2 and SnS) and sulphates such as barite (BaSO_4) applied in brakes, titanium oxide (TiO_2) used as a pigment in white paints, and aluminium oxide and iron oxides also employed in brakes [33,38]. The detection of Zr may be, in part, related to vehicle exhaust emissions, since ceria/zirconia ($\text{CeO}_2/\text{ZrO}_2$) mixed oxides have become an essential component of three ways catalysts [39]. Asphalt materials are usually rich in Al, Si, K, and Ca, with smaller amounts of Fe, S, Mg, Zn, and Ti [40]. Elements such as P and K are commonly used in agriculture activities (e.g. phosphate, potassium nitrate). Higher concentrations of these elements were found in samples from the suburban location, indicating the contribution of the surrounding agricultural environment to road dust. The median concentrations of lead, chromium and copper in samples of urban streets, particularly in F1 fraction, were similar to those of other studies, e.g. Thessaloniki [41], Shiraz [42], Urumqi and Zhuzhou [43]. Lead, chromium and copper concentrations in the ranges 48–375, 2.0–498 and 47–995 mg kg^{-1} , respectively, have been reported for street dusts of different cities on various continents [44, and references therein].

The enrichment index of Zn in the finest fraction (F1) ranged from 10.6 to 43.5, with a moderate (suburban location) to very severe anthropogenic enrichment (urban streets). Zn has been reported to be present as a minor constituent of silicate minerals and linked to fly-ash particles and to traffic related materials. Tyre rubber (ZnO and Cu/Zn layers formed during vulcanisation) and break wear resuspended particles are major sources of Zn, together with Cu, in urban areas [45]. Zn is also used as engine oil additive. Sternbeck et al. [46] suggested that fuel combustion may be a significant source of Zn. Nickel is a ubiquitous natural metal, used in the production of stainless steel and other nickel alloys with high corrosion and temperature resistance. It is considered a tracer of oil combustion [47]. The high concentration of Ba is likely related to brake wear since BaSO_4 (barite) is used as filler for brake lining materials [48].

Antimony concentrations revealed a very high enrichment index ($F1 = 29.3$; $F2 = 158$) in road dust from the central avenue (S3). This is a busy street with frequent braking, especially in front of the elementary school. Since there is no dedicated parking, parents stop at the lane

to drop off or pick up their children. Antimony increases the hardness and mechanical strength of lead and is a significant metallic component in brake linings. It is also used in batteries and antifriction alloys, as additive in some types of oils, and applied in semiconductors and Sb_2O_3 in rubber vulcanisation flame retardants [40,49]. Cooper in the coarser fraction (F2) of samples from urban streets showed an *EI* of 73.6 and 18.6, while the corresponding value for the suburban location was 5.3. This element is commonly associated with traffic related activities, e.g. a component of brake pads wear. A mean Cu/Sb concentration ratio of 6.3 was obtained, in line with the 4.6 ± 2.3 diagnostic criteria proposed by Sternbeck et al. [46] for brake wear particles.

The maximum lead concentration in the coarse fraction did not exceed the minimum value recorded in the finest fraction. The highest concentration was found in the city centre (310 mg kg^{-1}), while the minimum was recorded in the suburban area with rural influence (81 mg kg^{-1}). According to Ferreira [50], the concentration of Pb in natural soils in this region is in the range $30\text{--}45 \text{ mg kg}^{-1}$. Thus, the higher values observed in the present study suggest anthropogenic sources. This element presented an *EI* of 22.1 in fraction F2 from urban locations, whilst a value of 4 was determined for the suburban area. Lead and lead compounds are used in batteries and as pigments in paints. It has been documented that lead weights, which are used to balance motor vehicle wheels, are lost and deposited in urban streets, that they accumulate along the outer curb, and that they are rapidly abraded and ground into tiny pieces by vehicle traffic [51]. Lead oxide is a component of brake friction materials [15]. Its elevated concentrations in urban dust could be a consequence of common use of PbO_4 as a gasoline additive in Portugal until the year 2000. Most of Pb is bound to stable fractions and only a negligible percentage is mobile, which contributes to its long persistence in the environment [15,45]. Tin revealed high *EI*, ranging from 11.6 in road dust samples from the suburban location to 36.3 in samples from urban streets. Tin was found to be one of the major elements in bulk brake pad samples, as well in airborne nano/micro-sized wear particles released from low-metallic automotive brakes [52]. Urban samples revealed a high *W* anthropogenic enrichment (*EI* up to 20.9). Tungsten is linked to brake pads and tyre wear [53]. The abundant use of Br as flame retardant in several types of materials may explain the high *EI* of this element (23.3 and 47 in F1 of urban samples) [54].

An arsenic concentration of 180 mg kg^{-1} ($EI = 72.7$), 6 times higher than in urban samples, was observed in fraction F1 of the suburban sample. Arsenic rich particles in this road dust sample may originate from resuspended agricultural soil. It should be borne in mind that the street where the sampling took place is flanked by a farm. In addition to the abundant natural origin, there are many agricultural sources of arsenic to the soil, from pesticide application, livestock dips, organic manure to phosphate fertilisers [55]. Elemental As is used in the manufacture of alloys, particularly with lead (e.g. in lead acid batteries) and copper. Arsenic compounds are also extensively used in the semiconductor and electronics industries, in catalysts, pyrotechnics, antifouling agents in paints, among others. Fossil fuel combustion is considered a major contributor of anthropogenic As emissions to the air (mainly As^{III}). Arsenic is present in the air of suburban and urban areas mainly in the inorganic As^{V} form. Background concentrations in soil range from 1 to 40 mg kg^{-1} , with a mean value of 5 mg kg^{-1} [56], much lower than the levels found in this study.

3.3. Mineralogical Composition

The mineralogy of the two particle size fractions of the road dust samples was compared. X-Ray Diffraction results showed that road dust samples consist primarily of mineral matter accounting for a minimum of ~60%. The most abundant mineral was quartz [SiO_2], especially in the coarse fraction. Quartz has higher structural hardness than other minerals preventing physical weathering and abrasion of road surfaces. Other minerals also present were muscovite [$\text{KAl}_3\text{Si}_3\text{O}_{10}(\text{OH})_2$], albite [$\text{NaAlSi}_3\text{O}_8$], kaolinite [$\text{Al}_2\text{Si}_2\text{O}_5(\text{OH})_4$], microcline [KAlSi_3O_8], Fe-enstatite [$(\text{Fe,Mg})_2\text{Si}_2\text{O}_6$] and graphite [C]. Minor proportions of calcite [CaCO_3] and rutile [TiO_2] were also observed, mostly in the coarse fraction of road dust collected in the suburban location. Clay forming minerals increase with the decrease of particle size. A significant proportion of amorphous content was detected in all samples, particularly in the finest fraction. This content may originate from weathered minerals, clays with low detection limit, organic matter and anthropogenic sources [57].

The bulk composition suggests that the SiO_2 content of all samples reflects the abundance of leucocratic phases (quartz and feldspar) in the coarser fractions of road dust, while Fe, Ti and Mg indicate the higher abundance of melanocratic phases (biotite, garnet and hornblende) in the finer fractions. The ternary diagram $\text{Al}_2\text{O}_3 / \text{CaO}+\text{Na}_2\text{O}+\text{K}_2\text{O} / \text{FeO}+\text{MgO}$ (Fig. 1) [58] of the studied samples defines three compositional trends, suggesting slightly

different sources for each location. The composition of road dust from the suburban street (S1) reveals a feldspars / muscovite trend, S2 (urban) plots in the feldspars / biotite, and S3 (central avenue) in the feldspars / biotite with more compositional Ca. Feldspars are the most abundant mineral in all fractions. The ternary diagram Al_2O_3 / $\text{CaO}+\text{Na}_2\text{O}$ / K_2O suggests that all samples are closer to K-feldspar composition than plagioclase, and present also high content of micas (lever rule). This graphical analysis is in line with the XRD analysis, being quartz the most abundant mineral that is not plotted in these ternary diagrams.

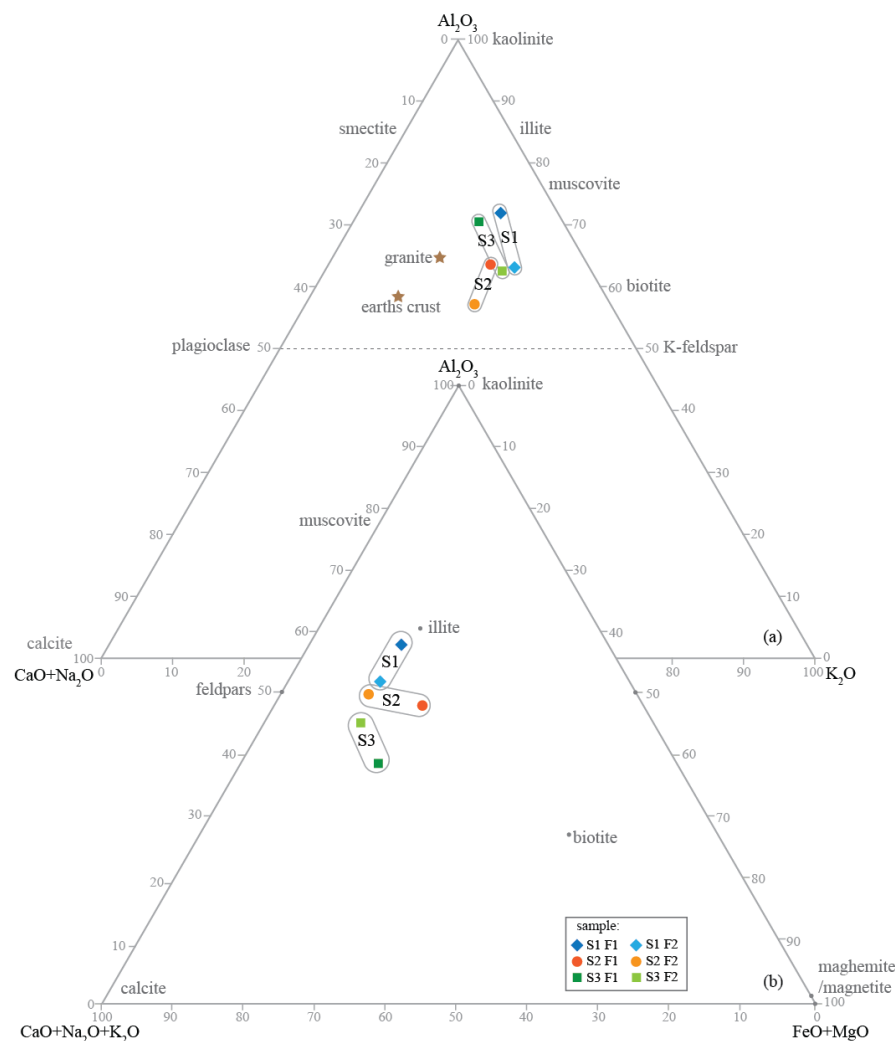


Fig. 1. Ternary diagrams (a) $\text{Al}_2\text{O}_3 - \text{CaO}+\text{Na}_2\text{O}+\text{K}_2\text{O} - \text{FeO}+\text{MgO}$, and (b) $\text{Al}_2\text{O}_3 - \text{CaO}+\text{Na}_2\text{O}+\text{K}_2\text{O} - \text{FeO}+\text{MgO}$ of the studied samples (adapted from [58]). Stars plotted indicate the average composition of earth's crust and granite [20]. S1 – suburban street, cobble pavement; S2 – urban street, asphalt pavement; S3 – central avenue, cobble pavement.

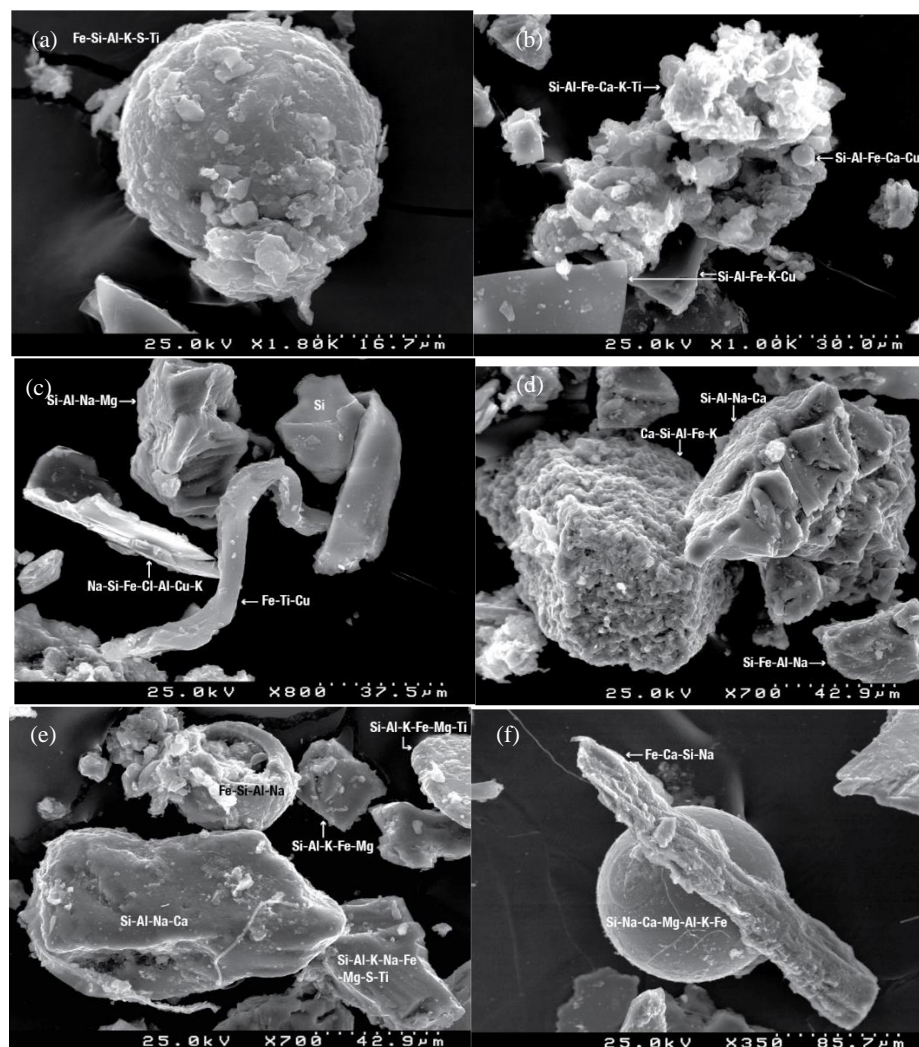
The Chemical Index of Alteration ($CIA = (Al_2O_3 / (Al_2O_3 + CaO^* + Na_2O + K_2O)) \times 100$, where CaO^* is CaO if $CaO < Na_2O$, but if $CaO > Na_2O$, $CaO = Na_2O$ [58,59] indicates: (a) low weathering if 50-60; (b) intermediate weathering if 60-80; and (c) intense weathering when > 80 [60]. The coarser fraction of road dust from urban streets (S2 and S3) reveal a low weathering, with $CIA = 57.3$ and 58.4 , respectively. The same road dust fraction of the sample collected at the suburban location (F2 of S1) indicate a low intermediate weathering with $CIA = 61.6$. The finest fractions (F1) of all samples present intermediate weathering, ranging from 61.3 to 67.6.

To assess the alumina abundance compared to other major cations, the Index of Compositional Variation ($ICV = ((Fe_2O_3 + K_2O + Na_2O + CaO + MgO + MnO + TiO_2) / Al_2O_3)$) was calculated [61,62]. Minerals such as kaolinite, illite and muscovite present $ICV < 1$, whereas minerals such as plagioclase, K-feldspar, biotite, amphiboles and pyroxenes have $ICV > 1$. The road dust sample from the suburban location influenced by agricultural activities, for both size fractions, presented an $ICV < 1$ (0.84 and 0.92), while the urban samples S2 and S3 revealed an $ICV > 1$ for both fractions (1.06 to 1.73), indicating an enrichment in rock forming minerals. The limitation of using the elemental composition to identify road dust sources should be noted, as not only the natural but also the anthropogenic contribution must be considered.

3.4. Morphology

The SEM analysis revealed the presence of well-formed minerals and irregular aggregates, with abundant silicate minerals and an un-sorted mixture of geogenic and anthropogenic particles (Fig. 2). Particles with irregular and subangular to angular shapes, with variable chemical composition that includes Fe, Cu, Zn, S, Al, Ti and Sb, suggest abrasion processes on their formation, such as tyre, break and pavement wear and vehicle corrosion interfaces. Rounded, longish and plate like particles were also found. Although some of the particles present a larger size, they are formed by several smaller particles, usually $< 10 \mu m$, which are composed of a mixture of anthropogenic and natural substances. It is known that brake abrasion generates particles containing Zn, Cu, Ti, Fe, Cu, and Pb, and other specific compounds such as sulphate silicate and barium sulphate. Particles from tyre abrasion comprise Cd, Cu, Pb, and Zn [63,64]. Silicate and Fe oxides/ hydroxides tied to Cl/S can also be associated with traffic or resuspension. Fly ashes plerospheres and cenospheres were also

found, with typical Si, Al, Fe, Ca, and Na composition. Although carbon could not be calculated due to the SEM analysis technique, its presence was confirmed by the XRD analyses. Asphalt paving, or bituminous, materials are mainly made of carbonaceous components (e.g. saturated hydrocarbons, aromatics, asphaltenes, etc.) that are mixed with mineral aggregates. In addition to metals, particles from brake-pad and brake-disc abrasion consists of carbon fibres and graphite, while particulate material from tyre wear comprises various carbonaceous constituents (organic compounds such as natural rubber copolymer, organotin compounds, and soot) [64]. Particle size indicates that road dust might be an important source of resuspended atmospheric particulate matter associated with non-exhaust emissions (e.g. brake, tyre, and road wear), as suggested in previous studies [e.g. 65]. The size of most of the non-exhaust particles is commonly much larger than that of exhaust particles, since its formation comprises processes such as corrosion, crushing and mechanical abrasion.



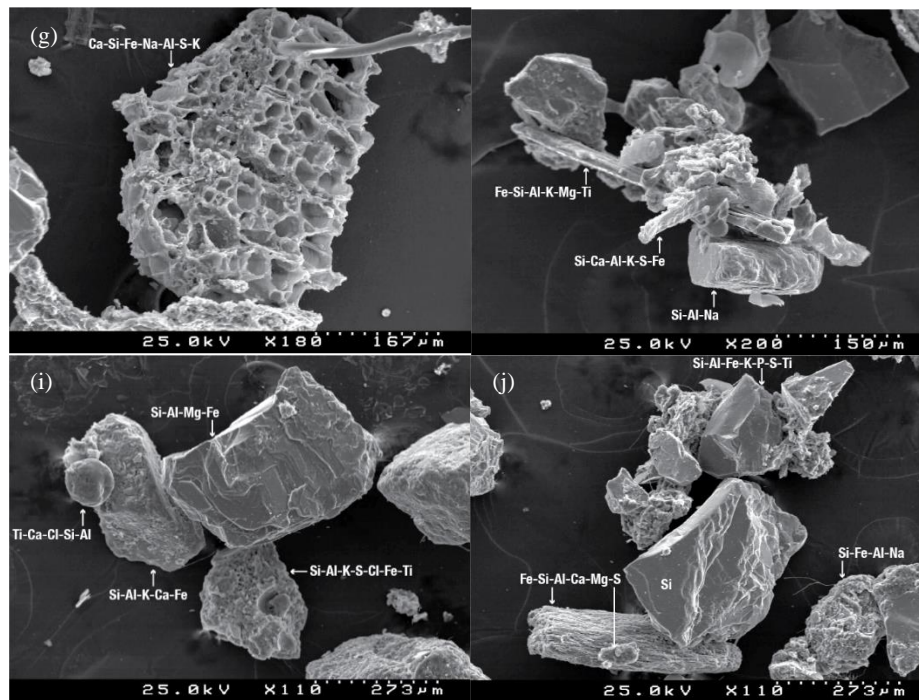


Fig. 2. Anthropogenic and geogenic road dust particles. SEM images and composition.

3.5. Grain Size Distribution

The grain size distribution of road dusts is presented in Figure 3. Results show a similar pattern for both suburban (S1) and urban areas (S2 and S3) with a marked unimodal distribution. The mass volume of particles peaked in the range from 10 to 106 μm , although small modes, barely noticeable, were observed below 5 μm . Particles < 100 μm can easily be resuspended in the wake of passing traffic or by the blowing wind and might enter the mouth and nose while breathing. Particulate matter 10 and 2.5 μm or less in diameter (PM_{10} and $\text{PM}_{2.5}$, respectively) can get deep into the lungs and some may even get into the bloodstream. Urban sample S3 presented a higher percentage of PM_{10} , with $\text{S3}_{\text{PM}_{10}}$ 37.8% > $\text{S1}_{\text{PM}_{10}}$ 27.2% > $\text{S2}_{\text{PM}_{10}}$ 25.0%, while $\text{PM}_{2.5}$ represented a smaller fraction, with 4.5% (S3) > 3.0% (S1) > 2.7% (S2) of the total mass volume. A literature review by Grigoratos and Martini [66] documented unimodal mass size distributions of brake wear PM_{10} , with a mass weighed mean diameter of 2-6 μm . On the other hand, tyre wear PM_{10} often exhibits a bimodal distribution with one peak lying within the fine particle size range and the other one within the coarse range (5-9 μm). It is estimated that almost 40-50% by mass of generated brake wear particles and 0.1-10% by mass of tyre wear particles is emitted as PM_{10} . In terms of mass, more than 85% of diesel particulate exhaust emissions are below 1 μm . Gasoline vehicles emit an even higher proportion of smaller particles than diesel vehicles [67].

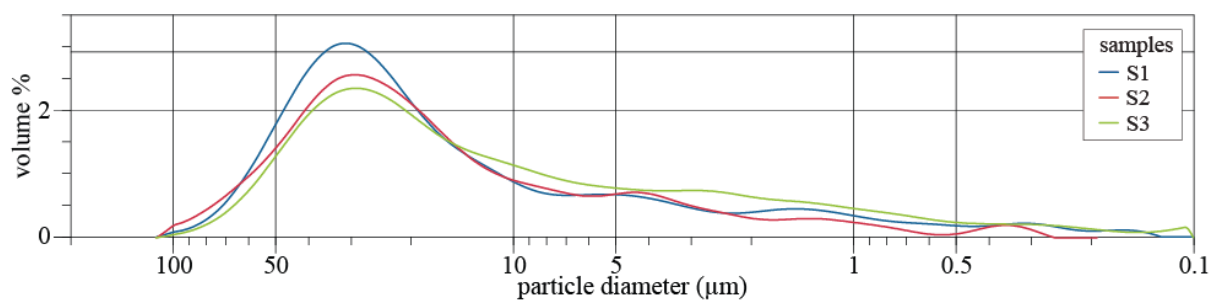


Fig. 3. Size distribution (%) of road dust particles, $\varnothing < 106 \mu\text{m}$.

3.6. Human Health Exposure Assessment

The hazard quotient (HQ), or non-carcinogenic effects, suggest that ingestion is the major route of children's exposure to road dusts (Fig. 4), both by hand-to-mouth common habits and by resuspended particles. Dermal and inhalation routes can be considered negligible (Fig. 4). Fraction F1 revealed a higher probability to induce non-carcinogenic health effects in children. For both children and adults, Zr is the element that most contributes to possible non-carcinogenic effects. Adverse health effects may occur mostly by ingestion of resuspended particles (children: F1 $HQ_{\text{ing-Zr}} \approx HI$ ranging from 27.51 to 553.10; F2 $HQ_{\text{ing-Zr}} \approx HI$ ranging from 5.66 to 8.71; adults: F1 $HQ_{\text{ing-Zr}} \approx HI$ ranging from 2.52 to 5.13; F2 $HQ_{\text{ing-Zr}} \approx HI$ ranging from 0.38 to 0.69). Studies suggest that Zr and its compounds represent a risk for pulmonary health effects (benign) potentially associated with short-term exposure [68].

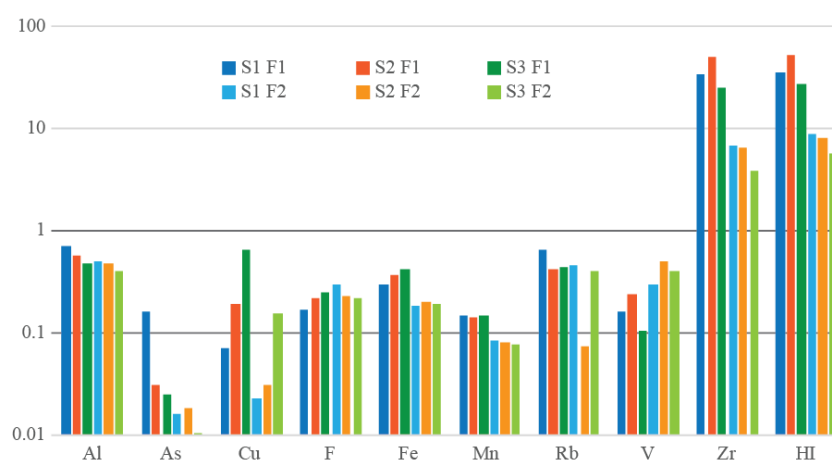


Fig. 4. Non-carcinogenic chronic hazard quotient (HQ) of Al, As, Cu, F, Fe, Mn, Rb, V and Zr by ingestion in children and cumulative non-carcinogenic hazard index (HI). Logarithmic scale.

The probability of an individual to develop any type of cancer over lifetime (Risk) by As ($Risk_{As}$) content in fraction F1 of the suburban sample is 1.58×10^{-4} (Table 2), a Risk above the acceptable target of 1×10^{-4} proposed by USEPA [24], so the adoption of local measures is suggested. Fraction F2 of the same sample showed a $Risk_{As} = 1.58 \times 10^{-5}$. $Risk_{As}$ values of 3.07×10^{-5} and 2.46×10^{-5} were obtained for fraction F1 of road dust from urban streets, while the corresponding values for fraction F2 were 1.84×10^{-5} and 1.05×10^{-5} . These cancer risks are in the range for which management measures are required. The dermal risk for As in all samples and fractions was also within this range. Arsenic and its inorganic compounds are classified as carcinogenic to humans since 2012 [69]. The Pb content in fraction F1 of sample S3 is also indicative that, by the ingestion pathway, it may pose a risk (2.24×10^{-5}) to human health.

Table 2. Human health risk for elements As and Pb.

ID		F1				F2			
		ing	inh	drm	total	ing	inh	drm	total
S1	As	1.38E-04	1.20E-07	2.02E-05	1.58E-04	1.38E-05	1.20E-08	2.02E-06	1.58E-05
	Pb	5.85E-07	1.50E-10	-	5.86E-07	2.67E-07	6.87E-11	-	2.67E-07
	total	1.38E-04	1.20E-07	2.02E-05	1.59E-04	1.40E-05	1.20E-08	2.02E-06	1.61E-05
S2	As	2.68E-05	2.33E-08	3.93E-06	3.07E-05	1.61E-05	1.40E-08	2.36E-06	1.84E-05
	Pb	6.22E-07	1.60E-10	-	6.22E-07	2.89E-07	7.43E-11	-	2.89E-07
	total	2.74E-05	2.35E-08	3.93E-06	3.14E-05	1.64E-05	1.41E-08	2.36E-06	1.87E-05
S3	As	2.14E-05	1.86E-08	3.14E-06	2.46E-05	9.18E-06	7.99E-09	1.35E-06	1.05E-05
	Pb	2.24E-05	5.76E-10	-	2.24E-05	5.71E-07	1.47E-10	-	5.71E-07
	total	2.37E-05	1.92E-08	3.14E-06	2.68E-05	9.75E-06	8.13E-09	1.35E-06	1.11E-05

ing – ingestion; inh – inhalation; drm – dermal.

4. Conclusions

Road dust resuspension is one of the major sources causing PM_{10} exceedances, with detrimental effects on climate and human health. It has been demonstrated that emission inventories must use locally determined emission factors as these vary not only with weather and road conditions, but also with vehicle fleet. This study offers the first experimental estimates for road dust emission factors in the region of Viana do Castelo. A PM_{10} emission factor of $49 \text{ mg veh}^{-1} \text{ km}^{-1}$ was derived for an asphalt paved road, which is in the range of values documented for the same type of pavement in a few other southern European cities, while much higher emissions (around $300 \text{ mg veh}^{-1} \text{ km}^{-1}$) were found for cobble stone streets.

The chemical composition and the enrichment indices suggest an anthropogenic contribution of traffic related elements, such as Br, Cl, Cr, Cu, P, Pb, S, Sn, W and Zn, especially to the finest road dust fraction (F1, <0.074 mm) from urban streets. In these locations, the fingerprint of marine spray is also identified with higher concentrations of Cl, Na and Mg. Samples from the suburban area presented an extremely severe anthropogenic enrichment in the finest fraction for the element As, possibly linked to agricultural activities and fossil fuel combustion. Quartz was mostly present in the coarser fraction, in which it was the most abundant mineral. Other minerals derived from natural sources were also observed (muscovite, albite, kaolinite, Fe-enstatite and graphite), as well as a significant amount of anthropogenic related materials (amorphous). SEM and EDS analyses indicated that the main constituents in the amorphous content originated from non-exhaust traffic sources (brake, tyre and road abrasion) and from fuel combustion.

The estimation of non-carcinogenic health risks due to exposure to heavy metals indicated that children may experience adverse effects due to ingestion of the finest size fraction of road dust. For the suburban location, the risk associated with the ingestion of this finest road dust was above the acceptable target proposed by USEPA. Other samples and size fractions presented a risk by ingestion and dermal contact within a range indicating that management measures are required.

Supplementary Materials: The following are available online at www.mdpi.com/xxx/s1, Fig. S1. Cluster analysis of the XRF results of road dust samples (S1 suburban environment influenced by agricultural activities; S2 and S3 urban streets), Fig. S2. Enrichment index for elements detected in road dust fractions (F1 – below 74 µm, F2 – between 74 µm and 1 mm). Below detection limit concentrations of Sb and W are represented in grey colour.

Funding: This work was financially supported by the project “Chemical and toxicological SOurce PROfiling of particulate matter in urban air (SOPRO)”, POCI-01-0145-FEDER-029574, funded by FEDER, through Compete2020 - Programa Operacional Competitividade e Internacionalização (POCI), and by national funds (OE), through FCT/MCTES. An acknowledgement is also given to the Portuguese Foundation of Science and Technology (FCT) and to the POHP/FSE funding programme for the fellowship SFRH/BD/117993/2016.

We are also grateful for the financial support to CESAM (UID/AMB/50017/2019), to GeoBioTec (UID/GEO/04035/2019; UIDB/04035/2020), and to FCT/MCTES through national funds, and co-funding by FEDER, within the PT2020 Partnership Agreement and Compete 2020.

Acknowledgments: Special thanks are given to the Viana do Castelo City Council, and especially to Ricardo Carvalhido, for all the logistic support.

Author Contributions: conceptualisation, C. Alves; sampling, C. Alves; E. Vicente and M. Tomé; sieving, C. Alves, C. Candeias and E. Vicente; geochemical, mineralogical and morphological characterisation, C. Candeias, P. Ávila and F. Rocha; data treatment: C. Alves and C. Candeias; writing of original draft, C. Alves and C. Candeias; review of original draft, C. Alves and C. Candeias in collaboration with all co-authors.

Conflicts of Interest: The authors declare no competing interests.

References

1. Alves, C.A.; Evtyugina, M.; Vicente, A.M.P.; Vicente, E.D.; Nunes, T. V.; Silva, P.M.A.; Duarte, M.A.C.; Pio, C.A.; Amato, F.; Querol, X. Chemical profiling of PM₁₀ from urban road dust. *Sci. Total Environ.* **2018**, *634*, 41–51.
2. Khan, R.K.; Strand, M.A. Road dust and its effect on human health: A literature review. *Epidemiol. Health* **2018**, *40*, e2018013.
3. Amato, F.; Alastuey, A.; Karanasiou, A.; Lucarelli, F.; Nava, S.; Calzolari, G.; Severi, M.; Becagli, S.; Gianelle, V.L.; Colombi, C.; et al. AIRUSE-LIFE+: A harmonized PM speciation and source apportionment in five southern European cities. *Atmos. Chem. Phys.* **2016**, *16*, 3289–3309.
4. Amato, F.; Alastuey, A.; de la Rosa, J.; Gonzalez Castanedo, Y.; Sánchez de la Campa, A.M.; Pandolfi, M.; Lozano, A.; Contreras González, J.; Querol, X. Trends of road dust emissions contributions on ambient air particulate levels at rural, urban and industrial sites in southern Spain. *Atmos. Chem. Phys.* **2014**, *14*, 3533–3544.
5. Chen, S.; Zhang, X.; Lin, J.; Huang, J.; Zhao, D.; Yuan, T.; Huang, K.; Luo, Y.; Jia, Z.; Zang, Z.; et al. Fugitive road dust PM_{2.5} emissions and their potential health impacts.

- Environ. Sci. Technol.* **2019**, *53*, 8455–8465.
6. Huang, L.; Wang, K.; Yuan, C.-S.; Wang, G. Study on the Seasonal Variation and Source apportionment of PM₁₀ in Harbin, China. *Aerosol Air Qual. Res.* **2010**, *10*, 86–93.
 7. Jalan, I.; Dholakia, H.H. *Understanding Uncertainties in Emissions Inventories. What is Polluting Delhi's Air?* Council on Energy, Environment and Water, New Delhi, 2019.
 8. Denier van der Gon, H.A.C.; Gerlofs-Nijland, M.E.; Gehrig, R.; Gustafsson, M.; Janssen, N.; Harrison, R.M.; Hulskotte, J.; Johansson, C.; Jozwicka, M.; Keuken, M.; et al. The policy relevance of wear emissions from road transport, now and in the future—An international workshop report and consensus statement. *J. Air Waste Manage. Assoc.* **2013**, *63*, 136–149.
 9. Greening, T. Quantifying the impacts of vehicle-generated dust: A comprehensive approach. The International Bank for Reconstruction and Development / The World Bank, Washington DC, USA, 2011.
 10. AIRUSE. *The efficacy of dust suppressants to control road dust re-suspension in Northern and Central Europe*. Report 14, LIFE 11/ENV/ES/584; 2016.
 11. AIRUSE. *Methods used in Barcelona to evaluate the effectiveness of CMA and MgCl₂ in reducing road dust emissions*. Action B7, LIFE11 ENV/ES/584; 2017.
 12. Gulia, S.; Goyal, P.; Goyal, S.K.; Kumar, R. Re-suspension of road dust: contribution, assessment and control through dust suppressants—A review. *Int. J. Environ. Sci. Technol.* **2019**, *16*, 1717–1728.
 13. Amato, F.; Cassee, F.R.; Denier van der Gon, H.A.C.; Gehrig, R.; Gustafsson, M.; Hafner, W.; Harrison, R.M.; Jozwicka, M.; Kelly, F.J.; Moreno, T.; et al. Urban air quality: The challenge of traffic non-exhaust emissions. *J. Hazard. Mater.* **2014**, *275*, 31–36.
 14. Amato, F.; Pandolfi, M.; Moreno, T.; Furger, M.; Pey, J.; Alastuey, A.; Bukowiecki, N.; Prevot, A.S.H.; Baltensperger, U.; Querol, X. Sources and variability of inhalable road dust particles in three European cities. *Atmos. Environ.* **2011**, *45*, 6777–6787.
 15. Adamiec, E. Chemical fractionation and mobility of traffic-related elements in road environments. *Environ. Geochem. Health* **2017**, *39*, 1457–1468.
 16. Amato, F.; Favez, O.; Pandolfi, M.; Alastuey, A.; Querol, X.; Moukhtar, S.; Bruge, B.; Verlhac, S.; Orza, J.A.G.; Bonnaire, N.; Le Priol, T.; Petit, J. F.; Sciare, J. Traffic induced particle resuspension in Paris: Emission factors and source contributions. *Atmos.*

- Environ.* **2016**, *129*, 114–124.
17. USEPA. *AP-42, Appendix C.1: Procedures For Sampling Surface/Bulk Dust Loading*; U.S. Environmental Protection Agency, Washington DC, USA, 2003.
 18. USEPA. *AP-42, Appendix C.2: Procedures For Laboratory Analysis Of Surface/Bulk Dust Loading Samples*; U.S. Environmental Protection Agency, Washington DC, USA, 2003.
 19. USEPA. *Emission Factor Documentation for AP-42, Section 13.2.1, Paved Roads - January 2011*; U.S. Environmental Protection Agency, Washington DC, USA, 2011.
 20. Reimann, C.; de Caritat, P. *Chemical Elements in the Environment*; Springer Verlag: Berlin, 1998;
 21. Chen, C.W.; Kao, C.M.; Chen, C.F.; Dong, C. Distribution and accumulation of heavy metals in the sediments of Kaohsiung Harbor, Taiwan. *Chemosphere* **2007**, *66*, 1431–1440.
 22. USEPA. *Soil Screening Guidance: Technical Background Document*; EPA 540-R-95-128; U.S. Environmental Protection Agency, Washington DC, USA, 1996.
 23. USEPA. *Screening Levels (RSL) for Chemical Contaminants at Superfund Sites. U.S.*; U.S. Environmental Protection Agency, Washington DC, USA, 2013.
 24. USEPA. The Risk Assessment Information System. Available online: <https://rais.ornl.gov/> (accessed on November 2019).
 25. INE. Portal do Instituto Nacional de Estatística—Statistics Portugal Available online: <http://www.ine.pt/> (accessed on November 2019).
 26. Berg, R. *Human Exposure to Soil Contamination: A Qualitative and Quantitative Analysis towards Proposals for Human Toxicological Intervention Values (Partly Revised Edition); Report N°. 725201011*; National Institute for Public Health and the Environment, The Netherlands, 1994.
 27. USEPA. *Risk Assessment Guidance for Superfund, Volume I: Human Health Evaluation Manual*; EPA 540-1-89-002; U.S. Environmental Protection Agency, Washington DC, USA, 1989.
 28. Amato, F.; Bedogni, M.; Padoan, E.; Querol, X.; Ealo, M.; Rivas, I. Characterization of road dust emissions in milan: Impact of vehicle fleet speed. *Aerosol Air Qual. Res.* **2017**, *17*, 2438–2449.
 29. Boulter, P.G. *A review of emission factors and models for road vehicle non-exhaust particulate matter. Project Report PPR065*; United Kingdom, 2005.

30. Li, F.; Zhang, J.; Huang, J.; Huang, D.; Yang, J.; Song, Y.; Zeng, G. Heavy metals in road dust from Xiandao District, Changsha City, China: characteristics, health risk assessment, and integrated source identification. *Environ. Sci. Pollut. Res.* **2016**, *23*, 13100–13113.
31. Pamplona, J.; Ribeiro, A. Evolução geodinâmica de Viana do Castelo (Zona Centro-Ibérica, NW de Portugal). In *Geologia de Portugal, vol I*; Dias, R., Araújo, A., Terrinha, P., Kullberg, J., Eds.; Escolar Editora: Lisboa, 2013; pp. 149–204 ISBN 978-972-592-364-1.
32. Straffelini, G.; Ciudin, R.; Ciotti, A.; Gialanella, S. Present knowledge and perspectives on the role of copper in brake materials and related environmental issues: A critical assessment. *Environ. Pollut.* **2015**, *207*, 211–219.
33. Fujiwara, F.; Rebagliati, R.J.; Dawidowski, L.; Gómez, D.; Polla, G.; Pereyra, V.; Smichowski, P. Spatial and chemical patterns of size fractionated road dust collected in a megacity. *Atmos. Environ.* **2011**, *45*, 1497–1505.
34. Li, X.; Liu, B.; Zhang, Y.; Wang, J.; Ullah, H.; Zhou, M.; Peng, L.; He, A.; Zhang, X.; Yan, X.; et al. Spatial distributions, sources, potential risks of multi-trace metal/metalloids in street dusts from barbican downtown embracing by Xi'an ancient city wall (NW, China). *Int. J. Environ. Res. Public Health* **2019**, *16*.
35. Tanner, P.A.; Ma, H.-L.; Yu, P.K.N. Fingerprinting metals in urban street dust of Beijing, Shanghai, and Hong Kong. *Environ. Sci. Technol.* **2008**, *42*, 7111–7117.
36. Rajaram, B.S.; Suryawanshi, P. V.; Bhanarkar, A.D.; Rao, C.V.C. Heavy metals contamination in road dust in Delhi city, India. *Environ. Earth Sci.* **2014**, *72*, 3929–3938.
37. De Miguel, E.; Llamas, J.F.; Chacón, E.; Berg, T.; Larssen, S.; Røyset, O.; Vadset, M. Origin and patterns of distribution of trace elements in street dust: Unleaded petrol and urban lead. *Atmos. Environ.* **1997**, *31*, 2733–2740.
38. Adachi, K.; Tainosho, Y. Characterization of heavy metal particles embedded in tire dust. *Environ. Int.* **2004**, *30*, 1009–1017.
39. Chen, H.-Y.; Chang, H.-L.R. Development of low temperature three-way catalysts for future fuel efficient vehicles. *Johnson Matthey Technol. Rev* **2015**, *59*, 64–67.
40. Gietl, J.K.; Lawrence, R.; Thorpe, A.J.; Harrison, R.M. Identification of brake wear particles and derivation of a quantitative tracer for brake dust at a major road. *Atmos. Environ.* **2010**, *44*, 141–146.

41. Bourliva, A.; Christophoridis, C.; Papadopoulou, L.; Giouri, K.; Papadopoulos, A.; Mitsika, E.; Fytianos, K. Characterization, heavy metal content and health risk assessment of urban road dusts from the historic center of the city of Thessaloniki, Greece. *Environ. Geochem. Health* **2017**, *39*, 611–634.
42. Keshavarzi, B.; Tazarvi, Z.; Rajabzadeh, M.A.; Najmeddin, A. Chemical speciation, human health risk assessment and pollution level of selected heavy metals in urban street dust of Shiraz, Iran. *Atmos. Environ.* **2015**, *119*, 1–10.
43. Zhang, C.; Yang, Y.; Li, W.; Zhang, C.; Zhang, R.; Mei, Y.; Liao, X.; Liu, Y. Spatial distribution and ecological risk assessment of trace metals in urban soils in Wuhan, central China. *Environ. Monit. Assess.* **2015**, *187*.
44. Cai, K.; Li, C. Street dust heavy metal pollution source apportionment and sustainable management in a typical city—Shijiazhuang, China. *Int. J. Environ. Res. Public Health* **2019**, *16*.
45. Valotto, G.; Rampazzo, G.; Visin, F.; Gonella, F.; Cattaruzza, E.; Glisenti, A.; Formenton, G.; Tieppo, P. Environmental and traffic-related parameters affecting road dust composition: A multi-technique approach applied to Venice area (Italy). *Atmos. Environ.* **2015**, *122*, 596–608.
46. Sternbeck, J.; Sjödin, Å.; Andréasson, K. Metal emissions from road traffic and the influence of resuspension - Results from two tunnel studies. *Atmos. Environ.* **2002**, *36*, 4735–4744.
47. USNLM. ToxNet - Toxicology Data Network. U.S. National Library of Medicine. Available online: <https://toxnet.nlm.nih.gov/>.
48. Sugözü, B.; Dağhan, B. Effect of BaSO₄ on tribological properties of brake friction materials. *Int. J. Innov. Res. Sci. Eng. Technol.* **2016**, *5*, 30–35.
49. Bi, X.; Li, Z.; Zhuang, X.; Han, Z.; Yang, W. High levels of antimony in dust from e-waste recycling in southeastern China. *Sci. Total Environ.* **2011**, *409*, 5126–5128.
50. Ferreira, I.M. Dados geoquímicos de base de solos de Portugal Continental, utilizando amostragem de baixa densidade, PhD thesis, University of Aveiro, Aveiro, 2004.
51. Root, R.A. Lead loading of urban streets by motor vehicle wheel weights. *Environ. Health Perspect.* **2000**, *108*, 937–940.
52. Kukutschová, J.; Moravec, P.; Tomášek, V.; Matějka, V.; Smolík, J.; Schwarz, J.;

- Seidlerová, J.; Šafářová, K.; Filip, P. On airborne nano/micro-sized wear particles released from low-metallic automotive brakes. *Environ. Pollut.* **2011**, *159*, 998–1006.
53. Apeagyei, E.; Bank, M.S.; Spengler, J.D. Distribution of heavy metals in road dust along an urban-rural gradient in Massachusetts. *Atmos. Environ.* **2011**, *45*, 2310–2323.
54. Abbasi, G.; Saini, A.; Goosey, E.; Diamond, M.L. Product screening for sources of halogenated flame retardants in Canadian house and office dust. *Sci. Total Environ.* **2016**, *545–546*, 299–307.
55. Punshon, T.; Jackson, B.P.; Meharg, A.A.; Warczack, T.; Scheckel, K.; Guerinot, M. Lou Understanding arsenic dynamics in agronomic systems to predict and prevent uptake by crop plants. *Sci. Total Environ.* **2017**, *581–582*, 209–220.
56. WHO. *Arsenic and Arsenic Compounds (Environmental Health Criteria 224)*; International Programme on Chemical Safety, World Health Organization, Eds.; 2nd Edition; Geneva: World Health Organization, 2001.
57. Gunawardana, C.; Goonetilleke, A.; Egodawatta, P.; Dawes, L.; Kokot, S. Source characterisation of road dust based on chemical and mineralogical composition. *Chemosphere* **2012**, *87*, 163–170.
58. Nesbitt, H.W.; Young, G.M. Petrogenesis of sediments in the absence of chemical weathering: effects of abrasion and sorting on bulk composition and mineralogy. *Sedimentology* **1996**, *43*, 341–358.
59. Nesbitt, H.W.; Young, G.M. Formation and diagenesis of weathering profiles. *J. Geol.* **1989**, *97*, 129–147.
60. Selvaraj, K.; Chen, C.T.A. Moderate chemical weathering of subtropical Taiwan: Constraints from solid-phase geochemistry of sediments and sedimentary rocks. *J. Geol.* **2006**, *114*, 101–116.
61. Cox, R.; Lowe, D.R.; Cullers, R.L. The influence of sediment recycling and basement composition on evolution of mudrock chemistry in the southwestern United States. *Geochim. Cosmochim. Acta* **1995**, *59*, 2919–2940.
62. Dehghani, S.; Moore, F.; Vasiluk, L.; Hale, B.A. The geochemical fingerprinting of geogenic particles in road deposited dust from Tehran metropolis, Iran: Implications for provenance tracking. *J. Geochemical Explor.* **2018**, *190*, 411–423.
63. Bukowiecki, N.; Lienemann, P.; Hill, M.; Furger, M.; Richard, A.; Amato, F.; Prévôt,

- A.S.H.; Baltensperger, U.; Buchmann, B.; Gehrig, R. PM₁₀ emission factors for non-exhaust particles generated by road traffic in an urban street canyon and along a freeway in Switzerland. *Atmos. Environ.* **2010**, *44*, 2330–2340.
64. Penkała, M.; Ogrodnik, P.; Rogula-Kozłowska, W. Particulate matter from the road surface abrasion as a problem of non-exhaust emission control. *Environments* **2018**, *5*, 9.
65. Weinbruch, S.; Worringer, A.; Ebert, M.; Scheuvers, D.; Kandler, K.; Pfeffer, U.; Bruckmann, P. A quantitative estimation of the exhaust, abrasion and resuspension components of particulate traffic emissions using electron microscopy. *Atmos. Environ.* **2014**, *99*, 175–182.
66. Grigoratos, T.; Martini, G. *Non-exhaust traffic related emissions. Brake and tyre wear PM*; Publications Office of the European Union, Luxembourg, 2014.
67. CONCAWE. *A study of the number, size & mass of exhaust particles emitted from European diesel and gasoline vehicles under steady-state and European driving cycle conditions. Report N° 98/51*; Brussels, 1998.
68. NIOSH. National Institute for Occupational Safety and Health. Available online: <https://www.cdc.gov/niosh> (accessed on November 2019).
69. IARC. Monographs on the identification of carcinogenic hazards to humans. International Association for Research on Cancer. Available online: <https://monographs.iarc.fr/monographs-available/>

Supplemental Materials for

Geochemical, Mineralogical and Morphological Characterisation of Road Dust and Associated Health Risks

Carla Candeias¹, Estela Vicente², Mário Tomé³, Fernando Rocha¹, Paula Ávila⁴, Célia Alves^{2*}

¹ Geobiosciences, Geotechnologies and Geoengineering Research Centre (GeoBioTec), Department of Geosciences, University of Aveiro, 3810-193 Aveiro, Portugal

² Centre for Environmental and Marine Studies (CESAM), Department of Environment, University of Aveiro, 3810-193 Aveiro, Portugal

³ School of Technology and Management (ESTG), Polytechnic Institute of Viana do Castelo, Avenida do Atlântico, nº 644, 4900-348 Viana do Castelo, Portugal

⁴ LNEG, National Laboratory of Energy and Geology, São Mamede de Infesta, Portugal

* Correspondence: celia.alves@ua.pt

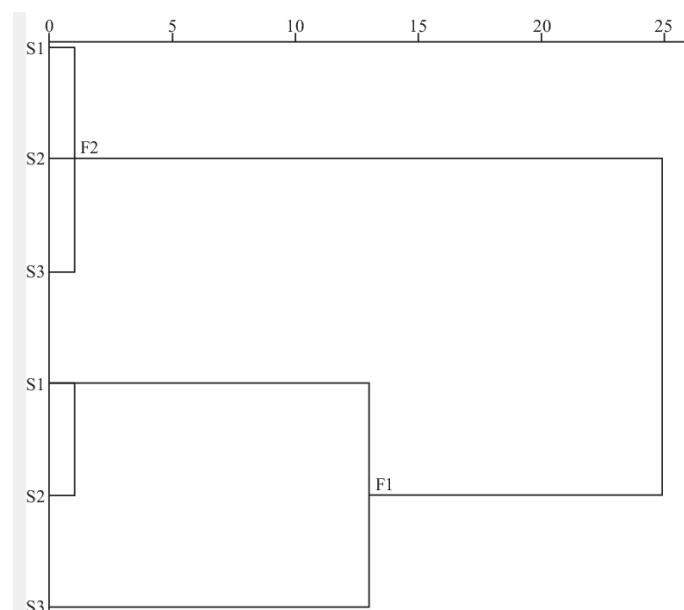


Fig. S1. Cluster analysis of the XRF results of road dust samples (S1 suburban environment influenced by agricultural activities; S2 and S3 urban streets).

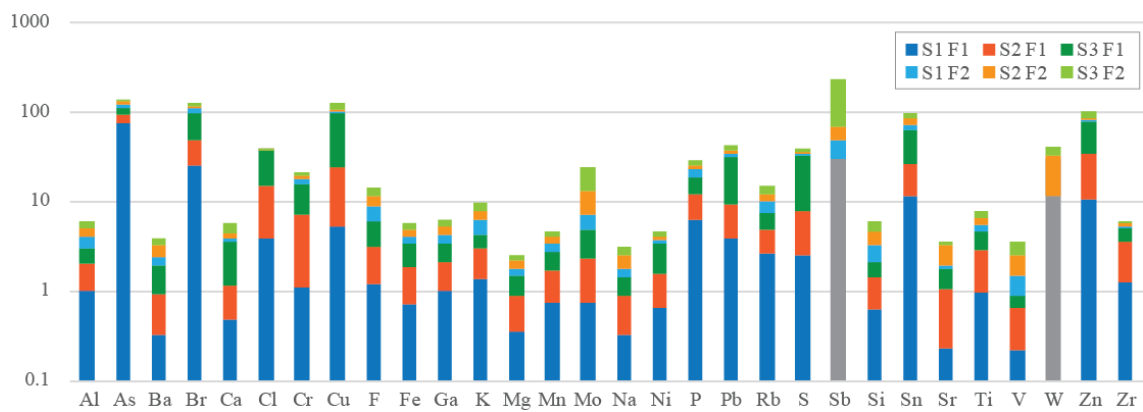


Fig. S2. Enrichment index for elements detected in road dust fractions (F1 – below 74 μm , F2 – between 74 μm and 1 mm). Below detection limit concentrations of Sb and W are represented in grey colour.