

Article

Not peer-reviewed version

HRV Alterations During Delayed-Onset Muscle Soreness Inducing Exercise – with Piezo2 Interpretation

[Gergely Langmár](#), Tekla Sümegi, Banjámin Fülöp, Lilla Pozsgai, Tamás Mocsai, [Miklós Tóth](#), Levente Racz, [Bence Kopper](#), [Andras Dér](#), András Búzás, [Balázs Sonkodi](#)*

Posted Date: 1 July 2025

doi: 10.20944/preprints202506.1739.v2

Keywords: delayed-onset muscle soreness; heart rate variability; entropy; oxidative stress; Piezo2; proton



Preprints.org is a free multidisciplinary platform providing preprint service that is dedicated to making early versions of research outputs permanently available and citable. Preprints posted at Preprints.org appear in Web of Science, Crossref, Google Scholar, Scilit, Europe PMC.

Copyright: This open access article is published under a Creative Commons CC BY 4.0 license, which permit the free download, distribution, and reuse, provided that the author and preprint are cited in any reuse.

Disclaimer/Publisher's Note: The statements, opinions, and data contained in all publications are solely those of the individual author(s) and contributor(s) and not of MDPI and/or the editor(s). MDPI and/or the editor(s) disclaim responsibility for any injury to people or property resulting from any ideas, methods, instructions, or products referred to in the content.

Article

HRV Alterations During Delayed-Onset Muscle Soreness Inducing Exercise – with Piezo2 Interpretation

Gergely Langmár ^{1,2}, Tekla Sümegi ^{1,2}, Benjámín Fülöp ², Lilla Pozsgai ³, Tamás Mocsai ², Miklós Tóth ^{4,5,6,7}, Levente Rácz ^{1,2}, Bence Kopper ¹, András Dér ⁸, András Búzás ⁸ and Balázs Sonkodi ^{4,5,6,9,*}

¹ Faculty of Kinesiology, Hungarian University of Sports Science, 1124 Budapest, Hungary

² Hungarian National Academy of Handball, 8630 Balatonboglár, Hungary

³ Department of Social Sciences, Faculty of Health Sciences, Semmelweis University, 1085 Budapest, Hungary

⁴ Department of Health Sciences and Sport Medicine, Hungarian University of Sports Science, 1123 Budapest, Hungary

⁵ Faculty of Health Sciences, Institute of Physiotherapy and Sport Science, University of Pécs, 7622 Pécs, Hungary

⁶ Szentágotthai Research Center, University of Pécs, 7622 Pécs, Hungary

⁷ Institute of Laboratory Medicine, Semmelweis University, 1085 Budapest, Hungary

⁸ Institute of Biophysics, HUN-REN Biological Research Center, 6726 Szeged, Hungary

⁹ Department of Sport Medicine, Semmelweis University, 1122 Budapest, Hungary

* Correspondence: bsonkodi@gmail.com

Abstract

Heart rate variability is often modulated by pain therefore our aim was to assess whether delayed-onset muscle soreness inducing exercise bout is affected by HRV alterations despite the evolvement of pain post exercise. We hypothesized the acquired Piezo2 channelopathy as the primary damage of DOMS according to a recent neurocentric theory. Piezo2 is indeed involved in pain mechanisms, modulates heart rate and it is the principal mechanosensory proprioceptive ion channel. Accordingly, the current study found that HR-dependence of time- and frequency-domain parameters could be described by an exponential-like function, while entropy showed a V-shaped function, with a minimum “turning point” separated by descending and ascending intervals. The DOMS protocol upshifted the time- and frequency-domain HRV parameters in the entire HR range, contrary to sample entropy values that were systematically down-shifted, indicative of an upregulated sympathetic tone. The group-averaged HR dependent sample entropy function showed a nonlinear character under exercise, with values lower for higher DOMS than for the group with lower DOMS below the turning point HR, and vice versa above it. The HR-functions of the corresponding time- and frequency-domain HRV parameters showed an opposite tendency, i.e., turning from positive to negative around the turning point HR. Oxidative stress is found to be one of the most significant influencing factors of HRV, however not by nonlinear parameters. Since oxidative stress is implicated in the neurocentric DOMS theory due to Piezo2 channelopathy therefore we are the first to report that after all nonlinear alterations may impact HRV in a HR dependent manner in DOMS.

Keywords: Delayed-onset muscle soreness; heart rate variability; entropy; oxidative stress; Piezo2; proton

1. Introduction

Delayed-onset muscle soreness (DOMS) is an enigmatic pain condition affecting basically everyone. No unequivocal mechanism theory for the cause exists for more than 125 years, when the

American Physician Theodore Hough first depicted it [1]. The most circulated theories are the lactic acid, muscle spasm, inflammation, connective tissue damage, muscle damage and enzyme efflux theories [2]. It is known that unaccustomed and/or strenuous eccentric and/or isometric contractions could induce DOMS. The following symptoms are known to be the consequence of DOMS, such as muscle stiffness, swelling, loss of force-generating capacity, reduced joint range of motion, and even more importantly delayed onset of pain sensation and impaired proprioception [3]. The transient pain sensation develops only about 8 hours, tops at about 1 or 2 days, and subsides within 7 days after the DOMS inducing exercise bout [4]. So, DOMS is clearly distinguished from pain that is experienced during or right after exercise [5]. Noteworthy that heart rate variability (HRV) is impacted by nociceptive C-fibers and pain [6], but in the case of DOMS pain is not present during the inducing exercise bout and develops only hours later [4].

HRV measures the variation in interbeat intervals from one heartbeat to the next, reflecting changes in the heart rate (HR) over time. Heart rhythm is primarily governed by the synchronized firing of pacemaker cells in the sinoatrial node (SAN) of the heart muscle, which initiates the cardiac cycle. The activity of these pacemaker cells, that generate the so-called orderly “funny” currents by primarily the HCN channels, is regulated by the autonomic nervous system (ANS). The complex actions of the underlying interdependent regulatory mechanisms give rise to the variability of the length of the cardiac cycle over different time scales, supporting the optimal performance of the heart under homeostasis. HRV measurement is one diagnostic tool to detect ANS changes and it is often used in both recreational and competitive sport activities. Moreover, this technique is proven to be effective to follow the proper course of regeneration after strenuous exercise activities. Accordingly, the return of the parasympathetic drive to pre-exercise level, and even higher magnitudes, is of interest on the path to regeneration. Anaerobic exercise delays the return of the parasympathetic tone, or autonomic control, substantially compared to aerobic exercise [7], while strenuous exercise delays this return by two days [8] which is suggested to overlap with the time window of Piezo2 channelopathy [9]. Higher HRV is often associated with better fitness and heart adaptability, while reduced HRV is commonly linked to various pathological conditions, including congestive heart failure, diabetic neuropathy, mental disorders and cancer. As it has been revealed in previous publications about the analysis of HRV data *per se*, the time- and the frequency-domain, as well as the nonlinear HRV parameters show the same phenomenon from different viewpoints, hence they are strongly interrelated, but they still carry independent information from each other [10].

The data on how the ANS exerts its modulation during exercise is accumulating. At low intensities the sympathetic loading increases, while the parasympathetic loading decreases. This parasympathetic tone declines to a point under prolonged sympathetic loading when it is almost entirely withdrawn. Thereafter the sympathetic drive sustains its increasing properties, however in decrements at higher intensities. The current authors hypothesize that a line of demarcation exists when the ANS regulation of exercise activities flips into a disordered state, or a transient point of no-return, reflecting the initiating microdamage during exercise, leading to DOMS. Important to note that the condition of DOMS is prone to higher injury risk, as the prevailing view of the scientific community [11]. Therefore, if the aforementioned transient point of no return could be detected by HRV measurements then HRV monitoring devices would gain new diagnostic relevance, serving coaches, athletes and many others.

In support, evidence is accumulating that DOMS starts off even during the inducing unaccustomed and/or strenuous exercise activity [11–14] and not 8 hours after when the pain arises. HRV alterations is thought to be modulated by nociceptive stimulation, however in DOMS the nociceptive nerve fibers reflect pain only hours after the DOMS inducing exercise [4]. Indeed, a recent pilot study showed orthostatic imbalance right after DOMS inducing exercise, detected by an orthostatic stress test that is indicative in reference to ANS dysregulation [13]. This finding not only highlighted that ANS disbalance precedes pain evolvement [13], but increased our suspicion that a transient point of no return should exist during DOMS inducing exercise activity. However, it is

important to note that to our knowledge, no such “primary damage” point has been detected by HRV monitoring device.

A new neurocentric theory of DOMS hypothesizes that DOMS is a bi-phasic, bi-compartmental non-contact injury mechanism where the primary damage occurs on Type Ia proprioceptive fiber terminals in the muscle spindle under an acute stress response (ASR) time window [15], in the form of an acquired Piezo2 channelopathy [16]. Noteworthy that the bi-phasic injury mechanism in relation to DOMS have been introduced earlier, but in extrafusal muscle territories [17,18]. However, DOMS could be induced without muscle damage and only at high exercise intensities when muscle damage may evolve [19,20]. Moreover, this DOMS theory not only incorporated the importance of the line of demarcation between good stress and bad stress reflected in remodeling and the breach of remodeling correspondingly [16], but also highlighted the role of oxidative stress in DOMS mechanism [15,21]. Furthermore, oxidative stress is shown to be one of the most significant influencing factors of HRV by its time and frequency domains, however not by nonlinear parameters [22]. Interestingly, the conditions where Piezo2 channelopathy is suspected, including DOMS, as the primary damage (the one single initiating cause of aging) are always associated with autonomic disbalance [16] and oxidative stress [23]. Accordingly, the current authors rather followed indirect neurocentric tracing by using HRV measurement tools. Moreover, this onsetting microdamaging event is proposed to be at quantum mechanical properties, initiated by proton affinity switch on Piezo2 function that impairs a novel ultrafast proton-based long-distance proprioceptive signaling in the nervous system [16,24]. Indeed, Piezo2 is the principal mechanotransducing ion channel responsible for proprioception, as was shown by the team of Nobel laureate Ardem Patapoutian [25], and in fact DOMS comes with impaired proprioception [3,12].

Low intensity exercise do not alter low frequency (LF) power of HRV, in contrast to medium to high intensity exercise that decreases LF power to close to zero value as the sympathetic load increases [26]. An earlier paper proposed that the LF power of HRV reflects the activity level of Piezo2 in the baroreceptor of the circulation and the heart [27]. Furthermore, a recent paper suggested that Piezo2 is an ultradian sensor and the only ion channel capable of initiating the theorized novel unaccounted ultrafast proton-based long-distance proprioceptive signaling in the nervous system [16], consequently it is likely manifested in the ultradian rhythm generation [28]. In support, ANS controls ultradian fluctuations through the baroreflex sensitivity and even more importantly it is HR dependent [29]. In support, conditional PIEZO2 and PIEZO1 gene knock-out mice not only endures baroreflex failure, but essentially loses blood pressure and heart rate control [30]. Correspondingly, the current authors assign Piezo2 to ultradian, while Piezo1 to diurnal control of blood pressure and HR regulation. Accordingly, Piezo1 indeed participates in the diurnal regulation of certain homeostatic processes [31]. Interesting to note that it is theorized that the ultradian clock is present at the hippocampal end of the novel unaccounted ultrafast proton-based long-distance proprioceptive signaling arised from rhythmic bacteria induced Piezo2 containing enterochromaffin cells-neural complex as the backbone of the microbiome-gut-brain axis [28]. What's more, this ultradian rhythm is likely consolidated in learning and memory through the proposed hippocampal clock in synchrony with rapid eye movement (REM) sleep [28] with the contribution of Piezo2 [23]. In favor, the association between the ultradian rhythm and REM sleep has been long observed [32] and this communication is suggested to involve the temporal pattern of the basic rest-activity-cycle (BRC) [33].

After all the goal of our study was to find alterations in HRV measurements during DOMS inducing eccentric exercise bout that would reflect upon the suspected initiating primary damage or the transient point of no return in DOMS mechanism.

2. Materials and Methods

2.1. Participants

In this study, the sample included 19 adolescence subjects. At the time of the data collection procedure every individual was the player of the Hungarian National Academy of Handball (Balatonboglar, Hungary). Basic anthropometric data of the sample: age: 15.65 ± 0.65 yrs; weight: 73.68 ± 11.14 kg; height: 183.53 ± 6.62 cm. Only those players were included in the sample who did not have lower limb pain at the time of the data collection or any kind of lower limb injury prior to the measurements. Prior to the measurements, the players were informed about the data collection protocol and the possible risks regarding the study. Due to the players young age, every individual's parent signed a written consent about the the players participation in the study according to the Declaration of Helsinki Ethical Research Principles. The study was approved by the Science Ethics Committee of the Hungarian University of Sports Science (Ethical Approval Number: TE-KEB/18/2022).

2.2. Measurement Procedure

Before and after the data collection the subjects filled out a visual analogue scale (VAS) questionnaire regarding subjective determination of pain in the lower limb. The VAS scale was evaluated as follows: 0-no pain; 1-3 mild pain; 4-6 medium pain; 7-10 severe pain.

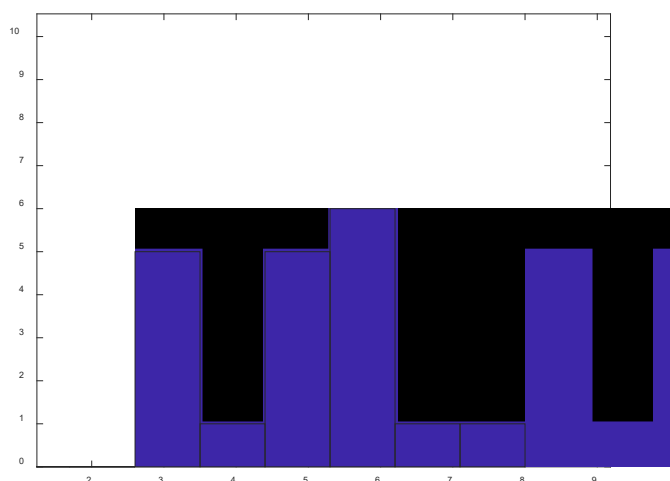


Figure 1. The distribution of the felt degree of DOMS among the athletes investigated. (The DOMS data registered for 8 and 24 hours after the training were averaged for each person.) The athletes were subsequently divided into two groups: Those of DOMS values of ≤ 5 were classified into the “Low-DOMS”, while those of ≥ 6 into the “High-DOMS” group. The data of the two groups are also analyzed separately in the paper.

Prior to the measurements, a universal warmup protocol was conducted for every participant including a 5 mins of bicycle ergometer task with minimal load and 5 mins of basic gymnastic exercises performed without any additional weight. After the warmup the measurements were executed with a Humac NORM isokinetic dynamometer (CSMi, Stoughton, MA) controlling the movement of the knee in the dominant leg of the subject. All the subjects were familiar with the Humac NORM device therefore no prior training exercise was necessary. 10 subjects executed a concentric contraction (CON) protocol and nine an eccentric (ECC). The measurement procedure in the isokinetic dynamometer was carried out as follows: 15 repetitions in 6 sets of CON or ECC while the motor moved the limb with an angular velocity of 60 deg/sec between a knee angle of 10-100 degs. Between the sets a 1min rest interval was included. The participants were instructed to generate maximal intensity of resistance while performing the ECC protocol and similarly maximum intensity of push while the CON protocol was carried out.

2.3. Data Acquisition and Preprocessing

Electrocardiographies (ECG) were recorded. The dataset included signals from ECG (sampled at subject-specific frequency, f_s), acceleration channels (X, Y, Z), activity intensity, and physical activity classification. The ECG signal was extracted and resampled to 2000 Hz using cubic spline interpolation to enhance R-peak detection accuracy.

2.4. R-Peak Detection and RR Interval Calculation

R-peaks were identified using a custom detector, from which RR intervals and heart rate (HR) time series were derived. Artifactual beats and ectopic intervals were removed through a sequential segmentation procedure combined with moving median-based outlier rejection.

2.5. Spectral and Complexity Analysis

Interpolated RR intervals, RR-differences, and HR sequences were generated at 2 Hz using linear interpolation. Time-frequency analysis was performed using short-time Fourier transform (STFT) with overlapping windows (200-sample length, 10-sample step). Total power (TP), low-frequency (LF) and high-frequency (HF) spectral components were extracted for each window (FourierRRdata). Additionally, nonlinear dynamic complexity was quantified using sample entropy (SampEn). Root mean square of successive differences (RMSSD) and standard deviation (SDNN) were also computed in each window.

3. Results

In our study, we analyzed the time-domain HRV parameters, RMSSD and SDNN, the frequency-domain parameters, LF and HF power, and the nonlinear parameter, Sample Entropy (SampEn), with special respect to the latter.

On the example of RMSSD, Figure 2 illustrates our concept of depicting the HRV parameters as a function of HR (see Figure 2b), which considerably simplifies the representation of the otherwise complex data set of HR(t) and HRV(t) functions (such as in Figure 2a), as well as the interpretation of the observed phenomena according to the ANS effects.

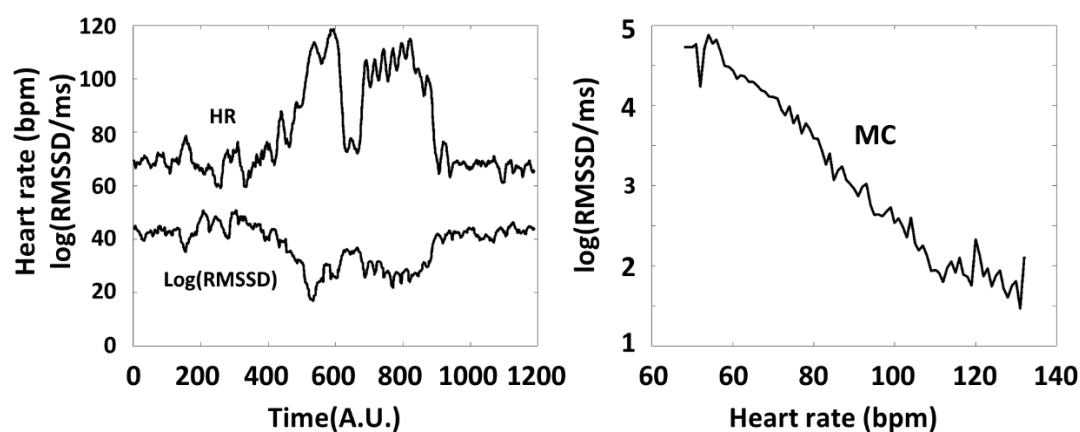


Figure 2. (a) Typical time series of the HR and a corresponding HRV-parameter (RMSSD) calculated from Holter-ECG recordings of an individual athlete during the training session (blue and red curves, respectively). The 6 consecutive series of the targeted physical exercise periods starts around 650 s, followed by a relaxation period (after ca. 900s). Data before ca. 650 s correspond to the preparation and the warm-up periods. Note the complementary course of the two curves. (b) The RMSSD(HR) Master Curve (MC) derived from the time series depicted in Figure 2a.

Figure 3. shows the collected HRV data of all the athletes, as a function of HR, distinguishing the data got from the preparation/warm-up (A), and the targeted physical exercise (B) periods (blue and red dots, respectively).

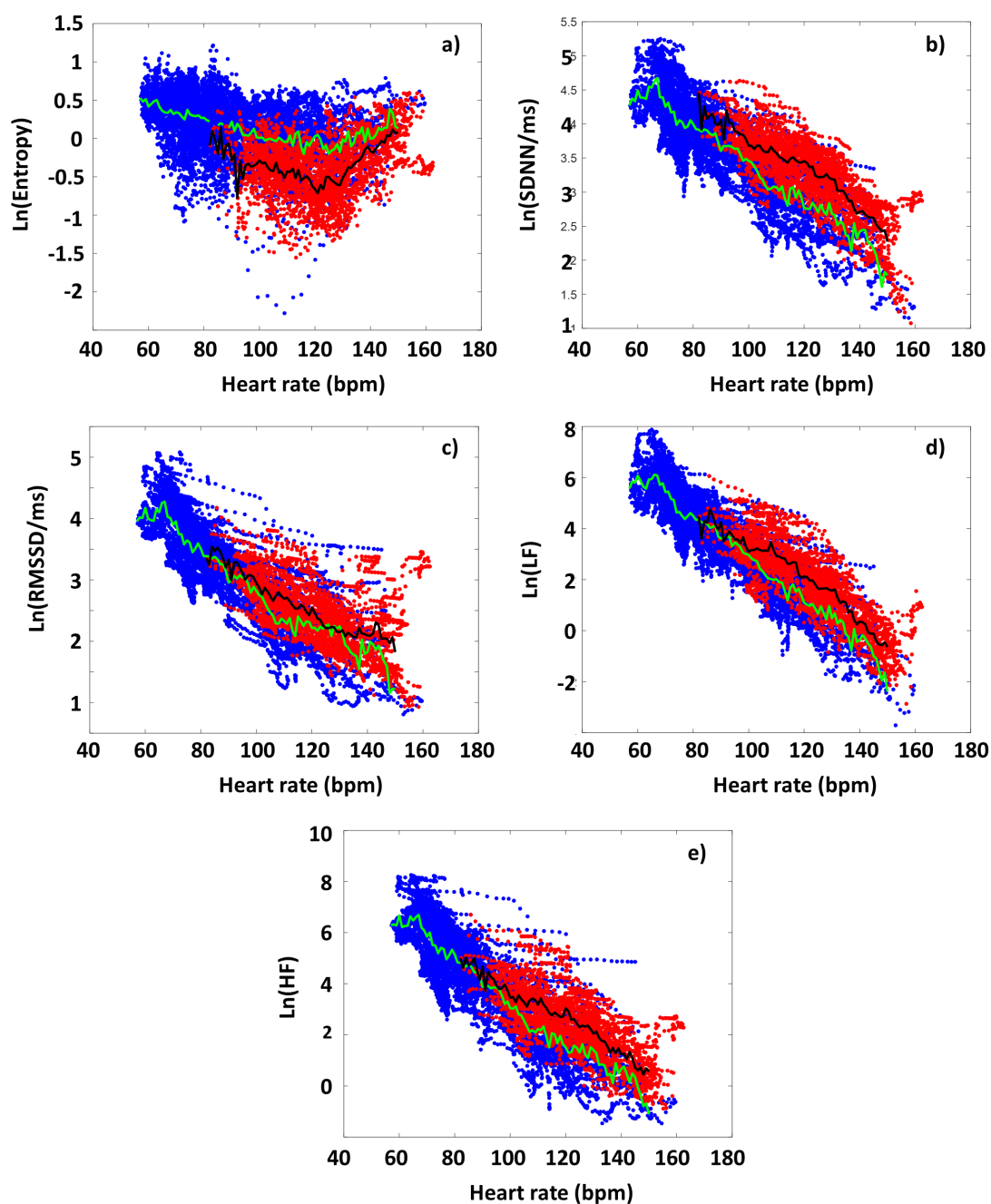


Figure 3. The HR-dependence of the collated HRV data of the athletes on a semilogarithmic scale, before and during the targeted exercise session (Periods A and B, color-coded by blue and red, respectively). a) SampEn, b) SDNN, c) RMSSD, d) LF, e) HF.

During period A, SampEn decreases gradually as a function of HR (blue dots in the figure), up to a point around 120 bpm (turning point, HR_{tp}), from where the entropy starts to increase again. This type of entropy-HR relationship can be observed for all athletes, but the HR range during warm-up is individual for each athlete, so it shows different parts of the entire curve, for each person. It can also be seen that the SampEn value covers a wide range at a given HR.

We also plotted the SampEn(HR) function during exercise (period B), where the load also includes the rest between the 6 subsequent sets. During exercise, it can be observed that the entropy tends to decrease compared to the state during period A. In other words, increased exercise loading characteristically results in lower entropy at a given HR. This is true for the entire HR-range examined, including the range below and above the turning point. Another interesting observation is that the entropy at a given HR is not only lower, but its value remains within a much narrower range than in the case of no load (period A) (Figure 3a).

The RMSSD, SDNN, LF and HF parameters show different pattern than SampEn, but very similar to each other, so we describe them together. The parameters measured during the warm-up (period A) decrease linearly in a semi-logarithmic representation as a function of HR, which confirms their exponential dependence [34]. This is also true for each athlete individually. However, under intensive exercise load (period B), the values of each of these HRV parameters increased compared to the reference set at period A.

The increase in the time- and frequency-domain parameters compared to the reference curve (period A) due to exercise (period B), however, suggests that ANS activity is increased under exercise over the entire examined HR range (the sympathetic - parasympathetic balance is upshifted compared to the normal state) [35].

As a next step, we performed an analysis to reveal whether the degree of DOMS has an interrelationship with HRV-parameters determined before or during exercise sessions. First, the HRV(HR) functions were determined for the preparation and warm-up period (period A) from the RR time series data of both the Low-DOMS and High-DOMS groups, separately, then the natural logarithms of the respective HRV(HR) curves were subtracted from each other (always the Low-DOMS from the High-DOMS), after a proper normalization to the number of individuals in the two groups (Figure S1). Although the difference curves are noisy, a clear, descending trend can be observed for all the Δ HRV parameters as a function of HR, including an apparent sign change around the turning-point HR value (HR_{tp}). The current authors propose that this descending trend reflects the oxidative stress burden of DOMS in HR dependent manner. Namely, at HR values lower than HR_{tp} , in average, there appear higher values of all HRV parameters for the High-DOMS group than for the Low-DOMS one, while above the turning point, the relation reverses. Performing the same type of evaluation for the data obtained during exercise (period B) (Figure 4), a similar picture arose for all HRV parameters but the entropy, where, interestingly, the difference curve describing the Δ SampEn(HR) function is practically mirrored to the abscissa, inasmuch as at HR values lower than HR_{tp} , the averaged entropy values during exercise are somewhat higher for the Low-DOMS group, while above HR_{tp} , the entropy values of the High-DOMS group clearly dominate, increasingly with growing pulse rate (Figure 4). The authors of this paper suggest that this increased entropy reflects increased reactive oxygen species (ROS) production and oxidative stress burden of DOMS in HR fashion, but in nonlinear territories as well.

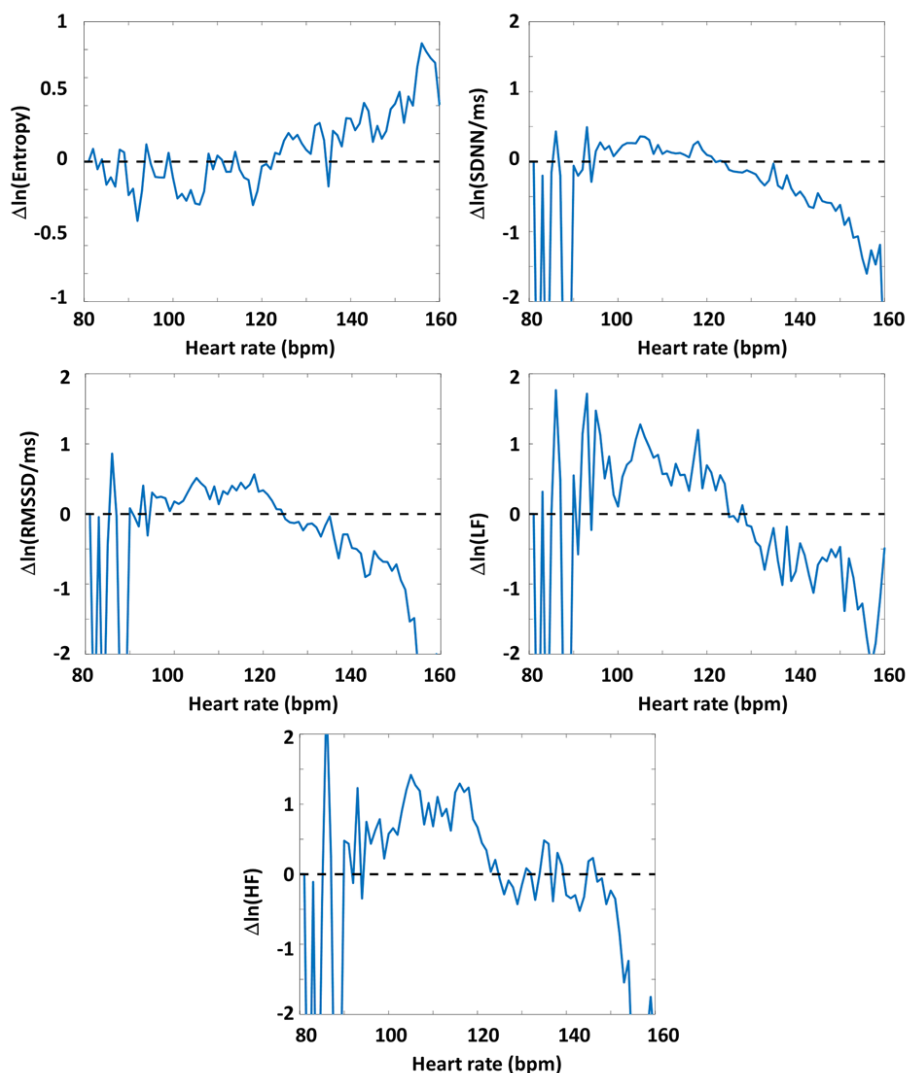


Figure 4. The effect of DOMS on various HRV parameters during the period of successive intensive exercises loading. The HRV(HR) functions were determined for period B from the RR time series data of both the Low-DOMS and High-DOMS groups, separately, then the natural logarithms of the respective HRV(HR) curves were subtracted from each other, after a proper normalization to the number of individuals in the two groups. a) SampEn, b) SDNN, c) RMSSD, d) LF power, e) HF power.

4. Discussion

In order to establish DOMS-related differences in the HRV parameters of athletes, we represented characteristic HRV-parameters as a function of HR. While the HR-dependence of time- and frequency-domain parameters could be described by an exponential-like function, entropy (SampEn) showed a V-shaped function, with a minimum (“turning point”, HR_{tp}), separating descending and ascending intervals (before and after HR_{tp} , respectively).

In this representation, it was apparent that intense exercise loading upshifted the time- and frequency-domain parameters in the entire HR range, contrary to SampEn values that were systematically down-shifted, indicative of an upregulated sympathetic tone during the applied intensive exercise protocol. The standard deviation of the distribution of the group-level SampEn values were, in turn, found to be decreased, as well.

All the HRV-parameters of the high-DOMS group showed significant group-level differences compared to those of the low-DOMS group, which, however, change sign around HR_{tp} . The averaged SampEn(HR) function showed a nonlinear character under the inducing exercise, with values lower

for the high-DOMS than for the low-DOMS group below HR_{tp} , and vice versa above it. The HR-functions of the corresponding time- and frequency-domain parameters showed an opposite tendency, i.e., turning from positive to negative around HR_{tp} . Less prominent, but still significant, differences between the high- and low-DOMS groups could also be observed during the warm-up period, as well.

Time-domain parameters, such as RMSSD and SDNN, report on the size (amplitude) of HR-fluctuations, nonlinear parameters, such as entropy or DFA-exponent, inform us about the stochastic structure of HRV. Frequency-domain parameters, such as LF and HF power, on the other hand, form a link between the other two types of representation. Whichever parameter one chooses, nevertheless, to characterize the momentary HRV, it will strongly depend on the HR value as it was demonstrated before [10,36–39]. There are plenty of publications discussing this problem, but lacking the exact mechanistic explanation that describes the relationship between HRV and HR. Moreover, there has been no practical way to define a single, “heart-rate-corrected” HRV parameter that could properly account for the HR-dependence. Moreover, HRV-entropy reflects the orderliness of the “funny” current modulation, however it is not fully understood what are the underlying physiological processes that it depends on, and its HR-dependence has not been clarified either. Factors that can influence HRV-entropy can come from the ANS function, cellular processes (e.g., mitochondrial function, etc.), or inflammatory factors during exercise, etc. As for the HR-dependence of SampEn, some people associate the value of the turning point with the intrinsic frequency [39], which is also supported by the age-dependence of the entropy, though, there is no unequivocal evidence for this [10]. A decrease in entropy at a given HR under exercise may indicate altered ANS function, and especially altered cellular processes. The current authors would like to suggest as mechanistic explanation for the above mentioned unexplained HR dependence that the ANS controls ultradian fluctuations through baroreflex sensitivity in a HR dependent manner [29] and Piezo2 (and Piezo1 as diurnal sensor) exerts fine regulation over HR [30], as likely part of ultradian encoding. Not to mention that DOMS may come with a transient proprioceptive neural switch initiated on Piezo2 as the primary damage, including alterations in neurocellular metabolic and energy generation [24].

In an earlier study signals were recorded for several-hours-long period under natural, daily-routine circumstances by a wearable ECG-device (i.e., Holter-monitoring, where otherwise no special measuring conditions are required), and data were used to derive a reference curve, called “Master Curve” (MC) [34]. The MC, with the help of nonlinear method based on modified Poincaré plots, was able to describe the HR-dependence and appeared to be rather conservative for each individual from the daily to monthly scales [34]. It was suggested in this earlier paper that the momentary deviations detectable on the minutes scale from MC, could potentially be usable as a measure of changes in the dynamics of the heart rhythm, accompanying a disbalance of the ANS. Later on, this concept was applied to reveal stress- and relaxation-related physiological changes [35]. On the other hand, long-term dependence of the MC and other HRV parameters was described and interpreted as an age-related remodeling of the cardiac system [10], in line with the acquired Piezo2 channelopathy induced quad-phasic non-contact injury model [9].

Earlier it was proposed that LF power is not a reflection of sympathetic tone, as widely viewed even today, but rather the modulation of cardiac autonomic outflows by the baroreflex [40]. Moreover, in line with this proposition it has been also suggested that LF power reflects mostly upon the excitatory activity level of Piezo2 in the baroreceptors and the heart [27]. Indeed, research is emerging to detect the role of Piezo2 in the heart as well [41,42]. Since a crosstalk is suspected between the proprioceptive system and the ANS through Piezo2 crosstalk [16,27], therefore the novel unaccounted ultrafast proton-based long-distance proprioceptive signaling in the nervous system [23] could be reflected in the cardiac autonomic outflows by the baroreflex in the form of proton release by Piezo2.

The LF power of HRV has been observed to be dampened with age as an indication of decreased ANS regulation on HR [40] and that is also in support of the aforementioned finding, leading to the age-related remodeling of the cardiac system [10]. Moreover, it is known that under medium to high

intensity exercise loading the LF power and SampEn takes an inverse course when LF power decreases almost to 0 value then SampEn is the highest. This point is suggested to be the Piezo2 inactivation moment in order to prevent pathological hyperexcitation to maintain homeostasis [43]. Interesting to note that Type Ia proprioceptive glutamatergic neurons also GABAergic [44] and GABA likely promotes this inactivation on Type Ia proprioceptors, leading to the hyperexcitation of ASIC3 containing Type II proprioceptive fibers [16]. Under physiologic conditions this increased sympathetic loading induced Piezo2 inactivation reflected in the near 0 value of LF power leads to a triggered automaticity in the SAN pacemaker cells likely regulated by Cav1.3 channels on a different pathway, and not by Piezo2 anymore [43]. Furthermore, the Piezo2 inactivation at higher sympathetic loading intensities, induced by GABAergic inhibition [44], likely reflects the desynchronization of the parasympathetic vagal and sympathetic regulation, hence the cardiac sympathetic activation is left unopposed [43]. Moreover, the gradual inactivation of Piezo2 under this proposed ASR may trade the fine motor movements for the “fight-or-flight” response [15,27]. In addition, the current authors suggest that this trade for the “fight-or-flight” response also sacrifices the fine modulation of blood pressure and HR through the baroreceptors.

In support, a recent traumatic brain injury (TBI) study revealed the essential contribution of Piezo2 in the defensive arousal response (DAR) [45]. Important to note that mild TBI is suggested to be an analogous bi-phasic non-contact injury mechanism, like DOMS is, where the primary damage likely involves an acquired proprioceptive neuron terminal Piezo2 channelopathy, too [16]. This DAR mechanism is pivotal for survival and it is instigated by perceived threat and evoked by visual and auditory cues in the presence of motor abilities [45] and could be similar to the ASR implicated in DOMS [15]. A recent unpublished paper emphasizes the ultrafast matching of the Piezo2 initiated eye-brain, auditory/vestibular-brain and proprioceptive muscle-brain axes within the hippocampal hub [12]. Not to mention the proprioceptive impairment as a result of DOMS is reflected in a tendency of mimicking a positive Romberg test [12]. Correspondingly, the aforementioned TBI study showed with genetic manipulation that reintroducing PIEZO2 promoted the reduction in escape latency and an increase in escape speed during DAR [45]. In fact, neural Piezo2 was shown to be the one activating the DAR in association with enhanced motor abilities [45]. The current authors suggest that this TBI study is in support of Piezo2's ultradian sensory and ultradian rhythm generation function, and Piezo2 channelopathy is why DOMS alters the response to postural perturbations [46] and significantly increases the medium latency response of the stretch reflex [47]. Moreover, the Piezo2 initiated heart-brain oscillatory axis has been also theorized [27,48]. The integration of the ultradian principal backbone of this oscillatory heart-brain axis into the hippocampal hub is indicative in the degenerative heart failure condition with hippocampal damage that is associated with short-term memory loss [49], reinforcing the role of hippocampus in learning and memory. Here, we should add that Piezo2-induced repeated firing, in turn, causes local membrane tension changes and cytoskeletal rearrangements (actin dynamics), not to mention the osmotic shifts and swelling/shrinking of the neuron cell body. These mechanical and structural changes are sensed again by mechanosensitive ion channels like Piezo2, in association with pressure pulse detection capability of Piezo2 [50], completing the Piezo2-mediated feedback loop. Such positive-feedback loops serve as bases of rhythm generation [51] and memory imprinting processes [52], as well.

It is worthy of considering that the aforementioned proton-release capability of Piezo2 is symmetry breaking, causing the collapse of the disordered symmetric state in order to accomplish an ordered, however not symmetric, state as acute intensive exercise loading increases. Moreover, protons could initiate the novel unaccounted ultrafast proton-based cross-frequency-coupled long-distance proprioceptive signaling in the nervous system between proprioceptive Piezo2 and hippocampal Piezo2 at a distance, constructing the backbone of the proprioceptive muscle brain axis [28]. As a distant analogy, reentrant superconductivity may arise in superconductor and ferromagnetic layers at a higher (also lower) temperature phase, leading to pairing oscillate in the space where the superconducting state presents a higher order compare to the normal state [53]. Similarly, this is why Piezo2 could be coined as a principle cross-frequency-coupler or entrainer.

However, the microdamaging event leading to acquired Piezo2 channelopathy breaks this function as the primary damage, resulting in proton reversal [16]. We suspect that this primary damage point is reflected in HRV measures because the ultradian rhythm is likely transduced to the heart by the cross-frequency coupling of the muscle-brain, heart-brain axes and the ANS through Piezo2-Piezo2 crosstalk in a HR dependent manner. Carrying on with solid-state-physics analogies, the Piezo2 on proprioceptive terminals was coined to have a low-frequency Schottky semiconductor barrier diode like function [23]. Indeed, super-Schottky diode exist within superconducting tunnel junctions, not to mention in superconductor-semiconductor junction [54]. Moreover, it is theorized that two-channel point-contact tunneling may exist in superconductors [55], giving further hints for the possible schemes of the novel unaccounted ultrafast proton-based long-distance proprioceptive signaling in the nervous system [24].

Thereupon, the question arises what SampEn denotes in reference to this long-distance proton-based signaling mechanism. SampEn is an approximation of the complexity of time-series dynamic physiological signals. The principality of Piezo2 in proprioception [25] is suggested to come from its enigmatic feature that only Piezo2 could initiate the novel unaccounted ultrafast proton-based long-distance proprioceptive signaling within the nervous system [23]. The current authors view the novel unaccounted ultrafast proton-based long-distance proprioceptive signaling in the nervous system could be reflected in the cardiac autonomic outflows by the baroreflex, or LF power, in the form of proton release by Piezo2. Hence, SampEn may represent the Piezo2 modulating capability of entropy excess, and Piezo2 channelopathy or proton reversal impairs this modulating capability. By accounting so, the current authors suggest that from low- to moderate load range, due to the increasing Piezo2 activity, the orderliness of events increases monotonically by the extent of load, implying that entropy (measured as SampEn in HRV terms), in turn, decreases up to the point where Piezo2 channels get inactivated upon the high strain of membrane due to increasing external load. From here on, the ordering action of Piezo2 channels cease when the load further increases, and entropy starts to increase again, due to other physiological side effects (e.g., local heating). We tentatively assign this turning point of the V-shaped SampEn(HR) curve to the inactivation of the Piezo2 channels. Note that below HR_{tp} , LF-power and SampEn correlate, while above it, one finds an anti-correlation (see Figures 3 and 5). Noteworthy also, that the involvement of heat shock protein 70 (Hsp70) activation through the Hsp70/TLR4/Interleukin-6/TNF- α pathway implicated in DOMS [56] and theorized on the route to Piezo2 channelopathy [14]. In addition, both the spontaneous activity dependent interactions and the potentially life-threatening activity contribution, initiated by DRA or ASR, of ultradian rhythmicity increases the temperature of brown adipose tissue by approximately 1°C [33]. Moreover, this elevation of temperature is associated with approximately 0.8°C increase of brain and 0.8°C increase of body temperature [33], explaining the “heat of battle” response during DOMS inducing exercise [15]. Accordingly, the low activity level of Piezo2, as the equivalent of high excitatory energy, keeping the SampEn low on a reverse course, reflecting a peak in entropy excess. However, under acute intensive exercise loading the high activity level of Piezo2, as the equivalent of low excitatory energy, leaves SampEn on high course, reflecting lower entropy excess.

As for the connection between HRV parameters and DOMS, the first conclusion one may deduce is that below the turning point (HR_{tp}), all the time- and frequency-domain parameters are higher for the High-DOMS group during the whole training, implying an increased ANS activity at low heart rates (Figures 3 and 4). Above HR_{tp} , however, an increasing level of autonomic attenuation develops as HR increases. This appears to correlate with the hypothesized increasing inactivation of Piezo2 above HR_{tp} . However, the entropy under intensive exercise load behaves the opposite way around: at low HR values, the SampEn values of the low-DOMS group are somewhat higher, but above HR_{tp} , the the SampEn level of the High-DOMS group start to dominate steeply, as HR rises. We suspect it to reflect an increased level of Piezo2 channelopathy among the athletes of the High-DOMS group.

The delayed onset of pain mystery and the delayed involvement of nociceptive C-fibers in DOMS is an intriguing phenomenon. Earlier it was suggested that this delayed pain sensation of DOMS and its associated movement limitation in the form of reduced joint range of motion and loss

of force-generating capacity, likely initiated by DAR/ASR, had provided 8 hours of pain-free limitless escape from danger in the wild evolutionarily [15]. The primary damage phase of the neurocentric DOMS mechanism theory may be initiated by a Piezo2 channelopathy on Type Ia proprioceptive terminals in the intrafusal space, leading to the secondary damage phase with harsher tissue damage in the extrafusal space with the involvement of the wide dynamic range (WDR) neurons on the spinal dorsal horn and other ion channels [16]. It is also important to note that acquired Piezo2 channelopathy is likely the initiating peripheral input source that drives central sensitization on spinal nociceptive neurons, even in the case of DOMS as well [16,57,58]. Thereupon, acquired Piezo2 channelopathy is proposed to be the autonomous pain generator [16]. Indeed, the evolution of pain and sensitization are lost as a consequence of loss-of-function mutations on PIEZO2 [59]. Furthermore, the aforementioned new neurocentric DOMS hypothesis heavily relied on the so called gate control theory of pain [15], conceived by Melzack and Wall [60], and the activation of the aforementioned WDR neurons on the spinal dorsal horn [16]. Moreover, a research finding showed a gate control mechanism of pain even on the dorsal root ganglion (DRG) by proprioceptive neurons [44]. Interestingly, this study also theorized the presence of quantum tunneling in reference to the presented pain gating mechanism [44]. However, the principal gate control of pain mechanism may reside further upstream on the Type Ia proprioceptive terminal in the case of DOMS where the acquired channelopathy of Piezo2 may lead to neural switch and pain evolution [9]. However, the pain evolves only as a result of the secondary damage phase of DOMS with nociceptive C-fiber contribution [16], when the aforementioned gate control mechanism of pain becomes critical downstream on the DRG, leading to WDR activation in the spinal cord [44]. This means two things in support of the bi-phasic neurocentric DOMS theory that in the presence of intact intrafusal Type Ia proprioceptive terminal open gate cannot prevail for pain evolution, hence the primary damage or Piezo2 channelopathy is a must, and extrafusal secondary damage is also essential for the activation of C-fibers in order for pain evolution in DOMS [21].

Interesting translational pilot study investigated the sympathetic regulation of the DOMS effect [61]. One of the key findings was the evolved neurogenic inflammation with the involvement of the ANS, particularly the sympathetic nervous system (SNS) [61]. Correspondingly, the more the SNS was activated, the more the pain and inflammation was augmented [61]. Even more importantly, the applied stellate ganglion block (SGB) was capable of getting in the way of full DOMS evolution [61]. The current authors translate these results, based on a recently published paper [16], that the acquired Piezo2 channelopathy on Type Ia proprioceptive terminal instigated the so-called inflammatory reflex during DOMS inducing exercise, but with the applied SGB the pathway to the secondary damage phase was interrupted, hence the so-called gateway reflex could not evolve. The data of our current research fully in support of increased SNS activity as a result of DOMS inducing exercise bout and the correlation between SNS activity and pain (Figure 4., Figure S1). We suggest that the increased SNS activity is likely driven by unopposed $Ca_v1.3$ ion channel due to the impaired Piezo2-Piezo2 crosstalk between the proprioceptive muscle-brain axis, the heart-brain axis and the ANS.

We touched upon the relevance of DAR and ASR as important underlying stress mechanisms. Essentially, personal differences of the stress response may exist, especially between trained and untrained individuals [62,63]. Since we followed a neurocentric tracing in regards to DOMS, therefore allostatic stress of neurons should be considered as well under prolonged sympathetic loading of eccentric (forced lengthening) contractions [16]. More specifically, two states of Piezo2 may prevail under allostatic stress, namely inactivated intact Piezo2 and the acquired channelopathy of Piezo2 due to the prolonged eccentric nature of DOMS inducing exercise [16]. The fundamentals of this two distinct states under allostatic stress was laid down by János (Hans) Selye by naming good stress as eustress and bad stress as distress [64]. Correspondingly, underlying Piezo2 channelopathy under allostatic stress is analogous to Selye's bad stress, or the gateway to pathophysiology, leading to impaired Piezo cross-talk and the inducement of the so-called gateway reflex [16]. On the contrary, the inactivated Piezo2 under allostatic stress is analogous to Selye's eustress that induces the so-

called inflammatory reflex and leads to remodeling and adaptation within homeostasis [16]. The adaptive mechanism is primarily served by ASIC3 ion channels when it comes to proprioception, as secondary proprioceptive ion channels [9,65]. Noteworthy, that research showed this, secondary [65], protective role of ASIC3 in DOMS [66]. If we consider Piezo2 as a principle cross-frequency-coupler [16] then good stress could be translated as frequency-coupled, or fine-tuned stress buffering (intact underlying Piezo function and crosstalk, modulation primarily taken over by secondary ASIC3), in contrast to bad stress that is decoupled or disbalanced (impaired underlying Piezo2-Piezo1 and Piezo2-Piezo2 crosstalk even when the modulation is taken over by secondary ASIC3). Since Piezo ion channels are evolutionarily conserved, therefore it is important to note that Piezo is the one buffering the mechanical stress via modulation of intracellular calcium handling in *Drosophila* heart, while the functional mutation of PIEZO fails to buffer mechanical stress, leading to pathological remodeling [67].

This demarcation line between good and bad stress is likely reflected in oxidative stress as well. Even the new neurocentric DOMS mechanism theory implicated the mitochondrial electron transport chain generated free radical production as an important underlying factor in the evolvement of the primary damage [15] that was later coined as Piezo2 channelopathy [21]. In fact, lost function of Piezo2 impairs nitric oxide synthases and instigates remodeling [68] and this is suggested to be analogous to the acquired Piezo2 channelopathy, or the primary damage, of DOMS. Another important consideration that ROS production in mitochondria could induce high-frequency oscillations [69]. Thereby this, ROS-dependent mitochondrial oscillatory signaling transduction pathway should be accounted in cardiomyocytes and myocytes under oxidative stress, like in case as a consequence of DOMS. Even more importantly the impaired low-frequency Schottky semiconductor barrier diode like function of Piezo2, as a result of Piezo2 channelopathy, may fail to modulate these ROS-dependent mitochondrial high frequency oscillations. In support it is evident that DOMS increases ROS production [70]. Moreover, the dual role of ROS in hippocampal learning and memory, more specifically in long-term potentiation or the aforementioned memory imprinting, and hippocampal neurotoxicity or even neurodegeneration has been long known as well [71,72]. Not to mention this dual role of ROS in the mitochondria of the heart is also present [73]. Noteworthy that the neurocentric DOMS theory emphasized that the primary damage could evolve at nerve terminals, like the Type Ia proprioceptive one, where the mitochondria content is high [15], leading to microscopically undetectable functional microdamage of Piezo2 [24]. Critical pathway of this hypothetical microdamage is the electron leakage serving ROS production essentially through the electron transport chain [15,23] and proton motive force [24], like in the case of the heart [73]. Since Piezo2 channelopathy is theorized to entail a proton affinity switch [24], therefore not only could explain the dual role of ROS, but the loci of Piezo2 in neuron terminals packed with mitochondria indicative of the abovementioned ultrafast axes. Acquired Piezo2 channelopathy was coined as the principal gateway to pathophysiology or the primary damage [9], as the common root cause of aging initiation [74], therefore increased ROS production may contribute to the inducement of the inflammatory reflex within homeostasis in support of remodeling, but the proton affinity switch may induce the gateway reflex as a breach of remodeling [16]. Correspondingly, Piezo2 channelopathy may not only be the result of proton affinity switch and resultant neural switch or miswiring, but may also disrupt quantum tunneling of protons and electrons from mitochondria [24], leading to increased ROS production, and resultant increased entropy and aging acceleration. This later mentioned pathophysiology is analogous to the one observed in aging of brain mitochondria [75]. In addition, proton affinity switch may be the reason why reverse electron transport may also prevail. Indeed, reverse electron transport increases mitochondrial ROS production [76].

Compelling finding shows that paired associative transcranial (TES) and peripheral electromagnetic stimulation (PES) diminish DOMS and facilitate the reinstatement of force generation [77]. In the contrary, PET alone without paired associative TES was not capable to provide any DOMS related remedy [78]. Hence, the combined TES and PES not only in support of the neurocentric DOMS theory, but also implies that the muscle-brain axis is also critical in DOMS mechanism [65]. It has

been presumed that sensing electromagnetic field induced oscillating energy is conveyed by a common receptor and in return this receptor could activate frequency dependent biological pathways with the involvement of interfacial water [79]. Piezo2 was theorized to be this common receptor and the one to initiate the ultrafast signalling in the nervous system [9]. This proton-based ultrafast signalling was also proposed to have a role in the force modulation of motoneurons [24]. Overall the paired associative TES and PES seems to reduce the secondary damage effect of DOMS, since the beneficial effect was detected in 72 hours after DOMS inducement [77], in which the impairment of the Piezo2-Piezo2 crosstalk is implicated not only along the proprioceptive terminal-hippocampal axis [23], but between the intrafusal and extrafusal compartment as well [21]. As for the concrete biophysical mechanism of this non-synaptic, bi-compartmental Piezo2 cross-communication, we suggest the rapid proton-conducting Grotthuss-mechanism to be a proper candidate [80]. It practically refers to a concerted action of a large number of quasi-simultaneous proton hopping events along a H-bonded network of water molecules. The muscle spindles, with proprioceptive terminal Piezo2 content, are enclosed with a connective tissue capsule, which contains hygroscopic glycosaminoglycan (GAG) residues attached to collagen bundles [81]. These GAG residues, such as chondroitin sulfate, heparan sulfate or hyaluronic acid side chains, are all of kosmotropic nature according to the Hofmeister-terminology [82], forming a strongly H-bonded network of water molecules, giving rise to conduction of protons released by the Piezo2 channels. On the other hand, the collagen bundles are themselves piezoelectric [83], i.e., they possess a large electric dipole moment along their axis upon external load, providing the asymmetry that will be able to define the directionality of the proton conduction. In support it is noteworthy that muscle spindles should be considered as a continuum with extrafusal space, and not as an entirely isolated structure [21]. Indeed, intrafusal muscle fibers for example reach beyond the muscle spindle capsule into extrafusal territory and tethered to the extrafusal connective tissue [84]. Since, extracellular matrix damage and impairment of the selective barrier of the muscle spindle capsule are likely part of the secondary damage phase of DOMS [16,21], therefore combined TES and PES treatment seems to reinvigorate Piezo2 from its proton reversal induced channelopathy by giving rise to proper proton conduction not only along the muscle-brain axis, but along the damaged bi-compartmental communication structures of Piezo2 ion channels. Finally, but not surprisingly, paired associative TES and PES even improves HRV parameters substantially [85], likely restituting the aforementioned Piezo2-Piezo2 crosstalk with the ANS.

Limitations

The aim of the study was to use the CON group as a control group initially. However, the 15 repetitions in 6 sets of maximum intensity CON protocol induced DOMS as well. Unfortunately, it turned out that 6 sets were too high for the CON group and the outcome is in agreement with earlier observation that at high exercise intensities there is no difference in the change in muscle soreness from pre-exercise to post-exercise intervals [86]. Since, the sample size of the ECC would have been too, low therefore the samples of the CON group was also included in the study.

Moreover, the research group must have collaborated with the coaches of athletes and their athletic program therefore some of the athletes were exposed to the study exercise protocol after days of training, while some of the athletes were exposed right after summer recess. This difference may have impacted the VAS score levels, due to repeated bout effect of DOMS with diminished symptoms [87], however it did not impact the mere fact of DOMS inducement.

Supplementary Materials: The following supporting information can be downloaded at the website of this paper posted on Preprints.org. Figure S1.

Author Contributions: Conceptualization, B.S.; methodology, L.R., B.K. and B.S.; validation, A.B. and D.A.; formal analysis, A.B.; investigation, G.L., T.S., B.F., L.P. and D.A.; resources, T.M.; data curation, A.B.; writing—original draft preparation, B.S.; writing—review and editing, L.R., A.D., A.B. and B.S.; visualization, A.B.;

supervision, M.T.; project administration, G.L.; funding acquisition, M.T. All authors have read and agreed to the published version of the manuscript.

Funding: This study was supported under the TKP2021 funding scheme by the following grants from the Ministry of Culture and Innovation of Hungary from the National Research, Development and Innovation Fund: TKP-2021-EGA-10, TKP-2021-EGA-37, and 2020-1.1.2-PIACI-KFI-2021-00245. AD's work was sponsored from the research grant NKFI-1 ADVANCED 150958.

Institutional Review Board Statement: Research was approved by the Science Committee of the Hungarian University of Sports Science (TE-KEB/18/2022).

Informed Consent Statement: Informed consent was obtained from all subjects involved in the study.

Data Availability Statement: The data presented in this study are available on request from the corresponding author.

Acknowledgments: We would like to thank the Hungarian National Academy of Handball for their involvement in this work.

Conflicts of Interest: The authors declare no conflicts of interest.

Abbreviations

The following abbreviations are used in this manuscript:

ANS	Autonomic nervous system
ASR	Acute stress response
BRC	Basic-rest-activity-cycle
CON	Concentric contraction
DAR	Defensive arousal response
DOMS	Delayed onset muscle soreness
DRG	Dorsal root ganglion
ECC	Eccentric contraction
GAG	glycosaminoglycan
HR	Heart rate
HRV	Heart rate variability
Hsp70	Heat shock protein 70
LF	Low frequency
MC	Master curve
PES	Peripheral electromagnetic stimulation
REM	Rapid eye movement
ROS	Reactive oxygen species
SampEn	Sample entropy
SAN	Sinoatrial node
SGB	Stellate ganglion block
SNS	Sympathetic nervous system
TBI	Traumatic brain injury
TES	Transcranial electromagnetic stimulation
VAS	Visual analogue scale
WDR	Wide dynamic range

References

1. Hough, T. Ergographic Studies in Muscular Fatigue and Soreness. *J Boston Soc Med Sci* **1900**, *5*, 81-92.
2. Cheung, K.; Hume, P.; Maxwell, L. Delayed onset muscle soreness : treatment strategies and performance factors. *Sports Med* **2003**, *33*, 145-164, doi:10.2165/00007256-200333020-00005.
3. Clarkson, P.M.; Nosaka, K.; Braun, B. Muscle function after exercise-induced muscle damage and rapid adaptation. *Med Sci Sports Exerc* **1992**, *24*, 512-520.

4. Mizumura, K.; Taguchi, T. Delayed onset muscle soreness: Involvement of neurotrophic factors. *J Physiol Sci* **2016**, *66*, 43-52, doi:10.1007/s12576-015-0397-0.
5. Miles, M.P.; Clarkson, P.M. Exercise-induced muscle pain, soreness, and cramps. *J Sports Med Phys Fitness* **1994**, *34*, 203-216.
6. Forstenpointner, J.; Sendel, M.; Moeller, P.; Reimer, M.; Canaan-Kuhl, S.; Gaedeke, J.; Rehm, S.; Hulleman, P.; Gierthmuhlen, J.; Baron, R. Bridging the Gap Between Vessels and Nerves in Fabry Disease. *Front Neurosci* **2020**, *14*, 448, doi:10.3389/fnins.2020.00448.
7. Buchheit, M.; Laursen, P.B.; Ahmaidi, S. Parasympathetic reactivation after repeated sprint exercise. *Am J Physiol Heart Circ Physiol* **2007**, *293*, H133-141, doi:10.1152/ajpheart.00062.2007.
8. Stanley, J.; Peake, J.M.; Buchheit, M. Cardiac parasympathetic reactivation following exercise: implications for training prescription. *Sports Med* **2013**, *43*, 1259-1277, doi:10.1007/s40279-013-0083-4.
9. Sonkodi, B. Acquired Piezo2 Channelopathy is One Principal Gateway to Pathophysiology. *Front. Biosci. (Landmark Ed)* **2025**, *30*, 33389, doi:<https://doi.org/10.31083/FBL33389>.
10. Buzás, A.; Sonkodi, B.; Dér, A. The Fundamental Connection Between Typical Time-Domain, Frequency-Domain and Nonlinear Heart-Rate-Variability Parameters as Revealed by a Comparative Analysis of Their Heart-Rate Dependence. In *Preprints*, Preprints: 2025; 10.20944/preprints202505.0641.v1.
11. Torres, R.; Vasques, J.; Duarte, J.A.; Cabri, J.M. Knee proprioception after exercise-induced muscle damage. *Int J Sports Med* **2010**, *31*, 410-415, doi:10.1055/s-0030-1248285.
12. Sümegei, T.; Langmár, G.; Fülöp, B.; Pozsgai, L.; Mocsai, T.; Tóth, M.; L., R.; B., K.; Sonkodi, B. Delayed-onset muscle soreness mimics a tendency towards a positive romberg test. *PREPRINT (Version 1) available at Research Square* **2025**, doi.org/10.21203/rs.3.rs-6667123/v1, doi:doi.org/10.21203/rs.3.rs-6667123/v1.
13. Sonkodi, B.; Radovits, T.; Csulak, E.; Kopper, B.; Sydo, N.; Merkely, B. Orthostasis Is Impaired Due to Fatiguing Intensive Acute Concentric Exercise Succeeded by Isometric Weight-Loaded Wall-Sit in Delayed-Onset Muscle Soreness: A Pilot Study. *Sports (Basel)* **2023**, *11*, doi:10.3390/sports11110209.
14. Sonkodi, B.; Pállinger, É.; Radovits, T.; Csulak, E.; Shenker-Horváth, K.; Kopper, B.; Buzás, E.I.; Sydó, N.; Merkely, B. CD3+/CD56+ NKT-like Cells Show Imbalanced Control Immediately after Exercise in Delayed-Onset Muscle Soreness. *International Journal of Molecular Sciences* **2022**, *23*, 11117.
15. Sonkodi, B.; Berkes, I.; Koltai, E. Have We Looked in the Wrong Direction for More Than 100 Years? Delayed Onset Muscle Soreness Is, in Fact, Neural Microdamage Rather Than Muscle Damage. *Antioxidants (Basel)* **2020**, *9*, doi:10.3390/antiox9030212.
16. Sonkodi, B. Acquired Piezo2 Channelopathy is One Principal Gateway to Pathophysiology. *Front Biosci (Landmark Ed)* **2025**, *30*, 33389, doi:10.31083/FBL33389.
17. Morgan, D.L.; Allen, D.G. Early events in stretch-induced muscle damage. *J Appl Physiol (1985)* **1999**, *87*, 2007-2015, doi:10.1152/jappl.1999.87.6.2007.
18. Friden, J.; Seger, J.; Sjoström, M.; Ekblom, B. Adaptive response in human skeletal muscle subjected to prolonged eccentric training. *Int J Sports Med* **1983**, *4*, 177-183, doi:10.1055/s-2008-1026031.
19. Yu, J.G.; Carlsson, L.; Thornell, L.E. Evidence for myofibril remodeling as opposed to myofibril damage in human muscles with DOMS: an ultrastructural and immunoelectron microscopic study. *Histochem Cell Biol* **2004**, *121*, 219-227, doi:10.1007/s00418-004-0625-9.
20. Mizumura, K.; Taguchi, T. Neurochemical mechanism of muscular pain: Insight from the study on delayed onset muscle soreness. *J Physiol Sci* **2024**, *74*, 4, doi:10.1186/s12576-023-00896-y.
21. Sonkodi, B. Delayed Onset Muscle Soreness and Critical Neural Microdamage-Derived Neuroinflammation. *Biomolecules* **2022**, *12*, 1207.
22. Lee, C.H.; Shin, H.W.; Shin, D.G. Impact of Oxidative Stress on Long-Term Heart Rate Variability: Linear Versus Non-Linear Heart Rate Dynamics. *Heart Lung Circ* **2020**, *29*, 1164-1173, doi:10.1016/j.hlc.2019.06.726.
23. Sonkodi, B. Does Proprioception Involve Synchronization with Theta Rhythms by a Novel Piezo2 Initiated Ultrafast VGLUT2 Signaling? *Biophysica* **2023**, *3*, 695-710.
24. Sonkodi, B. Delayed-Onset Muscle Soreness Begins with a Transient Neural Switch. *International Journal of Molecular Sciences* **2025**, *26*, 2319.

25. Woo, S.H.; Lukacs, V.; de Nooij, J.C.; Zaytseva, D.; Criddle, C.R.; Francisco, A.; Jessell, T.M.; Wilkinson, K.A.; Patapoutian, A. Piezo2 is the principal mechanotransduction channel for proprioception. *Nat Neurosci* **2015**, *18*, 1756-1762, doi:10.1038/nn.4162.
26. Perini, R.; Veicsteinas, A. Heart rate variability and autonomic activity at rest and during exercise in various physiological conditions. *Eur J Appl Physiol* **2003**, *90*, 317-325, doi:10.1007/s00421-003-0953-9.
27. Sonkodi, B. LF Power of HRV Could Be the Piezo2 Activity Level in Baroreceptors with Some Piezo1 Residual Activity Contribution. *Int J Mol Sci* **2023**, *24*, doi:10.3390/ijms24087038.
28. Sonkodi, B. Is acquired Piezo2 channelopathy the critical impairment of the brain axes and dysbiosis? **2025**, https://doi.org/10.31219/osf.io/86bca_v2, doi:https://doi.org/10.31219/osf.io/86bca_v2.
29. Oosting, J.; Struijker-Boudier, H.A.; Janssen, B.J. Autonomic control of ultradian and circadian rhythms of blood pressure, heart rate, and baroreflex sensitivity in spontaneously hypertensive rats. *J Hypertens* **1997**, *15*, 401-410, doi:10.1097/00004872-199715040-00011.
30. Zeng, W.Z.; Marshall, K.L.; Min, S.; Daou, I.; Chapleau, M.W.; Abboud, F.M.; Liberles, S.D.; Patapoutian, A. PIEZO2s mediate neuronal sensing of blood pressure and the baroreceptor reflex. *Science* **2018**, *362*, 464-467, doi:10.1126/science.aau6324.
31. Taylor, D.S.; Allotey, A.A.; Fanelli, R.E.; Satyanarayana, S.B.; Bettadapura, S.S.; Wyatt, C.R.; Landen, J.G.; Nelson, A.C.; Schmitt, E.E.; Bruns, D.R., et al. Diurnal Regulation of Urinary Behavior and Gene Expression in Aged Mice. *bioRxiv* **2025**, 10.1101/2025.03.16.642675, doi:10.1101/2025.03.16.642675.
32. Stupfel, M.; Pavely, A. Ultradian, circadian and circadian structures in endothermic vertebrates and humans. *Comp Biochem Physiol A Comp Physiol* **1990**, *96*, 1-11, doi:10.1016/0300-9629(90)90034-p.
33. Blessing, W.W. Thermoregulation and the ultradian basic rest-activity cycle. *Handb Clin Neurol* **2018**, *156*, 367-375, doi:10.1016/B978-0-444-63912-7.00022-9.
34. Buzas, A.; Horvath, T.; Der, A. A Novel Approach in Heart-Rate-Variability Analysis Based on Modified Poincaré Plots. *IEEE Access* **2022**, *10*, 36606-36615, doi:10.1109/ACCESS.2022.3162234.
35. Rudics, E.; Buzas, A.; Palfi, A.; Szabo, Z.; Nagy, A.; Hompoth, E.A.; Dombi, J.; Bilicki, V.; Szendi, I.; Der, A. Quantifying Stress and Relaxation: A New Measure of Heart Rate Variability as a Reliable Biomarker. *Biomedicines* **2025**, *13*, doi:10.3390/biomedicines13010081.
36. Monfredi, O.; Lyashkov, A.E.; Johnsen, A.B.; Inada, S.; Schneider, H.; Wang, R.; Nirmalan, M.; Wisloff, U.; Maltsev, V.A.; Lakatta, E.G., et al. Biophysical characterization of the underappreciated and important relationship between heart rate variability and heart rate. *Hypertension* **2014**, *64*, 1334-1343, doi:10.1161/HYPERTENSIONAHA.114.03782.
37. Billman, G.E. The effect of heart rate on the heart rate variability response to autonomic interventions. *Front Physiol* **2013**, *4*, 222, doi:10.3389/fphys.2013.00222.
38. Billman, G.E. The LF/HF ratio does not accurately measure cardiac sympatho-vagal balance. *Front Physiol* **2013**, *4*, 26, doi:10.3389/fphys.2013.00026.
39. Platasa, M.M.; Gal, V. Reflection of heart rate regulation on linear and nonlinear heart rate variability measures. *Physiol Meas* **2006**, *27*, 145-154, doi:10.1088/0967-3334/27/2/005.
40. Goldstein, D.S.; Benthó, O.; Park, M.Y.; Sharabi, Y. Low-frequency power of heart rate variability is not a measure of cardiac sympathetic tone but may be a measure of modulation of cardiac autonomic outflows by baroreflexes. *Exp Physiol* **2011**, *96*, 1255-1261, doi:10.1113/expphysiol.2010.056259.
41. Li, X.; Xu, T.; Wang, Y.; Hu, Z.; Duan, S.; Peng, C.; Xu, S.; Liu, C.; Li, R.; Deng, Q., et al. Piezo2 expressed in ganglionated plexi: Potential therapeutic target of atrial fibrillation. *Heart Rhythm* **2025**, 10.1016/j.hrthm.2025.03.1964, doi:10.1016/j.hrthm.2025.03.1964.
42. Kloth, B.; Mearini, G.; Weinberger, F.; Stenzig, J.; Geertz, B.; Starbatty, J.; Lindner, D.; Schumacher, U.; Reichenspurner, H.; Eschenhagen, T., et al. Piezo2 is not an indispensable mechanosensor in murine cardiomyocytes. *Sci Rep* **2022**, *12*, 8193, doi:10.1038/s41598-022-12085-9.
43. Sonkodi, B. Progressive Irreversible Proprioceptive Piezo2 Channelopathy-Induced Lost Forced Peripheral Oscillatory Synchronization to the Hippocampal Oscillator May Explain the Onset of Amyotrophic Lateral Sclerosis Pathomechanism. *Cells* **2024**, *13*, doi:10.3390/cells13060492.

44. Fuller, A.M.; Luiz, A.; Tian, N.; Arcangeletti, M.; Iseppon, F.; Sexton, J.E.; Millet, Q.; Caxaria, S.; Ketabi, N.; Celik, P., et al. Gate control of sensory neurotransmission in peripheral ganglia by proprioceptive sensory neurons. *Brain* **2023**, *146*, 4033-4039, doi:10.1093/brain/awad182.
45. Zhang, Q.; Ma, H.; Huo, L.; Wang, S.; Yang, Q.; Ye, Z.; Cao, J.; Wu, S.; Ma, C.; Shang, C. Neural mechanism of trigeminal nerve stimulation recovering defensive arousal responses in traumatic brain injury. *Theranostics* **2025**, *15*, 2315-2337, doi:10.7150/thno.106323.
46. Hedayatpour, N.; Hassanlouei, H.; Arendt-Nielsen, L.; Kersting, U.G.; Falla, D. Delayed-onset muscle soreness alters the response to postural perturbations. *Med Sci Sports Exerc* **2011**, *43*, 1010-1016, doi:10.1249/MSS.0b013e3182058628.
47. Sonkodi, B.; Hegedűs, Á.; Kopper, B.; Berkes, I. Significantly Delayed Medium-Latency Response of the Stretch Reflex in Delayed-Onset Muscle Soreness of the Quadriceps Femoris Muscles Is Indicative of Sensory Neuronal Microdamage. *Journal of Functional Morphology and Kinesiology* **2022**, *7*, 43.
48. Hamill, O.P. Arterial pulses link heart-brain oscillations. *Science* **2024**, *383*, 482-483, doi:10.1126/science.adn4942.
49. Woo, M.A.; Ogren, J.A.; Abouzeid, C.M.; Macey, P.M.; Sairafian, K.G.; Saharan, P.S.; Thompson, P.M.; Fonarow, G.C.; Hamilton, M.A.; Harper, R.M., et al. Regional hippocampal damage in heart failure. *Eur J Heart Fail* **2015**, *17*, 494-500, doi:10.1002/ejhf.241.
50. Wang, J.; Hamill, O.P. Piezo2-peripheral baroreceptor channel expressed in select neurons of the mouse brain: a putative mechanism for synchronizing neural networks by transducing intracranial pressure pulses. *J Integr Neurosci* **2021**, *20*, 825-837, doi:10.31083/j.jin2004085.
51. Buzas, A.; Makai, A.; Groma, G.I.; Dancshazy, Z.; Szendi, I.; Kish, L.B.; Santa-Maria, A.R.; Der, A. Hierarchical organization of human physical activity. *Sci Rep* **2024**, *14*, 5981, doi:10.1038/s41598-024-56185-0.
52. Whitlock, J.R.; Heynen, A.J.; Shuler, M.G.; Bear, M.F. Learning induces long-term potentiation in the hippocampus. *Science* **2006**, *313*, 1093-1097, doi:10.1126/science.1128134.
53. Wu, C.-T.; Valls, O.T.; Halterman, K. Reentrant Superconducting Phase in Conical-Ferromagnet--Superconductor Nanostructures. *Physical Review Letters* **2012**, *108*, 117005, doi:10.1103/PhysRevLett.108.117005.
54. Panna, D.; Balasubramanian, K.; Bouscher, S.; Wang, Y.; Yu, P.; Chen, X.; Hayat, A. Nanoscale High-Tc YBCO/GaN Super-Schottky Diode. *Sci Rep* **2018**, *8*, 5597, doi:10.1038/s41598-018-23882-6.
55. Fogelström, M.; Graf, M.J.; Sidorov, V.A.; Lu, X.; Bauer, E.D.; Thompson, J.D. Two-channel point-contact tunneling theory of superconductors. *Physical Review B* **2014**, *90*, 104512, doi:10.1103/PhysRevB.90.104512.
56. Dos Santos, R.S.; Veras, F.P.; Ferreira, D.W.; Sant'Anna, M.B.; Lollo, P.C.B.; Cunha, T.M.; Galdino, G. Involvement of the Hsp70/TLR4/IL-6 and TNF-alpha pathways in delayed-onset muscle soreness. *J Neurochem* **2020**, *155*, 29-44, doi:10.1111/jnc.15006.
57. Treede, R.D. Pain research in 2022: nociceptors and central sensitisation. *Lancet Neurol* **2023**, *22*, 24-25, doi:10.1016/S1474-4422(22)00485-9.
58. Brazenor, G.A.; Malham, G.M.; Teddy, P.J. Can Central Sensitization After Injury Persist as an Autonomous Pain Generator? A Comprehensive Search for Evidence. *Pain Med* **2022**, *23*, 1283-1298, doi:10.1093/pm/pnab319.
59. Szczoł, M.; Liljencrantz, J.; Ghitani, N.; Barik, A.; Lam, R.; Thompson, J.H.; Bharucha-Goebel, D.; Saade, D.; Necaise, A.; Donkervoort, S., et al. PIEZO2 mediates injury-induced tactile pain in mice and humans. *Sci Transl Med* **2018**, *10*, doi:10.1126/scitranslmed.aat9892.
60. Melzack, R.; Wall, P.D. Pain mechanisms: a new theory. *Science* **1965**, *150*, 971-979, doi:10.1126/science.150.3699.971.
61. Fleckenstein, J.; Neuberger, E.W.I.; Bormuth, P.; Comes, F.; Schneider, A.; Banzer, W.; Fischer, L.; Simon, P. Investigation of the Sympathetic Regulation in Delayed Onset Muscle Soreness: Results of an RCT. *Front Physiol* **2021**, *12*, 697335, doi:10.3389/fphys.2021.697335.
62. Calle, M.C.; Fernandez, M.L. Effects of resistance training on the inflammatory response. *Nutr Res Pract* **2010**, *4*, 259-269, doi:10.4162/nrp.2010.4.4.259.

63. Olesen, J.; Bienso, R.S.; Meinertz, S.; van Hauen, L.; Rasmussen, S.M.; Gliemann, L.; Plomgaard, P.; Pilegaard, H. Impact of training status on LPS-induced acute inflammation in humans. *J Appl Physiol (1985)* **2015**, *118*, 818-829, doi:10.1152/jappphysiol.00725.2014.
64. Selye, H. *The Physiology and Pathology of Exposure to Stress: A Treatise Based on the Concepts of the General-adaptation-syndrome and the Diseases of Adaptation.-Supplement. Annual Report on Stress; Acta:* 1951.
65. Sonkodi, B. Commentary: Effects of combined treatment with transcranial and peripheral electromagnetic stimulation on performance and pain recovery from delayed onset muscle soreness induced by eccentric exercise in young athletes. A randomized clinical trial. *Frontiers in Physiology* **2024**, *15*, doi:10.3389/fphys.2024.1380261.
66. Khataei, T.; Benson, C.J. ASIC3 plays a protective role in delayed-onset muscle soreness (DOMS) through muscle acid sensation during exercise. *Front Pain Res (Lausanne)* **2023**, *4*, 1215197, doi:10.3389/fpain.2023.1215197.
67. Zechini, L.; Camilleri-Brennan, J.; Walsh, J.; Beaven, R.; Moran, O.; Hartley, P.S.; Diaz, M.; Denholm, B. Piezo buffers mechanical stress via modulation of intracellular Ca(2+) handling in the Drosophila heart. *Front Physiol* **2022**, *13*, 1003999, doi:10.3389/fphys.2022.1003999.
68. Tian, S.; Cai, Z.; Sen, P.; van Uden, D.; van de Kamp, E.; Thuillet, R.; Tu, L.; Guignabert, C.; Boomars, K.; Van der Heiden, K., et al. Loss of lung microvascular endothelial Piezo2 expression impairs NO synthesis, induces EndMT, and is associated with pulmonary hypertension. *Am J Physiol Heart Circ Physiol* **2022**, *323*, H958-H974, doi:10.1152/ajpheart.00220.2022.
69. Aon, M.A.; Cortassa, S.; O'Rourke, B. Mitochondrial oscillations in physiology and pathophysiology. *Adv Exp Med Biol* **2008**, *641*, 98-117, doi:10.1007/978-0-387-09794-7_8.
70. Close, G.L.; Ashton, T.; Cable, T.; Doran, D.; Noyes, C.; McArdle, F.; MacLaren, D.P. Effects of dietary carbohydrate on delayed onset muscle soreness and reactive oxygen species after contraction induced muscle damage. *Br J Sports Med* **2005**, *39*, 948-953, doi:10.1136/bjism.2005.019844.
71. Knapp, L.T.; Klann, E. Role of reactive oxygen species in hippocampal long-term potentiation: contributory or inhibitory? *J Neurosci Res* **2002**, *70*, 1-7, doi:10.1002/jnr.10371.
72. Serrano, F.; Klann, E. Reactive oxygen species and synaptic plasticity in the aging hippocampus. *Ageing Res Rev* **2004**, *3*, 431-443, doi:10.1016/j.arr.2004.05.002.
73. Chen, Y.R.; Zweier, J.L. Cardiac mitochondria and reactive oxygen species generation. *Circ Res* **2014**, *114*, 524-537, doi:10.1161/CIRCRESAHA.114.300559.
74. Medvedev, Z.A. An attempt at a rational classification of theories of ageing. *Biol Rev Camb Philos Soc* **1990**, *65*, 375-398, doi:10.1111/j.1469-185x.1990.tb01428.x.
75. Bennett, J.P., Jr.; Onyango, I.G. Energy, Entropy and Quantum Tunneling of Protons and Electrons in Brain Mitochondria: Relation to Mitochondrial Impairment in Aging-Related Human Brain Diseases and Therapeutic Measures. *Biomedicines* **2021**, *9*, doi:10.3390/biomedicines9020225.
76. Chenna, S.; Koopman, W.J.H.; Prehn, J.H.M.; Connolly, N.M.C. Mechanisms and mathematical modeling of ROS production by the mitochondrial electron transport chain. *Am J Physiol Cell Physiol* **2022**, *323*, C69-C83, doi:10.1152/ajpcell.00455.2021.
77. Keriven, H.; Sanchez Sierra, A.; Gonzalez de-la-Flor, A.; Garcia-Arrabe, M.; Bravo-Aguilar, M.; de la Plaza San Frutos, M.; Garcia-Perez-de-Sevilla, G.; Tornero-Aguilera, J.F.; Clemente-Suarez, V.J.; Dominguez-Balmaseda, D. Effects of combined treatment with transcranial and peripheral electromagnetic stimulation on performance and pain recovery from delayed onset muscle soreness induced by eccentric exercise in young athletes. A randomized clinical trial. *Front Physiol* **2023**, *14*, 1267315, doi:10.3389/fphys.2023.1267315.
78. Keriven, H.; Sanchez-Sierra, A.; Minambres-Martin, D.; Gonzalez de la Flor, A.; Garcia-Perez-de-Sevilla, G.; Dominguez-Balmaseda, D. Effects of peripheral electromagnetic stimulation after an eccentric exercise-induced delayed-onset muscle soreness protocol in professional soccer players: a randomized controlled trial. *Front Physiol* **2023**, *14*, 1206293, doi:10.3389/fphys.2023.1206293.
79. Perez, F.P.; Bandeira, J.P.; Perez Chumbiauca, C.N.; Lahiri, D.K.; Morisaki, J.; Rizkalla, M. Multidimensional insights into the repeated electromagnetic field stimulation and biosystems interaction in aging and age-related diseases. *J Biomed Sci* **2022**, *29*, 39, doi:10.1186/s12929-022-00825-y.

80. Agmon, N. The Grotthuss mechanism. *Chemical Physics Letters* **1995**, *244*, 456-462, doi:[https://doi.org/10.1016/0009-2614\(95\)00905-J](https://doi.org/10.1016/0009-2614(95)00905-J).
81. Fukami, Y. Studies of capsule and capsular space of cat muscle spindles. *J Physiol* **1986**, *376*, 281-297, doi:10.1113/jphysiol.1986.sp016154.
82. Dér, A.; Kelemen, L.; Fábrián, L.; Taneva, S.G.; Fodor, E.; Páli, T.; Cupane, A.; Cacace, M.G.; Ramsden, J.J. Interfacial Water Structure Controls Protein Conformation. *The Journal of Physical Chemistry B* **2007**, *111*, 5344-5350, doi:10.1021/jp066206p.
83. Golaraei, A.; Mirsanaye, K.; Ro, Y.; Krouglov, S.; Akens, M.K.; Wilson, B.C.; Barzda, V. Collagen chirality and three-dimensional orientation studied with polarimetric second-harmonic generation microscopy. *Journal of Biophotonics* **2019**, *12*, e201800241, doi:<https://doi.org/10.1002/jbio.201800241>.
84. Banks, R.W.; Ellaway, P.H.; Prochazka, A.; Proske, U. Secondary endings of muscle spindles: Structure, reflex action, role in motor control and proprioception. *Exp Physiol* **2021**, *106*, 2339-2366, doi:10.1113/EP089826.
85. Keriven, H.; Sierra, A.S.; Gonzalez-de-la-Flor, A.; Arrabe, M.G.; de la Plaza San Frutos, M.; Maestro, A.L.; Guillermo Garcia Perez de, S.; Aguilera, J.F.T.; Suarez, V.J.C.; Balmaseda, D.D. Influence of combined transcranial and peripheral electromagnetic stimulation on the autonomous nerve system on delayed onset muscle soreness in young athletes: a randomized clinical trial. *J Transl Med* **2025**, *23*, 306, doi:10.1186/s12967-025-06238-3.
86. Fitzgerald, G.K.; Rothstein, J.M.; Mayhew, T.P.; Lamb, R.L. Exercise-induced muscle soreness after concentric and eccentric isokinetic contractions. *Phys Ther* **1991**, *71*, 505-513, doi:10.1093/ptj/71.7.505.
87. Nosaka, K.; Clarkson, P.M.; McGuiggin, M.E.; Byrne, J.M. Time course of muscle adaptation after high force eccentric exercise. *Eur J Appl Physiol Occup Physiol* **1991**, *63*, 70-76, doi:10.1007/BF00760804.

Disclaimer/Publisher's Note: The statements, opinions and data contained in all publications are solely those of the individual author(s) and contributor(s) and not of MDPI and/or the editor(s). MDPI and/or the editor(s) disclaim responsibility for any injury to people or property resulting from any ideas, methods, instructions or products referred to in the content.