

Review

Urinary titin N-fragment as a biomarker of muscle atrophy, intensive care unit-acquired weakness, and possible application for post-intensive care syndrome.

Nobuto Nakanishi ^{1,*}, Rie Tsutsumi ², Kanako Hara ², Masafumi Matsuo ³, Hiroshi Sakaue ², Jun Oto ¹

¹ Emergency and Critical Care Medicine, Tokushima University Hospital, 2-50-1 Kuramoto, Tokushima 770-8503, Japan; nobuto_nakanishi@yahoo.co.jp (N.N.); joto@tokushima-u.ac.jp (J.O.)

² Department of Nutrition and Metabolism, Tokushima University Graduate School of Biomedical Sciences, 3-18-15 Kuramoto, Tokushima 770-8503, Japan; rtsutsumi@tokushima-u.ac.jp (R.T.); c201931015@tokushima-u.ac.jp (K.H.); hsakaue@tokushima-u.ac.jp (H.S)

³ Research Center for Locomotion Biology, Kobe Gakuin University, 518 Arise, Ikawadani, Nishi, Kobe 651-2180, Japan; matsuo@kobe-u.ac.jp (M.M.)

* Correspondence: nobuto_nakanishi@yahoo.co.jp; Tel. +81-88-631-7151

Abstract: Titin is a giant protein that functions as a molecular spring in sarcomeres. Titin interplays the contraction of actin-containing thin filaments and myosin-containing thick filaments. The breakdown product of titin has been measurable in urine as urinary titin N-fragments. Urinary titin N-fragment was originally reported to be a useful biomarker in the diagnosis of muscle dystrophy. Recently, the urinary titin N-fragment has been increasingly gaining attention as a novel biomarker of muscle atrophy and intensive care unit-acquired weakness in critically ill patients, in whom titin loss is a possible pathophysiology. Furthermore, several studies reported that the urinary titin N-fragment also reflected muscle atrophy and weakness in patients with chronic illnesses. It may be used to predict the risk of post-intensive care syndrome or to monitor patients' condition after hospital discharge for better nutritional and rehabilitation management. We provide several tips on the use of this promising biomarker in post-intensive care syndrome.

Keywords: titin; muscle; diaphragm; atrophy; physical dysfunction, biomarker; urine; post-intensive care syndrome; nutrition; rehabilitation

1. Introduction

Titin, also called Connectin, is a giant sarcomere protein, which functions as a spring for muscle extension and elasticity [1]. Titin interplays the contraction of actin-containing thin filaments and myosin-containing thick filaments. Recently, the N-terminal fragment of titin, which is the breakdown product of titin, has become measurable using an enzyme-linked immunosorbent assay kit (27900 titin N-fragment Assay Kit; Immuno-Biological Laboratories, Fujioka, Japan) [2]. This kit has been used to evaluate muscle breakdown in muscle dystrophy, in which urinary titin N-fragment was increased 700-times above the normal level [3].

Muscle atrophy and weakness are common in critically ill patients [4]. Particularly, muscle weakness has been widely recognized as an intensive care unit-acquired (ICU)-acquired weakness (ICU-AW) [5]. Although the pathophysiology of ICU-AW is still unknown, Swist et al. found titin loss in the muscle biopsies of critically ill patients, and suggested that the titin loss was a cause of ICU-AW [6]. Two study groups have recently reported the utility of urinary titin N-fragment in ICU-AW. Nakanishi et al. found that the urinary titin N-fragment reflected muscle atrophy and ICU-AW in critically ill patients [7]. Moreover, the accumulated urinary titin was associated with mortality in

these patients. On the other hand, another study group, by Nakano et al., reported that urinary titin can be a possible biomarker of muscle atrophy and ICU-AW [8, 9]. The urinary titin N-fragment may become an important test in the ICU.

The ICU-AW prolongs years after the ICU discharge, which is known as the post-intensive care syndrome (PICS) [10]. PICS is a state characterized by physical dysfunctions, psychological disorders, or cognitive impairments that persist beyond ICU discharge. The state prolongs even for five years after ICU discharge [11]. One of the important measures to reduce PICS is to follow-up high-risk patients after ICU discharge. The urinary titin N-fragment can be used as a biomarker to identify patients who exhibit increased catabolism and need intervention. We suggest several tips on how to properly use the urinary titin N-fragment in PICS. In this review, we summarized the recent literatures of titin and the possible applications of the urinary titin N-fragment to PICS.

2. Titin

Titin, initially known as Connectin, was discovered in 1976 by Maruyama et al. [12]. Then, being the largest protein in the human body, it was named titin after the giant god of Titan in Greek mythology. Titin is the largest protein in humans, which has 3.0 to 3.7 MDa. This protein is located in the muscle sarcomere, and interplays the contraction of actin-containing thin filaments and myosin-containing thick filaments. Passive tension and elasticity during muscle contraction develops as a result of the titin protein by Ca^{2+} -dependent stiffening (Figure 1) [1, 13].

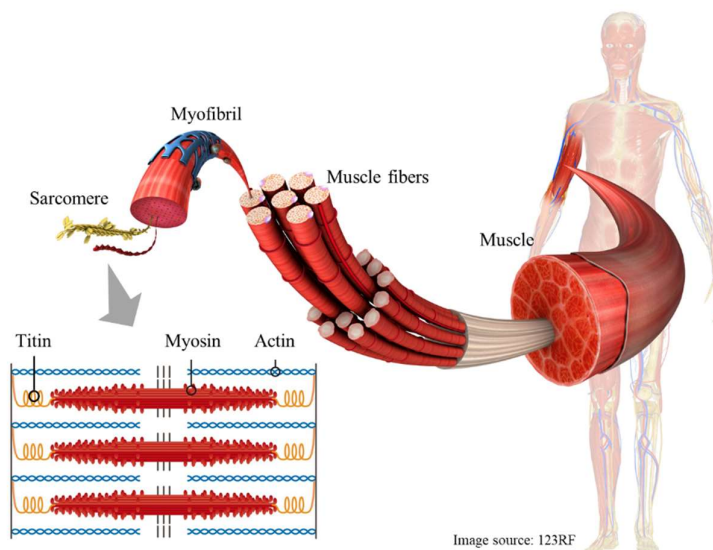


Figure 1. This is the schematic illustration of titin in the muscle. Muscle comprises of muscle fibers, myofibrils, and the smallest units known as sarcomeres. In the sarcomere, titin connects actin-containing thin filaments and myosin-containing thick filaments.

During muscle degradation, titin is broken into small fragments, and several different fragments are measurable. In serum, the metalloproteinase (MMP) 2-cleaved titin fragment and MMP 12-cleaved titin fragment are measurable. MMP 2-cleaved titin reflected muscle atrophy in a human bed rest study [14]. On the other hand, MMP 12-cleaved titin fragment can be used to assess cardiac infarction because the fragment increased after an acute myocardial infarction [15].

Recently, the N-terminal fragment of titin, known as the urinary titin N-fragment, has become measurable in urine, which has 25 kDa. Unlike serum, this urinary biomarker is noninvasive, but requires correction by urinary creatinine to adjust for the kidney function. The standard value of urinary titin N-fragment was 2.1 (1.2–2.6) pmol/mg Cr in healthy adult volunteers [2].

3. Muscle atrophy

3.1. Limb and trunk muscle atrophy

Muscle atrophy is a serious problem in critically ill patients [4]. After one week of ICU admission, critically ill patients exhibit muscle atrophy of 13.2–16.9% and 18.8–20.7% in the upper and lower limbs, respectively [16]. These muscle atrophies are associated with impaired physical function and mortality [17, 18]. Muscle atrophy is caused by numerous factors, but occurs mainly due to inflammation and immobilization. Various inflammatory cytokines are associated with muscle atrophy [19]. On the other hand, immobilization causes muscle loss by 0.33% per day even in healthy volunteers [20]. In critically ill patients, immobilization often become the cause of muscle atrophy because it is frequently observed in the ICU [21].

Muscle mass can be assessed by computed tomography, bioelectrical impedance analysis, and ultrasound [22]. Computed tomography is accurate, but exposes patients to radiation, while the bioelectrical impedance analysis is influenced by fluid changes in critically ill patients [23]. Ultrasound can be used for the bed-side monitoring of muscle atrophy, but it requires a skilled and experienced operator [24, 25]. Thus, a biomarker to assess muscle atrophy is urgently needed. In a rat study, Udaoka et al. found that six weeks of immobilization caused titin loss in the soleus muscle, which was associated with muscle dysfunction [26]. Thus, it is theoretically reasonable that urinary titin is expected to be elevated in the urine of patients who are ongoing muscle atrophy.

In muscular dystrophy, the urinary titin N-fragment reflected the disease severity. Duchenne muscular dystrophy had a higher concentration of the urinary titin N-fragment than Becker muscular dystrophy (965.8 vs 171.2 pmol/mg Cr, $p < 0.01$) [27]. This result possibly reflects the amount of muscle breakdown in these conditions. Recently, two studies have reported the usefulness of the urinary titin N-fragment in the evaluation of muscle atrophy in critically ill patients. Nakano et al. also reported that urinary titin could be used to evaluate muscle atrophy in critically ill patients [9]. In their study investigating four critically ill patients, there was a negative correlation between mean urinary titin level during the first seven days of ICU admission and femoral muscle volume measured by computed tomography ($r = -0.729$). On the other hand, Nakanishi et al. reported that in 56 non-surgical critically ill patients, the cumulative urinary titin concentration on days 3, 5, and 7 was significantly higher in the prominent muscle atrophy group ($p \leq 0.03$), suggesting that urinary titin reflects muscle atrophy in non-surgical critically ill patients [7]. However, in their study, the correlation between muscle atrophy and urinary titin was limited to $r = 0.29-0.54$ ($p \leq 0.03$), suggesting that urinary titin is affected by various physiologic conditions. Since inflammation is an important cause of muscle atrophy, the peak urinary titin N-fragment level was higher in patients with sepsis (93.0 vs 57.9 pmol/mg Cr, $p = 0.02$). Moreover, the higher urinary titin N-fragment was associated with increased mortality. Although further studies are required, some relationship exists between muscle atrophy and urinary titin N-fragment.

3.2. Diaphragm muscle atrophy

Diaphragm atrophy is a serious problem in mechanically ventilated critically ill patients, in whom 60% of patients exhibits diaphragm atrophy [28]. The atrophy is associated with prolonged mechanical ventilation and prolonged ICU stay [29]. Diaphragm atrophy is the cause of diaphragm dysfunction, which has been recognized as a Ventilator Induced Diaphragm Dysfunction (VIDD) [30].

Titin plays an important role in the diaphragm contractile force [31], and titin loss was associated with diaphragm dysfunction in rats [32, 33]. Generally, diaphragm atrophy is caused by controlled mechanical ventilation or excessive ventilatory support [34]. Hussain et al. found in the diaphragm biopsy of human subjects that prolonged controlled mechanical ventilation decreased titin, and impaired the diaphragm myofibrillar force [35]. On the other hand, Lindqvist et al. suggested that

the positive-end expiratory pressure (PEEP) during ventilation led to the breakdown of the diaphragm titin because the PEEP stretched out the sarcomere of the diaphragm muscle fibers [36].

Although titin is associated with diaphragm atrophy and dysfunction, our previous study reported that urinary titin N-fragment was not higher in the diaphragm atrophy group compared to the unchanged group (147.9 vs. 192.4 pmol/mg in the unchanged vs. atrophy group, $p = 0.33$) [7]. The urinary titin N-fragment can measure the titin breakdown product in all muscles, and is not specific to the diaphragm. To quantify the diaphragm atrophy, a diaphragm-specific titin kit is necessary. It may be theoretically possible because a cardiac-specific titin kit was developed in another study [37].

Interestingly, several studies reported that increased diaphragm thickness has worse clinical outcomes as well as diaphragm atrophy [28, 29]. Insufficient ventilatory support leads to excessive respiratory effort in mechanically ventilated patients. This condition increases the diaphragm thickness. Since the increased muscle thickness has worse outcomes, the hypertrophied diaphragm may not have functional titin to properly work. In a previous study about urinary titin N-fragment, there was no significant difference in the cumulative urinary titin N-fragment between the unchanged diaphragm thickness and increased diaphragm thickness groups (147.9 [79.0–257.8] vs. 426.1 [140.8–578.2] pmol/mg Cr in unchanged vs. increased, $p = 0.45$) [7]. The combination of increased diaphragm thickness and atrophy also did not have a significant difference in terms of the cumulative urinary titin N-fragment (147.9 [79.0–257.8] vs. 206.5 [99.3–440.8] pmol/mg Cr in unchanged vs. combination, $p = 0.31$). The mechanism of increased diaphragm thickness remains to be elucidated.

Diaphragm dysfunction is preventable and reversible. It is therefore important to maintain spontaneous breathing and avoid excessive ventilatory support during mechanical ventilation, which is called diaphragm protective ventilation [29]. Diaphragm protective ventilation can prevent diaphragm atrophy, compared with lung protective ventilation [38]. On the other hand, O' Rourke et al. reported that percutaneous electrical phrenic nerve stimulation increased diaphragm thickness by 15.1% within 48 hours [39]. Extracorporeal support is also considered to prevent diaphragm injury [40], and in a case report, the early initiation of extracorporeal support prevented diaphragm atrophy, with a relatively suppressed urinary titin N-fragment of 24.1–38.4 pmol/mg Cr [41].

3.3. Other respiratory muscle atrophy

In addition to the diaphragm muscle, intercostal muscle atrophy is also observed in mechanically ventilated patients [42], and is associated with prolonged mechanical ventilation and prolonged ICU stay [28]. Moreover, muscle atrophy occurs in other expiratory muscles including the obliquus interna, obliquus externa, transversus abdominis, and rectus abdominis muscles [43]. In a case report of a mechanically ventilated patient, intercostal muscle biopsy showed the loss of myosin-containing thick filaments with the possible detachment of titin [44]. Titin loss may be an important cause of other respiratory muscle dysfunctions as well as that of the diaphragm. Jonkman et al. reported that breath-synchronized electrical stimulation increased the thickness of abdominal expiratory muscles (1.76 mm vs. -0.50 mm in intervention vs. control, $p = 0.02$) [45]. Thus, titin loss may be reversible by active rehabilitation.

4. ICU-acquired weakness

In the ICU, newly acquired muscle weakness is called ICU-acquired weakness (ICU-AW), which is found in 40–50% of all critically ill patients [4]. In a previous study, ICU-AW was independently associated with physical dysfunction at six months after ICU discharge [46]. The diagnosis of ICU-AW requires muscle strength assessment, basically by using a medical research council score < 48 [47], and the low medical research council score was associated with impaired physical functions including handgrip strength, 6-minute walking distance, and physical functioning of SF-36 even five years after ICU discharge [48]. Also, because the diagnosis of ICU-AW requires active cooperation of patients, the assessment is not feasible in about half of critically ill patients [4]. Thus, the development

of a biomarker is important to diagnose ICU-AW. However, there has been no established available biomarker to diagnose ICU-AW [49].

ICU-AW is classified into critical illness myopathy or neuropathy [5]. Although the mechanism is still unknown, the damage to myosin-containing thick filaments has been proposed to be a contributing factor of the critical illness myopathy [50, 51]. Recently, Swist et al. collected biopsies of the tibialis anterior muscles in nine mechanically ventilated ICU patients diagnosed with critical illness myopathy, and found that not only myosin-containing thick filaments, but also titin was lost in the muscle, whereas actin-containing thin filaments were unchanged [6]. In their other study, a titin-inactivated mouse had sarcomere disintegration, myocyte de-stiffening, and force impairment, which were consistent with the muscle damage of critical illness myopathy. Thus, they suggested that titin loss is a contributing factor of critical illness myopathy. On the other hand, Chen et al. investigated the role of titin in neuropathy [52]. They denervated the tibialis anterior muscles of rats, and measured the amount of titin in the muscle. In the denervated muscle, titin loss was observed, and the loss was dependent on the denervation time. They found that titin was translocated possibly cleaved from the sarcomere, and concluded that titin was sensitive to degradation after denervation.

Urinary titin N-fragment is useful to assess functional impairments. Ishihara et al. reported that urinary titin N-fragment correlated with functional impairments in patients after stroke [53]. In the study, peak urinary titin N-terminal fragment during the seven days of admission was correlated with the modified Rankin Scale score ($r = 0.55$, $p < 0.01$), National Institutes of Health Stroke Scale score ($r = 0.72$, $p < 0.01$), and Barthel index ($r = -0.59$, $p < 0.01$) at the time of hospital discharge. In the multivariate analysis adjusted for the disease severity, the urinary N-terminal fragment on day 2 predicted the functional outcome at hospital discharge (odds ratio, 1.11; 95% CI, 1.01–1.28). This study excluded patients with in-hospital onset, not having independent activities of daily living, dialysis, surgery, and seizure. Thus, it is reasonable to think that the urinary titin N-fragment reflected muscle breakdown and subsequent functional impairments.

Two studies groups have recently reported the usefulness of urinary titin N-fragment in ICU-AW. Nakanishi et al. investigated the urinary titin N-fragment in 56 non-surgical critically ill patients, and found that the cumulative urinary titin N-fragment till discharge or day 7 was higher in ICU-AW than non-ICU-AW patients (314.1 [181.5–464.7] vs 86.6 [66.3–171.1], $p = 0.01$) [7]. In the study, urinary titin level on day 2 predicted ICU-AW with sensitivity of 78% and specificity of 81% at the cut-off value of 64.8 pmol/mg Cr. On the other hand, Nakano et al. investigated 50 consecutive critically ill patients, and found that the medical research council score was lower in the high urinary titin N-fragment group (37.0 [24.0–56.0] vs. 56.0 [51.0–60.0], $p = 0.023$) [8]. In multivariate analysis, urinary titin N-fragment was independently associated with medical research council score < 48 , almost equivalent with ICU-AW, after adjusting for age, sex, sequential organ failure assessment score, and steroid dose (adjusted odds ratio: 1.02 [95% CI: 1.00–1.03], $p = 0.02$). In their study, the mean urinary titin N-fragment level during the first 7 days of ICU admission predicted ICU-AW with a sensitivity of 61.9% and specificity of 89.7% at the cut-off value of 100 pmol/mg Cr. The area under the curve to predict medical research council score < 48 was 0.810 (95% CI: 0.688–0.931), whereas creatine kinase had an area under the curve of 0.654 (95% CI: 0.494–0.814). Since titin is a functional protein, it is theoretically understandable that urinary titin is a better biomarker of ICU-AW than creatine kinase, which is an enzyme found in various tissues [54]. Indeed, another study reported that creatinine kinase level did not differ in ICU-AW or non-ICU-AW patients (405 vs. 508 pmol/mg Cr, $p = 0.10$) [55].

It is beneficial if we predict ICU-AW using the urinary titin N-fragment because ICU-AW is a preventable condition. Nutritional support and rehabilitation can prevent ICU-AW [56]. In patients with risk of ICU-AW, we can provide intense nutrition and rehabilitation management. Moreover, we can avoid or at least reduce the risk medications including catecholamines, steroids, or neuromuscular blockers [51, 57, 58]. The measurement of urinary titin N-fragment may change our clinical practice regarding the management of critically ill patients.

5. PICS

PICS is a state characterized by physical, psychological, or cognitive impairments persisting beyond ICU discharge [10]. Acute respiratory distress syndrome survivors have prolonged muscle atrophy, impaired gait speed, and a deteriorated 6-minute walk distance at 6 to 12 months after ICU discharge [59]. These physical dysfunctions persist up to five years in some patients [11]. In a study, 46% of patients had persistent symptoms of ICU-AW from 5 to 10 years [60]. These prolonged physical dysfunctions hinder patients from returning to work [61].

These days, PICS has been gaining increased attention because of the aging society and the coronavirus disease 2019 (COVID-19) pandemic [62]. The elderly population is increasing worldwide, and this population has the high risk of PICS [10]. At 12 months after hospital discharge, the Barthel index was lower in patients above 75 years old than in 65 to 74 years old patients ($p < 0.01$) [63]. On the other hand, in COVID-19, muscle weakness lower than 48 was observed in 66% of patients [64], and ICU-AW was observed in 52% of patients at ICU discharge and 27% of patients at hospital discharge after the COVID-19 infection [65]. After the COVID-19 pandemic, the PICS pandemic is anticipated, requiring some preparation [66].

The loss of titin may be a cause of the prolonged physical dysfunction of PICS. We considered two hypotheses: 1) Prominent muscle breakdown in the ICU, 2) Prolonged muscle breakdown after hospital discharge (Figure 2).

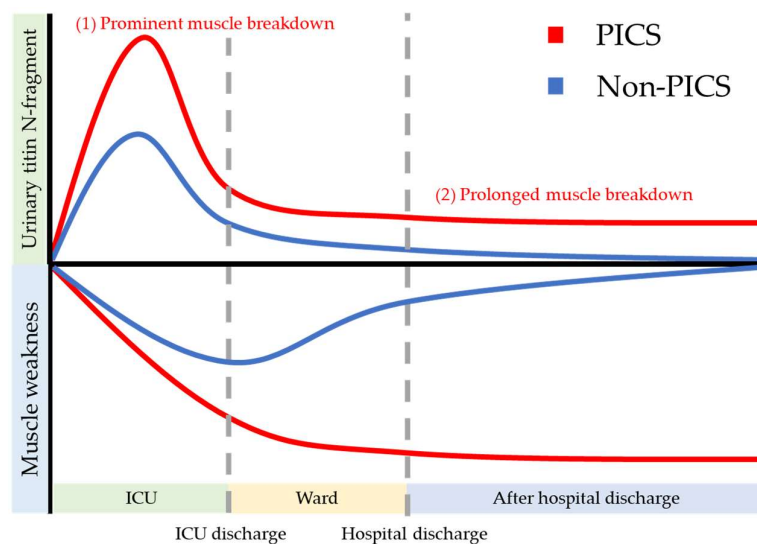


Figure 2. This is a conceptual image of urinary titin N-fragment and muscle weakness in PICS. In PICS, urinary titin N-fragment may be elevated due to the prominent muscle breakdown in the acute phase or prolonged muscle breakdown in the chronic phase, leading to the muscle weakness after hospital discharge. PICS: post-intensive care syndrome.

First, prominent muscle breakdown will lead to increased muscle atrophy and weakness. The change in the acute phase may prolong into the PICS. There are several strategies to prevent the prominent muscle breakdown in the acute phase. Rehabilitation has proven to be effective in preventing muscle atrophy and physical dysfunction [67, 68]. Nakanishi et al. reported that electrical muscle stimulation was effective in preventing muscle breakdown [69]. In the study, blood branched-chain amino acid, which is an important muscle component, was investigated, and the amino acid level was lower in the patients who received the electrical muscle stimulation intervention (40.5% [-7.4% to 75.3%] vs. 71.5% [38.8% to 116.9%]), suggesting a decrease in muscle breakdown. Another strategy is to ensure sufficient protein intake during the acute phase. Nakamura et al. reported that protein intake of 1.5 g/kg/day prevented muscle atrophy during the first 10 days of ICU admission,

compared with 0.8 g/kg/day ($12.9\% \pm 8.5\%$ vs. $16.9\% \pm 7.0\%$ in 1.5 vs. 0.8 g/kg/day, $p < 0.01$) [70]. These strategies in the acute phase will possibly prevent PICS.

Second, patients with PICS may have prolonged muscle breakdown due to the chronic inflammation or decreased mobility. Some patients experience chronic inflammation, which is called the Persistent Inflammation, Immunosuppression, and Catabolism Syndrome [71]. This condition may be caused by various conditions including disseminated intravascular coagulopathy [72] and electrolyte imbalance [73]. Chronic inflammation is known to cause muscle atrophy [74]. On the other hand, decreased mobility is also a cause of prolonged muscle breakdown. After hospital discharge, impaired physical function or endurable pain will lead to decreased mobility [75]. Although early mobilization is important to prevent physical dysfunction, Fuke et al. reported that early mobilization is not sufficient to prevent PICS [76]. One of the strategies to prevent PICS is following-up the patient after the hospital discharge. Although PICS follow-up has been shown to decrease mortality and medical cost [77], few facilities conduct PICS follow-up. In most facilities, human resources and financial support are not sufficient to conduct the PICS follow-up [78]. Thus, the international consensus conference of critical care medicine recommended to select the patients to follow-up, and the selection should be conducted within 2–4 weeks after hospital discharge [79].

We consider that the urinary titin N-fragment may be an important test for screening, follow-up, and management. Urinary titin N-fragment reflects ongoing muscle breakdown because the fragment can detect muscle breakdown at least within 2 hours of its onset [53]. The measurement of urinary titin N-fragment can identify patients at high risk of prolonged muscle breakdown. In a previous report, Oshida et al. investigated the level of urinary titin N-fragment in patients with non-alcoholic fatty liver disease [80]. They found that the urinary titin N-fragment was negatively correlated with skeletal muscle mass ($r = -0.134$, $p < 0.05$), grip strength ($r = -0.203$, $p < 0.01$), and knee extension muscle strength ($r = -0.191$, $p < 0.05$), and positively correlated with the echo intensity of the rectus femoris muscle ($r = 0.361$, $p < 0.001$), which indicates the fibrous changes of the muscle tissue [81]. Although the reported average of urinary titin N-fragment concentration is 2.1 (1.2–2.6) pmol/mg/Cr, the level was increased several times in some patients with and without non-alcoholic fatty liver disease. Another study by Miyoshi et al. investigated patients with gastrointestinal tract and hepatobiliary pancreatic malignancies, and found that the urinary titin N-fragment was significantly higher in sarcopenia (8.3 [1.9–20] vs. 4.9 [2.3–15] pmol/mg Cr, $p = 0.04$) [82]. In their study, urinary titin N-fragment showed statistically significant negative correlations with skeletal muscle volume index ($r = -0.16$, $p = 0.04$). These two studies suggest that the urinary titin N-fragment may be utilized to assess the muscle breakdown state in PICS.

Before we use the urinary titin N-fragment in clinical practice, we need to know several tips. First, spot urine test is available for the urinary titin N-fragment. Although the 24-hour urine sample looks reliable, it is not feasible during the follow-up. In urinary titin N-fragment, circadian variations are limited [83]. Second, surgical procedures may increase the urinary titin N-fragment. It is theoretically reasonable, and urinary titin N-fragment was indeed elevated shortly after a cardiac surgery [84]. Third, the standard level of the urinary titin N-fragment differs according to age. Age is associated with muscle atrophy due to the increased catabolism [85]. Indeed, in a previous study, the average urinary titin N-fragment was 2.3 ± 1.4 pmol/mg Cr in less than 30 years old, 4.3 ± 3.7 pmol/mg Cr in 31 to 60 years old, and 5.7 ± 4.0 pmol/mg Cr in more than 60 years old patients [80]. In another study, urinary titin N-fragment was correlated with age ($r = 0.11$, $p = 0.04$) [82]. Fourth, active exercise should be refrained before the measurement of urinary titin N-fragment because exercise increases the urinary titin N-fragment [86, 87]. Due to the elastic property of titin, eccentric exercises are more injurious to the titin of muscle than concentric exercise [88]. Another study investigated the change of urinary titin N-fragment in people playing soccer match, and they found that the urinary titin N-fragment was increased during the 24 hours of soccer match and returned to the baseline value at 48 hours after the match [89]. The increased urinary titin N-fragment generally remains for 2–3 days after the exercise [2]. Fifth, urinary titin N-fragment is also increased by cardiac damage because the urinary titin N-fragment reflects the breakdown products of titin, including the cardiac source. Titin

loss is a contributing factor of dilated cardiomyopathy [90]. In a previous study, increased urinary titin N-fragment predicted the mortality in patients with dilated cardiomyopathy ($p < 0.05$) [91]. We summarized several factors that lead to an increase in the urinary titin N-fragment supported by various studies (Table 1).

Table 1. Factors leading to an increase in the urinary titin N-fragment

| Factors | Level of urinary titin N-fragment | Evidence |
|----------------|--|----------|
| Age | 2.3, 4.3, 5.7 pmol/mg/Cr in ≤ 30 , 31–60, ≥ 61 years old | (80) |
| Exercise | 40–100 pmol/mg/Cr in exercise-induced muscle damage | (87, 88) |
| Surgery | 30–50 pmol/mg/Cr after cardiac surgery | (84) |
| Cardiac damage | ≥ 7.26 pmol/mg/Cr in a third of dilated cardiomyopathy | (91) |

We can intervene if patients have increased urinary titin N-fragment after hospital discharge. Nutrition and rehabilitation interventions are important in PICS [92]. After hospital discharge, continuous physical therapy is important in home or community-based settings [93]. In the exploratory analyses of a randomized controlled trial, continuous rehabilitation after hospital discharge led to the improvement of the 6-minutes walking distance at the 12 months follow-up [94]. Some patients may have persisting inflammation, but exercise has anti-inflammatory effects [95], and physical therapy is expected to reduce the inflammatory reaction [96]. Nutritional support prevents muscle breakdown in the chronic phase [97]. Regarding titin, Ulanova et al. reported that L-arginine administration decreased the loss of titin in the rat soleus muscle [98]. Since the nutritional support team involvement can improve calories and protein delivery [99, 100], a multidisciplinary team intervention is expected to be important in PICS if the urinary titin is elevated in the patients.

6. Conclusions

Titin plays an important role in the muscle, and urinary titin N-fragment can measure muscle breakdown in critically ill patients and possibly in PICS. As reported in muscle dystrophy, urinary titin N-fragment reflected the extent of muscle atrophy in critically ill patients. Furthermore, urinary titin N-fragment reflected the muscle weakness, consistent with the functional role of the urinary titin N-fragment. It is important to note that the urinary titin N-fragment increases with age, exercise, surgery, and cardiac damage, in addition to muscle atrophy and weakness. Our results indicate that urinary titin N-fragment may be a marker in PICS to identify patients with increased catabolism, requiring interventional support.

Author Contributions: NN, RT, and KH were involved in the drafting of the manuscript. MM, HS, and JO supervised and took part in the revision of the manuscript. All authors have read and agreed to the published version of the manuscript.

Funding: This work was supported by a crowdfunding project entitled the Muscle Atrophy Zero Project, using the platform “Otsucle” <<https://otsucle.jp/cf/project/2553.html>>. This work was partially supported by JSPS KAKENHI Grant Number JP20K17899.

Acknowledgments: The authors thank people who supported the Muscle Atrophy Zero Project, which aims to prevent muscle atrophy in critically ill patients. This work was partially supported by JSPS KAKENHI Grant Number JP20K17899.

Conflicts of Interest: The authors declare no conflict of interest.

References

1. Linke WA. Titin gene and protein functions in passive and active muscle. *Annu Rev Physiol* **2018**,80,389-411, doi:10.1146/annurev-physiol-021317-121234
2. Maruyama N, Asai T, Abe C, Inada A, Kawauchi T, Miyashita K, Maeda M, Matsuo M, Nabeshima YI. Establishment of a highly sensitive sandwich ELISA for the N-terminal fragment of titin in urine. *Sci Rep* **2016**,6,39375, doi:10.1038/srep39375
3. Awano H, Matsumoto M, Nagai M, Shirakawa T, Maruyama N, Iijima K, Nabeshima YI, Matsuo M. Diagnostic and clinical significance of the titin fragment in urine of Duchenne muscular dystrophy patients. *Clin Chim Acta* **2018**,476,111-116, doi:10.1016/j.cca.2017.11.024
4. Nakanishi N, Takashima T, Oto J. Muscle atrophy in critically ill patients: A review of its cause, evaluation, and prevention. *J Med Invest* **2020**,67,1-10, doi:10.2152/jmi.67.1
5. Kress JP, Hall JB. ICU-acquired weakness and recovery from critical illness. *N Engl J Med* **2014**,370,1626-1635, doi:10.1056/NEJMra1209390
6. Swist S, Unger A, Li Y, Vöge A, von Frieling-Salewsky M, Skärlén Å, Cacciani N, Braun T, Larsson L, Linke WA. Maintenance of sarcomeric integrity in adult muscle cells crucially depends on Z-disc anchored titin. *Nat Commun* **2020**,11,4479, doi:10.1038/s41467-020-18131-2
7. Nakanishi N, Tsutsumi R, Hara K, Takashima T, Nakataki E, Itagaki T, Matsuo M, Oto J, Sakaue H. Urinary titin is a novel biomarker for muscle atrophy in nonsurgical critically ill patients: A two-center, prospective observational study. *Crit Care Med* **2020**,48,1327-1333, doi:10.1097/CCM.0000000000004486
8. Nakano H, Hashimoto H, Mochizuki M, Naraba H, Takahashi Y, Sonoo T, Matsubara T, Yamakawa K, Nakamura K. Urine titin N-fragment as a biomarker of muscle injury for critical illness myopathy. *Am J Respir Crit Care Med* **2020**, doi:10.1164/rccm.202008-3089LE
9. Nakano H, Matsubara T, Yamakawa K, Nakamura K. Urine titin N-fragment as a novel biomarker for critical illness myopathy: A pilot study. *Crit Care* **2020**,24,177, doi:10.1186/s13054-020-02842-5
10. Inoue S, Hatakeyama J, Kondo Y, Hifumi T, Sakuramoto H, Kawasaki T, Taito S, Nakamura K, Unoki T, Kawai Y, et al. Post-intensive care syndrome: its pathophysiology, prevention, and future directions. *Acute Med Surg* **2019**,6,233-246, doi:10.1002/ams2.415
11. Herridge MS, Tansey CM, Matte A, Tomlinson G, Diaz-Granados N, Cooper A, Guest CB, Mazer CD, Mehta S, Stewart TE, et al. Functional disability 5 years after acute respiratory distress syndrome. *N Engl J Med* **2011**,364,1293-1304, doi:10.1056/NEJMoa1011802
12. Maruyama K, Natori R, Nonomura Y. New elastic protein from muscle. *Nature* **1976**,262,58-60, doi:10.1038/262058a0
13. Maciejewska-Skrendo A, Leźnicka K, Leońska-Duniec A, Wilk M, Filip A, Ciężczyk P, Sawczuk M. Genetics of muscle stiffness, muscle elasticity and explosive strength. *J Hum Kinet* **2020**,74,143-159, doi:10.2478/hukin-2020-0027
14. Sun S, Henriksen K, Karsdal MA, Armbrrecht G, Belavý DL, Felsenberg D, Rittweger J, Wang Y, Zheng Q, Nedergaard AF. Measurement of a MMP-2 degraded Titin fragment in serum reflects changes in muscle turnover induced by atrophy. *Exp Gerontol* **2014**,58,83-89, doi:10.1016/j.exger.2014.07.016

15. Vassiliadis E, Rasmussen LM, Byrjalsen I, Larsen DV, Chaturvedi R, Hosbond S, Saabye L, Diederichsen AC, Genovese F, Duffin KL, et al. Clinical evaluation of a matrix metalloproteinase-12 cleaved fragment of titin as a cardiovascular serological biomarker. *J Transl Med* **2012**,10,140, doi:10.1186/1479-5876-10-140
16. Nakanishi N, Oto J, Tsutsumi R, Iuchi M, Onodera M, Nishimura M. Upper and lower limb muscle atrophy in critically ill patients: An observational ultrasonography study. *Intensive Care Med* **2018**,44,263-264, doi:10.1007/s00134-017-4975-x
17. Nakanishi N, Oto J, Tsutsumi R, Akimoto Y, Nakano Y, Nishimura M. Upper limb muscle atrophy associated with in-hospital mortality and physical function impairments in mechanically ventilated critically ill adults: A two-center prospective observational study. *J Intensive Care* **2020**,8,87, doi:10.1186/s40560-020-00507-7
18. Lee ZY, Ong SP, Ng CC, Yap CSL, Engkasan JP, Barakatun-Nisak MY, Heyland DK, Hasan MS. Association between ultrasound quadriceps muscle status with premorbid functional status and 60-day mortality in mechanically ventilated critically ill patient: A single-center prospective observational study. *Clin Nutr* **2020**, doi:10.1016/j.clnu.2020.08.022
19. Files DC, Sanchez MA, Morris PE. A conceptual framework: the early and late phases of skeletal muscle dysfunction in the acute respiratory distress syndrome. *Crit Care* **2015**,19,266, doi:10.1186/s13054-015-0979-5
20. Scott JM, Downs M, Buxton R, Goetchius E, Crowell B, Ploutz-Snyder R, Hackney KJ, Ryder J, English K, Ploutz-Snyder LL. Disuse-induced muscle loss and rehabilitation: The national aeronautics and space administration bed rest study. *Crit Care Explor* **2020**,2,e0269, doi:10.1097/cce.0000000000000269
21. Sibilla A, Nydahl P, Greco N, Mungo G, Ott N, Unger I, Rezek S, Gemperle S, Needham DM, Kudchadkar SR. Mobilization of mechanically ventilated patients in switzerland. *J Intensive Care Med* **2020**,35,55-62, doi:10.1177/0885066617728486
22. Looijaard W, Molinger J, Weijs PJM. Measuring and monitoring lean body mass in critical illness. *Curr Opin Crit Care* **2018**,24,241-247, doi:10.1097/mcc.0000000000000511
23. Nakanishi N, Tsutsumi R, Okayama Y, Takashima T, Ueno Y, Itagaki T, Tsutsumi Y, Sakaue H, Oto J. Monitoring of muscle mass in critically ill patients: comparison of ultrasound and two bioelectrical impedance analysis devices. *J Intensive Care* **2019**,7,61, doi:10.1186/s40560-019-0416-y
24. Palakshappa JA, Bakhru RN. Bedside ultrasonography can and should be used in the ICU to evaluate muscle atrophy. *Ann Am Thorac Soc* **2019**,16,1107-1111, doi:10.1513/AnnalsATS.201812-879IP
25. Branea O-E, Jugariu AR, Budeanu R-G, Copotoiu SM, Copotoiu M. Ultrasonography: new insights in its applicability to explore muscle mass and musculoskeletal inflammation in critically ill patients. *Acta Medica Marisiensis* **2018**,64,147-150, doi:10.2478/amma-2018-0024
26. Udaka J, Ohmori S, Terui T, Ohtsuki I, Ishiwata S, Kurihara S, Fukuda N. Disuse-induced preferential loss of the giant protein titin depresses muscle performance via abnormal sarcomeric organization. *J Gen Physiol* **2008**,131,33-41, doi:10.1085/jgp.200709888
27. Rouillon J, Zocevic A, Leger T, Garcia C, Camadro JM, Udd B, Wong B, Servais L, Voit T, Svinartchouk F. Proteomics profiling of urine reveals specific titin fragments as biomarkers

- of Duchenne muscular dystrophy. *Neuromuscul Disord* **2014**,24,563-573, doi:10.1016/j.nmd.2014.03.012
28. Nakanishi N, Oto J, Ueno Y, Nakataki E, Itagaki T, Nishimura M. Change in diaphragm and intercostal muscle thickness in mechanically ventilated patients: A prospective observational ultrasonography study. *J Intensive Care* **2019**,7,56, doi:10.1186/s40560-019-0410-4
 29. Goligher EC, Dres M, Fan E, Rubenfeld GD, Scales DC, Herridge MS, Vorona S, Sklar MC, Rittayamai N, Lanys A, et al. Mechanical ventilation-induced diaphragm atrophy strongly impacts clinical outcomes. *Am J Respir Crit Care Med* **2018**,197,204-213, doi:10.1164/rccm.201703-0536OC
 30. Peñuelas O, Keough E, López-Rodríguez L, Carriedo D, Gonçalves G, Barreiro E, Lorente JÁ. Ventilator-induced diaphragm dysfunction: translational mechanisms lead to therapeutical alternatives in the critically ill. *Intensive Care Med Exp* **2019**,7,48, doi:10.1186/s40635-019-0259-9
 31. van der Pijl RJ, Granzier HL, Ottenheijm CAC. Diaphragm contractile weakness due to reduced mechanical loading: role of titin. *Am J Physiol Cell Physiol* **2019**,317,C167-C176, doi:10.1152/ajpcell.00509.2018
 32. van Hees HW, Ottenheijm CA, Granzier HL, Dekhuijzen PN, Heunks LM. Heart failure decreases passive tension generation of rat diaphragm fibers. *Int J Cardiol* **2010**,141,275-283, doi:10.1016/j.ijcard.2008.12.042
 33. van Hees HW, Schellekens WJ, Andrade Acuña GL, Linkels M, Hafmans T, Ottenheijm CA, Granzier HL, Scheffer GJ, van der Hoeven JG, Dekhuijzen PN, et al. Titin and diaphragm dysfunction in mechanically ventilated rats. *Intensive Care Med* **2012**,38,702-709, doi:10.1007/s00134-012-2504-5
 34. Zambon M, Beccaria P, Matsuno J, Gemma M, Frati E, Colombo S, Cabrini L, Landoni G, Zangrillo A. Mechanical ventilation and diaphragmatic atrophy in critically ill patients: An ultrasound study. *Crit Care Med* **2016**,44,1347-1352, doi:10.1097/ccm.0000000000001657
 35. Hussain SN, Cornachione AS, Guichon C, Al Khunaizi A, Leite Fde S, Petrof BJ, Mofarrahi M, Moroz N, de Varennes B, Goldberg P, et al. Prolonged controlled mechanical ventilation in humans triggers myofibrillar contractile dysfunction and myofilament protein loss in the diaphragm. *Thorax* **2016**,71,436-445, doi:10.1136/thoraxjnl-2015-207559
 36. Lindqvist J, van den Berg M, van der Pijl R, Hooijman PE, Beishuizen A, Elshof J, de Waard M, Girbes A, Spoelstra-de Man A, Shi ZH, et al. Positive end-expiratory pressure ventilation induces longitudinal atrophy in diaphragm fibers. *Am J Respir Crit Care Med* **2018**,198,472-485, doi:10.1164/rccm.201709-1917OC
 37. Bogomolovas J, Gasch A, Bajoras V, Karčiauskaitė D, Šerpytis P, Grabauskienė V, Labeit D, Labeit S. Cardiac specific titin N2B exon is a novel sensitive serological marker for cardiac injury. *Int J Cardiol* **2016**,212,232-234, doi:10.1016/j.ijcard.2016.03.045
 38. Filyk O. Prevention of respiratory muscle dysfunction due to diaphragm atrophy in children with respiratory failure. *EUREKA: Health Sciences* **2020**,40-45, doi:10.21303/2504-5679.2020.001525
 39. O'Rourke J, Soták M, Curley GF, Doolan A, Henlín T, Mullins G, Tyll T, Omlie W, Ranieri MV. Initial assessment of the percutaneous electrical phrenic nerve stimulation system in

- patients on mechanical ventilation. *Crit Care Med* **2020**,48,e362-e370, doi:10.1097/ccm.0000000000004256
40. Spinelli E, Carlesso E, Mauri T. Extracorporeal support to achieve lung-protective and diaphragm-protective ventilation. *Curr Opin Crit Care* **2020**,26,66-72, doi:10.1097/MCC.0000000000000686
 41. Nakanishi N, Okamoto Y, Okahisa T, Oto J. Early initiation of awake veno-venous extracorporeal membrane oxygenation can attenuate muscle atrophy and weakness in acute respiratory distress syndrome. *Cureus* **2020**,12,e9926, doi:10.7759/cureus.9926
 42. Formenti P, Umbrello M, Dres M, Chiumello D. Ultrasonographic assessment of parasternal intercostal muscles during mechanical ventilation. *Ann Intensive Care* **2020**,10,120, doi:10.1186/s13613-020-00735-y
 43. Ijland MM, Lemson J, van der Hoeven JG, Heunks LMA. The impact of critical illness on the expiratory muscles and the diaphragm assessed by ultrasound in mechanically ventilated children. *Ann Intensive Care* **2020**,10,115, doi:10.1186/s13613-020-00731-2
 44. Lopate G, Pestronk A, Yee WC. N lines in a myopathy with myosin loss. *Muscle Nerve* **1998**,21,1216-1219, doi:10.1002/(sici)1097-4598(199809)21:9<1216::aid-mus17>3.0.co;2-p
 45. Jonkman AH, Frenzel T, McCaughey EJ, McLachlan AJ, Boswell-Ruys CL, Collins DW, Gandevia SC, Girbes ARJ, Hoiting O, Kox M, et al. Breath-synchronized electrical stimulation of the expiratory muscles in mechanically ventilated patients: A randomized controlled feasibility study and pooled analysis. *Crit Care* **2020**,24,628, doi:10.1186/s13054-020-03352-0
 46. Wieske L, Dettling-Ihnenfeldt DS, Verhamme C, Nollet F, van Schaik IN, Schultz MJ, Horn J, van der Schaaf M. Impact of ICU-acquired weakness on post-ICU physical functioning: A follow-up study. *Crit Care* **2015**,19,196, doi:10.1186/s13054-015-0937-2
 47. Stevens RD, Marshall SA, Cornblath DR, Hoke A, Needham DM, de Jonghe B, Ali NA, Sharshar T. A framework for diagnosing and classifying intensive care unit-acquired weakness. *Crit Care Med* **2009**,37,S299-308, doi:10.1097/CCM.0b013e3181b6ef67
 48. Van Aerde N, Meersseman P, Debaveye Y, Wilmer A, Gunst J, Casaer MP, Bruyninckx F, Wouters PJ, Gosselink R, Van den Berghe G, et al. Five-year impact of ICU-acquired neuromuscular complications: A prospective, observational study. *Intensive Care Med* **2020**,46,1184-1193, doi:10.1007/s00134-020-05927-5
 49. Wieske L, Witteveen E, Petzold A, Verhamme C, Schultz MJ, van Schaik IN, Horn J. Neurofilaments as a plasma biomarker for ICU-acquired weakness: An observational pilot study. *Crit Care* **2014**,18,R18, doi:10.1186/cc13699
 50. Friedrich O, Diermeier S, Larsson L. Weak by the machines: muscle motor protein dysfunction - a side effect of intensive care unit treatment. *Acta Physiol (Oxf)* **2018**,222, doi:10.1111/apha.12885
 51. Larsson L, Li X, Edström L, Eriksson LI, Zackrisson H, Argenti C, Schiaffino S. Acute quadriplegia and loss of muscle myosin in patients treated with nondepolarizing neuromuscular blocking agents and corticosteroids: mechanisms at the cellular and molecular levels. *Crit Care Med* **2000**,28,34-45, doi:10.1097/00003246-200001000-00006
 52. Chen SP, Sheu JR, Lin AC, Hsiao G, Fong TH. Decline in titin content in rat skeletal muscle after denervation. *Muscle Nerve* **2005**,32,798-807, doi:10.1002/mus.20432

53. Ishihara M, Nakanishi N, Tsutsumi R, Hara K, Machida K, Yamamoto N, Kanematsu Y, Sakaue H, Oto J, Takagi Y. Elevated urinary titin and its associated clinical outcomes after acute stroke. *J Stroke Cerebrovasc Dis* **2020**,30,1-6, doi:10.1016/j.jstrokecerebrovasdis.2020.105561
54. Moghadam-Kia S, Oddis CV, Aggarwal R. Approach to asymptomatic creatine kinase elevation. *Cleve Clin J Med* **2016**,83,37-42, doi:10.3949/ccjm.83a.14120
55. De Jonghe B, Sharshar T, Lefaucheur JP, Authier FJ, Durand-Zaleski I, Boussarsar M, Cerf C, Renaud E, Mesrati F, Carlet J, et al. Paresis acquired in the intensive care unit: A prospective multicenter study. *JAMA* **2002**,288,2859-2867, doi:10.1001/jama.288.22.2859
56. Zhang L, Hu W, Cai Z, Liu J, Wu J, Deng Y, Yu K, Chen X, Zhu L, Ma J, et al. Early mobilization of critically ill patients in the intensive care unit: A systematic review and meta-analysis. *PLoS One* **2019**,14,e0223185, doi:10.1371/journal.pone.0223185
57. Yang T, Li Z, Jiang L, Xi X. Corticosteroid use and intensive care unit-acquired weakness: A systematic review and meta-analysis. *Crit Care* **2018**,22,187, doi:10.1186/s13054-018-2111-0
58. Wolfe KS, Patel BK, MacKenzie EL, Giovanni SP, Pohlman AS, Churpek MM, Hall JB, Kress JP. Impact of vasoactive medications on ICU-acquired weakness in mechanically ventilated patients. *Chest* **2018**,154,781-787, doi:10.1016/j.chest.2018.07.016
59. Chan KS, Mourtzakis M, Aronson Friedman L, Dinglas VD, Hough CL, Ely EW, Morris PE, Hopkins RO, Needham DM. Evaluating muscle mass in survivors of acute respiratory distress syndrome: A 1-year multicenter longitudinal study. *Crit Care Med* **2018**,46,1238-1246, doi:10.1097/ccm.0000000000003183
60. Meyer-Frießem CH, Malewicz NM, Rath S, Ebel M, Kaisler M, Tegenthoff M, Schildhauer TA, Pogatzki-Zahn EM, Maier C, Zahn PK. Incidence, time course and influence on quality of life of intensive care unit-acquired weakness symptoms in long-term intensive care survivors. *J Intensive Care Med* **2020**,885066620949178, doi:10.1177/0885066620949178
61. Kamdar BB, Sepulveda KA, Chong A, Lord RK, Dinglas VD, Mendez-Tellez PA, Shanholtz C, Colantuoni E, von Wachter TM, Pronovost PJ, et al. Return to work and lost earnings after acute respiratory distress syndrome: A 5-year prospective, longitudinal study of long-term survivors. *Thorax* **2018**,73,125-133, doi:10.1136/thoraxjnl-2017-210217
62. Bektas A, Schurman SH, Franceschi C, Ferrucci L. A public health perspective of aging: do hyper-inflammatory syndromes such as COVID-19, SARS, ARDS, cytokine storm syndrome, and post-ICU syndrome accelerate short- and long-term inflammaging? *Immun Ageing* **2020**,17,23, doi:10.1186/s12979-020-00196-8
63. Sacanella E, Perez-Castejon JM, Nicolas JM, Masanes F, Navarro M, Castro P, Lopez-Soto A. Functional status and quality of life 12 months after discharge from a medical ICU in healthy elderly patients: A prospective observational study. *Crit Care* **2011**,15,R105, doi:10.1186/cc10121
64. Wang Z, Wang Z, Sun R, Wang X, Gu S, Zhang X, Huang H. Timely rehabilitation for critical patients with COVID-19: Another issue should not be ignored. *Crit Care* **2020**,24,273, doi:10.1186/s13054-020-02967-7
65. Van Aerde N, Van den Berghe G, Wilmer A, Gosselink R, Hermans G, Meersseman P, Gunst J, Aerts V, Balthazar T, Barbé A, et al. Intensive care unit acquired muscle weakness in COVID-19 patients. *Intensive Care Med* **2020**,46,2083-2085, doi:10.1007/s00134-020-06244-7

66. Stam HJ, Stucki G, Bickenbach J. Covid-19 and post intensive care syndrome: A call for action. *J Rehabil Med* **2020**,52,jrm00044, doi:10.2340/16501977-2677
67. Hickmann CE, Castanares-Zapatero D, Deldicque L, Van den Bergh P, Caty G, Robert A, Roeseler J, Francaux M, Laterre PF. Impact of very early physical therapy during septic shock on skeletal muscle: A randomized controlled trial. *Crit Care Med* **2018**,46,1436-1443, doi:10.1097/ccm.0000000000003263
68. Schujmann DS, Teixeira Gomes T, Lunardi AC, Zoccoler Lamano M, Fragoso A, Pimentel M, Peso CN, Araujo P, Fu C. Impact of a progressive mobility program on the functional status, respiratory, and muscular systems of ICU patients: A randomized and controlled trial. *Crit Care Med* **2020**,48,491-497, doi:10.1097/ccm.0000000000004181
69. Nakanishi N, Oto J, Tsutsumi R, Yamamoto T, Ueno Y, Nakataki E, Itagaki T, Sakaue H, Nishimura M. Effect of electrical muscle stimulation on upper and lower limb muscles in critically ill patients: A two-center randomized controlled trial. *Crit Care Med* **2020**,48,e997-e1003, doi:10.1097/CCM.0000000000004522
70. Nakamura K, Nakano H, Naraba H, Mochizuki M, Takahashi Y, Sonoo T, Hashimoto H, Morimura N. High protein versus medium protein delivery under equal total energy delivery in critical care: A randomized controlled trial. *Clin Nutr* **2020**,7,30401-30405, doi:10.1016/j.clnu.2020.07.036
71. Nakamura K, Ogura K, Nakano H, Naraba H, Takahashi Y, Sonoo T, Hashimoto H, Morimura N. C-reactive protein clustering to clarify persistent inflammation, immunosuppression and catabolism syndrome. *Intensive Care Med* **2020**,46,437-443, doi:10.1007/s00134-019-05851-3
72. Nakamura K, Ogura K, Nakano H, Naraba H, Takahashi Y, Sonoo T, Hashimoto H, Goto T. Disseminated intravascular coagulopathy is associated with the outcome of persistent inflammation, immunosuppression and catabolism syndrome. *J Clin Med* **2020**,9,2662, doi:10.3390/jcm9082662
73. Rugg C, Ströhle M, Treml B, Bachler M, Schmid S, Kreutziger J. ICU-acquired hyponatremia is associated with persistent inflammation, immunosuppression and catabolism syndrome. *J Clin Med* **2020**,9,3017, doi:10.3390/jcm9093017
74. Webster JM, Kempen L, Hardy RS, Langen RCJ. Inflammation and skeletal muscle wasting during cachexia. *Front Physiol* **2020**,11,597675, doi:10.3389/fphys.2020.597675
75. Puthucherry ZA, Gensichen JS, Cakiroglu AS, Cashmore R, Edbrooke L, Heintze C, Neumann K, Wollersheim T, Denehy L, Schmidt KFR. Implications for post critical illness trial design: sub-phenotyping trajectories of functional recovery among sepsis survivors. *Crit Care* **2020**,24,577, doi:10.1186/s13054-020-03275-w
76. Fuke R, Hifumi T, Kondo Y, Hatakeyama J, Takei T, Yamakawa K, Inoue S, Nishida O. Early rehabilitation to prevent postintensive care syndrome in patients with critical illness: A systematic review and meta-analysis. *BMJ Open* **2018**,8,e019998, doi:10.1136/bmjopen-2017-019998
77. Snell KP, Beiter CL, Hall EL, Junod AS, Wilson BJ, Lepone DK, McIntyre JR, Swartz DP, Berger AL, Kirchner HL, et al. A novel approach to ICU survivor care: A population health quality improvement project. *Crit Care Med* **2020**,48,e1164-e1170, doi:10.1097/ccm.0000000000004579

78. Haines KJ, McPeake J, Hibbert E, Boehm LM, Aparanji K, Bakhru RN, Bastin AJ, Beesley SJ, Beveridge L, Butcher BW, et al. Enablers and barriers to implementing ICU follow-up clinics and peer support groups following critical illness: The thrive collaboratives. *Crit Care Med* **2019**,47,1194-1200, doi:10.1097/ccm.0000000000003818
79. Mikkelsen ME, Still M, Anderson BJ, Bienvenu OJ, Brodsky MB, Brummel N, Butcher B, Clay AS, Felt H, Ferrante LE, et al. Society of Critical Care Medicine's international consensus conference on prediction and identification of long-term impairments after critical illness. *Crit Care Med* **2020**,48,1670, doi:10.1097/ccm.0000000000004586
80. Oshida N, Shida T, Oh S, Kim T, Isobe T, Okamoto Y, Kamimaki T, Okada K, Suzuki H, Ariizumi SI, et al. Urinary levels of titin-N fragment, a skeletal muscle damage marker, are increased in subjects with nonalcoholic fatty liver disease. *Sci Rep* **2019**,9,19498, doi:10.1038/s41598-019-56121-7
81. Pillen S, Tak RO, Zwarts MJ, Lammens MM, Verrijp KN, Arts IM, van der Laak JA, Hoogerbrugge PM, van Engelen BG, Verrips A. Skeletal muscle ultrasound: correlation between fibrous tissue and echo intensity. *Ultrasound Med Biol* **2009**,35,443-446, doi:10.1016/j.ultrasmedbio.2008.09.016
82. Miyoshi K, Shimoda M, Udo R, Oshiro Y, Suzuki S. Urinary titin N-terminal fragment concentration is an indicator of preoperative sarcopenia and nutritional status in patients with gastrointestinal tract and hepatobiliary pancreatic malignancies. *Nutrition* **2020**,79-80,110957, doi:10.1016/j.nut.2020.110957
83. Matsuo M, Awano H, Maruyama N, Nishio H. Titin fragment in urine: a noninvasive biomarker of muscle degradation. *Adv Clin Chem* **2019**,90,1-23, doi:10.1016/bs.acc.2019.01.001
84. Tanihata J, Nishioka N, Inoue T, Bando K, Minamisawa S. Urinary titin is increased in patients after cardiac surgery. *Front Cardiovasc Med* **2019**,6,7, doi:10.3389/fcvm.2019.00007
85. Kim KW, Cho HJ, Khaliq SA, Son KH, Yoon MS. Comparative analyses of mTOR/Akt and muscle atrophy-related signaling in aged respiratory and gastrocnemius muscles. *Int J Mol Sci* **2020**,21,2862, doi:10.3390/ijms21082862
86. Lee M, Goral K, Flis D, Skrobot W, Cieminski K, Olek R, Akimoto T, Ziolkowski W. Changes in urinary titin fragment in response to different types of dynamic eccentric exercises. *Int J Sports Med* **2020**, doi:10.1055/a-1273-8082
87. Yamaguchi S, Suzuki K, Kanda K, Inami T, Okada J. Changes in urinary titin N-terminal fragments as a biomarker of exercise-induced muscle damage in the repeated bout effect. *J Sci Med Sport* **2020**,23,536-540, doi:10.1016/j.jsams.2019.12.023
88. Yamaguchi S, Suzuki K, Inami T, Kanda K, Hanye Z, Okada J. Changes in urinary titin N-terminal fragment concentration after concentric and eccentric exercise. *J Sports Sci Med* **2020**,19,121-129,
89. Tanabe Y, Shimizu K, Kondo E, Yasumatsu M, Nakamura D, Sagayama H, Takahashi H. Urinary N-terminal fragment of titin reflects muscle damage after a soccer match in male collegiate soccer players. *J Strength Cond Res* **2020**, doi:10.1519/jsc.0000000000003923
90. Tharp C, Mestroni L, Taylor M. Modifications of titin contribute to the progression of cardiomyopathy and represent a therapeutic target for treatment of heart failure. *J Clin Med* **2020**,9, doi:10.3390/jcm9092770

91. Yoshihisa A, Kimishima Y, Kiko T, Sato Y, Watanabe S, Kanno Y, Abe S, Miyata M, Sato T, Suzuki S, et al. Usefulness of urinary N-terminal fragment of titin to predict mortality in dilated cardiomyopathy. *Am J Cardiol* **2018**,121,1260-1265, doi:10.1016/j.amjcard.2018.01.046
92. Wischmeyer PE, Puthuchear Z, San Millán I, Butz D, Grocott MPW. Muscle mass and physical recovery in ICU: Innovations for targeting of nutrition and exercise. *Curr Opin Crit Care* **2017**,23,269-278, doi:10.1097/mcc.0000000000000431
93. Smith JM, Lee AC, Zeleznik H, Coffey Scott JP, Fatima A, Needham DM, Ohtake PJ. Home and community-based physical therapist management of adults with post-intensive care syndrome. *Phys Ther* **2020**,100,1062-1073, doi:10.1093/ptj/pzaa059
94. Denehy L, Skinner EH, Edbrooke L, Haines K, Warrillow S, Hawthorne G, Gough K, Hoorn SV, Morris ME, Berney S. Exercise rehabilitation for patients with critical illness: A randomized controlled trial with 12 months of follow-up. *Crit Care* **2013**,17,R156, doi:10.1186/cc12835
95. Gleeson M, Bishop NC, Stensel DJ, Lindley MR, Mastana SS, Nimmo MA. The anti-inflammatory effects of exercise: mechanisms and implications for the prevention and treatment of disease. *Nat Rev Immunol* **2011**,11,607-615, doi:10.1038/nri3041
96. Elliott D, Puthuchear Z. Is rehabilitation post critical illness a new anti-inflammatory agent? *Thorax* **2016**,71,783-784, doi:10.1136/thoraxjnl-2016-208844
97. Brook MS, Wilkinson DJ, Atherton PJ. Nutrient modulation in the management of disease-induced muscle wasting: Evidence from human studies. *Curr Opin Clin Nutr Metab Care* **2017**,20,433-439, doi:10.1097/mco.0000000000000413
98. Ulanova A, Gritsyna Y, Salmov N, Lomonosova Y, Belova S, Nemirovskaya T, Shenkman B, Vikhlyantsev I. Effect of L-arginine on titin expression in rat soleus muscle after hindlimb unloading. *Front Physiol* **2019**,10,1221, doi:10.3389/fphys.2019.01221
99. Oh E, Shim H, Yon HJ, Moon JS, Kang DR, Jang JY. Effectiveness of a multidisciplinary team for nutrition support in a trauma intensive care unit. *Acute Crit Care* **2020**,35,142-148, doi:10.4266/acc.2020.00318
100. Lopes M, Ceniccola GD, Araújo WMC, Akutsu R. Nutrition support team activities can improve enteral nutrition administration in intensive care units. *Nutrition* **2019**,57,275-281, doi:10.1016/j.nut.2018.04.017