

Title: Memory generation and re-activation in food allergy

Authors: Joshua F.E. Koenig¹, Kelly Bruton¹, Allyssa Phelps¹, Emily Grydziusko¹, Rodrigo Jiménez-Saiz^{1,2,3}, Manel Jordana¹

¹McMaster Immunology Research Centre, Department of Medicine, McMaster University, Hamilton, Ontario, Canada

²Instituto de Investigación Sanitaria Hospital Universitario Princesa, Department of Immunology, Madrid, Spain

³Centro Nacional de Biotecnología (CNB)-CSIC, Department of Immunology and Oncology, Madrid, Spain

Correspondence to: Joshua F.E. Koenig, McMaster Immunology Research Centre, Department of Medicine, Faculty of Health Sciences, McMaster University, 1280 Main Street West, Hamilton, ON, Canada, L8S 4L8. Email: koenigjf@mcmaster.ca

Title: Memory generation and re-activation in food allergy

Keywords: food allergy; IgE; memory responses; anaphylaxis; B cells; T cells;

Abstract: Recent evidence has highlighted the critical role of memory cells in maintaining lifelong food allergies, thereby identifying these cells as therapeutic targets. IgG⁺ memory B cells replenish pools of IgE-secreting cells upon allergen exposure, which contract thereafter due to the short lifespan of tightly regulated IgE-expressing cells. Advances in the detection and highly dimensional analysis of allergen-specific B and T cells from allergic patients have provided insight on their phenotype and function. The newly identified Th2A and Tfh13 populations represent a leap in our understanding of allergen-specific T cell phenotypes, though how these populations contribute to IgE memory responses remains poorly understood. Within, we discuss the mechanisms by which memory B and T cells are activated, integrating knowledge from human systems and fundamental research. We then focus on memory reactivation; specifically, on the pathways of secondary IgE responses. Throughout, we identify areas of future research which will help identify immunotargets for a transformative therapy for food allergy.

Main text

Introduction

“They had no fear for themselves for the same man was never attacked twice -never at least fatally”.

This quote from Thucydides (460-400 BC) in *“The history of the Peloponnesian war”* intimates the critical importance of immune memory for survival.¹ The 20th century witnessed an explosion of knowledge on immune memory against bacteria and viruses, a program referred to as “type 1 immunity”, which is generically mediated by CD4⁺ Th1 cells and IgG antibodies. By comparison, our understanding of protective memory against helminths, poisons, and toxins- the “type 2 immunity” which is mediated by CD4⁺ Th2 cells and IgE- has lagged behind. These protective mechanisms can be misdirected toward food antigens, causing potentially lethal reactions. What survival advantage might be conferred by a pernicious immune reaction against largely innocuous foods? In this regard, it has been recently speculated that food allergy, with the attendant imprinting of memory, might be an aberration of homeostatic immune responses whose main purpose is food quality control.^{2,3}

IgE is the principal effector molecule in food-induced type 2 responses. Allergen-specific IgE is bound to tissue resident mast cells and circulating basophils through its high-affinity receptor, FcεRI. Upon re-exposure, the allergen crosslinks surface-bound IgE and triggers mast cell and basophil degranulation, which causes acute allergic reactions including anaphylaxis. Intriguingly, some food allergies such as those to peanuts, tree nuts, fish and shellfish are highly associated with anaphylaxis and are lifelong in about 80% of patients.⁴ This observation spearheaded intense research over the last 10 years to uncover the immunological basis of persistent allergy.⁵

Memory Cells Maintain Lifelong Food Allergies

Persistent humoral immunity induced through vaccination has generally been attributed to long-lived plasma cells (PCs).⁶ This notion has been extrapolated to food allergy,^{7,8} but evidence from both mice and humans has disputed this proposition.⁹ For example, in seasonal allergies, the levels of allergen-specific IgE dramatically decline off season, only to re-emerge when allergen returns.¹⁰ Also, in humans allergic to a common fish parasite, *Anisakis* spp., strict avoidance of fish consumption for at least 10 months caused a decline from >100 kU/L to <3 kU/L in allergen-specific IgE titers, which relapsed upon fish reintroduction.¹¹ Lastly, it has been recently reported that levels of IgE to galactose- α -1,3-galactose decline over time in patients who avoid tick bites.¹² Along these lines, allergen-specific IgE titers and IgE⁺ PCs became undetectable at 6 months post-sensitization in peanut (PN)-allergic mice.¹³ However, the capacity to regenerate IgE following subsequent non-sensitizing allergen exposures persisted for at least 15 months. Given that long-lived PCs are terminally differentiated, non-proliferative cells, these findings argue that memory B cells (MBCs) play a significant role in facilitating IgE regeneration and persistent allergy.⁹ This raises the question of where IgE memory is held.

The existence and functional relevance of IgE⁺ MBCs in humans has been contentious. Current evidence shows that these cells are extremely rare or non-existent¹⁴ and therefore indicates that non-IgE⁺ MBCs hold IgE memory. Nearest neighbor analyses of human peripheral blood mononuclear cells (PBMCs) IGH repertoires identified IgG1⁺ B cells as the primary intermediate of IgE-expressing cells in the circulation.¹⁵ This is consistent with mouse models where IgG1⁺ MBCs facilitated secondary IgE responses.^{13,16-18} Collectively, this research has advanced the notion that long-lived IgG1⁺ MBCs are the main reservoir of IgE-secreting cells and, therefore, the foundation of allergy persistence. CD4⁺ T cells and IL-4 receptor signaling are critical for MBC reactivation and IgE class-switch recombination (CSR), thereby identifying this axis as an alluring therapeutic target in food allergy.^{13,19} Presumably, memory CD4⁺ T cells provide the IL-4/IL-13 necessary for IgE CSR, but the intricate details of how memory cells interact

during a recall response remain poorly understood. It is through deciphering this interplay that novel therapeutic targets in food allergy will be identified.

Phenotype of Allergen-Specific Memory Cells

Understanding persistent of food allergy requires a precise definition of the phenotype and function of allergen-specific memory B and T cells. A pivotal limitation is the rarity and technical difficulty of identifying and isolating these cells in humans. For instance, only ~9 to 100 allergen-specific CD4⁺ T cells are detected per million CD4⁺ T cells in PBMCs of allergic patients; similarly, allergen-specific B cells account for ~200 cells/million B cells.²⁰⁻²² While studies in PBMCs are lowly invasive, they may not be representative of allergen-specific memory cells in mucosal tissues and in secondary lymphoid organs (SLOs). Still, research over the last decade has advanced our understanding of the memory cells that hold IgE responses.

As abovementioned, IgG1⁺ MBCs are thought to be the sole reservoir of IgE-producing cells in mice. In humans, cross-sectional studies using high-throughput sequencing of the immunoglobulin repertoire from allergic and healthy patients have revealed that all upstream isotypes (IgM, IgD, IgG1, IgG2, IgG3, IgG4, IgA1) are clonally related to IgE.^{15,23} IgG1 and IgA1 are the most commonly IgE-related isotype in the PBMCs and in the gastrointestinal tract, respectively. It is unclear whether these represent clonal families from a primary or secondary response but, given the high-rate of accidental re-exposures in PN-allergic patients, it could be inferred that isotypes other than IgG1 hold IgE memory.

Reservoirs other than IgG1⁺ MBCs have not been thoroughly studied, but some insight has been attained about MBC phenotypes in IgE reactivation. In mice, a population of mature CD80⁺CD73⁺PDL2⁺IgG1⁺ MBCs yields the majority of secondary IgE-secreting cells.¹⁶ Less mature MBC populations (CD80⁻CD73^{+/-}) re-enter the germinal center (GC) to affinity mature but contribute sparingly to secondary IgE production.¹⁶ In humans, MBC phenotypes are less clear.

Classically, the MBC population has been defined by the surface expression of CD27, which has been proven ineffective to encompass all MBC populations.²⁴ In this regard, Glass *et al.* performed a highly multiplexed single-cell screen of PBMCs, bone marrow, lymph nodes and tonsils from healthy donors.²⁵ They identified 6 subsets of MBCs, some of them CD27⁺. CD45RB was shown to be useful for MBC identification and, its expression, in combination with that of CD27, correlated better with the degree of somatic hypermutation than CD27 alone. Interestingly, segregating human MBCs by their phenotype informed of function better than their isotype. This questions if the isotype is the ultimate determinant of memory IgE responses.²⁵ The mechanisms that direct MBCs towards IgE⁺ PCs must be investigated at the allergen-specific level to best target and reprogram secondary responses in food allergic patients.⁹

Human allergen-specific B cells have been detected using fluorescently-labeled allergen monomers or multimers. For example, in PN allergy most studies detect Ara h 1- and Ara h 2-specific cells as these are the dominant allergens in 80-95% of PN-allergic patients in North America,²⁶ and Ara h 2 has been reported the immunodominant PN allergen in the UK.²⁷ PN-specific B cells express somatically hypermutated B-cell receptors (BCRs) and form detectable clonal lineages including IgE-expressing cells.^{23,28-30} Multiple VDJ genes conform PN-binding paratopes, indicative of polyclonal B-cell responses. However, there is convergence of PN-specific sequences among unrelated individuals. This suggests bias in the B-cell repertoire towards PN epitopes that may be immunodominant, especially among allergic individuals.^{22,28,29,31} Consistent with observations in mice, circulating IgE-expressing cells detected in food-allergic patients were primarily plasmablasts while IgE-expressing MBCs were rare or absent.^{14,29} Additional studies could investigate the phenotype of allergen-specific MBCs in situations where memory is reactivated, such as during allergen immunotherapy (AIT) or surrounding oral food challenges.²²

The direct identification of allergen-specific CD4⁺ T cells is technically challenging because it requires the use of peptide-loaded MHC-II (in mice) or HLA (in humans).^{21,32-34} Alternatively, allergen-specific CD4⁺ T cells can be identified based on CD154 upregulation when activated *in vitro* with whole allergen or allergen-derived peptides.^{35,36} This method is simpler and is not limited by HLA haplotype. On the other hand, the stimulation could impact the gene expression of the cells and CD154 may be non-specifically upregulated via bystander activation.^{37,38} CD154⁺ cells have been used in downstream applications like single-cell RNA sequencing (sc-RNAseq) to explore preferential phenotypes among subsets of expanded clonotypes, including Th2 states associated with food allergy in PN-allergic patients.³⁹ Allergen-specific CD4⁺ T cells from PN-allergic individuals often exhibit a terminally-differentiated or mature phenotype (CD45RO⁺CD27^{low/-}) associated with poor proliferation upon restimulation and potent cytokine expression.⁴⁰⁻⁴² They also express the Th2-related markers CRTH2, CD200R, and CCR4. Numerous studies have identified subpopulations of Th2 cells which potently secrete Th2 cytokines.^{41,43-45} A comprehensive evaluation across allergic diseases defined a “Th2A” population, present only in allergic individuals, which upregulates CD161, CRTH2, CD49d and down-regulates CD45RB and CD27.⁴¹ The frequency of Th2A cells increases upon allergen exposure but, provided that these mature cells have a reduced proliferative capacity, this potentially argues that a precursor memory population seeds additional Th2A cells upon recall.

Th2A cells decrease but do not vanish following desensitization via oral AIT, though it is unclear whether the suppression of these cells directly causes desensitization.⁴¹ Likewise, while anti-IL4R α (dupilumab) treatment prevented IgE generation in PN-stimulated PBMC cultures, Th2A cells persisted as demonstrated by sc-RNAseq.¹⁹ In addition, Th2A cells have been detected by sc-RNAseq in the skin of dupilumab-treated atopic dermatitis patients for up to 1 year after clinical remission.⁴⁶ Th2A cells are likely a heterogeneous population because of the variety of cytokine profiles they are able to secrete. Other complex phenotypes such as Th2-polarized T regulatory

(Treg) cells and IL-17-secreting Th2 cells have been reported in various allergic contexts. It is unclear how these subsets relate to each other and whether they are a hermetic or plastic phenotype.^{47,48}

Th2 cells are important players in food allergy, but it remains unclear how they mechanistically contribute to different aspects of allergic pathology. Th2 cells contribute to late phase allergic inflammation, which presumably participates in the development and exacerbation of eosinophilic esophagitis.⁴⁹ However, their precise role in IgE regeneration is controversial. Recent evidence in mouse models suggest that the critical source of IL-4 in primary IgE induction is derived from T follicular helper (Tfh) cells, not Th2 cells.^{50,51} Moreover, a subpopulation of IL-13-secreting Tfh cells (Tfh13) that regulates high-affinity IgE production has been identified in mice and allergic patients.⁵² How Tfh13 cells fit among the heterogeneous Th2 cells described in allergic patients and the role of Th2 cells in IgE production has not been definitively demonstrated in humans.⁵³

Generation of Allergen-Specific Memory T Cells

Th2 cells were long thought to be the primary IgE driver in food allergy. Consequently, significant research sought to elucidate Th2 polarization. Naive CD4 T cells in the draining lymph nodes interact with migratory dendritic cells (DCs), which present food allergens that have been captured in the mucosa or the skin.^{54,55} Environmental cues (eg. IL-33, uric acid crystals, eosinophil peroxidase, etc.) during allergen capture,⁵⁶ or innate-stimulatory properties of given allergens,⁵⁷ cause DC activation (CD80, CD86, CD40), IL-12 downregulation, and expression of OX40L, which ligates OX40 on T cells. These interactions induce GATA-3, Th2 polarization, and IL-4 production in cognate CD4⁺ T cells (**Figure 1**).^{5,56} Signals exchanged during the DC-T cell synapse (IL-2, IL-7, OX40 signalling, T-cell receptor (TCR) avidity, and the duration of the TCR-

MHC interaction, etc.) influence memory Th2 cell survival.^{5,58-60} Ligation of TCRs by MHC increases responsiveness to IL-2, which promotes induction and maintenance of IL-4R α expression.^{61,62} This, in conjunction with OX40/OX40L interactions, promotes robust clonal expansion of Th2 cells and empowers survival.^{61,62} Additionally, T-cell clones with high avidity TCRs outcompete low-avidity clones for MHC interaction, resulting in heightened clonal expansion and a survival advantage.^{42,61} In sum, signals experienced by naïve CD4⁺ T cells during their initial activation influence memory fate decisions, but decisive requirements have yet to be elucidated.

The ontogeny of newly identified subsets such as Th2A cells and how they are selected into the memory pool is unknown. It is plausible that conventional Th2 cells are the precursors of the more highly differentiated Th2A cells. Th2 cells tend to produce relatively fewer cytokines, and IL-5 is mainly produced by highly differentiated Th2 cells.^{41,63} Th2A cells may gain their capacity to produce IL-5 and/or IL-9, in addition to IL-4 and IL-13, as they mature past the conventional Th2 phenotype.⁴¹ Alternatively, the observation that Th2A cells exist across numerous allergic diseases, and persist despite therapeutic intervention, may suggest that they arise from a unique differentiation pathway.^{41,46}

Tfh cells were originally considered a part of the Th2 program according to their shared expression of IL-4.⁶⁴ While the physiological relevance of Th2 cells in driving food allergy remains contentious, Tfh cells have been reported critical for IgE production.^{65,66} Tfh cell differentiation is initiated through interactions with DCs (IL-2, IL-6, ICOS, etc.) in the T-cell zone but, in contrast to Th2 cell differentiation, low IL-2R α signalling and robust ICOS co-stimulation results in Tfh commitment (**Figure 1**). Activated pre-GC Tfh cells upregulate Bcl6, effector cytokines (IL-21, IL-4), costimulatory ligands (ICOSL), and chemokine receptors to migrate to the T-B border of the SLO (CXCR5^{hi}, PD-1^{hi}, CCR7^{lo}).⁶⁷⁻⁷⁰ Tfh cell maturation evolves via interactions with antigen-primed B cells at the T-B border.^{70,71} Here, ICOS/ICOSL and CD40/CD40L costimulation and Tfh-

derived IL-21 retain the Tfh phenotype and allow these cells to penetrate the B-cell follicle to join or initiate GCs.^{50,69} It is within the GC that the newly identified Tfh13 population has been reported, but it is unknown at what point these cells commit to this phenotype.⁵² New evidence indicates that Tfh cells are dynamically selected in the GC.⁷² Some Tfh cells are selected to persist into a memory fate, wherein maintenance of long-lived Tfh cells requires continued Bcl6 expression and ICOS signaling.^{73,74} The role of memory Tfh cells in food allergy has not been assessed, though this research is relevant given the connection of Tfh cells with B-cell activation and IgE generation.

The priming site and the localization of Th2 differentiation in specific SLOs influence allergic T-cell memory formation.^{75,76} Activation imprints Th2 cells with differential homing patterns that guide their trafficking to specific sites as they enter the memory pool.⁷⁵ Memory T cells are not restricted to the circulation, even when first activated in the SLOs, and T-resident memory (Trm) cells can survey non-lymphoid tissues following the primary response.⁷⁶⁻⁷⁸ In mice with allergic asthma, long-lived lung-resident CD4⁺ Trm cells are sufficient to induce airway hyperreactivity.^{79,80} Whether Trm cells are seeded following primary allergen exposure and perform a similar role in food allergy remains unknown. Nevertheless, Trm cells are reported to accumulate in the intestines during prolonged antigen exposure, and their low threshold for local reactivation could coordinate rapid initiation of secondary responses which are often accompanied by symptoms localized to specific tissues.^{76,79,81}

Generation of Allergen-Specific MBCs

The generation of allergen-specific MBCs is T-cell dependent. Naïve B cells capture allergen from subcapsular macrophages, which sequester allergen from incoming lymph drainage (**Figure 2A**).⁸² Naïve B cells internalize allergens for presentation and migrate to the border of the B-cell follicle and the T cell zone. There they engage with activated CD4⁺ T cells, likely Tfh or pre-

GC Tfh cells rather than Th2 cells (**Figure 2B**).^{50,51,83} The Tfh/B cell synapse and the fate decisions which follow likely represent a crucial moment in the generation of allergic MBCs and IgE. Naive B cells and Tfh cells interact using a variety of signals, including MHC-II:TCR, CD40/CD40L, ICOS/ICOSL, SAP/SLAM and various cytokine signals which activate the B cell (**Figure 2B**).^{71,84}

Newly activated B cells adopt a transient CD38⁺GL7⁺ phenotype that predates GC B cells or extrafollicular MBC differentiation (**Figure 2C**).⁸⁵ Recent evidence suggests that CSR is initiated during early interactions at the T/B cell border, possibly during this intermediate stage, rather than in the GC as classically believed.⁸⁶ Indeed, even without GCs, Tfh cells are the critical source of IL-4, which suggests that IgE CSR is likely instructed at the T/B border, early in B-cell activation.^{50,51} IgG1 CSR, however, occurs in the absence of Tfh-derived IL-4 and, therefore, it is plausible that IgG1⁺ MBCs, the relevant precursors of secondary IgE, could be seeded independently of Tfh-derived IL-4.⁵¹ Furthermore, the precursors of tissue-resident MBCs are thought to be generated early in B-cell activation and IgE⁺ PC differentiation is also thought to primarily occur extrafollicularly.^{87,88} Then, it is clear that the early stages are crucial for B-cell fate decisions, but the signals that drive these various fates remain poorly understood.

Activated B cells that acquire a GC phenotype migrate deep into B-cell follicles to establish or join a GC (**Figure 2D**). The GC selection dynamics are intricate and have been reviewed elsewhere.^{83,89} The primary reservoir of mature MBCs (CD80⁺CD73⁺PDL2⁺) which yields secondary IgE appears to be GC-derived.^{85,90} Allergen-specific IgE⁺/IgG⁺ cells generally exhibit high-affinity mutations with an enrichment of replacement mutations in the CDR domains of their BCRs, which is indicative of affinity-driven selection.^{8,13} Although under some circumstances extrafollicular affinity maturation can occur,⁹¹ the maturity and high-mutation frequency of allergen-specific MBCs suggest they are GC-derived.^{13,16,17} Intriguingly, IgE-expressing cells poorly survive in GCs because, among other reasons, tonic BCR signalling induces PC

differentiation.⁹²⁻⁹⁴ The survival of IgE⁺ GC B cells appears to be under the control of Tfh13 cells localized within the GC, which drive high-affinity IgE responses associated with anaphylaxis.⁵² Ultimately, the importance of the GC in food allergy remains unclear given that GC-deficient mice generate anaphylactic IgE upon allergic sensitization and have IgE recall responses.¹³

Memory Reconstitution of Allergy

Allergen avoidance results in a decline in IgE. However, humoral IgE immunity is rapidly regained upon reactivation of immune memory.¹³ As aforementioned, allergen-specific IgE-expressing MBCs exist rarely – or not at all – and IgE⁺ PCs are short-lived.⁹ Thus, there are at least 2 critical components of secondary IgE responses: a CSR event and, subsequently, PC differentiation (**Figure 3**). In a primary response, most IgE⁺ PCs are thought to be derived following CSR in extrafollicular foci.⁸⁸ In the incipient stages of food allergy, immature, pro-GC IgG1⁺ MBCs (PDL-2⁺CD80⁺CD35⁺CD73⁺) are established.¹⁷ This subset re-enters the GC on recall to yield IgE⁺ GC B cells and may subsequently generate IgE⁺ PCs.¹⁷ Upon subsequent allergen exposures, affinity matured IgG1⁺ MBCs cells become the most populous MBC and the foremost contributors to secondary IgE production without re-entry into GCs.^{13,16}

Secondary B-cell responses in allergy are also strictly T cell-dependent.^{54,95} During recall, MBCs likely have a pronounced role in allergen presentation because the higher-affinity BCRs would enable efficient allergen capture even at low concentrations.⁹⁶ The absence of CD4⁺ T cells in a secondary response to food allergens prevents IgE production and clinical reactivity.^{13,19} That being said, MBC activation does not require antigen-experienced CD4⁺ T cells, but rather naïve CD4⁺ T cells are sufficient,⁹⁷ although how they become competent in driving type 2 responses is not well defined. One hypothesis is that allergen-specific MBCs retain intrinsic properties, such as a Th2-like polarization, enabling the maintenance of future *de novo* Th2 responses.⁹⁸ Although naïve CD4⁺ T cells together with MBCs are sufficient for secondary responses in experimental

systems, the contribution of naïve CD4⁺ T cells in a competitive environment (ie. presence of memory CD4⁺ T cells) remains in question.

IL-4 is a fundamental requirement for IgE CSR.^{99,100} In both mice and humans, antibody-mediated blockade of the IL-4R α chain abrogates IgE production in secondary responses.^{19,99,101} Most leukocytes produce IL-4, though a significant contribution from non-T cells in CSR is unlikely. In fact, the use of IL-4 reporter mice demonstrated that CD4⁺ T cells provide the majority of IL-4 in primary and secondary responses, with some contribution from both Tfh and Th2 cells.^{19,101} IL-13 also engages IL-4R α , although IgE CSR is intact in IL-13-deficient mice.¹⁰² On the other hand, IL-13 may play a nonredundant role in high-affinity IgE production, particularly in secondary responses that engage low-affinity MBC clones, or naïve B cells which in some systems are reported to be the predominant source of secondary GC B cells.⁵²

Beyond IL-4, it is plausible that other CD4⁺ T cell-derived signals are critical for IgE reactivation. In primary responses, antigen-primed B cells and CD4⁺ T cells further interact through costimulatory molecules such as CD40, ICOS and OX40.¹⁰³ In patients with hyper IgM syndrome, deficiencies in IgG, IgA, and IgE are observed due to CD40L mutations of that prevent CSR.¹⁰⁴ PN-stimulation of allergic splenocytes under CD40L-blockade, however, did not compromise MBC proliferation.¹³ Thus, it is possible that MBCs retain the requirement for CD40 engagement to undergo IgE CSR, but not for PC differentiation.

ICOS-ICOSL interactions are important because ICOS-deficient mice exhibit defective IL-4 production and impaired IgE responses following KLH-alum immunization.¹⁰⁵ Also, in secondary responses, expansion of antigen-specific B cells and class-switched antibody responses are compromised in the absence of ICOS signaling.^{71,106} The fact that ICOS is essential for the maintenance of the memory Tfh cell phenotype¹⁰⁶ may explain the impaired secondary responses observed with ICOSL blockade.⁷³

Regarding OX40, OX40L-expressing DCs promote Th2 polarization, although OX40L blockade in secondary responses does not appear to skew the Th2 phenotype.^{54,107} Rather, loss of OX40 signaling prior to allergen rechallenge compromised the accumulation and survival of reactivated T cells and the IgE boost.¹⁰⁷ Whether the OX40-OX40L interaction is occurring between T cells and DCs and/or B cells is unclear.

Forms of non-T cell-mediated help may also regulate the MBC response. Notably, IL-9R signaling in MBCs is required for a robust secondary humoral response, though T cells are not the critical source of IL-9 in this context.¹⁰⁸ While the source of biologically-relevant IL-9 is unknown, MBCs appear to produce large amounts of IL-9 during a recall response suggesting autocrine regulation of reactivation. Altogether, studies of the requirements for MBC reactivation are scarce and further investigation is warranted, specially at the tissue level.

Tissue-resident MBCs are thought to contribute to secondary IgE responses in food allergic patients, though this has not yet been adequately proven. Food-allergic mice have local Th2 cytokine production upon allergen challenge, which persists when lymphocyte migration is inhibited, indicating the presence of Trm cells.¹⁰⁹ Further, CSR is observed in mucosal tissues in allergic patients and local IgE production is reported to mediate food-induced abdominal pain.¹¹⁰ Taken together, these data indicate that resident memory populations may meaningfully contribute to disease-relevant IgE reactivation.

Immunological memory within SLOs is better understood. Memory B and T cells are readily detected in these organs and position themselves in strategic locations to induce a potent secondary response. MBCs maximize the likelihood of antigen encounter by residing in the marginal zone of the spleen and in the subcapsular sinus of the lymph node.¹¹¹ These locations are rich with CD169⁺ macrophages which, as abovementioned, capture allergens and transfer them to nearby B cells. Upon allergen encounter, these cells proliferate and generate foci in which

they differentiate primarily into MBCs and PCs, but also into secondary GC B cells for additional diversification.^{111,112} Additional research is required to discern the relevant locations of MBC reactivation and secondary IgE CSR in food allergy.

The immune system also retains mechanisms to regulate IgE responses such as the generation of Treg cells. For example, in humans, spontaneous and AIT-induced desensitization to food allergens is associated with increased Treg-cell frequency.^{113,114} Adoptive transfer of Treg cells into allergic mice suppresses IgE production and anaphylaxis.⁴⁷ Tregs perform a number of inhibitory functions (IL-10 production, dephosphorylation of ATP to adenosine, etc.), though their impact on MBC reactivation is likely indirect via CD4⁺ T-cell suppression.

Over the last decade, T follicular regulatory (Tfr) cells have emerged as key regulators of humoral immunity. Tfr cells share functional characteristics with Treg cells, and localize to T-B cell borders and GCs akin to Tfh cells.¹¹⁵ Their location enables direct suppression of Tfh and GC B-cell activity. Genetic deletion of Tfr cells in mice results in heightened IgE⁺ PC frequency and allergen-specific IgE titers.¹¹⁶ In stark contrast, a different Tfr knockout model has shown an impairment of allergen-specific IgE production, possibly due to loss of Tfr-derived IL-10.¹¹⁷ In humans, IL-10-secreting CD25⁺ FOXP3⁻ Tfh cells, but not Tfr cells, are inversely correlated with serum IgE titers.¹¹⁸ Whether inhibitory or promoting functions are carried out by Tfr cells in secondary responses needs to be elucidated. Tfh cells themselves can also suppress IgE responses through IL-21, which inhibits IgE CSR.¹¹⁹ Congruently, Th2-associated Tfh13 cells secrete less IL-21 relative to Th1-associated Tfh cells.⁵² The inhibitory effects of IL-21, however, are attenuated by high levels of CD40 signaling.¹¹⁹

Lastly, a form of non-T cell-mediated regulation may be carried out by regulatory B cells, which are a heterogeneous group of B cells and certain subsets of PCs.¹²⁰ Regulatory B cells suppress the activity of effector T cells and promote Treg cell differentiation primarily via IL-

10.^{121,122} However, they can secrete other soluble molecules with regulatory roles (TGF- β , IL-35, TSP-1, IDO, etc.) and express surface-bound molecules that enable immunosuppressive cellular interactions (PD-1, FASL, CD73, CD9, CD1d, etc.).¹²³ AIT increases B-regulatory cell frequency, which may further promote Treg cell differentiation and, subsequently, Treg-mediated immunosuppression.¹²³⁻¹²⁶

In summary, few studies have assessed the cellular and molecular requirements for secondary responses to allergens. Clearly defining the requirements for MBC reactivation is necessary for the identification of targets for therapeutic intervention. An insightful approach by which to address this issue would be through computational modelling of cell-cell interactions from single-cell transcriptomic data followed by *in vivo* validation, as has been performed in other diseases.¹²⁷ Moreover, investigating intrinsic regulators of secondary IgE immunity may inspire therapeutic approaches to augment these mechanisms.

Conclusion

Recalling Thucydides: “*They had no fear for themselves for the same man was never attacked twice -never at least fatally*”. Paradoxically, patients with food allergies constantly fear for themselves as re-exposures to allergens unleash allergic reactions. Thus, immune memory is a double-edged sword, beneficial in some instances and harmful in others. That paradox transcends to research directions and goals. Whereas the main goal of furthering our understanding of immune memory in the context of Th1-IgG immunity is to enhance strength and persistent activation, such as is the case in vaccination, the main goal in the context of Th2-IgE immunity to both food and aeroallergens is precisely to weaken or dismantle it.

Despite recent advances, understanding the mechanisms that reactivate memory in food allergy and, therefore, make some food allergies persistent remains vastly incomplete. Specifically, the

cellular and molecular interactions that take place between MBC and T cells, whether naïve or memory T cells, and other cells has not been yet established.

Answering this question is challenging because there are substantial knowledge gaps that leave researchers with critical questions. Where do memory cells reside and become reactivated? How many phenotypes of allergen-specific memory B and T cells exist? Within the same lineage, what is the trajectory of these phenotypes? What is the extent of plasticity among these phenotypes? Can immune responses in food allergy be reprogrammed and, if so, through what mechanism? Is the persistence of food allergy the result of a failure of regulatory mechanisms (Tregs or Tfr)? Answers to these questions will not only illuminate our fundamental immunological understanding of food allergy but also contribute to the identification of targets for therapeutic intervention.

Acknowledgments: We acknowledge Adam Wade-Vallance and Claud Spadafora for critically reviewing the manuscript and for illustrating the figures, respectively. RJS acknowledges the support received by the Severo Ochoa Program (AEI/SEV-2017-0712), FSE/FEDER through the Instituto de Salud Carlos III (ISCIII; CP20/00043), The Nutricia Research Foundation (NRF-2021-13) and New Frontiers in Research Fund (NRF-2019-00083). Research in MJ's laboratory is supported by funds from Food Allergy Canada, Walter and Maria Schroeder Foundation, Michael Zych Family, the Canadian Asthma, Allergy, and Immunology Foundation (CAAIF) and ALK-Abello.

Disclosure: all the authors report no conflicts of interest in relation to this work.

References

1. Tritle LA. *A new history of the Peloponnesian war*. Wiley Online Library; 2010.
2. Bruton K, Koenig JFE, Phelps A, Jordana M. Perturbations to Homeostasis in Experimental Models Revealed Innate Pathways Driving Food Allergy. *Front Immunol*. 2020;11:603272.
3. Florsheim EB, Sullivan ZA, Khoury-Hanold W, Medzhitov R. Food allergy as a biological food quality control system. *Cell*. 2021.
4. Savage J, Sicherer S, Wood R. The Natural History of Food Allergy. *J Allergy Clin Immunol Pract*. 2016;4(2):196-203; quiz 204.

5. Jiménez-Saiz R, Chu DK, Wasserman S, Jordana M. Initiation, Persistence and Exacerbation of Food Allergy. In: Schmidt-Weber CB, ed. *Allergy Prevention and Exacerbation*. Cham: Springer International Publishing; 2017:121-144.
6. Amanna IJ, Carlson NE, Slifka MK. Duration of humoral immunity to common viral and vaccine antigens. *N Engl J Med*. 2007;357(19):1903-1915.
7. Winter O, Dame C, Jundt F, Hiepe F. Pathogenic long-lived plasma cells and their survival niches in autoimmunity, malignancy, and allergy. *J Immunol*. 2012;189(11):5105-5111.
8. Luger EO, Wegmann M, Achatz G, Worm M, Renz H, Radbruch A. Allergy for a lifetime? *Allergol Int*. 2010;59(1):1-8.
9. Jimenez-Saiz R, Bruton K, Koenig JFE, Wasserman S, Jordana M. The IgE memory reservoir in food allergy. *J Allergy Clin Immunol*. 2018;142(5):1441-1443.
10. Beeh KM, Beier J, Buhl R. [Seasonal variations of serum-IgE and potential impact on dose-calculation of omalizumab (rhuMab-E25, anti-IgE)]. *Pneumologie*. 2004;58(8):546-551.
11. Carballeda-Sangiao N, Rodriguez-Mahillo AI, Careche M, Navas A, Moneo I, Gonzalez-Munoz M. Changes over Time in IgE Sensitization to Allergens of the Fish Parasite *Anisakis* spp. *PLoS Negl Trop Dis*. 2016;10(7):e0004864.
12. Kim MS, Straesser MD, Keshavarz B, et al. IgE to galactose-alpha-1,3-galactose wanes over time in patients who avoid tick bites. *J Allergy Clin Immunol Pract*. 2020;8(1):364-367 e362.
13. Jimenez-Saiz R, Chu DK, Mandur TS, et al. Lifelong memory responses perpetuate humoral TH2 immunity and anaphylaxis in food allergy. *J Allergy Clin Immunol*. 2017;140(6):1604-1615 e1605.
14. Jimenez-Saiz R, Ellenbogen Y, Bruton K, et al. Human BCR analysis of single-sorted, putative IgE(+) memory B cells in food allergy. *J Allergy Clin Immunol*. 2019;144(1):336-339 e336.
15. Looney TJ, Lee JY, Roskin KM, et al. Human B-cell isotype switching origins of IgE. *J Allergy Clin Immunol*. 2016;137(2):579-586 e577.
16. He JS, Subramaniam S, Narang V, et al. IgG1 memory B cells keep the memory of IgE responses. *Nat Commun*. 2017;8(1):641.
17. Jimenez-Saiz R, Ellenbogen Y, Koenig JFE, et al. IgG1(+) B-cell immunity predates IgE responses in epicutaneous sensitization to foods. *Allergy*. 2019;74(1):165-175.
18. Turqueti-Neves A, Otte M, Schwartz C, et al. The Extracellular Domains of IgG1 and T Cell-Derived IL-4/IL-13 Are Critical for the Polyclonal Memory IgE Response In Vivo. *PLoS Biol*. 2015;13(11):e1002290.
19. Bruton K, Spill P, Vohra S, et al. Interrupting reactivation of immunologic memory diverts the allergic response and prevents anaphylaxis. *J Allergy Clin Immunol*. 2020.
20. Prussin C, Lee J, Foster B. Eosinophilic gastrointestinal disease and peanut allergy are alternatively associated with IL-5+ and IL-5(-) T(H)2 responses. *J Allergy Clin Immunol*. 2009;124(6):1326-1332 e1326.
21. DeLong JH, Simpson KH, Wambre E, James EA, Robinson D, Kwok WW. Ara h 1-reactive T cells in individuals with peanut allergy. *J Allergy Clin Immunol*. 2011;127(5):1211-1218 e1213.
22. Patil SU, Ogunniyi AO, Calatroni A, et al. Peanut oral immunotherapy transiently expands circulating Ara h 2-specific B cells with a homologous repertoire in unrelated subjects. *J Allergy Clin Immunol*. 2015;136(1):125-134 e112.
23. Hoh RA, Joshi SA, Lee JY, et al. Origins and clonal convergence of gastrointestinal IgE(+) B cells in human peanut allergy. *Sci Immunol*. 2020;5(45):eaay4209.
24. Soletto-Fernandez I, Jimenez-Saiz R, Carrasco YR. Enlightening human B-cell diversity. *Allergy*. 2020;n/a(n/a).

25. Glass DR, Tsai AG, Oliveria JP, et al. An Integrated Multi-omic Single-Cell Atlas of Human B Cell Identity. *Immunity*. 2020;53(1):217-232 e215.
26. Jimenez-Saiz R, Molina E, Lopez-Exposito I. Peanut allergy: allergens and etiology. In: *Peanuts: bioactivities and allergies*. Ivan Lopez-Exposito and Ana Belen Blazquez; 2013:137-152.
27. Hemmings O, Du Toit G, Radulovic S, Lack G, Santos AF. Ara h 2 is the dominant peanut allergen despite similarities with Ara h 6. *J Allergy Clin Immunol*. 2020;146(3):621-630 e625.
28. Hoh RA, Joshi SA, Liu Y, et al. Single B-cell deconvolution of peanut-specific antibody responses in allergic patients. *J Allergy Clin Immunol*. 2016;137(1):157-167.
29. Croote D, Darmanis S, Nadeau KC, Quake SR. High-affinity allergen-specific human antibodies cloned from single IgE B cell transcriptomes. *Science*. 2018;362(6420):1306-1309.
30. Levin M, King JJ, Glanville J, et al. Persistence and evolution of allergen-specific IgE repertoires during subcutaneous specific immunotherapy. *J Allergy Clin Immunol*. 2016;137(5):1535-1544.
31. Ehlers A, den Hartog Jager C, Knulst A, Otten H. Distinction between peanut allergy and tolerance by characterization of B-cell receptor repertoires. *Authorea Preprints*. 2020.
32. Dolton G, Tungatt K, Lloyd A, et al. More tricks with tetramers: a practical guide to staining T cells with peptide-MHC multimers. *Immunology*. 2015;146(1):11-22.
33. Pascal M, Konstantinou GN, Masilamani M, Lieberman J, Sampson HA. In silico prediction of Ara h 2 T cell epitopes in peanut-allergic children. *Clin Exp Allergy*. 2013;43(1):116-127.
34. Novak EJ, Liu AW, Gebe JA, et al. Tetramer-guided epitope mapping: rapid identification and characterization of immunodominant CD4+ T cell epitopes from complex antigens. *J Immunol*. 2001;166(11):6665-6670.
35. Chattopadhyay PK, Yu J, Roederer M. Live-cell assay to detect antigen-specific CD4+ T-cell responses by CD154 expression. *Nat Protoc*. 2006;1(1):1-6.
36. Ruiter B, Smith NP, Monian B, et al. Expansion of the CD4(+) effector T-cell repertoire characterizes peanut-allergic patients with heightened clinical sensitivity. *J Allergy Clin Immunol*. 2020;145(1):270-282.
37. Van Hemelen D, Mahler V, Fischer G, et al. HLA class II peptide tetramers vs allergen-induced proliferation for identification of allergen-specific CD4 T cells. *Allergy*. 2015;70(1):49-58.
38. Begin P, Nadeau KC. Changes in peanut-specific T-cell clonotype with oral immunotherapy. *J Allergy Clin Immunol*. 2015;135(6):1636-1638.
39. Tu AA, Gierahn TM, Monian B, et al. TCR sequencing paired with massively parallel 3' RNA-seq reveals clonotypic T cell signatures. *Nat Immunol*. 2019;20(12):1692-1699.
40. Hintzen RQ, de Jong R, Lens SM, Brouwer M, Baars P, van Lier RA. Regulation of CD27 expression on subsets of mature T-lymphocytes. *J Immunol*. 1993;151(5):2426-2435.
41. Wambre E, Bajzik V, DeLong JH, et al. A phenotypically and functionally distinct human TH2 cell subpopulation is associated with allergic disorders. *Sci Transl Med*. 2017;9(401).
42. Wambre E, James EA, Kwok WW. Characterization of CD4+ T cell subsets in allergy. *Curr Opin Immunol*. 2012;24(6):700-706.
43. Wambre E, DeLong JH, James EA, LaFond RE, Robinson D, Kwok WW. Differentiation stage determines pathologic and protective allergen-specific CD4+ T-cell outcomes during specific immunotherapy. *J Allergy Clin Immunol*. 2012;129(2):544-551, 551 e541-547.
44. Chiang D, Chen X, Jones SM, et al. Single-cell profiling of peanut-responsive T cells in patients with peanut allergy reveals heterogeneous effector TH2 subsets. *J Allergy Clin Immunol*. 2018;141(6):2107-2120.

45. Blom LH, Martel BC, Larsen LF, et al. The immunoglobulin superfamily member CD200R identifies cells involved in type 2 immune responses. *Allergy*. 2017;72(7):1081-1090.
46. Bangert C, Rindler K, Krausgruber T, et al. Persistence of mature dendritic cells, TH2A, and Tc2 cells characterize clinically resolved atopic dermatitis under IL-4Ralpha blockade. *Sci Immunol*. 2021;6(55):eabe2749.
47. Noval Rivas M, Burton OT, Wise P, et al. Regulatory T cell reprogramming toward a Th2-cell-like lineage impairs oral tolerance and promotes food allergy. *Immunity*. 2015;42(3):512-523.
48. Cosmi L, Maggi L, Santarlasci V, et al. Identification of a novel subset of human circulating memory CD4(+) T cells that produce both IL-17A and IL-4. *J Allergy Clin Immunol*. 2010;125(1):222-230 e221-224.
49. Spergel J, Aceves SS. Allergic components of eosinophilic esophagitis. *J Allergy Clin Immunol*. 2018;142(1):1-8.
50. Kobayashi T, Iijima K, Dent AL, Kita H. Follicular helper T cells mediate IgE antibody response to airborne allergens. *J Allergy Clin Immunol*. 2017;139(1):300-313 e307.
51. Meli AP, Fontes G, Leung Soo C, King IL. T Follicular Helper Cell-Derived IL-4 Is Required for IgE Production during Intestinal Helminth Infection. *J Immunol*. 2017;199(1):244-252.
52. Gowthaman U, Chen JS, Zhang B, et al. Identification of a T follicular helper cell subset that drives anaphylactic IgE. *Science*. 2019;365(6456):eaaw6433.
53. Jimenez-Saiz R, Bruton K, Jordana M. Follicular T cells: From stability to failure. *Allergy*. 2020;75(4):1006-1007.
54. Chu DK, Mohammed-Ali Z, Jimenez-Saiz R, et al. T helper cell IL-4 drives intestinal Th2 priming to oral peanut antigen, under the control of OX40L and independent of innate-like lymphocytes. *Mucosal immunology*. 2014;7(6):1395-1404.
55. Chu DK, Jimenez-Saiz R, Verschoor CP, et al. Indigenous enteric eosinophils control DCs to initiate a primary Th2 immune response in vivo. *J Exp Med*. 2014;211(8):1657-1672.
56. Ellenbogen Y, Jimenez-Saiz R, Spill P, Chu DK, Waserman S, Jordana M. The Initiation of Th2 Immunity Towards Food Allergens. *Int J Mol Sci*. 2018;19(5).
57. Ruiter B, Shreffler WG. Innate immunostimulatory properties of allergens and their relevance to food allergy. *Seminars in immunopathology*. 2012.
58. McKinstry KK, Strutt TM, Bautista B, et al. Effector CD4 T-cell transition to memory requires late cognate interactions that induce autocrine IL-2. *Nat Commun*. 2014;5:5377.
59. Surh CD, Sprent J. Homeostasis of naive and memory T cells. *Immunity*. 2008;29(6):848-862.
60. Fazilleau N, Eisenbraun MD, Malherbe L, et al. Lymphoid reservoirs of antigen-specific memory T helper cells. *Nat Immunol*. 2007;8(7):753-761.
61. Gasper DJ, Tejera MM, Suresh M. CD4 T-cell memory generation and maintenance. *Crit Rev Immunol*. 2014;34(2):121-146.
62. Gramaglia I, Jember A, Pippig SD, Weinberg AD, Killeen N, Croft M. The OX40 costimulatory receptor determines the development of CD4 memory by regulating primary clonal expansion. *J Immunol*. 2000;165(6):3043-3050.
63. Schiott A, Lindstedt M, Johansson-Lindbom B, Roggen E, Borrebaeck CA. CD27- CD4+ memory T cells define a differentiated memory population at both the functional and transcriptional levels. *Immunology*. 2004;113(3):363-370.
64. Crotty S. T Follicular Helper Cell Biology: A Decade of Discovery and Diseases. *Immunity*. 2019;50(5):1132-1148.
65. Zhang B, Liu E, Gertie JA, et al. Divergent T follicular helper cell requirement for IgA and IgE production to peanut during allergic sensitization. *Sci Immunol*. 2020;5(47).
66. Noble A, Zhao J. Follicular helper T cells are responsible for IgE responses to Der p 1 following house dust mite sensitization in mice. *Clin Exp Allergy*. 2016;46(8):1075-1082.

67. Dolence JJ, Kobayashi T, Iijima K, et al. Airway exposure initiates peanut allergy by involving the IL-1 pathway and T follicular helper cells in mice. *Journal of Allergy and Clinical Immunology*.
68. Lu KT, Kanno Y, Cannons JL, et al. Functional and epigenetic studies reveal multistep differentiation and plasticity of in vitro-generated and in vivo-derived follicular T helper cells. *Immunity*. 2011;35(4):622-632.
69. Vogelzang A, McGuire HM, Yu D, Sprent J, Mackay CR, King C. A fundamental role for interleukin-21 in the generation of T follicular helper cells. *Immunity*. 2008;29(1):127-137.
70. Weber JP, Fuhrmann F, Feist RK, et al. ICOS maintains the T follicular helper cell phenotype by down-regulating Kruppel-like factor 2. *J Exp Med*. 2015;212(2):217-233.
71. Mahajan S, Cervera A, MacLeod M, et al. The role of ICOS in the development of CD4 T cell help and the reactivation of memory T cells. *European journal of immunology*. 2007;37(7):1796-1808.
72. Merckenschlager J, Finkin S, Ramos V, et al. Dynamic regulation of TFH selection during the germinal centre reaction. *Nature*. 2021.
73. Kunzli M, Schreiner D, Pereboom TC, et al. Long-lived T follicular helper cells retain plasticity and help sustain humoral immunity. *Sci Immunol*. 2020;5(45).
74. Alterauge D, Bagnoli JW, Dahlstrom F, et al. Continued Bcl6 Expression Prevents the Transdifferentiation of Established Tfh Cells into Th1 Cells during Acute Viral Infection. *Cell Rep*. 2020;33(1):108232.
75. Alvarez D, Arkinson JL, Sun J, Fattouh R, Walker T, Jordana M. Th2 differentiation in distinct lymph nodes influences the site of mucosal Th2 immune-inflammatory responses. *J Immunol*. 2007;179(5):3287-3296.
76. Ugur M, Schulz O, Menon MB, Krueger A, Pabst O. Resident CD4+ T cells accumulate in lymphoid organs after prolonged antigen exposure. *Nat Commun*. 2014;5:4821.
77. Islam SA, Luster AD. T cell homing to epithelial barriers in allergic disease. *Nat Med*. 2012;18(5):705-715.
78. Masopust D, Choo D, Vezys V, et al. Dynamic T cell migration program provides resident memory within intestinal epithelium. *J Exp Med*. 2010;207(3):553-564.
79. Hondowicz BD, An D, Schenkel JM, et al. Interleukin-2-Dependent Allergen-Specific Tissue-Resident Memory Cells Drive Asthma. *Immunity*. 2016;44(1):155-166.
80. Bosnjak B, Kazemi S, Altenburger LM, Mokrovic G, Epstein MM. Th2-TRMs Maintain Life-Long Allergic Memory in Experimental Asthma in Mice. *Front Immunol*. 2019;10:840.
81. Steinbach K, Vincenti I, Merkler D. Resident-Memory T Cells in Tissue-Restricted Immune Responses: For Better or Worse? *Front Immunol*. 2018;9:2827.
82. Carrasco YR, Batista FD. B cells acquire particulate antigen in a macrophage-rich area at the boundary between the follicle and the subcapsular sinus of the lymph node. *Immunity*. 2007;27(1):160-171.
83. Cyster JG, Allen CDC. B Cell Responses: Cell Interaction Dynamics and Decisions. *Cell*. 2019;177(3):524-540.
84. Yao Y, Chen CL, Yu D, Liu Z. Roles of follicular helper and regulatory T cells in allergic diseases and allergen immunotherapy. *Allergy*. 2021;76(2):456-470.
85. Taylor JJ, Pape KA, Jenkins MK. A germinal center-independent pathway generates unswitched memory B cells early in the primary response. *J Exp Med*. 2012;209(3):597-606.
86. Roco JA, Mesin L, Binder SC, et al. Class-Switch Recombination Occurs Infrequently in Germinal Centers. *Immunity*. 2019;51(2):337-350 e337.
87. Allie SR, Bradley JE, Mudunuru U, et al. The establishment of resident memory B cells in the lung requires local antigen encounter. *Nat Immunol*. 2019;20(1):97-108.
88. Yang Z, Robinson MJ, Allen CD. Regulatory constraints in the generation and differentiation of IgE-expressing B cells. *Curr Opin Immunol*. 2014;28:64-70.

89. Finney J, Yeh C-H, Kelsoe G, Kuraoka M. Germinal center responses to complex antigens. *Immunological Reviews*. 2018;284(1):42-50.
90. Zuccarino-Catania GV, Sadanand S, Weisel FJ, et al. CD80 and PD-L2 define functionally distinct memory B cell subsets that are independent of antibody isotype. *Nat Immunol*. 2014;15(7):631-637.
91. Di Niro R, Lee SJ, Vander Heiden JA, et al. Salmonella Infection Drives Promiscuous B Cell Activation Followed by Extrafollicular Affinity Maturation. *Immunity*. 2015;43(1):120-131.
92. Yang Z, Robinson MJ, Chen X, et al. Regulation of B cell fate by chronic activity of the IgE B cell receptor. *Elife*. 2016;5.
93. Haniuda K, Fukao S, Kodama T, Hasegawa H, Kitamura D. Autonomous membrane IgE signaling prevents IgE-memory formation. *Nat Immunol*. 2016;17(9):1109-1117.
94. Laffleur B, Debeauvais O, Dalloul Z, Cogne M. B Cell Intrinsic Mechanisms Constraining IgE Memory. *Front Immunol*. 2017;8(1277):1277.
95. Blazquez AB, Berin MC. Gastrointestinal dendritic cells promote Th2 skewing via OX40L. *J Immunol*. 2008;180(7):4441-4450.
96. Adler LN, Jiang W, Bhamidipati K, et al. The Other Function: Class II-Restricted Antigen Presentation by B Cells. *Front Immunol*. 2017;8:319.
97. Moutsoglou DM, Dreskin SC. B cells establish, but do not maintain, long-lived murine anti-peanut IgE(a). *Clin Exp Allergy*. 2016;46(4):640-653.
98. Harris DP, Goodrich S, Mohrs K, Mohrs M, Lund FE. Cutting edge: the development of IL-4-producing B cells (B effector 2 cells) is controlled by IL-4, IL-4 receptor alpha, and Th2 cells. *J Immunol*. 2005;175(11):7103-7107.
99. Katona IM, Urban JF, Jr., Kang SS, Paul WE, Finkelman FD. IL-4 requirements for the generation of secondary in vivo IgE responses. *J Immunol*. 1991;146(12):4215-4221.
100. Finkelman FD, Katona IM, Urban JF, Jr., et al. IL-4 is required to generate and sustain in vivo IgE responses. *J Immunol*. 1988;141(7):2335-2341.
101. King IL, Mohrs M. IL-4-producing CD4+ T cells in reactive lymph nodes during helminth infection are T follicular helper cells. *J Exp Med*. 2009;206(5):1001-1007.
102. Liang HE, Reinhardt RL, Bando JK, Sullivan BM, Ho IC, Locksley RM. Divergent expression patterns of IL-4 and IL-13 define unique functions in allergic immunity. *Nat Immunol*. 2011;13(1):58-66.
103. McHeyzer-Williams M, Okitsu S, Wang N, McHeyzer-Williams L. Molecular programming of B cell memory. *Nat Rev Immunol*. 2011;12(1):24-34.
104. Etzioni A, Ochs HD. The hyper IgM syndrome--an evolving story. *Pediatr Res*. 2004;56(4):519-525.
105. Dong C, Juedes AE, Temann UA, et al. ICOS co-stimulatory receptor is essential for T-cell activation and function. *Nature*. 2001;409(6816):97-101.
106. Latham LE, Wikenheiser DJ, Stumhofer JS. ICOS signaling promotes a secondary humoral response after re-challenge with *Plasmodium chabaudi chabaudi* AS. *PLoS pathogens*. 2020;16(4):e1008527.
107. Salek-Ardakani S, Song J, Halteman BS, et al. OX40 (CD134) controls memory T helper 2 cells that drive lung inflammation. *J Exp Med*. 2003;198(2):315-324.
108. Takatsuka S, Yamada H, Haniuda K, et al. IL-9 receptor signaling in memory B cells regulates humoral recall responses. *Nature Immunology*. 2018;19(9):1025-1034.
109. Blazquez AB, Knight AK, Getachew H, et al. A functional role for CCR6 on proallergic T cells in the gastrointestinal tract. *Gastroenterology*. 2010;138(1):275-284 e271-274.
110. Aguilera-Lizarraga J, Florens MV, Viola MF, et al. Local immune response to food antigens drives meal-induced abdominal pain. *Nature*. 2021;590(7844):151-156.
111. Moran I, Nguyen A, Khoo WH, et al. Memory B cells are reactivated in subcapsular proliferative foci of lymph nodes. *Nat Commun*. 2018;9(1):3372.

112. Palm AE, Henry C. Remembrance of Things Past: Long-Term B Cell Memory After Infection and Vaccination. *Front Immunol*. 2019;10(1787):1787.
113. Syed A, Garcia MA, Lyu SC, et al. Peanut oral immunotherapy results in increased antigen-induced regulatory T-cell function and hypomethylation of forkhead box protein 3 (FOXP3). *J Allergy Clin Immunol*. 2014;133(2):500-510.
114. Karlsson MR, Rugtveit J, Brandtzaeg P. Allergen-responsive CD4+CD25+ regulatory T cells in children who have outgrown cow's milk allergy. *J Exp Med*. 2004;199(12):1679-1688.
115. Sayin I, Radtke AJ, Vella LA, et al. Spatial distribution and function of T follicular regulatory cells in human lymph nodes. *J Exp Med*. 2018;215(6):1531-1542.
116. Clement RL, Daccache J, Mohammed MT, et al. Follicular regulatory T cells control humoral and allergic immunity by restraining early B cell responses. *Nat Immunol*. 2019;20(10):1360-1371.
117. Xie MM, Chen Q, Liu H, et al. T follicular regulatory cells and IL-10 promote food antigen-specific IgE. *J Clin Invest*. 2020;130(7):3820-3832.
118. Canete PF, Sweet RA, Gonzalez-Figueroa P, et al. Regulatory roles of IL-10-producing human follicular T cells. *J Exp Med*. 2019;216(8):1843-1856.
119. Yang Z, Wu CM, Targ S, Allen CDC. IL-21 is a broad negative regulator of IgE class switch recombination in mouse and human B cells. *J Exp Med*. 2020;217(5).
120. Rosser EC, Mauri C. Regulatory B cells: origin, phenotype, and function. *Immunity*. 2015;42(4):607-612.
121. Ma S, Satitsuksanoa P, Jansen K, Cevhertas L, van de Veen W, Akdis M. B regulatory cells in allergy. *Immunol Rev*. 2020;n/a(n/a).
122. Jansen K, Cevhertas L, Ma S, Satitsuksanoa P, Akdis M, van de Veen W. Regulatory B cells, A to Z. *Allergy*. 2021;n/a(n/a).
123. Jimenez-Saiz R, Patil SU. The Multifaceted B Cell Response in Allergen Immunotherapy. *Curr Allergy Asthma Rep*. 2018;18(12):66.
124. Boonpiyathad T, Meyer N, Moniuszko M, et al. High-dose bee venom exposure induces similar tolerogenic B-cell responses in allergic patients and healthy beekeepers. *Allergy*. 2017;72(3):407-415.
125. Boonpiyathad T, Tantilipikorn P, Ruxrungtham K, et al. IL-10-producing innate lymphoid cells increased in patients with house dust mite allergic rhinitis following immunotherapy. *J Allergy Clin Immunol*. 2020.
126. Zissler UM, Jakwerth CA, Guerth FM, et al. Early IL-10 producing B-cells and coinciding Th/Tr17 shifts during three year grass-pollen AIT. *EBioMedicine*. 2018;36:475-488.
127. Armingol E, Officer A, Harismendy O, Lewis NE. Deciphering cell-cell interactions and communication from gene expression. *Nat Rev Genet*. 2021;22(2):71-88.

Abbreviations: plasma cells, PCs; memory B cells, MBCs; peripheral blood mononuclear cells, PBMCs; class-switch recombination, CSR; B-cell receptors, BCRs; secondary lymphoid organs, SLO; peanut, PN; allergen immunotherapy, AIT; dendritic cells, DCs; T-cell receptor, TCR; T regulatory, Treg; T follicular helper, Tfh; T follicular regulatory, Tfr; T-resident memory, T_{rm};

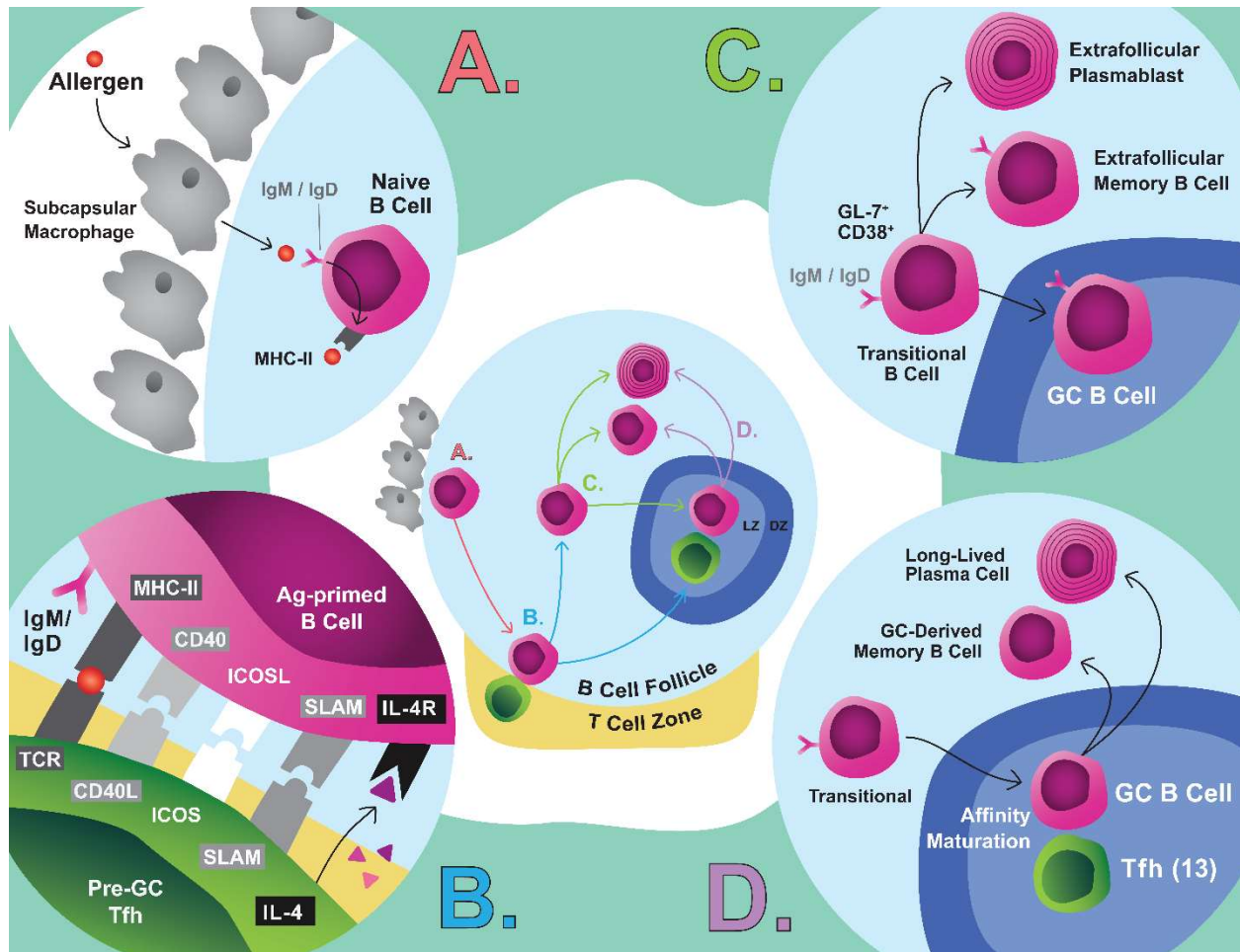


Figure 1. Simplified pathway of memory T-cell differentiation. T-cell fate is decided in part by interactions with DCs. Th2 cells expand and contract, the remaining of which are retained as memory. Tfh maturation continues when they interact with B cells at the T/B border and when selected over the course of a GC reaction. Some of these cells persist as memory Tfh cells.

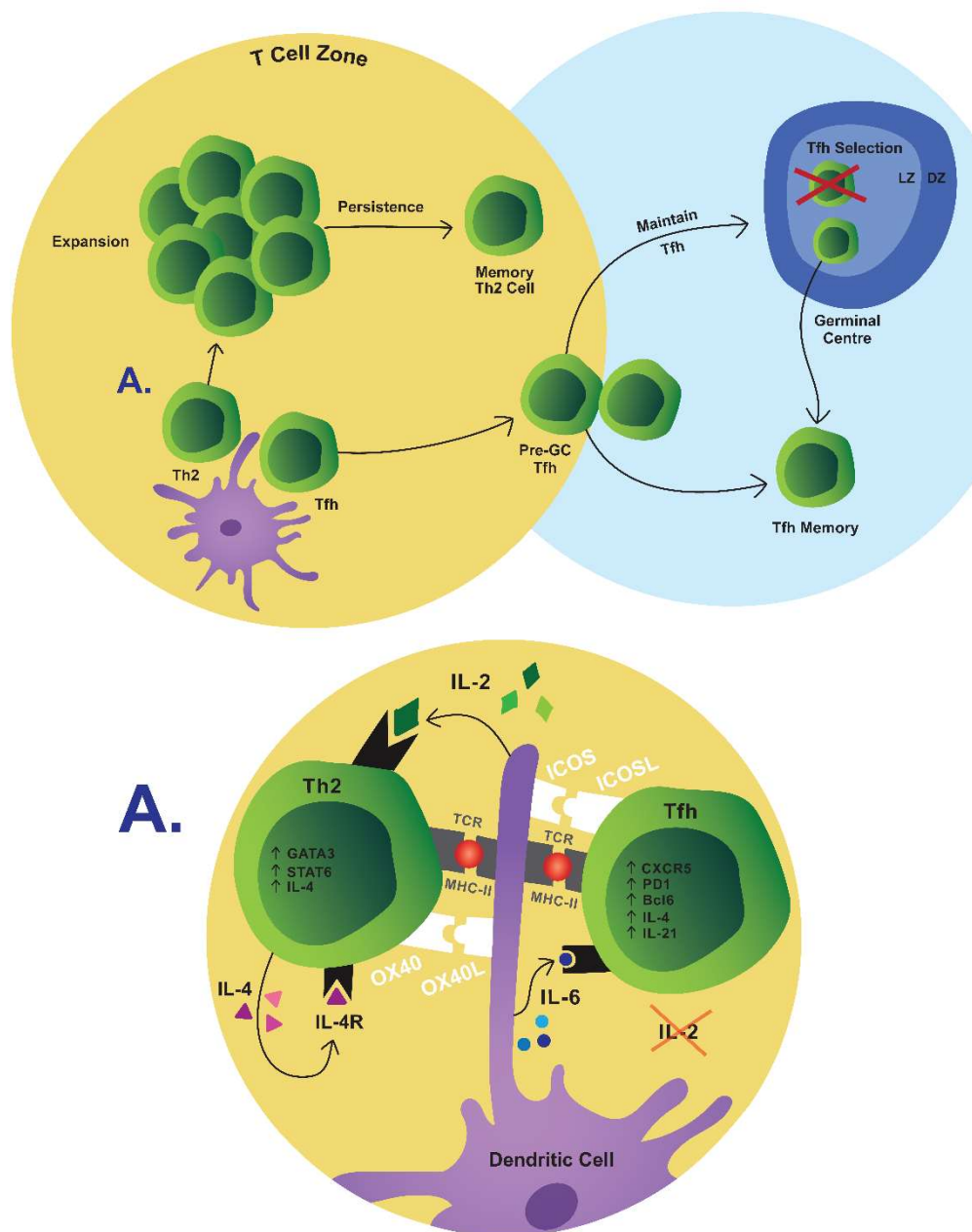


Figure 2. Simplified pathway of MBC differentiation. A) Naïve B cells capture antigen from subcapsular macrophages, which initiates differentiation. B) These cells are activated by pre-GC Tfh cells. C) These cells enter an intermediate phase where extrafollicular fate decisions are made, or the cells migrate to the GC. D) GC B cells affinity mature and are selected through interactions with Tfh cells to leave the GC as a MBC or LLPC.

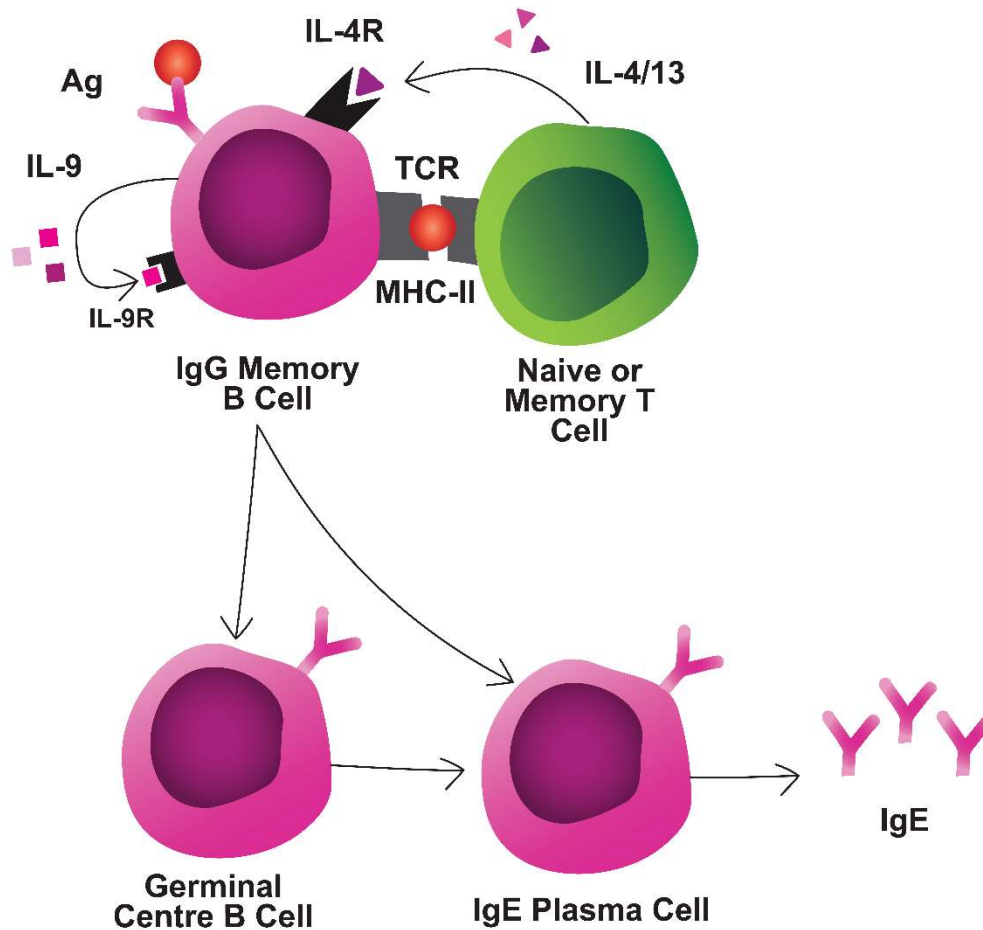


Figure 3. Interactions during memory reactivation. MBCs interact with naïve or memory T cells through TCR/MHC and IL-4/IL-4R interactions, at a minimum. MBCs secrete autocrine/paracrine IL-9 which is required for MBC reactivation. MBCs can differentiate rapidly into IgE-secreting PCs, or first enter GCs for additional diversification prior to IgE PC differentiation.