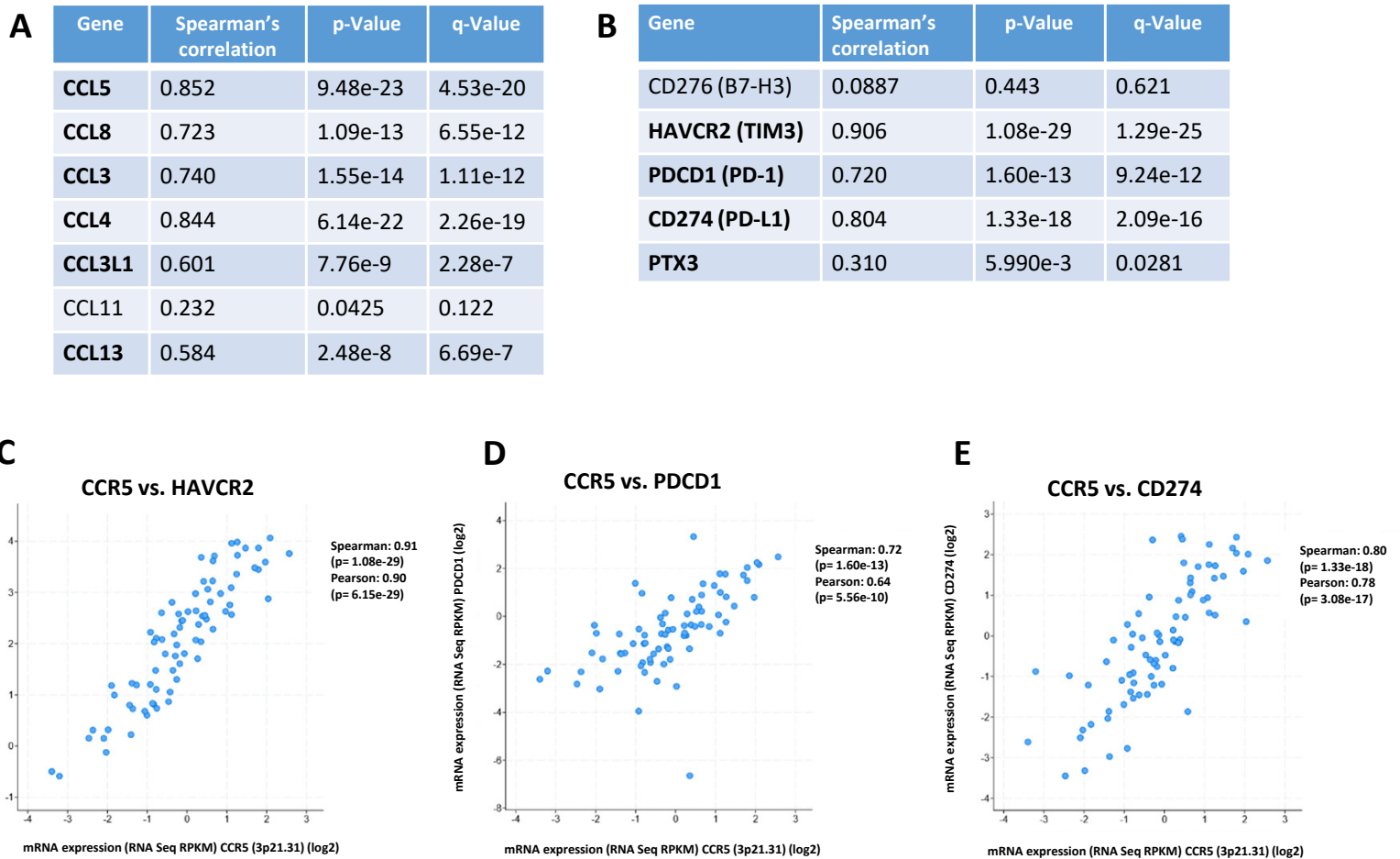


Supplemental Figure 1. Immunohistochemistry: Human leukocytes were not detected in SW480 xenografts. Heterotopic SW480 tumors were harvested on day 50 and analyzed for expression of human CD3, CD4, CD8, and CD11b (upper 4 panels). Human tonsil tissue was included as a positive control and stained robustly with all four antibodies (lower 4 panels).

Supplemental Figure 2

Antibody	Clone	Antigen Retrieval	Primary Incubation	Primary dilution
CD3 - Cat# 5278422001, Roche	Rb Monoclonal, Clone (2GV6)	CC1, 64 Minutes @ 95C	16 Minutes @ 37C	Prediluted
CD4 - Cat # 5552737001, Roche	Rb Monoclonal, Clone, SP35	CC1, 64 Minutes @ 95C	36 Minutes @ 36C	Prediluted
CD8 - Cat # 5937248001, Roche	Rb Monoclonal, Clone, Sp57	CC1, 64 Minutes @ 95C	32 Minutes @ 36C	Prediluted
CD11b - Cat# 14-0196-80, eBioscience	Ms Monoclonal, Clone, C67F154	CC1, 40 Minutes @ 95C	44 Minutes @ 37C	1:100

Supplemental Figure 2. Antibodies used for immunohistochemistry.



Supplemental Figure 3. Gene expression correlation analysis for Colorectal Adenocarcinoma (COAD) MSI samples (dataset TCGA, Nature 2012) using cBioPortal for Cancer Genomics platform. Of the 82 samples assigned as microsatellite instable, MSI (MSI-L and MSI-H merged), 77 samples have available RNAseq data. A) The gene names of the CCR5 ligands and B) immune checkpoint genes whose expressions are significantly correlated with CCR5 expression (Spearman's correlation with Benjamini-Hochberg FDR correction; q-value<0.05) are depicted in bold. PTX3 shows a correlation with marginal significance that would not remain significant after correcting for multiple comparisons (assessing expression correlations for multiple gene pairs at the same time). C) Pairwise expression correlations are depicted between CCR5 and the immune checkpoint genes HAVCR2, PD-1, and PD-L1, respectively, in MSI samples.