

Communication

Antimicrobial activity of the peptide C14R against *ab initio* growing and preformed Biofilms of *Candida albicans*, *C. auris* and *C. parapsilosis*

Jan-Christoph Walter^{1,†}, Ann-Kathrin Kissmann^{1,†}, Daniel Gruber¹, Daniel Alpízar-Pedraza^{1,2}, Ernesto M. Martell-Huguet¹, Nico Preising³, Armando Rodriguez-Alfonso^{3,4}, Ludger Ständker³, Christoph Kleber⁵, Wolfgang Knoll⁵, Steffen Stenger⁶, Carolina Firacative⁷ and Frank Rosenau^{1,*}

¹ Institute of Pharmaceutical Biotechnology, Ulm University, 89081 Ulm, Germany

² Center for Pharmaceutical Research and Development (CIDEM), 26th Avenue, No. 1605, Nuevo Vedado, La Habana 10400, Cuba; dalpizar@gmail.com

³ Core Facility for Functional Peptidomics (CFP), Faculty of Medicine, Ulm University, 89081 Ulm, Germany

⁴ Core Unit of Mass Spectrometry and Proteomics, Faculty of Medicine, Ulm University, 89081 Ulm, Germany

⁵ Danube Private University, Faculty of Medicine and Dentistry, Steiner Landstraße 124, 3500 Krems an der Donau, Austria

⁶ Institute for Medical Microbiology and Hygiene, University Hospital Ulm, 89081 Ulm, Germany

⁷ Studies in Translational Microbiology and Emerging Diseases (MICROS) Research Group, School of Medicine and Health Sciences, Universidad de Rosario, Bogota 111221, Colombia

* Correspondence: frank.rosenau@uni-ulm.de

† These authors contributed equally to this work.

Supplementary Information

Citation: To be added by editorial staff during production.

Academic Editor: Firstname Last-name

Received: date

Revised: date

Accepted: date

Published: date



Copyright: © 2024 by the authors.

Submitted for possible open access publication under the terms and conditions of the Creative Commons Attribution (CC BY) license (<https://creativecommons.org/licenses/by/4.0/>).

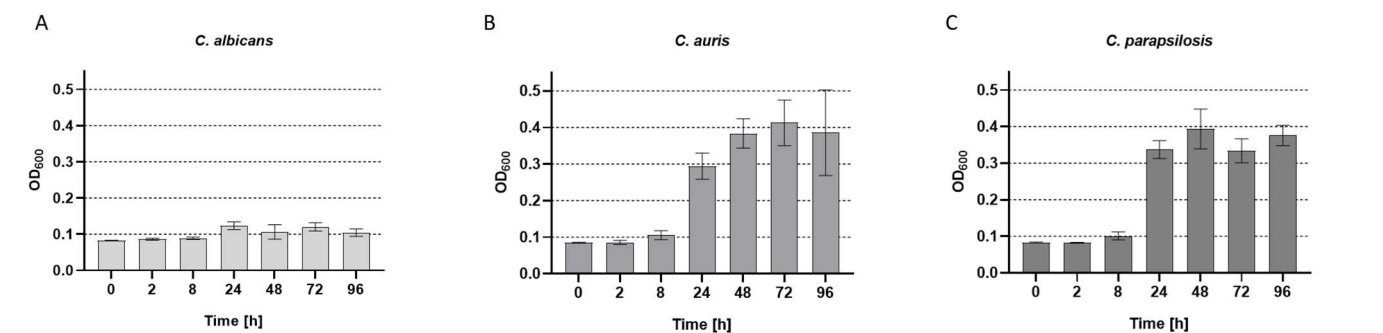


Figure S1. Kinetic of planktonic phase, measured OD₆₀₀ values of the time points 0, 2, 8, 24, 48, 72 and 96 hours are shown of (A) *C. albicans*, (B) *C. auris* and (C) *C. parapsilosis*. All experiments were conducted in triplicate with error bars representing standard deviations.

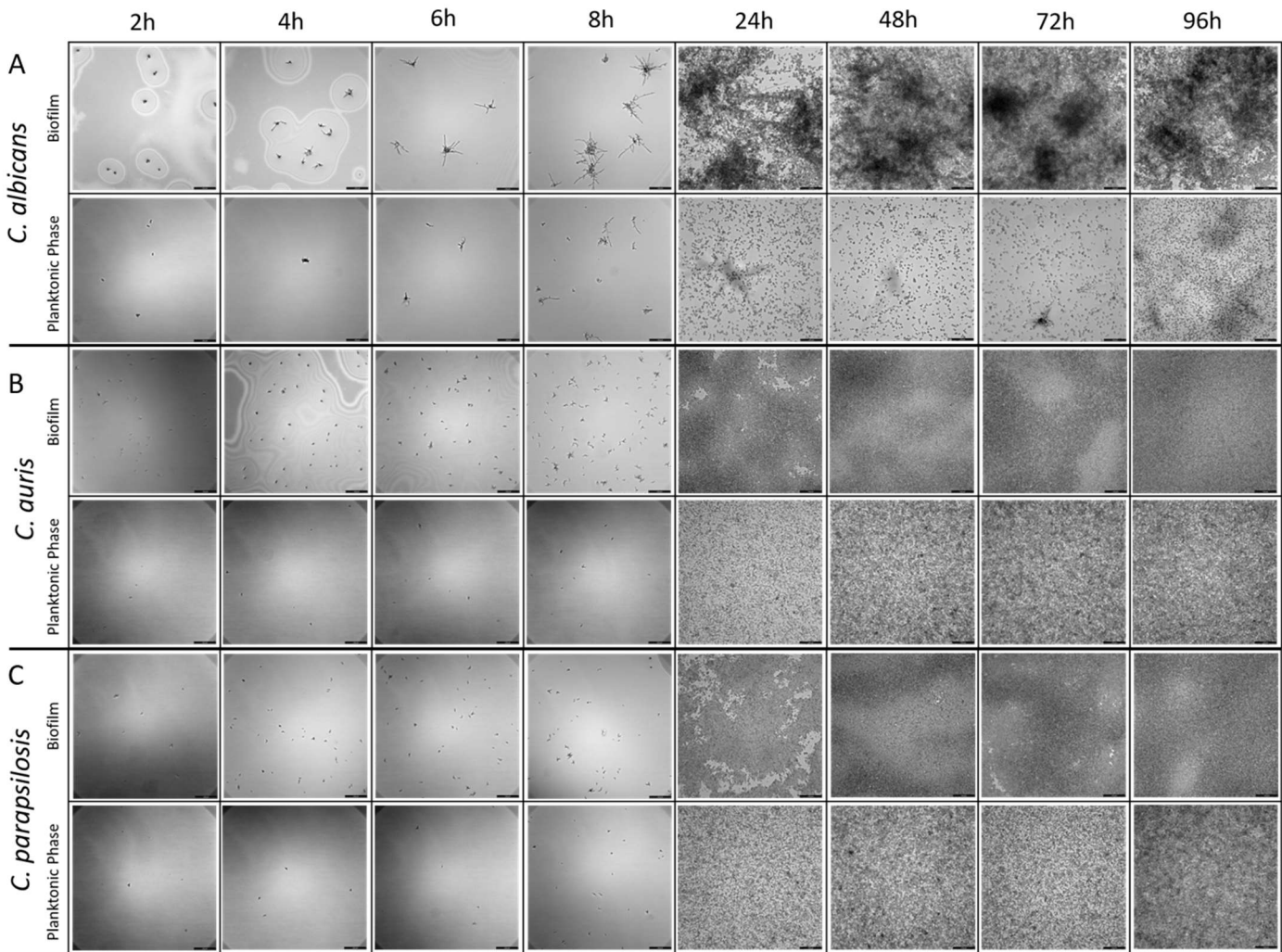


Figure S2. Light microscopy of the planktonic phase as well as the biofilms of (A) *C. albicans*, (B) *C. auris* and (C) *C. parapsilosis* at the time points 2, 4, 6, 8, 24, 48, 72 and 96 hours and at 400× magnification.

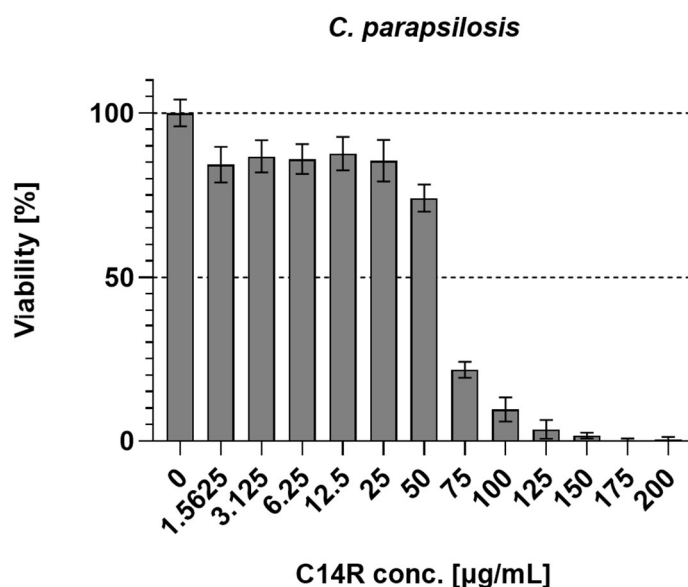


Figure S3. Viability assay by incubation of *C. parapsilosis* cells with the antimicrobial peptide C14R simultaneously to inoculation. Graph shows the number of viable cells in percent compared an untreated control after a total incubation time of 24 hours. Viable cells were analyzed using the resazurin assay. All experiments were conducted in triplicate with error bars representing standard deviations.

44

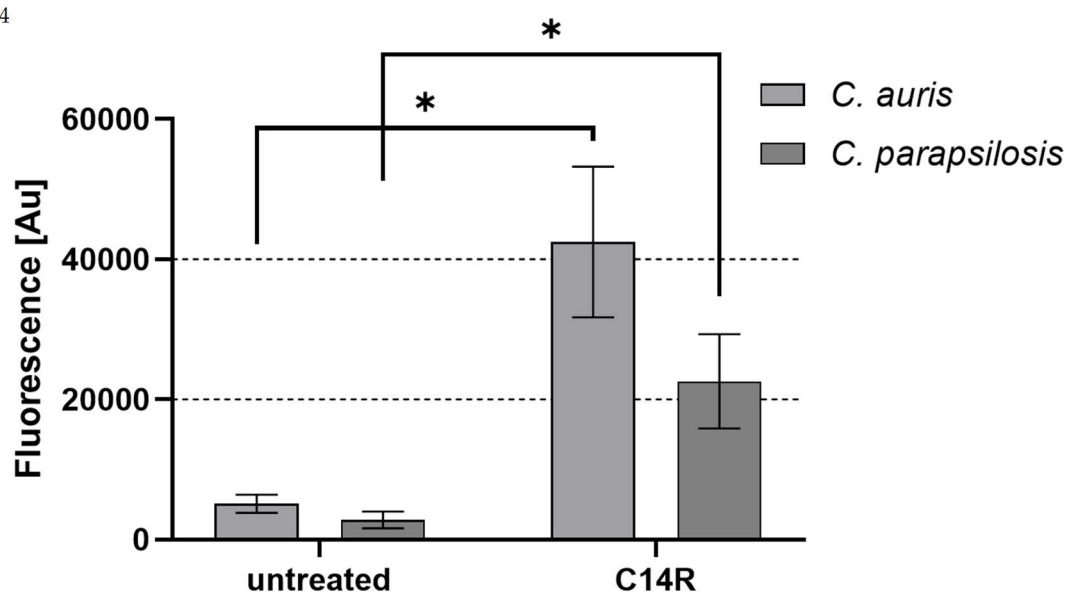


Figure S4. Permeabilization assay of cells of *C. auris* and *C. parapsilosis*. Graph shows the fluorescence of *Candida* cells after the uptake of the fluorescent dye Fluorescein isothiocyanate (FITC). Fluorescence was sufficiently higher after an incubation time of 2 h with C14R compared to an untreated control. All experiments were conducted in triplicate with error bars representing standard deviations. p values < 0.05 were considered significant. * p denotes < 0.05 .

43