

Review

Not peer-reviewed version

Chirality Effect on Physical and Biological Properties of Peptide-Based Hydrogels

[Lucia De Rosa](#) , [Luca Domenico D'Andrea](#) ^{*} , [Alessandra Romanelli](#) ^{*}

Posted Date: 27 March 2026

doi: 10.20944/preprints202603.2201.v1

Keywords: peptide; self-assembling; hydrogel; chirality; supramolecular; D-amino acid



Preprints.org is a free multidisciplinary platform providing preprint service that is dedicated to making early versions of research outputs permanently available and citable. Preprints posted at Preprints.org appear in Web of Science, Crossref, Google Scholar, Scilit, Europe PMC.

Copyright: This open access article is published under a [Creative Commons CC BY 4.0 license](#), which permit the free download, distribution, and reuse, provided that the author and preprint are cited in any reuse.

Disclaimer/Publisher's Note: The statements, opinions, and data contained in all publications are solely those of the individual author(s) and contributor(s) and not of MDPI and/or the editor(s). MDPI and/or the editor(s) disclaim responsibility for any injury to people or property resulting from any ideas, methods, instructions, or products referred to in the content.

Review

Chirality Effect on Physical and Biological Properties of Peptide-Based Hydrogels

Lucia De Rosa ¹, Luca Domenico D'Andrea ^{2,*} and Alessandra Romanelli ^{3,*}

¹ Istituto di Biostrutture e Bioimmagini, CNR, Via P. Castellino 111, 80131 Napoli, Italy

² Istituto di Scienze e Tecnologie Chimiche "G. Natta", CNR, Via M. Bianco 9, 20131 Milano (Italy)

³ Dipartimento di Scienze Farmaceutiche, Università degli Studi di Milano, via Venezian 21, 20133 Milano (Italy)

* Correspondence: lucadomenico.dandrea@cnr.it (L.D.D.); alessandra.romanelli@unimi.it (A.R.)

Abstract

The self-assembly of peptide-based building blocks into ordered structures is widely exploited for the development of novel biomaterials, including hydrogels. In this review, we analyze the effect of chirality on the ability of peptides to form hydrogels. We describe systems composed of peptides of opposite chirality i.e. peptides composed of all L- or D-amino acids and peptides composed of amino acids with alternate chirality, i.e. one L- and D-amino acid or one block containing all L-amino acid followed by one block composed of all D-amino acids. Finally, we illustrate systems composed of mixtures of L- and D-peptides. The structural features of these compounds are discussed. We further compare the mechanical properties of hydrogels formed by homochiral and heterochiral peptides. Finally, we discuss the potential biological applications of these systems, focusing on the differences between hydrogels formed from peptides of opposite chirality or mixed chirality.

Keywords: peptide; self-assembling; hydrogel; chirality; supramolecular; D-amino acid

1. Introduction

Peptides are versatile building blocks for the development of hydrogels; they are biocompatible, easy to produce, and show properties such as structure and biological activity that are strictly dependent on the sequence [1]. Hydrogel formation occurs when peptides self-assemble into supramolecular structures stabilized by interactions between the backbone and the side chains of amino acids able to interact with water. In many cases, these supramolecular structures adopt morphologies such as fibers or tubes, forming a network. The length of these elongated structures, as well as the degree of interconnection, correlates to the mechanical properties of the hydrogels.

The design of hydrogel-forming peptides is a challenging task; computational tools have been developed for this purpose. Recently, a combination of machine learning tools and experimental work has enabled the determination of a score function for the discovery of hydrogelator tetrapeptides [2].

Sequences forming hydrogels comprise hydrophobic or aromatic residues and functional groups that promote self-assembly via π - π interactions, as well as polar or hydrogen bonding residues that generate amphiphilic structures promoting interactions with water. For example, the combination of a strong self-assembling motif, such as FF or YF, with a lysine residue produces effective gelators: KFF or KYF form hydrogels, unlike PFF [3] KFF and KYF assemble into fibers; the polar residue allows the interaction of the fiber with water. A further example of hydrogel-forming peptides is represented by sequences containing aliphatic residues and terminating with a polar residue, such as Ac-LIVAGD [4]. This peptide assembles into amyloid type fibers, formed through a stepwise process in which the peptide conformation changes from random, to α -helical, and then to a cross β -structure [5]. Gelation also occurs with peptides composed of alternating hydrophobic and hydrophilic residues, such as EAK16 or RADA16, which are stabilized by electrostatic interactions [6].

In this review, we describe selected examples of peptide-based hydrogels: we analyze the effect of chirality on the secondary or three-dimensional structure of peptides, the morphology of supramolecular structures, and the mechanical properties of hydrogels. Moreover, we describe examples in which the chirality of peptide hydrogelators determines specific biological effects.

2. Chirality in Peptide-Based Hydrogels

Peptides are composed, with few exceptions, of chiral monomeric units. In amino acids, the α -carbon bears four substituents, and when all four are different, two stereochemical configurations, denoted as L or D, are possible. L- and D-amino acids are enantiomers, i.e., molecules whose mirror images are not superimposable (Figure 1). Natural, ribosomally synthesized proteins are composed exclusively of L-amino acids; D-amino acids are occasionally found in non-ribosomal natural peptides as a result of enzymatic processes.

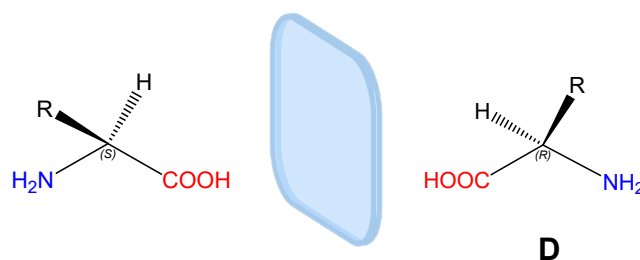


Figure 1. Chemical structure of a generic chiral amino acid ($R \neq H$), with an indication of the L or D configuration.

Of course, synthetic chemists can prepare peptides containing both L- and D-amino acids, and in recent years, mirror-image proteins (proteins composed exclusively of D-amino acids) have been synthesized using native chemical ligation and related methodologies.[7,8]

Amino acid chirality can be indicated using the L and D notation, which refers to the relative configuration of the stereogenic center with respect to L- and D-glyceraldehyde, or by the Cahn-Ingold-Prelog (R/S) system, although the latter is less commonly used for amino acids. In the R/S system, natural L-amino acids almost always correspond to the S configuration, with the exception of L-cysteine, which is assigned the R configuration due to the higher priority of the sulfur atom relative to the carboxyl group (Figure 1).

A straightforward way to recognize the handedness of an amino acid (or a residue within a biomolecule) is the “corn-crib” rule, originally described by J. Richardson (Figure 2) [9].

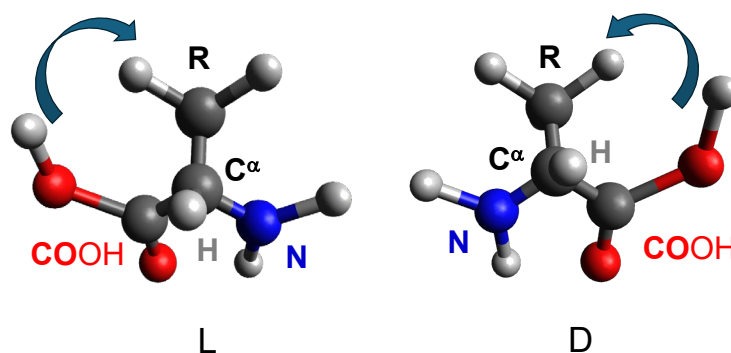


Figure 2. Determination of amino acid chirality using the “corn-crib” rule. The α -hydrogen (shown in grey) is oriented toward the observer. The carbonyl group (or carboxylic as in figure) is represented as CO, the side chain as R, and the α -amino group as N. For an L-amino acid, the sequence CO–R–N is read clockwise, whereas for a D-amino acid, it is read counterclockwise.

For an L-amino acid, when looking along the direction of the H-C α bond with the hydrogen atom oriented toward the observer and the carbon atom behind, the remaining substituents, the carbonyl (CO), side chain (R), and amino group (N), are arranged such that the sequence CO-R-N reads clockwise.

While most amino acids contain a single stereogenic center at the α -carbon, additional chiral centers may be present within the side chain, as in threonine (C β) and isoleucine (C γ). In these cases, the R/S system is preferred to unambiguously define the configuration of each stereocenter, e.g. (2S,3R)-threonine.

Effect of Amino Acid Handedness on Peptide Conformation

The peptide main-chain conformation is defined by the sequence of backbone dihedral angles, denoted as ϕ (phi) and ψ (psi), which correspond to rotations around the N-C α and C α -C' bonds, respectively (Figure 3).

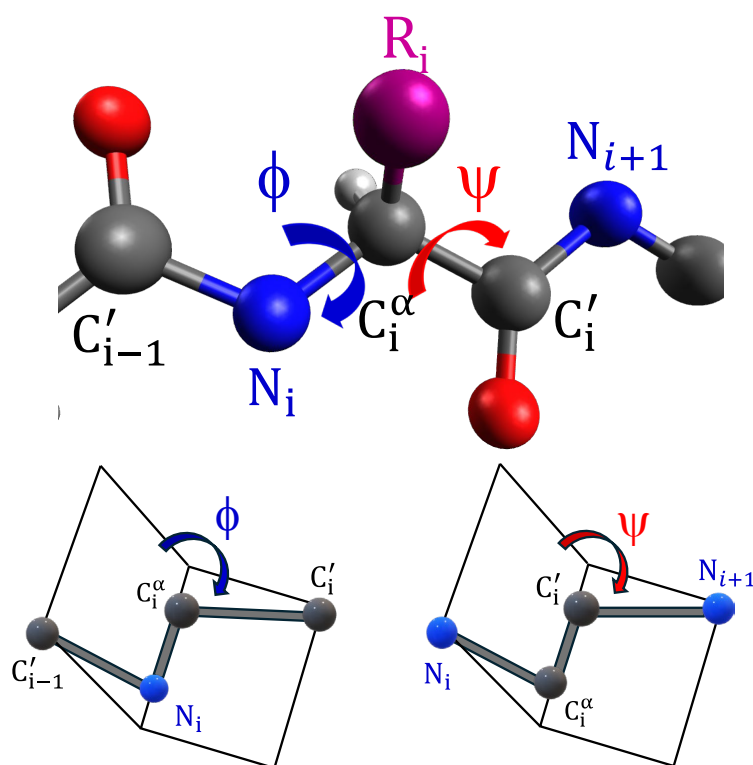


Figure 3. Definition of peptide backbone dihedral angles. The subscript i refers to the i -th amino acid. Double bonds and hydrogen atoms have been omitted for clarity.

Steric constraints limit free rotation around these two bonds, severely restricting the range of accessible ϕ and ψ values [10]. The allowed combinations of ϕ and ψ angles are conventionally represented in Ramachandran plots, which provide a visual map of sterically favorable conformations (Figure 4) [11].

Comparison of Ramachandran plots of L- and D-amino acids clearly shows that the two enantiomers populate distinct regions of conformational space that are related by mirror symmetry. Glycine represents a special case: being achiral, it exhibits enhanced conformational flexibility and can access regions characteristic of both L- and D-amino acids.

Amino acid chirality has a profound impact on the spatial organization of peptide secondary structures. Helices composed of L-amino acids almost exclusively adopt a right-handed screw sense, as left-handed helices are energetically disfavored due to steric clashes between side chains and backbone carbonyl groups. Conversely, helices composed of D-amino acids preferentially assume

left-handed conformations. Similar principles apply to higher-order assemblies such as coiled coils. In canonical coiled coils composed of L-amino acids, right-handed α -helices wrap around each other to form a left-handed supercoil [13]. This inversion of handedness mainly arises from packing effects. Mirror-image coiled coils assembled from D-amino acids display the opposite architecture, consisting of left-handed α -helices forming right-handed supercoils.

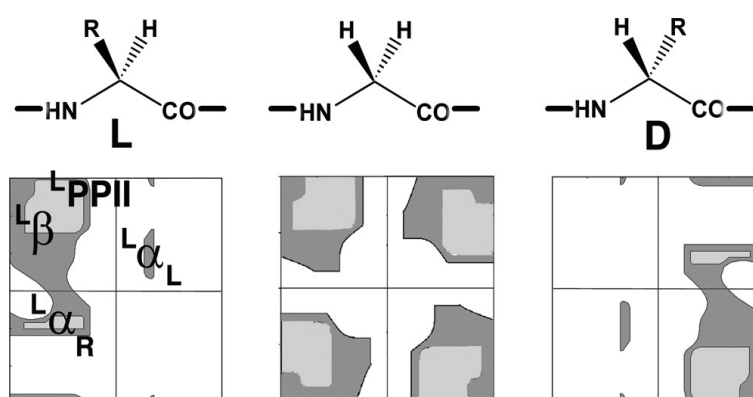


Figure 4. Ramachandran plots of a generic amino acid (excluding proline): L-amino acid (left), glycine (center), and D-amino acid (right). Allowed regions are shown as grey areas and are indicated in the left panel. $^L\alpha_R$: right-handed helix; $^L\alpha_L$: left-handed helix; $^L\beta$: beta-structure; $^L\text{PPII}$: polyproline II helix. Adapted with permission from S. Durani, Protein Design with L- and D- α -Amino Acid Structures as the Alphabet, *Accounts Chem Res* 41(10) (2008) 1301–1308 [12]. Copyright 2008 American Chemical Society.

In β -sheet structures, amino acid chirality affects the intrinsic twist of the β -strands, with L-amino acids favoring a right-handed twist, which in turn produces a left-handed spiral in the β -sheet.[14–16] β -turns, which connect two antiparallel β -strands, also exist in mirror-related conformations (e.g., Type I vs. Type I'), in which the peptide backbone adopts strictly mirror-image geometries. D-amino acids preferentially promote the formation of mirror-beta turns [17]. Homochiral β -strands, composed exclusively of L- or D-amino acids, align into geometrically compatible hydrogen-bonding arrays, forming planar β -sheet architectures. In contrast, when β -strands of opposite chirality are juxtaposed, the stereochemical mismatch prevents the formation of a flat sheet. These assemblies instead adopt a periodically undulated topology known as a rippled β -sheet. In such structures, alternating peptide strands with L- and D-configuration give rise to the characteristic rippled surface, as originally predicted by Pauling and Corey [18].

Heterochiral helical peptides, composed of segments with opposite chirality, retain the helical handedness dictated by the local amino acid chirality. Consequently, the helix undergoes a reversal of screw sense between segments, generating a structural discontinuity at the hinge site.[19,20]

Peptide hydrogel formation is a hierarchical and multiscale process that spans several levels of molecular organization. It begins at the molecular level, with peptide folding into defined secondary structural elements such as β -sheets, β -hairpins, or α -helices, which can further organize into tertiary-like arrangements stabilized by intramolecular hydrogen bonding, hydrophobic interactions, and side-chain packing.[21–24] These folded peptides subsequently undergo self-assembly into ordered supramolecular nanostructures, including nanotubes, nanowires, nanobelts, ribbons, and fibrillar architectures, depending on the peptide sequence, concentration, and environmental conditions. When these supramolecular peptide-based nanostructures exhibit a helical twist, their handedness can be classified according to the IUPAC helicity convention: structures adopting a clockwise progression of the helical contour along the principal axis are designated as P (plus, right-handed) helices, whereas those displaying a counterclockwise progression are designated as M (minus, left-handed) helices. At the next hierarchical level, these supramolecular building blocks interact and entangle to form a three-dimensional network that immobilizes large amounts of water, thereby giving rise to a macroscopic hydrogel [25].

Chirality plays a central role throughout the self-assembly process, particularly during the formation of supramolecular nanostructures. The intrinsic chirality of amino acids and the resulting handedness of peptide secondary structures are often propagated, leading to chiral supramolecular organization. For example, peptide nanofibers, commonly observed as the primary structural elements in peptide-based hydrogels, frequently adopt twisted or helical morphologies. Individual protofilaments or ribbons can laterally associate and wrap around each other, forming higher-order fibers with a defined screw sense, either right-handed or left-handed. This supramolecular chirality is typically dictated by the stereochemistry of the peptide building blocks, the preferred twist of β -sheets or helices, and the balance between hydrogen bonding, hydrophobic interactions, and electrostatic forces.[26,27] Importantly, chiral amplification can occur during assembly, whereby subtle stereochemical preferences at the molecular level are translated into pronounced macroscopic chirality at the nanofiber and network scales. This hierarchical transfer of chirality is a defining feature of peptide hydrogel systems and represents a key organizing principle governing their structural and mechanical properties.

3. Effect of Chirality on Physical and Mechanical Properties of Hydrogels

The chirality of amino-acids plays a key role in determining not only the secondary structures of peptides but also their solubility in aqueous media and their ability to form supramolecular structures able to interact with water to produce hydrogels. The physical properties of hydrogels, such as stiffness and porosity, are closely related to the morphology of the supramolecular assembly. Homochiral peptides of opposite chirality form secondary structures as mirror images, and the physical properties of the resulting hydrogels are generally comparable. In contrast, heterochiral peptides assemble into different structures compared to homochiral peptides, yielding hydrogels with diverse/divergent mechanical and physical properties. The effect of heterochirality on gelation is particularly evident in short peptides. Here, we describe hydrogels formed by homochiral and heterochiral peptides, classified according to their length, with the aim of highlighting the structural features that determine hydrogel formation and properties. Moreover, we report selected examples in which chiral structures are obtained using non-standard amino acids or by conjugating organic molecules or polymers to amino acids and peptides. The structures of some modified peptides, whose application as biomaterials are discussed in a dedicated paragraph, are illustrated in Figure 5.

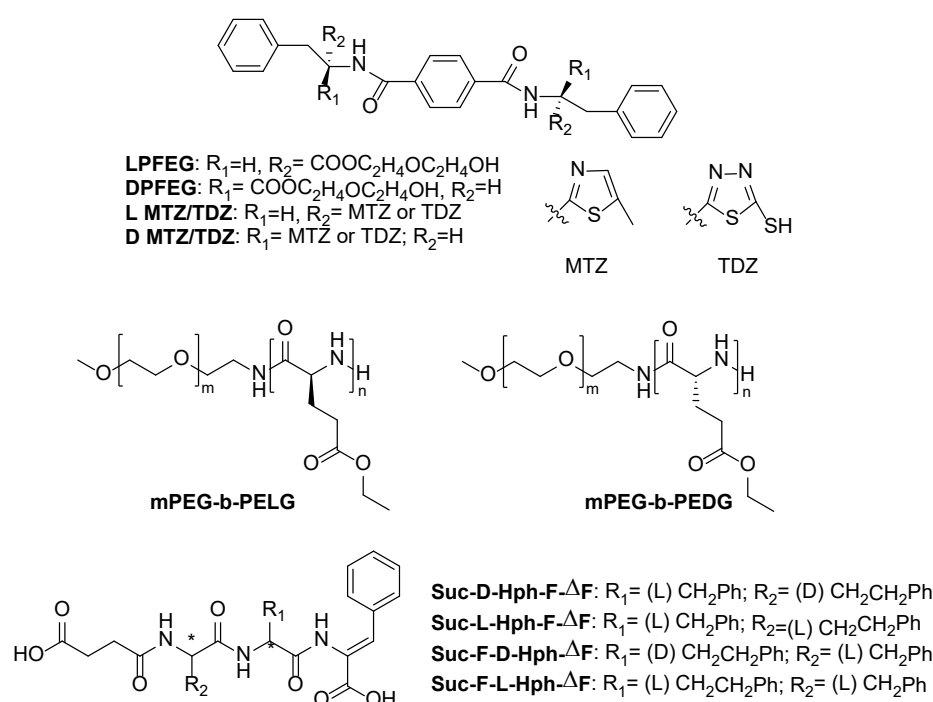


Figure 5. Chemical structures of selected modified dipeptides. Suc= succinyl; Hph= homophenylalanyl; ΔF= dehydrophenylalanyl; (L) and (D) refer to the residue configuration.

3.1. Analysis of Short Peptide-Forming Hydrogels

3.1.1. Dipeptide-Forming Hydrogels

Studies on dipeptides mainly focus on hydrophobic peptides, typically containing at least one F residue. In these cases, the chirality of the amino acids affects the peptide hydrophobicity, with heterochiral peptides generally being more hydrophobic than homochiral peptides and therefore more prone to forming hydrogels. This phenomenon can be explained by considering that a change in amino acid chirality induces a conformational modification in the dipeptide backbone as the preferred main-chain dihedral angles are opposite for L- and D-amino acids, as discussed in the previous section. Consequently, the relative orientation of the hydrophobic side-chains and the direction of the peptide bond dipoles are altered, affecting the exposure of hydrophobic surfaces and the net dipole moment, respectively. The gelation process in dipeptides is associated with the formation of nanotubes that can incorporate water. The dimensions of these nanotubes depend primarily on the peptide sequence and, in some cases, on chirality. Here, we discuss the properties of hydrogels formed by uncapped and capped peptides.

The FF sequence, known as the key assembly unit of the beta-amyloid polypeptide, is one of the most widely investigated low molecular weight gelator.[28–30] The homochiral peptide forms parallel beta sheets, with peptides held together by head-to-tail ionic interactions, producing rigid microtubes with heterogeneous diameters [31]. These assemblies yield a metastable hydrogel, which undergoes syneresis overtime and is not thermoreversible [32]. Hydrogel formed by the heterochiral peptide fF has been investigated by Kraly and coworkers in 2020 [33]. The dipeptide fF arranges into fibrils of homogeneous size with diameters of approximately 4 nm, forming a transparent hydrogel. The resistance to stress of the heterochiral peptide is superior to that of the homochiral peptide. X-ray diffraction (XRD) analysis of the nanotubes formed by homo- and heterochiral peptides has revealed similar supramolecular packing, with stacked peptides, similar patterns of hydrogen bonds, and salt bridges. The chirality of the N-terminal residue dictates the helical handedness along the tube. As a result, the homochiral FF assembles into a left-handed helical supramolecular structure, whereas the heterochiral fF shows the opposite handedness, supporting the observation that beta-structures composed of L-amino acids self-assemble with a left screw sense. The main difference between the assembled homo- and heterochiral peptides lies in the orientation of the aromatic rings. In homochiral FF, the rings generate a rugged surface, which promotes bundling of tubes. In contrast, in heterochiral fF, the aromatic rings adopt face-to-face orientation, producing a smoother surface that does not favor bundling. The solvent accessible surface area is larger for the heterochiral peptide than for the homochiral one, resulting in a homogeneous and transparent hydrogel. Hydrogel stability is related to the order of fibers. In cell culture medium, the stability of the fF hydrogel was higher compared to that of FF. Moreover, the biological properties of the homo- and heterochiral gels are distinct.

Other examples of hydrophobic uncapped peptides are dipeptides composed of leucine and phenylalanine of the same or opposite chirality [34]. All peptides, with the exception of FL, form hydrogels. In transmission electron microscopy (TEM), FL appears as an amorphous aggregate, while crystal structure analysis reveals the formation of nanotubes. The heterochiral fL forms a metastable gel, appearing in TEM as a mixture of crystals and short fibers. The X-ray structure reveals the formation of alternating hydrophilic and hydrophobic layers, in which the aromatic side chains of phenylalanine belonging to different layers interact, zipping the layers together to generate a surface that excludes water. Both LF homo- and heterochiral peptides form hydrogels, with gelation occurring faster for the heterochiral peptide than for the homochiral one. X-ray analysis of LF dipeptide reveals the presence of nanotubes, interdigitated with each other into zippers. LF and IF in

TEM appear as heterogeneous fibers. As observed for FF and fF, the formation of ordered supramolecular structures is a key factor driving hydrogel formation.

Cyclization of LF, IF, Lf into diketopiperazines produces highly hydrophobic compounds that do not form hydrogels, as they precipitate under aqueous conditions. Studies on the cyclic Ff have revealed a similar behavior. [35]

Studies on hydrogel formed by dipeptides containing isoleucine and phenylalanine, with the same or opposite chirality, have been described [36]. The isomers IF, if, and fl have been investigated as representative of their mirror images, as the supramolecular arrangement of enantiomers is identical. Heterochiral compounds are more hydrophobic than homochiral ones, suggesting a different spatial organization of the side chains and backbone. The homochiral peptides IF and if do not form hydrogels, whereas the heterochiral fl produces microfibers and an opaque gel. Its elastic modulus is higher than that of the hydrogel formed by its peptide isomer fL. TEM micrographs reveal that only fl peptide produces long fibers, whereas the other dipeptides form short fibers (< 2 microns) with limited interconnectivity. X-ray structure reveals that only the gelator dipeptide fl forms nanotubes similar to those of FF, held together by head-to-tail interactions, among six peptides, resulting in an amphipathic water channel. On the contrary, the non-gelling peptides are organized into amphiphilic layers.

Homochiral dipeptides composed of valine and phenylalanine show a behavior similar to the dipeptide composed of isoleucine and phenylalanine. The VF and FV peptides form amphipathic layers, lacking water channels and unable to form hydrogels.[37,38] In contrast, heterochiral peptides are more hydrophobic than their homochiral counterparts and are prone to fibrillation [39] X-ray data reveal that fV peptides assemble into nanotubes: four peptides are held by head-to-tail interactions, resulting in a channel filled with water. Consistent with these observations, TEM analyses reveal the presence of fibers for the gelling fV peptide. Analysis of the stability of the fV hydrogel in cell culture media reveals that it is limited, similarly to what is observed for fF hydrogels. In contrast, unlike the other heterochiral peptides, vF forms amorphous aggregates that do not yield hydrogels. In the gelling peptides, water molecules interact with extended stack; in the non-gelling peptides water molecules form H-bonds that interconnect different peptides, preventing the formation of a stable hydrogel.

A widely explored strategy to obtain new gelators consists in the functionalization of a peptide, for example through N-terminal conjugation with an aromatic moiety [40–42] Few examples of heterochiral capped peptides able to form hydrogels have been reported in the literature. Recent studies describe the gelation of fluorenylmethoxycarbonyl (Fmoc)-protected FF, ff, fF and Ff. The secondary structure of the peptides in the fibers was investigated by CD: all peptides adopt a β -sheet conformation, with slight differences in twist degree, likely due to the different aggregation pathways. Hydrogel formation was monitored by time-lapse optical microscopy imaging: gelation occurs when spheres that initially form turn into fibrils. This process occurs rapidly for homochiral peptides and is slower for heterochiral peptides [43]. The kinetic of fibrillization is different for the two hetero-enantiomers, being slower for Fmoc-Ff. In addition, the morphology of Fmoc-fF appears feathery-like, in contrast to the more compact morphology of Fmoc-Ff. The homochiral Fmoc-FF and Fmoc-ff peptides show very high storage moduli (G'). The heterochiral peptides show different stiffness: Fmoc-Ff has a lower G' than Fmoc-fF, suggesting a different molecular organization of the heterochiral molecules, likely reflecting variations in supramolecular interactions, which result in weaker gels.

In another example, homochiral FF and heterochiral Ff conjugated to a Peptide Nucleic Acid dimer have been investigated [44]. The conjugates form hydrogels when mixed with the peptides FF and Ff. These hydrogels display similar mechanical properties, as revealed by rheological analyses. Scanning Electron Microscopy (SEM) measurements reveal the presence of highly interconnected fibers in all cases. Interestingly, Small-Angle X-ray Scattering (SAXS) measurements indicate a difference in porosity between the homochiral and heterochiral hydrogels, likely due to variations in the degree of interconnections between fibers.

Following a different strategy, hydrogelators can be obtained by conjugating phenylalanine to hydrophobic, planar molecules. The 1,4 benzendicarbonylcarboxamide scaffold, conjugated to D- or L-phenylalanine-diglycol derivatives, has been largely investigated for hydrogel formation.[45–47] When the amino acid is in the L configuration, the derivative named LPFEG yields left-handed nanofibers (M-type). On the contrary, when the amino acid is in the D configuration, the derivative named DPFEG, forms right-handed nanofibers (P-type). The chemical structures of LPFEG and DPFEG are depicted in Figure 5. These compounds form porous hydrogels. The storage and loss modulus of the hydrogels with different chirality are similar. Importantly, these hydrogels are stable in cell culture media, allowing an extensive exploration of their applications as biomaterials (see paragraph 4). The chirality of the supramolecular structures can be tuned by modifying the distance between the amino acid and the benzendicarbonyl scaffold: when the distance between the aromatic ring and the carbonyl is one (or an odd number) of methylene units, left-handed helices are formed; when the number of methylene units is even, right-handed helices are formed [48]. These differences in supramolecular chirality result in hydrogels that perform differently in terms of supporting cell adhesion and proliferation.

DPFEG hydrogels were turned into stimuli responsive materials by mixing the peptide units with-graphene oxide (GO). The resulting DPFEG-GO hydrogels were exploited as delivery systems for cancer drugs [49]. GO is a stimuli-responsive material commonly used in photothermal therapy. Upon irradiation at NIR frequencies, the DPFEG right-handed helix (P-type) turns into a left-handed helix. The R-isomer of the drug oxaliplatin is specifically loaded by the hydrogel and is released after irradiation. Rheological analysis of the DPFEG-GO composite reveals that addition of GO results in an increase in both storage and loss modulus as compared to DPFEG hydrogel.

Replacement of glycol (EG) unit in DPFEG or LPFEG with 2-amino-5-methylthiazole (MTZ) or 5-amino-1,3,4-thiadiazole-2-thiol (TDZ) yields the corresponding L- or D-MTZ and L- or D-TDZ (Figure 5). L-MTZ and L-TDZ form left-handed fibers, whereas D-MTZ and D-TDZ form right-handed fibers [50]. The enantiomeric fibers show the same diameter. Rheological studies reveal that both hydrogels have similar resistance to external forces. G' values were higher for the D enantiomers, suggesting better viscoelastic properties. The D-hydrogel shows higher antibacterial activity as compared to the L counterpart.

3.1.2. Tripeptide-Forming Hydrogels

Formation of hydrogels using uncapped tripeptide has been demonstrated by Marchesan and coworkers, using sequences containing combinations of FF with V or L.[51–53] The homochiral peptides VFF and FFV exist as a mixture of secondary structures or in a disordered conformation and do not form hydrogels in physiological conditions. Changing the chirality of the residue at the N-terminus results in peptides able to form hydrogels at pH 7.4. The morphology observed at cryo-TEM of the two peptides is different: vFF assembles into long nanotapes, whereas fFV produces twisted nanofibers. CD and FT-IR data suggest formation of antiparallel beta-sheets and stabilization of the structure by head-to-tail interactions between carboxyl and amino termini. The inversion of configuration at the N-terminal residue relieves steric clashes between side chains at the strand termini, enabling steric-zipper packing. This motif can further assemble hierarchically into a hydrogel.

Further investigations have examined the peptide FFV in a study aimed at investigating the effect of chirality on the hydrogelation of tripeptides [53]. Eight peptides (four enantiomeric pairs) have been prepared, containing either one amino acid of different chirality, or three amino acids that are all L or all D. The configuration of the central amino acid drives the chirality of the supramolecular assembly, as assessed by CD spectroscopy. Only peptides with the N-terminal amino acid of different chirality compared to the others (fFV and Ffv) form ordered fibers and gelate. Ffv gelates faster and has a higher elastic modulus than fFV. It was hypothesized that these mixed chirality hydrogels differ in fiber density due to different interactions with counterions, which may affect salt bridges formation and, thus, the self-assembling process. No differences in cell viability have been observed.

Studies reported on LFF and IFF have reached similar conclusions [52]. Only the heterochiral peptide yields a hydrogel; analysis of freshly prepared IFF samples by atomic force microscopy (AFM) reveals the formation of fibers originating from globules. After 24 hours, the density of the fibrillar network increases, leading to an increase in the elastic modulus of the hydrogel. XRD analysis on the heterochiral peptide suggests that F zipper contributes to stabilizing the supramolecular structure, resulting in interdigitated beta sheets. On the contrary, the non-gelling homochiral peptide forms only globular structures, as shown by AFM and TEM experiments.

Studies on tripeptides with amino acids with alternate chirality of sequence FxF, where x is a D aliphatic amino acid such as Ile, Leu, Val, Nva (norvaline), Nle (norleucine) reveal that alternating chirality determines the formation of an amphiphilic structure, in which the aliphatic side chain of the D-amino acid is packed between the aromatic rings of Phe, creating a hydrophobic region that excludes water [54]. The kinked backbone defines the hydrophilic region with the charged termini displayed on opposite faces of the backbone. Salt bridges between the N- and C-terminal ends determine the formation of water channels. The phenyl rings zip the water channels. On the contrary, homochiral peptides adopt an extended structure, and no separation between the hydrophobic and hydrophilic faces occurs. Heterochiral peptides form hydrogels, unlike homochiral ones. They form fibers of different diameters, depending on the side chain of the central residue x. When x is D-Ile, D-Leu or D-Nle, the hydrogel forms with rapid kinetic and presents a higher elastic modulus as compared to gels in which x is D-Val or D-Nva. When x possesses a linear side chain (D-Nva or D-Nle), thick and rigid fibers form, which negatively affects the resistance of the hydrogel to applied stress. When x possesses a branched side chain (D-Val or D-Ile), thin and flexible interconnected fibers are formed. This results in hydrogels with higher resistance to stress than their linear counterparts.

As observed for uncapped dipeptides, in tripeptides the combination of heterochiral amino acids results in peptides with a higher propensity to gelate compared to homochiral ones.

The effect of capping on homochiral vs heterochiral tripeptides has been demonstrated by Carvalho et al [55]. Succinylated tripeptides of sequence homophenylalanine (Hph)-phenylalanine-dehydrophenylalanine (Δ F), in which Hph and F have either different chirality (respectively D,L) or identical chirality (L, L), have been investigated, along with peptides obtained from different combinations of these amino acids (Figure 5). Homo- and heterochiral peptides show a similar propensity to form hydrogels (CAC values are comparable); fibers observed by TEM appear long and thin and mixed with vesicles-like structures for heterochiral peptides, while thick, ribbon-like structures are observed for homochiral peptides. The homochiral peptide produces a hydrogel stronger than the heterochiral one in terms of resistance to strain but less elastic. The presence of Hph and f results in a structure different from that observed in peptides containing F, where aromatic rings typically stack. According to molecular dynamic (MD) simulations, interactions between the phenylalanine rings occur in a T-shaped geometry and this may determine the different fiber morphology and the different mechanical properties of the hydrogels.

3.2. Analysis of Long Peptide-Forming Hydrogels

The effect of chirality on the gelation properties of long peptides has been explored in different ways. Several examples of hydrogels formed by homochiral peptides of opposite chirality have been reported. In these cases, as also observed for short peptides, the physical and mechanical properties of the hydrogel are comparable.[56–58] Studies on FFFK and fffk tetrapeptides have shown that both peptides, in sucrose solution, produce porous hydrogels with similar mechanical properties, exhibiting shear-thinning and self-healing properties [56]. These properties make the hydrogel suitable for injection applications. The peptides are arranged into beta sheets, which in turn form nanofibers. TEM images show the formation of cylindrical nanofibers. Biological properties of the two hydrogels are affected by chirality.

Homochiral peptides of sequence FFFKTTKS and fffkttks form hydrogel in a sucrose solution [57]. Peptides composed of L-amino acids assemble into left handed helical nanofibers, while peptides composed of D-amino acids form right handed nanofibers. The diameter of both fibers is

comparable (13 and 15 nm). The hydrogels exhibit similar mechanical properties and form pores with an average pore size of 53 and 67 μm , which are conducive to cell migration, growth and differentiation, while showing different biological properties.

The use of mixture of identical peptides of opposite chirality represents another strategy to modulate the mechanical properties of biomaterials by tuning molecular interactions [59]. This approach, known as stereocomplexation, relies on interactions between complementary stereoregular molecules. The effect of stereocomplexation is sequence specific. When the β -hairpin peptide MAX1 (sequence: $(\text{VK})_4\text{VpPT}(\text{KV})_4$) and the $\text{Ac}(\text{FKFE})_2$ peptide, composed of alternating hydrophobic and hydrophilic residues, are blended with their enantiomers, the peptides organize into rippled beta-sheets, while the homochiral peptides form pleated beta-sheets.[60,61] The hydrogels formed by the blends exhibit a more rigid viscoelastic network than those formed by the homochiral peptides. In contrast, the blend of KYFIL and kyfil peptides, in which a hydrophobic stretch of amino acids is flanked by a hydrophilic amino acid, forms a hydrogel with lower stiffness than the hydrogel formed by homochiral components [62]. The homochiral peptides assemble into nanoscale fibers that entangle into a three-dimensional gel, whereas the heterochiral blend forms micron-scale plates, which are unable to entangle and therefore yield softer hydrogels.

When KYFIL and kyfil peptides are conjugated separately to a four-arm PEG, the stereocomplex formed by blending peptide-PEG conjugates of opposite chirality exhibits superior gelation compared to the homochiral PEG conjugates [63]. This phenomenon is attributed to the formation of β -sheets in the stereocomplex, as assessed by IR spectroscopy.

Heterochiral peptides can be generated using different strategies, such as alternating stretches of L- and D-amino acids, alternating L- and D-amino acids or replacing selected L-amino acid with D-amino acids.

The impact of block chirality has been investigated using the peptide KFE8 (FKFEFKFE): the comparison of homochiral and block heterochiral peptides, such as FKFEfkfe or fkfeFKFE shows that homochiral peptides assemble into β -sheets and form fibrils, while heterochiral peptides adopt a mixture of β -sheets and random conformations, producing helical tapes. In block heterochiral peptides, a rotation at the L/D interface occurs, which maintains the hydrogen bond network as well as hydrophobic and electrostatic interactions mediated by the F and K or E residues on the two faces of the β -sheets. Rheological studies indicate that homochiral peptide hydrogels possess higher storage moduli compared to those formed by heterochiral peptides. All hydrogels show consistent mechanical recovery after multiple cycles of low-high strains [64].

Another example of block chirality has been reported by Xie and coworkers, in studies aimed at relating the chirality of fibers formed upon peptide self-assembly to their antimicrobial activity. Homochiral peptides, obtained by conjugating the 16-carbon atom chain palmitic acid (C16) to a peptide, to give $\text{C}_{16}\text{V}_4\text{R}_4$ and $\text{C}_{16}\text{V}_4\text{I}_4$ and heterochiral $\text{C}_{16}\text{V}_4\text{R}_4$ were investigated [65]. The peptides form β -sheets further assembling into fibers; the degree of β -sheet twisting is lower in the heterochiral than in the homochiral peptides. The chirality of the valine residues dictates the screw sense of the helical fibers: the L peptide forms left-handed helices, while the D-peptides and the heterochiral peptides form right-handed helical structures. All peptides form hydrogels at pH 11, with the heterochiral peptide producing the least viscoelastic hydrogel. Interestingly, the antibacterial activity differs among enantiomers (see "The biology of chiral peptide hydrogel" paragraph).

Taraban and coworkers have described the mechanical properties of hydrogels formed by mixing a positively charged peptide with a negatively charged one, containing amino acids of the same or opposite chirality (Figure 6) [66]. These peptides are composed of hydrophobic amino acids such as W and A and hydrophilic amino-acids (K or E), Ac-XWXAXAXWX-NH_2 (X=K or E). Heterochiral peptides were obtained using alternating L- and D-amino acids. A mixture of heterochiral peptides does not form hydrogel. Mixture of homochiral peptides with opposite charge (one with X=K and the other with X=E) and opposite chirality as well as opposite charge and same chirality form hydrogels. When homochiral peptides with opposite chirality are mixed, gelation occurs faster than for mixture of peptides with the same chirality. On the contrary, mixture of peptide

with the same chirality produces hydrogels with higher strain yield than mixture of peptides with opposite chirality. SAXS analyses reveal the formation of elongated asymmetrical assemblies in the gelling mixtures and of oligomers of finite size in the non-gelling pairs. The homochiral pairs form strong hydrogels at a slower rate, which is attributed to fiber morphology. Homochiral pairs form thicker fibers than heterochiral pairs; heterochiral fibers are interconnected by thicker webs as compared to homochiral pairs.

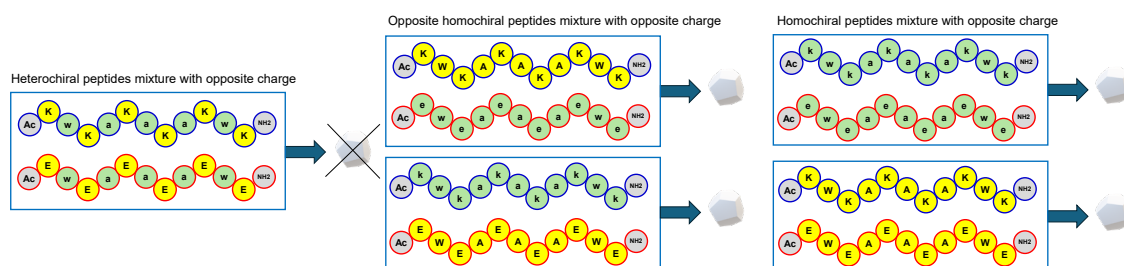


Figure 6. Hydrogel formation by peptide mixture as described by Taraban and coworker [66]. L-amino acids are represented as uppercase letters on a yellow background, while D-amino acids are shown as lowercase letters on a green background. Blue outlines indicate positively charged peptides, and red outlines indicate negatively charged peptides. The grey polyhedron represents a hydrogel.

Hydrogels can be obtained through the polymerization of amino acids. The chirality of amino acids critically affects both the polymers' structure and solubility. For example, polymerization of L-serine results in insoluble polymers; the polypeptide has a strong tendency to precipitate due to its propensity to fold into a β -sheet structure. On the contrary, polymers containing D- and L-serine, obtained after crosslinking acryl-derivatized poly-serine, can be used to obtain porous hydrogels [67]. The alternation of D- and L-amino acids modifies the polymer structure, resulting in a random coil conformation endowed with higher solubility. These hydrogels have been shown to be highly bio-inert and are therefore suitable for implantable biomedical devices, able to mitigate foreign body responses (FBR).

Finally, the effect of chirality on hydrogels composed of peptides and polymers has been explored. Hydrogels obtained upon crosslinking homochiral peptides Fmoc-FFC or Fmoc-ffc by poly(ethylene glycol) dimethyl acrylate (PEGDMA) were characterized [68]. CD profiles show opposite signals, as expected. TEM images reveal fibers of similar dimensions for gels of opposite chirality, and rheological studies reveal that these are soft hydrogels with comparable stiffness.

Homochiral and heterochiral peptides sensitive to matrix metalloproteinase (MMP) degradation were conjugated to an 8 arm PEG scaffold, with each arm modified with a norbornene. The homochiral peptide is composed of L-amino-acids (GPQGIWGQ), the heterochiral peptide (GPqGiwGQ) contains D-amino-acids at positions sensitive to protease degradation. Hydrogels were prepared using either each peptide separately or a mixture of the two. All hydrogels obtained after a photochemical reaction show similar physical and mechanical properties (porosity, pore size and Young's modulus) but different biological properties [69].

In a different approach, the effect of chirality has been investigated by exploring the properties of block copolymers containing PEG and γ ethyl L- or D-glutamate polymers, named mPEG-b-PELG (with the L amino acid) and mPEG-b-PEDG (with the D-amino acid) (Figure 5) [70]. Conjugation of PEG to the amino acid polymer changes the PEG hydrophobicity. The copolymers, synthesized by ring-opening polymerization of γ -ethyl-(L or D)-glutamate N-carboxyanhydride with a PEG unit, contain homochiral or heterochiral glutamate residues. The morphology of the copolymers depends on the chirality of the amino acid conjugated and on the relative ratio between L and D amino acids in the enantiomeric mixtures: spherical structures form when the L and D enantiomers are in a 1:1 molar ratio, whereas rod-like structures are observed when one enantiomer predominates. The heterochiral glutamate-based copolymer exhibits the shortest gelation time, the lowest gelation

temperature and the highest G' . On the contrary, block copolymer composed of PEG and heterochiral alanine show poorer gelation properties compared to copolymers of PEG and homochiral peptides [71]. The difference in the composition of the amino acid side-chain affects drastically the properties of the hydrogel [72].

4. The Biology of Chiral Peptide Hydrogel

The biological activity of peptide hydrogels is strongly governed by their molecular and supramolecular chirality. Understanding how chirality affects biological responses is therefore essential to fully exploit the potential of these materials in biomedical applications. From a medicinal chemistry perspective, one of the primary motivations for incorporating D-amino acids into peptide-based biomaterials is their enhanced resistance to proteolytic degradation. This increased stability can lead to prolonged persistence and functionality in biological environments, providing clear advantages for biomedical applications, such as drug delivery systems. Beyond protease resistance, molecular and supramolecular chirality represents a powerful tool to modulate a broad range of biological properties of peptide hydrogels. D-peptides could not only improve metabolic stability but also expand the spectrum of biological responses that can be elicited, enabling finer control over key cellular processes, including adhesion, migration, proliferation, differentiation, immune modulation, and tissue regeneration. Notably, as reported in the previous paragraphs, even the incorporation of a single D-amino acid within a peptide sequence can profoundly influence peptide self-assembly and supramolecular organization, with direct consequences on biological activity [73]. Furthermore, blending solutions of peptide enantiomers provides an additional level of control to fine-tune hydrogel biophysical properties, such as stiffness, stability, and morphology, which in turn influence cellular behavior and drug release profiles [62]. A growing body of literature has investigated how chiral peptide hydrogels differentially regulate biological processes, including stem cell differentiation, proliferation, cell adhesion and migration, immunomodulation, and tissue repair (Figure 7). These effects arise from the stereoselective recognition of chiral biomaterials by cells or from interaction with components of the extracellular matrix (ECM). Nevertheless, many studies lack direct comparisons between enantiomeric hydrogels, limiting a comprehensive understanding of chirality-driven biological effects. In the following sections, we examine the different biological responses elicited by hydrogels obtained from homo- and heterochiral peptides, as well as by mixtures of L- and D-peptides, highlighting the distinctive properties of each system and their respective advantages for specific biomedical applications.

4.1. Protease Stability

Early investigations into the use of D-amino acids in self-assembled peptide hydrogels were motivated by the hypothesis that these materials would display enhanced resistance to enzymatic degradation. In this framework, mirroring peptide stereochemistry has emerged as an effective strategy to extend hydrogel residence time, a key requirement for biomedical applications that demand long-term material persistence [73]. Importantly, the degradability of peptide hydrogels can be finely tuned by adjusting the relative proportions of L- and D-peptides, an approach that is particularly advantageous when these systems are employed as drug delivery platforms [74]. The enhanced proteolytic stability conferred by D-amino acids has been demonstrated in several systems. For instance, PEG-based polypeptide hydrogels incorporating γ -ethyl-D-glutamate, synthesized by ring-opening polymerization of γ -ethyl-D-glutamate N-carboxyanhydride with a PEG unit, exhibit markedly prolonged enzymatic degradation *in vitro*, as well as slower degradation in the subcutaneous tissue of rats [70]. Similar benefits have been reported for peptide hydrogels obtained by functionalizing a four-arm PEG scaffold with KYFIL and kyfil peptides [63]. While conjugation of each enantiomer alone yields materials that remain fully soluble in aqueous media, mixing the L- and D-peptide conjugates in a 1:1 ratio results in robust hydrogel formation with high resistance to proteolytic degradation [63].

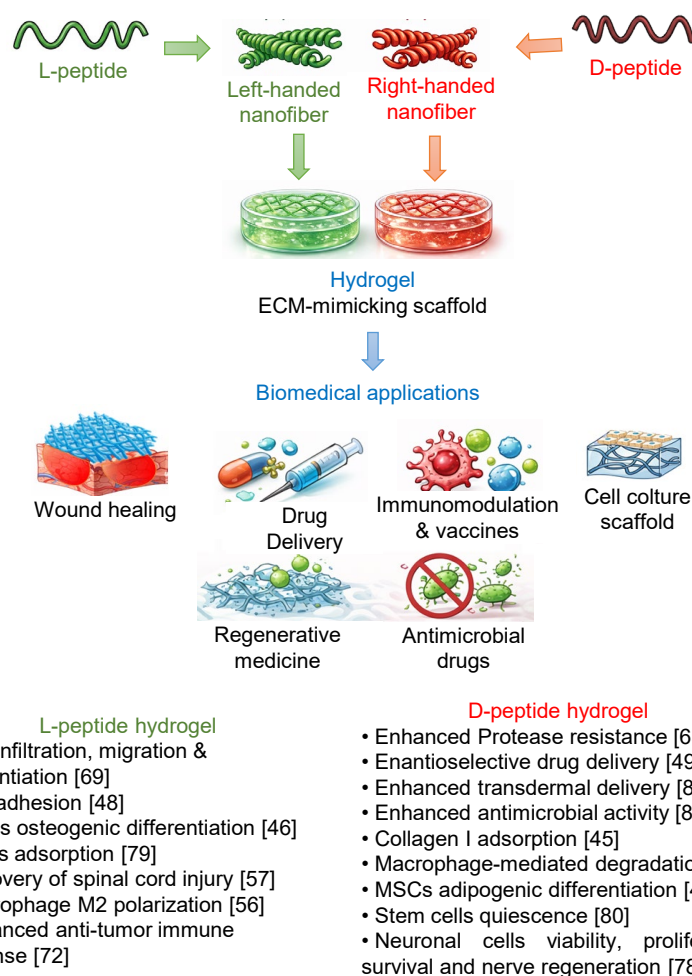


Figure 7. Biological features and applications of chiral peptide hydrogels. Top: L- or D-peptides can self-assemble into supramolecular nanofibers with opposite handedness. These nanofibers further assemble into three-dimensional hydrogel networks that mimic the architecture of the extracellular matrix and can support various biomedical applications. In addition, these materials can be exploited as cell culture scaffolds. Bottom: Examples of biological responses elicited by chiral peptide hydrogels described in this review are shown, with the corresponding references. MSC: mesenchymal stem cells; AGEs: advanced glycation end products.

Peptide chirality can also be leveraged to precisely modulate the degradation kinetics of protease-responsive hydrogels, such as MMP-sensitive systems. These materials are particularly relevant for bone regeneration, where controlled degradation is essential to create space for cell infiltration and migration while supporting neovascularization [75]. Chen and coworkers have demonstrated that the degradation behavior of PEG-based peptide hydrogels for bone tissue engineering can be tuned by inverting the chirality of selected amino acids within a MMP-cleavable peptide crosslinker. Hydrogels have been prepared using peptides containing the MMP sensitive sequence GPQGIWGQ or GPqGiwGQ. In particular, the homochiral L-peptide Ac-GCRDGPQGIWGQDRCG-NH₂, the heterochiral peptide, named D-peptide, Ac-GCRDGPqGiwGQDRCG-NH₂ or mixture of L- and D-peptides have been crosslinked to a norbornene-functionalized eight-arm PEG via a thiol–norbornene photoreaction, while an additional peptide (CGRGDSG), containing the RGD motif, has been included to promote cell adhesion. Despite exhibiting comparable mechanical properties, these hydrogels show markedly different degradation rates as a function of peptide chirality [69]. Interestingly, the same MMP-degradable peptides have been employed to prepare degradation-resistant microporous annealed particle (MAP) hydrogels for regenerative wound healing applications [76]. In this case, inversion of peptide chirality unexpectedly reduces degradation *in vitro* while significantly accelerating degradation *in vivo*. This

behavior has been attributed to enhanced recruitment of immune cells, particularly macrophages, within and around the D-peptide crosslinked MAP hydrogel (D-MAP) implants, which triggers a robust immune response and ultimately promoted tissue remodeling, skin regeneration, and hair follicle neogenesis [76].

4.2. Cytotoxicity, Adhesion, Differentiation and Tissue Regeneration

Subtle stereochemical modulation, such as the inversion of chirality of a single amino acid, can critically influence cytocompatibility as well as material architecture. For example, in the context of diphenylalanine-based peptide hydrogels, heterochirality has emerged as an effective design strategy to modulate both supramolecular organization and biological response. The homochiral dipeptide FF, which assembles into heterogeneous microtubes, is cytotoxic, while the hydrogel formed by the heterochiral analogue fF shows a decreased cytotoxic effect as demonstrated in fibroblast and keratinocyte cultures [33]. Moreover, only fF hydrogels form a continuous sheet that detaches from the bottom of culture wells and is preferentially colonized by cells, which proliferate in higher numbers compared to the underlying plastic layer. Similar observations have been reported for the fV dipeptide-based hydrogel [36]. Notably, this latter hydrogelator sequence lacks amyloid character, as confirmed by the absence of thioflavin T fluorescence, and exhibits excellent *in vitro* biocompatibility, with no cytotoxic effects observed in fibroblast cultures [36]. In addition, although the fV hydrogel partially dissolves and detached from the plastic surface, cells are found in high numbers within the gel matrix itself. This preferential growth within the hydrogel scaffold, rather than on the underlying plastic further supports the cytocompatibility and biological potential of heterochiral peptide hydrogels.

Peptide-based hydrogels are widely used as extracellular matrix (ECM) mimetics in biological applications, as they closely recapitulate key features of ECM, including high water content, structural similarity, and permeability that supports nutrient diffusion, metabolic exchange, and cell migration. These properties create a permissive microenvironment for cell adhesion, proliferation, and differentiation, highlighting peptide hydrogels as promising biomaterials for tissue regeneration and wound healing applications.[73,77] Within this framework, peptide chirality can be used to tune cellular behavior and tissue-specific biological responses. Accumulating evidence across multiple cell types indicates that matrices composed of L-peptides generally support adhesion, proliferation, and differentiation, whereas D-peptides often elicit weaker or even inhibitory effects, and therefore can show different applications.[48,68,78] A seminal contribution in this area was provided by Liu and coworkers, who have disentangled the respective roles of molecular and supramolecular chirality using hydrogels based on the LPFEG or DPFEG scaffold. Modifying the number of methylene units (odd or even) between the aromatic ring and the carbonyl switches the handedness of the resulting nanofibers while maintaining the amino acid (L- or D-Phe) configuration constant. This approach enables the independent evaluation of molecular versus supramolecular chirality in regulating cell behavior. Their work reveals that left-handed nanofibers derived from LPFEG induce the most pronounced enhancement of cell adhesion and proliferation. In contrast, right-handed nanofibers formed from LPFEG, as well as left-handed nanofibers assembled from DPFEG, produce only marginal effects on cell adhesion and proliferation. Right-handed nanofibers derived from D-phenylalanine exert instead a negative effect on cell adhesion [48]. This effect could be attributed to stereospecific recognition by cells (e.g., adhesion proteins).

Chiral peptide hydrogels are gaining increasing attention as drug-free wound dressings, for the treatment of chronic and non-healing wounds. Notably, compared to the levorotatory hydrogels, hydrogels derived from DPFEG selectively promote the adsorption of type I collagen [45]. This effect is likely related to their ability to mimic the native right-handed triple-helical architecture of collagen fibers. Enhanced collagen adsorption, in turn, facilitates keratinocyte adhesion, proliferation, and migration via integrin- and YAP-dependent signaling pathways, ultimately accelerating re-epithelialization and wound closure. These properties highlight the therapeutic potential of hydrogels based on right-handed helical superstructures for chronic wound management, including

diabetic ulcers [45]. It is noteworthy that chirality-dependent effects can be context-specific. In diabetic wound environments, LPFEG-based hydrogels outperform their DPFEG counterparts in the adsorption of advanced glycation end products (AGEs), which are key contributors to oxidative stress and impaired angiogenesis. To further enhance functionality, the LPFEG-based hydrogel has been modified with a natural cationic antimicrobial hexapeptide (RWRWRW) and cross-linked with hyaluronic acid. The resulting multifunctional chiral scaffold exhibits antibacterial activity, promotes fibroblast proliferation and migration, and stimulates angiogenesis, leading to significantly improved healing of infected diabetic wounds, particularly in terms of vascularization and re-epithelialization [79]. Collectively, these studies underscore the versatility of chiral hydrogels as tunable wound dressings and provide valuable design principles for targeting revascularization in diabetic wound care.

Chirality also plays a pivotal role in stem cell fate determination, where subtle differences in matrix handedness can profoundly influence lineage commitment. Using LPFEG and DPFEG Wei and coworkers have constructed self-assembled chiral hydrogels that form three-dimensional ECM-like microenvironments and exhibit similar biocompatibility toward encapsulated mesenchymal stem cells (MSCs). Despite these similarities, the two enantiomeric matrices selectively direct MSC differentiation toward either osteogenic or adipogenic lineages by activating distinct gene expression programs [46].

Comparable chirality-dependent outcomes have been observed in cross-linked peptide hydrogels, where cross-linking enables modulation of matrix stiffness to better mimic the mechanical properties of native tissues. For example, hydrogels have been obtained by photo-cross-linking the peptides Fmoc-FFC or Fmoc-ffc, which are cross-linkable derivatives of the Fmoc-FF dipeptide, with PEG dimethacrylate harm.[68,80] Studies on human bone marrow-derived MSCs have revealed that the L-form hydrogel supports cell proliferation, spreading, cell-cell interactions, and both osteogenic and adipogenic differentiation in three-dimensional culture. In contrast, the D-enantiomeric hydrogel markedly suppresses these processes. These observations suggest that Fmoc-ffc hydrogels may be particularly useful when maintenance of stem cell quiescence or an undifferentiated state is desired, potentially reducing risks associated with uncontrolled proliferation or tumorigenesis in cell-based therapies.

In striking contrast to most non-neural cell types, neuronal cells display a preferential response to matrices composed of D-amino acids. A growing number of studies report enhanced neuronal cell density, viability, survival, and differentiation on DPFEG hydrogels, a phenomenon described as "chirality selection for D-matrices".[78,81,82] At the molecular level, this effect has been linked to the activation of the JNK and p38/MAPK signaling pathways, triggered by reduced cytoskeletal tension arising from weaker interactions between D-matrices and actin filaments [78]. Importantly, DPFEG-based hydrogels have also demonstrated robust efficacy in peripheral nerve regeneration. Li and coworkers have shown that these materials significantly promote sciatic nerve repair, both with and without stem cell implantation, by enhancing Schwann cell proliferation, functionality, and myelination [78].

A chirality-dependent peptide hydrogel bioactivity has been also observed in retinal progenitor cells (RPCs). In this cell line, only DPFEG hydrogel significantly enhances RPC proliferation via activation of the Akt and ERK pathways ultimately leading to neuronal differentiation. Conversely, LPFEG hydrogels preserve RPC stemness. Notably, both enantiomeric matrices exhibit anti-inflammatory effects.[81,82] Altogether, these findings suggest potential applications of P-type nanofiber hydrogels in nerve regeneration and the treatment of neurodegenerative diseases.

Nevertheless, the application of peptide-based hydrogels in nerve regeneration as biomaterials is not limited to those composed of D-amino acids, as it critically depends on material design and the intended mechanism of action. For instance, Zhou and coworkers compared hydrogels formed by peptides FFFKTTKS and fffkttks in a spinal cord injury model [57]. The peptide sequence combines the collagen-stimulating pentapeptide KTTKS with three phenylalanine residues that drive self-

assembly. The hydrogel based on the L-peptide exhibits superior performance in promoting neuronal regeneration and motor function recovery in vivo.

4.3. Enhanced Delivery of Drugs

Chiral peptide hydrogels have been extensively investigated as delivery platforms for chiral drugs, including anticancer agents, by exploiting homochiral attractive interactions to preferentially load a specific drug enantiomer. For example, the hydrogel assembled from DPPEG-GO has been developed for the selective delivery of oxaliplatin through a photothermal and photoresponsive component [49]. In this system, (1*R*, 2*R*)-oxaliplatin exhibits preferential loading within the hydrogel network with respect to (1*S*, 2*S*)-oxaliplatin. Upon near-infrared irradiation, photothermal heating triggers a supramolecular helical inversion from left-handed to right-handed nanostructures, resulting in rapid drug release and synergistically combining chemotherapy with photothermal therapy.

Chiral supramolecular hydrogels formed from LPFEG and DPPEG gelators have also been explored to enhance transdermal drug delivery [83]. In a recent study, these materials have been employed for the topical administration of sodium aescinate, a bioactive compound with strong therapeutic potential for lymphedema but limited clinical applicability due to low metabolic stability and severe adverse effects associated with intravenous delivery. Owing to the pronounced enantioselectivity of the stratum corneum of the skin, particularly due to the presence of keratin fibers and ceramides, toward left-handed supramolecular architectures, the LPFEG hydrogel, which self-assembles into left-handed helical nanofibers, significantly outperforms its D-counterpart in promoting aescinate skin penetration. This enhanced transdermal transport translates into improved therapeutic efficacy in the treatment of lymphedema [83].

4.4. Immunomodulation and Vaccines

Peptide hydrogels composed of L- and D-amino acids can differentially regulate inflammatory responses and immune system activation, highlighting chirality as a key parameter in immunomodulatory biomaterial design. One of the major immunological processes influenced by chiral hydrogels is macrophage polarization, a central mechanism in immunosurveillance, inflammation, and tissue repair. In particular, the hydrogel obtained from the homochiral Ac-FFFFK peptide has been shown to preferentially promote macrophage polarization toward the M2 phenotype, which is associated with anti-inflammatory activity and regenerative functions, compared to the hydrogel obtained from the Ac-ffffk peptide [56].

Building on this concept, Yang and coworkers have employed LPFEG and DPPEG gelators to modulate macrophage polarization and investigate its impact on myocardial infarction repair [84]. Their results demonstrate that matrices formed by LPFEG containing left-handed helical nanofibers significantly suppress inflammatory responses and enhance myocardial tissue regeneration, by upregulating M2 macrophage polarization. Mechanistically, this effect is mediated by enhanced clustering of mechanosensitive integrin β 1, leading to the activation of focal adhesion kinase (FAK) and Rho-associated protein kinase, as well as downstream PI3K/Akt1/mTOR signaling pathways [84].

The influence of chirality on immune regulation has also attracted considerable attention in cancer vaccine research. In this context, Ding and coworkers have investigated how peptide hydrogel chirality shapes antitumor immunity and the local immune microenvironment [72]. Using mPEG-b-PELG and mPEG-b-PEDG hydrogels, they have demonstrated that hydrogels formed by mPEG-b-PEDG exhibit higher intrinsic immunogenicity and induce more pronounced immune cell infiltration in vivo. However, this excessive inflammatory response led to the establishment of an immunosuppressive microenvironment, characterized by upregulation of suppressive markers on antigen-presenting cells and exhaustion of T cells, ultimately resulting in insufficient antitumor efficacy. In contrast, the more balanced immune activation elicited by mPEG-b-PELG hydrogels generate superior anti-tumor immune responses. This study provides valuable design principles for

peptide hydrogel-based vaccine platforms, in which chirality can be strategically tuned to optimize immune activation while avoiding immune exhaustion.

Beyond vaccination, chiral peptide hydrogels have also shown promise in mitigating implantation-induced FBRs. Poly(DL-serine) hydrogels implanted subcutaneously in mice exhibit markedly improved anti-FBR performance compared to conventional PEG-based hydrogels, as evidenced by reduced inflammatory cell infiltration and lower expression of pro-inflammatory cytokines and genes after implantation [67]. These results further underscore the versatility of chiral peptide hydrogels as biocompatible and immunomodulatory materials with broad potential for biomedical and translational applications.

4.5. Antibacterial Activity

Chiral peptide hydrogels have demonstrated significant antibacterial potential. The introduction of D-amino acids into self-assembling antimicrobial peptides (AMPs) can enhance their proteolytic stability, activity, and selectivity, thereby broadening strategies to combat multidrug-resistant pathogens and enabling the development of innovative, infection-resistant scaffolds for tissue engineering. A representative example is the peptide Ac-khhqklvffak (KKd-11), containing the self-assembling klvffak motif together with basic residues to impart antimicrobial activity [58]. Although the two enantiomers of the peptide show the same minimum inhibitory concentration (MIC), KKd-11 has been shown to self-assemble into a hydrogel with superior long-term antimicrobial activity compared to the hydrogel fully composed of L-amino acids, Ac-KHHQKLVFFAK (KK-11), an effect attributed to its enhanced resistance to proteolytic degradation. Notably, additional studies on KKd-11 have demonstrated that it not only inhibits biofilm formation but also disrupts preformed mature biofilms [58]. Similar results have been reported for the peptide (2-Nap)-FIIKKK (IK1; where Nap is naphthaleneacetic acid) which has been synthesized in the mirror form, composed entirely of D-amino acids (D-IK1) [85]. In addition, since the peptide contains three isoleucine residues, each bearing an additional chiral center in the side chain, a further D-analog has been prepared in which the Ile residues were substituted with D-allo-Ile isomer. The results reveal that both analogs containing D-Ile and D-allo-Ile retain the ability to self-assemble into hydrogels and exhibit significantly enhanced resistance to chemical and proteolytic degradation. Moreover, they show higher antibacterial activity against sensitive bacterial strains, as evidenced by lower MIC values, compared to the L-amino acid-based enantiomer. Notably, the D-peptide analogs also display improved ability to impair the viability of HepG2 hepatocarcinoma cells. Interestingly, D-IK1 analogs are able to support fibroblasts adhesion and proliferation, demonstrating their utility as a 3D scaffold for cell culture applications. Overall, these properties suggest that D-IK1 analogs may represent versatile wound dressings, suitable for use as a cell culture scaffolds, for the prevention of multidrug-resistant bacterial infections, inhibition of tumor recurrence, and promotion of wound healing [85].

In the context of the antibacterial properties of hydrogels, the interactions between bacteria and chiral peptides-based materials play a significant role. Hydrogels composed of helical nanofibers with different degrees of twist have been successfully obtained through the self-assembly of the homochiral peptides C₁₆-V₄R₄ and C₁₆-V₄I₄, as well as the heterochiral peptide C₁₆-V₄R₄. Self-assembly is driven by the hydrophobic palmitoyl chains (C₁₆) attached to the N-terminus of the β -sheet-forming stretch of four valine residues, while strong affinity for bacterial cell membranes arises from the cationic four arginine residues at the C-terminus. Compared to the homochiral systems, the heterochiral C₁₆-V₄R₄ peptide self-assembles into more stable right-handed helical nanofibers with a lower degree of twisting and a larger helical pitch, which exhibit enhanced membrane-disrupting capability, as confirmed by membrane permeability assays, and consequently higher antimicrobial activity [65]. Lastly, chiral hydrogels derived from LPFEG and DPFEG gelators modified with MTZ and TDZ have shown antibacterial activity against both Gram-positive and Gram-negative bacteria, with enhanced efficacy for TDZ-based systems [50]. Importantly, hydrogels with right-handed nanofibers (D-MTZ and D-TDZ) exhibit higher antibacterial activity than the left-handed counterparts, indicating stereoselective interactions with bacterial cells. The results highlight the

amplification of chirality at the supramolecular level as a key factor governing the biological performance of chiral hydrogels.

5. Conclusions

The effect of chirality of the peptide sequences on the physical and biological properties of hydrogels is strictly related to the length of the sequence. The chirality of amino acids within a peptide sequence has a significant effect on the physical properties of short peptides. Compared to homochiral di or tripeptides, heterochiral peptides show reduced solubility in aqueous media and increased tendency to form fibrillar structures able to yield hydrogels upon interaction with water. In long peptide sequences, the introduction of a few amino acids of different chirality has a less marked effect. Conversely, when the percentage of amino acids of different chirality is higher (around 50%), long peptides tend to assume a more disordered structure than their homochiral counterparts. This often results in amorphous supramolecular structures, with a lower tendency to form hydrogel. The physical properties of hydrogels, such as stiffness and porosity, are instead related to the density of the 3D network formed by supramolecular structures, as fibers or tubes. The application of peptide-based hydrogel as biomaterials has been widely explored, particularly for hydrogels composed of long peptides. Interactions between short, uncapped peptides are too weak and are not stable in media rich of salts or nutrients, such cell culture media. Although efforts toward the improvement of the mechanical properties of hydrogels composed of short peptides have been reported, the effect of chirality on stability of these systems remains poorly investigated.

References

1. Kaygisiz, K.; Sementa, D.; Athiyarath, V.; Chen, X.; Ulijn, R.V. Context dependence in assembly code for supramolecular peptide materials and systems. *Nat Rev Mater* **2025**, *10*, 449–472.
2. Xu, T.; Wang, J.; Zhao, S.; Chen, D.; Zhang, H.; Fang, Y.; Kong, N.; Zhou, Z.; Li, W.; Wang, H. Accelerating the prediction and discovery of peptide hydrogels with human-in-the-loop. *Nat Commun* **2023**, *14*, 3880.
3. Frederix, P.W.; Scott, G.G.; Abul-Haija, Y.M.; Kalafatovic, D.; Pappas, C.G.; Javid, N.; Hunt, N.T.; Ulijn, R.V.; Tuttle, T. Exploring the sequence space for (tri-)peptide self-assembly to design and discover new hydrogels. *Nat Chem* **2015**, *7*, 30–37.
4. Lakshmanan, A.; Hauser, C.A. Ultrasmall peptides self-assemble into diverse nanostructures: Morphological evaluation and potential implications. *Int J Mol Sci* **2011**, *12*, 5736–5746.
5. Hauser, C.A.E.; Deng, R.S.; Mishra, A.; Loo, Y.H.; Khoe, U.; Zhuang, F.R.; Cheong, D.W.; Accardo, A.; Sullivan, M.B.; Riekel, C.; Ying, J.Y.; Hauser, U.A. Natural tri- to hexapeptides self-assemble in water to amyloid β -type fiber aggregates by unexpected α -helical intermediate structures. *P Natl Acad Sci USA* **2011**, *108*, 1361–1366.
6. Gelain, F.; Luo, Z.L.; Zhang, S.G. Self-Assembling Peptide EAK16 and RADA16 Nanofiber Scaffold Hydrogel. *Chem Rev* **2020**, *120*, 13434–13460.
7. Dawson, P.E.; Muir, T.W.; Clarklewis, I.; Kent, S.B.H. Synthesis of Proteins by Native Chemical Ligation. *Science* **1994**, *266*, 776–779.
8. Harrison, K.; Mackay, A.S.; Kambanis, L.; Maxwell, J.W.C.; Payne, R.J. Synthesis and applications of mirror-image proteins. *Nat Rev Chem* **2023**, *7*, 383–404.
9. Richardson, J.S. The anatomy and taxonomy of protein structure, *Adv Protein Chem* **34** (1981) 167–339.
10. Ho, B.K.; Thomas, A.; Brasseur, R. Revisiting the Ramachandran plot: Hard-sphere repulsion, electrostatics, and H-bonding in the α -helix. *Protein Sci* **2003**, *12*, 2508–2522.
11. Ramachandran, G.N.; Ramakrishnan, C.; Sasisekharan, V. Stereochemistry of polypeptide chain configurations. *J Mol Biol* **1963**, *7*, 95–99.
12. Durani, S. Protein Design with L- and D- α -Amino Acid Structures as the Alphabet. *Accounts Chem Res* **2008**, *41*, 1301–1308.
13. Woolfson, D.N. Understanding a protein fold: The physics, chemistry, and biology of alpha-helical coiled coils. *J Biol Chem* **2023**, *299*, 104579.

14. Chou, K.C.; Nemethy, G.; Scheraga, H.A. Energetics of Interactions of Regular Structural Elements in Proteins. *Accounts Chem Res* **1990**, *23*, 134–141.
15. Chothia, C. Conformation of Twisted Beta-Pleated Sheets in Proteins. *J Mol Biol* **1973**, *75*, 295–302.
16. Jimenez, J.L.; Nettleton, E.J.; Bouchard, M.; Robinson, C.V.; Dobson, C.M.; Saibil, H.R. The protofilament structure of insulin amyloid fibrils. *Proc Natl Acad Sci U S A* **2002**, *99*, 9196–9201.
17. Gunasekaran, K.; Gomathi, L.; Ramakrishnan, C.; Chandrasekhar, J.; Balam, P. Conformational interconversions in peptide beta-turns: Analysis of turns in proteins and computational estimates of barriers. *J Mol Biol* **1998**, *284*, 1505–1516.
18. Pauling, L.; Corey, R.B. Two Rippled-Sheet Configurations of Polypeptide Chains, and a Note about the Pleated Sheets. *Proc Natl Acad Sci U S A* **1953**, *39*, 253–256.
19. Banerjee, A.; Raghothama, S.R.; Karle, I.L.; Balam, P. Ambidextrous molecules: Cylindrical peptide structures formed by fusing left- and right-handed helices. *Biopolymers* **1996**, *39*, 279–285.
20. Shepherd, N.E.; Hoang, H.N.; Abbenante, G.; Fairlie, D.P. Left- and right-handed alpha-helical turns in homo- and hetero-chiral helical scaffolds. *J Am Chem Soc* **2009**, *131*, 15877–15886.
21. Banwell, E.F.; Abelardo, E.S.; Adams, D.J.; Birchall, M.A.; Corrigan, A.; Donald, A.M.; Kirkland, M.; Serpell, L.C.; Butler, M.F.; Woolfson, D.N. Rational design and application of responsive alpha-helical peptide hydrogels. *Nat Mater* **2009**, *8*, 596–600.
22. Dexter, A.F.; Fletcher, N.L.; Creasey, R.G.; Filardo, F.; Boehm, M.W.; Jack, K.S. Fabrication and characterization of hydrogels formed from designer coiled-coil fibril-forming peptides. *Rsc Adv* **2017**, *7*, 27260–27271.
23. Fletcher, N.L.; Lockett, C.V.; Dexter, A.F.; A pH-responsive coiled-coil peptide hydrogel. *Matter*, **2011**, *7*, 10210–10218.
24. O’Leary, L.E.R.; Fallas, J.A.; Bakota, E.L.; Kang, M.K.; Hartgerink, J.D. Multi-hierarchical self-assembly of a collagen mimetic peptide from triple helix to nanofibre and hydrogel. *Nature Chemistry* **2011**, *3*, 821–828.
25. Zhang, S. Fabrication of novel biomaterials through molecular self-assembly. *Nat Biotechnol* **2003**, *21*, 1171–1178.
26. Adamcik, J.; Mezzenga, R. Study of amyloid fibrils via atomic force microscopy. *Curr Opin Colloid In* **2012**, *17*, 369–376.
27. Knowles, T.P.; Fitzpatrick, A.W.; Meehan, S.; Mott, H.R.; Vendruscolo, M.; Dobson, C.M.; Welland, M.E. Role of intermolecular forces in defining material properties of protein nanofibrils. *Science* **2007**, *318*, 1900–1903.
28. Adler-Abramovich, L.; Vaks, L.; Carny, O.; Trudler, D.; Magno, A.; Caffisch, A.; Frenkel, D.; Gazit, E. Phenylalanine assembly into toxic fibrils suggests amyloid etiology in phenylketonuria. *Nat Chem Biol* **2012**, *8*, 701–706.
29. Liu, X.Y.; Jiang, Q.C.; Yin, Y.; Liang, G.L. Phe-Phe-Based Macroscopic Supramolecular Hydrogel Construction Strategies and Biomedical Applications. *Chem Bio Eng* **2024**, *1*, 664–677.
30. Das, T.; Haring, M.; Halder, D.; Diaz, D.D. Phenylalanine and derivatives as versatile low-molecular-weight gelators: Design, structure and tailored function. *Biomater Sci* **2017**, *6*, 38–59.
31. Azuri, I.; Adler-Abramovich, L.; Gazit, E.; Hod, O.; Kronik, L. Why are diphenylalanine-based peptide nanostructures so rigid? Insights from first principles calculations. *J Am Chem Soc* **2014**, *136*, 963–969.
32. Conte, M.P.; Singh, N.; Sasselli, I.R.; Escuder, B.; Ulijn, R.V. Metastable hydrogels from aromatic dipeptides. *Chem Commun (Camb)* **2016**, *52*, 13889–13892.
33. Kralj, S.; Bellotto, O.; Parisi, E.; Garcia, A.M.; Iglesias, D.; Semeraro, S.; Deganutti, C.; D’Andrea, P.; Vargiu, A.V.; Geremia, S.; De Zorzi, R.; Marchesan, S. Heterochirality and Halogenation Control Phe-Phe Hierarchical Assembly. *ACS Nano* **2020**, *14*, 16951–16961.
34. Bellotto, O.; Kralj, S.; De Zorzi, R.; Geremia, S.; Marchesan, S. Supramolecular hydrogels from unprotected dipeptides: A comparative study on stereoisomers and structural isomers. *Soft Matter* **2020**, *16*, 10151–10157.
35. Rosetti, B.; Scarel, E.; Colomina-Alfaro, L.; Adorinni, S.; Pierri, G.; Bellotto, O.; Mamprin, K.; Polentarutti, M.; Bandiera, A.; Tedesco, C.; Marchesan, S. Self-Assembly of Homo- and Hetero-Chiral Cyclodipeptides into Supramolecular Polymers towards Antimicrobial Gels. *Polymers-Basel* **2022**, *14*.

36. Bellotto, O.; Kralj, S.; Melchionna, M.; Pengo, P.; Kisovec, M.; Podobnik, M.; De Zorzi, R.; Marchesan, S. Self-Assembly of Unprotected Dipeptides into Hydrogels: Water-Channels Make the Difference. *Chembiochem* **2022**, *23*.
37. de Groot, N.S.; Parella, T.; Aviles, F.X.; Vendrell, J.; Ventura, S. Ile-Phe dipeptide self-assembly: Clues to amyloid formation. *Biophys J* **2007**, *92*, 1732–1741.
38. Kurbasic, M.; Semeraro, S.; Garcia, A.M.; Kralj, S.; Parisi, E.; Deganutti, C.; De Zorzi, R.; Marchesan, S. Microwave-Assisted Cyclization of Unprotected Dipeptides in Water to 2,5-Piperazinediones and Self-Assembly Study of Products and Reagents. *Synthesis-Stuttgart* **2019**, *51*, 2839–2844.
39. Bellotto, O.; Pierri, G.; Rozhin, P.; Polentarutti, M.; Kralj, S.; D'Andrea, P.; Tedesco, C.; Marchesan, S. Dipeptide self-assembly into water-channels and gel biomaterial. *Org Biomol Chem* **2022**, *20*, 6211–6218.
40. Silva, A.M.G.P.; Martins, M.F.; Oliveira, C.B.P.; Martins, J.A.; Ferreira, P.M.T.; Queiroz, M.J.R.P.; S., S.O., S-Heterocycle-Dipeptide Conjugates for Supramolecular Hydrogel Formation. *Molecules* **2025**, *30*.
41. Diaferia, C.; Rosa, E.; Gallo, E.; Morelli, G.; Accardo, A. Differently N-Capped Analogues of Fmoc-FF. *Chem-Eur J* **2023**, *29*.
42. Nelli, S.R.; Xing, Y.M.; Talloj, S.K.; Saddik, A.A.; Mohammed, M.; Yeh, M.Y.; Lin, H.C. Design of Chirality-Controlled Ketorolac-Peptide Conjugates for Selective COX-2 Inhibition and Localized Drug Release. *Chem-Asian J* **2025**, *20*.
43. Chatterjee, M.; Grinberg, I.; Bera, S.; Cohen-Gerassi, D.; Ben-Zvi, O.; Yacoby, I.; Aviv, M.; Adler-Abramovich, L. Controlling Supramolecular Assembly through Peptide Chirality. *ACS Appl Mater Interfaces* **2025**, *17*, 66998–67009.
44. Miglioli, I.; Ajò, A.; Di Ciolo, S.; Carofiglio, M.; di Prisco, D.; Siliqi, D.; De Cola, L.; Romanelli, A. Self-Assembly of Heterochiral and Homochiral Peptides Conjugated to PNA Dimers and Their Integration in Peptide-Based Hydrogels. *Chem-Eur J* **2025**, *31*.
45. Zhu, H.; Xing, C.; Dou, X.; Zhao, Y.; Peng, Y.; Feng, C.; Fang, Y. Chiral Hydrogel Accelerates Re-Epithelization in Chronic Wounds via Mechanoregulation. *Adv Healthc Mater* **2022**, *11*, e2201032.
46. Wei, Y.; Jiang, S.; Si, M.; Zhang, X.; Liu, J.; Wang, Z.; Cao, C.; Huang, J.; Huang, H.; Chen, L.; Wang, S.; Feng, C.; Deng, X.; Jiang, L. Chirality Controls Mesenchymal Stem Cell Lineage Diversification through Mechanoresponses. *Adv Mater* **2019**, *31*, e1900582.
47. Liu, G.F.; Zhang, D.; Feng, C.L. Control of Three-Dimensional Cell Adhesion by the Chirality of Nanofibers in Hydrogels. *Angew Chem Int Edit* **2014**, *53*, 7789–7793.
48. Liu, J.; Yuan, F.; Ma, X.; Auphedeous, D.Y.; Zhao, C.; Liu, C.; Shen, C.; Feng, C. The Cooperative Effect of Both Molecular and Supramolecular Chirality on Cell Adhesion. *Angew Chem Int Ed Engl* **2018**, *57*, 6475–6479.
49. Wang, X.Q.; Wu, B.B.; Zhang, Y.Q.; Feng, C.L. Chiral graphene-based supramolecular hydrogels toward tumor therapy. *Polym Chem-Uk* **2022**, *13*, 1685–1694.
50. Baddi, S.; Dang-i, A.Y.; Huang, T.T.; Xing, C.; Lin, S.J.; Feng, C.L. Chirality-influenced antibacterial activity of methylthiazole- and thiadiazole-based supramolecular biocompatible hydrogels. *Acta Biomater* **141** (2022) 59–69.
51. Marchesan, S.; Easton, C.D.; Kushkaki, F.; Waddington, L.; Hartley, P.G. Tripeptide self-assembled hydrogels: Unexpected twists of chirality. *Chem Commun (Camb)* **2012**, *48*, 2195–2197.
52. Marchesan, S.; Waddington, L.; Easton, C.D.; Winkler, D.A.; Goodall, L.; Forsythe, J.; Hartley, P.G. Unzipping the role of chirality in nanoscale self-assembly of tripeptide hydrogels. *Nanoscale* **2012**, *4*, 6752–6760.
53. Marchesan, S.; Easton, C.D.; Styan, K.E.; Waddington, L.J.; Kushkaki, F.; Goodall, L.; McLean, K.M.; Forsythe, J.S.; Hartley, P.G. Chirality effects at each amino acid position on tripeptide self-assembly into hydrogel biomaterials. *Nanoscale* **2014**, *6*, 5172–5180.
54. Garcia, A.M.; Iglesias, D.; Parisi, E.; Styan, K.E.; Waddington, L.J.; Deganutti, C.; De Zorzi, R.; Grassi, M.; Melchionna, M.; Vargiu, A.V.; Marchesan, S. Chirality Effects on Peptide Self-Assembly Unraveled from Molecules to Materials. *Chem-Us* **2018**, *4*, 1862–1876.
55. Carvalho, A.F.; Pereira, T.; Oliveira, C.; Figueiredo, P.; Carvalho, A.; Pereira, D.M.; Hilliou, L.; Banobre-Lopez, M.; Xu, B.; Ferreira, P.M.T.; Martins, J.A. Tripeptides Featuring Dehydrophenylalanine and

- Homophenylalanine: Homo- Versus Hetero-Chirality and Sequence Effects on Self-Assembly and Gelation. *Gels* 2025, 11.
56. Mu, Z.; Shen, T.; Deng, H.; Zeng, B.; Huang, C.; Mao, Z.; Xie, Y.; Pei, Y.; Guo, L.; Hu, R.; Chen, L.; Zhou, Y. Enantiomer-Dependent Supramolecular Immunosuppressive Modulation for Tissue Reconstruction. *ACS Nano* 2024, 18, 5051–5067.
57. Zhou, X.L.; Guo, Y.Q.; Wei, Y.; Cheng, H.L.; Wu, A.M.; Wang, X.Y.; Chen, L.M.; Zhou, Y.L. Nervous System Repair and Immunity: Chiral Effects of Biomimetic Self-Assembled Neuropeptide Hydrogels. *Adv Funct Mater* 2025, 35.
58. Guo, Z.; Wang, Y.J.; Tan, T.Y.; Ji, Y.W.; Hu, J.; Zhang, Y.; Hydrogels, A.D.-P. *ACS Biomater Sci Eng* 2021, 7, 1703–1712.
59. Worch, J.C.; Prydderch, H.; Jimaja, S.; Bexis, P.; Becker, M.L.; Dove, A.P. Stereochemical enhancement of polymer properties. *Nat Rev Chem* 2019, 3, 514–535.
60. Nagy-Smith, K.; Beltramo, P.J.; Moore, E.; Tycko, R.; Furst, E.M.; Schneider, J.P.; Molecular; Local, and Network-Level Basis for the Enhanced Stiffness of Hydrogel Networks Formed from Coassembled Racemic Peptides: Predictions from Pauling and Corey. *ACS Central Sci* 2017, 3, 586–597.
61. Swanekamp, R.J.; DiMaio, J.T.; Bowerman, C.J.; Nilsson, B.L. Coassembly of enantiomeric amphipathic peptides into amyloid-inspired rippled beta-sheet fibrils. *J Am Chem Soc* 2012, 134, 5556–5559.
62. Duti, I.J.; Florian, J.R.; Kittel, A.R.; Amelung, C.D.; Gray, V.P.; Lampe, K.J.; Letteri, R.A. Peptide Stereocomplexation Orchestrates Supramolecular Assembly of Hydrogel Biomaterials. *J Am Chem Soc* 2023, 145, 18468–18476.
63. Duti, I.J.; Paul, J.; Reilly, K.S.; Miller, D.R.; Dickie, D.A.; Letteri, R.A. Peptide stereocomplex cross-links for polymer hydrogels. *Chem Sci* 2025, 16, 11931–11938.
64. Clover, T.M.; O'Neill, C.L.; Appavu, R.; Lokhande, G.; Gaharwar, A.K.; Posey, A.E.; White, M.A.; Rudra, J.S. Self-Assembly of Block Heterochiral Peptides into Helical Tapes. *J Am Chem Soc* 2020, 142, 19809–19813.
65. Xie, Y.Y.; Qin, X.T.; Zhang, J.X.; Sun, M.Y.; Wang, F.P.; Huang, M.M.; Jia, S.R.; Qi, W.; Wang, Y.F.; Zhong, C. Self-assembly of peptide nanofibers with chirality-encoded antimicrobial activity. *J Colloid Interf Sci* 622 (2022) 135–146.
66. Taraban, M.B.; Feng, Y.; Hammouda, B.; Hyland, L.L.; Yu, Y.B. Chirality-Mediated Mechanical and Structural Properties of Oligopeptide Hydrogels. *Chem Mater* 2012, 24, 2299–2310.
67. Zhang, D.H.; Chen, Q.; Bi, Y.F.; Zhang, H.D.; Chen, M.Z.; Wan, J.L.; Shi, C.; Zhang, W.J.; Zhang, J.Y.; Qiao, Z.Q.; Li, J.; Chen, S.F.; Liu, R.H. Bio-inspired poly-DL-serine materials resist the foreign-body response. *Nature Communications* 2021, 12.
68. Zheng, H.; Yoshitomi, T.; Yoshimoto, K. Analysis of Chirality Effects on Stem Cell Fate Using Three-dimensional Fibrous Peptide Hydrogels. *ACS Appl Bio Mater* 2018, 1, 538–543.
69. Chen, W.K.; Sheng, S.H.; Tan, K.; Wang, S.C.; Wu, X.; Yang, J.Y.; Hu, Y.; Cao, L.H.; Xu, K.; Zhou, F.J.; Su, J.C.; Zhang, Q.; Yang, L. Injectable hydrogels for bone regeneration with tunable degradability via peptide chirality modification. *Mater Horiz* 2024, 11, 4367–4377.
70. Li, D.; Zhao, D.; He, C.; Chen, X. Crucial Impact of Residue Chirality on the Gelation Process and Biodegradability of Thermoresponsive Polypeptide Hydrogels. *Biomacromolecules* 2021, 22, 3992–4003.
71. Choi, Y.Y.; Joo, M.K.; Sohn, Y.S.; Jeong, B. Significance of secondary structure in nanostructure formation and thermosensitivity of polypeptide block copolymers. *Soft Matter* 2008, 4, 2383–2387.
72. Ding, J.F.; Wang, T.R.; Lin, Z.Q.; Li, Z.Y.; Yang, J.X.; Li, F.J.; Rong, Y.; Chen, X.S.; He, C.L. Chiral polypeptide hydrogels regulating local immune microenvironment and anti-tumor immune response. *Nature Communications* 2025, 16.
73. Melchionna, M.; Styan, K.E.; Marchesan, S. The Unexpected Advantages of Using D-Amino Acids for Peptide Self-Assembly into Nanostructured Hydrogels for Medicine. *Curr Top Med Chem* 2016, 16, 2009–2018.
74. Zhu, S.W.; Nih, L.; Carmichael, S.T.; Lu, Y.F.; Segura, T. Enzyme-Responsive Delivery of Multiple Proteins with Spatiotemporal Control. *Advanced Materials* 2015, 27, 3620–3625.

75. Clark, A.Y.; Martin, K.E.; García, J.R.; Johnson, C.T.; Theriault, H.S.; Han, W.M.; Zhou, D.W.; Botchwey, E.A.; García, A.J. Integrin-specific hydrogels modulate transplanted human bone marrow-derived mesenchymal stem cell survival, engraftment, and reparative activities. *Nature Communications* 2020, 11.
76. Griffin, D.R.; Archang, M.M.; Kuan, C.H.; Weaver, W.M.; Weinstein, J.S.; Feng, A.C.; Ruccia, A.; Sideris, E.; Ragkousis, V.; Koh, J.; Plikus, M.; Di Carlo, D.; Segura, T.; Scumpia, P.O. Activating an adaptive immune response from a hydrogel scaffold imparts regenerative wound healing. *Nat Mater* 2021, 20, 560–569.
77. Zhang, Z.; He, C.; Chen, X. Designing Hydrogels for Immunomodulation in Cancer Therapy and Regenerative Medicine. *Adv Mater* 2024, 36, e2308894.
78. Li, Y.; Wang, Y.; Ao, Q.; Li, X.; Huang, Z.; Dou, X.; Mu, N.; Pu, X.; Wang, J.; Chen, T.; Yin, G.; Feng, H.; Feng, C. Unique Chirality Selection in Neural Cells for D-Matrix Enabling Specific Manipulation of Cell Behaviors. *Adv Mater* 2023, 35, e2301435.
79. Xing, C.; Zhu, H.T.; Dou, X.Q.; Gao, L.B.; Baddi, S.; Zou, Y.Q.; Zhao, C.L.; Peng, Y.B.; Fang, Y.; Feng, C.L. Infected Diabetic Wound Regeneration Using Peptide-Modified Chiral Dressing to Target Revascularization. *Acs Nano* 2023, 17, 6275–6291.
80. Yoshitomi, T.; Zheng, H.; Yoshimoto, K. Investigations of Chirality Effects on Undifferentiated State of Mesenchymal Stem Cells Using Soft Nanofibrous Oligopeptide Hydrogels. *Anal Sci* 2021, 37, 539–543.
81. Sun, N.; Dou, X.Q.; Tang, Z.M.; Zhang, D.D.; Ni, N.; Wang, J.J.; Gao, H.Q.; Ju, Y.H.; Dai, X.C.; Zhao, C.L.; Gu, P.; Ji, J.; Feng, C.L. Bio-inspired chiral self-assemblies promoted neuronal differentiation of retinal progenitor cells through activation of metabolic pathway. *Bioact Mater* 2021, 6, 990–997.
82. Sun, N.; Wang, J.J.; Dou, X.Q.; Wang, Y.Q.; Yang, Y.; Xiao, D.; Zhao, P.Q.; Li, J.; Wang, S.T.; Gu, P.; Ji, J. A chiral microenvironment promotes retinal progenitor cell proliferation by activating the Akt and ERK pathways. *Biomater Sci-Uk* 2022, 10, 5938–5946.
83. Wang, X.; Cui, C.; Meng, X.; Han, C.; Wu, B.; Dou, X.; Zhao, C.; Zhang, Y.; Li, K.; Feng, C. Chiral Supramolecular Hydrogel Enhanced Transdermal Delivery of Sodium Aescinate to Modulate M1 Macrophage Polarization Against Lymphedema. *Adv Sci (Weinh)* 2024, 11, e2303495.
84. Yang, L.; Yang, L.; Lu, K.L.; Su, N.; Li, X.Q.; Guo, S.X.; Xue, S.; Lian, F.; Feng, C.L. 3D Chiral Self-Assembling Matrixes for Regulating Polarization of Macrophages and Enhance Repair of Myocardial Infarction. *Adv Sci* 2023, 10.
85. Tian, Y.; Hou, Y.Q.; Tian, J.K.; Zheng, J.; Xiao, Z.Y.; Hu, J.; Zhang, Y. D-Peptide cell culture scaffolds with enhanced antibacterial and controllable release properties. *J Mater Chem B* 2024, 12, 8122–8132.

Disclaimer/Publisher's Note: The statements, opinions and data contained in all publications are solely those of the individual author(s) and contributor(s) and not of MDPI and/or the editor(s). MDPI and/or the editor(s) disclaim responsibility for any injury to people or property resulting from any ideas, methods, instructions or products referred to in the content.