

Article

Not peer-reviewed version

---

# Decision-Grade Risk and Cost Mapping for Illegal Gold Mining at Crucitas, Costa Rica: Prioritisation, Phased Remediation Portfolios, and Uncertainty-Aware Policy Ranking

---

[Andrea Navarro Jiménez](#) \*

Posted Date: 26 January 2026

doi: 10.20944/preprints202601.1933.v1

Keywords: present value costing; illegal gold mining; remote sensing change proxies; policy pathway comparison; Monte Carlo uncertainty analysis



Preprints.org is a free multidisciplinary platform providing preprint service that is dedicated to making early versions of research outputs permanently available and citable. Preprints posted at Preprints.org appear in Web of Science, Crossref, Google Scholar, Scilit, Europe PMC.

Copyright: This open access article is published under a [Creative Commons CC BY 4.0 license](#), which permit the free download, distribution, and reuse, provided that the author and preprint are cited in any reuse.

Disclaimer/Publisher's Note: The statements, opinions, and data contained in all publications are solely those of the individual author(s) and contributor(s) and not of MDPI and/or the editor(s). MDPI and/or the editor(s) disclaim responsibility for any injury to people or property resulting from any ideas, methods, instructions, or products referred to in the content.

Article

# Decision-Grade Risk and Cost Mapping for Illegal Gold Mining at Crucitas, Costa Rica: Prioritisation, Phased Remediation Portfolios, and Uncertainty-Aware Policy Ranking

Andrea Navarro Jiménez

Chongqing University, China; andrenavarrojime@gmail.com

## Abstract

Artisanal and illegal gold extraction in ecologically sensitive tropical landscapes generates persistent environmental and fiscal liabilities that can accumulate even under formal mining prohibitions. This study develops a decision-grade pipeline that converts observable environmental signals into spatial prioritisation surfaces, phase-timed remediation portfolios, and present-value (PV) comparisons of legislative policy pathways under uncertainty, demonstrated for the Crucitas mining landscape (Crucitas, northern Costa Rica). Five linked models are implemented. Remote-sensing change proxies are constructed using consistent baseline (January 2019–December 2020) and recent (February 2024–January 2025) windows; multi-criteria indices then yield a 0–100 grid-cell prioritisation surface integrating land, water, and hydrologic dimensions. The prioritisation output is translated into a phased remediation portfolio across 1,324 costed grid cells, producing a gross liability of US\$548.0 million (10-year PV; 5% discount rate). PSA-related credits total US\$167.3 million PV, reducing baseline net PV to US\$380.8 million. Deterministic policy overlays yield policy-adjusted net PV of US\$366.6 million under Exp. 24.717 ( $\Delta = -\text{US}\$14.2$  million vs baseline; modeled royalty PV US\$34.6 million), US\$390.7 million under Exp. 24.675 ( $\Delta = +\text{US}\$9.94$  million), and US\$393.6 million under Law No. 8904 ( $\Delta = +\text{US}\$12.83$  million). Monte Carlo propagation produces a right-tailed baseline distribution (P10–P90 = US\$393.1–469.4 million; P50 = US\$429.9 million) with exceedance probabilities  $P(>\text{US}\$400 \text{ million}) = 0.8522$  and  $P(>\text{US}\$500 \text{ million}) = 0.0101$ . Policy-adjusted uncertainty bounds indicate reduced exceedance risk under Exp. 24.717 ( $P(>\text{US}\$400 \text{ million}) = 0.7024$ ;  $P(>\text{US}\$500 \text{ million}) = 0.0031$ ) and increased exceedance risk under non-mining pathways. Results support PV-consistent, uncertainty-aware comparison of contested pathways, with rankings conditional on enforceable offsets, credible enforcement, and residual-risk provisioning; the framework is transferable to contested mining landscapes where phased interventions and policy alternatives require fiscal comparability.

**Keywords:** present value costing; illegal gold mining; remote sensing change proxies; policy pathway comparison; Monte Carlo uncertainty analysis

## 1. Introduction

Artisanal and illegal gold extraction in ecologically sensitive tropical landscapes presents a persistent governance challenge because environmental damages, public-health risks, and fiscal liabilities can continue to accumulate even where industrial mining is formally prohibited (IGF, 2019; Hattingh et al., 2021). In such settings, policy debate often polarizes around normative positions (prohibition versus regularisation) while lacking quantified evidence on three decision-critical questions: where impacts are concentrated, what remediation would cost over time, and how

alternative legislative pathways shift net public liabilities once enforcement, residual risk, and potential revenue or offset mechanisms are treated explicitly rather than implicitly.

The Crucitas mining landscape (Cutris, northern Costa Rica) exemplifies this tension in a transboundary, connectivity-relevant setting near the San Juan River and embedded within the San Juan–La Selva corridor context, where land-use decisions can propagate beyond the immediate footprint through hydrologic and ecological pathways (Monge & Chassot, 2009). Public technical commentary from the period of the halted industrial project emphasized that the proposed open-pit configuration would have been situated in a high-rainfall environment with shallow groundwater and plausible downstream exposure routes for sediment and process-related contaminants (Astorga, 2009). Contemporaneous reporting documented how quickly irreversible landscape change could occur under enabling decisions, including rapid forest clearing and the prospect of much larger authorized disturbance envelopes (Biamonte, 2011). These attributes motivate an assessment approach that is spatially explicit, hydrologically attentive, and capable of representing how liabilities scale under alternative access and extraction dynamics.

Independent field evidence further indicates that illegal alluvial practices in the Crucitas setting are associated with contamination mechanisms directly relevant to hydrologic prioritisation and remediation design. Field sampling and synthesis have reported mercury contamination concerns and acid-drainage processes linked to illegal mining activity, underscoring that the governance problem is operationally environmental and can translate into persistent, water-facing liabilities (Gazel et al., 2019).

Current policy debate in Crucitas is not well represented by a binary “mine vs. no mine” framing. Public reporting describes multiple concurrent pathways spanning (i) concession-based industrial regularisation with structured state participation, (ii) regulated artisanal/cooperative arrangements, and (iii) non-extractive “development pole/geopark” designs that seek to finance recovery and livelihoods through institutional finance mechanisms and remediation-linked gold recovery rather than opening a new extraction pathway (Martínez, 2024). Coverage further suggests that legal eligibility under the executive pathway could extend across the full district of Cutris, implying that policy design may expand exposure and tail-risk considerations well beyond the historic concession geometry (Pomareda García, 2025). In parallel, investigative reporting indicates that illegal-mining supply chains may displace processing impacts beyond the extraction footprint through off-site informal processing nodes, complicating “site-only” remediation accounting unless explicitly parameterised in sensitivity analysis (Esquivel Solano & Rivera, 2024). Related synthesis has flagged inconsistencies in gold-export statistics and traceability narratives, reinforcing that enforcement effectiveness, leakage, and provenance controls are not background assumptions but central determinants of pathway performance (Delfino, 2025).

Despite rapid advances in Earth observation and environmental risk mapping, two gaps limit decision relevance in contested mining landscapes. First, remote-sensing products are frequently used to demonstrate disturbance or land-cover change, but are seldom translated into decision-grade prioritisation surfaces that link spatial signals to actionable intervention packages and phased implementation (Maus et al., 2022). Second, economic assessments often report aggregate damages or remediation costs without a transparent mechanism for coupling spatial prioritisation to present-value (PV) financial planning and for comparing policy pathways on a common fiscal basis—particularly when long-horizon closure and water-treatment liabilities dominate cost profiles and are sensitive to discounting, updating, and tail-risk treatment (Chambers, 2024; SRK Consulting (U.S.) Inc. & World Bank, 2021). These gaps constrain practical decision-making, including: (i) estimation of remediation liability under current landscape conditions, (ii) identification of priority intervention locations and sequences, and (iii) evaluation of how specific legislative pathways shift expected net PV liability once enforcement costs, residual risk, and potential revenue or offset terms are incorporated.

This study presents an integrated, multi-model framework for the Crucitas landscape that converts remote-sensing change signals into phased financial liabilities and policy-pathway

comparisons under uncertainty. Three research questions guide the analysis: (1) Which grid cells exhibit the strongest multi-domain signals consistent with intervention prioritisation in land, water, and hydrology dimensions? (2) What are the PV-consistent gross and net public liabilities of a phase-timed remediation portfolio derived from those prioritisation surfaces? (3) How do alternative policy pathways shift the distribution of net PV liabilities and exceedance risk under unit-cost uncertainty?

The framework comprises five linked models. Model 1 constructs baseline-to-recent change proxies in terrestrial disturbance indicators and riparian water proxies using consistent windows (baseline January 2019–December 2020; recent February 2024–January 2025). Model 2 integrates these signals with terrain and hydrological predictors to compute component indices (land, water, hydrology) and a combined 0–100 prioritisation surface at grid-cell resolution. Model 3 provides field-anchored screening by evaluating whether remotely sensed and terrain-derived predictors recover observed variability in mercury-related indicators under leave-one-out cross-validation, thereby bounding interpretation of remote-sensing-only screening. Model 4 translates the prioritisation surface into a phase-timed remediation portfolio with explicit intervention packages and unit-cost envelopes, computing PV gross and net liabilities and decomposing costs by phase and package; policy pathways are implemented as model-ready levers that modify costs, revenues/offsets, timing, and residual provisioning. Model 5 propagates key uncertainties through Monte Carlo simulation to quantify exceedance risk and evaluate how policy pathways shift the full distribution of net PV liabilities. Collectively, the framework provides an end-to-end translation from environmental signals to fiscal decision variables, enabling transparent comparison of legislative pathways on a common PV and probabilistic-risk basis.

## 2. Methodology

This section describes the geospatial data acquisition and Google Earth Engine–based export pipeline used to generate ring-compatible predictor stacks for downstream analysis.

### 2.1. Study Area Definition and Ring-Based Analysis Zones

Spatial inference is anchored at the Crucitas reference location (centroid of the project feature) and evaluated using concentric annular zones (“rings”) to support distance-structured comparisons (Gorelick et al., 2017). Rings are defined as a donut-shaped region between an inner and outer radius, ensuring that feature extraction remains comparable across distance intervals. To ensure transparency and reproducibility of the spatial partitioning used for downstream modeling, ring geometry is formalized in Eq. (1):

$$\Omega_{r_1:r_2} = \text{Buffer}(x_0, r_2) \setminus \text{Buffer}(x_0, r_1)$$

Where:

- $\Omega_{r_1:r_2}$  = annular analysis zone between inner radius  $r_1$  and outer radius  $r_2$
- $x_0$  = Crucitas reference point (centroid)
- $\text{Buffer}(x_0, r)$  = circular buffer of radius  $r$  around  $x_0$
- $r_1, r_2$  = ring radii (e.g., 1–5 km, 5–10 km, 10–20 km)
- $\setminus$  = set-difference operator (outer minus inner)

### 2.2. Context Covariates: Topography and Rasterized Hydrographic/Settlement Layers

A multiband context stack is generated to provide consistent spatial covariates for interpretation and downstream modeling, including elevation-derived terrain metrics and rasterized vector context layers. Elevation is sourced from NASADEM, from which slope and hillshade are derived (NASA Jet Propulsion Laboratory, 2020). Hydrographic network lines, settlement points, and administrative boundaries are rasterized into binary presence layers to provide structured contextual predictors at a consistent footprint for ring-based feature extraction (Gorelick et al., 2017).

### 2.3. Sentinel-2 indices and monthly compositing (TIF23 disturbance stack; TIF22 water-proxy stack)

Sentinel-2 Surface Reflectance imagery is filtered to the export footprint and screened using scene classification to reduce cloud and shadow contamination (Drusch et al., 2012; European Union/ESA/Copernicus, n.d.). Disturbance-sensitive indices are computed from surface reflectance, including NDVI, NDMI, and BSI (Eqs. 2–4). Monthly composites are constructed using pixel-wise median statistics, producing a fixed-schema, time-indexed multiband stack for disturbance characterization.

$$NDVI = \frac{\rho_{NIR} - \rho_{RED}}{\rho_{NIR} + \rho_{RED}}$$

Where:

- $\rho_{NIR}$  is near-infrared surface reflectance (Sentinel-2 B8).
- $\rho_{RED}$  is red surface reflectance (Sentinel-2 B4).

$$NDMI = \frac{\rho_{NIR} - \rho_{SWIR1}}{\rho_{NIR} + \rho_{SWIR1}}$$

Where:

- $\rho_{SWIR1}$  is shortwave infrared 1 surface reflectance (Sentinel-2 B11).
- $\rho_{NIR}$  is near-infrared surface reflectance (Sentinel-2 B8).

$$BSI = \frac{(\rho_{SWIR1} + \rho_{RED}) - (\rho_{NIR} + \rho_{BLUE})}{(\rho_{SWIR1} + \rho_{RED}) + (\rho_{NIR} + \rho_{BLUE})}$$

Where:

- $\rho_{BLUE}$  is blue surface reflectance (Sentinel-2 B2).
- $\rho_{RED}, \rho_{NIR}, \rho_{SWIR1}$  are as defined above.

For water-proxy monitoring, a riparian corridor mask is used to restrict analysis to areas proximate to streams. A turbidity/suspended-sediment proxy is computed using NDTI (Eq. 5) (European Union/ESA/Copernicus, n.d.). Stable surface water is identified using the Global Surface Water occurrence product (Pekel et al., 2016) to constrain interpretation to persistent water bodies.

$$NDTI = \frac{\rho_{RED} - \rho_{GREEN}}{\rho_{RED} + \rho_{GREEN}}$$

Where:

- $\rho_{GREEN}$  is green surface reflectance (Sentinel-2 B3).
- $\rho_{RED}$  is red surface reflectance (Sentinel-2 B4).

NDTI is treated as an optical proxy for relative turbidity/suspended-sediment conditions and is not a direct contaminant concentration metric.

#### 2.4. Hydrology and Erosion-Driver Layers (Ring-Compatible Footprint)

Hydrologic and terrain-based predictors are derived from MERIT Hydro and NASADEM, including upstream-area proxies, distance-to-stream, and related terrain metrics (Yamazaki et al., 2019; NASA Jet Propulsion Laboratory, 2020). All layers are exported over a buffer that fully covers the maximum ring extent to prevent outer-ring truncation and to ensure consistent sampling support across  $\Omega_{r1:r2}$ .

#### 2.5. Integrated Impact-Driver Stack (TIF24) and Baseline-to-Recent Change Metrics

A consolidated impact-driver GeoTIFF integrates multi-sensor indicators relevant to land disturbance and environmental change, including Sentinel-2 baseline versus recent composites (Drusch et al., 2012; European Union/ESA/Copernicus, n.d.), Sentinel-1 VV/VH backscatter changes (Torres et al., 2012; European Union/ESA/Copernicus, n.d.), precipitation sums from CHIRPS (Funk et al., 2015), Dynamic World bare-ground indicators (Brown et al., 2022), and forest-loss indicators

from the Hansen global forest change lineage (Hansen et al., 2013). Change features are operationalized as signed baseline-to-recent differences (Eq. 6), ensuring consistent directionality across indices and facilitating cross-layer interpretation.

$$\Delta V = V_{recent} - V_{base}$$

Where:

- $V_{base}$  is the baseline-window statistic (e.g., median over 2019–2020).
- $V_{recent}$  is the recent-window statistic (e.g., median over 2024–2025).
- $\Delta V$  is the signed change feature used for screening (e.g.,  $\Delta NDVI$ ,  $\Delta BSI$ ,  $\Delta VV$ ).

## 2.6. Export Conventions and Reproducibility Controls

All outputs are exported as GeoTIFFs using consistent coordinate reference settings and deterministic band naming conventions to enable automated feature extraction (Gorelick et al., 2017). Monthly stacks enforce a stable schema across time by preserving masked values in periods with insufficient observations, preventing column drift during downstream ingestion. Vector-derived context products are rasterized at analysis scale to minimize inconsistencies between gridded predictors and ring extraction. A complete inventory of geospatial inputs, Earth Engine products, temporal coverage, spatial resolution, and exported file schemas is provided in Supplementary Table 1. Following raster export, predictors are operationalized as AOI-level feature matrices via zonal reduction to support consistent downstream inference.

## 2.7. Zonal Feature Extraction over Analysis Zones

To generate ring-compatible predictors for downstream analysis, raster stacks are summarized over each analysis zone  $\Omega$  (e.g., administrative unit, buffer, or annulus) using zonal reduction. For border-adjacent contexts, analysis zones are spatially constrained to the national boundary prior to reduction to ensure that extracted values reflect only the intended jurisdictional footprint. Zonal features are computed by applying a reducer  $R_j$  to the distribution of valid pixel values within  $\Omega$ , formalized as Eq. (7):

$$s_{k,j}(\Omega, t) = R_j(\{V_k(x, t) \mid x \in \Omega, M(x, t) = 1\})$$

Where:

- $s_{k,j}(\Omega, t)$  is the summary statistic  $j$  for predictor band  $k$  evaluated over analysis zone  $\Omega$  at time  $t$  (or for a static composite when  $t$  is not time-indexed).
- $V_k(x, t)$  is the raster value of the predictor band  $k$  at pixel location  $x$  and time  $t$ .
- $\Omega$  is the analysis zone used for aggregation (e.g.,  $\Omega_{r1:r2}$  as defined in Eq. (1)).
- $M(x, t) \in \{0, 1\}$  is the validity mask (1 for retained pixels after QA/masking; 0 otherwise).
- $R_j(\cdot)$  is the reduction operator defining statistic  $j$  (e.g., mean, median, percentiles, standard deviation, min–max, sum, count), applied to the set of valid pixels within  $\Omega$ .

This formulation supports both time-collapsed composites (e.g., baseline vs. recent windows and their deltas) and time-indexed monthly composites, while maintaining a stable feature schema under missing-observation months via explicit masking conventions described in Section 2.6.

## 2.8. Pixel-Wise Temporal Feature Construction from Monthly Predictor Stacks

Model 1 compresses monthly predictor stacks into a fixed set of pixel-wise temporal descriptors used for downstream mapping and modelling. For each predictor band  $k$  and pixel  $x$ , descriptors include distributional moments over the available series, a linear trend term estimated over valid observations, windowed means for baseline and recent periods, and a baseline-to-recent change term. All descriptors are computed using validity masking to ensure consistency under missing observations (masked months) and optional AOI masking. The full mathematical specification of the temporal feature vector and the trend estimator is provided in the Supplementary material (equation-compendium table), and is referenced later in the Methodology to avoid repeated cross-referencing.

### 2.9. Model 2: Impact Scoring via Robust Normalization and Percentile Aggregation

Model 2 converts Model 1 predictors into spatially comparable impact scores by: (i) computing grid-cell zonal summaries, (ii) transforming predictor deviations using robust dispersion statistics, (iii) mapping deviations to empirical percentiles to obtain unitless comparability across predictors, and (iv) aggregating predictor percentiles into grouped indices (and a combined index) on a 0–100 scale.

Grid-cell predictor summaries are computed via zonal reduction (Section 2.7; Eq. (7)) using the mean reducer. For each predictor band  $k$  and grid cell  $g$ , robust standardized deviation is computed relative to the distribution across grid cells using the median and median absolute deviation (MAD) Eq. (8):

$$z_k(g) = \frac{|\bar{V}_k(g) - \text{median}_{g'}\{\bar{V}_k(g')\}|}{1.4826 \text{MAD}_{g'}\{\bar{V}_k(g')\}}$$

Where:

- $\bar{V}_k(g)$  = grid-cell zonal mean for predictor  $k$  (computed using Eq. (7) with mean reducer)
- $G_k$  = set of grid cells with finite  $\bar{V}_k(\cdot)$  for predictor  $k$
- $\text{MAD}\{\bar{V}_k\} = \text{median}(|\bar{V}_k - \text{median}(\bar{V}_k)|)$  over  $g' \in G_k$
- 1.4826 scales MAD to be consistent with the standard deviation under normality

Robust deviations are then mapped to a unit interval using the empirical percentile (empirical CDF) across grid cells Eq. (9):

$$p_k(g) = \frac{1}{|G_k|} \sum_{g' \in G_k} I(z_k(g') \leq z_k(g))$$

Where:

- $p_k(g) \in [0,1]$  = percentile rank of grid cell  $g$  for predictor  $k$
- $F_k(\cdot)$  = empirical CDF of  $z_k$  over  $G_k$

Grouped indices are computed as the mean percentile rank across predictors assigned to group  $G$ , scaled to 0–100 Eq. (10):

$$I_G(g) = 100 \cdot \frac{1}{|K_G|} \sum_{k \in K_G} p_k(g)$$

Where:

- $I_G(g) \in [0,100]$  = group-level index for group  $G$  at grid cell  $g$
- $K_G$  = set of predictors assigned to group  $G$  (e.g., land, water, hydrology)

Finally, the combined index is computed as the mean across the set of groups  $S$  used in the analysis Eq. (11):

$$I_{COMB}(g) = \frac{1}{|S|} \sum_{G \in S} I_G(g)$$

Where:

- $I_{COMB}(g) \in [0,100]$  = combined impact-prioritization score
- $S$  = set of included groups (e.g., {LAND, WATER, HYDRO})

### 2.10. Scientific Validation and Triangulation Using Field Sediment Observations

To evaluate whether mapped impact patterns are directionally consistent with independent field evidence, sediment sampling points (Hg and co-measured metals, when available) are used for triangulation. This step does not infer causality; it tests whether field concentrations exhibit spatial gradients that are qualitatively compatible with model-derived scores.

Distance from each sampling location to the mine reference point is computed in a metric projection Eq. (12):

$$d(x) = \frac{1}{1000} \|x - x_m\|_2$$

Where:

- $d(x)$  = distance from sampling location  $x$  to mine reference point  $x_m$  (km)
- $\|\cdot\|_2$  = Euclidean norm in projected coordinates (m); division by 1000 converts to km

Sampling points are then assigned to annular distance classes (e.g., 0–5, 5–10, 10–20 km) for near–far comparisons. Ring-stratified summaries of Hg are computed to support ring-wise reporting, and directional agreement is assessed by relating ring-level Hg summaries to model-derived ring/AOI scores (association tests reported as correlation metrics).

### 2.11. Model 3: Field-Based Triangulation Using Multi-Scale Raster Sampling

Model 3 calibrates the remote-sensing predictor space against independent field observations by extracting multi-scale neighborhood summaries from candidate predictor rasters at each sampling location and fitting a regularized regression model under leave-one-out cross-validation (LOOCV). The goal is not to produce a definitive contaminant surface, but to provide *triangulation*: testing whether remotely sensed and terrain-derived predictors contain structured signal that is directionally consistent with field variability, while maintaining reproducibility through coverage screening, stable feature naming, and fold-internal preprocessing.

#### Multi-scale feature extraction at field locations

For each sampling location  $x_i$  and predictor raster  $V_k$ , neighborhood-aggregated means are computed over circular windows of radius  $r$  (in the raster's native CRS/grid) Eq. (13):

$$\mu_{k,r}(x_i) = \frac{1}{N_{i,k,r}} \sum_{u \in W_r(x_i)} m_k(u) V_k(u)$$

Where:

- $\mu_{k,r}(x_i)$  = neighborhood mean of predictor  $k$  around point  $i$  using radius  $r$
- $W_r(x_i)$  = set of raster pixels  $u$  within radius  $r$  of  $x_i$
- $m_k(u) \in \{0,1\}$  = validity mask (finite, non-nodata)
- $N_{i,k,r} = \sum_{u \in W_r(x_i)} m_k(u)$  = number of valid pixels
- $V_k(u)$  = raster value for predictor  $k$  at pixel  $u$

Local variability is summarized using the neighborhood standard deviation Eq. (14):

$$\sigma_{k,r}(x_i) = \sqrt{\frac{1}{N_{i,k,r}} \sum_{u \in W_r(x_i)} m_k(u) (V_k(u) - \mu_{k,r}(x_i))^2}$$

To represent local gradients, a contrast feature is computed between an inner and outer radius ( $r_1 < r_2$ ) Eq. (15):

$$C_{k,r_1,r_2}(x_i) = \mu_{k,r_1}(x_i) - \mu_{k,r_2}(x_i)$$

#### Predictor screening and dimensionality control

Candidate rasters are retained only if they meet a minimum extraction-coverage requirement across field locations Eq. (16):

$$I_k = I\left(\sum_{i=1}^n I(\mu_{k,r_0}(x_i) \in \mathbb{R}) \geq n\right)$$

Where:

- $I_k \in \{0,1\}$  indicates whether predictor  $k$  passes the coverage screen

- $r_0$  = point-support extraction radius (pixel-scale)
- $n$  = number of field points with valid target measurements
- $n_{\min}$  = minimum required number of valid extractions

Given the high dimensionality of predictors, a fast filter selects the top  $K$  predictors by absolute correlation with the calibration target  $y$  (e.g.,  $\log_{10}(\text{Hg})$  and/or a composite contamination index), computed over available paired observations **Eq. (17)**:

$$K^* = \arg \max_{K, |K|=K_0} \sum_{m \in M} |\text{corr}(X_p, y)|$$

Where:

- $P$  = set of screened predictors after Eq. (16)
- $K^*$  = selected subset of size  $K$
- $X_p$  = feature vector for predictor  $p$  across sampled points (constructed from Eqs. 13–15)
- $\text{corr}(\cdot, \cdot)$  = Pearson correlation computed on pairwise-complete observations

### Cross-validated calibration and significance screening

Out-of-sample performance is estimated using LOOCV. For each point  $i$ , the prediction is generated by a model trained on all other points, with preprocessing (imputation and robust scaling) performed within each training fold **Eq. (18)**:

$$\hat{y}_i = f^{(-i)}(x_i), \quad i=1, \dots, n$$

To test whether observed predictive skill exceeds chance structure, a permutation test is applied by shuffling targets and recomputing LOOCV  $R_2$  across  $B$  permutations **Eq. (19)**:

$$p = \frac{1 + \sum_{b=1}^B I(R_b^2 \geq R_{obs}^2)}{B+1}$$

This module outputs: (i) extracted multi-scale predictor features at field points, (ii) LOOCV predictions for calibration targets, (iii) model-based importance or coefficient summaries for interpretability, and (iv) a saved preprocessing-plus-regressor artifact to enable reproducible reruns under fixed seeds and documented settings.

### 2.12. Model 4: Phase-Timed Financial Costing and Present-Value Screening

Model 4 converts spatial impact scores into a phase-timed present-value (PV) liability profile at grid-cell resolution by: (i) assigning each cell to an implementation phase using ranked score cut-offs; (ii) mapping dominant impact groups to intervention packages and associated bill-of-quantities measures; (iii) discounting one-time capital expenditures (CAPEX) to the start of the assigned phase; (iv) discounting recurring operating expenditures (OPEX) as phase-activated streams; and (v) netting eligible credits on a PV-consistent basis while constraining net costs to be non-negative.

Cells are assigned to implementation phases using score-ranked cut-offs. Let  $\pi_i$  denote the normalized descending rank of the total score  $s_i$  (higher score  $\Rightarrow$  smaller  $\pi_i$ ), and let  $(\tau_1, \tau_2, \tau_3) = (0.10, 0.30, 1.00)$  denote cumulative phase thresholds. The phase assignment is **Eq. (20)**:

$$\text{phase}(i) = \{1, \text{ if } \pi_i \leq \tau_1, 2 \text{ if } \tau_1 < \pi_i \leq \tau_2, 3 \text{ if } \tau_2 < \pi_i \leq \tau_3, \quad (\tau_1, \tau_2, \tau_3) = (0.10, 0.30, 1.00)$$

Where:

- $\text{phase}(i)$  = assigned implementation phase for cell  $i$
- $\pi_i$  = normalized descending rank of  $s_i$  (e.g.,  $N\pi_i = \text{rank}_{\downarrow}(s_i)$ , with  $N$  evaluated cells)
- $\tau_p$  = cumulative phase thresholds (top 10%, top 30%, all cells)

A common discount factor is used throughout Model 4 **Eq. (21)**:

$$DF(t) = \frac{1}{(1+r)^t}$$

Where:

- $DF(t)$  = discount factor at  $t$  years from the reference year

- $r$  = real annual discount rate

One-time intervention costs (CAPEX) are phase-timed to the start of the assigned phase and discounted accordingly. Let  $t_i^{\text{start}}$  denote the start year (in years from the reference year) of the phase assigned to cell  $i$ , and let  $M$  denote the set of one-time measures in the bill of quantities Eq. (22):

$$CAPEX_i^{PV} = DF(t_i^{\text{start}}) \sum_{m \in M} q_{i,m} c_m$$

Where:

- $CAPEX_i^{PV}$  = PV of one-time costs for cell  $i$
- $q_{i,m}$  = quantity of measure  $m$  applied in cell  $i$  (e.g., derived from cell area/length and package rules)
- $c_m$  = unit cost of measure  $m$

Total PV cost and net PV cost (after credits) are computed as follows, with net cost constrained to be non-negative to prevent accounting artefacts when credits exceed costs in a cell or phase Eq. (23):

$$TC_i^{PV} = CAPEX_i^{PV} + OPEX_i^{PV}, \quad NC_i^{PV} = \max(0, TC_i^{PV} - CR_i^{PV})$$

Where:

- $TC_i^{PV}$  = total PV cost for cell  $i$
- $NC_i^{PV}$  = net PV cost for cell  $i$  after credits (bounded below by 0)
- $OPEX_i^{PV}$  = PV of recurring costs (phase-activated; e.g., monitoring and water-related operations where applicable)
- $CR_i^{PV}$  = PV of eligible credits applied to cell  $i$

To keep the main manuscript concise while preserving reproducibility, the explicit stream formulations for (i) phase-activated  $OPEX_i^{PV}$  and (ii) PV-consistent finite credit streams  $CR_i^{PV}$ .

Policy pathway overlays are implemented as additive PV adjustments applied to the portfolio-level sum  $\sum_i NC_i^{PV}$ , with revenue and offset terms treated as negative costs. For Exp. 24.717, the royalty term is parameterized as a minimum 5% take on annual gross sales (“ventas anuales”) and discounted over the PV horizon (see **Supplementary Table 4** for the pathway lever definitions and uncertainty structure).

### 2.13. Model 5: Sensitivity Analysis, Monte Carlo Uncertainty, Exceedance Risk, and 2060 Projections

Model 5 quantifies uncertainty in the phase-timed present-value (PV) liability estimates by propagating uncertainty in key unit-cost drivers through (i) one-way sensitivity screening and (ii) Monte Carlo simulation. Uncertainty is summarized using distributional percentiles of the portfolio net PV, and communicated to decision-makers using exceedance probabilities for policy-relevant budget thresholds. In addition, a reporting-only indexation projection expresses 2026-valued summary metrics in 2060 terms under alternative annual escalation assumptions.

To preserve internal consistency with Model 4, all PV streams in Model 5 use the same discount rate and the same phase activation logic (phase start years and phase durations). For a constant annual cost rate  $a$  that begins at year  $t_0$  (years from the reference year) and persists for  $Y$  years, the PV is Eq. (24):

$$PV(a; t_0, Y) = a \sum_{k=1}^Y \frac{1}{(1+r)^{t_0+k-1}}$$

Where:

- $a$  = annual cost rate (USD·y<sup>-1</sup>)
- $t_0$  = start year of the active phase (years from the reference year)
- $Y$  = number of active years in the phase
- $r$  = real annual discount rate
- $k$  = year index within the active period (1, ..., Y)

Uncertain unit costs are represented using a triangular distribution parameterized by low, central (mode), and high values. For unit-cost item  $m$  and Monte Carlo draw  $b$  Eq. (25):

$$c_m^{(b)} \sim \text{Triangular}(c_m^L, c_m^C, c_m^H), \quad b=1, \dots, B$$

Where:

- $cm(b)$  = sampled unit cost for item  $m$  in draw  $b$
- $c_m^L, c_m^C, c_m^H$  = low, central (mode), and high parameters
- $B$  = number of Monte Carlo draws

For each draw  $bb$ , the portfolio net PV cost is recomputed by evaluating phase-timed CAPEX and phase-activated OPEX under the sampled unit costs and subtracting PV-consistent credits, while enforcing non-negativity at the cell level Eq. (26):

$$NC^{(b)} = \sum_{i=1}^N \max(0, CAPEX_i^{PV}(c^{(b)}) + OPEX_i^{PV}(c^{(b)}) - CR_i^{PV})$$

Where:

- $NC(b)$  = simulated total net PV cost (USD) in draw  $b$
- $i=1, \dots, N$  indexes grid cells
- $c(b)$  = vector of sampled unit costs in draw  $b$
- $CAPEX_i^{PV}(\cdot)$  and  $OPEX_i^{PV}(\cdot)$  follow the Model 4 timing logic (with OPEX streams discounted using Eq. (24))
- $CR_i^{PV}$  = PV credits for cell  $i$  (held fixed when credits are already phase-timed in Model 4)
- $\max(0, \cdot)$  enforces non-negative net costs at the cell level

Exceedance risk for a policy-relevant budget threshold  $T$  is estimated empirically from Monte Carlo samples Eq. (27):

$$\hat{P}(NC > T) = \frac{1}{B} \sum_{b=1}^B I(NC^{(b)} > T)$$

Where:

- $\hat{P}(NC > T)$  = estimated probability that portfolio net PV exceeds  $T$
- $T$  = threshold (USD, PV terms)
- $I(\cdot)$  = indicator function (1 if true; 0 otherwise)

For long-horizon reporting only (not for PV accounting), 2026-valued summary metrics (e.g., mean, P10, P50, P90 of  $\{NC(b)\}$ ) are expressed in 2060 terms using an annual indexation rate  $\gamma$  Eq. (28):

$$NC_{2060}(\gamma) = NC_{2026} (1 + \gamma)^{2060-2026}$$

Where:

- $NC_{2026}$  = selected summary metric expressed in 2026 USD terms
- $NC_{2060}(\gamma)$  = corresponding indexation projection to 2060
- $\gamma$  = assumed annual indexation rate (dimensionless)

Implementation details not essential to the main narrative—such as the full pixel-wise temporal descriptor definitions, the explicit empirical-percentile formulation, and the phase-activated PV stream definitions for recurring costs and credits—are consolidated in Supplementary Table 2 to preserve reproducibility while keeping the main Methods decision-focused.

Model 4 and Model 5 are parameterised using external quantitative anchors and policy levers compiled in Supplementary Tables 3–6. These tables provide (i) Costa Rica-specific credit benchmarks (e.g., PSA schedules) used to construct PV-consistent credit streams, (ii) monitoring tariff anchors used to parameterise recurring OPEX intensities, (iii) mine-water treatment and water-recovery cost envelopes used to define scenario bounds for water-related OPEX (where applied), (iv) inflation/indexation conventions used for consistent long-horizon reporting to 2060, and (v) policy

pathway levers—including the Exp. 24.717 minimum royalty take ( $\geq 5\%$  of annual gross sales), enforcement costs, implementation lags, and residual tail-risk terms—used to implement delta-versus-baseline comparisons and define uncertainty ranges propagated in Model 5.

#### 2.14. Limitations

The proposed workflow should be interpreted as a reproducible, spatially explicit screening and costing framework rather than a definitive contaminant quantification system. First, several predictors are remote-sensing proxies (e.g., vegetation condition, bare soil, SAR backscatter, optical turbidity indices) and hydrology-derived surrogates rather than direct measurements of Hg or dissolved metals; therefore, mapped outputs represent relative disturbance and exposure signals contingent on proxy validity and local process coupling. Second, masking and compositing choices (cloud/shadow filtering, monthly medians, and retention of fully masked periods to preserve band schema stability) can yield uneven temporal support and residual observation bias, while baseline-recent differencing may conflate anthropogenic change with interannual hydroclimatic variability. Third, zonal aggregation across rings, buffers and grid cells introduces scale dependence and modifiable areal unit effects; although national clipping reduces cross-border pixel leakage, truncated outer geometries and boundary-adjacent cells can still generate edge effects that complicate direct comparability across rings. Fourth, hydrology- and riparian-restricted analyses depend on global hydrography products and user-defined thresholds (e.g., upstream-area cutoffs and corridor widths) and may not capture local drainage alterations, fine channels, engineered diversions or seasonal connectivity in small headwaters. Fifth, the scoring and prioritisation logic is inherently relative—robust normalisation, percentile ranking and phase assignment are distribution-dependent and do not represent absolute hazard or risk metrics; transfer to other domains or time windows would require recalibration of thresholds, package rules and weighting assumptions. Sixth, calibration and scientific validation are constrained by sample density, representativeness, temporal alignment and spatial autocorrelation; conventional LOOCV and random splits can overstate generalisation when samples are clustered unless spatial blocking and independent hold-out areas are available. Seventh, the financial and policy modules are assumption-driven: unit costs, package definitions, phase durations, credit eligibility (including PSA-related offsets), discounting and horizons are simplified representations that may diverge from procurement realities, regulatory requirements and implementation constraints, and several policy levers (e.g., illegal inflow reduction effectiveness, leakage, enforcement intensity, royalty basis, tail-risk severity/probability, implementation lag) are scenario-conditional and should be treated as sensitivity parameters rather than point estimates. Eighth, the uncertainty analysis propagates parameterised cost uncertainty only (via unit-cost bounds and the selected Model 5 propagation mode), and does not fully quantify uncertainty from proxy fidelity, hydrography error, masking artifacts, AOI design, behavioural responses, or model-structure alternatives; potential correlations among cost items are also not explicitly modelled. Finally, any 2060 reporting is an indexation-based translation of 2026-valued cost summaries under assumed annual escalation rates and should not be interpreted as a structural forecast of technology evolution, institutional change, land-use trajectories or future contaminant loads.

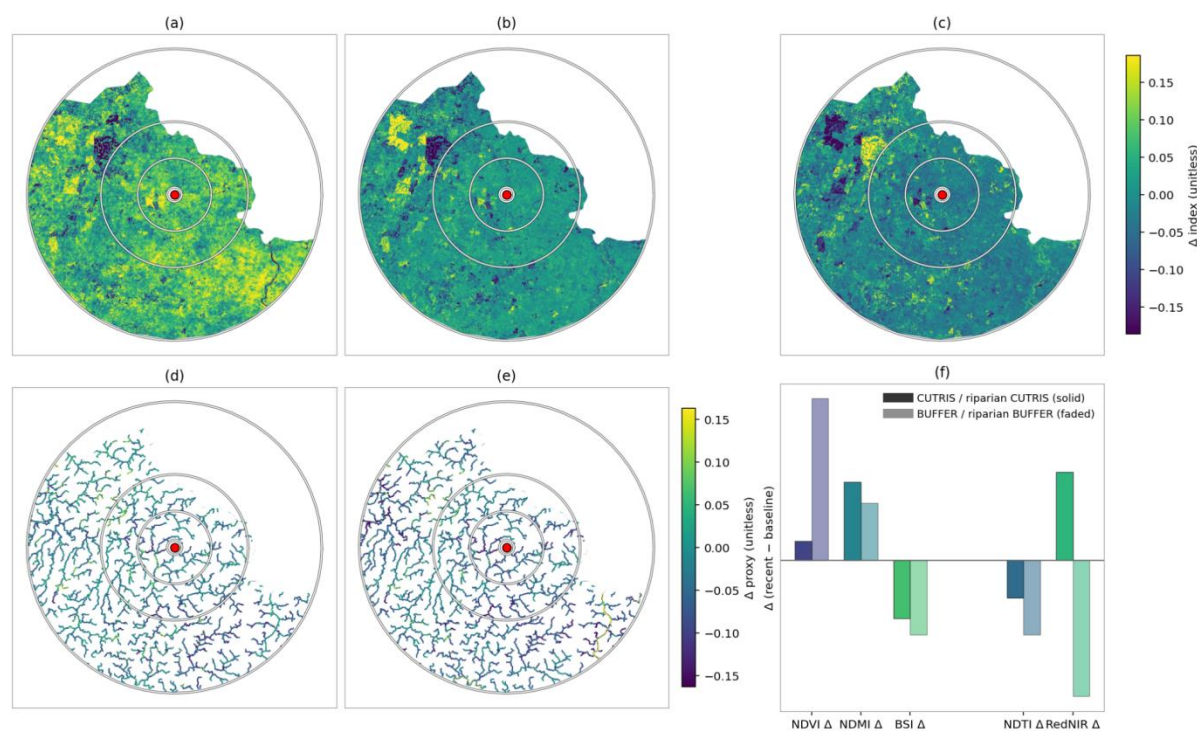
### 3. Results

#### 3.1. Model 1 — Baseline Conditions and Recent-Change Signals

Model 1 characterises baseline-to-recent change signals using pixel-wise  $\Delta$  surfaces defined as recent minus baseline (baseline: January 2019–December 2020; recent: February 2024–January 2025). Across terrestrial disturbance proxies, both Cutris and the 5-km buffer exhibit modest net “greening” signals. In Cutris, mean changes indicate small increases in vegetation indices ( $\Delta$ NDVI = +0.008;  $\Delta$ NDMI = +0.032) alongside a decrease in bare-soil exposure ( $\Delta$ BSI = -0.024). The 5-km buffer shows a stronger NDVI increase ( $\Delta$ NDVI = +0.067) with a smaller NDMI increase ( $\Delta$ NDMI = +0.024) and a

comparable decline in BSI ( $\Delta\text{BSI} = -0.031$ ), consistent with a more pronounced net shift in vegetation-related signals at the buffer scale.

Riparian water proxies display stronger spatial differentiation. Cutris riparian areas show a decrease in NDTI ( $\Delta\text{NDTI} = -0.015$ ) and an increase in RedNIR ( $\Delta\text{RedNIR} = +0.037$ ), whereas the riparian 5-km buffer shows decreases in both NDTI ( $\Delta\text{NDTI} = -0.031$ ) and RedNIR ( $\Delta\text{RedNIR} = -0.056$ ). These contrasting directions indicate heterogeneous riparian proxy responses between the Cutris domain and its surrounding buffer. Figure 1 summarises the spatial  $\Delta$  surfaces and the area-level mean contrasts used as upstream evidence for subsequent impact scoring.



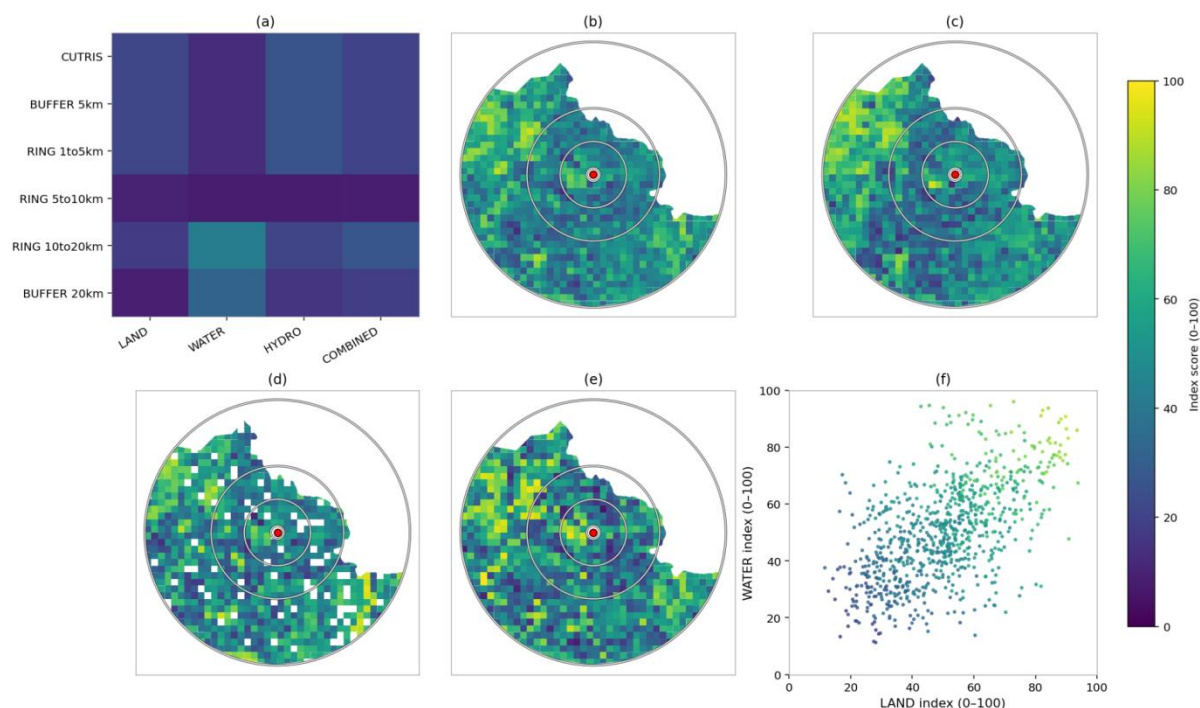
**Figure 1.** | Remote-sensing changes proxies and area-level summaries for the Crucitas mining landscape. (a–c) Pixel-wise change ( $\Delta$ ) in terrestrial disturbance proxies (NDVI, NDMI, BSI), computed as recent (February 2024–January 2025) minus baseline (January 2019–December 2020) and displayed with a diverging scale centred at zero. (d–e) Analogous  $\Delta$  changes in riparian water-quality proxies (NDTI, RedNIR). The Crucitas site location (marker) and concentric distance rings (1, 5, 10, and 20 km) are overlaid on all raster panels. (f) Area-level mean  $\Delta$  values contrasting Cutris versus the 5-km buffer for terrestrial proxies, and riparian Cutris versus the riparian 5-km buffer for water proxies.

Together, these baseline-to-recent  $\Delta$  proxies provide the upstream spatial evidence used to parameterise Model 2 impact scoring and to define subsequent phase-timed costing

### 3.2. Model 2 – Impact Scoring and Prioritization Surfaces

Model 2 constructs 0–100 prioritisation indices at 1-km grid resolution across the Crucitas landscape ( $n = 1,324$  cells), producing component scores for land, water, and hydrology sensitivity and a combined prioritisation index (Figure 2). A total of 923 cells contained sufficient valid input data to be scored; the remaining 401 cells lacked valid pixels across the predictor stack and are therefore best interpreted as no-data (rather than low sensitivity) in spatial visualisations. Across scored cells, the combined index is centred near the mid-scale (median 48.9; mean 50.0) with a pronounced upper tail (95th percentile 76.9; maximum 92.6), indicating a limited set of high-priority hotspots rather than a uniform gradient. Component indices show comparable dispersion (land median 50.8; water median 46.5; hydrology median 49.3), and land and water sensitivity co-vary at the grid-cell scale (Spearman  $\rho \approx 0.58$  where both indices are defined), consistent with spatial co-

occurrence of terrestrial and aquatic vulnerability. The mapped surfaces in Figure 2b–e provide the spatial basis for downstream portfolio design and costing in Models 4–5.

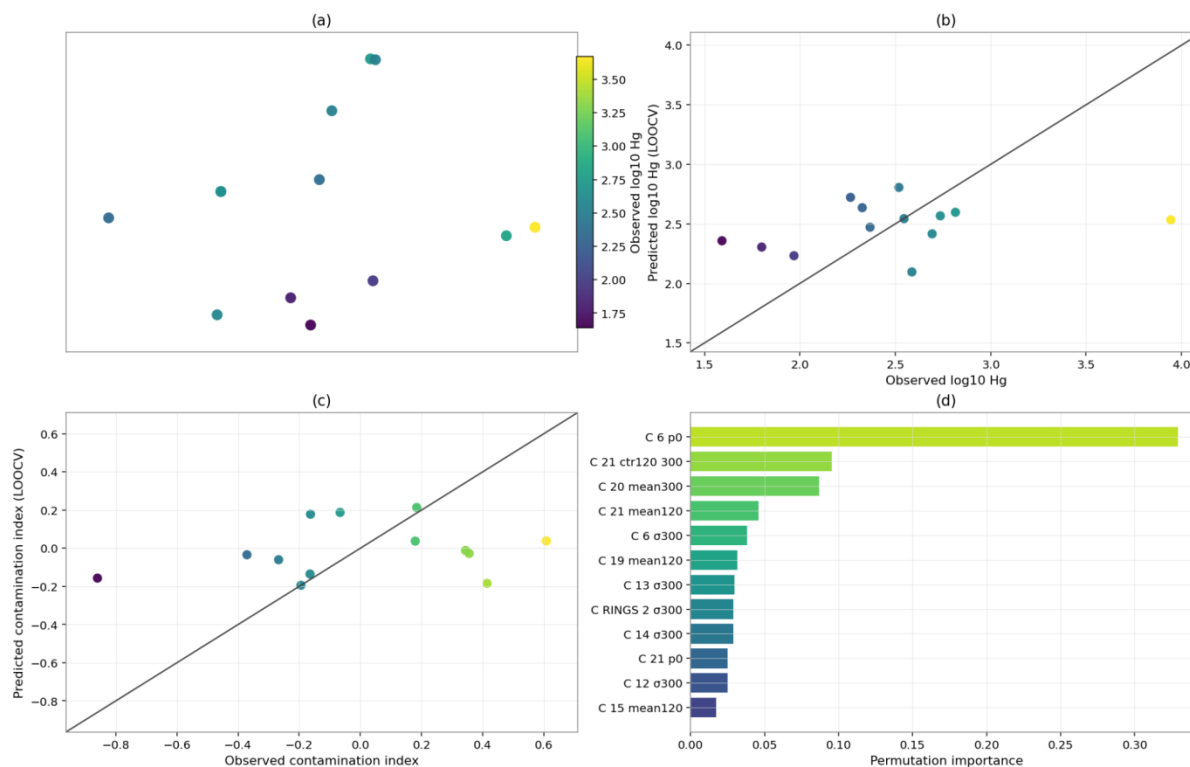


**Figure 2.** | *Spatial prioritisation indices for environmental sensitivity at Crucitas.* (a) AOI-level indices (0–100) summarising land, water, hydrology, and the combined prioritisation score across analysis units. (b–e) Grid-cell maps of the combined index and component indices (land, water, hydrology), all shown on a 0–100 scale. (f) Grid-cell relationship between land and water indices; points are coloured by the combined score, highlighting locations where high prioritisation coincides with jointly elevated land and water sensitivity. *Cells lacking valid predictor coverage are treated as no-data in mapping.*

A broadly mid-range prioritisation field is observed with a limited set of high-score hotspots, alongside moderate co-occurrence of land and water sensitivity across scored grid cells. Cells with missing predictor coverage ( $n = 401$ ) are treated as no-data and should not be interpreted as low-priority areas.

### 3.3. Model 3 – Field-Anchored Screening Performance for Mercury and a Composite Contamination Index

Model 3 assesses whether remotely sensed and terrain-derived predictors recover observed variability in (i) sediment mercury expressed as  $\log_{10}(\text{Hg})$  and (ii) a composite contamination index (ContamIndex) using leave-one-out cross-validation (LOOCV) on the available field dataset ( $n=13$ ). Observed Hg is strongly right-skewed (39–8,800 ppb; median 330 ppb), motivating analysis on the  $\log_{10}$  scale. Predictive skill is limited under this small-sample setting: LOOCV  $R^2$  is 0.0717 for  $\log_{10}(\text{Hg})$  and 0.0459 for ContamIndex, with corresponding errors of MAE = 0.4047 and 0.3039, and RMSE = 0.5331 and 0.3731, respectively. Permutation testing (80 permutations) indicates marginal, non-significant evidence of structure for  $\log_{10}(\text{Hg})$  ( $p=0.0617$ ), consistent with small-sample constraints ( $n=13$ ); permutation-importance rankings suggest spatial context and terrain variables as contributors, but predictive skill remains limited (LOOCV  $R^2 = 0.0717$ ). Figure 3 summarises sampling coverage, LOOCV predicted–observed relationships, and the leading predictors identified by the importance analysis.



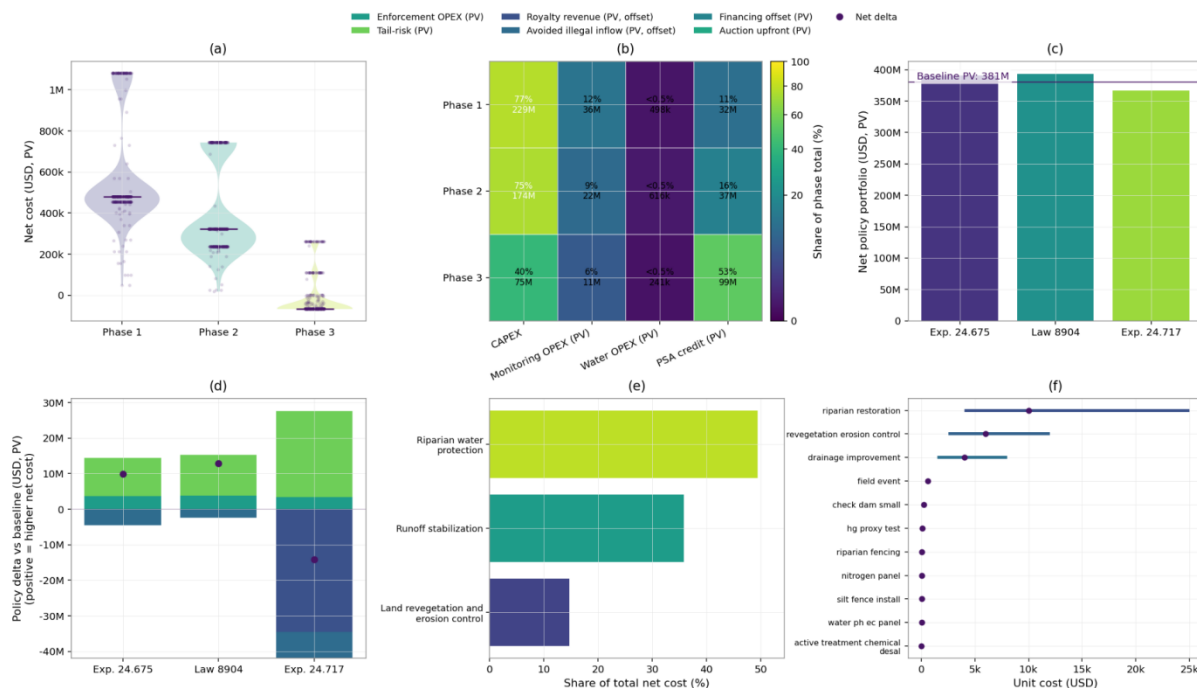
**Figure 3.** | Model 3 field calibration and cross-validation for mercury-related screening. (a) Sediment sampling locations coloured by observed  $\log_{10}(\text{Hg})$ . (b) Leave-one-out cross-validation (LOOCV) for  $\log_{10}(\text{Hg})$  (predicted versus observed). (c) LOOCV for the composite contamination index (predicted versus observed). (d) Permutation-importance ranking of the most influential predictors (shown for the target with the stronger importance signal in the current run).

Observed field concentrations are highly right-skewed, and LOOCV performance indicates limited predictive skill for both  $\log_{10}(\text{Hg})$  and the composite contamination index under the current small-sample setting ( $n=13$ ). Accordingly, the field-calibrated model is treated as screening/triangulation evidence, with the importance analysis highlighting which spatial and terrain covariates most consistently contribute signal in this run.

### 3.4. Model 4 – Deterministic Financial Assurance Costs by Phase and Remediation Package (Baseline Portfolio)

Model 4 converts the prioritisation surface into a phased remediation portfolio across 1,324 costed grid cells, yielding a gross PV liability of US\$548.0 million (10-year PV horizon; 5% discount rate). PSA-related credits total US\$167.3 million PV, reducing the portfolio to US\$380.8 million net PV (–30.5% relative to gross). Gross costs are dominated by remediation CAPEX (US\$477.5 million; 87.1%), while monitoring contributes a material share (US\$69.1 million; 12.6%); the baseline water-response module is comparatively small (US\$1.36 million; 0.25%).

Liabilities are front-loaded in gross terms, with Phase 1 = US\$265.0 million (48.4%), Phase 2 = US\$196.6 million (35.9%), and Phase 3 = US\$86.5 million (15.8%). After PSA credits, net PV is concentrated in Phase 1 (US\$233.3 million) and Phase 2 (US\$159.6 million), while credits are concentrated in Phase 3, where modeled credits exceed costs (–US\$12.1 million net PV), implying a practical zero floor for net financial-assurance liabilities. By intervention package, Riparian and water protection is the largest net contributor (US\$188.1 million; 49.4%), followed by Runoff stabilization (US\$136.5 million; 35.9%) and Land revegetation and erosion control (US\$56.1 million; 14.7%), consistent with PSA credits being concentrated in revegetation measures. Figure 4 synthesises the phase and package decomposition, policy-pathway overlays, and the unit-cost ranges used to parameterise the bill of quantities.



**Figure 4.** | Cost structure of phased remediation and policy pathways at Crucitas (present value). (a) Distribution of grid-cell net costs by implementation phase. (b) Phase-level cost composition (shares of CAPEX, monitoring OPEX, water OPEX and PSA credit; annotations show % and magnitude). (c) Central net PV by policy pathway, with the implied baseline PV shown for reference. (d) Policy delta decomposition relative to baseline (enforcement and tail-risk versus revenue/offset terms), with points indicating the net delta. (e) Top intervention packages by share of total net cost. (f) Unit-cost ranges (low–high with central estimate) used to parameterise the bill of quantities.

### 3.5. Model 5 – Uncertainty, Exceedance Risk, and Policy-Pathway Effects (Monte Carlo)

Model 4 evaluates legislative pathways as deterministic overlays on the baseline net PV portfolio (US\$380.8 million), adding expected enforcement OPEX and tail-risk provisioning and subtracting applicable revenue/offset terms. Policy-adjusted values use the same 10-year PV horizon and 5% discount rate, so differences across pathways reflect incremental policy terms rather than changes in the underlying remediation bill of quantities (Figure 4c–d).

Under the central parameterisation, the auction-based concession pathway (Exp. 24.717; mining permitted) yields a policy-adjusted net PV of US\$366.6 million ( $\Delta = -\text{US}\$14.2$  million vs baseline). The reduction is driven by modeled royalty revenues (PV US\$34.6 million) and avoided illegal-extraction costs (PV US\$7.25 million), which exceed incremental tail-risk (PV US\$24.2 million) and enforcement (PV US\$3.45 million) costs. In this run, the royalty is implemented as a minimum 5% take applied to an annual gross-sales stream; where operational sales forecasts are not specified, the central estimate uses a documented gross-sales proxy (Supplementary Table 4) to preserve internal consistency.

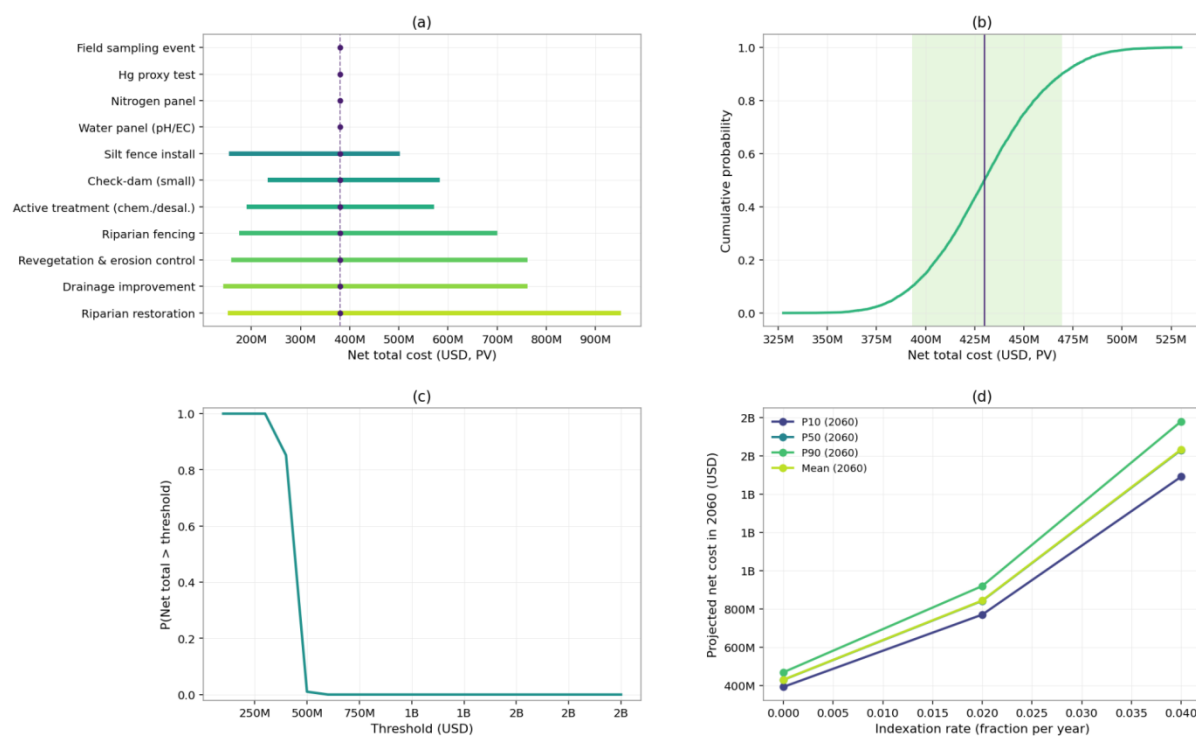
The recovery-focused pathway without industrial mining (Exp. 24.675) increases the policy-adjusted net PV to US\$390.7 million ( $\Delta = +\text{US}\$9.94$  million), reflecting enforcement (PV US\$3.63 million) and tail risk (PV US\$10.9 million) partially offset by avoided illegal-extraction costs (PV US\$4.57 million). The baseline legal-constraint pathway (Law No. 8904) yields US\$393.6 million ( $\Delta = +\text{US}\$12.83$  million), driven by enforcement (PV US\$3.81 million) and tail risk (PV US\$11.4 million) with a smaller offset from avoided illegal-extraction costs (PV US\$2.40 million). Overall, the fiscal ranking in the deterministic central case is governed by the balance between enforceability and residual tail risks versus the presence of a material revenue stream (Figure 4d), while the baseline remediation portfolio is held constant across pathways.

### 3.6. Model 5 – Uncertainty, Exceedance Risk, and Policy-Pathway Effects (Monte Carlo)

Model 5 propagates uncertainty in the cost portfolio by applying stochastic scaling to baseline net present value (PV) totals and, where applicable, to the policy overlay components inherited from Model 4 (enforcement and tail-risk costs versus royalty and other offset terms). For the baseline remediation portfolio, the net PV distribution is right-tailed with P10–P90 = US\$393.1–469.4 million and a central estimate of P50 = US\$429.9 million (mean US\$430.6 million; simulated max US\$530.1 million). Exceedance probabilities indicate that outcomes above US\$400 million are common ( $P = 0.8522$ ), whereas outcomes above US\$500 million are rare ( $P = 0.0101$ ). In this run, Model 5 propagates uncertainty by applying portfolio-level scaling to net PV totals; variance attribution by phase or by individual unit-cost driver is not estimated, so uncertainty is reported for the portfolio aggregate rather than decomposed.

Policy-pathway uncertainty is evaluated by adding a stochastic policy delta to each baseline draw, yielding policy-adjusted net PV bounds for each legislative pathway. Under Exp. 24.717, the policy-adjusted net PV is P10–P90 = US\$377.3–456.4 million with P50 = US\$415.6 million (mean US\$416.5 million), corresponding to a median reduction of ~US\$14.3 million relative to the baseline median; the probability of exceeding US\$400 million falls to 0.7024 and the probability of exceeding US\$500 million falls to 0.0031. Under Exp. 24.675, the policy-adjusted net PV increases to P50 = US\$439.9 million (P10–P90 US\$403.2–479.4 million), with exceedance probabilities  $P(>US\$400 \text{ million}) = 0.9205$  and  $P(>US\$500 \text{ million}) = 0.0233$ . Under Law No. 8904, the policy-adjusted net PV is P50 = US\$442.7 million (P10–P90 US\$406.0–482.4 million), with exceedance probabilities  $P(>US\$400 \text{ million}) = 0.9327$  and  $P(>US\$500 \text{ million}) = 0.0297$ . Across simulations, Exp. 24.717 reduces net PV in ~93.3% of draws (and increases it in ~6.7%), reflecting uncertainty in the balance between enforcement and tail-risk costs and the magnitude of revenue/offset terms.

**Figure 5** summarises portfolio-level uncertainty through the cumulative distribution of net PV cost, the corresponding exceedance curve, a pseudo-one-way sensitivity ranking of unit-cost parameters, and a projection of net PV cost to 2060 under alternative indexation rates.



**Figure 5.** | Model 5 uncertainty and long-horizon projection of net portfolio cost (present value). (a) Pseudo-one-way sensitivity ranking of unit-cost parameters, computed by applying each item's low-to-high ratio (relative to the central value) to the baseline net PV. (b) Monte Carlo cumulative distribution of net total cost, with the P10–P90 interval shaded and the median indicated. (c) Exceedance probability curve showing  $P(\text{Net total} > \text{threshold})$ . (d)

Projection of net total cost to 2060 under alternative annual indexation rates, reported as P10/P50/P90 (and mean where available).

Across scenarios, Exp. 24.717 consistently lowers exceedance risk relative to baseline in most draws, whereas the non-mining pathways shift the distribution upward, increasing exceedance probabilities at common liability thresholds

#### 4. Discussion

This study's primary contribution is an integrated decision pipeline that converts observable environmental signals into (i) spatially explicit prioritisation surfaces, (ii) a phase-timed remediation portfolio, and (iii) present-value (PV) fiscal comparisons of alternative policy pathways under uncertainty. The key implication is that Crucitas is not well represented by either a purely descriptive disturbance narrative or an aggregate "total damages" figure. Liabilities concentrate spatially and temporally, and the fiscal performance of legislative pathways is governed by whether added enforcement and residual-risk obligations are credibly offset by enforceable revenues or other verified offsets.

Interpreting Models 1–3 together supports a clear distinction between robust spatial triage and predictive certainty about contaminant magnitudes. Remote-sensing proxies and multi-criteria indices provide a defensible basis for prioritising where interventions and verification should occur first. By contrast, the field-anchored screening (Model 3) provides structured but limited evidence under small-sample constraints and heterogeneous exposure pathways. This evidentiary architecture is methodologically appropriate for contested landscapes: it prevents over-claiming while still producing operationally actionable outputs. The decision interpretation is therefore "prioritise and validate," not "predict and declare."

Model 4's portfolio logic is as important as the PV magnitude itself. Converting a prioritisation surface into intervention packages and phases makes the liability eligible for budgeting, sequencing, and assurance design. Portfolio decomposition clarifies which components dominate early capital exposure versus long-horizon operating and monitoring burdens and provides a practical accounting rule for policy use: credits can reduce gross totals, but net liabilities should be bounded at zero at the portfolio level to avoid planning artefacts. This portfolio framing also enables transparent comparison of legislative pathways. The policy question is not only what a bill permits, but what it implies for enforceable funding streams, implementation lags, monitoring obligations, and residual provisioning.

Within this accounting logic, pathway ranking reflects a balance between added obligations (enforcement OPEX, governance overhead, residual tail-risk provisioning) and offsets (royalty-like revenues, avoided illegal-extraction damages where plausibly achieved, and other verified financing). Formalisation is often justified on the basis of potential revenues and enforceable repair obligations, contingent on strong oversight and credible institutional controls (Redacción La República, 2023). Fiscal outcomes also depend on concession design and operator quality; weak screening can reduce compliance performance even when headline royalty terms appear attractive (Martínez, 2025). Timing is a first-order determinant of net PV: long-lead legal, technical, and financing steps can prolong interim enforcement and remediation burdens before offsets materialise (Arrieta, 2024).

Model 5 adds decision value by shifting interpretation from deterministic rankings to conditional risk management: under what parameter conditions does a pathway reduce liability, and what is the probability of exceeding policy-relevant thresholds? This perspective is particularly relevant in Crucitas because right-tail drivers—enforcement effectiveness, residual risk severity, and the reliability of any offset stream—are precisely the parameters most exposed to governance slippage. Reporting that illegal extraction activity may be expanding to additional sites underscores why enforcement should be treated as spatially distributed and adaptively dynamic rather than as a one-time control action (Hidalgo, 2025). Operational interventions can suppress capacity in the near

term, but they also motivate treating effectiveness and persistence as uncertain inputs rather than fixed constants (Colindres Lagos, 2025).

A second boundary condition concerns leakage and provenance. If material can be moved, processed elsewhere, and exported under weak traceability, “site-only” remediation portfolios can understate total liabilities or misattribute where costs accrue. Investigative reporting linking illegal supply chains to laundering routes and export flows provides a rationale for treating traceability failure and off-site processing as explicit sensitivity cases, because these mechanisms can shift tail outcomes even when median costs appear stable (Bolaños & Ubaque Calixto, 2025). Relatedly, civil-society position documents emphasizing district-scale footprint expansion and long-lived liabilities are best interpreted as stakeholder-aligned evidence that the debate concerns long-duration risk and governance credibility, rather than as empirical magnitude estimates (Observatorio de Bienes Comunes UCR, 2025). This alignment supports the exceedance-risk framing while preserving a clear distinction between scenario assumptions and measured quantities.

A decision-grade interpretation must also recognize that fiscal-liability accounting operates within a socio-environmental conflict system where legitimacy, inclusion, and institutional capacity condition what is implementable. Comparative scholarship on Costa Rican gold-mining conflicts shows that outcomes are shaped by collective action, legal contestation, and the state’s enforcement and regulatory capacity—constraints that can dominate feasibility even when a pathway appears fiscally favourable on paper (Blanco Obando, 2021). Contested environmental decisions also distribute participation and exposure asymmetrically, highlighting why fiscal rankings should be presented as conditional and complemented by transparent benefit and risk allocation criteria (Rodríguez-Soto, 2025). Mercury risk reduction is similarly mediated through public expectations and multi-level governance roles, reinforcing that enforcement performance, monitoring capacity, and risk communication are policy-dependent levers rather than background assumptions (Campos-Guevara et al., 2022).

The framework relies on remote-sensing proxies of disturbance and hydrologic context rather than direct contaminant concentration surfaces, and Model 3 is constrained by small-sample field data that support triangulation but not predictive mapping. Uncertainty propagation is implemented primarily through unit-cost envelopes; enforcement effectiveness, behavioural adaptation, leakage, and proxy fidelity are treated as scenario assumptions rather than fully stochastic drivers. Spatial boundaries also matter: if processing and disposal are displaced beyond the mapped footprint, system-wide liabilities can exceed “site-only” portfolio totals. Long-horizon indexation and scenario projections should therefore be interpreted as stress tests for fiscal exposure rather than forecasts.

A bounded, decision-oriented conclusion follows. Across all legislative pathways, Crucitas faces substantial remediation obligations requiring credible financing and sequenced implementation. Any fiscal advantage from a mining-allowed pathway is contingent on enforceable and transparent offsets, competent implementation, and credible residual-risk provisioning. Conversely, any non-extractive pathway relying on remediation-linked offsets or institutional finance requires comparable transparency about feasibility, timing, and governance controls. The most immediate value of the framework is not to “settle” the debate, but to clarify which assumptions drive rankings, how uncertainty concentrates in the right tail, and which empirical evidence—expanded field validation, traceability and provenance assessment, and cost engineering—would most reduce decision uncertainty.

## 5. Conclusions

Crucitas faces substantial remediation obligations across legislative pathways, requiring credible financing, transparent sequencing, and explicit treatment of residual risk. The integrated framework translates remote-sensing change signals into a reproducible prioritisation surface, converts that surface into a phase-timed remediation portfolio with PV-consistent accounting, and evaluates policy pathways on a common fiscal and exceedance-risk basis. Portfolio results indicate a large gross PV liability with partial offset from PSA-related credits, while pathway rankings are

driven by enforceability and timing of offsets and by the magnitude of enforcement and tail-risk provisions rather than by pathway labels alone. Under the central parameterisation, Exp. 24.717 reduces net PV relative to baseline through modeled revenues; non-mining pathways increase net PV through enforcement and residual-risk terms. Under uncertainty, Exp. 24.717 reduces the probability of exceeding policy-relevant thresholds in most draws, whereas non-mining pathways shift the liability distribution upward.

The results should be interpreted as conditional accounting, not a definitive forecast. Decision relevance is maximised when load-bearing assumptions are made testable: enforcement effectiveness and persistence, traceability and leakage, credibility of revenue/offset collection, and tail-risk severity. Priority evidence to reduce decision uncertainty includes expanded field sampling designed for spatial representativeness, supply-chain and provenance assessment, and site-specific engineering cost studies capable of narrowing unit-cost envelopes. With these additions, the same pipeline can support periodic re-ranking of intervention priorities and policy-pathway performance as conditions and governance constraints evolve.

**Supplementary Materials:** The following supporting information can be downloaded at the website of this paper posted on Preprints.org.

**Author Contributions (CRediT):** **Andrea Navarro Jiménez:** Conceptualization, Methodology, Data curation, Software, Formal analysis, Visualization, Writing – original draft, Writing – review & editing.

**Data Availability Statement:** **Navarro Jiménez, Andrea. (2026).** *Decision-grade risk and cost mapping for illegal gold mining at Crucitas, Costa Rica: prioritisation, phased remediation portfolios, and uncertainty-aware policy ranking.* Mendeley Data, V1. <https://doi.org/10.17632/7dxfv33tfm.1>.

**Conflicts of Interest:** The author declares no competing interests.

**Ethics Statement:** This research did not involve human participants, human biological materials, animals, or personal data. All inputs were derived from aggregated public statistics and open-access geospatial datasets. Therefore, ethical approval was not required.

**Declaration of Generative AI and AI-Assisted Technologies in the Manuscript Preparation Process:** During the preparation of this work, the author used ChatGPT (OpenAI) to improve readability, grammar, and phrasing. After using this tool, the author reviewed and edited the content as needed and took full responsibility for the content of the published article.

## References

- Arrieta, E. (2024, July 30). Explotación de oro de Crucitas es un proyecto que duraría más de 5 años en arrancar [Article in Spanish]. *La República*. <https://www.larepublica.net/noticia/explotacion-de-oro-de-crucitas-es-un-proyecto-que-duraria-mas-de-5-anos-en-arrancar>
- Asamblea Legislativa de la República de Costa Rica. (2024). Proyecto de ley: Expediente 24.577 (texto base) [PDF]. <https://d1qqtien6gys07.cloudfront.net/wp-content/uploads/2024/09/24577.pdf>
- Asamblea Legislativa de la República de Costa Rica. (n.d.). Proyecto de ley, Expediente N.º 24.667 (texto base) [PDF]. <https://d1qqtien6gys07.cloudfront.net/wp-content/uploads/2024/10/24667.pdf>
- Asamblea Legislativa de la República de Costa Rica. (n.d.). Proyecto de ley, Expediente N.º 24.717 (texto base) [PDF]. <https://d1qqtien6gys07.cloudfront.net/wp-content/uploads/2024/10/24717.pdf>
- Asia-Pacific Economic Cooperation (APEC) Mining Task Force. (2018). *Mine closure: Checklist for governments (February 2018)*. APEC Secretariat. [https://www.apec.org/docs/default-source/Publications/2018/3/Mine-Closure-Checklist-for-Governments/218\\_MTF\\_Mine-Closure\\_Checklist-for-Governments.pdf](https://www.apec.org/docs/default-source/Publications/2018/3/Mine-Closure-Checklist-for-Governments/218_MTF_Mine-Closure_Checklist-for-Governments.pdf)
- Astorga, Y. (2009, February 1). Inconveniencia de la minería en Crucitas. *Revista Ambientico*, (185), 8–9. [https://www.ambientico.una.ac.cr/wp-content/uploads/tainacan-items/5/19329/185\\_8-9.pdf](https://www.ambientico.una.ac.cr/wp-content/uploads/tainacan-items/5/19329/185_8-9.pdf)
- Banco Central de Costa Rica (BCCR). (2026, January 20). Tipo de cambio anunciado en ventanilla. <https://gee.bccr.fi.cr/IndicadoresEconomicos/Cuadros/frmConsultaTCVentanilla.aspx>

- Biamonte, G. (2011, March 1). Proyecto minero Crucitas: Lo que sucedió y lo que pudo suceder. *Revista Ambientico*, (210), 3–4. [https://www.ambientico.una.ac.cr/wp-content/uploads/tainacan-items/5/21760/210\\_3-4.pdf](https://www.ambientico.una.ac.cr/wp-content/uploads/tainacan-items/5/21760/210_3-4.pdf)
- Blanco Obando, E. E. (2021). Megaminería aurífera, conflicto ambiental y acción colectiva: características y relaciones para el caso de Costa Rica. *Revista Estudios*, (43), 489–511. <https://doi.org/10.15517/re.v0i43.49339>
- Bocoum, B., Hund, K. L., Tadevosyan, N., McMahon, G. J. R., Floroiu, R., Minasyan, G., & Wang, Q. (2021). *Mine closure: A toolbox for governments*. World Bank. <https://documents1.worldbank.org/curated/en/278831617774355047/pdf/Mine-Closure-A-Toolbox-for-Governments.pdf>
- Bolaños, E. A., & Ubaque Calixto, C. (2025, November 16). La multinacional del oro que abrió las puertas a la minería ilegal en Costa Rica [Article in Spanish]. *Divergentes*. <https://www.divergentes.com/multinacional-del-oro-abrio-las-puertas-mineria-ilegal-tierras-protegidas-costa-rica/>
- Brock, D., Slight, M., & McCombe, C. (2019). *Financial concepts for mine closure: Information document*. International Council on Mining and Metals (ICMM). <https://www.icmm.com/en-gb/guidance/environmental-stewardship/2019/financial-concepts-for-mine-closure>
- Brown, C. F., Brumby, S. P., Guzder-Williams, B., Birch, T., Hyde, S. B., Mazzariello, J., Czerwinski, W., Pasquarella, V. J., Haertel, R., Ilyushchenko, S., Schwehr, K., Weisse, M., Stolle, F., Hanson, C., Guinan, O., Moore, R., & Tait, A. M. (2022). Dynamic World: Near real-time global 10 m land use land cover mapping. *Scientific Data*, 9, 251. <https://doi.org/10.1038/s41597-022-01307-4>
- Bureau of Labor Statistics. (2017). Historical CPI-U (2017-10) [PDF]. <https://www.bls.gov/cpi/tables/historical-cpi-u-201710.pdf>
- Bureau of Labor Statistics. (n.d.). Consumer Price Index historical tables for U.S. city average (CPI-U). [https://www.bls.gov/regions/mid-atlantic/data/consumerpriceindexhistorical\\_us\\_table.htm](https://www.bls.gov/regions/mid-atlantic/data/consumerpriceindexhistorical_us_table.htm)
- Campos-Guevara, O., Camacho-Álvarez, M. M., Retana-Alvarado, D. A., & Quirós-Gómez, L. D. (2022). Mercurio: Percepción centroamericana sobre su riesgo y el manejo esperado por actores del eje hogar-comunidad-país [Mercury: Central American perception of its risk and the expected management by actors of the household–community–country axis]. *Revista Latinoamericana de Educación Científica, Crítica y Emancipadora (LadECiN)*, 1(2), 1–26. <https://doi.org/10.5281/zenodo.8077726>
- Center for International Earth Science Information Network (CIESIN), Columbia University. (2018). Gridded Population of the World, Version 4.11 (GPWv4.11): Population count [Data set]. NASA Socioeconomic Data and Applications Center (SEDAC). <https://doi.org/10.7927/H4JW8BX5>
- Cerdas, D. (2015, November 24). Tribunal ordena pagar \$6,4 millones por los daños ambientales de minera en Cutris. *La Nación*. <https://www.nacion.com/el-pais/salud/tribunal-ordena-pagar-64-millones-por-los-danos-ambientales-de-minera-en-cutris/Q3XYZREOVZGKJI2RYZTOSSCJVY/story/>
- Chambers, D. M. (2024). Net present value calculations for mining post-closure financial assurance. *Mine Water and the Environment*, 43, 511–515. <https://doi.org/10.1007/s10230-024-00995-1>
- Colindres Lagos, S. (2025, December 12). MSP neutraliza 34 túneles de minería ilegal en operativo en Crucitas [Article in Spanish]. *Despertar.cr*. <https://www.despertar.cr/articulo/nacionales/msp-neutraliza-34-tuneles-mineria-ilegal-operativo-crucitas/20251212145407011882.html>
- Copernicus/ESA. (n.d.). Sentinel-2 SR Harmonized (COPERNICUS/S2\_SR\_HARMONIZED) [Data set]. Google Earth Engine Data Catalog.
- Costa Rica, Sistema Costarricense de Información Jurídica (SCIJ). (2010). Ley N.º 8904. [https://pgrweb.go.cr/scij/Busqueda/Normativa/Normas/nrm\\_texto\\_completo.aspx?param1=NRTC&nValor1=1&nValor2=68916&nValor3=82279&strTipM=TC](https://pgrweb.go.cr/scij/Busqueda/Normativa/Normas/nrm_texto_completo.aspx?param1=NRTC&nValor1=1&nValor2=68916&nValor3=82279&strTipM=TC)
- Delfino, D. (2025, December 4). Investigación internacional detalla ampliación de la minería ilegal en Crucitas y cuestiona exportaciones de oro del país [Article in Spanish]. *Delfino.cr*. <https://delfino.cr/2025/12/investigacion-internacional-detalla-ampliacion-de-la-mineria-ilegal-en-crucitas-y-cuestiona-exportaciones-de-oro-del-pais>
- Delfino.cr. (n.d.). Asamblea: Expediente 24.717. <https://delfino.cr/asamblea/proyecto/24717>
- Delfino.cr. (n.d.). Asamblea: Proyecto de ley, Expediente 24.577. <https://delfino.cr/asamblea/proyecto/24577>

- Department of Mines, Industry Regulation and Safety (DMIRS). (2023). *Mine closure plan guidance – How to prepare in accordance with Part 1 of the Statutory Guidelines for Mine Closure Plans* (Version 4.0). Government of Western Australia. [https://www.wa.gov.au/system/files/2025-11/preparing\\_mine\\_closure\\_plans.pdf](https://www.wa.gov.au/system/files/2025-11/preparing_mine_closure_plans.pdf)
- Drusch, M., Del Bello, U., Carlier, S., Colin, O., Fernandez, V., Gascon, F., Hoersch, B., Isola, C., Laberinti, P., Martimort, P., Meygret, A., Spoto, F., Sy, O., Marchese, F., & Bargellini, P. (2012). Sentinel-2: ESA's optical high-resolution mission for GMES operational services. *Remote Sensing of Environment*, 120, 25–36. <https://doi.org/10.1016/j.rse.2011.11.026>
- Earthworks. (2018). Zortman–Landusky expenditures (reclamation and water treatment) [PDF]. <https://earthworks.org/assets/uploads/2018/07/Zortman-Expenditures.pdf>
- Esquivel Solano, N., & Rivera, E. (2024, September 10). Abangares: Washing the illegal gold from Crucitas. *The Voice of Guanacaste*. <https://vozdeguanacaste.com/en/abangares-washing-illegal-gold-crucitas/>
- European Union/ESA/Copernicus. (n.d.). Sentinel-1 SAR GRD: C-band Synthetic Aperture Radar Ground Range Detected, log scaling (COPERNICUS/S1\_GRD) [Data set]. Google Earth Engine Data Catalog. Retrieved January 21, 2026.
- Federal Reserve. (n.d.). Statement on longer-run goals and monetary policy strategy. <https://www.federalreserve.gov/monetarypolicy/strategy.htm>
- Funk, C., Peterson, P., Landsfeld, M., Pedreros, D., Verdin, J., Shukla, S., Husak, G., Rowland, J., Harrison, L., Hoell, A., & Michaelsen, J. (2015). The Climate Hazards Infrared Precipitation with Stations—A new environmental record for monitoring extremes. *Scientific Data*, 2, 150066. <https://doi.org/10.1038/sdata.2015.66>
- Gazel, E., Alfaro, A. J., Arauz, A., Sánchez-Murillo, R., Alfaro, A., & Murillo, S. (2019). Contaminación con mercurio y drenaje ácido causada por la minería ilegal en Crucitas [Report]. [https://d11qqtien6gys07.cloudfront.net/wp-content/uploads/2019/01/Informe\\_Contaminacion-en-Crucitas-Mineria-ilegal.pdf](https://d11qqtien6gys07.cloudfront.net/wp-content/uploads/2019/01/Informe_Contaminacion-en-Crucitas-Mineria-ilegal.pdf)
- Gorelick, N., Hancher, M., Dixon, M., Ilyushchenko, S., Thau, D., & Moore, R. (2017). Google Earth Engine: Planetary-scale geospatial analysis for everyone. *Remote Sensing of Environment*, 202, 18–27. <https://doi.org/10.1016/j.rse.2017.06.031>
- Government Accountability Office. (2001). *EPA's expenditures to clean up the Bunker Hill Superfund Site* (GAO-01-431R). <https://www.gao.gov/products/gao-01-431r>
- Hansen, M. C., Potapov, P. V., Moore, R., Hancher, M., Turubanova, S. A., Tyukavina, A., Thau, D., Stehman, S. V., Goetz, S. J., Loveland, T. R., Kommareddy, A., Egorov, A., Chini, L., Justice, C. O., & Townshend, J. R. G. (2013). High-resolution global maps of 21st-century forest cover change. *Science*, 342(6160), 850–853. <https://doi.org/10.1126/science.1244693>
- Hansen/UMD/Google/USGS/NASA. (n.d.). Hansen Global Forest Change v1.11 (2000–2023) (UMD/hansen/global\_forest\_change\_2023\_v1\_11) [Data set; deprecated]. Google Earth Engine Data Catalog. Retrieved January 21, 2026.
- Hattingh, R., Stevens, R., & Bliss, M. (2021). *Global review: Financial assurance governance for the post-mining transition*. IISD/IGF. <https://www.iisd.org/system/files/2021-09/financial-assurance-governance-for-post-mining-transition.pdf>
- Hattingh, R., Stevens, R., & Bliss, M. (2021). *Global review: Financial assurance governance for the post-mining transition*. International Institute for Sustainable Development. <https://www.iisd.org/system/files/2021-09/financial-assurance-governance-for-post-mining-transition.pdf>
- Hidalgo, K. (2025, October 15). Vecinos descubren 20 nuevos puntos de extracción ilegal de oro tomados por coligalleros en San Carlos [Article in Spanish]. *AmeliaRueda.com*. [https://ameliarueda.com/noticia/vecinos-descubren-nuevos-puntos-extraccion-ilegal-oro-san-carlos-noticias-costa-rica#google\\_vignette](https://ameliarueda.com/noticia/vecinos-descubren-nuevos-puntos-extraccion-ilegal-oro-san-carlos-noticias-costa-rica#google_vignette)
- Intergovernmental Forum on Mining, Minerals, Metals and Sustainable Development. (2019). *Mine closure: Checklist for governments*. [https://www.igfmining.org/wp-content/uploads/2019/04/218\\_MTF\\_Mine-Closure\\_Checklist-for-Governments-1.pdf](https://www.igfmining.org/wp-content/uploads/2019/04/218_MTF_Mine-Closure_Checklist-for-Governments-1.pdf)
- Jiménez, A. (2024, October 3). Gobierno presenta proyecto para permitir la minería en Crucitas: el Estado recibiría 5% de ganancias. *El País (Costa Rica)*. <https://www.elpais.cr/2024/10/03/gobierno-presenta-proyecto-para-permitir-la-mineria-en-crucitas-el-estado-recibiria-5-de-ganancias/>

- La Nación. (2012, August 8). Daño ambiental en Crucitas fue valorado en \$10,4 millones. <https://www.nacion.com/el-pais/servicios/dano-ambiental-en-crucitas-fue-valorado-en-104-millones/6A2ST7YOMBA7HFSWQ5XPTPKOUM/story/>
- Madrigal, L. M. (2024, October 31). Presentan proyecto de ley para recuperar ambientalmente la zona impactada por minería ilegal en Crucitas. *Delfino.cr*. <https://delfino.cr/2024/10/presentan-proyecto-de-ley-para-recuperar-ambientalmente-la-zona-impactada-por-mineria-ilegal-en-crucitas>
- Martínez, A. (2024, November 25). Cuatro proyectos pretenden intervenir Crucitas: ¿Qué proponen? [Article in Spanish]. *Delfino.cr*. <https://delfino.cr/2024/11/cuatro-proyectos-pretenden-intervenir-crucitas-que-proponen>
- Martínez, A. (2025, October 16). Geólogos apoyan proyecto de minería en Crucitas, pero se oponen a modelo de subasta propuesto por el Ejecutivo [Article in Spanish]. *Delfino.cr*. <https://delfino.cr/2025/10/geologos-apoyan-proyecto-de-mineria-en-crucitas-pero-se-oponen-a-modelo-de-subasta-propuesto-por-el-ejecutivo>
- Maus, V., Giljum, S., da Silva, D. M., Gutschlhofer, J., da Rosa, R. P., Luckeneder, S., Gass, S. L. B., Lieber, M., & McCallum, I. (2022). An update on global mining land use. *Scientific Data*, 9, 433. <https://doi.org/10.1038/s41597-022-01547-4>
- Ministerio de Agricultura y Ganadería (MAG). (2007). Manual de instalación de barreras con geotextil “silt fence” para la medición de la erosión en parcelas experimentales [PDF]. <https://www.mag.go.cr/bibliotecavirtual/P36-2565.pdf>
- Ministerio de Ambiente y Energía (MINAE), & Fondo Nacional de Financiamiento Forestal (FONAFIFO). (2025, October 8). Resolución R-570-2025-MINAE (PSA 2025–2026): Actividades y montos de pago (Alcance N.º 130 a La Gaceta N.º 188) [PDF]. [https://www.fonafifo.go.cr/media/4642/alcance-n-130-a-la-gaceta-n-188\\_r-570-2025-minae.pdf](https://www.fonafifo.go.cr/media/4642/alcance-n-130-a-la-gaceta-n-188_r-570-2025-minae.pdf)
- Monge, G., & Chassot, O. (2009, February 1). Minería en Crucitas y conservacionismo tico. *Revista Ambientico*, (185), 3–5. [https://www.ambientico.una.ac.cr/wp-content/uploads/tainacan-items/5/19301/185\\_3-5.pdf](https://www.ambientico.una.ac.cr/wp-content/uploads/tainacan-items/5/19301/185_3-5.pdf)
- NASA Jet Propulsion Laboratory. (2020). NASADEM merged DEM global 1 arc second V001 [Data set]. NASA EOSDIS Land Processes DAAC. [https://doi.org/10.5067/MEaSURES/NASADEM/NASADEM\\_HGT.001](https://doi.org/10.5067/MEaSURES/NASADEM/NASADEM_HGT.001)
- Observatorio de Bienes Comunes (Universidad de Costa Rica). (2025, March 17). Expediente legislativo 24.717: Crucitas entre el Oro y la Naturaleza: ¿Qué Camino Elegirá Costa Rica? [Blog post in Spanish]. *Observatorio de Bienes Comunes*. <https://bienescomunes.fcs.ucr.ac.cr/expediente-legislativo-24-717-crucitas-entre-el-oro-y-la-naturaleza-que-camino-elegira-costarica/>
- Pekel, J.-F., Cottam, A., Gorelick, N., & Belward, A. S. (2016). High-resolution mapping of global surface water and its long-term changes. *Nature*, 540(7633), 418–422. <https://doi.org/10.1038/nature20584>
- Pomareda García, F. (2025, June 18). Propuesta de Gobierno abre puertas a explotar oro a cielo abierto en un territorio mayor al proyecto de Crucitas [Article in Spanish]. *Semanario Universidad*. <https://semanariouniversidad.com/pais/propuesta-de-gobierno-abre-puertas-a-explotar-oro-a-cielo-abierto-en-un-territorio-mayor-al-proyecto-de-crucitas/>
- Procuraduría General de la República (PGR), Sistema Costarricense de Información Jurídica (SCIJ). (n.d.). Lista oficial de precios mínimos de pruebas de laboratorio (incluye “Mercurio en sangre”). [https://pgrweb.go.cr/scij/Busqueda/Normativa/Normas/nrm\\_texto\\_completo.aspx?nValor1=1&nValor2=92889](https://pgrweb.go.cr/scij/Busqueda/Normativa/Normas/nrm_texto_completo.aspx?nValor1=1&nValor2=92889)
- Redacción La República. (2023, August 31). Costa Rica recibirá grandes ventajas al explotar la mina de Crucitas de forma inteligente: Giorgio Murillo [Article in Spanish]. *La República*. <https://www.larepublica.net/noticia/costa-rica-recibiria-grandes-ventajas-al-explotar-la-mina-de-crucitas-de-forma-inteligente-giorgio-murillo>
- Responsible Jewellery Council (RJC). (2013). (COP 40) Mine rehabilitation and closure [Standards guidance PDF]. [https://www.responsiblejewellery.com/wp-content/uploads/RJC\\_Standards\\_Guidance\\_2013\\_eng\\_Provision\\_40.pdf](https://www.responsiblejewellery.com/wp-content/uploads/RJC_Standards_Guidance_2013_eng_Provision_40.pdf)
- Rodríguez, E. (2024, October 15). Diputada propone un “geoparque minero” en Crucitas. *El Observador*. <https://observador.cr/diputada-propone-un-geoparque-minero-en-crucitas/>

- Rodríguez-Soto, J. A. (2025). Rethinking socio-ecological relations from inclusion and exclusion: A new approach to socio-environmental conflicts. *Journal of Sustainable Development*, 18(6), 119–132. <https://doi.org/10.5539/jsd.v18n6p119>
- SRK Consulting (U.S.) Inc., & World Bank. (2021). *Mine closure: A toolbox for governments*. World Bank. <https://documents1.worldbank.org/curated/en/278831617774355047/pdf/Mine-Closure-A-Toolbox-for-Governments.pdf>
- State of Queensland, Department of Environment, Science and Innovation. (2023). Estimated rehabilitation cost under the Environmental Protection Act 1994 (ESR/2018/4425) [Guideline PDF]. [https://www.des.qld.gov.au/policies?a=272936%3Apolicy\\_registry%2Frs-gl-erc-ep-act.pdf](https://www.des.qld.gov.au/policies?a=272936%3Apolicy_registry%2Frs-gl-erc-ep-act.pdf)
- State of Queensland. (2025). Financial assurance for resource activities. *Business Queensland*. <https://www.business.qld.gov.au/running-business/environment/licences-permits/rehabilitation/resource-activities>
- Thisani, S. K., Von Kallon, D. V., & Byrne, P. (2021). Review of remediation solutions for acid mine drainage using the modified Hill framework. *Sustainability*, 13(15), 8118. <https://doi.org/10.3390/su13158118>
- Torres, R., Snoeij, P., Geudtner, D., Bibby, D., Davidson, M., Attema, E., Potin, P., Rommen, B., Floury, N., Brown, M., Navas-Traver, I., Deghaye, P., Duesmann, B., Rosich, B., Miranda, N., Bruno, C., L'abbate, M., Croci, R., Pietropaolo, A., ... Closa, J. (2012). GMES Sentinel-1 mission. *Remote Sensing of Environment*, 120, 9–24. <https://doi.org/10.1016/j.rse.2011.05.028>
- United Nations Development Programme (UNDP). (2018). Extracting good practices: Step 07 – Closure [PDF]. <https://www.undp.org/sites/g/files/zskgke326/files/publications/UNDP-MINING%20Step%2007.pdf>
- Universidad de Costa Rica (UCR), Centro de Investigaciones Agronómicas (CIA), Laboratorio de Suelos y Foliare. (2024). Tarifas – LSF – colones [PDF]. <https://cia.ucr.ac.cr/sites/default/files/2024-06/TARIFAS%20-%20LSF%20-%20colones.pdf>
- Yamazaki, D., Ikeshima, D., Sosa, J., Bates, P. D., Allen, G. H., & Pavelsky, T. M. (2019). MERIT Hydro: A high-resolution global hydrography map based on latest topography datasets. *Water Resources Research*, 55(6), 5053–5073. <https://doi.org/10.1029/2019WR024873>

**Disclaimer/Publisher's Note:** The statements, opinions and data contained in all publications are solely those of the individual author(s) and contributor(s) and not of MDPI and/or the editor(s). MDPI and/or the editor(s) disclaim responsibility for any injury to people or property resulting from any ideas, methods, instructions or products referred to in the content.