

Hypothesis

Not peer-reviewed version

Carnivore Diet as Regenerative Immunotherapy for Inflammatory Bowel Disease: Literature Review, A Novel Hypothesis and Experimental Design

[Leif Gerrit Keferstein](#) *

Posted Date: 2 September 2024

doi: 10.20944/preprints202409.0108.v1

Keywords: carnivore diet; ketogenic diet; inflammatory bowel disease; meat



Preprints.org is a free multidiscipline platform providing preprint service that is dedicated to making early versions of research outputs permanently available and citable. Preprints posted at Preprints.org appear in Web of Science, Crossref, Google Scholar, Scilit, Europe PMC.

Copyright: This is an open access article distributed under the Creative Commons Attribution License which permits unrestricted use, distribution, and reproduction in any medium, provided the original work is properly cited.

Hypothesis

Carnivore Diet as Regenerative Immunotherapy for Treating Inflammatory Bowel Disease: Literature Review, a Novel Hypothesis and Experimental Design

Leif Gerrit Keferstein

Affiliation: gerrit.keferstein@mojo-institut.de

Abstract: The purpose of this paper is to evaluate the possible application of a therapeutic carnivore diet regimen in the treatment of chronic inflammatory bowel disease (IBD). Based on current research and anecdotal reports, we hypothesized that the diet might potentially exhibit both anti-inflammatory and microbiome-modulating properties salutary to the IBD patient population. Our hypothesis demands comprehensive clinical validation. Therefore, in this paper, we review theories on ketogenic and carnivore diets, discussing their immunomodulatory effects and propose an experimental study to test the feasibility, safety, and clinical efficacy of the carnivore diet for IBD treatment.

Keywords: carnivore diet; ketogenic diet; inflammatory bowel disease; meat

Introduction

A carnivore diet consists of only animal-based products: meat, fish, eggs, and animal fats. It has been anecdotally attributed to a number of health benefits, including improved digestion, weight loss, and reduced inflammation. Preliminary evidence and personal testimony show that it may be effective in managing the symptoms of chronic IBDs. It is hypothesized that the carnivorous diet might have regenerative immunotherapeutic effects with the potential of inducing the resolution of IBD, having modes of action shared with, but not being exclusive to, the ketogenic diets. Our goal is to present best available evidence, formulate a hypothesis and provide an experimental framework for its clinical validation.

Ketogenic Diet as Regenerative Immunotherapy

The ketogenic diet (KD) is a high-fat, very low-carbohydrate diet (VLCKD) that has been shown to induce a metabolic state similar to that of fasting, which stimulates the synthesis of ketone bodies in the liver. It has shown clinical efficacy in drug-resistant epilepsy (Martin-McGill et al., 2020, Sourbron et al., 2020, and Kossoff et al., 2021) and displays promising potential in the treatment of psychiatric (Needham et al., 2023) and neurodegenerative diseases (Bohnen et al., 2023); it is now being studied with respect to metabolic and inflammatory conditions (Toth et al., 2016). Interestingly, KD regulates the immune response by virtue of lowered pro-inflammatory cytokine levels, Th1/Th2 balance, and pathways like the NLRP3 inflammasome (Srivastava et al., 2023). In an interesting manner, KD promotes the growth of colonic short-chain fatty acid-producing bacteria with an eventual effect on modulating gene expressions that regulate tissue inflammation. Of particular importance is this finding in the context of dysbiosis, which is highly prevalent in IBD patients (Kaur et al., 2021). Ketone bodies were even able to directly regulate stem cell activity and control gene expression post-transcriptionally leading to improved intestinal regenerative capacity (Anderson et al., 2023, Cheng et al., 2019).

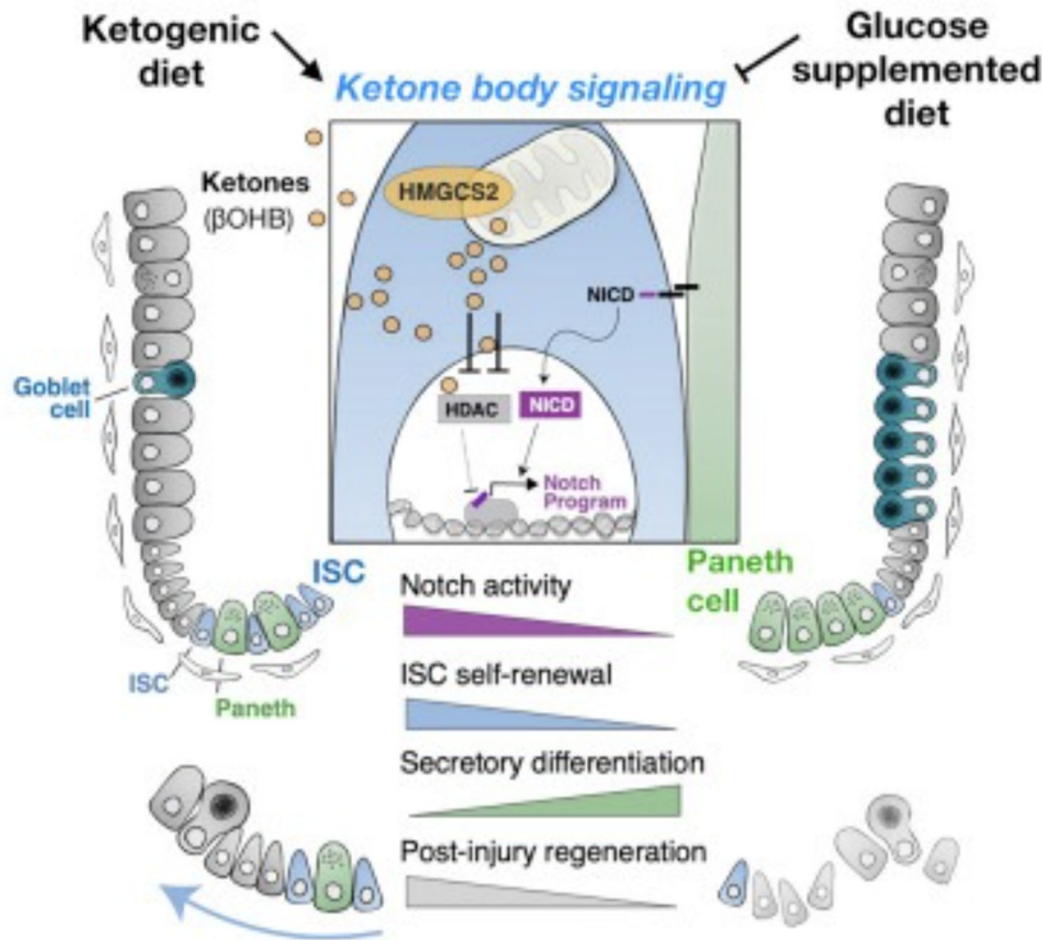


Figure 1. Ketone bodies directly interact with gene expression and post-translational modifications on the level of intestinal stem cells. This strengthens the regenerative capacity of the intestinal wall. Adapted from Cheng et al., 2019. Graphics with kind permission from the MOJO Institute.

Carnivore Diet as a Regenerative Immunotherapy

The carnivore diet has recently gained recognition as a potential paradigm-shifting therapeutic modality for complex chronic diseases. Possibly, the effects are mediated by this diet being closest to the evolutionary origins of our species, as homo sapiens were most likely an apex predator with a carnivorous diet in higher, rather rigid trophic levels up to the late pleistocene (Ben-Dor et al., 2021).

The carnivore diet expands on principles of the VLCKD by excluding all plant-based foods and relying only on animal-derived nutrients. Advocates claim that it enhances gut health by removing plant toxins and anti-nutrients such as solanines, saponins, and lectins (Kuang et al., 2023, Konijeti et al., 2017, Gauree et al., 2017, and Iablokov et al., 2010).

Furthermore, increased micronutrient availability in the carnivore diet due to lower phytate content and increased mineral density of animal based foods may contribute to higher regenerative capacity and better immune regulation during carnivore diets (O'Hearn 2020 and Beal et al., 2022).

The relatively low dietary fiber content is a promoted benefit for some conditions of the gastrointestinal tract since soluble dietary fiber may interfere with the activities of pancreatic enzymes and digestion of protein, whereas insoluble fiber could provoke bloating and distension (Tan et al., 2007; Tan et al., 2012). Casual observations and self-claimed benefits are weight loss, improved glucose control, reduced medication needs, and improvements in gut health (Lennerz et al., 2021). However, scientific confirmation under tight regulation is still needed.

NUTRIENT DENSITY PER CALORIE

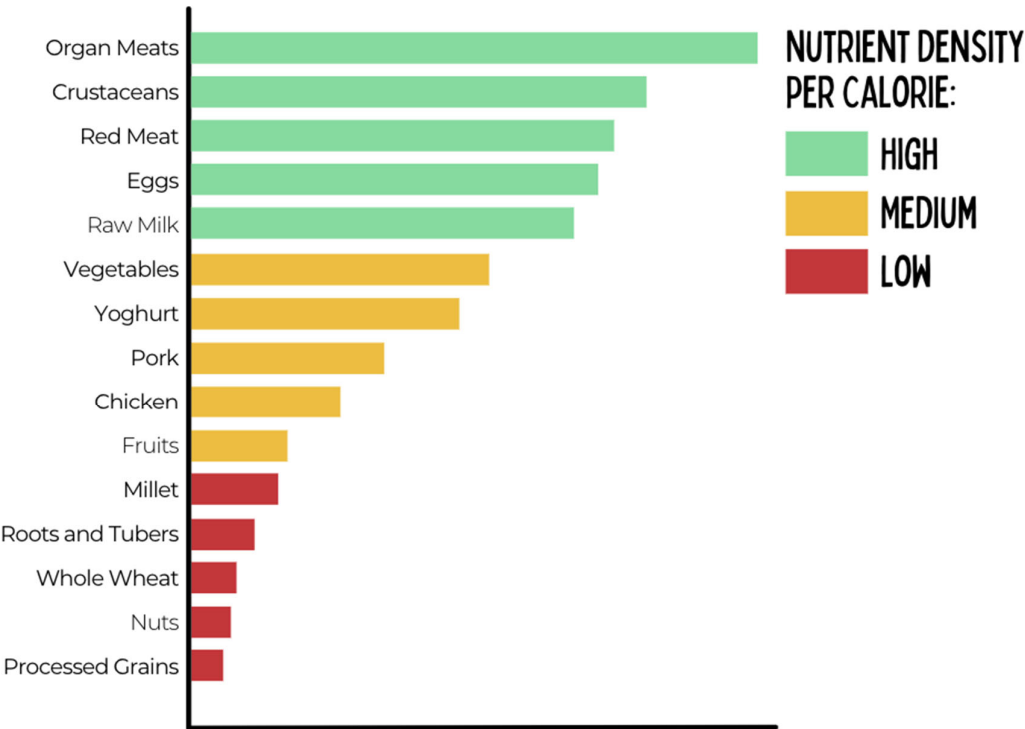


Figure 2. Mineral and vitamin density per calorie is significantly higher in animal-based foods compared to plant-based foods, and especially grains, which exhibit the lowest nutrient density. Adapted from Beal et al., 2022, with permission from the MOJO Institute.

Hypothesized Mechanisms of the Carnivore Diet

The carnivore diet may offer some advantages over the VLCKD, particularly for patients with IBD. These are:

1. **Decreased Plant Toxins:** Plants contain various toxins. Lectins, solanines, and saponins are associated with autoimmunity and inflammation (Kuang et al., 2023, Konijeti et al., 2017, and Iablokov et al., 2010).
2. **Direct SCFA Supply:** With the direct provision of SCFAs and the growth stimulation of SCFA-producing bacteria, the carnivore diet may bypass pre-existing dysbiosis, which is highly prevalent in the IBD population. (Alsharairi et al., 2021, Parada Venegas et al., 2019 and Kaur et al. 2011).

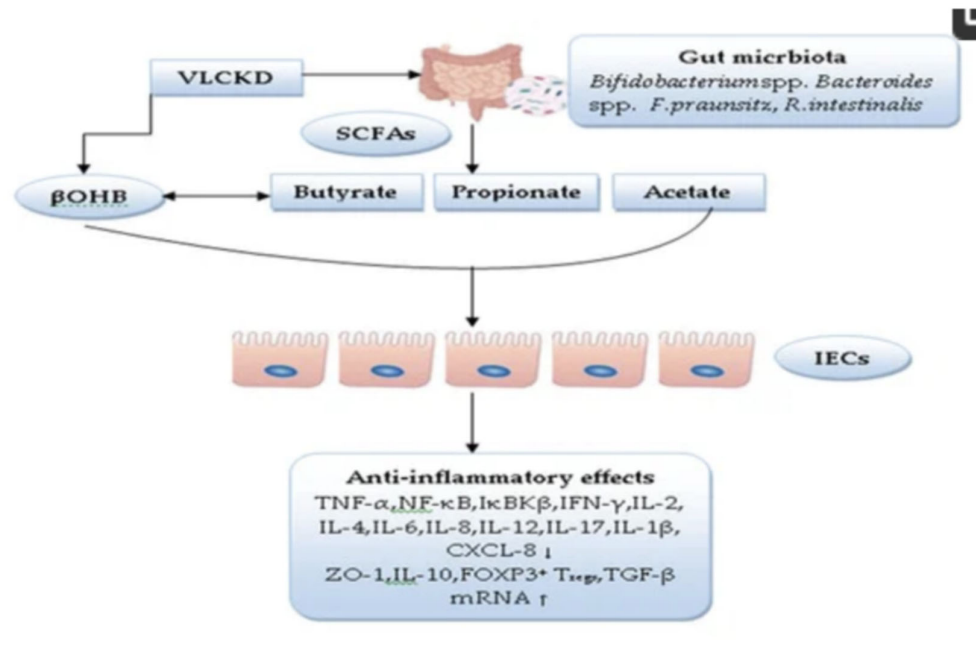


Figure 3. A ketogenic diet supports the proliferation of SCFA-producing bacteria, in turn potentially modifying epigenetic control of gene expression and thus regulating intestinal tissue inflammation in IBD. Adapted from Alsharairi et al., 2021. Graphic provided with the permission of the MOJO Institute, Hennef, Germany.

3. **Reduced Omega-6 (Linoleic Acid) consumption:** Linoleic Acid may directly induce inflammation in the intestinal epithelium via formation of oxidative linoleic acid metabolites (OXLAMs) and consequent dysregulation of the Endocannabinoid System (Deol et al., 2023). Carnivore diets more closely resemble the pre-modern consumption of <2g/day linoleic acid vs. the modern consumption of 29g/day (Mercola et al., 2023).
4. **Higher Micronutrient Density:** Animal Foods are more dense in most micronutrients (vitamins and minerals) compared with plant foods and lack anti-nutrients such as phytates (O'Hearn, 2020, Beal et al., 2022), which may improve immune regulation and regenerative capacity of intestinal epithelial cells.

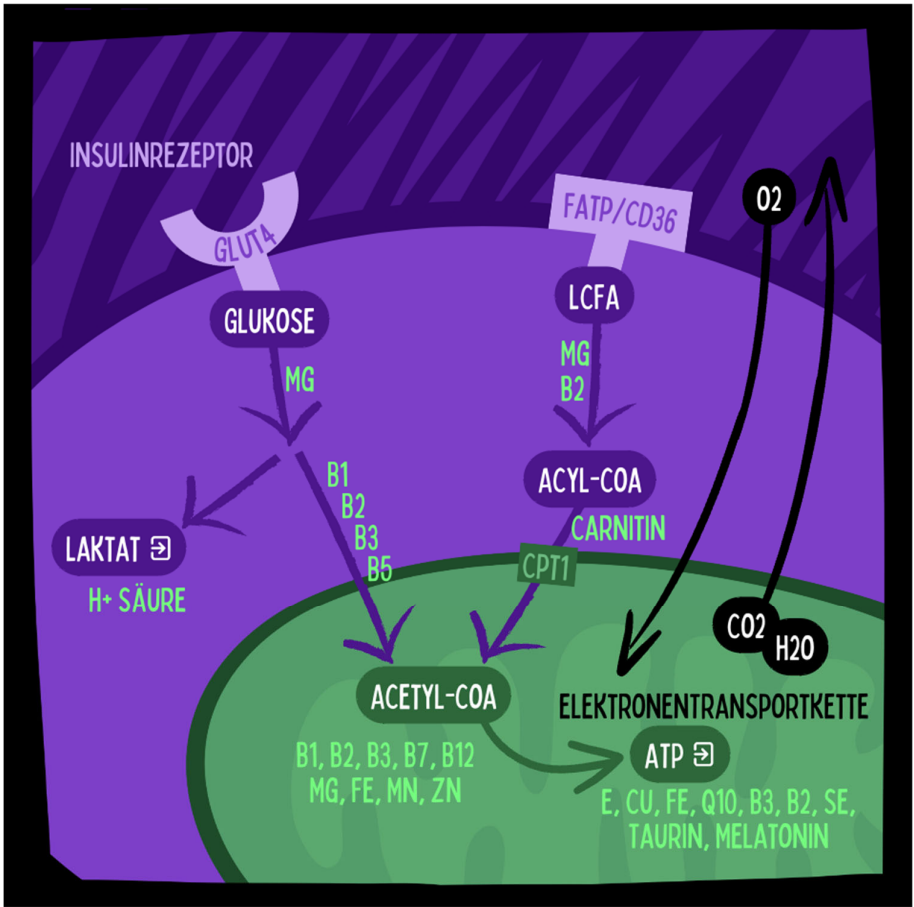


Figure 4. The Oxidative Metabolism of Glucose and Fatty Acids into ATP in Mitochondria Requires Multiple Micronutrients Including Vitamins and Minerals. These micronutrients are more concentrated in animal products than in plant based foods. Illustration by MOJO Studio, Hennef, Germany.

5. **Reduced Dietary Fiber:** Soluble fiber inhibits activity of pancreatic enzymes and protein sequestration while insoluble fiber increases bloating and tension possibly contributing to intestinal pathologies (Tan et al., 2007, Tan et al., 2012).

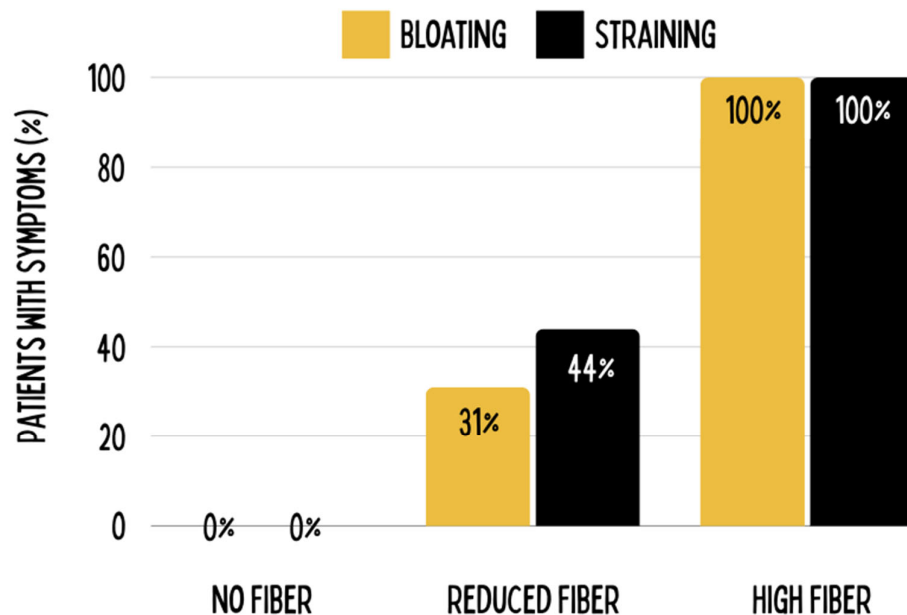


Figure 5. Dietary fiber can contribute to bloating and straining, as was revealed by an experimental study in which 63 patients were subjected to three levels of fiber intake: no fiber restriction, medium fiber restriction, and complete fiber restriction over six months. Results indicated that while all patients on the high-fiber diet remained symptomatic, none of the patients on the zero-fiber diet exhibited symptoms after six months. Figure adapted from Tan et al., 2012, courtesy of the MOJO Institute, Hennef, Germany.

Possible Concerns

A carnivore diet has been subject to some stringent criticisms in terms of potential individual health risks:

1. **Gout Risks:** The supersaturation of uric acid can -under the wrong circumstances- lead to the deposition of monosodium urate monohydrate crystals in the tissues, with resultant gout arthritis. Gout can be manifested by the elevation of serum urate, acute gouty arthritic attacks, the formation of tophi, gouty nephropathy, and uric acid stones. Meat itself has not been established as a causative agent, but the high amount of purine within it can serve as a triggering factor in causing episodes of gout arthritis in a pre-existing metabolic dysregulation. Our own clinical experience shows that a ketogenic/carnivore diet can even alleviate gout medium term. Hypothetically, this could be due to reduced oxidative stress since uric acid acts as an antioxidant, reduced availability of dietary monosodium (glutamate), or perhaps increased exercise in our patient population since muscle activity induces myokine secretion, hence helping in the conversion of uric acid to allantoin for excretion through the kidneys (Roman 2023). Indeed, recent reviews have confirmed our observation of reduced uric acid in very low carbohydrate ketogenic diets (Gohari et al., 2023).
2. **Carcinogenicity:** The World Health Organizations (WHO) International Agency for the Research of Cancer (IARC) has classified Processed Meat as carcinogenic (Class I), and unprocessed Red Meat as possibly carcinogenic (Class IIa). No causal relationships have been established and no causal agents in red meat have been identified to date. By the classification standards of IARC, the classification is to be based on an associative relationship and does not establish the magnitude of risk. Recent systematic reviews have argued that evidence even for the proposed associative relationship between unprocessed red meat and negative health

- outcomes (including cancer) is lacking, and recommendations for reduced consumption of unprocessed red meat are not backed by scientific data (Lescinsky et al., 2022 and Bradley et al., 2019).
3. **Dyslipidemia and Cardiovascular Risks:** For a given population on a standard diet, increased serum total LDL Lipoprotein molecular mass (measured in mg/dl) has been considered causal in the progression of atherosclerosis (Libby 2021). On ketogenic diets, total serum LDL lipoprotein mass can and most likely will increase; however, the size of the LDL particle becomes larger, thereby reducing the number of atherogenic particles (Westman et al. 2006, Falkenhain et al., 2021, and Froyen 2021, and Qiao et al., 2022). A reduction in the number of the atherogenic small and dense LDL lipoproteins and concurrent increase in the lipoprotein size is associated with improved cardiovascular risk markers such as reduced BMI, body weight, inflammatory markers, sdLDL, Triglycerides, Lipoprotein A, Apolipoprotein B, Blood Glucose, HbA1c, Insulin, and Blood Pressure, and increased HDL. During ketogenic diets LDL Lipoproteins serve other functions as in standard diets and are not to be interpreted as signs of metabolic dysfunction (Norwitz et al., 2022). Therefore, increased serum LDL on a ketogenic diet has to be evaluated differently than increased serum LDL on a standard diet and statin therapy is usually not warranted in a low-carbohydrate ketogenic diet (Diamond et al., 2022)

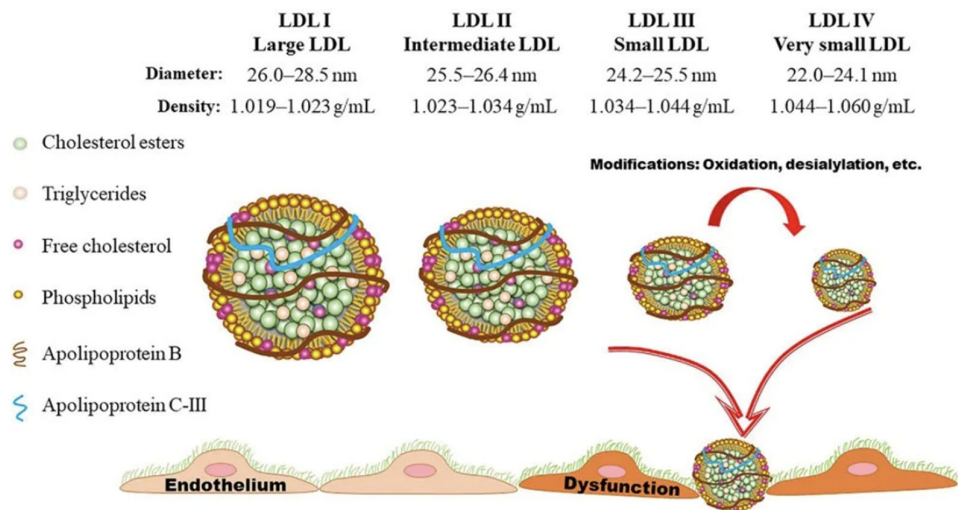


Figure 6. Low Density Lipoproteins (LDL) vary by size. Smaller Lipoproteins have a higher propensity to oxidize and paracellularly pass the endothelium to assist in the progression of atherosclerosis. Under ketogenic diets lipoproteins tend to increase in size without increasing the particle number, resulting in higher serum weights (measured in mg/dl). According to best available evidence this increase in mass, while at the same time increasing size with stable or even decreased particle numbers (as measured by reduced apolipoprotein B under ketogenic conditions) does not constitute an increased cardiovascular risk and does not warrant statin therapy. Adapted from Qiao et al., 2022, courtesy of the MOJO Institute, Hennef, Germany.

No proposed risk has so far been conclusively confirmed nor denied. Small associations have been spotted between intake of meat and gout, cancers, and cardiovascular events absent identification of causal relationships or conclusive causal agents. On the other hand, there are also no conclusive trials to indicate the long-term safety of a carnivore or meat-intensive diet. Hence further research is warranted.

Testing the Hypothesis – Study Design and Methodology

The hypothesis can be tested in a 12-week clinical study, investigating safety, feasibility, and clinical efficacy of a carnivore diet in a cohort of IBD patients.

Study Objectives

The primary objective is to establish the feasibility and safety of a carnivore diet in a cohort of IBD patients. Secondary objectives will assess clinical and functional outcomes at 1, 6, and 12 weeks with the IBDQ-32, SCCI, and CDAI. Other measures will include heart rate variability, bioimpedance, blood pressure, body measurements, body temperature, breath analysis, gut microbiota, inflammation markers, urea and electrolyte levels, liver function, fasting insulin, HbA1c, vitamin and mineral status, and lipid profile. Table 1 provides a detailed listing of the blood parameters to be measured, which include but are not limited to inflammation markers, LFT, lipid profile, vitamins, mineral levels, and other biomarkers as needed.

Participants will keep a food diary daily and monitor their blood ketone levels.

Table 1. Comprehensive list of blood markers to be evaluated before and after.

<i>Alkaline Phosphatase</i>	<i>Full Blood Count (EDTA)</i>	<i>Lipoprotein (a) (Serum)</i>
<i>Bilirubin (Serum)</i>	<i>Reticulocytes (EDTA)</i>	<i>TSH Basal (Serum)</i>
<i>Calcium (Serum)</i>	<i>Quick/INR (Citrate)</i>	<i>Apo-Lipoprotein B (Serum)</i>
<i>Chloride (Serum)</i>	<i>PTT (Citrate)</i>	<i>Homocysteine (Serum centrifuged)</i>
<i>Cholesterol (Serum)</i>	<i>Thrombin Time (Citrate)</i>	<i>Cortisol Awake Response (Saliva)</i>
<i>HDL (Serum)</i>	<i>Indirect Bilirubin (Serum)</i>	<i>Molecular Genetic Profile</i>
<i>LDL (Serum)</i>	<i>Minerals 11+4 (Heparin)</i>	<i>Microbiota (Stool)</i>
<i>CK (Serum)</i>	<i>hsCRP (Serum)</i>	<i>SCFA (Short-Chain Fatty Acids) (Serum)</i>
<i>CK-MB (Serum)</i>	<i>TNF-alpha (Serum)</i>	<i>SCFA (Short-Chain Fatty Acids) (Stool)</i>
<i>Iron (Serum)</i>	<i>Ferritin (Serum)</i>	<i>Pancreatic Elastase (Stool)</i>
<i>Protein Electrophoresis (Serum)</i>	<i>Vitamin B1 bioactive (Serum)</i>	<i>Bile Acids (Stool)</i>
<i>Total Protein (Serum)</i>	<i>Vitamin B2 bioactive (Serum)</i>	<i>Alpha-1-Antitrypsin (Stool)</i>
<i>GOT (Serum)</i>	<i>Vitamin B6 bioactive (Serum)</i>	<i>Zonulin (Stool)</i>
<i>GPT (Serum)</i>	<i>Vitamin B9 bioactive (EDTA)</i>	<i>Calprotectin (Stool)</i>
<i>Uric Acid (Serum)</i>	<i>Vitamin B12 bioactive (Serum)</i>	<i>MDA-LDL (Serum)</i>
<i>Urea (Serum)</i>	<i>25-OH-Vitamin D (Serum)</i>	<i>AGE (Serum)</i>
<i>HbA1 (EDTA)</i>	<i>Amino Acids Metabolism (EDTA Plasma)</i>	<i>IL-6 (Serum)</i>
<i>Potassium (Serum)</i>	<i>Amino Acids Neuro (EDTA Plasma)</i>	<i>BDNF (Serum)</i>
<i>Creatinine (Serum)</i>	<i>Lactate/Pyruvate (Fluoride 3x)</i>	<i>Lipopolysaccharide Binding Protein (LBP)</i>
<i>LDH (Serum)</i>	<i>Nitrotyrosine (Serum)</i>	<i>(Serum centrifuged)</i>
<i>Sodium (Serum)</i>	<i>Carnitine (Serum)</i>	<i>IFABP (Serum)</i>
<i>Inorganic Phosphate (Serum)</i>	<i>Fatty Acids of Erythrocyte Membrane</i>	
<i>Transferrin (Serum)</i>	<i>(EDTA)</i>	
<i>Triglycerides (Serum)</i>		

Study Design

This prospective study should enroll a minimum of 12 IBD patients in a 12-week non-randomized, single-arm pilot study. All participants will be taken through written informed consent.

Participant Criteria

Inclusion criteria:

- Diagnosis of IBD as per Montreal classification
- Aged 18-70 years.

Exclusion criteria:

- Pregnant or intending to become pregnant within the next 3 months.
- Currently abusing substances.
- On ketogenic or carnivore diet in last 6 months.
- Currently Vegan or vegetarian diet and unwilling to switch to carnivore diet.
- Hospitalization during the last 3 months.
- Participation in another research project.
- Inability to fill out the initial questionnaires.
- Active liver, kidney, or cardiovascular diseases, kidney stones, severe hyperlipidemia.

Metabolic disorders that will be an exclusion criteria:

- Glycogen storage disease type 1 (von Gierke disease).
- Carnitine palmitoyltransferase deficiencies (CPT I/II).
- Primary carnitine deficiency.
- Carnitine-acylcarnitine translocase deficiency.
- Pyruvate carboxylase deficiency.
- Succinyl-CoA acetoacetate transferase deficiency.
- Various fatty acid oxidation disorders.
- Acute intermittent porphyria.

Implementation and Follow-Up

Participant Training

The participants will be trained once in an educational workshop, given at the Kick-off event of the study, about:

- Nutritional science behind the ketogenic and carnivore diets.
- Appropriate foods and sample recipes.
- Targeted ketone and glucose levels.
- Food measurement-grams.
- Preparation for diet initiation across environments.
- Overcoming obstacles-quality, procurement, and preparation.
- Dining out, traveling, and illness guidelines.
- Medication guidelines.
- Prevention/management of potential side effects; for example hypoglycemia or hyperketosis.
- Why diets may fail.
- Modifications for illness-more water, no concern for ketone level.
- Fitting the diet into larger ecological, spiritual, and economic contexts.

Ketone Monitoring

The nutritional and socio-medical history will be obtained through digital intake interviews with the participants. Continuous monitoring of glucose/ketones will be done with monitoring devices, the data of which is managed daily by the specialist. The participants will have digital access to a community platform, where they can find recipes and instructions. Group exchanges in this online format should also be possible. Once a week, video calls with the specialist and mentor will be used to discuss practical and emotional problems arising from dietary adherence.

Discussion

Chronic complex illnesses such as IBD can be frustrating for both patients and therapists, because of a lack of promising treatment options that resemble full reconstitution/regeneration. The need to advance medical knowledge and care for patients afflicted by these diseases is rising. The carnivore diet -a possible new regenerative immunotherapy- seems promising. Yet, for patients with IBD, being put on a radical carnivorous diet would require multifaceted consideration of ethical, ecological, economic concerns and individual health needs.

Fully informed consent -as in all medical therapies- is needed, where all possible benefits and risks should be presented. Ecologically, a diet with a high intake of animal products has sustainability concerns, which are yet unclear; hence, this too will require discussion in light of finding ethical and sustainable ways of sourcing animal products. Economically, dietary cost and food access need consideration to ensure that it will place no undue burden on the patients or that it will not further exacerbate health disparities.

From the point of view of individual health, even if there is plenty of anecdotal evidence, in particular, as to the benefits, the adverse effects should be carefully and intensively investigated. High animal product consumption entails risks for diseases such as gout, cardiovascular diseases, and particular types of cancer. These risks should be assessed and followed closely for therapeutic carnivore diets in order to attend to the subjects' long-term safety and vitality.

The following monitoring protocols are necessary:

- for gout risk, check uric acid levels on a regular basis.
- for cancer risk, perform long-term monitoring of biomarkers for cancer.
- for cardiovascular risk, evaluate lipid profiles including Apolipoprotein B as a measure of particle number, blood pressure, visceral body fat and markers of systemic inflammation such as hsCRP.

In summary, academia and clinical medicine needs a multi-disciplinary approach, which has to integrate nutrition, behavioral psychology, immunology, gastroenterology, and bioethics. By balancing and reviewing all aspects, we want to explore the healing potential of a carnivore diet while ensuring the safety of the patient and also regarding the possible ethical, ecological as well as economic issues.

We hereby summarize the current best available evidence for a therapeutic carnivore diet as a regenerative immunotherapy and hypothesize that it could make a significant difference in the management of IBD and perhaps bring relief to patients unresponsive to current treatments. Such a therapeutic carnivore diet requires very considered planning, transparent reporting, and dedication to responsible and comprehensive patient care. An experimental design to test our hypothesis was proposed. This review, hypothesis, and experimental design guarantee a comprehensive framework for investigating the carnivore diet as a novel regenerative immunotherapy in IBD, which can have a clinical application based on such findings. Insights from this would extend beyond the specific focus to wider applications in other chronic inflammatory diseases.

References

- Alshairi, N.A. (2021). The Role of Short-Chain Fatty Acids in Mediating Very Low-Calorie Ketogenic Diet-Infant Gut Microbiota Relationships and Its Therapeutic Potential in Obesity. **Nutrients**, 13(11), 3702. doi: 10.3390/nu13113702. PMID: 34835958; PMCID: PMC8624546.
- Andersen, O.E., Poulsen, J.V., Farup, J. & de Morree, A. (2023). Regulation of adult stem cell function by ketone bodies. **Frontiers in Cell and Developmental Biology**, 11, 1246998. doi: 10.3389/fcell.2023.1246998. PMID: 37745291; PMCID: PMC10513036.
- Beal, T. & Ortenzi, F. (2022). Priority Micronutrient Density in Foods. **Frontiers in Nutrition**, 9: 806566. doi: 10.3389/fnut.2022.806566.
- Ben-Dor, M., Sirtoli, R. & Barkai, R. (2021). The evolution of the human trophic level during the Pleistocene. **Yearbook of Physical Anthropology**, 175(Suppl. 72), 27–56. <https://doi.org/10.1002/ajpa.24247>.
- Bradley C. Johnston, Dena Zeraatkar, Mi Ah Han, et al. Unprocessed Red Meat and Processed Meat Consumption: Dietary Guideline Recommendations From the Nutritional Recommendations (NutriRECS) Consortium. *Ann Intern Med.*2019;171:756-764. [Epub 1 October 2019]. doi:10.7326/M19-1621

- Bohnen, J.L.B., Albin, R.L. & Bohnen, N.I. (2023). Ketogenic interventions in mild cognitive impairment, Alzheimer's disease, and Parkinson's disease: A systematic review and critical appraisal. **Frontiers in Neurology**. Volume 14. doi: 10.3389/fneur.2023.1123290.
- Cheng, C.-W., Biton, M., Haber, A.L., Gunduz, N., Eng, G., Gaynor, L.T., Tripathi, S., Calibasi-Kocal, G., Rickelt, S., Butty, V.L., Moreno-Serrano, M., Iqbal, A.M., Bauer-Rowe, K.E., Imada, S., Ulutas, M.S., Mylonas, C., Whary, M.T., Levine, S.S., Basbinar, Y., Hynes, R.O., Mino-Kenudson, M., Deshpande, V., Boyer, L.A., Fox, J.G., Terranova, C., Rai, K., Piwnica-Worms, H., Mihaylova, M.M., Regev, A. & Yilmaz, Ö.H. (2019). Ketone Body Signaling Mediates Intestinal Stem Cell Homeostasis and Adaptation to Diet. **Cell**, 178(5), 1115-1131.e15. doi: 10.1016/j.cell.2019.07.048.
- Diamond DM, Bikman BT, Mason P. Statin therapy is not warranted for a person with high LDL-cholesterol on a low-carbohydrate diet. *Curr Opin Endocrinol Diabetes Obes.* 2022 Oct 1;29(5):497-511. doi: 10.1097/MED.0000000000000764. Epub 2022 Aug 4. PMID: 35938780.
- Gohari, S., Ghobadi, S., Jafari, A. et al. The effect of dietary approaches to stop hypertension and ketogenic diets intervention on serum uric acid concentration: a systematic review and meta-analysis of randomized controlled trials. *Sci Rep* 13, 10492 (2023). <https://doi.org/10.1038/s41598-023-37672-2>
- Kaja Falkenhain, Lauren A Roach, Sara McCreary, Eric McArthur, Ethan J Weiss, Monique E Francois, Jonathan P Little, Effect of carbohydrate-restricted dietary interventions on LDL particle size and number in adults in the context of weight loss or weight maintenance: a systematic review and meta-analysis, *The American Journal of Clinical Nutrition*, Volume 114, Issue 4, 2021, Pages 1455-1466, ISSN 0002-9165, <https://doi.org/10.1093/ajcn/nqab212>.
- Deol, P. et al. (2023). Diet high in linoleic acid dysregulates the intestinal endocannabinoid system and increases susceptibility to colitis in Mice. **Gut Microbes**, 15(1), 2229945. doi: 10.1080/19490976.2023.2229945.
- Gauree, G., Konijeti, G., Kim, N., Lewis, J.D., Groven, S., Chandrasekaran, A., Grandhe, S., Diamant, C., Singh, E., Oliveira, G., Wang, X., Molparia, B., Torkamani, A. (2017). Efficacy of the Autoimmune Protocol Diet for Inflammatory Bowel Disease. **Inflammatory Bowel Diseases**, 23(11), 2054–2060. doi: 10.1097/MIB.0000000000001221.
- Iablokov, V., Sydora, B.C., Foshaug, R. et al. (2010). Naturally Occurring Glycoalkaloids in Potatoes Aggravate Intestinal Inflammation in Two Mouse Models of Inflammatory Bowel Disease. **Digestive Diseases and Sciences**, 55, 3078–3085. <https://doi.org/10.1007/s10620-010-1158-9>.
- Kaur, N., Chen, C.C., Luther, J. & Kao, J.Y. (2011). Intestinal dysbiosis in inflammatory bowel disease. **Gut Microbes**, 2(4), 211–216. <https://doi.org/10.4161/gmic.2.4.17863>.
- Kossoff, E.H., Turner, Z., Cervenka, M. & Barron, B. (2021). **Ketogenic Diet Therapies for Epilepsy and Other Conditions**. New York: Demos Health.
- Kuang, R., Levinthal, D.J., Ghaffari, A.A. et al. (2023). Nightshade Vegetables: A Dietary Trigger for Worsening Inflammatory Bowel Disease and Irritable Bowel Syndrome?. **Digestive Diseases and Sciences**, 68, 2853–2860. doi: 10.1007/s10620-023-07955-9.
- Lennerz, B.S., Mey, J.T., Henn, O.H. & Ludwig, D.S. (2021). Behavioral Characteristics and Self-Reported Health Status among 2029 Adults Consuming a "Carnivore Diet". **Current Developments in Nutrition**, 5(12), nzab133. doi: 10.1093/cdn/nzab133.
- Lescinsky, H., Afshin, A., Ashbaugh, C. et al. Health effects associated with consumption of unprocessed red meat: a Burden of Proof study. *Nat Med* 28, 2075–2082 (2022). <https://doi.org/10.1038/s41591-022-01968-z>
- Libby, P. The changing landscape of atherosclerosis. *Nature* 592, 524–533 (2021). <https://doi.org/10.1038/s41586-021-03392-8>
- Martin-McGill, K.J., Bresnahan, R., Levy, R.G. & Cooper, P.N. (2020). Ketogenic diets for drug-resistant epilepsy. **Cochrane Database of Systematic Reviews**, 6, CD001903.
- Mercola J, D'Adamo CR. Linoleic Acid: A Narrative Review of the Effects of Increased Intake in the Standard American Diet and Associations with Chronic Disease. *Nutrients.* 2023; 15(14):3129. <https://doi.org/10.3390/nu15143129>
- Needham, N., Campbell, I., Grossi, H., Kamenska, I., Rigby, B., Simpson, S., ... & Smith, D. (2023). Pilot study of a ketogenic diet in bipolar disorder. **BJPsych Open**, 9(6), E176.
- Norwitz NG, Soto-Mota A, Kaplan B, Ludwig DS, Budoff M, Kontush A, Feldman D. The Lipid Energy Model: Reimagining Lipoprotein Function in the Context of Carbohydrate-Restricted Diets. *Metabolites.* 2022; 12(5):460. <https://doi.org/10.3390/metabo12050460>
- O'Hearn, A. (2020). Can a carnivore diet provide all essential nutrients? **Current Opinion in Endocrinology, Diabetes and Obesity**, 27(5), 312-316. doi: 10.1097/MED.0000000000000576.
- Parada Venegas, D. et al. (2019). Short Chain Fatty Acids (SCFAs)-Mediated Gut Epithelial and Immune Regulation and Its Relevance for Inflammatory Bowel Diseases. **Frontiers in Immunology**, 10, 277. doi: 10.3389/fimmu.2019.00277.
- Roman, Y.M. The Role of Uric Acid in Human Health: Insights from the Uricase Gene. *J. Pers. Med.* 2023, 13, 1409. <https://doi.org/10.3390/jpm13091409>

- Sourbron, J., Klinkenberg, S., van Kuijk, S.M.J., Lagae, L., Lambrechts, D. & Braakman, H.M.H. (2020). Ketogenic diet for the treatment of pediatric epilepsy: review and meta-analysis. **Child's Nervous System**, 36(6), 1099-1110.
- Srivastava, S., Pawar, V.A., Tyagi, A., Sharma, K.P., Kumar, V. & Shukla, S.K. (2023). Immune Modulatory Effects of Ketogenic Diet in Different Disease Conditions. **Immuno**, 3, 1-15. doi: 10.3390/immuno3010001.
- Tan, K.Y. & Seow-Choen, F. (2007). Fiber and colorectal diseases: separating fact from fiction. **World Journal of Gastroenterology**, 13(31), 4161-4167. doi: 10.3748/wjg.v13.i31.4161. PMID: 17696243; PMCID: PMC4250613.
- Tan, C., Daud, M. & Seow-Choen, F. (2012). Stopping or reducing dietary fiber intake reduces constipation and its associated symptoms. **World Journal of Gastroenterology**, 18(33), 4593-4596. doi: 10.3748/wjg.v18.i33.4593.
- Tóth, C., Dabóczi, A., Howard, M., Miller, N.J. & Clemens, Z. (2016). Crohn's disease successfully treated with the paleolithic ketogenic diet. **International Journal of Case Reports and Images**, 7(10), 570-578.
- Qiao Ya-Nan , Zou Yan-Li , Guo Shou-Dong (2022). Low-density lipoprotein particles in atherosclerosis, *Frontiers in Physiology*, Volume 13, 2022, 10.3389/fphys.2022.931931
- Westman Eric, William S. Yancy, Maren K. Olsen, Tara Dudley, John R. Guyton, Effect of a low-carbohydrate, ketogenic diet program compared to a low-fat diet on fasting lipoprotein subclasses, *International Journal of Cardiology*, Volume 110, Issue 2, 2006, Pages 212-216, ISSN 0167-5273, <https://doi.org/10.1016/j.ijcard.2005.08.034>.

Disclaimer/Publisher's Note: The statements, opinions and data contained in all publications are solely those of the individual author(s) and contributor(s) and not of MDPI and/or the editor(s). MDPI and/or the editor(s) disclaim responsibility for any injury to people or property resulting from any ideas, methods, instructions or products referred to in the content.