

Article

Not peer-reviewed version

Lentil Landrace Seed Origin and Genotype Affects Rhizosphere Microbiome

[Anthoula Gleridou](#) , [Georgios Giannopoulos](#) , [Alexios N. Polidoros](#) , [Photini V. Mylona](#) *

Posted Date: 2 November 2023

doi: 10.20944/preprints202311.0150.v1

Keywords: organic-; conventional-farming; next-generation sequencing; metagenomics; microbial diversity; N2-fixing bacteria; archaea



Preprints.org is a free multidiscipline platform providing preprint service that is dedicated to making early versions of research outputs permanently available and citable. Preprints posted at Preprints.org appear in Web of Science, Crossref, Google Scholar, Scilit, Europe PMC.

Copyright: This is an open access article distributed under the Creative Commons Attribution License which permits unrestricted use, distribution, and reproduction in any medium, provided the original work is properly cited.

Article

Lentil Landrace Seed Origin and Genotype Affects Rhizosphere Microbiome

Anthoula Gleridou ¹, Georgios Giannopoulos ¹, Alexios N. Polidoros ¹ and Photini V. Mylona ^{2,*}

¹ Laboratory of Genetics and Plant Breeding, Faculty of Agriculture, Aristotle University of Thessaloniki, 54124 Thessaloniki, Greece; anthigleridou@yahoo.gr (AG); ggiannopoulos@gapps.auth.gr (GG); paleios@agro.auth.gr (ANP)

² Institute of Plant Breeding & Genetic Resources, HAO-DEMETER, 57001 Thermi, Greece; phmylona@elgo.gr (PVM)

* Correspondence: phmylona@elgo.gr; tel: +30-2310-471544

Abstract: Lentil (*Lens culinaris* Medik.) is an essential legume crop providing healthy and nutritious food for people in low- to middle-income countries, worldwide. Lentil roots support symbiotic interactions with soil rhizobia species fostering nitrogen fixation; however, assemblage and diversity of the complete microbial rhizosphere community and the effect of seed genotype and origin remains largely unexplored. In this study we examined with metagenomic analysis, the effects of seed origin on the rhizosphere's communities in samples of the famous Greek lentil landrace Eglouvis derived from different local farmers and farming systems including a Gene Bank sample, in comparison to a commercial variety. The landrace exhibited higher rhizosphere microbiome diversity compared to the commercial variety for all indexes. A core microbiome comprised of 158 taxa was present in all samples, while higher number of unique bacterial taxa was recorded in the landrace samples compared to the commercial cultivar. Noteworthy, landrace samples originated from organic farming had more than double unique taxa compared to conventional counterparts. The study revealed higher diversity of N₂ fixers and archaea, *Crenarchaeota* and *Thaumarchaeota*, in landrace samples and particularly in those derived from organic farming, underpinning the distinct recruiting efficiency of beneficial soil microbes by the landrace.

Keywords: organic-; conventional-farming; next-generation sequencing; metagenomics; microbial diversity; N₂-fixing bacteria; archaea

1. Introduction

Globally, lentil (*Lens culinaris* Medik.) is an important food source, due to its rich content in proteins, minerals and vitamins with yields exceeding 5 million tons per year [1]. Lentil local landraces are of particular interest primarily as a highly nutritious pulse crop providing high quality, fortified products designated often as PDO (Protected Designation of Origin) and as PGI (Protected Geographical Indication) that foster mainly local society and economy and avert land degradation and desertification. In Europe alone, PDO and PGI products represent a sales value exceeding € 57 billion (10¹⁰). Secondly, as a genetic reservoir of traits and genetic alleles that yet remain untapped and could provide valuable tools to improve crop resilience and climate change adaptation to safeguard food security. And thirdly, as a protein-rich crop grown in low-input and rainfed systems that promote sustainability. Archeological evidence in Peloponnese, Greece indicated that lentil cultivation dated back to 11000 BC. Following, centuries of lentil continuous cultivation have led to the development of landraces as fundamental components of Mediterranean farming systems and diet. Lentil is a self-pollinated species and is generally accepted that several landrace characteristics are co-shaped through the continuous exposure to abiotic and biotic factors of the local environment, including poor soil fertility or exposure to pathogens and farmers' selection to meet local needs [2,3].

On the other hand, breeding programs have released commercial cultivars of legumes including lentil, achieving uniformity and better yields, both trends of contemporary agriculture.

The famous lentil landrace Eglouvis also known as “Faki Eglouvis” is cultivated in the homonymous plateau since 1700 in Lefkada Island, Greece [2]. The Eglouvis landrace is a microsperma type lentil that represents an excellent paradigm of local landrace on-farm conservation, through traditional cultivation. Undoubtedly landraces represent a vital bond of tradition, history and local identity revealing landscape distinctiveness. Landraces often guarantee higher provisioning services under non-optimal farming conditions [4]. Thus, understanding the intrinsic link among lentil associated rhizosphere microbiomes and agronomic characteristics is crucial to advance food quality of plant protein crops and security as well as soil conditions and functioning in a climate challenging environment.

Nowadays, mounting evidence of research indicate that the plant genome has a central and dynamic role in shaping the composition of the microbiome [5,6]. Awad and coworkers have shown that the phyllosphere microbiome in grapevine cultivars is governed by the cultivar genotype in a collection of grapevine cultivars grown in the same orchard [7]. Thus, demonstrating that plant genotype is key player of the above ground plant microbiome. Lentil, as a member of the Fabaceae family, maintains symbiotic associations with rhizobia species that are responsible for biological nitrogen fixation. Studies have shown that crop, genotype, and field environmental conditions contributed to the seed-associated microbial assemblage, demonstrating that seed microbiome is also vertically transmitted in lentil, wheat, and canola crops [8]. Plant-associated microorganisms can be acquired indirectly from the surrounding environment or directly from the parent, in a vertical transmission pathway for microbial inheritance. Therefore, it is thought that the seed-associated microbiome may impact the development of the developing plant microbiome.

Studies have shown that legumes cultivation and particularly pulse crops such as lentil promote soil fertility and enhance the productivity of sequential crops [9]. It is evident that plant genotype is an important factor not only from a breeding aspect, but equally for obtaining baseline information at microbial level to improve sustainable agricultural production. Lentil crops were shown to influence partially the microbial rhizosphere dynamics of sequential crops, particularly for microbial species that interceded N and P nutrient uptake [9,10]. The enrichment of distinct root-microbes is not limited only to legumes. Wheat landraces have shown to regulate the structure and diversity of rhizosphere microbiomes and in turn influence plant physiological traits [11]. Till now, most of the lentil rhizosphere studies were performed on commercial cultivars under various field conditions. Whether there are differences in lentil rhizosphere microbiome among lentil cultivars and landraces under the same field and environmental conditions still remains unexplored. In a recent study it was shown that irregular high precipitation events have resulted in higher number of specific bacterial taxa identified in the rhizosphere of a lentil landrace compared to the commercial cultivars [12]. Nonetheless, whether a landrace maintains a distinct rhizosphere microbiome signature in comparison to modern varieties under the same field and environmental conditions remains unknown.

The so-called “rhizosphere effect” model describes the interactions and complex functions of the plant root and the surrounding soil environment [13,14]. The model simulates the influence-sphere of the root’s local environment, depicting the interactions of plant genotype, root-exudates, solutes, substrates, and microorganisms that govern nutrient uptake, cycling of resources and plant health. Thus the “rhizosphere effect” model is coined to describe the interplay of genotype specific signaling molecules that support microbial proliferation and are also responsible for the formation of distinct microbial assemblages between soil and the rhizosphere as well as the interactions of the environment, soil-type, microbiome and plant growth and health [15]. It is becoming clear that the soil type and environment, affect the legume rhizosphere microbiome [12,16]. Additionally, time of sampling and sampling compartments further impact the microbiome resulting often to obscure the genotype effect that appears more profoundly in the rhizosphere microbiome of wheat genotypes [17]. Studies on lentil microbiome are scarce and centered in lentil cultivars in comparison to other legumes and crop species under normal and or erratic climate conditions [12,18].

Until now, lentil rhizosphere microbiome research was based on bred cultivars (usually exhibiting genotypic uniformity) commonly known as modern varieties. It has been documented that lentil cultivar, generation, soil type and their interactions were important factors controlling lentil rhizosphere microbiome [8]. To get a further insight into the role of genotype, seed origin and storage conditions in the formation of rhizosphere microbiome we examined root microbiome communities formatted under the same field and environmental conditions in roots of the landrace Eglouvis, the seeds of which originated from different sources. The landrace Eglouvis has a polygenotypic germplasm composition [2] and seeds are selected and stored by individual farmers based on their experience and diligence. Thus, samples from different farmers were included in the study to provide indications for the importance of farmer intervention. Further, crop cultivation conditions may vary among different farmers who may follow conventional or organic farming systems. One sample from organic farming was included to assess the implication of farming system. One GenBank sample was included to detect storage effects under standard GenBank operational procedures. To evaluate the effects of the above described factors on microbiome assemblage we used 16S rRNA gene and ITS high-throughput amplicon sequencing and characterized the rhizosphere bacterial and fungal microbiota across Eglouvis landrace of different origin and compared its microbiomes to a commercial cultivar.

2. Materials and Methods

2.1. Plant material

Lentil germplasm sources, consisted of four Eglouvis samples and a modern commercial cultivar, were used in this study. Three Eglouvis seed samples were collected from local farmers from Lefkada Island, Greece. Two of them originated from conventional farming systems and one from an organic farming system. Additionally, a conserved Gene Bank sample of Eglouvis (GRC 1015) and a commercial lentil variety Demetra were acquired from the Institute of Plant Breeding & Genetic Resources (IPB&GR), Thessaloniki, Greece (Table 1).

Table 1. Details on the collection sites and origin, genotype, and sample source of the seeded material.

Accession	Genotype	Collection site /origin	Cropping system
Eglouvis 1	Landrace	Eglouvis region, Lefkada Island, Greece	Conventional
Eglouvis 2	“	“	Conventional
Eglouvis 3	“	“	Organic
Eglouvis 4	“	GRC1015, IPB&GR, Greece	Conventional
Demetra	Commercial cultivar	IPB&GR, Greece	Conventional

2.2. Experimental design and cultivation

Lentil field cultivation was carried out at IPB&GR, Thessaloniki, Greece (22o 59’ 6.17” E, 40o32’ 9.32” N) during the growing seasons of 2020 – 2021. Lentils were sown directly in a random plot design (2.5 x 8 m), part of a bigger lentil field trial (December 2020). Practically, seeds from each sample were grown scattered throughout the experimental plot with the exact location and origin of each plant marked and recorded for following analyses. Lentil cultivation followed a rainfed system, without any additional fertilization nor pesticide application. During cultivation visible weeds were removed manually. Weather data including rainfall and air temperature were recorded on site. Field soil properties at 0 - 30 cm are summarized in Table 2.

Table 2. Soil properties of lentil experimental field.

Soil Property (units)	Value
Soil type	Loam
Silt (%)	42
Clay (%)	20
Sand (%)	36
pH	7.8
EC (mS/cm)	0.6
SOM (%)	1.6
NO ₃ -N (kg ha ⁻¹)	63.2
P (kg ha ⁻¹)	17.2
K (kg ha ⁻¹)	538.5

2.3. Sampling

Rhizosphere soil and plant samples were collected at the mid-blooming stage (April 2021). About 10-12 random plants were carefully removed from three random locations of each plot, excluding boundary rows. Lentil plants were separated in two parts, above ground shoot and rhizosphere. Lentil roots with the adhered soil were placed in plastic bags and quickly transported to the laboratory, while being cooled (icebox). Then rhizosphere soil was separated from roots using a soft brush. Approximately 5 g of pooled rhizosphere soil was collected in sterile tubes (Falcon 15 ml) stored at -20°C until further processing. Roots were rinsed clean with distilled water, and subsamples were prepared and preserved for further analyses.

2.4. Plant morphological traits

The above ground plant samples were used to assess shoot biomass dry-weight (SB-dw) and height (h). Root samples were used to assess root length (l), root biomass dry-weight (RB-dw), rhizobia and arbuscular mycorrhiza fungal colonization (AMF). Specifically, rhizobia nodulations were determined microscopically. AMF colonization (counts) per plant were determined macroscopically using the ink-vinegar method, as previously described [19] with some modifications. Specifically, roots were rinsed with deionized water and cleared with 10% KOH for 10 min at 80 °C. After rinsing with deionized water, roots were placed in a 1% HCl solution for 20-30 min to neutralize the pH and subsequently were stained with an ink-vinegar solution (57 mL Black Parker Quink in 1000 mL vinegar) for 5–10 min at 80 °C. Finally, roots were rinsed with deionized water and stored in 50% glycerol. Twenty-five root fragments were mounted on a microscope slide and the presence of vesicles, arbuscules, and hyphae counted at four different points along each root piece (100 intersections in total) with a light Leitz Laborlux S microscope (Ernst Leitz Wetzlar GmbH, Germany).

2.5. DNA extraction

DNA was extracted from soil rhizosphere samples (500 mg) using NucleoSpin Soil kit (Macherey-Nagel, Düren, Germany) following SL1 solution extraction protocol according to manufacturer’s instructions. DNA concentration was quantified using Qbit 4 Fluorometer (Thermo Fisher Scientific, Waltham, MA, USA) and visualized in 1% agarose gel electrophoresis. Samples were stored in -20°C until further analyses.

2.6. Sequencing and bioinformatic analyses

Library preparation and high-throughput sequencing was performed at the Sequencing Facility of the Laboratory of Genetics and Plant Breeding, School of Agriculture, Aristotle University of Thessaloniki, Greece, following a similar approach as in [7] with modifications. Briefly, instead of using Thermo 16S metagenomics kit, we amplified bacterial (V4) and fungal (ITS2) targets using the Platinum™ II Hot-Start PCR Master Mix (Thermo Fisher, USA), (see Supplementary Table S1 for primers and PCR protocols). Subsequently, equimolar concentrations of 16S and ITS2 amplicons of each sample were pooled and barcoded (Ion Xpress™ Barcode Adapters kit, Thermo Scientific, USA). Barcoded samples were quantified and pooled (Ion Library TaqMan™ Quantitation kit, Thermo Scientific, USA), resulting to an enriched library for sequencing using Ion Studio S5 sequencing platform (Ion 520™ & Ion 530™ Kit-OT2 kit, Ion 520 chip, Ion Studio S5 Thermo Fisher, USA). Sequenced reads were demultiplexed and QC-, adaptor-, and barcode trimmed using Ion Torrent Suite prior to MG-RAST [20] deposition under project number mgp98852 (<https://www.mg-rast.org/linkin.cgi?project=mgp98852>). Taxonomy was assigned using SILVA SSU database (version 138.1) at 97% identity (e value 10⁻⁵) using standard MG-RAST quality control (dynamic error removal (DRISEE), dynamic trimming (DYNAMICTRIM), denoising and normalization (FASTQ-MCF)).

2.7. Statistical analyses

Lentil morphological measurements assessed were analyzed using Multivariate Analysis of Variance (MANOVA) to detect statistically significant differences among the measured variables, according to Wilks' Lambda test. Correlation analysis of morphological traits (shoot biomass, root biomass, shoot height, root length, root/shoot, nodules, and AMF) assessed were calculated using Pearson's coefficient and depicted with a heatmap with "GGally" package. The aforementioned analyses were performed with R software version 4.2 in R Studio desktop using R version 4.2.2 [21].

Lentil rhizosphere microbiome was evaluated statistically for relative abundance (phylum level) and diversity indices (genus level; Chao1, Shannon (H) and Simpson (D) indices), using the *phyloseq* package of R Studio [22] for similarity between samples (β -diversity), using a Bray-Curtis dissimilarity distance matrix that was depicted with PCoA (Principal Coordinate Analysis), using the *phyloseq* package as mentioned above. Furthermore, the number of common species among the samples was depicted with Venn diagrams [23] and rarefaction curves were calculated and depicted with *vegan* package [24]. Illustrations were prepared using *ggplot2* package [25]. All statistical analyses were performed in R Studio environment. All *p* values <0.05 were considered statistically significant.

3. Results

3.1. Assessment of plant morphological characters

The Eglouvis landrace samples exhibited on average 30% lower above-ground biomass when compared to commercial cultivar Demetra. Subsequently, Eglouvis samples had on average 35% lower shoot height than Demetra. These differences were statistically significant Figure 1 (a). Interestingly, Eglouvis root length and root-to-shoot ratio was on average greater than Demetra, and those differences were statistically significant as depicted in Figure 1(a). Furthermore, Eglouvis root-related indexes, including nodules and AMF, were greater and statistically significant compared to Demetra, respectively.

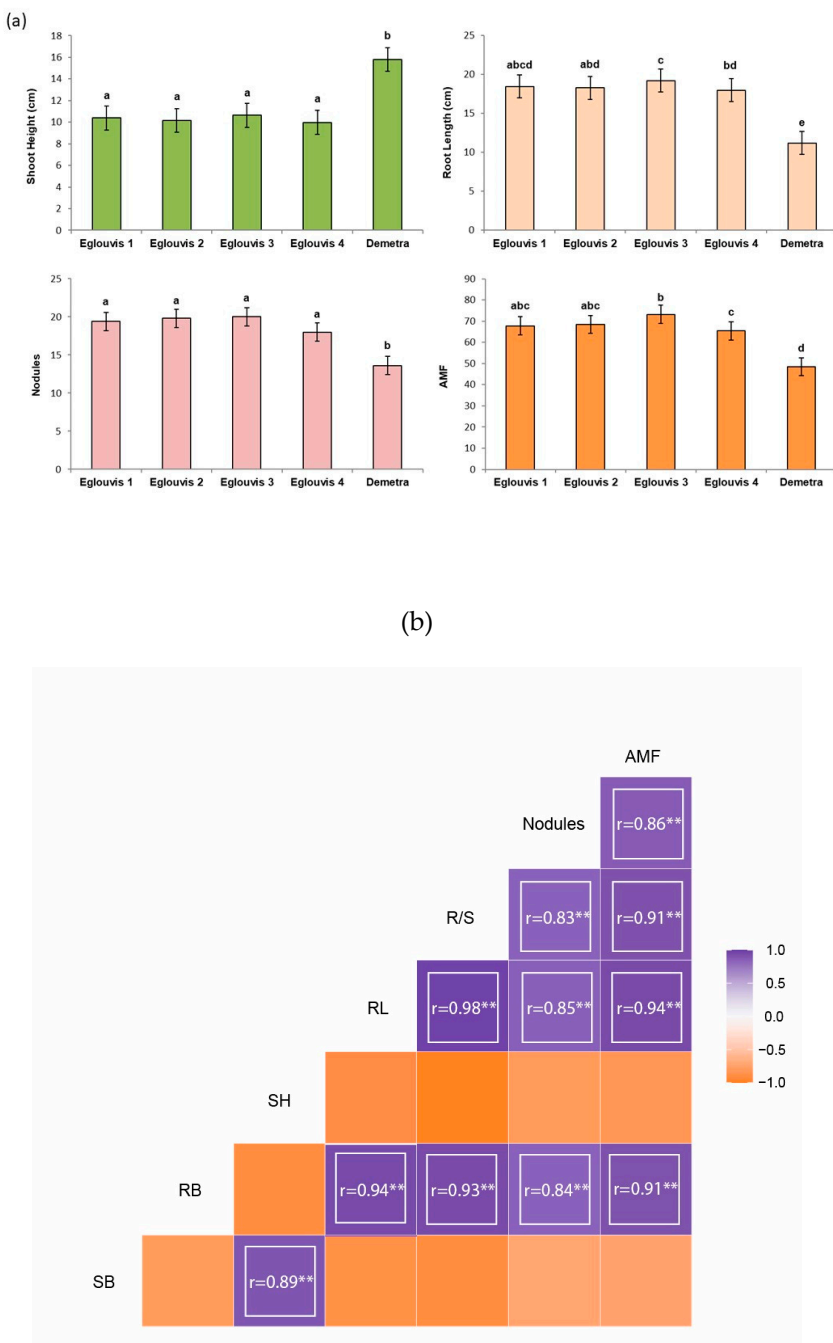


Figure 1. Lentil plant morphological properties: Shoot height (SH), Shoot biomass (SB), Root biomass (RB), Root length (RL); Nodules, arbuscular mycorrhizal fungi (AMF). (a) Barplots of shoot height, root length, nodules, and AMF. Values that share no common letter are significantly different according to Tukey’s HSD ($p < 0.05$); (b) Pearson’s correlation plot of the morphological measurements ($**p < 0.01$).

Significant correlations were detected among the morphological traits according to Pearson’s correlation coefficients Figure 1 (b). The highest positive correlations were observed between root length - root/shoot (0.98) and root length - root biomass (0.94). Interestingly high correlations were also observed between root length-AMF (0.94) and root biomass-AMF (0.91). Following were correlations of nodules to root length (0.85), to root-biomass (0.84) and to root/shoot (0.83), indicating that root traits are key drivers of nodulation in lentil.

3.2. Sequence analyses

Microbial diversity among genotypes

Out of 288462 sequence reads (approx. 58000 reads per sample), 836 different operational taxonomic units (OTUs) were identified excluding singletons. Because of ITS high sensitivity several eukaryotic organisms such as plants, nematodes and mammals were also identified. Therefore, the following phyla were excluded from the analysis, Arthropoda, Nematoda, Streptophyta and Chordata. From the remaining OTUs (803) we used 733 OTUs from the most abundant phyla for further statistical analysis. The overall microbiome consisted of 87% bacteria, 9% eukaryota including fungi and 4% archaea. The most abundant bacterial phyla were Actinobacteria (30%), followed by Proteobacteria (19%) and Firmicutes (18%) (Figure 2). Archaeal phyla consisted of Crenarchaeota and Thaumarchaeota that were identified with 4502 total reads. For all samples, rarefaction curves reached a plateau after approximately 15000 reads, indicating sufficient sequencing depth (Figure S1) for further diversity analysis of the obtained datasets. Eglouvis 3 displayed the most abundance while Demetra, which used as control, the least. Eglouvis 1 and Eglouvis 2 displayed almost the same abundance with almost 300 species.

The presence of *Kabatiella microsticta*, a plant pathogen also known as *Aureobasidium microstictum* (Bubák), was interestingly noticeable only in sample Eglouvis 4 identified by a large number of reads (12640). Members of *Kabatiella* spp. belong to fungal phylum Ascomycota, which is reported to cause leaf streak on maize, ornamentals plants (*Hemerocallis* spp.). Recent studies reported the presence of this pathogen in China and in Norway [26]. Due to the extremely large number of *Kabatiella* spp. reads in Eglouvis 4, this pathogen was excluded from the analysis (relative abundances including *Kabatiella* spp. are presented in Figure S2). Furthermore, our sequencing analysis revealed several important pathogens known to infect legumes. *Verticillium dahlia*, which is a soil-borne pathogen that causes verticillium wilt, was detected in all samples at 7% on average. More plant pathogens found including the *Aspergillus niger* (approx 0.02%), *Davidiellatassiana* (in Eglouvis 3; 0.01%), *Myrothecium* spp. (*M. verrucaria*, *M. roridum* and *M. gramineum*) approx. 0.12%, and *Phytophthora* spp. (*P. infestans*, *P. ramorum*, *P. sojae*) approx. 0.16% (Figure S3).

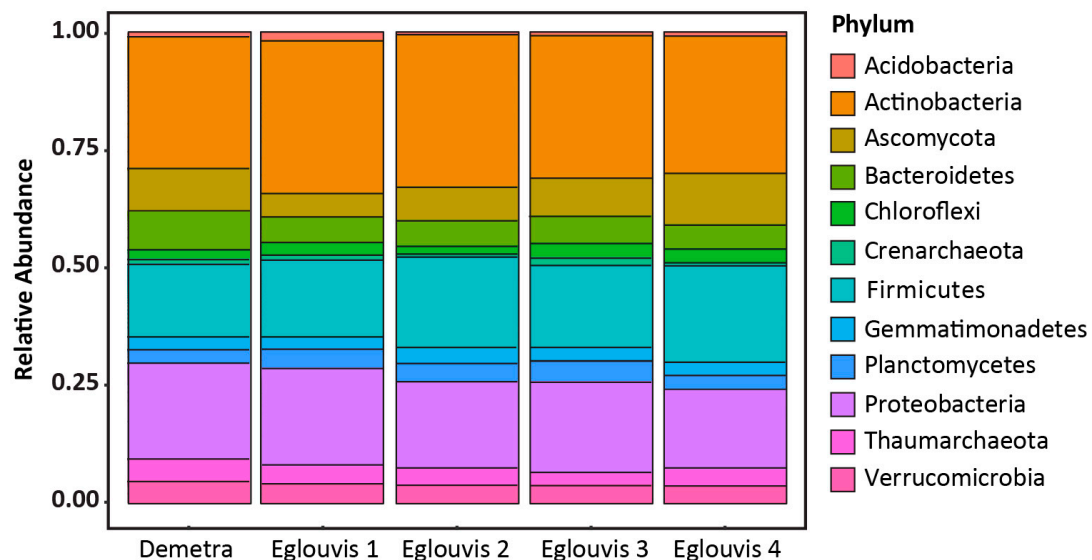


Figure 2. Rhizosphere microbiome relative abundance at phylum level, illustrating the 12 most abundant phyla of the targeted lentil soil microbiomes.

We observed diverse microbiomes associated with the rhizospheres of Eglouvis samples and Demetra. Among all targeted rhizosphere microbiomes, Eglouvis 3 had the greatest α diversity; 467, 4.590, and 0.979 for Chao1, Shannon and Simpson indices, respectively (Figure 3). Eglouvis samples

had on average greater α diversity indices than the control Demetra (Figure 3). Further α diversity indices are reported in Table S2. Differences in β diversity at phylum level (Bray-Curtis) were illustrated with PCoA analysis (Figure 4). The first two PCoA axes explained approximately 73% of the total variation within the rhizosphere microbiome. Eglouvis samples (1 – 4) were ordinated distant to Demetra and clustering analysis separated the microbiome dataset in three groups: group *a* consisted of Eglouvis 3 and 4, group *b* of Eglouvis 1 and 2, and group *c* of Demetra. Furthermore, we assessed whether differences in β diversity were associated with plot distance (sampling distance) and typical physiological plant traits including shoot and root biomass, root length, thousand seed weight, arbuscular mycorrhiza fungal colonization and rhizobia nodules abundance using Mantel correlation and redundancy analysis, respectively. Plot distance explained approximately 35% of the variation in rhizosphere diversity, thus this correlation was not significant (Mantel $r=0.345$, $p=0.17$). While the correlation between explanatory variables (plants traits) and response variables (rhizosphere microbiome) was strong (Mantel $r=0.81$) and this association was marginally significant ($p=0.09$).

Besides the clear differences in α and β diversity among the lentil Eglouvis landrace samples and the control cultivar Demetra, we mined our datasets for common species that could be part of a core microbiome (Figure 5). The Eglouvis 3 and 4 (indicated as Group *a*) shared ~28% of the detected OTUs and ~20% with Demetra (Group *c*). The Eglouvis 1 and Eglouvis 2 (comprising Group *b*) shared ~24% of the detected OTUs with ~19% of them being common with Group *c* (Demetra). In both sets the Eglouvis samples had high portions of unique OTUs, 28% and 23% in set *a*, and 23% and 24% in set *b*. While Demetra had a portion of 11% unique OTUs in set (*a*) and 19% in set (*b*). Tables of relative abundances for the 2 groups at phylum level are presented at supplementary material (Table S3).

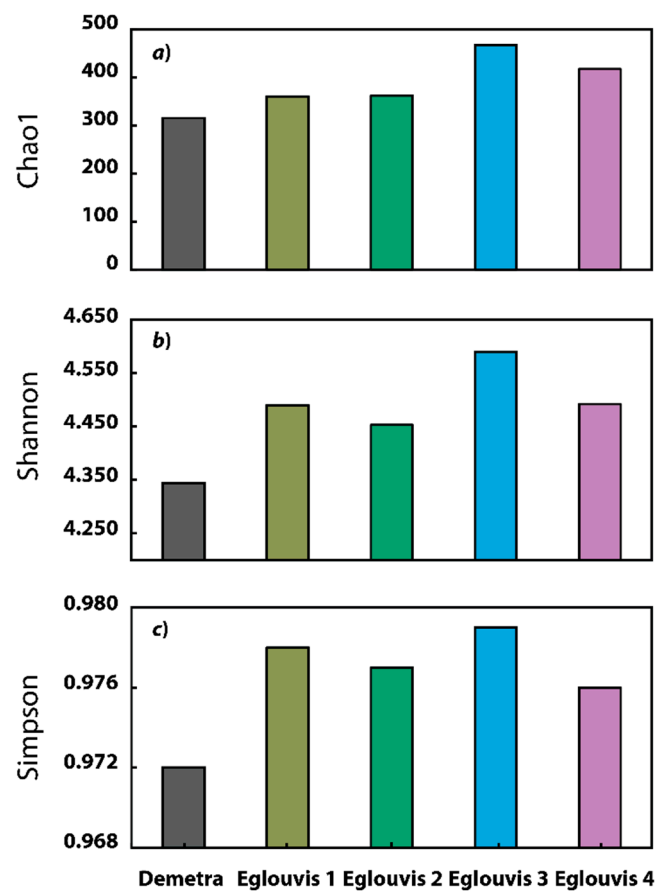


Figure 3. Metrics of α diversity (a) Chao1, (b) Shannon and (c) Simpson index, for the commercial cultivar (Demetra), and Eglouvis landrace (Eglouvis 1 – 4).

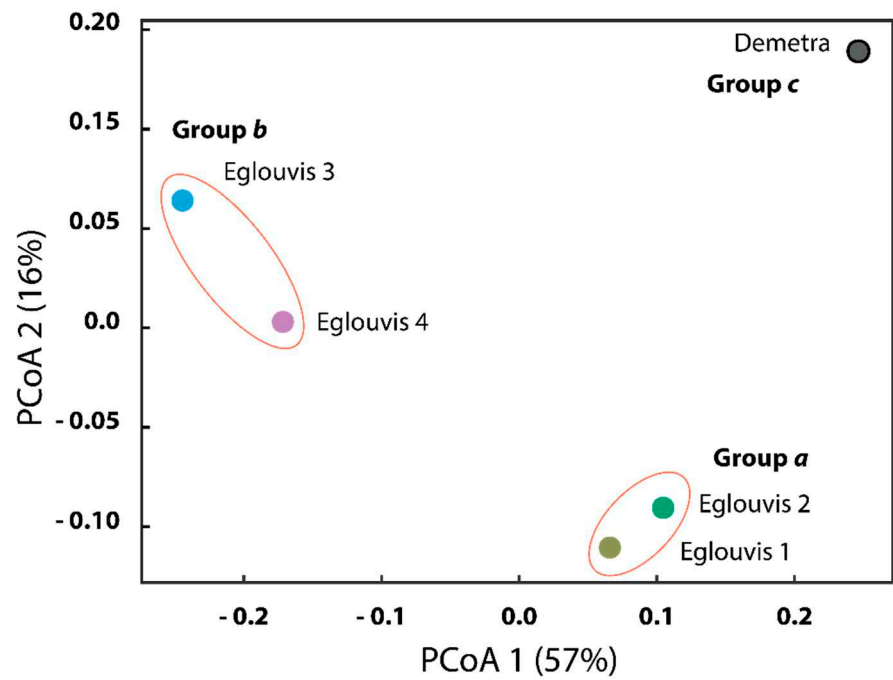


Figure 4. PCoA of lentil genotypes constructed using Bray-Curtis dissimilarity matrix.

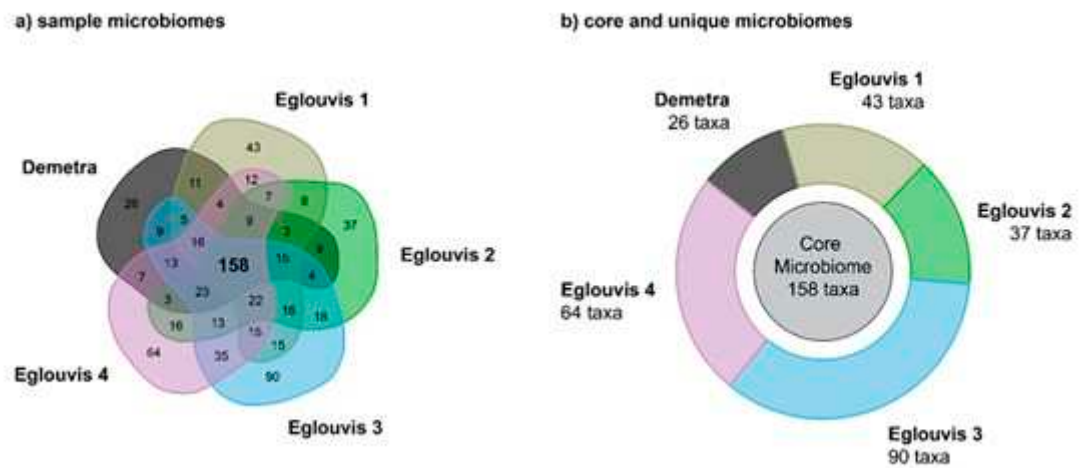


Figure 5. Diagrams showing the relations based on microbial OTUs among samples; a) Venn diagram of shared taxa, and b) donut diagram of shared (core) and unique microbiomes.

Unique microbial taxa

Unique bacterial and fungal taxa were identified in higher numbers in landrace samples compared to the modern cultivar. Specifically, the unique bacterial taxa present in the Eglouvis 1-4 rhizosphere microbiome samples ranged 38-88 with the Eglouvis 3 sample exhibiting 88 bacterial taxa in comparison to Demetra presenting 25 (Table 3). On the other hand, far fewer fungal taxa were identified as unique in all samples ranging from 0-2. Thus, the total number of unique taxa identified in all samples ranged from 37-90 with the Eglouvis 3 sample hosting the largest number (90) of unique taxa and Demetra the smallest 26.

Table 3. Number of unique bacterial and fungal taxa.

Sample	Bacterial	Fungal	Total
Eglouvis 1	41	2	43
Eglouvis 2	37	0	37
Eglouvis 3	88	2	90
Eglouvis 4	62	2	64
Demetra	25	1	26

Following the partitioning of major free-living N₂ fixing bacterial taxa was assessed among samples at the genus level. The percentage of each N₂ fixing bacterial genus detected in the rhizosphere microbiome of each sample is depicted in Figure 6. Interestingly beyond the *Rhizobium* and *Bacillus* genera present in high amounts, a number of other key nitrogen fixers were also identified, with most of them present in the landrace samples. More specifically, the commercial variety had the least nitrogen-fixing taxa (942), than Eglouvis 1 – 4 (1433 – 3890), comprising nearly 8 to 15% of the sequenced taxa. Roughly a two-fold greater abundance of *Nitrospira*, *Paenibacillus*, *Rhodococcus* and *Variovarax* spp. were found in rhizosphere samples of Eglouvis 1 relative to Demetra. The abundance of *Azospirillum*, *Flavobacterium*, and *Pseudomonas* spp. was approximately two-fold less in Eglouvis 1 compared to Demetra rhizosphere samples. For Eglouvis 2, *Arthrobacter*, *Paenibacillus*, and *Stenotrophomonas* spp. were 50% more abundant than in Demetra. A 50% reduction was observed for taxa belonging to the genera of *Nitrospira*, *Pseudomonas*, *Rhizobium* and *Rhodococcus* spp. when compared to Demetra rhizosphere samples. For Eglouvis 3, the abundance of *Arthrobacter*, *Methylobacterium*, *Nitrospira*, *Paenibacillus*, and *Stenotrophomonas* spp was greater than 50%, when compared to Demetra. Interestingly *Azotobacter* spp were identified only in Eglouvis 3 sample. Lastly, in the rhizosphere sample of Eglouvis 4, greater abundance (≤50%) was observed for *Paenibacillus*, *Rhodococcus* and *Variovorax* spp., and a noticeable reduction in *Azospirillum*, *Burkholderia*, *Flavobacterium*, and *Methylobacterium* spp. than Demetra. The abundance of *Bacillus* spp. remained unchanged through all samples and comprised about 50% of the nitrogen fixing taxa.

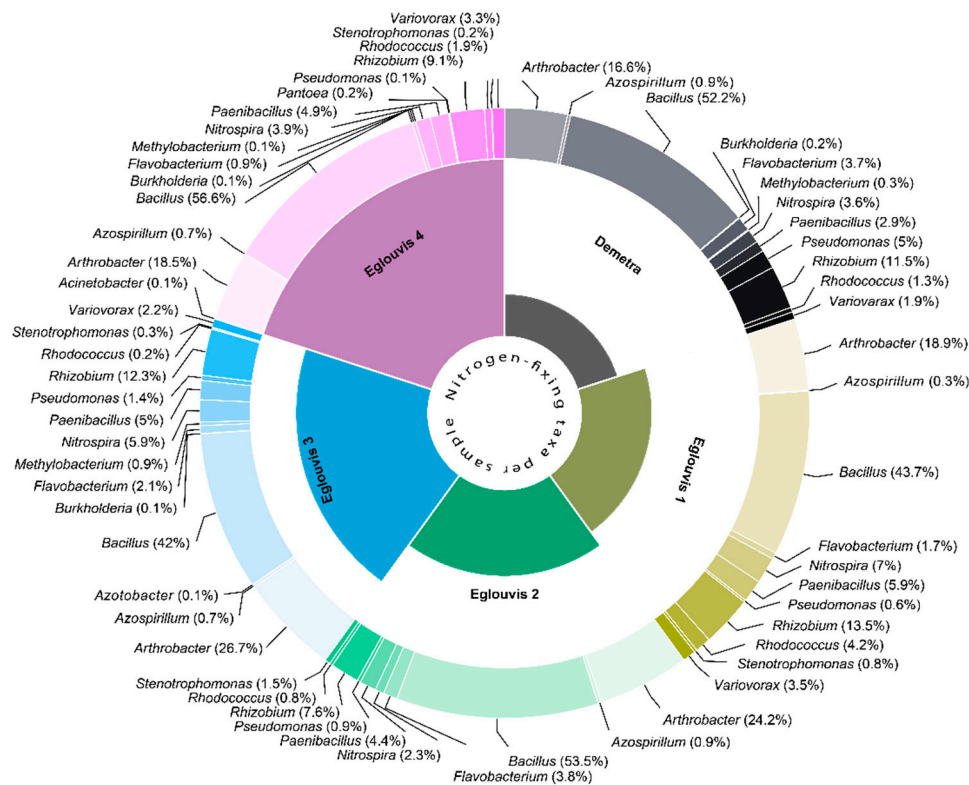


Figure 6. Distribution and partitioning of major N₂-fixing species among the five lentil rhizosphere samples identified by sequencing 16 rDNA gene. Pie sectors size indicate the relative abundance of species.

4. Discussion

Landraces are defined as dynamic populations of a cultivated plant that has historical origin, distinct identity and lacks formal crop improvement, as well as often being genetically diverse, locally adapted and associated with traditional farming systems [27]. Studies of lentil landraces reported high level of genetic diversity in Greek germplasm when compared with germplasm from other Mediterranean countries with other agro-climatic environments [28,29,30]. The lentil Eglouvis is a landrace with high level of genetic variation and unique genetic background that does not overlap with that of Demetra when examining individuals, or even bulk samples with molecular markers [2]. As studies on the rhizosphere microbial diversity among legume species and among cultivars are emerging, our understanding of how the landrace genotype may impact this diversity remains scarce. Furthermore, seeded material may act as a vertical transmission of microbiome [8] in modern cultivars. However, little is known about landraces and the impact of these dynamic genetic populations of genotype(s) on the rhizosphere microbial diversity. Thus far, studies in crops and legume species have shown that soil type, environment and genotype may impact the rhizosphere microbiome diversity [12,15,30,31]. In our design we assessed the rhizosphere microbial community of the lentil landrace Eglouvis samples originated from three distinct systems; a) as seed material obtained from conventional- and b) organic-farming system, and c) a genebank sample, all assessed under the same field and environmental conditions during the same cultivation period. The commercial modern cultivar Demetra was used as a reference to discern the plant genotype effect on the rhizosphere microbiome structure enabling a direct and uniform evaluation.

Studies have shown that plant rhizosphere comprises of diverse and distinct microbial communities regulating plant growth, survival to varying environmental conditions and resistance to plant pathogens. In this study we used the 16S rRNA gene and ITS2 regions to uncover the impact of landrace origin and farming system on the rhizosphere microbiome structure and diversity. To exclude any masking effects of environmental attributes, samples were cultivated in proximity under

the same field conditions during the same cultivation period following agronomic practices of non-chemical inputs including fertilizers and pesticides. We observed significant differences in plants traits and rhizosphere microbiomes among the studied genotypes indicating that genotype and seed origin could act as important factors regulating plant-soil microbial interactions.

4.1. Plant traits impact microbial diversity

We found differences in commonly measured physiological traits such as root-length, rhizobial nodulation and arbuscular mycorrhizal fungal colonization. The Eglouvis landrace root length was 25% longer than the commercial cultivar in all samples assessed. Root morphology could be regulated by environmental conditions i.e., climate and soil fertility [33,34]. Under drought or nutrient limiting conditions lentils may develop longer root systems to scavenge available soil moisture or nutrients [35]. Considering that all lentil genotypes were cultivated under the same conditions in proximity, the landrace Eglouvis samples, that exhibited longer root system, could withstand longer drought conditions, and tolerate nutrient-poor soils. Another aspect of root morphology is linked to nitrogen fixation. Roots provide the ground plant-surface for rhizobial nodulation and AMF colonization contributing to nutritional benefits for legume growth. Thus, genotypes with longer root systems exhibit a two-fold potential, primarily for accessing relatively more soil nitrogen and secondly for hosting more rhizobial and mycorrhizal species per root length. In this study, soil nitrogen was initially low, and none was applied during the cultivation period following local agricultural practices. Therefore, all nitrogen used by the lentil plants is thought to become from nodules activity and from nitrogen uptake. Specifically, it was observed that the Eglouvis landrace possessed more rhizobia nodulation and mycorrhizal colonization than the commercial cultivar Demetra. It is suggested that root morphology, may additionally influence rhizosphere microbiome other than root nodulation and colonization [36,37,38]. In our study we observed that the longer root system of Eglouvis landrace influenced the assembly of rhizosphere microbes. The influence of root morphology within landraces should be further investigated in a holistic approach, considering the temporal effects on a large set of root morphology traits.

4.2. Microbial Diversity

Research studies have demonstrated that different plant species host distinct rhizosphere microbiomes communities [8,39]. Changes in rhizosphere microbiome were also evident in cropping systems under cereal – legumes rotation [40,41]. In previous studies, significant interactions of environment x crop and crop x generation were found [18,32,42]. However, a considerable part of the variation remains unexplained, and it was attributed to unmeasured environmental variables or genetic attributes such as genotype/cultivar [18,39,40,42]. Recently, the role of genotype as an important factor shaping the rhizosphere microbiomes has been appreciated for legumes [32] as well as for non-legumes such as wheat [17]. Studies showed that lentil crops select their rhizosphere microbiome from the surrounding soil, allowing endophytes to colonize roots, stems, and seeds, that in turn may inherit or re-inoculate a crop-specific microbiome. Similarly, to these and other studies [43,44] we unearthed microbial taxa belonging to the Actinobacteria, Proteobacteria, Firmicutes and Chloflexi, involved in biological N₂-fixation and nitrogen cycle (*Rhizobiales*, *Arthrobacter*, *Nitrosospora* spp. etc) and in phosphorus cycling and organic matter decomposition process (*Firmicutes* and *Chloroflexi* spp. etc). Proteobacteria and Bacteroidetes are classified as copiotrophic groups [45] and are commonly detected in the rhizosphere [46]. Ascomycota prevailed from fungi phyla. Similar findings were observed in legumes [18,34] and non-legumes rhizosphere [47].

Lentil as a legume species exhibits an active close association with nitrogen fixing bacteria including the well-known rhizobia, species, as main inhabitants of the legume nodules orchestrating the symbiotic N₂ fixation. Besides the typical rhizobia inhabitants, legume nodules may harbor also other nitrogen fixers [48]. Recent studies in the leguminous *Dalbergia odorifera* have shown that non-rhizobial bacteria were detected in the host's nodules representing 32 genera. Noteworthy that these non-rhizobial bacteria were predominant in the N-omitted potting mix with a relative abundance of 56–87%. Thus, it is advocated that legume nodules could be inhabited by a high diversity of non-

rhizobial species, that play a critical role in nodulation and N₂ fixation of the leguminous host. This diversity of nodule dwellers includes Alphaproteobacteria, Betaproteobacteria, Gammaproteobacteria and genus Rhodococcus from phylum Actinobacteria [49]. In our findings the order Rhizobiales (Alphaproteobacteria), classes Alphaproteobacteria (including unclassified), Betaproteobacteria, Gammaproteobacteria and the genus Rhodococcus were most abundant in the Eglouvis samples and may influence the formation of mycorrhiza and nodules assessed in these samples compared to the commercial cultivar.

Remarkably genus *Stenotrophomonas* was present only in Eglouvis samples. The genus is a Gram-negative bacteria and member of the Xanthomonadaceae family. The *Stenotrophomonas maltophilia* was recently recognized for its plant growth promoting rhizobacterial (PGPR) ability and bioactivities against biotic and abiotic stress in sedge species *Cyperus laevigatus* and wheat [50]. Recent studies in peanut (*Arachis hypogea*) a legume species, have demonstrated that *S. maltophilia* increased plant growth, antioxidant levels, scavenging, and stress tolerance under N₂ deficit condition, underscoring its role as an efficient PGPR for growing agricultural crops [51].

Furthermore, Eglouvis samples exhibited a higher number of *Variovorax* spp, bacteria known for their growth promoting effect on plants due to the presence of two enzymatic systems, nitrilase/ and nitrile hydratase/amidase, that convert indole-3-acetonitrile (IAN) to the important plant hormone indole-3-acetic acid (IAA) and to the presence of nitrogen fixation ability and [52]. The later is further enhanced in Eglouvis samples by the presence of *Azotobacter* spp, a PGPR member, widely known for its alternative nitrogenases along with the presence of conventional nitrogenase, distinguished by the *nif* genes complex, as well as for its ability to release siderophores [53,54].

It's important to highlight the presence of archaea in lentil rhizosphere, which is often overlooked, and specifically those archaeal groups involved in nitrogen and carbon cycling. Here, we observed members of *Crenarchaeota* and *Thaumarchaeota* in relative greater abundance in Eglouvis 3, 4, 1 and 2 than in the commercial cultivar. It is understood that archaeal hold an important role in promoting plant health, but little is known about the mechanisms of such interaction [55,56]. It is speculated that archaeal contribute to functions such as auxin production, protection against biotic and abiotic factors, interaction with fungi and secondary metabolites production which protect plants against pathogens. Even though there is limited evidence in support of this theory [42] studies emerging, including the current, prompt to further investigate the active role of archaeal populations in lentil rhizosphere as well as in other crops.

Inter-species variation in the host plant genome has been found to have relatively small effect on the associated microbial communities compared with other factors such as environmental variation [6,51,52]. In this work, we found that the rhizosphere bacterial communities of Eglouvis samples were divergent compared to Demetra regarding the amounts of participating N₂ fixing bacteria. The observed differences in partitioning underscore a vital role of nitrogen fixing bacteria in shaping the lentil rhizosphere that requires further investigation. As some species are present only in the Eglouvis samples such as the *Acinetobacter*, *Azotobacter*, and *Stenotrophomonas*, while other exhibit higher partitioning in Eglouvis samples compared to Demetra, such as the *Arthrobacter*, *Bacillus*, *Paenibacillus*, *Rhizobium*. We therefore further propose that differences in rhizosphere bacteria between landrace and varieties could be derived from differences in recruitment (either actively or passively) of local bacteria. Yet, the molecular mechanisms that orchestrate the recruiting of rhizosphere microbiota is unknown as well as how the genetic variation of the landrace governs the microbiome variation. In this work, seeds were expected to have nominal quantities of bacteria associated with them (since reads were dominated by host DNA). Whether such differences may impact microbiota recruitment beyond the host's exudates remains to be thoroughly characterized. Undoubtedly, differences in root architecture were noted between the landraces and the commercial cultivar, underpinning one mechanism which might differentiate their associated microbial communities; however, the implication of other mechanisms that may impart the observed differences were also reported for other crops such maize [6,31]. Legumes initiate plant-microbe interactions in the rhizosphere through communication pathways involving root-exudates known as flavonoids which trigger the production of nodulation by compatible rhizobia symbionts. Mounting

evidence indicate that these flavonoids not only initiate symbiosis with rhizobia but also play a central role in shaping legume rhizosphere community structure [16,59]. Whether this quorum sensing of rhizosphere microbiota assemblages is regulated also by intra-bacterial communication networks remains to be explored, as studies have shown that lentil crop influences nutrient acquisition in subsequent crops [10,54]. Nutrients are generally known to be more abundant in the rhizosphere, than in bulk soil. Thus, the development of bacterial phyla favored near lentil roots is detected as the result of microbial consortia of communicating patterns that are becoming apparent.

4.3. Lentil microbial pathogens

Although no visual symptoms were detected in the field trial, the sequencing analysis revealed potential pathogenic taxa of less than 2% relative abundance. Specifically, members of *Verticillium*, *Aspergillus*, *Davidiella*, *Myrothecium* and *Phytophthora* spp. were found. This could possibly indicate that landraces have developed resistance to those pathogenic microbes or that pathogens remained dormant. The presence of pathogens within the lentil rhizobiome is not uncommon. Sequencing of lentil genotypes in Canada and India revealed several potentially pathogenic taxa within the rhizosphere microbiome as well [12,15]. Since no visual symptoms were observed, it is important to decipher whether the presence of the identified pathogens is circumstantial or associated with certain lentil genotypes' ability to suppress the pathogens [60,61].

On the other hand, the presence of *Aureobasidium microstictum* in the rhizosphere of the Eglouvis 4 sample obtained from the gene bank, raises important questions and concerns. Specifically, its presence highlighted an important parameter of seed storage quality that is becoming apparent with the use of new technologies such as the high-throughput sequencing (HTS) techniques [8]. Standard methods and protocols of seed evaluation is generally macroscopic, often aided using stereoscope. On the other hand, most of the pathogens are transmitted through seed, while others preexist in the field. Seed-borne or soil-borne pathogens can survive for long periods [62]. The fact that seeds were not disinfected, nor any pesticides were applied to the field could potentially enriched certain pathogens. However, as the presence of the particular pathogen was only detected in the sample obtained from the gene bank, emphasizes the need for further research in deciphering the presence of seed-associated microbiomes through high-throughput sequencing.

4.4. Practical implications

The "rhizosphere effect" is a commonly accepted model of understanding microbial assemblage and diversity within the plant's rhizosphere. It is assumed that plants may be selecting certain microbial taxa through chemical signals to meet specific host needs including nutrient acquisition and pathogen suppression. Thus, plants modulate and regulate the structure and composition of their microbial communities shaping specialized ecological niches for microbial assemblages that might have positive (mutualistic), neutral (commensalistic), or deleterious (pathogenic) effects on plant fitness [63].

However, to decipher the molecular mechanisms that regulate and select for microbial abundance requires further investigation. Earlier studies in lentil rhizobiome indicated that genotype and generation are important parameters for understanding the interaction of plant-soil systems [15,18,31]. In this study we demonstrated that landrace germplasm is also an important factor determining or regulating the above interaction. Furthermore, we illustrated that landrace seed origin is also essential in understanding and deciphering the complex rhizosphere effect, as the organic farming system seems to bequeath the seeds with better recruiting ability of beneficial bacterial taxa than the counterpart of conventional farming.

Today, the majority of crops produced in agriculture are established by seed sowing. This process conceals that seed-transmitted microbiome may take place, as a driver of root-associated microbiome in a seed established plant-crop. Studies have shown that seeds are major players of microorganisms' vertical transmission from one plant generation to another and consequently act as a primary source of inoculum for crops [64]. The primary interest in this seed vertical transmission was gained by plant pathogens due to their detrimental impacts on crop yields and quality. However,

seeds transmit a variety of microorganisms that represent transient colonizers of the seed soil habitat or alternatively be transmitted to the newly developed plantlet influencing seedling-associated assemblages. Undoubtedly crop fertilization and chemicals inputs in agriculture crops assured profitable crop yield that inevitably led to overlooking the role of seeds' transmittal ability on soil rhizosphere-associated microbes. In this study we showed evidence of landrace associated attributes (seed origin, organic and conventional farming system) affecting root microbiomes of lentil. Interestingly, a strong correlation between lentil physiological traits and rhizosphere microbiome was observed, indicating an interplay among root-rhizobiome and landrace plant traits that remains to be elucidated.

This primary study demonstrated significant differences in rhizosphere microbial diversity that was linked to Eglouvis landrace, under the same environment, soil type and agricultural practices. Building upon our findings, further research is needed to dissect how the dynamic diversity enclosed in lentil landraces may affect soil attributes including soil microbial diversity and nutrient cycles to sustainably support soil services and function and food safety.

5. Conclusions

Metagenomic profiling of lentil rhizosphere-microbiome under the same field conditions unveiled a 30% common microbiome among samples of the landrace Eglouvis and the modern commercial cultivar Demetra, indicating the presence of a core rhizosphere for lentil plants under the same environmental conditions. Remarkably, distinct differences unveiled for all diversity indices among samples of the Eglouvis landrace and the commercial cultivar Demetra support the hypothesis that a landrace sustains higher microbiota diversity, concurred to its dynamic genetic diversity compared to a modern improved cultivar.

Within the landrace, it was evident that origin of the sample affects microbiome diversity suggesting an important role of the farmer practices and farming system conditions. Higher microbiota diversity was unveiled in the landrace sample derived from organic farming, suggesting that organic cultivation could be a fundamental tool for conservation of microbial genetic resources, expansion of valuable soil microbiota and crop fortification especially in degraded soils due to intensive monoculture and heavy fertilization of contemporary agriculture. A gene bank sample that was included in the study, displayed high numbers of a plant pathogen, suggesting that special care should be taken in gene bank standard operational procedures to avoid seed contamination.

As soil biodiversity and agriculture sustainability are closely intertwined fostering food safety the study results underscored key drivers of soil x landrace interactions highlighting their vital role in biodiversity both of landrace as a dynamic genetic pool and of the soil microbial assemblages for maintaining water and nutrient availability for plants in a changing climate.

Supplementary Materials: The following supporting information can be downloaded at the website of this paper posted on Preprints.org, **Figure S1:** Rarefaction curves of lentil samples; **Figure S2:** Relative abundances of lentil samples for the 12 most abundant phyla including pathogen *Kabatiella microsticta*; **Figure S3:** Relative abundances of lentil samples for the pathogens at genus level; **Figure S4:** Relative abundances of lentil samples for N₂-fixation bacteria at family level; **Table S1:** Amplicon primers, PCR reagents and PCR cycling program; **Table S2:** Metrics of α diversity among the studied genotypes; Eglouvis landrace (Eglouvis 1 – 4) and the commercial cultivar Demetra; **Table S3:** Relative abundances of common taxa at phylum level for (a) Demetra, Eglouvis 1 and Eglouvis 2 and (b) Demetra, Eglouvis 3 and Eglouvis 4.

Author Contributions: Conceptualization, P.V.M.; Methodology, A.G., G.G., A.N.P. and P.V.M.; Project Administration: P.V.M.; Investigation and formal analysis: A.G., G.G. and P.V.M.; Funding acquisition: P.V.M.; Writing—original draft preparation, A.G. and G.G.; Writing—review and editing, A.N.P. and P.V.M. All authors have read and agreed to the published version of the manuscript.

Funding: This research has been financed by national funds.

Data Availability Statement: Data supporting reported results can be found, under project number mgp98852 under the following <https://www.mg-rast.org/linkin.cgi?project=mgp98852>

Acknowledgments: Authors wish to thank Dr Murad Awad for the support with microbiome sequencing and the laboratory staff of HAO-DEMETER for soil chemical analysis.

Conflicts of Interest: The authors declare no conflict of interest.

References

1. *The Global Economy of Pulses*; FAO, **2019**. <https://doi.org/10.4060/I7108EN>.
2. Tsanakas, G. F.; Mylona, P. V.; Koura, K.; Gleridou, A.; Polidoros, A. N. Genetic Diversity Analysis of the Greek Lentil (*Lens Culinaris*) Landrace 'Eglouvis' Using Morphological and Molecular Markers. *Plant Genetic Resources* **2018**, *16* (5), 469–477. <https://doi.org/10.1017/S1479262118000096>.
3. Polidoros, A. N.; Avdikos, I. D.; Gleridou, A.; Kostoula, S. D.; Koura, E.; Sakellariou, M. A.; Stavridou, E.; Gerasopoulos, D.; Lagopodi, A.; Mavromatis, A.; Mylona, P. V.; Nianiou-Obeidat, I.; Vlachostergios, D. Lentil Gene Pool for Breeding. In *Cash Crops*; Priyadarshan, P. M., Jain, S. M., Eds.; Springer International Publishing: Cham, **2022**; pp 407–475. https://doi.org/10.1007/978-3-030-74926-2_11.
4. Sakellariou, M.; Psiloglou, B. E.; Giannakopoulos, C.; Mylona, P. V. Integration of Abandoned Lands in Sustainable Agriculture: The Case of Terraced Landscape Re-Cultivation in Mediterranean Island Conditions. *Land* **2021**, *10* (5), 457. <https://doi.org/10.3390/land10050457>.
5. Cregger, M. A.; Veach, A. M.; Yang, Z. K.; Crouch, M. J.; Vilgalys, R.; Tuskan, G. A.; Schadt, C. W. The Populus Holobiont: Dissecting the Effects of Plant Niches and Genotype on the Microbiome. *Microbiome* **2018**, *6* (1), 31. <https://doi.org/10.1186/s40168-018-0413-8>.
6. Lund, M.; Agerbo Rasmussen, J.; Ramos-Madrigal, J.; Sawers, R.; Gilbert, M. T. P.; Barnes, C. J. RHIZOSPHERE BACTERIAL COMMUNITIES DIFFER AMONG TRADITIONAL MAIZE LANDRACES. *Environmental DNA* **2022**, *4* (6), 1241–1249. <https://doi.org/10.1002/edn3.333>.
7. Awad, M.; Giannopoulos, G.; Mylona, P. V.; Polidoros, A. N. Comparative Analysis of Grapevine Epiphytic Microbiomes among Different Varieties, Tissues, and Developmental Stages in the Same Terroir. *Applied Sciences* **2022**, *13* (1), 102. <https://doi.org/10.3390/app13010102>.
8. Morales Moreira, Z. P.; Helgason, B. L.; Germida, J. J. Assembly and Potential Transmission of the *Lens culinaris* Seed Microbiome. *FEMS Microbiology Ecology* **2022**, *97* (12), fiab166. <https://doi.org/10.1093/femsec/fiab166>.
9. Liu, K.; Bandara, M.; Hamel, C.; Knight, J. D.; Gan, Y. Intensifying Crop Rotations with Pulse Crops Enhances System Productivity and Soil Organic Carbon in Semi-Arid Environments. *Field Crops Research* **2020**, *248*, 107657. <https://doi.org/10.1016/j.fcr.2019.107657>.
10. Pramanik, K.; Das, A.; Banerjee, J.; Das, A.; Chatterjee, S.; Sharma, R.; Kumar, S.; Gupta, S. Metagenomic Insights into Rhizospheric Microbiome Profiling in Lentil Cultivars Unveils Differential Microbial Nitrogen and Phosphorus Metabolism under Rice-Fallow Ecology. *IJMS* **2020**, *21* (23), 8895. <https://doi.org/10.3390/ijms21238895>.
11. Gruet, C.; Muller, D.; Moënne-Loccoz, Y. Significance of the Diversification of Wheat Species for the Assembly and Functioning of the Root-Associated Microbiome. *Front. Microbiol.* **2022**, *12*, 782135. <https://doi.org/10.3389/fmicb.2021.782135>.
12. Brescia, F.; Sillo, F.; Franchi, E.; Pietrini, I.; Montesano, V.; Marino, G.; Haworth, M.; Zampieri, E.; Fusini, D.; Schillaci, M.; Papa, R.; Santamarina, C.; Vita, F.; Chitarra, W.; Nerva, L.; Petruzzelli, G.; Mennone, C.; Centritto, M.; Balestrini, R. The 'Microbiome Counterattack': Insights on the Soil and Root-associated Microbiome in Diverse Chickpea and Lentil Genotypes after an Erratic Rainfall Event. *Environ Microbiol Rep* **2023**, 1758-2229.13167. <https://doi.org/10.1111/1758-2229.13167>.
13. Kuppe, C. W.; Schnepf, A.; Von Lieres, E.; Watt, M.; Postma, J. A. Rhizosphere Models: Their Concepts and Application to Plant-Soil Ecosystems. *Plant Soil* **2022**, *474* (1–2), 17–55. <https://doi.org/10.1007/s11104-021-05201-7>.
14. Berendsen, R. L.; Pieterse, C. M. J.; Bakker, P. A. H. M. The Rhizosphere Microbiome and Plant Health. *Trends in Plant Science* **2012**, *17* (8), 478–486. <https://doi.org/10.1016/j.tplants.2012.04.001>.
15. Bazghaleh, N.; Prashar, P.; Woo, S.; Vandenberg, A. Effects of Lentil Genotype on the Colonization of Beneficial Trichoderma Species and Biocontrol of Aphanomyces Root Rot. *Microorganisms* **2020**, *8* (9), 1290. <https://doi.org/10.3390/microorganisms8091290>.
16. Schaedel, M.; Hidrobo, G.; Grossman, J. From Microns to Meters: Exploring Advances in Legume Microbiome Diversity for Agroecosystem Benefits. *Front. Sustain. Food Syst.* **2021**, *5*, 668195. <https://doi.org/10.3389/fsufs.2021.668195>.
17. Quiza, L.; Tremblay, J.; Pagé, A. P.; Greer, C. W.; Pozniak, C. J.; Li, R.; Haug, B.; Hemmingsen, S. M.; St-Arnaud, M.; Yergeau, E. The Effect of Wheat Genotype on the Microbiome Is More Evident in Roots and Varies through Time. *ISME COMMUN.* **2023**, *3* (1), 32. <https://doi.org/10.1038/s43705-023-00238-4>.
18. Cordero, J.; De Freitas, J. R.; Germida, J. J. Bacterial Microbiome Associated with the Rhizosphere and Root Interior of Crops in Saskatchewan, Canada. *Can. J. Microbiol.* **2020**, *66* (1), 71–85. <https://doi.org/10.1139/cjm-2019-0330>.

19. Vierheilig, H.; Schweiger, P.; Brundrett, M. An Overview of Methods for the Detection and Observation of Arbuscular Mycorrhizal Fungi in Roots [†]. *Physiologia Plantarum* **2005**, *125* (4), 393–404. <https://doi.org/10.1111/j.1399-3054.2005.00564.x>.
20. Keegan, K. P.; Glass, E. M.; Meyer, F. MG-RAST, a Metagenomics Service for Analysis of Microbial Community Structure and Function. In *Microbial Environmental Genomics (MEG)*; Martin, F., Uroz, S., Eds.; Methods in Molecular Biology; Springer New York: New York, NY, **2016**; Vol. 1399, pp 207–233. https://doi.org/10.1007/978-1-4939-3369-3_13.
21. R Core Team, **2021**. A Language and Environment for Statistical Computing; R Foundation for Statistical Computing, 2021. <https://www.R-project.org/> (accessed on 28 August 2023).
22. R Core Team. **2022**. R: A Language and Environment for Statistical Computing. R Foundation for Statistical Computing, Vienna, Austria. <https://www.R-project.org/>.
23. Chen, H.; Boutros, P. C. VennDiagram: A Package for the Generation of Highly-Customizable Venn and Euler Diagrams in R. *BMC Bioinformatics* **2011**, *12* (1), 35. <https://doi.org/10.1186/1471-2105-12-35>.
24. Oksanen, J., Blanchet, F.G., Kindt, R., Legendre, P., Minchin, P.R., O'Hara, R.B., Simpson, G.L., Solymos, P., Stevens, M.H.H. and Wagner, H. Vegan: Community Ecology Package. R Package Version 2.2-0., **2014**. <http://CRAN.Rproject.org/package=vegan>.
25. Wickham, H. *Ggplot2: Elegant Graphics for Data Analysis*, 2nd ed. **2016**; Use R!; Springer International Publishing : Imprint: Springer: Cham, 2016. <https://doi.org/10.1007/978-3-319-24277-4>.
26. Oksanen, A. J.; Blanchet, F. G.; Kindt, R.; Legendre, P.; Minchin, P. R.; Hara, R. B. O.; Simpson, G. L.; Solymos, P.; Stevens, M. H. H. Community Ecology Package. ... *Ecology Package* ... **2012**, No. January, 263.
27. Casañas, F.; Simó, J.; Casals, J.; Prohens, J. Toward an Evolved Concept of Landrace. *Front. Plant Sci.* **2017**, *08*. <https://doi.org/10.3389/fpls.2017.00145>.
28. Lombardi, M.; Materne, M.; Cogan, N. O. I.; Rodda, M.; Daetwyler, H. D.; Slater, A. T.; Forster, J. W.; Kaur, S. Assessment of Genetic Variation within a Global Collection of Lentil (*Lens culinaris* Medik.) Cultivars and Landraces Using SNP Markers. *BMC Genet* **2014**, *15* (1), 150. <https://doi.org/10.1186/s12863-014-0150-3>.
29. Khazaei, H.; Caron, C. T.; Fedoruk, M.; Diapari, M.; Vandenberg, A.; Coyne, C. J.; McGee, R.; Bett, K. E. Genetic Diversity of Cultivated Lentil (*Lens Culinaris* Medik.) and Its Relation to the World's Agro-Ecological Zones. *Front. Plant Sci.* **2016**, *7*. <https://doi.org/10.3389/fpls.2016.01093>.
30. Idrissi, O.; Piergiovanni, A. R.; Toklu, F.; Houasli, C.; Udupa, S. M.; De Keyser, E.; Van Damme, P.; De Riek, J. Molecular Variance and Population Structure of Lentil (*Lens Culinaris* Medik.) Landraces from Mediterranean Countries as Revealed by Simple Sequence Repeat DNA Markers: Implications for Conservation and Use. *Plant Genet. Resour.* **2018**, *16* (3), 249–259. <https://doi.org/10.1017/S1479262117000260>.
31. Brisson, V. L.; Schmidt, J. E.; Northen, T. R.; Vogel, J. P.; Gaudin, A. C. M. Impacts of Maize Domestication and Breeding on Rhizosphere Microbial Community Recruitment from a Nutrient Depleted Agricultural Soil. *Sci Rep* **2019**, *9* (1), 15611. <https://doi.org/10.1038/s41598-019-52148-y>.
32. Brown, S. P.; Grillo, M. A.; Podowski, J. C.; Heath, K. D. Soil Origin and Plant Genotype Structure Distinct Microbiome Compartments in the Model Legume Medicago Truncatula. *Microbiome* **2020**, *8* (1), 139. <https://doi.org/10.1186/s40168-020-00915-9>.
33. Yang, T.; Liu, K.; Poppy, L.; Mulenga, A.; Gampe, C. Minimizing Lentil Harvest Loss through Improved Agronomic Practices in Sustainable Agro-Systems. *Sustainability* **2021**, *13* (4), 1896. <https://doi.org/10.3390/su13041896>.
34. Hartman, K.; Van Der Heijden, M. G.; Roussely-Provent, V.; Walser, J.-C.; Schlaeppi, K. Deciphering Composition and Function of the Root Microbiome of a Legume Plant. *Microbiome* **2017**, *5* (1), 2. <https://doi.org/10.1186/s40168-016-0220-z>.
35. Priya, S.; Bansal, R.; Kumar, G.; Dikshit, H. K.; Kumari, J.; Pandey, R.; Singh, A. K.; Tripathi, K.; Singh, N.; Kumari, N. K. P.; Kumar, S.; Kumar, A. Root Trait Variation in Lentil (*Lens Culinaris* Medikus) Germplasm under Drought Stress. *Plants* **2021**, *10* (11), 2410. <https://doi.org/10.3390/plants10112410>.
36. Pérez-Jaramillo, J. E.; Carrión, V. J.; Bosse, M.; Ferrão, L. F. V.; De Hollander, M.; Garcia, A. A. F.; Ramírez, C. A.; Mendes, R.; Raaijmakers, J. M. Linking Rhizosphere Microbiome Composition of Wild and Domesticated *Phaseolus Vulgaris* to Genotypic and Root Phenotypic Traits. *ISME J* **2017**, *11* (10), 2244–2257. <https://doi.org/10.1038/ismej.2017.85>.
37. Saleem, M.; Law, A. D.; Sahib, M. R.; Pervaiz, Z. H.; Zhang, Q. Impact of Root System Architecture on Rhizosphere and Root Microbiome. *Rhizosphere* **2018**, *6*, 47–51. <https://doi.org/10.1016/j.rhisph.2018.02.003>.
38. Kavamura, V. N.; Robinson, R. J.; Hughes, D.; Clark, I.; Rossmann, M.; Melo, I. S. D.; Hirsch, P. R.; Mendes, R.; Mauchline, T. H. Wheat Dwarfing Influences Selection of the Rhizosphere Microbiome. *Sci Rep* **2020**, *10* (1), 1452. <https://doi.org/10.1038/s41598-020-58402-y>.
39. Lei, S.; Xu, X.; Cheng, Z.; Xiong, J.; Ma, R.; Zhang, L.; Yang, X.; Zhu, Y.; Zhang, B.; Tian, B. Analysis of the Community Composition and Bacterial Diversity of the Rhizosphere Microbiome across Different Plant Taxa. *MicrobiologyOpen* **2019**, *8* (6), e00762. <https://doi.org/10.1002/mbo3.762>.
40. Ellouze, W.; Hamel, C.; Vujanovic, V.; Gan, Y.; Bouzid, S.; St-Arnaud, M. Chickpea Genotypes Shape the Soil Microbiome and Affect the Establishment of the Subsequent Durum Wheat Crop in the Semiarid North

- American Great Plains. *Soil Biology and Biochemistry* **2013**, *63*, 129–141. <https://doi.org/10.1016/j.soilbio.2013.04.001>.
41. Hamel, C.; Gan, Y.; Sokolski, S.; Bainard, L. D. High Frequency Cropping of Pulses Modifies Soil Nitrogen Level and the Rhizosphere Bacterial Microbiome in 4-Year Rotation Systems of the Semiarid Prairie. *Applied Soil Ecology* **2018**, *126*, 47–56. <https://doi.org/10.1016/j.apsoil.2018.01.003>.
 42. Wattenburger, C. J.; Gutknecht, J.; Zhang, Q.; Brutnell, T.; Hofmockel, K.; Halverson, L. The Rhizosphere and Cropping System, but Not Arbuscular Mycorrhizae, Affect Ammonia Oxidizing Archaea and Bacteria Abundances in Two Agricultural Soils. *Applied Soil Ecology* **2020**, *151*, 103540. <https://doi.org/10.1016/j.apsoil.2020.103540>.
 43. Morales Moreira, Z. P.; Helgason, B. L.; Germida, J. J. Environment Has a Stronger Effect than Host Plant Genotype in Shaping Spring *Brassica Napus* Seed Microbiomes. *Phytobiomes Journal* **2021**, *5* (2), 220–230. <https://doi.org/10.1094/PBIOMES-08-20-0059-R>.
 44. Bulgarelli, D.; Schlaeppi, K.; Spaepen, S.; Van Themaat, E. V. L.; Schulze-Lefert, P. Structure and Functions of the Bacterial Microbiota of Plants. *Annu. Rev. Plant Biol.* **2013**, *64* (1), 807–838. <https://doi.org/10.1146/annurev-arplant-050312-120106>.
 45. Serna-Chavez, H. M.; Fierer, N.; Van Bodegom, P. M. Global Drivers and Patterns of Microbial Abundance in Soil. *Global Ecology and Biogeography* **2013**, *22* (10), 1162–1172. <https://doi.org/10.1111/geb.12070>.
 46. Ling, N.; Wang, T.; Kuzyakov, Y. Rhizosphere Bacteriome Structure and Functions. *Nat Commun* **2022**, *13* (1), 836. <https://doi.org/10.1038/s41467-022-28448-9>.
 47. Gqozo, M. P.; Bill, M.; Siyoum, N.; Labuschagne, N.; Korsten, L. Fungal Diversity and Community Composition of Wheat Rhizosphere and Non-Rhizosphere Soils from Three Different Agricultural Production Regions of South Africa. *Applied Soil Ecology* **2020**, *151*, 103543. <https://doi.org/10.1016/j.apsoil.2020.103543>.
 48. Lu, J.; Yang, F.; Wang, S.; Ma, H.; Liang, J.; Chen, Y. Co-Existence of Rhizobia and Diverse Non-Rhizobial Bacteria in the Rhizosphere and Nodules of *Dalbergia Odorifera* Seedlings Inoculated with *Bradyrhizobium Elkanii*, *Rhizobium Multihospitium*-Like and *Burkholderia Pyrrocinia*-Like Strains. *Front. Microbiol.* **2017**, *8*, 2255. <https://doi.org/10.3389/fmicb.2017.02255>.
 49. Martínez-Hidalgo, P.; Hirsch, A. M. The Nodule Microbiome: N₂-Fixing Rhizobia Do Not Live Alone. *Phytobiomes Journal* **2017**, *1* (2), 70–82. <https://doi.org/10.1094/PBIOMES-12-16-0019-RVW>.
 50. Alexander, A.; Singh, V. K.; Mishra, A.; Jha, B. Plant Growth Promoting Rhizobacterium *Stenotrophomonas maltophilia* BJ01 Augments Endurance against N₂ Starvation by Modulating Physiology and Biochemical Activities of *Arachis Hypogaea*. *PLoS ONE* **2019**, *14* (9), e0222405. <https://doi.org/10.1371/journal.pone.0222405>.
 51. Singh, R. P.; Jha, P. N. The PGPR *Stenotrophomonas Maltophilia* SBP-9 Augments Resistance against Biotic and Abiotic Stress in Wheat Plants. *Front. Microbiol.* **2017**, *8*, 1945. <https://doi.org/10.3389/fmicb.2017.01945>.
 52. Sun, S.-L.; Yang, W.-L.; Fang, W.-W.; Zhao, Y.-X.; Guo, L.; Dai, Y.-J. The Plant Growth-Promoting Rhizobacterium *Variovorax Boronicumulans* CGMCC 4969 Regulates the Level of Indole-3-Acetic Acid Synthesized from Indole-3-Acetonitrile. *Appl Environ Microbiol* **2018**, *84* (16), e00298-18. <https://doi.org/10.1128/AEM.00298-18>.
 53. Sumbul, A.; Ansari, R. A.; Rizvi, R.; Mahmood, I. Azotobacter: A Potential Bio-Fertilizer for Soil and Plant Health Management. *Saudi Journal of Biological Sciences* **2020**, *27* (12), 3634–3640. <https://doi.org/10.1016/j.sjbs.2020.08.004>.
 54. Mylona, P. V.; Premakumar, R.; Pau, R. N.; Bishop, P. E. Characteristics of Orf1 and Orf2 in the *anfH* HDGK Genomic Region Encoding Nitrogenase 3 of *Azotobacter Vinelandii*. *J Bacteriol* **1996**, *178* (1), 204–208. <https://doi.org/10.1128/jb.178.1.204-208.1996>.
 55. Taffner, J.; Erlacher, A.; Bragina, A.; Berg, C.; Moissl-Eichinger, C.; Berg, G. What Is the Role of *Archaea* in Plants? New Insights from the Vegetation of Alpine Bogs. *mSphere* **2018**, *3* (3), e00122-18. <https://doi.org/10.1128/mSphere.00122-18>.
 56. Akinola, S. A.; Babalola, O. O. The Fungal and Archaeal Community within Plant Rhizosphere: A Review on Their Contribution to Crop Safety. *Journal of Plant Nutrition* **2021**, *44* (4), 600–618. <https://doi.org/10.1080/01904167.2020.1845376>.
 57. Mittelstrass, J.; Sperone, F. G.; Horton, M. W. Using Transects to Disentangle the Environmental Drivers of Plant-microbiome Assembly. *Plant Cell & Environment* **2021**, *44* (12), 3745–3755. <https://doi.org/10.1111/pce.14190>.
 58. Peiffer, J. A.; Spor, A.; Koren, O.; Jin, Z.; Tringe, S. G.; Dangl, J. L.; Buckler, E. S.; Ley, R. E. Diversity and Heritability of the Maize Rhizosphere Microbiome under Field Conditions. *Proc. Natl. Acad. Sci. U.S.A.* **2013**, *110* (16), 6548–6553. <https://doi.org/10.1073/pnas.1302837110>.
 59. Majdura, J.; Jankiewicz, U.; Gałazka, A.; Orzechowski, S. The Role of Quorum Sensing Molecules in Bacterial–Plant Interactions. *Metabolites* **2023**, *13* (1), 114. <https://doi.org/10.3390/metabo13010114>.

60. Zafeiriou, I.; Ntoanidou, S.; Baira, E.; Kasiotis, K. M.; Barmpouni, T.; Machera, K.; Mylona, P. V. Ingenious Characterization and Assessment of Lentil Germplasm Collection to Aphid *Acyrtosiphon Pisum* Stress Unveils Distinct Responses. *Front. Plant Sci.* **2022**, *13*, 1011026. <https://doi.org/10.3389/fpls.2022.1011026>.
61. Berlanga-Clavero, M. V.; Molina-Santiago, C.; De Vicente, A.; Romero, D. More than Words: The Chemistry behind the Interactions in the Plant Holobiont. *Environmental Microbiology* **2020**, *22* (11), 4532–4544. <https://doi.org/10.1111/1462-2920.15197>.
62. Panth, M.; Hassler, S. C.; Baysal-Gurel, F. Methods for Management of Soilborne Diseases in Crop Production. *Agriculture* **2020**, *10* (1), 16. <https://doi.org/10.3390/agriculture10010016>.
63. Liu, F.; Hewezi, T.; Lebeis, S. L.; Pantalone, V.; Grewal, P. S.; Staton, M. E. Soil Indigenous Microbiome and Plant Genotypes Cooperatively Modify Soybean Rhizosphere Microbiome Assembly. *BMC Microbiol* **2019**, *19* (1), 201. <https://doi.org/10.1186/s12866-019-1572-x>.
64. Barret, M.; Guimbaud, J.; Darrasse, A.; Jacques, M. Plant Microbiota Affects Seed Transmission of Phytopathogenic Microorganisms. *Molecular Plant Pathology* **2016**, *17* (6), 791–795. <https://doi.org/10.1111/mpp.12382>.

Disclaimer/Publisher's Note: The statements, opinions and data contained in all publications are solely those of the individual author(s) and contributor(s) and not of MDPI and/or the editor(s). MDPI and/or the editor(s) disclaim responsibility for any injury to people or property resulting from any ideas, methods, instructions or products referred to in the content.