

Article

On a class of Hermite-Obrechhoff one-step methods with continuous spline extension

Francesca Mazzia ^{1,†,*} and Alessandra Sestini ^{2,†}

¹ Dipartimento di Informatica, Università degli Studi di Bari Aldo Moro, Italy; francesca.mazzia@unuba.it

² Dipartimento di Matematica e Informatica U. Dini, Università di Firenze, Italy; alessandra.sestini@unifi.it

* Correspondence: francesca.mazzia@uniba.it; Tel.: +39-080-5442702

† These authors contributed equally to this work.

Abstract: The class of A-stable symmetric one-step Hermite-Obrechhoff (HO) methods introduced in [1] for dealing with Initial Value Problems is analyzed. Such schemes have the peculiarity of admitting a multiple knot spline extension collocating the differential equation at the mesh points. As a new result, it is shown that these maximal order schemes are conjugate symplectic which is a benefit when the methods have to be applied to Hamiltonian problems. Furthermore a new efficient approach for the computation of the spline extension is introduced, adopting the same strategy developed in [2] for the BS linear multistep methods. The performances of the schemes are tested in particular on some Hamiltonian benchmarks and compared with those of the Gauss Runge-Kutta schemes and Euler-Maclaurin formulas of the same order.

Keywords: Initial Value Problems; One-step Methods; Hermite-Obrechhoff methods; symplecticity; B-Splines; BS Methods.

1. Introduction

We are interested in the numerical solution of the first order Ordinary Differential Equation (ODE),

$$\mathbf{y}'(t) = \mathbf{f}(t, \mathbf{y}(t)) \quad t \in [t_0, t_0 + T], \quad (1)$$

associated with the initial condition

$$\mathbf{y}(t_0) = \mathbf{y}_0, \quad (2)$$

where $\mathbf{f} : [t_0, t_0 + T] \times \mathbb{R}^m \rightarrow \mathbb{R}^m, m \geq 1$, is a $C^{R-1}, R \geq 1$, function on its domain and $\mathbf{y}_0 \in \mathbb{R}^m$ is assigned. In this context, here we focus on one-step Hermite-Obrechhoff (HO) methods [3, pag. 277]. Unlike Runge-Kutta schemes, high order of convergence is obtained with HO methods without adding stages. Clearly there is a price for this because total derivatives of the \mathbf{f} function are involved in the difference equation defining the method and thus a suitable smoothness requirement for \mathbf{f} is necessary. Multiderivative methods have been considered often in the past for the numerical treatment of ordinary differential equations, for example also in the context of boundary value methods [4] and in the last years there is a renewed interest in this topic, also considering its application to the numerical solution of differential algebraic equations, see e.g. [5–10]. Here we consider the numerical solution of Hamiltonian problems which in canonical form can be written as follows

$$\mathbf{y}' = J \nabla H(\mathbf{y}), \quad \mathbf{y}(t_0) = \mathbf{y}_0 \in \mathbb{R}^{2\ell}, \quad (3)$$

with

$$\mathbf{y} = \begin{pmatrix} \mathbf{q} \\ \mathbf{p} \end{pmatrix}, \quad \mathbf{q}, \mathbf{p} \in \mathbb{R}^\ell, \quad J = \begin{pmatrix} O & I_\ell \\ -I_\ell & O \end{pmatrix}, \quad (4)$$

where \mathbf{q} and \mathbf{p} are the generalized coordinates and conjugate momenta, $H : \mathbb{R}^{2\ell} \rightarrow \mathbb{R}$ is the Hamiltonian function and I_ℓ stands for the identity matrix of dimension ℓ . Note that the flow $\varphi_t : \mathbf{y}_0 \rightarrow \mathbf{y}(t)$ associated with the dynamical system (3) is symplectic, this means that its Jacobian satisfies

$$\frac{\partial \varphi_t(\mathbf{y})^\top}{\partial \mathbf{y}} J \frac{\partial \varphi_t(\mathbf{y})}{\partial \mathbf{y}} = J, \quad \forall \mathbf{y} \in \mathbb{R}^{2\ell}. \quad (5)$$

13 Recently the class of Euler-Maclaurin HO methods for the solution of Hamiltonian problems has been
14 analyzed in [11,12] where, despite the non-existence results of symplectic multiderivative methods
15 shown in [13], the conjugate symplecticity of the methods was proved.

16 In this paper we consider the symmetric one-step HO methods which were analyzed in [1,14] in
17 the context of spline applications. We call them BSHO methods, since they are connected to B-Splines,
18 as we will show. BSHO methods have a formulation similar to that of the Euler-Maclaurin formulas
19 and actually the order 2 and 4 schemes of the two families are the same. As a new result, we prove
20 that BSHO methods are conjugate symplectic schemes, as is the case for the Euler-Maclaurin methods
21 [11,12] and so both the families are suited in the context of geometric integration.

22 BSHO methods are also strictly related to BS methods [15,16], which are a class of Linear
23 Multistep Methods (LMMs) also based on B-splines suited for addressing boundary value problems
24 formulated as first order differential problems.¹ Actually, as for the BSHO methods, the discrete
25 solution generated by a BS method can be easily extended to a continuous spline collocating the
26 differential problem at the mesh points [2]. The idea now is to rely on B-splines with multiple
27 inner knots in order to derive one-step HO schemes. Actually the inner knot multiplicity is strictly
28 connected to the number of derivatives of \mathbf{f} involved in the difference equations defining the method
29 and consequently with the order of the method. The efficient approach introduced in [2] dealing
30 with BS methods for the computation of the collocating spline extension is here extended to BSHO
31 methods, working with multiple knots. Note that we adopt a reversed point of view with respect to
32 [1,14] because we assume to have already available the numerical solution generated by the BSHO
33 methods and to be interested in an efficient procedure for obtaining the B-spline coefficients of the
34 associated spline.

35 The paper is organized as follows. In Section 2 one-step symmetric HO methods are introduced,
36 focusing in particular on BSHO methods. Section 3 is devoted to prove that BSHO methods are
37 conjugate symplectic methods. Then Section 4 first shows how these methods can be revisited in
38 the spline collocation context. Successively, it introduces an efficient procedure to compute the
39 B-spline form of the collocating spline extension associated with the numerical solution produced
40 by the R -th BSHO and it shows that its convergence order is equal to that of the numerical solution.
41 Section 6 presents some numerical results related to Hamiltonian problems, comparing them with
42 those generated by Euler-Maclaurin and Gauss Runge-Kutta schemes of the same order.

¹ Note that also BS methods were firstly studied in [1,14] but at that time they were discarded in favor of BSHO methods since, when used as initial value methods, they are not convergent. In [15,16] the same schemes have been studied as boundary value methods and in such context they have been recovered in particular for being applied to boundary value problems.

Table 1. Symmetric one-step BSHO coefficients.

R	$\beta_1^{(R)}$	$\beta_2^{(R)}$	$\beta_3^{(R)}$	$\beta_4^{(R)}$	$\beta_5^{(R)}$	δ_R
1	$\frac{1}{2}$					$\frac{b_2}{2!}$
2	$\frac{1}{2}$	$\frac{1}{12}$				$\frac{b_4}{4!}$
3	$\frac{1}{2}$	$\frac{1}{10}$	$\frac{1}{120}$			$\frac{3}{10} \frac{b_6}{6!}$
4	$\frac{1}{2}$	$\frac{3}{28}$	$\frac{1}{84}$	$\frac{1}{1680}$		$\frac{1}{21} \frac{b_8}{8!}$
5	$\frac{1}{2}$	$\frac{1}{9}$	$\frac{1}{72}$	$\frac{1}{1008}$	$\frac{1}{30240}$	$\frac{1}{210} \frac{b_{10}}{10!}$

2. One step symmetric Hermite-Obrechhoff methods

Let $t_i, i = 0, \dots, N$, be an assigned partition of the integration interval $[t_0, t_0 + T]$ and let us denote by \mathbf{u}_i an approximation of $\mathbf{y}(t_i)$. Any one-step symmetric Hermite-Obrechhoff (HO) methods can be written as follows, clearly setting $\mathbf{u}_0 := \mathbf{y}_0$,

$$\mathbf{u}_{n+1} = \mathbf{u}_n + \sum_{j=1}^R h_n^j \beta_j^{(R)} \left(\mathbf{u}_n^{(j)} - (-1)^j \mathbf{u}_{n+1}^{(j)} \right), \quad n = 0, \dots, N-1, \quad (6)$$

where $h_n := t_{n+1} - t_n$, $\mathbf{u}_r^{(1)} := \mathbf{f}(t_r, \mathbf{u}_r)$, and where $\mathbf{u}_r^{(j)}$ for $j \geq 2$, denotes the total $(j-1)$ -th derivative of \mathbf{f} with respect to t computed at (t_r, \mathbf{u}_r) ,

$$\mathbf{u}_r^{(j)} := \frac{d^{j-1} \mathbf{f}}{dt^{j-1}}(t, \mathbf{y}(t))|_{(t_r, \mathbf{u}_r)}, \quad j = 2, \dots, R.$$

Note that $\mathbf{u}_r^{(j)} \approx \mathbf{y}^{(j)}(t_r)$ and, on the basis of (1), the analytical computation of the j -th derivative $\mathbf{y}^{(j)}$ involves a tensor of order j ; for example, $\mathbf{y}^{(2)}(t) = \frac{d\mathbf{f}}{dt}(t, \mathbf{y}(t)) = \frac{\partial \mathbf{f}}{\partial t}(t, \mathbf{y}(t)) + \frac{\partial \mathbf{f}}{\partial \mathbf{y}}(t, \mathbf{y}(t)) \mathbf{f}(t, \mathbf{y}(t))$ (where $\frac{\partial \mathbf{f}}{\partial \mathbf{y}}$ becomes the Jacobian $m \times m$ matrix of \mathbf{f} with respect to \mathbf{y} when $m > 1$).

For example the one-step Euler-Maclaurin [3] formulas of order $2s$ with $s \in \mathbb{N}, s \geq 1$,

$$\mathbf{u}_{n+1} = \mathbf{u}_n + \frac{h}{2} \left(\mathbf{u}_n^{(1)} + \mathbf{u}_{n+1}^{(1)} \right) + \sum_{i=1}^{s-1} h_n^{2i} \frac{b_{2i}}{(2i)!} \left(\mathbf{u}_n^{(2i)} - \mathbf{u}_{n+1}^{(2i)} \right), \quad n = 0, \dots, N-1, \quad (7)$$

(where the b_k denote the Bernoulli numbers) belong to this class of methods. These methods will be referred to in the following with the label EMHO.

Here we consider another class of symmetric HO methods which can be obtained by defining as follows the polynomial P_{2R} ,

$$P_{2R}(x) := \frac{x^R(x-1)^R}{(2R)!} \quad (8)$$

appearing in Lemma 13.3 of [3] whose statement is reported in Lemma 1,

Lemma 1. Let R be any positive integer and P_{2R} be a polynomial of exact degree $2R$. Then the following one step linear difference equation,

$$\sum_{j=0}^{2R} h_n^j \mathbf{u}_{n+1}^{(j)} P_{2R}^{(2R-j)}(0) = \sum_{j=0}^{2R} h_n^j \mathbf{u}_n^{(j)} P_{2R}^{(2R-j)}(1)$$

defines a multiderivative method of order $2R$.

Referring to the methods obtainable by Lemma 1, if in particular the polynomial P_{2R} is defined as in (8), we obtain the class of methods we are here interested in. They can be written as in (6) with,

$$\beta_j^{(R)} := \frac{1}{j!} \frac{R(R-1)\dots(R-j+1)}{(2R)(2R-1)\dots(2R-j+1)} \quad (9)$$

which are reported in Table 1, for $R = 1, \dots, 5$. In particular for $R = 1$ and $R = 2$ we obtain the Trapezoidal rule and the Euler-Maclaurin method of order 4, respectively.

These methods were originally introduced in the spline collocation context, dealing in particular with splines with multiple knots [1,14], as we will show in Section 4. We call them BSHO methods since we will show that in such context they can be obtained dealing in particular with the standard B-spline basis. The stability function of the R -th one step symmetric BSHO method is the rational function corresponding to the (R, R) -Padé approximation of the exponential function, as the same order Runge-Kutta Gauss method [17] [pag. 72]. It has been proved that methods with this stability function are A-stable [17, pag. 58 theorem 4.12]. For the proof of the statement of the following corollary which will be useful in the sequel we refer to [1],

Corollary 1. *Let us assume that $f \in C^{2R+1}$ in a region $\mathcal{D} \subset \mathbb{R}^{m+1}$ defined as $\mathcal{D} := \{(t, \mathbf{y}) | t_0 \leq t \leq t_0 + T, \mathbf{y}(t) - L_b \leq \mathbf{y} \leq \mathbf{y}(t) + L_b\}$ with $L_b > 0$. Then there exists a positive constant h_0 such that if $h < h_0$ and $\{\mathbf{u}_i\}_{i=0}^N$ denotes the related numerical solution produced by the R -th one step symmetric BSHO method in (6), it is*

$$\|\mathbf{u}_i^{(j)} - \mathbf{y}_i^{(j)}\| = O(h^{2R}), \quad j = 1, \dots, R, \quad i = 0, \dots, N.$$

3. Conjugate Symplecticity of the symmetric one step BSHO methods

Following the lines of the proof given in [12], in this section we prove that one step symmetric BSHO methods are conjugate symplectic schemes. Without loss of generality in this section we suppose that \mathbf{f} does not explicitly depend on t , that is $\mathbf{f} = \mathbf{f}(\mathbf{y}(t))$. The following lemma proved in [18] is the starting point of the proof.

Lemma 2. *Assume that problem (1) admits a quadratic first integral $Q(\mathbf{y}) = \mathbf{y}^\top \mathbf{S} \mathbf{y}$ (with \mathbf{S} a symmetric matrix) and that it is solved by a B-series integrator $\Phi_h(\mathbf{y})$. Then, the following properties are equivalent:*

- (a) $\Phi_h(\mathbf{y})$ has a modified first integral of the form $\tilde{Q}(\mathbf{y}) = Q(\mathbf{y}) + O(h)$;
- (b) $\Phi_h(\mathbf{y})$ is formally conjugate to a symplectic B-series method. ■

Observe that this lemma considers B-series integrators. The concept of B-series is well explained in [19] ch. 5 and is used in [20] to prove the conjugate symplecticity of symmetric linear multistep methods. With similar arguments we prove the following theorem.

Theorem 1. *The map $\mathbf{y}_1 = \Phi_h(\mathbf{u}_0)$ associated with the one-step method (6)-(9) admits a B-series expansion and satisfies property (a) of Lemma 2.*

Proof. By defining the two characteristic polynomial of the trapezoidal rule

$$\rho(z) := z - 1, \quad \sigma(z) := \frac{1}{2}(z + 1)$$

and the shift operator $E(\mathbf{y}_n) := \mathbf{y}_{n+1}$, the R -th method described in (6) reads,

$$\rho(E)\mathbf{u}_n = \sum_{k=1}^{\lceil R/2 \rceil} 2\beta_{2k-1}^{(R)} h^{2k-1} \sigma(E)\mathbf{u}_n^{(2k-1)} - \sum_{k=1}^{\lfloor R/2 \rfloor} \beta_{2k}^{(R)} h^{2k} \rho(E)\mathbf{u}_n^{(2k)}. \quad (10)$$

We now consider a function $\mathbf{v}(t)$, a stepsize h and the shift operator $E_h(\mathbf{v}(t)) := \mathbf{v}(t+h)$ and we look for a continuous function $u(t)$ that formally satisfies (10), that is, using the relation $E_h = \sum_{j=0}^{\infty} \frac{h^j}{j!} D^j$ where D is the derivative operator,

$$\rho(e^{hD})\mathbf{v}(t) = \sum_{k=1}^{\lceil R/2 \rceil} 2\beta_{2k-1}^{(R)} h^{2k-1} \sigma(e^{hD})\mathbf{v}^{(2k-1)}(t) - \sum_{k=1}^{\lfloor R/2 \rfloor} \beta_{2k}^{(R)} h^{2k} \rho(e^{hD})\mathbf{v}^{(2k)}(t).$$

By multiplying both side of the previous equation by $D\rho(e^{hD})^{-1}$ we obtain:

$$D\mathbf{v}(t) = \sum_{k=0}^{\lceil R/2 \rceil - 1} 2\beta_{2k+1}^{(R)} h^{2k+1} D\rho(e^{hD})^{-1} \sigma(e^{hD}) D^{2k} \mathbf{f}(\mathbf{v}(t)) - \sum_{k=1}^{\lfloor R/2 \rfloor} \beta_{2k}^{(R)} h^{2k} D^{2k} \mathbf{f}(\mathbf{v}(t)), \quad (11)$$

that is,

$$D\mathbf{v}(t) = hD\rho(e^{hD})^{-1} \sigma(e^{hD}) \sum_{k=0}^{\lceil R/2 \rceil - 1} 2\beta_{2k+1}^{(R)} h^{2k} D^{2k} \mathbf{f}(\mathbf{v}(t)) - \sum_{k=1}^{\lfloor R/2 \rfloor} \beta_{2k}^{(R)} h^{2k} D^{2k} \mathbf{f}(\mathbf{v}(t)). \quad (12)$$

Now, since Bernoulli numbers define the Taylor expansion of the function $z/(e^z - 1)$ and $b_0 = 1, b_1 = -1/2$ and $b_j = 0$ for the other odd j , we have

$$\frac{z\sigma(e^z)}{\rho(e^z)} = \frac{1}{2} \frac{z(e^z + 1)}{e^z - 1} = \frac{z}{e^z - 1} + \frac{z}{2} = 1 + \sum_{j=1}^{\infty} \frac{b_{2j}}{(2j)!} z^{2j}.$$

Thus we can write that

$$\dot{\mathbf{v}}(t) = \left(\left(1 + \sum_{j=1}^{\infty} \frac{b_{2j}}{(2j)!} h^{2j} D^{2j} \right) \left(\sum_{k=0}^{\lceil R/2 \rceil - 1} 2\beta_{2k+1}^{(R)} h^{2k} D^{2k} \right) - \sum_{k=1}^{\lfloor R/2 \rfloor} \beta_{2k}^{(R)} h^{2k} D^{2k} \right) \mathbf{f}(\mathbf{v}(t)).$$

With some algebra we arrive to the following relation,

$$\dot{\mathbf{v}}(t) = \mathbf{f}(\mathbf{v}(t)) + \sum_{j=R}^{\infty} \delta_j h^{2j} D^{2j} \mathbf{f}(\mathbf{v}(t)), \quad (13)$$

with

$$\delta_j := \sum_{k=0}^{\lceil R/2 \rceil - 1} \frac{b_{2(j-k)}}{(2(j-k))!} 2\beta_{2k+1}^{(R)}, \quad j \geq R.$$

75 Observe that $\delta_j = 0, j = 1, \dots, R-1$ since the method is of order $2R$ (see [19, Theorem 3.1, page 340]).
 76 Therefore, we derive the modified initial value differential equation associated with the numerical
 77 scheme by coupling (13) with the initial condition $\mathbf{v}(t_0) = \mathbf{y}_0$. Thus we can conclude that the one step
 78 symmetric BSHO methods are B-series methods. The proof of (a) follows exactly the same steps of
 79 the analogous proof in Theorem 1 of [12] and in [19, Theorem 4.10, page 591]. \square

80 In the last column of Table 1 we report the coefficients δ_R for $R \leq 5$. We can observe that
 81 the truncation error in the modified initial value problem is smaller than the one of the EMHO
 82 methods of the same order which is equal to $b_i/i!$ (see [12]). The conjugate symplecticity property
 83 of a numerical scheme makes it suitable for the solution of Hamiltonian problems, since a conjugate
 84 symplectic method has the same long-time behaviour of a symplectic one. A well known pair of
 85 conjugate methods is composed by the trapezoidal and midpoint rules. Observe that the trapezoidal
 86 rule belongs to both the classes BSHO and EMHO of multiderivative methods and its characteristic
 87 polynomial plays an important role in the proof of their conjugate symplecticity.

4. The spline extension

In his PhD thesis [1] Loscalzo proves that a polynomial of degree $2R$ interpolating both \mathbf{u}_n and \mathbf{u}_{n+1} together with all the derivatives $\mathbf{u}_n^{(k)}, \mathbf{u}_{n+1}^{(k)}, k = 1, \dots, R$, exists if and only if (6) is fulfilled with the β coefficients defined as in (9). The piecewise polynomial whose restriction to $[t_n, t_{n+1}]$ coincides with this polynomial is clearly a C^R spline of degree $2R$ with breakpoints at the mesh points and it collocates the differential equation at the mesh points with multiplicity R .² Actually this piecewise representation of the spline is that adopted in [1]. Here we are interested in deriving its more compact B-spline representation. Besides being more compact, this allows also us to clarify the connection between BSHO and BS methods previously introduced in [2,15,16].

The mentioned result proved by Loscalzo is equivalent to say that any C^R spline of degree $2R$ with breakpoints at the mesh points fulfills the relation in (6) if (9) holds. On its turn, this is equivalent to say that such a relation holds for any element of the B-spline basis of S_{2R} , the space of C^R $2R$ -degree splines with breakpoints at $t_i, i = 0, \dots, N$, where $t_0 < \dots < t_N = t_0 + T$. Since we relate to the B-spline basis, we need to introduce the associated extended knot vector

$$T := \{\tau_{-2R}, \dots, \tau_{-1}, \tau_0, \dots, \tau_{(N-1)R}, \tau_{(N-1)R+1}, \tau_{(N-1)R+2}, \dots, \tau_{(N+1)R+1}\}, \quad (14)$$

where

$$\begin{aligned} \tau_{-2R} &= \dots = \tau_0 = t_0, \\ \tau_{(n-1)R+1} &= \dots = \tau_{nR} = t_n, & n = 1, \dots, N-1, \\ \tau_{(N-1)R+1} &= \dots = \tau_{(N+1)R+1} = t_N, \end{aligned}$$

which means that all the inner breakpoints have multiplicity R in T and both t_0 and t_N have multiplicity $2R + 1$. The associated B-spline basis is denoted as $B_i, i = -2R, \dots, (N-1)R$ and the dimension of S as D , with $D := (N+1)R + 1$.

Thus, setting $\alpha := (-1, 1)^T \in \mathbb{R}^2$ and $\beta^{(i)} := (\beta_i^{(R)}, -(-1)^i \beta_i^{(R)})^T \in \mathbb{R}^2, i = 1, \dots, R$, considering the local support of the B-spline basis, we have that $(\alpha^T, \beta^{(1)T}, \dots, \beta^{(R)T})^T$ can be also characterized as the unique solution of the following linear system,

$$G^{(n)} (\alpha^T, \beta^{(1)T}, \dots, \beta^{(R)T})^T = \mathbf{e}_{2R+2}, \quad (15)$$

where $\mathbf{e}_{2R+2} = (0, \dots, 0, 1)^T \in \mathbb{R}^{2R+2}$ and

$$G^{(n)} := \begin{bmatrix} A_1^{(n)T} & -h_n A_2^{(n)T} & -h_n^2 A_3^{(n)T} & \dots & -h_n^R A_{R+1}^{(n)T} \\ \mathbf{0}^T & \mathbf{e}^T & \mathbf{0}^T & \dots & \mathbf{0}^T \end{bmatrix}, \quad (16)$$

with $\mathbf{e} := (1, 1)^T$ and $A_1^{(n)}, A_2^{(n)}, \dots, A_{R+1}^{(n)}$ defined as,

$$A_{j+1}^{(n)} := \begin{bmatrix} B_{(n-2)R}^{(j)}(t_n), & \dots, & B_{nR}^{(j)}(t_n) \\ B_{(n-2)R}^{(j)}(t_{n+1}), & \dots, & B_{nR}^{(j)}(t_{n+1}) \end{bmatrix}_{2 \times (2R+1)} \quad (17)$$

where $B_i^{(j)}$ denotes the j -th derivative of B_i . Note that the last equation in (15), $2\beta_1^{(R)} = 1$, is just a normalization condition.

In the following proposition the nonsingularity of the matrix $G^{(n)}$ is proved.

Proposition 1. The $(2R+2) \times (2R+2)$ matrix $G^{(n)}$ defined in (16) and associated with the B-spline basis of S_{2R} is nonsingular.

² This means that also the equations $\mathbf{y}^{(j)} = \mathbf{f}^{(j-1)}, j = 2, \dots, R$ are fulfilled at the mesh points.

Proof. First of all let us observe that the principal submatrix of $G^{(n)}$ of order $2R + 1$ is nonsingular because of the Karlin-Ziegler theorem on osculatory spline interpolation at the breakpoints, see for example [21] or Theorem 6 reported in the Appendix of [16]. Such a theorem requires that all successive derivatives are considered at each breakpoint and that the sum of any breakpoint multiplicity with the maximal order of derivative there considered is less or equal to the spline degree. This is true for our principal submatrix, since the multiplicity is R at both t_n and t_{n+1} and the maximal derivative order is equal to R in t_n and to $R - 1$ in t_{n+1} . So, referring to $G^{(n)T}$, it remains to prove that its last column can't be a linear combination of the other columns. Actually this is not possible because, considering that the restriction to $[t_n, t_{n+1}]$ of any function in S_{2R} is a polynomial of degree $2R$, in the opposite case it would exist a polynomial P of degree $2R$ such that $P(t_n) = P(t_{n+1}) = 0$, $P'(t_n) = P'(t_{n+1}) = -1$, and $P^{(j)}(t_n) = P^{(j)}(t_{n+1}) = 0$, $j = 2, \dots, R$. This is not admissible recalling the result proved by Loscalzo and considering that such a polynomial does not fulfill (8). \square

Note that this different form for defining the coefficient of the R -th BSHO scheme is formally analogous to that adopted in [16] for defining a BS method on a general partition. However in this case the coefficients of the scheme do not depend on the mesh distribution, so there is no need to determine them solving the above linear system. On the other hand, having proved that the matrix $G^{(n)}$ is nonsingular will be useful in the following for determining the B-spline form of the associated spline extension.

Thus, let us now see how the B-spline coefficients of the spline in S_{2R} associated to the numerical solution generated by the R -th BSHO can be efficiently obtained, considering that the following conditions have to be imposed,

$$\begin{cases} \mathbf{s}_{2R}(t_n) = \mathbf{u}_n, \\ \mathbf{s}_{2R}^{(j)}(t_n) = \mathbf{u}_n^{(j)}, j = 1, \dots, R. \end{cases} \quad n = 0, \dots, N. \quad (18)$$

Now we are interested in deriving the B-spline coefficients $\mathbf{c}_i, i = -2R, \dots, (N-1)R$, of \mathbf{s}_{2R} ,

$$\mathbf{s}_{2R}(t) = \sum_{i=-2R}^{(N-1)R} \mathbf{c}_i B_i(t), \quad t \in [t_0, t_0 + T].$$

Relating to such a representation, all the conditions in (18) can be re-written in the following compact matrix form,

$$(A \otimes I_m) \mathbf{c} = (\mathbf{u}_0^T, \dots, \mathbf{u}_N^T, \mathbf{u}_0^{(1)T}, \dots, \mathbf{u}_N^{(1)T}, \dots, \mathbf{u}_0^{(R)T}, \dots, \mathbf{u}_N^{(R)T})^T, \quad (19)$$

where $\mathbf{c} = (\mathbf{c}_{-2R}^T, \dots, \mathbf{c}_{(N-1)R}^T)^T \in \mathbb{R}^{mD}$, with $\mathbf{c}_j \in \mathbb{R}^m$, I_m is the identity matrix of size $m \times m$ and where

$$A := \left(A_1^T, A_2^T, \dots, A_{R+1}^T \right)^T,$$

with each A_ℓ being a $(R+1)$ -banded matrix of size $(N+1) \times D$ with entries defined as follows

$$(A_\ell)_{i,j} := B_j^{(\ell-1)}(t_i). \quad (20)$$

Following the lines of the analogous proof given in [2] dealing with BS methods, we could prove that the rectangular linear system in (19) has always a unique solution, if the entries of the vector on its right hand side satisfy (6) with the β coefficients given in (9). For brevity we do not report here such theorem and move directly to introduce the strategy we adopt for an efficient computation of the B-spline coefficients of \mathbf{s}_{2R} .

Proposition 2. If $\mathbf{y} \in S_{2R}$ and so in particular if \mathbf{y} is a polynomial of degree at most $2R$, then

$$\mathbf{y}_{n+1} - \mathbf{y}_n - \sum_{j=1}^R h_n^j \beta_j^{(R)} \left(\mathbf{y}_n^{(j)} - (-1)^j \mathbf{y}_{n+1}^{(j)} \right) = 0, \quad n = 0, \dots, N-1,$$

131 where $\mathbf{y}_n := \mathbf{y}(t_n)$, $\mathbf{y}_n^{(j)} := \frac{d^j \mathbf{y}}{dt^j}(t_n)$, $j = 1, \dots, R$, $n = 0, \dots, N$, and the spline extension \mathbf{s}_{2R} coincides with
132 \mathbf{y} .

133 **Proof.** The results follows by considering that the local truncation error of the methods is null. \square

134 4.1. Efficient spline computation

Concerning the computation of the spline coefficient vectors

$$\mathbf{c}_i, \quad i = -(2R), \dots, (N-1)R,$$

the unique solution of (19) can be computed with several different strategies which can have very different computational costs and can produce results with different accuracy when implemented in finite arithmetic. Here we follow the local strategy used in [2]. Taking into account the banded structure of A_i , $i = 1, \dots, R+1$ we can verify that (19) implies the following relations,

$$\begin{bmatrix} A_1^{(i)} \\ -h_i A_2^{(i)} \\ \vdots \\ -h_i^R A_{R+1}^{(i)} \end{bmatrix} \otimes I_m \mathbf{c}^{(i)} = \mathbf{w}^{(i)}(\mathbf{u}) \quad (21)$$

where $\mathbf{u} = (\mathbf{u}_0, \dots, \mathbf{u}_N)^T$, $\mathbf{c}^{(i)} := (\mathbf{c}_{(i-3)R}^T, \dots, \mathbf{c}_{(i-1)R}^T)^T \in \mathbb{R}^{m(2R+1)}$, $i = 1, \dots, N$ and

$$\mathbf{w}^{(i)}(\mathbf{u}) := (\mathbf{u}_{i-1}^T, \mathbf{u}_i^T, -h_i \mathbf{u}_{i-1}^{(1)T}, -h_i \mathbf{u}_i^{(1)T}, \dots, -h_i^R \mathbf{u}_{i-1}^{(R)T}, -h_i^R \mathbf{u}_i^{(R)T})^T.$$

As a consequence, we can also write that,

$$(G^{(i)T} \otimes I_m) \hat{\mathbf{c}}^{(i)} = \mathbf{w}^{(i)}(\mathbf{u}) \quad (22)$$

135 where $\hat{\mathbf{c}}^{(i)} := (\mathbf{c}^{(i)T}, \mathbf{0}^T)^T \in \mathbb{R}^{m(2R+2)}$.

Now, for all integers $r < 2R+2$, we can define other $R+1$ auxiliary vectors $\hat{\mathbf{a}}_{i,r}^{(R)}, \hat{\mathbf{b}}_{i,r}^{(R)}$, $i = 1, \dots, R \in \mathbb{R}^2$, defined as the solution of the following linear system,

$$G^{(i)} (\hat{\mathbf{a}}_{i,r}^{(R)T}, \hat{\mathbf{b}}_{1,i,r}^{(R)T}, \dots, \hat{\mathbf{b}}_{R,i,r}^{(R)T})^T = \mathbf{e}_r, \quad (23)$$

where \mathbf{e}_r is the r -th unit vector in \mathbb{R}^{2R+2} (that is the auxiliary vectors are the r -th column of the inverse of $G^{(i)}$). Then, we can write,

$$((\hat{\mathbf{a}}_{i,r}^{(R)T}, \hat{\mathbf{b}}_{1,i,r}^{(R)T}, \dots, \hat{\mathbf{b}}_{R,i,r}^{(R)T}) \otimes I_m) (G^{(i)T} \otimes I_m) \hat{\mathbf{c}}^{(i)} = (\mathbf{e}_r^T \otimes I_m) \hat{\mathbf{c}}^{(i)} = \mathbf{c}_{(i-3)R+r-1}.$$

From this formula, considering (22) we can conclude that

$$\mathbf{c}_{(i-3)R+r-1} = ((\hat{\mathbf{a}}_{i,r}^{(R)T}, \hat{\mathbf{b}}_{1,i,r}^{(R)T}, \dots, \hat{\mathbf{b}}_{R,i,r}^{(R)T}) \otimes I_m) \mathbf{w}^{(i)}(\mathbf{u}) \quad (24)$$

Thus solving all the systems (23) for $i = 1, \dots, N$, $r = r_1(i), \dots, r_2(i)$, with

$$r_1(i) := \begin{cases} 1 & \text{if } i = 1, \\ R + 1 & \text{if } 1 < i \leq N, \end{cases} \quad r_2(i) := \begin{cases} 2R & \text{if } 1 \leq i < N, \\ 2R + 1 & \text{if } i = N, \end{cases}$$

all the spline coefficients are obtained. Note that, with this approach, we solve D auxiliary systems whose size does not depend on N , using only N different coefficient matrices. Furthermore we can also observe that only the information at t_{i-1} and t_i are necessary to compute $\mathbf{c}_{(i-3)R+r-1}$. Thus the spline can be dynamically extended at the same time the numerical solution is computed at a new time value. This is clearly of interest for a dynamical adaptation of the time step.

In the following subsection, relying on its B-spline representation, we prove that the convergence order of s_{2R} to y is equal to that of the numerical solution. This result was already available in [1] (see Thorem 4.2 in such a reference) but proved with different longer arguments.

4.2. Spline convergence

Let us assume the following quasi-uniformity requirement for the mesh,

$$M_l \leq \frac{h_i}{h_{i+1}} \leq M_u, \quad i = 0, \dots, N-1, \quad (25)$$

with M_l and M_u not depending on h . Then we can easily prove the following theorem (where for notational simplicity we restrict to $m = 1$), whose statement is analogous to that on the convergence of the spline extension associated with BS methods [2].

Theorem 3. *Let us assume that the assumptions on f done in Corollary 1 hold and that (25) holds. Then the spline extension s_{2R} approximates the solution y of (1) with an error of order $O(h^{2R})$ where $h := \max_{i=0, \dots, N-1} h_i$.*

Proof. Let \bar{s}_{2R} denote the spline belonging to S_{2R} obtained by quasi-interpolating y with one of the rules introduced in formula (5.1) in reference [22] by point evaluators functionals. From [22][Theorem 5.2], under the quasi-uniformity assumption on the mesh distribution, we can derive that such a spline approximates y with maximal approximation order also with respect to all the derivatives, that is,

$$\|\bar{s}_{2R}^{(j)} - y^{(j)}\|_{\infty} \leq K \|y^{(2R+1)}\|_{\infty} h^{2R+1-j}, \quad j = 0, \dots, R, \quad (26)$$

where K is a constant depending only on R, M_l and M_u .

On the other hand, by using the triangular inequality we can state that

$$\|s_{2R} - y\|_{\infty} \leq \|s_{2R} - \bar{s}_{2R}\|_{\infty} + \|\bar{s}_{2R} - y\|_{\infty}, \quad (27)$$

Thus we need to consider the first term on the right hand side of this inequality. On this concern, because of the partition of unity property of the B-splines, we can write

$$\|s_{2R} - \bar{s}_{2R}\|_{\infty} = \left\| \sum_{i=-2R}^{(N+1)R+1} (c_i - \bar{c}_i) B_i(\cdot) \right\|_{\infty} \leq \|\mathbf{c} - \bar{\mathbf{c}}\|_{\infty},$$

where $\mathbf{c} := (c_{-2R}, \dots, c_{(N+1)R+1})^T$ and $\bar{\mathbf{c}} := (\bar{c}_{-2R}, \dots, \bar{c}_{(N+1)R+1})^T$.

Now, for any function $g \in C^{2R}[t_0, t_0 + T]$, we can define the following linear functionals,

$$\lambda_{i,r}(g) := \mathbf{w}^{(i)T}(g) (\hat{\mathbf{a}}_{i,r}^{(R)T}, \hat{\mathbf{b}}_{1,i,r}^{(R)T}, \dots, \hat{\mathbf{b}}_{R,i,r}^{(R)T})^T,$$

where

$$\mathbf{w}^{(i)}(g) := (g(t_{i-1}), g(t_i), -h_i g'(t_{i-1}), -h_i g'(t_i), \dots, -h_i^R g^{(R)}(t_{i-1}), -h_i^R g^{(R)}(t_i))^T$$

and the vector $(\hat{\mathbf{a}}_{i,r}^{(R)T}, \hat{\mathbf{b}}_{1,i,r}^{(R)T}, \dots, \hat{\mathbf{b}}_{R,i,r}^{(R)T})$ has been defined in the previous section. Considering that \bar{s}_{2R} , as well as any other spline belonging to S_{2R} , can be written as follows,

$$\bar{s}_{2R}(\cdot) = \sum_{i=1}^N \sum_{r=r_1(i)}^{r_2(i)} \lambda_{i,r}(\bar{s}_{2R}) B_{-2R-1+i+r-r_1(i)}(\cdot),$$

from (26) we can deduce that

$$\bar{\mathbf{c}} = \left(\lambda_{1,r_1(1)}(\bar{s}_{2R}), \dots, \lambda_{N,r_2(N)}(\bar{s}_{2R}) \right)^T = \left(\lambda_{1,r_1(1)}(y), \dots, \lambda_{N,r_2(N)}(y) \right)^T + O(h^{2R+1}).$$

Now the vector $(\hat{\mathbf{a}}_{i,r}^{(R)T}, \hat{\mathbf{b}}_{1,i,r}^{(R)T}, \dots, \hat{\mathbf{b}}_{R,i,r}^{(R)T})^T$ is defined in (23) as the r -th column of the inverse of the matrix $G^{(i)}$. On the other hand, the entries of such nonsingular matrix do not depend on h but, because of the locality of the B-spline basis and of the R -th multiplicity of the inner knots, only on the ratios h_j/h_{j+1} , $j = i-1, i$ which are uniformly bounded from below and from above because of (25). Thus we can conclude that there exists a constant C depending on M_l, M_u and R such that $\|G^{(i)}\|^{-1} \leq C$, which implies that the same is true for any one of the mentioned coefficient vectors. This implies that for all indices it is

$$|c_i - \bar{c}_i| \leq K \|\mathbf{w}^{(i)}(u) - \mathbf{w}^{(i)}(y)\| + O(h^{2R+1}).$$

On the other hand, taking into account the result reported in Corollary 1 besides (26), we can easily derive that $\|\mathbf{w}^{(i)}(u) - \mathbf{w}^{(i)}(y)\| = O(h^{2R})$ which then implies that $\|\mathbf{c} - \bar{\mathbf{c}}\|_\infty = O(h^{2R})$. \square

5. Approximation of the derivatives

The computation of the derivative is quite expensive and thus usually methods not requiring derivative values are preferred. So, as well as for any other multiderivative method, it is of interest to associate with BSHO methods an efficient way to compute the derivative values at the mesh points. We are exploiting a lot of possibilities like:

- to use a generic symbolic tools, if the function \mathbf{f} is know in closed form;
- to use a tool of automatic differentiation, like ADiGator, a MATLAB Automatic Differentiation Tool [23];
- to use the *Infinity Computer Arithmetic*, if the function \mathbf{f} is know as a black box [8,9];
- to approximate it with, for example, finite differences.

In this section we just show the relation of these methods with a class of Boundary Value Methods (BVMs), the Extended Trapezoidal Rules (ETRs), linear multistep methods used with boundary conditions [24]. Similar relations have been found in [25] with HO and the equivalent class of super-implicit methods. The ETRs can be derived from BSHO when the derivative are approximated by finite differences. Let us consider the order 4 method with $R = 2$. In this case the first derivative of \mathbf{f} could be approximated using central differences

$$\mathbf{f}'_i \approx \frac{\mathbf{f}_{i+1} - \mathbf{f}_{i-1}}{2h_i}$$

the numerical scheme (6), denoting $\mathbf{u}_i^{(1)} =: \mathbf{f}_i$ and $\mathbf{u}_i^{(2)} =: \mathbf{f}'_i$, is

$$\mathbf{u}_{i+1} = \mathbf{u}_i + \frac{h}{2} (\mathbf{f}_{i+1} + \mathbf{f}_i) - \frac{h^2}{12} (\mathbf{f}'_{i+1} - \mathbf{f}'_i),$$

after the approximation becomes

$$\mathbf{u}_{i+1} = \mathbf{u}_i + \frac{h}{2} (\mathbf{f}_{i+1} + \mathbf{f}_i) - \frac{h}{24} (\mathbf{f}_{i+2} - \mathbf{f}_i - \mathbf{f}_{i+1} + \mathbf{f}_{i-1}),$$

rearranging we recover the ETR of order 4:

$$\mathbf{u}_{i+1} = \mathbf{u}_i + \frac{h}{24} (-\mathbf{f}_{i+2} + 13\mathbf{f}_{i+1} + 13\mathbf{f}_i - \mathbf{f}_{i-1}).$$

170 With similar arguments for the method of order 6, $R = 3$, by approximating the derivatives with the
171 order 4 finite differences:

$$\mathbf{f}'_i \approx \frac{1}{h} \left(\frac{1}{12} \mathbf{f}_{i+3} + \frac{2}{3} \mathbf{f}_{i+2} - \frac{2}{3} \mathbf{f}_i + \frac{1}{12} \mathbf{f}_{i-1} \right),$$

and

$$\mathbf{u}_i^{(3)} =: \mathbf{f}''_i \approx \frac{1}{h^2} \left(-\frac{1}{12} \mathbf{f}_{i+2} + \frac{4}{3} \mathbf{f}_{i+1} - \frac{5}{2} \mathbf{f}_i + \frac{4}{3} \mathbf{f}_{i-1} - \frac{1}{12} \mathbf{f}_{i-2} \right),$$

and rearranging we obtain the sixth order ETR method:

$$\mathbf{u}_{i+1} = \mathbf{u}_i + \frac{h}{1440} (11\mathbf{f}_{i+3} - 93\mathbf{f}_{i+2} + 802\mathbf{f}_{i+1} + 802\mathbf{f}_i - 93\mathbf{f}_{i-1} + 11\mathbf{f}_{i-2}).$$

172 This relation allows us to derive a continuous extension of the ETR schemes using the
173 continuous extension of the BSHO method, just substituting the derivatives by the corresponding
174 approximations. Naturally a change of the stepsize will now change the coefficients of the linear
175 multistep schemes. Observe that BVMs have been efficiently used for the solution of boundary value
176 problems in [26] and the BS-method are also in this class [15].

177 It has been proved in [20] that symmetric linear multistep methods are symplectic conjugate
178 schemes. Naturally in the context of linear multistep methods used with only initial conditions
179 this properties refers only to the trapezoidal method, but when we solve Boundary Value Problems
180 the correct use of a linear multistep formula is with boundary conditions, and this makes the
181 corresponding formulas stable, with region of stability equal to C^- (see [24]). The conjugate
182 symplecticity of the methods is the motivation of their good behavior shown in [27] and in [28] when
183 used in block form and with a sufficiently large block for the solution of conservative problems.

184 6. Numerical examples

185 The numerical examples reported here have two main purposes, the first one is to show the good
186 behavior of BSHO methods for Hamiltonian problems, showing both the linear growth of the error
187 for long time computation and the conservation of the Hamiltonian. To this end we compare the
188 methods with the symplectic Gauss Runge-Kutta methods and with the conjugate symplectic EMHO
189 methods. On the other side we are interested in showing the convergence properties of the spline
190 continuous extensions. Observe that the availability of a continuous extension of the same order of
191 the method is an important property. In fact for high order methods, especially for superconvergent
192 methods like the Gauss ones, it is very difficult to find a good continuous extension. The natural
193 continuous extension of these methods, actually, do not keep the same order of accuracy, without
194 adding extra stages [29]. Observe also that a good continuous extension is an important tool, for
195 example for the event location.

196 We report results of our experiments for BSHO methods of order 6 and 8. We recall that the
197 order 2 BSHO method corresponds to the well known trapezoidal rule, whose property of conjugate
198 symplecticity is well known (see for example [19]) and whose continuous extension by the B-spline
199 has been already developed in [2]. The order 4 BSHO belongs also to the EMHO class and it has been
200 analyzed in details in [12].

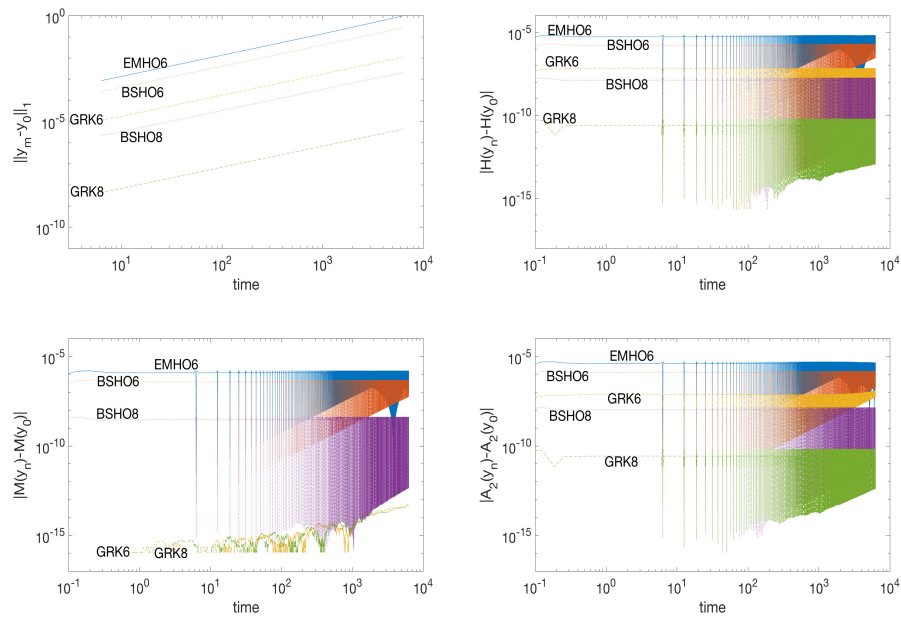


Figure 1. Kepler problem: results for the sixth and eighth order BSHO methods (dotted lines), sixth order Euler-MacLauren method (solid line) and sixth and eighth order Gauss methods (dashed lines).

Table 2. Kepler problem: Maximum absolute error of the numerical solution and its derivative computed for 10 periods

order	N	err y	rate	err y'	rate
4	100	$2.69 \cdot 10^{-1}$		$1.33 \cdot 10^0$	
4	200	$1.69 \cdot 10^{-2}$	3.99	$8.50 \cdot 10^{-2}$	3.96
4	400	$1.06 \cdot 10^{-3}$	4.00	$5.30 \cdot 10^{-3}$	4.00
4	800	$6.60 \cdot 10^{-5}$	4.00	$3.31 \cdot 10^{-4}$	4.00
6	100	$1.95 \cdot 10^{-3}$		$9.74 \cdot 10^{-3}$	
6	200	$2.96 \cdot 10^{-5}$	6.03	$1.48 \cdot 10^{-4}$	6.03
6	400	$4.60 \cdot 10^{-7}$	6.00	$2.30 \cdot 10^{-6}$	6.00
6	800	$7.19 \cdot 10^{-9}$	6.00	$3.60 \cdot 10^{-8}$	6.00
8	100	$1.56 \cdot 10^{-5}$		$7.82 \cdot 10^{-5}$	
8	200	$5.75 \cdot 10^{-8}$	8.08	$2.88 \cdot 10^{-7}$	8.08
8	400	$2.17 \cdot 10^{-10}$	8.05	$1.08 \cdot 10^{-9}$	8.05
8	800	$7.62 \cdot 10^{-12}$	4.87	$3.70 \cdot 10^{-11}$	4.44

6.1. Kepler problem

The first example is the classical Kepler problem, that describes the motion of two bodies subject to Newton's law of gravitation. This problem is a completely integrable Hamiltonian nonlinear dynamical system with two degrees of freedom (see, for details [30]). The Hamiltonian function

$$H(q_1, q_2, p_1, p_2) = \frac{1}{2}(p_1^2 + p_2^2) - \frac{1}{\sqrt{q_1^2 + q_2^2}},$$

describes the motion of the body that is not located in the origin of the coordinate systems. This motion is an ellipse in the q_1 - q_2 plane whose eccentricity e is set using as starting values

$$q_1(0) = 1 - e, \quad q_2(0) = 0, \quad p_1(0) = 0, \quad p_2(0) = \sqrt{\frac{1+e}{1-e}},$$

and with period $\mu := 2\pi$. First integrals of this problems are: the total energy H , the angular momentum

$$M(q_1, q_2, p_1, p_2) := q_1 p_2 - q_2 p_1.$$

and the Lenz vector $\mathbf{A} := (A_1, A_2, A_3)^\top$, whose components are

$$A_1(q, p) := p_2 M(q, p) - \frac{q_1}{\|q\|_2}, \quad A_2(q, p) := -p_1 M(q, p) - \frac{q_2}{\|q\|_2}, \quad A_3(q, p) := 0.$$

Only three of the four first integrals are independent so, for example, A_1 can be neglected.

As in [12] we set $e = 0.6$ and $h = \mu/200$, and we integrate the problem over 10^3 periods. Setting $\mathbf{y} := (q_1, q_2, p_1, p_2)$, the error $\|\mathbf{y}_m - \mathbf{y}_0\|_1$ in the solution is computed at specific times fixed equal to multiple of the period, that is at $t_m = 2\pi m$, with $m = 1, 2, \dots$; the errors in the invariants have been computed by using also another point inside each period. Figure 1 reports the obtained results for the sixth and eighth order BSHO (dotted line, BSHO6, BSHO8), the sixth order EMHO (solid lines, EMHO6) and the sixth and eighth order Gauss Runge-Kutta (GRK) (dashed lines, GRK6, GRK8) methods. On the top-left picture the absolute error of the numerical solution; the top-right picture shows the error in the Hamiltonian function; the error in the angular momentum is drawn in the bottom-left picture while the bottom-right picture concerns the error in the second component of the Lenz vector. As expected from a symplectic or a conjugate symplectic integrator, we can see a linear drift in the error $\|\mathbf{y}_m - \mathbf{y}_0\|_1$ as the time increases. As well as the other considered methods, we can see that BSHO methods guarantee a near conservation of the Hamiltonian function and angular momentum. This latter quadratic invariant is precisely conserved (up to machine precision) by GRK methods due to their symplecticity property. We observe also that, as expected, the error for the BSHO6 method is $\frac{3}{10}$ of the error of the EMHO6 method.

To check the convergence behavior of the continuous extensions, we integrated the problem over 10 periods starting with stepsize $h = \mu/N$, $N = 100$. We computed a reference solution using the order 8 method with an halved step-size and we compute the maximum absolute error on the doubled grid. The results are reported in Table 2 for the solution and the first derivative and clearly show that the continuous extension respects the theoretical order of convergence.

6.2. Non linear pendulum problem

As a second example, we consider the dynamics of a pendulum under influence of gravity. This dynamics is usually described in terms of the angle q that the pendulum forms with its stable rest position:

$$\ddot{q} + \sin q = 0, \tag{28}$$

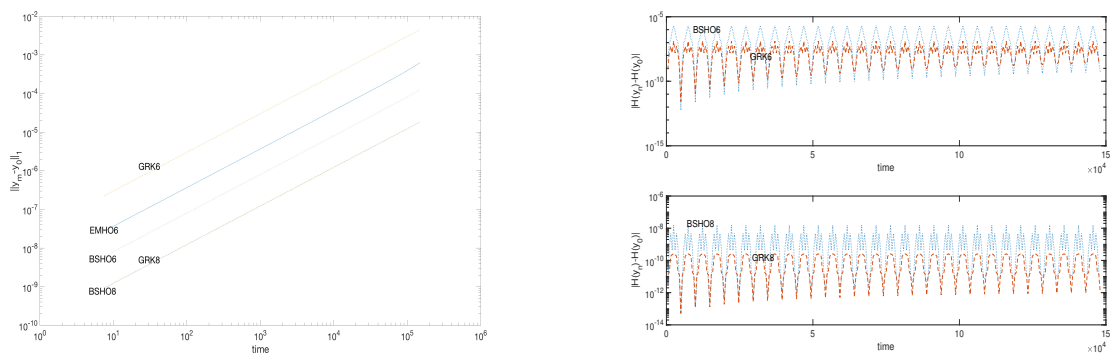


Figure 2. Nonlinear pendulum problem: results for the Hermite Obrechhoff method of order six and eight (dotted lines), for the sixth order Euler-Maclaurin (solid line) and Gauss method (dashed lines) applied to the pendulum problem. The upper-right and bottom-right plots report the error in the Hamiltonian function for the six order and eight order integrators respectively.

Table 3. Nonlinear Pendulum problem: Maximum absolute error of the numerical solution and its derivative computed for 10 periods

order	N	err y	rate	err y'	rate
4	10	$1.26 \cdot 10^{-2}$		$1.28 \cdot 10^{-2}$	
4	20	$9.02 \cdot 10^{-4}$	3.81	$1.10 \cdot 10^{-3}$	3.53
4	40	$5.73 \cdot 10^{-5}$	3.97	$6.60 \cdot 10^{-5}$	4.06
4	80	$3.58 \cdot 10^{-6}$	4.00	$4.52 \cdot 10^{-6}$	3.86
6	10	$2.65 \cdot 10^{-4}$		$2.82 \cdot 10^{-4}$	
6	20	$1.36 \cdot 10^{-6}$	7.59	$5.77 \cdot 10^{-6}$	5.61
6	40	$2.07 \cdot 10^{-8}$	6.04	$1.15 \cdot 10^{-8}$	5.65
6	80	$3.21 \cdot 10^{-10}$	6.01	$1.81 \cdot 10^{-9}$	5.98
8	10	$2.56 \cdot 10^{-5}$		$2.61 \cdot 10^{-5}$	
8	20	$1.53 \cdot 10^{-8}$	10.7	$8.50 \cdot 10^{-8}$	8.26
8	40	$6.14 \cdot 10^{-11}$	7.96	$4.02 \cdot 10^{-10}$	7.72
8	80	$3.01 \cdot 10^{-13}$	7.67	$1.56 \cdot 10^{-12}$	8.01

where $p = \dot{q}$ is the angular velocity. The Hamiltonian function associated with (28) is

$$H(q, p) = \frac{1}{2}p^2 - \cos q. \quad (29)$$

An initial condition (q_0, p_0) such that $|H(q_0, p_0)| < 1$ gives rise to a periodic solution $y(t) = (q(t), p(t))^T$ corresponding to oscillations of the pendulum around the straight-down stationary position. In particular, starting at $y_0 = (q_0, 0)^T$, the period of oscillation may be expressed in terms of the complete elliptical integral of the first kind as

$$\mu(q_0) = \int_0^1 \frac{dz}{\sqrt{(1-z^2)(1-\sin^2(q_0/2)z^2)}}.$$

For the experiments we choose $q_0 = \pi/2$, thus the period μ is equal to 7.416298709205487. We use the sixth and eighth order BSHO and GRK methods and the sixth order EMHO method with stepsize $h = \mu/20$ to integrate the problem over $2 \cdot 10^4$ periods. Setting $y = (q, p)$, again the errors $\|y_m - y_0\|$ in the solution are evaluated at times multiple of the period μ , that is for $t_m = \mu m$, with $m = 1, 2, \dots$; the energy error $H(y_n) - H(y_0)$ has been computed at the mesh points $t_n = 11hn$, $n = 1, 2, \dots$. Figure 2 reports the obtained results. On the left plot, we can see that, for all the considered methods, the error in the solution grows linearly as time increases. A near conservation of the energy function is observable in both the pictures on the right. The amplitude of the bounded oscillations are similar for both methods, confirming the good long-time behavior properties of BSHO methods for the problem at hand. To check the convergence behavior of the continuous extensions, we integrated the problem over 10 periods starting with stepsize $h = \mu/N$, $N = 10$. We computed a reference solution using the order 8 method with an halved step-size and we compute the maximum absolute error on the doubled grid. The results are reported in Table 3 for the solution and the first derivative and clearly show, also for this example, that the continuous extension respects the theoretical order of convergence.

Acknowledgments: Supported by GNCS-INDAM projects. We thanks Prof. Felice Iavernaro for helpful discussions related to this research.

Author Contributions: Conceptualization, Francesca Mazzia and Alessandra Sestini; Formal analysis, Francesca Mazzia and Alessandra Sestini; Investigation, Francesca Mazzia and Alessandra Sestini; Methodology, Francesca Mazzia and Alessandra Sestini; Writing – original draft, Francesca Mazzia and Alessandra Sestini; Writing – review & editing, Francesca Mazzia and Alessandra Sestini.

Bibliography

1. Loscalzo, F. *On the use of spline functions for the numerical solution of ordinary differential equations*; PhD thesis, University of Wisconsin, 1968.
2. Mazzia, F.; Sestini, A.; Trigiante, D. The continuous extension of the B-spline linear multistep methods for BVPs on non-uniform meshes. *Applied Numerical Mathematics* **2009**, *59*, 723–738.
3. Hairer, E.; Norsett, S.; Wanner, G. *Solving Ordinary Differential Equations I. Nonstiff Problems. Second Edition.*; Springer-Verlag Berlin, 1993.
4. Ghelardoni, P.; Marzulli, P. Stability of some boundary value methods for IVPs. *Applied Numerical Mathematics* **1995**, *18*, 141–153.
5. Estévez Schwarz, D.; Lamour, R. A new approach for computing consistent initial values and Taylor coefficients for DAEs using projector-based constrained optimization. *Numerical Algorithms* **2017**, pp. 1–23. Article in Press.
6. Baeza, A.; Boscarino, S.; Mulet, P.; Russo, G.; Zorio, D. Approximate Taylor methods for ODEs. *Computers and Fluids* **2017**, *159*, 156–166.
7. Skvortsov, L. A fifth order implicit method for the numerical solution of differential-algebraic equations. *Computational Mathematics and Mathematical Physics* **2015**, *55*, 962–968.

- 260 8. Amodio, P.; Iavernaro, F.; Mazzia, F.; Mukhametzhanov, M.; Sergeyev, Y. A generalized Taylor method
261 of order three for the solution of initial value problems in standard and infinity floating-point arithmetic.
262 *Mathematics and Computers in Simulation* **2017**, *141*, 24–39.
- 263 9. Sergeyev, Y.; Mukhametzhanov, M.; Mazzia, F.; Iavernaro, F.; Amodio, P. Numerical methods for solving
264 initial value problems on the infinity computer. *International Journal of Unconventional Computing* **2016**,
265 *12*, 3–23.
- 266 10. Butcher, J.; Sehnalová, P. Predictor-corrector Obreshkov pairs. *Computing* **2013**, *95*, 355–371.
- 267 11. Iavernaro, F.; Mazzia, F. Symplecticity properties of Euler–Maclaurin methods. 2018. in press.
- 268 12. Iavernaro, F.; Mazzia, F.; Mukhametzhanov, M.; Sergeyev, Y. Conjugate Symplecticity of Euler–Maclaurin
269 methods and their implementation on the Infinity Computer. submitted.
- 270 13. Hairer, E.; Murua, A.; Sanz-Serna, J. The non-existence of symplectic multi-derivative Runge-Kutta
271 methods. *BIT* **1994**, *34*, 80–87.
- 272 14. Loscalzo, F. An introduction to the application of spline functions to initial value problems. In *Theory and*
273 *Applications of Spline Functions*; Academic Press, New York, 1969; pp. 37–64.
- 274 15. Mazzia, F.; Sestini, A.; Trigiante, D. B-spline linear multistep methods and their continuous extensions.
275 *SIAM Journal on Numerical Analysis* **2006**, *44*, 1954–1973.
- 276 16. Mazzia, F.; Sestini, A.; Trigiante, D. BS linear multistep methods on non-uniform meshes. *Journal of*
277 *Numerical Analysis, Industrial and Applied Mathematics* **2006**, *1*, 131–144.
- 278 17. Hairer, E.; Wanner, G. *Solving Ordinary Differential Equations II. Stiff and Differential Algebraic Problems.*
279 *Second Edition.*; Springer-Verlag Berlin, 1996.
- 280 18. Chartier, P.; Faou, E.; Murua, A. An algebraic approach to invariant preserving integrators: The case of
281 quadratic and hamiltonian invariants. *Numerische Mathematik* **2006**, *103*, 575–590.
- 282 19. Hairer, E.; Lubich, C.; Wanner, G. *Geometric Numerical Integration. Structure-Preserving Algorithms for*
283 *Ordinary Differential Equations. Second Edition.*; Springer, Berlin, 2006.
- 284 20. Hairer, E. Conjugate-symplecticity of linear multistep methods. *Journal of Computational Mathematics* **2008**,
285 *26*, 657–659.
- 286 21. de Boor, C. *A Practical Guide to Splines. Second Edition.*; Springer-Verlag, New York, 2001.
- 287 22. Lyche, T.; Shumaker, L.L. Local Spline Approximation Methods. *Journal of Approximation Theory* **1975**,
288 *15*, 294–325.
- 289 23. Weinstein, M.J.; Rao, A.V. Algorithm 984: ADiGator, a Toolbox for the Algorithmic Differentiation of
290 Mathematical Functions in MATLAB Using Source Transformation via Operator Overloading. *ACM*
291 *Trans. Math. Softw.* **2017**, *44*, 21:1–21:25.
- 292 24. Brugnano, L.; Trigiante, D. *Solving Differential Problems by Multistep Initial and Boundary Value Methods*;
293 CRC Press, Boca Raton, FL, 2016.
- 294 25. Neta, B.; Fukushima, T. Obrechhoff versus super-implicit methods for the solution of first- and
295 second-order initial value problems. *Computers and Mathematics with Applications* **2003**, *45*, 383–390.
- 296 26. Mazzia, F.; Trigiante, D. A hybrid mesh selection strategy based on conditioning for boundary value ODE
297 problems. *Numerical Algorithms* **2004**, *36*, 169–187.
- 298 27. Iavernaro, F.; Mazzia, F.; Trigiante, D. Multistep methods for conservative problems. *Mediterranean*
299 *Journal of Mathematics* **2005**, *2*, 53–69.
- 300 28. Mazzia, F.; Pavani, R. Symmetric block BVMs for the solution of conservative systems. AIP Conference
301 Proceedings, 2013, Vol. 1558, pp. 738–741.
- 302 29. Shampine, L.F.; Jay, L.O., Dense Output. In *Encyclopedia of Applied and Computational Mathematics*; Springer
303 Berlin Heidelberg: Berlin, Heidelberg, 2015; pp. 339–345.
- 304 30. Brugnano, L.; Iavernaro, F. *Line Integral Methods for Conservative Problems*; Monographs and Research
305 Notes in Mathematics, Gordon and Breach Science Publishers, Amsterdam, 1998.