

---

# Oral Antiviral Defense: Saliva- and Beverage-Like Hypotonicity Dynamically Regulate Formation of Membraneless Biomolecular Condensates of Antiviral Human MxA in Oral Epithelial Cells

---

[Pravin. B Sehgal](#)<sup>\*</sup>, Huijuan Yuan, Anthony Centone, Susan V DiSenso-Browne

Posted Date: 12 March 2024

doi: 10.20944/preprints202403.0727.v1

Keywords: oral/gingival epithelium; environmental hypotonic stress; interferon- $\lambda$ ; human myxovirus resistance protein (MxA); biomolecular condensates; membraneless organelles (MLOs); osmoregulation; macromolecular uncrowding and recrowding; regulated volume decrease (RVD)



Preprints.org is a free multidiscipline platform providing preprint service that is dedicated to making early versions of research outputs permanently available and citable. Preprints posted at Preprints.org appear in Web of Science, Crossref, Google Scholar, Scilit, Europe PMC.

Copyright: This is an open access article distributed under the Creative Commons Attribution License which permits unrestricted use, distribution, and reproduction in any medium, provided the original work is properly cited.

Article

# Oral Antiviral Defense: Saliva- and Beverage-Like Hypotonicity Dynamically Regulate Formation of Membraneless Biomolecular Condensates of Antiviral Human MxA in Oral Epithelial Cells

Pravin B. Sehgal <sup>1,2,\*</sup>, Huijuan Yuan <sup>1</sup>, Anthony Centone <sup>3</sup> and Susan V. DiSenso-Browne <sup>4</sup>

<sup>1</sup> Department of Cell Biology and Anatomy, New York Medical College, Valhalla, New York, USA

<sup>2</sup> Department of Medicine, New York Medical College, Valhalla, USA; huy20@pitt.edu

<sup>3</sup> Department of Pathology, Microbiology and Immunology, New York Medical College, Valhalla, New York, USA; acentone@student.touro.edu

<sup>4</sup> Touro College of Dental Medicine at New York Medical College, Hawthorne, New York USA; susan\_disenso@touro.edu

\* Correspondence: pravin\_sehgal@nymc.edu

**Abstract:** The oral mucosa represents a defense between the external environment and the rest of the body, and encompasses several antimicrobial and antiviral mechanisms. Oral mucosal cells are constantly bathed in hypotonic saliva (normally one-third tonicity compared to plasma) and are repeatedly exposed to environmental stresses of tonicity, temperature and pH by the drinks we imbibe (e.g. hypotonic: water, tea, coffee; hypertonic: assorted fruit juices, red wines), as well as of diverse microbial and viral flora. In the mouth, the broad-spectrum antiviral mediator MxA (a dynamin-family large GTPase) is constitutively expressed in healthy periodontal tissues, and also induced by Type III interferons (e.g. IFN- $\lambda$ 1). Endogenously induced human MxA and exogenously expressed human GFP-MxA formed membraneless biomolecular condensates in the cytoplasm of oral carcinoma cells (OECM1 cell line). These condensates likely represent storage granules in equilibrium with antivirally active dispersed MxA. Remarkably, cytoplasmic MxA condensates were exquisitely sensitive sensors of hypotonicity – the condensates in oral epithelium disassembled within 1-2 min of exposure of cells to saliva-like one-third hypotonicity, and spontaneously reassembled in the next 4-7 min. OECM1 cells preloaded with calcein-AM (a reporter of cytosolic “macromolecular crowding”) confirmed unquenching and then re-quenching of calcein fluorescence during this process. Hypertonicity had little effect on MxA condensates. The spontaneous reassembly of GFP-MxA condensates in oral epithelial cells even under continuous saliva-like hypotonicity was slowed by the protein phosphatase inhibitor cyclosporin A (CsA) and by the K-channel blocker tetraethylammonium chloride (TEA) suggestive of the involvement of the volume-sensitive WNK kinase-protein phosphatase (PTP)-K-Cl cotransporter (KCC) pathway in the regulated volume decrease (RVD) during condensate reassembly in oral cells. Thus, physiologically, hypotonic drinks (water, tea, coffee) trigger a rapid deployment of antiviral MxA throughout the cytoplasm of oral epithelial cells, with subsequent salvage of MxA back into storage granules/condensates.

**Keywords:** oral/gingival epithelium; environmental hypotonic stress; interferon- $\lambda$ ; human myxovirus resistance protein (MxA); biomolecular condensates; membraneless organelles (MLOs); osmoregulation; macromolecular uncrowding and recrowding; regulated volume decrease (RVD)

## 1. Introduction

The oral mucosa represents a defensive boundary between the external environment and the rest of the body, and encompasses several antimicrobial and antiviral mechanisms [1–12]. Oral mucosal cells are constantly bathed in hypotonic saliva (normally one-third tonicity compared to plasma; isotonicity is approximately 300-330 mOsm), and are also repeatedly exposed to environmental stresses of tonicity, temperature and pH by the drinks we imbibe (e.g. hypotonic:

water, tea, coffee; hypertonic: assorted fruit juices, red wines), as well as of diverse microbial and viral flora [8–12]. In the mouth, the broad-spectrum human antiviral mediator MxA (“myxovirus resistance factor A”) is constitutively expressed in healthy gingival epithelium, and is also induced by Type III interferons (IFNs) such as IFN- $\lambda$ 1. MxA structures are also observed in the cytoplasm of oral epithelial cells in inflammatory lesions [13,14]). MxA is a 60-kDa dynamin-family large GTPase induced in many cell types by exposure to Type I (IFNs- $\alpha$  and  $\beta$ ) or III (IFN- $\lambda$ ) interferons but not Type II interferon (IFN- $\gamma$ ) [15–20]. Remarkably, only IFN- $\lambda$  (a Type III IFN) but not IFN- $\alpha$  (a Type I IFN) induce MxA in oral epithelial cells (see below). To clarify the nomenclature, by convention the human gene is called *Mx1*, the human protein is called MxA; however, some investigators also refer to the protein as Mx1 [17–20].

Human MxA is exclusively cytoplasmic and inhibits the replication of a broad range of RNA- and DNA-containing viruses including influenza, vesicular stomatitis virus (VSV), SARS-CoV2, herpes, papilloma, and adenoviruses, [15–20]. The molecular mechanisms by which human MxA inhibits cytoplasmically replicating RNA viruses such as VSV is primarily by inhibition of early viral transcription (within 45 min of start of infection) [21–23]; soluble (dispersed) MxA inhibits VSV-virion driven transcription in cell-free assays [22]. The GTPase activity is necessary for most but not all of the antiviral activities of MxA; moreover, dimerization of cytosolic MxA is critical for antiviral activity [17–25].

Four years ago we recognized that the granular cytoplasmic structures formed by endogenous human MxA and exogenously expressed human GFP-MxA in the cytoplasm of human liver and lung cancer cells (Huh7 and A549 respectively) represented novel liquid-liquid phase-separated (LLPS) membraneless biomolecular condensates [24–29]. These “membraneless organelles” (MLOs) were devoid of an enveloping membrane as evaluated by correlated light and electron microscopy (CLEM), had a gel-like internal milieu as judged by fluorescence recovery after photobleaching (FRAP), and disassembled rapidly (in 1-2 min) when cells were exposed to 1,6-hexanediol (5% Hex) - a hydrophobic reagent which disrupts phase-separated condensates [24–29]. Importantly, MxA condensates required an intact cellular plasma membrane to maintain their integrity in the cytoplasm [24]. Indeed, cytoplasmic MxA condensates in liver and lung cancer cells turned out to be sensitive sensors of hypotonicity – the condensates disassembled within 1-2 min of exposure of cells to hypotonicity (range 40-100 mOsm), and reassembled in 1-2 min but into new condensate structures when cells were returned to isotonic medium (300-330 mOsm) [24,25,29]. Remarkably, there was spontaneous reassembly of MxA condensates in 5-7 min in A549 lung cancer cells even when kept continuously at one-fourth or one-third tonicity medium (range: 80-100 mOsm) [29]. Since saliva corresponds to approximately one-third isotonicity (approx. 100-110 mOsm), and we regularly imbibe hypotonic drinks such as water, tea and coffee (range 5-40 mOsm) [9–11], our observations about the dynamic nature of MxA condensates raised the possibility that MxA structures, and thus its antiviral biology, in oral/gingival cells might be sensitive to hypotonicity-driven environmental stresses that we inflict repetitively on our oral mucosa every single day.

In the present study, we explored the dynamic cell biology of the newly-discovered membraneless MxA condensates in the cytoplasm of human oral epithelial cells. We investigated the physiological regulation of MxA condensate dispersal and reassembly by saliva- and beverage-like hypotonicity in oral carcinoma cells in culture. We tested the hypothesis that “macromolecular uncrowding, and then recrowding” of cytosolic content due to cell volume increase, and then regulated volume decrease (RVD) determined the equilibrium between dispersed MxA and MxA in condensates in oral cells. Biochemically, the data implicate the well-known WNK kinase-protein phosphatase (PTP)-K-Cl cotransporter (KCC) pathway [30–33] as a mechanism underlying RVD in oral epithelial cells. Taken together, physiologically, hypotonic drinks (water, tea, coffee) would trigger a rapid deployment of antiviral MxA throughout the cytoplasm of oral epithelial cells, with subsequent spontaneous salvage of MxA back into storage granules/condensates for further cycles of antiviral defense.

## 2. Materials and Methods

### 2.1. Cells and Cell Culture

Human oral carcinoma cell line OECM1 was purchased from Millipore-Sigma (St. Louis, MO). Human lung adenocarcinoma cell line A549 was obtained from the ATCC (Manassus, VA). Additional aliquots of the A549 cells and its derivative line A549-hACE2 were obtained from BEI Resources/ATCC (Manassus, VA). The respective cell lines were grown in DMEM (Corning Cat. No. 10-013-CV, with glutamine, Na-pyruvate and high glucose) supplemented with 10% v/v fetal bovine serum (FBS; Gibco, Grand Island, NY) in T25 flasks [24,27,29]. For experiments, the cells were typically plated in 35 mm dishes without or with cover-slip bottoms [24,27,29]. Recombinant human IFN- $\alpha$ 2 was purchased from BioVision (Milpitas, CA) and recombinant human IFN- $\lambda$ 1 (also called IL-29) from R & D Systems (Minneapolis, MN). Cells in 35 mm cultures were typically treated with these IFNs were typically used at 50 ng/ml for 2 days. Whole-cell extracts and Western blot analyses for MxA were carried out as previously reported [24,27,29].

### 2.2. Plasmids and Transient Transfection

The GFP (1-248)-tagged full-length human MxA was a gift from Dr. Jovan Pavlovic (University of Zurich, Switzerland) [23]. Transient transfections were carried out using just subconfluent cultures in 35 mm plates using DNA in the range of 0.3-2  $\mu$ g/culture and the Polyfect reagent (Qiagen, Germantown, MD) and the manufacturer's protocol (with 10  $\mu$ l Polyfect reagent per 35 mm plate) [24].

### 2.3. Live-Cell Fluorescence Imaging

Live-cell imaging of GFP-MxA structures in transiently transfected cells was carried out in cells grown in 35 mm plates using the upright the Zeiss AxioImager 2 equipped with a warm (37°C) stage and a 40x water immersion objective, and also by placing a coverslip on the sheet of live cells and imaging using the 100x oil objective (as above) with data capture in a time-lapse or z-stack mode (using Axiovision 4.8.1 software) [24,27,29].

### 2.4. Phase Transition Experiments

Live GFP-MxA expressing cells in 35 mm plates were imaged using a 40x water-immersion objective 2-3 days after transient transfection in growth medium or serum-free DMEM medium or in phosphate-buffered saline (PBS) using methods outlined earlier [24,27,29]. Briefly, after collecting baseline images of MxA condensates, the cultures were exposed to 1,6-hexanediol (5% w/v) in PBS, or to hypotonic or hypertonic buffer of indicated strength (ELB; 10 mM NaCl, 10 mM Tris, pH 7.4, 3 mM MgCl<sub>2</sub> or culture medium diluted 1:3 or 1:4 with sterile water; or culture medium adjusted to 3x tonicity with D-sorbitol) and live-cell imaging continued [29]. After the appropriate indicated times (range 5-30 min) the cultures were switched to isotonic phosphate-buffered saline (PBS) or full culture medium and imaged for another 10-15 min. Evaluation of the effects of particular inhibitors on MxA condensate disassembly and reassembly was carried out by first exposing cultures to the relevant inhibitor for 20 min in isotonic medium (full culture medium or PBS) and then shifting to the hypotonic condition in the continued presence of the inhibitor at the original concentration.

### 2.5. Immunofluorescence Imaging

Typically, the cultures were fixed using cold paraformaldehyde (4%; PFA) for 1 hr and then permeabilized using a buffer containing digitonin or saponin (50  $\mu$ g/ml) and sucrose (0.3M) [24,27,29]. Single-label and double-label immunofluorescence assays were carried out using antibodies as indicated, with the double-label assays performed sequentially. Fluorescence was imaged as previously reported [24,27,29] using an erect Zeiss AxioImager M2 motorized microscopy system with Zeiss W N-Achroplan 40X/NA0.75 water immersion or Zeiss EC Plan-Neofluor 100X/NA1.3 oil objectives equipped with an high-resolution RGB HRc AxioCam camera and AxioVision 4.8.1 software in a 1388 x 1040 pixel high speed color capture mode.

## 2.6. Quantitation of Relative Amounts of GFP-MxA in Condensates vs Dispersed State in a Cell

The procedure used to quantitate the relative amounts of MxA in the condensed vs dispersed state on a per cell basis as explained in Figure 2 in [25] and in Figure 7 in [29]. Briefly, images with mixed condensate and dispersed MxA were subjected to Fourier filter processing to subtract objects of small radii (2-4 pixels) in Image J. The pixel radius (in the range 2-4 pixels) used for the subtraction was optimized to subtract all condensates from the image. MxA intensity in the residual subtracted image corresponded to the dispersed protein; subtracting this from the total intensity per cell gave the % of MxA in condensates on a per cell basis [25,29].

## 2.7. VSV Stock and Virus Infection

A stock of the wild-type Orsay strain of VSV (titer:  $9 \times 10^8$  pfu/ml) was a gift of Dr. Douglas S. Lyles (Dept. of Biochemistry, Wake Forest School of Medicine, Winston-Salem, NC). Single-cycle virus infection studies at high multiplicity (moi >10 pfu/ml) were carried out essentially as described by Carey et al [34] as summarized in Davis et al [24] and in Sehgal et al [27,29]. Briefly, cultures (approx.  $2 \times 10^5$  cells per 35 mm plate), previously transfected with the pGFP-MxA expression vector (2 days earlier), were replenished with 0.25 ml serum-free Eagle's medium and 10-20  $\mu$ l of the concentrated VSV stock added (corresponding to MOI >10 pfu/cell). The plates were rocked every 15 min for 45 or 60 as indicated in respective experiments followed by addition of 0.75 ml of full culture medium. For the experiments shown in Figure 2, the cultures were fixed either at 5-6 hrs or 20-24 hrs after the start of the infection using 4% PFA in isotonic PBS (1 hr at 4°C), and immunostained for VSV nucleocapsid (N) protein using an mAb provided by Dr. Douglas S. Lyles (mAb 10G4). N-protein immunofluorescence (in red) in GFP-positive (green) and negative cells, with DAPI in blue using multicolor fluorescence imaging [24,27,29].

## 2.8. Antibody Reagents and Chemicals

Rabbit pAb to human MxA (H-285) (ab-95926) was purchased from Abcam Inc. (Cambridge, MA); Mouse mAb to the VSV nucleocapsid (N) designated 10G4 was a gift from Dr. Douglas S. Lyles (Wake Forest School of Medicine, NC). Rabbit mAb to glyceraldehyde-3-phosphate dehydrogenase (GAPDH; 14C10; number 2118) was obtained from Cell Signaling (Danvers, MA). Respective AlexaFluor 488- and AlexaFluor 594-tagged secondary donkey antibodies to rabbit (A-11008 and A-11012) or mouse (A-21202 and A-21203) IgG were from Invitrogen Molecular Probes (Eugene, OR).

Cyclosporin A (CsA) was purchased from APEX-BIO (Houston, TX), calcien-AM, calyculin-A, okadaic acid and tetraethylammonium chloride (TEA) were purchased from Millipore-Sigma (St. Louis, MO).

## 2.9. Statistical Testing

This was carried out using non-parametric one-way ANOVA (Kruskal-Wallis) with Dunn's post-hoc test for multiple comparisons. The software used was GraphPad Prism 10.

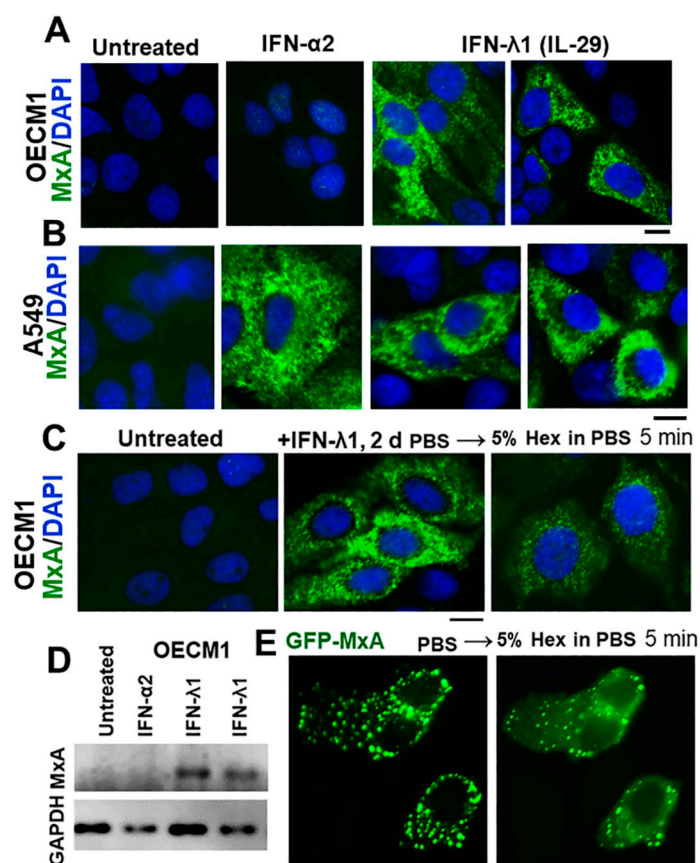
## 3. Results

### 3.1. IFN- $\lambda$ 1 (IL-29), but not IFN- $\alpha$ 2, Induces Expression of MxA to Form Endogenous Cytoplasmic Condensates in Oral Epithelial Cells (OECM1 Cell Line)

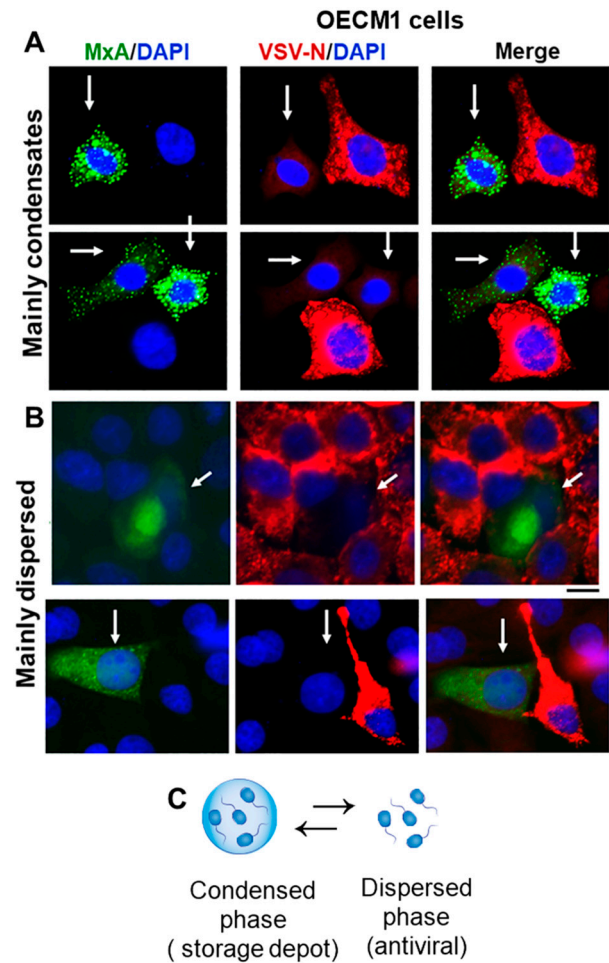
It has been previously demonstrated that MxA expression is markedly enhanced when various human cell types are exposed to Type I IFNs (i.e. IFN- $\alpha$  species or IFN- $\beta$ ) or Type III IFNs (i.e. IFN- $\lambda$  species) but not by Type II IFN (i.e. IFN- $\gamma$ ) [15–20]. Thus, typically, IFN- $\alpha$ 2 and IFN- $\lambda$ 1 both lead to MxA enhancement in human cells (see Figure 1B for A549 lung adenocarcinoma cells). However, with the growing realization that IFN- $\lambda$  is the major IFN at play at the boundary between the external environment and the body, IFN- $\lambda$  species have been implicated in enhancing expression of MxA in gingival cells [1,13]. Thus, in order to set the baseline, we compared MxA expression in OECM1 oral carcinoma cells (OECM1) with that in A549 lung adenocarcinoma cells in the same experiment using

aliquots from the same stock of IFN- $\alpha$ 2 and IFN- $\lambda$ 1 stocks. The immunofluorescence imaging data in Figure 1A compared to that in Figure 1B show that while both IFNs enhanced expression of MxA in A549 cells (as expected), only IFN- $\lambda$ 1 induced MxA in OECM1 oral cells. Evaluation of MxA protein expression in OECM1 cell extracts by Western blot assay confirmed >10-fold stimulation of expression by IFN- $\lambda$ 1 with little if any increase in response to IFN- $\alpha$ 2 in these cells (Figure 1D).

In both A549 and OECM1 cells the IFN-induced endogenous MxA was present in cytoplasmic granular structures (Figure 1A and 1B). We have previously shown that these cytoplasmic MxA structures in A549 cells represent membraneless biomolecular condensates [29] which disassemble rapidly when cells are exposed to 1,6-hexanediol (Hex), a reagent which disrupts weak hydrophobic interactions and is often used to test whether structures in cells are liquid-liquid phase separated (LLPS) condensates [25,26]. Figure 1C shows data that IFN- $\lambda$ 1-induced MxA cytoplasmic granules in OECM1 cells were significantly disassembled in cells exposed to 5% Hex for 5 min, providing evidence for their condensate nature. Moreover, OECM1 cells transiently transfected with an expression vector for human GFP-MxA showed the cytoplasmic accumulation of spheroidal structures which were also disassembled significantly within 5 min when cells were exposed to 5% Hex (Figure 1E). This observation, together with the hypotonicity-induced disassembly of GFP-MxA structures (see below), provided evidence that these structures in OECM1 cells were biomolecular condensates with pools of cytoplasmic GFP-MxA in dynamic equilibrium between the condensate and dispersed phases [25,29].

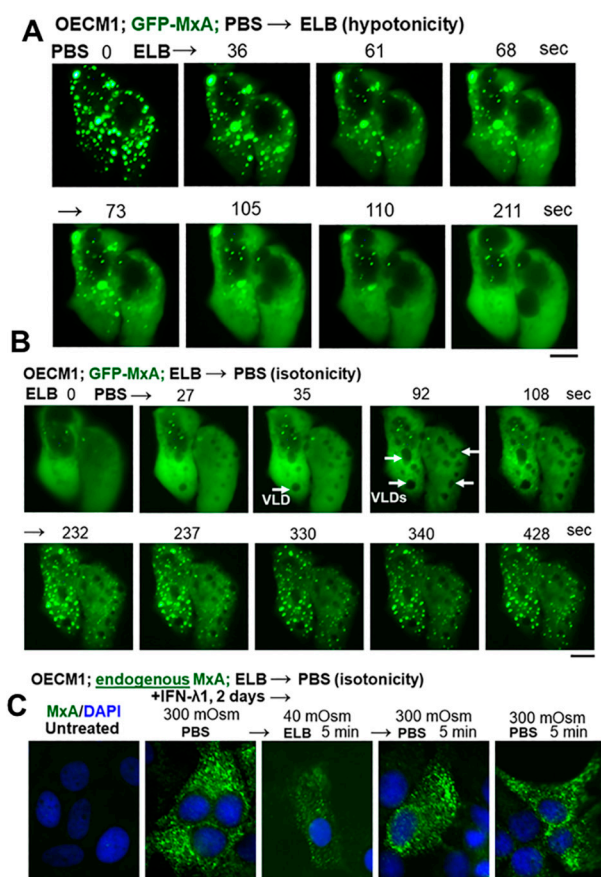


**Figure 1.** IFN- $\lambda$ 1 (IL-29), but not IFN- $\alpha$ 2, induces expression of MxA in oral epithelial cells (OECM1 cell line). Panels A and B: 35 mm cultures of OECM1 and A549 cells were left untreated or treated with human IFN- $\alpha$ 2 or human IFN- $\lambda$ 1 (50 ng/ml for 2 days) followed by fixation (4% PFA for 1 hr at 4°C) and immunofluorescence imaging for MxA; Panel C, OECM1 cultures treated with IFN- $\lambda$ 1 for 2 days were exposed to 5% 1,6-hexanediol in PBS, or left untreated, and then fixed and imaged for MxA; Panel D, Western blot of extracts (30  $\mu$ g/lane) prepared from parallel plates as in Panel A; Panel E, OECM1 cultures were transfected with pGFP-MxA expression vector and imaged in PBS 2 days later, followed by treatment with 5%-Hex and imaging of the same cells 5 min later. All scale bars = 10  $\mu$ m.



**Figure 2.** Single-cell antiviral phenotype (protected against VSV; white arrows) of OECM1 cells expressing GFP-MxA mainly in condensates (Panel A) or mainly in the dispersed phase (Panel B). Cultures in 35 mm plates were transiently transfected with pGFP-MxA vector, and two days later were challenged with VSV (moi >10 pfu/cell) and fixed 24 hr after the start of infection [34]. VSV replication was assessed by immunostaining for the VSV nucleocapsid (N) protein (in red) [24,27,29]. White arrows point to GFP-containing cells with reduced VSV-N. Scale bars = 20  $\mu$ m. Panel C, schematic highlighting the dynamic equilibrium between GFP-MxA in condensed vs dispersed phase (note from Figure 4B, and additional figures below that even in cells with visually “mainly” condensed GFP-MxA, there is 15-25% of GFP-MxA in the dispersed phase which can be still antivirally active as in Panel B above).

Oral epithelial cells expressing GFP-MxA either mainly in condensate form or mainly in dispersed phase both showed an antiviral phenotype against VSV (Figure 2A and 2B). Since even cells with predominantly condensed GFP-MxA contain at least 5-25% of their GFP-MxA in the dispersed phase (see quantitation of various examples below), the data suggest that the condensed phase is likely a storage depot (Figure 3C) from which some or even all of the MxA can be dynamically shifted to the dispersed phase for its antiviral activity. The following sections deal with one aspect of this dynamic bulk shifting process triggered by hypotonicity, and physiologically regulated by parts of the volume sensitive WNK kinase-protein phosphatase-K-Cl cotransporter pathway [30–33].

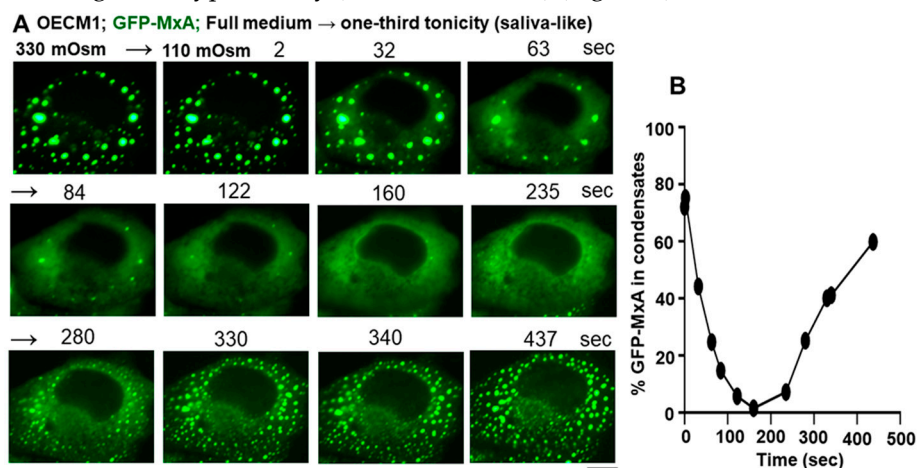


**Figure 3.** Reversible osmosensing by GFP-MxA condensates in oral epithelial cells - focus on beverage-like hypotonicity. Panel A, Sequential live-cell imaging of the same OECM1 cells expressing GFP-MxA condensates 2 days after transient transfection first in isotonic PBS (300 mOsm) and then after shifting to hypotonic ELB (40 mOsm). Panel B, the same cells as in Panel A were sequentially imaged after further shifting back to isotonic PBS (300 mOsm). White arrows, formation of vacuole-like dilations [29] prior to condensate formation. Panel C, IFN-λ1 (50 ng/ml for 2 days) treated OECM1 cultures were fixed after washing with PBS, or after 5 min in ELB, or after 5 min in ELB and then return back to PBS for 5 min. Cultures were fixed using 4% PFA and immunostained for MxA. All scale bars = 10 μm.

### 3.2. Hypotonicity Sensing by GFP-MxA and Endogenous MxA Condensates

With the realization that saliva is typically hypotonic (one-third isotonicity) and that we repetitively subject the oral mucosa to low and high tonicity stresses in the drinks we imbibe [10], we investigated the stability of MxA condensates in the oral epithelium to tonicity stresses. With water, tea and coffee collectively in the range of 5-50 mOsm, we tested whether exposing OECM1 cells expressing GFP-MxA condensates and held under isotonic conditions showed any change when cells were shifted to erythrocyte lysis buffer (ELB; approx. 40 mOsm). The data in Figure 3A show that when shifted to ELB-hypotonicity, the GFP-MxA in oral cells rapidly disassembled within 1-2 min. The data in Figure 3B show that cells with GFP-MxA in the dispersed phase rapidly reassembled into new condensates within 1-2 min of exposure of cells to isotonic PBS. These cells showed the formation of vacuole-like dilations (white arrows in Figure 3B) just prior to condensate formation. As we and others have previously pointed out [29 and citations therein], VLDs represent the internalization of “excess” plasma membrane into large cytoplasmic vesicles as swollen cells shrink back to a normal volume. Importantly, even IFN-λ1-induced *endogenous* MxA condensates showed disassembly in hypotonic ELB, and then reassembly upon shift back to isotonic PBS (Figure 3C). Overall, the data in Figure 3 recapitulate the dynamical behavior of GFP-MxA condensates previously observed in liver and lung adenocarcinoma cells [24,29].

Many investigators have reported that hypertonicity can also drive proteins into cytoplasmic condensates [33]. In the case of GFP-MxA condensates in oral cells shifting cells to 3x isotonicity (achieved using D-sorbitol) to match that of assorted fruit juices or red wines [10], did not affect condensates preexisting in OECM1 cells (Figure S1). Thus, GFP-MxA condensates were exquisitely sensitive to beverage-like hypotonicity (water, tea, coffee) (Figure 3).



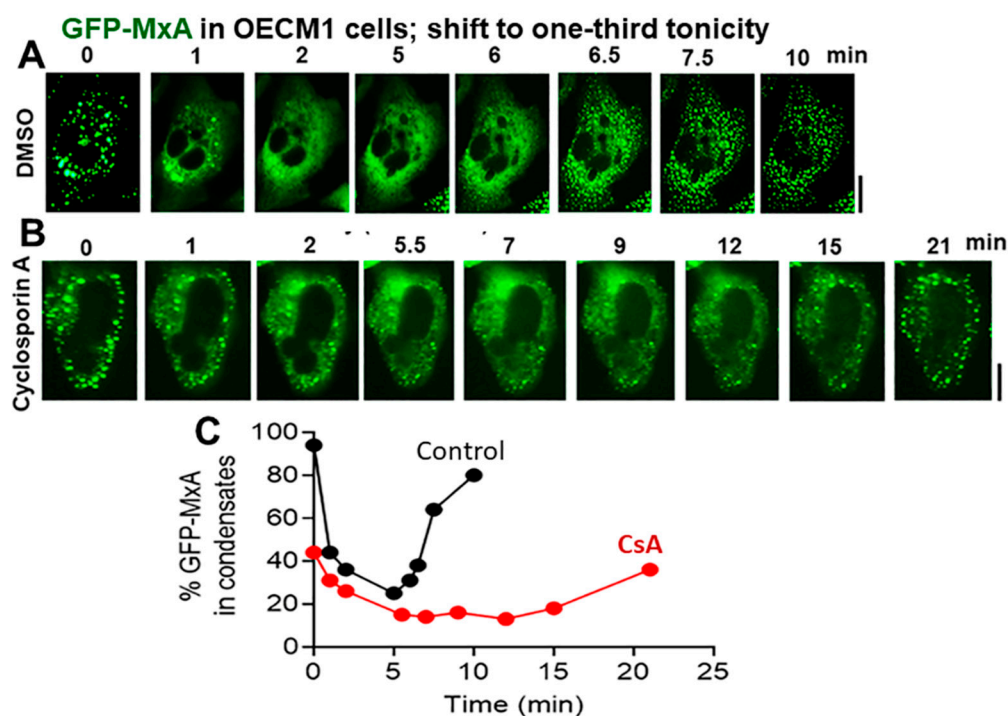
**Figure 4.** Spontaneously reversible osmosensing by GFP-MxA condensates in oral epithelial cells - focus on saliva-like hypotonicity. Panel A, Sequential live-cell imaging of the same OECM1 cell expressing GFP-MxA condensates 2 days after transient transfection first in full culture medium (330 mOsm) and then after shifting to hypotonic of one-third tonicity (110 mOsm; full medium diluted 1:2 with water) for the next 8-10 min. Scale bar = 10  $\mu$ m. Panel B, Quantitation of GFP-MxA in condensates on a % per cell basis in the images shown in Panel A. This quantitation was carried out using the small object subtract Filter in Image J [25,29].

In as much as saliva is approximately one-third isotonic (range 80-110 mOsm) [8–12], we investigated the effect of saliva-like tonicity on GFP-MxA condensates (Figure 4). OECM1 cells exhibiting GFP-MxA condensates in isotonic culture medium were shifted to one-third tonicity medium (full medium diluted 1:2 using water), and the same cell imaged for the next 10-15 min (and kept continuously in hypotonic medium). Figure 4A shows a typical cell evidencing condensate disassembly within 1-2 min of hypotonic shift. Remarkably, the condensates reappeared 5-6 min later even in cultures maintained under saliva-like hypotonic conditions. The new condensates were different from the original ones (Figure 4A). Quantitation of % GFP-MxA in condensates was carried out using Image J and a Fourier filter algorithm that subtracts objects of small radius [ ]. This quantitation, shown in Figure 4B revealed a rapid dynamical disassembly of condensates in 1-2 min followed by a “spontaneous” reassembly in the next 5-8 min. Following this reassembly, GFP-MxA condensates could be rapidly (within 1-2 min) dispersed again by shifting the culture to ELB-level hypotonicity (40 mOsm)(to match a shift from saliva to tea or coffee tonicity) and then reassembled rapidly again by shifting to PBS-level isotonicity (such as Gatorade)(data not shown). While there was cell to cell variation within a single culture in the speed of disassembly and subsequent reassembly observed even within the same cluster of cells, the data for “untreated controls” shown below in subsection 3.4 illustrate the replicability of these observations – a rapid disassembly within 1-2 min followed by “spontaneous” reassembly by 4-8 min thereafter. The biophysical and biochemical mechanisms underlying this reversible process was then investigated.



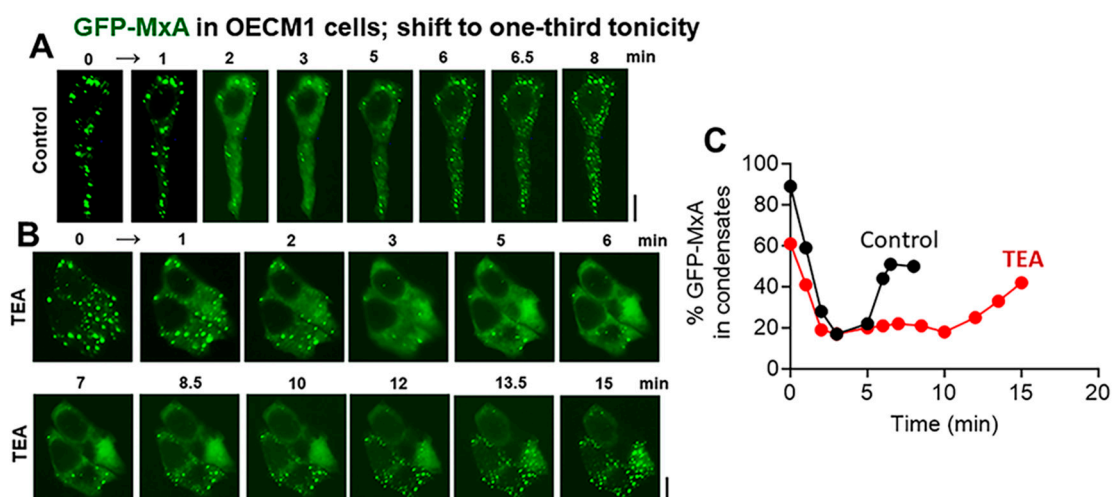
### 3.4. Biochemical Mechanisms: Volume Sensitive WNK Kinase-Protein Phosphatase-K-Cl-Cotransporter Pathway

The biochemical bases for cell volume regulation includes a pathway involving volume-change triggered activation of the WNK kinases (of which there are four: WNK1-4), which in turn activate a reverse recovery process involving activation of protein phosphatases (of which there are three major ones: PTP1, PTP2A, PTP2B), which in turn dephosphorylate the KCC K-Cl cotransporters (of which there are four: KCC1-4) to enhance exit of K and Cl (and water) to reduce cell volume [30–33,35,36](see Discussion below). In reverse, hypertonicity which decreases cell volume, drives WNK1 into cytoplasmic condensates and through the WNK1-Spak/OSR1 pathway phosphorylates KCC1 to decrease KCC1 co-transporter channel activity leading to cell volume increase [33].



**Figure 6.** Testing a biochemical basis for hypotonicity sensing by GFP-MxA condensates in oral epithelial cells. Panels A and B, OECM1 cells were either exposed to CsA (25  $\mu$ M) or DMSO alone for 20 min in full culture medium, and then shifted to one-third tonicity medium in the continued presence of CsA. Live-cell imaging was carried out as indicated. Scale bar = 10  $\mu$ m. Panel C, Quantitation of % GFP-MxA per cell in condensates (in the same cells shown in Panels A and B).

In order to test the possible involvement of this pathway in the physiological regulation of GFP-MxA condensate disassembly and reassembly, we investigated the effect of three different inhibitors protein phosphatases (calyculin A, cyclosporin A (CsA), and okadaic acid) on GFP-MxA condensate disassembly and reassembly in oral cells under saliva-like (one-third tonicity) conditions [36,37]. Additionally, we investigated the effect an “unselective” K channel inhibitor (tetraethylammonium chloride, TEA) on this process [38]. In these experiments, OECM1 cells were first treated with the respective inhibitors in full culture medium, and then shifted to one-third tonicity medium still containing the respective inhibitors. Live-cell imaging of the same cell(s) was carried out for 15-30 min as indicated.

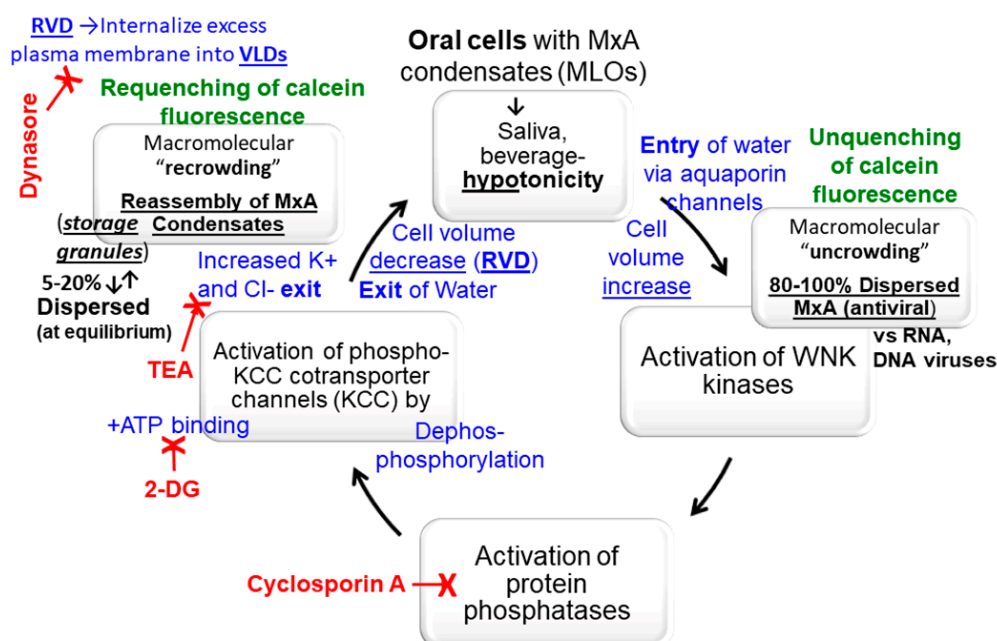


**Figure 7.** Testing a biochemical basis for hypotonicity sensing by GFP-MxA condensates in oral epithelial cells. Panels A and B, OECM1 cells were either kept in full culture medium or exposed to TEA (20 mM) in full culture medium for 20 min. Cultures were then shifted to one-third tonicity medium in the continued presence of TEA. Live-cell imaging was carried out as indicated. Scale bar = 10  $\mu$ m. Panel C, Quantitation of % GFP-MxA per cell in condensates (in the same cells shown in Panels A and B).

The data in Figure 6 show that cyclosporin A (25  $\mu$ M; which preferentially inhibits PTP2B) [37] did not affect GFP-MxA condensate disassembly upon shift-down to one-third tonicity, but considerably slowed down condensate reassembly in oral cells. In similar experiments, the phosphatase inhibitors calyculin A (50-60 nM) and okadaic acid (1  $\mu$ M) (which target PTP1, and PTP2A respectively [37]) had little effect on condensate disassembly and reassembly in oral cells (data not shown). The data in Figure 7 and Figure S2 show that the K channel inhibitor TEA (20 mM) also slowed down GFP-MxA condensate reassembly in oral cells and in A549 cells. Taken together, the data in Figures 6, 7 and S2 suggest the involvement of the WNK-PTP-KCC pathway in regulating GFP-MxA condensate dynamics in oral cells subjected to hypotonic stress.

#### 4. Discussion

There are two aspects of novelty in the present studies. The first has to do with oral biology and oral antiviral defense mechanisms. We specifically focus on the structure and function of antiviral MxA which is present in normal periodontal tissue. Our MxA studies provide demonstration in oral epithelial cells of the new cell biology centered on the newly recognized mechanisms of liquid-liquid phase-separation (LLPS) which generate membraneless organelles (MLOs) in the intracellular space. The present studies highlight the regulation of MxA condensates in oral cells subjected to hypotonicity (Figure 8) as part of the repetitive environmental stress that we repetitively inflict on the oral mucosa when we imbibe drinks of varying tonicity (water, tea, coffee, assorted fruit juices, beers, red wines, etc). We connect the underlying mechanisms of regulate macromolecular uncrowding and recrowding likely through the WINK-PPTP-KCC pathway (Figure 8) to antiviral defense at the level of the oral cavity. Specifically, the new data highlight the role of Type III interferons such as IFN- $\lambda$ 1 and MxA as an antiviral defense mechanism at the boundary between the external millieu and the oral mucosa.



**Figure 8.** Hypothesis: overview of the biophysical and biochemical mechanisms possibly involved in the cell-volume driven dynamic regulation of the formation, disassembly and reassembly of MxA condensates in oral epithelial cells subjected to saliva- and beverage-like hypotonicity. 2-DG, 2-deoxyglucose; KCC, potassium-chloride cotransporter channels 1-4; MLO, membraneless organelle, TEA, tetraethylammonium chloride; RVD, regulated volume decrease; VLD, vacuole-like dilatations; WNK kinase, “With no lysine” kinase family members 1-4.

The second aspect of novelty has to do with advancing the basic science related to the cell biology and biochemistry of MxA. Briefly, our ongoing work corrects a major long-standing error in the IFN and MxA field. Since 2002, it had been widely thought that human (Hu) MxA is associated with the membrane of the smooth endoplasmic reticulum (ER) [39,40]. There is widespread adherence to this inference in the IFN and Mx fields (so quoted in hundreds of papers) [18,19]. A key basis for this are data such as in Figure 5d from Stertz et al [39] showing the distribution of HA-MxA following transient expression in Huh7 cells in a reticular meshwork in the cytoplasm. However, Stertz et al [66], and earlier Accola et al [40], admitted that none of the customary markers for the ER matched MxA structures. Yet for two decades the MxA field unquestioningly accepted that the meshwork shown in 2006 in data from Stertz et al was the ER [39,40]. The breakthrough correction came when we discovered that Huh7 cells (and other hepatoma lines Hep3B, HepG2) contained a novel meshwork of intermediate filaments based on giantin [24,25]. HA-MxA and GFP-MxA condensates associated with this intermediate filament meshwork – this meshwork had misidentified by Stertz et al as the ER [39]. Our studies move the field of MxA research to the realm of LLPS-driven biomolecular condensates [24–29].

Indeed, it is now increasingly recognized that LLPS leads to the formation of biomolecular condensates in the cytoplasm and nucleus of eukaryotic cells [25,26,41–45]. These droplets form “MLOs” and provide novel scaffolds for diverse cellular functions (e.g. cell signaling, nuclear transcription, RNA splicing and processing, mRNA storage and translation, DNA sensing, synaptic function, and mitosis) distinct from membrane-enclosed organelles [25,26,41–45]. It is also now recognized that the replication of many viruses in mammalian cells involves LLPS condensates [e.g. in the life cycles of VSV, rabies (Negri bodies), influenza A, Ebola, measles, Epstein-Barr, Ad5 and SARS-CoV-2 viruses] [44–58].

Human MxA is a cytoplasmic 60-kDa sized dynamin-family GTPase which, in the soluble dispersed phase, associates into dimers. While the structure of MxA includes an intrinsically disordered region (IDR) called loop L4 [17–19,59,60], it is not clear yet whether this contributes to condensate formation. While the GTPase activity is necessary for most of the antiviral activity of

MxA, this is not an absolute requirement. MxA mutated to be GTPase-null retains antiviral activity towards hepatitis B virus [17–19,23]. Also, mutants of MxA which lack GTPase activity and also lack anti-viral activity continue to form cytoplasmic condensates (and sometimes even bigger condensates compared to wild-type (wt) MxA) [17–19,27]. Thus we surmise from this, and data such as in Figure 2 showing cells with predominantly dispersed MxA to retain antiviral activity, that the condensates likely represent a storage granule/depot from which MxA can be rapidly dispersed to effect its antiviral activity (such as inhibition of early transcription of VSV) [21,22].

The cognate related human protein MxB is also cytoplasmic and shows antiviral activity against HIV and herpes virus type 1 [17–20,23,27]. MxB, and GFP-MxB, also forms membraneless condensates on the cytosolic side of nuclear pores and thus inhibits transit of viral RNA into the nucleus [27, 61 and citations therein]. The major murine ortholog of both human *MxA* and human *MxB* genes is the murine *Mx1* gene; the related protein is murine Mx1 [17–20,27]. Murine Mx1 has a weak nuclear localization signal, is thus nuclear in its residence, and is antiviral towards influenza virus but not against cytoplasmic VSV [17–20,27]. Murine *Mx2* is not orthologous to either human *MxA* or human *MxB*, the protein is cytoplasmic in residence, and is antiviral against VSV [17–20]. Curiously, we showed that in many human Huh7 liver cancer cells exogenously expressed murine GFP-Mx1 can associate with cytoplasmic intermediate filaments [27]. Such cells now show an antiviral phenotype against VSV, in contrast to those with exclusively nuclear murine GFP-Mx1 residence [27]. We recently reported that *nuclear* murine GFP-Mx1 structures were also LLPS-driven biomolecular condensates which, like cytoplasmic human MxA condensates, disassembled in cells exposed to hypotonic ELB, and reassembled in cells then shifted to isotonic PBS [27]. Thus, not only did the subcellular localization of Mx family members contribute significantly to their respective antiviral spectrum, but also that cytoplasmic human MxB and nuclear murine Mx1 formed biomolecular condensates [27,61]. For our present discussion, we note that GTPase-null mutants of human MxA, which do not have antiviral activity, continue to form cytoplasmic condensates [17–20,59,60]. With respect to human MxA, we suggest that the cytoplasmic condensates likely represent storage granules/deposits of either of wt or mutant MxA species (Figure 2). The fraction of wt MxA in the cytoplasmic dispersed phase is likely the biologically antiviral mediator. Indeed, we observed that hypotonicity-driven disassembly of MxA in lung adenocarcinoma (A549) cells did not interfere with the antiviral activity of GFP-MxA against VSV [29].

We have previously demonstrated the rapid reversible disassembly and spontaneous reassembly of GFP-MxA condensates in human A549 lung adenocarcinoma cells in response to hypotonicity in the range 80–110 mOsm (one-fourth to one-third isotonicity [29]). The realization that normal human gingiva express MxA constitutively [13], and that saliva is normally corresponds to one-third plasma tonicity [8–11], and, moreover, that we repetitively imbibe drinks of low tonicity (water, tea, coffee) [10] prompted the present studies of the dynamic regulation of endogenous MxA and exogenously expressed GFP-MxA in oral epithelial cells (Figure 8).

Cells of OECM1 human oral carcinoma line grow profusely in full culture medium under isotonic conditions. Shifting these cultures to saliva-like one-third tonicity medium rapidly disassembled GFP-MxA condensates within 1–2 min. Maintaining these oral cells continuously in one-third tonicity led to a spontaneous recovery of GFP-MxA condensates within 4–7 min indicative of the existence of regulatory cell-volume recovery mechanisms and thus the ability of OECM1 oral cells to adjust to saliva-like tonicity (Figure 8). Both condensates of exogenously expressed GFP-MxA and IFN- $\lambda$ 1 induced endogenous MxA showed similar disassembly and reassembly responses. Parenthetically, OECM1 cells and GFP-MxA condensates in them survived at least 24 hr under one-third tonicity conditions (data not shown).

The biophysical mechanism for GFP-MxA condensate disassembly and its reassembly appears to be cytosol uncrowding and recrowding (Figure 8). That condensate formation can be driven by macromolecular crowding both in intact cell cytoplasm and in cell-free assays is now well established [25,26,41–45]. The cell activity dependent spontaneously regulated “macromolecular recrowding” and thus reassembly of cytoplasmic GFP-MxA condensates (Figure 8) is less understood. We obtained evidence showing the unquenching and re-quenching of calcein

fluorescence during this process in oral epithelial cells (Figure 5). Hypotonicity is thought to drive water into cells passively through aquaporin channels as part of cell swelling and an expansion of the plasma membrane. The reverse, regulated volume decrease (RVD), involves internalization of the “excess” plasma membrane into vacuole-like dilatations (VLDs) which appears to compress cytosolic space [24,29], and additionally involves a biochemical pathway initiated at the volume-sensitive WNK kinases (e.g. the ubiquitous WNK1 kinase) and OSR1 kinase, leading to activation of PTPs such as PTP2B by phosphorylation [30–33]. The activated PTPs enhance activity of K-Cl cotransporter channels (e.g. the ubiquitous KCC1) through dephosphorylation. Importantly the binding per se of ATP to KCC1 cotransporter is required for the KCC activity and the charge neutral exit of K and Cl from the cells (accompanied passively by water) and thus a reduction in cell volume (Figure 8).

In a previous study in A549 cells we reported that dynasore, a dynamin inhibitor, slowed GFP-MxA condensate reassembly [29]. Additionally, pretreatment of cells to 2-deoxyglucose (2-DG), which reduces intracellular levels of ATP, also slowed spontaneous GFP-MxA reassembly in A549 cells exposed to one-third tonicity [29] (Figure 8). In oral OECM1 cells we now report (a) the appearance of VLDs during recovery from hypotonicity (Figures 3B and 5B), and (b) that cyclosporin A, an inhibitor of PTP2B, and TEA, an “unselective” inhibitor of K channels slowed reassembly of hypotonicity-dispersed GFP-MxA into condensates (Figures 6, 7, S2). These data suggest that the pathways outlined in Figure 8 as the possible biochemical bases for RVD involved in the dynamic regulation of hypotonicity-driven GFP-MxA condensates merit further investigation. Moreover, the effects of environmental stressors such as temperature (hot or cold drinks) and pH (e.g. acidic drinks) on condensate biology in oral mucosal cells also merit investigation.

**Supplementary Materials:** The following supporting information can be downloaded at the website of this paper posted on Preprints.org., Figure S1: Sorbitol hypertonicity has little effect on GFP-MxA condensates in OECM1 cells. Figure S2: TEA slows spontaneous reassembly of GFP-MxA condensates in A549 cells exposed to one-third tonicity medium.

**Author Contributions:** PBS designed the study, PBS, carried out most of the experiments and imaging, HY carried out all the plasmid DNA preparations, PBS, SdiS-B and AC carried out the cell culture, AC carried out Western blotting, PBS and HY carried out the image quantitation and analyses, PBS wrote the manuscript. All authors approved the manuscript.

**Funding:** This research was supported by a grant from the New York Medical College, and personal funds of PBS.

**Acknowledgments:** We thank Drs. Joseph D. Eflinger (New York Medical College), Kenneth M. Lerea (New York Medical College), Eliana Scemes (New York Medical College) and Douglas S. Lyles (Wake Forest School of Medicine) for numerous helpful discussions.

**Data availability statement:** All data are available within the manuscript and in the Supplementary Materials.

**Conflicts of Interest:** All authors declare the absence of any conflict of interest. New York Medical College had no role in the design of the study; in the collection, analyses, or interpretation of data; in the writing of the manuscript, or in the decision to publish the results.

## Abbreviations

2-DG: 2-deoxyglucose; CLEM, correlated live-cell fluorescence and electron microscopy; CsA, cyclosporin A; ELB, hypotonic erythrocyte lysis buffer; ER, endoplasmic reticulum; FRAP, fluorescence recovery after photobleaching assay; GAPDH, glyceraldehyde 3-phosphate dehydrogenase; GFP, green fluorescent protein; HA, influenza virus hemagglutinin tag; Hex, 1,6-hexanediol; IDR, intrinsically disordered region; IFN, interferon; KCC, potassium-chloride cotransporter; LLPS, liquid-liquid phase separation; MLO, membraneless organelle; MxA, human myxovirus resistance protein A; post-infection; PBS, phosphate-buffered saline; PM, plasma membrane; PTP, protein phosphatase; RVD, regulated volume decrease; TEA, tetraethylammonium chloride; VLD, vacuole-like dilation; VSV, vesicular stomatitis virus; WNK, “with no lysine” kinase; wt, wild-type.

## References

- Rodriquez-Hernandez, C.J., Sokolski, K.J., Stocke, K.S. et al (2021) Microbiome-mediated incapacitation of interferon lambda production in the oral mucosa. *Proc Natl Acad Sci USA* **118**, e2105170118.
- Eke, P. I., Dye, B.A., Thornton-Evans, G.O., Genco, R.J. CDC Periodontal Disease Work Group (2012) Prevalence of periodontitis in adults in the United States: 2009 and 2010. *J Dent Res* **91**, 914-920.
- Abiko, Y., Shimizu, N., Yamaguchi, M., Suzuki, H., Takiguchi, H. (1998) Effect of aging on functional changes of periodontal tissue cells. *Acta Periodontol* **3**, 350-369.
- Andreescu, C. F., Mihai, L.L., Raescu, M., Tuculina, M.J., Chumpata, C.N., Ghergic, D.L. (2013) Age influence on periodontal tissues: a histological study. *Rom J Morphol Embryol* **54** (3 Suppl), 811-815.
- Chen, S., Zhou, D., Liu, O., Chen, H., Wang, Y., Zhou, Y. (2022) Cellular senescence and periodontitis: mechanisms and therapeutics. *Biology* **11**, 1419.
- Atukorallya D. S., Ratanake, R. K. (2021) Oral mucosa, saliva, and COVID-19 infection in oral health care. *Front Med* **8**, 656926.
- Okui, T., Matsuda, Y., Karino, M., Hideshima, K., Kanno, T. (2021) Oral mucosa could be an infectious target of SARS-CoV-2. *Healthcare* **9**, 1068.
- Santos, M.T.B.R., Ferreira, M.C.D., Guare, R.O. et al (2016) Gingivitis and salivary osmolality in children with cerebral palsy. *Int J Paediatr Dent* **26**, 463-470.
- Ruiz, L.A., Diniz, M.B, Loyola-Rodriguez, J.P., et al (2018) A controlled study comparing salivary osmolality, caries experience and caries risk in patients with cerebral palsy. *Med Oral Patol Oral Cir Bucal* **23**, e211-5.
- Feldman, M, Barnett, C. (1995) Relationships between the acidity and osmolality of popular beverages and reported postprandial heartburn. *Gastroenterology* **108**, 125-131.
- Sadowska, A., Swiderski, F, Laskowski, W. (2020) Osmolality of components and their application in the design of functional recovery drinks. *Appl Sci* **10**, 7663.
- Gresz, V., Kwon, T. H., Hurley, P. T., Varga, G., Zelles, T., Nielsen, S., Case, R. M., Steward, M. C. (2001) Identification and localization of aquaporin water channels in human salivary glands. *Am J Physiol Gastroint Liver Physiol* **281**: G247-G254.
- Mahanonda, R., Sa-Ard-Iam, N., Rerkyen, P., et al (2012) MxA expression induced by  $\alpha$ -defensin in healthy human periodontal tissue. *Eur J Immunol* **42**, 946-956.
- Imangulli, M.M., Swaim, W.D., League, S. C., Gress, R.E., Pavletic, S. Z. Hakim, F. T. (2009) Increased T-bet+ cytotoxic effectors and type I interferon-mediated processes in chronic graft-versus-host disease of the oral mucosa. *Blood* **113**, 3620-3630.
- Holzinger, D., Jorna, C., Stertz, S., Boisson-Dupuis, S., Thimme, R. et al (2007) Induction of MxA gene expression by influenza A virus requires Type I or Type III interferon signaling. *J Virol* **81**, 7776-7785.
- Pervolaraki K., Talemi, S. R., Albrecht, D. et al (2018) Differential induction of interferon stimulated genes between type I and type III interferons is independent of interferon receptor abundance. *PLoS Pathogen* **14**, e1007420.
- Haller, O. and Kochs, G. (2002). Interferon-induced mx proteins: dynamin-like GTPases with antiviral activity. *Traffic* **3**, 710-717.
- Haller, O., Staeheli, P., Kochs, G. (2007) Interferon-induced Mx proteins in antiviral host defense. *Biochimie* **89**, 812-818.
- Haller, O., Staeheli, P., Schwemmler, M. and Kochs, G. (2015) Mx GTPases: dynamin-like antiviral machines of innate immunity. *Trends Microbiol* **23**, 154-163.
- Verhelst, J., Hulpiau, P. and Saelens, X. (2013) Mx proteins: antiviral gatekeepers that restrain the uninvited. *Microbiol. Mol. Biol. Rev.* **77**, 551-566.
- Staeheli, P., Pavlovic, J. (1991) Inhibition of vesicular stomatitis virus mRNA synthesis by human MxA protein. *J Virol* **65**, 4498-4501.
- Schwemmler, M., Weining, K.C., Richter, M.F., Shumacher B., Staeheli, P. (1996) Vesicular stomatitis virus transcription inhibited by purified MxA protein. *Virology* **206**, 545-554.
- Steiner, F., Pavlovic, J. (2020) Subcellular localization of MxB determines its antiviral potential against influenza virus. *J Virol* **94**, e00125-e220
- Davis, D., Yuan, H., Liang, F.X., Yang, Y.M., Westley, J., Petzold, C., Dancel-Manning, K., Deng, Y., Sall, J. and Sehgal, P.B. (2019) Human antiviral protein MxA forms novel metastable membraneless cytoplasmic condensates exhibiting rapid reversible tonicity-driven phase transitions. *J Virol* **93**, e01014-19.
- Sehgal, P. B., Westley, J., Lerea, K. M. DiSenso-Browne, S. and Etlinger, J. D. (2020) Biomolecular condensates in cell biology and virology: phase-separated membraneless organelles (MLOs). *Analytical Biochem* **597**, 113691.
- Sehgal, P. B. and Lerea, K. L. (2020) Biomolecular condensates and membraneless organelles (MLOs). In Jez. Joseph (Eds) *Encyclopedia of Biological Chemistry*, 3<sup>rd</sup> Edn., vol. 1, pp 530-541. Oxford: Elsevier. <https://doi.org/10.1016/B978-0-12-819460-7.00003-7>

27. Sehgal, P. B., Yuan, H., Scott, M. F., Deng, Y., Liang, F-X. and Mackiewicz, A. (2020) Murine GFP-Mx1 forms phase-separated nuclear condensates and associates with cytoplasmic intermediate filaments: novel antiviral activity against vesicular stomatitis virus. *J Biol Chem* **294**, 15218-15234
28. Sehgal, P. B. (2021) Metastable biomolecular condensates of interferon-inducible antiviral Mx-family GTPases: a paradigm shift in the last three years. *J Biosci* **46**, 72. Doi: 10.1007/s12038-021-00187-x
29. Sehgal, P.B., Yuan, H., Jin, Y. (2022) Rapid reversible osmoregulation of cytoplasmic biomolecular condensates of human interferon- $\alpha$ -induced antiviral MxA GTPase. *Intl J Mol Sci* **23**, 12739.
30. Shen, M.R., Chou, C.Y., Ellory, J.C. (2000) Volume-sensitive KCl cotransport associated with human cervical carcinogenesis. *Pflugers Archiv* **440**, 751-760.
31. Bize, I., Guvenc, B., Robb, A., Buchbinder, G., Brugnara, C. (1999) Serine/threonine protein phosphatases a2d regulation of K-Cl cotransport in human erythrocytes. *Am J Physiol* **277**, C926-C936.
32. Akella, R., Humphreys J. M., Sekulski K., He, H., Durbacz, M. et al (2021) Osmosensing by WNK kinases. *Mol Biol Cell* **32**; 1614-1623.
33. Boyd-Shiwarski, C. R., Shiwarski, D. J., Griffiths S. E., Beacham, R. T., Norrell, L. et al (2022) WNK kinases sense molecular crowding and rescue cell volume via phase separation. *Cell* **185**: 4488-4506.
34. Carey, B. L., Ahmed, M., Puckett, S., Lyles, D. S. (2008) Early steps of the virus replication cycle are inhibited in prostate cancer cells resistant to oncolytic vesicular stomatitis virus. *J Virol* **82**:12104-12115.
35. Reuzeau, C.; Mills, L. R., Harris, J. A. Morris, C. E. (1995) Discrete and reversible vacuole-like dilations induced by osmomechanical perturbations of neurons. *J Membr Biol* **145**, 33-47.
36. Mola, M. G., Sparaneo, A., Gargano, C. D., Spray, D. C. et al (2016) The speed of swelling kinetics modulates cell volume regulation and calcium signaling in astrocytes: a different point of view on the role of aquaporins. *Glia* **64**: 139-154.
37. de los Heros, P., Kahle, K. T., Rinehart, J., Bobadilla, N. A., Vazquez, N., Cristobal, P. S., Mount, D. B., Lifton, R. P., Hebert, S. C., Gamba, G. (2006) WNK3 bypasses the tonicity requirement for K-Cl cotransporter activation via a phosphatase-dependent pathway. *Proc Natl Acad Sci USA* **103**: 1976-1981.
38. Yool, A. J., Brokl, O. H., Pannabecker, T. L., Dantzler, W. H., Stamer, W. D. (2002) Tetraethylammonium block of water flux in aquaporin-1 channels expressed in kidney thin limbs of Henle's loop and a kidney-derived cell line. *BMC Physiol* **2**: 4.
39. Stertz, S., Reichelt, M., Krijnse-Locker, J., Mackenzie, J., Simpson, J. C., Haller, O. and Kochs, G. (2006). Interferon-induced, antiviral human MxA protein localizes to a distinct subcompartment of the smooth endoplasmic reticulum. *J. Interferon Cytokine Res.* **26**(9):650-660.
40. Accola, M. A., Huang, B., Al Masri, A. and McNiven, M. A. (2002). The antiviral dynamin family member, MxA, tubulates lipids and localizes to the smooth endoplasmic reticulum. *J. Biol. Chem.* **277**(24):21829-21835.
41. Banani, S.F., Lee, H.O., Hyman, A.A. and Rosen, M.K. (2017) Biomolecular condensates: organizers of cellular biochemistry. *Nat Rev Mol Cell Biol.* **18**, 285-298.
42. Shin, Y. and Brangwynne, C.P. (2017) Liquid phase condensation in cell physiology and disease. *Science* **357**(6357) pii: eaaf4382. doi: 10.1126/science.aaf4382.
43. Alberti, S. (2017) The wisdom of crowds: regulating cell function through condensed states of living matter. *J Cell Sci.* **130**, 2789-2796.
44. Alberti, S., Gladfelter, A. and Mittag, T. (2019) Considerations and challenges in studying liquid-liquid phase separation and biomolecular condensates. *Cell* **176**, 419-434.
45. Shin, Y., Berry, J., Pannucci, N., Haataja, N. P. Toettcher, J. E. and Brangwynne, C. P. (2017) Spatiotemporal control of intracellular phase transitions using light-activated optoDroplets. *Cell* **168**, 159-171.
46. Heinrich, B.S., Maliga, Z., Stein, D.A., Hyman, A.A. and Whelan, S.P.J. (2018) Phase transitions drive the formation of vesicular stomatitis virus replication compartments. *MBio* **9**, e02290-17. doi: 10.1128/mBio.02290-17.
47. Dinh, P.X., Beurs, L.K., Das, P.B., Panda, D., Das, A. and Pattnaik, A.K. (2013) Induction of stress granule-like structures in vesicular stomatitis virus-infected cells. *J Virol* **87**, 372-383.
48. Nikolic, J., Bars, R.L., Lama, Z., Scrima, N., Lagaudriere-Gesbet, C., Gaudin, Y. and Blondel, D. (2017) Negri bodies are viral factories with properties of liquid organelles. *Nat Commun* **8**, 58. doi:10.1038/s41467-017-00102-9.
49. Hoenen, T., Shabman, R.S., Groseth, A., Herwig, A., Weber, M., Schudt, G., Dolnik, O., Basler, C.F., Becker, S. and Feldmann, H. (2012) Inclusion bodies are a site of ebolavirus replication. *J. Virol* **86**, 11779-11788.
50. Zhou, Y., Su, J.M., Samuel, C.E. and Ma, D. (2019) Measles virus forms inclusion bodies with properties of liquid organelles. *J Virol* **93**, e00948-19.
51. Guseva, S., Milles, G., Jensen, M. R., Salvi, N., Kleman, J. P., Maurin, D., Ruigrok, R. W. H. and Blackledge, M. (2020) Measles virus nucleo- and phosphoproteins form liquid-like phase-separated compartments that promote nucleocapsid assembly. *Science Advances* **6**: eaaz7095 (April 1, 2020).

52. Alenquer, M., Vale-Costa, S., Sousa, A.L., Etibor, T.A., Ferreira, F. and Amorim, M.J. (2019) Influenza A virus ribonucleoproteins form liquid organelles at endoplasmic reticulum exit sites. *Nature Comm* **10**, 1629. <https://doi.org/10.1038/s41467-019-09549-4>.
53. Peng, Q., Wang, L., Qin, Z., Wang, J., Zheng X., Wei, L., Zhang, X., Zhang, X. Liu, C., Li, Z., Wu, Y., Li, G., Yan, Q., Ma, J. (2020) Phase separation of Epstein-Barr virus EBNA2 and its coactivator EBNA1 controls gene expression. *J. Virol.* DOI: 10.1128/JVI.01771-19
54. Nevers, Q., Albertini, A. A., Lagaudriere-Gesbert, C. and Gardin Y. (2020) Negri bodies and other virus membrane-less replication compartments. *Biochim. Biophys. Acta (Molecular Cell Research)*, doi: <https://doi.org/10.1016/j.bbamcr.2020.118831>
55. Cubuk, J., Alston, J. J., Incicco, J. J., Singh, S., Stuchell-Brereton, M. D., Ward, M. D., Zimmerman, M. I., Vithani, N., Griffith, D., Wagoner, J. A., Bowman, G. R., Hall, K. B., Soranno, A. and Holehouse, A. S. (2021) The SARS-CoV-2 nucleocapsid protein is dynamic, disordered, and phase separates with RNA, *Nature Commun* **12**, 1936
56. Perdikari, T. M., Murthy, A. C., Ryan, V. H., Watters, S., Naik, M. T. and Fawzi, N. L. (2020) SARS-CoV-2 nucleocapsid protein undergoes liquid-liquid phase separation stimulated by RNA and partitions into phases of human ribonucleoproteins, *EMBO J* **39**, e106478
57. Iserman, C., Roden, C., Boerneke, M., Sealfon, R., McLaughlin, G., Jungreis, I., Park, C., Boppana, A., Fritch, E., Hou, Y. J., Theesfeld, C., Troyanskaya, O. G., Baric, R. S., Sheahan, T. P., Weeks, K. and Gladfelter, A. S. (2020) Genomic RNA elements drive the phase separation of the SARS CoV-2 nucleocapsid *Mol Cell* **80**: 1078-1091.e6
58. Carlson, C. R., J.B. Asfaha, C.M. Ghent, C.J. Howard, N. Hartooni, D.O. Morgan (2020) Phosphoregulation of phase separation by the SARS-CoV-2 N protein suggests a biophysical basis for its dual functions. *Mol Cell* **80**: 1092-1103.e4
59. Dick, A., Graf, L., Olal, D., von der Malsburg, A., Gao, S., Kochs, G. and Daumke, O. (2015) Role of nucleotide binding and GTPase domain dimerization in dynamin-like myxovirus resistance protein A for GTPase activation and antiviral activity. *J Biol Chem* **290**:12779–12792.
60. von der Malsburg, A., Abutbul-Ionita, I., Haller, O., Kochs, G. and Danino, D. (2011) Stalk domain of the dynamin-like MxA GTPase protein mediates membrane binding and liposome tubulation via the unstructured L4 loop. *J Biol Chem* **286**:37858–37865.
61. Moschonas, G. D., Delhay, L., Cooreman, R., Bhat, A., Sutter, D. D., Parthoens, E., Desmer, A, Maciejczak, A, Grzek, H., Lippens, S., Debyser, Z., Eyckerman, S., Saelens, X. (2023) MX2 restricts HIV-1 and herpes simplex virus-1 by forming cytoplasmic biomolecular condensates that mimic nuclear pore complexes. bioRxiv preprint doi: <https://doi.org/10.1101/2023.06.22.545931>

**Disclaimer/Publisher's Note:** The statements, opinions and data contained in all publications are solely those of the individual author(s) and contributor(s) and not of MDPI and/or the editor(s). MDPI and/or the editor(s) disclaim responsibility for any injury to people or property resulting from any ideas, methods, instructions or products referred to in the content.