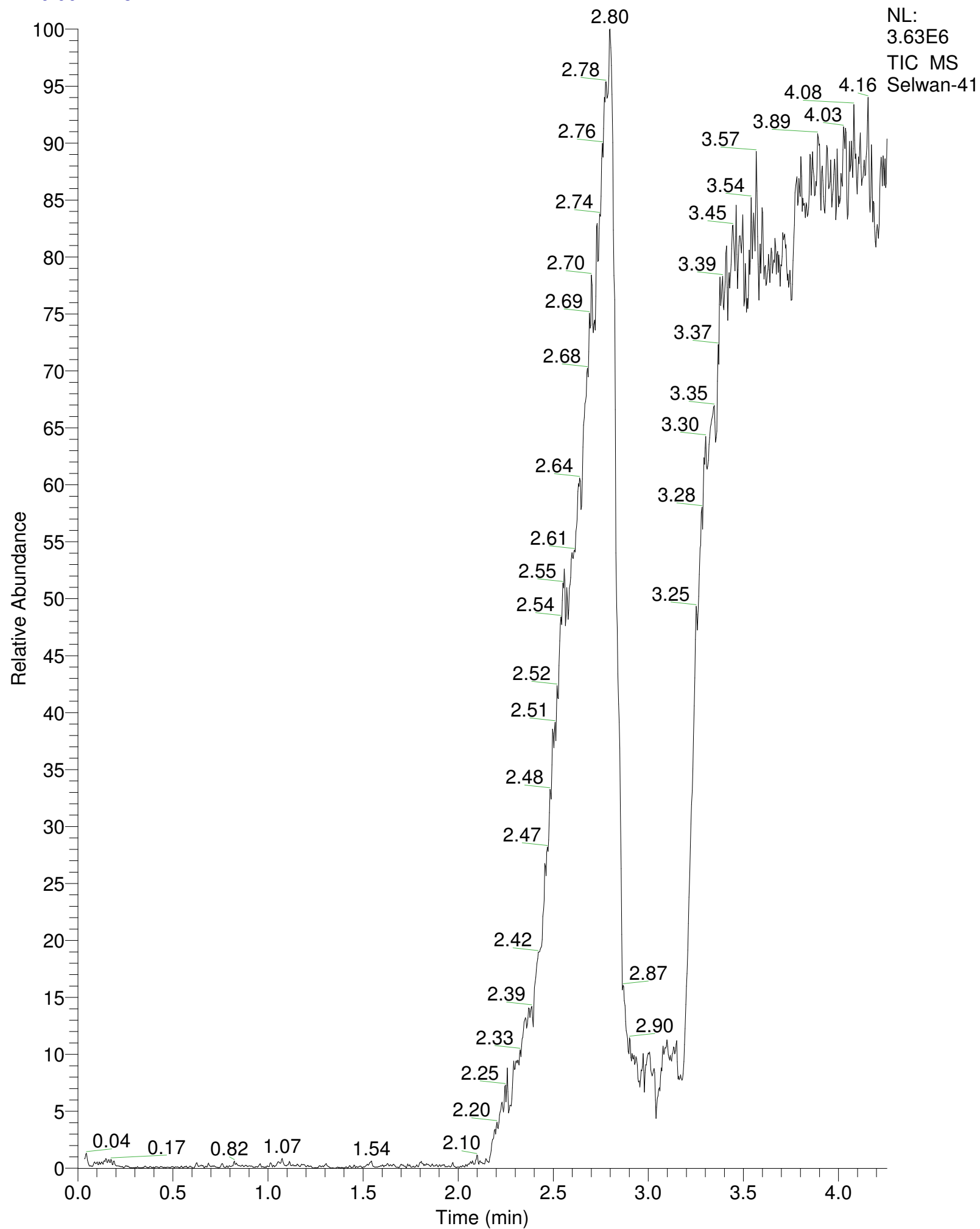
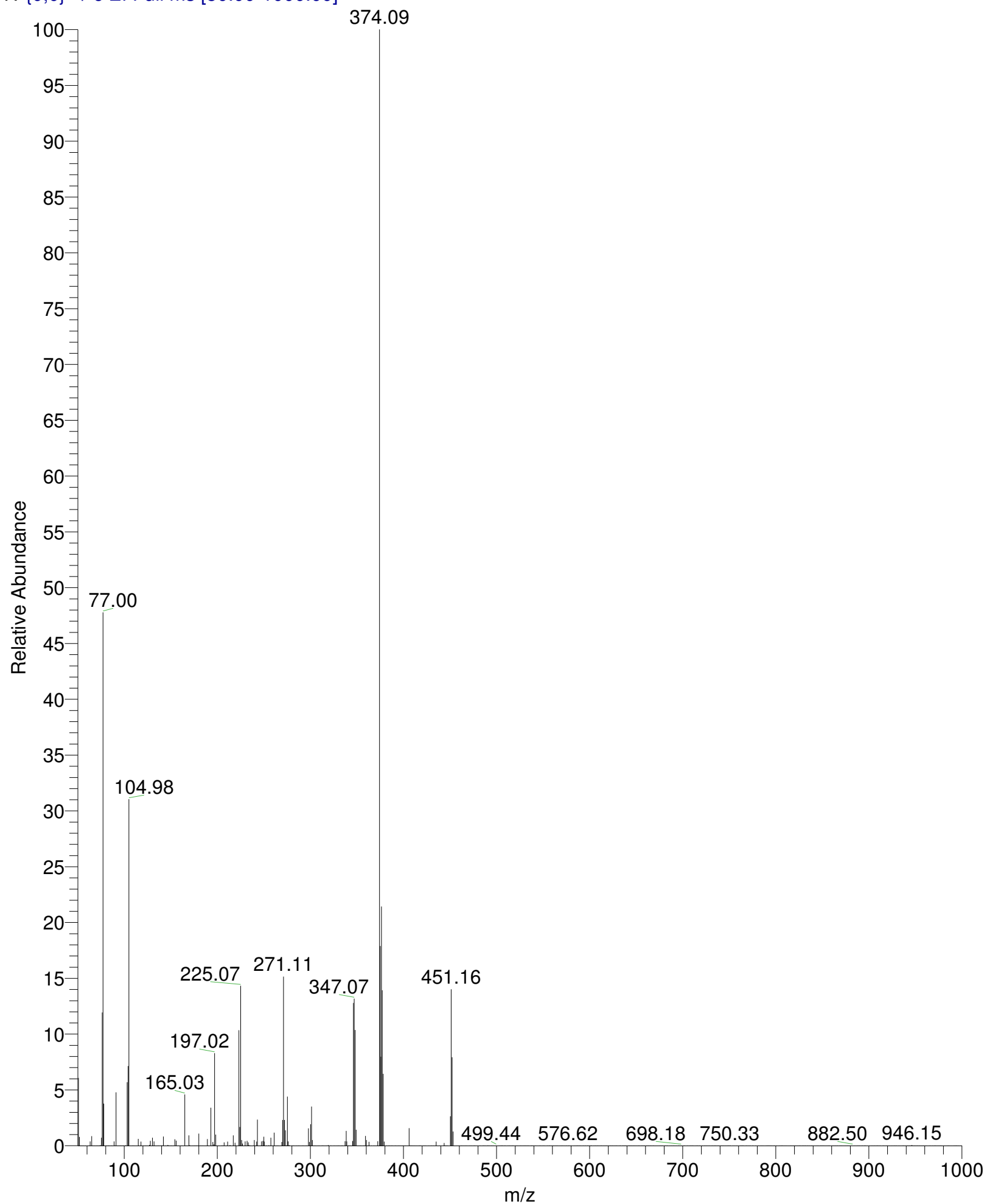


RT: 0.00 - 4.25



Selwan-41 #929 RT: 3.19 AV: 1 NL: 8.65E4

T: {0,0} + c EI Full ms [50.00-1000.00]



Selwan-41#929 RT: 3.19

T: {0,0} + c EI Full ms [50.00-1000.00]

m/z= 50.00-1000.04

m/z	Intensity	Relative
50.82	5242.1	6.06
51.73	667.4	0.77
52.64	3.4	0.00
53.23	0.4	0.00
53.84	0.0	0.00
54.76	0.1	0.00
55.55	0.0	0.00
56.23	0.3	0.00
57.62	0.3	0.00
58.30	0.2	0.00
59.86	0.1	0.00
61.15	14.3	0.02
62.08	0.3	0.00
62.62	0.0	0.00
63.24	319.4	0.37
64.89	735.2	0.85
65.55	2.3	0.00
66.24	0.3	0.00
67.23	0.3	0.00
67.77	0.0	0.00
68.48	0.0	0.00
69.56	0.2	0.00
70.13	0.1	0.00
70.95	0.0	0.00
71.58	0.0	0.00
72.31	0.0	0.00
73.06	2.3	0.00
74.14	39.9	0.05
75.40	611.9	0.71
76.28	10326.0	11.94
77.00	41334.1	47.78
78.01	3256.5	3.76
79.08	0.2	0.00
80.14	0.1	0.00
81.08	0.0	0.00
82.35	0.1	0.00
83.00	0.0	0.00
83.63	0.0	0.00
84.62	0.0	0.00
85.97	0.0	0.00
86.56	0.0	0.00
87.09	0.0	0.00
88.95	329.9	0.38
89.46	0.2	0.00
90.29	14.9	0.02
91.12	4133.2	4.78
92.49	0.0	0.00
93.27	0.0	0.00
94.03	0.0	0.00
94.78	0.0	0.00
95.64	14.3	0.02
96.17	0.0	0.00
96.76	0.1	0.00
97.53	0.0	0.00
98.35	0.1	0.00

Selwan-41#929 RT: 3.19

T: {0,0} + c EI Full ms [50.00-1000.00]

m/z= 50.00-1000.04

m/z	Intensity	Relative
98.92	0.0	0.00
99.55	0.0	0.00
100.28	0.3	0.00
101.27	16.4	0.02
101.99	11.4	0.01
103.04	4908.1	5.67
104.07	6173.8	7.14
104.98	26856.1	31.04
106.35	2.5	0.00
107.43	0.0	0.00
108.64	0.0	0.00
109.28	0.0	0.00
110.15	0.0	0.00
110.94	0.0	0.00
112.24	0.1	0.00
113.22	0.0	0.00
114.91	521.3	0.60
115.58	0.4	0.00
116.76	2.0	0.00
117.97	312.3	0.36
119.21	0.1	0.00
120.13	0.0	0.00
120.85	0.0	0.00
122.16	0.0	0.00
122.92	0.0	0.00
123.90	0.0	0.00
124.86	0.0	0.00
126.85	50.2	0.06
127.36	0.1	0.00
127.99	366.0	0.42
128.80	2.4	0.00
130.32	613.1	0.71
131.18	0.2	0.00
132.01	325.9	0.38
132.76	0.0	0.00
133.54	0.1	0.00
134.15	0.0	0.00
135.30	0.0	0.00
136.16	0.0	0.00
136.81	0.1	0.00
137.38	0.0	0.00
138.32	0.1	0.00
139.27	0.1	0.00
140.19	20.4	0.02
141.38	0.3	0.00
141.97	703.2	0.81
143.18	0.1	0.00
143.91	0.0	0.00
144.59	0.0	0.00
145.26	0.0	0.00
146.67	48.3	0.06
147.47	0.0	0.00
148.10	0.0	0.00
148.89	0.0	0.00
149.48	0.0	0.00

Selwan-41#929 RT: 3.19

T: {0,0} + c EI Full ms [50.00-1000.00]

m/z= 50.00-1000.04

m/z	Intensity	Relative
150.48	0.0	0.00
151.08	0.0	0.00
152.46	1.7	0.00
153.02	0.2	0.00
154.19	483.3	0.56
155.02	0.1	0.00
155.84	379.1	0.44
157.11	0.0	0.00
157.89	0.0	0.00
158.43	0.0	0.00
159.60	0.0	0.00
160.65	0.0	0.00
161.67	0.0	0.00
162.62	0.0	0.00
163.30	0.0	0.00
165.03	3968.7	4.59
166.34	0.0	0.00
167.16	0.1	0.00
168.00	0.4	0.00
169.27	791.9	0.92
170.13	24.3	0.03
170.75	0.0	0.00
171.72	0.0	0.00
173.05	0.0	0.00
173.87	0.0	0.00
175.08	0.0	0.00
175.60	0.0	0.00
176.21	0.0	0.00
177.12	0.0	0.00
177.69	0.0	0.00
178.28	0.0	0.00
179.29	0.0	0.00
180.08	926.5	1.07
181.23	0.0	0.00
181.82	0.0	0.00
182.72	0.0	0.00
183.58	0.0	0.00
184.19	0.0	0.00
185.17	0.0	0.00
186.28	0.0	0.00
187.39	0.0	0.00
188.18	0.0	0.00
189.21	510.8	0.59
190.06	0.0	0.00
190.84	0.1	0.00
191.43	0.0	0.00
193.07	2942.1	3.40
193.75	0.0	0.00
194.36	0.0	0.00
195.09	272.3	0.31
196.20	92.4	0.11
197.02	7159.0	8.27
198.23	853.6	0.99
198.75	0.0	0.00
199.38	0.0	0.00

Selwan-41#929 RT: 3.19

T: {0,0} + c EI Full ms [50.00-1000.00]

m/z= 50.00-1000.04

m/z	Intensity	Relative
200.16	0.1	0.00
201.11	0.0	0.00
201.97	0.0	0.00
203.81	0.1	0.00
204.61	0.1	0.00
205.18	0.0	0.00
205.70	0.0	0.00
206.23	0.4	0.00
207.31	249.3	0.29
208.40	0.0	0.00
209.18	0.0	0.00
210.02	0.0	0.00
211.04	313.3	0.36
212.76	0.0	0.00
213.50	37.4	0.04
214.02	11.3	0.01
214.76	0.0	0.00
216.07	0.0	0.00
217.13	795.1	0.92
217.65	0.0	0.00
218.95	220.0	0.25
219.64	0.0	0.00
220.25	0.0	0.00
221.22	0.0	0.00
222.35	0.0	0.00
223.09	8947.3	10.34
224.02	1438.9	1.66
225.07	12392.8	14.32
226.05	428.3	0.50
226.97	164.2	0.19
227.86	0.0	0.00
228.70	0.0	0.00
229.88	331.4	0.38
230.59	0.0	0.00
231.90	377.0	0.44
233.18	245.3	0.28
233.88	56.2	0.06
234.43	0.0	0.00
235.36	0.0	0.00
235.94	0.0	0.00
238.13	0.1	0.00
239.08	0.0	0.00
239.58	435.8	0.50
240.46	0.0	0.00
241.36	0.0	0.00
242.24	315.6	0.36
243.04	2021.4	2.34
244.19	0.2	0.00
245.35	0.0	0.00
246.06	0.0	0.00
246.67	0.0	0.00
247.36	320.8	0.37
248.05	0.0	0.00
248.88	375.3	0.43
249.85	683.0	0.79

Selwan-41#929 RT: 3.19

T: {0,0} + c EI Full ms [50.00-1000.00]

m/z= 50.00-1000.04

m/z	Intensity	Relative
250.35	313.4	0.36
250.94	0.0	0.00
251.94	0.0	0.00
252.68	0.0	0.00
253.28	0.0	0.00
255.19	15.7	0.02
256.27	0.3	0.00
257.36	615.3	0.71
258.61	0.0	0.00
259.37	0.0	0.00
260.11	0.0	0.00
261.07	998.7	1.15
262.48	0.0	0.00
263.12	0.1	0.00
264.10	0.0	0.00
265.03	0.0	0.00
265.86	0.0	0.00
267.59	0.2	0.00
269.17	275.8	0.32
270.14	1984.1	2.29
271.11	13095.3	15.14
272.05	1985.8	2.30
273.16	1192.2	1.38
274.13	30.1	0.03
275.13	3792.0	4.38
276.09	324.9	0.38
277.20	43.6	0.05
277.83	0.0	0.00
279.41	0.0	0.00
280.25	0.0	0.00
281.03	0.0	0.00
281.58	0.0	0.00
282.35	0.1	0.00
283.29	0.0	0.00
284.63	0.0	0.00
285.18	0.0	0.00
286.43	0.0	0.00
287.00	0.0	0.00
287.55	0.0	0.00
288.48	0.0	0.00
289.35	0.0	0.00
290.73	0.1	0.00
291.46	0.0	0.00
292.09	0.0	0.00
293.02	0.0	0.00
294.05	0.0	0.00
295.16	0.0	0.00
295.77	0.0	0.00
296.39	0.1	0.00
297.86	1334.5	1.54
298.83	283.0	0.33
299.40	0.3	0.00
300.20	1651.6	1.91
301.15	3033.1	3.51
302.10	426.7	0.49

Selwan-41#929 RT: 3.19

T: {0,0} + c EI Full ms [50.00-1000.00]

m/z= 50.00-1000.04

m/z	Intensity	Relative
303.13	0.0	0.00
303.64	0.0	0.00
304.51	0.1	0.00
305.22	0.0	0.00
305.97	0.0	0.00
307.17	0.0	0.00
308.53	11.4	0.01
309.21	0.0	0.00
310.10	0.0	0.00
311.64	2.1	0.00
312.40	0.0	0.00
312.95	0.0	0.00
313.54	0.0	0.00
314.19	0.0	0.00
315.06	0.0	0.00
316.08	0.1	0.00
316.81	0.0	0.00
317.54	0.1	0.00
318.36	0.0	0.00
319.07	37.1	0.04
320.21	0.2	0.00
321.29	0.2	0.00
321.88	0.1	0.00
322.82	0.1	0.00
324.95	0.0	0.00
325.58	0.0	0.00
327.14	0.2	0.00
328.31	0.1	0.00
329.30	0.0	0.00
329.99	0.0	0.00
330.65	0.1	0.00
331.65	0.0	0.00
332.92	0.1	0.00
333.56	0.0	0.00
334.14	0.0	0.00
335.15	0.0	0.00
336.47	0.0	0.00
337.07	342.2	0.40
338.31	1139.2	1.32
338.97	325.0	0.38
340.03	0.2	0.00
340.71	0.0	0.00
341.21	0.0	0.00
341.81	0.0	0.00
342.75	0.1	0.00
344.01	0.1	0.00
345.40	361.8	0.42
346.18	11061.9	12.79
347.07	11398.1	13.17
348.05	8956.9	10.35
349.15	1224.9	1.42
350.04	0.1	0.00
350.60	0.0	0.00
351.59	0.0	0.00
352.30	0.0	0.00



Selwan-41#929 RT: 3.19

T: {0,0} + c EI Full ms [50.00-1000.00]

m/z= 50.00-1000.04

m/z	Intensity	Relative
353.26	0.0	0.00
353.94	0.0	0.00
354.79	0.0	0.00
356.20	0.0	0.00
357.07	0.0	0.00
357.66	0.0	0.00
358.34	0.0	0.00
359.13	745.6	0.86
360.13	424.1	0.49
361.51	0.1	0.00
362.15	0.0	0.00
362.96	287.5	0.33
363.68	0.0	0.00
365.17	0.1	0.00
365.69	0.0	0.00
367.29	0.0	0.00
368.13	0.0	0.00
368.82	0.0	0.00
369.73	0.0	0.00
370.52	0.0	0.00
371.27	0.0	0.00
372.32	333.2	0.39
372.90	0.0	0.00
374.09	86515.3	100.00
375.10	15470.1	17.88
375.70	6893.8	7.97
376.20	18538.9	21.43
377.17	12037.4	13.91
378.23	5563.4	6.43
379.21	311.4	0.36
380.21	0.0	0.00
381.19	0.0	0.00
381.77	0.0	0.00
383.19	0.1	0.00
383.98	0.0	0.00
384.54	0.1	0.00
385.32	0.1	0.00
386.33	0.0	0.00
387.16	0.0	0.00
387.75	0.0	0.00
388.56	0.0	0.00
390.03	0.0	0.00
391.14	0.0	0.00
391.78	0.0	0.00
393.05	0.0	0.00
394.19	0.0	0.00
394.98	0.0	0.00
395.89	0.0	0.00
396.67	0.0	0.00
397.70	0.0	0.00
398.75	0.2	0.00
399.31	0.1	0.00
399.95	0.0	0.00
400.52	0.0	0.00
401.59	0.0	0.00

Selwan-41#929 RT: 3.19

T: {0,0} + c EI Full ms [50.00-1000.00]

m/z= 50.00-1000.04

m/z	Intensity	Relative
402.30	0.0	0.00
403.38	0.0	0.00
404.35	0.0	0.00
406.02	1344.4	1.55
407.03	0.0	0.00
407.55	0.0	0.00
408.06	0.0	0.00
408.56	0.0	0.00
409.30	0.0	0.00
410.06	0.0	0.00
411.10	0.0	0.00
411.82	0.0	0.00
412.59	0.0	0.00
413.92	0.0	0.00
414.91	0.0	0.00
416.19	0.0	0.00
416.81	0.0	0.00
417.39	0.0	0.00
418.08	0.0	0.00
418.95	0.1	0.00
420.59	0.0	0.00
421.76	0.0	0.00
422.36	0.0	0.00
423.44	0.0	0.00
424.20	0.0	0.00
426.36	0.0	0.00
427.32	0.0	0.00
428.65	0.0	0.00
429.53	0.0	0.00
430.18	0.0	0.00
431.30	0.0	0.00
432.38	0.3	0.00
433.13	0.1	0.00
434.38	0.1	0.00
435.14	312.7	0.36
436.76	0.0	0.00
438.17	0.0	0.00
438.93	0.0	0.00
439.96	0.0	0.00
440.53	0.1	0.00
441.98	0.0	0.00
442.89	0.0	0.00
443.54	202.8	0.23
444.22	0.0	0.00
444.77	0.0	0.00
445.28	0.0	0.00
445.87	0.0	0.00
446.50	0.0	0.00
447.25	0.0	0.00
447.78	0.0	0.00
450.24	2269.9	2.62
451.16	12120.7	14.01
452.17	6848.2	7.92
453.18	1091.0	1.26
454.65	0.0	0.00

Selwan-41#929 RT: 3.19

T: {0,0} + c EI Full ms [50.00-1000.00]

m/z= 50.00-1000.04

m/z	Intensity	Relative
455.26	0.0	0.00
457.03	0.0	0.00
458.11	0.0	0.00
459.07	0.0	0.00
459.94	0.0	0.00
460.62	0.0	0.00
461.73	0.0	0.00
462.41	0.0	0.00
463.32	0.0	0.00
464.51	0.0	0.00
465.72	0.0	0.00
466.85	0.1	0.00
467.70	0.0	0.00
469.11	0.0	0.00
470.60	0.0	0.00
471.47	0.0	0.00
472.45	0.0	0.00
473.10	0.0	0.00
474.37	0.0	0.00
475.41	0.0	0.00
476.12	0.0	0.00
476.72	0.0	0.00
477.59	0.0	0.00
478.93	0.0	0.00
479.96	0.0	0.00
481.25	0.0	0.00
482.13	0.0	0.00
482.87	0.0	0.00
484.55	0.0	0.00
485.67	0.0	0.00
486.18	0.0	0.00
486.79	0.0	0.00
487.50	0.0	0.00
488.66	0.0	0.00
489.90	0.0	0.00
490.41	0.0	0.00
490.93	0.0	0.00
491.62	0.0	0.00
492.43	0.0	0.00
493.52	0.0	0.00
494.30	0.0	0.00
494.97	0.0	0.00
495.48	0.0	0.00
496.58	0.0	0.00
497.27	0.1	0.00
498.68	0.0	0.00
499.44	0.1	0.00
500.34	0.0	0.00
502.21	0.0	0.00
503.20	0.0	0.00
503.98	0.0	0.00
504.85	0.0	0.00
505.47	0.0	0.00
506.02	0.0	0.00
506.67	0.0	0.00

Selwan-41#929 RT: 3.19

T: {0,0} + c EI Full ms [50.00-1000.00]

m/z= 50.00-1000.04

m/z	Intensity	Relative
507.93	0.0	0.00
508.84	0.0	0.00
509.41	0.0	0.00
511.20	0.0	0.00
512.56	0.0	0.00
513.32	0.0	0.00
514.18	0.0	0.00
514.84	0.0	0.00
515.95	0.0	0.00
516.78	0.0	0.00
517.48	0.0	0.00
518.18	0.0	0.00
519.70	0.0	0.00
520.52	0.0	0.00
521.35	0.0	0.00
522.57	0.1	0.00
523.37	0.0	0.00
524.71	0.0	0.00
525.38	0.0	0.00
526.04	0.1	0.00
527.01	0.0	0.00
528.04	0.0	0.00
529.01	0.0	0.00
529.70	0.0	0.00
530.55	0.0	0.00
531.18	0.0	0.00
532.02	0.1	0.00
532.70	0.0	0.00
533.64	0.0	0.00
534.29	0.0	0.00
535.29	0.1	0.00
536.64	0.0	0.00
537.31	0.0	0.00
537.86	0.0	0.00
538.37	0.0	0.00
539.32	0.0	0.00
539.91	0.0	0.00
541.14	0.0	0.00
541.81	0.0	0.00
543.09	0.0	0.00
544.42	0.0	0.00
545.88	0.0	0.00
546.53	0.0	0.00
547.48	0.0	0.00
548.94	0.0	0.00
549.81	0.0	0.00
550.70	0.0	0.00
551.75	0.0	0.00
554.10	0.0	0.00
555.03	0.0	0.00
556.11	0.0	0.00
556.79	0.0	0.00
557.51	0.0	0.00
558.92	0.0	0.00
559.72	0.0	0.00

Selwan-41#929 RT: 3.19

T: {0,0} + c EI Full ms [50.00-1000.00]

m/z= 50.00-1000.04

m/z	Intensity	Relative
560.68	0.0	0.00
561.23	0.0	0.00
562.25	0.0	0.00
563.44	0.1	0.00
564.14	0.0	0.00
565.47	0.0	0.00
566.06	0.0	0.00
567.64	0.0	0.00
568.87	0.0	0.00
569.98	0.0	0.00
570.72	0.0	0.00
571.94	0.0	0.00
573.03	0.0	0.00
574.64	0.0	0.00
575.14	0.0	0.00
576.62	2.0	0.00
577.46	0.0	0.00
578.11	0.1	0.00
579.38	0.0	0.00
580.30	0.0	0.00
580.87	0.0	0.00
582.86	0.0	0.00
583.76	0.0	0.00
584.65	0.0	0.00
585.83	0.0	0.00
586.51	0.0	0.00
587.14	0.0	0.00
588.08	0.0	0.00
588.89	0.0	0.00
589.48	0.0	0.00
590.22	0.0	0.00
591.75	0.0	0.00
593.04	0.0	0.00
593.89	0.0	0.00
594.99	0.0	0.00
595.72	0.0	0.00
597.16	0.0	0.00
597.83	0.0	0.00
598.42	0.0	0.00
599.40	0.0	0.00
599.97	0.0	0.00
600.75	0.0	0.00
601.36	0.0	0.00
601.93	0.0	0.00
602.51	0.0	0.00
604.37	0.0	0.00
605.18	0.0	0.00
606.26	0.0	0.00
607.08	0.0	0.00
608.18	0.0	0.00
608.94	0.0	0.00
609.82	0.0	0.00
611.06	0.0	0.00
611.75	0.0	0.00
612.41	0.0	0.00

Selwan-41#929 RT: 3.19

T: {0,0} + c EI Full ms [50.00-1000.00]

m/z= 50.00-1000.04

m/z	Intensity	Relative
612.94	0.0	0.00
613.73	0.0	0.00
614.69	0.0	0.00
615.61	0.0	0.00
616.36	0.0	0.00
617.10	0.0	0.00
617.83	0.0	0.00
618.50	0.2	0.00
619.60	0.0	0.00
620.18	0.0	0.00
620.75	0.0	0.00
621.68	0.0	0.00
622.31	0.0	0.00
622.93	0.0	0.00
623.93	0.0	0.00
624.58	0.0	0.00
625.54	0.0	0.00
626.47	0.0	0.00
627.49	0.0	0.00
628.30	0.0	0.00
628.96	0.0	0.00
630.13	0.0	0.00
631.39	0.0	0.00
632.30	0.0	0.00
632.94	0.0	0.00
633.47	0.0	0.00
634.81	0.0	0.00
635.51	0.0	0.00
636.07	0.0	0.00
636.77	0.0	0.00
637.39	0.0	0.00
637.96	0.0	0.00
638.57	0.0	0.00
639.25	0.0	0.00
639.82	0.0	0.00
640.99	0.0	0.00
641.52	0.0	0.00
642.11	0.0	0.00
642.78	0.0	0.00
643.31	0.0	0.00
643.87	0.0	0.00
644.80	0.0	0.00
645.43	0.0	0.00
646.66	0.0	0.00
647.21	0.0	0.00
647.98	0.0	0.00
648.82	0.0	0.00
649.68	0.0	0.00
650.78	0.0	0.00
651.80	0.0	0.00
652.53	0.0	0.00
653.09	0.0	0.00
653.98	0.0	0.00
655.08	0.0	0.00
655.75	0.0	0.00

Selwan-41#929 RT: 3.19

T: {0,0} + c EI Full ms [50.00-1000.00]

m/z= 50.00-1000.04

m/z	Intensity	Relative
656.66	0.0	0.00
657.23	0.0	0.00
657.97	0.0	0.00
658.56	0.0	0.00
659.10	0.0	0.00
660.58	0.0	0.00
661.14	0.0	0.00
661.96	0.0	0.00
662.72	0.0	0.00
663.32	0.0	0.00
663.92	0.0	0.00
664.68	0.0	0.00
665.34	0.0	0.00
665.95	0.0	0.00
667.07	0.0	0.00
668.07	0.0	0.00
668.58	0.0	0.00
669.24	0.0	0.00
670.27	0.0	0.00
671.48	0.0	0.00
672.67	0.0	0.00
673.95	0.0	0.00
674.95	0.0	0.00
675.96	0.0	0.00
676.50	0.0	0.00
677.23	0.0	0.00
678.02	0.0	0.00
678.76	0.0	0.00
680.19	0.0	0.00
680.84	0.0	0.00
681.48	0.0	0.00
682.08	0.0	0.00
683.04	0.0	0.00
683.59	0.0	0.00
684.19	0.0	0.00
685.99	0.0	0.00
686.80	0.0	0.00
688.07	0.0	0.00
688.65	0.0	0.00
689.80	0.0	0.00
690.54	0.0	0.00
691.27	0.0	0.00
692.68	0.0	0.00
693.34	0.0	0.00
694.89	0.0	0.00
695.45	0.0	0.00
696.03	0.0	0.00
696.65	0.0	0.00
697.63	0.0	0.00
698.18	0.1	0.00
699.15	0.1	0.00
700.53	0.0	0.00
701.24	0.0	0.00
701.79	0.0	0.00
702.43	0.0	0.00

Selwan-41#929 RT: 3.19

T: {0,0} + c EI Full ms [50.00-1000.00]

m/z= 50.00-1000.04

m/z	Intensity	Relative
704.44	0.0	0.00
705.13	0.0	0.00
706.49	0.0	0.00
707.52	0.0	0.00
708.23	0.0	0.00
708.84	0.0	0.00
709.72	0.0	0.00
710.40	0.0	0.00
711.04	0.0	0.00
712.09	0.0	0.00
713.56	0.0	0.00
714.50	0.0	0.00
715.45	0.0	0.00
716.07	0.0	0.00
717.05	0.0	0.00
717.83	0.0	0.00
718.76	0.0	0.00
719.82	0.0	0.00
721.19	0.0	0.00
721.71	0.0	0.00
723.07	0.0	0.00
723.72	0.0	0.00
724.89	0.0	0.00
725.53	0.0	0.00
726.58	0.0	0.00
727.59	0.0	0.00
728.42	0.0	0.00
729.52	0.0	0.00
730.86	0.0	0.00
731.74	0.0	0.00
732.47	0.0	0.00
733.57	0.0	0.00
734.42	0.0	0.00
735.07	0.0	0.00
735.85	0.0	0.00
737.14	0.0	0.00
737.96	0.0	0.00
738.87	0.0	0.00
740.03	0.0	0.00
740.89	0.0	0.00
741.47	0.0	0.00
742.13	0.0	0.00
743.01	0.0	0.00
743.66	0.1	0.00
744.48	0.0	0.00
745.46	0.0	0.00
746.32	0.0	0.00
747.46	0.0	0.00
748.26	0.0	0.00
748.85	0.0	0.00
749.46	0.0	0.00
750.33	1.1	0.00
750.93	0.0	0.00
751.46	0.0	0.00
753.69	0.0	0.00



Selwan-41#929 RT: 3.19

T: {0,0} + c EI Full ms [50.00-1000.00]

m/z= 50.00-1000.04

m/z	Intensity	Relative
754.89	0.0	0.00
756.22	0.0	0.00
757.64	0.0	0.00
758.60	0.0	0.00
759.69	0.0	0.00
761.04	0.0	0.00
762.03	0.0	0.00
762.70	0.0	0.00
763.49	0.0	0.00
764.25	0.0	0.00
764.85	0.0	0.00
765.51	0.0	0.00
767.25	0.0	0.00
768.38	0.0	0.00
768.93	0.0	0.00
769.96	0.0	0.00
771.14	0.0	0.00
772.01	0.0	0.00
772.67	0.0	0.00
774.62	0.0	0.00
775.13	0.0	0.00
776.04	0.0	0.00
777.88	0.0	0.00
778.85	0.0	0.00
780.39	0.0	0.00
781.15	0.0	0.00
782.04	0.0	0.00
783.17	0.0	0.00
784.15	0.0	0.00
784.85	0.0	0.00
786.01	0.0	0.00
786.70	0.0	0.00
788.31	0.0	0.00
789.40	0.0	0.00
790.17	0.0	0.00
790.98	0.0	0.00
791.53	0.0	0.00
792.07	0.0	0.00
792.85	0.0	0.00
793.39	0.0	0.00
794.09	0.0	0.00
794.80	0.0	0.00
795.63	0.1	0.00
796.67	0.0	0.00
797.81	0.0	0.00
798.32	0.0	0.00
798.87	0.0	0.00
800.10	0.0	0.00
801.03	0.2	0.00
802.50	0.0	0.00
803.78	0.0	0.00
804.44	0.0	0.00
805.33	0.0	0.00
806.25	0.0	0.00
806.77	0.0	0.00

Selwan-41#929 RT: 3.19

T: {0,0} + c EI Full ms [50.00-1000.00]

m/z= 50.00-1000.04

m/z	Intensity	Relative
807.29	0.0	0.00
808.38	0.0	0.00
809.65	0.0	0.00
810.38	0.0	0.00
811.53	0.0	0.00
812.86	0.0	0.00
814.13	0.0	0.00
815.33	0.1	0.00
815.94	0.0	0.00
816.96	0.0	0.00
817.47	0.0	0.00
818.61	0.0	0.00
819.27	0.0	0.00
819.97	0.0	0.00
820.49	0.0	0.00
821.08	0.0	0.00
821.82	0.0	0.00
823.03	0.0	0.00
823.63	0.0	0.00
824.70	0.0	0.00
825.21	0.0	0.00
825.72	0.0	0.00
826.50	0.0	0.00
827.64	0.0	0.00
828.57	0.0	0.00
829.18	0.0	0.00
829.87	0.0	0.00
830.91	0.0	0.00
831.59	0.0	0.00
832.22	0.0	0.00
833.34	0.0	0.00
834.14	0.0	0.00
834.84	0.0	0.00
836.17	0.0	0.00
836.73	0.0	0.00
838.02	0.0	0.00
838.66	0.0	0.00
839.29	0.0	0.00
840.02	0.0	0.00
841.21	0.0	0.00
842.95	0.0	0.00
844.17	0.0	0.00
845.11	0.0	0.00
846.23	0.0	0.00
847.58	0.0	0.00
848.23	0.0	0.00
848.98	0.0	0.00
849.82	0.0	0.00
850.35	0.0	0.00
851.19	0.0	0.00
851.72	0.0	0.00
852.93	0.0	0.00
853.85	0.0	0.00
854.95	0.0	0.00
855.75	0.0	0.00

Selwan-41#929 RT: 3.19

T: {0,0} + c EI Full ms [50.00-1000.00]

m/z= 50.00-1000.04

m/z	Intensity	Relative
856.66	0.0	0.00
857.16	0.0	0.00
857.97	0.0	0.00
859.62	0.0	0.00
860.39	0.0	0.00
861.23	0.0	0.00
862.03	0.0	0.00
862.69	0.0	0.00
863.42	0.0	0.00
864.30	0.0	0.00
865.47	0.0	0.00
866.10	0.0	0.00
866.66	0.0	0.00
868.16	0.0	0.00
868.73	0.0	0.00
869.50	0.0	0.00
870.23	0.0	0.00
870.85	0.0	0.00
871.67	0.0	0.00
872.82	0.0	0.00
873.65	0.0	0.00
874.53	0.1	0.00
875.33	0.0	0.00
876.20	0.0	0.00
876.85	0.0	0.00
877.75	0.0	0.00
878.43	0.0	0.00
879.37	0.0	0.00
880.05	0.0	0.00
880.84	0.0	0.00
881.55	0.0	0.00
882.50	0.3	0.00
883.99	0.0	0.00
884.86	0.0	0.00
886.18	0.1	0.00
887.09	0.0	0.00
887.96	0.0	0.00
889.00	0.0	0.00
889.54	0.0	0.00
890.24	0.0	0.00
891.52	0.0	0.00
892.53	0.0	0.00
893.23	0.0	0.00
894.05	0.0	0.00
895.06	0.1	0.00
895.62	0.0	0.00
896.13	0.0	0.00
896.67	0.0	0.00
897.84	0.0	0.00
899.00	0.0	0.00
900.62	0.0	0.00
901.20	0.0	0.00
902.66	0.1	0.00
903.23	0.0	0.00
904.30	0.0	0.00

Selwan-41#929 RT: 3.19

T: {0,0} + c EI Full ms [50.00-1000.00]

m/z= 50.00-1000.04

m/z	Intensity	Relative
905.36	0.0	0.00
906.00	0.0	0.00
906.86	0.0	0.00
908.05	0.0	0.00
908.75	0.0	0.00
909.36	0.0	0.00
910.03	0.0	0.00
911.10	0.1	0.00
911.81	0.0	0.00
912.66	0.0	0.00
914.64	0.0	0.00
915.36	0.0	0.00
916.05	0.0	0.00
916.80	0.0	0.00
918.01	0.0	0.00
918.97	0.0	0.00
919.48	0.0	0.00
920.01	0.0	0.00
920.67	0.0	0.00
921.59	0.0	0.00
922.56	0.0	0.00
923.95	0.0	0.00
925.00	0.0	0.00
926.35	0.0	0.00
927.24	0.0	0.00
928.02	0.0	0.00
928.96	0.0	0.00
929.65	0.0	0.00
931.31	0.0	0.00
932.42	0.0	0.00
933.57	0.0	0.00
935.24	0.0	0.00
936.10	0.0	0.00
936.87	0.0	0.00
937.51	0.0	0.00
938.72	0.0	0.00
939.59	0.2	0.00
940.46	0.0	0.00
941.34	0.0	0.00
942.02	0.0	0.00
942.61	0.0	0.00
943.58	0.0	0.00
944.10	0.0	0.00
944.67	0.0	0.00
945.28	0.0	0.00
946.15	38.6	0.04
946.84	0.0	0.00
947.82	0.0	0.00
948.56	0.0	0.00
949.21	0.0	0.00
949.92	0.0	0.00
951.23	0.0	0.00
951.78	0.0	0.00
952.31	0.0	0.00
953.28	0.0	0.00

Selwan-41#929 RT: 3.19

T: {0,0} + c EI Full ms [50.00-1000.00]

m/z= 50.00-1000.04

m/z	Intensity	Relative
954.13	0.0	0.00
954.68	0.0	0.00
955.59	0.0	0.00
956.53	0.0	0.00
957.58	0.0	0.00
958.26	0.0	0.00
958.83	0.0	0.00
959.92	0.0	0.00
960.66	0.0	0.00
961.72	0.0	0.00
962.44	0.0	0.00
963.95	0.0	0.00
964.94	0.0	0.00
965.54	0.0	0.00
966.67	0.0	0.00
968.10	0.0	0.00
969.00	0.0	0.00
970.39	0.0	0.00
970.90	0.0	0.00
971.63	0.0	0.00
972.63	0.0	0.00
973.57	0.0	0.00
974.92	0.0	0.00
975.55	0.0	0.00
976.43	0.0	0.00
977.00	0.0	0.00
977.52	0.0	0.00
978.21	0.0	0.00
979.52	0.0	0.00
980.25	0.0	0.00
981.27	0.0	0.00
982.41	0.0	0.00
983.61	0.0	0.00
984.53	0.1	0.00
985.15	0.0	0.00
985.73	0.0	0.00
986.40	0.0	0.00
987.23	0.0	0.00
988.41	0.0	0.00
989.41	0.0	0.00
990.76	0.0	0.00
991.48	0.0	0.00
992.34	0.0	0.00
992.89	0.0	0.00
993.56	0.0	0.00
994.26	0.0	0.00
994.80	0.0	0.00
995.77	0.0	0.00
996.65	0.0	0.00
997.88	0.1	0.00
998.92	0.0	0.00
999.67	0.0	0.00