

Supporting Information for
1-(3-(2-(Dimethylammonio)ethyl)-1H-indol-5-yl)-N-methylmethanesulfonamide succinate hemi(ethanol solvate)

Petr A. Buikin, Anna V. Vologzhanina, and Alexander A. Korlyukov

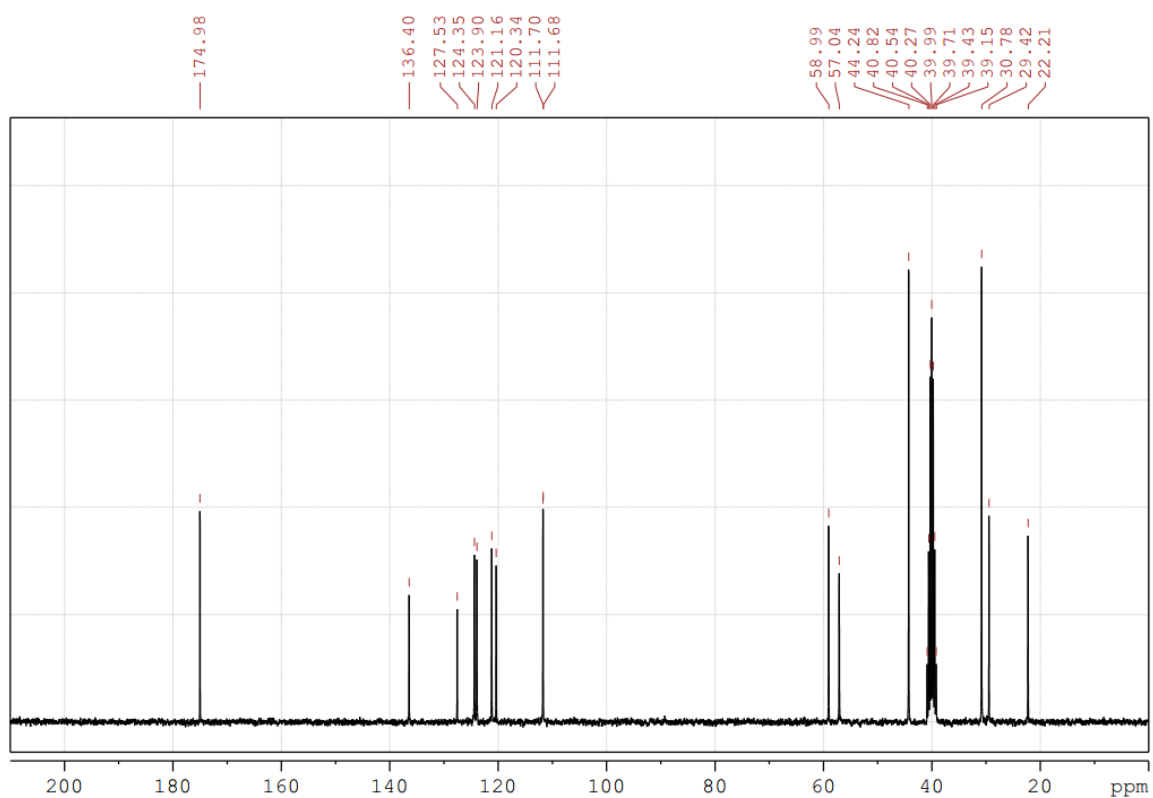


Figure S1. ¹³C NMR spectrum of sumatriptan succinate hemi(ethanol solvate) in DMSO solution.

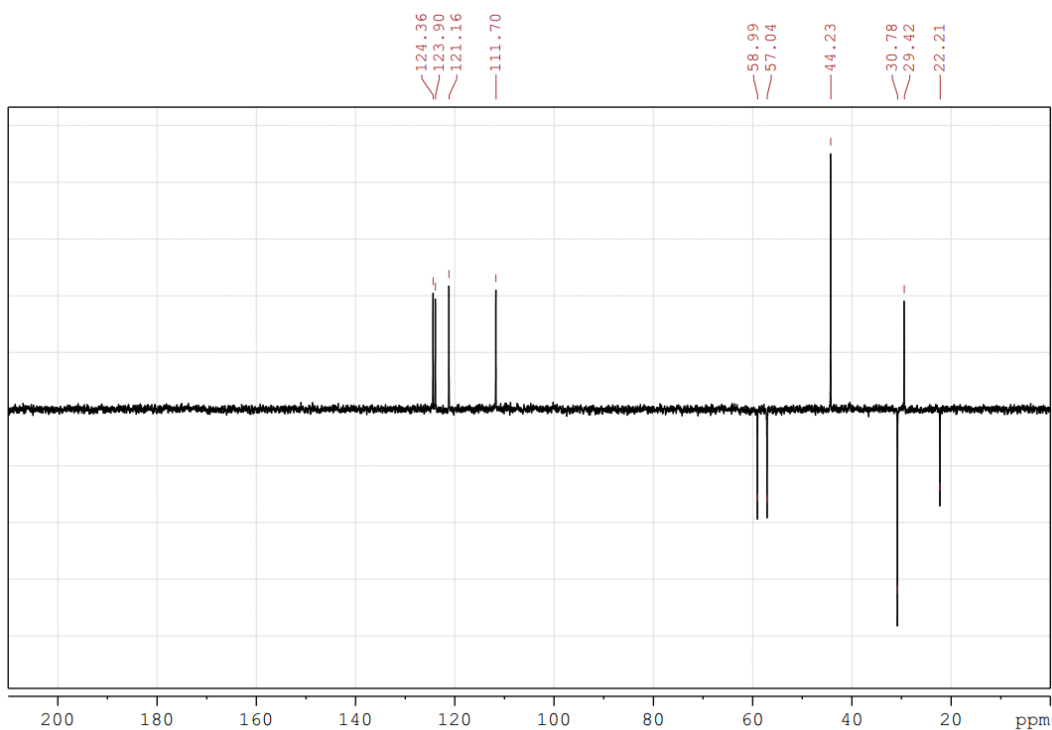


Figure S2. DEPT ¹³C NMR spectrum of sumatriptan succinate hemi(ethanol solvate) in DMSO solution.

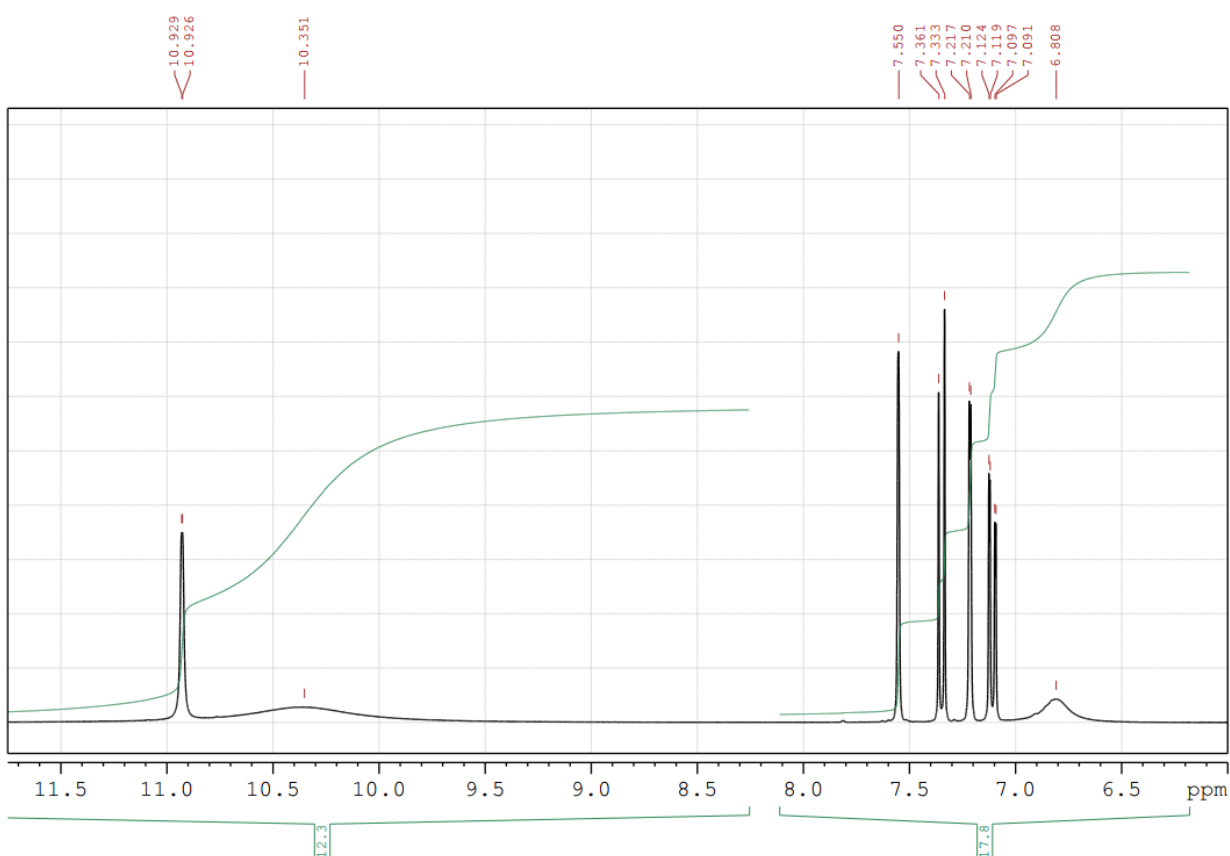
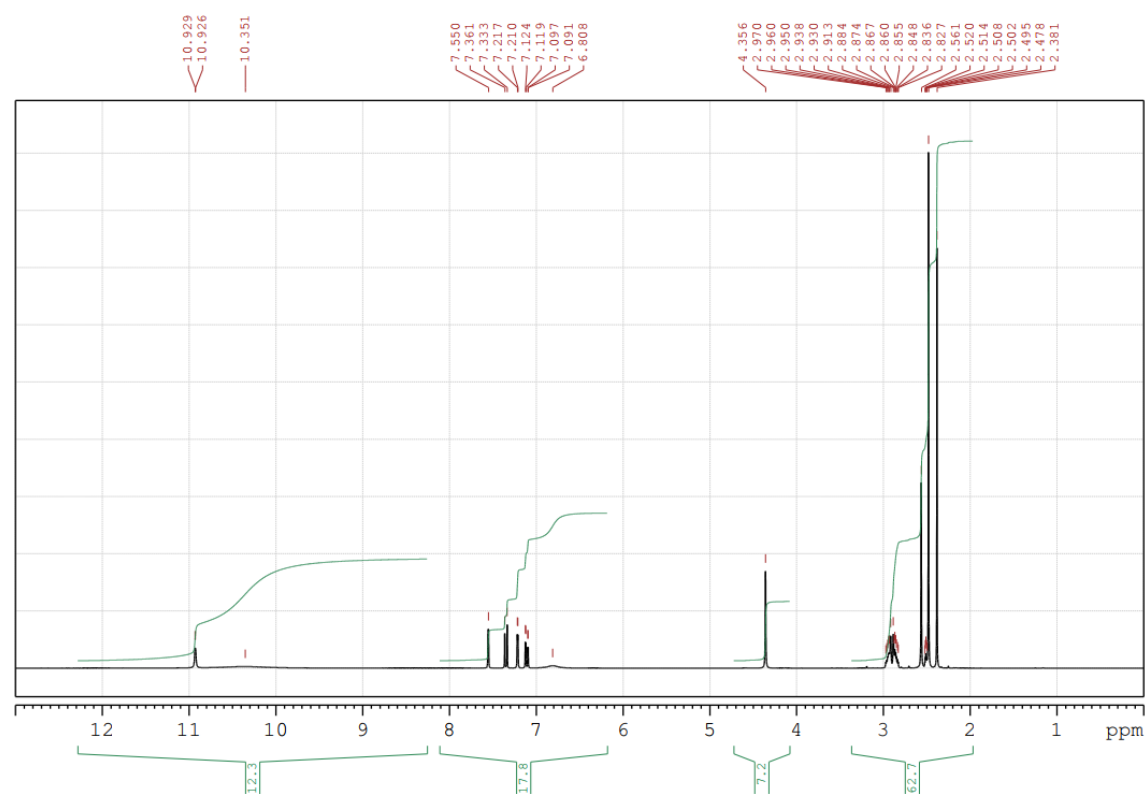


Figure S3. ^1H NMR spectrum of sumatriptan succinate hemi(ethanol solvate) in DMSO solution.

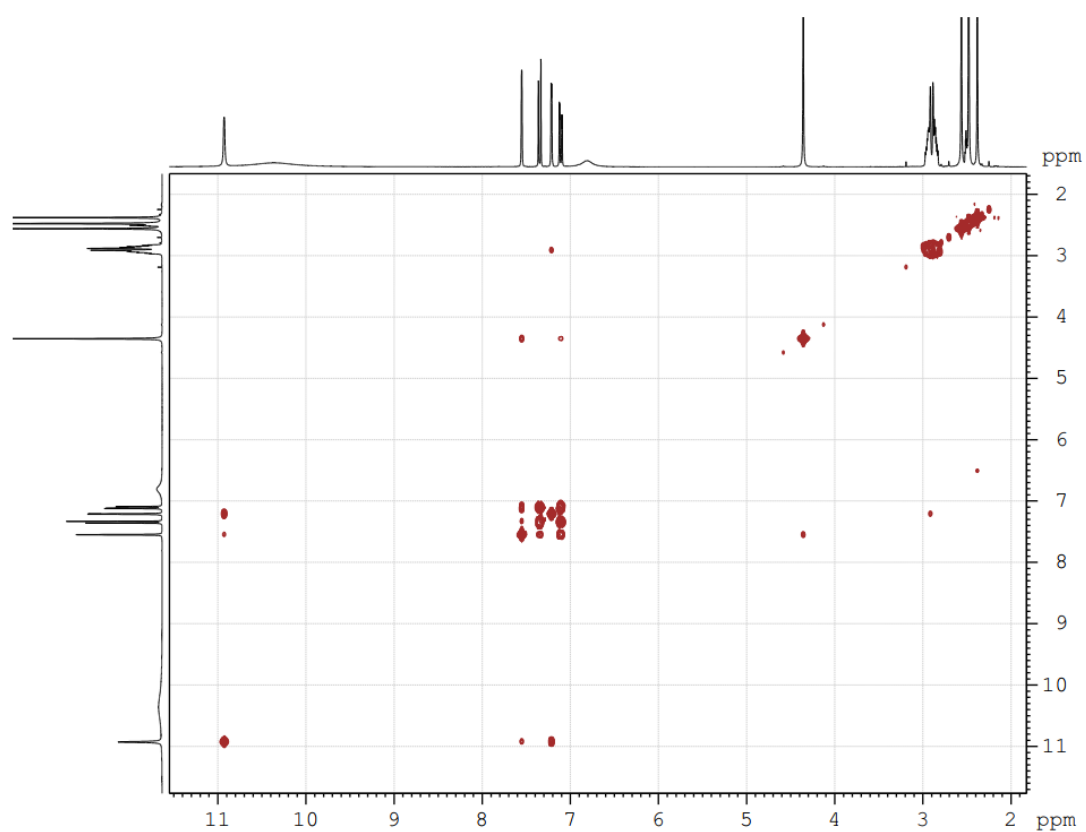


Figure S4. 2D NMR ^{13}C - ^1H COSY spectrum of sumatriptan succinate hemi(ethanol solvate) in DMSO solution.

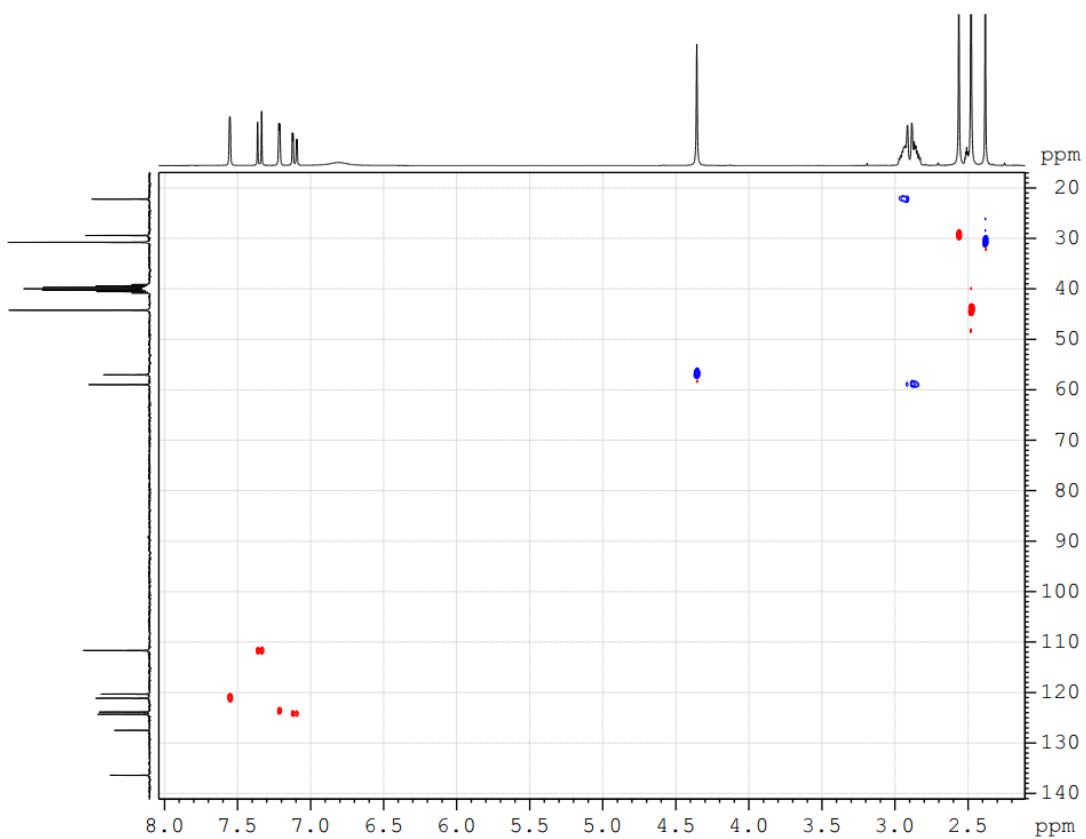


Figure S5. 2D NMR ^{13}C - ^1H HSQC spectrum of sumatriptan succinate hemi(ethanol solvate) in DMSO solution.

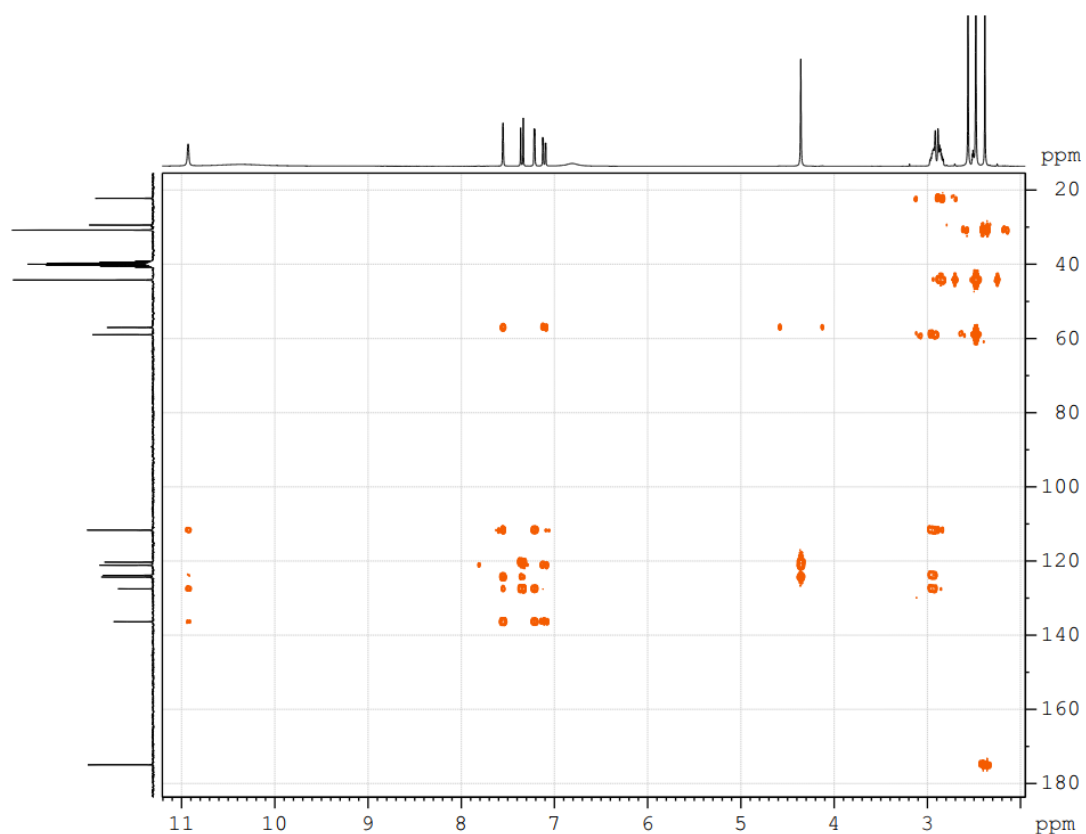


Figure S6. 2D NMR ^{13}C - ^1H HMBC spectrum of sumatriptan succinate hemi(ethanol solvate) in DMSO solution.

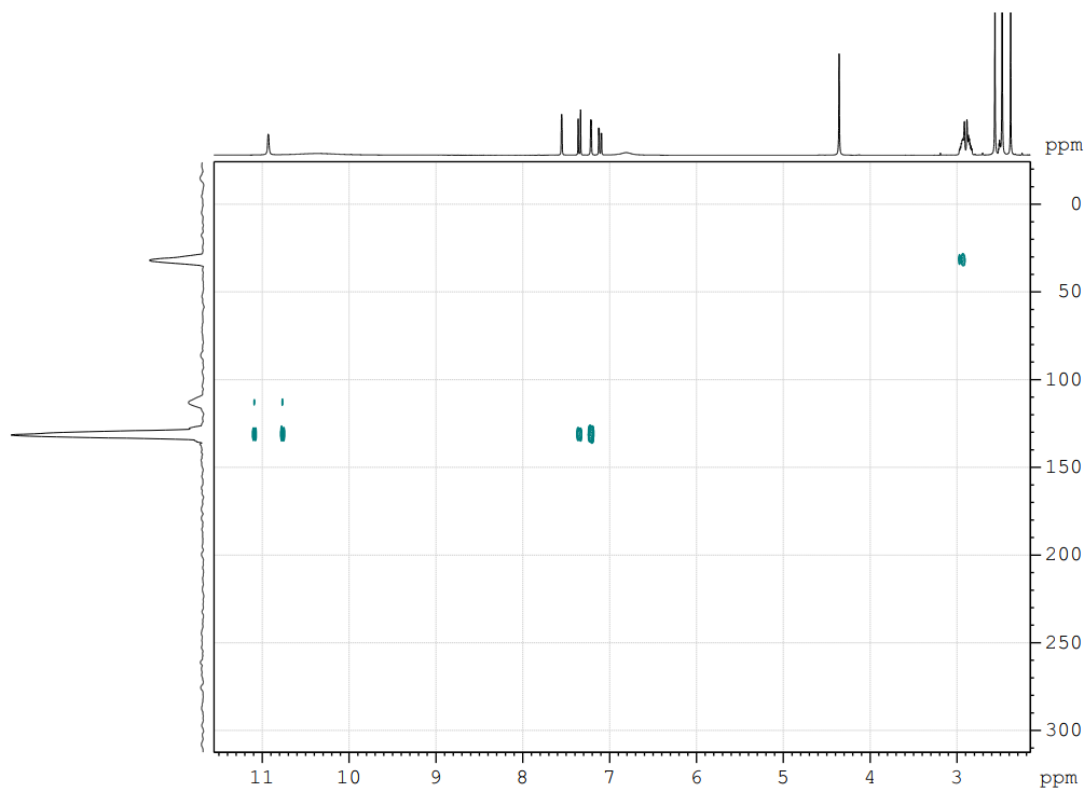


Figure S7. 2D ^1H - ^{15}N HMBC spectrum of sumatriptan succinate hemi(ethanol solvate) in DMSO solution.

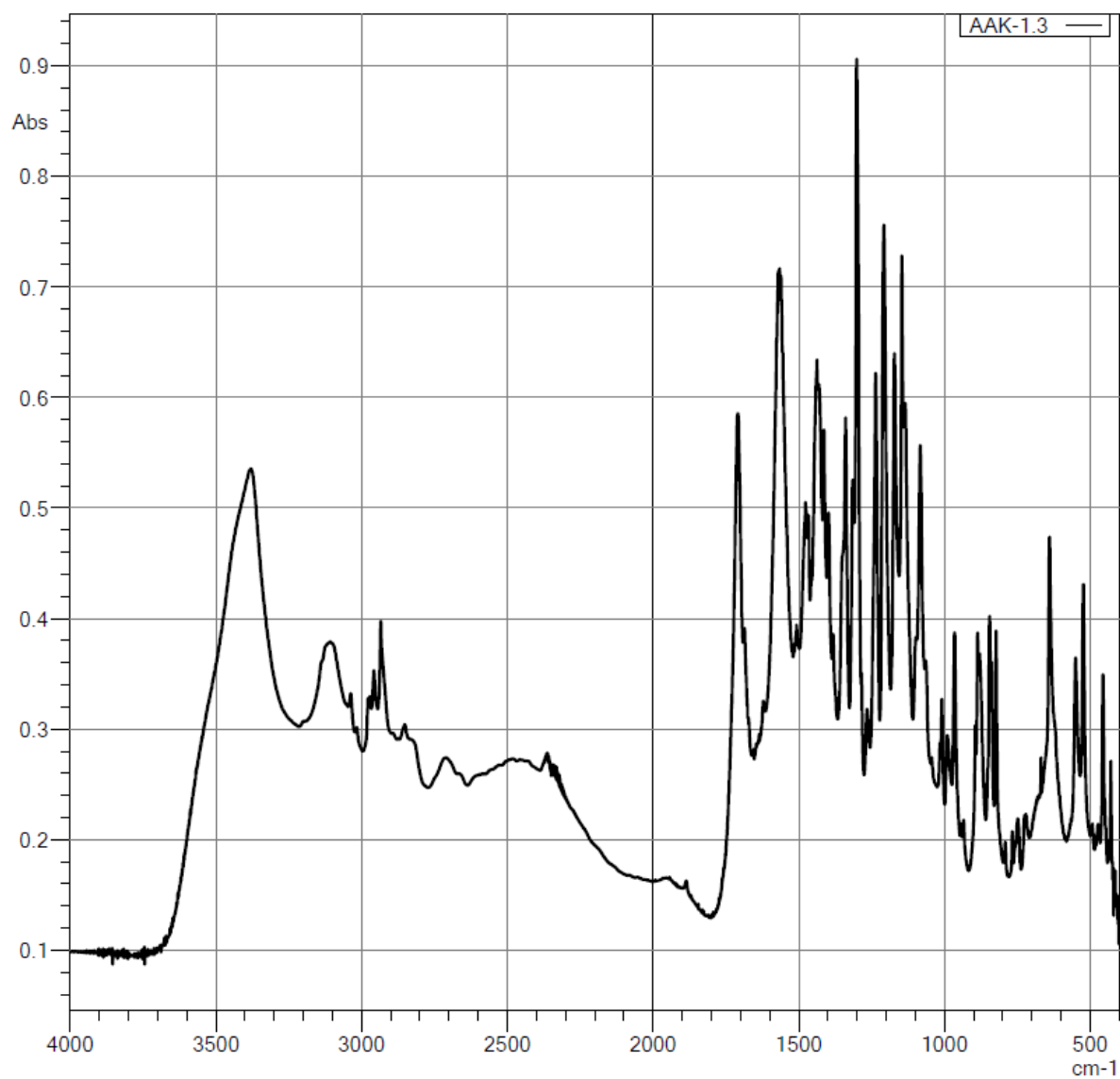


Figure S8. FTIR spectrum (in KBr pellets) of sumatriptan succinate hemi(ethanol solvate).