

ARCHEOMETRICAL CHARACTERIZATION OF ROCK-ART
PIGMENTS FROM PUERTO ROQUE OPEN-AIR ROCK ART SHELTER
(VALENCIA DE ALCÁNTARA, EXTREMADURA, SPAIN)

SUPPLEMENTARY MATERIALS

FIGURES 4 - 22

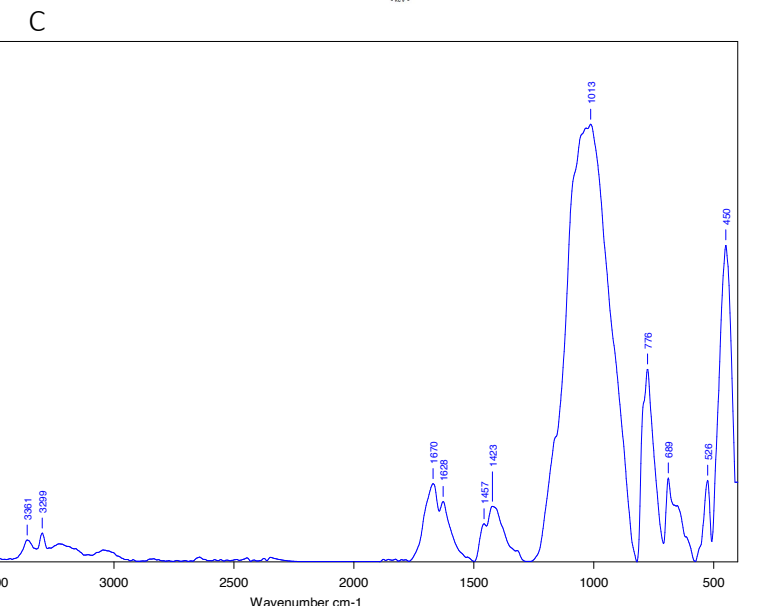
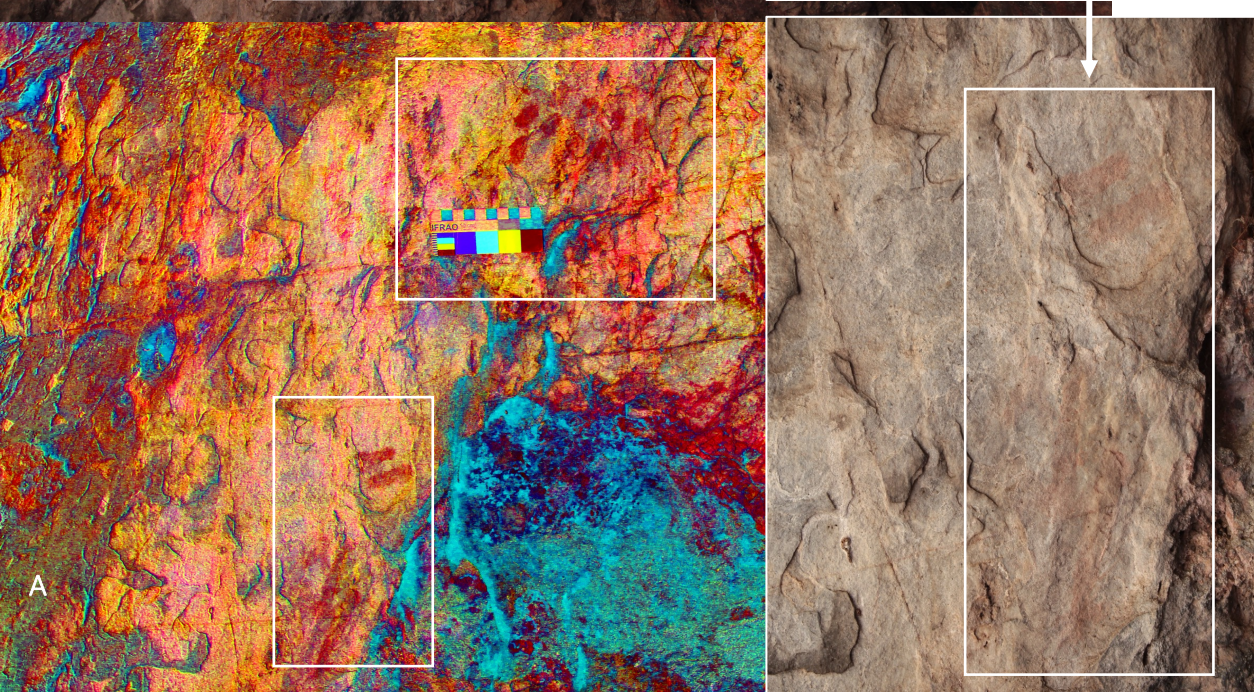
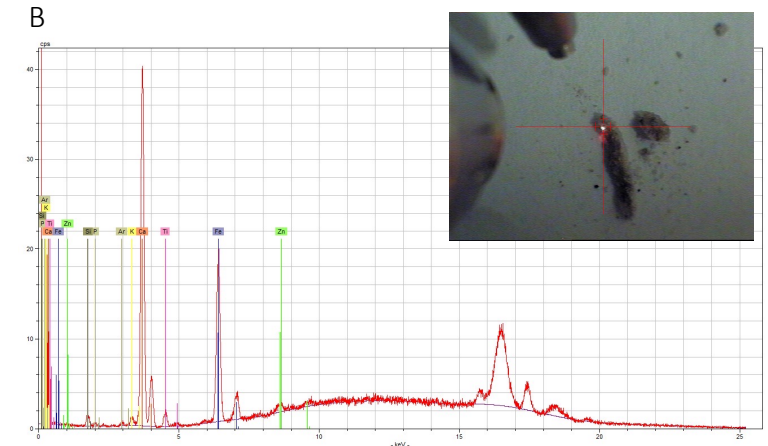
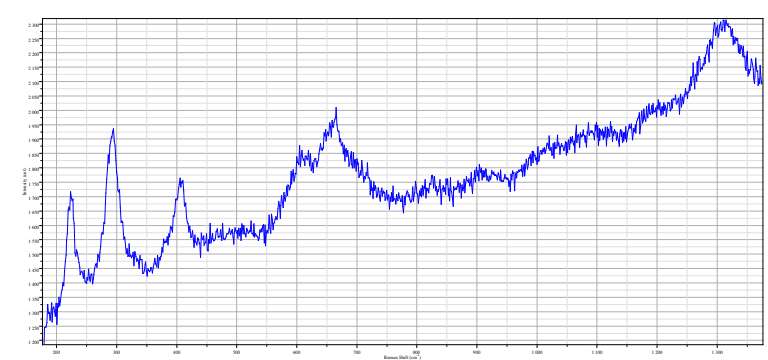
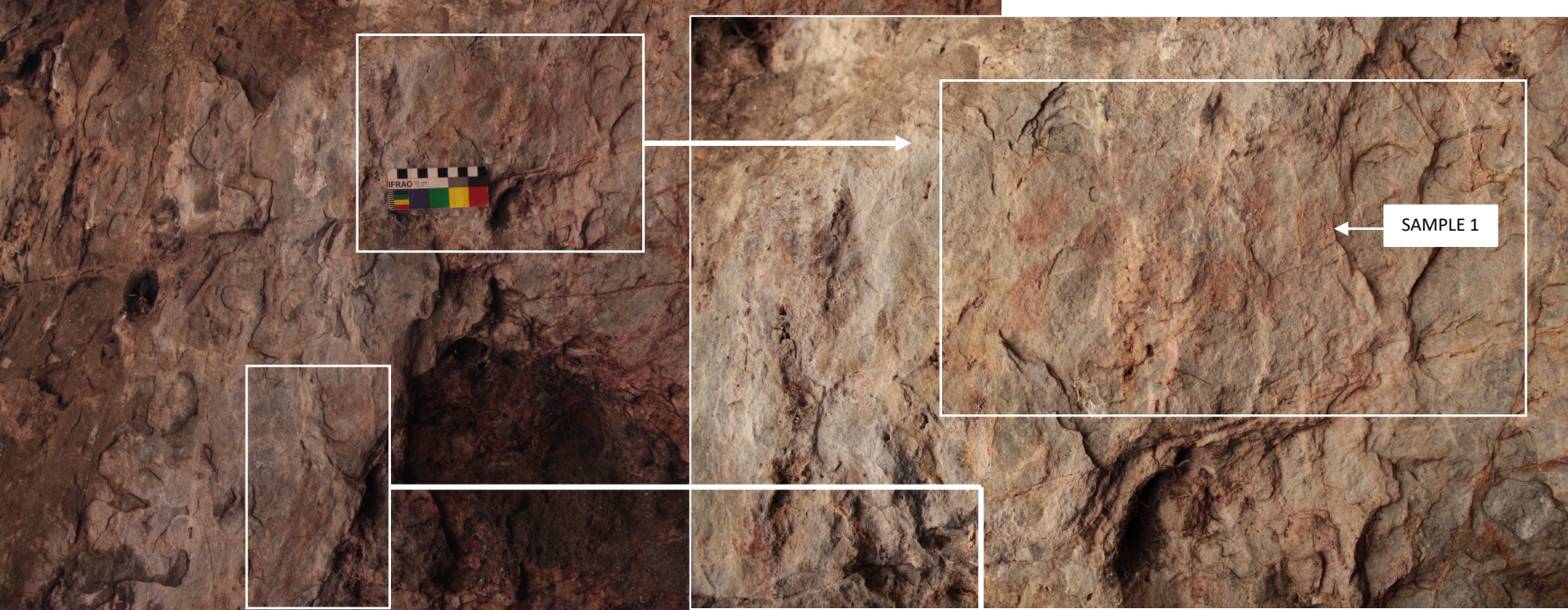
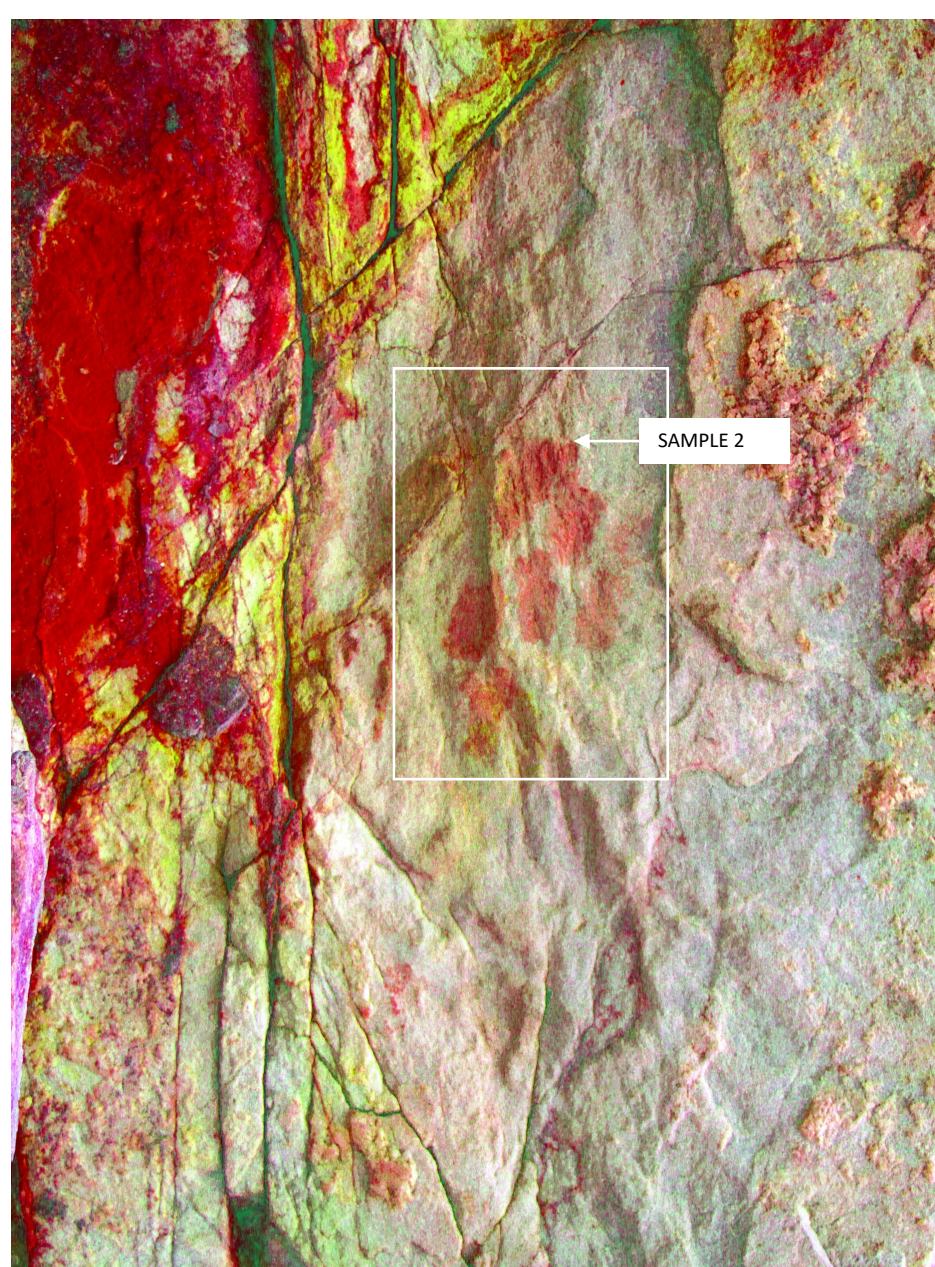
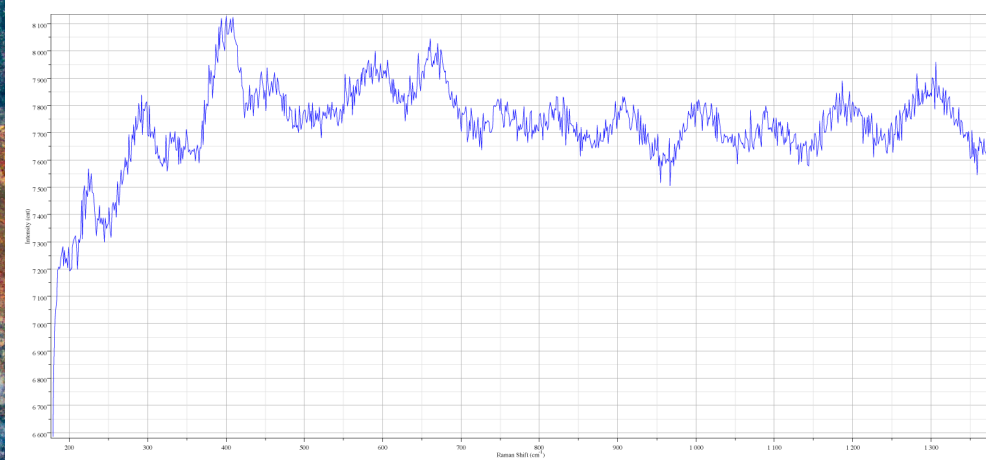
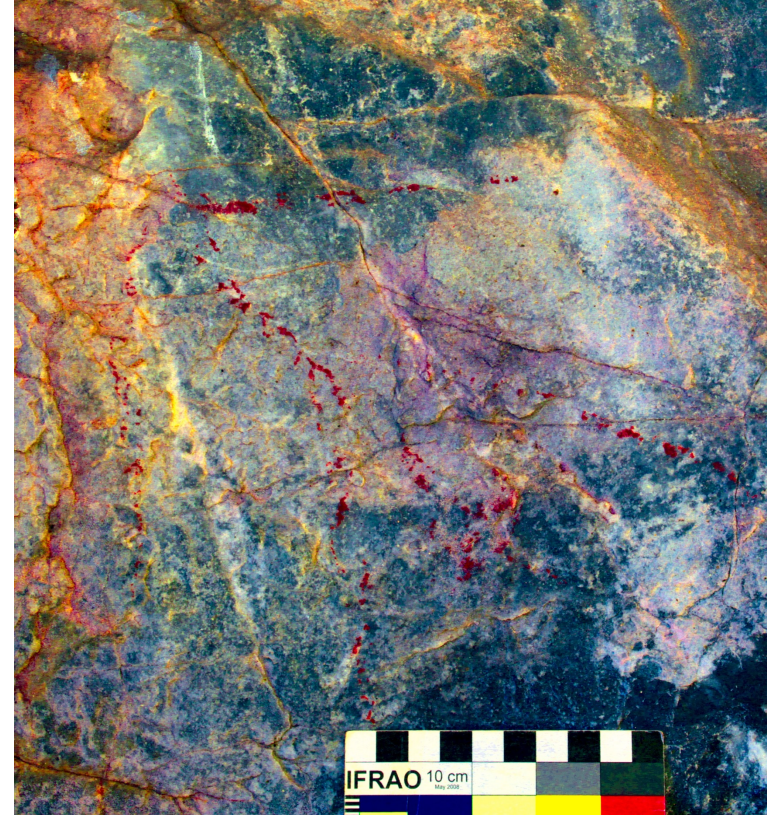
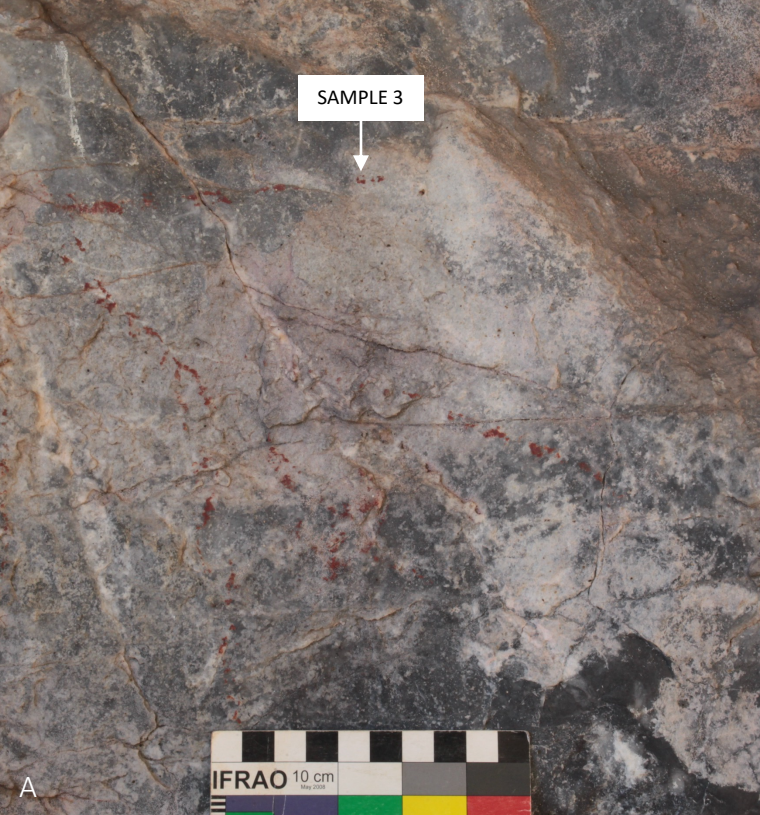


FIGURE 4: SAMPLE PUERTO_1 FIGURES AND SAMPLING LOCATION (A); MICRO-RAMAN (B); EDXRF (C) AND ATR-FTIR (D) SPECTRA.

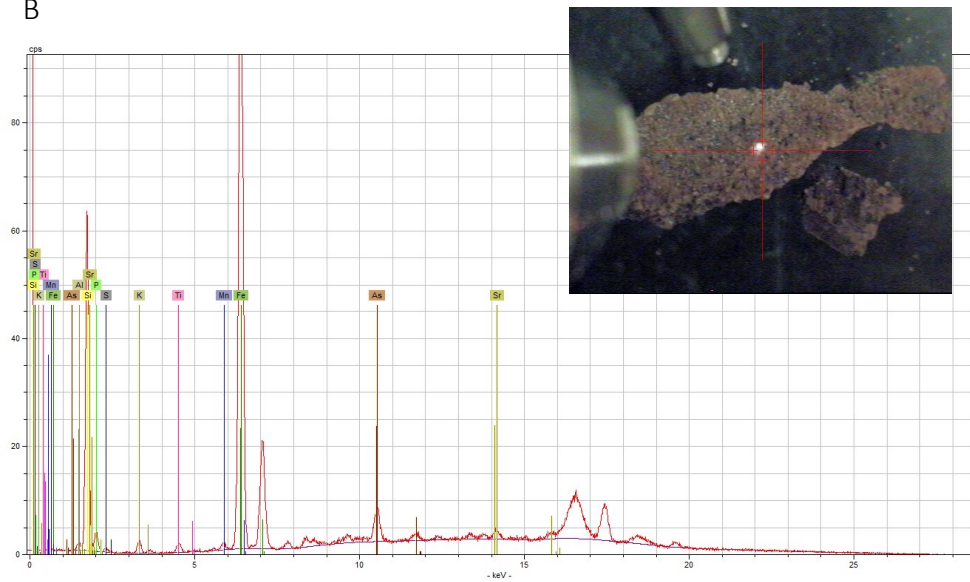


PANEL 2

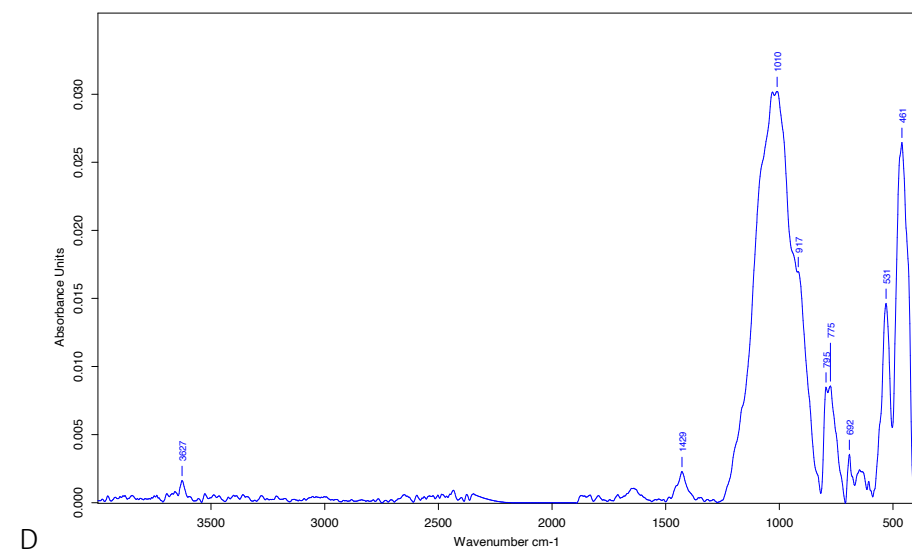
FIGURE 5: SAMPLE PUERTO_2 FIGURES AND SAMPLING LOCATION.



B

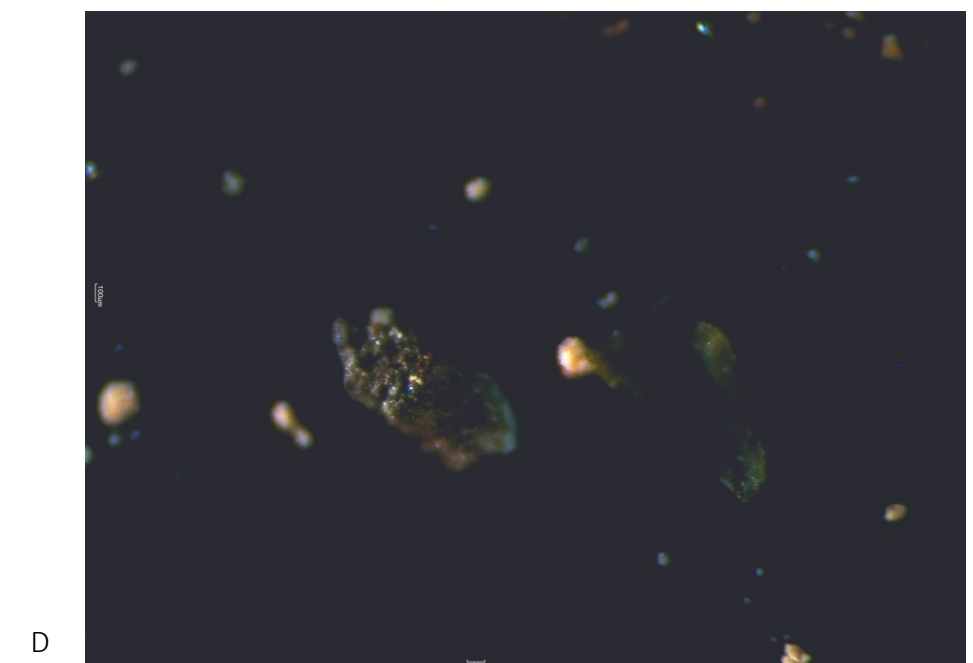
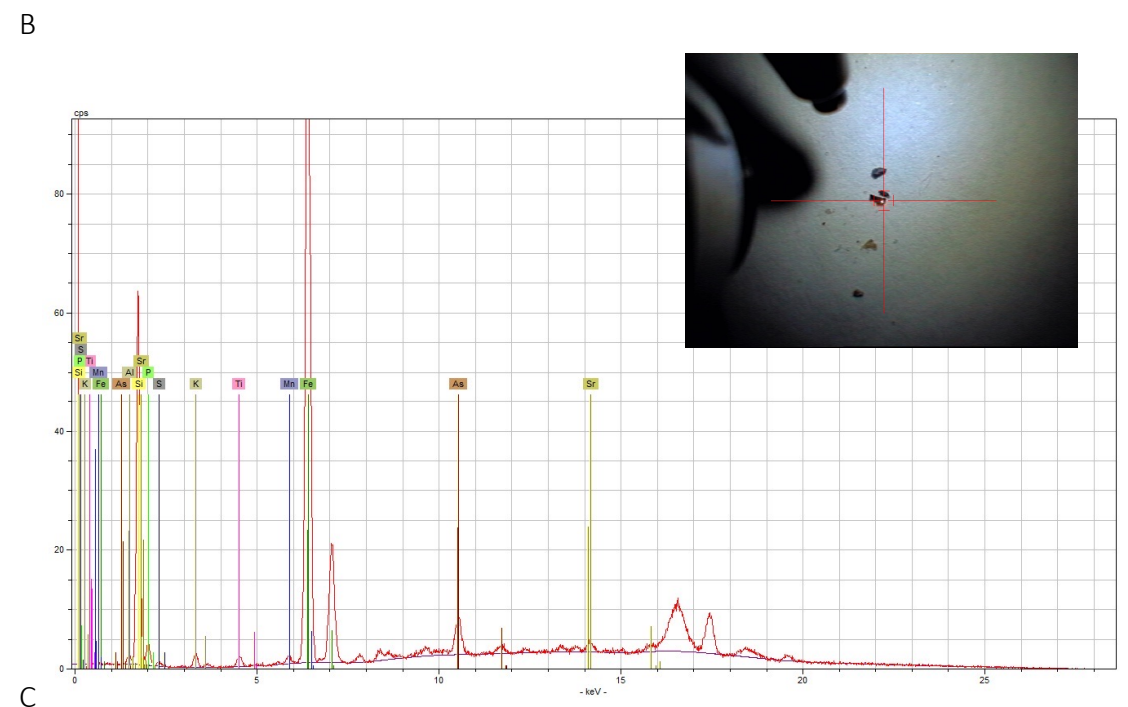
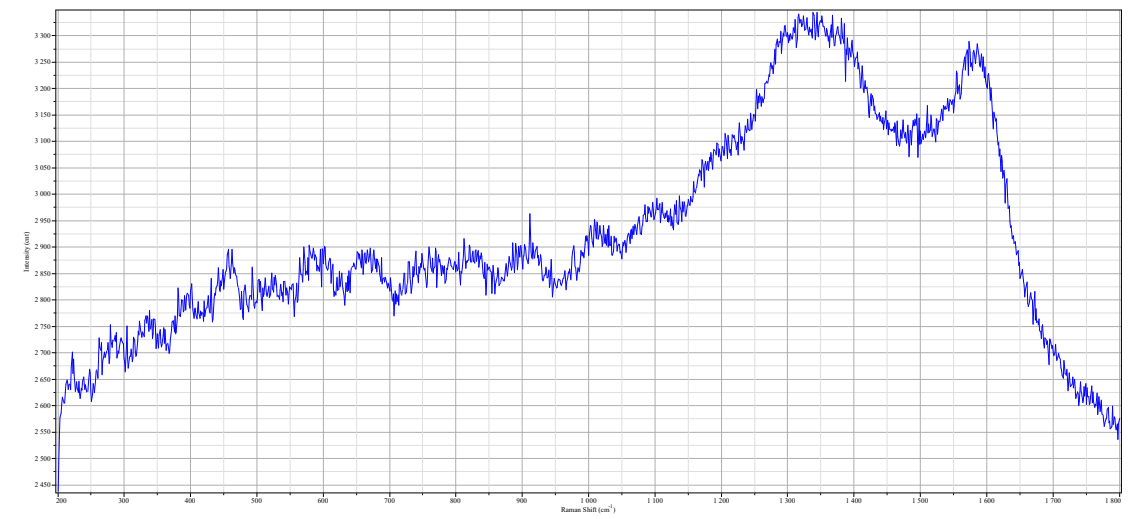
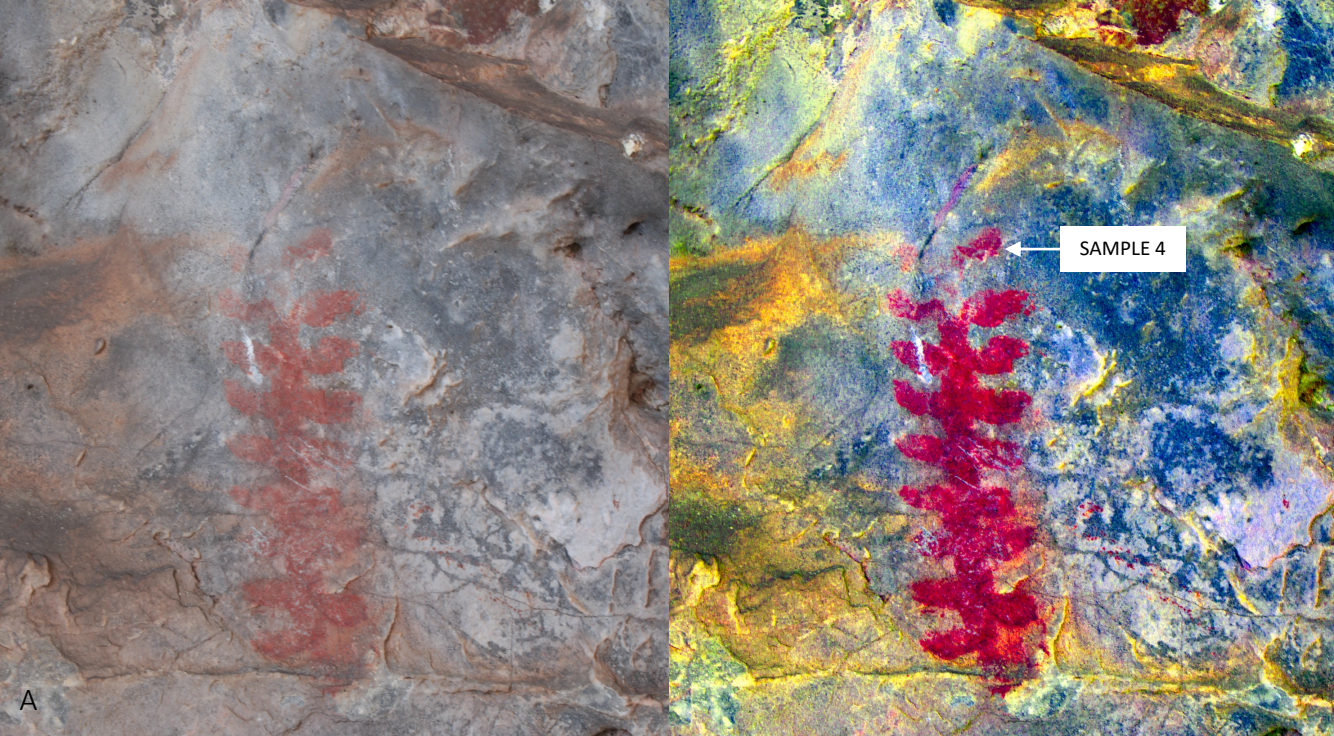


C



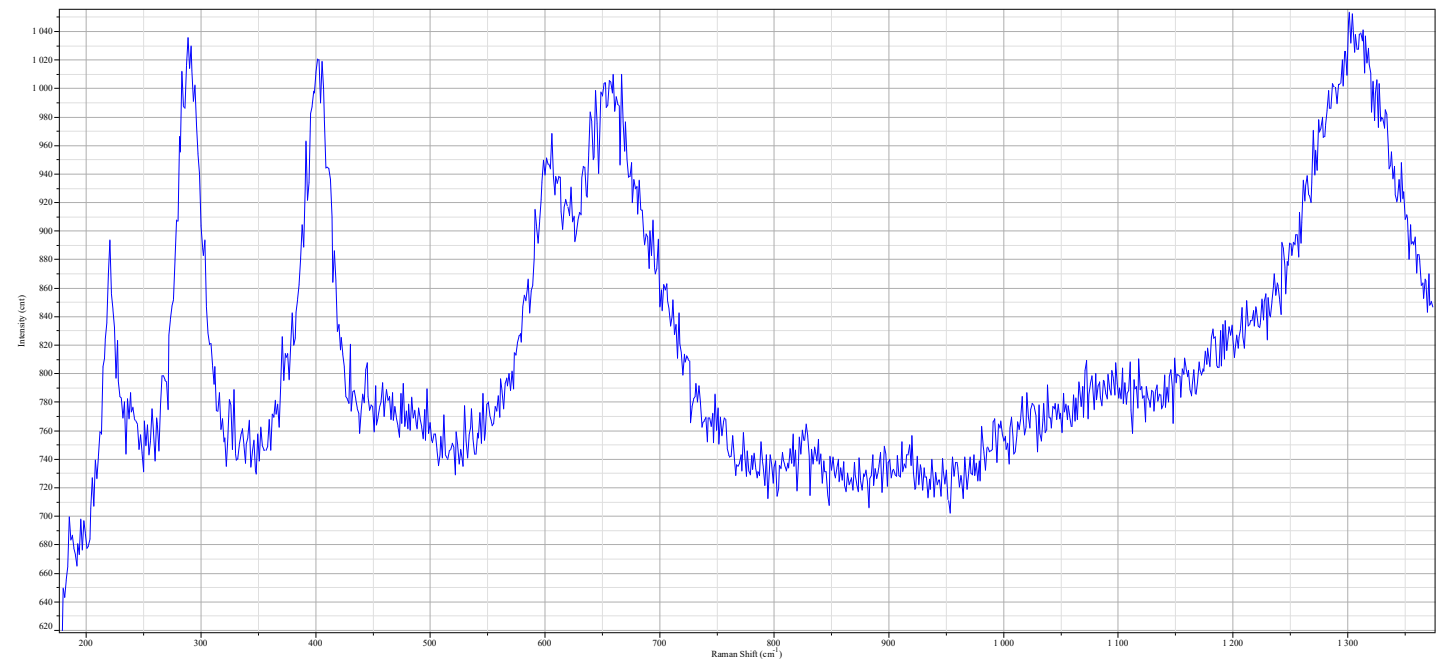
PANEL 3

FIGURE 6: SAMPLE PUERTO_3 FIGURES AND SAMPLING LOCATION (A); MICRO-RAMAN (B) EDXRF (C) AND ATR-FTIR (D) SPECTRA AND STEREO MICROSCOPE IMAGE (E).

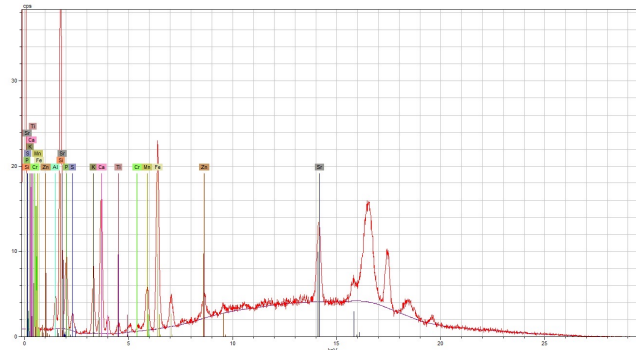


PANEL 4

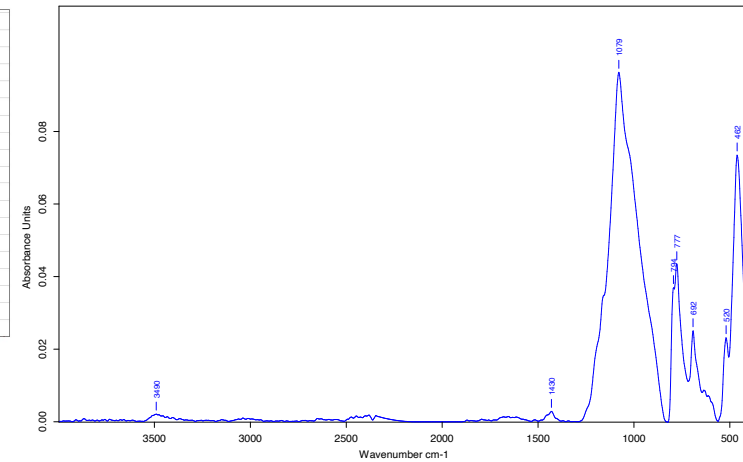
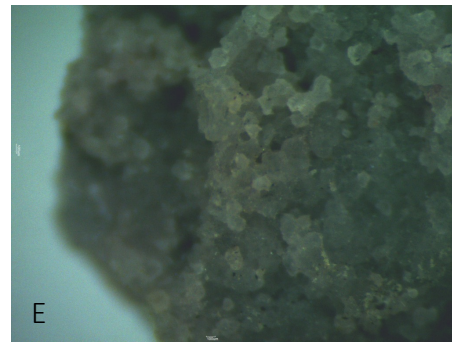
FIGURE 7: SAMPLE PUERTO_4 FIGURES AND SAMPLING LOCATION (A); MICRO-RAMAN (B) AND EDXRF (C) SPECTRA AND STEREO MICROSCOPE IMAGE (D).



B

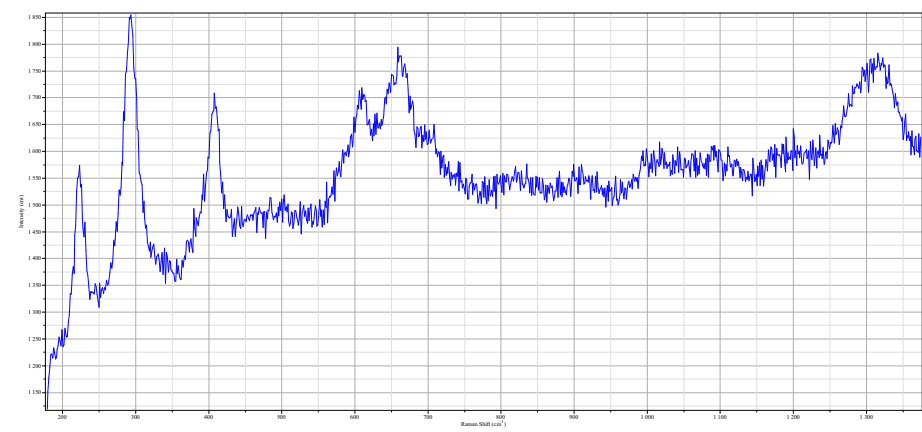
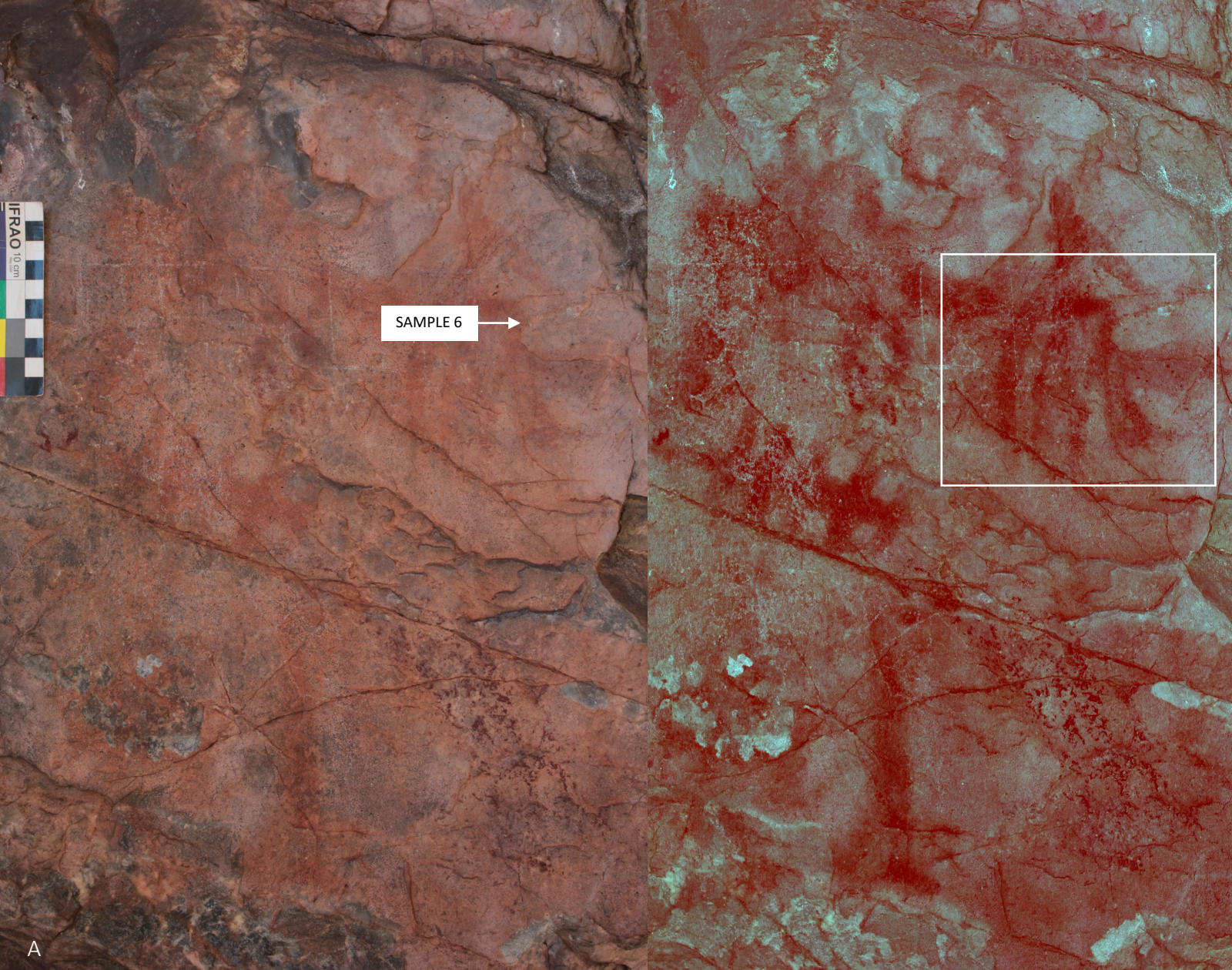


C

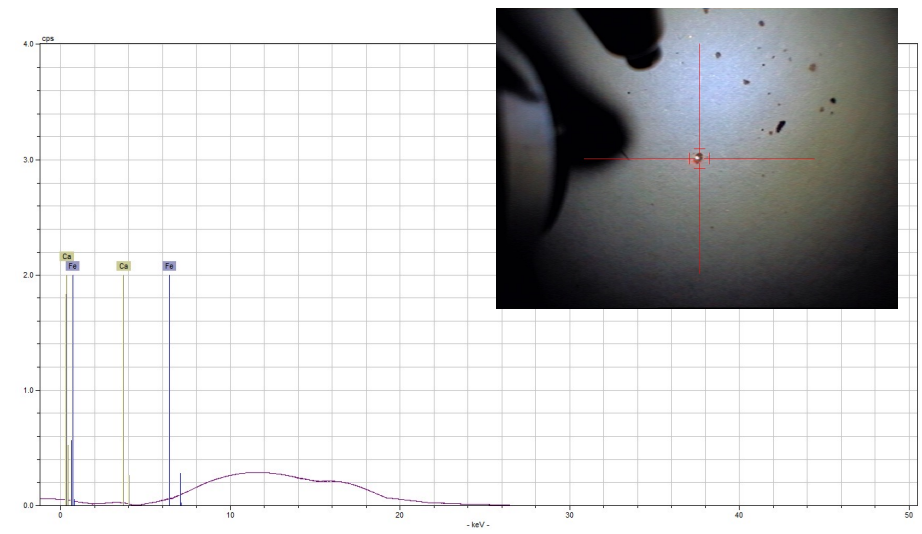


D

FIGURE 8: SAMPLE PUERTO_5 FIGURES AND SAMPLING LOCATION (A); MICRO-RAMAN (B), EDXRF (C) AND ATR-FTIR (D) SPECTRA AND STEREO MICROSCOPE IMAGE (E).

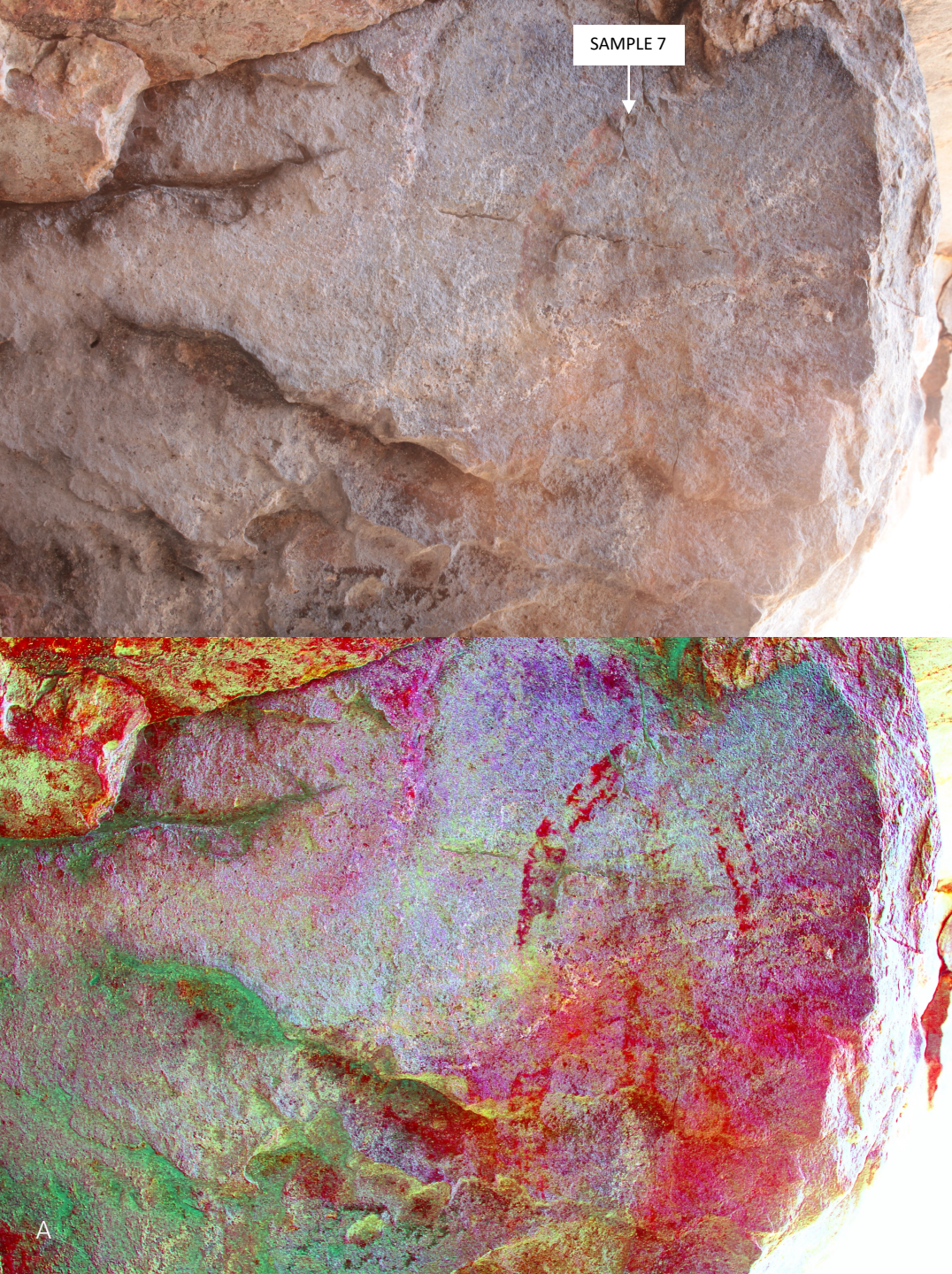


B



C

FIGURE 9: SAMPLE PUERTO_6 FIGURES AND SAMPLING LOCATION (A); MICRO-RAMAN (B) AND EDXRF (C) SPECTRA.

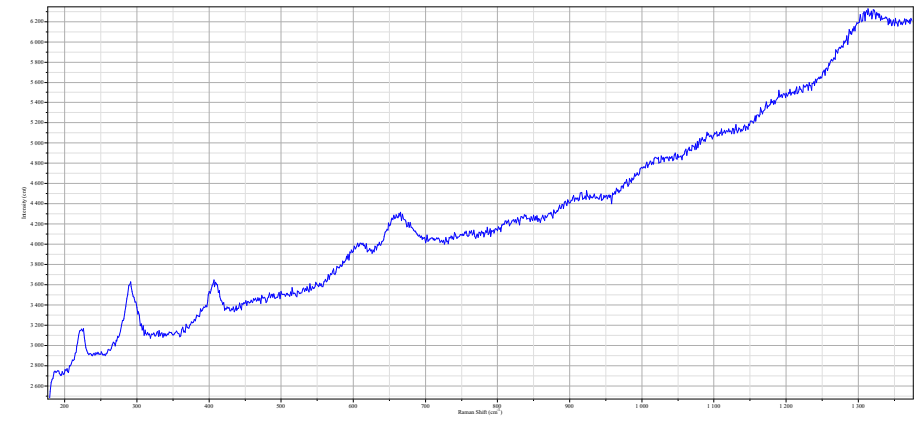


A

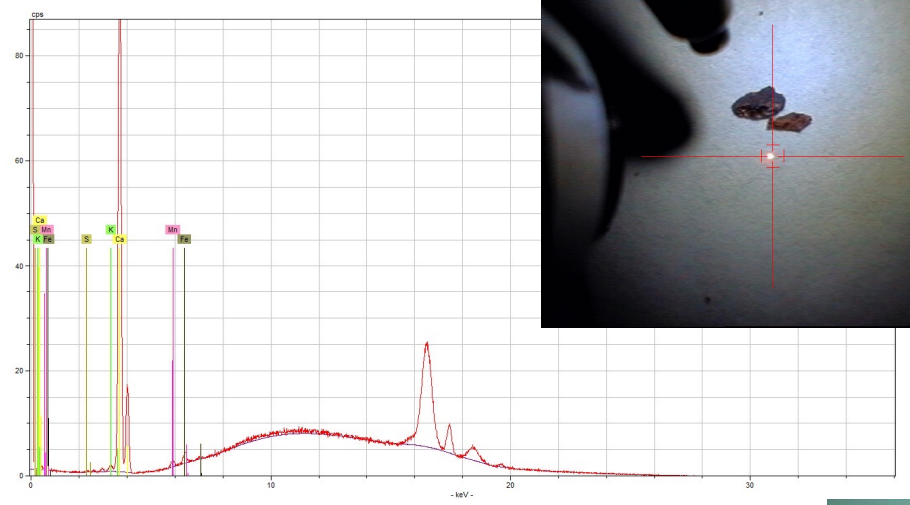
SAMPLE 7

PANEL 7

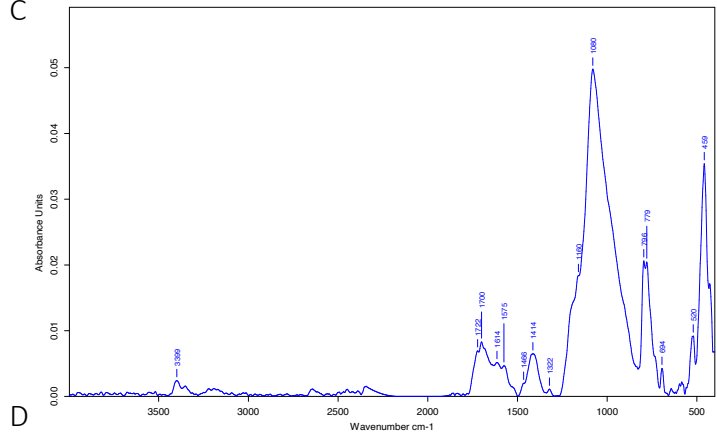
FIGURE 10: SAMPLE PUERTO_7 FIGURES AND SAMPLING LOCATION (A); MICRO-RAMAN (B), EDXRF (C) AND ATR-FTIR (D) SPECTRA AND STEREO MICROSCOPE IMAGE (E).



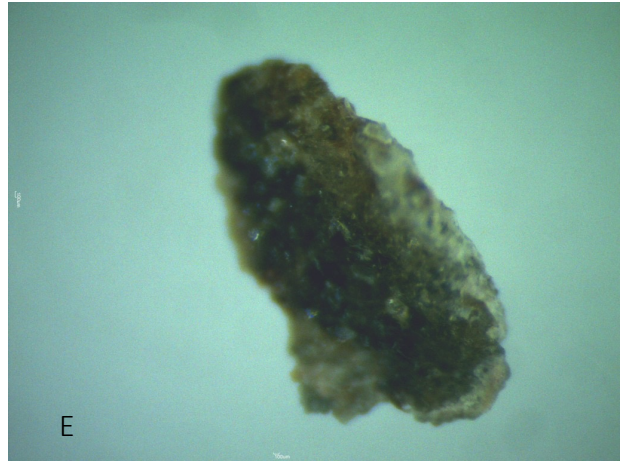
B



C



D



E

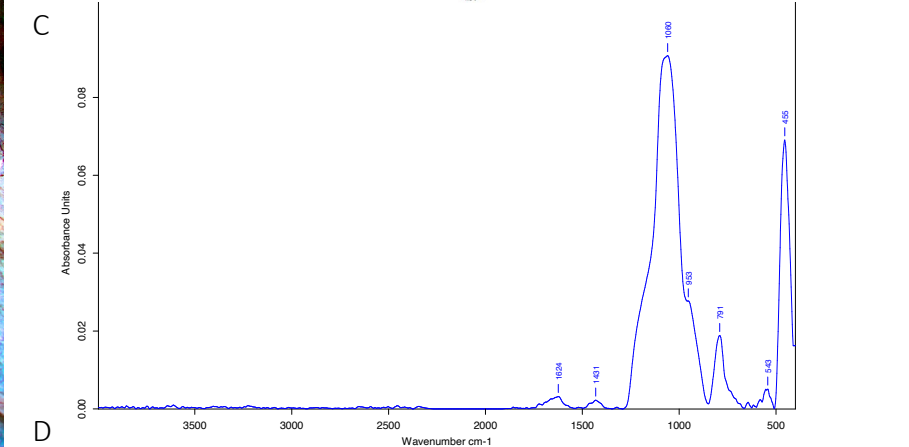
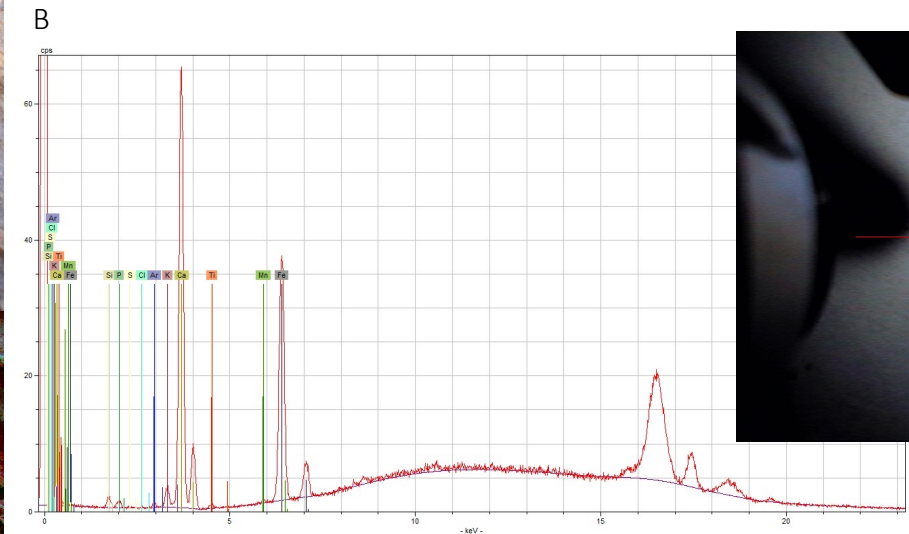
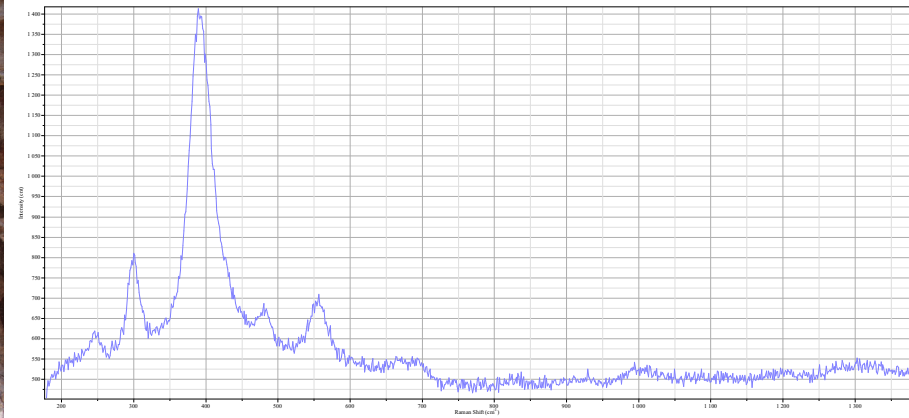
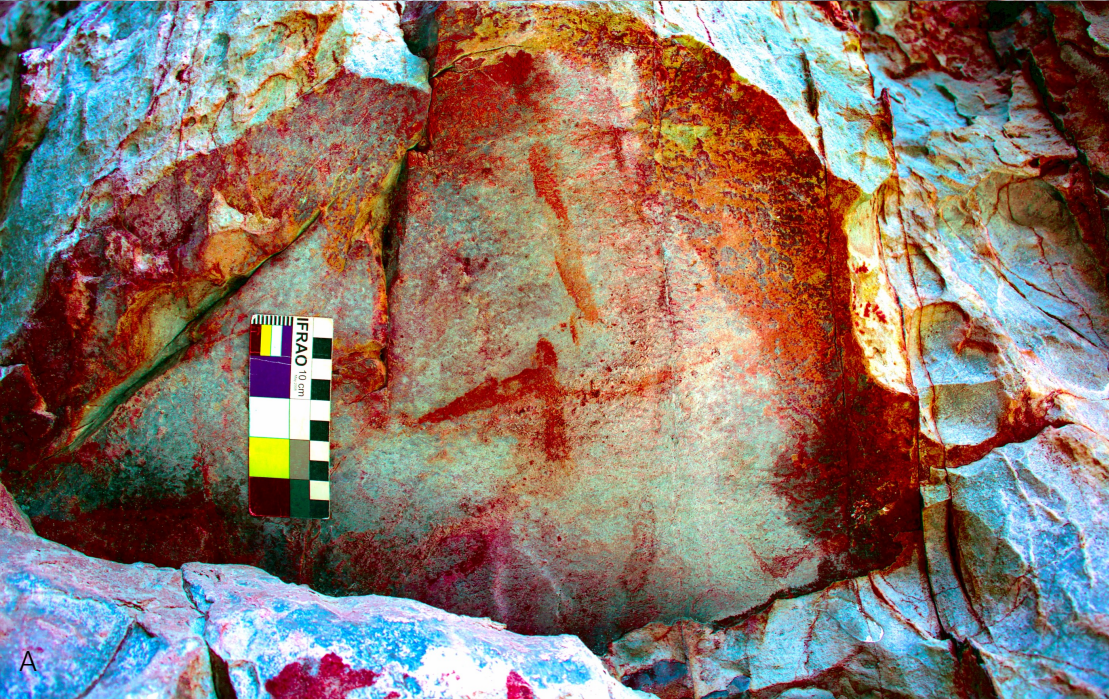
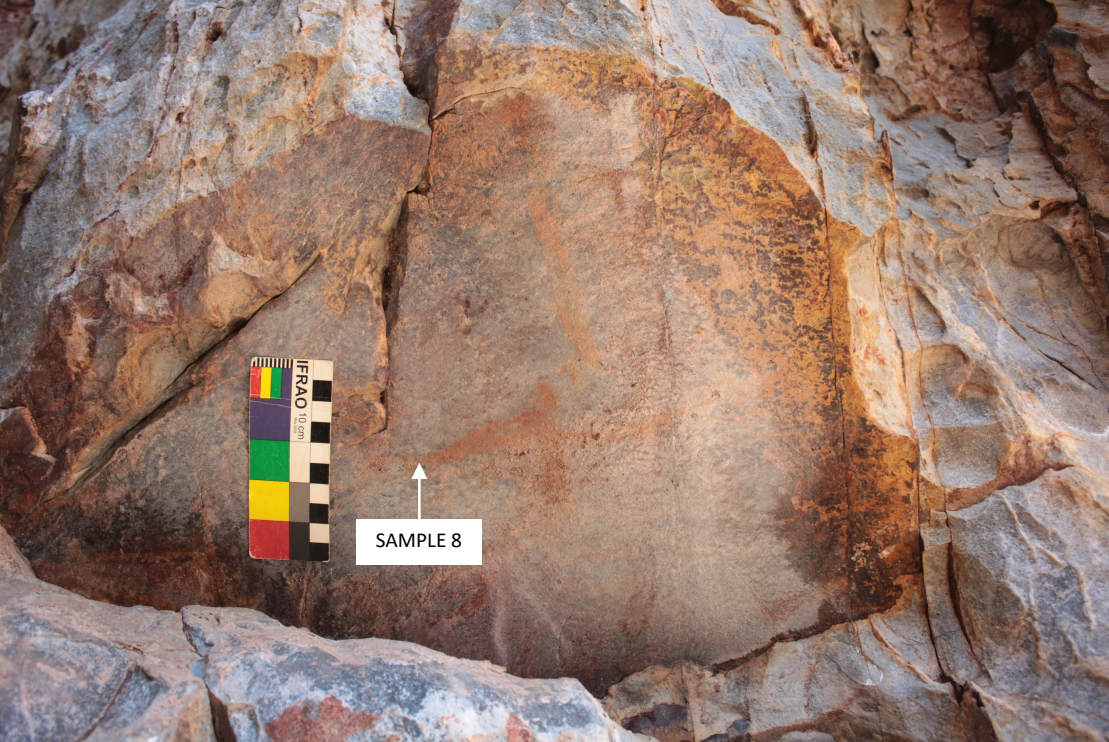


FIGURE 11: SAMPLE PUERTO_8 FIGURES AND SAMPLING LOCATION (A); MICRO-RAMAN (B) AND EDXRF (C), AND ATR-FTIR (D) SPECTRA.

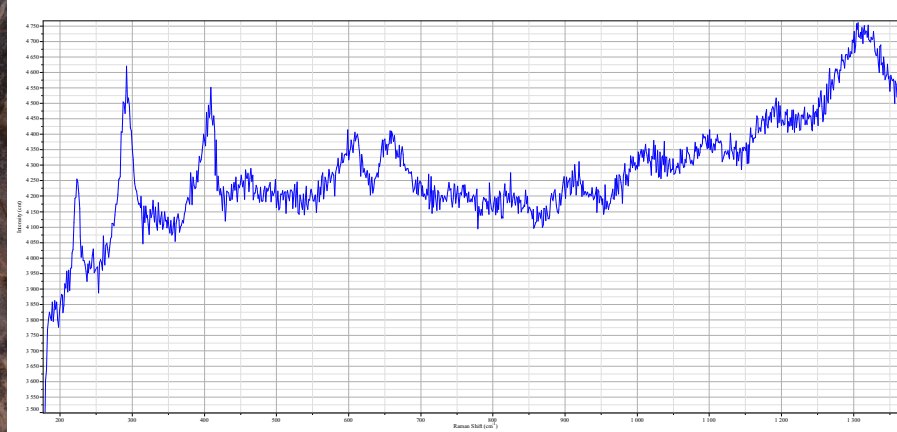
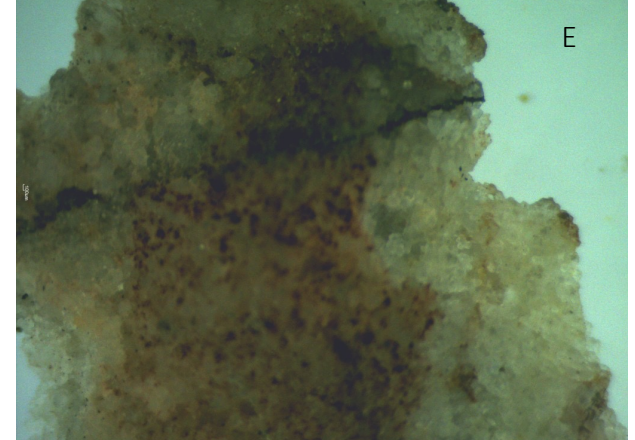
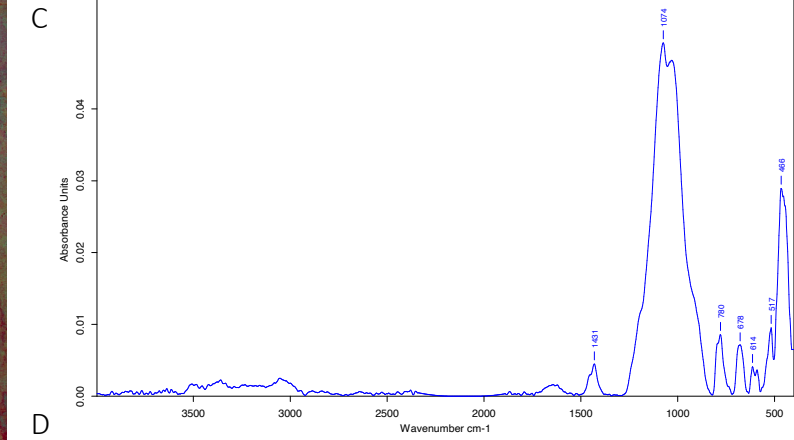
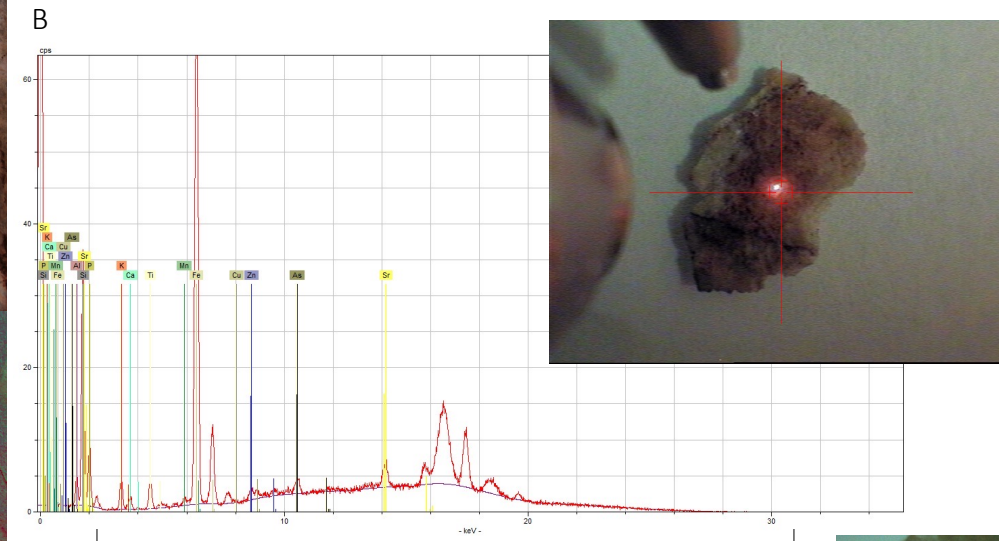
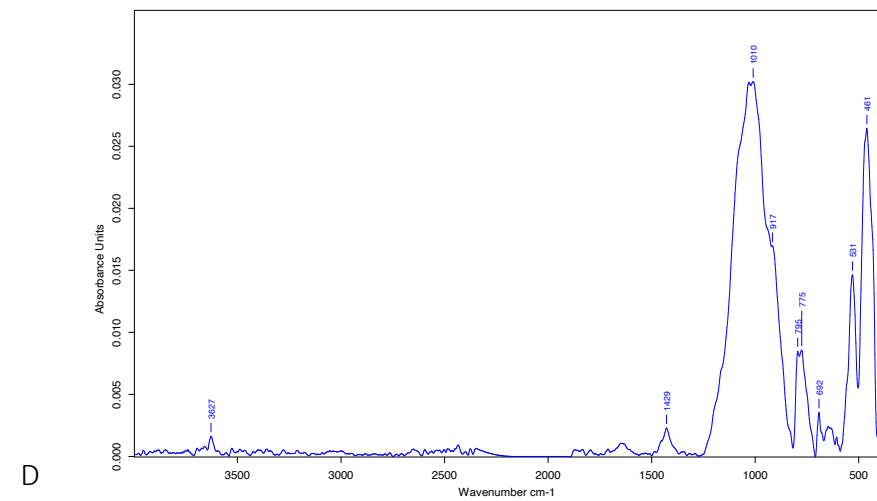
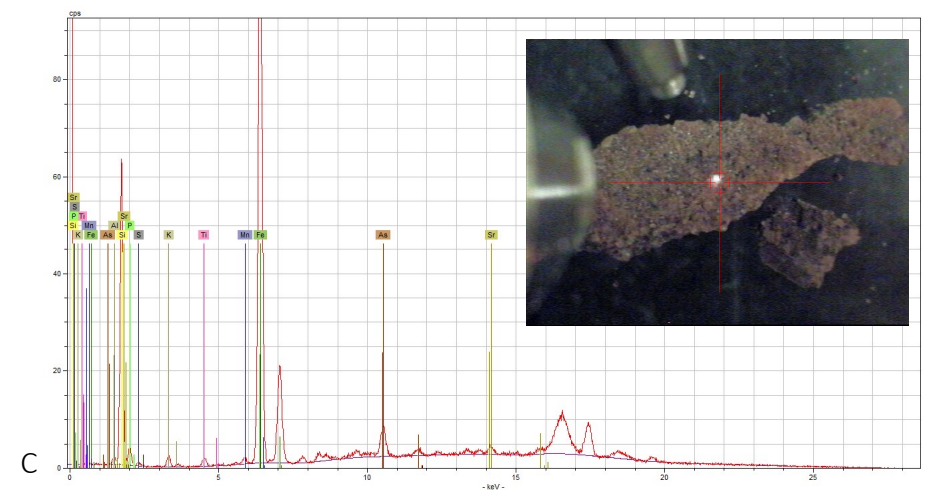
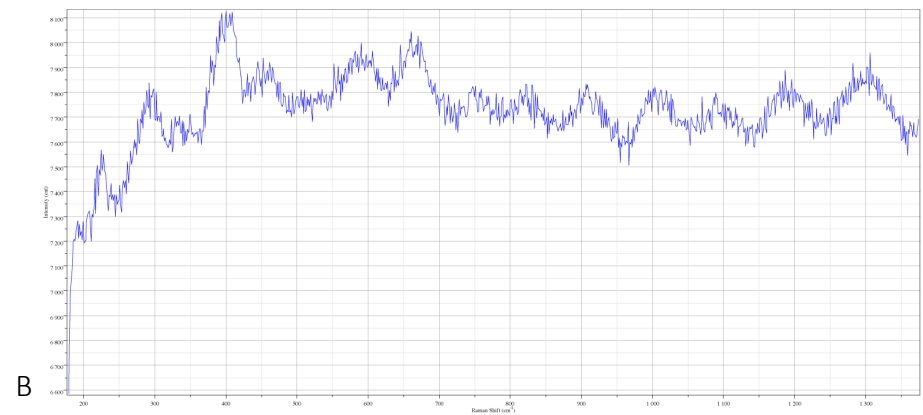
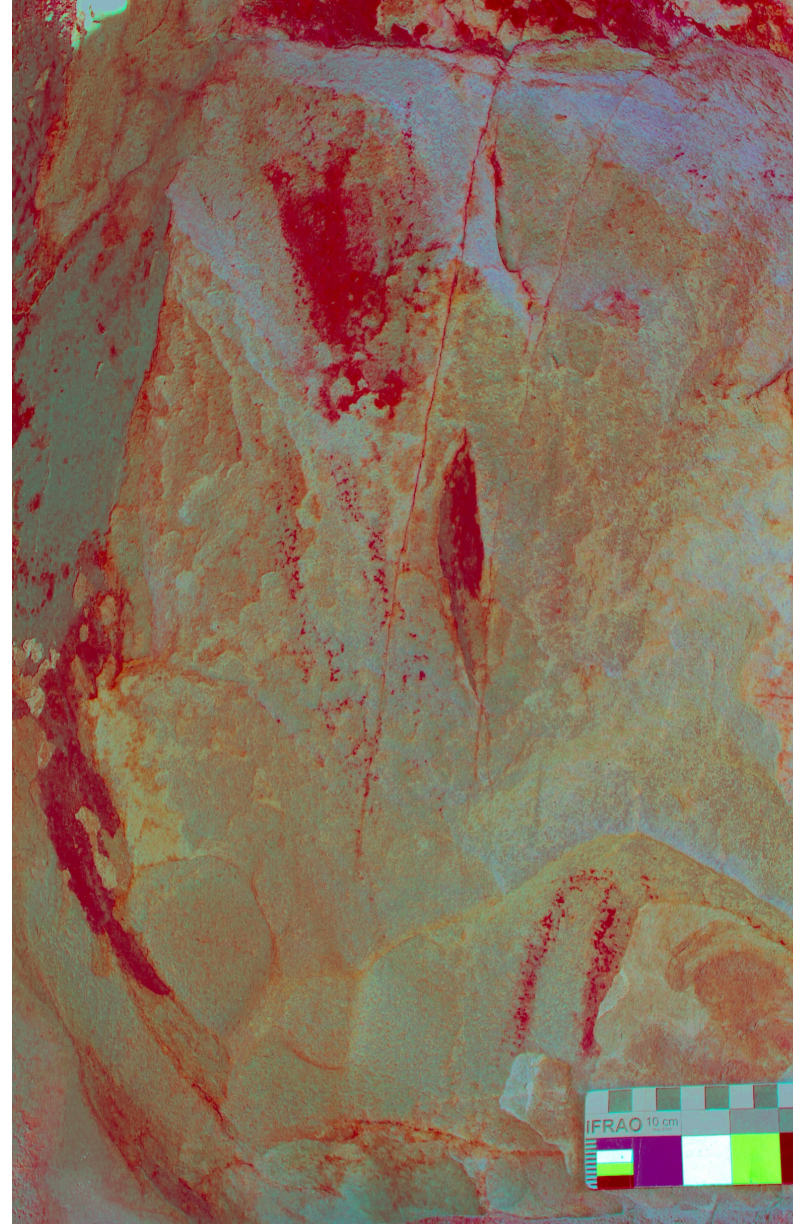


FIGURE 12: SAMPLE PUERTO_9 FIGURES AND SAMPLING LOCATION (A); MICRO-RAMAN (B) EDXRF (C) AND ATR-FTIR (D) SPECTRA AND STEREO MICROSCOPE IMAGE (E).



A

E



PANEL 10

FIGURE 13: SAMPLE PUERTO_10 FIGURES AND SAMPLING LOCATION (A); MICRO-RAMAN (B) AND EDXRF (C) AND ATR-FTIR (D) SPECTRA.

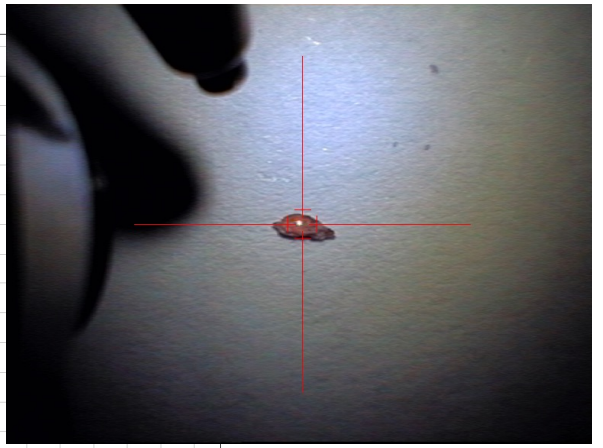
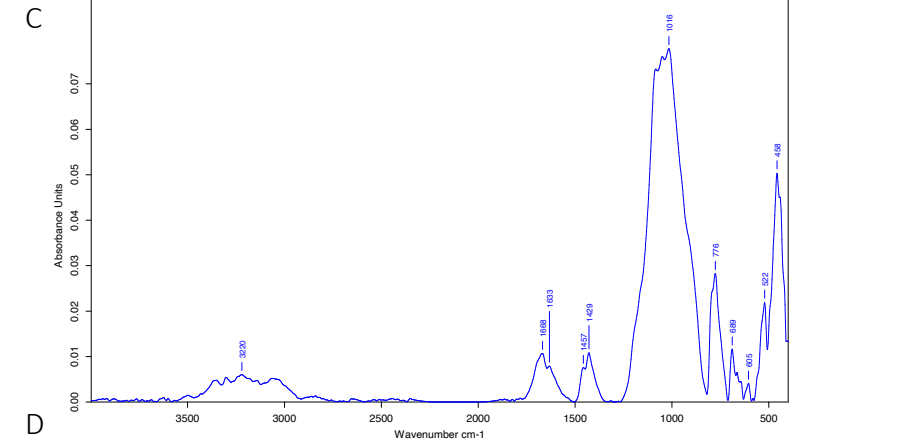
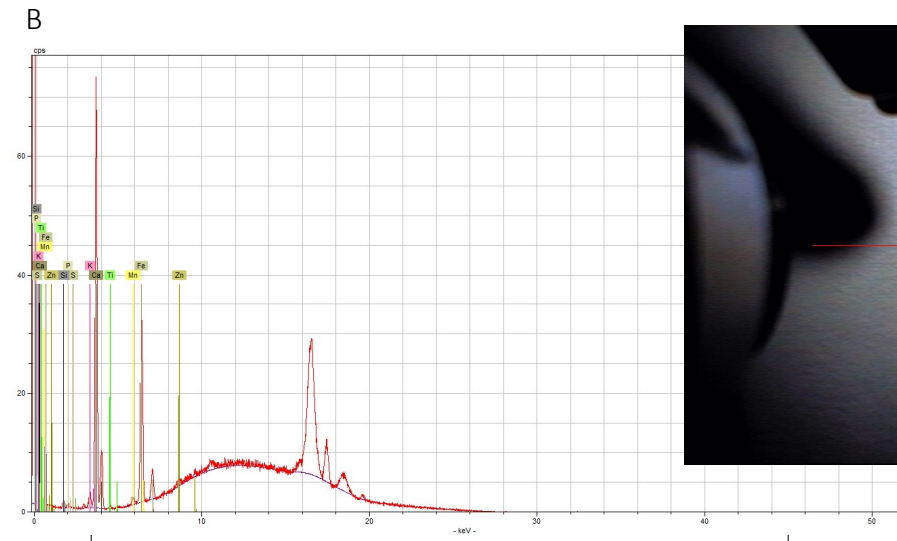
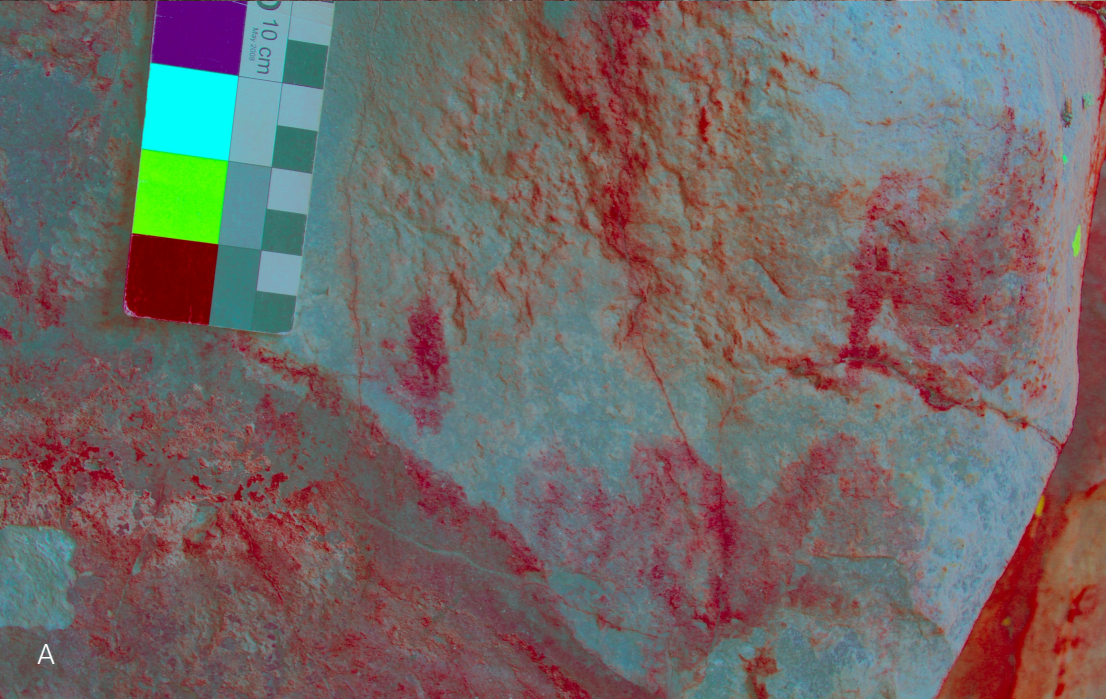
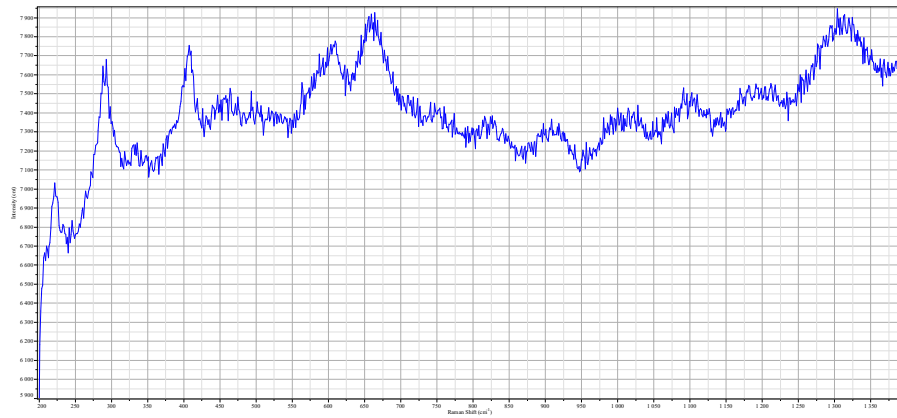
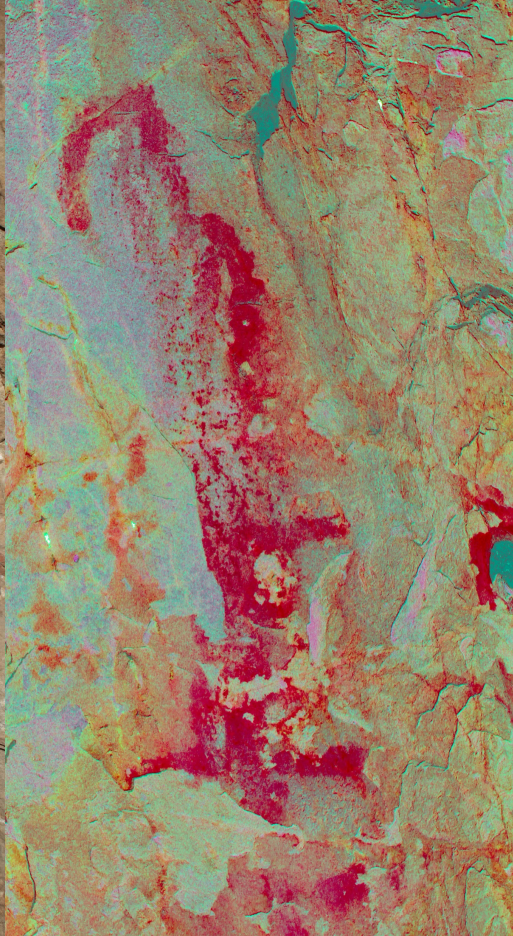
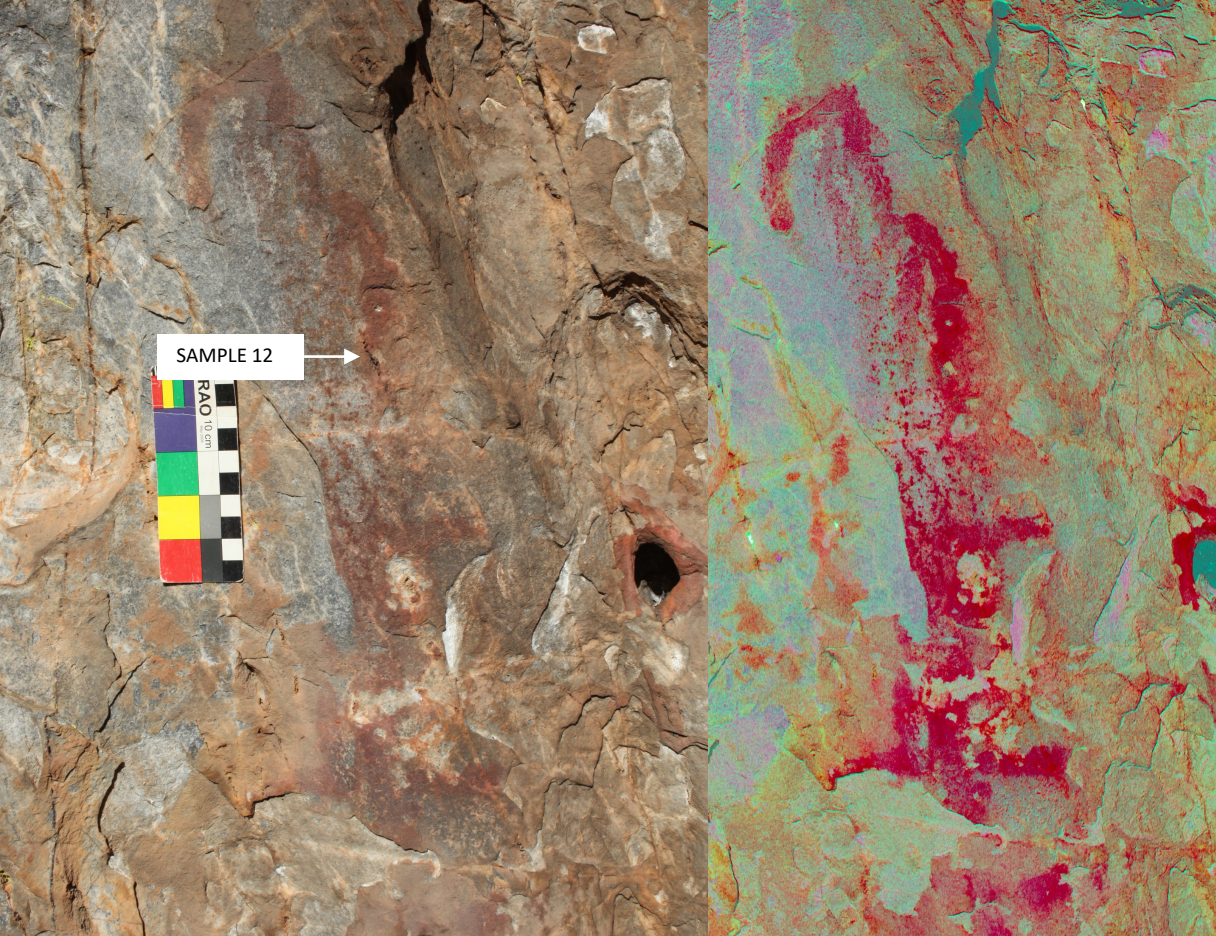


FIGURE 14: SAMPLE PUERTO_11 FIGURES AND SAMPLING LOCATION (A); MICRO-RAMAN (B) AND EDXRF (C) AND ATR-FTIR (D) SPECTRA.

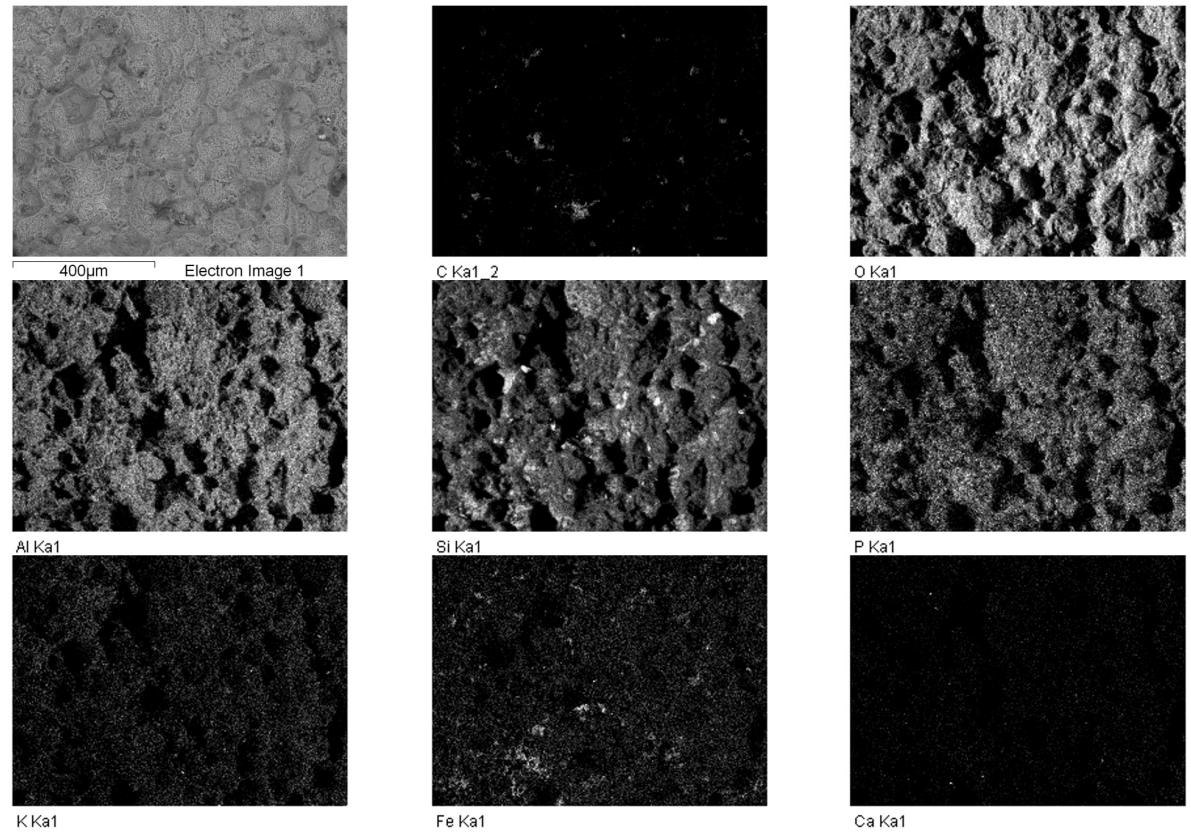
PANEL 11

A

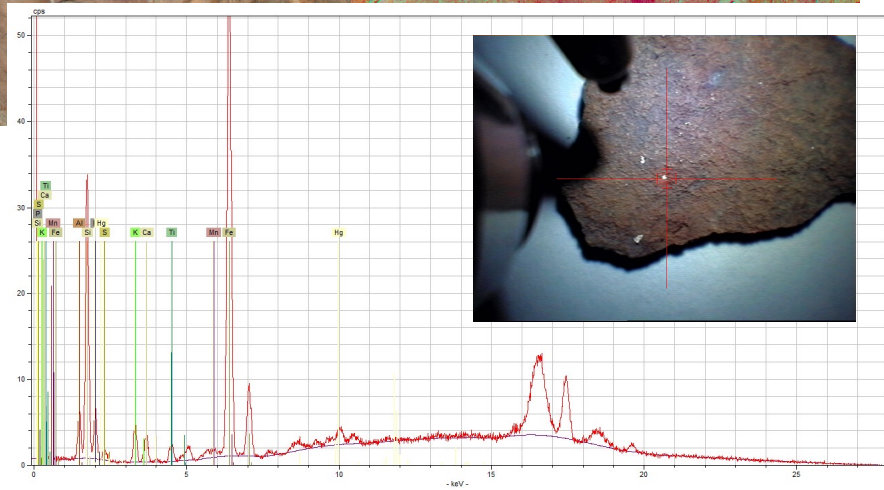
D



B



D



C

PANEL 12

FIGURE 15: SAMPLE PUERTO_12 FIGURES AND SAMPLING LOCATION (A); MICRO-RAMAN (B) AND EDXRF (C) SPECTRA AND SEM-EDS ELEMENTAL MAPPING (D).

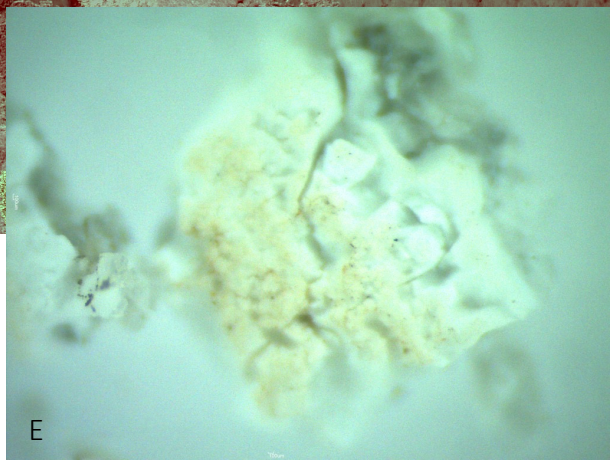
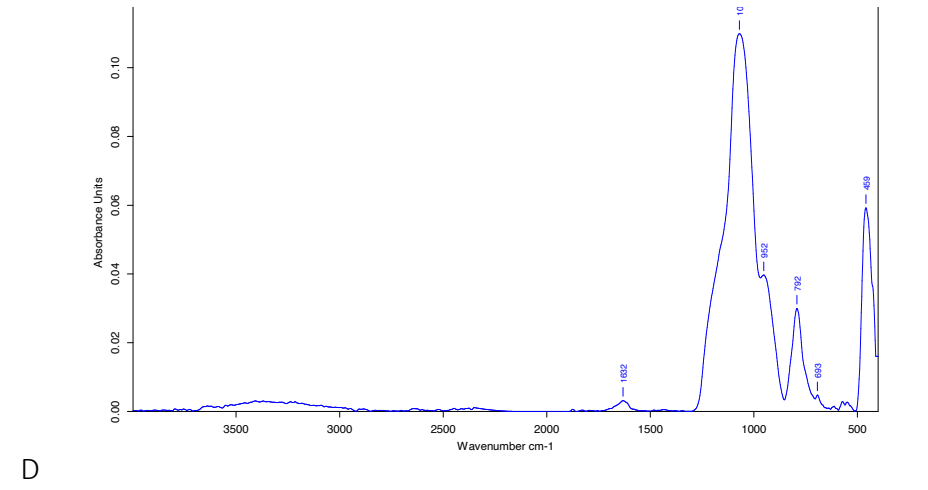
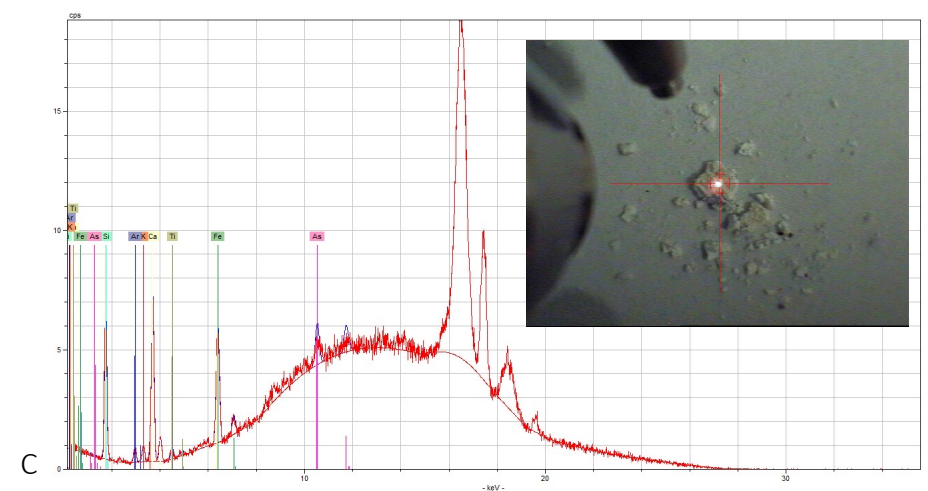
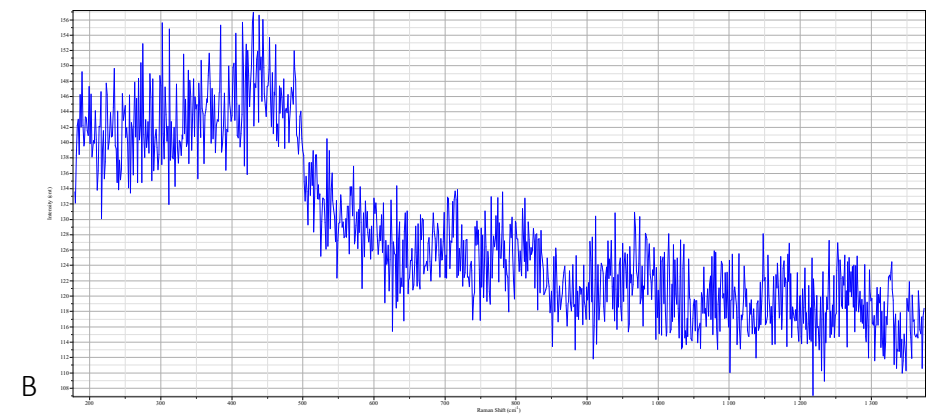
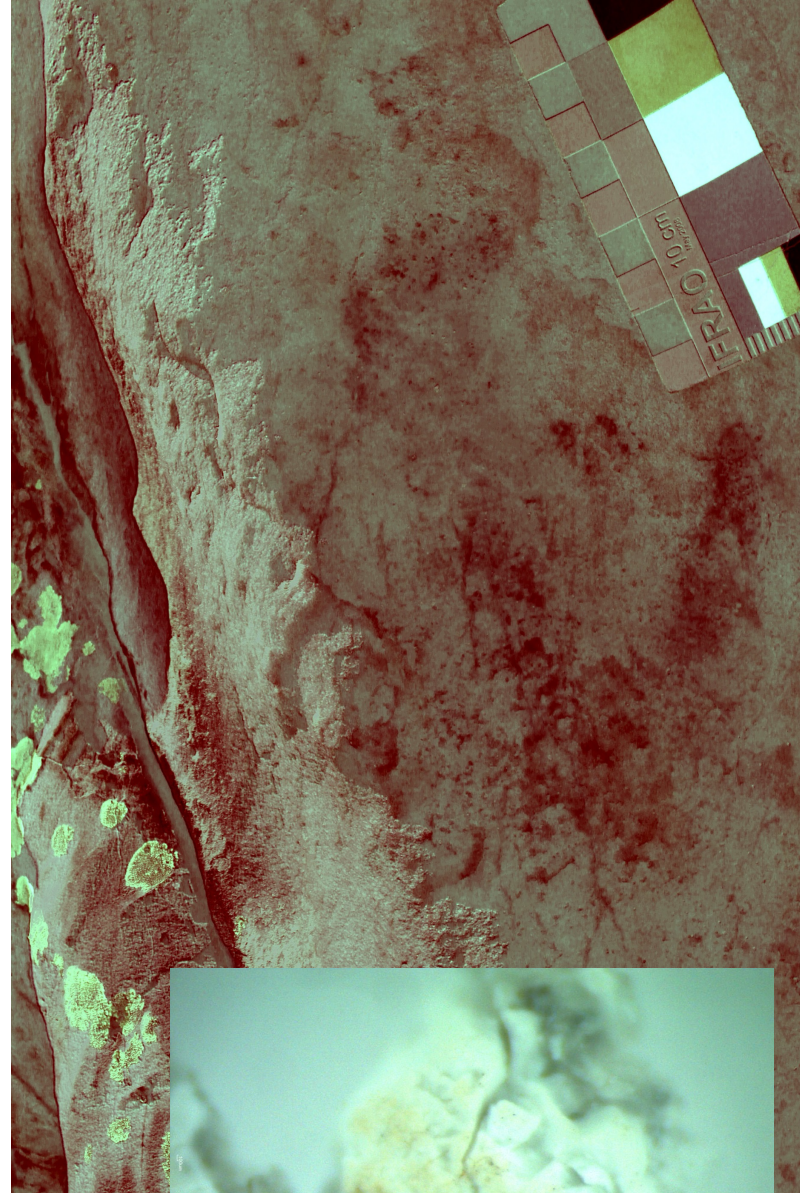


FIGURE 16: SAMPLE PUERTO_13 FIGURES AND SAMPLING LOCATION (A); MICRO-RAMAN (B), EDXRF (C) AND ATR-FTIR (D) SPECTRA AND STEREO MICROSCOPE IMAGE (E).

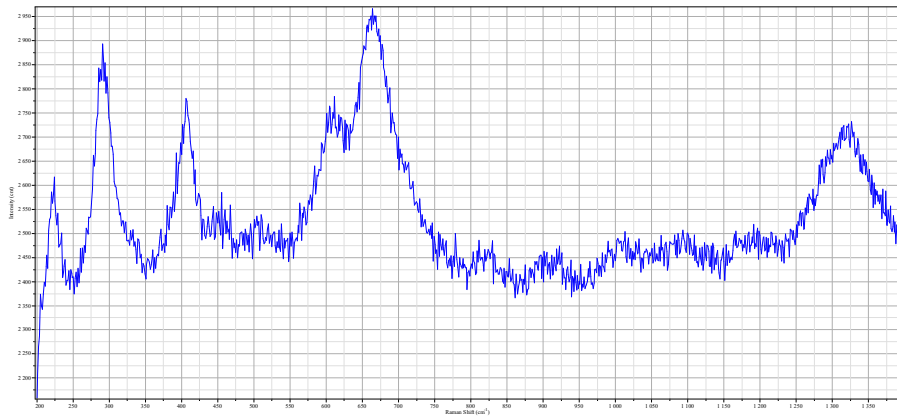
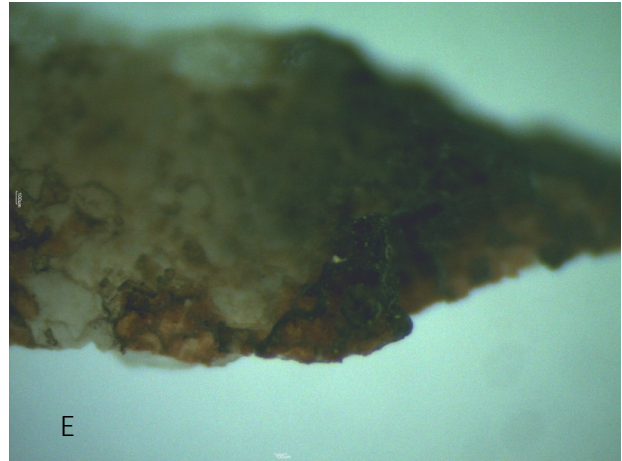
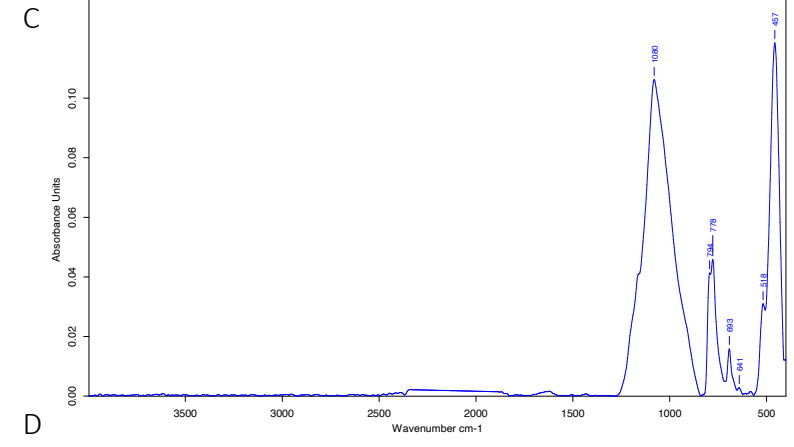
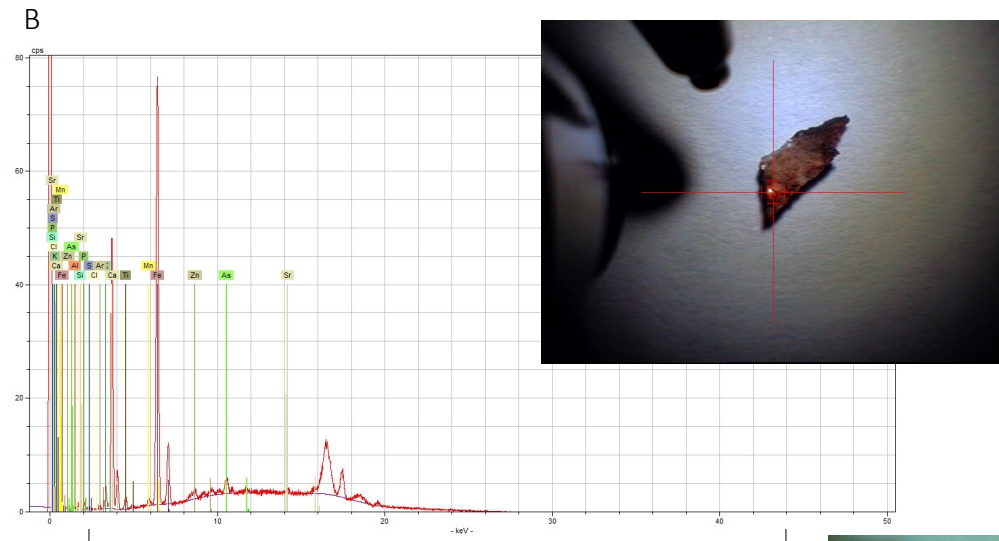
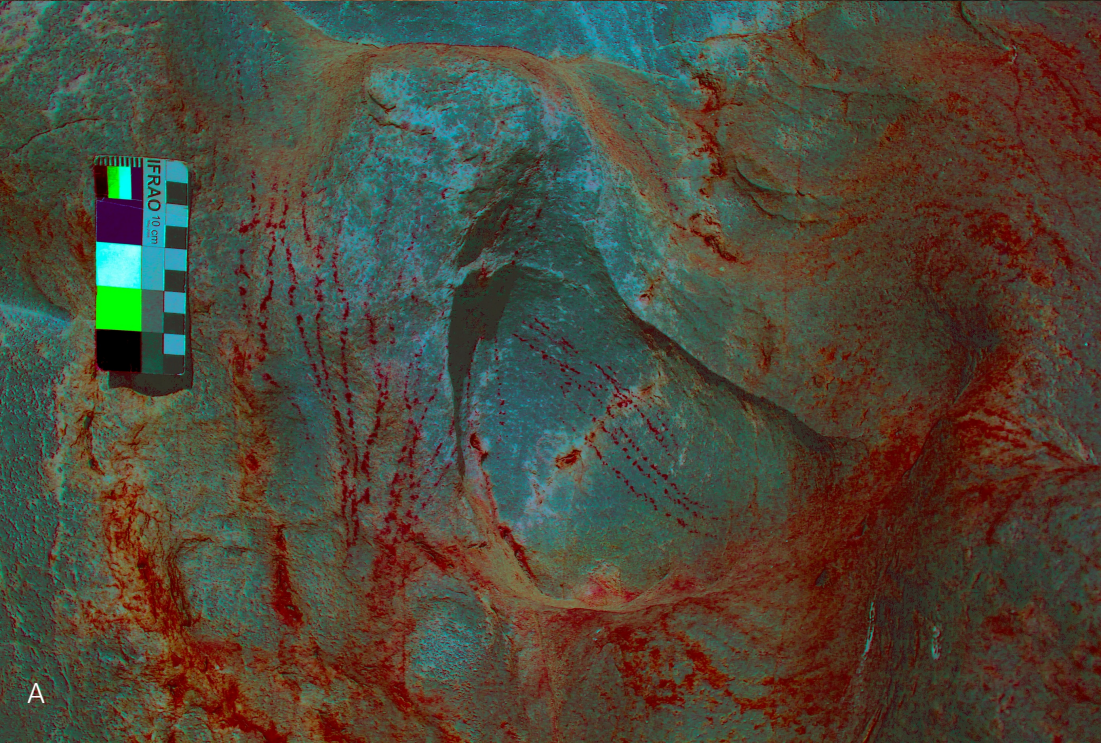
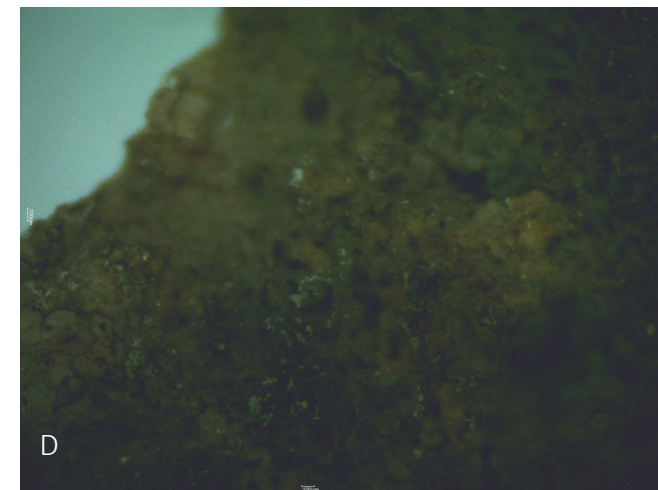
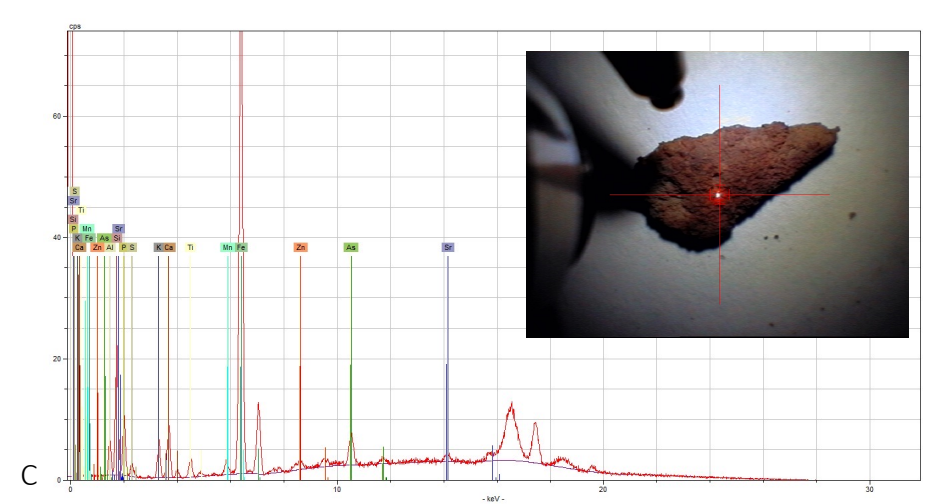
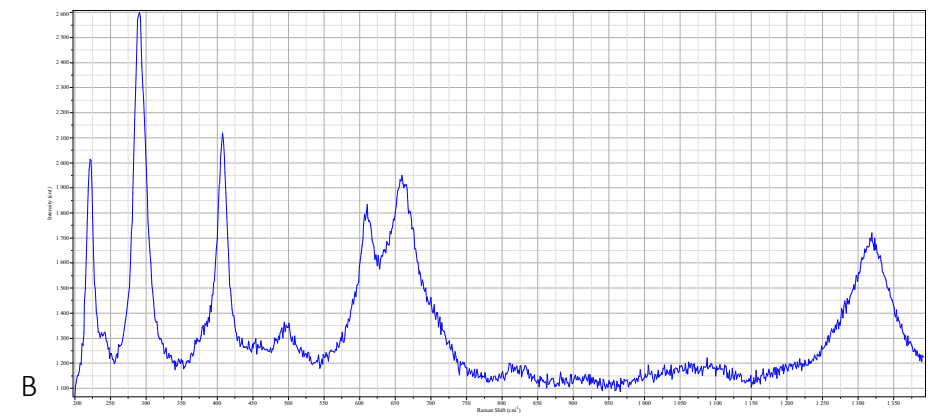
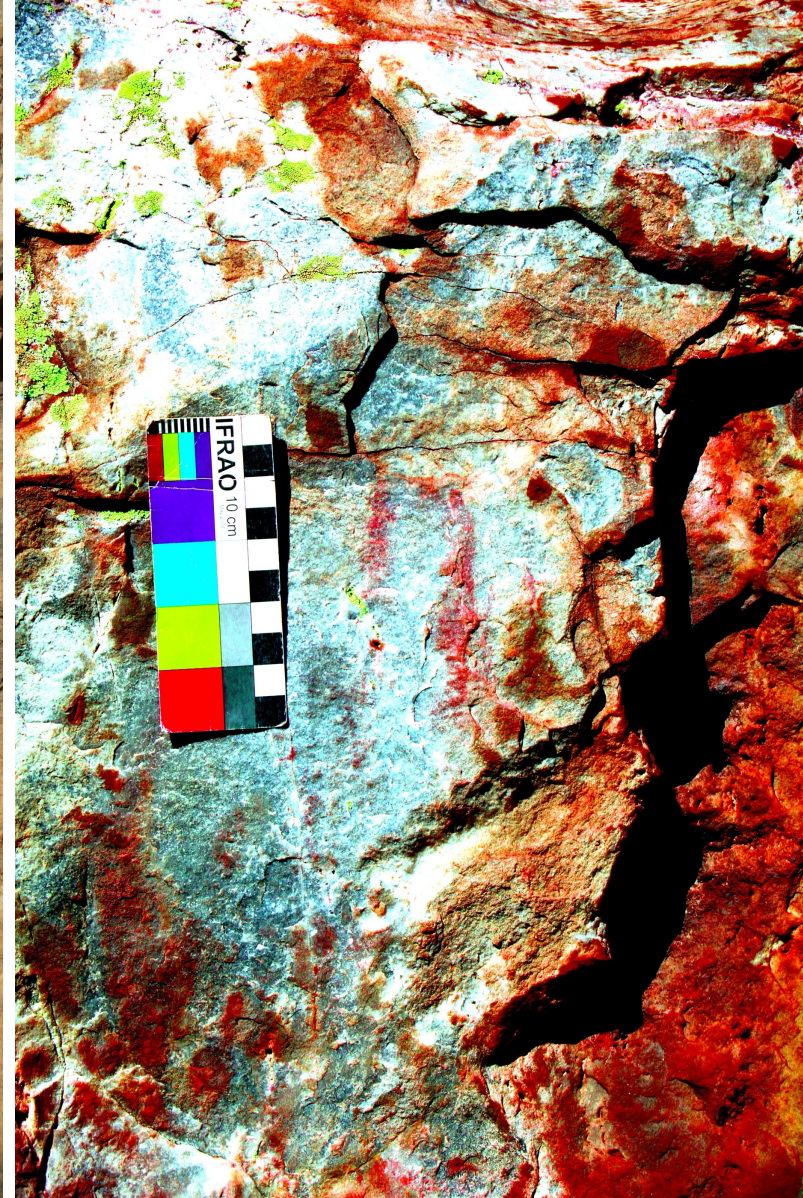
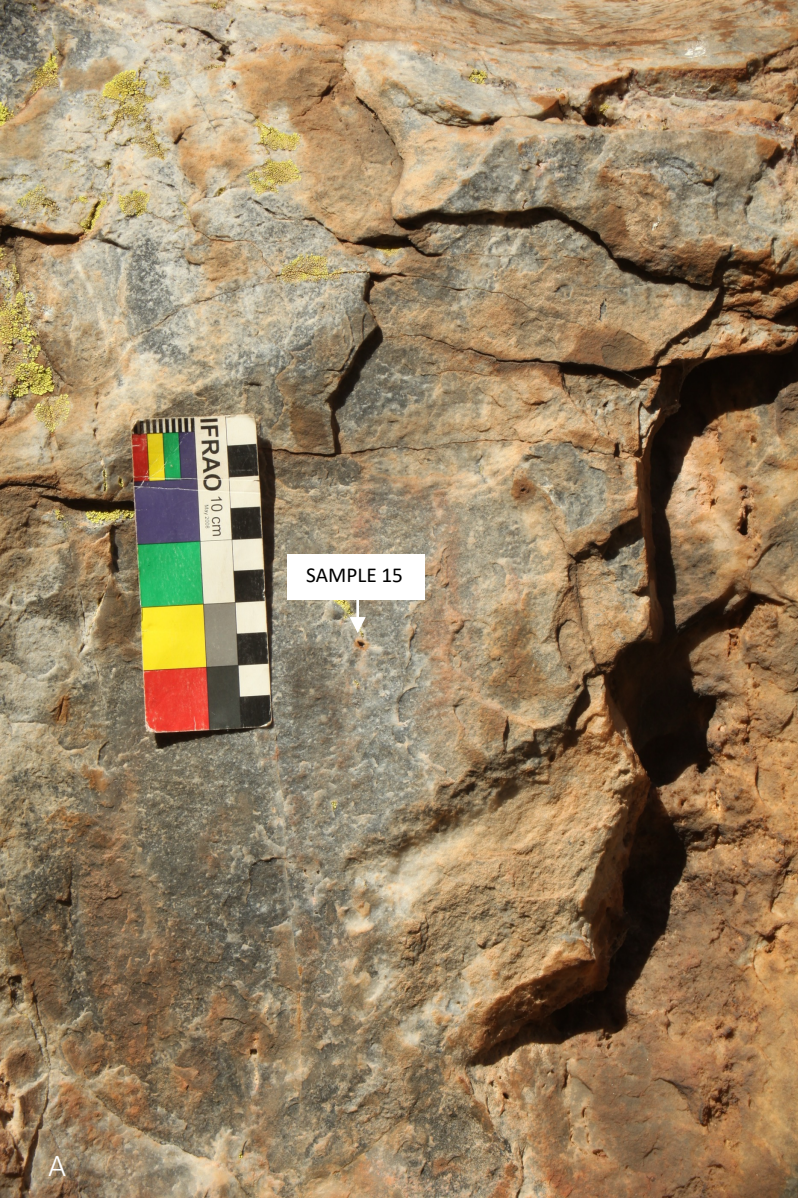


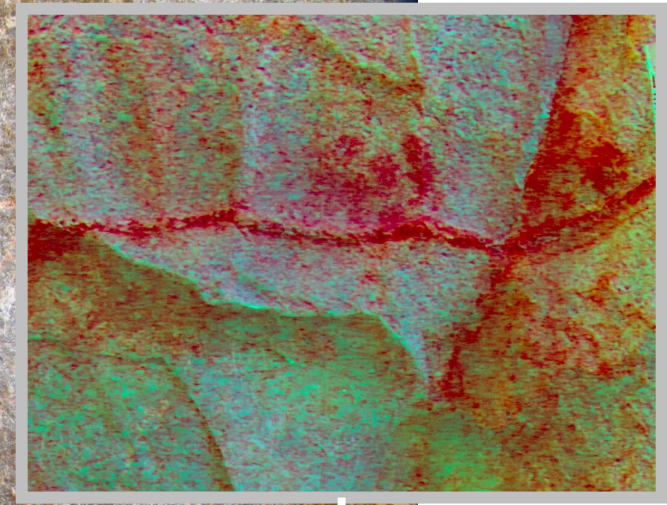
FIGURE 17: SAMPLE PUERTO_14
FIGURES AND SAMPLING LOCATION (A);
MICRO-RAMAN (B), EDXRF (C), AND ATR-
FTIR (D) SPECTRA AND STEREO
MICROSCOPE IMAGE (E).



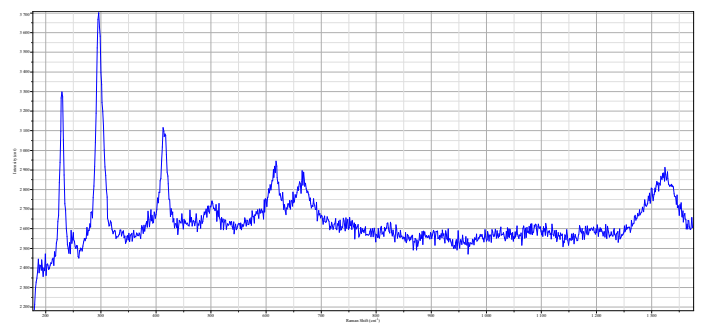


PANEL 15

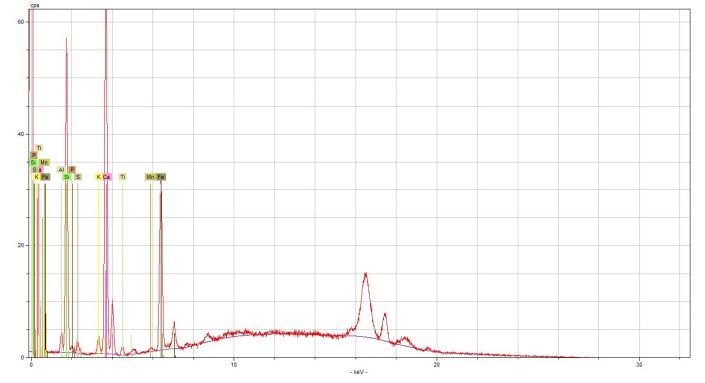
FIGURE 18: SAMPLE PUERTO_15 FIGURES AND SAMPLING LOCATION (A); MICRO-RAMAN (B) AND EDXRF (C) SPECTRA AND STEREO MICROSCOPE IMAGE (D).



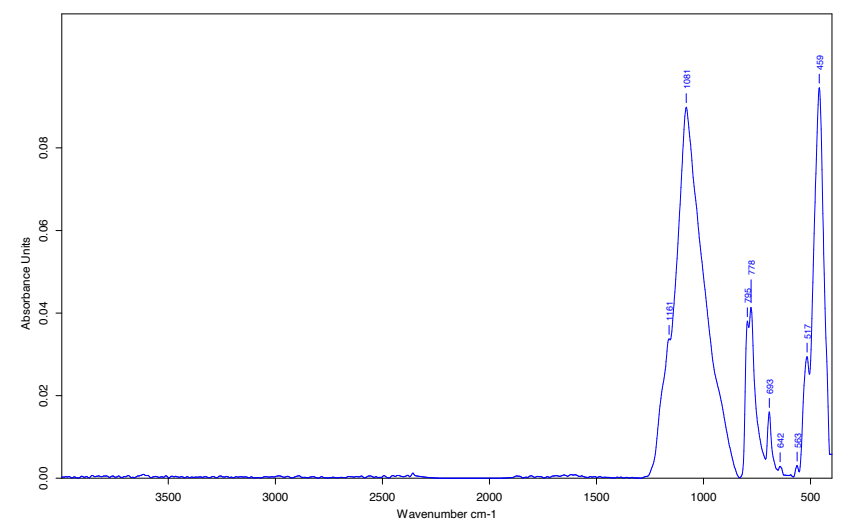
A



B

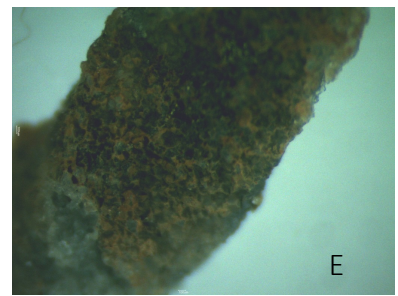


C

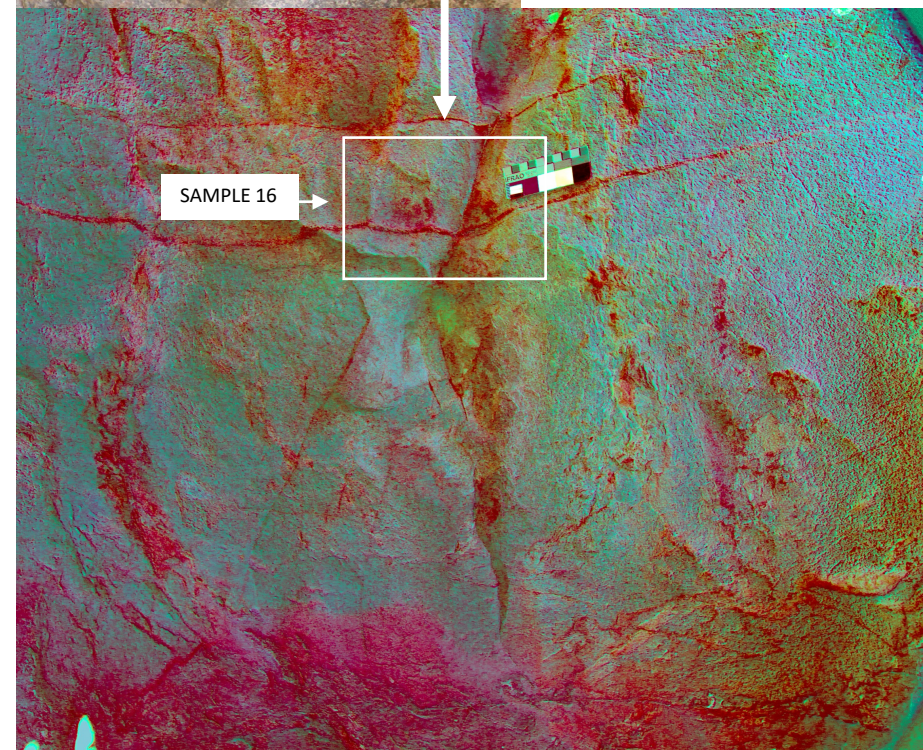


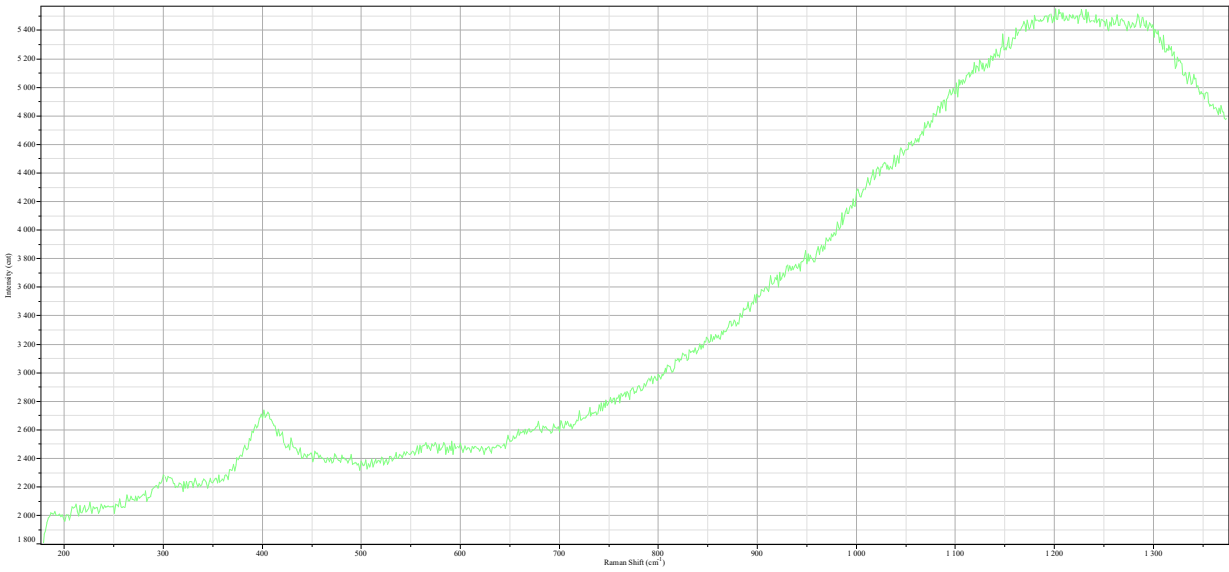
D

FIGURE 19: SAMPLE PUERTO_16 FIGURES AND SAMPLING LOCATION (A); MICRO-RAMAN (B), EDXRF (C) AND ATR-FTIR (D) SPECTRA AND STEREO MICROSCOPE IMAGE (E).

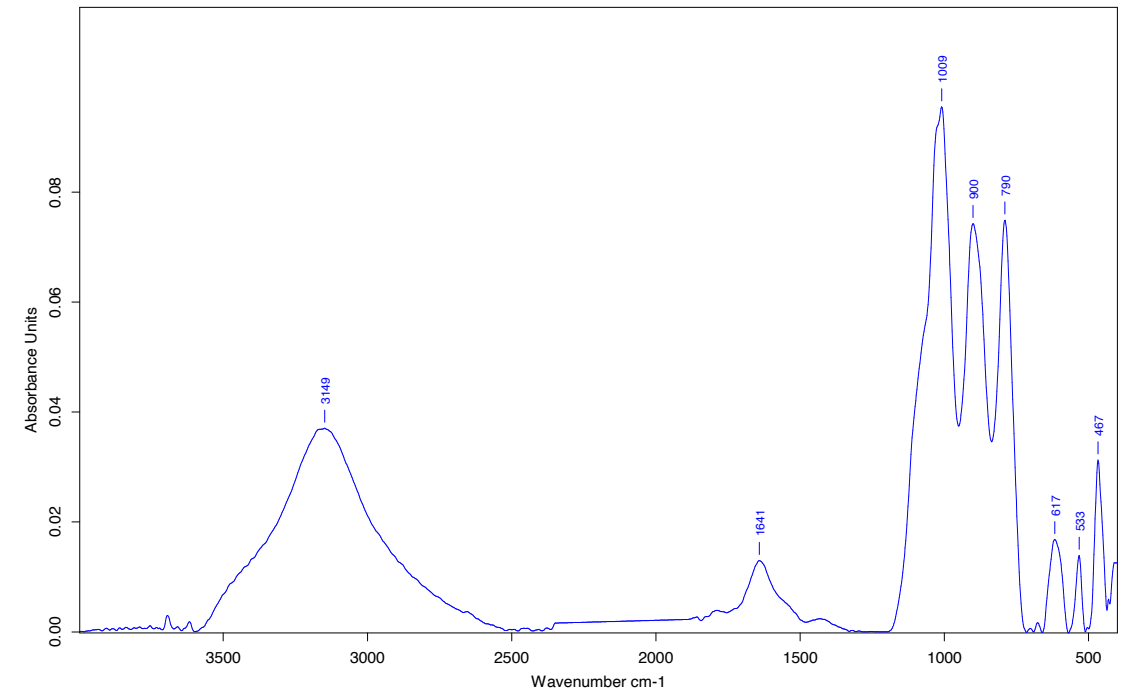


E

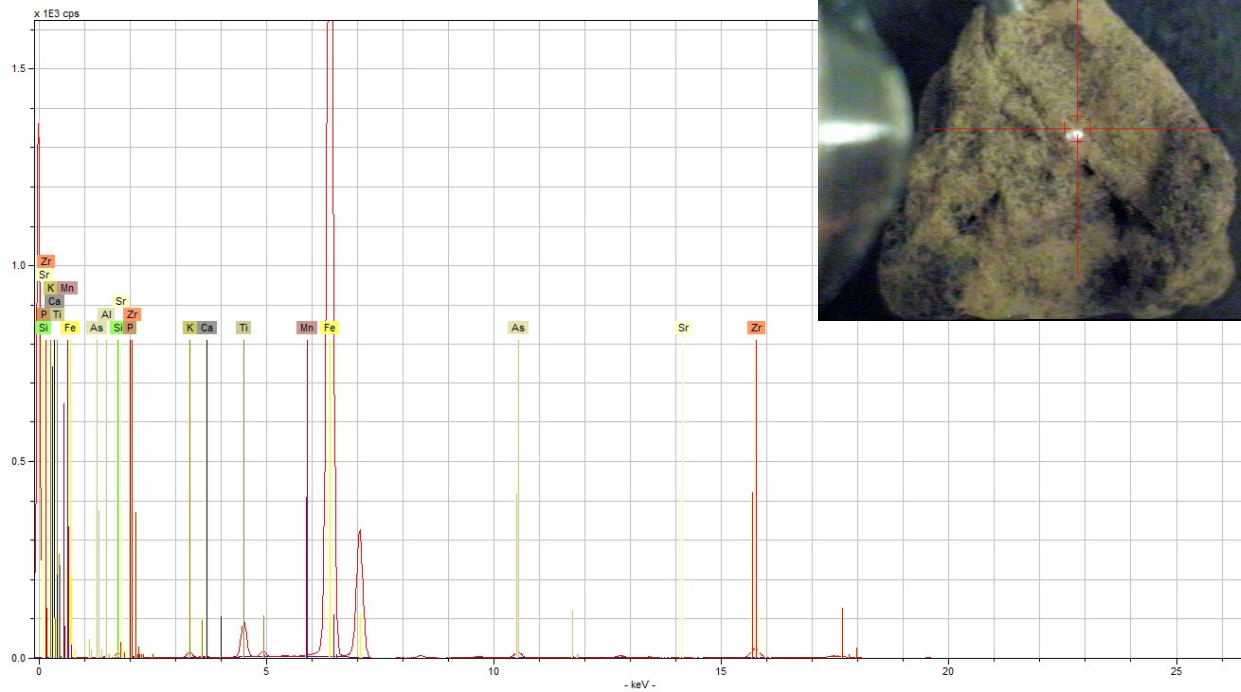




A



C

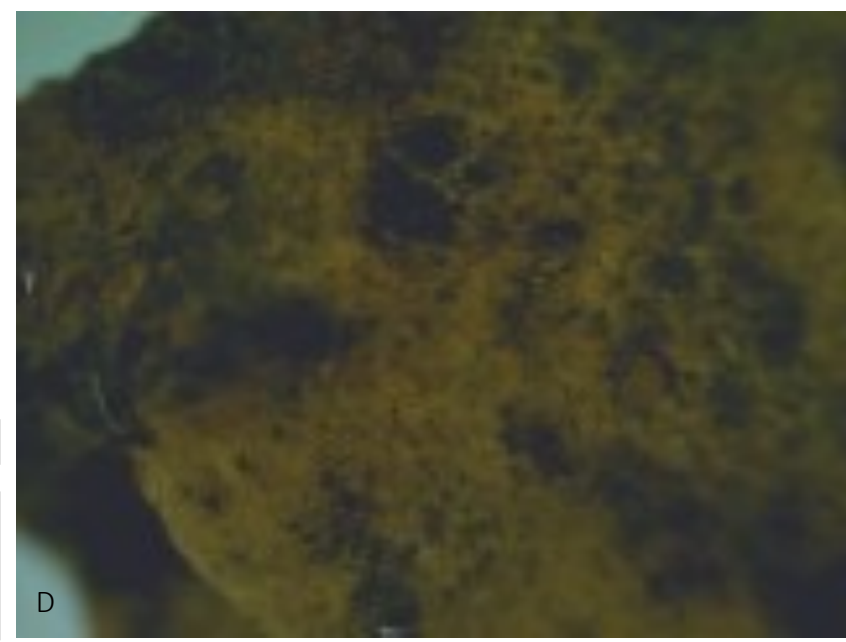


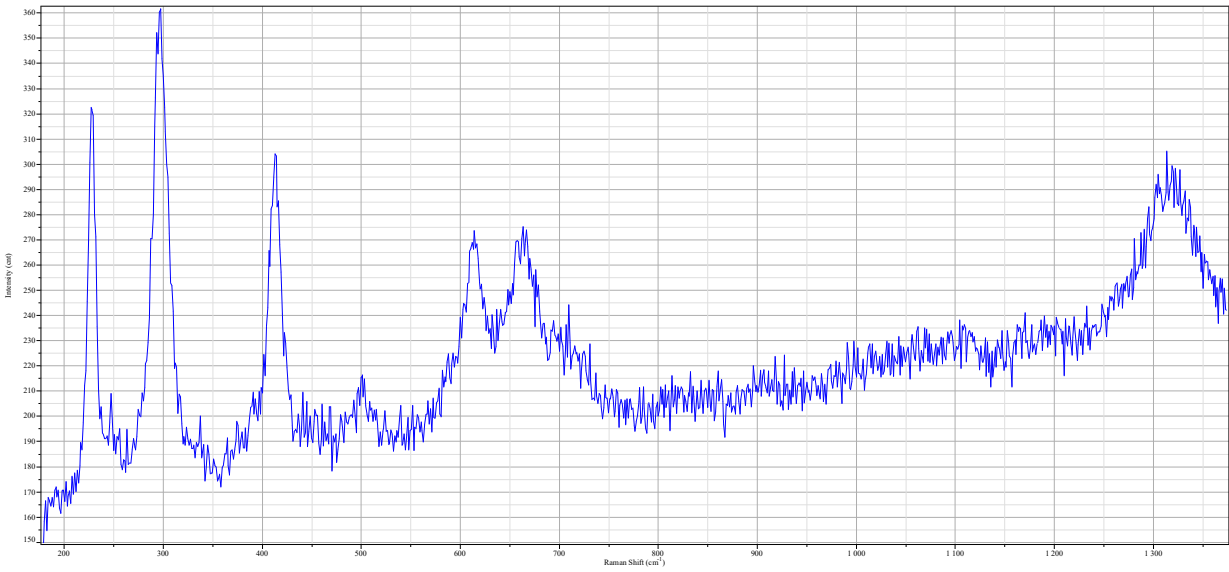
B



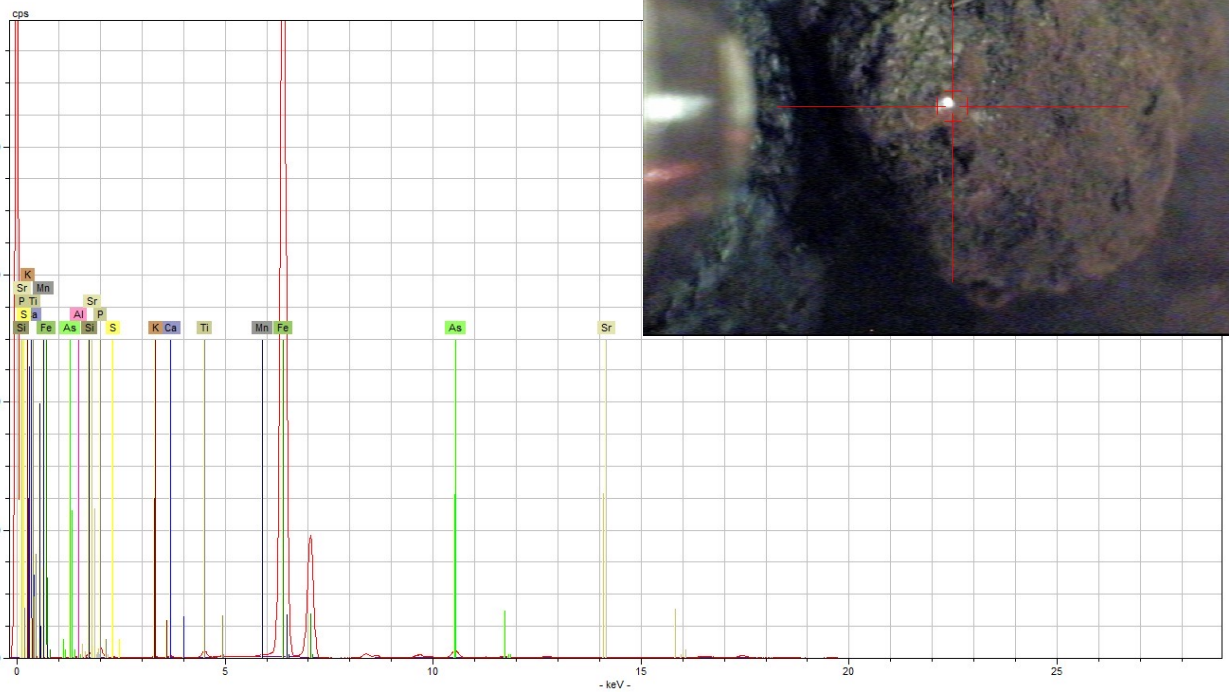
SAMPLE 17

FIGURE 20: SAMPLE PUERTO_17 MICRO-RAMAN (A), EDXRF (B) AND ATR-FTIR (C) SPECTRA AND STEREO MICROSCOPE IMAGE (D).

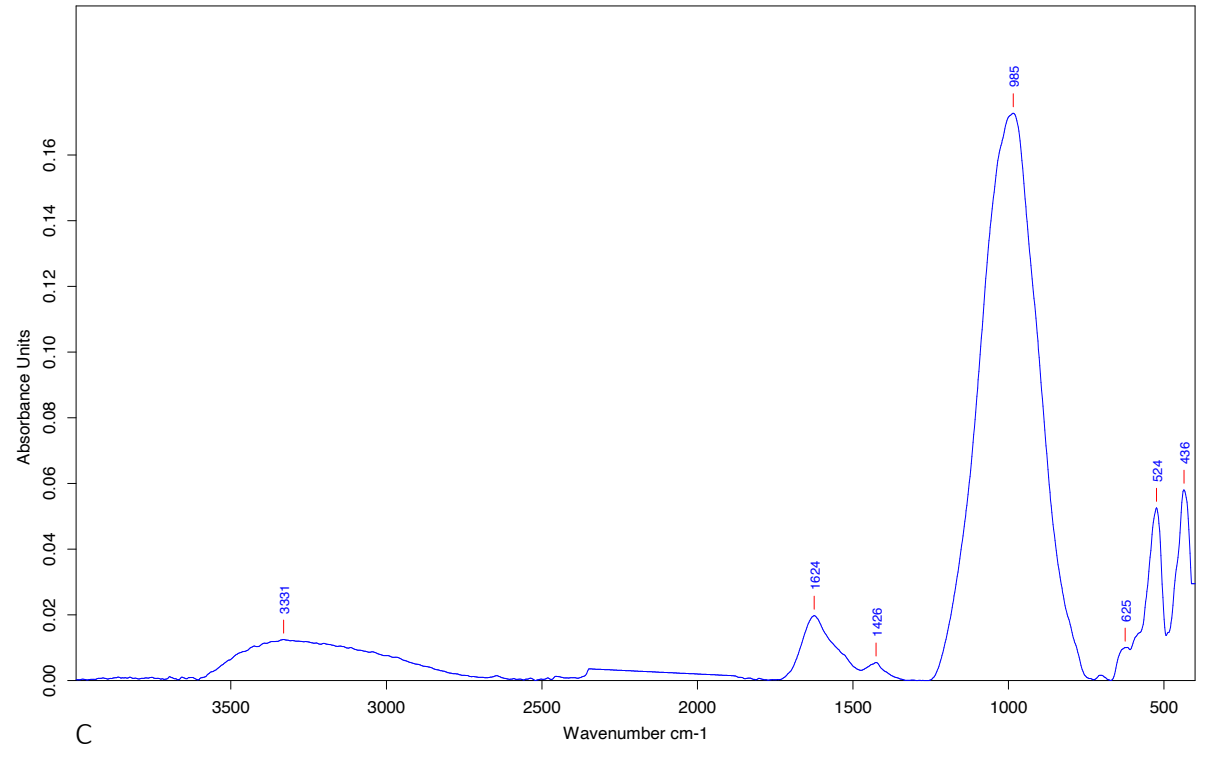




A



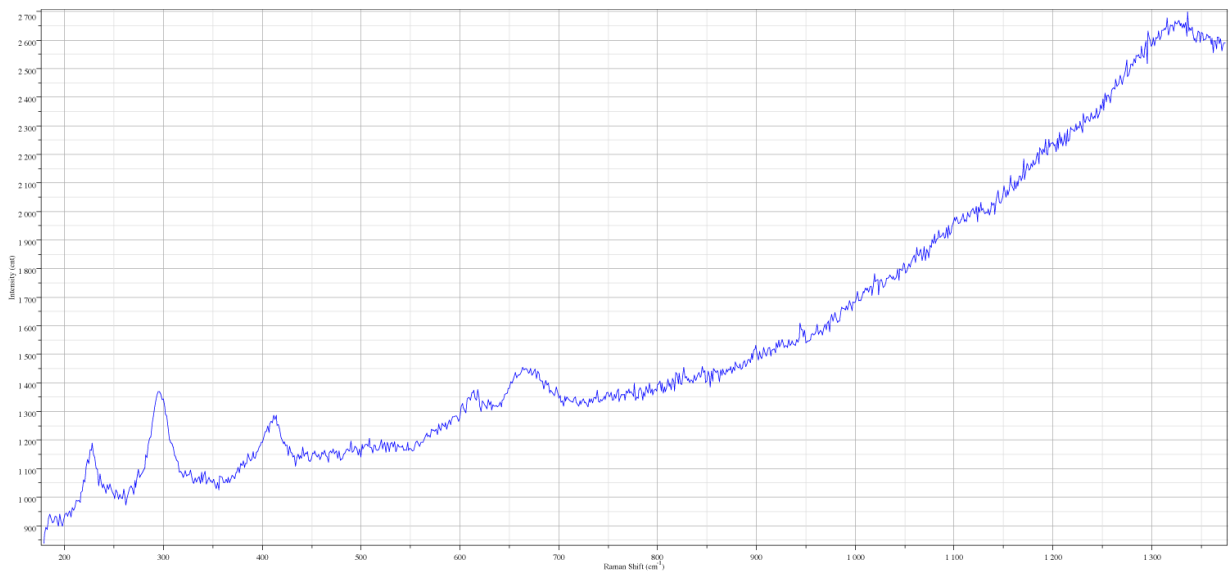
B



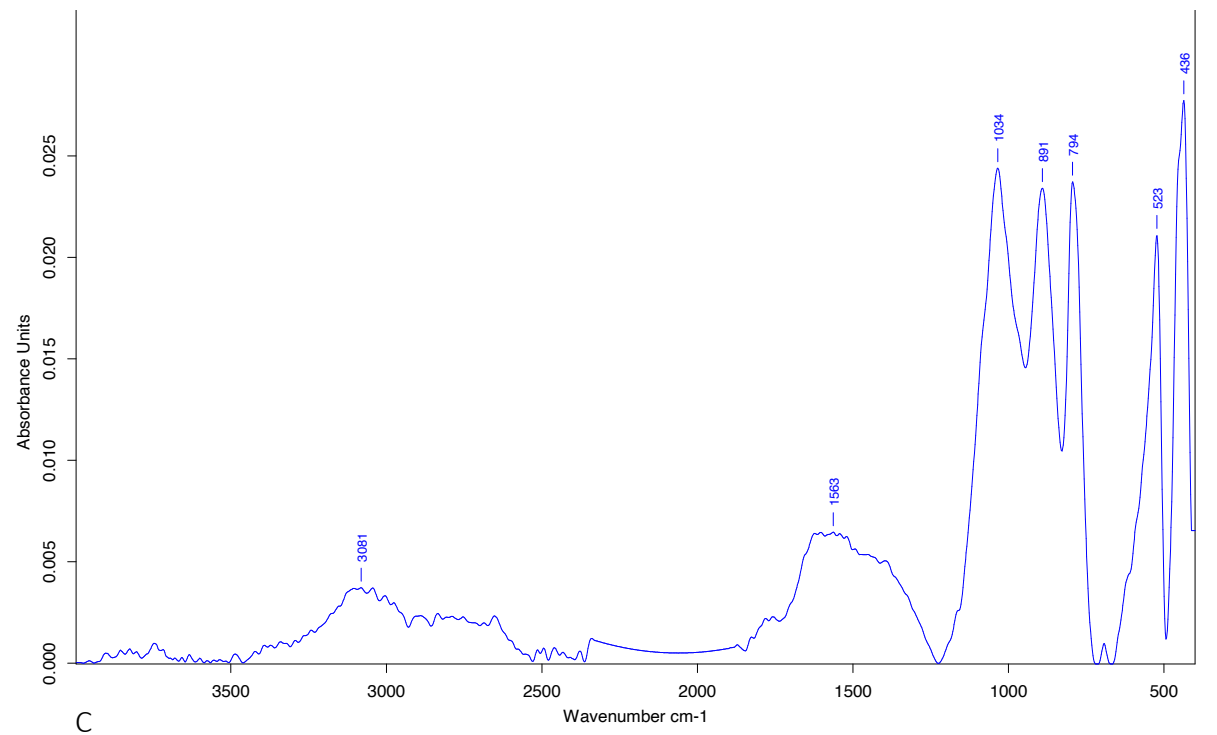
C

SAMPLE 18

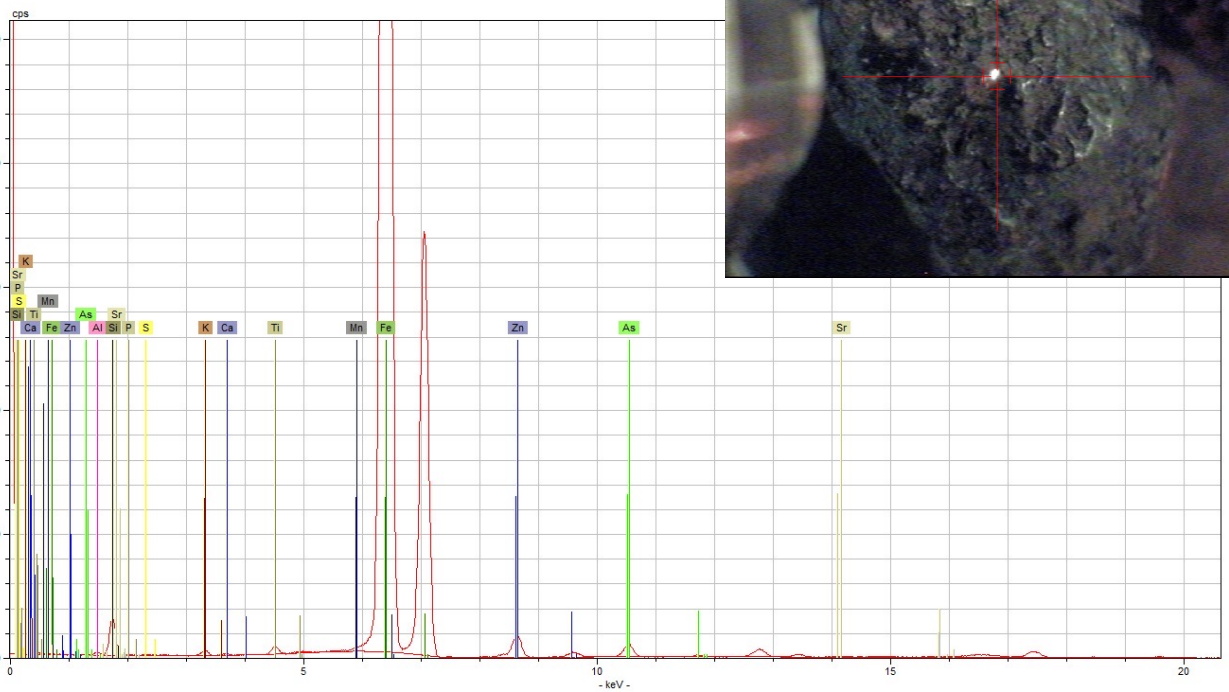
FIGURE 21: SAMPLE PUERTO_18 MICRO-RAMAN (A) AND EDXRF (B) AND ATR-FTIR (C) SPECTRA.



A



C



B

SAMPLE 19

FIGURE 22: SAMPLE PUERTO_19 MICRO-RAMAN (A) AND EDXRF (B) AND ATR-FTIR (C) SPECTRA.