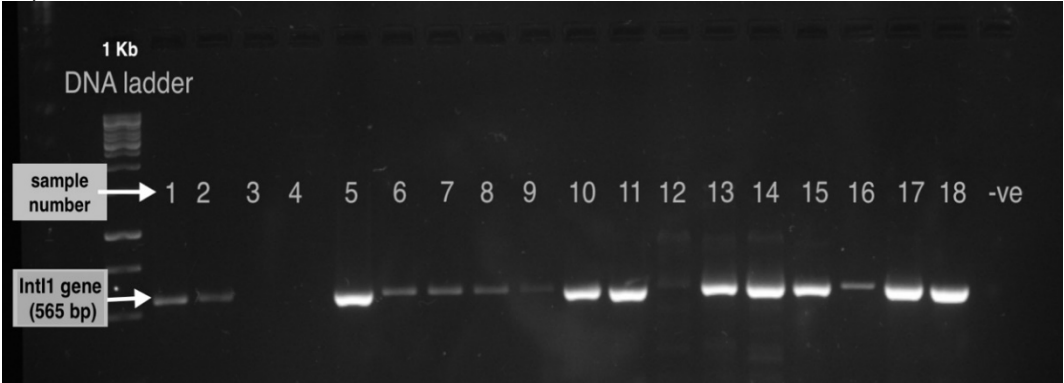
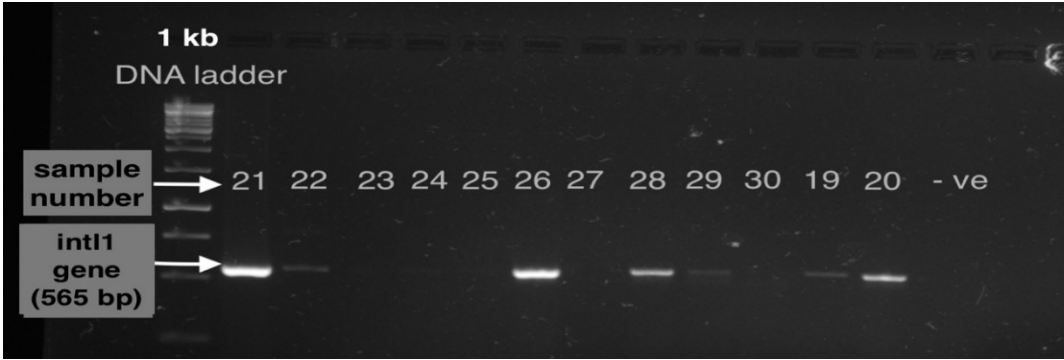


Supplementary figures

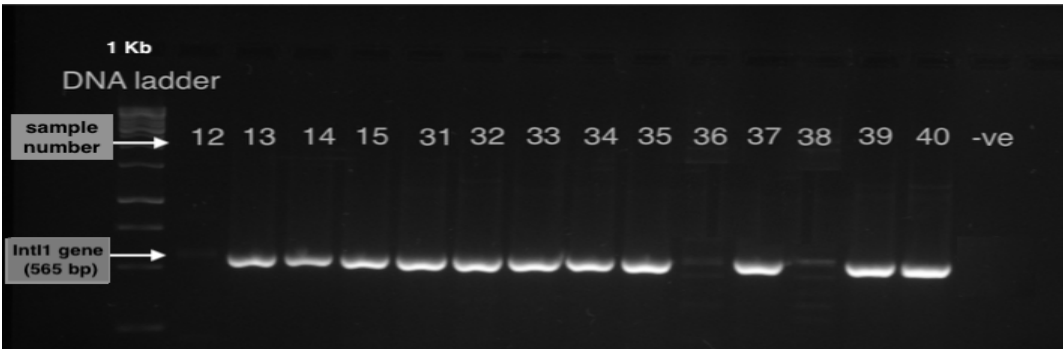
A)



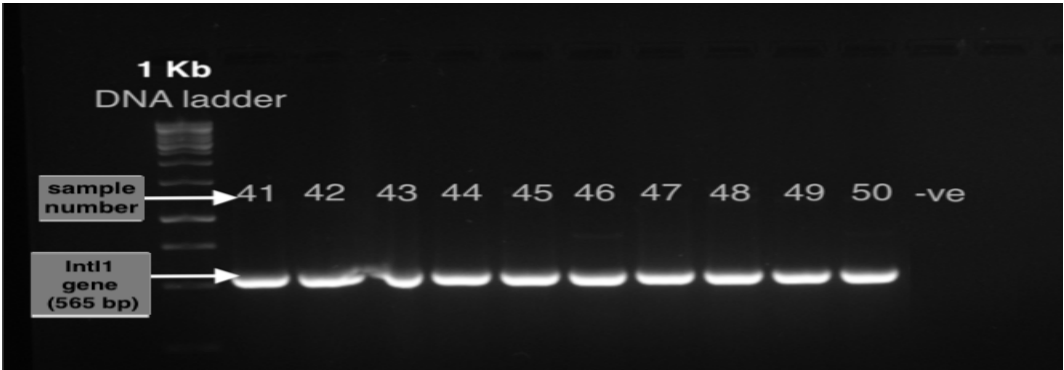
B)



C)



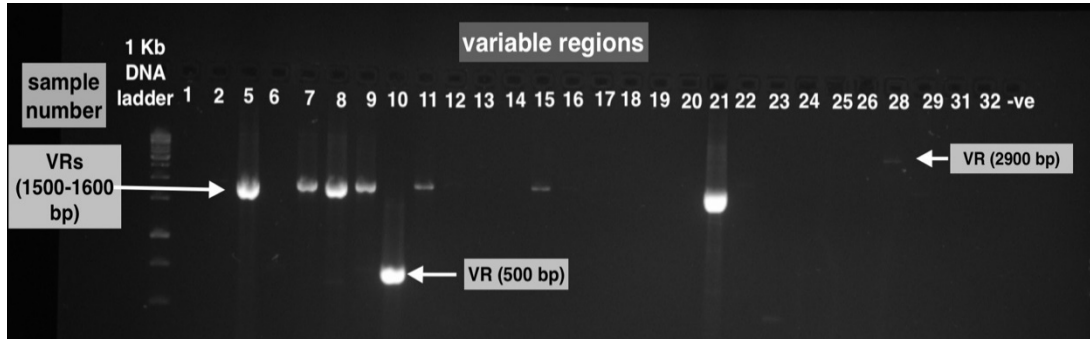
D)



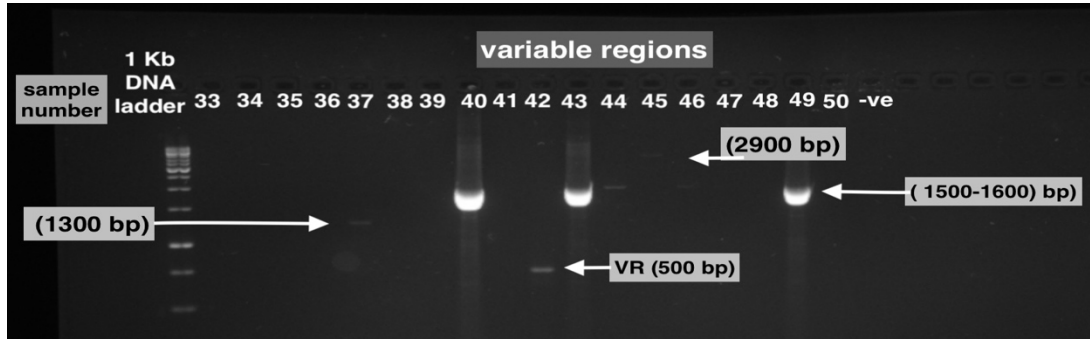
**Supplementary Figure 1 Agarose gel electrophoresis of class 1 integrons (IntI1 gene).**

(A, B, C, D) lane (1) 1 Kb DNA ladder, lane (2-19) *K. pneumoniae* isolates in A, (2-13) in B, (2-15) in C, and (2-10) in D. (-ve) negative control for integron gene.

**A)**

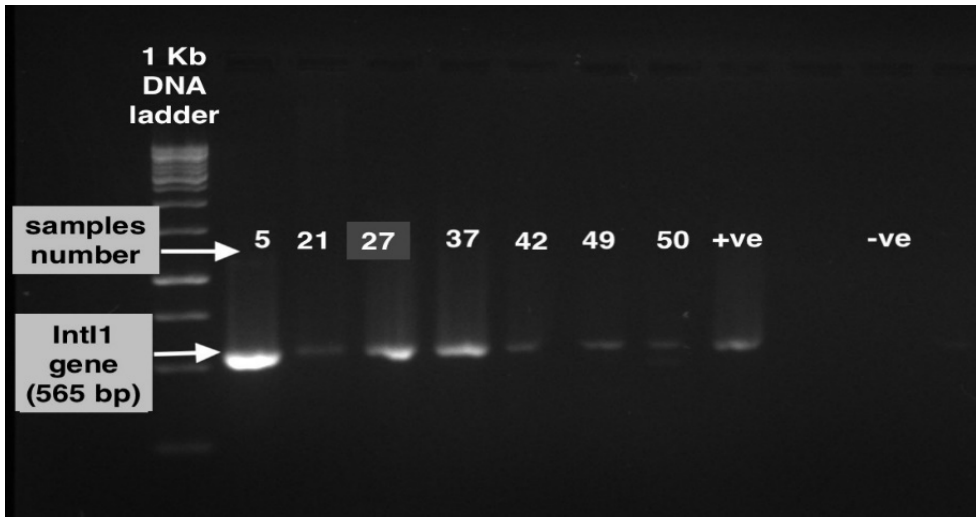


**B)**



**Supplementary Figure 2. Agarose gel electrophoresis of variable regions genes in 50 *K. pneumoniae* isolates.**

(A) and (B), lane (1) 1 Kb DNA ladder, lane (2-29) *K. pneumoniae* isolates in A, and (2-18) in B. (-ve) negative control for the variable gene.



Supplementary Figure 3. Agarose gel electrophoresis of class 1 integron gene in trans-conjugant colonies from the conjugation experiment (n=7). lane (1) 1 Kb DNA ladder, lane (2-8) *intI1* as conjugation experiment products (+ve) positive control, and (-ve) negative control.