

Supplementary Materials

Table S1. Weight loss of HA and minerals before and after sorption of HA (average of 2 analytical replicates).

Sample	Weight Loss Intervals and % of Total Weight Loss (Σ)					Σ , %
	40-105 °C	105-415 °C	415-690 °C	690-1000 °C	-	
Kaolinite	4.56	4.27	88.08	3.08	-	14.32
	73.13	7.08	17.91	1.88	-	
Bentonite	56.64	23.06	20.30	3.00	-	11.28
	27.20	10.17	21.21	35.07	6.36	
HA	9.42	15.91	74.04	2.49	-	17.81
	11.00	16.58	71.87	1.97	-	
Kaolinite+HA	7.30	17.50	74.69	2.03	-	17.38
	80.43	6.97	12.59	20.31	1.79	
1 st sorption cycle	74.52	5.54	19.94	22.76	1.68	22.10
	73.47	4.85	21.68	24.80	1.58	
2 nd sorption cycle	42.55	20.53	36.92	3.51	-	10.74
	37.89	24.74	37.37	3.23	-	
3 rd sorption cycle	37.43	23.53	39.04	2.78	-	11.28

491

492

493

494

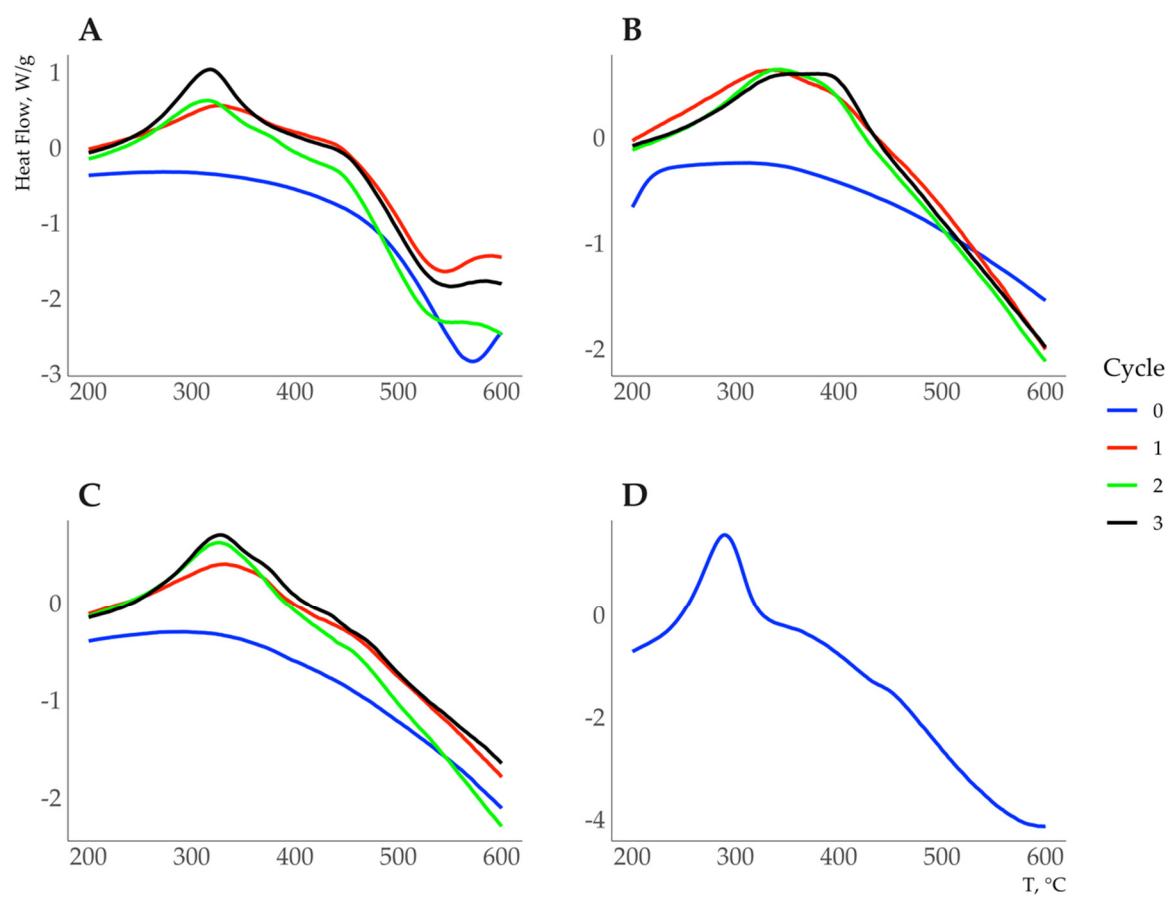


Figure S2. DSC curves for kaolinite (A), muscovite (B), bentonite (C), and HA (D), 200-600 °C region. The blue, red, green, and black colors indicate the DSC curves of the sorbents before HA sorption and after the 1st, 2nd, and 3rd sorption cycles, respectively.

495

496

497

498