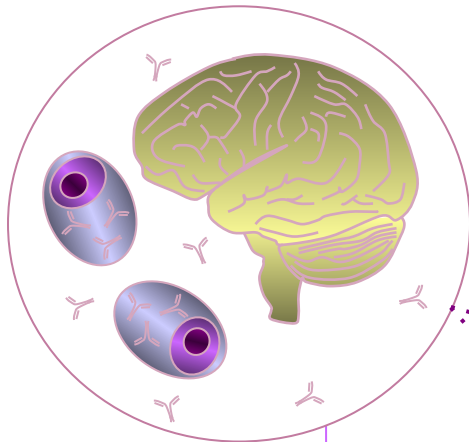


Intrathecal or central compartment



CSF

Serum

a



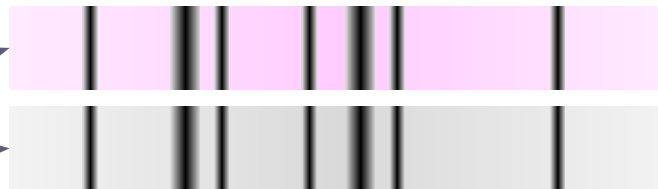
b



c



d



Systemic or peripheral compartment

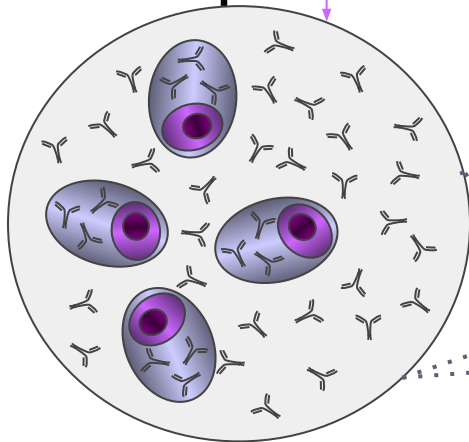


Figure 3. Significant differences in incidence of intrathecal oligoclonal IgG synthesis ($p < 0.05$)

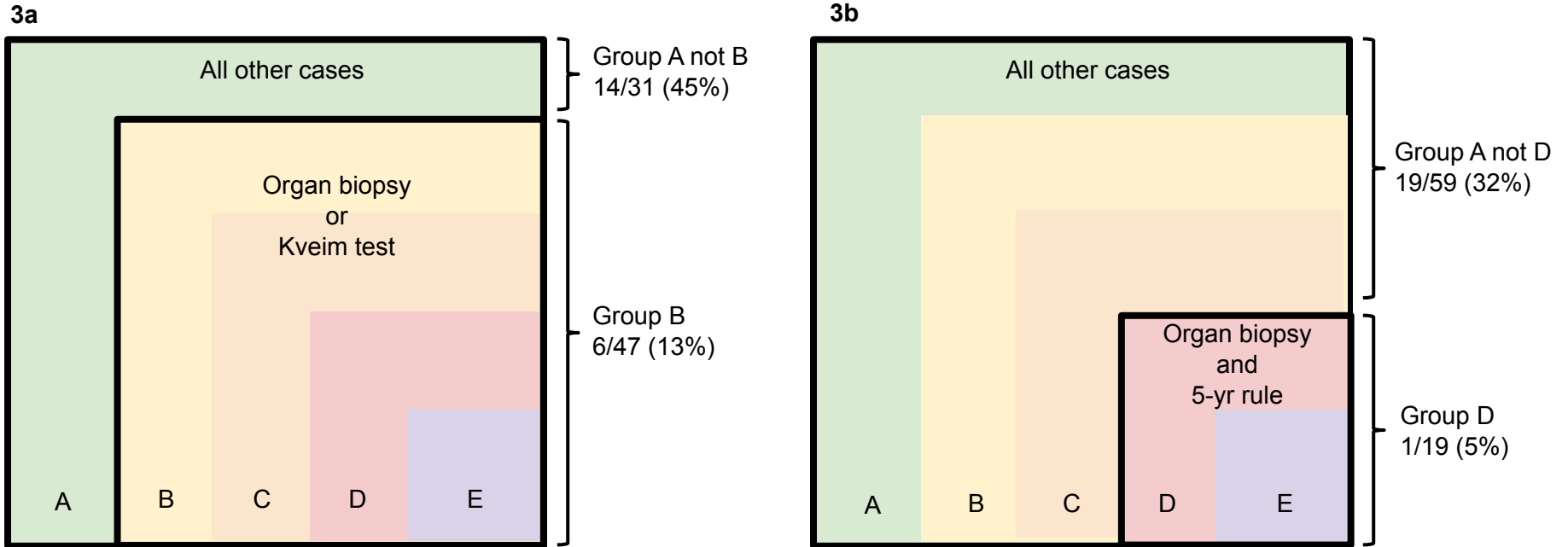


Figure 4. Significant differences in incidence of CSF total protein greater than 1.0g/L ($p < 0.05$)

