

Fig. S3

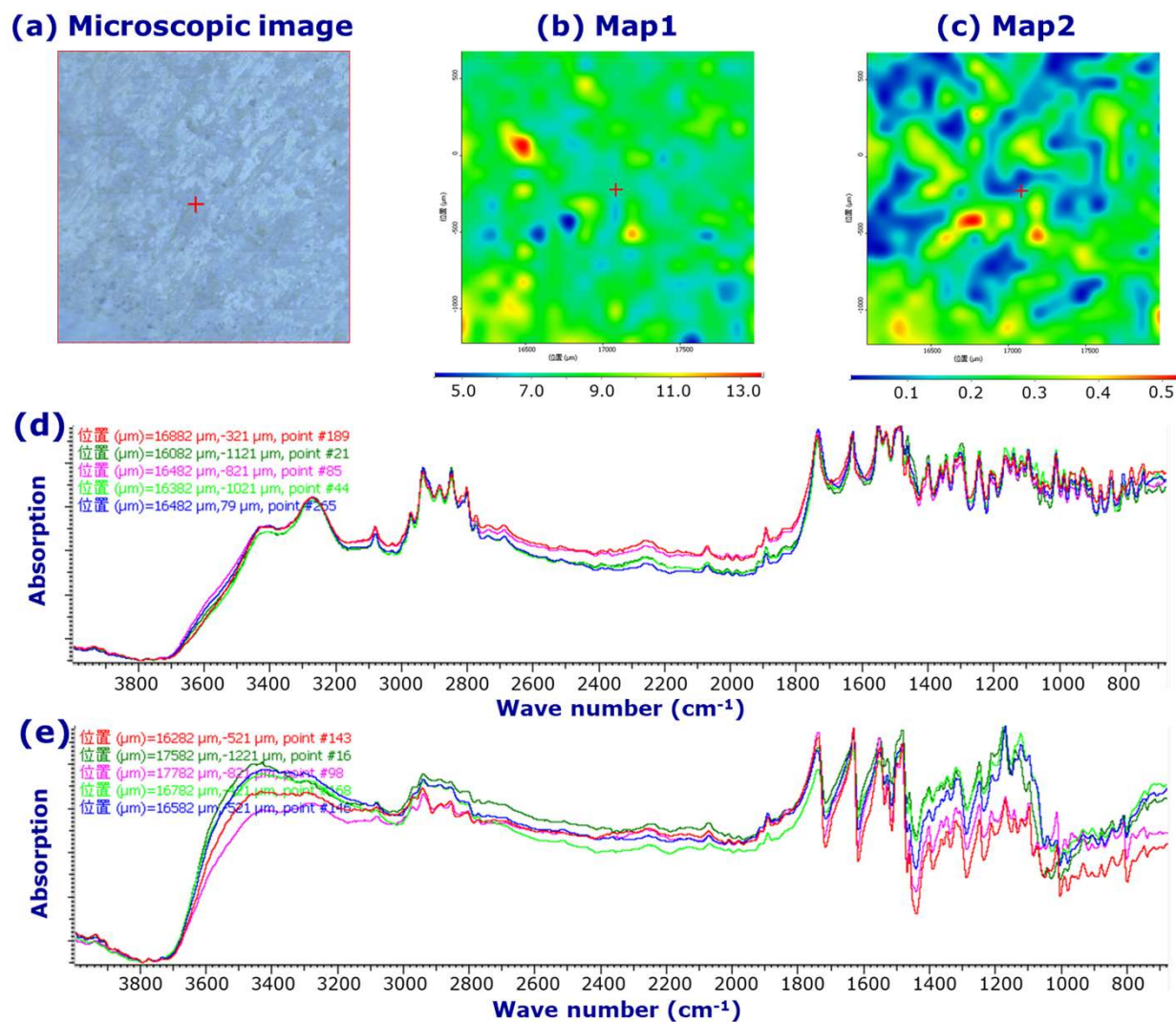


Figure S3 Microscopic and mapping images of the LV tablet formulation LV_{T_SAWAI} by microscopic IR spectroscopy (2000 μm × 2000 μm). Microscopic image (a), Map 1; mapping image obtained from the PA₁₇₀₀₋₁₈₀₀ of each spectrum. The red and blue regions indicate the high and low peak areas, respectively. The measurement area was 2000 μm × 2000 μm (b), Map 2; mapping image obtained from the CR_{MCC} of each spectrum. The red and blue regions indicate high and low correlations, respectively. The measurement area was 2000 μm × 2000 μm (c), IR spectra obtained from the measurement points in the red (d) and blue regions (e) of Map 1.