

Article

Glacial legacies: Microbial communities of Antarctic refugia

Abigail C. Jackson¹, Jesse Jorna¹, John M. Chaston² and Byron J. Adams^{1,3}

¹ Department of Biology, Brigham Young University, Provo, Utah

² Department of Plant and Wildlife Sciences, Brigham Young University, Provo, Utah

³ Monte L. Bean Museum, Brigham Young University, Provo, Utah

* Correspondence: AJ: ajackson260@gmail.com JJ: jjjorna@outlook.com

Simple Summary: Microbial communities in Antarctica have only recently been described with the increasing popularity and ease of genome sequencing. Using these methods, we aimed to test hypothesis of refugia using microbial communities in the McMurdo Dry Valleys of Victoria Land, Antarctica. Refugia are habitable areas that remained undisturbed during cycles of glacial expansions throughout Earth's history. They may contain ancient lineages and unique communities worthy of conservation, as well as provide insight into the biotic history of Antarctica. We find, unique microbial community assemblages from putative refugia in the McMurdo Dry Valleys indicating long-lived climax-communities in one of the harshest environments in the world. This finding corroborates the importance of glacial legacies in structuring not just the physical and geochemical environment, but also the soil microbial communities in this landscape.

Abstract: In the cold deserts of the McMurdo Dry Valleys (MDV) the suitability of soil for microbial life is determined by both contemporary processes and legacy effects. Climatic changes and accompanying glacial activity have caused local extinctions and geochemical changes to soil ecosystems over several million years, while high elevation refugia may have escaped these disturbances and existed under relatively stable conditions. This study describes the impact of historical glacial and lacustrine disturbance events on microbial communities across the MDV. Soil bacterial communities from 17 sites representing either putative refugia or sites disturbed during the Last Glacial Maximum (LGM) (22-17kya) were characterized using 16S metabarcoding. Regardless of geographic distance, several putative refugia sites at elevations above 600 meter displayed highly similar microbial communities. At a regional scale, community composition was found to be influenced by elevation and geographic proximity more so than soil geochemical properties. These results suggest that despite the extreme conditions, diverse microbial communities exist in these putative refugia that have presumably remained undisturbed at least through the last glacial maximum. We suggest that similarities in microbial communities can be interpreted as evidence for historical climate legacies on an ecosystem-wide scale.

Keywords: Antarctica; microbial communities; refugia; metabarcoding; McMurdo Dry Valleys; soil biodiversity

1. Introduction

Currently, only 0.34% of Antarctica is ice-free, with the remaining 99.7% covered by ice on average 2 km thick (Fretwell et al., 2013). While the McMurdo Dry Valleys (MDV), located in Southern Victoria Land, East Antarctica, are the largest ice-free region in Antarctica (~4,800km²), the contemporary conditions of the MDV are largely inimical to life. Mean annual temperatures of -20°C and annual precipitation of less than 5cm water equivalent (Doran et al., 2002) lead to highly stable, but inhospitable conditions in which communities experience little change (Elberling et al., 2006).

Soil communities in the MDV are markedly limited to few eukaryotic phyla present only in soils with suitable levels of carbon, moisture, and low salinity (Virginia and Wall, 1999) and are otherwise dominated by prokaryotic life such as bacteria and archaea (Takacs-Vesbach et al., 2010). Although microbial taxonomic knowledge is limited for MDV soil communities, molecular-based phylogenetic studies of MDV taxa find relatively high microbial diversity, particularly for those that are desiccation resistant, halotolerant, and psychrotolerant (Smith et al., 2006; Cary et al., 2010; Jiang et al., 2022). Actinobacteria, Bacteroidetes, Proteobacteria, Gemmatimonadetes, Cyanobacteria, and Acidobacteria are thus the most common phyla in the exposed soils of the (Cary et al., 2010; Lee et al., 2012).

The prokaryotic diversity in these remote valleys is largely endemic as there is no evidence of biological movement from other continents or sub-Antarctic Islands currently (Archer et al. 2019) and through the Cenozoic era (Convey et al., 2009, 2020; McGaughan et al., 2011, 2019). Through cycles of glacial expansion, refugia sites within the MDV that remained undisturbed and habitable, were necessary for endemic organisms' survival and eventual repopulation of glacially inundated or flooded valleys. The most recent major disturbance event in the MDV is from the Ross Ice Sheet incursion during the LGM (22-17 kya) as it encroached on coastal areas of the MDV and inundated the major valley basins with paleolakes and local glaciers experiencing asynchronous expansions to the global glacial cycles (Stuiver et al., 1981; Clayton-Greene, Hendy and Hogg, 1988; Hall, Denton and Overturf, 2001; Bockheim and McLeod, 2013; Levy et al., 2013). These recent landscape disruptions, give each valley a unique geological history (Stuiver et al., 1981; Bockheim and McLeod, 2013; Joy et al., 2017). Large differences in environmental conditions following divergent geological histories has resulted in phylogenetically distinct microbial communities found across the different valley basins in the MDV (Bottos et al., 2020; Lee et al., 2012).

Within the ice-free soil of the MDV, microbial community structure is constrained by local environmental conditions such as available moisture and soil geochemistry (van Horn et al., 2013). Soil geochemistry such as salinity, a proxy for soil exposure age (Bockheim, 1990; Campbell et al., 1998; Graly et al., 2018), and soil moisture are frequently cited as the strongest controls over community distributions (Freckman and Virginia, 1998; Lee et al., 2012; Dreesens, Lee and Craig, 2014; Jiang et al., 2022). Regionally, variation in community composition is dictated by these independent abiotic environmental conditions, while at local scales, variation in composition is linked to spatial autocorrelation and heterogeneous topography (Barrett et al., 2004). Connectivity of landscapes (Diaz et al., 2018) and biotic interactions (Caruso et al., 2019; Lee et al., 2019) are also increasingly recognized as additional drivers of community composition.

Historical legacy effects further influence microbial diversity patterns in the MDV. Specifically, glacial and lacustrine legacies dictate contemporary geochemistry, water availability, and soil organic matter content, thereby creating the heterogeneous landscape for various microbial communities (Campbell et al., 1998; Virginia and Wall, 1999; Burkins et al., 2000; Diaz et al., 2018). Experiencing sustained cold desert conditions since the mid-Miocene (23-5mya), the highest and longest exposed soils in the MDV are very low

in microbial biomass due to inhospitable cold-dry-salty conditions (Sugden, Marchant and Denton, 1993; Dragone et al., 2021; Spector and Balco, 2021; Halberstadt, Kowalewski and DeConto, 2022). Abundance and biotic complexity decrease with greater exposure age, such that soils exposed through the Last Glacial Maximum (LGM; 22-17 kya) are generally less suitable for life (Denton et al., 1984, 1993; Magalhães et al., 2012; Lyons et al., 2016). Instead, low elevation and limited salt accumulation are the best predictors of soil habitability in Dry Valley systems (Dragone et al. 2021). However, even lower elevation soils sustain lower levels of diversity and abundance if carbon depreciates and atmospherically deposited salts accumulate with long exposure ages and minimal periodic wetting (Virginia and Wall, 1999; Graly et al., 2018). Broadly, contemporary microbial distribution in MDV soil is thus a result of regional stochastic colonization processes and the habitability of heterogeneous microenvironments (deterministic processes). These processes, in combination with historical factors, such as the Ross Ice Sheet incursion, produce the observed patchy distributions, variable densities, and co-occurrence patterns observed in the contemporary structure of MDV microbial communities (Lee et al., 2019).

For most Antarctic regions, including the MDV, refugia sites have been an object of study to determine climax communities, phylogeographic patterns and repopulation rates (Marshall and Coetzee, 2000; De Wever et al., 2009; Bennett et al., 2016; Soler-Membrives et al., 2017; Biersma et al., 2018; Convey et al., 2020). Identifying MDV refugia requires several considerations. Firstly, soils need to be at high elevations, generally above 1000m, to have escaped recent glacial disturbance (Prentice, Kleman and Stroeven, 1998) or inundation by the expansion of the Ross Ice Shelf (Anderson et al., 2014). Secondly, habitable soils require periodic wetting to temper the negative effects of salt deposition for habitability (Nkem et al., 2006a). Finally, soils need to have been historically colonized and its biota persist through the LGM. Previous work on springtails (Stevens et al., 2007; Bennett et al., 2016), mites (Marshall and Coetzee, 2000), and mosses (Biersma et al., 2018) support evidence of glacial refugia using population-level genetic comparisons between refugia and more recently colonized habitat. Phylogeographic analyses have been used to identify Antarctic refugia, both on Antarctic islands (Soler-Membrives et al., 2017) and on the continent itself (De Wever et al., 2009). Microbial signatures of refugial are expected to reflect these phylogeographic patterns, with putative refugia displaying distinct climax communities and exhibiting phylogenetic similarity when compared to more recently disturbed locations.

These cold desert ecosystems are particularly sensitive to environmental changes, brief or long-term, due to millions of years of adaptation in severely limited and extreme environments (Fountain et al., 2016). Climate change has already altered the community composition of microfauna in the MDV, disproportionately impacting species adapted to dry and cold conditions, and ultimately decreasing the overall abundance of soil fauna (Andriuzzi et al., 2018). Ancient, endemic lineages only persist in patchily distributed habitable spaces (Sohlenius and Boström, 2008) and are already at the limits of life in the discontinuous environments of the MDV. Climate change may disproportionately affect these dispersal-limited terrestrial organisms given the lack of ecosystem function overlap in the MDV (Barrett et al., 2008; Fountain et al., 2014, 2016). Identifying past and present refugia is an important consideration in understanding the resistance and resilience of the MDV to climate change (Keppel et al., 2012). This study presents a biological sampling effort of sites in the MDV which may represent putative refugia to determine if there is a microbial community signature comparable to previous patterns observed for invertebrates and mosses in other Antarctic systems, such as higher phylogenetic diversity of microbial taxa in putative refugia sites. We set out to better understand how the structure of microbial communities corresponds to the glacial history of these valleys and identify areas of high biodiversity providing sanctuary to Antarctic life during its climate history.

2. Materials and Methods

2.1 Sampling site selection

We selected sampling sites based on the following criteria: signs of periodic wetting, elevation, published exposure age estimates, and proximity to recorded local glacier terminal moraines or paleolake shorelines. Putative refugia were selected at higher elevations that avoided paleolake inundation and glacial incursion, yet still experienced periodic wetting to temper the negative effects of salt deposition on viable mesofaunal communities (Nkem *et al.*, 2006a; Magalhães *et al.*, 2012). Sites disturbed during the LGM either by glacial expansion or paleolake inundation were chosen at lower elevation and with reported soil exposure ages younger than the LGM (less than 26kya), as well as proximity to recorded local glacier terminal moraines or paleolake shorelines (see Table 1 for site classification). Information from geological surveys dating soil exposure ages was used to discriminate between sites that have remained exposed since before the LGM (>26kya) as putative refugia, and more recently disturbed sites. However, no precise consensus about which candidate sites represent actual refugia in the MDV exists in the current literature due to an incomplete exposure dating record and limited biological census identifying high elevation habitats.

Two sample sites were chosen per valley system to incorporate varying geological histories, although not every valley system could be represented by both a putative refugia and disturbed site. Samples were all collected from sites in the MDV during the Antarctic summer, between December and February, in years ranging from 1994 to 2018. Figure 1 shows sample locations on a map of the McMurdo Dry Valleys. Site elevation and distance from coast was estimated using Google Earth.



Figure 1 Map of the Dry Valleys and sampling sites. All 17 samples are displayed at their approximate location of origin. Sites that are classified as disturbed sites are displayed as a square symbol and are marked with blue text, and putative refugia are displayed as diamonds and accompanying red text. Colors of the site markers indicate which valley basin they belong to.

2.2 DNA extraction and Sequencing

Entire soil top layers to 10cm depth were removed using the standard sampling procedure for Dry Valley soils described in Freckman and Virginia (1993). All samples were frozen after initial microinvertebrate extractions and were thawed to 10 degrees prior to microbial DNA extraction. DNA extraction was performed on each sample using the provided standard protocol with DNeasy PowerSoil Kit (Qiagen). For each sample, 0.25 grams of homogenized whole soil was used for each extraction, replicated 6-fold per sample. A total of 5 negative controls were also performed on pure PCR-grade water during extraction. One reagent-only control was included in the final sequencing products and one positive control was used to ensure amplification and sequencing worked as planned. Sequencing libraries were prepared from each sample following established protocols (Kozich *et al.*, 2013). 4 μ l of extracted DNA was added to a 96 well plate including sample-specific primers with 17 μ l of AccuPrime Pfx Supermix, and 2 μ l of each paired set of dual-indexed primers for the V4 region of the 16 S rRNA gene (Kozich *et al.*, 2013). To prevent evaporation during thermal cycling, a drop of mineral oil was added to each well. Individual 20 μ l reactions were placed into a thermocycler at 95°C for 2 minutes followed by 30 cycles of 95°C for 20 seconds, 55°C for 15 seconds, and 72°C for 5 minutes then 72°C for 10 minutes and held at 4°C. Amplified DNA was visualized via gel electrophoresis using 4ul of amplified DNA and 4 ul of loading dye in a 1% agarose gel at 100v for 60 minutes alongside a DNA ladder. PCR amplicons were normalized and pooled to 20ng/ul per sample using the Charm Biotech Just-a-Plate™ Normalization kit. Amplicons were submitted for sequencing on an Illumina MiSeq using paired-end 500 cycle v2 chemistry at the Arizona State University genomics core sequencing center. All post-extraction steps included a reagent-only negative control to remove potential contaminant sequences.

2.3 Community analysis

All analyses were performed using QIIME 2 (q2) 2021.2 (Bolyen *et al.*, 2019). Raw sequence data from 109 samples plus 5 negative controls and one reagent-only control were first demultiplexed and quality filtered using the q2-demux plugin then denoised with DADA2 denoise-paired function (via q2-dada2) (Callahan *et al.*, 2016). Sequences were matched with the metadata feature table. Taxonomy was assigned to ASVs using the q2-feature-classifier (Bokulich *et al.*, 2018) classify-sklearn naïve Bayes taxonomy classifier against the Silva 138 99% 515F/860R region sequences (Quast *et al.*, 2013). Sequences were filtered to remove any chloroplast, mitochondria, and Archaeal DNA reads with q2's in-built function. Taxonomy bar plots were generated in q2 to visualize diversity at the class-level, excluding samples with fewer than 3 classes represented in total (Figure 2) to remove their outlier effect on beta-diversity metrics. The remaining 86 samples were used to construct a phylogenetic tree with FastTree 2 (Price, Dehal and Arkin, 2010) (via q2-phylogeny) using MAFFT (Katoh *et al.*, 2002) (via q2-alignment) aligned sequences. Based on the observed features, samples were then rarefied (subsampling without replacement) to 2470 sequences per sample, which excluded the negative and reagent-only controls, leaving 81 samples for diversity analysis. Lower Beacon Valley was the only sampling site where all samples had sequencing depths below this filter point and as such all those samples were excluded from further analyses.

Diversity metrics were all computed using q2-diversity, including alpha-diversity, Pielou's evenness index (Pielou, 1966), Shannon entropy (Shannon, 1948), Faith's Phylogenetic Diversity (Faith, 1992), beta diversity weighted UniFrac (Lozupone *et al.*, 2007), unweighted UniFrac (Lozupone and Knight, 2005), Bray-Curtis dissimilarity (Bray and Curtis, 1957), and Principle Coordinate Analysis (PCoA). The average change in PC1 for each site, overall, was tested for difference from zero using a one-sample t-test with Benjamini-Hochberg false discovery rate (FDR) correction (Benjamini and Hochberg, 1995). Significant differences between the mean community composition were calculated using q2's inbuilt PERMANOVA analysis.

Lastly, specific analysis of microbiome composition (ANCOM) (Mandal *et al.*, 2015) was performed to assess which taxonomic groups were differentially abundant between samples from different valley basins and between putative refugia and disturbed sites. An ANCOM statistical test generates *W*-values representing a count of ANOVAs that rejected the null hypothesis that a given ASV is equally abundant per site (Mandal *et al.*, 2015). Using this method, we tested the significance of each ASV being differentially abundant among our tested groups – those with differing site history and those taken from different valley basins. Differentially abundant taxa were resolved to the best taxonomic resolution against the Silva reference database.

Frequency of bacterial clades across samples

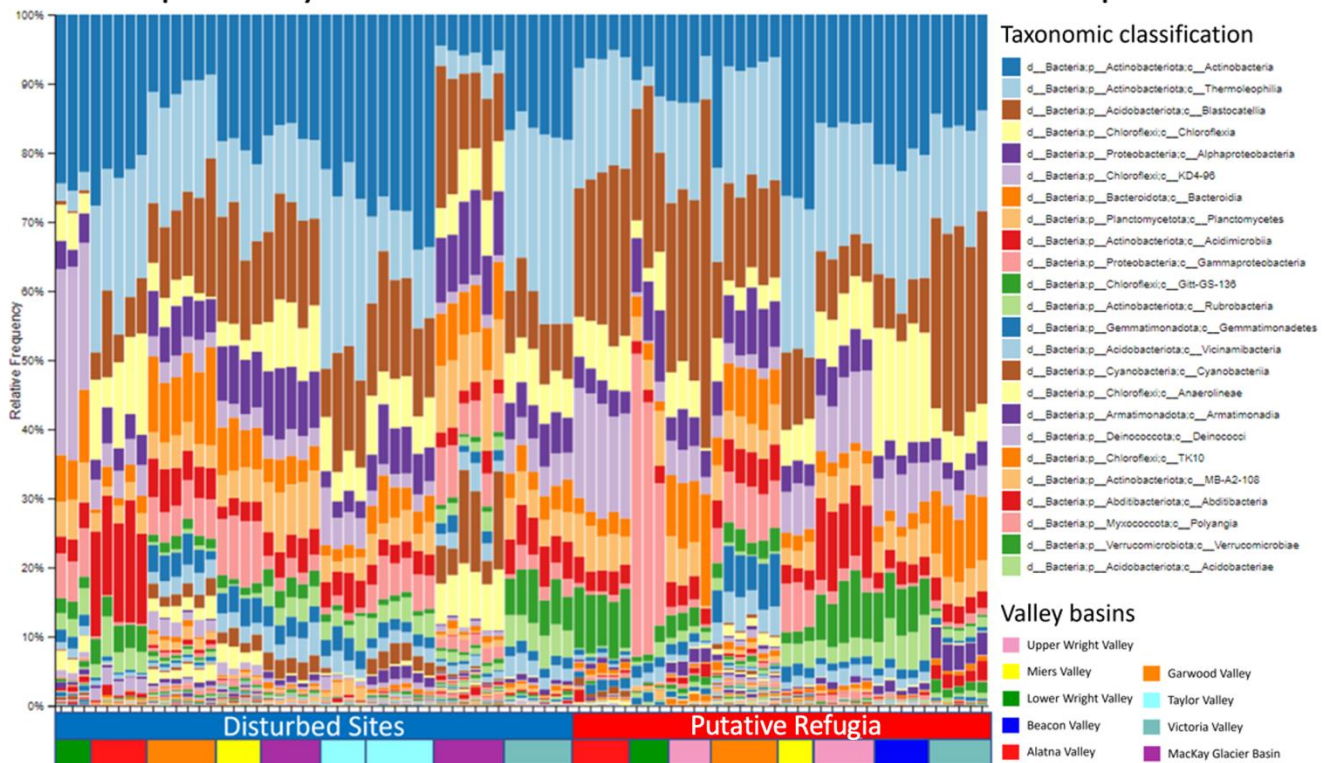


Figure 2. Frequency of bacterial clades across samples. Relative frequency of ASVs in each sample is displayed at the class level; The vertical axis shows the proportion of total ASVs in each sample for each class. The horizontal axis is coloured to show if a sample originated from a site characterized as a disturbed site or putative refugia. Colors represent the valley basin the sample was taken from.

2.4 Environmental analysis

Soil environmental parameters were analyzed to control for the potential effects on microbial community composition. Soil acidity and conductivity are important in driving the abundance of key bacterial groups in Dry Valley ecosystems (Geyer *et al.*, 2013), even on a very fine scale (Feaser *et al.*, 2018), while productivity is largely driven by soil moisture content and freely available organic material (Geyer *et al.*, 2017).

Environmental analyses were performed by the BYU Environmental Analytics Lab. In short, gravimetric water content was estimated by drying 25g of soil at 105°C and weighing soil dry mass, electroconductivity was measured using a RC-16C Conductivity Bridge (Beckman Instruments, Brea, CA) and pH was measured using a Thermo Orion Model 410A+ (Thermo Electron, Waltham, MA). Organic matter content was detected using chromic acid titration (Walkley and Black, 1934) and ammonium and nitrate content measured on a Fialyzer 2000 (FIALab, Seattle, WA). Phosphorus and potassium content was

measured using 0.5M sodium bicarbonate following the Schoenau and Karamonos (1993) protocol.

2.5 Statistical analyses of alpha diversity

Qiime2's built-in Kruskal Wallis tests were used to compare the diversity between the two groups with different hypothesized glacial histories, and between the different valley basins. The Shannon diversity index was used to assess the differences in alpha diversity between sampled sites. This alpha diversity index was chosen so that abundant taxa and phylogenetic differences between the community members at different sites would be represented in the community analysis. As Shannon diversity had a normal distribution across our sampled locations, the effects of elevation, location, and site geochemistry on microbial alpha diversity were modeled using multiple linear regression models (Preacher, Curran and Bauer, 2006) in R (R Core Team, 2002). To control for correlative effects of different environmental conditions, a model selection approach was used to select the best explanatory factors for the full dataset as well as the putative refugia sites and the assumed recently disturbed sites separately. The full dataset was considered by including the variations between putative refugia sites and disturbed sites as a random effect, and r-squared values were estimated for the resulting mixed effect models using the piecewiseSEM package in R (<https://github.com/jslefche/piecewiseSEM>). As samples were sequenced in up to six replicates, within-location variation was included as a random factor to avoid pseudoreplication. Distance to coast and elevation were strongly correlated in the dataset and so were considered separately to select a best-fitting model. The effects of distance to coast and elevation were further explored in the complete model selection using other environmental factors, which were correlated to these effects in different ways depending on the sites proposed glacial history.

2.6 Non-metric multidimensional scaling (NMDS)

The beta diversity results of the different communities were combined with the effects of our measured environmental variables to plot these interactions in non-metric multidimensional space (Kenkel and Orloci, 1986). Using the vegan package in R (Oksanen *et al.*, 2022) the community composition of each site was plotted in ordination space using the Bray-Curtis distance metric, after which the environmental drivers of this composition were plotted using proportionally scaled arrows.

3. Results

3.1 Sample site classification

Given that our sampling sites were uniformly chosen for habitable soil, that is, signs of periodic wetting and limited salt accumulation, geochemical factors normally used as a proxy for soil exposure age – sulfate, nitrate, and chloride concentrations – were not used to categorize sites in this study (Bockheim, 1990; Campbell *et al.*, 1998; Van Horn *et al.*, 2013; Graly *et al.*, 2018). The initial classification of putative refugia or disturbed site status, mainly relied on published exposure age estimates (Table 1). Putative refugia sites were identified in all sampled valley basins except the McKay Glacier Basin and Taylor Valley, while disturbed sites were located in all valley basins except the Beacon and Wright Valleys. Putative refugia sites were located at elevations ranging from 646m (Miers Valley) to 1522m (Beacon Valley), while disturbed sites were generally located at much lower elevations ranging from 9m (Taylor Valley) to 873m (McKay Glacier Basin) above sea level.

3.2 Data retention

After filtering for chloroplast, mitochondrial, and archaea sequences and removing samples with only one taxon, 86 samples were left containing 1,452,932 features. All negative controls and a reagent-only control were filtered out during this step as they all contained 3 taxa or less. Based on the alpha rarefaction curve (see Supplementary Figure 1), samples were filtered to a sampling depth of 2470 sequences per sample, retaining 81 samples and 200,070 features. Battleship Promontory, Labyrinth, Levy Cirque, Lower Alatna Valley, Lower Mt Suess, and Wall Valley each retained $n = 5$. Brownworth, Higher Miers Valley and the Dais each retained $n = 3$. Miers Lake, Hawkings Cirque and Lower Taylor Valley retained $n = 4$. All other samples retained $n = 6$. Lower Beacon Valley was filtered out due to low sequencing depth. Retained samples thus represented 17 total sites containing 8 paired high and low elevations, 6 of which are hypothesized to have escaped recent glaciation and the others having been recently disturbed in the LGM. Taxonomic composition across these samples at the class level are presented in figure 2. A total of 85 different classes were identified across our samples, with the top 3 classes being Actinobacteria, Blastocatellia and Thermoleophilia, together making up around 40% of total reads (Figure 2). Actinobacteriota, Acidobacteriota, Chloroflexi, and Alphaproteobacteria were the four most prevalent phyla of the 33 identified, together making up at least 40%, but frequently over 60% of the reads in each sample after filtering.

3.3 Alpha Diversity

Shannon diversity was highest in the McKay Glacier Basin and Garwood Valley, followed by Miers Valley, but significant differences in diversity were found within some of these valleys (Figure 3). For example, significantly higher diversity was found in the disturbed site within Miers Valley than in the higher elevation putative refugium in the same valley basin ($P < 0.05$, Kruskal-Wallis pairwise comparison). The full table with Shannon diversity comparisons between each site is reported in Supplementary Table 1. Overall, a higher alpha diversity was found in recently disturbed sites over putative refugia sites and this distinction was found to be significant between the two groups ($p=0.002$, Kruskal-Wallis pairwise comparison). These results were consistent between the Faith PD metric and Shannon diversity, but not when calculating Pielou's evenness. Faith-phylogenetic distance and Pielou evenness for putative refugia and recently disturbed samples are reported in the supplementary material (Supplementary Figure 2).

Shannon Diversity of the different paired sites

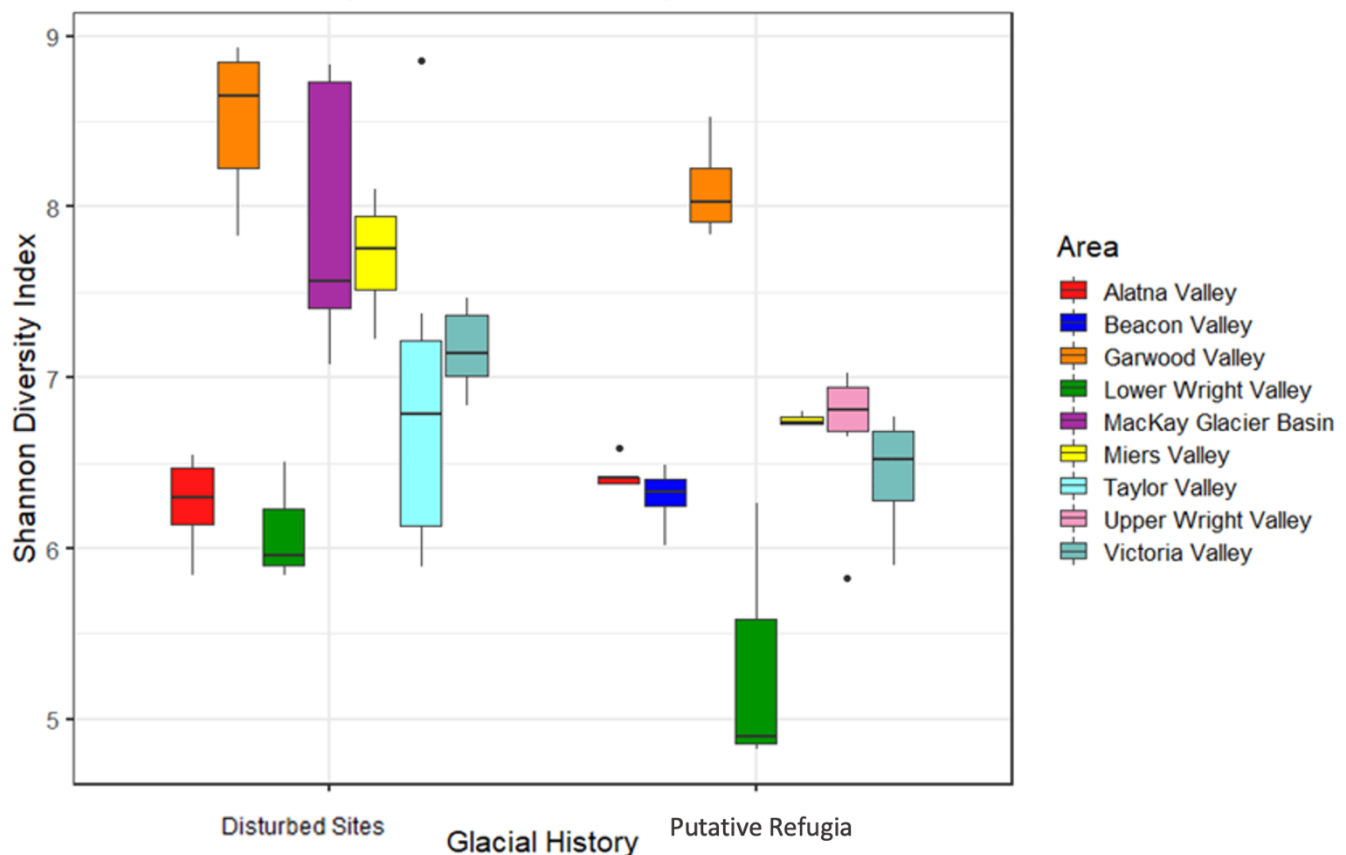


Figure 3. Shannon diversity of the different paired sites. Boxes are made up of all replicates from a single site and show the average diversity. Colors indicate which valley basin the site is located in.

Valley System	Name	Date collected	Geologic History	GPS Waypoints		Elevation (m)	Estimated Exposure Age	Citation	Biological Support of Site History
				Lat	Long				
Beacon Valley	Levy Cirque	2018-2019	Putative Refugia	77°47'50.04"S	160°36'55.72"E	1522	2.3 mya	Schäfer et al., 2000	Putative Refugia
	Lower Beacon Valley *	2018-2019	Putative Refugia	77°48'39.40"S	160°41'19.33"E	1017			
Alatna Valley	Battleship Promontory	2003-2004	Putative Refugia	76°55'20.46"S	161° 4'53.16"E	1241	5 mya	Diaz et al., 2020; Sugden and Denton, 2004; Margerison et al., 2005	Putative Refugia
	Lower Alatna Valley	1995-1996		76°53'40.74"S	161° 8'20.94"E	981			
Upper Wright Valley	Hawkings Cirque	2010-2011	Putative Refugia	77°30'36.69"S	160°34'42.95"E	1204	3 mya	Lewis et al., 2006	Putative Refugia
	Labyrinth	2005-2006	Putative Refugia	77°33'27.41"S	160°57'16.49"E	767			
Lower Wright Valley	Dais	2005-2006	Putative Refugia	77°32'51.96"S	161°14'11.10"E	801	4 mya	Lewis et al, 2006	Low biodiversity putative refugia
	Brownworth	2005-2006	Disturbed	77°26'19.08"S	162°43'43.69"E	241	26-5 kya	Hall et al., 2001	Disturbed
Mount Suess	Mount Suess	2010-2013	Disturbed	77° 2'11.86"S	161°42'36.43"E	706	25 - 5 kya	Jones et al., 2015	Disturbed
	Lower Mount Suess	2008-2009	Disturbed	77° 1'4.11"S	161°44'18.85"E	517			
Taylor Valley	Mountt Falconer	2001-2003	Disturbed	77°34'23.42"S	163° 9'30.95"E	731	9	Stuiver et al., 1981a	Disturbed
	Taylor Valley (Lake Fryxell)	2001-2003	Disturbed	77°36'27.70"S	163°15'2.46"E	9			
Miers Valley	Higher Miers Valley	2011-2012	Putative Refugia	78° 7'0.02"S	163°45'2.85"E	516	26-5 kya	Clayton-Greene et al., 1988; Joy et al., 2017	Putative Refugia
	Lake Miers	2011-2012	Putative Refugia	78° 6'2.15"S	163°48'32.83"E	167			
Garwood Valley	Higher Garwood Valley	2011-2012	Putative Refugia	78° 2'18.96"S	163°51'2.17"E	581	26-5 kya	Joy et al., 2017; Levy et al., 2013	Disturbed
	Lower Garwood Valley	2011-2012	Disturbed	78° 1'35.32"S	163°51'4.35"E	351			
Victoria Valley	Wall Valley	2010-2012	Putative Refugia	77°29'37.02"S	160°52'15.71"E	1617	120-300 ka	Bockheim and McLeod, 2013; Calkin, 1964a; McGowan et al., 2014	Putative Refugia
	Upper Victoria Valley	1993-1994	Disturbed	77°20'31.64"S	161°41'13.28"E	457			

Table 1. Site locations and classification. Location and classification for each site sampled for this study. Note that DNA yields from Lower Beacon Valley were too low to be included in the study. Geological history is based primarily off of exposure age estimates from literature. Citations refer to the primary sources with referenced exposure age estimates for that site.

3.4 Beta diversity

Community composition (measured in the Unweighted UniFrac distance between samples) was significantly different between all the sampled valley basins, and each sampled location was found to be significantly different from all other sampled sites in pairwise comparisons, with three sites as exceptions (Dais, Brownworth and Higher Miers Valley, $p < 0.05$ threshold, PERMANOVA). These three comparisons also had the lowest sample size out of all pairwise comparisons. Comparisons with other measures of community dissimilarity were largely congruent except for two exceptions when using the Weighted UniFrac distance to compare different valleys (between Alatna Valley and Upper Wright Valley as well as between Upper Wright Valley and Victoria Valley) ($p < 0.05$ threshold, PERMANOVA test, see Supplementary Table 2 for reported P-values). However, overall, the community composition of putative refugia sites was found to be significantly different from the communities of disturbed sites using all three metrics ($p = 0.001$ (all metrics), PERMANOVA test). Figure 4 shows the community composition of our samples in ordination space, measured in the Unweighted UniFrac, Weighted UniFrac and Bray-Curtis distance metrics.

Principal coordinate analysis of beta diversity

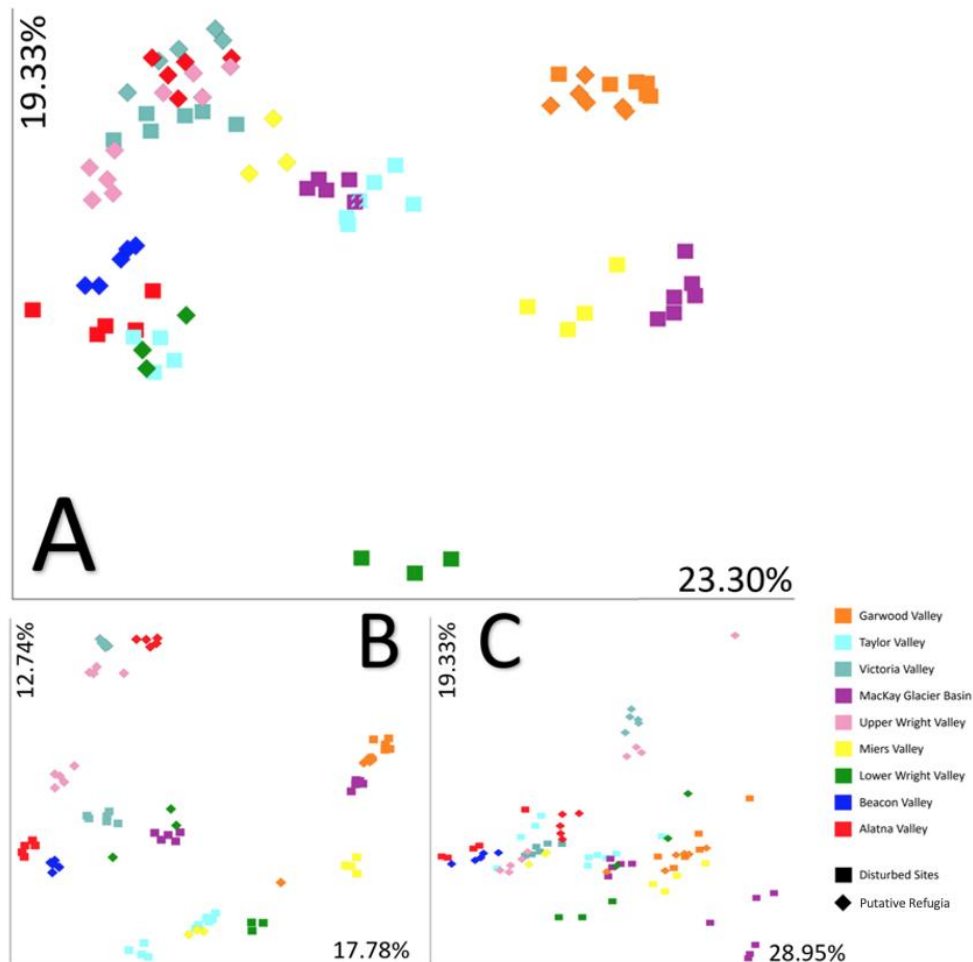


Figure 4. Principal coordinate analysis of beta diversity. Principal coordinate analysis of the beta diversity of each individual sample replicate for A) Unweighted UniFrac distance, B) Bray-Curtis distance and C) Weighted UniFrac distance. Axes labels indicate the weight of the principal coordinate. Samples taken from putative refugia sites are shown as diamond shapes, disturbed sites are shown as squares. Colors indicate the valley basin samples originate from.

3.5 Effects of environmental conditions

3.5.1 Distance to coast and elevation

Figure 5 shows the relationship between the distance of a sampling site to the nearest coastline and its elevation above sea level to the Shannon diversity index of the microbial community. The best models selected were largely congruent between the full dataset and refugia sites and disturbed sites separately, with increased distance to the coastline selected as the best predictive factor and being associated with a loss of diversity (between -0.015 and -0.02 decrease in Shannon index per kilometer distance from shore). However, this relationship was not found to be significant in the dataset of putative refugia sites or the dataset of recently disturbed sites separately, and was only significant when considering the full dataset ($P > 0.05$, linear regression).

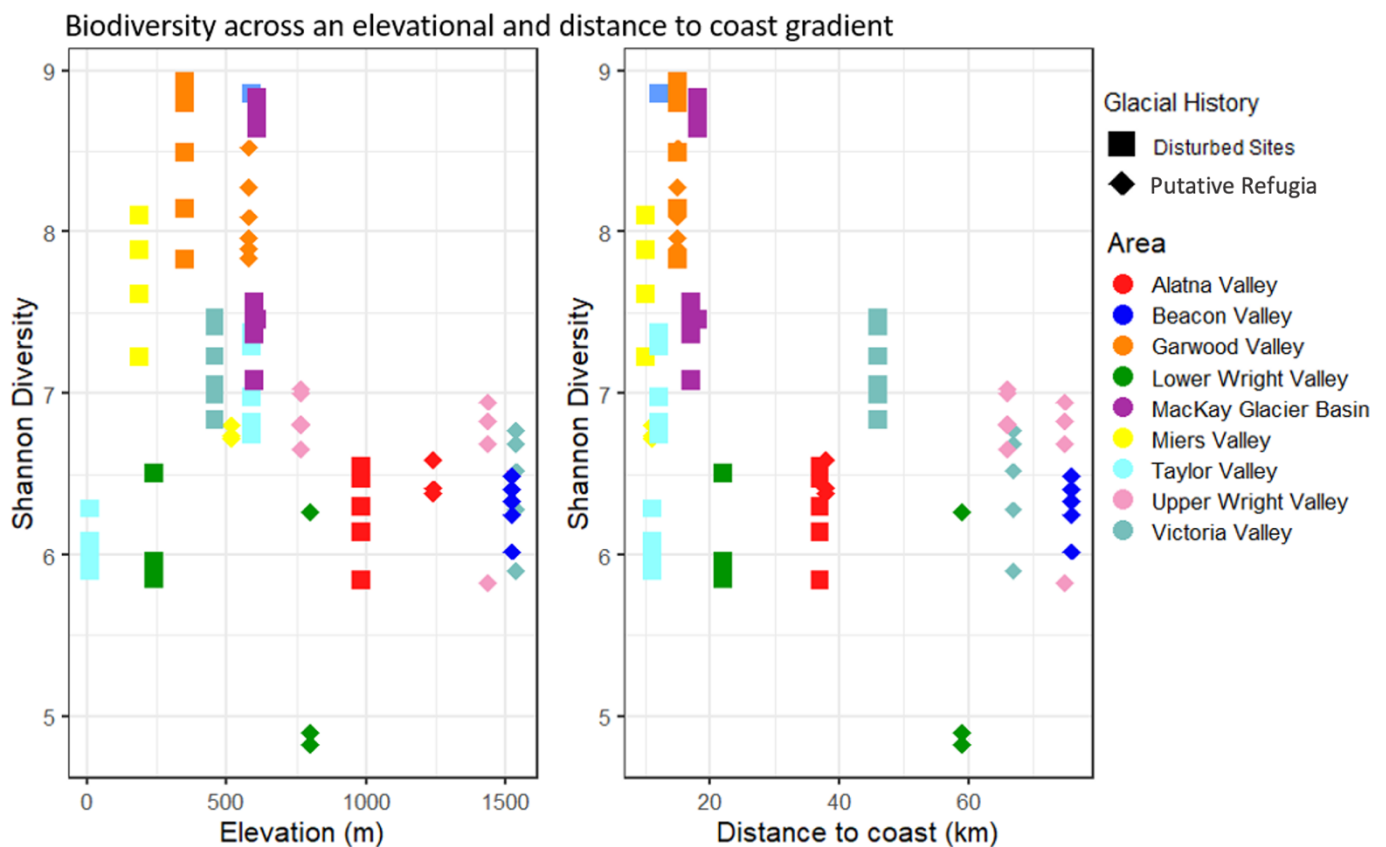


Figure 5. Biodiversity across an elevational and distance to coast gradient. Each individual sample replicates' Shannon diversity is displayed in relation to the location's elevation (left) and distance to coast (right). Diamond shaped points indicate putative refugia and squares indicate disturbed sites, while colors indicate the valley basin samples originate from.

3.5.2 Soil geochemistry

None of the investigated environmental variables were significantly different between the grouped putative refugia sites and the recently disturbed sites (see Supplementary Figure 3, $P > 0.05$, ANOVA) – full geochemical data are reported in Supplementary Table 3. The correlation matrices for all investigated environmental variables including elevation and distance to coast (see Supplementary Table 4) showed strong correlations between several of the key environmental drivers. A model selection approach was used to determine the best predictors of microbial diversity in our datasets. Although the correlative patterns were different for the three datasets used, the best predictive models were similar for both recently disturbed sites and all sites considered together. Soil organic matter content was retained as a factor in both of these models, though the effects of

organic matter content were only significant in the full dataset ($p = 0.023$, “Shatterthwaite’s t-test”) and not significantly predictive of alpha diversity in the dataset of recently disturbed sites ($p > 0.05$, linear regression). Figure 6 shows the organic matter content across the two datasets and its relation to alpha diversity. The model that best explained the diversity patterns found in recently disturbed sites further included the potassium content at the different sites; although, this factor also didn’t significantly influence diversity. Putative refugial sites did not fit in a single linear model, as many of the correlated variables such as distance to coast, elevation and organic matter content had a similar weight in the model selection. Model averaging of all best predictive values provided a model without any significant effects on alpha diversity that included distance to coast, elevation, organic matter content, gravimetric water content and potassium content. The best predictive single-variable model included only distance to coast, but its effect on diversity was not significantly different from zero ($p > 0.05$, linear regression). All resulting models only explained a small proportion of the dataset’s total variability (adjusted R-squared: 0.167 in the dataset of putative refugia, 0.193 in the dataset of recently disturbed sites and 0.265 in the full dataset). Salt and nitrate concentrations were not significantly correlated with biodiversity when considering the entire dataset or either group of sites separately. Putative refugia sites also did not have any higher average salt concentrations or nitrate content, regardless of their longer exposure age and higher elevation (see Figure 7). Any non-significant environmental predictors across sites are reported in Supplementary Figure 4.

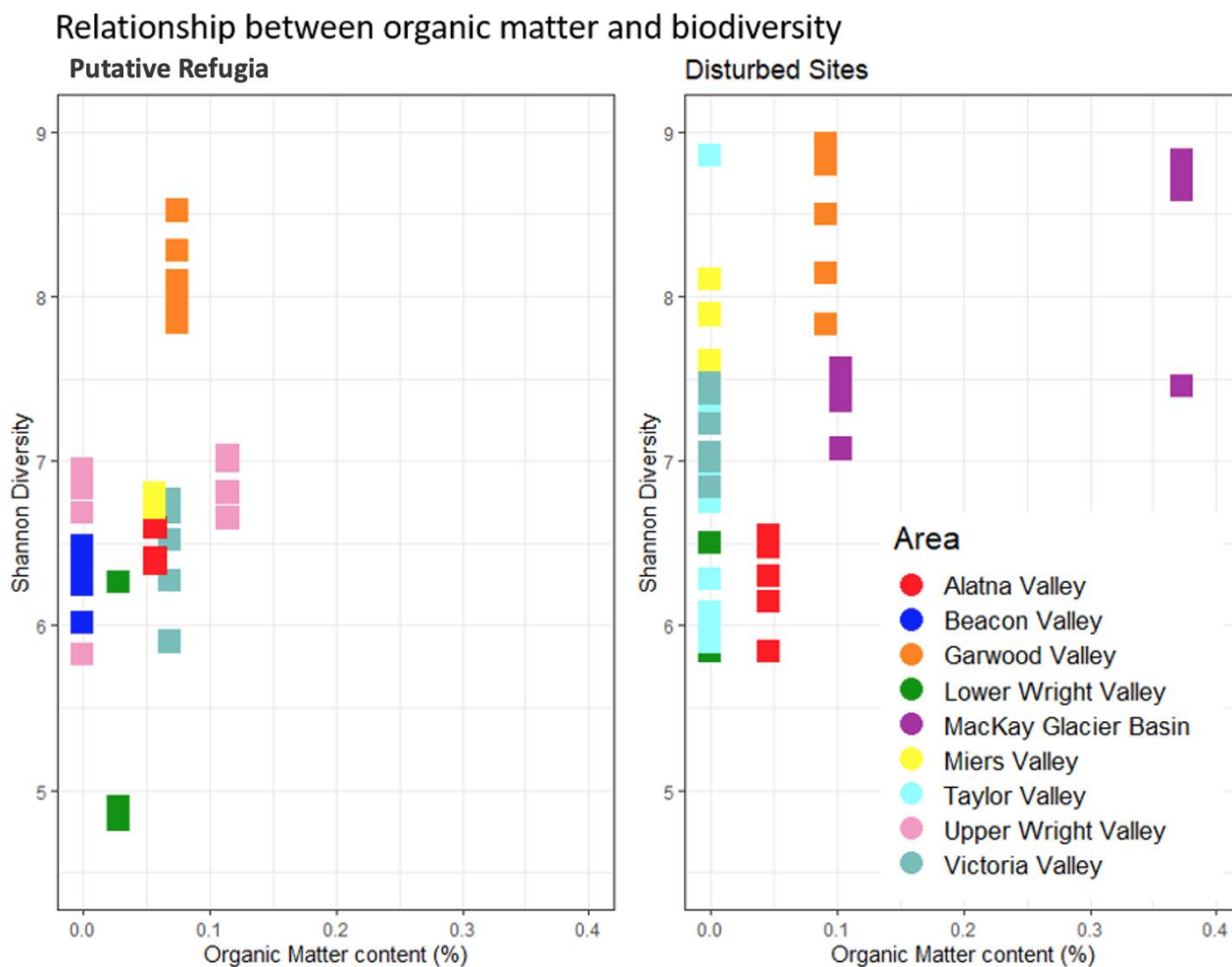


Figure 6. Relationship between organic matter and biodiversity. Individual sample replicates’ Shannon diversity is displayed in relation to the location’s organic matter content. Replicates from the same site share the same organic matter content. Putative refugia sites and disturbed sites are displayed separately. Colors indicate the valley basin samples originate from.

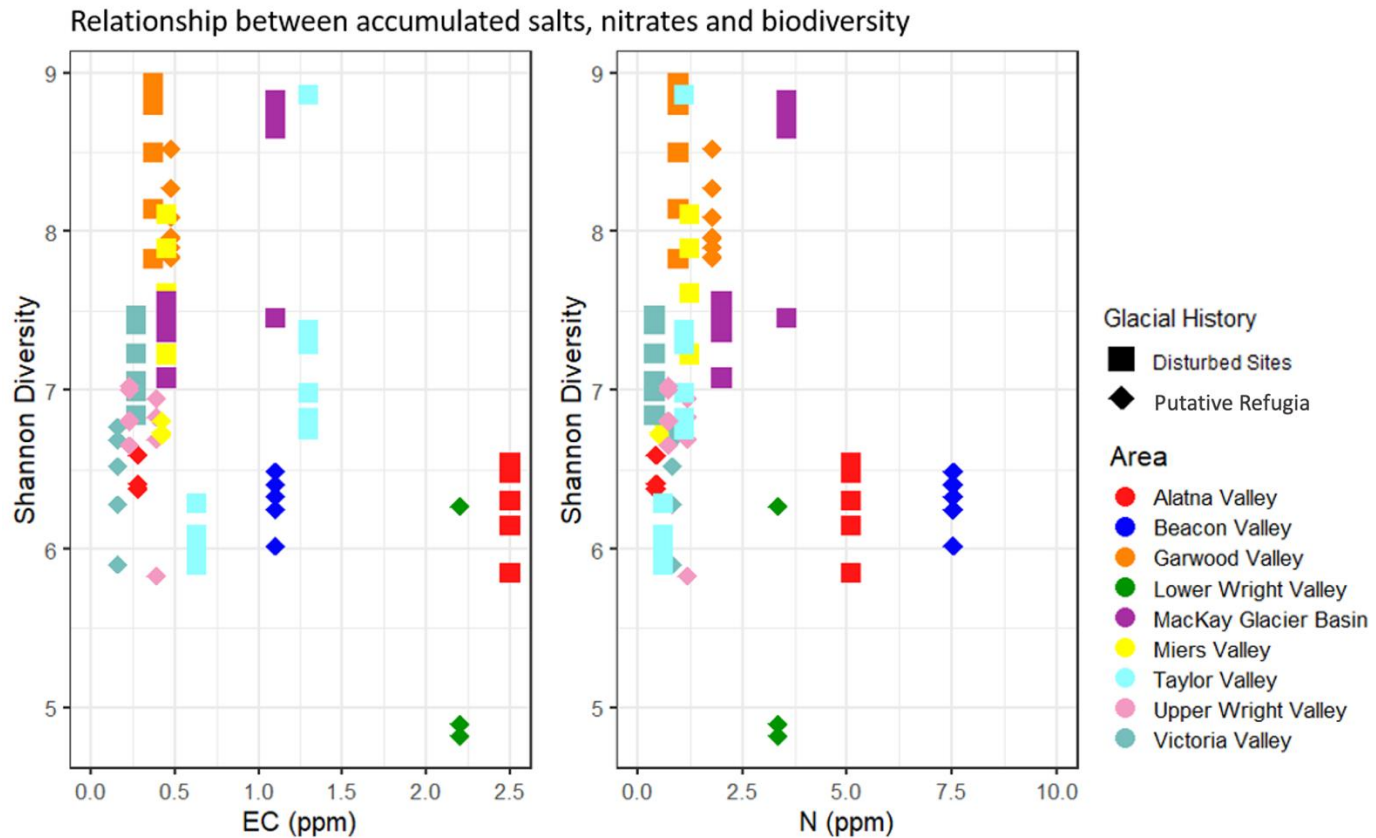


Figure 7. Relationship between accumulated salts (electrical conductivity), nitrate and biodiversity. Individual sample replicates Shannon diversity is displayed in relation to the location's salt (left) and nitrate (right) content. Replicates from the same site share the same concentration of salt and nitrate. Diamond shaped points indicate putative refugia, squares indicate disturbed sites. Colors indicate the valley basin samples originate from.

3.6 Drivers of community structure

3.6.1 Non-metric multidimensional scaling

Figure 8 shows the result of the non-metric multidimensional scaling (NMDS) plot. Community distance metrics are plotted using the Bray-Curtis metric, reflecting the non-phylogenetically weighted distribution of sampled communities in ordination space. Similar to the alpha diversity models, organic matter plays a large role in driving community structure. Elevation and distance from the coastline have a similar and strong effect on community composition, aligning with the ordination of several of our hypothesized refugia sites such as those in Alatna Valley, Upper Wright Valley and Victoria Valley. Nitrogen content and conductivity had a strong and equal effect on community composition, reflected mostly in the high salt content soils of the Brownworth samples taken from Lower Wright Valley. Geographically, we saw a reasonable effect of longitudinal distance which was inversely correlated compared to the distance from coastline. Latitudinal differences across these valleys did not play a strong role in shaping community structure. Figure 9A plots the first principal coordinate of the Unweighted UniFrac diversity metric against each site's latitude. Unweighted UniFrac distances were selected as the most informative beta diversity measurement for this figure as it considers the phylogenetic dissimilarity between different communities, thus including a signal of evolutionary history or dispersal limitation between the valleys and over the glaciation history of the sites. This further illustrates those sites, especially those classified as putative refugia, showing remarkably similar community composition over a large latitudinal range. Conversely, sites at higher elevation also had highly similar community

composition whereas the lower elevation disturbed sites display a larger variation on the first principal coordinate axis (Figure 9B).

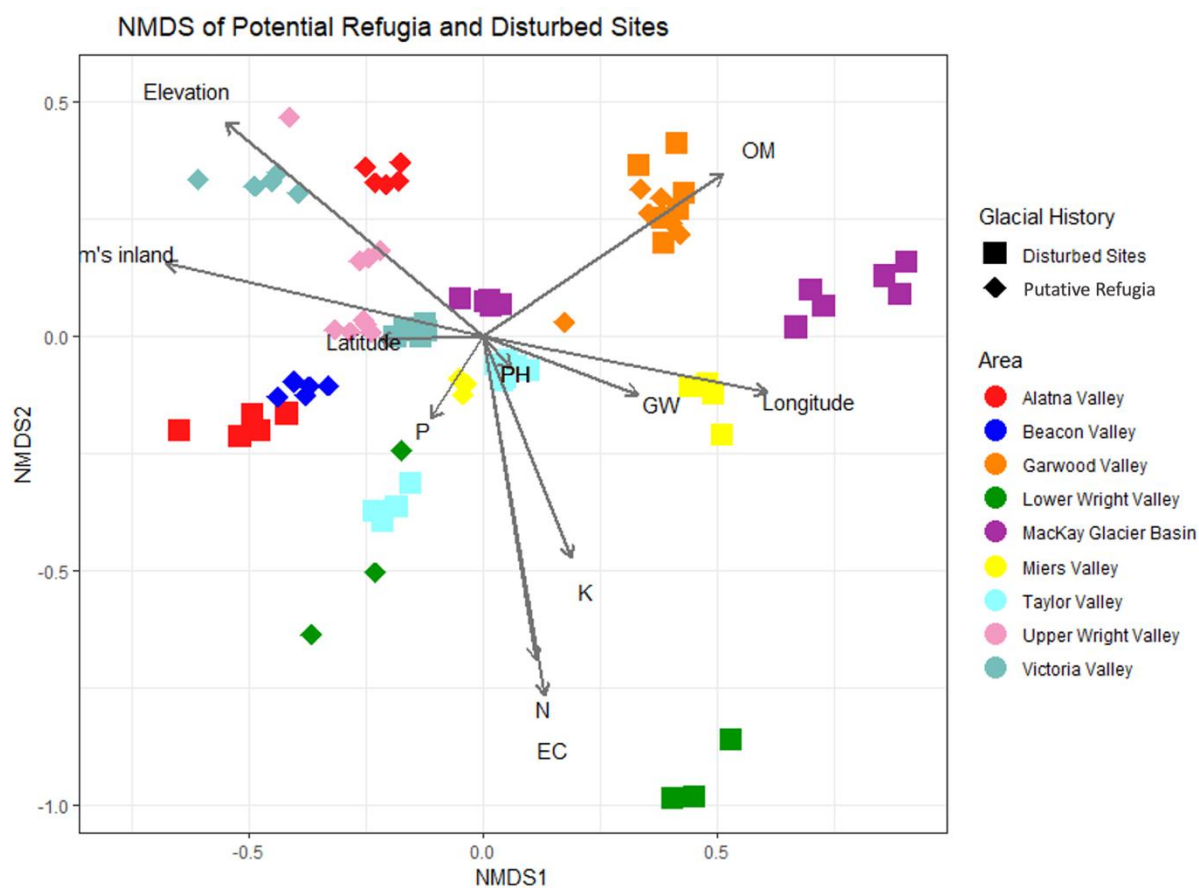


Figure 8. NMDS of putative refugia and disturbed sites. Non-metric multidimensional scaling plot of Bray-Curtis distances between sites. Each point represents a single sample replicate, with diamonds indicating putative refugia sites and squares indicating disturbed sites. Gray lines indicate the correlation between community composition and environmental variables, where longer lines indicate a stronger correlation. Point colors indicate the valley basin the sample originated from.

Community composition along a latitudinal and elevational gradient

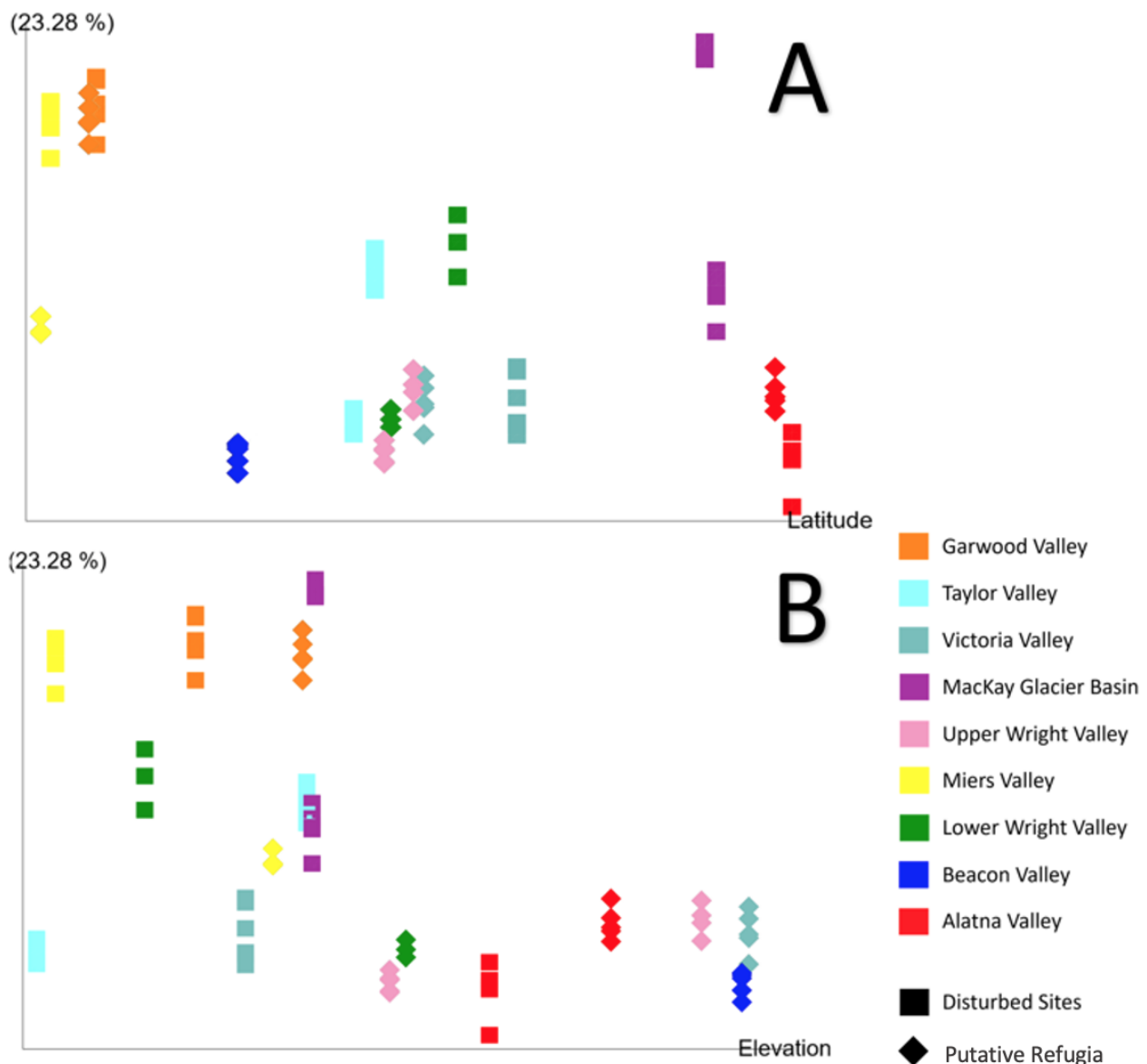


Figure 9. Community composition along a latitudinal and elevational gradient. Principal coordinate analysis of the Unweighted UniFrac diversity metric of each individual sample replicate with the principal coordinate with the highest weight on the vertical axis and latitude (top) or elevation (bottom) plotted on the horizontal axis. Samples taken from putative refugia sites are shown as diamond shapes, disturbed sites are shown as squares. Colors indicate the valley basin samples originate from.

3.6.2 Sample composition

The analysis of composition of microbes (ANCOM) comparing putative refugia sites to recently disturbed sites found eleven distinct ASVs that significantly differed in abundance between those two groups. Nine of these ASVs belonging to the Gemmatimonadaceae, Chitinophagaceae, Blastocatellaceae, Gaiellaceae, Armatimonadales, Nannocystaceae families, and the phylum Chloroflexi are found in significantly higher percentile abundances for putative refugia sites ($W = 4691, 4634, 4639, 4502, 4459, 4372,$ and 4607 , respectively). Two ASV, both from the order Pyrinomonadales, are associated with recently disturbed sites ($W=4711$ and 4455). Inter-valley comparisons resolved 517 ASVs (11%) as being significantly associated with a specific valley system. The full table

displaying individual taxa ANCOM scores is reported in the supplementary material (Supplementary Table 5).

4. Discussion

The MDV provide a unique ecosystem to study phylogeographic patterns left by geological cycles and millions of years of evolution in an environment that has undergone remarkably little change (Sugden, Bentley and Cofaigh, 2006). At the same time, it is well documented that populations of Antarctic biota have been strongly influenced by events in their geological and climate history and carry evolutionary traces of extinction during glacial advance or persistence in non-glaciated refugia (Rogers, 2007; Convey et al., 2009, 2020). In this study the microbial composition of several high elevation putative refugia and more recently disturbed low elevation sites were characterized to determine signatures of divergent glacial legacies on microbial communities.

Geological work has determined that some high elevation sites in continental Antarctica have remained exposed through periods of glacial expansion while low elevation sites were inundated by local glaciers or paleolakes, assumptions supported by Antarctic glacial models, isotope dating, and microarthropod and moss population genetic evidence (Marshall and Coetzee, 2000; Bennett et al., 2016; Biersma et al., 2018). Here, we have identified a biological line of evidence for the presence of such refugia in the Dry Valleys by characterizing the communities of microbial life at putative refugia sites.

4.1 Alpha diversity

While microbial community diversity was assumed be higher in refugia, comparable to high population genetic diversity in refugia found among other terrestrial organisms (De Wever et al. 2009, McGaughan et al. 2019), our findings present the opposite result. Shannon diversity indices were significantly lower in putative refugia sites than more recently disturbed sites in this study, while differences between the valley basins were more pronounced than between disturbed sites and putative refugia. None of the individual comparisons showed a higher diversity in the putative refugia site compared to a recently disturbed site in the same valley basin, except in Miers and Victoria Valley.

The results of our model selection to determine the effects of environmental factors on alpha diversity across the sample sites showed no clear predictive effects of site biogeochemistry or other environmental factors, such as elevation or distance to the coastline. While in all of the datasets, distance from coast was found to be a better predictor of decreased biodiversity than elevation, these were non-significant drivers of alpha biodiversity. These patterns were most pronounced in the full dataset, but are likely caused by the location of putative refugia sites, which are all located further from the coastline and at higher overall elevation than the disturbed sites. The geochemical soil properties most predictive of biodiversity were not congruent between putative refugia and disturbed sites, although organic matter content patterns are influenced by zero-inflation, caused by the very low contents found in these Antarctic soils and the limits of the detection test. The nitrate and salt concentrations of soils sampled in this study did not present a clear distinction between longer exposed, putative refugia sites and disturbed sites. This may indicate that many of the high elevation putative refugia investigated in this study are in fact experiencing periodic wetting at a similar frequency to the lower elevation disturbed sites. However, an overall pattern of decreasing alpha diversity with increasing nitrate and salt contents was observed in this study, consistent with the findings of Dragone et al., (2021).

Contrary to the widely accepted influence of soil moisture, water limitation did not seem to be a predictive factor in the diversity between the sites sampled in this study, while across the MDV ecosystem this is often suggested as the main constraint on microbial

diversity (Van Horn et al., 2014). Instead, organic matter content was the best predictor when modeling the lower elevation disturbed sites which are likely to have less constraints in water input due to periodic wetting by snow and glacier runoff, ephemeral streams (Takacs-Vesbach et al., 2010), and a closer water table, whereas water availability may be more strongly limited in higher elevation sites. These results are largely congruent with literature showing that while environmental factors are key drivers of soil habitability, their effects are difficult to generalize over large spatial ranges (Barrett et al., 2004; Feeser et al., 2018).

4.2 Similarities in community composition

Displaying community structure in ordination space did not result in a clear clustering of all disturbed and putative refugia sites across the whole dataset. Instead, several different clustering patterns can be identified which cast doubt on the classification of some of the selected disturbed and putative refugia sites. Strikingly, the factors displaying the strongest effect on community composition are those directly associated with refugia identification: elevation, distance from coast, and the accumulation of nitrate and salt compounds.

4.3 Within valley comparisons

Across all beta diversity indices, Garwood Valley samples clustered strongly together and were highly similar – although the distances between these communities were reported as significant. The two sites within Garwood Valley also exhibited equally high levels of biodiversity and very similar environmental conditions. Evidence exists for the inundation of our lower elevation site in Garwood Valley (Joy et al., 2017). While it is unclear whether higher Garwood Valley escaped inundation or another large disturbance in the relatively recent past, the community signature we describe is highly similar to the lower elevation site in the same valley basin and resembles other disturbed sites from this study.

Conversely, samples from the McKay Glacier region showed large community composition differences although the two sites are at very similar elevation, potentially driven by high organic matter content in only one of the sites. Other environmental variables such as phosphorus content and water availability also differed strongly between the two sites. Despite these differences, both sites exhibited relatively high biodiversity making it hard to draw specific conclusions about the glacial history of these sites, even though relatively recent glaciation has been proposed for this area (Jones et al., 2015).

In Miers Valley, Taylor Valley, Lower Wright Valley, and Alatna Valley the ordination plots showed high differentiation between the two sampled sites within each valley. These differences were less pronounced in the Unweighted UniFrac distance metric than in the other two beta diversity metrics. This can be partially explained by the large distance between the paired sample locations, such as in the case of Victoria Valley and Lower Wright Valley. However, this is not the case for other within-valley comparisons. Differentiation in Lower Wright Valley samples could be further explained due to large differences in elevation, distance from the coastline, and soil geochemistry, particularly the high concentrations of nitrates and salts found in the disturbed site. The two sites in Taylor Valley similarly have striking differences in local geochemistry and elevation. However, paired samples in Miers Valley exhibit highly similar environmental conditions, with the only difference being the hypothesized inundation of the lower elevation site through glacial lake formation during the LGM (20-10 kya) (Joy et al., 2017).

4.4 Putative Refugia sites

In each of the plots, a tentative cluster can be found of at least five core putative refugia sites: Battleship Promontory in Alatna Valley, Beacon Valley, both Upper Wright Valley sites and Wall Valley in Victoria Valley. These sites are spread across a large latitudinal range and have well established exposure age estimates that indicate all these sites have remained undisturbed for at least several million years. In each beta diversity metric the much lower elevation site in Lower Victoria Valley fell into this cluster, supporting the geological evidence that this site has likely been exposed for 120-300 kya, which is prior to the LGM but suggests more recent disturbance than the core putative refugia sites (Calkin, 1964a; Bockheim and McLeod, 2013; McGowan, Neil and Speirs, 2014). Given that this relatively recently disturbed site clustered with putative refugia sites for which much older exposure age estimates exist, perhaps any exposure age beyond the LGM is a benchmark for a climax community. As evidence, both sites in Victoria Valley clustered closer to the putative refugia sites despite marked dissimilarity resulting from differences in elevation and soil geochemistry.

Clustering patterns for the lower Alatna Valley site were similar to putative refugia, although here, no specific estimates of soil exposure ages have been published. As such, this is a tentative biological estimate that exposure ages in lower Alatna Valley may be similar to those found at Battleship Promontory. The lower elevation site in Alatna Valley was also found to have some of the highest salt and nitrate concentrations in this study, further evidence that these soils have been undisturbed for a considerable amount of time.

The community composition in high elevation sites from lower Wright and Miers Valleys clustered together with the five core putative refugia sites in the unweighted UniFrac principal coordinate plot, but had varying results using other beta diversity metrics. Regarding putative refugia in Miers Valley, the ambiguity of this classification can be attributed partially to it being located at the lowest elevation out of all the putative refugia sites and at the greatest distance from the rest of the high elevation sites in this study. The Dais site in lower Wright Valley matches the geochemical and elevational conditions of the other putative refugia sites, and geological evidence show this site has been relatively undisturbed for around 4 million years (Lewis et al., 2006). However, biodiversity was the lowest out of any investigated site in this study, potentially explaining the poor clustering with other putative refugia using both abundance-weighted diversity metrics.

Surprisingly, both the low and high elevation sites from Taylor Valley showed tentative clustering with the larger putative refugia site cluster, especially in the two reported UniFrac ordination plots. While Taylor Valley has been the focus of much study regarding the microbial life in the MDV, specific glacial histories are not known for some of the higher plateaus around its lake basins. Part of the within valley differences are shown to be explained by the large variation in phosphorus availability and pH between the two sites, yet the similarity of both these sites to several of the putative refugia for which most geological evidence exists is puzzling. The lower elevation site in Taylor Valley was almost certainly recently inundated by glacial lakes (Stuiver et al., 1981), while the recent history of interactions between Mt. Falconer and the Commonwealth Glacier is less clear.

4.5 Similarities across the MDV

Geographic distance plays a strong role in community composition. Beta diversity comparisons among paired sites found that each valley system was significantly distinct from other paired valley sites. Likewise, ANCOMs found significant differences in the dominant taxa among the paired sites of each valley system. While katabolic winds can

be a source of dispersal in this polar ecosystem, successful migration is still limited by distance, geographic barriers and local conditions (Nkem et al., 2006b; Archer et al., 2019). Interestingly, several of the hypothesized refugia sites in this study displayed highly similar microbial communities while being geographically separated. The area from Beacon Valley to Alatna Valley covers the majority of the MDV latitudinal variation, a horizontal distance of more than 100km with major geographic barriers. Yet all of the putative refugia sites identified across this region show remarkably similar communities in the context of their geographic distance.

The high degree of similarity between the putative refugia sites in Alatna Valley, Beacon Valley, Miers Valley, Victoria Valley, and both Upper Wright Valley pairs appears not to be structured by commonalities in environmental variables. Unsurprisingly, high elevation and large distance from the coastline are strong predictors of microbial community structure, but even sites with disparate elevations such as the putative refugia in Miers Valley and the lower Victoria Valley site display a strong similarity to the other putative refugia sites at higher elevations.

The similarity in community composition of the paired putative refugia and disturbed site in Garwood Valley present an argument that this site's community is not structured by the same legacy effects as the main cluster of putative refugia sites. The other main outlier in this comparison is formed by the low elevation site in Taylor Valley, which exhibits remarkable similarity to the cluster of refugia sites, and the identified putative refugia in Miers Valley which is not as similar to the other putative refugia sites as those within the observed cluster. It also provides increased evidence for the consideration of the lower Victoria Valley site as a putative refugia due to its high degree of similarity to other refugia over a large geographic range.

4.6 Taxonomic differences between refugia sites and disturbed sites

While metabarcoding approaches have made the description of taxa in extreme environments more accessible (Shu and HuangLi-Nan, 2022), functional information for many of these species is dependent on notoriously difficult culture-based approaches (Rappé and Giovannoni, 2003) and is thus frequently absent from the literature. The dominant families associated with putative refugia revealed by ANCOM are known to commonly have adaptations for low soil moisture, broad pH range, and high salt conditions. The Gemmatimonadota have been shown to be inversely correlated with soil moisture, indicating an adaptation for drier soils (DeBruyn et al., 2011). Meanwhile Blastocatellales are slightly acidophilic to neutrophilic mesophiles adapted to a broad range of temperatures and pH levels (Foesel, Rohde and Overmann, 2013). Nannocystaceae are considered halotolerant to halophilic, likely making them adaptable to older soils (Garcia and Müller, 2014). Chloroflexi are known to be photoautotrophic, a beneficial attribute given the low carbon input in the MDV (Hanada, 2014). One clear pattern that emerges from the ANCOMs is the presence of only one taxon associated with recently disturbed sites, bacteria of the order pyrinomonadales, however this order has yet to be assessed on a broad scale for its environmental amplitude. Eleven percent of all identified ASVs were associated with a specific valley system, indicating high endemicity of each valley community created by geographic barriers and limited dispersal.

5. Conclusion

This study has characterized putative high elevation refugia, capable of supporting microbial diversity comparable to model habitats from low elevation valley sites. As the Antarctic continent is extremely harsh and inhospitable, these islands of suitable soil habitat at high elevations could be considered important sites for management and conservation. If these refugia have insulated microbes from climate changes in the past, they

can potentially serve the same purpose in the face of climate warming. Likewise, the fact that refugia are isolated may provide resistance against invasive species that can more readily access low elevation soils that are closer to the coast and more vulnerable to invasion. Refugia may also serve to preserve highly adapted ancient genotypes whereas lower valley basin populations could undergo strong selection as a result of anthropogenic warming. The differentially abundant taxa found by an analysis of microbial composition further supports the hypothesis that higher elevation sites harbor bacterial lineages that might have unique ecosystem functions.

We show that sites with different glaciation histories have a distinct microbial community composition underscoring the importance of glacial legacies in this system. Putative refugia have distinctive microbial communities when compared to recently disturbed regions. Given the slightly different signal for distinct community compositions between the two glaciation histories using the weighted or unweighted beta diversity measurements, differential ASV abundance may play a stronger role in distinguishing community composition of putative refugia sites and recently disturbed sites. Community composition was most strongly influenced by elevation and location of the sampled area, but not soil geochemistry. While there may not be one distinct signature of microbial composition in Dry Valley refugia, we show that microbial community structure reflects the glacial history of the McMurdo Dry Valleys.

Supplementary Materials: Table S1: Shannon diversity comparisons; Table S2: P-tables for beta diversity distances; Table S3: Sample metadata and geochemical characteristics; Table S4: Environmental correlations; Table S5: Differential abundance of taxa; Figure S1: Alpha rarefaction; Figure S2: FaithPD and Evenness diversity; Figure S3: Environmental differences between putative refugia and disturbed sites; Figure S4: Shannon diversity and environmental variables.

Author Contributions: Conceptualization, A.J., J.J. and B.J.; methodology, A.J., J.J., J.C.; software, A.J., J.J., J.C.; formal analysis, A.J., J.J.; resources, B.J., J.C.; data curation, A.J., J.J.; writing—original draft preparation, A.J. and J.J.; writing—review and editing, A.J., J.J., J.C. and B.J.; funding acquisition, J.C. and B.J. All authors have read and agreed to the published version of the manuscript.

Funding: This research was funded by the National Science Foundation, grant number OPP-1637708 for Long Term Ecological Research. Additional funding was provided by the College of Life Sciences to the Department of Plant and Wildlife Sciences and the Department of Biology, Brigham Young University, Provo, Utah.

Informed Consent Statement: “Not applicable.”

Data Availability Statement: Data for this study is available at [10.6073/pasta/3380695f50e8f3527c12aba416e86b1f](https://doi.org/10.6073/pasta/3380695f50e8f3527c12aba416e86b1f)

Conflicts of Interest: The authors declare no conflict of interest. The funders had no role in the design of the study; in the collection, analyses, or interpretation of data; in the writing of the manuscript; or in the decision to publish the results.”

References

- Anderson, J. B. *et al.* (2014) “Ross Sea paleo-ice sheet drainage and deglacial history during and since the LGM,” *Quaternary Science Reviews*. Elsevier Ltd, 100, pp. 31–54. doi: 10.1016/j.quascirev.2013.08.020.
- Andriuzzi, W. S. *et al.* (2018) “Observed trends of soil fauna in the Antarctic Dry Valleys: early signs of shifts predicted under climate change,” *Ecology*, 99(2), pp. 312–321. doi: 10.1002/ecy.2090.
- Archer, S. D. J. *et al.* (2019) “Airborne microbial transport limitation to isolated Antarctic soil habitats,” *Nature Microbiology*, 4(6), pp. 925–932. doi: 10.1038/s41564-019-0370-4.
- Barrett, J. E. *et al.* (2004) “Variation in biogeochemistry and soil biodiversity across spatial scales in a polar desert ecosystem,” *Ecology*, 85(11), pp. 3105–3118. doi: 10.1890/03-0213.
- Barrett, J. E. *et al.* (2008) “Decline in a dominant invertebrate species contributes to altered carbon cycling in a low-diversity soil ecosystem,” *Global Change Biology*, 14(8), pp. 1734–1744. doi: 10.1111/j.1365-2486.2008.01611.x.
- Benjamini, Y. and Hochberg, Y. (1995) “Controlling the False Discovery Rate : A Practical and Powerful Approach to Multiple Testing,” *Journal of the Royal Statistical Society*, 57(1), pp. 289–300. doi: 10.1111/j.2517-6161.1995.tb02031.x.

- Bennett, K. R. *et al.* (2016) "High levels of intraspecific genetic divergences revealed for Antarctic springtails: evidence for small-scale isolation during Pleistocene glaciation," *Biological Journal of the Linnean Society*. Blackwell Publishing Ltd, 119(1), pp. 166–178. doi: 10.1111/bij.12796.
- Biersma, E. M. *et al.* (2018) "Molecular data suggest long-term in Situ Antarctic persistence within Antarctica's most speciose plant genus, *Schistidium*," *Frontiers in Ecology and Evolution*, 6(77). doi: 10.3389/fevo.2018.00077.
- Bockheim, J. G. (1990) "Soil development rates in the Transantarctic Mountains," *Geoderma*, 47, pp. 59–77. doi: 10.1016/0016-7061(90)90047-D.
- Bockheim, J. G. and McLeod, M. (2013) "Glacial geomorphology of the Victoria Valley System, Ross Sea Region, Antarctica," *Geomorphology*. Elsevier B.V., 193, pp. 14–24. doi: 10.1016/j.geomorph.2013.03.020.
- Bokulich, N. A. *et al.* (2018) "Optimizing taxonomic classification of marker-gene amplicon sequences with QIIME 2's q2-feature-classifier plugin," *Microbiome*. Microbiome, 6(90), pp. 1–17. doi: 10.1186/s40168-018-0470-z.
- Bolyen, E. *et al.* (2019) "Reproducible, interactive, scalable and extensible microbiome data science using QIIME 2," *Nature Biotechnology*, 37(8), pp. 852–857. doi: 10.1038/s41587-019-0209-9.
- Bottos, E. M. *et al.* (2020) "Abiotic factors influence patterns of bacterial diversity and community composition in the Dry Valleys of Antarctica," *FEMS Microbiology Ecology*. Oxford University Press, 96(5), pp. 1–12. doi: 10.1093/FEM-SEC/FIAA042.
- Bray, R. J. and Curtis, J. T. (1957) "An Ordination of the Upland Forest Communities of Southern Wisconsin," *Ecological Monographs*, 27(4), pp. 325–349. doi: 10.2307/1942268.
- Burkins, M. B. *et al.* (2000) "Origin and distribution of soil organic matter in Taylor Valley, Antarctica," *Ecology*, 81(9), pp. 2377–2391. doi: 10.1890/0012-9658(2000)081[2377:OADOSO]2.0.CO;2.
- Calkin, P. E. (1964a) *Geomorphology and Glacial Geology of the Victoria Valley System, Southern Victoria Land, Antarctica*.
- Calkin, P. E. (1964b) "Glacial geology of the mount gran area, southern Victoria land, Antarctica," *Bulletin of the Geological Society of America*, 75(10), pp. 1031–1036. doi: 10.1130/0016-7606(1964)75[1031:GGOTMG]2.0.CO;2.
- Callahan, B. J. *et al.* (2016) "DADA2: High resolution sample inference from Illumina amplicon data," *Nature Methods*, 13(7), pp. 581–583. doi: 10.1007/978-1-4614-9209-2_118-1.
- Campbell, I. B. *et al.* (1998) "Soil Environment of the McMurdo Dry Valleys, Antarctica," in Prisco, J. C. (ed.) *Ecosystem Dynamics in a Polar Desert: the McMurdo Dry Valleys, Antarctica, Volume 72*. American Geophysical Union, pp. 297–322. doi: 10.1029/AR072.
- Caruso, T. *et al.* (2019) "Nematodes in a polar desert reveal the relative role of biotic interactions in the coexistence of soil animals," *Communications Biology*. Springer US, 2(1). doi: 10.1038/s42003-018-0260-y.
- Cary, S. C. *et al.* (2010) "On the rocks: the microbiology of Antarctic Dry Valley soils," *Nature Reviews Microbiology*, 8(2), pp. 129–138. doi: 10.1038/nrmicro2281.
- Clayton-Greene, J. M., Hendy, C. H. and Hogg, A. G. (1988) "Chronology of a wisconsin age proglacial lake in the Miers Valley, Antarctica," *New Zealand Journal of Geology and Geophysics*, 31(3), pp. 353–361. doi: 10.1080/00288306.1988.10417781.
- Convey, P. *et al.* (2009) "Exploring biological constraints on the glacial history of Antarctica," *Quaternary Science Reviews*, 28(28), pp. 3035–3048. doi: 10.1016/j.quascirev.2009.08.015.
- Convey, P. *et al.* (2020) "Refuges of Antarctic diversity," in Oliva, M. and Ruiz-Fernández, J. (eds.) *Past Antarctica*. Academic Press, pp. 181–200. doi: 10.1016/b978-0-12-817925-3.00010-0.
- DeBruyn, J. M. *et al.* (2011) "Global biogeography and quantitative seasonal dynamics of Gemmatimonadetes in soil," *Applied and Environmental Microbiology*, 77(17), pp. 6295–6300. doi: 10.1128/AEM.05005-11.
- Denton, G. H. *et al.* (1984) "Late Tertiary history of the Antarctic ice sheet: evidence from the Dry Valleys," *Geology*, 12(5), pp. 263–267. doi: 10.1130/0091-7613(1984)12<263:LTHOTA>2.0.CO;2.
- Denton, G. H. *et al.* (1993) "East Antarctic Ice Sheet Sensitivity to Pliocene Climatic Change from a Dry Valleys Perspective," *Geografiska Annaler: Series A, Physical Geography*, 75(4).
- Diaz, M. A. *et al.* (2018) "Aeolian Material Transport and Its Role in Landscape Connectivity in the McMurdo Dry Valleys, Antarctica," *Journal of Geophysical Research: Earth Surface*, 123(12), pp. 3323–3337. doi: 10.1029/2017JF004589.
- Diaz, M. A. *et al.* (2020) "Geochemistry of aeolian material from the McMurdo Dry Valleys, Antarctica: Insights into Southern Hemisphere dust sources," *Earth and Planetary Science Letters*. Elsevier B.V., 547, p. 116460. doi: 10.1016/j.epsl.2020.116460.
- Doran, P. T. *et al.* (2002) "Valley floor climate observations from the McMurdo dry valleys, Antarctica, 1986–2000," *Journal of Geophysical Research Atmospheres*, 107(D24), pp. 1–12. doi: 10.1029/2001JD002045.
- Dragone, N. B. *et al.* (2021) "Exploring the Boundaries of Microbial Habitability in Soil," *Journal of Geophysical Research: Biogeosciences*, 126(6), pp. 1–16. doi: 10.1029/2020JG006052.
- Dreesens, L. L., Lee, C. K. and Craig, C. S. (2014) "The distribution and identity of edaphic fungi in the McMurdo dry valleys," *Biology*, 3(3), pp. 466–483. doi: 10.3390/biology3030466.
- Elberling, B. *et al.* (2006) "Distribution and dynamics of soil organic matter in an Antarctic dry valley," *Soil Biology and Biochemistry*, 38(10), pp. 3095–3106. doi: 10.1016/j.soilbio.2005.12.011.
- Faith, D. P. (1992) "Conservation evaluation and phylogenetic diversity," *Biological Conservation*, 61, pp. 1–10. doi: 10.1016/0003-2697(75)90168-2.
- Feeser, K. L. *et al.* (2018) "Local and regional scale heterogeneity drive bacterial community diversity and composition in a polar desert," *Frontiers in Microbiology*, 9, pp. 1–14. doi: 10.3389/fmicb.2018.01928.

- Foesel, B. U., Rohde, M. and Overmann, J. (2013) "Blastocatella fastidiosa gen. nov., sp. nov., isolated from semiarid savanna soil - The first described species of Acidobacteria subdivision 4," *Systematic and Applied Microbiology*. Elsevier GmbH, 36(2), pp. 82–89. doi: 10.1016/j.syapm.2012.11.002.
- Fountain, A. G. *et al.* (2014) "The McMurdo Dry Valleys: A landscape on the threshold of change," *Geomorphology*. Elsevier B.V., 225(C), pp. 25–35. doi: 10.1016/j.geomorph.2014.03.044.
- Fountain, A. G. *et al.* (2016) "The Impact of a Large-Scale Climate Event on Antarctic Ecosystem Processes," *BioScience*, 66(10), pp. 848–863. doi: 10.1093/biosci/biw110.
- Freckman, D. W. and Virginia, R. A. (1993) "Extraction of nematodes from Dry Valley Antarctic soils," *Polar Biology*, 13(7), pp. 483–487. doi: 10.1007/BF00233139.
- Freckman, D. W. and Virginia, R. A. (1998) "Soil Biodiversity and Community Structure in the McMurdo Dry Valleys, Antarctica," in Priscu, J. C. (ed.) *Ecosystem Dynamics in a Polar Desert: the McMurdo Dry Valleys, Antarctica, Volume 72*. American Geophysical Union, pp. 323–335. doi: 10.1029/AR072.
- Fretwell, P. *et al.* (2013) "Bedmap2: Improved ice bed, surface and thickness datasets for Antarctica," *Cryosphere*, 7, pp. 375–393. doi: 10.5194/tc-7-375-2013.
- Garcia, R. and Müller, R. (2014) "The Family Nannocystaceae," in Rosenberg, E. *et al.* (eds.) *The Prokaryotes: Deltaproteobacteria and Epsilonproteobacteria*. Berlin, Heidelberg: Springer Berlin Heidelberg, pp. 213–229. doi: 10.1007/978-3-642-39044-9_305.
- Geyer, K. M. *et al.* (2013) "Environmental controls over bacterial communities in polar desert soils," *Ecosphere*, 4(10), pp. 1–17. doi: 10.1890/ES13-00048.1.
- Geyer, K. M. *et al.* (2017) "Primary productivity as a control over soil microbial diversity along environmental gradients in a polar desert ecosystem," *PeerJ*, 2017(7), pp. 1–18. doi: 10.7717/peerj.3377.
- Graly, J. A. *et al.* (2018) "Polar desert chronologies through quantitative measurements of salt accumulation," *Geology*, 46(4), pp. 351–354. doi: 10.1130/G39650.1.
- Halberstadt, A. R. W., Kowalewski, D. E. and DeConto, R. M. (2022) "Reconciling persistent sub-zero temperatures in the McMurdo Dry Valleys, Antarctica, with Neogene dynamic marine ice-sheet fluctuations," *Geology*, XX(XX), pp. 7–11. doi: 10.1130/g49664.1.
- Hall, B. L., Denton, G. H. and Overturf, B. (2001) "Glacial Lake Wright, a high-level antarctic lake during the LGM and early holocene," *Antarctic Science*, 13(1), pp. 53–60. doi: 10.1017/S0954102001000086.
- Hanada, S. (2014) "The Phylum Chloroflexi, the Family Chloroflexaceae, and the Related Phototrophic Families Oscillochloridaceae and Roseiflexaceae," in Rosenberg, E. *et al.* (eds.) *The Prokaryotes: Other Major Lineages of Bacteria and The Archaea*. Berlin, Heidelberg: Springer Berlin Heidelberg, pp. 515–532. doi: 10.1007/978-3-642-38954-2_165.
- Van Horn, D. J. *et al.* (2013) "Factors Controlling Soil Microbial Biomass and Bacterial Diversity and Community Composition in a Cold Desert Ecosystem: Role of Geographic Scale," *PLoS ONE*, 8(6), p. e66103. doi: 10.1371/journal.pone.0066103.
- Van Horn, D. J. *et al.* (2014) "Soil microbial responses to increased moisture and organic resources along a salinity gradient in a polar desert," *Applied and environmental microbiology*, 80(10), pp. 3034–3043. doi: 10.1128/AEM.03414-13.
- Jiang, X. *et al.* (2022) "Limits to the three domains of life: lessons from community assembly along an Antarctic salinity gradient," *Extremophiles*. Springer Japan, 26(1). doi: 10.1007/s00792-022-01262-3.
- Jones, R. S. *et al.* (2015) "Rapid Holocene thinning of an East Antarctic outlet glacier driven by marine ice sheet instability," *Nature Communications*. Nature Publishing Group, 6. doi: 10.1038/ncomms9910.
- Joy, K. *et al.* (2017) "Cosmogenic evidence for limited local LGM glacial expansion, Denton Hills, Antarctica," *Quaternary Science Reviews*. Elsevier Ltd, 178, pp. 89–101. doi: 10.1016/j.quascirev.2017.11.002.
- Katoh, K. *et al.* (2002) "MAFFT: A novel method for rapid multiple sequence alignment based on fast Fourier transform," *Nucleic Acids Research*, 30(14), pp. 3059–3066. doi: 10.1093/nar/gkf436.
- Kenkel, N. C. and Orloci, L. (1986) "Applying metric and nonmetric multidimensional scaling to ecological studies: some new results," *Ecology*, 67(4), pp. 919–928. doi: 10.2307/1939814.
- Keppel, G. *et al.* (2012) "Refugia: identifying and understanding safe havens for biodiversity under climate change," *Global Ecology and Biogeography*. John Wiley & Sons, Ltd, 21(4), pp. 393–404. doi: 10.1111/j.1466-8238.2011.00686.x.
- Kozich, J. J. *et al.* (2013) "Development of a dual-index sequencing strategy and curation pipeline for analyzing amplicon sequence data on the miseq illumina sequencing platform," *Applied and Environmental Microbiology*, 79(17), pp. 5112–5120. doi: 10.1128/AEM.01043-13.
- Lee, C. K. *et al.* (2012) "The Inter-Valley Soil Comparative Survey: the ecology of dry valley edaphic microbial communities," *ISME Journal*, 6(5), pp. 1046–1057. doi: 10.1038/ismej.2011.170.
- Lee, C. K. *et al.* (2019) "Biotic interactions are an unexpected yet critical control on the complexity of an abiotically driven polar ecosystem," *Communications Biology*, 2(62), pp. 1–10. doi: 10.1038/s42003-018-0274-5.
- Levy, J. S. *et al.* (2013) "Garwood Valley, Antarctica: A new record of last glacial maximum to holocene glaciofluvial processes in the McMurdo Dry Valleys," *Bulletin of the Geological Society of America*, 125(9–10), pp. 1484–1502. doi: 10.1130/B30783.1.
- Lewis, A. R. *et al.* (2006) "The age and origin of the Labyrinth, western Dry Valleys, Antarctica: Evidence for extensive middle Miocene subglacial floods and freshwater discharge to the Southern Ocean," *Geology*, 34(7), pp. 513–516. doi: 10.1130/G22145.1.

- Lozupone, C. A. *et al.* (2007) "Quantitative and qualitative β diversity measures lead to different insights into factors that structure microbial communities," *Applied and Environmental Microbiology*, 73(5), pp. 1576–1585. doi: 10.1128/AEM.01996-06.
- Lozupone, C. and Knight, R. (2005) "UniFrac: A new phylogenetic method for comparing microbial communities," *Applied and Environmental Microbiology*, 71(12), pp. 8228–8235. doi: 10.1128/AEM.71.12.8228-8235.2005.
- Magalhães, C. *et al.* (2012) "At Limits of Life: Multidisciplinary Insights Reveal Environmental Constraints on Biotic Diversity in Continental Antarctica," *PLoS ONE*, 7(9). doi: 10.1371/journal.pone.0044578.
- Mandal, S. *et al.* (2015) "Analysis of composition of microbiomes: a novel method for studying microbial composition," *Microbial Ecology in Health and Disease*, 26(27663), pp. 1–7. doi: 10.3402/mehd.v26.27663.
- Margerison, H. R. *et al.* (2005) "Cosmogenic ^3He concentrations in ancient flood deposits from the Coombs Hills, northern Dry Valleys, East Antarctica: Interpreting exposure ages and erosion rates," *Earth and Planetary Science Letters*, 230(1–2), pp. 163–175. doi: 10.1016/j.epsl.2004.11.007.
- Marshall, D. J. and Coetzee, L. (2000) "Historical biogeography and ecology of a Continental Antarctic mite genus, *Maudheimia* (Acari, Oribatida): evidence for a Gondwanan origin and Pliocene-Pleistocene speciation," *Zoological Journal of the Linnean Society*. Linnean Society, 129, pp. 111–128.
- McGaughan, A. *et al.* (2011) "Extreme glacial legacies: A synthesis of the Antarctic springtail phylogeographic record," *Insects*, 2(2), pp. 62–82. doi: 10.3390/insects2020062.
- McGaughan, A. *et al.* (2019) "Genome-wide SNP data reveal improved evidence for Antarctic glacial refugia and dispersal of terrestrial invertebrates," *Molecular Ecology*, 28(22), pp. 4941–4957. doi: 10.1111/mec.15269.
- McGowan, H. A., Neil, D. T. and Speirs, J. C. (2014) "A reinterpretation of geomorphological evidence for Glacial Lake Victoria, McMurdo Dry Valleys, Antarctica," *Geomorphology*, 208, pp. 200–206. doi: 10.1016/j.geomorph.2013.12.005.
- Nkem, J. N. *et al.* (2006a) "Salt tolerance and survival thresholds for two species of Antarctic soil nematodes," *Polar Biology*, 29(8), pp. 643–651. doi: 10.1007/s00300-005-0101-6.
- Nkem, Johnson N. *et al.* (2006b) "Wind dispersal of soil invertebrates in the McMurdo Dry Valleys, Antarctica," *Polar Biology*, 29(4), pp. 346–352. doi: 10.1007/s00300-005-0061-x.
- Oksanen, J. *et al.* (2022) "vegan: Community Ecology Package. R package." Available at: <https://cran.r-project.org/package=vegan>, 2.6-2.
- Pielou, E. C. (1966) "The measurement of diversity in different types of biological collections," *Journal of Theoretical Biology*, 13, pp. 131–144. doi: 10.1016/0022-5193(66)90013-0.
- Preacher, K. J., Curran, P. J. and Bauer, D. J. (2006) "Computational tools for probing interactions in multiple linear regression, multilevel modeling, and latent curve analysis," *Journal of Educational and Behavioral Statistics*, 31(4), pp. 437–448. doi: 10.3102/10769986031004437.
- Prentice, M. L., Kleman, J. L. and Stroeven, A. P. (1998) "The Composite Glacial Erosional Landscape of the Northern McMurdo Dry Valleys: Implications for Antarctic Tertiary Glacial History, in Ecosystem Processes in a Polar Desert: The McMurdo Dry Valleys, Antarctica," in Priscu, J. C. (ed.) *Ecosystem Dynamics in a Polar Desert: the McMurdo Dry Valleys, Antarctica, Volume 72*. American Geophysical Union, pp. 1–38. doi: 10.1029/AR072.
- Price, M. N., Dehal, P. S. and Arkin, A. P. (2010) "FastTree 2 - Approximately maximum-likelihood trees for large alignments," *PLoS ONE*, 5(3), pp. 1–10. doi: 10.1371/journal.pone.0009490.
- Quast, C. *et al.* (2013) "The SILVA ribosomal RNA gene database project: Improved data processing and web-based tools," *Nucleic Acids Research*, 41, pp. 590–596. doi: 10.1093/nar/gks1219.
- R Core Team (2002) "R: A language and environment for statistical computing. R Foundation for Statistical Computing." Vienna, Austria. Available at: <https://www.r-project.org/>.
- Rappé, M. S. and Giovannoni, S. J. (2003) "The Uncultured Microbial Majority," *Annual Review of Microbiology*, 57, pp. 369–394. doi: 10.1146/annurev.micro.57.030502.090759.
- Rogers, A. D. (2007) "Evolution and biodiversity of Antarctic organisms: A molecular perspective," *Philosophical Transactions of the Royal Society B: Biological Sciences*, 362(1488), pp. 2191–2214. doi: 10.1098/rstb.2006.1948.
- Schafer, J. M. *et al.* (1999) "Cosmogenic noble studies in the oldest landscape on earth: Surface exposure ages of the Dry Valleys, Antarctica," *Earth and Planetary Science Letters*, 167(3–4), pp. 215–226. doi: 10.1016/S0012-821X(99)00029-1.
- Schäfer, J. M. *et al.* (2000) "The oldest ice on Earth in Beacon Valley, Antarctica: New evidence from surface exposure dating," *Earth and Planetary Science Letters*, 179(1), pp. 91–99. doi: 10.1016/S0012-821X(00)00095-9.
- Schoenau, J. J. and Karamanos, R. E. (1993) "Sodium Bicarbonate Extractable P, K, and N," *Soil Sampling and Methods of Analysis*, pp. 51–58. doi: 10.1201/9781420005271.ch8.
- Shannon, C. E. (1948) "A Mathematical Theory of Communication," *Bell System Technical Journal*, 27(3), pp. 379–423. doi: 10.1002/j.1538-7305.1948.tb01338.x.
- Shu, W.-S. and HuangLi-Nan (2022) "Microbial diversity in extreme environments.," *Nature Reviews Microbiology*, 20(4), pp. 219–235. doi: 10.1038/s41579-021-00648-y.
- Smith, J. J. *et al.* (2006) "Bacterial diversity in three different antarctic cold desert mineral soils," *Microbial Ecology*, 51(4), pp. 413–421. doi: 10.1007/s00248-006-9022-3.
- Sohlenius, B. and Boström, S. (2008) "Species diversity and random distribution of microfauna in extremely isolated habitable patches on Antarctic nunataks," *Polar Biology*. Springer, 31(7), pp. 817–825. doi: 10.1007/s00300-008-0420-5.
- Soler-Membrives, A. *et al.* (2017) "Genetic signature of last glacial maximum regional refugia in a circum-antarctic sea spider," *Royal Society Open Science*, 4(10), pp. 1–16. doi: 10.1098/rsos.170615.

- Spector, P. and Balco, G. (2021) "Exposure-age data from across Antarctica reveal mid-Miocene establishment of polar desert climate," *Geology*, 49(1), pp. 91–95. doi: 10.1130/g47783.1.
- Stevens, M. I. *et al.* (2007) "Phylogeographic structure suggests multiple glacial refugia in northern Victoria Land for the endemic Antarctic springtail *Desoria klovestadi* (Collembola, Isotomidae)," *Zoologica Scripta*, 36(2), pp. 201–212. doi: 10.1111/j.1463-6409.2006.00271.x.
- Stuiver, M. *et al.* (1981) "Oxygen Isotope Ratios of Antarctic Glacier Permafrost and in Glacice Ice," in *Antarctic Research Series: Dry Valley Drilling Project*, pp. 131–139.
- Sugden, D. and Denton, G. (2004) "Cenozoic landscape evolution of the Convoy Range to Mackay Glacier area, Transantarctic Mountains: Onshore to offshore synthesis," *Bulletin of the Geological Society of America*, 116(7–8), pp. 840–857. doi: 10.1130/B25356.1.
- Sugden, D. E., Bentley, M. J. and Cofaigh, C. Ó. (2006) "Geological and geomorphological insights into Antarctic ice sheet evolution," *Philosophical Transactions of the Royal Society A: Mathematical, Physical and Engineering Sciences*, 364, pp. 1607–1625. doi: 10.1098/rsta.2006.1791.
- Sugden, D. E., Marchant, D. R. and Denton, G. H. (1993) "The Case for a Stable East Antarctic Ice Sheet : The Background," *Geografiska Annaler. Series A, Physical Geography*, 75(4), pp. 151–154.
- Takacs-Vesbach, C. *et al.* (2010) "Factors promoting microbial diversity in the McMurdo Dry Valleys, Antarctica," *Life in Antarctic Deserts and other Cold Dry Environments*, pp. 221–257. doi: 10.1017/cbo9780511712258.008.
- Virginia, R. A. and Wall, D. H. (1999) "How soils structure communities in the Antarctic Dry Valleys," *BioScience*, 49(12), pp. 973–983. doi: 10.1525/bisi.1999.49.12.973.
- Walkley, A. and Black, A. I. (1934) "An examination of the DEGTJAREFF method for determining soil organic matter, and a proposed modification of the chromic acid titration method," *Soil Science Society of America Journal*, 37(1), pp. 29–38.
- De Wever, A. *et al.* (2009) "Hidden levels of phylodiversity in Antarctic green algae: Further evidence for the existence of glacial refugia," *Proceedings of the Royal Society B: Biological Sciences*, 276(1673), pp. 3591–3599. doi: 10.1098/rspb.2009.0994.