

Article

Palmitic Acid Impedes Extravillous Trophoblast Activity by Increasing MRP1 Expression and Function

Yunali Ashar¹, Qiuxu Teng¹, John N.D. Wurpel¹, Zhe-Sheng Chen¹ and Sandra E. Reznik^{1,2,*}¹ Department of Pharmaceutical Sciences, St. John's University, Queens, NY² Departments of Pathology and Obstetrics and Gynecology and Women's Health, Albert Einstein College of Medicine, Bronx, NY

*Corresponding author: rezniks@stjohns.edu; Tel.: 718-990-2634; Fax: 718-990-1877

Abstract: Normal function of placental extravillous trophoblasts (EVTs), which are responsible for uteroplacental vascular remodeling, is critical for adequate delivery of oxygen and nutrients to the developing fetus and normal fetal programming. Proliferation and invasion of spiral arteries by EVT depends upon adequate levels of folate. Multidrug resistance-associated protein 1 (MRP1), which is an efflux transporter, is known to remove folate from these cells. We hypothesized that palmitic acid increases MRP1-mediated folate removal from EVTs, thereby interfering with EVTs' role in early placental vascular remodeling. HTR-8/SVneo and Swan-71 cells, first trimester human EVTs, were grown in the absence or presence of 0.5 mM and 0.7 mM palmitic acid, respectively, for 72 h. Palmitic acid increased *ABCC1* gene expression and MRP1 protein expression in both cell lines. The rate of folate efflux from the cells into the media increased with a decrease in migration and invasion functions in the cultured cells. Treatment with N-acetyl cysteine (NAC) prevented the palmitic acid mediated upregulation of MRP1 and restored invasion and migration in the EVTs. Finally, in an *ABCC1* knockout subline of Swan-71 cells, there was a significant increase in invasion and migration functions. The novel finding in this study that palmitic acid increases MRP1-mediated folate efflux provides a missing link that helps to explain how maternal consumption of saturated fatty acids compromises the *in-utero* environment.

Keywords: extravillous trophoblast; placenta; saturated fatty acid; *in-utero* environment; MRP1

1. Introduction

Normal fetal growth and development depends upon normal structure and function of the placenta [1]. During the first trimester, invasive extravillous trophoblasts (EVTs) obstruct the maternal arterioles, preventing the premature onset of blood flow into the intervillous space. If this process is unsuccessful, an increase in oxygen levels leads to oxidative stress and injury to the placental villi, which in turn often results in obstetrical complications [1]. Aberrant EVT function, especially reduced migration and invasion into the uterus, may lead to preeclampsia [2].

ABC transporters are membrane proteins that utilize the energy released by the hydrolysis of ATP to transport substrates out of cells. [3–6]. In humans, 49 ABC transporters have been identified, comprising seven subfamilies designated ABC-A through ABC-G [3,5–7]. In the placental chorionic villi, the transporters present in the apical membrane of the chorionic villi syncytiotrophoblasts are positioned to efflux substrates towards the maternal circulation while the transporters present in the basolateral membrane of villous trophoblasts efflux the substrates towards the fetal circulation [8,9]. ABC transporters are also present in the EVTs, which express ABCA1, ABCA5 and ABCC1/MRP1 [10, 11]. Folic acid, which is required for normal migration and invasion of EVTs [12] is a major substrate of MRP1 [7].

In previous work, we have shown that cultured human EVTs incubated with palmitic acid have increased cell death, decreased total antioxidant capacity and increased lipid peroxidation [13]. We have also shown that consumption of a high fat diet leads to

placental inflammatory vasculopathy in mice and programs metabolic disease in their offspring, both of which are resolved with NAC [14,15]. Human consumption of a high fat diet during pregnancy compromises the intrauterine environment and leads to oxidative stress, epigenetic changes, dyslipidemia and inflammation [16,17], resulting in altered placental development and function [18,19]. These placental abnormalities are linked to pregnancy complications such as preeclampsia, intrauterine growth restriction (IUGR), gestational diabetes (GDM), preterm birth and stillbirth [19,20]. Preeclampsia, IUGR and GDM can, in turn, affect fetal programming [18,19]. Here, we report that palmitic acid increases MRP1-mediated folate efflux in first trimester EVT, thus identifying a missing link that helps to explain how palmitic acid compromises the *in-utero* environment.

2. Materials and Methods

2.1. Reagents

The HTR-8/SVneo cell line was provided by Dr. Charles Graham (Queens's University, ON, Canada). Swan-71 cell line were provided by Dr. Gil Mor (Yale University, CT, USA). JEG-3 and BeWo cell lines were obtained from ATCC (Manassas, VA, USA). DMEM, RPMI and fatty acid-free bovine serum albumin (BSA) were purchased from VWR International Inc. (Bridgeport, NJ, USA). EMEM and F-12K media were obtained from ATCC. Palmitic and linoleic acids were obtained from TCI Chemicals (Portland, OR, USA). FBS was purchased from Atlanta Biologicals (Flowery Branch, GA, USA). Monoclonal antibodies against ABCB1, ABCG2, ABCC1, ABCC7 and GAPDH were obtained from Cell Signaling Technology (Danvers, MA, USA). N-acetylcysteine (NAC), trypsin and Alexa Fluor 488 conjugated goat anti-rabbit IgG secondary antibody were obtained from Thermo Fisher Scientific Inc. (Rockford, IL, USA). [3H]-folic acid, diammonium salt (50 μ Ci) was a product of Moravек Biochemicals, Inc (Brea, CA, USA). Corning transwell with permeable polycarbonate membrane inserts was purchased from Thermo Fisher Scientific Inc. The plasmid for ABCC1 for the CRISPR/Cas9 study was purchased from VectorBuilder (Chicago, IL, USA). Mouse embryonic fibroblasts, 2-mercaptoethanol and sodium pyruvate were obtained from Thermo Fisher Scientific Inc. Mitomycin C, heparin sodium salt and M2 medium were purchased from Sigma Aldrich. Recombinant Human FGF-4 was obtained from Peprotech (Cranbury, NJ, USA). EDTA, tetrasodium tetrahydrate salt and Matrigel matrix were purchased from MilliporeSigma (Burlington, MA, USA). The plasmid for ABCC1 gene knockout was built and purchased from VectorBuilder. In addition, the plasmid extraction kit was purchased from Thermo Fisher Scientific Inc.

2.2. Cell Lines and Cell Culture

Placental first trimester extravillous trophoblast cell lines HTR-8/SVneo and Swan-71 were used for *in-vitro* studies. HTR-8/SVneo cells were derived from first trimester human extravillous trophoblasts by transfection with the gene encoding for Simian virus 40 large T antigen for immortalization. RPMI supplemented with 10% FBS and 1% penicillin streptomycin (PS) was used to culture HTR-8/SVneo cells. Swan-71 cells were derived from first trimester human extravillous trophoblasts by infection with human telomerase reverse transcriptase (hTERT) expressing virus. These cells were cultured in DMEM containing 10% FBS and 1% penicillin streptomycin (PS). JEG-3 and BeWo cells, which are human choriocarcinoma cell lines, were also used for *in-vitro* studies. The JEG-3 cell line was cultured in EMEM with 10% FBS and 1% penicillin streptomycin (PS) and the BeWo cell line was grown in F-12K medium. All cells were incubated at 37°C and 5% CO₂. HTR-8/SVneo and Swan-71 cell lines represent placental extravillous trophoblast cells, whereas JEG-3 and BeWo cell lines represent placental syncytiotrophoblasts. For the CRISPR/Cas9 gene knockout experiment, cells were incubated in Opti-MEM medium during transfection. The ABCC1 knockout Swan-71 subline was cultured in DMEM with 10% FBS and was further supplemented with 0.6 mg/ml of G418.

2.3. Conjugation of Palmitic and Linoleic Acids with BSA

To increase the solubility of sodium palmitate and sodium linoleate in cell culture media, we conjugated sodium palmitate and sodium linoleate with fatty acid-free bovine serum albumin (BSA). Solutions of 200 mM sodium palmitate and sodium linoleate were prepared in 50% ethanol at 55°C. These solutions were diluted to 50 mM using 10% fatty acid-free BSA and conjugation was carried out for 2 h at 40°C in a shaking water bath. The final conjugate was sterile filtered and stored at -20°C. The conjugated palmitic and linoleic acids are stable at -20°C for 2 months.

2.4. Cell Viability Assay

MTT assay was carried out to determine the non-cytotoxic concentrations of palmitic and linoleic acids in the HTR-8/SVneo, Swan-71, JEG-3 and BeWo cell lines. Cells were seeded at 5×10^3 in 96-well plates with a final volume of 180 μ L per well and incubated at 37°C in the presence of 5% CO₂ for 24 h. After 24 h, the cells were incubated with or without palmitic and linoleic acids for 72 h. MTT (2 mg/ml) was added to the cells, and the cells were further incubated for 4 h. Subsequently, the supernatant was aspirated and 100 μ L of DMSO was added to each well. The absorbance was read at 570 nm in an Opsy microplate reader (Dynex Technologies, Chantilly, VA, USA). The viability of untreated cells was set as 100%. For each cell line, the concentration at which palmitic and linoleic acids showed 80% cell viability was selected for further studies. The MTT assays were performed in triplicate and each assay was run three times.

2.5. Immunoblotting Assay

Western blot was performed to determine the expression ABCB1, ABCG2, ABCC1 and ABCC7 in the four placental cell lines. Whole cell lysates were prepared by using RIPA buffer after treatment with or without palmitic and linoleic acids for 0, 24, 48 or 72 h. Protein content was determined using BCA assay and 40 μ g protein aliquots were resolved by SDS-PAGE and transferred to PVDF membranes. The membranes were left at 4°C for overnight incubation with primary monoclonal antibodies. The membranes were then washed with TBST and incubated with HRP-conjugated secondary antibody for 1.5 h. Bands were detected using an ECL detection system (LI-COR Biosciences, Lincoln, NE, USA), followed by analysis using ImageJ software (Bethesda, MD, USA).

2.6. RT-qPCR Assay

Polymerase chain reaction (PCR) was carried out to determine if there was a change in mRNA levels of the *ABCC1* gene in HTR/SVneo and Swan-71 cells after incubation with palmitic acid. Reverse transcription of total RNA into cDNA was carried out using SuperScriptII reverse transcriptase (Life Technologies, Inc., Carlsbad, CA, USA) using the manufacturer's instructions. Quantitative PCR was performed using SYBR Select Master Mix (Life Technologies, Inc.) in an AriaMx (Agilent Technologies, Santa Clara, CA, USA) real time qPCR system. The data were calculated by the comparative $\Delta\Delta$ CT method and presented as fold change compared to the control.

2.7. [³H]-Folate Efflux Assay

An efflux assay was carried out to determine the effect of MRP1 upregulation on folate efflux. Cells were pretreated with palmitic acid for 0, 12, 24, 48 or 72 h and then incubated with [³H]-folate for 6 h. Cells were washed with ice-cold PBS and lysed at different time points (0, 30, 60 and 120 min). Radioactivity of the lysates was measured with a Packard TRI-CARB 1900CA liquid scintillation analyzer.

2.8. Immunofluorescence Assay

An immunofluorescence assay was performed to determine the expression and localization of ABCC1 in HTR-8/SVneo and Swan-71 cell lines before and after treatment with palmitic acid. Cells were seeded at 1×10^4 cells per well in 24-well plates overnight.

The cells were then treated with 0.5 mM or 0.7 mM palmitic acid, respectively, for 0, 24, 48 or 72 h. Cells were fixed using 4% formaldehyde and permeabilized using Triton X-100. Blocking was carried out with 6% BSA and was followed by incubation with monoclonal anti-MRP1 antibody. Subsequently, the cells were incubated with 1 mL Alexa flour 488-conjugated goat anti-rabbit IgG per well for 2 h. The nuclei were counterstained by DAPI at room temperature for 15 min. Fluorescent images were taken using an EVOS FL auto fluorescence microscope (Life Technologies Corporation, Carlsbad, CA, USA).

2.9. Transwell Migration Assay

To test palmitic acid's effect on EVT migration, palmitic acid treated HTR-8/SVneo and Swan-71 cells (75×10^3) were added to each transwell in serum-free media, whereas media with 10% FBS was added to the lower chamber. After 24 h, the cells were fixed with 4% formaldehyde and the non-migrated cells were removed from the transwell with a cotton swab. Each transwell was further incubated with 0.5% crystal violet. Brightfield images were taken using an EVOS FL auto fluorescence microscope. Cells were then trypsinized and counted with a hemocytometer.

2.10. Transwell Invasion Assay

For the invasion assay, the transwells were coated with Matrigel diluted in serum free media (1:25) overnight at room temperature. Subsequently, 75×10^3 cells were added to each transwell. The steps described above were then followed.

2.11. ABCC1 Gene Knockout by Crispr/Cas9

The *ABCC1* gene was knocked out using a CRISPR/Cas9 system to create an *ABCC1* knockout subline of the Swan-71 cell line. The gRNA of the human *ABCC1* targeting vector contains a specific 20 bp guide sequence: 5'-GTTGACAATCTCCCCGACCG-3'. Fugene6 transfection reagent (Promega, Madison, WI) was used to transfect the *ABCC1* targeting vector into Swan-71 cells, following the manufacturer's instructions. An aliquot of 1×10^3 cells in DMEM with 10% FBS were plated in a 100 mm petri dish and incubated overnight. The plasmid (8 μ g) was added to 376 μ l of OPTI-MEM medium. This mixture was then incubated at room temperature for 30 min and added to the cell medium for a 48-h incubation at 37°C and 5% CO₂. The transfected cells were then rinsed with DPBS and incubated with selection medium containing 0.6 mg/ml G418 for 14 days. The limited dilution method was used to obtain single colonies of transfected cells, which were developed for further studies. Expression of the MRP1 protein was measured using western blotting to confirm the knockout of *ABCC1*.

2.12. Statistical Analysis

The experimental results are presented as the mean of three or more individual experiments. Deviations from the mean are presented as mean \pm SD. ANOVA was used to determine statistical significance of $P < .05$.

3. Results

3.1. Cytotoxicity of Linoleic and Palmitic Acids in JEG-3, BeWo, HTR-8 and Swan-71 Cells

Before investigating the role of ABC transporters in the placenta, the non-cytotoxic concentrations of palmitic and linoleic acids in the four placental cell lines were determined using an MTT assay. As shown in Figure 1A, there was 80% survival with exposure to 0.5 mM palmitic acid in JEG-3, BeWo and HTR-8/SVneo cells and 80% survival with exposure to 0.7 mM palmitic acid in Swan-71 cells. On treatment with linoleic acid, 80% cell survival was obtained at 1 mM in all four cell lines (Figure 1B). Therefore, 1mM linoleic acid was used in all four cell lines, 0.5 mM palmitic acid was used for JEG-3, BeWo and HTR-8/SVneo cells and 0.7 mM palmitic acid was used for experiments with Swan-71 cells.

3.2. Expression of ABC Transporters in JEG-3, BeWo, HTR-8/SVneo and Swan-71 Cells

The expression of the four most studied ABC transporters PgP, BCRP, MRP1 and MRP7, was evaluated in the four placental cell lines using western blotting. There was no expression of PgP or MRP7 in any of the cell lines (Supplemental Figures 1B and D, respectively). BCRP was expressed in the BeWo cell line (Supplemental Figure 1A). Importantly, MRP1 was expressed in all four cell lines (Supplemental Figure 1C). Hence, the effect of palmitic and linoleic acids on MRP1 was studied in all four cell lines. The modulation of BCRP by both fatty acids was also studied in the BeWo cell line.

3.3. Palmitic Acid Increases MRP1 Expression in HTR-8/SVneo and Swan-71 Cells

The modulation of BCRP in BeWo cells and MRP1 in JEG-3, BeWo, HTR-8/SVneo and Swan-71 cells by linoleic and palmitic acids was evaluated using western blotting. Cells were treated with the above-mentioned concentrations of linoleic and palmitic acids and the expression of the ABC transporters was evaluated at different time points from 0-72 h. Treatment with linoleic acid did not alter the expression of BCRP in the BeWo cell line or the expression of MRP1 in any of the four cell lines (Supplemental Figures 1G-I). Treatment with palmitic acid did not increase BCRP expression in the BeWo cell line or MRP1 expression in the JEG-3 or BeWo choriocarcinoma cell lines (Supplemental Figures 1E and F). Importantly, as shown in Figures 1C-1E, there was an increase in the expression of MRP1 in HTR-8/SVneo and Swan-71 cell lines upon treatment with 0.5 mM and 1 mM palmitic acid, respectively, with expression directly related to time of exposure. Based on these results, these two cell lines, which represent first trimester extravillous trophoblast cells, were selected for further studies.

3.4. Palmitic Acid Increases ABCC1 Gene Expression in HTR-8/SVneo and Swan-71 Cells

To determine the effect of palmitic acid treatment on *ABCC1* gene expression, qRT-PCR analysis was performed. As shown in Figure 1G, after treatment with palmitic acid for 72 h, there was a 2.5-fold upregulation in *ABCC1* gene expression in HTR-8/SVneo cells compared to untreated control cells. Similarly, in Swan-71 cells, treatment with palmitic acid caused an approximately 3-fold increase in expression of the *ABCC1* gene (Figure 1H). These results indicate that in addition to increasing in MRP1 protein expression, palmitic acid increases the expression of the *ABCC1* gene.

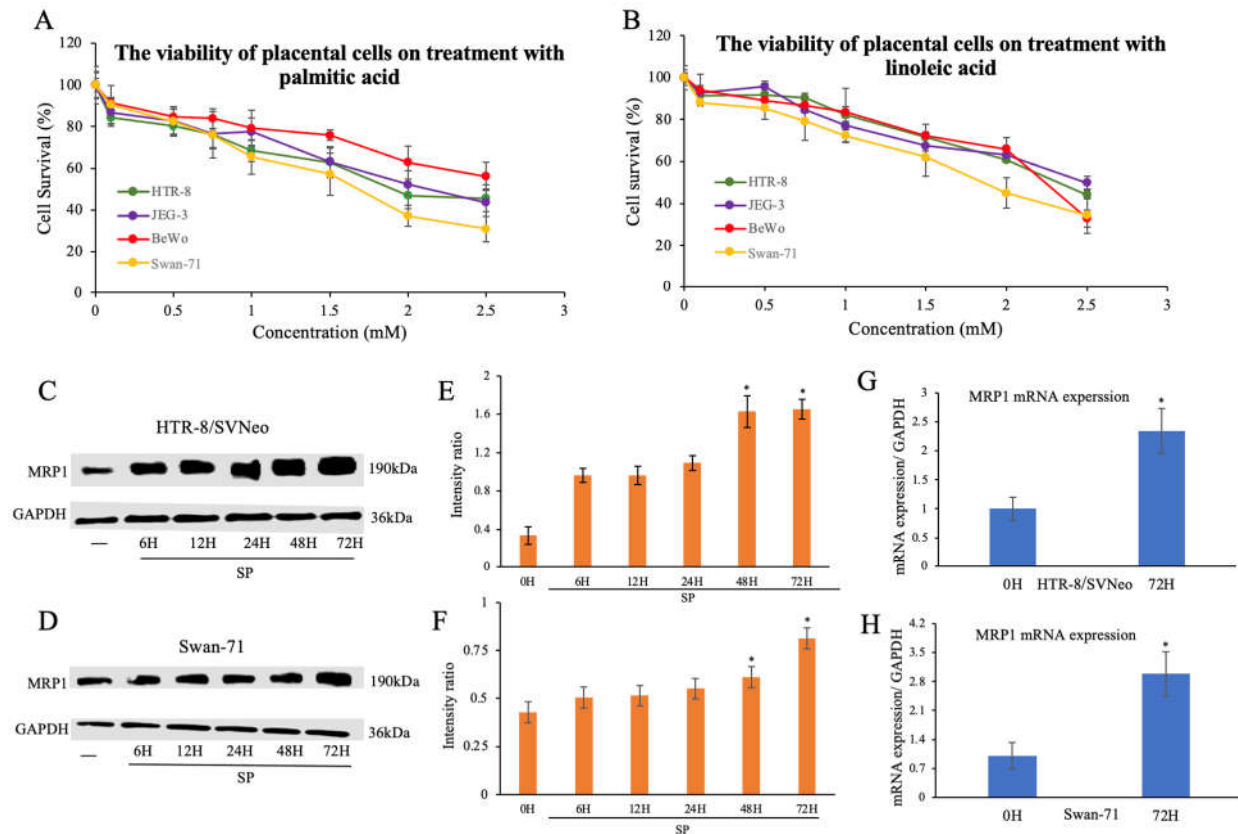


Figure 1. Effect of palmitic and linoleic acids on cytotoxicity, MRP1 protein levels and *ABCC1* gene expression in placental cell lines. Cell viability vs concentration curves of HTR-8/SVneo, JEG-3, BeWo and Swan-71 cells upon treatment with palmitic (A) and linoleic acid (B), determined by efflux assay. Effect of 0.5 mM palmitic acid on MRP1 protein expression in HTR8/SVNeo (C) and Swan-71 cells (D) determined by western blotting. Grayscale ratios were calculated with the help of ImageJ (E, F). *ABCC1* mRNA expression upon treatment with 0.5 mM palmitic acid in HTR8/SVNeo (G) and Swan-71 cells (H) determined by RT-qPCR. Mean values were obtained from three independent experiments and error bars indicate SD. * $P < .05$ compared to controls.

3.5. Palmitic Acid Increases [3 H]-folate Efflux in HTR-8/SVneo Cells

The effect of palmitic acid on the function of MRP1 was studied using an efflux assay. As shown in Figure 2A, there was an increase in efflux activity in HTR-8/SVneo cells after palmitic acid treatment, with the time of exposure to palmitic acid directly related to [3 H]-folate efflux. The efflux activity was highest in cells treated with palmitic acid for the longest exposure time, which was 72 h.

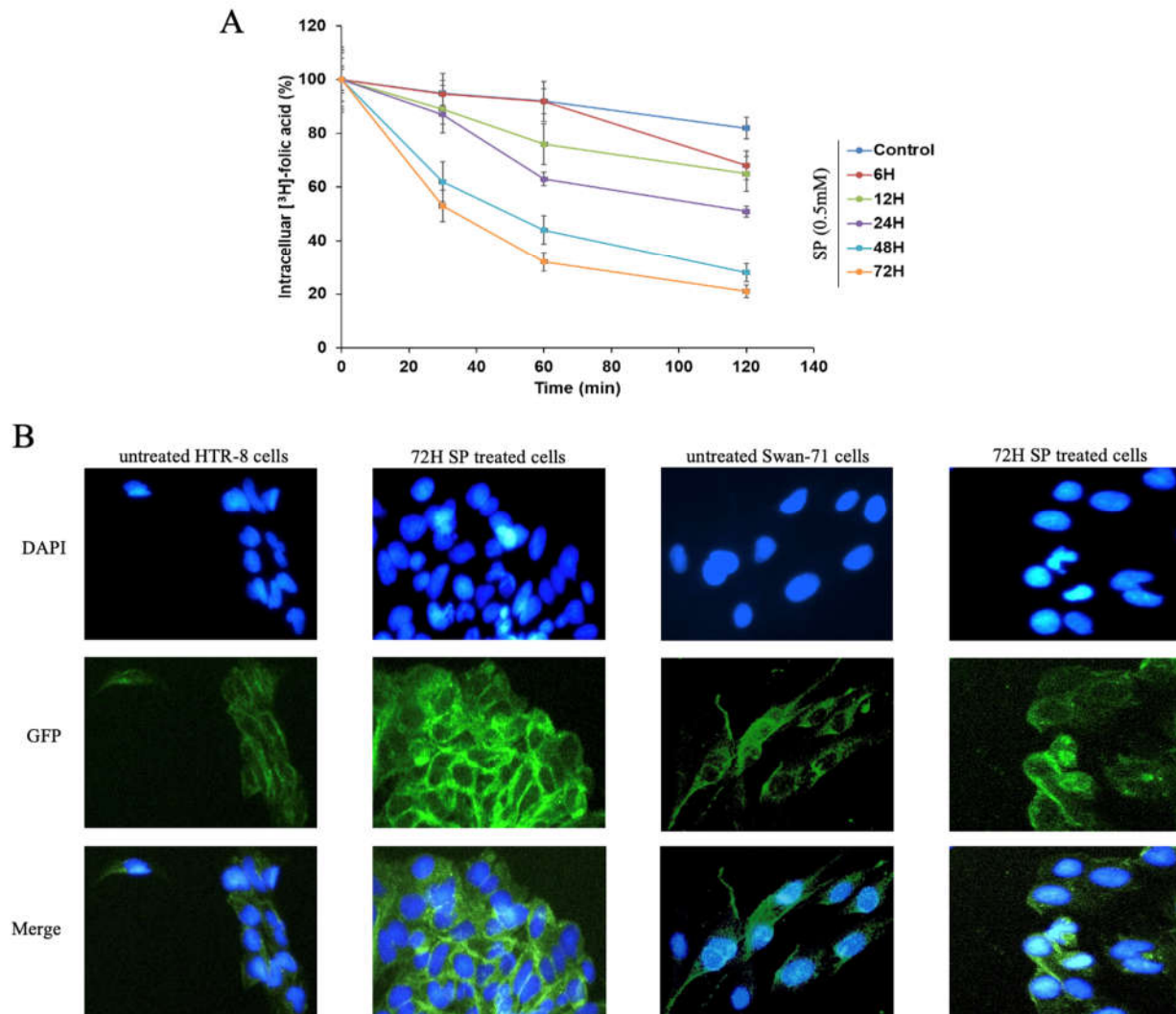


Figure 2. Effect of palmitic acid on $[^3\text{H}]$ -folate efflux and intracellular localization of MRP1 in HTR8/SVNeo cells. (A) Effect of length of exposure to 0.5 mM palmitic acid (0, 6, 12, 24, 48 and 72 h) on $[^3\text{H}]$ -folate efflux in HTR8/SVNeo cells. Cell lysates were measured for radioactivity at 0, 30, 60 and 120 min. Mean values were obtained from three independent experiments and error bars indicate SD. * $P < .05$ compared to controls. (B) MRP1 expression in HTR8/SVNeo and Swan-71 cells after treatment with palmitic acid at 0 and 72 h determined by immunofluorescence. Nuclei were stained with DAPI and MRP1 was stained with GFP. Images have been merged using Photoshop software.

3.6. Palmitic Acid Does Not Alter the Cellular Localization of MRP1

We further evaluated whether palmitic acid alters the cellular localization of MRP1 using an immunofluorescence assay. The MRP1 transporters are located on the cell membrane in both cell types. After a 72-h treatment with palmitic acid, there was no change in the intracellular distribution of MRP1 compared to controls in either HTR-8/SVneo or Swan-71 cells. However, an increase in MRP1 expression was seen, which further confirms our western blot and qRT-PCR results.

3.7. Palmitic Acid Decreases Migration and Invasion in HTR-8/SVneo and Swan-71 Cells

To ascertain whether palmitic acid decreases the invasion and migration capacity of extravillous trophoblast cells, invasion and migration assays were carried out using the Boyden chamber method. Cells that diffused through the transwell were considered migrated or invaded cells. As shown in Figures 3A, B, E and F, there was a decrease in migration in both cell lines as the exposure time to palmitic acid increased. Migration was

the lowest in cells treated with palmitic acid for 72 h, which was the longest exposure time.

For the invasion assays, cells were treated with palmitic acid for 0 to 72 h and the cells that passed through the Matrigel and the transwell membrane were considered invaded cells. As shown in Figures 3C, D, G and H, as the time of exposure to palmitic acid increased, there was a decrease in the invasion of HTR-8/SVneo and Swan-71 cells. The invasion was the lowest in the cells treated with palmitic acid for 72 h, which was the longest exposure time.

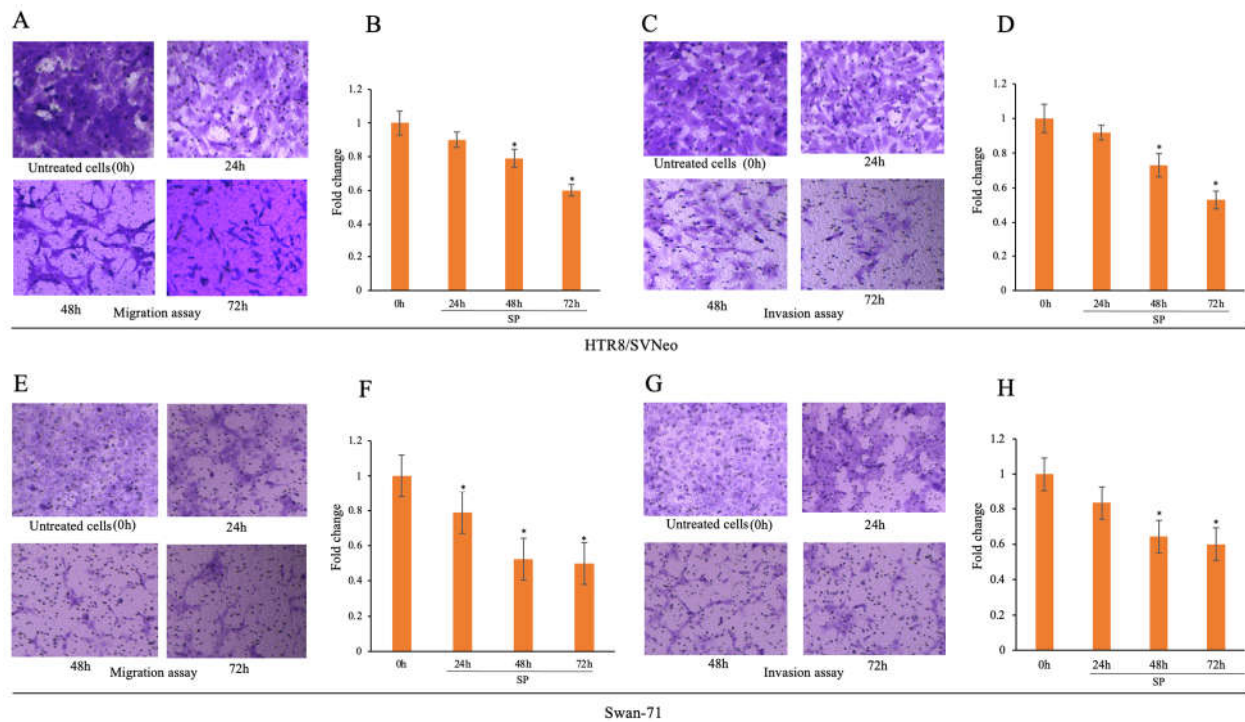


Figure 3. Effect of palmitic acid on migration and invasion in HTR8/SVNeo and Swan-71 cells. Migration (A) and invasion (C) in HTR8/SVneo cells after exposure to palmitic acid for 0 to 72 h and migration (E) and invasion (G) in Swan-71 cells after the same exposures. Quantification (B, D, F, H) was carried out by counting the migrated or invaded cells using a hemocytometer. Mean values were obtained from three independent experiments and error bars indicate SD. * $P < .05$ compared to controls.

3.8. NAC Prevents Palmitic Acid-induced Up-regulation of MRP1

To confirm that palmitic acid-induced up-regulation of MRP1 was due to increased oxidative stress, HTR-8/SVneo and Swan-71 cells were treated with or without 1 mM NAC for 2 h before being exposed to palmitic acid. The expression of MRP1 was then evaluated in both cell lines using western blotting. As shown in Figures 4A-D, the expression of MRP1 in NAC and palmitic acid treated cells was much lower compared to cells treated with palmitic acid alone and was comparable to the expression of MRP1 in control untreated cells. Interestingly, expression of MRP1 in cells treated with NAC alone was lower than in control untreated cells. These results indicate that the upregulation of MRP1 by palmitic acid is mediated by oxidative stress and is prevented by treating the cells with 1 mM NAC, a direct and indirect antioxidant.

3.9. NAC Increases Migration and Invasion in HTR-8/SVneo and Swan-71 Cells

To further test the effect of NAC on the function of extravillous trophoblast cells, additional migration and invasion experiments were carried out. We found that NAC increased migration in both HTR-8/SVneo and Swan-71 cells treated with palmitic acid, as shown in Figures 4E and F, respectively (top rows, quantification shown in Figures 4G

and I, respectively). Similar results were observed with invasion assays where NAC restored invasion capacity in palmitic acid treated HTR-8/SVneo and Swan-71 cell lines (Figures 4E and F, respectively, bottom rows, quantification shown in Figures 4H and J, respectively). Invasion and migration in NAC and palmitic acid treated cells was comparable to invasion and migration in untreated cells in both cell lines, showing that in addition to preventing the upregulation of MRP1, NAC also restores migration and invasion in EVT's.

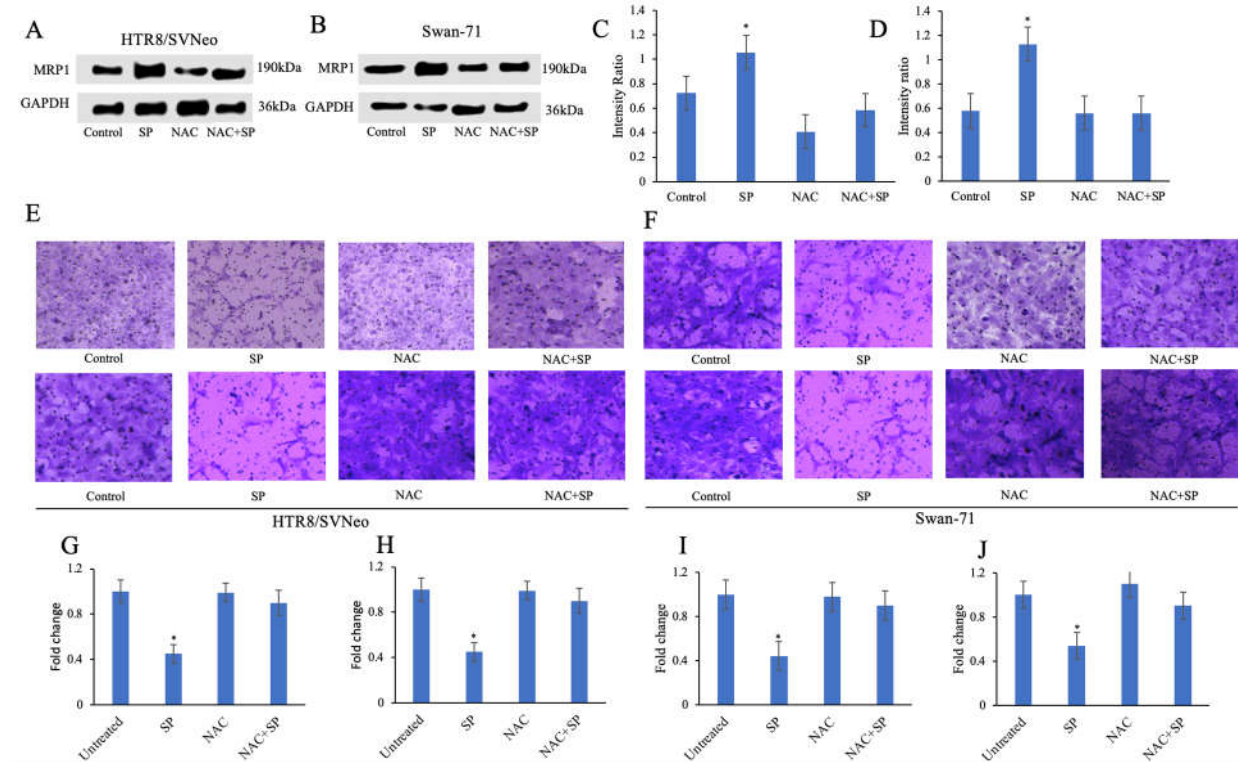


Figure 4. Effect of NAC on MRP1 expression and migration and invasion in palmitic acid treated HTR-8/SVneo and Swan-71 cells. MRP1 expression in palmitic acid treated HTR8/SVNeo (A) and Swan-71cells (B) with or without NAC pre-treatment determined by western blotting. Grayscale ratios were calculated with the help of ImageJ (C, D). Migration (top row) and invasion (bottom row) of palmitic acid treated HTR8/SVNeo cells (E) and Swan-71 cells (F) with or without NAC pretreatment. Quantification (G, H, I, J) was carried out by counting the migrated or invaded cells using a hemocytometer. Mean values were obtained from three independent experiments and error bars represent SD. * $P < .05$ compared to controls.

3.10. MRP1 Inhibitor MK-571 Partially Restores Migration and Invasion in HTR8-SVneo and Swan-71 Cells

To confirm that the decrease in migration and invasion of the EVT's is MRP1 mediated, HTR9/SVneo and Swan-71 cells were treated with MK-571, an MRP1 inhibitor, for 2 h, before being exposed to palmitic acid. As shown in Figures 5A and E, respectively (quantifications in Figures 5B and F) we found that HTR-8/SVneo and Swan-71 cells treated with MK-571 and palmitic acid had increased migration compared to cells treated with palmitic acid alone, but the difference was not statistically significant. Similarly, cells pre-treated with MK-571 had some improvement in invasive function as compared to cells treated with palmitic acid alone, but the difference was not statistically significant (Figures 5C, D, G and H). The incomplete restoration of migration and invasion is likely due to weak inhibition of MRP1 by MK-571.

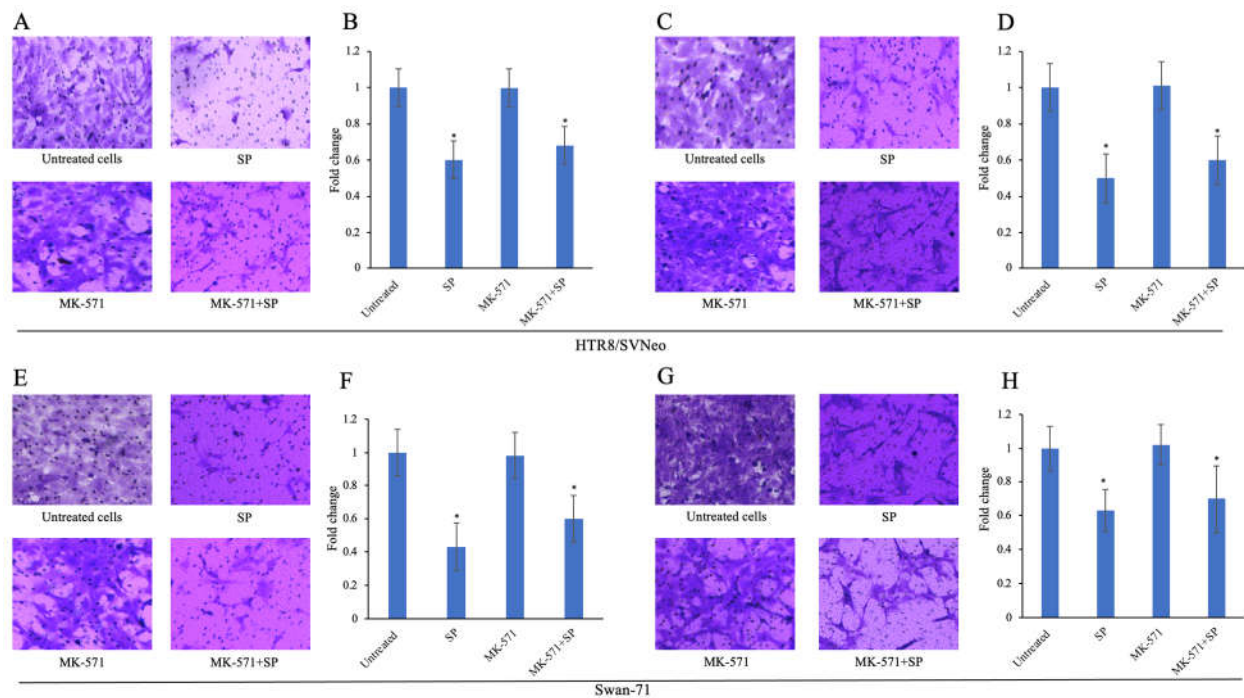


Figure 5. Effect of MK-571 on migration and invasion in palmitic acid treated HTR-8/SVneo and Swan-71 cells. Migration (A) and invasion (C) in HTR-8/SVNeo cells with or without palmitic acid exposure and MK-571 pre-treatment and migration (E) and invasion (G) of Swan-71 cells after the same exposures. Quantification (B, D, F, H) was carried out by counting the migrated or invaded cells using a hemocytometer. Mean values were obtained from three independent experiments and error bars represent SD. * $P < .05$ compared to controls.

3.11. Knockout of the *ABCC1* Gene by CRISPR/Cas9 Completely Restores Migration and Invasion in Swan-71 Cells

As MK-571 only partially restored EVT migration and invasion, to evaluate the role of MRP1 upregulation more fully, we completely knocked out the *ABCC1* gene in Swan-71 cells using CRISPR/Cas9 technology. With complete knockout of the *ABCC1* gene, there was a significant increase in migration compared to wild type Swan-71 cells treated with palmitic acid (Figures 6A and B). Similar results were observed in the invasion assay, where there was a significant increase in invasion in the *ABCC1* gene knockout subline of Swan-71 cells treated with palmitic acid as compared to wild type Swan-71 cells treated with palmitic acid (Figures 6C and D). These results indicate that MRP1 plays an important role in the migration and invasion of EVTs.

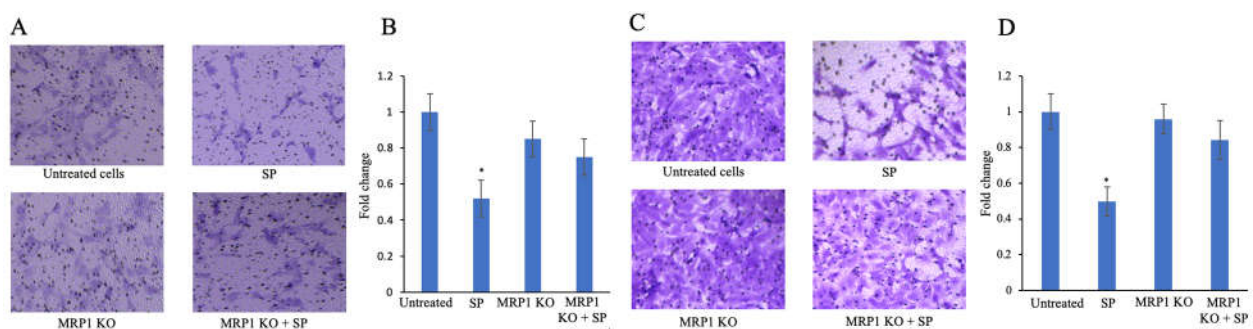


Figure 6. Effect of *ABCC1* knockout on migration and invasion in Swan-71 cells exposed to palmitic acid. Migration (A) and invasion (C) in Swan-71 *ABCC1* knockout and wild type cells with or without exposure to palmitic acid. Quantification (B, D) was carried out by counting the migrated or invaded cells using a hemocytometer. Mean values were obtained from three independent experiments and error bars represent SD. * $P < .05$.

4. Discussion

There has been a significant rise in the frequency of obstetrical complications in the last decade [21]. Most pregnant women in the United States are overweight or obese when they begin their pregnancies [22] and placentas delivered by obese women have activated mitogen-activated protein kinase-Jun N-terminal kinase pathways and increased oxidative stress [22]. Increased consumption of Western diets high in fat has significantly increased the incidence of preterm birth, ectopic pregnancy, spontaneous abortions, and intrauterine growth restriction [21]. Maternal high fat diet also causes fetal programming, increasing the offspring's susceptibility for cardiometabolic dysfunction [23-26]. Non-communicable maternal diseases (NCDs), which are driven by poor maternal nutrition [27,28] have been identified as a new focus area by The International Federation of Gynecology [29-32]. The adverse effects of maternal consumption of a high fat diet are largely related to saturated fatty acids, such as palmitic acid [33]. In this work, by using concentrations of fatty acids similar to those found in placentas of mothers consuming high fat diets [34,35], we elucidate one of the mechanisms whereby consumption of diets high in saturated fatty acids compromises the *in-utero* environment.

Various ABC transporters have been identified in the placenta and their localization and function at the maternal-fetal interface across gestation has been studied [36]. It is well known that alterations in the expression of these transporters during different stages of gestation or due to ABC transporter modulators can lead to changes in the transfer of substrates to and from the fetus [9,37,38]. However, there are limited reports about the function and presence of ABC transporters in extravillous trophoblasts[8,39].

While several reports have shown a clear association between maternal high fat diet and complications in pregnancy [16-18] the molecular mechanisms linking maternal high fat diet to undesired pregnancy outcomes and developmental changes in the fetus are poorly understood. We report here that the expression of MRP1, an ABC transporter, is increased in first trimester placental trophoblast HTR8/SVneo and Swan-71 cell lines treated with palmitic acid. In addition, we found that the expression of the *ABCC1* gene is also increased by palmitic acid treatment in both cell lines. This effect was not seen in syncytiotrophoblast cell lines, suggesting that MRP1 upregulation by palmitic acid may be specific to EVT. We also found that MRP1 was not found in the cytoplasm after palmitic acid treatment but remained localized to the EVT cell membrane, which is its normal cellular location [40], consistent with the increase in the number of MRP1 protein molecules affecting efflux function.

Others have reported that the expression and function of MRP1 increases in the presence of oxidative stress [41,42]. Oxidative stress is strongly linked to unfavorable obstetrical outcomes [43]. For example, accelerated placental aging is driven by oxidative stress and leads to preterm birth [43,44]. Our finding that NAC prevents up-regulation of MRP1 and rescues migration and invasion in palmitic acid exposed EVTs provides a connection between oxidative stress in the *in-utero* milieu and EVT function. Saturated fatty acids such as palmitic acid have been shown to decrease total antioxidant capacity and increase lipid peroxidation in EVTs [45]. Oxidative stress, in turn, results in increased MRP1-mediated folate efflux, depleting intracellular folate pools needed for normal EVT driven spiral artery remodeling. Further, glutathione (GSH), the body's main antioxidant [46], is also a substrate of MRP1. Increases in MRP1 expression lead to increases in GSH efflux rates, locking together oxidative stress, MRP1 upregulation and folate efflux in a feed forward loop.

Folic acid is prescribed to pregnant women to prevent fetal defects and to enhance migration and invasion functions of EVTs during placentation [1,12,47]. We show here, for the first time, that palmitic acid causes folate efflux from EVTs with a direct correlation between the rate of efflux and the time of exposure to this saturated fatty acid. In addition, palmitic acid treatment significantly decreases migration and invasion in both HTR8/SVneo and Swan-71 cells, linking a saturated fatty acid to impaired EVT function. We also found that pre-treatment of palmitic acid exposed EVTs with the antioxidant

NAC significantly decreases MRP1 expression and restores EVT migration and invasion, suggesting that increased MRP1 expression is linked to impairment of EVT function. Consistent with MRP1's role in impairing EVT function, inhibiting MRP1 pharmacologically with the weak inhibitor MK-571 partially restores migration and invasion in HTR-8/SVneo and Swan-71 cells. Further, eliminating MRP1 completely, by knocking out the *ABCC1* gene, restores migration and invasion significantly in Swan-71 cells.

5. Conclusion

EVTs play a very important role in the development of the placenta [48,49]. They migrate and invade spiral arteries, which is critical for remodeling [48,50,51]. Previous studies have shown that palmitic acid induces oxidative stress in cultured EVT. Oxidative stress, in turn, is known to increase levels of MRP1 [13, 42, 52, 53]. The novel finding in this study is that palmitic acid impairs EVT function by inducing MRP1-mediated folate efflux. Elucidation of pathways connecting maternal high fat diet consumption to fetal programming provides insights that can lead to future therapeutic approaches to safeguard the developmental origins of human health.

Author Contributions: Conceptualization: S.E.R. and Z.-S. C.; Investigation: Y.A. and Q.T.; Analysis: Y.A.; Writing—original draft, Y.A.; Writing—review and editing—S.E.R.; Funding acquisition—S.E.R.; Supervision—S.E. R., Z.-S. C. and J.N.D.W. All others have read and agreed to the published version of the manuscript.

Funding: This work was supported by an NIH grant (1R16GM145586) awarded to S.E.R.

Acknowledgments: We are grateful to Dr. Charles Graham for his kind donation of the HTR-8/SVneo cells and to Dr. Gil Mor for his kind donation of the Swan-71 cells. S.E.R. is grateful for support from the NIH (1R16GM145586) and from the Nassau Health Care Corporation.

Conflicts of Interest: The authors declare no conflict of interest.

References

- Knöfler, M.; Pollheimer, J. Human Placental Trophoblast Invasion and Differentiation: A Particular Focus on Wnt Signaling. *Front. Genet.* **2013**, *4*, doi:10.3389/fgene.2013.00190.
- Ji, L.; Brkić, J.; Liu, M.; Fu, G.; Peng, C.; Wang, Y.-L. Placental Trophoblast Cell Differentiation: Physiological Regulation and Pathological Relevance to Preeclampsia. *Mol. Aspects Med.* **2013**, *34*, 981–1023, doi:10.1016/j.mam.2012.12.008.
- Leandro, K.; Bicker, J.; Alves, G.; Falcão, A.; Fortuna, A. ABC Transporters in Drug-Resistant Epilepsy: Mechanisms of Upregulation and Therapeutic Approaches. *Pharmacol. Res.* **2019**, *144*, 357–376, doi:10.1016/j.phrs.2019.04.031.
- Kathawala, R.J.; Gupta, P.; Ashby, C.R.; Chen, Z.-S. The Modulation of ABC Transporter-Mediated Multidrug Resistance in Cancer: A Review of the Past Decade. *Drug Resist. Updat.* **2015**, *18*, 1–17, doi:10.1016/j.drug.2014.11.002.
- Gupta, P.; Xie, M.; Narayanan, S.; Wang, Y.-J.; Wang, X.-Q.; Yuan, T.; Wang, Z.; Yang, D.-H.; Chen, Z.-S. GSK1904529A, a Potent IGF-IR Inhibitor, Reverses MRP1-Mediated Multidrug Resistance: G SK1904529A AS M RP1 A NTAGONIST. *J. Cell. Biochem.* **2017**, *118*, 3260–3267, doi:10.1002/jcb.25975.
- Vasiliou, V.; Vasiliou, K.; Nebert, D.W. Human ATP-Binding Cassette (ABC) Transporter Family. *Hum. Genomics* **2008**, *3*, 281, doi:10.1186/1479-7364-3-3-281.
- Gupta, P.; Zhang, Y.-K.; Zhang, X.-Y.; Wang, Y.-J.; Lu, K.W.; Hall, T.; Peng, R.; Yang, D.-H.; Xie, N.; Chen, Z.-S. Voruciclib, a Potent CDK4/6 Inhibitor, Antagonizes ABCB1 and ABCG2-Mediated Multi-Drug Resistance in Cancer Cells. *Cell. Physiol. Biochem.* **2018**, *45*, 1515–1528, doi:10.1159/000487578.
- Joshi, A.A.; Vaidya, S.S.; St-Pierre, M.V.; Mikheev, A.M.; Desino, K.E.; Nyandege, A.N.; Audus, K.L.; Unadkat, J.D.; Gerck, P.M. Placental ABC Transporters: Biological Impact and Pharmaceutical Significance. *Pharm. Res.* **2016**, *33*, 2847–2878, doi:10.1007/s11095-016-2028-8.
- Imperio, G.E.; Javam, M.; Lye, P.; Constantinof, A.; Dunk, C.E.; Reis, F.M.; Lye, S.J.; Gibb, W.; Matthews, S.G.; Ortega-Carvalho, T.M.; et al. Gestational Age-Dependent Gene Expression Profiling of ATP-Binding Cassette Transporters in the Healthy Human Placenta. *J. Cell. Mol. Med.* **2019**, *23*, 610–618, doi:10.1111/jcmm.13966.
- Bhattacharjee, J.; Ietta, F.; Giacomello, E.; Bechi, N.; Romagnoli, R.; Fava, A.; Paulesu, L. Expression and Localization of ATP Binding Cassette Transporter A1 (ABCA1) in First Trimester and Term Human Placenta. *Placenta* **2010**, *31*, 423–430, doi:10.1016/j.placenta.2010.02.015.
- Biondi, C.; Ferretti, M.E.; Lunghi, L.; Medici, S.; Cervellati, F.; Pavan, B.; Vesce, F.; Morano, D.; Adinolfi, E.; Bertoni, F.; et al. CAMP Efflux from Human Trophoblast Cell Lines: A Role for Multidrug Resistance Protein (MRP)1 Transporter. *Mol. Hum. Reprod.* **2010**, *16*, 481–491, doi:10.1093/molehr/gaq023.

12. Rahat, B.; Hamid, A.; Bagga, R.; Kaur, J. Folic Acid Levels During Pregnancy Regulate Trophoblast Invasive Behavior and the Possible Development of Preeclampsia. *Front. Nutr.* **2022**, *9*, 847136, doi:10.3389/fnut.2022.847136.
13. Manuel, C.R.; Charron, M.J.; Ashby, C.R.; Reznik, S.E. Saturated and Unsaturated Fatty Acids Differentially Regulate In Vitro and Ex Vivo Placental Antioxidant Capacity. *Am. J. Reprod. Immunol.* **2018**, *80*, e12868, doi:10.1111/aji.12868.
14. Williams, L.; Burgos, E.; Vuguin, P.; Manuel, C.R.; Pekson, R.; Munnangi, S.; Charron, M.J.; Reznik, S.E. N-Acetylcysteine Resolves Placental Inflammatory-Vasculopathic Changes in Mice Consuming a High Fat Diet. *Am. J. Path.* **2019**, *189*, 2246-2257, doi:10.1016/j.ajpath.2019.07.010.
15. Charron, M.J.; Williams, L.; Seki, Y.; Du, X.Q.; Chaurasia, B.; Saghatelian, A.; Summers, S.A.; Katz, E.B.; Vuguin, P.; Reznik, S.E. Antioxidant Effects of N-Acetylcysteine Prevent Programmed Metabolic Disease in Mice. *Diabetes.* **2020**, *69*, 1650-1661, doi:10.2337/db19-1129.
16. Wang, Y.-W.; Yu, H.-R.; Tiao, M.-M.; Tain, Y.-L.; Lin, I.-C.; Sheen, J.-M.; Lin, Y.-J.; Chang, K.-A.; Chen, C.-C.; Tsai, C.-C.; et al. Maternal Obesity Related to High Fat Diet Induces Placenta Remodeling and Gut Microbiome Shaping That Are Responsible for Fetal Liver Lipid Dysmetabolism. *Front. Nutr.* **2021**, *8*, 736944, doi:10.3389/fnut.2021.736944.
17. Lin, X.-H.; Gao, L.; Tian, S.; Klausen, C.; Guo, M.-X.; Gao, Q.; Liu, M.-E.; Wang, H.; Wu, D.-D.; Zhou, C.-L.; et al. Maternal High-Fat-Diet Exposure Is Associated with Elevated Blood Pressure and Sustained Increased Leptin Levels through Epigenetic Memory in Offspring. *Sci. Rep.* **2021**, *11*, 316, doi:10.1038/s41598-020-79604-4.
18. Brix, N.; Ernst, A.; Lauridsen, L.L.B.; Arah, O.A.; Nohr, E.A.; Olsen, J.; Henriksen, T.B.; Ramlau-Hansen, C.H. Maternal Pre-Pregnancy Obesity and Timing of Puberty in Sons and Daughters: A Population-Based Cohort Study. *Int. J. Epidemiol.* **2019**, *48*, 1684-1694, doi:10.1093/ije/dyz125.
19. Ehrhart, I.C.; Parker, P.E.; Weidner, W.J.; Dabney, J.M.; Scott, J.B.; Haddy, F.J. Coronary Vascular and Myocardial Responses to Carotid Body Stimulation in the Dog. *Am. J. Physiol.* **1975**, *229*, 754-760, doi:10.1152/ajplegacy.1975.229.3.754.
20. Lin, X.-H.; Gao, L.; Tian, S.; Klausen, C.; Guo, M.-X.; Gao, Q.; Liu, M.-E.; Wang, H.; Wu, D.-D.; Zhou, C.-L.; et al. Maternal High-Fat-Diet Exposure Is Associated with Elevated Blood Pressure and Sustained Increased Leptin Levels through Epigenetic Memory in Offspring. *Sci. Rep.* **2021**, *11*, 316, doi:10.1038/s41598-020-79604-4.
21. Purisch, S.E.; Gyamfi-Bannerman, C. Epidemiology of Preterm Birth. *Semin. Perinatol.* **2017**, *41*, 387-391, doi:10.1053/j.semperi.2017.07.009.
22. Saben, J.; Lindsey, F.; Zhong, Y.; et al. Maternal Obesity is Associated with a Lipotoxic Placental Environment. *Placenta.* **2014**, *35*, 171-177, doi:10.1016/j.placenta.2014.01.003.
23. Cerf, M.E. High Fat Programming and Cardiovascular Disease. *Medicina (Mex.)* **2018**, *54*, 86, doi:10.3390/medicina54050086.
24. Elsagr, J.M.; Zhao, S.K.; Ricciardi, V.; Dean, T.A.; Takahashi, D.L.; Sullivan, E.; Wesolowski, S.R.; McCurdy, C.E.; Kievit, P.; Friedman, J.E.; et al. Western-Style Diet Consumption Impairs Maternal Insulin Sensitivity and Glucose Metabolism during Pregnancy in a Japanese Macaque Model. *Sci. Rep.* **2021**, *11*, 12977, doi:10.1038/s41598-021-92464-w.
25. Sullivan, E.L.; Riper, K.M.; Lockard, R.; Valleau, J.C. Maternal High-Fat Diet Programming of the Neuroendocrine System and Behavior. *Horm. Behav.* **2015**, *76*, 153-161, doi:10.1016/j.yhbeh.2015.04.008.
26. Desai, M.; Ross, M. Fetal Programming of Adipose Tissue: Effects of Intrauterine Growth Restriction and Maternal Obesity/High-Fat Diet. *Semin. Reprod. Med.* **2011**, *29*, 237-245, doi:10.1055/s-0031-1275517.
27. Pullar, J.; Wickramasinghe, K.; Demaio, A.R.; Roberts, N.; Perez-Blanco, K.-M.; Noonan, K.; Townsend, N. The Impact of Maternal Nutrition on Offspring's Risk of Non-Communicable Diseases in Adulthood: A Systematic Review. *J. Glob. Health* **2019**, *9*, 020405, doi:10.7189/jogh.09.020405.
28. Randunu, R.S.; Bertolo, R.F. The Effects of Maternal and Postnatal Dietary Methyl Nutrients on Epigenetic Changes That Lead to Non-Communicable Diseases in Adulthood. *Int. J. Mol. Sci.* **2020**, *21*, 3290, doi:10.3390/ijms21093290.
29. Poon, L.C.; McIntyre, H.D.; Hyett, J.A.; da Fonseca, E.B.; Hod, M. The First-Trimester of Pregnancy – A Window of Opportunity for Prediction and Prevention of Pregnancy Complications and Future Life. *Diabetes Res. Clin. Pract.* **2018**, *145*, 20-30, doi:10.1016/j.diabres.2018.05.002.
30. Kikuchi, K.; Ayer, R.; Okawa, S.; Nishikitani, M.; Yokota, F.; Jimba, M.; Nakashima, N. Interventions Integrating Non-Communicable Disease Prevention and Reproductive, Maternal, Newborn, and Child Health: A Systematic Review. *Biosci. Trends* **2018**, *12*, 116-125, doi:10.5582/bst.2018.01070.
31. Prince, M.; Patel, V.; Saxena, S.; Maj, M.; Maserko, J.; Phillips, M.R.; Rahman, A. No Health without Mental Health. *The Lancet* **2007**, *370*, 859-877, doi:10.1016/S0140-6736(07)61238-0.
32. Hegelund, M.H.; Faurholt-Jepsen, D.; Bygbjerg, I.C. Prevention of Opportunistic Non-Communicable Diseases. *Int. Health* **2020**, *12*, 1-2, doi:10.1093/inthealth/ihz011.
33. Rocha, D.M.; Bressan, J.; Hermsdorff, H.H. The Role of Dietary Fatty Acid Intake in Inflammatory Gene Expression: A Critical Review. *Sao. Paulo Med. J.* **2017**, *135*, 157-168, doi:10.1590/1516-3180.2016.008607072016.
34. Miller, T.; LeBrasseur, N.K.; Cote, G.M.; et al. Oleate Prevents Palmitate-induced Cytotoxic Stress in Cardiac Myocytes. *Biochem. Biophys. Res. Comm.* **2005**, *336*, 309-315, doi:10.1016/j.bbrc.2005.08.088.
35. Saitoh, Y.; Hongwei, W.; Ueno, H.; Mizuta, M.; Nakazato, M. Candestart Attenuates Fatty Acid-induced Oxidative Stress and NAD(P)H Oxidase Activity in Pancreatic Beta-cells. *Diabetes Res. Clin. Pract.* **2010**, *1*, 54-59, doi:10.1016/j.diabres.2010.06.005.
36. Karahoda, R.; Zaugg, J.; Fuenzalida, B.; Kallol, S.; Moser-Haessig, R.; Staud, F.; Albrecht, C. Trophoblast Differentiation Affects Crucial Nutritive Functions of Placental Membrane Transporters. *Front. Cell Dev. Biol.* **2022**, *10*, 820286, doi:10.3389/fcell.2022.820286.

37. Karttunen, V.; Mohammed, A.M.; Vähäkangas, K. The Significance of ABC Transporters in Human Placenta for the Exposure of Fetus to Xenobiotics. In *Reproductive and Developmental Toxicology*; Elsevier, 2017; pp. 1275–1300 ISBN 978-0-12-804239-7.
38. Vähäkangas, K.H.; Veid, J.; Karttunen, V.; Partanen, H.; Sieppi, E.; Kumm, M.; Myllynen, P.; Loikkanen, J. The Significance of ABC Transporters in Human Placenta for the Exposure of the Fetus to Xenobiotics. In *Reproductive and Developmental Toxicology*; Elsevier, 2011; pp. 1051–1065 ISBN 978-0-12-382032-7.
39. Yamashita, M.; Markert, U.R. Overview of Drug Transporters in Human Placenta. *Int. J. Mol. Sci.* **2021**, *22*, 13149, doi:10.3390/ijms222313149.
40. Granitzer, S.; Ellinger, I.; Khan, R.; Gelles, K.; Widhalm, R.; Hengstschläger, M.; Zeisler, H.; Desoye, G.; Tupova, L.; Ceckova, M.; et al. In Vitro Function and in Situ Localization of Multidrug Resistance-Associated Protein (MRP)1 (ABCC1) Suggest a Protective Role against Methyl Mercury-Induced Oxidative Stress in the Human Placenta. *Arch. Toxicol.* **2020**, *94*, 3799–3817, doi:10.1007/s00204-020-02900-5.
41. Hanssen, K.M.; Haber, M.; Fletcher, J.I. Targeting Multidrug Resistance-Associated Protein 1 (MRP1)-Expressing Cancers: Beyond Pharmacological Inhibition. *Drug Resist. Updat.* **2021**, *59*, 100795, doi:10.1016/j.drug.2021.100795.
42. Hirrlinger, J.; König, J.; Keppler, D.; Lindenau, J.; Schulz, J.B.; Dringen, R. The Multidrug Resistance Protein MRP1 Mediates the Release of Glutathione Disulfide from Rat Astrocytes during Oxidative Stress. *J. Neurochem.* **2001**, *76*, 627–636, doi:10.1046/j.1471-4159.2001.00101.x.
43. Sultana, Z.; Maiti, K.; Aitken, J.; Morris, J.; Dedman, L.; Smith, R. Oxidative Stress, Placental Ageing-related Pathologies and Adverse Pregnancy Outcomes. *Am. J. Reprod. Immunol.* **2017**, *77*, e12653, doi:10.1111/aji.12653.
44. Menon, R. Oxidative Stress Damage as a Detrimental Factor in Preterm Birth Pathology. *Front. Immunol.* **2014**, *5*, 567, doi:10.3389/fimmu.2014.00567.
45. Bhattacharjee, J.; Ietta, F.; Giacomello, E.; Bechi, N.; Romagnoli, R.; Fava, A.; Paulesu, L. Expression and Localization of ATP Binding Cassette Transporter A1 (ABCA1) in First Trimester and Term Human Placenta. *Placenta* **2010**, *31*, 423–430, doi:10.1016/j.placenta.2010.02.015.
46. Bains, V.K.; Bains, R. The Antioxidant Master Glutathione and Periodontal Health. *Dent. Res. J.* **2015**, *12*, 389–405, doi:10.4103/1735-3327.166169.
47. Øyen, N.; Olsen, S.F.; Basit, S.; Leirgul, E.; Strøm, M.; Carstensen, L.; Granström, C.; Tell, G.S.; Magnus, P.; Vollset, S.E.; et al. Association Between Maternal Folic Acid Supplementation and Congenital Heart Defects in Offspring in Birth Cohorts From Denmark and Norway. *J. Am. Heart Assoc.* **2019**, *8*, e011615, doi:10.1161/JAHA.118.011615.
48. Pollheimer, J.; Vondra, S.; Baltayeva, J.; Beristain, A.G.; Knöfler, M. Regulation of Placental Extravillous Trophoblasts by the Maternal Uterine Environment. *Front. Immunol.* **2018**, *9*, 2597, doi:10.3389/fimmu.2018.02597.
49. Le, H.T.; Atif, J.; Mara, D.L.; Castellana, B.; Treissman, J.; Baltayeva, J.; Beristain, A.G. ADAM8 Localizes to Extravillous Trophoblasts within the Maternal–Fetal Interface and Potentiates Trophoblast Cell Line Migration through a B1 Integrin-Mediated Mechanism. *MHR Basic Sci. Reprod. Med.* **2018**, *24*, 495–509, doi:10.1093/molehr/gay034.
50. Moser, G.; Weiss, G.; Sundl, M.; Gauster, M.; Siwetz, M.; Lang-Olip, I.; Huppertz, B. Extravillous Trophoblasts Invade More than Uterine Arteries: Evidence for the Invasion of Uterine Veins. *Histochem. Cell Biol.* **2017**, *147*, 353–366, doi:10.1007/s00418-016-1509-5.
51. Labarrere, C.A.; DiCarlo, H.L.; Bammerlin, E.; Hardin, J.W.; Kim, Y.M.; Chaemsaitong, P.; Haas, D.M.; Kassab, G.S.; Romero, R. Failure of Physiologic Transformation of Spiral Arteries, Endothelial and Trophoblast Cell Activation, and Acute Atherosclerosis in the Basal Plate of the Placenta. *Am. J. Obstet. Gynecol.* **2017**, *216*, 287.e1–287.e16, doi:10.1016/j.ajog.2016.12.029.
52. Cole, S.P.C. Targeting Multidrug Resistance Protein 1 (MRP1, ABCC1): Past, Present, and Future. *Annu. Rev. Pharmacol. Toxicol.* **2014**, *54*, 95–117, doi:10.1146/annurev-pharmtox-011613-135959.
53. Wu, F.; Tian, F.-J.; Lin, Y. Oxidative Stress in Placenta: Health and Diseases. *BioMed Res. Int.* **2015**, *2015*, 1–15, doi:10.1155/2015/293271.

Figure Legends

Figure S1: Expression of ABC transporters and effect of linoleic and palmitic acids in the placental cell lines.

Expression of BCRP (A), PgP (B), MRP1 (C) and MRP7 (D) in the placental cell lines determined by western blotting.

MRP1 expression in JEG-3 (E) and BeWo (F) cells after exposure to 0.5 mM palmitic acid for 0-72 h. MRP1 expression in

JEG-3 (G), HTR-8/SVneo (H), Swan-71 (I) and BeWo (J) cells after exposure to 1 mM linoleic acid for 0-72 h.