

---

Article

# Confounding factors influencing the kinetic and the magnitude of serological response following administration of BNT162b2.

Jean-Louis Bayart<sup>1</sup>, Laure Morimont<sup>2,3</sup>, Mélanie Closset<sup>4</sup>, Grégoire Wieërs<sup>5</sup>, Tatiana Roy<sup>1</sup>, Vincent Gerin<sup>1</sup>, Marc Elsen<sup>6</sup>, Christine Eucher<sup>6</sup>, Sandrine Van Eeckhoudt<sup>7</sup>, Nathalie Ausselet<sup>8</sup>, Clara David<sup>3</sup>, François Mullier<sup>4</sup>, Jean-Michel Dogné<sup>2</sup>, Julien Favresse<sup>2,6</sup> and Jonathan Douxfils<sup>2,3,\*</sup>

<sup>1</sup>Department of Laboratory Medicine, Clinique Saint-Pierre, Ottignies, Belgium.

<sup>2</sup>Department of Pharmacy, Namur Research Institute for Life Sciences, Namur Thrombosis and Hemostasis Center, University of Namur, Namur, Belgium.

<sup>3</sup>QUALblood sa, Namur, Belgium

<sup>4</sup>Department of Laboratory Medicine, CHU-UCL Namur, Université Catholique de Louvain, Yvoir, Belgium.

<sup>5</sup>Department of Internal Medicine, Clinique Saint-Pierre, Ottignies, Belgium.

<sup>6</sup>Department of Laboratory Medicine, Clinique Saint-Luc, Bouge, Belgium.

<sup>7</sup>Department of Internal Medicine, Clinique Saint-Luc, Bouge, Belgium.

<sup>8</sup>Department of Internal Medicine, CHU-UCL Namur, Université Catholique de Louvain, Yvoir, Belgium.

\*Correspondence: jonathan.douxfils@unamur.be; Tel.: (+32 81 72 42 91)

**Abstract:** *Background:* Little is known about potential confounding factors influencing the humoral response in individuals having received the BNT162b2 vaccine. *Methods:* Blood samples from 231 subjects were collected before and 14, 28 and 42 days following COVID-19 vaccination with BNT162b2. Anti-Spike Receptor-Binding-Domain protein (anti-Spike/RBD) immunoglobulin G (IgG) antibodies were measured at each time-point. Impact of age, sex, childbearing age status, hormonal therapy, blood group, body mass index and past-history of SARS-CoV-2 infection were assessed by multivariable analyses. *Results and Conclusions:* In naïve subjects, the level of anti-Spike/RBD antibodies gradually increased following administration of the first dose to reach the maximal response at day 28 and then plateauing at day 42. In vaccinated subjects with previous SARS-CoV-2 infection, the plateau was reached sooner (i.e. at day 14). In the naïve population, age had a significant negative impact on anti-Spike/RBD titers at day 14 and 28 while lower levels were observed for males at day 42, when corrected for other confounding factors. BMI as well as B and AB blood groups had a significant impact in various subgroups on the early response at day 14 but no longer after. No significant confounding factors were highlighted in the previously infected group.

**Keywords:** SARS-CoV-2; vaccine; BNT162b2; antibody, serology; kinetic; age; gender; BMI; blood-group.

---

## 1. Introduction

Vaccines against severe acute respiratory syndrome coronavirus (SARS-CoV-2) are today the main hope for curbing the spread of infection worldwide. Among the several types of SARS-CoV-2 vaccines that have been developed, mRNA-based vaccines were the first to be approved by the European Medicines Agency (EMA) and the Food and Drug Administration (FDA) [1]. It has been found that the BNT162b2 vaccine (Comirnaty®; Pfizer-BioNTech; Puurs, Belgium and Mainz, Germany) conferred a protection of 95% against Coronavirus Disease 2019 (COVID-19) in a large and multinational clinical trial [2]. While the efficacy and safety data obtained from mass vaccination campaign are very encouraging, data concerning the humoral response following the administration of the two-dose regimen of the BNT162b2 vaccine are only emerging. More specifically, there is

few information regarding possible confounding factors that may lead to variability in vaccine-induced immunogenicity.

In this study, we comprehensively characterized the early time kinetic and the magnitude of IgG antibody response against the SARS-CoV-2 receptor binding domain of the spike protein (Spike/RBD) in a cohort of 231 subjects. We also assessed whether the age, sex, ABO blood group, childbearing age status, hormonal therapy, body mass index (BMI) and previous SARS-CoV-2 infection were likely to influence the immune response.

## 2. Materials and Methods

### 2.1. Study population

Two hundred and thirty-one volunteers from 3 medical centers in Belgium were enrolled in an ongoing prospective and interventional clinical trial (CRO-VAX-HCP study; EudraCT registration number: 2020-006149-21). The primary objective of this study was to assess the humoral response in a population of healthcare professionals having received the BNT162b2 mRNA COVID-19 vaccine. The demographical characteristics of the population are depicted in **Table 1**.

**Table 1:** Demographical characteristics of the participants. † BMI data were available only in 220 subjects

Variables	Total subject number (n = 231)
Age (median, range)	43 (23 – 66)
Sex (n, %)	
Female	169 (73%)
Male	62 (27%)
Previous SARS-CoV-2 infection (n, %)	72 (31%)
BMI in kg/m <sup>2</sup> (median, range) †	23.7 (15.3 – 48.2)
ABO blood group (n, %)	
A	76 (33%)
B	9 (4%)
AB	18 (8%)
O	98 (42%)
Unknown	30 (13%)
For female gender only	
Childbearing age (n, %)	121 (72%)
<i>Hormonal contraception</i>	78 (65%)
<i>No hormonal contraception</i>	38 (31%)
<i>Unknown</i>	5 (4%)
Menopausal (n, %)	48 (28%)
<i>Hormonal replacement therapy</i>	13 (27%)
<i>No hormonal replacement therapy</i>	30 (63%)
<i>Unknown</i>	5 (10%)

Among them, 74% (n = 170) were females (mean age = 42.6 years; range: 23 to 66 years) and 26% (n = 61) were males (mean age = 42.8 years; range: 23 to 64 years). Seventy-three volunteers (31.6%) had a previous positive molecular diagnostic of SARS-CoV-2

infection (n = 65; mean time since reverse transcription polymerase chain reaction (RT-PCR) = 99 days) and/or a positive serological diagnostic at baseline evaluation (n = 8). Participants received the first vaccine dose from January 18 to February 17, 2021. The second vaccine dose was systematically administered 21 days after the first dose. Samples were collected within two days (i.e. defined as day 0) and after 14 (+2), 28 (+3) and 42 (+4) days following the first dose of BNT162b2. Demographical data were collected at baseline and included sex, age, ABO blood group, childbearing age status, female hormonal therapy and BMI.

All participants provided a detailed informed consent prior to collection of data and specimen.

## 2.2. Analytical procedures

Anti-Spike/RBD IgG antibodies (Architect® SARS-CoV-2 IgG II Quant, Abbott, Wavre, Belgium) were measured at baseline and at 14, 28 and 42 days following the first dose administration. The positivity cut-off provided by the manufacturer (i.e. > 50 AU/mL) was used. Samples higher than the upper limit of linearity (40.000 AU/mL) were systematically diluted and retested. Total antibodies against the SARS-CoV-2 NCP (Elecys® Anti-SARS-CoV-2 NCP qualitative ECLIA, Roche Diagnostics, Machelen, Belgium) were also measured to attest about a past-infectious episode with an optimized cutoff index (COI) of 0.165 as positive threshold [3].

## 2.3. Statistical analysis

Multiple comparison between anti-Spike/RBD values at each time point were performed by Kruskal-Wallis followed by Dunn's test. Stratifications were done according to the previous COVID-19 status, the sex, and the age (< or > 45 years). Correlations between continuous variables and the log<sub>10</sub>-transformed anti-Spike/RBD values was done using the Spearman correlation coefficient. Direct comparison for dichotomous variables were assessed using Mann-Whitney non-parametric test.

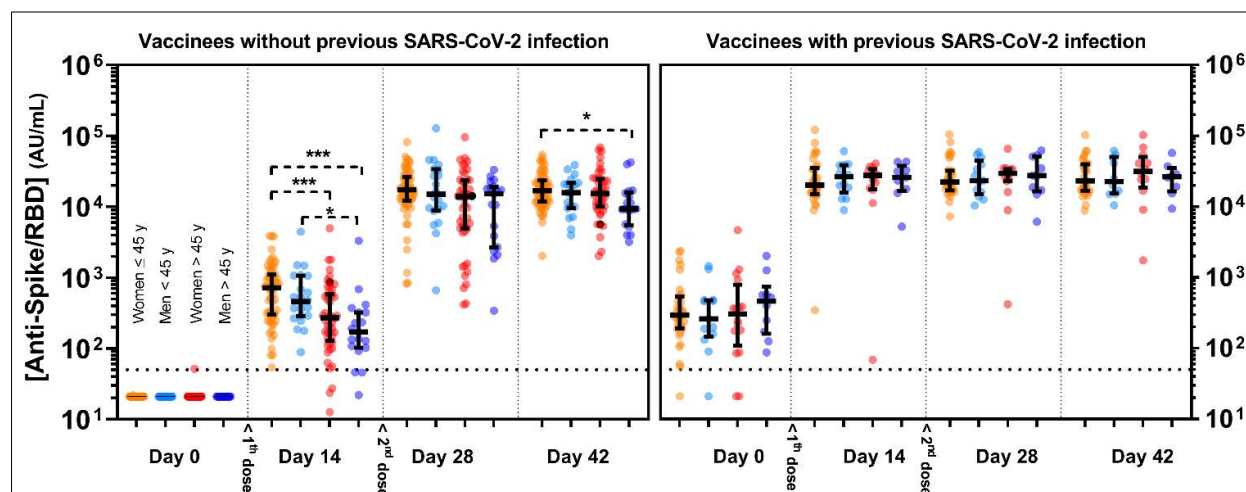
Multiple linear regression adjusted for COVID-19 pre-infectious status, sex, ABO blood group, hormonal status and therapy for female (dichotomous variables), age and BMI (continuous variables) were used to analyze the clinical determinants of the log<sub>10</sub>-transformed anti-Spike/RBD values outcome in the population at day 14, 28 and 42. Sub analyses have been performed using multiple stratifications based on pre-COVID-19 infection and sex. Multicollinearity was assessed to verify how each independent variable can be predicted from the other variables. R<sup>2</sup> values for collinearity greater than 0.75 suspect that multicollinearity is present in the model.

P value < 0.05 was used as a significance level. Data analysis was performed using GraphPad Prism® software (version 9.1.0, San Diego, CA, USA).

## 3. Results

### 3.1. Global kinetics

In previously uninfected and seronegative individuals, 96.1% (148/154) showed a seroconversion 14 days after the first dose. Following the second dose, all subjects showed values above the positive threshold. At day 28, previously uninfected subjects showed a median value of 14,989 AU/mL (IQR: 7,238 to 24,947 AU/mL), a 40.5-fold increase (p < 0.0001) compared to the serological response observed at day 14 (370 AU/mL; IQR: 181 to 831 AU/mL). At the individual level, volunteers reached their highest antibody titers at day 28 or 42. However, no significant change was observed between day 28 and day 42 (p > 0.999) (Table 2 and Figure 1). None of these uninfected volunteers were positive to anti-NCP antibodies at baseline and anti-NCP titers remained unchanged until day 42 (data not shown).



**Figure 1: Kinetic response of anti-Spike/RBD antibodies in vaccinees without or with previous SARS-CoV-2 infection.** Y-axis represent  $\log_{10}$ -transformed Anti-Spike/RBD values. Horizontal dotted lines represent the positive threshold (= 50 AU/mL). The second dose (2<sup>nd</sup> dose) was systematically administered at day 21. Groups were separated according to their previous COVID-19 status, sex and age ( $\leq$  or  $>$  45 years, a threshold chosen given the close median values observed in the two genders). Data are presented with median and IQR. \*\*\* =  $p < 0.0001$ ; \* =  $p < 0.05$

In individuals with an history of SARS-CoV-2 infection or positive anti-NCP at baseline, 94.5% (69/73) also presented with anti-Spike/RBD antibodies at baseline collection (299 AU/mL; IQR 174 to 540 AU/mL). Following vaccination, a significant ( $p < 0.0001$ ) 78.8-fold increase was observed at day 14 (23,515 AU/mL; IQR: 15,793 to 35,088 AU/mL). Following the administration of the second dose, no significant increases were objectified at days 28 and 42, compared to day 14 (25,256 AU/mL; IQR: 16,182 to 34,731 AU/mL and 25,508 AU/mL; IQR: 16,802 to 40,657 AU/mL, respectively;  $p > 0.999$ ) (Table 2 and Figure 1). Anti-NCP titers remained unchanged until day 42 (data not shown).

### 3.2. Influence of previous SARS-CoV-2 infection

The multivariable analysis revealed that previous SARS-CoV-2 status is an important confounder of the serological response at day 14 ( $\beta$  coefficient = 1.683;  $p < 0.0001$ ), 28 ( $\beta$  coefficient = 0.0696;  $p < 0.0001$ ) and 42 ( $\beta$  coefficient = 0.209;  $p < 0.0001$ ) (Supplemental Table 1).

Compared to naïve individuals, anti-Spike/RBD titers of previously infected volunteers were statistically higher at day 14 ( $p < 0.0001$ ). Higher medians were also observed at day 28 (25,256 AU/mL vs 14,989 AU/mL) and day 42 (25,508 AU/mL vs 15,591 AU/mL) but the differences were not statistically significant ( $p = 0.055$  and  $p = 0.152$ , respectively) (Table 2).

### 3.3. Influence of Age and Sex

Multivariable analysis highlighted a significant decreased response with age in the naïve group at day 14 ( $\beta$  coefficient = -0.0147;  $p < 0.0001$ ), which was less pronounced at day 28 ( $\beta$  coefficient = -0.008;  $p = 0.0381$ ) and no more significant at day 42 ( $\beta$  coefficient = -0.004;  $p = 0.0731$ ). This observation was also observed by means of Spearman correlations, both for women ( $r = -0.391$ ,  $p < 0.0001$ ) and men ( $r = -0.501$ ,  $p = 0.0006$ ) at day 14. These associations were attenuated following the second dose administration and remained only slightly statistically significant for women at day 28 ( $r = -0.204$ ,  $p = 0.042$ ) and for men at day 42 ( $r = -0.336$ ,  $p = 0.042$ ) (Figure 2).

**Table 2:** Median anti-Spike/RBD values at several time-points according to previous SARS-CoV-2 status, sex and age ( $\leq$  or  $>$  to 45 years). \*21 represents the lower limit of quantification of the test. Results below the value were reported as 21 for analytical purposes. Medians are presented with IQR. Statistical analyses were performed by Kruskal-Wallis test followed by Dunn's multiple comparison test.

Volunteers without previous infection to SARS-CoV-2					
AU/mL	Women $\leq 45$ years	Men $\leq 45$ years	Women $> 45$ years	Men $> 45$ years	p-value
Baseline	21 <sup>†</sup> (21-21)	21 <sup>†</sup> (21-21)	21 <sup>†</sup> (21-21)	21 <sup>†</sup> (21-21)	0.839
Day 14	718 (299-1111)	459 (284-1062)	271 (128-583)	170 (103-323)	$<0.0001$
Day 28	17343 (12203-26312)	14962 (8803-33829)	13841 (4913-23750)	15244 (2674-19048)	0.0755
Day 42	16843 (11768-23427)	15784 (9530-21602)	15372 (10071-24685)	9327 (5520-15784)	0.0269
Volunteers previously infected with SARS-CoV-2					
AU/mL	Women $< 45$ years	Men $< 45$ years	Women $> 45$ years	Men $> 45$ years	p-value
Baseline	293 (190-534)	260 (146-477)	304 (110-788)	462 (160-742)	0.849
Day 14	20055 (15047-35055)	26535 (15722-38628)	27721 (17683-33703)	25826 (16659-37683)	0.927
Day 28	22270 (16925-32220)	23236 (14921-44441)	29584 (22875-33881)	27402 (16448-51377)	0.905
Day 42	23057 (16857-39774)	22532 (15244-50159)	31359 (18646-50229)	26415 (16388-34968)	0.876

The **Table 2** reports anti-Spike/RBD median values when separating the groups for either sex and age ( $<$  or  $>$  45 years). We observed statistically significant differences between females  $<$  or  $>$  45 years (718 vs 264 AU/mL,  $p < 0.0001$ ) and between males  $<$  or  $>$  45 years (459 vs 170 AU/mL,  $p < 0.0001$ ). Among the same sex group, differences between the  $<$  45 and  $>$  45 age groups were no longer observed following administration of the second dose (**Figure 2** and **Table 2**).

In volunteers previously infected with SARS-CoV-2, multivariable analysis did not reveal any impact of age on the magnitude of the antibody response (**Supplemental Table 1**). This lack of correlation was also observed by simple linear regression analysis (**Figure 2**).

Multivariable analysis did not reveal any statistical differences between men and women at day 14 and 28, when analyzing the full cohort or when stratifying by previous COVID-19 infection status. However, at day 42, men from the SARS-CoV-2 naïve group showed a significantly lower antibody response ( $\beta$  coefficient = -0.129;  $p = 0.0394$ ) than women. No differences in sex were observed in volunteers previously infected with SARS-CoV-2 (**Supplemental Table 1**).

#### 3.4. Influence of ABO blood group

At day 14, a negative impact on the serological response of blood group AB in the whole cohort was observed ( $\beta$  coefficient = -0.3152;  $p = 0.045$ ) both in the female sex group

( $\beta$  coefficient = -0.476;  $p = 0.017$ ) and in the childbearing age group of this latter population ( $\beta$  coefficient = -0.538;  $p = 0.0032$ ). In the previously infected group, patients with B blood group also presented lower antibody titers at day 14 ( $\beta$  coefficient = -1.086;  $p = 0.001$ ). These differences were no longer observed after 28 or 42 days (**Supplemental Table 1**).

### 3.5. Other potential confounding factors

The multivariable analysis did not find any association between the serological response and the BMI in the two main subgroups of the study (i.e. COVID-19 positive or naïve). However, in childbearing age women (independently of the past SARS-CoV-2 status), multivariable analysis showed a positive correlation between their BMI and the serological response at day 14 ( $\beta$  coefficient = 0.0257;  $p = 0.0094$ ) but this correlation was not significant at later time-points. When looking at the childbearing age group, we could not see a difference in the serological response between women taking or not hormonal contraceptive agents. The same was observed with HRT in the menopausal group (**Supplemental Table 1**).

## 4. Discussion

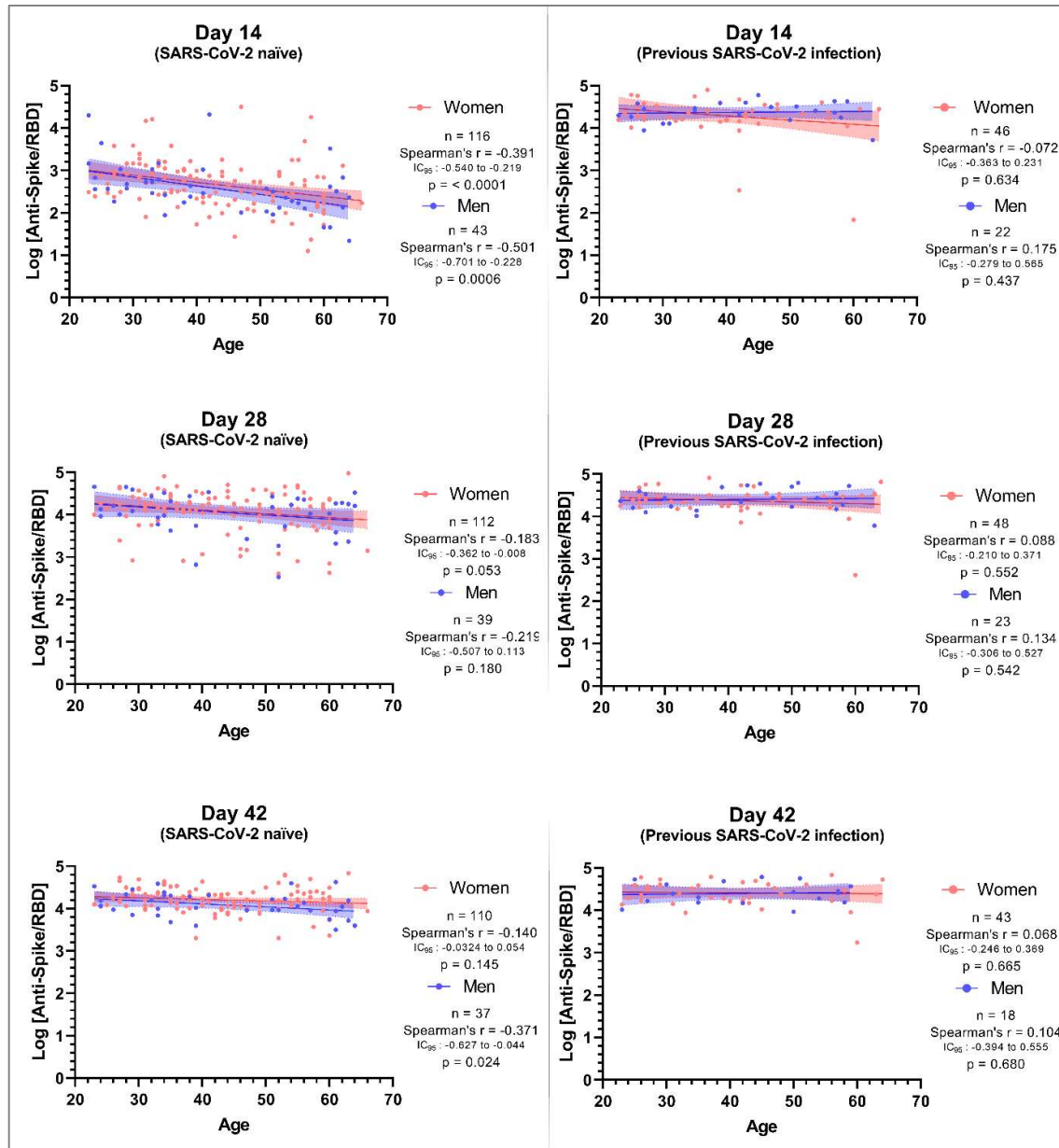
Our results confirm that people with a previous SARS-CoV-2 infection develop a more rapid and more important serological response than naïve subjects. After day 14, additional boosting effect of the second dose is not observed in this population. These results support some of the public health strategies being actually pursued. Indeed, to reach rapid control of the current pandemic, some countries adopted the strategy of postponing or omitting the second dose in this specific subgroup [4,5]. Whether a single dose could maintain comparable long-term immunity to the conventional scheme would need specific randomized or long-term observational studies.

At day 28, the whole cohort had seroconverted. In volunteers without history of past SARS-CoV-2 infection, the second dose led to a 40.5-fold increase in anti-Spike/RBD antibodies compared to levels measured 14 days after the first dose. No further increase was observed at day 42. Median values observed in this group were systematically lower compared to previously infected people and the multivariable analysis confirmed that the previous SARS-CoV-2 status is the most important confounding factor, at each time-point investigated in the present study.

It is now well-known that the symptoms and mortality of COVID-19 may vary according to several factors including ethnicity, sex, age, obesity and some comorbidities like deprivation, diabetes or severe asthma [6-9]. The humoral adaptive immunity is a key factor to prevent viral cell penetration and current vaccine candidates have demonstrated robust humoral responses. Plethora of studies have already investigated factors influencing the humoral vaccine response and these include intrinsic host factors (such as age, sex, genetics and comorbidities), extrinsic factors (such as nutrition, smoking, alcohol consumption) and previous exposition to the infectious agent concerned [5,10-13]. Nevertheless, due to the rapid development and approval of current COVID-19 vaccines used, there is still limited data concerning potential confounding factors in COVID-19 vaccines recipients.

Several studies reported that females develop a more robust immune responses compared to males. In 1967, Butterworth *et al.* reported that women produce higher levels of circulating immunoglobulins IgG and IgM than men, which was subsequently confirmed by multiple studies [14]. The biological reasons behind this could explain the observed female protection from COVID-19 fatal outcome [13]. On the other side, several recent studies reported sex-specific differences in the kinetic evolution of anti-SARS-CoV-2 antibody titers following SARS-CoV-2 infection. These data pointed out higher anti-Spike (IgG and IgA) and higher neutralizing antibodies in men, possibly explaining the higher risk of adverse COVID-19 outcome in this latter population through a stronger inflammatory

**Figure 2:** Simple linear regressions, with Spearman's correlation coefficients, between  $\log_{10}$ -transformed anti-Spike/RBD values and age in previous or naïve SARS-CoV-2 infected people.



response [15-17]. However, some of these studies lack strength because they do not analyse confounding factors in a multivariable setting.

Regarding the immune response to vaccination, recent data from Kontopoulou *et al.* did not show differences in anti-Spike/RBD titers between men and women, 14 days following BNT162b2 administration [18]. Kamal *et al.* reached the same conclusion 21 days after the first dose [19]. Accordingly, we did not observe significant differences at day 14 and 28. Nevertheless, in the present study, multivariable analysis identified men in the SARS-CoV-2 naïve group as lower responders compared to women at day 42. Terpos *et al.* also observed higher titers of neutralizing antibodies in women 22 and 50 days following first dose of the BNT612b2 vaccine. Of note, these observations concerned only octogenarians and the authors did not use a multivariable model adjusting the impact of sex for the effect of other variables, as we did [20]. More follow-up studies are therefore needed to analyze

if this difference between genders is confirmed or not, and eventually if it increases over time.

The concept of immunosenescence, a state characterized by the weakening of the immunological response related to age, is well-known and has been described for several existing vaccines [21-23]. Besides, decreased antibody production related to age was recently highlighted in several studies which measured anti-SARS-CoV-2 antibodies levels at a single time-point following a unique dose of BNT162b2 [18,19,24]. These data are conflicting with conclusions issued from the largest clinical trial which suggested similar efficacy among different age groups receiving twice administration of the latter vaccine [2]. Indeed, the multivariable analysis identified age as a factor negatively impacting the serological response to the vaccine at day 14 and 28 in the SARS-CoV-2 naïve group. This negative trend which stronger at day 14, has been further illustrated by the Spearman correlation analysis. This trend was however much less pronounced after the second dose and the impact of age was no more statistically significant at day 42. These observations are consistent with recent results obtained by Jalkanen *et al.* who observed that IgG anti-Spike and neutralizing antibodies decreased significantly in the older age group (55-65 years) compared to younger age groups (20-44 years) but neutralizing antibody levels were similar between the two groups three weeks after the second dose [25]. Furthermore, this negative correlation between age and the magnitude of the antibody response was not observed in our volunteers with an history of previous SARS-CoV-2 infection. Taken together, these observations support the fact that repeated antigen (directly inoculated or generated through cell mechanism) stimulations could lead to a normalization of the differences initially observed following one dose of BNT612b2. This further corroborates with the homogeneous clinical efficacy data observed across the whole age range in real-life settings [2].

We also investigated whether other intrinsic confounding factors could influence the humoral immune response. Several studies reported relationship between the A blood group or obesity and COVID-19 susceptibility [26-29]. On the other hands, obesity is frequently pointed-out as a risk factor for vaccine non-responsiveness and a recent research suggest that people with blood group B have relatively higher neutralizing antibody titers following SARS-CoV-2 infection [30,31]. Interestingly, AB blood group was identified in the full cohort, in the female group as well as in the childbearing age group as a negative predictor of vaccine response at day 14. Blood group B was also negatively correlated with anti-Spike/RBD concentrations in the previous SARS-CoV-2 group, at the same time-point. These observations, due to the limited size of the subgroups of interest, would require broader investigations to investigate whether these blood groups do indeed show a lower initial immune response.

Finally, no further relationships were found with other potential confounding factors like hormone (contraception or hormonal replacement therapy) intake in this small cohort.

Our study has two main limitations. The first is the limited size of the cohort. Therefore, the impacts (or not) of several confounding factors highlighted here are exploratory and will require larger cohort studies to confirm the observed associations. However, although this study is of limited power, it generates interesting hypotheses that corroborate with data observed in natural SARS-CoV-2 infection or in the context of other vaccination programs. The second limitation is that we could not collect all potential confounding data for the whole population included in this study. However, the absence of multicollinearity in the confounding factors investigated give us confidence in the association reported.

## 5. Conclusions

Among the multiple confounding factors investigated in this study, previous SARS-CoV-2 infection is the most powerful factor predicting the magnitude of the serological response. The age seems to play a role only in the SARS-CoV-2 naïve group and the negative

impact was further attenuated following administration of the second dose. B and AB blood groups were negatively associated with early (day 14) antibody response in some specific subgroups. Finally, being a male was found to be a factor of reduced serological response in SARS-CoV-2 naïve patients, but only at the latest sampling time (day 42); this observation requires therefore longer follow-up studies to confirm this trend.

**Supplementary Materials:** The following are available online at [www.mdpi.com/xxx/s1](http://www.mdpi.com/xxx/s1), Table S1: Multivariable linear regression for Anti-S/RBD IgG antibody titers.

**Author Contributions:** Conceptualization, Jean-Louis Bayart, Mélanie Closset, François Mullier, Jean-Michel Dogné, Julien Favresse and Jonathan Douxfils; Data curation, Jean-Louis Bayart, Laure Morimont and Clara David; Formal analysis, Jean-Louis Bayart, Laure Morimont, Mélanie Closset, Clara David, Julien Favresse and Jonathan Douxfils; Investigation, Jean-Louis Bayart, Laure Morimont and Julien Favresse; Methodology, Jean-Louis Bayart, Julien Favresse and Jonathan Douxfils; Project administration, Clara David and Jonathan Douxfils; Resources, Jean-Louis Bayart, Laure Morimont, Mélanie Closset, Grégoire Wieërs, Tatiana Roy, Vincent Gerin, Marc Elsen, Christelle Eucher, Sandrine Van Eeckhoudt, Nathalie Ausselet, Clara David, François Mullier, Jean-Michel Dogné and Julien Favresse; Supervision, Jonathan Douxfils; Validation, Jean-Louis Bayart, Clara David and Jonathan Douxfils; Writing – original draft, Jean-Louis Bayart, Marc Elsen and Jonathan Douxfils; Writing – review & editing, Laure Morimont, Mélanie Closset, Grégoire Wieërs, Tatiana Roy, Vincent Gerin, Christelle Eucher, Sandrine Van Eeckhoudt, Nathalie Ausselet, Clara David, François Mullier, Jean-Michel Dogné, Julien Favresse and Jonathan Douxfils. All authors have read and agreed to the published version of the manuscript." Please turn to the CRediT taxonomy for the term explanation. Authorship must be limited to those who have contributed substantially to the work reported.

**Funding:** This research received no external funding. Check carefully that the details given are accurate and use the standard spelling of funding agency names at <https://search.crossref.org/funding>. Any errors may affect your future funding.

**Data Availability Statement:** The data presented in this study are available on request from the corresponding author. The data are not publicly available due to ethical and privacy reasons.

**Acknowledgments:** The study group would like to thank all volunteers which were included in this study, the laboratory teams of the Clinique Saint-Luc Bouge, the CHU-UCL Namur and the Clinique Saint-Pierre Ottignies as well as the logistic team of QUALblood for their contribution to this work. We thank also Abbott and Roche for graciously providing the reagents for this study.

**Conflicts of Interest:** The authors declare no conflict of interest in relation with the present study. This study was not funded.

## References

1. Yan, Y.; Pang, Y.; Lyu, Z.; Wang, R.; Wu, X.; You, C.; Zhao, H.; Manickam, S.; Lester, E.; Wu, T. The COVID-19 Vaccines: Recent Development, Challenges and Prospects. *Vaccines* **2021**, *9*, 349.
2. Polack, F.P.; Thomas, S.J.; Kitchin, N.; Absalon, J.; Gurtman, A.; Lockhart, S.; Perez, J.L.; Pérez Marc, G.; Moreira, E.D.; Zerbini, C. Safety and efficacy of the BNT162b2 mRNA Covid-19 vaccine. *New England Journal of Medicine* **2020**, *383*, 2603-2615.
3. Favresse, J.; Eucher, C.; Elsen, M.; Tré-Hardy, M.; Dogné, J.-M.; Douxfils, J. Clinical performance of the Elecsys electrochemiluminescent immunoassay for the detection of SARS-CoV-2 total antibodies. *Clinical chemistry* **2020**, *66*, 1104-1106.
4. Press release : Une seule dose de vaccin pour les personnes ayant déjà été infectées par le SARS-CoV-2. . Available online: [https://www.has-sante.fr/jcms/p\\_3237456/en/une-seule-dose-de-vaccin-pour-les-personnes-ayant-deja-ete-infectees-par-le-sars-cov-2](https://www.has-sante.fr/jcms/p_3237456/en/une-seule-dose-de-vaccin-pour-les-personnes-ayant-deja-ete-infectees-par-le-sars-cov-2) (accessed on 9 March 2021).
5. Manisty, C.; Otter, A.D.; Treibel, T.A.; McKnight, Á.; Altmann, D.M.; Brooks, T.; Noursadeghi, M.; Boyton, R.J.; Semper, A.; Moon, J.C. Antibody response to first BNT162b2 dose in previously SARS-CoV-2-infected individuals. *The Lancet* **2021**, *397*, 1057-1058.
6. Strangfeld, A.; Schäfer, M.; Gianfrancesco, M.A.; Lawson-Tovey, S.; Liew, J.W.; Ljung, L.; Mateus, E.F.; Richez, C.; Santos, M.J.; Schmajuk, G. Factors associated with COVID-19-related death in people with rheumatic diseases: results from the COVID-19 global rheumatology alliance physician-reported registry. *Annals of the rheumatic diseases* **2021**.
7. Williamson, E.J.; Walker, A.J.; Bhaskaran, K.; Bacon, S.; Bates, C.; Morton, C.E.; Curtis, H.J.; Mehrkar, A.; Evans, D.; Inglesby, P. Factors associated with COVID-19-related death using OpenSAFELY. *Nature* **2020**, *584*, 430-436.
8. Poco, P.C.E.; Aliberti, M.J.R.; Dias, M.B.; Takahashi, S.d.F.; Leonel, F.C.; Altona, M.; Venys, A.L.; Shin-Ike, I.A.; Garcia, B.A.; Sumita, L.H. Divergent: age, frailty, and atypical presentations of COVID-19 in hospitalized patients. *The Journals of Gerontology: Series A* **2021**, *76*, e46-e51.

9. Seidu, S.; Gillies, C.; Zaccardi, F.; Kunutsor, S.K.; Hartmann-Boyce, J.; Yates, T.; Singh, A.K.; Davies, M.J.; Khunti, K. The impact of obesity on severe disease and mortality in people with SARS-CoV-2: A systematic review and meta-analysis. *Endocrinology, diabetes & metabolism* **2021**, *4*, e00176.
10. Klein, S.L.; Flanagan, K.L. Sex differences in immune responses. *Nature Reviews Immunology* **2016**, *16*, 626.
11. Klein, S.L.; Marriott, I.; Fish, E.N. Sex-based differences in immune function and responses to vaccination. *Transactions of the Royal Society of Tropical Medicine and Hygiene* **2015**, *109*, 9-15.
12. Giefing-Kröll, C.; Berger, P.; Lepperdinger, G.; Grubeck-Loebenstien, B. How sex and age affect immune responses, susceptibility to infections, and response to vaccination. *Aging cell* **2015**, *14*, 309-321.
13. Zimmermann, P.; Curtis, N. Factors that influence the immune response to vaccination. *Clinical microbiology reviews* **2019**, *32*.
14. Butterworth, M.; McClellan, B.; Aklansmith, M. Influence of sex on immunoglobulin levels. *Nature* **1967**, *214*, 1224-1225.
15. Grzelak, L.; Velay, A.; Madec, Y.; Gallais, F.; Staropoli, I.; Schmidt-Mutter, C.; Wendling, M.-J.; Meyer, N.; Planchais, C.; Rey, D. Sex differences in the evolution of neutralizing antibodies to SARS-CoV-2. *The Journal of Infectious Diseases* **2021**.
16. Korte, W.; Buljan, M.; Rösslein, M.; Wick, P.; Golubov, V.; Jentsch, J.; Reut, M.; Peier, K.; Nohynek, B.; Fischer, A. SARS-CoV-2 IgG and IgA antibody response is gender dependent; and IgG antibodies rapidly decline early on. *Journal of Infection* **2021**, *82*, e11-e14.
17. Mehew, J.; Johnson, R.; Roberts, D.; Harvala, H. Convalescent plasma for COVID-19: male gender, older age and hospitalisation associated with high neutralising antibody levels, England, 22 April to 12 May 2020. *Eurosurveillance* **2020**, *25*, 2001754.
18. Kontopoulou, K.; Ainatzoglou, A.; Nakas, C.; Papazisis, G. Immunogenicity after the first dose of the BNT162b2 mRNA Covid-19 Vaccine: real-world evidence from Greek healthcare workers. *Available at SSRN 3786138* **2021**.
19. Jabal, K.A.; Ben-Amram, H.; Beiruti, K.; Batheesh, Y.; Sussan, C.; Zarka, S.; Edelstein, M. Impact of age, gender, ethnicity and prior disease status on immunogenicity following administration of a single dose of the BNT162b2 mRNA Covid-19 Vaccine: real-world evidence from Israeli healthcare workers, December-January 2020. *Eurosurveillance* **2021**, *26*.
20. Terpos, E.; Trougakos, I.P.; Apostolakou, F.; Charitaki, I.; Sklirou, A.D.; Mavrianou, N.; Papanagnou, E.-D.; Liacos, C.-I.; Gumeni, S.; Rentziou, G. Age- and gender-dependent antibody responses against SARS-CoV-2 in health workers and octogenarians after vaccination with the BNT162b2 mRNA vaccine. *American journal of hematology* **2021**.
21. Höpping, A.M.; McElhaney, J.; Fonville, J.M.; Powers, D.C.; Beyer, W.E.; Smith, D.J. The confounded effects of age and exposure history in response to influenza vaccination. *Vaccine* **2016**, *34*, 540-546.
22. Castle, S.C. Clinical relevance of age-related immune dysfunction. *Clinical Infectious Diseases* **2000**, *31*, 578-585.
23. Chen, W.H.; Kozlovsky, B.F.; Effros, R.B.; Grubeck-Loebenstien, B.; Edelman, R.; Sztein, M.B. Vaccination in the elderly: an immunological perspective. *Trends in immunology* **2009**, *30*, 351-359.
24. Predecki, M.; Clarke, C.; Brown, J.; Cox, A.; Gleeson, S.; Guckian, M.; Randell, P.; Dalla Pria, A.; Lightstone, L.; Xu, X.-N. Effect of previous SARS-CoV-2 infection on humoral and T-cell responses to single-dose BNT162b2 vaccine. *The Lancet* **2021**, *397*, 1178-1181.
25. Jalkanen, P.; Kolehmainen, P.; Häkkinen, H.; Huttunen, M.; Tähtinen, P.; Lundberg, R.; Maljanen, S.; Reinholm, A.; Tauriainen, S.; Pakkanen, S. COVID-19 mRNA vaccine induced antibody responses and neutralizing antibodies against three SARS-CoV-2 variants. **2021**.
26. Zhao, J.; Yang, Y.; Huang, H.; Li, D.; Gu, D.; Lu, X.; Zhang, Z.; Liu, L.; Liu, T.; Liu, Y. Relationship between the ABO Blood Group and the COVID-19 Susceptibility. *Clinical Infectious Diseases* **2020**.
27. Wu, Y.; Feng, Z.; Li, P.; Yu, Q. Relationship between ABO blood group distribution and clinical characteristics in patients with COVID-19. *Clinica Chimica Acta* **2020**, *509*, 220-223.
28. Belančić, A.; Kresović, A.; Rački, V. Potential pathophysiological mechanisms leading to increased COVID-19 susceptibility and severity in obesity. *Obesity medicine* **2020**, *19*, 100259.
29. Dietz, W.; Santos-Burgoa, C. Obesity and its implications for COVID-19 mortality. *Obesity* **2020**, *28*, 1005-1005.
30. Young, K.M.; Gray, C.M.; Bekker, L.-G. Is obesity a risk factor for vaccine non-responsiveness? *PloS one* **2013**, *8*, e82779.
31. Bloch, E.M.; Patel, E.U.; Marshall, C.; Littlefield, K.; Goel, R.; Grossman, B.J.; Winters, J.L.; Shrestha, R.; Burgess, I.; Laeyendecker, O. ABO blood group and SARS-CoV-2 antibody response in a convalescent donor population. *Vox sanguinis* **2021**.