

Asynchronous Embryo Transfer Followed by Comparative Transcriptomic Analysis of Conceptus Membranes and Endometrium Identifies Processes Important to the Establishment of Equine Pregnancy

Charlotte Gibson¹, Marta de Ruijter-Villani¹, Stefan Bauersachs², Tom A.E. Stout^{1*}

¹Utrecht University, Faculty of Veterinary Medicine, Department of Clinical Sciences, Yalelaan 112, 3584CM Utrecht, Netherlands

²Vetsuisse Faculty Zurich, University of Zurich, Eschikon 27, Agrovet-Strickhof, 8315 Lindau (ZH), Switzerland.

*Corresponding author:

T.A.E. Stout,
Utrecht University,
Faculty of Veterinary Medicine,
Department of Clinical Sciences,
Yalelaan 112,
3584CM Utrecht,
The Netherlands
Tel: 0031 30 2533080
Fax: 0031 30 2537970
e-mail: t.a.e.stout@uu.nl

Abstract

Pre-implantation horse conceptuses require nutrients and signals from histotroph, the composition of which is regulated by luteal progesterone and conceptus-secreted factors. To distinguish progesterone and conceptus effects we shortened the period of endometrial progesterone-priming by asynchronous embryo transfer. Day 8 embryos were transferred to synchronous (day 8) or asynchronous (day 3) recipients, and RNA sequencing was performed on endometrium and conceptuses recovered 6 and 11 days later (embryo days 14 and 19). Asynchrony resulted in many more differentially expressed genes (DEGs) in conceptus membranes (3473) than endometrium (715). Gene ontology analysis identified upregulation in biological processes related to organogenesis and preventing apoptosis in synchronous conceptuses on day 14, and in cell adhesion and migration on day 19. Asynchrony also resulted in large numbers of DEGs related to 'extracellular exosome'. In endometrium, genes involved in immunity, the inflammatory response, and apoptosis regulation were upregulated during synchronous pregnancy and, again, many genes related to extracellular exosome were differentially expressed. Interestingly, only 14 genes were differentially expressed in endometrium recovered 6 days after synchronous versus 11 days after asynchronous transfer (day 14 recipient in both). Among these, *KNG1* and *IGFBP3* were consistently up-regulated in synchronous endometrium. Furthermore bradykinin, an active peptide cleaved from *KNG1*, stimulated prostaglandin release by cultured trophectoderm cells. The horse conceptus thus responds to a negatively asynchronous uterus by extensively adjusting its transcriptome, whereas the endometrial transcriptome is modified only subtly by a more advanced conceptus.

Key words: horse, asynchronous embryo transfer, conceptus, endometrium, transcriptome, exosome

Introduction

Early pregnancy in the horse is characterized by an unusually long preimplantation period, encompassing a number of enigmatic events [1]. In particular, the molecule or stimulus that the horse conceptus uses to signal its presence and ensure maternal recognition of pregnancy (MRP) has not yet been identified, nor do we fully understand how the conceptus guides endometrial preparation for implantation. Soon after arriving in the uterus on day 6 after ovulation [2], the equine embryo becomes completely enveloped by an acellular glycoprotein capsule, which has been proposed to help it remain unattached and mobile within the uterine cavity and to act as a 'mail box' for regulating the exchange of signaling molecules [3-5]. Conceptus mobility persists until day 16 of gestation [6] and appears to be essential for MRP, since restricting migration to a single uterine horn results in failure to avert luteolysis [7]. In the absence of pregnancy, luteolysis occurs between approximately days 13 and 16 as a result of pulses of prostaglandin F₂α (PGF₂α) released by the endometrium following the establishment of an oxytocin-PGF₂α positive feedback loop [8,9]. To prevent luteal regression, the embryo's MRP signal must prevent the cyclical increase in oxytocin sensitivity that starts at approximately day 10 after ovulation [10,11]. Although the identity of the equine embryonic MRP signal(s) remains unknown [12], it is increasingly clear that MRP involves the transient suppression of PGF₂α release by a combination of inhibiting prostaglandin-endoperoxidase-synthase 2 expression (PTGS2; the rate-limiting enzyme in PGF₂α synthesis) and delaying the upregulation of the endometrial oxytocin receptors critical to the oxytocin-PGF₂α loop needed to generate luteolytic pulses of PGF₂α [8,10,13].

Recent transcriptomic and proteomic analyses have improved our understanding of embryo-maternal communication during the conceptus migration and MRP phase. Studies have compared gene expression in endometrium between cycling and pregnant mares on days 8 and 12 [14,15], days 9, 11 and 13 [16], days 12, 14, 16 and 18 [17] or on day 13.5 [18], and between conceptus membranes on days 8, 10, 12 and 14 [19]. A further study looked for possible relationships (e.g. ligand-receptor associations) between the endometrial and conceptus transcriptomes on day 16 [20]. The proteomic profile of day 9 and 10 blastocyst secretions and blastocoele fluid [21], and day 13 uterine luminal (ULF; cyclic and pregnant mares) and yolk sac (blastocoele) fluid have also been reported [22]. The latter studies identified differences in the ULF induced by the presence of a conceptus, and identified proteins secreted by the endometrium or the conceptus into the ULF or yolk sac fluid. Gene ontology analysis for the endometrial transcriptome has revealed that early pregnancy is associated with changes in biological processes including "angiogenesis/vascular remodeling", genes influenced by steroid hormones (estradiol and progesterone) and by prostaglandin signaling [15], and genes related to cell communication, cell adhesion and response to stimuli [20]. In the conceptus, genes involved in developmental processes and in responses to external stimuli (hormones and endometrial factors)

were highly represented [20]. Other processes, such as “lipid biosynthetic processes” and “fatty acid metabolic process” were also up-regulated during conceptus development [19]. Comparative proteomics similarly highlighted changes in functional categories of ULF proteins including developmental processes, “binding”, response to a stimulus and lipid and cholesterol activity [21,22].

Besides the conceptus, the major regulators of endometrial physiology and the establishment of uterine receptivity for implantation are the ovarian steroid hormones estrogens and, in particular, progesterone (P4)[23]; P4 helps maintain or alter the uterine environment in ways favorable to embryo growth and development, e.g. by regulating histotroph quality and quantity [24,25]. In sheep and cattle, induction of an earlier than normal post-ovulatory rise in progesterone (by exogenous P4 administration) leads to an earlier onset and more rapid elongation of the conceptus and secretion of the MRP factor (interferon τ); early post-ovulation P4 administration has therefore been used to try to distinguish the effects of P4-priming on endometrial function and the development of receptivity for implantation from those induced by embryo-secreted factors [26-28]. In horses, the post-ovulatory rise in P4 is much more rapid (approximately 24h after ovulation [29]) than in cattle (approximately 5 days [30]) such that there is very little scope for advancing the onset of the progesterone rise to accelerate conceptus development or identify P4-induced endometrial factors that promote conceptus growth. An alternative approach to temporally separating P4 and conceptus-induced effects on endometrial function is asynchronous embryo transfer (ET), i.e. transferring an embryo to a more advanced (positive asynchrony) or retarded (negative asynchrony) uterine environment. In sheep and cattle, an embryo-endometrium asynchrony of as little as 2 days either retards (negative asynchrony) or accelerates (positive asynchrony) conceptus development; however, both compromise embryo viability and increase the incidence of pregnancy loss [31-33]. By contrast, horse embryos tolerate a remarkable degree of negative (≥ 5 days) but not positive (≤ 2 days) uterine asynchrony [34]. Indeed, in clinical ET programs, recipient mares ovulating between 1 day before and up to 5 days after the donor offer similar likelihoods of establishing and maintaining pregnancy [35,36]. However, while horse embryos can be transferred to recipient mares that ovulated up to 5 days after the donor without compromising embryo survival, conceptus development is markedly delayed by asynchrony of more than 4 days [34,37,38]. For example, the embryonic disc (day 14) and embryo proper (day 19) are smaller and less well developed in conceptuses resulting after transfer of day 8 horse embryos into a 5-day negatively asynchronous recipient compared to a synchronous recipient [38]. In addition, the pregnancy stage-related up-regulation in mRNA expression for a range of imprinted genes, glucose and amino acid transporters is delayed in conceptuses that develop in a negatively asynchronous uterus [38-40].

In the current study, day 8 embryos were transferred to recipient mares that ovulated either on the same day (synchronous) or 5 days after (asynchronous) the donor, and RNA sequencing (RNA-seq)

was performed to compare the transcriptome in endometrium and conceptus membranes recovered 6 and 11 days after ET. In this way, the endometrium of asynchronous recipients would be exposed to a shorter period of P4 priming, but an identical period of conceptus interaction; the hypothesis was that the difference in the duration of P4 priming would enable us to dissect some of the roles of progesterone and the embryo in regulating uterine preparation for implantation and signaling to the conceptus. Two of the molecules identified by the RNA-seq analysis as consistently up-regulated in the endometrium of synchronous compared to asynchronous recipients, namely kininogen 1 (*KNG1*) and insulin-like growth factor binding protein 3 (*IGFBP3*), were selected for functional studies. We hypothesized that these two molecules would stimulate conceptus prostaglandin secretion (*KNG1*), cell adhesion and proliferation (*IGFBP3*) and thereby contribute to the establishment of uterine receptivity and/or help the conceptus match its developmental stage to that of the uterus.

Material and Methods

Animals and tissue collection

All animal procedures were approved by Utrecht University's Animal Experimentation Committee (permit number 2012.III.02.020). Material for the transcriptomic analysis was collected from 22 warmblood mares, and used in previous studies [38-40]; material for the *in vitro* experiments was harvested from an additional 5 mares. Mares were between 4 and 15 years of age and maintained on pasture with *ad libitum* access to grass, hay and water. During estrus, the mares were monitored every other day by transrectal ultrasonography (MyLab30 ultrasound machine equipped with a 7.5 MHz linear transducer; Esaote, Maastricht, The Netherlands) [41]. When the dominant follicle exceeded 35 mm in diameter, mares were inseminated with a minimum of 500×10^6 sperm cells from a single fertile stallion, and thereafter examined daily until ovulation was observed; insemination was repeated every second day until ovulation. Mares used as recipients for ET were monitored similarly to determine ovulation date, but were not inseminated. For the ET experiment, the degree of synchrony or asynchrony between the donor and recipient mares was managed by manipulating the estrous cycle using a PGF2 α analogue (37.5 μ g D-cloprostenol; Genestranvet: Eurovet Animal Health B.V., Bladel, The Netherlands) to induce luteolysis, and human chorionic gonadotrophin to induce ovulation (hCG; 1500 i.u. Chorulon: Intervet, Boxmeer, The Netherlands).

Embryo collection and transfer

For the ET experiment, blastocysts were recovered from donor mares by uterine lavage 8 days after ovulation, as described previously [42]; recovered embryos were washed in holding medium (Syngro; Bioniche Animal Health, Pullman, WA, USA). In total, 20 pregnancies were established after transfer of day 8 embryos (grade 1-2) to recipient mares that had either ovulated on the same day as

the donor (synchronous; n=10), or 5 days after the donor mare (asynchronous; n=10). Conceptuses were then recovered on day 14 or day 19 of development (n=5 per group). Day 14 conceptuses were recovered 6 days after ET by uterine lavage via a sterile endotracheal tube, and day 19 conceptuses were recovered 11 days after ET using an endoscopically-guided net, after puncture of the membranes and aspiration of the yolk-sac fluid using a sharpened PTFE catheter [41]. Following conceptus recovery, an endometrial biopsy was collected, using alligator forceps (141965; Jørgen Kruuse A/S, Langeskov, Denmark), from the base of one or other uterine horn for day 14 conceptuses (mobile phase), or from the site of conceptus apposition for day 19 conceptuses (fixed location; n=5 per group) under video-endoscopic guidance. For conceptus membrane culture, pregnancy status was monitored by transrectal ultrasonography from day 14 after ovulation, and conceptuses were recovered on day 19 by uterine lavage via a sterile endotracheal tube (n=5 conceptuses).

Conceptuses and endometrial biopsies were washed with sterile 0.9% NaCl. Under a stereomicroscope, the blastocyst capsule was removed from the conceptuses and the embryonic disc region, or embryo proper, were dissected from the conceptus membranes using microsurgical scissors. On day 14, conceptus membranes consisted primarily of bilaminar yolk-sac (endoderm and trophoderm) with a relatively small trilaminar area. Within day 19 conceptuses, mesoderm formation had progressed appreciably, resulting in trilaminar membrane over the bulk of the conceptus. The bilaminar and trilaminar yolk-sac regions of day 19 conceptus membranes were not separated for analysis. Yolk-sac membranes from ET conceptuses were snap frozen in liquid nitrogen and stored at -80°C, whereas the conceptus membranes used for culture were kept in warm PBS prior to culture.

RNA extraction, DNA library preparation and sequencing

Total RNA was extracted using the AllPrep DNA/RNA/Protein Mini kit (Qiagen, Venlo, The Netherlands). Endometrium and conceptus membranes (20-40 mg) were homogenized in 600 µl lysis buffer and total RNA was eluted with 40 µl RNase-free water, and treated with DNase I for 30 min at 37°C and 10 min at 65°C (1 IU/µg; RNase-free DNase kit; Qiagen). Total RNA quantity and quality was determined respectively by spectrometry (NanoDrop ND 1000; Isogen Life Sciences, De Meern, The Netherlands) and using a BioAnalyzer 2100 (Agilent Technologies, Palo Alto, CA) with a RNA 6000 Nano Chip, according to the manufacturers' instructions. The best 4 samples from each group were selected, and DNA library preparation was performed using the Illumina Truseq Stranded Total RNA low-throughput RNA Sample Prep Kit with 500 ng of total RNA, following depletion of ribosomal RNA using the Ribo-Zero Human/Mouse/Rat kit. DNA library quality was controlled using a BioAnalyzer 2100, the Agilent DNA 1000 and the Qubit assay. Next, bar-coded endometrial samples and conceptus membrane samples were pooled separately. The sequencing was performed at the Utrecht Sequencing

Facility on an Illumina Next Seq 500 (San Diego, USA) with a single-read mode and a read length of 75 bases.

RNA-seq analysis and bioinformatics

The Fastq files were analyzed, and the reads were cleaned and trimmed using Trimmomatic with the following parameters: 3'-end trimming with sliding window (size = 4, average quality score \geq 28), headcrop at the 5'-end (number of bases = 3) and minimum length read (50 bases). The reads were aligned to the horse genome (equuCab2) using Tophat (v2.0.11, splice junction mapper for RNA-seq reads). Next, the number of reads mapped to the exon region of each gene was evaluated using QuasR qCount and only the genes with more than 10 counts were used for statistical analysis. Differentially expressed genes (DEG) were detected using the DESeq2 tool in R and we compared d14 syn vs d14 asyn, d19 syn vs d19 asyn and day 14 syn vs day 19 asyn. Significance thresholds were set as follows: false discovery rate (FDR) $<$ 5 % and a log₂ fold change (FC) greater than 1.4 or lower than - 1.4 (equivalent to a fold change of 0.49 or -0.49) and P-Adjusted less than 0.04. Gene ontology clustering was performed using the Database for Annotation, Visualization and Integrated Discovery (DAVID, v6.8) using the functional annotation chart tool [43].

Quantitative RT-PCR

RT-qPCR was performed using the same RNA samples as used for sequencing. Total RNA (1 μ g) was reverse-transcribed to cDNA using Superscript III (Invitrogen) followed by qRT-PCR as described previously [38]. Primers were produced at Eurogentec (Seraing, Belgium) and specificity was tested by DNA sequencing (ABI PRISM 310 Genetic analyzer; Applied Bio-System, Foster City, CA). Real-time PCR was carried out in 15 μ l of reaction mix including 7.5 μ l of IQ SYBR[®] Green Supermix (BioRad; Veenendaal, The Netherlands), 0.5 mM of primer (forward and reverse; Supp. Table 1), and 1 μ l of cDNA, on an IQ5 Real-Time PCR detection System (BioRad). For each gene, a melting curve and standard curve were performed to verify product specificity and enable expression quantification. Relative gene expression was expressed as the ratio of target gene expression to the geometric mean for the housekeeping genes GAPDH, HPRT1 and SRP14 for conceptus samples, and GAPDH and SRP14 for endometrial samples. Finally, the log₂ fold change between the synchronous and asynchronous samples was calculated for day 14 and day 19 of pregnancy, and an independent T-test was performed.

Culture of conceptus membrane cells

Conceptus membranes were washed 3 times in PBS and then transferred into M199 medium (M199-22340 with HEPES; ThermoFisher Scientific, Paisley, UK) supplemented with 1 mg/ml Collagenase A (Sigma-Aldrich; Zwijndrecht, the Netherlands) and 0.1% P/S (Penicillin=10 000 IU/ml;

Streptomycin=10 000 µg/ml), the membranes were cut into small pieces using a razor blade and passed through sterile 18 and 21-gauge needles to further disrupt cell-cell attachment. In total, the membranes were maintained for 30 min at 37°C in collagenase containing medium. The cells were then washed twice in standard culture medium (M199 supplemented with 20% fetal bovine serum and 0.1% P/S) and centrifuged at 500G for 5 min. Finally, the cells were plated in T-25 flasks with standard culture medium for 3 days at 37°C in a humidified atmosphere containing 5% CO₂-in-air. The culture medium was replaced every other day, and the cells were used for *in vitro* assays after 1 or 2 passages. All trophectoderm function experiments were performed on cells obtained from three different conceptuses, with each condition performed in triplicate.

Cell attachment assay

Culture medium was replaced by serum-free medium (M199 with 0.01% P/S) for 24 h. A 24-well plate containing a glass coverslip in each well was coated overnight at 4 °C with 450 µl of the following proteins: BSA (Sigma-Aldrich: 1000 ng/ml in PBS), fibronectin from bovine plasma (F1141, Sigma-Aldrich: 62, 125, 250, 500 and 1000 ng/ml in PBS) or recombinant human IGFBP3 (10430H07H50, Sino Biological Inc., Beijing, China: 62, 125, 250, 500 and 1000 ng/ml in PBS), where IGFBP3 was selected on the basis of the RNA-seq results. Next, non-specific binding to the wells was blocked with heat-denatured BSA (10 mg/ml in PBS) for 1 h at room temperature (RT). Freshly trypsinized cells (n = 47 000 cells in 500 µl serum-free media) were then added to each well and allowed to attach for 2 h (37°C, 5% CO₂). After removing the medium, the wells were washed with PBS to remove any unattached cells, and attached cells were fixed using methanol:acetone (1:1) for 20 min at RT. Cell nuclei were stained with DAPI (1:50 in PBS) for 30 min at RT in the dark. Coverslips were mounted with Vectashield and 5 non-overlapping sections were imaged using a fluorescence microscope (Olympus BX60; Olympus Nederland B.V., Leidschendam, the Netherlands) equipped with a Leica DFC425C camera (Leica, Wetzlar, Germany) to count the number of cells attached per mm². The effect of the different conditions on cell attachment was examined by one-way ANOVA (P<0.05).

Cell proliferation assay

In a 24-well plate containing glass coverslips, freshly trypsinized cells were allowed to attach for 6 h (n = 30 000 cells in 500 µl standard culture medium) before replacing the medium with 500 µl serum-free medium for 24 h. Next, cells were treated with different concentrations of IGFBP3 (1, 10, 100 and 1000 ng/ml in 500 µl serum-free medium), 500 µl serum-free medium or with 500 µl normal culture medium (20% FCS, 0.1% P/S, M199). At the same time, BrdU (5-Bromo-2'-deoxyuridine; B5002, Sigma-Aldrich; final concentration: 10 µM) was added to each well, and the cells were then cultured for 24 h at 37°C in a humidified atmosphere of 5% CO₂-in-air. Following incubation, the cells were rinsed with

PBS and fixed using methanol:acetone (1:1) for 20 min at RT. The cells were then treated with HCl (2M) for 20 min at RT, followed by a blocking step (PBS/BSA 0.5%) for 10 min. Finally, the cells were stained with anti-BrdU (FITC mouse anti-BrdU; BD Biosciences, San Jose, CA: diluted 1:50 in PBS) for 2 h at RT and with DAPI (1:50 in PBS) for 30 min at RT. Coverslips were mounted with Vectashield and 5 non-overlapping sections were imaged using a fluorescence microscope (Olympus BX60 with a Leica DFC425C camera) to count both the total cell number (DAPI) and the number of proliferating cells (BrdU positive) per mm². The effects of culture medium and IGFBP3 concentration on cell proliferation were analyzed by two-way ANOVA ($P < 0.05$).

Bradykinin stimulation

Freshly trypsinized cells were seeded into 24-well plates ($n = 30\,000$ cells in 500 μ l normal culture medium) and incubated for 24 h (37°C, 5% CO₂). The medium was replaced by serum-free medium and, after 24 h, cells were treated with 500 μ l bradykinin (catalogue number B3259-1MG, Sigma-Aldrich: 0.5, 1, 10, 100 ng/ml in M199) for 6 h and 24 h, or with 500 μ l serum-free medium for 6 h (negative control). Culture medium was collected at the appropriate times and stored at -80°C for subsequent prostaglandin (PGs) concentration analysis.

Prostaglandin assay

PGs released from cultured conceptus membrane cells were assayed using High-performance liquid chromatography-tandem mass spectrometry (HPLC-MS/MS), as described previously [44,45]. A set of standard samples was prepared by adding stock PG solution to serum-free medium (M199, 0.1% P/S) to obtain final concentrations of 6.25, 12.5, 25, 50, 100 and 200 pg/ μ l. An internal standard (IS; 16,16-dimethyl-PGF₂ α , 40 pg/ μ l) was added to each standard sample (100 μ l per sample). Chromatograms for standards were used to establish characteristic retention times (RTs) for each compound, while the calibration lines were used to verify that the MS signal was linear for all analytes over this range. The peak-area ratios of each analyte to the IS were calculated and plotted against the concentration of the calibration standards. Calibration lines were calculated using the least squares linear regression method.

Extraction of PGs from (trophectoderm cell conditioned) culture medium was performed as described previously [45]. Culture medium was thawed, and 200 μ l was mixed with 100 μ l of IS, 200 μ l of ammonium acetate (0.2M, pH 3.3) and 800 μ l of ethyl acetate (0.0002 % butylated hydroxytoluene) by vortexing for 1 min. The mixture was then centrifuged at 12100 x g for 5 min and chilled to -80°C. After 60 min, the upper ethyl acetate layer was pipetted into a new tube. The ethyl acetate extraction procedure was repeated once more. The pooled samples were then placed in a Speedvac system until the solvent was completely evaporated; the residue was dissolved in 40 μ l of 30% methanol. Thirty μ l

of each sample was transferred to a polypropylene microwell plate and stored at -20°C until HPLC-MS/MS analysis was performed.

For each sample, the ratio of the peak area of the internal standard to the peak area for PGE₂, PGF₂ α and 6-keto PGF₁ α was measured in pg/ml. For all samples, we measured the log₂ fold change of the ratio of bradykinin stimulation to the negative control. The effects of the duration of treatment (time) and the concentration of bradykinin (stimulation) used on PGE₂, PGF₂ α and 6-keto PGF₁ α release were tested using a linear mixed model (R Studio). Time and stimulation were used as fixed factors, individual embryo culture was included as a random effect, and we included a nested random effect of stimulation within time. An ANOVA was used to examine whether the values of the estimates obtained in the linear mixed model were significant ($P < 0.05$).

Results

RNA-seq analysis and gene ontology

After initial analysis of endometrial transcript data, pair-wise correlation heat maps were used to cluster the data from individual samples; this was followed by hierarchical clustering (HCL) of the log₂ fold changes of differentially expressed genes (DEGs). From the HCL, different general patterns of expression could be observed between sample groups (Figure 1). Endometrial samples 9, 10, 11 and 12 (day 19 synchronous) clustered together, as did samples 5, 6 and 7 (day 14 asynchronous). On the other hand, samples 1, 2 and 4 (day 14 synchronous) and samples 13, 14 and 15 (day 19 asynchronous) were intermingled in one large cluster with similar expression profiles; the common denominator for these samples was that they were all recovered from mares on day 14 after ovulation. Two samples, 3 and 8, exhibited a very different pattern of expression to the other members of their respective groups (i.e. were outliers) and were therefore not included in subsequent statistical analyses.

We compared endometrial gene expression between synchronous and asynchronous recipients on day 14 (6 days after ET: D14-syn/asyn) and day 19 (11 days after ET: D19-syn/asyn) of conceptus development, and between day 14 synchronous and day 19 asynchronous (D14-sync/D19-asyn; both sets of recipients on day 14 after ovulation). In total, 15502 transcripts were detected in endometrial samples; these included 523 DEGs for D14-syn/asyn, 715 DEGs for D19-syn/asyn but only 14 DEGs for D19-asyn/D14-syn (Fold change > 1.4 ; FDR $> 5\%$; P-adjusted < 0.05 : Supplementary Table 2). Among these DEGs 413, 600 and 6 were specific to their respective comparison. The numbers of up- and down-regulated genes are shown in Table 1, and the overlap of DEGs between D14-syn/asyn, D19-syn/asyn and D19-asyn/D14-sync is depicted in Figure 2. Only 3 annotated genes (*IGFBP3*, *KNG1* and *FAM118B*) were differentially expressed between all three comparison groups, while there were 5 additional DEGs in common between D19-syn/asyn and D14-syn/D19-asyn, and 107 DEGs in common between D14-syn/asyn and D19-syn/asyn.

A similar analysis was performed for conceptus membrane transcriptomes. In this case, conceptuses from the same group (synchronous or asynchronous and day of recovery) clustered together with grossly similar patterns of expression, as shown by the pair-wise correlation heat map (Figure 3A) and the HCL (Figure 3B). Day 19 synchronous and day 19 asynchronous conceptuses clustered into two very distinct groups, whereas day 14 synchronous and day 14 asynchronous conceptuses had more similar expression profiles. A total of 13591 transcripts were detected, of which 556 were classified as DEGs for D14-syn/asyn (Fold change > 1.4; FDR > 5 %; P-adjusted < 0.05), 3472 DEGs for D19-syn/asyn and 3646 DEGs for D14-sync/D19-asyn with 236, 2239 and 2434 exclusive to the respective pairwise comparisons (Supp. Table 3). The numbers of up- and down-regulated genes are shown in Table 1. We identified 98 genes that were differentially expressed in all three comparisons, 121 additional DEGs shared between D14-syn/asyn and D19-syn/asyn, 100 additional DEGs in common between D14-syn/asyn and D14-sync/D19-asyn, and 1013 DEGs in common between D19-syn/asyn and D14-sync/D19-asyn (Figure 4).

Gene ontology analysis

The DEGs were analysed using the DAVID Functional Annotation Chart tool for gene ontology (GO) classification, to identify overrepresented functional terms among up-regulated and/or down-regulated genes in synchronous pregnancy. In the endometrium, the biological processes 'activation of MAPK activity', and the cellular components 'blood microparticle' and 'integral component of plasma membrane' were overrepresented among up-regulated genes on both day 14 and 19 of conceptus development (Figure 5). The molecular functions NADP binding and oxidoreductase, and the cellular components lamellipodium were overrepresented among down-regulated genes in synchronous pregnancies on both days 14 and 19. Functional terms including proteinaceous extracellular matrix, calcium ion and peptide binding, cell-cell signalling, cell migration and regulation of cell growth were enriched among the genes up-regulated in endometrium on day 14 of conceptus development. Functional terms specifically enriched among up-regulated genes on day 19 included extracellular exosome, the inflammatory response, immunity, cellular response to vascular endothelial growth, negative regulation of apoptotic process and membrane. Functional terms overrepresented among down-regulated genes on day 14 included cellular components such as ion transport and extracellular exosome. On day 19 of conceptus development, in utero embryonic development, cell adhesion, lipid metabolism, oxidoreductase and zinc ion binding were overrepresented among the down-regulated genes in synchronous endometrium (Figure 5). Too few genes were differentially expressed between endometrium groups in the D14-sync/D19-asyn comparison to identify functional categories.

In the conceptus membranes, many more functional categories were identified, largely because many more genes were classified as differentially expressed between the synchronous and asynchronous conditions (Figure 6). The categories overrepresented among up-regulated genes on both days were extracellular exosome and blood microparticle. Functional categories overrepresented among the up-regulated genes in day 14 synchronous conceptuses included central nervous system and metanephros development, retina layer formation, blood coagulation, regulation of vasoconstriction, and regulation of exocytosis and protein secretion. On day 19, categories enriched for up-regulated genes included cell adhesion and cell-matrix adhesion, focal adhesion, regulation of cell migration and cell shape, and organelles (Golgi apparatus, endoplasmic reticulum). Molecular functions such as calcium ion binding, transferase and kinases, were also enriched in synchronous conceptuses on day 19 of development. In day 14 conceptus membranes, the functional terms overrepresented among down-regulated genes of synchronous conceptuses included the biological processes translation and protein heterotetramerization, and other processes related to nuclear function such as nucleosome assembly, DNA binding and the cellular components nucleus, nucleosome core, and chromosome. Clusters of down-regulated genes on day of 19 of synchronous conceptus development included cellular components related to extracellular exosome, and mitochondria (e.g. mitochondrion, mitochondrial inner membrane, respiratory chain complex I), and components related to the lysosomal membrane and oxidoreductase function and certain metabolic processes. Genes associated with the biological processes 'defense response to viruses' and antiviral defense were also overrepresented among the down-regulated genes on day 19.

RNA-seq validation by qRT-PCR

To validate the RNA-seq results, quantitative RT-PCR was performed for 11 genes selected specifically for each tissue (Table 2: endometrium; Table 3: conceptus). We compared gene expression on day 14 and 19 of conceptus development between synchronous and asynchronous ET, and measured the log₂ fold change. Overall, changes in gene expression (up- or down-regulated) identified by RNA-seq (P-adjusted < 0.05) were confirmed by qRT-PCR, although the difference was not always statistically significant in the qRT-PCR comparisons (P-value > 0.05).

In endometrial samples, *LIFR*, *SLC43A2* and *SLC5A1* transcripts showed no significant difference between conditions in the RNA-seq analysis, findings that were replicated by qRT-PCR. In synchronous endometrium on day 14 of pregnancy, *PTGFR* mRNA abundance was down-regulated (P-adjusted < 0.001; P-value = 0.016) and *SLC2A1* was up-regulated (P-adjusted < 0.001; P-value = 0.001), while on day 19 *LIF* was up-regulated (P-adjusted < 0.001; P-value = 0.001) and *SLC1A1* was down-regulated (P-adjusted < 0.001; P-value = 0.002). Other transcripts, *IL6ST*, *INSR*, *OXTR* and *SLC38A2*, which were all significantly up-regulated on one or other day in the RNA-seq analysis, showed the same direction of

change in expression after qRT-PCR; however the changes were not statistically significant (P-value > 0.05).

In conceptus samples, *H19*, *SLC2A3* and *SNRPN* transcripts showed no significant differences between conditions in the RNA-seq analysis, and this was confirmed by qRT-PCR. The RNA-seq analysis identified down-regulation of *DNMT3B* and up-regulation of *SLC1A4* on day 14 of synchronous pregnancy and up-regulation of *NDN*, *PEG10* and *SLC7A5* on day 19 after synchronous ET, all of which was confirmed by qRT-PCR. Similarly, *SLC1A5* was down-regulated on day 14 (P-adjusted and P-value < 0.005) and up-regulated on day 19 (P-adjusted < 0.001; P-value = 0.029) in synchronous compared to asynchronous conceptuses, whereas *SLC2A5* was up-regulated on day 14 (P-adjusted = 0.012; P-value = 0.002) and down-regulated on day 19 (P-adjusted and P-value < 0.005) in synchronous membranes. The qRT-PCR results indicated upregulation of *IGF1* from day 14 of synchronous development (P-value = 0.007) whereas in the RNA-seq data, *IGF1* was only up-regulated on day 19 (P-adjusted = 0.027; P-value = 0.082).

Cell proliferation and cell attachment in response to IGFBP3 stimulation

Having identified *IGFBP3* as consistently upregulated in synchronous endometrium, we decided to investigate potential function by examining the effect of IGFBP3 stimulation on the attachment and proliferation of trophoctoderm cells, and compared its potency to a matrix component commonly used to promote cell attachment in culture, fibronectin. There was both a treatment and concentration effect on the mean number of cells attached per mm² (Figure 7A). Fibronectin treatment promoted trophoctoderm cell attachment in a concentration dependent fashion. More cells attached in the presence of 1000 ng/ml fibronectin than for 62, 125, 250 and 500 ng/ml (P < 0.0001). Cell attachment also increased between fibronectin concentrations of 125 and 500 ng/ml (P < 0.05). In the case of IGFBP3, a modest increase in cell attachment was observed between 62 ng/ml and 1000 ng/ml (P = 0.008). However, cell attachment was much higher in the presence of the highest fibronectin concentration (1000 ng/ml) than for BSA or IGFBP3 (P < 0.0001), but did not differ between IGFBP3 and BSA.

Cell proliferation was also measured after IGFBP3 stimulation, and in the presence of serum-containing versus serum-free medium (Figure 7B). Cell proliferation was higher in serum-containing medium (P < 0.05), whereas increasing the IGFBP3 concentration from 1 to 1000 ng/ml did not affect cell proliferation. After exposure to 10 or 100 ng/ml IGFBP3, cell proliferation was lower than in serum containing medium (P < 0.05).

Prostaglandin release after bradykinin stimulation

One of the other genes consistently upregulated in synchronous endometrium was kininogen 1. To examine the possible role of endometrial kininogen, the effects of one of its major sub-components, bradykinin, on prostaglandin secretion by cultured trophectoderm cells was examined. Release of PGE₂, PGF₂ α and PGF₁ α from trophectoderm cells was augmented by the presence of bradykinin after both 6 and 24 h of culture. However, while increasing concentrations of bradykinin resulted in a dose-dependent increase in PGE₂ release after 24h ($P < 0.0005$; Figure 8), and there also was a tendency for PGF₂ α release at 24h to increase with bradykinin dose ($P = 0.055$), there was no significant dose dependent increase of 6-keto PGF₁ α release. Overall, PGE₂ was secreted in the highest concentrations (515-1486 pg/ml), followed by 6-keto PGF₁ α (226-669 pg/ml), and PGF₂ α (56-202 pg/ml; data not shown).

Discussion

This study examined the effects of asynchronous embryo transfer on the transcriptome of the endometrium and conceptus membranes during early equine pregnancy, with the aim of discriminating the effects of progesterone from those of the presence of a conceptus on pathways involved in the establishment of pregnancy. Transcriptome comparison was performed between synchronous and asynchronous pregnancies on days 14 and 19 of conceptus development (6 and 11 days after transfer of a day 8 embryo), but also between day 14 synchronous and day 19 asynchronous pregnancies (day 14 endometrium in the presence of either a day 14 or a day 19 conceptus). Almost five times as many genes/transcripts were differentially expressed in conceptus membranes (3473; 25.5% of all detected transcripts) as in the endometrium (715; 4.6% of detected transcripts), with the number of differentially regulated genes increasing approximately 5 fold between days 14 and 19 in the conceptus membranes but only modestly in the endometrium. These differences presumably reflect the rapid and extensive changes occurring in the conceptus membranes at this stage of development, many of which will help to establish and enhance nutrient transfer to the embryo and dialogue with the endometrium; the large number of DEGs in the conceptus membranes also illustrates the dynamism and relative plasticity of the extra-embryonic membranes during the pre-implantation period and the profound effect of 5 days of negative uterine asynchrony on conceptus development [38].

The changes identified by RNA-seq were broadly replicated, and thereby validated, by qRT-PCR, although the statistical significance of the changes was more consistent for the genes selected in the conceptus membranes than those examined in the endometrium. In the endometrium, although the directions of change in expression were the same for RNA-seq and PCR data, the latter were less likely to reach statistical significance. In this respect, endometrial biopsies were collected from different mares and biological noise due to genetic variability between mares may have reduced consistency

[14]. Moreover, tissue recovered by endometrial biopsy is composed of many different cell types, and it is not possible (except by laser-capture microdissection) to ensure identical cell composition between biopsies. This could, in part, explain the small differences between the RNA-seq and the PCR results observed in endometrial samples. The conceptus membranes are likely to be more uniform because of the small number of cell types present and the relatively well defined temporal pattern of development.

We previously reported that negatively asynchronous ET delays conceptus development at the level of the whole conceptus and for selected genes known to exhibit parent-of-origin imprinting [38] or related to nutrient uptake [39,40]; the retardation in development presumably results from differences in histotroph composition due to the reduced duration of endometrial exposure to P4 prior to embryo introduction. The transcriptome comparisons performed between conceptus membranes at the different stages (D14-syn/asyn; D19-syn/asyn) indicated distinct profiles of DEGs, but gene ontology analysis revealed similar overrepresented categories to those reported previously between day 10, 12 and 14 compared to day 8 conceptuses by Klein and Troedsson [19]. Indeed, Klein and Troedsson reported that the cellular compartment 'nucleus' and the biological processes 'RNA processing', 'regulation of gene expression' and the molecular function 'RNA polymerase activity' were down-regulated in older conceptuses. We similarly found that the biological processes 'translation', and cellular components and molecular functions related to the nucleus were down-regulated in synchronous compared to asynchronous (i.e. retarded) day 14 conceptuses. While Klein and Troedsson reported genes involved in positive regulation of the immune system to be down-regulated in older conceptuses [19], we found that genes clustered under antiviral defense and various aspects of activation of the immune response were overrepresented among down-regulated genes on day 19, which supports the idea that, as it develops, the semi-allogenic conceptus becomes increasingly capable of hiding its immunogenicity or suppressing the uterine response to its foreign alleles. Functional categories that were overrepresented among the up-regulated genes in synchronous conceptuses on day 14 of development included positive regulation of exocytosis and peptide hormone secretion. Similarly, Klein and Troedsson [19] reported up-regulation of transcripts involved in the response of the conceptus to extracellular stimuli including hormones. On day 19 of development, synchronous conceptuses showed enrichment of transcripts for the biological processes 'cell adhesion', 'cell migration' and 'inflammatory responses', which undoubtedly reflect the developmental changes that occur in the membranes during the formation of the placenta and in the preparation for implantation. Most striking among the potential mechanisms of signaling and communication, were the extremely large numbers of transcripts relating to 'extracellular exosome' that were differentially regulated at both day 14 and, in particular, day 19. Recent studies have demonstrated release of extracellular vesicles by both conceptus and uterus during early pregnancy in

the ewe [46]; these vesicles were enriched for both specific proteins, mRNAs and miRNAs [47]. Since extracellular vesicles from both conceptus and uterus were taken up by trophectoderm and endometrial epithelial cells but were not found in deeper tissues, they were proposed to play a role in embryo-maternal communication. That the vesicular cargo in the uterus of pregnant ewes appears to be differentially regulated by progesterone [47] may explain why we saw differential (both up and down) regulation of such large numbers of genes related to extracellular exosome and exocytosis following asynchronous ET. Most importantly, it suggests that exosomes and other extracellular vesicles secreted by equine endometrium and conceptus membranes may play important roles in equine embryo-maternal communication during the periods of MRP and preparation for implantation. It would therefore be worthwhile examining both conceptus and endometrial extracellular vesicles to see how their protein, mRNA and miRNA cargos vary temporally or in response to progesterone or conceptus presence (endometrium), and investigating how these components may contribute to embryo-maternal communication and the establishment of pregnancy in the mare.

In endometrial tissues, we found more than two hundred DEGs between the synchronous and asynchronous conditions on day 14 and 19 of conceptus development, but only fourteen DEGs in the D14-syn/D19-asyn comparison. This indicates that the effect of duration of P4 exposure on the endometrial transcriptome is more profound than that of the duration of conceptus presence; this further implies that progesterone and/or the straightforward absence or presence of a conceptus plays the dominant role in regulating endometrial gene expression during the establishment of pregnancy, with the precise age and duration of presence of the conceptus playing a more subtle role in refining endometrial gene expression. Of course, in the groups D14-syn/asyn and D19-syn/asyn, we compared endometrium at different stages after ovulation, namely day 14 versus day 9 and day 19 versus day 14 in the presence of a day 14 or 19 conceptus, respectively. Not surprisingly, this resulted in large numbers of DEGs, namely 523 on day 14, of which 413 were specific to the D14-syn/asyn comparison, and 715 DEGs on day 19, of which 600 were specific to the D19-syn/asyn comparison. Gene ontology analysis revealed various over-represented functional terms among the up- and down-regulated genes, with some of them previously shown to be enriched in equine endometrium simply as an effect of increased time after ovulation or presence of a conceptus [14,18]. The functional terms found to be up-regulated during pregnancy that were shared by our study and previous studies, include 'calcium and peptide binding', 'cell-cell signalling', 'regulation of cell growth', 'negative regulation of apoptotic process', 'membrane' and 'extracellular exosome' [14,18]. That the endometrium responds to the presence of a conceptus from fairly soon after the latter's arrival in the uterus is indicated by changes in oxytocin sensitivity from around day 10 after ovulation [8,10,11]. In the present study, gene ontology further suggests a remodelling of the endometrium from at least day 14 of gestation, as indicated by upregulation in genes for cell growth and migration, which is presumably accompanied by changes in

the overlying glycocalyx as reflected by enhanced expression of genes for proteinaceous extracellular matrix; the extracellular matrix changes could be involved in modification of the endometrial surface to prevent conceptus adhesion before fixation, but then to facilitate conceptus-endometrium adhesion and the preparation for implantation following vesicle fixation on day 16. Alternatively, some of the changes related to the extracellular matrix may be involved in the changes in the size and composition of the blastocyst capsule during this period [4,48], which is known to involve an endometrial contribution and to incorporate uterine derived proteins [4,48,49]. Interestingly, as discussed for the conceptus membranes, it appears that exosomes and peptide binding are likely to play important, but to date incompletely understood, roles in conceptus-endometrium interaction [46]. Angiogenesis and vascularization of the endometrium also appears to be an important event during the preparation for implantation, as evidenced by the enrichment of the cellular components 'blood microparticles', 'inflammatory response' and 'cellular response to vascular endothelial growth' on day 19 of synchronous pregnancy, and supported by the detection of VEGF and its major receptors in the endometrium during both the estrous cycle and throughout gestation [50].

In the D14-syn/D19-asyn comparison, the two states are linked by including a recipient mare / endometrium on day 14 after ovulation, and distinguished by the presence of a conceptus for a longer or shorter duration (6 or 11 days after ET, corresponding to day 14 and day 19 of conceptus development). Only 6 genes were uniquely differentially expressed between D14-syn and D19-asyn endometrium, three of which were up-regulated by the presence of an older conceptus for a longer duration (i.e. in D19 asynchronous condition: *MGLL*, *LIPG* and *IL36G*). The gene *MGLL* codes for monoglyceride lipase and was previously found to be up-regulated during early equine pregnancy [14]. *MGLL* is a serine hydrolase that catalyzes the conversion of monoacylglycerides to free fatty acids and glycerol; the upregulation of *MGLL* in the presence of a more advanced embryo could be explained by increasing embryonic demands for free fatty acids and glycerol, i.e. to improve the availability of lipid building blocks. While fatty acids and glycerol are known to cross the human placental barrier and be used by the fetus [51], during early equine pregnancy they presumably need to be carried or transported into the conceptus. In this respect, the progesterone-dependent endometrial protein uterocalin (P19) is specifically present during early pregnancy, is able to bind a variety of fatty acids and has been proposed to act as a carrier for the fatty acids required to support embryonic development [52]. *LIPG*, also known as endothelial lipase, also has substantial phospholipase activity and could play an additional role in endometrial lipid metabolism to help provide fatty acids and lipid building blocks to the conceptus. The interleukin 36 gamma gene (*IL36G*) is part of the interleukin 1 (IL1) cytokine family. During decidualization of human endometrial stromal cells, cell receptivity to the IL1 family is modulated [53], suggesting a role in endometrial receptivity. Endometrial expression of these 3 genes is stimulated by the presence of a more advanced conceptus, presumably as a result of

specific factors expressed by the conceptus that help modulate the uterine environment to better support the development of a more advanced conceptus.

Interestingly, we identified 3 genes, *KNG1*, *IGFBP3* and *FAM118B*, that were differentially expressed in all endometrial comparisons, D14-syn/asyn, D19-syn/asyn and D14-syn/D19-asyn. In particular, *IGFBP3* and *KNG1* were up-regulated in the endometrium of synchronous pregnancies on days 14 and 19, but also in day 14 endometrium in the presence of a day 14 compared to a day 19 conceptus. *FAM118B* had the opposite profile of expression change to *KNG1* and *IGFBP3*. Therefore, rather than being upregulated simply by the presence of an older conceptus or duration of exposure to progesterone, *IGFBP3* and *KNG1* expression seemed to reflect appropriate synchrony between uterus and conceptus. Moreover, the fact that these genes were differentially expressed in all 3 comparisons suggests a role for matching endometrial stage to embryo development during the establishment of pregnancy, with effects on the conceptus either directly or by altering other aspects of endometrial function.

KNG1 (kininogen 1) is part of the kinin-kallikrein system. Alternative splicing of *KNG1* generates two proteins, a high molecular weight kininogen (HMWK) and a low molecular weight kininogen (LMWK). Kallikrein (*KLK*) encodes a serine protease, kallikrein. The precursor pre-kallikrein is activated by Factor XII and subsequently cleaves HMWK to release bradykinin (BK). Bradykinin is a pro-inflammatory peptide that acts via specific receptors, bradykinin receptors B1 and B2 (*BKRB1* and *BKRB2*), and is involved in blood pressure regulation and in inflammatory responses that increase vascular permeability, to cause vasodilatation, and regulate prostaglandin production [54–56]. Various members of the kinin-kallikrein system have previously been detected in equine, human, murine and porcine endometrium or conceptuses. For example, bradykinin protein was found in porcine ULF, with expression increasing during pregnancy [57], while LMWK, *BKRB2*, Factor XII and plasma kallikrein (*KLKB1*) are all expressed in porcine endometrium [54,57]. Factor XII has been detected in human decidual tissues [58] and in day 12 equine conceptuses [19]. *KNG1* has been detected in the endometrium, and reported to be up-regulated during early equine pregnancy [14,18], and various tissue kallikreins (*KLK1*, *KLK3*, *KLK4* and *KLK14*) are expressed by equine endometrium and the conceptus [18–20]. Furthermore, the kininogen protein has been detected in equine uterine luminal fluids on day 13 after ovulation, although it was not present in yolk sac fluid [22], and ULF kininogen concentration increases as pregnancy progresses in the pig [57]. These results suggest that the kinin-kallikrein system is active during early pregnancy and could be involved in the establishment of pregnancy by stimulating an inflammatory response, angiogenesis and prostaglandin production in the endometrium and/or the conceptus [54,57–60]. The horse embryo is known to secrete large amounts of prostaglandins, including PGE_2 , $\text{PGF}_{2\alpha}$ and PGI_2 , which are thought to play a role in stimulating a local increase in vascularity and in conceptus mobility [61]. To examine whether *KNG1* may be involved in

conceptus prostaglandin production, we stimulated primary monolayers of trophoctoderm cells with different concentrations of bradykinin for 6 and 24 hours. Production of PGE₂, PGF_{2α} and 6-keto PGF_{1α} (the stable metabolite of PGI₂) increased between 6 and 24 hours of culture with bradykinin and, by 24 h, concentrations of all three were significantly higher than after control (6h no bradykinin) cultures. PGE₂ and PGF_{2α} showed evidence of a dose response to the concentration of bradykinin, but release of all prostaglandins was enhanced by the lowest concentration of bradykinin tested. Bradykinin is known to induce production of specific ranges of prostaglandins, dependent on the tissue stimulated, e.g. PGE₂ in gastric mucosa [62], and PGE₂, PGF_{2α} and 6-keto PGF_{1α} in ovarian follicles [63,64]. Since the bradykinin receptors, B1 and B2, were not expressed in the conceptus membranes, bradykinin must work via an alternative pathway to stimulate prostaglandin production in trophoctoderm. In pulmonary smooth muscle cells, which secrete many cytokines and growth factors, bradykinin has been shown to induce prostaglandin production by up-regulating prostaglandin-endoperoxidase synthase 2 (PTGS2 also known as COX2) [65,66]. The latter studies also provided evidence that bradykinin induced PTGS2 via the CRE-binding site of the PTGS2 promotor. It seems reasonable to speculate that, in equine trophoctoderm cells, bradykinin stimulates PTGS2 expression and thereby increases the synthesis of at least PGE₂ and PGF_{2α}. PTGS2 metabolizes arachidonic acid into prostaglandin H₂ (PGH₂) which is a common substrate for the production of other prostaglandins. Prostaglandin production by the equine conceptus is thought to be required for conceptus mobility in the uterine cavity by inducing myometrial contractions [61], most likely due to PGE₂ and PGF_{2α} which are both secreted by the conceptus [9]. The sheep conceptus is also known to secrete PGE₂, PGF_{2α} and PGI₂ which act in a paracrine fashion on the endometrium to regulate the expression of genes associated with endometrial remodeling, cellular function (cell migration, proliferation and attachment), angiogenesis, and nutrient transport [67]. Thus, endometrial expression of KNG1 and the release of bradykinin could have important effects on prostaglandin production, and may have further downstream effects on functions important to conceptus development and the maintenance of pregnancy, such as angiogenesis and nutrient transport.

IGFBP3 (insulin like growth factor binding protein 3) is part of the IGF-system and has a high affinity for IGF1 and IGF2. Binding of IGF1 or 2 to IGFBP3 can increase their half-life in the circulation, but can also reduce their availability to bind to receptors. Furthermore, IGFBPs have been reported to have direct effects such as the stimulation of cell proliferation and cell attachment, although the mechanisms of these effects are not well understood [68]. IGFBP3 is expressed in the uterine lumen during early pregnancy in ruminants [68,69], and is progesterone-regulated in sheep [26]. In the horse, IGFBP3 protein has been detected in association with the blastocyst capsule, in the ULF and in medium conditioned by conceptus membranes [70]. Moreover, *IGFBP3* is expressed in conceptus membranes and is up-regulated in the endometrium of pregnant compared to non-pregnant mares [14,18,70].

However, very little is known about the function of IGFBP3 during early pregnancy, other than the assumption that it is likely to regulate IGF bioavailability, where IGF1 is known to be produced by both conceptus and endometrium during early pregnancy in the mare [71]. On the other hand, it has also been postulated that IGFBP3 influences cell proliferation and cell survival directly [72,73]. Similar to what has been described for IGFBP1 in ovine trophoctodermal cells [68], we tested the effect of IGFBP3 on proliferation and attachment to plastic of equine trophoctoderm cells. Contrary to expectations, none of the assays performed showed a clear effect of IGFBP3 on trophoctoderm cell behavior. Pre-coating tissue culture wells with IGFBP3 did not enhance cell attachment to anywhere near the extent that fibronectin coating did. Addition of IGFBP3 to the culture medium did not enhance cell proliferation, although neither was it detrimental in that cell proliferation indices were no different to those in the control condition. Perhaps endometrial IGFBP3 serves primarily to regulate bioavailability of IGFs to the equine conceptus; alternatively, IGFBP3 may have predominantly autocrine or paracrine effects on endometrial cells to help prepare the uterus for implantation.

FAM118B has recently been identified as a component of Cajal bodies (coiled bodies) in the nucleus that are involved in the biogenesis of small ribonucleoproteins. *FAM118B* plays an active role in Cajal body formation in that it is required for their assembly, splicing and cell proliferation [74]. Very little is known about the ubiquity or function of Cajal bodies during early pregnancy.

This study has generated lists of genes, in both endometrium and conceptus membranes, expression of which is influenced by the duration of exposure of the endometrium to progesterone, age of the conceptus and/or duration of conceptus presence. Clearly, length of progesterone exposure and the presence of the conceptus combine to regulate the endometrial transcriptome. Circulating progesterone and factors secreted by the conceptus affect groups of genes related to specific biological processes in the endometrium, which in turn affect the conceptus membranes, thereby creating an interrelationship that should synchronize development of the two and optimize preparation for implantation and the formation of a placenta. Significant asynchrony between the conceptus and the uterine environment, in the form of a uterus lagging behind developmental stage of the conceptus, leads rapidly to a marked delay in conceptus development. This demonstrates a very precise interaction or dialogue between the conceptus and the endometrium, and indicates that the equine conceptus is able to sense the endometrial stage and delay its development accordingly. The exact mechanisms by which the conceptus senses the uterine stage are not known, but it is most likely due to the absence, or inappropriate concentrations, of specific factors expressed or secreted by the endometrium. Moreover, the role of extracellular vesicles as a mode of communication between conceptus and endometrium is worthy of further investigation. Finally, identifying the stimulatory effect of bradykinin on prostaglandin release by equine trophoctoderm cells is an interesting step in understanding the regulation of conceptus PG production during early equine pregnancy. Expression

of KNG1 by the endometrium could be primarily involved in stimulating PG production by the conceptus, but may also have other functions. Further studies will be needed to understand better the roles of bradykinin and IGFBP3 in matching conceptus and endometrial stage, but the very fact that optimal embryo-uterine asynchrony consistently upregulates their expression indicates that they are likely to play an important role in the intricate interaction between the endometrium and the conceptus during the establishment of pregnancy and preparation for implantation.

References

- [1] Stout, T.A.E. Embryo-maternal communication during the first 4 weeks of equine pregnancy, *Theriogenology* **2016**, *86*,349–354.
- [2] Freeman, D.A.; Weber, J.A.; Geary, R.T.; Woods, G.L. Time of embryo transport through the mare oviduct, *Theriogenology* **1991**, *36*, 823–830.
- [3] Allen, W.R.; Stewart, F. Equine placentation. *Reprod. Fertil. Dev.* **2001**, *13*, 623-634.
- [4] Oriol, J.G.; Sharom, F.J.; Betteridge, K.J. Developmentally regulated changes in the glycoproteins of the equine embryonic capsule. *J. Reprod. Fertil.* **1993**, *99*, 653–664.
- [5] Herrler, A.; Stewart, F.; Crossett, B.; Pell, J.M.; Ellis, P.D.; Beier, H.M.; Allen, W.R. Identification of proteins in the equine embryonic capsule. *J. Reprod. Fertil.* **2000**, *Suppl 56*, 601-606.
- [6] Leith, G.S.; Ginther, O.J. Characterization of intrauterine mobility of the early equine conceptus. *Theriogenology* **1984**, *21*, 633-644.
- [7] McDowell, K.J.; Sharp, D.C.; Grubaugh, W.; Thatcher, W.W.; Wilcox, C.J. Restricted conceptus mobility results in failure of pregnancy maintenance in mares., *Biol. Reprod.* **1988**, *39*, 340–348.
- [8] Starbuck, G.R.; Stout, T.A.E.; Lamming, G.E.; Allen, W.R.; Flint, A.P.F. Endometrial oxytocin receptor and uterine prostaglandin secretion in mares during the oestrous cycle and early pregnancy. *Reproduction* **1998**, *113*, 173–179.
- [9] Stout, T.A.E.; Allen, W.R. Prostaglandin E(2) and F(2 alpha) production by equine conceptuses and concentrations in conceptus fluids and uterine flushings recovered from early pregnant and dioestrous mares. *Reproduction* **2002**, *123*, 261–268.
- [10] Goff, A.K.; Pontbriand, D.; Sirois, J. Oxytocin stimulation of plasma 15-keto-13,14-dihydro prostaglandin F-2 alpha during the oestrous cycle and early pregnancy in the mare. *J. Reprod. Fertil.* **1987**. *Suppl. 35*, 253–260.
- [11] Stout, T.A.; Lamming, G.E.; Allen, W.R. Oxytocin administration prolongs luteal function in cyclic mares. *J. Reprod. Fertil.*, **1999**, *116*, 281-287.
- [12] Klein, C.; Troedsson, M.H.T. Maternal recognition of pregnancy in the horse: A mystery still to be solved, *Reprod. Fertil. Dev.* **2011**, *23*, 952–963.
- [13] de Ruijter-Villani, M.; Van Tol, H.T.A.; Stout, T.A.E. Effect of pregnancy on endometrial expression of luteolytic pathway components in the mare, *Reprod. Fertil. Dev.* **2015**, *27*, 834–845.
- [14] Merkl, M.; Ulbrich, S.E.; Otzdorff, C.; Herbach, N.; Wanke, R.; Wolf, E.; Handler, J.; Bauersachs, S. Microarray analysis of equine endometrium at days 8 and 12 of pregnancy., *Biol. Reprod.* **2010**, *83*, 874–86.
- [15] Bauersachs, S.; Wolf, E. Transcriptome analyses of bovine, porcine and equine endometrium during the pre-implantation phase. *Anim. Reprod. Sci.* **2012**, *134*, 84-94.
- [16] Klohonatz, K.M.; Cloeman, S.J.; Islas-Trejo, A.D.; Medrano, J.F.; Hess, A.M.;

- Kalbfleisch, .; Thomas, M.G.; Bouma, G.J.; Breummer, J.E. Coding RNA sequencing of equine endometrium during maternal recognition of pregnancy. *Genes* **2019**, *10*, 749.
- [17] Klohonatz, K.M.; Hess, A.M.; Hansen, T.R.; Squires, E.L.; Bouma, G.J.; Bruemmer, J.E. Equine endometrial gene expression changes during and after maternal recognition of pregnancy. *J. Anim. Sci.* **2015**, *93*, 3364–3376.
- [18] Klein, C.; Scoggin, K.E.; Ealy, A.D.; Troedsson, M.H.T.T. Transcriptional profiling of equine endometrium during the time of maternal recognition of pregnancy. *Biol. Reprod.*, **2010**, *83*, 102–113.
- [19] Klein, C.; Troedsson, M.H.T. Transcriptional profiling of equine conceptuses reveals new aspects of embryo-maternal communication in the horse. *Biol. Reprod.*, **2011**, *84*, 872–885.
- [20] Klein, C. Novel equine conceptus-endometrial interactions on Day 16 of pregnancy based on RNA sequencing. *Reprod. Fertil. Dev.*, **2015**, *28*, 1712–1720.
- [21] Swegen, A.; Grupen, C.G.; Gibb, Z.; Baker, M.A.; de Ruijter-Villani, M.; Smith, N.D.; Stout, T.A.E.; Aitken, R.J. From peptide masses to pregnancy maintenance: A comprehensive proteomic analysis of the early equine embryo secretome, blastocoel fluid, and capsule. *Proteomics*, **2017**, *17*, 1600433.
- [22] Smits, K.; Willems, S.; Van Steendam, K.; Van De Velde, M.; De Lange, V.; Ververs, C.; Roels, K.; Govaere, J.; Van Nieuwerburgh, F.; Peelman, L.; Deforce, D.; Van Soom, A. Proteins involved in embryo-maternal interaction around the signalling of maternal recognition of pregnancy in the horse. *Sci. Rep.* **2018**, *8*, 1–14.
- [23] Bazer, F.W.; Spencer, T.E.; Johnson, G.A.; Burghardt, R.C.; Wu, G. Comparative aspects of implantation. *Reproduction* **2009**, *138*, 195–209.
- [24] Filant, J.; Spencer, T.E. Uterine glands: biological roles in conceptus implantation, uterine receptivity and decidualization. *Int. J. Dev. Biol.* **2014**, *58*, 107–116.
- [25] Lonergan, P.; Forde, N. The role of progesterone in maternal recognition of pregnancy in domestic ruminants. In *Regulation of Implantation and Establishment of Pregnancy in Mammals. Tribute to 45 Year Anniversary of Roger V. Short's "Maternal Recognition of Pregnancy"*; Geisert, D.R., Bazer, F.W., Eds.; Springer International Publishing, Switzerland, 2015; pp. 87–104.
- [26] Satterfield, M.C.; Hayashi, K.; Song, G.; Black, S.G.; Bazer, F.W.; Spencer, T.E. Progesterone regulates FGF10, MET, IGFBP1, and IGFBP3 in the endometrium of the ovine uterus. *Biol. Reprod.* **2008**, *79*, 1226–1236.
- [27] Forde, N.; Carter, F.; Fair, T.; Crowe, M.A.; Evans, A.C.O.; Spencer, T.E.; Bazer, F.W.; McBride, R.; Boland, M.P.; O’Gaora, P.; Lonergan, P.; Roche, J.F. Progesterone-regulated changes in endometrial gene expression contribute to advanced conceptus development in cattle. *Biol. Reprod.* **2009**, *81*, 784–794.
- [28] Spencer, T.E.; Forde, N.; Lonergan, P. The role of progesterone and conceptus-derived factors in uterine biology during early pregnancy in ruminants., *J. Dairy Sci.* **2016**, *99*, 5941–5950.
- [29] Allen, W.R.; Mathias, S.; Lennard, S.N.; Greenwood, R.E. Serial measurement of peripheral oestrogen and progesterone concentrations in oestrous mares to determine optimum mating time and diagnose ovulation. *Equine Vet. J.* **1995**, *27*, 460–464.
- [30] Mann, G.E.; Lamming, G.E. Relationship between maternal endocrine environment, early embryo development and inhibition of the luteolytic mechanism in cows. *Reproduction* **2001**, *121*, 175–180.

- [31] Randi, F.; Fernandez-Fuertes, B.; McDonald, M.; Forde, N.; Kelly, A.K.; Bastos Amorin, H.; Muniz de Lima, E.; Morotti, F.; Marcondes Seneda, M.; Lonergan, P. Asynchronous embryo transfer as a tool to understand embryo–uterine interaction in cattle: is a large conceptus a good thing? *Reprod. Fertil. Dev.* **2016**, *28*, 1999–2006.
- [32] Geisert, R.D.; Fox, T.C.; Morgan, G.L.; Wells, M.E.; Wettemann, R.P.; Zavy, M.T. Survival of bovine embryos transferred to progesterone-treated asynchronous recipients. *Reproduction* **1991**, *92*, 475–482.
- [33] Ledgard, A.M.; Berg, M.C.; McMillan, W.H.; Smolenski, G.; Peterson, A.J. Effect of asynchronous transfer on bovine embryonic development and relationship with early cycle uterine proteome profiles. *Reprod. Fertil. Dev.* **2012**, *24*, 962–972.
- [34] Wilsher, S.; Clutton-Brock, A.; Allen, W.R. Successful transfer of day 10 horse embryos: influence of donor-recipient asynchrony on embryo development. *Reproduction* **2010**, *139*, 575–585.
- [35] Jacob, J.C.F.; Haag, K.T.; Santos, G.O.; Oliveira, J.P.; Gastal, M.O.; Gastal, E.L. Effect of embryo age and recipient asynchrony on pregnancy rates in a commercial equine embryo transfer program. *Theriogenology* **2012**, *77*, 1159–1166.
- [36] Cuervo-Arango, J.; Claes, A.N.; Stout, T.A.E. In vitro produced horse embryos exhibit a very narrow window of acceptable recipient mare uterine synchrony compared with in vivo derived embryos. *Reprod. Fertil. Dev.* **2019**, *31*, 1904–1911.
- [37] Wilsher, S.; W.R. Allen, Uterine influences on embryogenesis and early placentation in the horse revealed by transfer of day 10 embryos to day 3 recipient mares, *Reproduction*. 137 (2009) 583–593. doi:10.1530/REP-08-0328.
- [38] Gibson, C.; de Ruijter-Villani, M.; Stout, T.A.E. Negative uterine asynchrony retards early equine conceptus development and upregulation of placental imprinted genes. *Placenta* **2017**, *57*, 175–182.
- [39] Gibson, C.; de Ruijter-Villani, M.; Rietveld, J.; Stout, T.A.E. Amino acid transporter expression in the endometrium and conceptus membranes during early equine pregnancy. *Reprod. Fertil. Dev.* **2018**, *30*, 1675–1688.
- [40] Gibson, C.; de Ruijter-Villani, M.; Rietveld, J.; Stout, T.A.E. Expression of glucose transporters in the endometrium and early conceptus membranes of the horse. *Placenta* **2018**, *68*, 22–32.
- [41] de Ruijter-Villani, M.; van Boxel, P.R.M.; Stout, T.A.E. Fibroblast growth factor-2 expression in the preimplantation equine conceptus and endometrium of pregnant and cyclic mares. *Theriogenology* **2013**, *80*, 979–989.
- [42] Stout, T.A.E. Equine embryo transfer : review of developing potential, *Equine Vet. J.* **2006**, *38*, 467–478.
- [43] Huang, D.W.; Sherman, B.T.; Lempicki, R.A. Systematic and integrative analysis of large gene lists using DAVID bioinformatics resources. *Nat. Protoc.* **2009**, *4*, 44–57.
- [44] De Grauw, J.C.; Van De Lest, C.H.A.; van Weeren, P.R. A targeted lipidomics approach to the study of eicosanoid release in synovial joints. *Arthritis Res. Ther.* **2011**, *13*, R123.
- [45] Cokelaere, S.M.; Plomp, S.G.M.; de Boef, E.; de Leeuw, M.; Bool, S.; van de Lest, C.H.A.; van Weeren, P.R.; Korthagen, N.M.; Sustained intra-articular release of celecoxib in an equine repeated LPS synovitis model. *Eur. J. Pharm. Biopharm.* **2018**, *128*, 327–336.
- [46] Burns, G.W.; Brooks, K.E.; Spencer, T.E. Extracellular vesicles originate from the conceptus and uterus during early pregnancy in the sheep. *Biol. Reprod.* **2016**, *94*, 56.

- [47] Burns, G.W.; Brooks, K.E.; O'Neil, E.V.; Hagen, D.E.; Behura, S.K.; Spencer, T.E. Progesterone effects on extracellular vesicles in the sheep uterus. *Biol. Reprod.* **2018**, *98*, 612-622.
- [48] Quinn, B.A.; Hayes, M.A.; Waelchi, R.O.; Kennedy, M.W.; Betteridge, K.J. Changes in major proteins in the embryonic capsule during immobilization (fixation) of the conceptus in the third week of pregnancy in the mare. *Reproduction* **2007**, *134*, 161-170.
- [49] Crossett, B.; Allen, W.R.; Stewart, F. A 19 kDa protein secreted by the endometrium of the mare is a novel member of the lipocalin family. *Biochem. J.* **1996**, *320*, 137-143.
- [50] Allen, W.R.; Gower, S.; Wilsher, S. Immunohistochemical localization of vascular endothelial growth factor (VEGF) and its two receptors (Flt-1 and KDR) in the endometrium and placenta of the mare during the oestrous cycle and pregnancy. *Reprod. Domest. Anim.* **2007**, *42*, 516-526.
- [51] Herrera, E. Lipid metabolism in pregnancy and its consequences in the fetus and newborn. *Endocrine* **2002**, *19*, 43-55.
- [52] Suire, S.; Stewart, F.; Beauchamp, J.; Kennedy, M.W. Uterocalin, a lipocalin provisioning the preattachment equine conceptus: fatty acid and retinol binding properties, and structural characterization. *Biochem. J.* **2001**, *356*, 369-376.
- [53] Bourdieu, A.; Ahmad, S.F.; Lachhab, A.; Akoum, A.; Regulation of inflammatory and angiogenesis mediators in a functional model of decidualized endometrial stromal cells. *Reprod. Biomed. Online* **2016**, *32*, 85-95.
- [54] Vonnahme, K.A.; Fernando, S.C.; Ross, J.W.; Ashworth, M.D.; DeSilva, U.; Malayer, J.R.; Geisert, R.D. Porcine endometrial expression of kininogen, factor XII, and plasma kallikrein in cyclic and pregnant gilts. *Biol. Reprod.* **2004**, *70*, 132-138.
- [55] Golias, C.; Charalabopoulos, A.; Stagikas, D.; Charalabopoulos, K.; Batistatou, A. The kinin system--bradykinin: biological effects and clinical implications. Multiple role of the kinin system--bradykinin., *Hippokratia* **2007**, *11*, 124-128.
- [56] Hillmeister, P.; Persson, P.B. The Kallikrein-Kinin system, *Acta Physiol.* **2012**, *206*, 215-219.
- [57] Allen, M.R.; Zhang, B.R.; Hettinger, A.M.; Goad, D.W.; Malayer, J.R.; Geisert, R.D. Detection of bradykinin and bradykinin-beta(2) receptors in the porcine endometrium during the estrous cycle and early pregnancy. *Biol. Reprod.* **2002**, 574-579.
- [58] Kawato, H.; Tabata, T.; Minoura, H.; Murabayashi, N.; Ma, N.; Fang Wang, D.; Sagawa, N. Factor XII gene expression in endometrial stromal cells during decidualisation. *Reprod. Fertil. Dev.* **2009**, *21*, 840-847.
- [59] Ullah, K.; Rahman, T.U.; Pan, H.T.; Guo, M.X.; Dong, X.Y.; Liu, J.; Jin, L.Y.; Cheng, Y.; Ke, Z.H.; Ren, J.; Lin, X.H.; Qiu, X.X.; Wang, T.T.; Huang, H.F.; Sheng, J.Z. Serum estradiol levels in controlled ovarian stimulation directly affect the endometrium. *J. Mol. Endocrinol.* **2017**, *59*, 105-119.
- [60] Erices, R.; Corthorn, J.; Lisboa, F.; Valdés, G. Bradykinin promotes migration and invasion of human immortalized trophoblasts. *Reprod. Biol. Endocrinol.* **2011**, *9*, 97.
- [61] Stout, T.A.; Allen, W.R. Role of prostaglandins in intrauterine migration of the equine conceptus. *Reproduction* **2001**, *121*, 771-775.
- [62] Morrissey, N.K.; Bellenger, C.R.; Baird, A.W. Bradykinin stimulates prostaglandin E2 production and cyclooxygenase activity in equine nonglandular and glandular gastric mucosa in vitro. *Equine Vet. J.* **2008**, *40*, 332-336.
- [63] Yoshimura, Y.; Espey, L.; Hosoi, Y.; Adachi, T.S.; Atlas, J.; Ghodgaonkar, R.B.; Dubin,

- N.H.; Wallach, E.E. The Effects of Bradykinin on Ovulation and Prostaglandin Production by the Perfused Rabbit Ovary. *Endocrinology* **1988**, *122*, 2540–2546.
- [64] Hellberg, P.; Larson, L.; Olofsson, J.; Hedin, L.; Brannstrom, M. Stimulatory effects of bradykinin on the ovulatory process in the in vitro-perfused rat ovary. *Biol Reprod.* **1991**, *44*, 269–274.
- [65] Nie, M.; Pang, L.; Inoue, H.; Knox, A.J. Transcriptional regulation of cyclooxygenase 2 by bradykinin and interleukin-1 beta in human airway smooth muscle cells: involvement of different promoter elements, transcription factors, and histone h4 acetylation. *Mol. Cell. Biol.* **2003**, *23*, 9233–9244.
- [66] Bradbury, D.A.; Newton, R.; Zhu, Y.M.; El-Haroun, H.; Corbett, L.; Knox, A.J. Cyclooxygenase-2 induction by bradykinin in human pulmonary artery smooth muscle cells is mediated by the cyclic AMP response element through a novel autocrine loop involving endogenous prostaglandin E2, E-prostanoid 2 (EP2), and EP4 Receptors. *J. Biol. Chem.* **2003**, *278*, 49954–49964.
- [67] Dorniak, P.; Bazer, F.W.; Wu, G.; Spencer, T.E. Conceptus-derived prostaglandins regulate endometrial function in sheep. *Biol. Reprod.* **2012**, *87*, 1–7.
- [68] Simmons, R.M.; Erikson, D.W.; Kim, J.; Burghardt, R.C.; Bazer, F.W.; Johnson, G.A.; Spencer, T.E. Insulin-like growth factor binding protein-1 in the ruminant uterus: potential endometrial marker and regulator of conceptus elongation. *Endocrinology* **2009**, *150*, 4295–4305.
- [69] Robinson, R. The expression of the IGF system in the bovine uterus throughout the oestrous cycle and early pregnancy. *J. Endocrinol.* **2000**, *165*, 231–243.
- [70] Herrler, A.; Pell, J.M.; Allen, W.R.; Beier, H.M.; Stewart, F. Horse conceptuses secrete insulin-like growth factor-binding protein 3. *Biol. Reprod.* **2000**, *62*, 1804–1811.
- [71] Walters, K.W.; Roser, J.F.; Anderson, G.B. Maternal-conceptus signaling during early pregnancy in mares: oestrogen and insulin-like growth factor 1. *Reproduction* **2001**, *121*, 331–338.
- [72] Forbes, K.; Souquet, B.; Garside, R.; Aplin, J.D.; Westwood, M. Transforming growth factor- β (TGF β) receptors I/II differentially regulate TGF β 1 and IGF-binding protein-3 mitogenic effects in the human placenta. *Endocrinology* **2010**, *151*, 1723–1731.
- [73] Baxter, R.C. Insulin-like growth factor binding protein-3 (IGFBP-3): Novel ligands mediate unexpected functions. *J. Cell Commun. Signal* **2013**, *7*, 179–189.
- [74] Li, Y.; Fong, K.W.; Tang, M.; Han, X.; Gong, Z.; Ma, W.; Hebert, M.; Songyang, Z.; Chen, J. Fam118B, a newly identified component of Cajal bodies, is required for Cajal body formation, snRNP biogenesis and cell viability. *J. Cell Sci.* **2014**, *127*, 2029–2039.

Acknowledgements

Charlotte Gibson's PhD studies were funded by a Marie Skłodowska-Curie PhD grant under the Epihealthnet project (PITN-GA-2012-317146-EpiHealthNet).

Table 1. Number of genes differentially expressed (DEGs) in the endometrium and conceptus membranes on day 14 and 19 of development following transfer of day 8 horse embryos to day 8 (synchronous) or day 3 (asynchronous) recipient mares. Genes with higher expression in the synchronous compared to the asynchronous pregnancies are referred to as up-regulated and those with a lower expression are referred to as down-regulated.

Endometrium	DEGs	Up-regulated	Down-regulated
D14 – Syn / Asyn	523	174	349
D19 – Syn / Asyn	715	283	432
D14 – Syn / D19 – Asyn	14	7	7
Conceptus			
D14 – Syn / Asyn	556	285	271
D19 – Syn / Asyn	3473	1870	1603
D14 – Syn / D19 – Asyn	3646	1961	1685

Table 2. Validation of the RNA-seq results by qRT-PCR for selected genes in the equine endometrium 6 (day 14) and 11 (day 19) days after transfer of day 8 embryos to the uterus of mares on day 8 (synchronous) or day 3 (asynchronous) after ovulation. Day 14 synchronous vs. asynchronous; Day 19 synchronous vs asynchronous. Positive values represent up-regulated genes, and negative values represent down-regulated genes in synchronous endometrium. Solute carrier: SLC; fold change: FC.

Gene name	Gene symbol	D14 RNA-seq		D14 PCR		D19 RNA-seq		D19 PCR	
		Log2 FC	P-adjusted	Log2 FC	P-value	Log2 FC	P-adjusted	Log2 FC	P-value
Interleukin 6 signal transducer	<i>IL6ST</i>	0.33	0.572	0.77	0.249	0.65	< 0.001	0.27	0.283
Insulin receptor	<i>INSR</i>	0.96	0.009	0.58	0.291	0.99	< 0.001	0.69	0.065
Leukemia inhibitory factor (LIF)	<i>LIF</i>	1.35	0.022	1.37	0.082	2.57	< 0.001	3.07	0.001
LIF receptor	<i>LIFR</i>	0.27	0.419	1.22	0.148	-0.20	0.639	-0.44	0.879
Oxytocin receptor	<i>OXTR</i>	1.51	0.007	0.74	0.226	0.63	0.071	0.04	0.711
Prostaglandin F receptor	<i>PTGFR</i>	-1.47	< 0.001	-1.83	0.016	-0.47	0.161	-1.46	0.153
SLC family 1, member 1	<i>SLC1A1</i>	0.08	0.962	-0.02	0.919	-1.49	< 0.001	-1.75	0.002
SLC family 2, member 1	<i>SLC2A1</i>	1.89	< 0.001	3.16	0.001	0.11	0.889	-1.32	0.379
SLC family 38, member 2	<i>SLC38A2</i>	0.36	0.283	0.09	0.636	1.10	< 0.001	0.75	0.061
SLC family 43, member 2	<i>SLC43A2</i>	-0.47	0.425	-1.22	0.050	-0.33	0.450	-0.98	0.173
SLC family 5, member 1	<i>SLC5A1</i>	-0.28	0.752	-0.36	0.492	-0.08	0.935	-0.90	0.369

Table 3. Validation of the RNA-seq results by qRT-PCR for selected genes in equine conceptus membranes 6 (day 14) and 11 (day 19) days after transfer of day 8 embryos to the uterus of mares on day 8 (synchronous) or day 3 (asynchronous) after ovulation. Day 14 synchronous vs. asynchronous; Day 19 synchronous vs asynchronous. Positive values represent up-regulated genes, and negative values represent down-regulated genes in synchronous pregnancies. Solute carrier: SLC; fold change: FC.

Gene name	Gene symbol	D14 RNA-seq		D14 PCR		D19 RNA-seq		D19 PCR	
		Log2 FC	P-adjusted	Log2 FC	P-value	Log2 FC	P-adjusted	Log2 FC	P-value
DNA-methyltransferase 3B	<i>DNMT3B</i>	-0.71	< 0.001	-0.64	0.048	0.12	0.613	0.66	0.018
H19, Imprinted maternally expressed transcript	<i>H19</i>	0.03	0.968	0.11	0.572	0.40	0.083	0.62	0.058
Insulin-like growth factor 1	<i>IGF1</i>	0.43	0.302	2.20	0.007	1.48	0.027	1.67	0.082
Necdin	<i>NDN</i>	-0.17	0.729	-0.53	0.405	1.42	0.001	1.57	0.019
Paternally expressed gene 10	<i>PEG10</i>	0.32	0.441	0.45	0.522	2.70	< 0.001	2.89	0.004
SLC family 1, member 4	<i>SLC1A4</i>	0.79	0.008	1.10	0.002	0.72	0.003	0.77	0.062
SLC family 1, member 5	<i>SLC1A5</i>	-1.65	< 0.001	-2.52	0.004	2.15	< 0.001	3.07	0.029
SLC family 2, member 3	<i>SLC2A3</i>	0.22	0.305	0.54	0.167	-0.16	0.200	-0.02	0.680
SLC family 2, member 5	<i>SLC2A5</i>	0.49	0.012	1.55	0.002	-1.20	< 0.001	-1.42	0.001
SLC family 7, member 5	<i>SLC7A5</i>	-0.04	0.941	0.69	0.464	1.64	< 0.001	2.52	0.007
Small nuclear ribonucleoprotein-associated protein	<i>SNRPN</i>	-0.04	0.914	-0.03	0.772	-0.05	0.866	-0.40	0.542

Figures

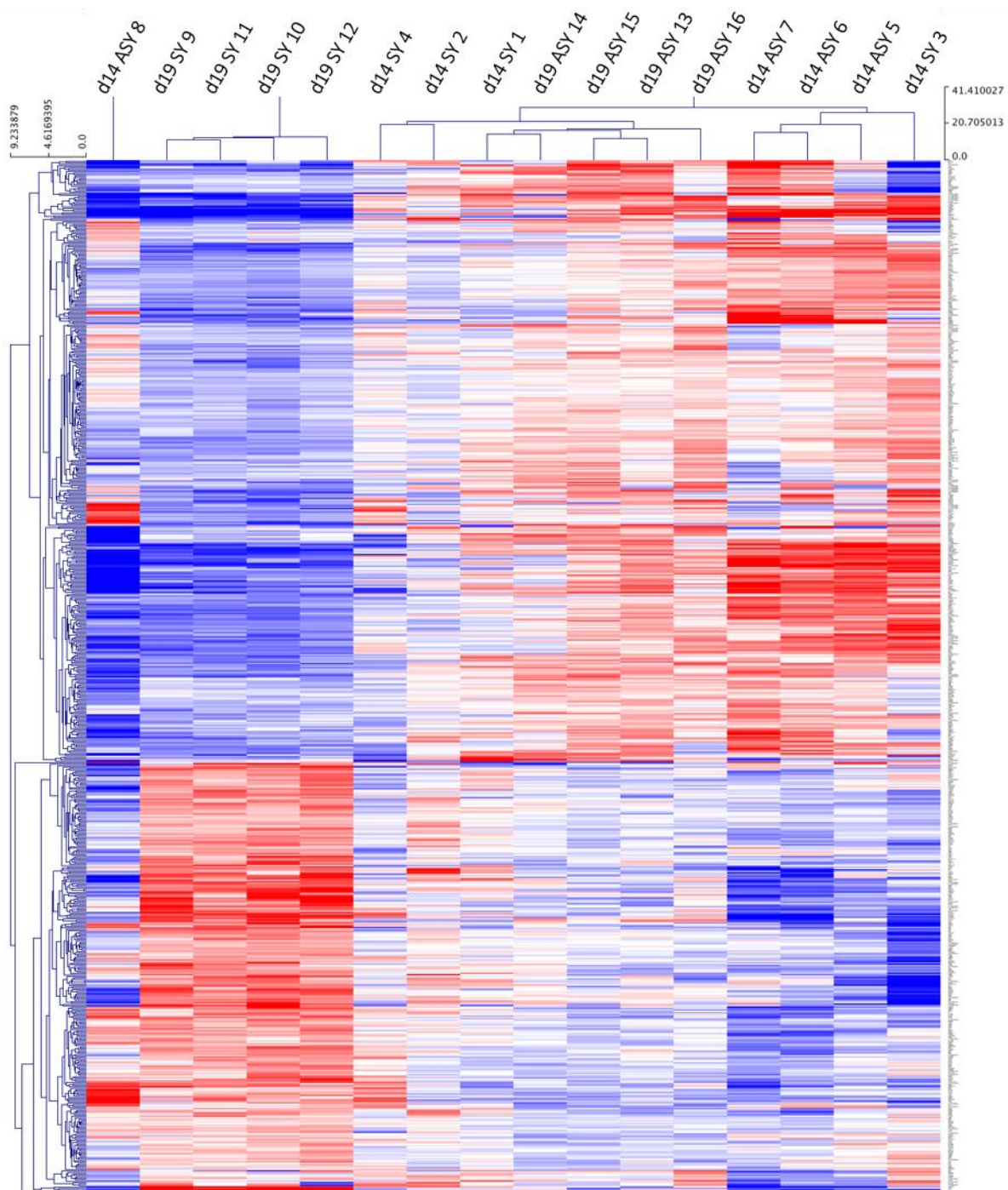


Figure 1: Hierarchical cluster analysis of differentially expressed genes (DEGs) with a log₂ fold change higher than 1.4 or lower than -1.4 for equine endometrial samples collected after transfer of day 8 horse embryos to synchronous (day 8: SY) or asynchronous (day 3: ASY) recipient mares. Endometrial samples were collected on day 14 (d14) or 19 (d19) of embryo development (blue = down-regulated genes; red = up-regulated gene). The sample number is indicated by a number from 1 to 16.

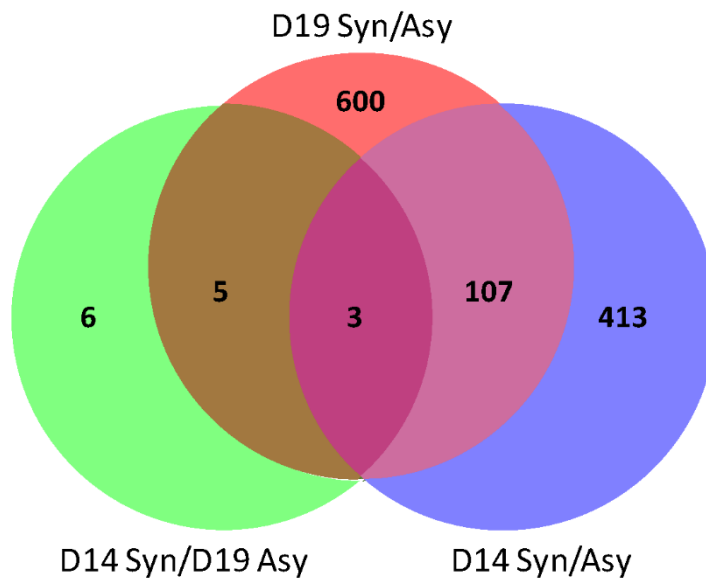


Figure 2: Venn diagram for the overlap of DEGs in the endometrium among three pair-wise comparisons, day 14 of conceptus development between synchronous (day 14 endometrium) and asynchronous (day 9 endometrium; D14 syn/asyn), on day 19 of conceptus development between synchronous (day 19 endometrium) and asynchronous (day 14 endometrium; D19-syn/asyn), and between day 14 synchronous and day 19 asynchronous pregnancies (D14-sync/D19-asyn). The numbers of DEGs in each compartment is depicted.

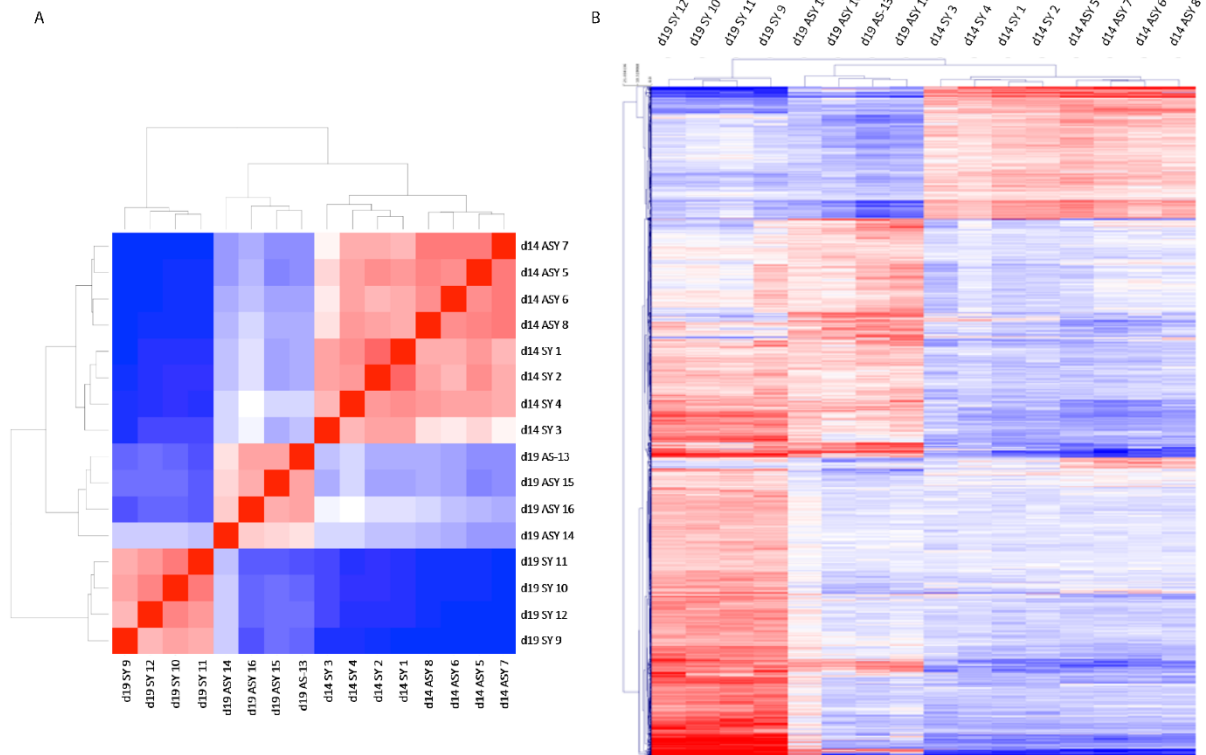


Figure 3: Pair-wise correlation heat map (A) and hierarchical cluster (B) analysis of DEGs with a log2 fold change higher than 1.4 or lower than -1.4 for equine conceptus membrane samples recovered after transfer of day 8 embryos to a synchronous (day 8: SY) or asynchronous (day 3: ASY) recipient mare, and collected on day 14 (d14) or 19 (d19) of conceptus development (blue = down-regulated genes; red = up-regulated gene). The sample number is indicated by a number from 1 to 16.

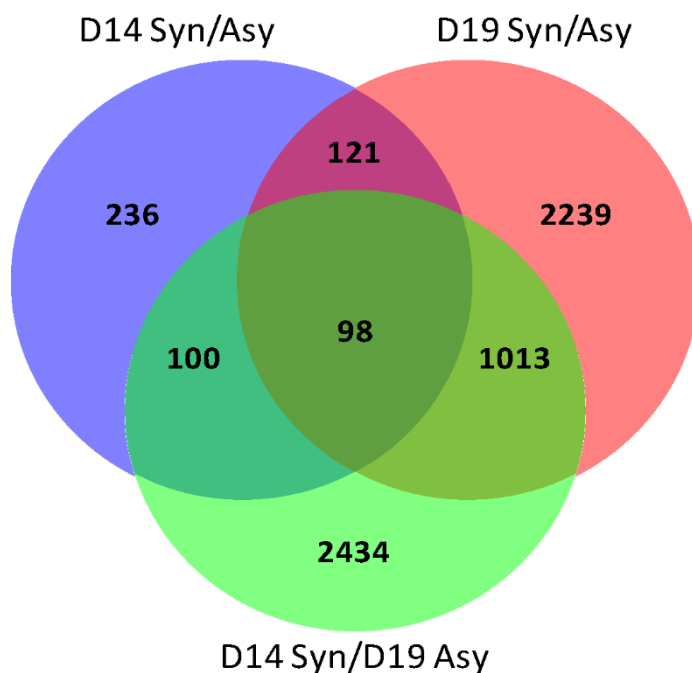


Figure 4: Venn diagram for the overlap of DEGs in equine conceptus membranes between three pairwise comparisons, day 14 of pregnancy between synchronous (day 14 recipient) and asynchronous (day 9 recipient; D14 syn/asyn) pregnancies, on day 19 of pregnancy between synchronous (day 19) and asynchronous (day 14 recipient; D19-syn/asyn), and between day 14 synchronous day 19 and asynchronous (D14-sync/D19-asyn). The numbers of DEGs in each compartment is depicted.

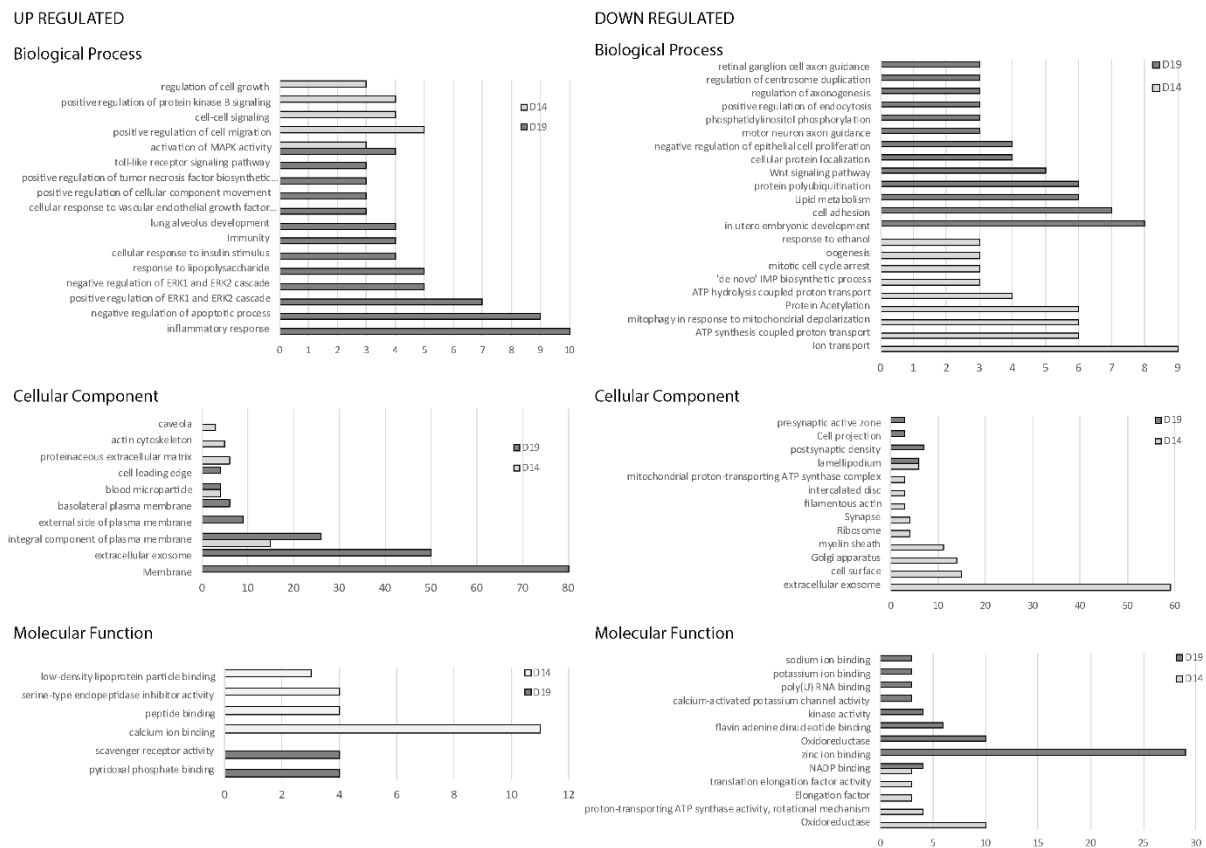
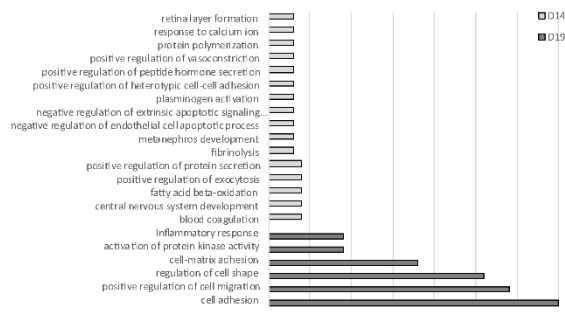


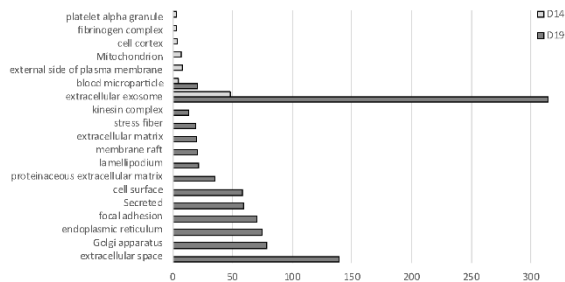
Figure 5: Gene ontology analysis for genes up-regulated and down-regulated in equine endometrium on day 14 and 19 of pregnancy between synchronous (recipient and donor ovulated on same day) and asynchronous (recipient ovulated 5 days after the donor) ET (D14 syn/asyn and D19 syn/asyn). The major categories within Biological Process, Cellular Component and Molecular Function are represented by the number of genes in the category, selected on the basis of a p-value < 0.05.

UP REGULATED

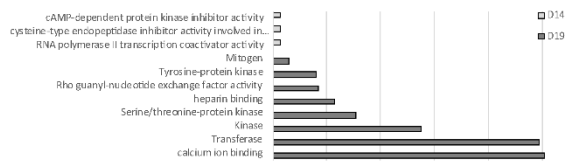
Biological Process



Cellular Component

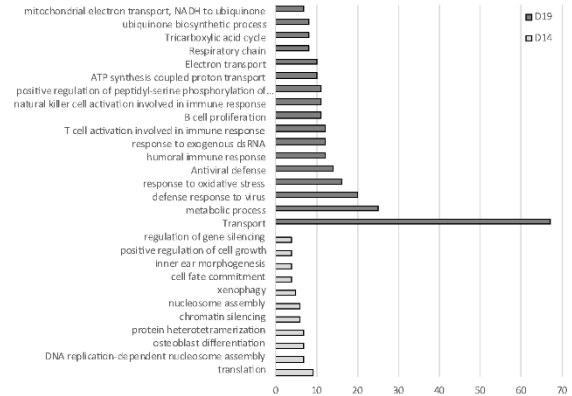


Molecular Function

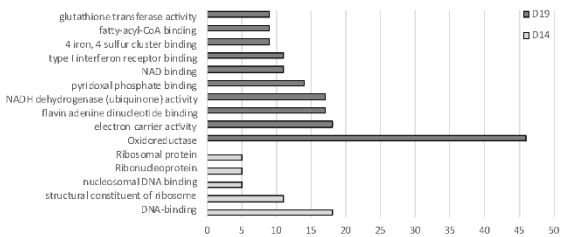


DOWN REGULATED

Biological Process



Cellular Component



Molecular Function

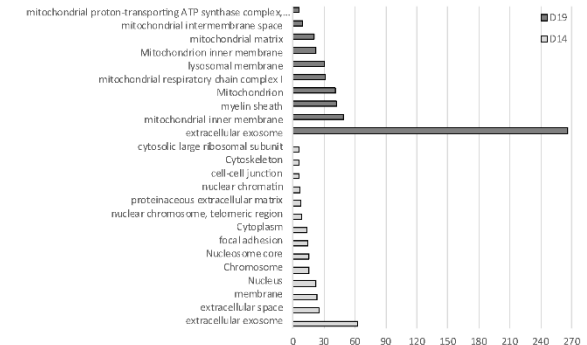


Figure 6: Gene ontology analysis for genes up-regulated and down-regulated in equine conceptus membrane, on day 14 and 19 of pregnancy between synchronous (recipient and donor ovulated on same day) and asynchronous (recipient ovulated 5 days after the donor) ET (D14 Syn/Asyn and D19 Syn/Asyn). The major categories within Biological Process, Cellular Component and Molecular Function are represented by the number of genes involved in the category, selected on the basis of a p-value < 0.05.

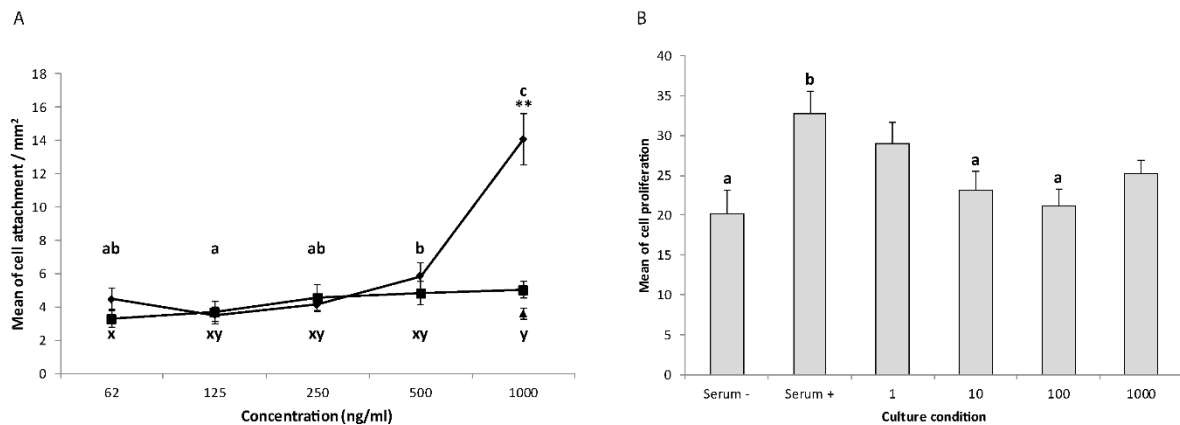


Figure 7: Effect of IGFBP3 on attachment (A) and proliferation (B) of cultured equine trophectoderm cells. For the attachment assay, wells were coated with BSA (negative control: 1000 ng/ml), fibronectin (positive control) or IGFBP3 (62, 125, 250, 500 and 1000 ng/ml). After 2 hours of culture, the number of cells attached was counted and the average number of cells attached per mm² (\pm s.e.m) calculated. The same letter indicates no significant difference ($P > 0.05$) in cell attachment in the presence of fibronectin (a,b,c) or IGFBP3 (x,y). Both fibronectin and IGFBP3 stimulated a dose-dependent increase in cell attachment, although the effect of the highest concentration of fibronectin was much larger. For the proliferation assay, cells were cultured for 30 hours and then treated with IGFBP3 (1, 10, 100 and 1000 ng/ml), normal culture media (positive control), and serum-free media (negative control) for 24 hours. BrdU was used to identify proliferating cells. The total number of cells (DAPI), and proliferating cells (BrdU positive) were counted, and the percentage of proliferating cells (\pm s.e.m) per mm² was calculated. The analysis was performed for three independent experiments, with three replicates per condition; 5 non-overlapping sections were imaged per condition. Cell proliferation was higher in the presence of serum, but was not further increased by the addition of IGFBP3.

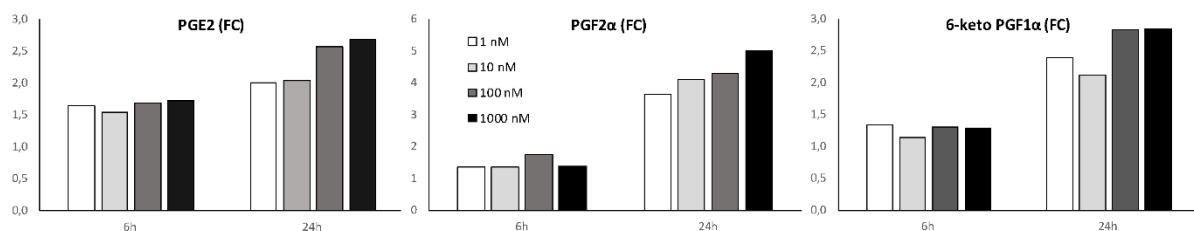


Figure 8: Effect of bradykinin on prostaglandin synthesis by equine trophectoderm cells. Cells were incubated in the presence of bradykinin (1, 10, 100 and 1000 ng/ml) for 6 and 24 hours or with serum free medium for 6 hours (negative control). The concentrations of PGE₂, PGF_{2 α} and 6-keto PGF_{1 α} (pg/ml) were measured in the culture media, and are depicted as the fold change for a given treatment versus the negative control. The analysis was performed on three independent experiments, with three replicates per condition. Bradykinin stimulation resulted in increased production of all

prostaglandins. After 24h, there was evidence of a bradykinin dose dependent increase for PGE2 secretion ($p < 0.0005$) and a tendency for a dose dependent increase in PGF2 α secretion ($p = 0.055$), but not in 6-keto PGF1 α secretion.