

QUANTUM SPACE AND THERMODYNAMIC APPROACH TO UNDERSTANDING COSMIC EVOLUTION

Carlos A. Melendres
The SHD Institute
216 F Street, Davis, CA 95616, U.S.A.
Email: camelendres@SHDInstitute.org

August 2020

Keywords:

composition and expansion of the universe, thermodynamics, phase diagram, Quantum Space, spaceons, dark energy, dark matter, cosmological constant, cosmic fluid, Quintessence, Dark Energy stars

QUANTUM SPACE AND THERMODYNAMIC APPROACH TO UNDERSTANDING COSMIC EVOLUTION

Carlos A. Melendres
camelendres@SHDInstitute.org

ABSTRACT

We present a thermodynamic approach in modeling the evolution of the universe based on a theory that space consists of energy quanta, the spaceons. From wave-particle duality, they can be treated as an ideal gas. The model is similar to the Big Bang but without Inflation. It provides an insight into the nature of dark energy and dark matter, and an explanation for the accelerated expansion of the universe.

The universe started from an atomic size volume of spaceons at very high temperature and pressure. Upon expansion and cooling, phase transitions occurred resulting in the formation of fundamental particles, and matter. These nucleate and grow into stars, galaxies, and clusters due to the action of gravity. From the cooling curve of the universe we constructed a thermodynamic phase diagram of cosmic composition, from which we obtained the correlation between dark energy and the energy of space. Using Friedmann's equations, our model fits well the WMAP data on cosmic composition with an equation of state parameter, $w = -0.7$. The dominance of dark energy started at 7.25×10^9 years, in good agreement with BOSS measurements. The expansion of space is attributed to a scalar quantum space field. Dark Matter is identified as a plasma form of matter similar to that which existed during the photon epoch, prior to recombination.

The thermodynamics of expansion of the universe was adiabatic and decelerating during the first 7 billion years after the Big Bang; it accelerated thereafter. A negative pressure for Dark Energy is required to sustain the latter. This is consistent with the theory of General Relativity and the law of conservation of energy. We propose a mechanism for the acceleration as due to consolidation of matter forming Dark Energy Stars (DES) and other compact objects. The resulting reduction in gravitational potential energy feeds back energy for the expansion. Space will continue to expand and dark energy will undergo phase transition to a Bose-Einstein condensate, a superfluid form of matter. Self-gravitation can cause a bounce and start a new Big Bang. We show how the interplay of gravitational and space forces leads to a cyclic, maybe eternal, universe.

1. INTRODUCTION

The composition of the universe is a question of great scientific interest. Our universe is essentially dark, consisting of 71% dark energy, 24% dark matter and only 5% ordinary matter, of which 0.5% is luminous. The nature of dark matter and dark energy remains unknown. Dark energy is theorized to cause the expansion of the universe, dark matter is thought to hold the galaxies together. Both remain “mysterious”.

The expansion of the universe is intimately related to that of space. The nature of space is not known but much debated [1]. It is generally viewed like a canvas where nature’s landscape and events are portrayed; it is then treated geometrically and mathematically as a surface in 4-dimensional spacetime. We present a more descriptive model of space based on the theory that it is a quantized dynamical entity which is the “cosmic fluid” that actively participates in the evolution of the universe, along with matter and radiation. The mechanism of evolution proceeds via well known physico-chemical processes. The model provides an explanation for the accelerated expansion of the universe due to dark energy, and gives an insight on the nature of dark matter.

2. A MODEL OF SPACE AND COSMIC EVOLUTION

It has been thought of that space is not truly empty, that “vacuum” contains virtual particles that pop in and out of existence, and is used to explain the Casimir effect [2]. We therefore take the view that space is associated with energy and is quantized. Space consists of energy quanta that propagate as waves described by the Planck quantum energy expression,

$$E=hc/\lambda \quad (1)$$

The symbols have their usual meaning: E, is the energy; λ , the wavelength, and h, the Planck constant; we assume their velocity to be the same as light, c. In terms of equivalent volume, we could think of them as spherical waves with energy,

$$E=(4\pi/3V)^{1/3}hc \quad (2)$$

where V is the volume. The foregoing equations define the equivalence of space (of dimension λ or volume V), and energy, analogous to the relation between energy and mass, given by Einstein’s equation, $E=mc^2$. Thus, energy is inherent in space and space in energy. We shall call the quantum units of space as “spaceons”. They can be thought of as the carrier of energy and the thread that weaves the fabric of the universe. From wave-particle duality, the spaceons can also be thought of as a gas which obeys the equation of state [3],

$$PV=N_0K_\beta T. \quad (3)$$

P is the pressure of the gas, V the volume, T the temperature, N the Avogadro number and K_β the Boltzman constant.

With this theory we can model the gross features of the evolution of the universe as follows: The universe started (at time, $t=0$) as a very small volume of an ideal gas (the spaceons) at an extremely high pressure and temperature. For example, an Avogadro number of gas particles occupying a volume of

$4.2 \times 10^{-36} \text{ m}^3$ (a spherical wave of 1 A^0 radius), at a pressure of $1.976 \times 10^{66} \text{ Pa}$ and a temperature of 10^{32} K . In this initial state of its birth, the universe consisted of “hot” spaceons and radiation in equilibrium. We shall refer to this instant as the Quantum Space Epoch. The spaceons and radiation then expanded and cooled as they propagate. In the process of cooling to appropriate threshold temperatures, phase transitions occurred resulting in the formation of gluons, fundamental particles, nuclei, and atoms. From the matter formed, gravitation caused the formation of galaxies and stars; these clumped to form clusters, local groups and superclusters. The mechanisms of matter formation follow those of the Standard Model of Particle Physics; the nucleation and growth of atoms to stars and superclusters are not completely understood as yet. The universe continues to expand until the present time. The various epochs of the evolution of the universe, in our model, are similar to those of the Big Bang [4,5,6] but does not need a Theory of Inflation to explain the homogeneous and isotropic universe.

3. RESULTS AND DISCUSSION

3.1 Composition of the Universe

Several methods are used to determine the composition of the universe. Results of the WMAP satellite studies [7] gave the composition shown in Table I soon after the Big Bang and at present:

	At the Big Bang	At Present (13.8 billion years after)
Dark Matter	63 %	24 %
Dark Energy	—	71.4 %
Ordinary Matter	12 %	4.6 %
Neutrinos	10 %	—
Photons	15 %	—

The composition during cosmic evolution has also been documented [4,5,6]. Table II shows this as a function of pressure (P) and temperature (T) at various times and Cosmic Epochs.

Table II. Composition of the Universe During Its Evolution

Time (after Big Bang)/ (Cosmic Epoch)	Temperature (K)	Pressure (Pa)	Composition
$< 10^{-12} \text{ sec/}$ (Quantum Space)	$> 10^{12}$	$> 10^{32}$	Hot spaceons, radiation, gluon “soup”
$10^{-12} \text{ to } 0.02 \text{ sec/}$ (Quark,Hadron,Lepton, Electrons,Protons,Neutrons)	$10^{11} - 10^9$	$10^{32} - 10^{27}$	I. Fundamental particles + radiation
$0.02 \text{ to } 300 \text{ sec/}$ (Nucleosynthesis)	$10^9 - 10^8$	$10^{27} - 10^{15}$	II. Nuclei of H, He,D,Li + radiation
$300 \text{ sec to } 3.8 \times 10^5 \text{ yrs/}$ (Photon to Recombination)	$10^8 - 10^3$	$10^{15} - 10^{-11}$	III. Plasma of ionized H, He and e-

3.8 x 10 ⁵ to 10 ⁹ yrs/ (Dark Ages to Matter dominated)	3 x 10 ³ - 4	10 ⁻¹¹ -10 ⁻²²	IV.Matter in galaxies,stars ,planets,gases,plasma,solid
10 ⁹ to 13.8 x 10 ⁹ yrs/ (Dark Energy dominated)	4 - 2.7	10 ⁻²² ...	V. Dark Energy

At temperatures above 10¹² K and time <10⁻¹² sec, the universe was a primeval hot gas of spaceons and radiation. Upon expansion and cooling, fundamental particles (quarks, leptons, hadrons, protons, neutrons, electrons) were created. On further cooling to about 10⁹ K, nucleosynthesis occurred to produce nuclei of H, He Li and D. At about 10⁸ K a plasma phase was formed which consisted of electrons and positive ions of H and He. Radiation (photons, neutrinos) was ever present and dominated the early epoch of the universe. Further cooling of the plasma until about 3 x 10³ K resulted in recombination of electrons with positive ions of H and He, converting the plasma to gases. As the universe continued to expand and cool, matter continued to form through the action of gravity to become stars, galaxies, and clusters. The universe

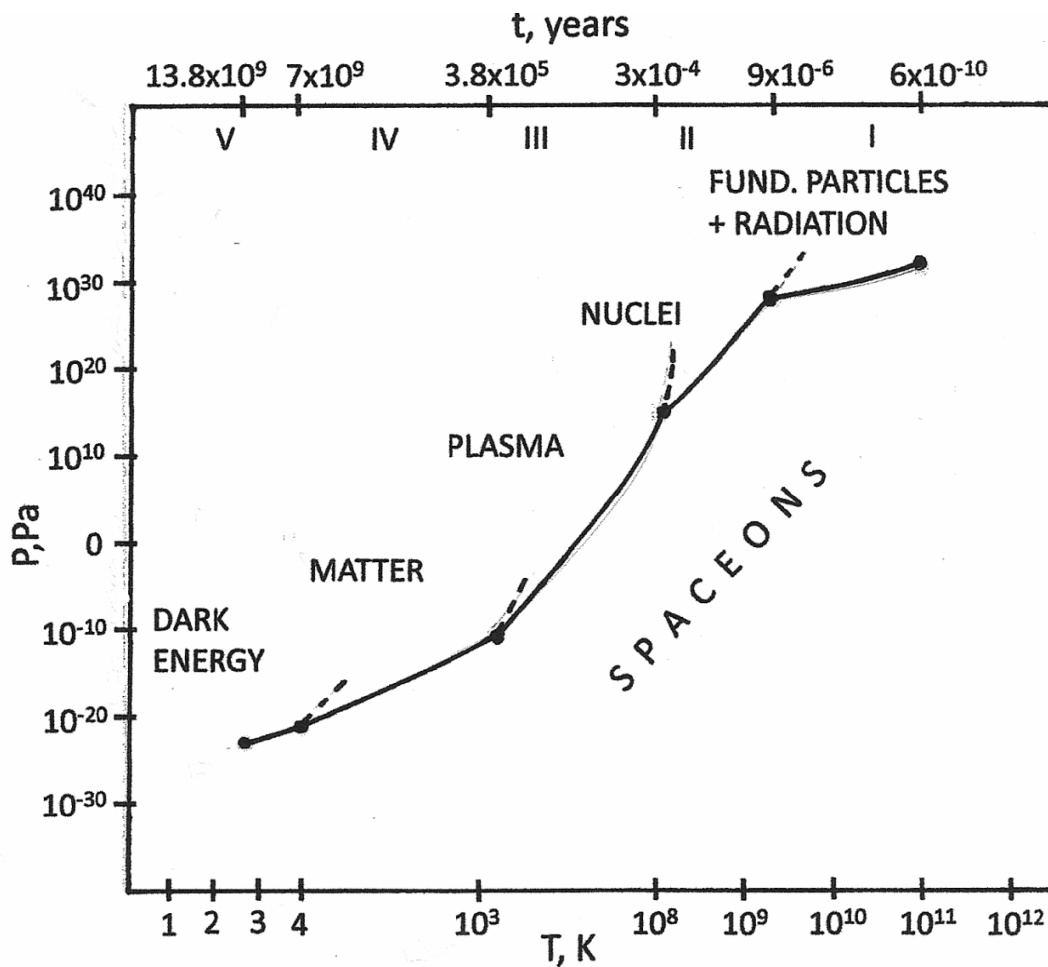


Fig. 1-Schematic Phase Diagram of the Universe with Spaceons

cooled to 2.7 K as indicated by the Cosmic Microwave background (CMB). The primary constituents of the universe are: gases (H, He), plasma of electrons, protons, and He ions, ordinary matter (gasses, solids, dust, in stars, galaxies, clusters, intergalactic space), radiation, spaceons (gas at all temperatures), and the “mysterious” dark matter and dark energy.

Thermodynamics is a very powerful method for obtaining compositional information [3,8]. From the composition as a function of time, the cooling curve of the universe, we can construct a thermodynamic phase diagram (similar to the well known water phase diagram with gas, liquid, solid H₂O of different crystalline forms). While the construction of such diagrams is standard practice in the fields of metallurgy and chemistry for the components of matter, the equivalence of matter and energy, allows one to do the same for the universe as a system. Dark energy and dark matter are components of the universe. We have therefore constructed a thermodynamic phase diagram [3,8] for our model universe with spaceons, from the cooling curve of the universe represented by the data in Table II.

The result is shown in Fig.1. (Note that the figure is schematic and the temperature is not drawn to scale in order to highlight the phases formed). The major phases are: radiation, matter (IV, solid, gasses, plasma in galaxies, stars, clusters), a plasma phase (III) formed immediately after nucleosynthesis, dark energy (V) and spaceons (gas). The broken lines indicate the overlap between various phases during the process of formation. Dark matter is not yet indicated since its nature remains unknown. All phases are in contact with spaceons at all epochs of cosmic evolution. This is as it should be since space is in contact with all elements of the universe at all times. At extremely high temperatures and pressures (right end), fundamental particles and radiation are indistinguishable from the hot spaceons; while at low temperature/pressure (left end), dark energy overlaps with the cold spaceons. These end points are critical points, where 2 phases co-exist. In the case of water, for example, at the critical temperature of 647 K and pressure of 2.2064×10^7 Pa, liquid water is indistinguishable from its vapor phase.

3.2 Dark Energy and the Expansion of the Universe

Dark energy constitutes 71% of our universe. It is hypothesized to be an unknown form of energy that permeates all of space uniformly. It is invisible and difficult to study because it does not interact with radiation, hence cannot be investigated spectroscopically. It only interacts with gravity. Its density is very low, less than ordinary and dark matter, it converts to dark matter, was less in the past than at present, and it is thought to function like an anti-gravity force. It is believed to cause the accelerated expansion of the universe [9,10,11].

Based on our model, the expansion of the universe can be thought of as the expansion of spaceons into the void (“nothingness”). It is an inherent property of space that it needs to expand in order to attain a lower energy state (longer λ_s). The expansion can be thought of as driven by the pressure and temperature differential of the hot (high energy, short λ_s) and cold (low energy, long λ_s) gas states. The expansion may be viewed from the standpoint of Quantum Field Theory [12], as arising from a force that is associated with a field. The latter is the space field from which emanate space quanta, the spaceons. (This is analogous to the gravitational field with its associated gravitational force.) It is a scalar field, dubbed “Quintessence”, that has been theorized to be the substance which comprises Dark Energy [10].

One can see from our thermodynamic phase diagram (Fig.1) that dark energy is a phase that overlaps with the new entity that we have introduced as a component of the universe, i.e.,

the spaceons; the two phases are indistinguishable. Hence, dark energy can be associated with spaceons, the energy of space. The amount of dark energy soon after the Big Bang was relatively small (Table I) because most of the energy of space was converted to radiation, fundamental particles, dark matter and ordinary matter. Its density remains low as the universe expands.

The behavior of our model universe with spaceons is well suited for mathematical treatment using the Friedmann-Lemaitre-Robertson-Walker (FLRW) metric [11]. The second Friedmann equation [10,11] delineates the contributions of the various components of the universe (matter, radiation, and vacuum) to the acceleration of expansion of the universe, i.e.,

$$d^2 a/dt^2 = -(8\pi G a/3) \{ (1/2) \rho_m + \rho_r - \Lambda/8\pi G \} \tag{4}$$

We have neglected the curvature term, k , normally appearing in 4), by adopting a model of simple Newtonian gravity rather than Einstein's spacetime model. In the above equation, a is the scale parameter, G the gravitational constant; ρ_m is the mass-energy density of matter, ρ_r that of radiation, and Λ , the cosmological constant which represents the energy of the vacuum [10]. Based on our model of space, "vacuum energy" is no longer a meaningful term to use; it is preferable to use the term "energy of space". The cosmological constant will then be replaced by the energy density of space, i.e.

$$d^2 a/dt^2 = -(8/3)\pi G a \{ (1/2) \rho_m + \rho_r + (\rho_s + 3P_s) \} \tag{5}$$

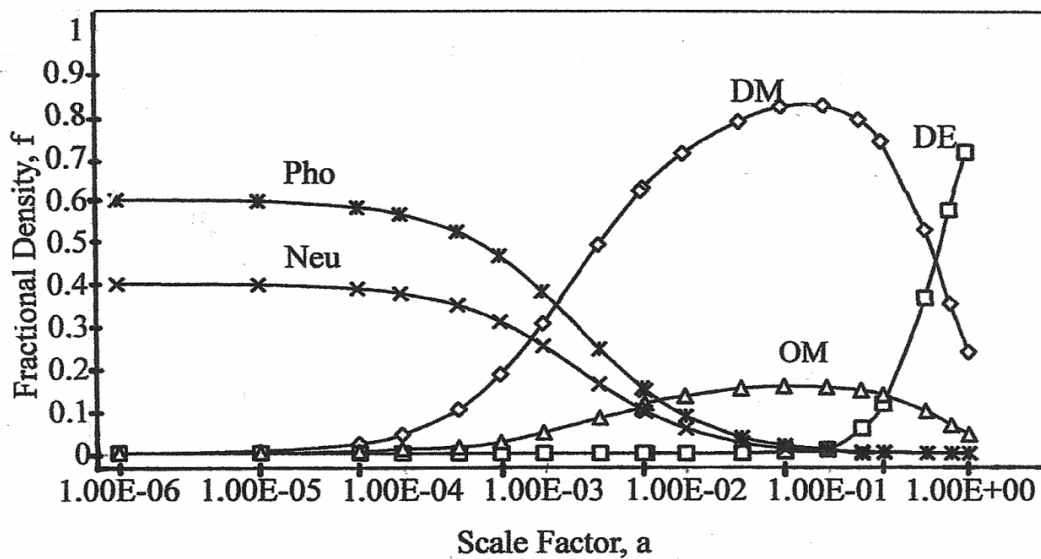


Fig.2- Fractional Energy Density (f) vs Scale Factor (a), fit with $w_s = -0.7$
 DE-Dark Energy; DM-Dark Matter; OM-Ordinary Matter; Pho-Photons;
 Neu-Neutrinos

where ρ_s is the energy density of space. It is related to the pressure P_s via the equation of state $P_s = w_s \rho_s$ and w_s is the equation of state parameter. A negative pressure would give rise to a positive term for the contribution of ρ_s that can cause an acceleration of the expansion.

For the purpose of fitting the observed data (Table I), it is preferable to use another form of the Friedmann equation. It is common to utilize one involving the Hubble constant, H , which is measured in experiments and to use velocity, da/dt , rather than acceleration [9,10,11]. Thus,

$$a H^2 = (da/dt)^2 a^2 = (H_0)^2 [\Omega_m a^{-3} + \Omega_r a^{-4} + \Omega_s a^{-3(1+w_s)}] \quad (6)$$

$H=(da/dt).a$, H_0 its value at the present time; ρ_i is the density parameter for component i , ρ_c is the critical energy density of the universe (the density of the universe at the present time) and $\Omega_i = \rho_i/\rho_c = f$, the fractional energy density.

A plot of fractional energy density as a function of of “ a ” can be constructed to fit the measured composition of the universe at about the time of the Big Bang and at the present time (see Table 1)

The plot in Fig. 2 shows the evolution of the composition of the universe. The dominance of radiation, matter, and dark energy at different times is amply illustrated. As can be seen there is good fit of the data summarized in Table I at time $t=13.8$ billion years ($a=1$) and at the time of the Big Bang, at $t=380,000$ years ($a=5.25 \times 10^{-3}$, redshift $z=1089$), with an equation of state parameter, $w_s = -0.7$. Dark Energy is very small in the early universe as most of the energy is used in the creation of radiation and particles. As the universe expands, however, the energy densities of radiation and matter continue to dilute and are eventually overcome by the energy density of Dark Energy. This occurs at around 7 billion years at which time the expansion of the universe starts to accelerate. We call this the transition time, t_r . This result has been established by baryon acoustic oscillation measurements in the BOSS project [13,14] and supernova measurements [18]. Fig.3 lends support to these findings. One sees that the fractional energy density of Dark Energy (DE1) crosses that of total matter (TM1) at $a=0.65$, with $t_r=7.25 \times 10^9$ years.

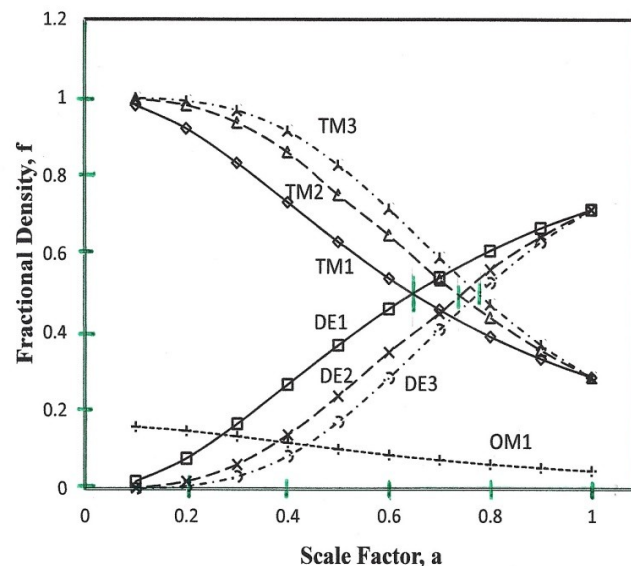


Fig.3- Fractional Energy Density (f) vs Scale Factor (a)
 DE1- Dark Energy; DM1-Dark Matter; OM1-Ordinary Matter; TM1- Total Matter for $w_s = -0.7$; DE2, TM2 for $w_s = -1$; TM3, DE3 with Phantom Energy model, $w = -1.2$

Siegel [15] has obtained a similar fit using a cosmological constant but did not give a value for the transition time. Our calculation with a cosmological constant ($w = -1$) yielded a time of 8.75×10^9 years ($a=0.74$), Fig. 3, broken line, DE2, TM2. Result for $w = -1.2$, corresponding to the so-called Phantom Energy model [16] yields an even later transition time of 9.2×10^9 years (DE3, TM3). The measurement of transition time, t_r , appears to be a good test for the suitability of a model for Dark Energy.

The concept of a constant energy density for space leads to some difficulties. The cosmological constant is considered to be equal to the energy of the vacuum. Calculations give a 120 orders of magnitude for the calculated value of the density of dark energy; this is catastrophically wrong. Moreover, the constancy of dark energy in the course of cosmic evolution is also thought to be unlikely [17]. It also poses difficulties in answering the question of where the energy comes from during the expansion of the universe. It is more reasonable to expect that the energy density would dilute as the universe expands for all forms of energy (Fig 4). Quintessence [17], with spaceons as the cosmic fluid component of the universe, appears to be the better explanation for dark energy.

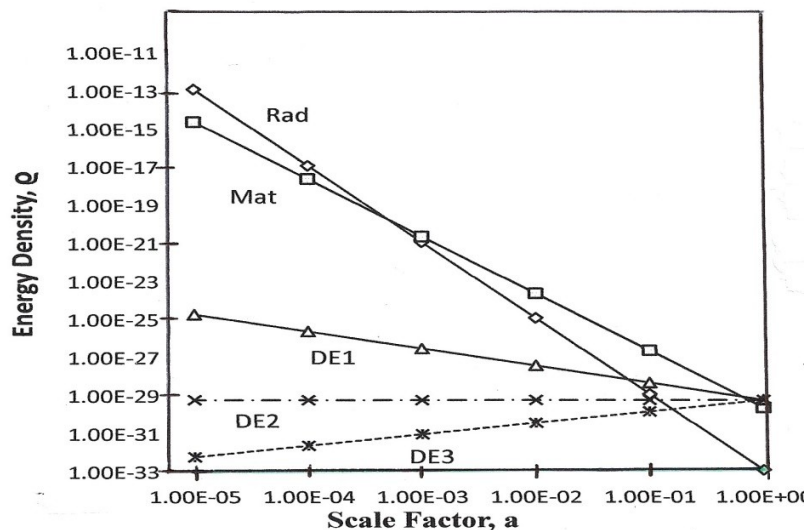


Fig 4. Energy Densities (ρ , g/cm^3) vs Scale Factor (a) for 3 models of Dark Energy; Rad-total radiation; Mat-total matter; DE1-Dark Energy with $w_s = -0.7$; DE2- $w = -1.0$ (Cosmological Constant); DE3- $w = -1.2$ (Phantom Energy Model)

3.3 THERMODYNAMICS OF EXPANSION AND ACCELERATION

In our model, the universe started with a finite amount of energy. Expansion was assumed to be adiabatic, i.e. no energy transfer in and out of the universe. From thermodynamics,

$$Q = dE + PdV = 0, \quad (7)$$

where Q is the energy flowing into or out of the system, dE the change in internal energy, P the pressure, and dV the change in volume during the expansion. The work to create space, PdV , is done at the expense of the internal energy, i.e. $dE = -PdV$ or

$$dE/dV = -P, \quad (8)$$

the slope of the dE/dV plot is negative. One can also derive the relation,

$$H = (1/4\pi r^3) [(dV/dE)] (dE/dt) \quad \text{or} \quad (9)$$

$$dE/dt = 4\pi r^3 H [dE/dV] \quad (10)$$

where, r , is the radius of the universe, and H is the Hubble constant, proportional to expansion velocity. To a first approximation, a decrease in H indicates a decrease in internal energy of the universe with time, t . BOSS studies of Busca et al [13, Fig 21.], show the expansion of the universe

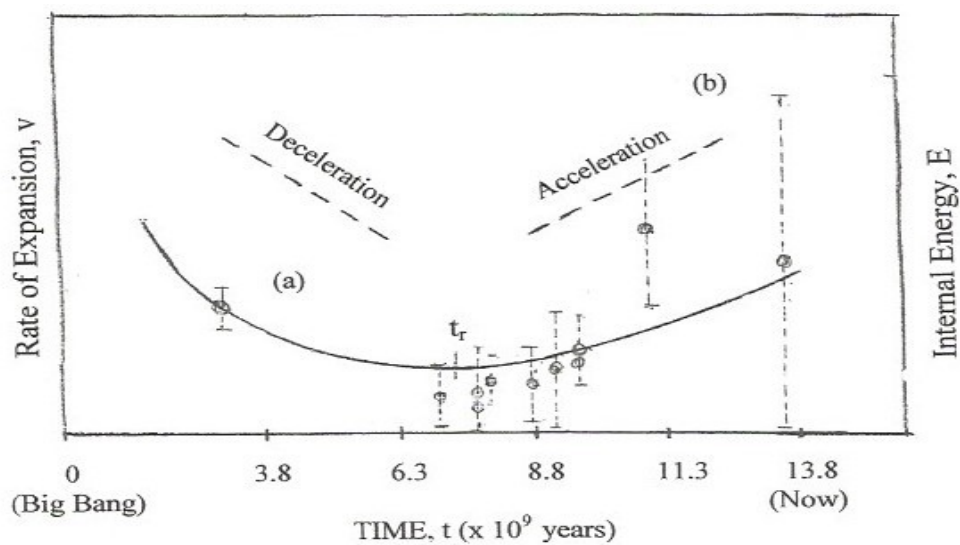


Fig 5.a. Rate of expansion of the Universe (v) as a function of time (t) (from ref. 14); t_r -transition time from deceleration to acceleration
b. schematic of change in internal energy E with time, slope= dE/dt

to be slowing down during the first 6 billion years after the Big Bang. This is consistent with our model universe with the expansion being adiabatic initially, i.e. $dE/dt = -$. While it is not very clear, from the scatter of the data in [13], unpublished figure by a Berkeley group [14] shows more data points indicating that it reached a minimum around 7.5 billion years (Fig 5). Turner and Riess [18] have also shown that the universe changed from deceleration (during the matter dominated epoch) to acceleration at a redshift, $z=1$ or $t=7 \times 10^9$ years. The expansion velocity increased thereafter. The slope dE/dV (and that of dE/dt) became positive at large z .

Thermodynamically,

$$dE/dV = (dQ/dV) - P = + \quad (11)$$

that is, Q is no longer zero. the expansion has become non-adiabatic. This means a possible ingress of energy from outside the universe. Thermodynamics points to the possibility that the accelerated expansion of the universe occurred with an "injection" or "leak" of energy from outside

the universe, if it is open. However, there is no evidence at the present time that “something” exists outside the universe to support this. Thus the expansion must remain adiabatic. Thermodynamics then demands that for the accelerated expansion to continue; the Pressure, P , in equation (11) must be negative. It is interesting to note that this is just what is required by the Theory of Relativity (in the second Friedmann equation, 4 above). It is the negative pressure thought to be associated with Dark Energy. It is important to note that the negative pressure is not due to a repulsive form of gravity, as is often theorized.

We now try to answer the question of where the energy comes from to sustain the accelerated expansion by dark energy. The negative pressure means work is done on the system and energy is added to it. A likely source is the gravitational field through the action of gravity. One can consider that gravity exerts an attractive force on matter/space that causes them to contract and the energy of space to increase. As an analogy, imagine a rubber hose filled with running water. Squeezing the hose momentarily shrinks its diameter and causes water to squirt out.

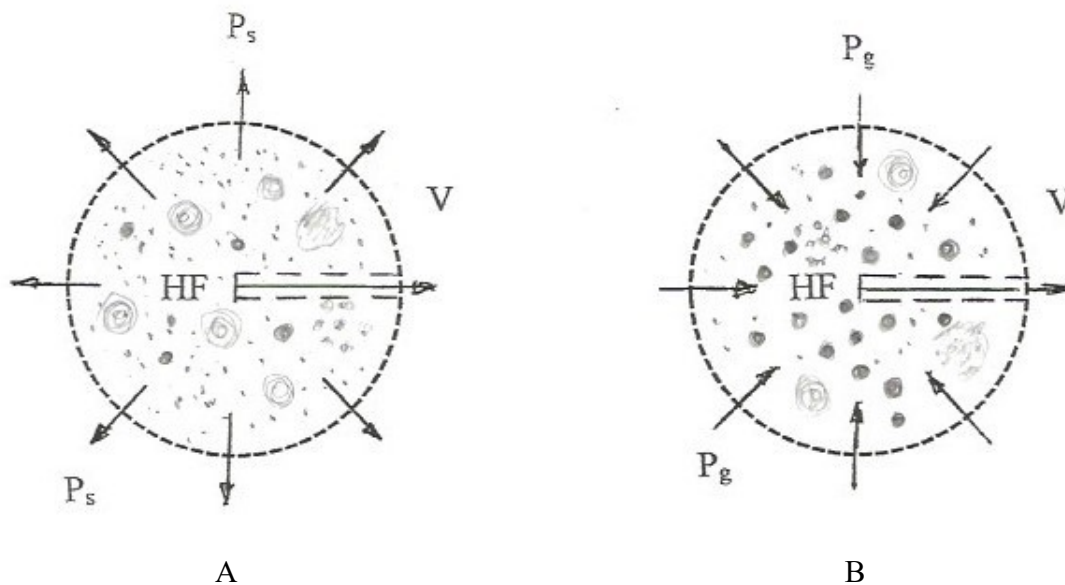


Fig 6. Schematic of the Universe during the period of deceleration (A) and acceleration (B)

$P_s = +$, pressure due to space; $P_g = -$, pressure due to gravitational Force; HF= Hubble flow; V = Void; dots=stars, spirals=galaxies, dark circles=compact objects and black holes/dark stars, diffuse circles= gas clouds and clusters

Fig. 6A shows schematically the state of the universe during the period of deceleration ($5-7 \times 10^9$ yrs) in the matter dominated epoch. Consider the cosmic fluid flowing through a tube (dash lines) within the universe. The Hubble flow (HF) is slowing down until it comes nearly to a halt. The pressure of the universe is outward ($P_s = +$) due to the inherent property of space (the spaceons) to expand into the void; the slope dE/dV is negative (equation 7). In Fig 6B, at the transition point, the attractive force of gravity starts to squeeze the universe and exerts a pressure inward ($P_g = -$);

now dE/dV is positive. In the process, the “cosmic fluid” contained in the tube is squeezed out much like that of the rubber hose. The fluid velocity or the Hubble flow increases, manifesting itself as an accelerated expansion of the universe.

We try to further quantify the above mechanism. Following the Big Bang, matter, the expansion of the universe proceeded with the formation of matter, stars, galaxies, clusters, and superclusters from H and He (Fig 6A). Through the action of gravity they later consolidate and form dwarf stars, neutron stars, other compact objects, and black holes (dark circles in Fig 6B). These grow by mergers and accretion of nearby materials (gas, dust, etc) which get compressed by gravity resulting in ever smaller volume of matter whose size approaches infinite density, the so-called singularity in a black hole. Chapline [19] has questioned the reality of black holes and proposed an alternative theory where matter infalling into the event horizon, undergoes a phase transition into dark energy [20]. The theory resolves a question associated with black holes, i.e., the loss of information when matter is swallowed by the black hole as it crosses the event horizon. It also explains other cosmic phenomena not explained by black holes. He suggested the name “Dark Energy Stars” for Black Holes. Likewise, Mazur and Mottola [21], as well as Barcelo, et al [22], have proposed similar theories and suggested the name Gravastars and Black Stars respectively. Rovelli et al [23,24], used Loop Quantum Gravity to show that a singularity can be prevented via a “big bounce” mechanism by which the gravitational pressure acting on matter is balanced by an opposite degeneracy-like pressure of the core. They called these compact objects “Planck Stars”. They eventually explode, releasing energy and the information they contain; this solves the information loss paradox associated with Black Holes. We favor Chapline’s model as providing a better description of the observed universe and in line with our model. We henceforth adopt the name Dark Energy Stars in place of Black Holes. We will also call the singularity at its core as a “Quantum Well”. This removes the mystery of what happens to matter inside the Black Hole, leaving the more positive impression of a two-way traffic for matter and energy within these compact objects, and that information is stored and never lost.

Dark Energy stars and dense compact objects will have an “equivalent mass-energy” of M_i . The gravitational potential energy of the universe becomes more negative due to much greater “masses” of these dense gravitating bodies vs H, He atoms, metals in dust, stars, galaxies, etc with masses m_i . One can calculate the total gravitational potential energy change between the present time t_p and that at the time of transition, t_r , at the beginning of the accelerated expansion (7.25×10^9 years), for all pairs of matter in the universe (Fig 6A). The total energy at the present time, t_p , is

$$U_p = -G [M_i.M_j/R + m_k.m_l/r + M_i.m_k/s + \dots], \quad (12)$$

summed over all pairs of masses $M_{i,j,k,l,\dots}$ of compact objects in the universe with separation distances, $R_{i,j}$; $m_{i,j}$ are the masses of all other matter and $r_{i,j}$ being their respective distances of pair separation (Fig 6B). Similarly, we can calculate the total potential energy at the transition time, t_r , to give U_t . The difference in potential energy, $\Delta U = U_p - U_t$, will be more negative due to the larger masses of the consolidated bodies and their relatively shorter distances of separation. (Note that the size of the universe at present is about 4 times that at 7.25 billion years, which is not shown in Fig 6. We simply show the calculational procedure involve.) This decrease in

gravitational potential energy is what provided the energy that fed the further expansion of the universe.

4. ON THE NATURE OF DARK MATTER

Finally, we say some words about the other component of our invisible universe, i.e., dark matter. Its known characteristics match well those of a component present in our Phase Diagram (Fig.1). Dark matter [25] comprises 84% of the total mass of matter in the universe. At present, it makes up 24% of the total mass-energy of the universe. It remains a mysterious, hypothetical form of matter.

Among properties that have been reported in the literature are: as

- 1). it neither emits or absorbs electromagnetic radiation, hence it is difficult to study.
- 2). it moves without friction.
- 3). it can only be detected through its gravitational effects on the motion of galaxies.
- 4). it is spread over large areas, like a cloud, and forms a “halo” around galaxies and clusters; its density decreasing as one moves away from the center [26].
- 5). it is also found in filaments between galaxies and clusters [27]. It has been observed that ordinary matter traces the path of dark matter; this has been attributed to a strong interaction between ordinary matter and dark matter. The search for the mediator of this interaction, thought to be the Z' boson, is being pursued actively [28].

We proceed with the premise that all components of the universe were formed during cosmic evolution and would have left their footprints in the sands of time, e.g, the CMB. The phase diagram (Fig.1) shows that the major phases in the formation of the universe are dark energy, ordinary matter (gasses, solids), and plasma. Any present-day component of the universe must originate from one of these phases. From the observed properties of dark matter, and known characteristics of plasma [29], it appears reasonable to make the assignment that dark matter corresponds to the plasma form of matter that existed during the photon epoch, just before recombination (and after reionization). At this time the universe was opaque due to scattering of all photons by free electrons and protons. The following facts support this contention:

- 1). WMAP data, mentioned earlier, show that dark matter constitutes the major component of the universe soon after the Big Bang. During this time, the universe consisted of a hot plasma of electrons, and ionized H and He. It was opaque and cannot emit or absorb light. This state persisted until about 380,000 years after the Big Bang at which time recombination took place and the universe became transparent.
- 2). Other characteristics of plasmas match exactly those of dark matter. Plasma, like dark matter, hangs around like a cosmic fog around galaxies and clusters, making it invisible and difficult to characterize.
- 3). That ordinary matter traces the path of dark matter can be explained by the fact that upon recombination of electrons and positive ions in the dark matter plasma, ordinary matter is formed; the plasma evaporates into H and He gasses. Thus ordinary matter tracks the trail of dark matter, as can be observed in a close look at the web structure of the universe..
- 4). Filamentation is a characteristic of plasmas; they move without friction, since the ions do not have attractive interaction and move collectively instead [29]. This lack of interaction also explains the origin of dark matter halos [30,31] that hover around galaxies.

5). The dark matter plasma scatters elastically and hence do not clump or “stick together” thus remaining diffuse, fluffy, and “halo-like”. Hence, galaxies cannot form directly from dark matter.

Energy exchange between the dark matter plasma and the surrounding hydrogen has been observed to provide a mechanism for energy exchange between the two states of matter [30]. This is consistent with (3) above. Finally, plasma constitutes the major form of matter in the universe [29], most of it invisible. The study of the enhanced recombination processes in astrophysical plasmas [31] is yielding interesting results that lend support to our theory of the origin of Dark Matter. Dark matter being a plasma form of matter seems closer to reality than exotic particles, like WIMPS, MACHOS, etc. [32] whose existence have not been demonstrated. More extensive studies of astrophysical plasmas would be a good route to understanding the nature of dark matter.

5. NATURE AND PROPERTIES OF SPACE QUANTA

Our Quantum Space Model provides a physical picture of space and match well published data on the composition of the universe at various epochs of evolution. It is a hypothesis that needs further proof, although it already suggests some properties of space and space quanta:

1). They differ from electromagnetic radiation, hence cannot be detected by spectroscopic techniques. The spaceons do not carry charge while photons do. Space also differs from gravity. The space force exerts a pressure that counteracts the force of gravity; it is the repulsive force that prevents dark energy stars from total collapse (singularity); this can be aptly called “space degeneracy”. It causes the bounce that propels a new Big Bang leading to a cyclic universe.

2). They are associated with a scalar field rather than the vector field of electromagnetic waves. Recall that at the “beginning”, there were only energy and space from which were “born” radiation first and matter later. We suggest that it is the fifth Quantum Field and the origin of all fields in the universe, i.e., the “mother field” of the four force fields and two matter fields [12].

3). The space quanta (spaceons) are the carrier of energy in the universe. From this emanate radiation and all matter, as condensation products in the process of phase transformation and evolution. They are analogous to the Higgs boson which transmits the energy of the Higgs Field [34] or a similar scalar field due to coupling of another particle to the Higgs Field, as theorized by Krauss and Dent [33]. The expansion of the universe is the expansion of space; the density of matter slows down the process and is accelerated by the dominance of dark energy. Space also acts as the container and reservoir of energy in the universe. Thus, virtual particles pop in and out of space, when matter and anti-matter annihilate and disappear. When dwarf stars, neutron stars, and other compact objects die, the energy goes back to space.

4). Dark energy is pervasive and long range but opposite to that of gravity. We theorize that it is the energy associated with the Space Field transmitted by its quanta, the spaceons, although we do not as yet know the mechanism of its interaction.

6. THE FATE OF THE UNIVERSE

It is of interest to say a few words about the possible ultimate fate of the universe based on its current state and in the light of our model. If the behavior discussed in 3.3 continues its course with increasing volume and decreasing temperature/ pressure. the universe will eventually reach a point of thermodynamic equilibrium where there is no free energy available to do further work. It would end up in a state called a Deep Freeze [34] at 0 K. However, it will not remain as an ideal gas but will undergo a phase transition into a form of matter known as a Bose-Einstein condensate as theorized by Chapline et al [19,20] and Mazur and Motola [21]. The condensate will be at its critical point in equilibrium with spaceons. If it exerts self-gravitation, as does all other forms of energy, this can result in a “kugelblitz” [36] and bounce to start another Big Bang. It would then start a cycle as a new universe [34,37].

Matter in Dark Energy stars will, through the compressive action of gravity, also transform into atoms, quarks, quark-gluon “soup” [35], spaceons and to Bose-Einstein condensates. The transformations would occur at the core of the Dark Energy Star, i.e., at the “Quantum Well”, where an almost infinite amount of energy is stored (recall, $E \propto 1/V^{1/3}$ with V approaching 0). It will then bounce and start a Big Bang, continuing on a new life in a cyclic universe [34,37].

Other matter and radiation remaining in the “old” universe from the death of stars will be incorporated as parts of gas dust, nebulae and galaxies in patches of the new universe. It may well be that the final result will be an agglomeration of small universes, that is “miniverses”.

It is interesting to note how our Quantum Space model shows the interplay of the gravitational and space forces in preserving the law of conservation of energy and leads to a cyclic universe.

7. CONCLUSION

A thermodynamic approach, using a Quantum Space model, appears useful in understanding the composition and evolution of our dark universe. Dark energy is the energy of space and the cosmic fluid that is the component of the universe responsible for its expansion. It is associated with a scalar field, dubbed as Quintessence. Dark matter, on the other hand, is a plasma form of matter, similar to the state of the universe at the photon epoch, before recombination and after reheating, following the dark ages. It is the precursor in the formation of ordinary matter. Dark energy and dark matter are neither “dark” nor “mysterious”, they are just invisible; one is transparent, while the other is opaque. Further work is necessary to better understand the nature and properties of the quantum space field and spaceons. The study of astrophysical plasma would be a good way to understand the nature of dark matter. Our model brings into question some long standing concepts in the physical sciences. The concept of the vacuum appears outdated; the term “vacuum energy” should be more appropriately called “space energy”. The Theory of Inflation, also needs to be reexamined; it appears unnecessary to produce a homogeneous and isotropic universe. Finally, thermodynamics indicates that the acceleration in expansion of our universe maybe related to a non adiabatic process, if it is open, due to an influx of energy from “outside” the universe. Lacking any evidence of a multiverse, our universe would continue to expand adiabatically with a negative pressure, as thermodynamically required for energy conservation, consistent with the Theory of General Relativity and Friedmann’s equation. We provide a mechanism to explain the acceleration in Hubble Flow as due to the decrease in gravitational potential energy of the universe resulting from the consolidation of matter and space into Dark Energy stars and other compact objects. The acceleration should not be interpreted as due to a

repulsive form of gravity. The dark energy (spaceons) in the universe will wind up as a Bose-Einstein condensate form of matter. Self-gravitation could result in a Kugelblitz leading to a bounce and the start a new Big Bang. Matter and space in Dark Energy stars would also be converted to spaceons and Bose Einstein condensate, undergo a bounce, and start a new Big Bang. Our Quantum Space model fits well the behavior of the observable universe and shows how gravity and space maybe the “key and spring” that run a clockwork cyclic universe. It could be useful in developing a unified theory of quantum behavior and gravity.

8. REFERENCES

1. Futch, M., Leibniz, *Metaphysics of Time and Space*, Springer, NY (2008)
2. Jaffe, R.L, The Casimir Effect and the Quantum Vacuum. in: *Physical Review D*. **72**, (2005)
3. Atkins, P. and De Paula, *J. Physical Chemistry*, W.H.Freeman, NY (2014)
4. Silk, J. *The Big Bang*, W.H. Freeman, N.Y. (1989)
5. Weinberg,S., *The First Three Minutes*, Basic Books, NY (1977)
6. Delsemme, A., *Our Cosmic Origins*, Cambridge University Press,UK (1998)
7. Bennett, C.L.; Larson, L.; Weiland, J.L.; Jarosk, N.; et al. "Nine-Year Wilkinson Microwave Anisotropy Probe (WMAP) Observations: Final Maps and Results". *The Astrophysical Journal Supplement*. **208** (2): 20 (2013)
8. Kirkwood, J.G. and Oppenheim, I. *Chemical Thermodynamics*, McGraw-Hill, NY. (1961)
9. Frieman, J. A.; Turner, M. S.; Huterer, D. "Dark Energy and the Accelerating Expansion of the Universe". *Annual Review of Astronomy and Astrophysics*. **46** (1): 385–432 (2008)
10. Stenger, V.J., *The Comprehensible Cosmos*, Prometheus Books, N.Y. (2006)
11. Weinberg, S., *Cosmology*, Oxford University Press, Oxford, UK (2014)
12. Zee, A., *Quantum Field Theory in a Nutshell*, 2nd edition, Princeton Univ Press, NJ (2010).
13. Busca, N.G.; Delubac, T; Rich, J., et al, “Baryon Acoustic Oscillations in the Ly- α Forest of BOSS Quasars”, *Astronomy and Astrophysics*, **552**, A96 (2013)
14. Preuss, P. in <https://scitechdaily.com/scientists-use-quasars-to-probe-dark-energy-and-measure-its-role-in-the-evolution-of-the-universe/>
15. Siegel, E., personal communication, August 2016
16. Caldwell, R. R. "A phantom menace? Cosmological consequences of a dark energy component with super-negative equation of state". *Physics Letters B*. **545** (1–2): 23–29. (2002).
17. Zlatev, I.; Wang, L.; Steinhardt, P. "Quintessence, Cosmic Coincidence, and the Cosmological Constant". *Physical Review Letters*. **82** (5): 896–899 (1999)
18. Turner, M and Riess, A “Do Type Ia Supernovae Provide Direct Evidence for Past Deceleration in the Universe?”, *Astrophysical Journal*, **569**, 18–22, (2002)., also in Ries, A and Turner, M., *Scientific American*, February 2004, p 62
19. Chapline, G. "Dark Energy Stars". *Proceedings of the Texas Symposium on Relativistic Astrophysics:101*. (2005);*arXivarXiv:astrph/0503200*.
20. Chapline, G; Hohlfield, E.; Laughlin, R. B.; Santiago, D. I. "Quantum Phase Transitions and the Failure of Classical General Relativity". *International Journal of Modern Physics A*. **18** (21): 3587–3590 (2003).
21. Mazur, P.O., Mottola, E.: Gravitational condensate stars: an alternative to black holes. *Proc. Nat. Acad. Sci*. **101**, 9545 (2004).

22. Barceló, C, Liberati, S, Sonego, S and Visser, M, Fate of gravitational collapse in semiclassical gravity, *Phys. Rev. D* **77**, 044032 (2008)
23. Barrau, A and Rovelli, C- Planck Star Phenomenology, *Physics Letters B*, **739**, 405 (2014)
24. Haggard, H and Rovelli, C- Black hole fireworks: quantum-gravity effects outside the horizon spark black to white hole tunneling, *Phys. Rev. D* **92**, 104020 (2015)
25. Trimble, V. "Existence and nature of Dark matter in the universe". *Annual Review of Astronomy and Astrophysics*. Palo Alto, CA, Annual Reviews, Inc. **45**: 425–472 (1987).
26. De Rujula, A, Jetzer, P, Masso, E, "On the Nature of the Dark Halo of Our Galaxy", *Astronomy and Astrophysics*, **254**, 99, (1992)
27. Dietrich, J., et al, "A filament of dark matter between two clusters of galaxies", *Nature* **487**, 202-204 (2012).
28. Adachi, I., et al, "Search for an Invisibly Decaying Z0 Boson at Belle II in $e^+e^- \rightarrow \mu^+\mu^-\delta e\mu^+\mu^-$ Plus Missing Energy Final States", *Phys. Rev. Lett.* **121**, 141801 (2020)
29. Gurnett, D.A.; *Introduction to Plasma Physics: With Space and Laboratory Applications*, Bhattacharjee, A., Cambridge University Press, UK (2005)
30. Bowman, J.D., Rogers, A.E, Monsalve, R.A. et al, "An absorption profile centered at 78 megahertz in the sky-averaged spectrum", *Nature* **555**, 67 (2018)
31. Nemer, A., Sterling, N.C., Raymond, J., et al, First Evidence of Enhanced Recombination in Astrophysical Environments and the Implications for Plasma Diagnostics," *The Astrophysical Journal Letters*, **887**, L9 (2019)
32. Griest, Kim. "The Search for the Dark Matter: WIMPs and MACHOs". *Annals of the New York Academy of Sciences*. **688**, 390–407 (1997)
33. Krauss, L M. and Dent, J. B., A Higgs–Saw Mechanism as a Source for Dark Energy, *Phys. Rev. Lett.* **111**, 061802 (2013)
34. Davies, P *The Last Three Minutes: Conjectures About The Ultimate Fate Of The Universe*, Basic Books, (1997).
35. C. Aidala *et al.*, "Measurements of azimuthal anisotropy and charged-particle multiplicity in d + Au collisions at $(\sqrt{s_{NN}})^{1/2} = 200$ ", 62.4, 39, and 19.6 GeV, *Phys. Rev. C* **96**, 064905 (2017)
36. Lee, J.S, "The effect of Hawking Radiation on Fermion re-inflation of a Schwarzschild Kugelblitz", *Journal of the British Interplanetary Society*, **66**: 364–376.(2013)
37. Steinhardt, P.J., Turok, N."A Cyclic Model of the Universe", *Science*, **296**, 1436-1439 (2001)

