

# Fabric Phase Sorptive Extraction Explained

**Abuzar Kabir \*, Rodolfo Mesa, Jessica Jurmain, Kenneth G. Furton**

International Forensic Research Institute, Department of Chemistry and Biochemistry,  
Florida International University, 11200 SW 8<sup>th</sup> Street, Miami, FL 33199, USA

\*Corresponding author: E-mail: akabir@fiu.edu. Tel.: +1 305 348 2396; Fax: +1 304 348 4172;

## ABSTRACT

The theory and working principle of fabric phase sorptive extraction (FPSE) is presented that eloquently explains the mystery behind this new and powerful sample preparation technique. FPSE innovatively integrates the benefits of sol-gel coating technology and the rich surface chemistry of cellulose/polyester/fiberglass fabric, resulting in a microextraction device with very high sorbent loading in the form of an ultra-thin coating. This porous sorbent coating and the permeable substrate synergistically facilitate very fast extraction equilibrium. The flexibility of the FPSE device allows for direct insertion into original, unmodified samples of different origin. Strong chemical bonding between the sol-gel sorbent and the fabric substrate permits the exposure of FPSE devices to any organic solvent for analyte back-extraction/elution and to highly acidic or basic environments (pH 1-12) if required. A sol-gel derived sorbent, highly polar sol-gel poly(ethylene glycol) coating, was generated on cellulose substrates. Five cm<sup>2</sup> segments of these coated fabrics were used as the FPSE devices for sample preparation using direct immersion. An important class of environmental pollutants, substituted phenols, was used as model compounds to evaluate the extraction performance of FPSE. The high primary contact surface area (PCSA) of the FPSE device and porous structure of the sol-gel coatings resulted in very high sample capacities and incredible extraction sensitivities for both the compound classes in a relatively short period of time. Different extraction parameters were evaluated and optimized. The new extraction devices demonstrated part per trillion level detection limits for substitute phenols, a wide range of detection linearity, and good performance reproducibility.

**Keywords:** fabric phase sorptive extraction (FPSE); sol-gel; phenols; environmental pollution; sample preparation; microextraction

## 1. Introduction

Sample preparation is an important but often neglected step in chemical analysis[1]. The importance of an efficient sample preparation technique becomes more inevitable when dealing with trace and ultra-trace levels of target analyte(s) dispersed in complex sample matrices e.g., environmental, pharmaceutical, food, and biological samples. These samples are not generally suitable for direct injection into the analytical instrument. Three main factors may be attributed to this unsuitability of direct instrumental injection. First, the matrix ingredients may exert detrimental effect on the performance of the analytical instrument, or they may interfere with the analysis of target analytes; second, the concentration of the target analyte(s) in the sample matrix may be below the detection limit of the analytical instrument. Third, the sample matrix may be incompatible with the analytical instrument. As such, the primary objective of sample preparation is to isolate and concentrate the target analyte(s) from various sample matrices to a new solvent/solvent system and to minimize matrix interference so that the cleaner analyte(s) solution can be introduced into the analytical instrument for separation, identification, and quantification.

Classical sample preparation techniques such as liquid-liquid extraction (LLE) and solid phase extraction (SPE) are still among popular choices for analytical sample preparation[2,3,4]. However, these procedures are time consuming, laborious, multi-step and generally utilize large volume of toxic and hazardous organic solvents, and often involve lengthy and error-prone post-extraction steps such as solvent evaporation and sample reconstitution in a suitable solvent. In order to mitigate some of these problems, solid-phase microextraction (SPME) was introduced by

Pawliszyn and co-workers in 1987[5] as a solvent-free/solvent-minimized microextraction technique [1]. Due to the substantial advantages over conventional sample preparation techniques, SPME has gained enormous popularity within a very short period of time. The broad spectrum applications of SPME have been extensively reviewed in a number of recent articles [6,7,8].

However, some major shortcomings of SPME are yet to be addressed. Among others, one major shortcoming of SPME (fiber format) is the miniscule amount (typically  $\sim 0.5 \mu\text{L}$ ) of sorbent loading which often results in poor extraction sensitivity[9]. The low extraction sensitivity of fiber-SPME prompted the invention of a number of microextraction techniques with higher sorbent loading including in-tube SPME[10], SBSE[11], MEPS[12], rotating-disk sorptive extraction (RDSE)[13], and thin film microextraction (TFME)[14].

SPME and its different formats, modifications and implementations are generally governed by two principle criteria: (1) thermodynamics; and (2) kinetics[15]. Thermodynamic properties determine the maximum amount of analytes that can be extracted by a given mass of sorbent under a specific set of extraction conditions. Since higher sorbent loading allows accumulation of larger amount of target analytes by the sorbent when adequate time is allowed to reach the extraction equilibrium, sorbent loading is directly related to extraction efficiency. On the other hand, kinetics controls the rate of extraction and hence the time required to reach the extraction equilibrium. The faster the extraction equilibrium, the higher is the throughput in the analytical lab. As a result, there is a pressing demand for developing new microextraction techniques that can simultaneously satisfy the required sensitivity (by increasing sorbent loading) and reduce the sample preparation time to its lowest level (by minimizing the extraction equilibrium time).

A critical evaluation of different microextraction systems revealed that the shortcomings of all contemporary microextraction systems originate from: (1) coating technology used for

immobilizing the sorbent on the substrate surface[16] and, (2) the physical format of the extraction system<sup>14</sup> that determines the primary contact surface area (PCSA) of the device and consequently the extraction kinetics. PCSA is defined as the surface area of the extraction medium that can be accessed directly by the sample matrix containing the analytes during the extraction process. Therefore, if a sample preparation technique is to be highly sensitive as well as fast, both the coating technology and the PCSA have to be augmented.

One major challenging area of microextraction devices is the sorbent coating technology that often use a dilute solution of pristine polymer to form a thin surface film on the substrate followed by a free radical cross-linking reaction to immobilize the film[17,18]. The weak physical adhesion of the polymer to the substrate results in a number of the unwanted phenomenon such as high bleeding, washing away of the polymer with organic solvent, long extraction equilibrium time, limited selectivity, poor extraction reproducibility, and swelling of the sorbent when exposed to organic solvents. The lack of chemical bonding between the polymeric sorbent and the substrate is believed to be the primary cause of these coating-related problems. A number of alternative coating techniques have also been proposed including physical deposition[19,20] electrochemical deposition of conducting polymers[21,22], gluing with adhesives[23] and sol-gel column technology[16,1]. Nonetheless, sol-gel column technology pioneered by Malik and co-workers[16,1] have been proven to be the most convenient and versatile[1]. In addition to the suitability of the coating process, sol-gel technology opens up the possibility of making multi-component materials that can be conveniently used to customize the surface morphology, selectivity, and affinity of the sorbent towards the target analytes. The sorbent coating created by sol-gel technology is highly porous and chemically bonded to the substrate. As an outcome, such coatings demonstrate remarkable thermal, solvent, and chemical stability. Due to its inherent

porosity, a thin film of sol-gel coating can extend equivalent or higher sensitivity than commercially available, thick SPME coatings. The high porosity of the sol-gel coating also makes it possible to reach extraction equilibrium in a fraction of the time that is often required by commercial SPME fibers.

Although tremendous efforts have been made to increase the sensitivity of the microextraction systems by merely increasing the sorbent loading on the same substrate (fused silica fiber/glass tube), little work has been done to increase the primary contact surface area (PCSA) of the extraction device. The increase in PCSA of the extraction device not only allows higher sorbent loading without increasing the coating thickness, but may also considerably reduce the extraction equilibrium time. TFME, SBSE, RDSE etc. were developed to increase the PCSA, but the use of conventional sorbent immobilization approach did not offer much benefit in boosting the sensitivity of these systems.

In addition to improving the coating technology and enhancing the PCSA of the microextraction device, some other important factors which may potentially improve the quality of sample preparation to a new height need further consideration: (1) the ability to preconcentrate target analytes directly from the unmodified samples without any clean-up exercises; (2) resistance to harsh chemical environments (i.e., highly acidic and basic) so that matrix pH can be adjusted to wider pH values; (3) the ability to use any organic solvent to elute the extracted analytes so that the final solution can be injected simultaneously into gas chromatograph (GC), high performance liquid chromatograph (HPLC), and/or capillary electrophoresis (CE) to obtain complementary information depending on the analytical need; (4) equal effectiveness in field sampling and sample preparation to eliminate the burden of sample collection, transportation, storage, and sample preparation in the laboratory; (5) ability to achieve a high preconcentration factor during the

extraction so that solvent evaporation and sample reconstitution may be avoided; and (6) ability to reach extraction equilibrium fast enough so that field sampling and sample preparation do not become an inconvenient task.

Taking all of these challenges into consideration, a new green sample preparation approach, fabric phase sorptive extraction (FPSE) has been developed[24, 25], which creatively addresses majority of the problems often encountered in contemporary sample preparation practices. In addition to the advanced material properties of sol-gel derived hybrid organic-inorganic sorbents, FPSE has successfully utilized flexibility, permeability, and the rich surface chemistry of natural/synthetic fabric substrates, resulting in a microextraction sorbent chemically bonded to the substrate with a very high, readily accessible active extraction surface for fast and high efficiency analyte(s) extraction. FPSE has introduced major advantages in solvent-less/solvent-minimized sample preparation techniques including an extraordinarily high primary contact surface area (PCSA), and the ability to directly preconcentrate the target analyte(s) even from excessively complicated sample matrices containing debris, cells, proteins, particulates etc.

Although FPSE has emerged as a major analytical sample preparation technique[26-45], the theory and principle of this simple, innovative and environment friendly technique is yet to be fully studied and understood. As such, the primary objective of the current project is to thoroughly study the theory and principle of fabric phase sorptive extraction. In order to investigate different factors involved in fabric phase sorptive extraction, a polar sorbent sol-gel poly (ethylene glycol) (sol-gel PEG) coated on a hydrophilic cellulose substrate was used as the extraction device and a number of substituted phenols were used as the representative environmental pollutants. Substituted phenols, a class of important industrial raw materials, are known as highly toxic environmental pollutants. They are frequently found in the wastewater generated by wood

processing and pharmaceutical industries, organic synthesis, and oil refineries[46]. Substituted phenols have severe health implications for human kidneys, heart, lungs and the central nervous system[47,48]. As a result, a rapid and efficient sample preparation strategy is warranted to monitor these pollutants.

## **2. Materials and methods**

### **2.1 Chemicals and materials**

All chemicals used in the study were of analytical grade or superior. 4-chlorophenol, 3,5-dimethylphenol, 2,6-dichlorophenol, 2,4,6-trichlorophenol, 2,4-diisopropyl phenol, acetone, dichloromethane, methyltrimethoxysilane (MTMS), and trifluoroacetic acid (TFA) were purchased from Sigma-Aldrich (St. Louis, MO). Sodium hydroxide and hydrochloric acid were purchased from Thermo Fisher Scientific (Milwaukee, WI). Polyethylene glycol was purchased from Alfa Aesar (Ward Hill, MA). Fabric phase sorptive extraction vials (20 mL) and HPLC sample vials (2 mL) were purchased from Supelco (St. Louis, MO). HPLC grade methanol and water were purchased from Fisher Scientific (Pittsburg, PA). Unbleached Muslin 100% cotton cellulose fabrics were purchased from Jo-Ann Fabric (Miami, FL).

### **2.2 Instrumentation**

An Agilent 1100 series HPLC-UV system (Agilent Technologies, USA) equipped with G1311A quaternary pump, G1313A ALS auto sampler, tray holder, G1322A vacuum degasser, G1316A thermostated column compartment, G1314A variable wavelength detector was used for the separation, identification and quantification of substituted phenol compounds. The separation of substituted phenols was performed on a reversed phase Zorbax Extend-C18 HPLC column (5  $\mu$ m, 150 mm, 4.6 mm; Agilent Technologies, USA). Centrifugation of different solutions to obtain

particle free solutions was carried out in an Eppendorf Centrifuge Model 5415 R (Eppendorf North America Inc. USA). A Fisher Scientific Digital Vortex Mixer (Fisher Scientific, USA) was employed to thoroughly mixing different solutions. On-line data collection and processing of chromatographic data was done using ChemStation software (Revision A.08.03) for Windows (Agilent Technologies, USA). A Philips XL30 scanning electron microscope equipped with an EDAX detector was used to obtain SEM images presented in the article. A Parkin Elmer Spectrum 100 FT-IR Spectrometer equipped with Universal ATR Sampling Accessory (Santa Clara, CA) was used to perform FT-IR characterization of the substrates and FPSE media coated with sol-gel sorbents. A Barnstead NANOPure Diamond (model D11911) deionized water system (Dubuque, IA) was employed to obtain high purity deionized water (18.2 MΩ) used in sol-gel synthesis and aqueous sample preparation for fabric phase sorptive extraction.

### ***2.3 Surface cleaning and activation of fabric substrates***

A 100 cm<sup>2</sup> segment of the cellulose fabric was cleaned with a copious amount of deionized water, followed by soaking in 1 M NaOH solution for 1 h under continuous sonication. The base-treated fabrics were then washed several times with deionized water, followed by treating with 0.1 M HCl solution for 1 h under sonication. The treated fabric was then washed with copious amount of deionized water and finally dried in an inert atmosphere overnight. The dried fabric was stored in clean airtight glass container until they are coated with sorbents.

### ***2.4 Preparation of the sol solutions for coating on the substrate surface and the matrix***

The sol solutions for creating the sol-gel PEG coatings were prepared using a modified version of a previously described formulation [25, 49]. Briefly, the sol solution for sol-gel PEG coating was prepared by dissolving 10 g of poly(ethylene glycol) polymer, 10 mL methyltrimethoxysilane



sol-gel precursor (MTMS), 20 mL methylene chloride as the organic solvent, 4 mL trifluoroacetic acid (5% water) as the sol-gel catalyst. The mixture was then vortexed for 3 min, centrifuged for 5 min and finally the clear supernatant of the sol solution was transferred to a clean 3 oz. amber colored glass reaction bottle.

### ***2.5 Creation of sol-gel PEG coatings on the substrate surface***

For both sol-gel PEG coatings, cellulose fabric was used as the substrate. The clean and treated fabrics were gently inserted into the reaction bottle containing the sol solution so that a three-dimensional network of sol-gel PEG could be formed on the surface of the substrate as well as throughout the porous matrix. The fabrics were kept inside the sol solution for a pre-determined period. Upon completion of the coating period, the sol solution was expelled from the reaction bottle and the coated fabrics were dried and aged in a home-made conditioning device built inside a gas chromatography oven with continuous helium gas flow at 50 °C for 24 h. Before using for extraction, the sol-gel PEG coated fabrics were rinsed sequentially with methylene chloride and methanol followed by drying at 50 °C under an inert atmosphere for 1 h. The fabric phase sorptive extraction media coated with sol-gel PEG were then cut into 2.5 cm x 2.0 cm pieces (area of each side, 5 cm<sup>2</sup>) and stored in a closed glass container to prevent contamination.

### ***2.6 Preparation of standard solutions for fabric phase sorptive extraction***

All primary stock solutions (substituted phenols) were prepared by dissolving 100 mg of each analyte in 10 mL methanol in a 22 mL amber glass vial to obtain a solution concentration of 10 mg/mL. The intermediate stock solution was prepared by diluting the primary stock solution to 1.0 mg/mL in methanol. All working solutions were prepared by diluting intermediate stock solutions in deionized water to reach the desired concentrations.

### **2.7 *Fabric phase sorptive extraction procedure***

A 5 cm<sup>2</sup> piece (2.5 cm x 2.0 cm) of sol-gel PEG coated FPSE device was immersed in 1 mL methanol: acetonitrile (50:50, v/v) for 5 min to ensure cleanliness. The device was air dried to remove the residual organic solvent. The clean FPSE device was then immersed into the sampling vial (10 mL) containing the sample impregnated with the analytes of interest. A small Teflon coated magnet was placed into the vial. Finally, the vial was placed on top of a magnetic stirrer to promote diffusion of the analytes throughout sample for a predetermined period of time. After that, the FPSE device was removed from the sampling vial and was shaken off or dried with a Kim wipe. This is particularly important if the prepared sample is to be analyzed in gas chromatography.

### **2.8 *Back-extraction/Solvent desorption***

The analytes extracted on the FPSE device were back-extracted into a suitable solvent system. 500 µL of the solvent system was transferred into a 10 mL glass vial. The dry FPSE device containing the extracted analytes was immersed into the solvent mixture. The back-extraction was carried out by simply keeping the FPSE device immersed into solvent system for a predetermined period and no external diffusion mechanism (stirring/sonication) was imposed. The back-extraction solution containing the extracted analytes was then transferred into an Eppendorf tube for centrifugation to compel any remaining particulates to precipitate. Finally, the particle free preconcentrated solution of analytes was transferred into a HPLC sample vial for chromatographic analysis. In order to reuse the FPSE medium in future, it was cleaned with 1 mL methanol: acetonitrile (50:50, v/v) for 5 min, dried on a watch-glass for 5 min and then stored in a clean glass container.

## **3. Results and discussion**

### 3.1 Theoretical considerations

The principle of fabric phase sorptive extraction, similar to SPME and related equilibrium-driven sorptive microextraction techniques[50,14,51] is based on the interactions between the analyte(s) and the extraction sorbent. Under equilibrium extraction conditions, the amount of analyte extracted by FPSE medium is proportional to the partition coefficient between the extraction phase and the sample matrix ( $K_{es}$ ), volume of the extracting phase ( $V_e$ ), and the original concentration of the analyte ( $C_0$ ) as expressed in Equation 1:

$$n = \frac{K_{es}V_eV_sC_0}{K_{es}V_e + V_s} \quad \text{Equation 1}$$

When the sample volume is large compared to the volume of the extraction sorbent,  $K_{es}V_e \ll V_s$ , Equation 1 can be simplified to:

$$n = K_{es}V_eC_0 \quad \text{Equation 2}$$

As Equation 2 suggests, the amount of the extracted analyte is directly proportional to the volume of the extraction sorbent and hence can be increased by expanding the volume of the extraction sorbent if the analyte concentration is kept constant.

However, according to the kinetic theory of extraction, expanding the volume of extraction sorbent by increasing the coating thickness of sorbent may result in long extraction equilibrium time as expressed in Equation 3. When the extraction sorbent is dispersed as a thin film on the substrate, the diffusion of analytes through the boundary layer controls the extraction kinetic (rate of extraction). As such, the time required to extract 95% of the equilibrium extraction amount of the analytes,  $t_{e,95\%}$  can be calculated as:

$$t_{e,95\%} = \frac{B\delta bK_{es}}{D_s} \quad \text{Equation 3}$$

Where  $b$  is the extraction sorbent thickness,  $\delta$  is the boundary layer thickness,  $K_{es}$  is the distribution constant of analyte between the extraction sorbent and the sample matrix,  $D_s$  is the diffusion coefficient of the analyte in the sample matrix, and  $B$  is a geometric factor referring to the geometry on which the extraction sorbent is coated.

As is evident from Equation 3, the equilibrium extraction time can be reduced by reducing the coating thickness ( $b$ ), by increasing primary contact surface area of the extraction medium (smaller  $B$  value), or by increasing the analyte diffusion in the sample matrix by applying external stimuli e.g., stirring, sonication, shaking etc.

Also, the rate of extraction in sorptive microextraction is not linear. The extraction rate is very fast in the beginning of the extraction process and slows down as the extraction progresses towards the equilibrium. The initial rate  $\left(\frac{dn}{dt}\right)$  of extraction is proportional to the surface area of the extraction phase as shown in Equation 4:

$$\frac{dn}{dt} = \left(D_s A / \delta\right) C_0 \quad \text{Equation 4}$$

Therefore, it is obvious that in order to increase the sensitivity of the microextraction system, the loading of the sorbent has to be increased. On the other hand, to reduce the extraction equilibrium time, surface area of the extraction device has to be increased.

### 3.2 Significance of porous substrates for microextraction sorbent

The permeability of the microextraction substrate plays a pivotal role in the mass transfer rate from the sample matrix to the microextraction sorbent. A plausible model explaining the events that occur during the extraction process for both impermeable and permeable substrate is presented in Fig. 1.

Under the influence of external stimuli (stirring, sonication, etc.), a continuous flow of the sample moves toward the substrate holding the microextraction sorbent for interaction. When an impermeable substrate such as fused silica fiber is used, the flow bounces back and collides with the incoming flow, redirecting some of the incoming flow away from the substrate surface. As a consequence, only a fraction of target analytes interact with the sorbent. On the contrary, when the substrate is permeable, a majority of the incoming flow of the sample penetrates the surface without being redirected. As a result, the mass transfer between the sorbent and sample occurs rapidly, within a fraction of the time required for similar interactions with impermeable substrates. This is consistent with the experimental result obtained by Alcudia-León[52]. She compared the extraction behavior of stir bars coated with impermeable PTFE of varying surface areas to a porous PTFE stir-membrane unit. The highest extraction sensitivity was obtained by the porous stir-membrane among all the test devices even though it had a low surface area relative to the impermeable units. This observation was a clear manifestation of the potential role of porous substrates as hosts for microextraction sorbents.

### ***3.3 Surface Chemistry of Cellulose Substrate***

Cellulose is a hydrophilic linear polymer of  $\beta$ -D-glucopyranose, whose structure is shown in Figure 2. Each dimer of cellulose contains three hydroxyl functional groups in positions 2, 3, and 6 which can participate in polycondensation during the sol-gel coating process at a varying degree of reactivity[53]. As such, cellulose seems to be an excellent candidate as a potential substrate for sol-gel sorbent coating.

The cellulose fabric used in this experiment was activated by treating it with 1 M NaOH solution for an hour under sonication. Swelling of cellulose, also known as mercerization, is an

important treatment that improves its chemical reactivity and significantly increases the availability of all the hydroxyl groups for chemical reactions[54].

### ***3.4 Sol-gel coating process on fabric phase sorptive extraction media***

Sol-gel process in creating the sorbent coatings on cellulose substrate involves the following reactions:

- (i) Catalytic hydrolysis of sol-gel precursor
- (ii) Polycondensation of hydrolyzed precursors, leading to a growing sol-gel network
- (iii) Random incorporation of sol-gel active organic polymer into the growing sol-gel network
- (iv) Immobilization of the growing sol-gel network on the substrate surface via polycondensation

Under the appropriate experimental conditions, sol-gel precursor MTMS undergoes hydrolysis in the presence of sol-gel catalyst, trifluoroacetic acid (TFA). The hydrolyzed MTMS molecules then participate in polycondensation to create a sol-gel network. Sol-gel active organic polymer, poly(ethylene glycol) present in the respective sol solution enters randomly into the growing sol-gel network during this step. Polycondensation of the sol-gel network with the available hydroxyl functional groups of cellulose results in a thin, chemically bonded layer of sorbent wrapped on cellulose microfibrils.

A tentative reaction scheme of the sol-gel process is given in Fig. 3. Fig. 4 demonstrates the schematic representation of sol-gel PEG coated FPSE media.

The sol-gel coating process results in a highly porous and uniformly distributed ultra-thin three-dimensional network of hybrid inorganic-organic sorbent chemically bonded to the substrate. As the coating occurs on individual cellulose microfibrils, the sorbent loading is relatively high with low coating thickness.

### 3.5 FTIR Characterization of FPSE media

Fig. 5 shows FT-IR spectra of uncoated cellulose, MTMS, poly(tetrahydrofuran furan), poly(ethylene glycol), and sol-gel PEG coated FPSE media. As can be seen from the FT-IR spectra, MTMS[55] demonstrates characteristic Si-O-C-H band at  $2944\text{ cm}^{-1}$ . Uncoated cellulose demonstrated characteristics peaks at  $3332\text{ cm}^{-1}$  and  $2900\text{ cm}^{-1}$ ,  $1315\text{ cm}^{-1}$ , and at  $1030\text{ cm}^{-1}$  corresponding to O-H, C-H and C-O stretching and C-H bending vibration, respectively. In the fingerprint region between  $1428\text{ cm}^{-1}$  and  $850\text{ cm}^{-1}$ , the characteristic peaks were recorded at  $1105\text{ cm}^{-1}$  (C-O-C) bridges, glycoside bonds;  $1029\text{ cm}^{-1}$  C-OH primary alcohols,  $1052\text{ cm}^{-1}$  C-OH secondary alcohols,  $1000\text{ cm}^{-1}$ ,  $983\text{ cm}^{-1}$  –CH- bonds[56]. The characteristic peak of poly(ethylene glycol) include  $2866\text{ cm}^{-1}$ ,  $1349\text{ cm}^{-1}$  which represent different vibration modes of C-H bonds. The peak at  $1294\text{ cm}^{-1}$  and  $1248\text{ cm}^{-1}$  belong to C-C double bond[57]. For sol-gel PEG coated FPSE devices, no additional signals of deposited sol-gel network were clearly visible due to the overlapping with characteristic absorption bands of uncoated fabrics. However, the sol-gel coated FPSE media demonstrated a decrease in the absorption bands, which is considered to be clear manifestation of the presence of the coating on the substrate[58].

### 3.6 Sorbent loading and coating reproducibility

Reproducibility of the sol-gel coating process is an important factor that potentially causes significant impact on the overall error profile of FPSE process. In order to verify the reproducibility of sol-gel coating as well as to determine sorbent loading per square centimeter of FPSE media, 4 conditioned fabrics were coated under identical reaction conditions. The fabrics (with known area) were weighed before and after the sol-gel coating followed by cleaning and drying to determine the amount of sol-gel sorbent immobilized on the surface. FPSE media were found to host high

mass of sol-gel sorbent. Average mass of sol-gel PEG sorbent on FPSE media were calculated as 8.63 mg/cm<sup>2</sup> (~43.2 mg/ 5 cm<sup>2</sup> FPSE unit).

### **3.7 Scanning electron microscopy of FPSE media**

Figure 6 represents scanning electron micrographs (SEM) of uncoated, surface activated, and sol-gel coated FPSE media. As is evident from these micrographs, cellulose substrate is made up of microfibrils within the individual thread that are weaved to form the fabric. In addition to the inherent pores, capillaries, voids, and interstices, cellulose fibers are woven to contain well defined pores which are dependent upon their end usage. Low viscosity sol solution can easily permeate through the microfibrils and pores to create a uniform ultra-thin layer of sorbent coating on the surface. As such, sol-gel coating on FPSE media is not limited to only its outer surface. Instead, the coating is bonded throughout the three dimensional matrix of the substrate, resulting in a comparatively larger extraction surface with enhanced sorption capacity for the target analytes.

### **3.8 Analyte Sorption Capacity Study**

As seen in Section 3.6, FPSE media contained high volume of sorbents. This high sorbent loading should be translated into high sample capacity. In order to establish the maximum amount of analytes FPSE media can retain, the FPSE media were exposed to a series of increasingly higher concentration of analytes. An aliquot of each solution was injected before and after the extraction. Extraction of phenols up to 80 ppm without competing against each other. As such, a 5 cm<sup>2</sup> unit of sol-gel PEG coated FPSE media was able to retain approximately 2000 µg of phenols (combined), which is about 10% of the sorbent loading. This high sample capacity may open up a new application of FPSE media as a scavenger of environmental pollutants.

### **3.9 Operational stability of sol-gel coated FPSE media**



Exposing FPSE media to different organic solvents for solvent mediated desorption is an integral part of the FPSE process if analytes are to be transferred to a suitable organic solvent for subsequent analysis. Unlike commercially available SPME fibers, due to the strong chemical bonding between the sorbent and the substrate of FPSE media, they can be exposed to any organic solvent. To verify that, a set of 3 FPSE media were used to extract phenols before and after exposing to acetone, methylene chloride, and acetone: methylene chloride (50:50 v/v) (for 8 hrs. at room temperature). No significant changes were observed between the extraction sensitivity before and after the treatments. Adjusting the pH of the sample matrix to maximize the ionizable analytes is a common practice routinely used by analytical chemists. The chemical stability of FPSE media were evaluated for both acidic (pH 1) and basic (pH 12) environment. Extractions were performed in triplicate before and after an 8 h exposure to an acidic or basic environment. Extraction sensitivity was similar for all fabrics before and after the acid/base treatment. Although both silica based sorbent and cellulose substrate are vulnerable to highly acidic/basic environments, our experiment suggests that short exposure of FPSE media to highly acidic and basic environment does not have an impact on their performances. Thus, FPSE media coated with sol-gel PEG sorbents have demonstrated remarkable operational stability.

### ***3.10 Optimization of fabric phase sorptive extraction (FPSE) conditions***

In order to maximize the extraction efficiency of FPSE as a novel, new generation microextraction technique, a number of factors that can impact extraction performance were evaluated including sample volume, extraction time, stirring speed, back-extraction solvent type and volume, and ionic strength.

#### ***3.10.1 Sample volume***

Although FPSE follows the general principle of sorption-based microextraction techniques, the high sorbent loading and extended primary contact surface area (10 cm<sup>2</sup> for a typical 5 cm<sup>2</sup> FPSE unit) have made this system different from other microextraction techniques. Therefore, it is important to study the impact of sample volume on the extraction behavior. The amount of analyte extracted in any microextraction system is expected to increase with the increase in the sample volume up to a certain point, at which no further increase is expected. This optimum sample volume was determined by extracting substituted phenols at 5 ng/mL concentration from 10 mL, 15 mL, and 20 mL aqueous solutions for 40 min. The extraction results revealed that there is no statistically significant difference ( $p \geq 0.05$ ) in the extraction of 3,5-dimethyl phenol, 2,4,6-trichlorophenol, and 2,4-diisopropyl phenol between 10 mL, 15 mL, and 20 mL. However, a slight change (statistically significant, but practically insignificant) was observed for 4-chlorophenol and 2,6-dichlorophenol with different volumes. Higher volumes were seen to provide better extraction reproducibility. Based on these results, a 10 mL sample volume was used in all the subsequent experiments, although a 20 mL sample volume may be more optimal for ultra-trace analyses.

### **3.10.2 Extraction time**

Extraction time is one of the most important factors that influence extraction efficiency. In this work, the effect of extraction time on substituted phenols were investigated in over the span of 10-40 min. Experimental data (Fig. 8) demonstrate that the extraction equilibrium for all five phenols was reached in 40 min.

### **3.10.3 Stirring speed**

Diffusion of the analytes through the sample matrix increases mass transfer rate to the extraction phase, reduces the time required for reaching extraction equilibrium, and augments the extraction kinetics[59,60]. Diffusion of the analytes can be increased in a number of ways

including sonication, heating the sample matrix, and stirring[61,62]. In the current study, different stirring speeds (0-1100 rpm) were studied to determine the impact of stirring on extraction sensitivity. Extraction sensitivity of all 5 analytes was increased with higher stirring speed. Based on the results obtained, a stirring speed of 1100 rpm was selected as optimum.

#### ***3.10.4 Effect of salt content***

Adding salt to the sample matrix generally decreases the solubility of organic analytes in water and thus results in higher extraction efficiency. On the other hand, the presence of salt in the sample matrix increases the viscosity of the solution and consequently reduces the rate of diffusion of the analytes. Since both factors counter-balance each other, experimental determination of the impact of salt addition is recommended[62]. The influence of salt was studied by adding different amounts of sodium chloride ranging from 0-20% (w/v) to the sample. Addition of salt in substituted phenols solution generally increased sensitivity up to 15% NaCl (w/v) (Fig. 9). Therefore, NaCl concentration at 15% (w/v) is considered optimum for extracting substituted phenols from aqueous solutions.

#### ***3.10.5 Optimization of elution solvent, volume of solvent and elution time***

Due to the polarity differences among all the substituted phenols ( $\log K_{ow}$  2.4-3.8), all back-extraction solvents may not be equally effective for quantitative solvent mediated desorption. Considering the high to medium polarity of the substituted phenols, 500  $\mu$ L of methanol (MeOH) (relative polarity 0.762), acetonitrile (ACN) (relative polarity 0.46) or methanol-acetonitrile mixture (MeOH: ACN) (50:50 v/v) were used for elution/back-extraction of substituted phenols from FPSE media. MeOH was found better than MeOH: ACN mixture and ACN for back-extraction of 4-chlorophenol, while MeOH: ACN mixture performed better than MeOH or ACN for back-extraction of 2,6-dichlorophenol. The trend changes with the polarity of the analyte

relative to the back-extraction solvents. The back-extraction of high polarity compound 4-chlorophenol ( $\log K_{ow}$  2.4) was favored by highest polarity solvent MeOH. 2,6-dichlorophenol ( $\log K_{ow}$  2.7), being relatively less polar, was better extracted by MeOH: ACN. However, other substituted phenols did not show preference for any specific solvents. Because the MeOH:ACN mixture provided better reproducibility in solvent back-extraction, it was considered optimum and was used as the back-extraction solvent in all subsequent experiments.

Due to the ultra-thin coating of sol-gel sorbent as well as well-preserved pores in the fabric substrate, it was expected that low viscosity organic solvent would easily penetrate the sorbent to quantitatively desorb the extracted analytes back very fast. Two desorption times, 5 min and 10 min were investigated with the MeOH: ACN (50:50 v/v) mixture. No discernible difference in extraction sensitivity was observed between 5 min and 10 min desorption, therefore a 5 min back extraction was accepted as the optimum desorption time.

Our experiments showed that 500  $\mu$ L of the ACN:MeOH mixture is the minimum volume needed for complete immersion of the 5 cm<sup>2</sup> FPSE unit and quantitative desorption of analytes without any carry over problem. The ultra-thin coating of highly porous sol-gel sorbent is easily accessible to organic solvent without any external stimuli (e.g., stirring, sonication), resulting in complete desorption within a very short period of time. A low volume of back-extraction solvent maintains the preconcentration achieved from the extraction, and therefore, reduces the time required for typically laborious and time consuming solvent elution and sample reconstitution steps.

### ***3.11 Model correlating octanol-water coefficient and absolute recovery***

Mathematical model was created for sol-gel PEG coated FPSE media that can be used as a predictive tool to estimate approximate absolute recovery of a given compound on the specific

FPSE media using its octanol-water coefficient value. In order to develop this model, a series of substituted phenol solutions (10 ppm, 20 ppm, 40 ppm, 60 ppm, and 80 ppm) were prepared in DI water. For each compound, a calibration curve was developed using concentration and corresponding chromatographic peak area. All samples were analyzed in HPLC-UV before and after the fabric phase sorptive extraction in triplicate. The single and average absolute recovery of individual compounds across the concentration range was calculated. The average for an individual compound was plotted against its  $\log K_{ow}$  value. Fig. 10 shows that substituted phenols demonstrates excellent linear relationship between average absolute recovery and logarithm of octanol-water coefficient. This graphs can be used as a predictive tool to estimate absolute recovery of a compound using its  $\log K_{ow}$  value and may assist in selecting the appropriate FPSE media suitable for a particular analytical problem.

(1) Model for sol-gel PEG: Absolute percentage recovery=  $-77.61822 + 44.931167 \cdot \log K_{ow}$

### 3.12 Analytical performance

The analytical parameters including linear range, correlation coefficient ( $r^2$ ), intra-day and inter-day repeatability, and limit of detection of substituted phenols were investigated under the optimized extraction conditions and are presented in Table 1 [sample volume 10 mL, stirring speed 1100 rpm, salt content 15%, extraction time 40 min, desorption time 5 min, and desorption solvent MeOH: ACN (50/50)].

As can be seen in Table 1, the FPSE-HPLC-UV method demonstrates wide linear range for all the tested analytes with correlation coefficients of  $r^2 > 0.99$ . The repeatability (%RSD) of substituted phenols at 50 ppb level concentration within a day were between 1.3 and 5.1, whereas, the between days repeatability were found to be between 0.5-26.0. As such, the method can be conveniently used in routine environmental monitoring laboratories.

### ***3.13 Analysis of prepared sample using multiple analytical systems***

As different chromatographic systems have different advantages, e.g., GC favors the analysis of low molecular weight compounds, whereas the HPLC is suitable for medium to high molecular weight compounds. In some cases, the whole ranges of analytes are of interest. Samples are prepared differently for both the system which inflicts additional burden to the analyst. FPSE has ingeniously solved this problem. Selection of a solvent equally compatible to both the GC and HPLC as the FPSE back-extraction solution and injection of the eluent simultaneously into the GC and HPLC may offer complimentary information that cannot be obtained from either of the systems alone.

Fig.11. presents GC and HPLC chromatograms obtained from analyzing the same sample prepared by FPSE.

### ***3.14 Method comparison***

A literature review of selected methods used for the determination of substituted phenols is presented in Table 2. As evident from the Table, the new FPSE method has unequivocally demonstrated superior extraction sensitivity, higher pre-concentration factor, precision and simplicity. Considering only a fraction of the eluent was injected for analysis, the sensitivity of FPSE method can be easily increased even further by evaporating 500  $\mu$ L sample solution to dryness and reconstituting the sample in a smaller volume of organic solvent or by increasing injection volume.

### ***3.15 Applications of the FPSE-HPLC-UV methods for environmental sample analysis***

The optimized FPSE-HPLC-UV methods for substituted phenols were applied for the determination of these compounds in tap water, pond water and reclaimed water released from a sewerage treatment plant. The pond water and reclaimed water samples were visibly cloudy with

high content of suspended soil particles and biomass. However, no filtration or other clean-up procedure was applied to these samples prior to FPSE procedure. Extraction recoveries of sol-gel PEG coated FPSE media were calculated by comparing the extraction efficiency obtained by extracting spiked environmental blank samples with 50 µg/L of substituted phenols compounds to that of the deionized water at the same concentration. The relative percentage recovery data of substituted phenols are shown in Table 3.

The percentage recovery of substituted phenols in tap water, pond water, and reclaimed water were in the range of 19.7-91.0, 21.9-109.5, and 40.7-106.8, respectively. The probable cause of the low recovery of substituted phenols in environmental water may be attributed to the formation of complexes with numerous treatment chemicals and/or particulates. A holistic investigation is needed to understand the real cause behind the low recovery of substituted phenols from environmental water samples.

#### **4. Conclusions**

The theory and working principle of FPSE that candidly explains the uniquely superior performance of the new and emerging microextraction system have been presented. In a very short period of time, FPSE has found applications in wide variety of sample matrices and areas such as pharmaceuticals, environmental, food, biological, toxicological, metabolomics, packaging, metal speciation to name a few. In all these applications, FPSE has established itself as an efficient, green, new generation sample preparation technique. Unique integration of the sol-gel coating technology into highly porous fabric substrate resulted in an efficient sample preparation device capable of extracting target analytes from complex environmental samples with high efficiency. Strong chemical bonding between the sol-gel extraction sorbents and the host substrates provide excellent solvent and chemical stability to FPSE device. As a result, utilization of a back-extraction

solvent equally compatible with both gas chromatography and liquid chromatography opens up the possibility of analyzing the same preconcentrated sample simultaneously in GC and LC to obtain complimentary information, if necessary. High chemical stability of FPSE media extends the ability of matrix pH adjustment between pH 1 to pH 12 which is often important to efficiently extract ionizable compounds (organic acids/bases) from aqueous solution. High sorbent loading in FPSE media provided very high sample capacity. The inherently porous structure of the sol-gel sorbent and the permeability of fabric have significantly reduced the equilibrium extraction time from hours to minutes, making FPSE an excellent field-deployable sample preparation technique.

Parts per trillion level detection sensitivities were achieved for substituted phenols. Eliminating the necessity of sample clean-up prior to the extraction, FPSE presents a new possibility in analyzing complex samples such as environmental water, biological fluids, foods, and pharmaceuticals with high matrix interference, leading to high quality analytical data that truly represents the sample of interest.

### Acknowledgements

The authors would like to thank Dr. Tatiana Trejos, Trace Evidence Analysis Facility and Mr. Thomas Beasley, Florida Center for Analytical Electron Microscopy at Florida International University for their help in obtaining SEM images. Linda Maiben's help as an undergraduate research assistant is also highly appreciated.

### References

1. Kabir, A.; Furton, K. G.; Malik, A., Innovations in sol-gel microextraction phases for solvent-free sample preparation in analytical chemistry. *TrAC Trends in Analytical Chemistry* **2013**, 45 (0), 197-218.
2. Wang, H.; Yan, H.; Qiu, M.; Qiao, J.; Yang, G., Determination of dicofol in aquatic products using molecularly imprinted solid-phase extraction coupled with GC-ECD detection. *Talanta* **2011**, 85 (4), 2100-2105.
3. Varga, R.; Somogyvári, I.; Eke, Z.; Torkos, K., Determination of antihypertensive and anti-ulcer agents from surface water with solid-phase extraction–liquid chromatography–electrospray ionization tandem mass spectrometry. *Talanta* **2011**, 83 (5), 1447-1454.



4. Ribeiro, C.; Tiritan, M. E.; Rocha, E.; Rocha, M. J., Development and Validation of a HPLC-DAD Method for Determination of Several Endocrine Disrupting Compounds in Estuarine Water. *Journal of Liquid Chromatography & Related Technologies* **2007**, *30* (18), 2729-2746.
5. Pawliszyn, J.; Liu, S., Sample introduction for capillary gas chromatography with laser desorption and optical fibers. *Analytical Chemistry* **1987**, *59* (10), 1475-1478.
6. Ribeiro, C.; Ribeiro, A. R.; Maia, A. S.; Goncalves, V. M. F.; Tiritan, M. E., New Trends in Sample Preparation Techniques for Environmental Analysis. *Critical Reviews in Analytical Chemistry* **2014**, *44* (2), 142-185.
7. Spietelun, A.; Marcinkowski, L.; de la Guardia, M.; Namiesnik, J., Recent developments and future trends in solid phase microextraction techniques towards green analytical chemistry. *Journal of Chromatography A* **2013**, *1321*, 1-13.
8. Risticevic, S.; Niri, V. H.; Vuckovic, D.; Pawliszyn, J., Recent developments in solid-phase microextraction. *Analytical and Bioanalytical Chemistry* **2009**, *393* (3), 781-795.
9. Bigham, S.; Medlar, J.; Kabir, A.; Shende, C.; Alli, A.; Malik, A., Sol-gel capillary microextraction. *Analytical Chemistry* **2002**, *74* (4), 752-761.
10. Eisert, R.; Pawliszyn, J., Automated in-tube solid-phase microextraction coupled to high-performance liquid chromatography. *Analytical Chemistry* **1997**, *69* (16), 3140-3147.
11. Baltussen, E.; Sandra, P.; David, F.; Cramers, C., Stir bar sorptive extraction (SBSE), a novel extraction technique for aqueous samples: Theory and principles. *Journal of Microcolumn Separations* **1999**, *11* (10), 737-747.
12. Abdel-Rehim, M., New trend in sample preparation: on-line microextraction in packed syringe for liquid and gas chromatography applications - I. Determination of local anaesthetics in human plasma samples using gas chromatography-mass spectrometry. *Journal of Chromatography B-Analytical Technologies in the Biomedical and Life Sciences* **2004**, *801* (2), 317-321.
13. Richter, P.; Leiva, C.; Choque, C.; Giordano, A.; Sepulveda, B., Rotating-disk sorptive extraction of nonylphenol from water samples. *Journal of Chromatography A* **2009**, *1216* (49), 8598-8602.
14. Bruheim, I.; Liu, X. C.; Pawliszyn, J., Thin-film microextraction. *Analytical Chemistry* **2003**, *75* (4), 1002-1010.
15. Lucena, R., Extraction and stirring integrated techniques: examples and recent advances. *Analytical and Bioanalytical Chemistry* **2012**, *403* (8), 2213-2223.
16. Chong, S. L.; Wang, D. X.; Hayes, J. D.; Wilhite, B. W.; Malik, A., Sol-gel coating technology for the preparation of solid-phase microextraction fibers of enhanced thermal stability. *Analytical Chemistry* **1997**, *69* (19), 3889-3898.
17. Wright, B. W.; Peaden, P. A.; Lee, M. L.; Stark, T. J., FREE-RADICAL CROSS-LINKING IN THE PREPARATION OF NON-EXTRACTABLE STATIONARY PHASES FOR CAPILLARY GAS-CHROMATOGRAPHY. *Journal of Chromatography* **1982**, *248* (1), 17-34.
18. Blomberg, L. G., Current aspects of stationary phase immobilization in open tubular column chromatography. *Journal of Microcolumn Separations* **1990**, *2* (2), 62-68.
19. Graham, C. M.; Meng, Y. J.; Ho, T.; Anderson, J. L., Sorbent coatings for solid-phase microextraction based on mixtures of polymeric ionic liquids. *Journal of Separation Science* **2011**, *34* (3), 340-346.
20. Musteata, F. M.; Walles, M.; Pawliszyn, J., Fast assay of angiotensin 1 from whole blood by cation-exchange restricted-access solid-phase microextraction. *Analytica Chimica Acta* **2005**, *537* (1-2), 231-237.
21. Mohammadi, A.; Yamini, Y.; Alizadeh, N., Dodecylsulfate-doped polypyrrole film prepared by electrochemical fiber coating technique for headspace solid-phase microextraction of polycyclic aromatic hydrocarbons. *Journal of Chromatography A* **2005**, *1063* (1-2), 1-8.

22. Bagheri, H.; Mir, A.; Babanezhad, E., An electropolymerized aniline-based fiber coating for solid phase microextraction of phenols from water. *Analytica Chimica Acta* **2005**, 532 (1), 89-95.
23. Liu, Y.; Shen, Y. F.; Lee, M. L., Porous layer solid phase microextraction using silica banded phases. *Analytical Chemistry* **1997**, 69 (2), 190-195.
24. Kabir, A.; Furton, K. G., Fabric phase sorptive extractors United States Patents and Trademark Office: 2016.
25. Kumar, R.; Gaurav; Heena; Malik, A. K.; Kabir, A.; Furton, K. G., Efficient Analysis of Selected Estrogens Using Fabric Phase Sorptive Extraction and High Performance Liquid Chromatography-Fluorescence Detection. *Journal of Chromatography A* (0).
26. Anthemidis, A.; Kazantzi, V.; Samanidou, V.; Kabir, A.; Furton, K. G., An automated flow injection system for metal determination by flame atomic absorption spectrometry involving on-line fabric disk sorptive extraction technique. *Talanta* **2016**, 156-157, 64-70.
27. Aznar, M.; Alfaro, P.; Nerin, C.; Kabir, A.; Furton, K. G., Fabric phase sorptive extraction: An innovative sample preparation approach applied to the analysis of specific migration from food packaging. *Analytica Chimica Acta* **2016**, 936, 97-107.
28. García-Guerra, R. B.; Montesdeoca-Esponda, S.; Sosa-Ferrera, Z.; Kabir, A.; Furton, K. G.; Santana-Rodríguez, J. J., Rapid monitoring of residual UV-stabilizers in seawater samples from beaches using fabric phase sorptive extraction and UHPLC-MS/MS. *Chemosphere* **2016**, 164, 201-207.
29. Guedes-Alonso, R.; Ciofi, L.; Sosa-Ferrera, Z.; Juan Santana-Rodríguez, J.; del Bubba, M.; Kabir, A.; Furton, K. G., Determination of androgens and progestogens in environmental and biological samples using fabric phase sorptive extraction coupled to ultra-high performance liquid chromatography tandem mass spectrometry. *Journal of Chromatography A* **2016**, 1437, 116-126.
30. Heena; Kaur, R.; Rani, S.; Malik, A. K.; Kabir, A.; Furton, K. G., Determination of cobalt(II), nickel(II) and palladium(II) Ions via fabric phase sorptive extraction in combination with high-performance liquid chromatography-UV detection. *Separation Science and Technology* **2017**, 52 (1), 81-90.
31. Huang, G.; Dong, S.; Zhang, M.; Zhang, H.; Huang, T., Fabric phase sorptive extraction: Two practical sample pretreatment techniques for brominated flame retardants in water. *Water Research* **2016**, 101, 547-554.
32. Kabir, V. F. S. A., Fabric Phase Sorptive Extraction in Pharmaceutical Analysis. *Pharmaceutica Analytica Acta* **2015**, 6 (7), 1-3.
33. Karageorgou, E.; Manousi, N.; Samanidou, V.; Kabir, A.; Furton, K. G., Fabric phase sorptive extraction for the fast isolation of sulfonamides residues from raw milk followed by high performance liquid chromatography with ultraviolet detection. *Food Chemistry* **2016**, 196, 428-436.
34. Kumar, R.; Dhingra, G.; Kabir, A.; Furton, K. G.; Malik, A. K., Development of a fabric-phase sorptive extraction with high-performance liquid chromatography and ultraviolet detection method for the analysis of alkyl phenols in environmental samples. *Journal of Separation Science* **2015**, n/a-n/a.
35. Kumar, R.; Gaurav; Heena; Malik, A. K.; Kabir, A.; Furton, K. G., Efficient analysis of selected estrogens using fabric phase sorptive extraction and high performance liquid chromatography-fluorescence detection. *Journal of Chromatography A* **2014**, 1359 (0), 16-25.
36. Lakade, S. S.; Borrull, F.; Furton, K. G.; Kabir, A.; Fontanals, N.; Maria Marcé, R., Comparative Study of Different Fabric Phase Sorptive Extraction Sorbents to Determine Emerging Contaminants from Environmental Water Using Liquid Chromatography-Tandem Mass Spectrometry. *Talanta* **2015**, TALD1501278.
37. Lakade, S. S.; Borrull, F.; Furton, K. G.; Kabir, A.; Marce, R. M.; Fontanals, N., Dynamic fabric phase sorptive extraction for a group of pharmaceuticals and personal care products from environmental waters. *Journal of Chromatography A* **2015**, 1456, 19-26.

38. Locatelli, M.; Kabir, A.; Innosa, D.; Lopatriello, T.; Furton, K. G., A fabric phase sorptive extraction-High performance liquid chromatography-Photo diode array detection method for the determination of twelve azole antimicrobial drug residues in human plasma and urine. *Journal of Chromatography B* **2017**, *1040*, 192-198.
39. M. Roldan-Pijuan, R. L., S. Cardenas, M. Valcarcel, Abuzar Kabir, Kenneth G. Furton Stir fabric phase sorptive extraction for the determination of triazine herbicides in environmental water by using ultra-high performance liquid chromatography-UV detection. *Journal of Chromatography A* **2014**, (under review).
40. Montesdeoca-Esponda, S.; Sosa-Ferrera, Z.; Kabir, A.; Furton, K. G.; Santana-Rodriguez, J. J., Fabric phase sorptive extraction followed by UHPLC-MS/MS for the analysis of benzotriazole UV stabilizers in sewage samples. *Analytical and Bioanalytical Chemistry* **2015**, *407* (26), 8137-8150.
41. Racamonde, I.; Rodil, R.; Quintana, J. B.; Sieira, B. J.; Kabir, A.; Furton, K. G.; Cela, R., Fabric phase sorptive extraction: a new sorptive microextraction technique for the determination of non-steroidal anti-inflammatory drugs from environmental water samples. *Anal Chim Acta* **2015**, *865* (0), 22-30.
42. Samanidou, V.; Galanopoulos, L.-D.; Kabir, A.; Furton, K. G., Fast extraction of amphenicols residues from raw milk using novel fabric phase sorptive extraction followed by high-performance liquid chromatography-diode array detection. *Analytica Chimica Acta* **2015**, *855* (0), 41-50.
43. Samanidou, V.; Kaltzi, I.; Kabir, A.; Furton, K. G., Simplifying sample preparation using fabric phase sorptive extraction technique for the determination of benzodiazepines in blood serum by high-performance liquid chromatography. *Biomedical Chromatography* **2016**, *30* (6), 829-836.
44. Samanidou, V.; Kehagia, M.; Kabir, A.; Furton, K. G., Matrix molecularly imprinted mesoporous sol-gel sorbent for efficient solid-phase extraction of chloramphenicol from milk. *Analytica Chimica Acta* **2016**, *914*, 62-74.
45. Samanidou, V.; Michaelidou, K.; Kabir, A.; Furton, K. G., Fabric phase sorptive extraction of selected penicillin antibiotic residues from intact milk followed by high performance liquid chromatography with diode array detection. *Food Chemistry* **2017**, *224*, 131-138.
46. Gruzdev, I. V.; Kuzivanov, I. M.; Zenkevich, I. G.; Kondratenok, B. M., Determination of methyl-substituted phenols in water by gas chromatography with preliminary iodination. *Journal of Analytical Chemistry* **2013**, *68* (2), 161-169.
47. Sarafray-Yazdi, A.; Amiri, A.; Rounaghi, G.; Hosseini, H. E., A novel solid-phase microextraction using coated fiber based sol-gel technique using poly(ethylene glycol) grafted multi-walled carbon nanotubes for determination of benzene, toluene, ethylbenzene and o-xylene in water samples with gas chromatography-flame ionization detector. *Journal of Chromatography A* **2011**, *1218* (34), 5757-5764.
48. Zhang, W.-H.; Zhang, D.; Zhang, R.-J.; Xia, F.; Liu, Y.-F., Flow injection analysis of volatile phenols in environmental water samples using CdTe/ZnSe nanocrystals as a fluorescent probe. *Analytical and Bioanalytical Chemistry* **2012**, *402* (2), 895-901.
49. Kabir, A.; Hamlet, C.; Malik, A., Parts per quadrillion level ultra-trace determination of polar and nonpolar compounds via solvent-free capillary microextraction on surface-bonded sol-gel polytetrahydrofuran coating and gas chromatography-flame ionization detection. *Journal of Chromatography A* **2004**, *1047* (1), 1-13.
50. Jiang, R. F.; Pawliszyn, J., Thin-film microextraction offers another geometry for solid-phase microextraction. *Trac-Trends in Analytical Chemistry* **2012**, *39*, 245-253.
51. Cudjoe, E.; Vuckovic, D.; Hein, D.; Pawliszyn, J., Investigation of the Effect of the Extraction Phase Geometry on the Performance of Automated Solid-Phase Microextraction. *Analytical Chemistry* **2009**, *81* (11), 4226-4232.

52. Alcudia-Leon, M. C.; Lucena, R.; Cardenas, S.; Valcarcel, M., Stir Membrane Extraction: A Useful Approach for Liquid Sample Pretreatment. *Analytical Chemistry* **2009**, *81* (21), 8957-8961.
53. Klemm, D., *Comprehensive Cellulose Chemistry: Fundamentals and analytical methods*. Wiley-VCH: 1998.
54. Wakelyn, P. J.; Bertoniere, N. R.; French, A. D.; Thibodeaux, D. P.; Triplett, B. A.; Rousselle, M. A.; Goynes, W. R.; Edwards, J. V.; Hunter, L.; McAlister, D. D., *Cotton Fiber Chemistry and Technology*. Taylor & Francis: 2010.
55. Aegerter, M. A.; Koebel, M. M.; Leventis, N.; SpringerLink, *Aerogels handbook*. Springer: New York, 2011.
56. Tarbuk, A.; Grancaric, A. M.; Leskovac, M., Novel cotton cellulose by cationisation during the mercerisation process-part 1: chemical and morphological changes. *Cellulose* **2014**, *21* (3), 2167-2179.
57. Kuche Loghmani, S.; Farrokhi-Rad, M.; Shahrabi, T., Effect of polyethylene glycol on the electrophoretic deposition of hydroxyapatite nanoparticles in isopropanol. *Ceramics International* **2013**, *39* (6), 7043-7051.
58. Montarsolo, A.; Periolatto, M.; Zerbola, M.; Mossotti, R.; Ferrero, F., Hydrophobic sol-gel finishing for textiles: Improvement by plasma pre-treatment. *Textile Research Journal* **2013**, *83* (11), 1190-1200.
59. Pedersen-Bjergaard, S.; Rasmussen, K. E.; Grønhaug Halvorsen, T., Liquid-liquid extraction procedures for sample enrichment in capillary zone electrophoresis. *Journal of Chromatography A* **2000**, *902* (1), 91-105.
60. Esrafil, A.; Yamini, Y.; Shariati, S., Hollow fiber-based liquid phase microextraction combined with high-performance liquid chromatography for extraction and determination of some antidepressant drugs in biological fluids. *Analytica Chimica Acta* **2007**, *604* (2), 127-133.
61. Pawliszyn, J.; Lord, H. L., *Handbook of Sample Preparation*. Wiley: 2012.
62. Risticvic, S.; Lord, H.; Gorecki, T.; Arthur, C. L.; Pawliszyn, J., Protocol for solid-phase microextraction method development. *Nature Protocols* **2010**, *5* (1), 122-139.

### Figure Captions:

**Figure 1** Comparison of liquid flow behavior through a permeable and impermeable substrate

**Figure 2.** Chemical structure of cellulose substrate demonstrating available hydroxyl functional groups for anchoring sol-gel inorganic-organic network

**Figure 3.** Chemical reactions involved in the synthesis of surface-bonded sol-gel PEG coatings on fabric substrate.

**Figure 4.** Schematic representation of surface bonded sol-gel PEG coating on cellulose fabric surface.

**Figure 5.** FT-IR spectra of different components in (a) poly(ethylene glycol) polymer; (b) MTMS; (c) uncoated cellulose substrate; (d) sol-gel PEG coated FPSE media.

**Figure 6.** Scanning electron microscopy images of (a) uncoated cellulose fabric surface; (b) conditioned uncoated cellulose surface; (c) sol-gel PEG coated cellulose fabric surface at 500 magnifications.

**Figure 7.** Analyte sorption capacity study for sol-gel PEG coated FPSE device.

**Figure 8.** Extraction profiles of substituted phenols for the sol-gel PEG coated FPSE device.

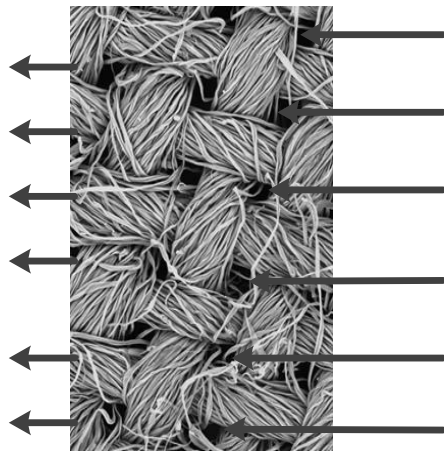
**Figure 9.** Graphs demonstrating the impact of salt addition to the FPSE efficiency for extracting substituted phenols.

**Figure 10.** Graphs showing relationship between absolute percentage recovery and log  $K_{ow}$  for sol-gel PEG coated FPSE media.

**Fig. 11.** Fabric phase sorptive extraction of substituted phenols using a sol-gel PEG coated FPSE media. Extraction conditions: 5 cm<sup>2</sup> FPSE media, sample volume 10 mL, stirring speed 1100 rpm, salt content 15%, extraction time 40 min, desorption time 5 min, and desorption solvent MeOH:ACN (50/50)] followed by : (a) high-performance liquid chromatographic analysis. HPLC conditions: 15 cm x 4.6 mm I.D. Zorbax Extend C18 column, isocratic elution 69/31 H<sub>2</sub>O/CAN, 1 mL/min flow rate, UV detection at 200 nm, ambient temperature. Peaks: (1) 4-chlorophenol, (2) 3,5-dimethyl phenol, (3) 2,6-dichlorophenol, (4) 2,4,6-trichlorophenol, (5) 2,4-diisopropyl phenol; (b) gas chromatography-mass spectrometry (GC-MS) analysis. GC-MS conditions: DB-5MS column, 30m x 0.25 mm, 0.5  $\mu$ m, splitless injection, Injector temperature 280°C, GC oven temperature programmed from 40°C, 1 min, 40-100 °C, @7°C/min, 0 min, 100-250 ° at 25 °C/min, MS ion source temperature 230 °C, MS transfer line temperature 280°C, Injection vol. 1  $\mu$ L. Peaks: (1) 3,5-dimethyl phenol, (2) 4-chlorophenol, (3) 2,6-dichlorophenol, (4) 2,4,6-trichlorophenol, (5) 2,4-diisopropyl phenol.

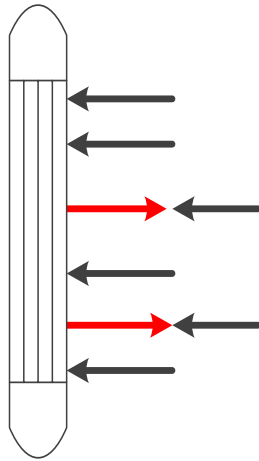
**FIGURE 1**

Permeable microextraction substrate



Due to the easy permeation of the incoming flow through the pores of the extraction surface, no stream bounces back to the reverse direction. Consequently, favors high rate of mass transfer from the sample matrix to the extraction sorbent and results in a very short extraction equilibrium time.

Impermeable microextraction substrate



Only a fraction of incoming flow towards the extraction device successfully reach the extraction surface due to the collision between the incoming and outgoing stream resulting in a failed attempt to reach the surface. As a result, the extraction equilibrium time is significantly high.

FIGURE 2

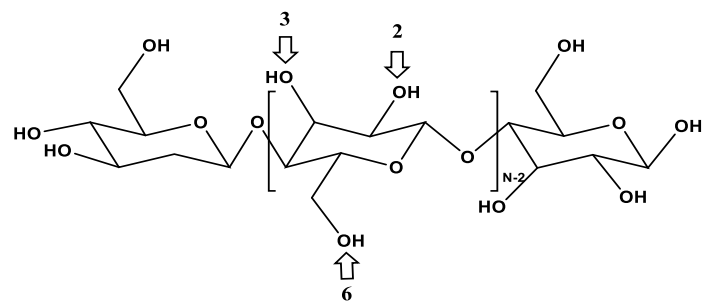


FIGURE 3

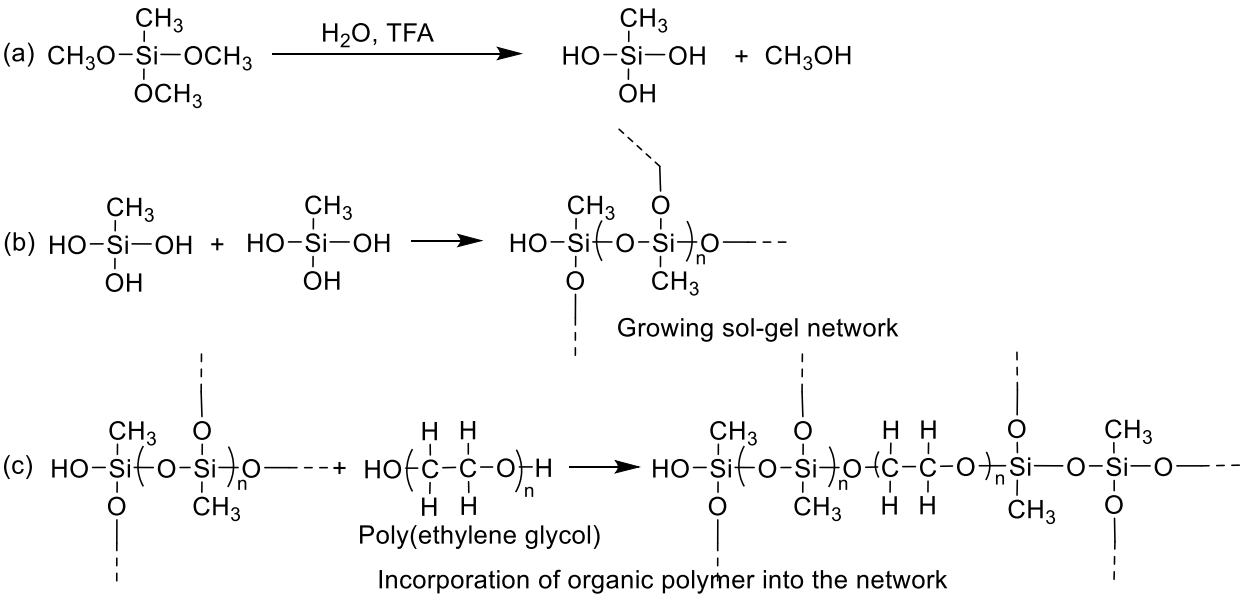
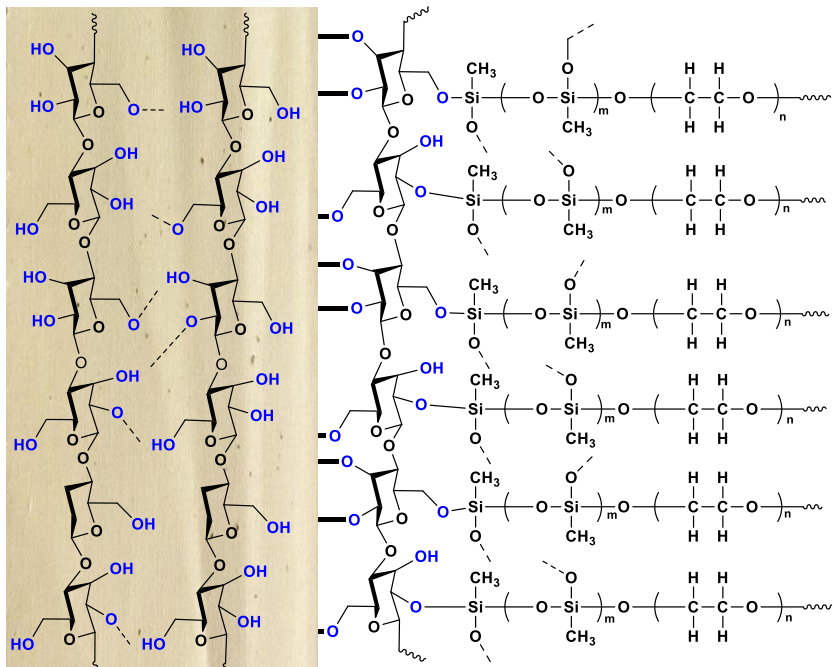




FIGURE 4



Sol-gel PEG coated FPSE media



FIGURE 5

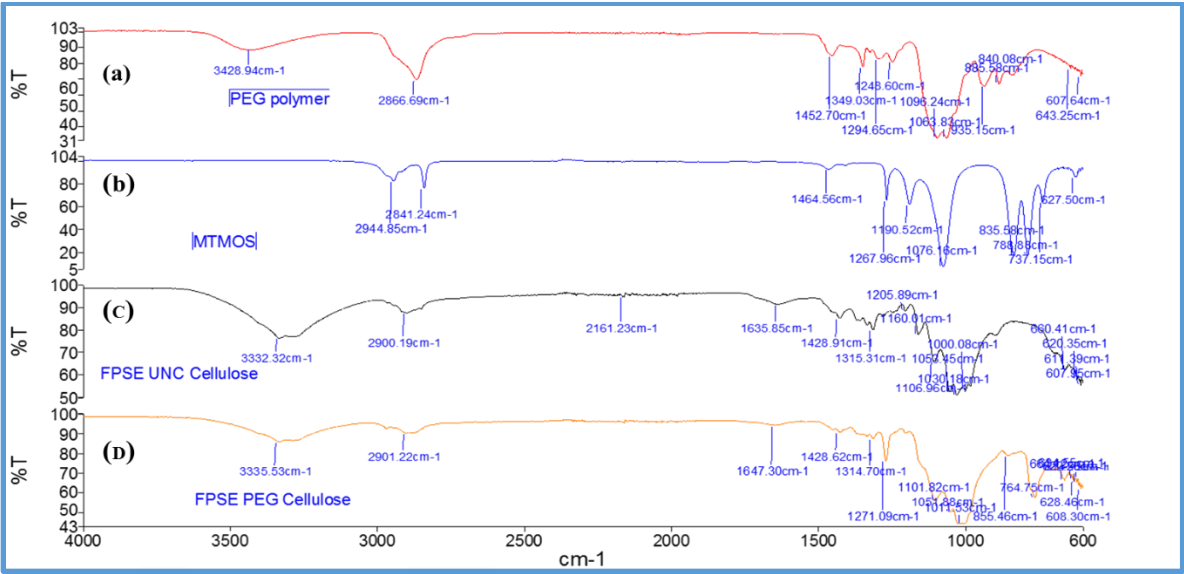


FIGURE 6

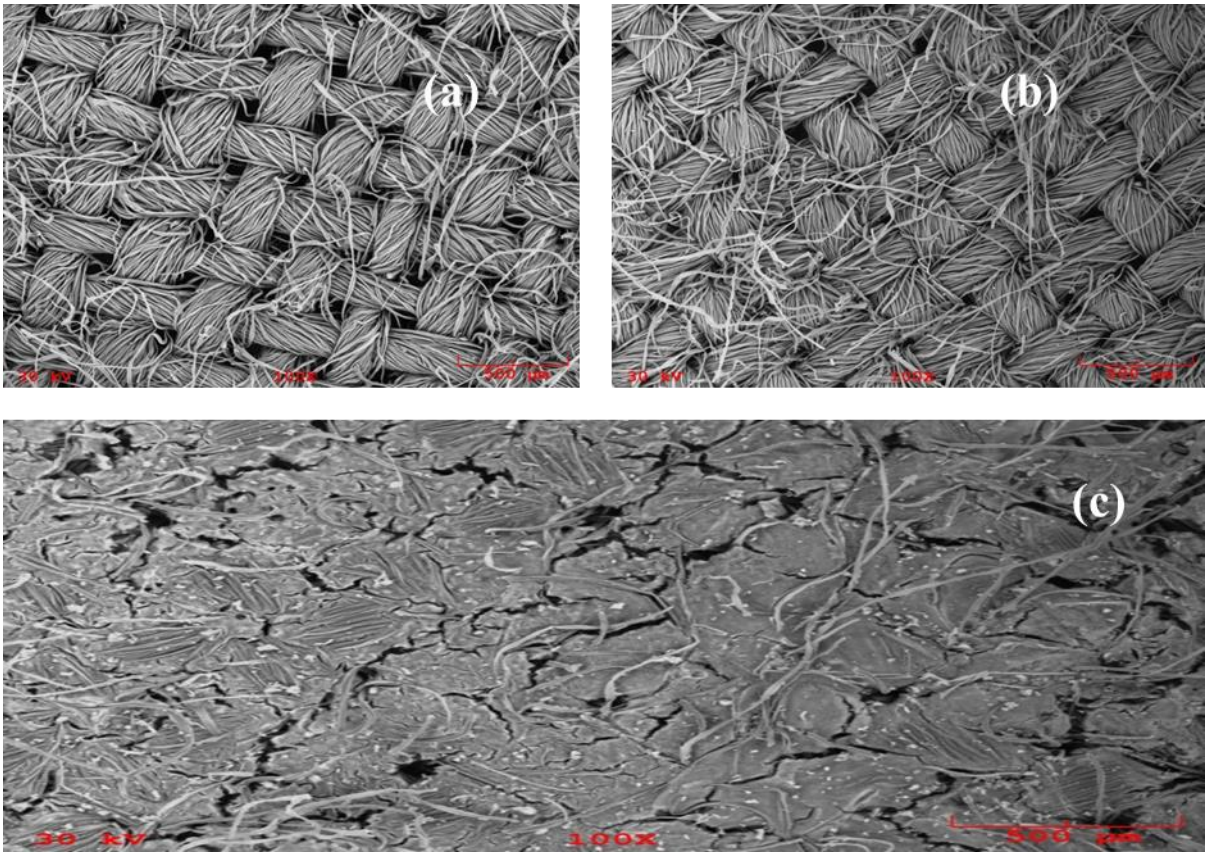


FIGURE 7

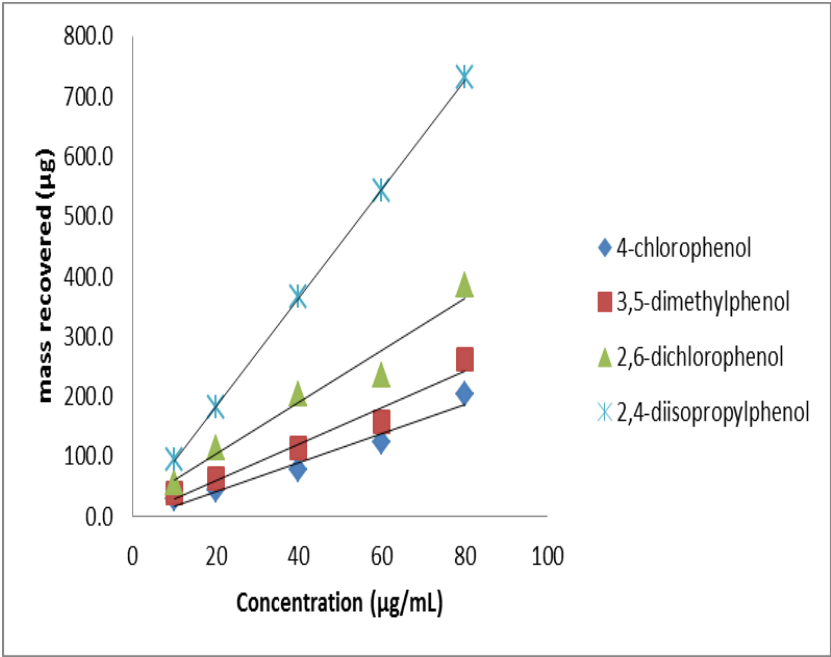


FIGURE 8

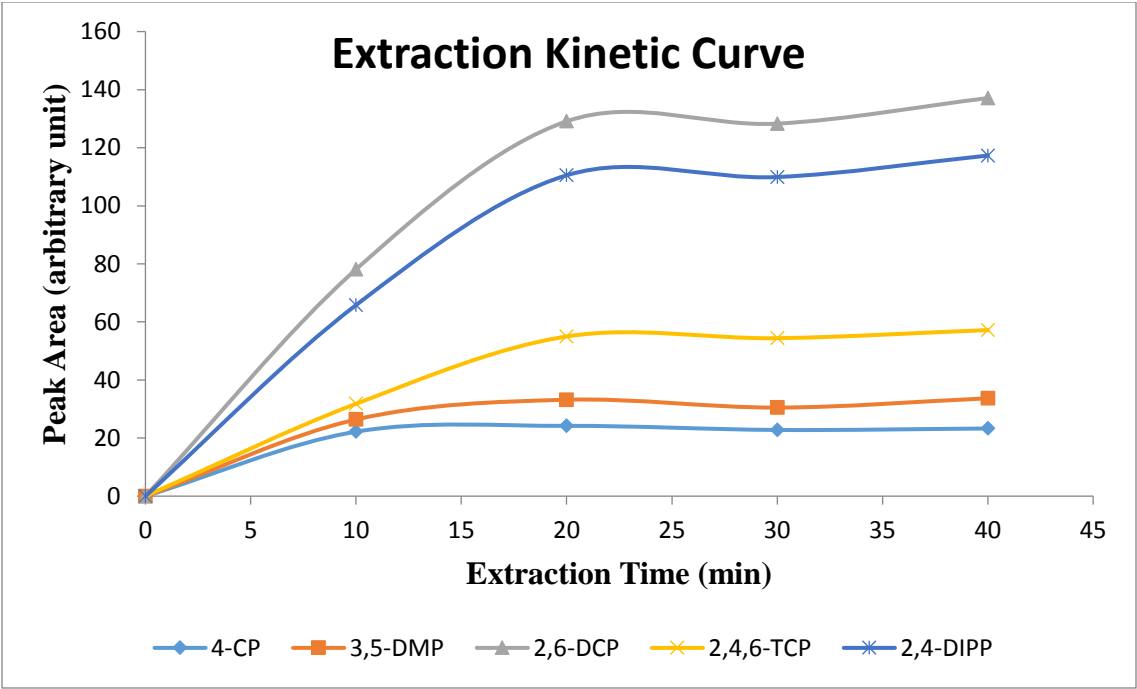


FIGURE 9

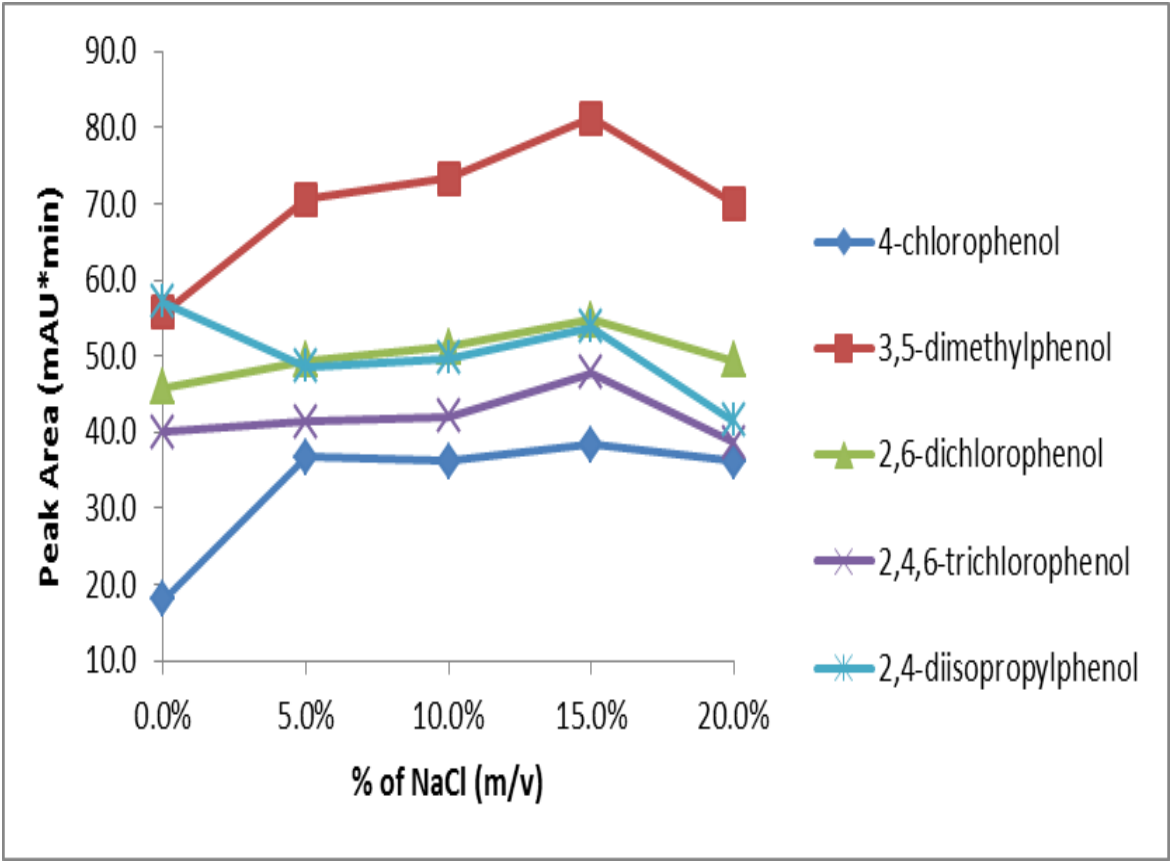


FIGURE 10

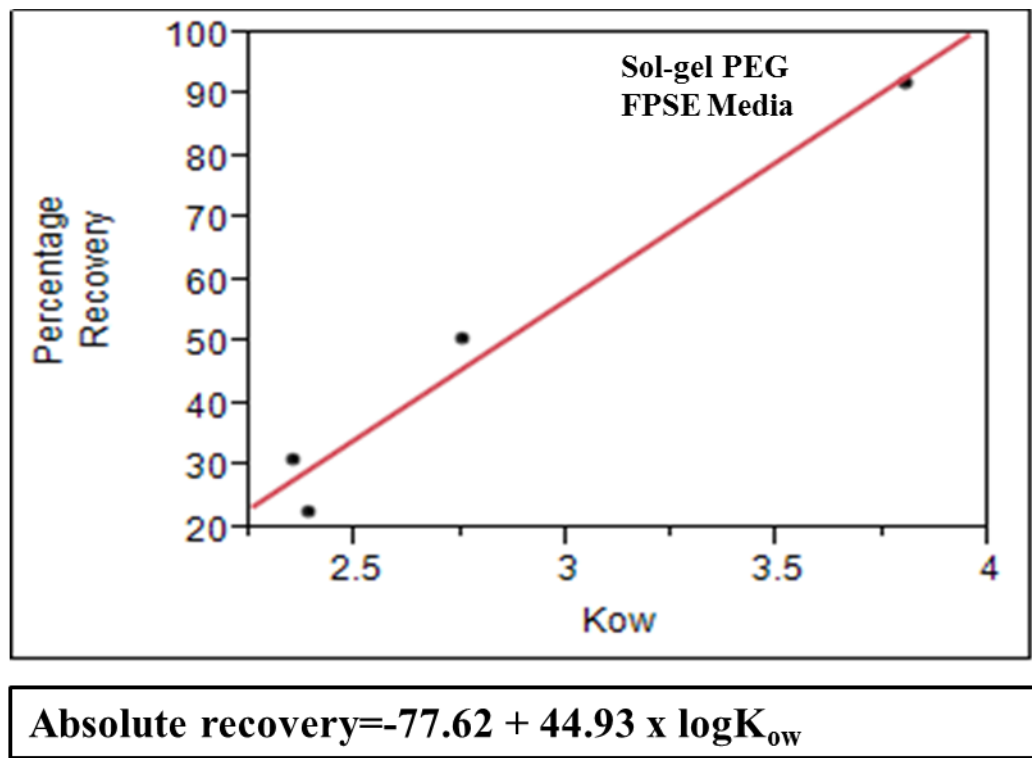
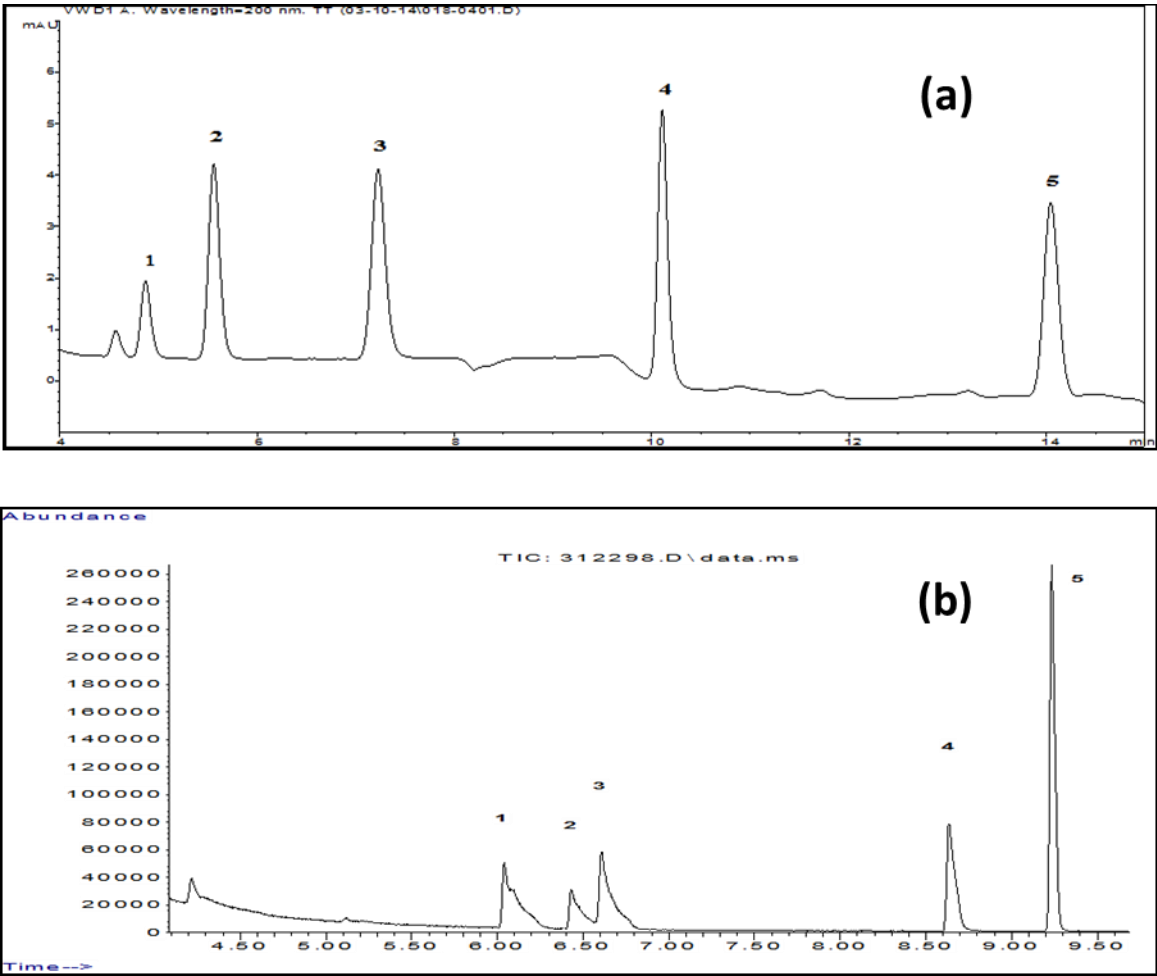


FIGURE 11



**Table 1.** Analytical figures of merit for the proposed FPSE-HPLC-UV method for substituted phenols analysis

Compound class	Analyte	Linear Range (µg L <sup>-1</sup> )	Determination Co-efficient (R <sup>2</sup> )	Repeatability (RSD%) <sup>a</sup>		LOD <sup>c</sup> (µg L <sup>-1</sup> )
				Intra-day <sup>b</sup>	Inter-day <sup>b</sup>	
Substituted Phenols	4-chlorophenol (4-CP)	1-5000	0.9970	1.8	25.5	0.03
	3,5-dimethylphenol (3,5-DMP)	1-5000	0.9997	1.6	9.8	0.01
	2,6-dichlorophenol (2,6-DCP)	1-5000	0.9983	1.3	0.5	0.04
	2,4,6-trichlorophenol (2,4,6-TCP)	1-5000	0.9952	1.6	6.0	0.02
	2,4-diisopropylphenol (2,4-DIPP)	1-5000	0.9981	5.1	4.9	0.02

a Expressed as relative standard deviation

b Intra- and inter-day repeatability was calculated by analyzing water samples spiked with substituted phenols at 50 µg L<sup>-1</sup> within one day (n=5) and over a period of three days (n=3)

c Limit of detection (LOD) calculated as S/N=3



**Table 2.** Comparison of limit of detection of the proposed FPSE-HPLC-UV method with other reported methods for substituted phenols analysis

Analytes <sup>a</sup>	Sample Preparation Method	Sorbent Chemistry	Analytical Instrument	Limit of Detection (µg L <sup>-1</sup> )	Reference
2,4-DCP; 2,4,6-TCP	SPME	Vinyl-SBA-15 mesoporous organosilica	GC-MS	0.002-0.004	[1]
4-CP; 2,6-DCP; 2,4,6-TCP	HS-SPME (after derivatization)	PDMS/DVB	GC-ECD	0.0001-0.122	[2]
4-CP; 2,4,6-TCP	HS-SPME	polyaniline	GC-FID	1.3-58	[3]
2,6-DCP; 2,4,6-TCP	HS-SPME	Polyacrylate	GC-MS	0.0500	[4]
2,4,6-TCP	SPME	Polyacrylate	HPLC-UV; HPLC-ED	2.0 (UV); 0.017 (ED)	[5]
4CP; 3,5DMP; 2,6-DCP; 2,4,6-TCP; 2,4-DIPP	FPSE	sol-gel PEG	HPLC-UV	0.01-0.03	Current study

<sup>a</sup>Abbreviations: 4-Chlorophenol (4-CP); 2,6-Dichlorophenol (2,6-DCP); 2,4,6-Trichlorophenol (2,4,6-TCP); 3,5-Dimethylphenol (3,5-DMP); 2,4-Diisopropylphenol (2,4-DIPP)

[1] F. Zhu et al. J. Chromatogr. A 1247 (2012) 42-48  
[2] P. de Moraes et al. Anal bioanal Chem (2011) 399, 2531-2538  
[3] H. Bagheri et al. Analytica Chimica Acta 532 (2005) 89-95  
[4] A. Ribeiro et al. J. Chromatogr. A 975 (2002) 267-274  
[5] A. Penalver et al. J. Chromatogr. A 953 (2002) 79-87

**Table 3.** Analytical results of substituted phenols in real samples for FPSE-HPLC-UV

Analyte	Sample Matrix	Amount Added, ng	Amount Recovered, ng	Relative Recovery(%)	%RSD (n=3)
4-chlorophenol	Tap water	100	91.0	91.0	3.6
3,5-dimethylphenol			73.2	73.2	1.3
2,6-dichlorophenol			19.7	19.7	11.4
2,4,6-trichlorophenol			26.9	26.9	2.0
2,4-diisopropylphenol			35.8	35.8	15.9
4-chlorophenol	Pond water	100	109.5	109.5	0.9
3,5-dimethylphenol			88.0	88.0	3.3
2,6-dichlorophenol			21.9	21.9	7.8
2,4,6-trichlorophenol			34.5	34.5	5.7
2,4-diisopropylphenol			77.2	77.2	6.3
4-chlorophenol	Reclaimed water	100	106.8	106.8	4.4
3,5-dimethylphenol			90.7	90.7	1.2
2,6-dichlorophenol			40.7	40.7	7.2
2,4,6-trichlorophenol			57.0	57.0	7.3
2,4-diisopropylphenol			90.8	90.8	9.9



© 2017 by the authors; licensee *Preprints*, Basel, Switzerland. This article is an open access article distributed under the terms and conditions of the Creative Commons by Attribution (CC-BY) license (<http://creativecommons.org/licenses/by/4.0/>).